

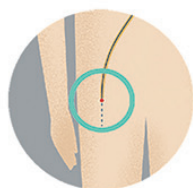
AFIB CARE TRANSFORMED

West Virginia's **FIRST AND ONLY** AFib-accredited hospital is now the first in the state chosen for a NEW AFib Clinical Trial

WHAT IS CHAMPION-AF?

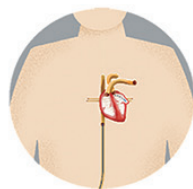
A clinical trial aiming to make FDA-approved **WATCHMAN FLX™** a first-choice option versus blood thinners for stroke risk reduction in patients with Atrial Fibrillation (AFib).

HOW DOES WATCHMAN FLX™ WORK?



Step 1

Your doctor inserts a narrow tube into a vein in your upper leg.



Step 2

Device is guided through the tube, into your left atrial appendage.



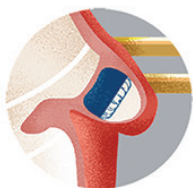
Step 3

Procedure is typically done under anesthesia and takes under an hour.



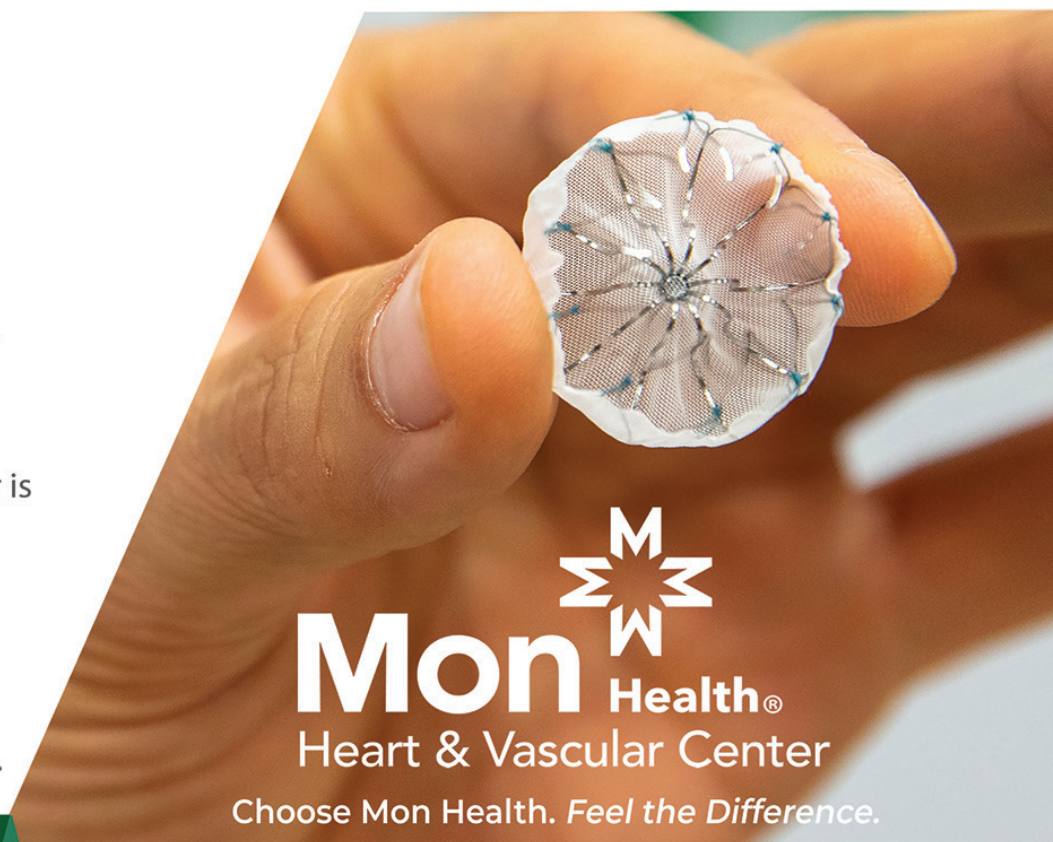
Step 4

After the procedure, a blood thinner is prescribed for 3 months until the appendage is closed.



Step 5

Heart tissue grows over the implant to form a barrier against blood clots.



Mon  **Health®**
Heart & Vascular Center

Choose Mon Health. *Feel the Difference.*

Contact us for more information, or to find out if you're an appropriate candidate for the **CHAMPION-AF** clinical trial.



(304) 599-8802

[MONHEALTH.COM/HEART](https://monhealth.com/heart)