

BEFORE THE OIL AND GAS CONSERVATION COMMISSION OF THE STATE OF WEST VIRGINIA

DOCKET NO. 431 CAUSE NOS. 549-550

IN THE MATTER OF THE REQUEST BY ARSENAL RESOURCES, LLC FOR AN ORDER FROM THE COMMISSION ESTABLISHING DRILLING UNITS AND POOLING OF UNLEASED TRACTS AND INTERESTS OF OIL AND GAS OWNERS AND OPERATORS WHO HAVE NOT ENTERED INTO VOLUNTARY AGREEMENTS ALLOWING FOR THE DEVELOPMENT AND OPERATION OF THE GAMELLI 213 UNIT CONSISTING OF 514.83 ACRES AND GAMELLI 214 UNIT CONSISTING OF 540.51 ACRES TO BE LOCATED IN SIMPSON DISTRICT, HARRISON COUNTY, WEST VIRGINIA

NOTICE OF HEARING

ARSENAL RESOURCES, LLC ("ARSENAL") has requested the WV Oil and Gas Conservation Commission (OGCC) review and establish drilling units for the GAMELLI 213 UNIT 514.83 acres and GAMELLI 214 UNIT 540.51 acres and pooling of unleased tracts and interests of oil and gas owners and operators for the development and operation of the units in Harrison County, West Virginia, pursuant to Chapter 22C-9-7a. Evidence and testimony will be presented at the hearing scheduled for:

DATE: December 2, 2025

TIME: 12:00 p.m.

PLACE: WV Department of Environmental Protection Oil and Gas Conservation Commission 601 57th Street, SE Charleston, WV 25304

OIL AND GAS CONSERVATION COMMISSION OF THE STATE OF WEST VIRGINIA

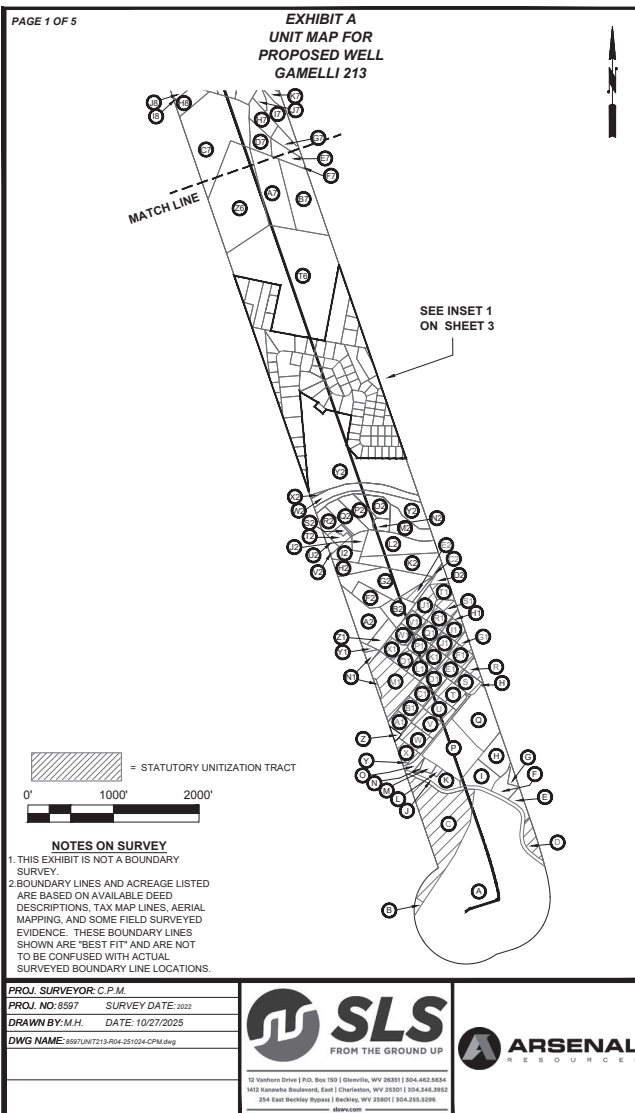


Table with 3 columns: Tract, Dist-TM-PAR, and Approx. Acreage within Unit. Lists tracts A through Z2 with their corresponding acreages.

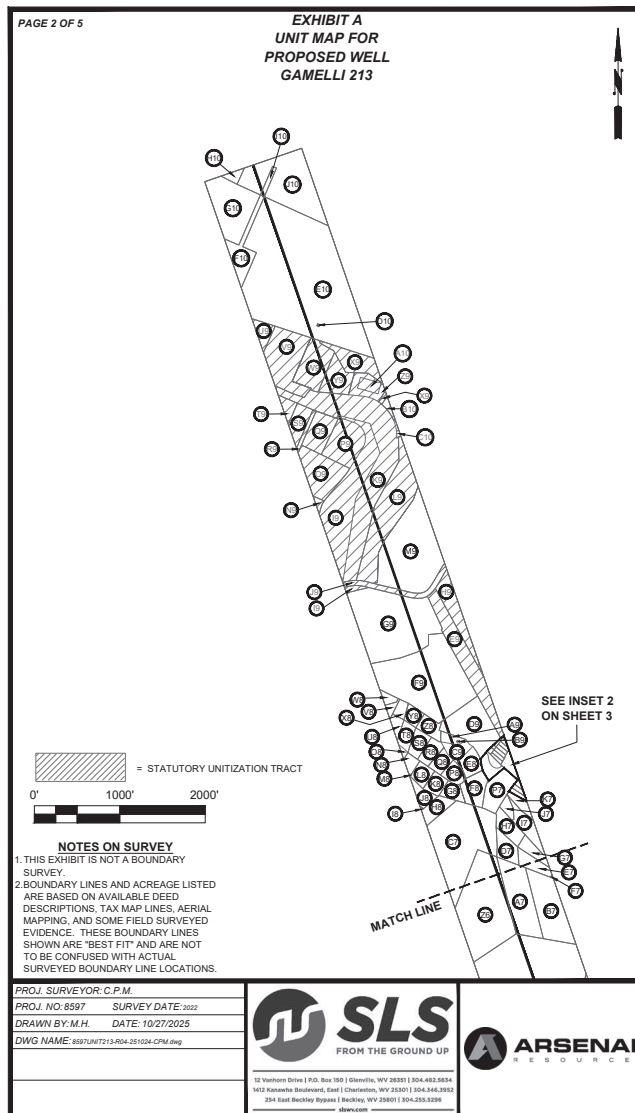


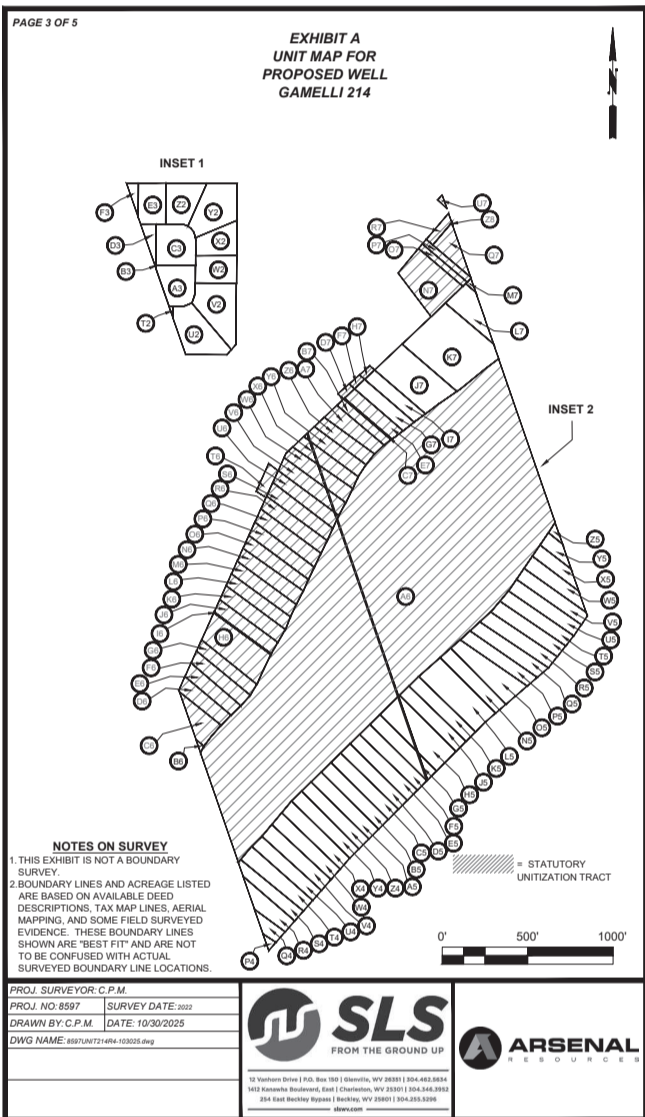
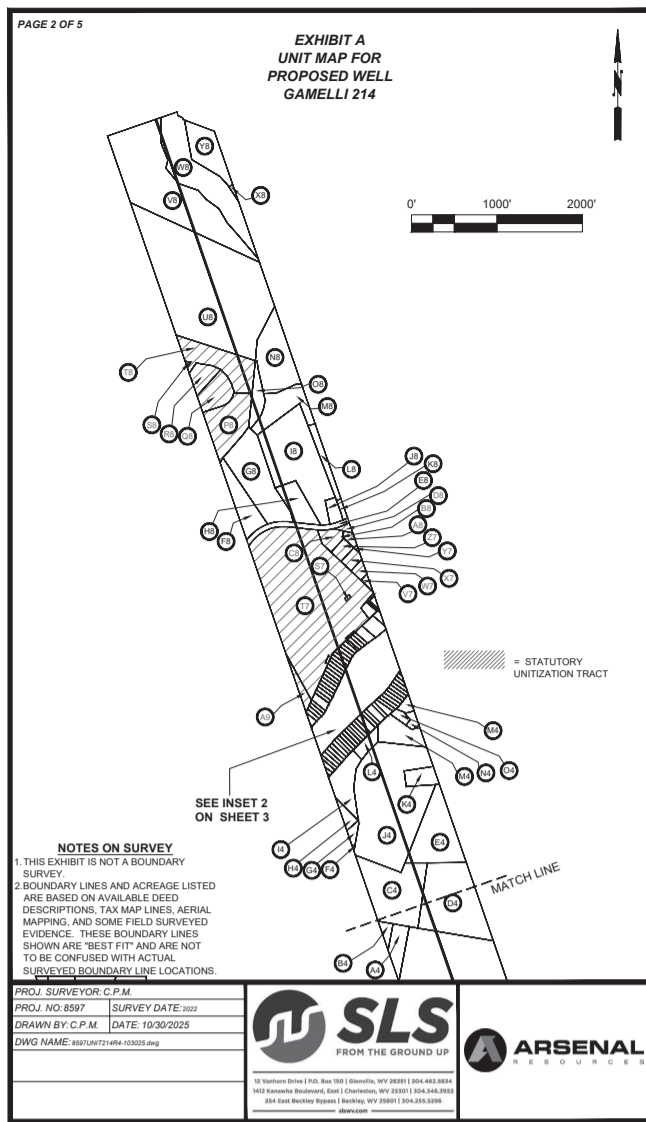
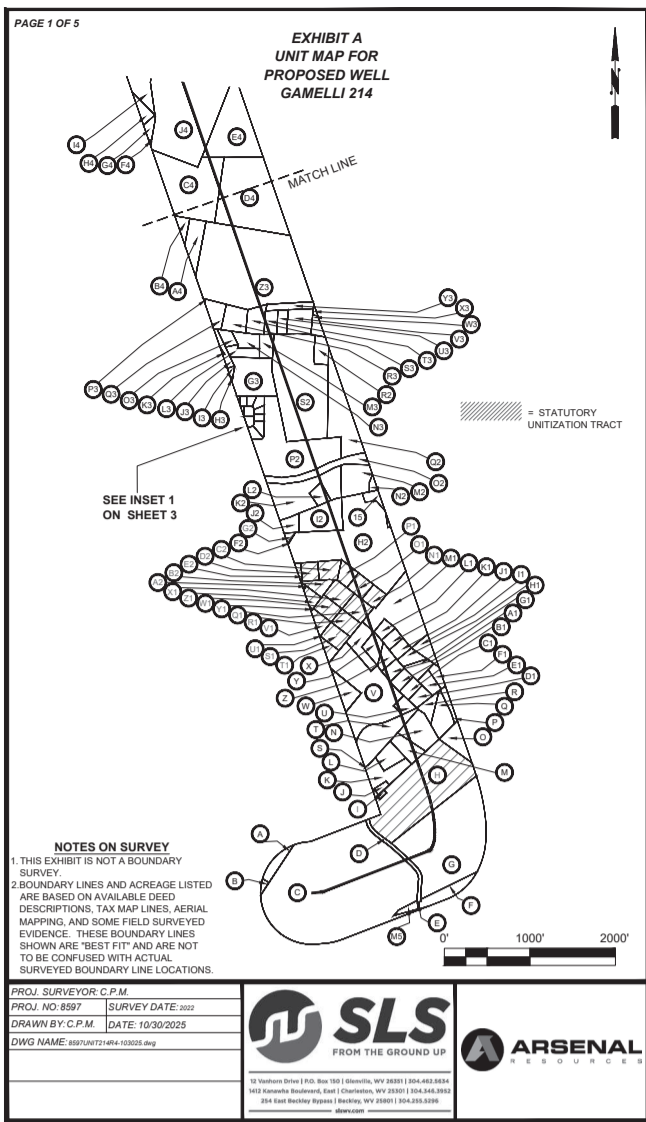
Table with 3 columns: Tract, Dist-TM-PAR, and Approx. Acreage within Unit. Lists tracts A through Z2 with their corresponding acreages.



Table with 3 columns: Tract #, TMP #, and Owner/Operator Name. Lists tracts D, C2; E2, X2, Z6, J9, and various tracts in the 47-033-16-290-21.17 area.

Table with 3 columns: Tract #, TMP #, and Owner/Operator Name. Lists tracts D, C2; E2, X2, Z6, J9, and various tracts in the 47-033-16-290-21.17 area.

Table with 3 columns: Tract #, TMP #, and Owner/Operator Name. Lists tracts D, C2; E2, X2, Z6, J9, and various tracts in the 47-033-16-290-21.17 area.



PAGE 4 OF 5

TRACT	DIST-TM-Plat	ACRES
A	15-330-8.5	1.06
B	15-330-8.30	0.20
C	15-330-29	41.32
D	Co. R. 17	1.13
E	15-331-18.3	0.01
F	15-331-13	1.84
G	15-331-7	19.87
H	15-330-15	16.11
I	15-330-14	0.12
J	15-330-13.2	0.27
K	15-330-15	2.32
L	15-330-13.3	1.44
M	15-330-13.4	1.53
N	15-330-13.1	2.81
O	15-331-2	1.64
P	15-330-23	0.19
Q	15-330-22	1.84
R	15-230-13	0.88
S	15-230-18	0.0004
T	15-230-20	4.05
U	15-230-21	0.79
V	15-330-32.1	10.05
W	15-330-31.1	1.50
X	15-230-26	1.92
Y	15-230-1	1.17
Z	15-230-3	0.83
AA	15-230-5	0.80
AB	15-230-7	0.80
AC	15-230-9	0.78
AD	15-230-11	0.83
AE	15-230-12	0.91
AF	15-230-14	0.81
AG	15-230-10	1.03
AH	15-230-8	0.86
AI	15-331-1.2	1.08
AJ	15-230-6	0.74
AK	15-230-4	0.72
AL	15-230-2	0.69
AM	15-330-32	6.85
AN	15-230-17	0.96
AO	15-230-16	1.12
AP	15-230-15	0.99
AQ	15-230-20	1.48
AR	15-230-21	1.29
AS	15-230-28	1.53
AT	15-230-29	0.62
AU	15-230-30	0.001
AV	15-230-27	0.78
AW	15-230-22	1.24
AX	15-230-19	1.46
AY	15-230-28	0.00
AZ	15-230-23	0.64
BA	15-230-25.1	0.05
BB	15-230-18	0.95
BC	15-230-14	1.26
BD	15-230-13	0.98
BE	15-230-12	0.22
BF	15-330-15	0.02
BG	15-330-13	0.19
BH	15-310-89	17.95
BI	15-310-93	3.59
BJ	15-310-66.2	0.85
BK	15-310-26	6.01
BL	15-310-69	9.80
BM	15-310-67.1	0.83
BN	15-310-69.2	2.77
BO	15-310-69.1	0.37
BP	15-310-69.1	0.37
BQ	15-310-66	10.79
BR	15-310-66	9.80
BS	15-310-67.1	1.20
BT	15-310-67	16.61
BU	15-230-24	0.00
BV	15-230-16	0.39
BW	15-230-17	0.22
BX	15-230-18	0.22
BY	15-230-19	0.36
BZ	15-230-20	0.26

PAGE 5 OF 5

TRACT	ACRES	TOTAL
AA	15-2303-50	13.68
BB	15-2301-5	0.01
CC	15-2301-6	0.17
DD	15-2301-8	0.17
EE	15-2301-9	0.17
FF	15-2301-10	0.18
GG	15-2301-11	0.17
HH	15-2301-13	0.42
II	15-2301-13	0.01
JJ	15-2301-14	0.18
KK	15-2301-15	0.21
LL	15-2301-16	0.18
MM	15-2301-17	0.19
NN	15-2301-18	0.21
OO	15-2301-19	0.19
PP	15-2301-20	0.20
QQ	15-2301-21	0.22
RR	15-2301-22	0.20
SS	15-2301-23	0.21
TT	15-2302-1	0.07
UU	15-2301-24	0.20
VV	15-2301-25	0.21
WW	15-2301-26	0.22
XX	15-2301-27	0.19
YY	15-2301-28	0.18
ZZ	15-2301-29	0.17
AAA	15-2301-30	0.18
BBB	15-2302-2	0.11
CCC	15-2301-31	0.01
DDD	15-2303-4	0.02
EEE	15-2301-32	0.17
FFF	15-2302-5	0.02
GGG	15-2301-33	0.02
HHH	15-2302-6	0.02
III	15-2301-34	0.18
JJJ	15-2301-35	0.51
KKK	15-2301-36	0.87
LLL	15-2301-40	0.21
MMM	15-2301-41	0.01
NNN	15-2302-8	0.42
OOO	15-2302-9	0.07
PPP	15-2303-3	0.07
QQQ	15-2303-7	0.14
RRR	15-2303-34	0.05
SSS	15-2303-54	0.06
TTT	15-2302-2	36.08
UUU	15-2303-133	0.01
VVV	15-2303-130.4	0.23
WWW	15-2303-130.2	0.53
XXX	15-2303-130.3	0.78
YYY	15-2303-130.2	0.05
ZZZ	15-2303-130.3	0.81
AAA	15-2303-130	0.41
BBB	15-2303-130.3	0.01
CCC	15-2303-130.1	1.20
DDD	15-2303-130.6	0.27
EEE	15-2303-130.1	1.72
FFF	15-2300-4.3	3.76
GGG	15-2300-49	8.02
HHH	15-2300-51	2.98
III	15-2300-52	13.88
JJJ	15-2300-52	0.04
KKK	15-2303-51	0.31
LLL	15-2303-54	1.32
MMM	15-2301-11.4	4.37
NNN	15-2301-11.2	7.23
OOO	15-2301-9	1.81
PPP	15-2301-4	5.92
QQQ	15-2301-22	2.91
RRR	15-2301-21	1.72
SSS	15-2301-15	0.05
TTT	15-2301-129	6.14
UUU	15-2300-10	37.18
VVV	15-2300-4.3	21.21
WWW	15-2300-4.6	11.52
XXX	15-2300-4.6	0.12
YYY	15-2300-4.2	4.51
ZZZ	15-2303-30	0.0004

GAMELLI 214 UNIT

Tract #	TMP #	Owner Name
H	47-033-15-330-15	Kanina Michele Drummond
H	47-033-15-330-15	Black Gold Group, LTD
I	47-033-15-330-14	Kanina Michele Drummond
I	47-033-15-330-14	Black Gold Group, LTD
I	47-033-15-330-14	Union Misssion Church
G2	47-033-15-330-8.15	Deborah Ann Sandy
A6; C6 ; D6 thru S6; U6 thru M7	47-033-15-2301-51 (Maple Lake); 47-033-015-2301-6; 47-033-015-2301-8 to 41	John K Perry
A6; C6 ; D6 thru S6; U6 thru M7	47-033-15-2301-51 (Maple Lake); 47-033-015-2301-6; 47-033-015-2301-8 to 41	Jana Bellamy
A6; C6 ; D6 thru S6; U6 thru M7	47-033-15-2301-51 (Maple Lake); 47-033-015-2301-6; 47-033-015-2301-8 to 41	Jon Perry
A6; C6 ; D6 thru S6; U6 thru M7	47-033-15-2301-51 (Maple Lake); 47-033-015-2301-6; 47-033-015-2301-8 to 41	Bruce Perry
A6; C6 ; D6 thru S6; U6 thru M7	47-033-15-2301-51 (Maple Lake); 47-033-015-2301-6; 47-033-015-2301-8 to 41	Debra Stacco
A6; C6 ; D6 thru S6; U6 thru M7	47-033-15-2301-51 (Maple Lake); 47-033-015-2301-6; 47-033-015-2301-8 to 41	Lynn D Perry
A6; C6 ; D6 thru S6; U6 thru M7	47-033-15-2301-51 (Maple Lake); 47-033-015-2301-6; 47-033-015-2301-8 to 41	James D Bartlett
A6; C6 ; D6 thru S6; U6 thru M7	47-033-15-2301-51 (Maple Lake); 47-033-015-2301-6; 47-033-015-2301-8 to 41	Charles W Bartlett
A6; C6 ; D6 thru S6; U6 thru M7	47-033-15-2301-51 (Maple Lake); 47-033-015-2301-6; 47-033-015-2301-8 to 41	Robert K Bartlett
A6; C6 ; D6 thru S6; U6 thru M7	47-033-15-2301-51 (Maple Lake); 47-033-015-2301-6; 47-033-015-2301-8 to 41	Kathryn Broughton
A6; C6 ; D6 thru S6; U6 thru M7	47-033-15-2301-51 (Maple Lake); 47-033-015-2301-6; 47-033-015-2301-8 to 41	Sarah Jacobs
A6; C6 ; D6 thru S6; U6 thru M7	47-033-15-2301-51 (Maple Lake); 47-033-015-2301-6; 47-033-015-2301-8 to 41	Marvin Spence
A6; C6 ; D6 thru S6; U6 thru M7	47-033-15-2301-51 (Maple Lake); 47-033-015-2301-6; 47-033-015-2301-8 to 41	Bruce Hannel
A6; C6 ; D6 thru S6; U6 thru M7	47-033-15-2301-51 (Maple Lake); 47-033-015-2301-6; 47-033-015-2301-8 to 41	Shyrl L Combs
A6; C6 ; D6 thru S6; U6 thru M7	47-033-15-2301-51 (Maple Lake); 47-033-015-2301-6; 47-033-015-2301-8 to 41	David E Perry
A6; C6 ; D6 thru S6; U6 thru M7	47-033-15-2301-51 (Maple Lake); 47-033-015-2301-6; 47-033-015-2301-8 to 41	Irmgard Stiller
A6; C6 ; D6 thru S6; U6 thru M7	47-033-15-2301-51 (Maple Lake); 47-033-015-2301-6; 47-033-015-2301-8 to 41	Donna Jean Caro
A6; C6 ; D6 thru S6; U6 thru C7; E7; G7; I7 thru M7	47-033-15-2301-51 (Maple Lake); 47-033-015-2301-6; 47-033-015-2301-8 to 41	Lloyd Perry
F7	47-033-15-2302-2.5	Karen S Currey
H7	47-033-15-2302-2.6	Ronald J Duvall
N7	47-033-15-2302-52	Joanne P Anderson
S7	47-033-15-2302-54	Sharon Marie Zinn
U7 thru D8; K8 & L8	47-033-15-2303-130 to 130.6; 47-033-15-2303-130.12 & 130.13; 47-033-15-2303-133; 47-033-15-2303-51; 47-033-15-2303-54.19	John W. Kerns Trust; % United Bank TTE
E8	US ROUTE 50	WV Department of Transportation DOH
P8; Q8; R8; S8; T8	47-033-16-290-21.21 to 21.23; 47-033-16-290-21.10; 47-033-16-290-21.4	Betty G. Schmidt Revocable Trust
P8; Q8; R8; S8; T8	47-033-16-290-21.21 to 21.23; 47-033-16-290-21.10; 47-033-16-290-21.4	Mitchell Sutton Garrett
P8; Q8; R8; S8; T8	47-033-16-290-21.21 to 21.23; 47-033-16-290-21.10; 47-033-16-290-21.4	Susan M Schwartz
P8; Q8; R8; S8; T8	47-033-16-290-21.21 to 21.23; 47-033-16-290-21.10; 47-033-16-290-21.4	Michael W Hull
P8; Q8; R8; S8; T8	47-033-16-290-21.21 to 21.23; 47-033-16-290-21.10; 47-033-16-290-21.4	Amy S Hull
P8; Q8; R8; S8; T8	47-033-16-290-21.21 to 21.23; 47-033-16-290-21.10; 47-033-16-290-21.4	Catherine L Morgan
N1-E2		Greylock Production, LLC
R2, S2, P3-Z5		EQT Production Company