



NOTICE OF MEETING

The Mineral Wells City Council will hold a regular meeting at 6:00 PM on Tuesday, November 19, 2019 in the City Council Chambers at the City Hall Annex, 115 S.W. 1st Street, Mineral Wells, Texas. to consider the following agenda:

Call to Order

Invocation: Pastor Margie Holmes of Central United Methodist Church of Mineral Wells

Pledges of Allegiance to U.S. and Texas Flags

PRESENTATION

- (4) 1. Receive a Presentation from the University of Texas at Arlington Master of Public Administration Graduate Students regarding the results of the recent Community Survey.
- (5) 2. Presentation of the Public Protection Classification (PPC) 3/3Y as recommended by the Insurance Service Office (ISO). This new rating will be sent to the Texas Department of Insurance and the State Fire Marshal's Office to be used in determining insurance rates.

PUBLIC COMMENT

This is an opportunity for the public to address the governing body on any matter, except public hearings that are included on the agenda. Comments related to public hearings will be heard when the specific hearing begins. Public comments are limited to three (3) minutes per speaker, unless the speaker requires the assistance of a translator, in which case the speaker is limited to six (6) minutes, in accordance with applicable law. To address the governing body, each speaker must complete a Speaker Form and provide it to the City Clerk prior to the start of the meeting. Each speaker shall approach the podium and state his/her name and address before speaking. Speakers shall address the governing body with civility that is conducive to appropriate public discussion. Speakers can address only the governing body and not individual city officials or employees. The public cannot speak from the gallery but only from the podium. Per the Texas Open Meetings Act, the governing body is not permitted to take action on or discuss any item not listed on the agenda. The Council may: (1) make a statement of fact regarding the item; (2) make a recitation of existing policy regarding the item; or (3) propose the item be placed on a future agenda, in accordance with Council procedures.

CONSENT AGENDA

- (38) 3. Consider and take appropriate action on minutes of meeting held November 5, 2019.
- (44) 4. Consider and take appropriate action on budgeted expenditures over \$500.
- (46) 5. Consider and take appropriate action on Pay Application No. 3 to Peachtree Construction, Inc. in the amount of \$110,080.71 for the Holiday East Paving Project.
- (49) 6. Consider and take appropriate action on Pay Application No. 4 to Peachtree Construction, Inc. in the amount of \$115,730.10 for the Paving Improvements Project for Travis Dr. and SE 12th Street.
- (53) 7. Consider and take appropriate action authorizing a Request for Proposals solicitation for a Master Lease Purchase Funding Agreement.

ITEMS FOR INDIVIDUAL CONSIDERATION

- (66) 8. Conduct a Public Hearing, and consider and take appropriate action on an Ordinance for the closure of a portion of NW 1st Avenue between NW 3rd Street and NW 4th Street.
- (74) 9. Consider and take appropriate action on a resolution casting votes for the Parker County Appraisal District Board of Directors for 2020-2021.
- (79) 10. Consider and take appropriate action on a resolution casting votes for the Palo Pinto County Appraisal District Board of Directors for 2020-2021.
- (83) 11. Consider and take appropriate action on requests to purchase lots owned by the City of Mineral Wells in the Springhill Addition.
- 12. Future Agenda Items/Requests by Councilmembers to be on the next agenda.
- 13. **EXECUTIVE SESSION:** In accordance with Texas Government Code, Section 551.001, et seq., the City Council will recess into Executive Session (closed meeting) to discuss the following:
 - a. §551.071(1): Consultation with Attorney regarding pending litigation – Cause No. CV19-1776 – Christopher Michael Perricone vs. The City of Mineral Wells, Texas.

14. **RECONVENE INTO OPEN SESSION:** In accordance with Texas Government Code, Chapter 551, the City Council will reconvene into Regular Session to consider action, if any, on matters discussed in Executive Session.

15. Adjourn

Notes: Disabled persons requiring special assistance are requested to notify the City of Mineral Wells 24 hours in advance of the meeting by calling the City Clerk's office at 940.328.7702.

The City Council reserves the right to meet in Executive Session closed to the public at any time in the course of this meeting to discuss matters listed on the agenda, as authorized by the Texas Open Meetings Act, Texas Government Code Chapter 551, including §551.071, (private consultation with the attorney for the City); §551.072 (purchase, exchange, lease or value of real property); §551.074 (personnel or to hear complaints against personnel); §551.076 (deployment, or specific occasions for implementation of security personnel or devices); and §551.087 (economic development negotiations). Any decision held on such matters will be taken or conducted in Open Session following the conclusion of the Executive Session.

State of Texas §
City of Mineral Wells §

I hereby certify that notice of this meeting of the Mineral Wells City Council was posted by 6:00 o'clock pm on the 15th day of November, 2019.

GIVEN UNDER MY HAND AND SEAL OF OFFICE this 15th day of November, 2019.

(SEAL)

Peggy Clifton, City Clerk

AGENDA ITEM COMMENTARY

ITEM TITLE

Receive a Presentation from the University of Texas at Arlington Master of Public Administration Graduate Students regarding the results of the recent Community Survey.

INITIATOR/STAFF INFORMATION SOURCE

John Moran, Finance Director

BACKGROUND

The University of Texas at Arlington (UTA) Master of Public Administration Program requires Graduate Students to complete a “real world” project prior to graduation. In any event, as staff undertook a previous community survey in the latter part of 2018 and early 2019, we determined that a repeat survey with different methodologies and better focused questions would achieve improved results.

The UTA team has thoroughly vetted the current survey and produced what we feel are very well thought out methodologies which produced results that reflect the citizens’ concerns and perspectives, and should offer both the City Council and Staff insights into citizens’ thoughts for the future direction of the City.

This survey should also be repeated again in several years to gauge our overall direction, where further challenges might exist, and to determine where citizens feel that their tax dollars are best spent.

EXHIBITS

COUNCIL ACTION/RECOMMENDATION

No action

ITEM NUMBER 1.
MEETING DATE 11/19/2019

AGENDA ITEM COMMENTARY

ITEM TITLE

Presentation of the Public Protection Classification (PPC) 3/3Y as recommended by the Insurance Service Office (ISO). This new rating will be sent to the Texas Department of Insurance and the State Fire Marshal's Office to be used in determining insurance rates.

INITIATOR/STAFF INFORMATION SOURCE

Mike Pool, Fire Chief

BACKGROUND

The City of Mineral Wells' Public Protection Classification (PPC) rating is now a 3/3Y, an improvement from the previous rating of 5/5Y. PPC's are on a scale of 1 to 10, 1 being the best and 10 the being worst.

The State Fire Marshal's Office, a part of the State Board of Insurance, uses the PPC ratings calculated by ISO to determine the effectiveness of a city's Fire Department. This rating is formulated considering three elements of a city's fire protection; communications, water supply and the capabilities of the Fire Department to respond to fires.

Many insurance companies use these PPC ratings to assist in calculating insurance premiums for both residences and businesses. This lower rating is a win for the citizens and businesses of Mineral Wells in the way of savings for property insurance premiums.

This was due to the efforts of many including the citizens and City Council of Mineral Wells for supporting all the efforts required to achieve this, the fire fighters that increased their training hours, flushed and maintained fire hydrants, the Water Department for repairing fire hydrants as they were determined to need repair, and the communicators that answer the calls for service and communicate them in an effective and timely manor.

EXHIBITS

1. ISO 3 3Y 2019

COUNCIL ACTION/RECOMMENDATION

ITEM NUMBER 2.
MEETING DATE 11/19/2019



INSURANCE SERVICES OFFICE, INC.

8911 N. Capital of Texas Hwy, Suite 2110, Austin, Texas 78759
Phone: (800) 444-4554, option 2

November 1, 2019

Randy Criswell, City Manager
Mineral Wells, Palo Pinto
115 Southwest 1st Street
Mineral Wells, TX 76067
rcriswell@mineralwellstx.gov

RE: Public Protection Classification Results, Mineral Wells, Palo Pinto / Parker Counties, TX

Dear Mr. Chriswell,

We wish to thank you and the other community officials for your cooperation during our recent Public Protection Classification (PPC) survey. ISO is the leading supplier of statistical, underwriting and actuarial information for the property/casualty insurance industry. Most insurers use the PPC classifications for underwriting and calculating premiums for residential, commercial and industrial properties.

ISO has completed its analysis of the structure fire suppression delivery system provided in your community. We would like to report that ISO has recommended a classification of Class **03/3Y** to the Texas Department of Insurance/State Fire Marshal's Office. Congratulations on this recognition of your commitment to serve the needs of your community's property owners and residents.

Please note that this classification is not effective until the official letter is received from the Texas Department of Insurance/State Fire Marshal's Office listing the approved effective date.

Enclosed is a summary of the ISO analysis of your fire suppression services.

As a reminder, through ongoing research and loss experience analysis, we identified additional differentiation in fire loss experience within our PPC program, which resulted in the revised classifications. We based the differing fire loss experience on the fire suppression capabilities of each community. The new classifications will improve the predictive value for insurers while benefiting both commercial and residential property owners. We've published the new classifications as "X" and "Y" – formerly the "9" and "8B" portion of the split classification, respectively. For example:

- A community currently graded as a split 6/9 classification will now be a split 6/6X classification; with the "6X" denoting what was formerly classified as "9."
- Similarly, a community currently graded as a split 6/8B classification will now be a split 6/6Y classification, the "6Y" denoting what was formerly classified as "8B."
- Communities graded with single "9" or "8B" classifications will remain intact.

If you would like to know how your community's classification could improve, or if you would like to learn about the potential effect of proposed changes to your fire suppression delivery system, please call the phone number listed below.

The PPC program is not intended to analyze all aspects of a comprehensive structure fire suppression delivery system program. It is not for purposes of determining compliance with any state or local law, nor is it for making recommendations about loss prevention or life safety.

If you have any questions about your classification, please let us know.

Sincerely,

Public Protection Department

Public Protection Department
(800) 444-4554, Option 2 FAX: (800) 736-3289

www.isomitigation.com

Encl.

cc w/encl: Mike Pool, Fire Chief – mpool@mineralwellstx.gov
Brenda Reynolds, Communications Supervisor – breynolds@mineralwellstx.gov

**Public Protection Classification
(PPC™)**

Summary Report

Mineral Wells

Texas

Prepared by

**Insurance Services Office, Inc.
8911 N. Capital of Texas Highway,
Westech 360, Building II, Suite 2110
Austin, TX 78759
1-800-444-4554**

Background Information

Introduction

ISO collects and evaluates information from communities in the United States on their structure fire suppression capabilities. The data is analyzed using our Fire Suppression Rating Schedule (FSRS) and then a Public Protection Classification (PPC™) grade is assigned to the community. The surveys are conducted whenever it appears that there is a possibility of a PPC change. As such, the PPC program provides important, up-to-date information about fire protection services throughout the country.

The FSRS recognizes fire protection features only as they relate to suppression of first alarm structure fires. In many communities, fire suppression may be only a small part of the fire department's overall responsibility. ISO recognizes the dynamic and comprehensive duties of a community's fire service, and understands the complex decisions a community must make in planning and delivering emergency services. However, in developing a community's PPC grade, only features related to reducing property losses from structural fires are evaluated. Multiple alarms, simultaneous incidents and life safety are not considered in this evaluation. The PPC program evaluates the fire protection for small to average size buildings. Specific properties with a Needed Fire Flow in excess of 3,500 gpm are evaluated separately and assigned an individual PPC grade.

A community's investment in fire mitigation is a proven and reliable predictor of future fire losses. Statistical data on insurance losses bears out the relationship between excellent fire protection – as measured by the PPC program – and low fire losses. So, insurance companies use PPC information for marketing, underwriting, and to help establish fair premiums for homeowners and commercial fire insurance. In general, the price of fire insurance in a community with a good PPC grade is substantially lower than in a community with a poor PPC grade, assuming all other factors are equal.

ISO is an independent company that serves insurance companies, communities, fire departments, insurance regulators, and others by providing information about risk. ISO's expert staff collects information about municipal fire suppression efforts in communities throughout the United States. In each of those communities, ISO analyzes the relevant data and assigns a PPC grade – a number from 1 to 10. Class 1 represents an exemplary fire suppression program, and Class 10 indicates that the area's fire suppression program does not meet ISO's minimum criteria.

ISO's PPC program evaluates communities according to a uniform set of criteria, incorporating nationally recognized standards developed by the National Fire Protection Association and the American Water Works Association. A community's PPC grade depends on:

- **Needed Fire Flows**, which are representative building locations used to determine the theoretical amount of water necessary for fire suppression purposes.
- **Emergency Communications**, including emergency reporting, telecommunicators, and dispatching systems.
- **Fire Department**, including equipment, staffing, training, geographic distribution of fire companies, operational considerations, and community risk reduction.
- **Water Supply**, including inspection and flow testing of hydrants, alternative water supply operations, and a careful evaluation of the amount of available water compared with the amount needed to suppress fires up to 3,500 gpm.

Data Collection and Analysis

ISO has evaluated and classified over 48,000 fire protection areas across the United States using its FSRS. A combination of meetings between trained ISO field representatives and the dispatch center coordinator, community fire official, and water superintendent is used in conjunction with a comprehensive questionnaire to collect the data necessary to determine the PPC grade. In order for a community to obtain a grade better than a Class 9, three elements of fire suppression features are reviewed. These three elements are Emergency Communications, Fire Department, and Water Supply.

A review of the **Emergency Communications** accounts for 10% of the total classification. This section is weighted at **10 points**, as follows:

- Emergency Reporting 3 points
- Telecommunicators 4 points
- Dispatch Circuits 3 points

A review of the **Fire Department** accounts for 50% of the total classification. ISO focuses on a fire department's first alarm response and initial attack to minimize potential loss. The fire department section is weighted at **50 points**, as follows:

- Engine Companies 6 points
- Reserve Pumpers 0.5 points
- Pump Capacity 3 points
- Ladder/Service Companies 4 points
- Reserve Ladder/Service Trucks 0.5 points
- Deployment Analysis 10 points
- Company Personnel 15 points
- Training (CT + CTT) 9 points
- Operational considerations 2 points
- Community Risk Reduction 5.5 points (in addition to the 50 points above)
- Texas Addendum CAFS Credit 1 point (in addition to the 50 points above)

A review of the **Water Supply** system accounts for 40% of the total classification. ISO reviews the water supply a community uses to determine the adequacy for fire suppression purposes. The water supply system is weighted at **40 points**, as follows:

- Credit for Supply System 30 points
- Hydrant Size, Type & Installation 3 points
- Inspection & Flow Testing of Hydrants 7 points

There is one additional factor considered in calculating the final score – **Divergence**.

Even the best fire department will be less than fully effective if it has an inadequate water supply. Similarly, even a superior water supply will be less than fully effective if the fire department lacks the equipment or personnel to use the water. The FSRS score is subject to modification by a divergence factor, which recognizes disparity between the effectiveness of the fire department and the water supply.

The Divergence factor mathematically reduces the score based upon the relative difference between the fire department and water supply scores. The factor is introduced in the final equation.

PPC Grade

The PPC grade assigned to the community will depend on the community's score on a 100-point scale:

PPC	Points
1	90.00 or more
2	80.00 to 89.99
3	70.00 to 79.99
4	60.00 to 69.99
5	50.00 to 59.99
6	40.00 to 49.99
7	30.00 to 39.99
8	20.00 to 29.99
9	10.00 to 19.99
10	0.00 to 9.99

The classification numbers are interpreted as follows:

- Class 1 through (and including) Class 8 represents a fire suppression system that includes an FSRS creditable dispatch center, fire department, and water supply.
- Class 8B is a special classification that recognizes a superior level of fire protection in otherwise Class 9 areas. It is designed to represent a fire protection delivery system that is superior except for a lack of a water supply system capable of the minimum FSRS fire flow criteria of 250 gpm for 2 hours.
- Class 9 is a fire suppression system that includes a creditable dispatch center, fire department but no FSRS creditable water supply.
- Class 10 does not meet minimum FSRS criteria for recognition, including areas that are beyond five road miles of a recognized fire station.

New PPC program changes effective July 1, 2015 for Texas

We have revised the PPC program to capture the effects of enhanced fire protection capabilities that reduce fire loss and fire severity in Split Class 9 and Split Class 8B areas (as outlined below). This new structure benefits the fire service, community, and property owner.

New classifications

Through ongoing research and loss experience analysis, we identified additional differentiation in fire loss experience within our PPC program, which resulted in the revised classifications. We based the differing fire loss experience on the fire suppression capabilities of each community. The new PPC classes will improve the predictive value for insurers while benefiting both commercial and residential property owners. Here are the new classifications and what they mean.

Split classifications

When we develop a split classification for a community — for example 5/9 — the first number is the class that applies to properties within 5 road miles of the responding fire station and 1,000 feet of a creditable water supply, such as a fire hydrant, suction point, or dry hydrant. The second number is the class that applies to properties within 5 road miles of a fire station but beyond 1,000 feet of a creditable water supply. We have revised the classification to reflect more precisely the risk of loss in a community, replacing Class 9 and 8B in the second part of a split classification with revised designations.

What's changed with the new classifications?

We've published the new classifications as "X" and "Y" — formerly the "9" and "8B" portion of the split classification, respectively. For example:

- A community currently displayed as a split 6/9 classification will now be a split 6/6X classification; with the "6X" denoting what was formerly classified as "9".
- Similarly, a community currently graded as a split 6/8B classification will now be a split 6/6Y classification, the "6Y" denoting what was formerly classified as "8B".
- Communities graded with single "9" or "8B" classifications will remain intact.

Prior Classification	New Classification
1/9	1/1X
2/9	2/2X
3/9	3/3X
4/9	4/4X
5/9	5/5X
6/9	6/6X
7/9	7/7X
8/9	8/8X
9	9

Prior Classification	New Classification
1/8B	1/1Y
2/8B	2/2Y
3/8B	3/3Y
4/8B	4/4Y
5/8B	5/5Y
6/8B	6/6Y
7/8B	7/7Y
8/8B	8/8Y
8B	8B

What's changed?

As you can see, we're still maintaining split classes, but it's how we represent them to insurers that's changed. The new designations reflect a reduction in fire severity and loss and have the potential to reduce property insurance premiums.

Benefits of the revised split class designations

- To the fire service, the revised designations identify enhanced fire suppression capabilities used throughout the fire protection area
- To the community, the new classes reward a community's fire suppression efforts by showing a more reflective designation
- To the individual property owner, the revisions offer the potential for decreased property insurance premiums

New water class

Our data also shows that risks located more than 5 but less than 7 road miles from a responding fire station with a creditable water source within 1,000 feet had better loss experience than those farther than 5 road miles from a responding fire station with no creditable water source. We've introduced a new classification —10W— to recognize the reduced loss potential of such properties.

What's changed with Class 10W?

Class 10W is property-specific. Not all properties in the 5-to-7-mile area around the responding fire station will qualify. The difference between Class 10 and 10W is that the 10W-graded risk or property is within 1,000 feet of a creditable water supply. Creditable water supplies include fire protection systems using hauled water in any of the split classification areas.

What's the benefit of Class 10W?

10W gives credit to risks within 5 to 7 road miles of the responding fire station and within 1,000 feet of a creditable water supply. That's reflective of the potential for reduced property insurance premiums.

What does the fire chief have to do?

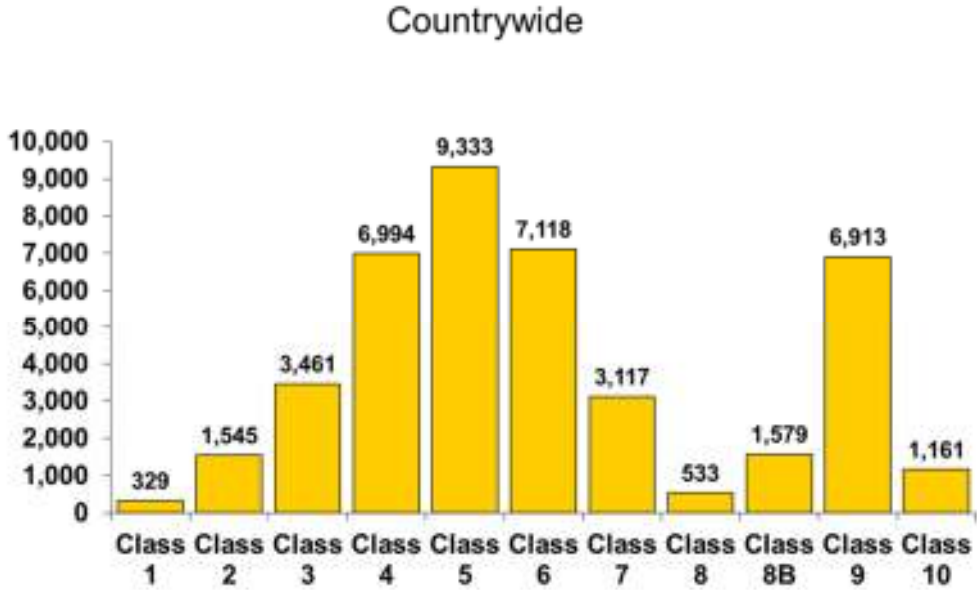
Fire chiefs don't have to do anything at all. The revised classifications went in place automatically effective July 1, 2015.

What if I have additional questions?

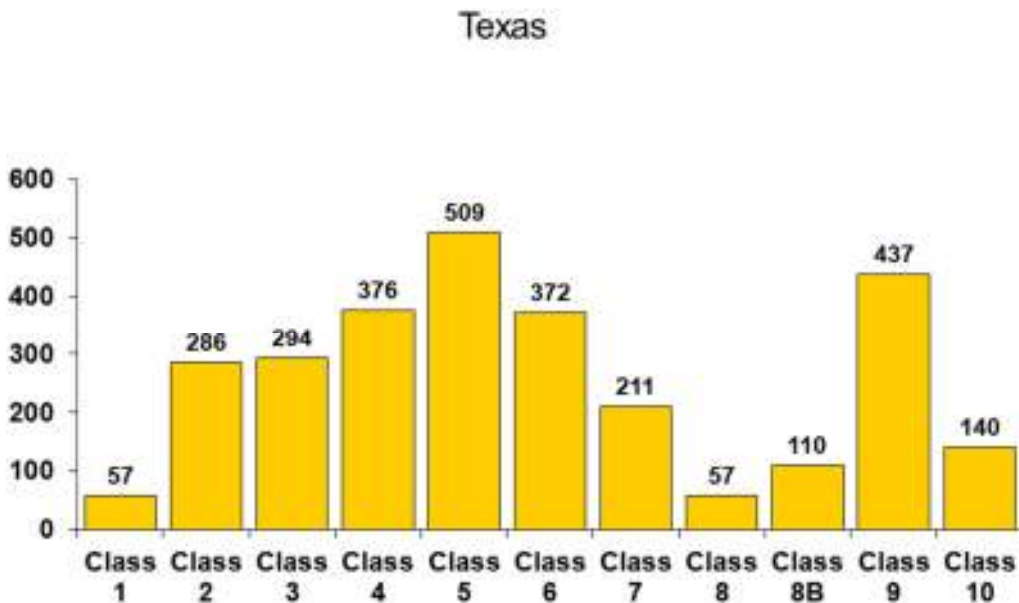
Feel free to contact ISO at 800.444.4554 or email us at PPC-Cust-Serv@iso.com.

Distribution of PPC Grades

The 2018 published countrywide distribution of communities by the PPC grade is as follows:



The 2018 published statewide distribution of communities by the Public Protection Classification number is as follows:



Assistance

The PPC program offers help to communities, fire departments, and other public officials as they plan for, budget, and justify improvements. ISO is also available to assist in the understanding of the details of this evaluation.

The PPC program representatives can be reached by telephone at (800) 444-4554. The technical specialists at this telephone number have access to the details of this evaluation and can effectively speak with you about your questions regarding the PPC program. What's more, we can be reached via the internet at www.isomitigation.com/talk/.

We also have a website dedicated to our Community Hazard Mitigation Classification programs at www.isomitigation.com. Here, fire chiefs, building code officials, community leaders and other interested citizens can access a wealth of data describing the criteria used in evaluating how cities and towns are protecting residents from fire and other natural hazards. This website will allow you to learn more about the PPC program. The website provides important background information, insights about the PPC grading processes and technical documents. ISO is also pleased to offer Fire Chiefs Online — a special, secured website with information and features that can help improve your PPC grade, including a list of the Needed Fire Flows for all the commercial occupancies ISO has on file for your community. Visitors to the site can download information, see statistical results and also contact ISO for assistance.

In addition, on-line access to the FSRS and its commentaries is available to registered customers for a fee. However, fire chiefs and community chief administrative officials are given access privileges to this information without charge.

To become a registered fire chief or community chief administrative official, register at www.isomitigation.com.

PPC Review

ISO concluded its review of the fire suppression features being provided for Mineral Wells. The resulting community classification is **Class 03/3Y**.

If the classification is a single class, the classification applies to properties with a Needed Fire Flow of 3,500 gpm or less in the community. If the classification is a split class (e.g., 6/XX):

- The first class (e.g., “6” in a 6/XX) applies to properties within 5 road miles of a recognized fire station and within 1,000 feet of a fire hydrant or alternate water supply.
- The second class (XX or XY) applies to properties beyond 1,000 feet of a fire hydrant but within 5 road miles of a recognized fire station.
- Alternative Water Supply: The first class (e.g., “6” in a 6/10) applies to properties within 5 road miles of a recognized fire station with no hydrant distance requirement.
- Class 10 applies to properties over 5 road miles of a recognized fire station.
- Class 10W applies to properties within 5 to 7 road miles of a recognized fire station with a recognized water supply within 1,000 feet.
- Specific properties with a Needed Fire Flow in excess of 3,500 gpm are evaluated separately and assigned an individual classification.

FSTRS Feature	Earned Credit	Credit Available
Emergency Communications		
414. Credit for Emergency Reporting	3.00	3
422. Credit for Telecommunicators	3.94	4
432. Credit for Dispatch Circuits	1.95	3
440. Credit for Emergency Communications	8.89	10
Fire Department		
513. Credit for Engine Companies	3.33	6
523. Credit for Reserve Pumpers	0.00	0.50
532. Credit for Pump Capacity	2.10	3
549. Credit for Ladder Service	2.28	4
553. Credit for Reserve Ladder and Service Trucks	0.00	0.50
561. Credit for Deployment Analysis	6.00	10
571. Credit for Company Personnel	7.25	15
581. Credit for Training	5.92	9
580A. Credit for Texas State Training	0.00	3.26*
*Note: Maximum value for 581 + 580A = 9 points		
730. Credit for Operational Considerations	2.00	2
590. Credit for Fire Department	28.88	50
Water Supply		
616. Credit for Supply System	26.15	30
621. Credit for Hydrants	2.98	3
631. Credit for Inspection and Flow Testing	7.00	7
640. Credit for Water Supply	36.13	40
Divergence	-6.51	--
1050. Community Risk Reduction	3.32	5.50
Texas Addendum Credit- CAFS	0.00	1
Total Credit	70.71	106.50

Emergency Communications

Ten percent of a community's overall score is based on how well the communications center receives and dispatches fire alarms. Our field representative evaluated:

- Communications facilities provided for the general public to report structure fires
- Enhanced 9-1-1 Telephone Service including wireless
- Computer-aided dispatch (CAD) facilities
- Alarm receipt and processing at the communication center
- Training and certification of telecommunicators
- Facilities used to dispatch fire department companies to reported structure fires

	Earned Credit	Credit Available
414. Credit Emergency Reporting	3.00	3
422. Credit for Telecommunicators	3.94	4
432. Credit for Dispatch Circuits	1.95	3
Item 440. Credit for Emergency Communications:	8.89	10

Item 414 - Credit for Emergency Reporting (3 points)

The first item reviewed is Item 414 "Credit for Emergency Reporting (CER)". This item reviews the emergency communication center facilities provided for the public to report fires including 911 systems (Basic or Enhanced), Wireless Phase I and Phase II, Voice over Internet Protocol, Computer Aided Dispatch and Geographic Information Systems for automatic vehicle location. ISO uses National Fire Protection Association (NFPA) 1221, *Standard for the Installation, Maintenance and Use of Emergency Services Communications Systems* as the reference for this section.

Item 410. Emergency Reporting (CER)	Earned Credit	Credit Available
<p>A./B. Basic 9-1-1, Enhanced 9-1-1 or No 9-1-1</p> <p>For maximum credit, there should be an Enhanced 9-1-1 system, Basic 9-1-1 and No 9-1-1 will receive partial credit.</p>	20.00	20
<p>1. E9-1-1 Wireless</p> <p>Wireless Phase I using Static ALI (automatic location identification) Functionality (10 points); Wireless Phase II using Dynamic ALI Functionality (15 points); Both available will be 25 points</p>	25.00	25
<p>2. E9-1-1 Voice over Internet Protocol (VoIP)</p> <p>Static VoIP using Static ALI Functionality (10 points); Nomadic VoIP using Dynamic ALI Functionality (15 points); Both available will be 25 points</p>	25.00	25
<p>3. Computer Aided Dispatch</p> <p>Basic CAD (5 points); CAD with Management Information System (5 points); CAD with Interoperability (5 points)</p>	15.00	15
<p>4. Geographic Information System (GIS/AVL)</p> <p>The PSAP uses a fully integrated CAD/GIS management system with automatic vehicle location (AVL) integrated with a CAD system providing dispatch assignments.</p>	15.00	15
<p>Review of Emergency Reporting total:</p>	100.00	100

Item 422- Credit for Telecommunicators (4 points)

The second item reviewed is Item 422 “Credit for Telecommunicators (TC)”. This item reviews the number of Telecommunicators on duty at the center to handle fire calls and other emergencies. All emergency calls including those calls that do not require fire department action are reviewed to determine the proper staffing to answer emergency calls and dispatch the appropriate emergency response. NFPA 1221, *Standard for the Installation, Maintenance and Use of Emergency Services Communications Systems*, recommends that ninety-five percent of emergency calls shall be answered within 15 seconds and ninety-nine percent of emergency calls shall be answered within 40 seconds. In addition, NFPA recommends that eighty percent of emergency alarm processing shall be completed within 60 seconds and ninety-five percent of alarm processing shall be completed within 106 seconds of answering the call.

To receive full credit for operators on duty, ISO must review documentation to show that the communication center meets NFPA 1221 call answering and dispatch time performance measurement standards. This documentation may be in the form of performance statistics or other performance measurements compiled by the 9-1-1 software or other software programs that are currently in use such as Computer Aided Dispatch (CAD) or Management Information System (MIS).

Item 420. Telecommunicators (CTC)	Earned Credit	Credit Available
<p>A1. Alarm Receipt (AR)</p> <p>Receipt of alarms shall meet the requirements in accordance with the criteria of NFPA 1221</p>	19.85	20
<p>A2. Alarm Processing (AP)</p> <p>Processing of alarms shall meet the requirements in accordance with the criteria of NFPA 1221</p>	18.75	20
<p>B. Emergency Dispatch Protocols (EDP)</p> <p>Telecommunicators have emergency dispatch protocols (EDP) containing questions and a decision-support process to facilitate correct call categorization and prioritization.</p>	20.00	20
<p>C. Telecommunicator Training and Certification (TTC)</p> <p>Telecommunicators meet the qualification requirements referenced in NFPA 1061, <i>Standard for Professional Qualifications for Public Safety Telecommunicator</i>, and/or the Association of Public-Safety Communications Officials - International (APCO) <i>Project 33</i>. Telecommunicators are certified in the knowledge, skills, and abilities corresponding to their job functions.</p>	20.00	20
<p>D. Telecommunicator Continuing Education and Quality Assurance (TQA)</p> <p>Telecommunicators participate in continuing education and/or in-service training and quality-assurance programs as appropriate for their positions</p>	20.00	20
<p>Review of Telecommunicators total:</p>	98.60	100

Item 432 - Credit for Dispatch Circuits (3 points)

The third item reviewed is Item 432 “Credit for Dispatch Circuits (CDC)”. This item reviews the dispatch circuit facilities used to transmit alarms to fire department members. A “Dispatch Circuit” is defined in NFPA 1221 as “A circuit over which an alarm is transmitted from the communications center to an emergency response facility (ERF) or emergency response units (ERUs) to notify ERUs to respond to an emergency”. All fire departments (except single fire station departments with full-time firefighter personnel receiving alarms directly at the fire station) need adequate means of notifying all firefighter personnel of the location of reported structure fires. The dispatch circuit facilities should be in accordance with the general criteria of NFPA 1221. “Alarms” are defined in this Standard as “A signal or message from a person or device indicating the existence of an emergency or other situation that requires action by an emergency response agency”.

There are two different levels of dispatch circuit facilities provided for in the Standard – a primary dispatch circuit and a secondary dispatch circuit. In jurisdictions that receive 730 alarms or more per year (average of two alarms per 24-hour period), two separate and dedicated dispatch circuits, a primary and a secondary, are needed. In jurisdictions receiving fewer than 730 alarms per year, a second dedicated dispatch circuit is not needed. Dispatch circuit facilities installed but not used or tested (in accordance with the NFPA Standard) receive no credit.

The score for Credit for Dispatch Circuits (CDC) is influenced by monitoring for integrity of the primary dispatch circuit. There are up to 0.90 points available for this Item. Monitoring for integrity involves installing automatic systems that will detect faults and failures and send visual and audible indications to appropriate communications center (or dispatch center) personnel. ISO uses NFPA 1221 to guide the evaluation of this item. ISO's evaluation also includes a review of the communication system's emergency power supplies.

Item 432 “Credit for Dispatch Circuits (CDC)” = 1.95 points

Fire Department

Fifty percent of a community's overall score is based upon the fire department's structure fire suppression system. ISO's field representative evaluated:

- Engine and ladder/service vehicles including reserve apparatus
- Equipment carried
- Response to reported structure fires
- Deployment analysis of companies
- Available and/or responding firefighters
- Training

	Earned Credit	Credit Available
513. Credit for Engine Companies	3.33	6
523. Credit for Reserve Pumpers	0.00	0.5
532. Credit for Pumper Capacity	2.10	3
549. Credit for Ladder Service	2.28	4
553. Credit for Reserve Ladder and Service Trucks	0.00	0.5
561. Credit for Deployment Analysis	6.00	10
571. Credit for Company Personnel	7.25	15
581. Credit for Training	5.92	9
580A. Supplemental Credit for Texas State Training	0.00	3.26*
*Note: Maximum value for CT + CTT = 9 points	-	-
730. Credit for Operational Considerations	2.00	2
Item 590. Credit for Fire Department:	28.88	50

Basic Fire Flow

The Basic Fire Flow for the community is determined by the review of the Needed Fire Flows for selected buildings in the community. The fifth largest Needed Fire Flow is determined to be the Basic Fire Flow. The Basic Fire Flow has been determined to be 3500 gpm.

Item 513 - Credit for Engine Companies (6 points)

The first item reviewed is Item 513 "Credit for Engine Companies (CEC)". This item reviews the number of engine companies, their pump capacity, hose testing, pump testing and the equipment carried on the in-service pumpers. To be recognized, pumper apparatus must meet the general criteria of NFPA 1901, *Standard for Automotive Fire Apparatus* which include a minimum 250 gpm pump, an emergency warning system, a 300 gallon water tank, and hose. At least 1 apparatus must have a permanently mounted pump rated at 750 gpm or more at 150 psi.

The review of the number of needed pumpers considers the response distance to built-upon areas; the Basic Fire Flow; and the method of operation. Multiple alarms, simultaneous incidents, and life safety are not considered.

The greatest value of A, B, or C below is needed in the fire district to suppress fires in structures with a Needed Fire Flow of 3,500 gpm or less: **3 engine companies**

- a) **0 engine companies** to provide fire suppression services to areas to meet NFPA 1710 criteria or within 1½ miles.
- b) **3 engine companies** to support a Basic Fire Flow of 3500 gpm.
- c) **3 engine companies** based upon the fire department's method of operation to provide a minimum two engine response to all first alarm structure fires.

The FSRS recognizes that there are **2 engine companies** in service.

The FSRS also reviews Automatic Aid. Automatic Aid is considered in the review as assistance dispatched automatically by contractual agreement between two communities or fire districts. That differs from mutual aid or assistance arranged case by case. ISO will recognize an Automatic Aid plan under the following conditions:

- It must be prearranged for first alarm response according to a definite plan. It is preferable to have a written agreement, but ISO may recognize demonstrated performance.
- The aid must be dispatched to all reported structure fires on the initial alarm.
- The aid must be provided 24 hours a day, 365 days a year.

FSRS Item 512.D "Automatic Aid Engine Companies" responding on first alarm and meeting the needs of the city for basic fire flow and/or distribution of companies are factored based upon the value of the Automatic Aid plan (up to 1.00 can be used as the factor). The Automatic Aid factor is determined by a review of the Automatic Aid provider's communication facilities, how they receive alarms from the graded area, inter-department training between fire departments, and the fire ground communications capability between departments.

For each engine company, the credited Pump Capacity (PC), the Hose Carried (HC), the Equipment Carried (EC) all contribute to the calculation for the percent of credit the FSRS provides to that engine company.

Item 513 "Credit for Engine Companies (CEC)" = 3.33 points

Item 523 - Credit for Reserve Pumpers (0.50 points)

The item is Item 523 “Credit for Reserve Pumpers (CRP)”. This item reviews the number and adequacy of the pumpers and their equipment. The number of needed reserve pumpers is 1 for each 8 needed engine companies determined in Item 513, or any fraction thereof.

Item 523 “Credit for Reserve Pumpers (CRP)” = 0.00 points

Item 532 – Credit for Pumper Capacity (3 points)

The next item reviewed is Item 532 “Credit for Pumper Capacity (CPC)”. The total pump capacity available should be sufficient for the Basic Fire Flow of 3500 gpm. The maximum needed pump capacity credited is the Basic Fire Flow of the community.

Item 532 “Credit for Pumper Capacity (CPC)” = 2.10 points

Item 549 – Credit for Ladder Service (4 points)

The next item reviewed is Item 549 “Credit for Ladder Service (CLS)”. This item reviews the number of response areas within the city with 5 buildings that are 3 or more stories or 35 feet or more in height, or with 5 buildings that have a Needed Fire Flow greater than 3,500 gpm, or any combination of these criteria. The height of all buildings in the city, including those protected by automatic sprinklers, is considered when determining the number of needed ladder companies. Response areas not needing a ladder company should have a service company. Ladders, tools and equipment normally carried on ladder trucks are needed not only for ladder operations but also for forcible entry, ventilation, salvage, overhaul, lighting and utility control.

The number of ladder or service companies, the height of the aerial ladder, aerial ladder testing and the equipment carried on the in-service ladder trucks and service trucks is compared with the number of needed ladder trucks and service trucks and an FSRS equipment list. Ladder trucks must meet the general criteria of NFPA 1901, *Standard for Automotive Fire Apparatus* to be recognized.

The number of needed ladder-service trucks is dependent upon the number of buildings 3 stories or 35 feet or more in height, buildings with a Needed Fire Flow greater than 3,500 gpm, and the method of operation.

The FSRS recognizes that there are **2 ladder companies** in service. These companies are needed to provide fire suppression services to areas to meet NFPA 1710 criteria or within 2½ miles and the number of buildings with a Needed Fire Flow over 3,500 gpm or 3 stories or more in height, or the method of operation.

The FSRS recognizes that there are **0 service companies** in service.

Item 549 “Credit for Ladder Service (CLS)” = 2.28 points

Item 553 – Credit for Reserve Ladder and Service Trucks (0.50 points)

The next item reviewed is Item 553 “Credit for Reserve Ladder and Service Trucks (CRLS)”. This item considers the adequacy of ladder and service apparatus when one (or more in larger communities) of these apparatus are out of service. The number of needed reserve ladder and service trucks is 1 for each 8 needed ladder and service companies that were determined to be needed in Item 540, or any fraction thereof.

Item 553 “Credit for Reserve Ladder and Service Trucks (CRLS)” = 0.00 points

Item 561 – Deployment Analysis (10 points)

Next, Item 561 “Deployment Analysis (DA)” is reviewed. This Item examines the number and adequacy of existing engine and ladder-service companies to cover built-upon areas of the city.

To determine the Credit for Distribution, first the Existing Engine Company (EC) points and the Existing Engine Companies (EE) determined in Item 513 are considered along with Ladder Company Equipment (LCE) points, Service Company Equipment (SCE) points, Engine-Ladder Company Equipment (ELCE) points, and Engine-Service Company Equipment (ESCE) points determined in Item 549.

Secondly, as an alternative to determining the number of needed engine and ladder/service companies through the road-mile analysis, a fire protection area may use the results of a systematic performance evaluation. This type of evaluation analyzes computer-aided dispatch (CAD) history to demonstrate that, with its current deployment of companies, the fire department meets the time constraints for initial arriving engine and initial full alarm assignment in accordance with the general criteria of in NFPA 1710, *Standard for the Organization and Deployment of Fire Suppression Operations, Emergency Medical Operations, and Special Operations to the Public by Career Fire Departments*.

A determination is made of the percentage of built upon area within 1½ miles of a first-due engine company and within 2½ miles of a first-due ladder-service company.

Item 561 “Credit Deployment Analysis (DA)” = 6.00 points

Item 571 – Credit for Company Personnel (15 points)

Item 571 “Credit for Company Personnel (CCP)” reviews the average number of existing firefighters and company officers available to respond to reported first alarm structure fires in the city.

The on-duty strength is determined by the yearly average of total firefighters and company officers on-duty considering vacations, sick leave, holidays, “Kelley” days and other absences. When a fire department operates under a minimum staffing policy, this may be used in lieu of determining the yearly average of on-duty company personnel.

Firefighters on apparatus not credited under Items 513 and 549 that regularly respond to reported first alarms to aid engine, ladder, and service companies are included in this item as increasing the total company strength.

Firefighters staffing ambulances or other units serving the general public are credited if they participate in fire-fighting operations, the number depending upon the extent to which they are available and are used for response to first alarms of fire.

On-Call members are credited on the basis of the average number staffing apparatus on first alarms. Off-shift career firefighters and company officers responding on first alarms are considered on the same basis as on-call personnel. For personnel not normally at the fire station, the number of responding firefighters and company officers is divided by 3 to reflect the time needed to assemble at the fire scene and the reduced ability to act as a team due to the various arrival times at the fire location when compared to the personnel on-duty at the fire station during the receipt of an alarm.

The number of Public Safety Officers who are positioned in emergency vehicles within the jurisdiction boundaries may be credited based on availability to respond to first alarm structure fires. In recognition of this increased response capability the number of responding Public Safety Officers is divided by 2.

The average number of firefighters and company officers responding with those companies credited as Automatic Aid under Items 513 and 549 are considered for either on-duty or on-call company personnel as is appropriate. The actual number is calculated as the average number of company personnel responding multiplied by the value of AA Plan determined in Item 512.D.

The maximum creditable response of on-duty and on-call firefighters is 12, including company officers, for each existing engine and ladder company and 6 for each existing service company.

Chief Officers are not creditable except when more than one chief officer responds to alarms; then extra chief officers may be credited as firefighters if they perform company duties.

The FSRs recognizes **7.26 on-duty personnel** and an average of **0.00 on-call personnel** responding on first alarm structure fires.

Item 571 “Credit for Company Personnel (CCP)” = 7.25 points

Item 581 – Credit for Training (9 points)

Training	Earned Credit	Credit Available
<p>A. Facilities, and Use</p> <p>For maximum credit, each firefighter should receive 18 hours per month in structure fire related subjects as outlined in NFPA 1001.</p>	19.60	35
<p>B. Company Training</p> <p>For maximum credit, each firefighter should receive 16 hours per month in structure fire related subjects as outlined in NFPA 1001.</p>	17.13	25
<p>C. Classes for Officers</p> <p>For maximum credit, each officer should be certified in accordance with the general criteria of NFPA 1021. Additionally, each officer should receive 12 hours of continuing education on or off site.</p>	8.25	12
<p>D. New Driver and Operator Training</p> <p>For maximum credit, each new driver and operator should receive 60 hours of driver/operator training per year in accordance with NFPA 1002 and NFPA 1451.</p>	5.00	5
<p>E. Existing Driver and Operator Training</p> <p>For maximum credit, each existing driver and operator should receive 12 hours of driver/operator training per year in accordance with NFPA 1002 and NFPA 1451.</p>	5.00	5
<p>F. Training on Hazardous Materials</p> <p>For maximum credit, each firefighter should receive 6 hours of training for incidents involving hazardous materials in accordance with NFPA 472.</p>	1.00	1
<p>G. Recruit Training</p> <p>For maximum credit, each firefighter should receive 240 hours of structure fire related training in accordance with NFPA 1001 within the first year of employment or tenure.</p>	5.00	5
<p>H. Pre-Fire Planning Inspections</p> <p>For maximum credit, pre-fire planning inspections of each commercial, industrial, institutional, and other similar type building (all buildings except 1-4 family dwellings) should be made annually by company members. Records of inspections should include up-to date notes and sketches.</p>	4.80	12

Item 580 “Credit for Training (CT)” = 5.92 points

Item 580A – Supplemental Credit for Texas State Training (3.26 points*)

This item provides specific recognition for fire department training conducted by the State Firemen's and Fire Marshal's Association, Texas A & M University, and the Texas Commission on Fire Protection. Item 580 applies only to local training activities.

$$CTT = \text{CERT} + \text{FTS} / \text{TOTAL \# IN FIRE DEPT} \times 3.26$$

CERT = Total number of volunteers certified through either: The State Firemen's and Fire Marshals' Association of Texas as basic, intermediate, or advanced firefighter (this excludes the introductory certification) OR The Texas Commission on Fire Protection as a volunteer firefighter.

FTS = Total number of firefighters in attendance of a prevention or suppression course at Firemen's Training School at Texas A & M University within the last 3 years.

TOTAL # IN FIRE DEPT. = Total number of firefighters (paid and/or volunteer) in the fire department.

*Note: The maximum value for CT + CTT = 9 points

Item 580A “Supplemental Credit for Texas State Training (CTT)” = 0.00 points

Item 730 – Operational Considerations (2 points)

Item 730 “Credit for Operational Considerations (COC)” evaluates fire department standard operating procedures and incident management systems for emergency operations involving structure fires.

Operational Considerations	Earned Credit	Credit Available
Standard Operating Procedures The department should have established SOPs for fire department general emergency operations	50	50
Incident Management Systems The department should use an established incident management system (IMS)	50	50
Operational Considerations total:	100	100

Item 730 “Credit for Operational Considerations (COC)” = 2.00 points

Water Supply

Forty percent of a community's overall score is based on the adequacy of the water supply system. The ISO field representative evaluated:

- the capability of the water distribution system to meet the Needed Fire Flows at selected locations up to 3,500 gpm.
- size, type and installation of fire hydrants.
- inspection and flow testing of fire hydrants.

	Earned Credit	Credit Available
616. Credit for Supply System	26.15	30
621. Credit for Hydrants	2.98	3
631. Credit for Inspection and Flow Testing	7.00	7
Item 640. Credit for Water Supply:	36.13	40

Item 616 – Credit for Supply System (30 points)

The first item reviewed is Item 616 “Credit for Supply System (CSS)”. This item reviews the rate of flow that can be credited at each of the Needed Fire Flow test locations considering the supply works capacity, the main capacity and the hydrant distribution. The lowest flow rate of these items is credited for each representative location. A water system capable of delivering 250 gpm or more for a period of two hours plus consumption at the maximum daily rate at the fire location is considered minimum in the ISO review.

Where there are 2 or more systems or services distributing water at the same location, credit is given on the basis of the joint protection provided by all systems and services available.

The supply works capacity is calculated for each representative Needed Fire Flow test location, considering a variety of water supply sources. These include public water supplies, emergency supplies (usually accessed from neighboring water systems), suction supplies (usually evidenced by dry hydrant installations near a river, lake or other body of water), and supplies developed by a fire department using large diameter hose or vehicles to shuttle water from a source of supply to a fire site. The result is expressed in gallons per minute (gpm).

The normal ability of the distribution system to deliver Needed Fire Flows at the selected building locations is reviewed. The results of a flow test at a representative test location will indicate the ability of the water mains (or fire department in the case of fire department supplies) to carry water to that location.

The hydrant distribution is reviewed within 1,000 feet of representative test locations measured as hose can be laid by apparatus.

For maximum credit, the Needed Fire Flows should be available at each location in the district. Needed Fire Flows of 2,500 gpm or less should be available for 2 hours; and Needed Fire Flows of 3,000 and 3,500 gpm should be obtainable for 3 hours.

Item 616 “Credit for Supply System (CSS)” = 26.15 points

Item 621 – Credit for Hydrants (3 points)

The second item reviewed is Item 621 “Credit for Hydrants (CH)”. This item reviews the number of fire hydrants of each type compared with the total number of hydrants.

There are a total of 938 hydrants in the graded area.

620. Hydrants, - Size, Type and Installation	Number of Hydrants
A. With a 6 -inch or larger branch and a pumper outlet with or without 2½ - inch outlets	931
B. With a 6 -inch or larger branch and no pumper outlet but two or more 2½ -inch outlets, or with a small foot valve, or with a small barrel	0
C./D. With only a 2½ -inch outlet or with less than a 6 -inch branch	7
E./F. Flush Type, Cistern, or Suction Point	0

Item 621 “Credit for Hydrants (CH)” = 2.98 points

Item 630 – Credit for Inspection and Flow Testing (7 points)

The third item reviewed is Item 630 “Credit for Inspection and Flow Testing (CIT)”. This item reviews the fire hydrant inspection frequency, and the completeness of the inspections. Inspection of hydrants should be in accordance with AWWA M-17, *Installation, Field Testing and Maintenance of Fire Hydrants*.

Frequency of Inspection (FI): Average interval between the 3 most recent inspections.

Frequency	Points
1 year	30
2 years	20
3 years	10
4 years	5
5 years or more	No Credit

Note: The points for inspection frequency are reduced by 10 points if the inspections are incomplete or do not include a flushing program. An additional reduction of 10 points are made if hydrants are not subjected to full system pressure during inspections. If the inspection of cisterns or suction points does not include actual drafting with a pumper, or back-flushing for dry hydrants, 20 points are deducted.

Total points for Inspections = 4.00 points

Frequency of Fire Flow Testing (FF): Average interval between the 3 most recent inspections.

Frequency	Points
5 years	40
6 years	30
7 years	20
8 years	10
9 years	5
10 years or more	No Credit

Total points for Fire Flow Testing = 3.00 points

Item 631 “Credit for Inspection and Fire Flow Testing (CIT)” = 7.00 points

Divergence = -6.51

The Divergence factor mathematically reduces the score based upon the relative difference between the fire department and water supply scores. The factor is introduced in the final equation.

Texas Addendum Credit (1.00 points)

Compressed Air Foam System, when carried and used in the extinguishment of all structure fires.

“Texas Addendum Credit (CTX)” = 0.00

Community Risk Reduction

	Earned Credit	Credit Available
1025. Credit for Fire Prevention and Code Enforcement (CPCE)	1.56	2.2
1033. Credit for Public Fire Safety Education (CFSE)	0.94	2.2
1044. Credit for Fire Investigation Programs (CIP)	0.82	1.1
Item 1050. Credit for Community Risk Reduction	3.32	5.50

Item 1025 – Credit for Fire Prevention Code Adoption and Enforcement (2.2 points)	Earned Credit	Credit Available
Fire Prevention Code Regulations (PCR) Evaluation of fire prevention code regulations in effect.	10.00	10
Fire Prevention Staffing (PS) Evaluation of staffing for fire prevention activities.	2.08	8
Fire Prevention Certification and Training (PCT) Evaluation of the certification and training of fire prevention code enforcement personnel.	2.50	6
Fire Prevention Programs (PCP) Evaluation of fire prevention programs.	13.70	16
Review of Fire Prevention Code and Enforcement (CPCE) subtotal:	28.28	40

Item 1033 – Credit for Public Fire Safety Education (2.2 points)	Earned Credit	Credit Available
Public Fire Safety Educators Qualifications and Training (FSQT) Evaluation of public fire safety education personnel training and qualification as specified by the authority having jurisdiction.	6.00	10
Public Fire Safety Education Programs (FSP) Evaluation of programs for public fire safety education.	11.00	30
Review of Public Safety Education Programs (CFSE) subtotal:	17.00	40

Item 1044 – Credit for Fire Investigation Programs (1.1 points)	Earned Credit	Credit Available
Fire Investigation Organization and Staffing (IOS) Evaluation of organization and staffing for fire investigations.	8.00	8
Fire Investigator Certification and Training (IQT) Evaluation of fire investigator certification and training.	0.90	6
Use of National Fire Incident Reporting System (IRS) Evaluation of the use of the National Fire Incident Reporting System (NFIRS) for the 3 years before the evaluation.	6.00	6
Review of Fire Prevention Code and Enforcement (CPCE) subtotal:	14.90	20

Summary of PPC Review
for
Mineral Wells

FSRS Item	Earned Credit	Credit Available
Emergency Communications		
414. Credit for Emergency Reporting	3.00	3
422. Credit for Telecommunicators	3.94	4
432. Credit for Dispatch Circuits	1.95	3
440. Credit for Emergency Communications	8.89	10
Fire Department		
513. Credit for Engine Companies	3.33	6
523. Credit for Reserve Pumpers	0.00	0.5
532. Credit for Pumper Capacity	2.10	3
549. Credit for Ladder Service	2.28	4
553. Credit for Reserve Ladder and Service Trucks	0.00	0.5
561. Credit for Deployment Analysis	6.00	10
571. Credit for Company Personnel	7.25	15
581. Credit for Training	5.92	9
580A. Credit for Texas State Training	0.00	3.26*
*Note: Maximum value for 581 + 580A = 9 points		
730. Credit for Operational Considerations	2.00	2
590. Credit for Fire Department	28.88	50
Water Supply		
616. Credit for Supply System	26.15	30
621. Credit for Hydrants	2.98	3
631. Credit for Inspection and Flow Testing	7.00	7
640. Credit for Water Supply	36.13	40
Divergence		
1050. Community Risk Reduction	-6.51	--
Texas Addendum Credit- CAFS	3.32	5.50
	0.00	1
Total Credit	70.71	106.5

Final Community Classification = 03/3Y



Insurance Services Office, Inc.

Texas State Exceptions

8911 N. Capital of Texas Highway, Westech 360, Building II, Suite 2110
 Austin, TX 78759
 Phone: (800) 444-4554 FAX: (800) 736-3289

Community: Mineral Wells County: Texas(Palo Pinto, Parker),
 Evaluator: Edwards, Jeffrey Date: 07/02/2019
 Training (CTT): 0 Population: 17,000
 Texas Exceptions (CTX): 0 BFF: 3,500

****** Texas Exceptions ******

The following CTX criteria pertaining to the CAFS applies specifically to the State of Texas.

TX-A: Compressed Air Foam Systems (CAFS) 1.0 (Maximum Credit)
 CAFS: 0.00

Item 580 J: Supplemental Credit for Training (CTT) 3.26 (Maximum Credit)

CERT: 0 FTS: 0 X 3.26 CTT: 0.00
 Total # in Fire Dept: 0

****** Item 590 Credit for Fire Department ******

CEC + CRP + CPC + CLS + CRLS + CDA + CCP + CT + COC + CTT = CFD: 70.71
 Note: Maximum value of CT + CTT = 9.00

CEC: <u>3.33</u>	CLS: <u>2.28</u>	CCP: <u>7.25</u>	
CRP: <u>0.00</u>	CRLS: <u>0.00</u>	CTC: <u>5.92</u>	
CPC: <u>2.10</u>	CD: <u>6.00</u>	COC: <u>2.00</u>	CTT: <u>0.00</u>

GRADING SUMMARY
TEXAS STATE EXCEPTIONS TO THE FSRS
Compressed Air Foam System (CAFS)

Will at least one of the apparatus listed below be equipped with the CAFS Unit respond on all structure fires on first alarm assignment?

No

Note: Fire Pump has a minimum of 750 gpm
 SCFM Air Compressor has a minimum of 120 SCFM permanently mounted
 Class A Foam Pump concentrat has a minimum of 2.5 gpm
 Class A Foam Tank capacity has a minimum of 20 gallons

Appartus	Type	Fire Pump	SCFM Air Compressor	Class A Foam Pump	Class A Foam Tank
E-1	Engine	1500	0	0	0
Q-2	Engine	1500	0	0	0
E-137	Engine	1000	0	0	0
138	Engine	1000	0	0	0
T-34	Engine	1000	0	0	0
E-2	Engine	1000	0	0	0

INSURANCE SERVICES OFFICE, INC.
Class 8B Eligibility

Community: Mineral Wells
County: TEXAS(Palo Pinto, Parker),
Class: 03/3Y

State: TEXAS
Survey Date: 07/02/2019
Eligible for Class 8B: **TRUE**

-
- TRUE Does the combined primary fire department and automatic aid respond equal an average of 6 firefighters on first alarm responses to structure fires?
- TRUE Does the primary responding fire department (and automatic aid fire department(s), if applicable) conduct a minimum average of 24 hours of structural fire fighting training per year for each active firefighter?
- TRUE Can the fire department - on its own or with the help of automatic-aid fire departments deliver an uninterrupted fire flow of 200 gpm for 20 minutes, beginning within 5 minutes of the first arriving engine company to the built upon areas of their service area within five (all weather) road miles of a recognized fire station?
- TRUE Is the communication center(s) eligible for a credit of 4 points under item 440 (Credit for Emergency Communications)?
- TRUE Does the fire department respond with an apparatus equipped to at least 40% according to section 512; taking into considerable pumping capacity, hose quantity and major equipment?

INSURANCE SERVICES OFFICE, INC.
HYDRANT FLOW DATA SUMMARY

City Mineral Wells
 County Texas(Palo Pinto, Parker), State TEXAS (42) Witnessed by: Mineral Wells Fire Department Date: Jul 25, 2016

TEST NO.	TYPE DIST.*	TEST LOCATION	SERVICE	FLOW - GPM Q=(29.83(C(d ²)p ^{0.5}))				PRESSURE PSI		FLOW -AT 20 PSI		REMARKS***	MODEL TYPE
				INDIVIDUAL HYDRANTS			TOTAL	STATIC	RESID.	NEEDED **	AVAIL.		
1		2901 East Hubbard	Mineral Wells, Main	1550	0	0	1550	92	70	3500	2900		
10		2801 Hwy 180	Mineral Wells, Main	1500	0	0	1500	90	60	5000	2400		
10.1		2801 Hwy 180	Mineral Wells, Main	1500	0	0	1500	90	60	1750	2400		
11		300 NW 7th Ave	Mineral Wells, Main	1190	0	0	1190	90	80	6500	3400		
11.1		300 NW 7th Ave	Mineral Wells, Main	1190	0	0	1190	90	80	2000	3400		
12		1401 SE 25th Ave	Mineral Wells, Main	1450	0	0	1450	80	66	3500	3200		
13		1413 SE 6th St	Mineral Wells, Main	1300	0	0	1300	98	90	3000	4400		
14		1202 SE 6th Ave	Mineral Wells, Main	1570	0	0	1570	92	70	3000	3000		
15		109 SW Martin Luther King Jr St	Mineral Wells, Main	1190	0	0	1190	95	85	3500	3500		
2		DOWNING HANGER	Mineral Wells, Main	990	0	0	990	80	57	5000	1700		
2.1		DOWNING HANGER	Mineral Wells, Main	990	0	0	990	80	57	3000	1700		
4		HYDRANT AT ENTRANCE	Mineral Wells, Main	840	0	0	840	90	50	4500	1100		
4.1		HYDRANT AT ENTRANCE	Mineral Wells, Main	1060	0	0	1060	90	65	4500	1800		
4.2		HYDRANT AT ENTRANCE	Mineral Wells, Main	1060	0	0	1060	90	65	3500	1800		
5		REAR OF TRACTOR SUPPLY	Mineral Wells, Main	1300	0	0	1300	85	82	4000	6800		
5.1		BEHIND TRACTOR SUPPLY	Mineral Wells, Main	1300	0	0	1300	85	82	2500	6800		

THE ABOVE LISTED NEEDED FIRE FLOWS ARE FOR PROPERTY INSURANCE PREMIUM CALCULATIONS ONLY AND ARE NOT INTENDED TO PREDICT THE MAXIMUM AMOUNT OF WATER REQUIRED FOR A LARGE SCALE FIRE CONDITION.

THE AVAILABLE FLOWS ONLY INDICATE THE CONDITIONS THAT EXISTED AT THE TIME AND AT THE LOCATION WHERE TESTS WERE WITNESSED.

*Comm = Commercial; Res = Residential.

**Needed is the rate of flow for a specific duration for a full credit condition. Needed Fire Flows greater than 3,500 gpm are not considered in determining the classification of the city when using the Fire Suppression Rating Schedule.

*** (A)-Limited by available hydrants to gpm shown. Available facilities limit flow to gpm shown plus consumption for the needed duration of (B)-2 hours, (C)-3 hours or (D)-4 hours.

INSURANCE SERVICES OFFICE, INC.
HYDRANT FLOW DATA SUMMARY

City Mineral Wells
 County Texas(Palo Pinto, Parker), State TEXAS (42) Witnessed by: Mineral Wells Fire Department Date: Jul 25, 2016

TEST NO.	TYPE DIST.*	TEST LOCATION	SERVICE	FLOW - GPM				PRESSURE		FLOW -AT 20 PSI		REMARKS***	MODEL TYPE
				INDIVIDUAL HYDRANTS			TOTAL	PSI		NEEDED **	AVAIL.		
								STATIC	RESID.				
6		NORTH OAK ANS NW 2NS ST	Mineral Wells, Main	1100	0	0	1100	85	82	3500	5800		
7		160 SE 25TH AVE	Mineral Wells, Main	1030	0	0	1030	85	73	1000	2600		
8		525 Tradeway	Mineral Wells, Main	1400	0	0	1400	100	70	3500	2400		
9		601 FM 1821	Mineral Wells, Main	1400	0	0	1400	90	85	6000	5800		
9.1		601 FM 1821	Mineral Wells, Main	1400	0	0	1400	90	85	1750	5800		

THE ABOVE LISTED NEEDED FIRE FLOWS ARE FOR PROPERTY INSURANCE PREMIUM CALCULATIONS ONLY AND ARE *NOT* INTENDED TO PREDICT THE MAXIMUM AMOUNT OF WATER REQUIRED FOR A LARGE SCALE FIRE CONDITION.

THE AVAILABLE FLOWS ONLY INDICATE THE CONDITIONS THAT EXISTED AT THE TIME AND AT THE LOCATION WHERE TESTS WERE WITNESSED.

*Comm = Commercial; Res = Residential.

**Needed is the rate of flow for a specific duration for a full credit condition. Needed Fire Flows greater than 3,500 gpm are not considered in determining the classification of the city when using the Fire Suppression Rating Schedule.

*** (A)-Limited by available hydrants to gpm shown. Available facilities limit flow to gpm shown plus consumption for the needed duration of (B)-2 hours, (C)-3 hours or (D)-4 hours.

AGENDA ITEM COMMENTARY

ITEM TITLE

Consider and take appropriate action on minutes of meeting held November 5, 2019.

INITIATOR/STAFF INFORMATION SOURCE

Peggy Clifton, City Clerk

BACKGROUND

EXHIBITS

1. 2019-11-05 Minutes

COUNCIL ACTION/RECOMMENDATION

Approve

ITEM NUMBER 3.
MEETING DATE 11/19/2019

**MINUTES
REGULAR MEETING
MINERAL WELLS CITY COUNCIL
CITY HALL ANNEX
November 5, 2019 - 6:00 PM**

**Audio recordings of the City Council meetings are available on the City's website at
mineralwellstx.gov**

Call to Order

Invocation: Pastor Nathan Buchanan of the First Baptist Church of Mineral Wells

Pledges of Allegiance to U.S. and Texas Flags

PRESENTATION

Receive information from City Clerk regarding Santa's mailbox. Receive report from Andy Tarkington, Parks and Recreation Supervisor, regarding Southeast Park and other possible items.

Mrs. Clifton spoke about the new Santa's mailbox that is available at City Hall.

Mr. Tarkington gave a report regarding the Southeast Park.

PUBLIC COMMENT

This is an opportunity for the public to address the governing body on any matter, except public hearings that are included on the agenda. Comments related to public hearings will be heard when the specific hearing begins. Public comments are limited to three (3) minutes per speaker, unless the speaker requires the assistance of a translator, in which case the speaker is limited to six (6) minutes, in accordance with applicable law. To address the governing body, each speaker must complete a Speaker Form and provide it to the City Clerk prior to the start of the meeting. Each speaker shall approach the podium and state his/her name and address before speaking. Speakers shall address the governing body with civility that is conducive to appropriate public discussion. Speakers can address only the governing body and not individual city officials or employees. The public cannot speak from the gallery but only from the podium. Per the Texas Open Meetings Act, the governing body is not permitted to take action on or discuss any item not listed on the agenda. The Council may: (1) make a statement of fact regarding the item; (2) make a recitation of existing policy regarding the item; or (3) propose the item be placed on a future agenda, in accordance with Council procedures.

Two people had signed to speak and Mayor Perricone recognized each in turn. Terri Blevins of 2807 N. Murco Drive spoke regarding agendas, sanctuary city, the Baker MOU, and signs. Terry Lundy of 372 Hideaway Acres spoke regarding the Baker and the City Council.

CONSENT AGENDA

Following a motion made by Mr. Light and seconded by Ms. Johnson, the following consent agenda was approved by a vote of 6-0-1 with Mayor Perricone abstaining.

- (5) 1. Consider and take appropriate action on minutes of meetings held October 1, 2019, October 08, 2019, and October 15, 2019.
- (21) 2. Consider and take appropriate action on budgeted expenditures over \$500.
- (23) 3. Consider and take appropriate action on Financial Report for the month ended August 31, 2019.
- (24) 4. Consider and take appropriate action regarding the Investment Report for the Quarter ended June 2019.
- (36) 5. Consider and take appropriate action on the annual audit of seized, forfeited, and expended funds held by the Police Department as required by Chapter 59 of the Texas Code of Criminal Procedure.
- (53) 6. Consider and take appropriate action approving Pay Draw #8 (**Final Payment**) in the Total Amount of \$49,202.54 to Jackson Construction, Septic, and Environmental Services, plus \$2,775.00 to Enprotec/Hibbs & Todd for engineering services on Community Development Block Grant (CDBG) fire hydrant project.
- (82) 7. Consider and take appropriate action on pay request from Schrickel, Rollins and Associates, Inc./Parkhill, Smith & Cooper, Inc. in the amount of \$34,450.00 for professional engineering services on Phase II and III of the US Hwy. 180 West Waterline Project and the 2018 Street and Utilities Improvement Projects.

ITEMS FOR INDIVIDUAL CONSIDERATION

City Attorney Andy Messer stated that since he had just received a lawsuit the Mayor filed against the City, he needed time to see how it impacted the current agenda items. He asked the Council to take a recess so that he could consult with the City Manager. Mrs. Watson moved and Mr. Shoemaker seconded that the Council recess for 15 minutes. Motion carried 7-0. Council went into recess at approximately 6:20 p.m.

The City Council reconvened at 6:39 p.m. Mr. Messer stated that some of the things in the petition are directly or indirectly related to some of the agenda items and recommended that Council table Item's numbered 8,9,13, and 14a(i). Mrs. Watson moved and Ms. Johnson seconded to table Item's numbered 8,9,13, and 14a(i). Motion carried 6-0-1 with Mayor Perricone abstaining.

- (86) 8. Consider and take appropriate action on a resolution providing guidelines related to Council members dealing with Administrative Service, pursuant to Article III, Sec. 28 of the City's Charter.

This item was voted on to table at the beginning of Items for Individual Consideration. Item tabled.

- (87) 9. Consider and take appropriate action on a resolution providing clarifying guidelines on the responsibility of Council members to maintain meeting decorum via enforcement of the rules of order.

This item was voted on to table at the beginning of Items for Individual Consideration. Item tabled.

- (88) 10. Consider and take appropriate action for approval to advertise and receive bids for three separate sewage lift station generators located throughout the City of Mineral Wells, to be funded by a FEMA Hazard Mitigation Grant Program.

Mr. Neal stated this was for approval to advertise and receive bids for a FEMA Hazard Mitigation Grant Program-funded project for three separate sewage lift station generators to run in the paper November 9, 2019 and November 16, 2019, with bid proposals to be received and opened on December 10, 2019 at 2:00 p.m. The recommendation for the award of bid will be presented at the City Council meeting on December 17, 2019. Mr. Light moved and Mrs. Underwood seconded to authorize the advertisement to receive bids for three separate sewage lift station generators located throughout the City of Mineral Wells, to be funded by a FEMA Hazard Mitigation Grant Program. Motion carried 7-0.

- (162) 11. Receive an update on the status of the City's application for participation in the National Register of Historic Places Program.

Mr. Moran stated that he received an email from the State regarding the National Register of Historic Places Program and they want to hold a Public Hearing November 20, 2019 at the City Council Chambers. After that hearing, there will be a hearing with the State Board of Review. No action taken.

- (163) 12. Consider and take appropriate action on establishment of a Main Street Advisory Board.

Mr. Moran stated that the City was presented a plaque from the Texas Historic Commission welcoming the City of Mineral Wells into the Texas Main Street Program and presented it to Council. He stated that now that the City was part of the program, a Main Street Advisory Board would need to be established. He thought the Council needed to create a sub-committee. Ms. Johnson, Mr. Light, and Mr. Shoemaker said they would serve. Mrs. Watson moved and Mr. Tomlin seconded that Councilmembers Light, Johnson, and Shoemaker, as well as the City Manager and the Finance Director be appointed to serve on a Main Street Task Force Sub-committee. Motion carried 7-0.

13. Future Agenda Items/Requests by Councilmembers to be on the next agenda

This item was voted on to table at the beginning of Items for Individual Consideration. Item tabled.

14. EXECUTIVE SESSION

Item 14a(1) was voted on to table at the beginning of Items for Individual Consideration. Item tabled. Mayor Perricone announced that Council would go into Executive Session at 6:51 p.m. In accordance with Texas Government Code, Section 551.001, et seq., the City Council will recess into Executive Session (closed meeting) to discuss the following:

- a. Section 551.071(1),(2): Consultation with attorney regarding pending or contemplated litigation or settlement offer; or on a matter in which the duty of the attorney to the governmental body under the Texas Disciplinary Rules of Professional Conduct of the State Bar of Texas clearly conflicts with this chapter, re: (i) rules for council review of certified agenda(s) or recording(s), including request by Mayor for documents and information related to development of the Baker Hotel; (ii) liability for ADA non-compliance; and (iii) Haunted Hill House.

No action taken.

- b. Section 551.072: Deliberate the purchase, exchange, lease, or value of real property, re: Lee Road property and other possible acquisition(s).

No action taken.

15. RECONVENE INTO OPEN SESSION:

In accordance with Texas Government Code, Chapter 551, the City Council reconvened into Regular Session at 7:18 p.m. to consider action, if any, on matters discussed in Executive Session. No action taken.

16. Adjourn

There was no further business and the meeting adjourned at 7:19 p.m.

Christopher M. Perricone, Mayor

ATTEST:

Peggy Clifton, City Clerk

APPROVED: _____

AGENDA ITEM COMMENTARY

ITEM TITLE

Consider and take appropriate action on budgeted expenditures over \$500.

INITIATOR/STAFF INFORMATION SOURCE

John Moran, Director of Finance

BACKGROUND

EXHIBITS

1. OVER \$500 FY19-20

COUNCIL ACTION/RECOMMENDATION

ITEM NUMBER 4.
MEETING DATE 11/19/2019

PAYMENT APPROVAL - RATIFICATIONS
 11/19/19 COUNCIL MEETING - EXPENDITURES OVER \$500
 APPROVALS

FUND	VENDORS	DESCRIPTION/BUDGET INFORMATION	BUDGETED	% SPENT	AMOUNT	FOOTNOTE
GENERAL	Inspirius, LLC	Service Award Pins (2018-2019)	\$17,500.00	23.26	\$1,160.64	
GENERAL	The Logo Shop	Service Awards	\$17,500.00	23.26	\$1,108.95	
GENERAL	Motorola Solutions, Inc.	Annual Software Maintenance - Spillman CAD & RMS Software	\$125,000.00	22.39	\$28,669.15	
GENERAL	Anderson Software, Inc.	Annual Subscription Renewal for P3 Anonymous Tip Mgmt. System	\$125,000.00	22.39	\$1,000.00	
GENERAL	American Tire Distributors	Tires for Unit #430	\$35,500.00	5.22	\$718.11	
GENERAL	Sam Packs' Five Star Ford	4 new police patrol vehicles/with equipment	\$225,000.00	0.00	\$228,008.00	
GENERAL	Lonestar Fire Specialties	Annual pump testing for Engine 1, Squad 1 and Quint 2	\$16,100.00	6.21	\$1,025.00	
GENERAL	Allstar Athletics	Fire/EMS T-shirts (uniforms)	\$13,000.00	1.00	\$725.50	
GENERAL	Emergicon	Payment due for 2018-2019 Ambulance Supplement Program	\$50,000.00	0.05	\$4,923.47	
GENERAL	M-Pak	Flying Cross Fire Resistant Pants for firefighters	\$13,000.00	1.00	\$4,840.68	
GENERAL	Murphy and Murphy	Concrete	\$150,000.00	2.76	\$4,781.25	
GENERAL	iRef Big Balls Up	Provide volleyball officials for adult and youth fall leagues	\$17,000.00	14.89	\$2,595.00	
GENERAL	Ingram Library Services	Books for all collections in the Library	\$40,000.00	0.30	\$8,093.61	
GENERAL	Rivistas Subscription Services	Annual magazine subscriptions - 32 titles	\$40,000.00	0.30	\$818.38	
WATER	Casco	Replace worn and expired safety equipment	\$20,000.00	18.93	\$13,443.08	
WATER	Ace Hardware	Gravely Pro Turn 472 - mower for Hilltop	\$15,000.00	0.00	\$10,750.00	
WATER	Evoqua Water Technologies	Akta Klor - water treatment chemical	\$280,000.00	9.12	\$5,446.56	
WATER	Grainger	Infrared heater, 90,000 BTU	\$5,500.00	2.67	\$875.00	
AIRPORT	Fastenal	Self-drilling screws w/sealing washers for repairs to airport hangars	\$25,000.00	2.20	\$2,434.00	1
					\$321,416.38	
RATIFY - 11/19/19						
FUND	VENDORS	DESCRIPTION/BUDGET INFORMATION	BUDGETED	SPENT	AMOUNT	
GENERAL	NCTCOG	Annual membership dues - Emergency Preparedness	\$17,500.00	23.26	\$3,000.00	
GENERAL	Jack Powell Ford Mercury, Inc.	Brake job on PD unit #201	\$100,000.00	5.26	\$564.74	
GENERAL	Lee's Collision Center	Post accident repair to PD unit #206	\$100,000.00	5.26	\$1,383.58	2
GENERAL	Torq'd Diesel	Balance to remove/replace fuel tank on Quint 2	\$100,000.00	5.26	\$506.10	
AIRPORT	The Plumber	Tied into gas line for the hangar leased by Newcastle Mfg.	\$25,000.00	2.20	\$550.00	
					\$6,004.42	
					\$327,420.80	

FOOTNOTES

- 1 All screws stripped due to storm damage/insurance claim has been filed
- 2 Insurance claim

AGENDA ITEM COMMENTARY

ITEM TITLE

Consider and take appropriate action on Pay Application No. 3 to Peachtree Construction, Inc. in the amount of \$110,080.71 for the Holiday East Paving Project.

INITIATOR/STAFF INFORMATION SOURCE

Bob Neal, Director of Public Works

BACKGROUND

As part of the Bond Program, on May 7, 2019, City Council awarded the contract for Holiday East Paving Project to Peachtree Construction, Inc. in the amount of \$192,125.00. The contractor has submitted Pay Application No. 3 for consideration and payment. Schrickel, Rollins and Associates, Inc./Parkhill, Smith, and Cooper have reviewed the submitted pay application and recommend payment as presented. A summary of the contractor’s pay application is as follows:

Original Contract Amount	\$ 192,125.00
Amount of Work to Date	\$ 157,199.90
Less 10% Retainage	<\$ 15,719.99>
Previous Payments	<\$ 31,399.20>

TOTAL AMOUNT DUE THIS ESTIMATE \$ 110,080.71

The project in this portion of town is now complete with some additional cleanup to finish.

EXHIBITS

1. MW#ST1 SRA Recommendation Letter Pay App 3
2. MW#ST1 Peachtree Pay App 3

COUNCIL ACTION/RECOMMENDATION

Approve

MW#ST1

ITEM NUMBER 5.
MEETING DATE 11/19/2019

November 6, 2019

Mr. Bob Neal
Director of Public Works
City of Mineral Wells
P.O. Box 460
Mineral Wells, Texas 76068

RE: Paving Improvements-Holiday East

MW#ST1

Dear Mr. Neal:

Attached please find Pay Application No. 3 for the Paving Improvements – Holiday East for the Month of September. Payment for work during this time period included installing asphalt surface and traffic control. Based on general project observation and conversations with project representatives we recommend payment of \$110,080.71.00 to Peachtree Construction, LTD at this time.

Yours very truly,

SCHRICKEL, ROLLINS AND ASSOCIATES, INC.



Sanford P. LaHue, Jr., P.E.

SL/sl

attachments

CITY OF MINERAL WELLS
Paving Improvements - Holiday East

Peachtree Const., Inc.

Pay Est. 3

Item	Description	Qty	Unit	Unit Cost	Total	Previous Total Qty	Qty This Estimate	This Estimate Amounts	Total Qty To Date	Total Work To Date	Total Work To Date
Base Bid											
1	Mobilization/demobilization	2	LS	\$ 500.00	1,000.00	1.00		0.00	1	500.00	50.00%
2	Furnish and Install 2" Type D surface course asphalt pavement	15,000	SY	\$ 10.55	158,250.00		11558	121,936.90	11558	121,936.90	77.05%
3	Furnish, Install and Maintain Traffic Control Plan	1	LS	\$ 750.00	750.00		0.5	375.00	0.5	375.00	50.00%
Alternate Bid Items											
1	Furnish and Install 6" Concrete Curb & 24" Gutter	575	LF	\$ 39.00	22,425.00	832.00		0.00	832	32,448.00	144.70%
2	Furnish and Install Concrete Valley Gutter	100	SY	\$ 97.00	9,700.00	20.00		0.00	20	1,940.00	20.00%
TOTAL CONTRACT AMOUNT					\$192,125.00			\$122,311.90		\$157,199.90	81.82%

TOTAL AMOUNT BASE BID	192,125.00
Change Order(s)	
TOTAL CONTRACT AMOUNT	192,125.00
Work to Date	157,199.90
Materials On Hand	
10% Retainage	15,719.99
Previous Payments	31,399.20
Due This Estimate	110,080.71
Remaining Contract	50,645.09

This Estimate	\$122,311.90	\$157,199.90
10% Retainage	12,231.19	15,719.99
TOTALS	\$110,080.71	\$141,479.91

J. B. C.
 Contractor

Shel P. Kelly
 Engineer

Bobby Neal
 City Representative

AGENDA ITEM COMMENTARY

ITEM TITLE

Consider and take appropriate action on Pay Application No. 4 to Peachtree Construction, Inc. in the amount of \$115,730.10 for the Paving Improvements Project for Travis Dr. and SE 12th Street.

INITIATOR/STAFF INFORMATION SOURCE

Bob Neal, Director of Public Works

BACKGROUND

As part of the 2018 Bond Program, on June 4, 2019, City Council awarded the contract for Paving Improvements Project for Travis Dr. and SE 12th Street to Peachtree Construction, Inc. in the amount of \$662,754.75. The contractor has submitted Pay Application No. 4 for consideration and payment. Schrickel, Rollins and Associates, Inc./Parkhill, Smith, and Cooper have reviewed the submitted pay application and recommend payment as presented. A summary of the contractor’s pay application is as follows:

Original Contract Amount	\$ 662,754.75
Amount of Work to Date	\$ 521,788.86
Less 10% Retainage	<\$ 52,178.89>
Previous Payments	<\$ 353,879.87>
TOTAL AMOUNT DUE THIS ESTIMATE	\$ 115,730.10

As a brief update, SE 12th Street is complete except for cleanup and backfilling, and as of Monday November 11, Travis Drive is fully underway. Travis Drive is closed to through traffic for the time being.

EXHIBITS

1. MW#ST2 SRA Recommendation Letter Peachtree Pay App 4
2. MW#ST2 Peachtree Pay App 4

COUNCIL ACTION/RECOMMENDATION

Approve

MW#ST2

ITEM NUMBER 6.
MEETING DATE 11/19/2019

November 6, 2019

Mr. Bob Neal
Director of Public Works
City of Mineral Wells
P.O. Box 460
Mineral Wells, Texas 76068

RE: 2019 Paving Improvements
S.E. 12th Street and Travis Drive

MW#ST2

Dear Mr. Neal:

Attached please find Pay Application No. 4 for the 2019 Paving Improvements for the Month of October. Payment for work during this time period included installing asphalt surface, asphalt transition, demobilization and traffic control on S.E 12th Street. Based on general project observation and conversations with project representatives we recommend payment of \$115,730.10 to Peachtree Construction, LTD at this time.

Yours very truly,

SCHRICKEL, ROLLINS AND ASSOCIATES, INC.



Sanford P. LaHue, Jr., P.E.

SL/sl

attachments

CITY OF MINERAL WELLS

2019 Paving Improvements - SE 12th St./Travis Dr.

Peachtree Const., Inc.

Pay Est. 4

Item	Description	Qty	Unit	Unit Cost	Total	Previous Total Qty	Qty This Estimate	This Estimate Amounts	Total Qty To Date	Total Work To Date	Total Work To Date
Paving - SE 12th Street											
1	Mobilization/demobilization	1	LS	\$ 17,500.00	17,500.00	0.75	0.25	4,375.00	1	17,500.00	100.00%
2	Pulvermix existing roadway material (8" depth) including the addition of 20 lbs/SY of Type I Portland Cement, processing, compacting and furnish asphalt prime coat	10,700	SY	\$ 9.50	101,650.00	10,140.00		0.00	10140	96,330.00	94.77%
3	Furnish and Install 2" Type D fine graded binder surface course asphalt pavement	10,700	SY	\$ 11.25	120,375.00	-	10,140.00	114,075.00	10140	114,075.00	94.77%
4	Furnish and install Single Course Surface Treatment, including rock and asphalt	10,700	SY	\$ 3.80	40,660.00	10,140.00		0.00	10140	38,532.00	94.77%
5	Furnish and install concrete valley gutter, including reinforcing steel	75	SY	\$ 125.00	9,375.00	79.33		0.00	79.33	9,916.25	105.77%
5 (pg2)	Furnish and install concrete driveway approach	429	SY	\$ 90.00	38,610.00	648.89		0.00	648.89	58,400.10	151.26%
6	Furnish and install 6" concrete curb and 24" gutter	1,700	LF	\$ 40.00	68,000.00	2,252.00		0.00	2252	90,080.00	132.47%
7	Furnish and install 6" transition asphalt pavement	35	SY	\$ 44.00	1,540.00	-	193.50	8,514.00	193.5	8,514.00	552.86%
8	Adjust manhole ring and cover and install concrete surround	2	EA	\$ 600.00	1,200.00	-		0.00	0	0.00	0.00%
9	Install 5 ft. recessed curb inlet	3	EA	\$ 4,000.00	12,000.00	3.00		0.00	3	12,000.00	100.00%
10	Install 10 ft. recessed curb inlet	4	EA	\$ 5,800.00	23,200.00	1.52		0.00	1.522	8,827.60	38.05%
11	Remove and dispose of existing concrete driveway approach	471	SY	\$ 31.00	14,601.00	648.89		0.00	648.89	20,115.59	137.77%
12	Remove and dispose of existing concrete valley gutter	30	SF	\$ 5.50	165.00	79.33		0.00	79.33	436.32	264.43%
13	Remove and dispose of existing 6" concrete curb and gutter	1,700	LF	\$ 6.00	10,200.00	2,252.00		0.00	2252	13,512.00	132.47%
14	Remove existing curb inlet	7	EA	\$ 1,700.00	11,900.00	4.00		0.00	4	6,800.00	57.14%
15	Haul off excess pulvermixed roadway material	1,000	CY	\$ 12.50	12,500.00	980.00		0.00	980	12,250.00	98.00%
16	Furnish and install flexible base material for cement treatment	500	CY	\$ 35.00	17,500.00	-		0.00	0	0.00	0.00%
17	Furnish and install solid block grass sod	500	SY	\$ 13.00	6,500.00	-		0.00	0	0.00	0.00%
18	Prepare traffic control plan	1	LS	\$ 6,500.00	6,500.00	0.75	0.25	1,625.00	1	6,500.00	100.00%
19	Furnish, install, maintain and remove erosion control devices	1	LS	\$ 8,000.00	8,000.00	1.00		0.00	1	8,000.00	100.00%
Paving - Travis Dr.											
1	Mobilization/demobilization	1	LS	\$ 4,500.00	4,500.00			0.00	0	0.00	0.00%
2	Pulvermix existing roadway material (8" depth) including the addition of 20 lbs/SY of Type I Portland Cement, processing, compacting and furnish asphalt prime coat	3,625	SY	\$ 11.50	41,687.50			0.00	0	0.00	0.00%
3	Furnish and install 2" Type D fine graded binder surface course asphalt pavement	3,625	SY	\$ 11.75	42,593.75			0.00	0	0.00	0.00%

MW#ST2

CITY OF MINERAL WELLS

2019 Paving Improvements - SE 12th St./Travis Dr.

Peachtree Const., Inc.

Pay Est. 4

Item	Description	Qty	Unit	Unit Cost	Total	Previous Total Qty	Qty This Estimate	This Estimate Amounts	Total Qty To Date	Total Work To Date	Total Work To Date
4	Furnish and install Single Course Surface Treatment, including rock and asphalt	3,625	SY	\$ 4.50	16,312.50			0.00	0	0.00	0.00%
5	Furnish and install concrete driveway approach, including reinforcing steel	135	SY	\$ 90.00	12,150.00			0.00	0	0.00	0.00%
6	Furnish and install 6" transition asphalt pavement	50	SY	\$ 44.00	2,200.00			0.00	0	0.00	0.00%
7	Adjust existing water valve box and install concrete surround	1	EA	\$ 400.00	400.00			0.00	0	0.00	0.00%
8	Remove and dispose of existing concrete driveway approach	135	SY	\$ 31.00	4,185.00			0.00	0	0.00	0.00%
9	Haul off excess pulvermixed roadway material	500	CY	\$ 12.50	6,250.00			0.00	0	0.00	0.00%
10	Furnish and install flexible base material for cement treatment	100	CY	\$ 40.00	4,000.00			0.00	0	0.00	0.00%
11	Furnish and install solid block grass sodding	100	SY	\$ 13.00	1,300.00			0.00	0	0.00	0.00%
12	Prepare traffic control plan	1	LS	\$ 2,400.00	2,400.00			0.00	0	0.00	0.00%
13	Furnish, install, maintain and remove erosion control devices	1	LS	\$ 2,800.00	2,800.00			0.00	0	0.00	0.00%

TOTAL CONTRACT AMOUNT		\$662,754.75		\$128,589.00		\$521,788.86	78.73%
	This Estimate			\$128,589.00		\$521,788.86	
	10% Retainage			12,858.90		52,178.89	
	TOTALS			\$115,730.10		\$469,609.97	

TOTAL AMOUNT BASE BID 662,754.75
 Change Order(s) _____
 TOTAL CONTRACT AMOUNT 662,754.75
 Work to Date 521,788.86
 Materials On Hand _____
 10% Retainage 52,178.89
 Previous Payments 353,879.87
 Due This Estimate **115,730.10**
 Remaining Contract 193,144.78

Contractor

Engineer

City Representative

AGENDA ITEM COMMENTARY

ITEM TITLE

Consider and take appropriate action authorizing a Request for Proposals solicitation for a Master Lease Purchase Funding Agreement.

INITIATOR/STAFF INFORMATION SOURCE

John Moran, Director of Finance

BACKGROUND

As many of you are aware, during the current budget cycle we set aside funds to purchase, via a Master Lease Purchase Funding Agreement, to purchase vehicles and equipment for use by various city departments. These items were as follows:

- Four (4) Police Department Patrol Vehicles - \$225,000
- One (1) Street Sweeper - \$250,000
- One (1) Street Crack Sealing Machine - \$60,000
- One (1) Sewer Line Inspection Camera - \$70,000
- One (1) High – Pressure Sewer Jet Truck - \$227,500
- Two (2) Heavy – Duty Pickups - \$90,000
- Four (4) Light – Duty Pickups - \$110,000
- One (1) Supervisory Control and Data Acquisition (SCADA) Computer System/Software - \$100,000.

The RFP will be due from the respondents on December 17, 2019, and staff anticipates bringing a recommendation to the City Council at the January 7, 2020 meeting.

EXHIBITS

1. RFP Lease Purchase December 2019 Final

COUNCIL ACTION/RECOMMENDATION

Approve

ITEM NUMBER 7.
MEETING DATE 11/19/2019



CITY OF MINERAL WELLS, TEXAS

REQUEST FOR PROPOSAL

**VEHICLE, EQUIPMENT & COMPUTER EQUIPMENT/SOFTWARE
LEASE-PURCHASE FINANCING**

The City of Mineral Wells, Texas (“City”) requests proposals from qualified and eligible financial institutions to provide financing services for the acquisition of vehicles, equipment and software under a master lease agreement.

Subject to the terms, conditions, provisions, and the enclosed specifications, responses to this solicitation will be received at the following location until 2:00 p.m. C.S.T., Tuesday, December 17, 2019:

City of Mineral Wells
Attention: City Clerk
P.O. Box 460
115 S.W. 1st Street
Mineral Wells, TX 76067

After which, only the names of the respondents will be publicly announced. Any responses received after the scheduled due date and time will be rejected. Proposals must be submitted in a sealed package marked on the outside with the Proposer’s name, address, and the Project name.

This solicitation does not commit the City of Mineral Wells to award a contract, to pay any costs incurred in the preparation of proposals submitted, or to procure or contract for the services. The City reserves the right to accept or reject or cancel in part, or in its entirety offers received as a result of this request if deemed to be in the best interest of the City to do so.

PROJECT

The City of Mineral Wells, Texas is accepting proposals for Lease-Purchase Financing of vehicles, equipment and computer software. The proceeds will be used to cover the cost of the following vehicles, equipment and software:

- Four (4) Police Department Patrol Vehicles - \$225,000
- One (1) Street Sweeper - \$250,000
- One (1) Street Crack Sealing Machine - \$60,000
- One (1) Sewer Line Inspection Camera - \$70,000
- One (1) High – Pressure Sewer Jet Truck - \$227,500
- Two (2) Heavy – Duty Pickups - \$90,000
- Four (4) Light – Duty Pickups - \$110,000
- One (1) Supervisory Control and Data Acquisition (SCADA) Computer System/Software - \$100,000.

COST AND FINANCING

The current projection of the costs and financing of the project are shown below:

Municipal Vehicles	\$ 902,500
Equipment	130,000
Computer System/Software	<u>100,000</u>
	<u>\$ 1,132,500</u>

Actual costs will be determined at the time of purchase, and could vary from the projected cost. The lease principal will be for the entire actual cost of the vehicles, equipment, and software. Some vehicles, equipment, and/or software may be purchased before the lease financing is awarded, with the cost being reimbursed to the City when funding is available.

TAX EXEMPT LEASE PURCHASE

- a. **This issue shall be "Institution-Qualified"** for taxation purposes in calendar year 2020 (as described in Section 265(b) (3) (B) of the Internal Revenue Code of 2009, as amended).
- b. The City shall enter into a tax-exempt lease purchase agreement with the Institution in order to provide financing for this Project.
- c. **Type/Security:** The obligation of the City to pay lease rental payments shall be subject to annual appropriations by the Mineral Wells City Council.
- d. **Interest Rate:** The City desires **fixed rate financing** for these Project purchases. Please include the lease rate factor in addition to quoted interest rate.
- e. The proposal should include an indicative date for the fixed rate quote, and the period that the Institution will "hold" such rate. **The City anticipates full delivery of the Project before June 1, 2020.**

- f. The City further requests the Institution to indicate its willingness to provide to the City the benefit of a commensurate decrease in the offered rate should market interest rates drop during the stated commitment period.

TERMS AND CONDITIONS

The City of Mineral Wells is seeking a three (3) year lease on the Vehicles and Equipment in accordance with the *projected* schedule shown below:

Submit Proposed Terms and all Required Documents Deadline	December 17, 2019
Council Award Contract	January 7, 2020
Fund Escrow Account	January 17, 2020
First Semi-Annual Payment	August 31, 2020

- The payments are to be equal in amount and are to be charged on a semi-annual basis starting August 31, 2020, with subsequent billings on each February 28, until all payments are made on the Vehicles, Equipment and Computer Equipment/Software.
- The payment schedule is to be on the arrears basis, rather than on the advance basis.
- The City of Mineral Wells' obligation to make lease payments is subject to the annual availability of appropriations. Appropriations are included in the current budget, and the City of Mineral Wells will use its best efforts to obtain such appropriations in subsequent fiscal years.
- The lease agreement must include a standard non-appropriation of funds clause.
- The leased vehicles and equipment will become the property of the City of Mineral Wells at the end of the lease term upon making the final payment.
- The City of Mineral Wells will have the right to terminate the lease agreement by purchasing the leased equipment on any lease payment date by paying the principal balance and accrued interest.
- The City of Mineral Wells will be responsible for insuring the vehicles and equipment financed through this lease. No party will be named as "Additional Insured" on the insurance policy.

- The funding of the lease will be exactly the purchase price of the vehicles, appurtenances, and equipment. No over funding or under funding will be allowed.
- The total principal amount may be deposited into an escrow account, and the City of Mineral Wells will receive any and all interest earned on the escrow account.
- The lease may not be sold or transferred to a third party without the advance written permission of the City of Mineral Wells, which shall not be unreasonably withheld.
- No loan origination fee, documentation fee or any other fee will be allowed.
- The City will not pay escrow, investment or any other associated fees.
- The interest rate will be fixed for the entire life of the lease.
- The proposed interest rate will be firm for ninety (90) days following the opening of the proposals.
- **Pre-payment without Penalty:** The City wants a right of prepayment, upon reasonable notice to the Institution, without penalty for any loan received. *Please indicate, however, whether no right of prepayment (or, right of prepayment which vests after a fixed period of time), would yield a lower interest rate quote from the Institution for the desired term quotes described above.*
- All obligations, costs and responsibilities associated with ownership of the equipment shall be borne by the City whereby dispersing of such funds will be the sole responsibility of the City.
- Proposer is to provide the preferred method of closing on the Project. Indicate anticipated closing costs (if applicable) with closing method. Closing cost(s) will be considered in total financing cost calculations made by the City in award decision.
- Funds must be available no later than January 17, 2020, and the City of Mineral Wells intends to draw the entire principal amount no later than June 1, 2020.
- The institution making the successful proposal shall indemnify and hold harmless the City of Mineral Wells and its officers, agents and employees from any and all claims, demands, actions, causes of action, liabilities, damages, costs, expenses, and attorney fees, as and

when incurred by the City of Mineral Wells and all liability of any kind, descriptions, or character whatsoever or any other loss or detriment brought for or on account of any injuries or damages received or sustained by any person, persons, or property on account of any act or fault of the successful proposing institution or its agent, employee, subcontractor, or supplier in the execution of, or performance under, any contract which may result from the award. The institution making the successful proposal shall pay any judgment with cost which may be obtained against the City of Mineral Wells resulting from such injury. The City of Mineral Wells reserves the right to employ legal counsel of its choice.

- A written addendum will be provided to all parties for any changes made to this request for proposal. The City of Mineral Wells will not be bound by any oral representation, clarification or change.
- As part of the bidding package, the City will require bidders to complete the Texas Ethics Commission Form 1295, which must be filed online www.ethics.state.tx.us/File.
- The venue for any disputes shall be Palo Pinto County, Texas.
- Any portion of the proposal considered confidential, such as trade secrets or financial information, must be clearly identified. Proposals will be opened in a manner that avoids disclosure of the contents to competing bidders and keeps the proposals secret during negotiations. All proposals are open for public inspection after the contract is awarded, but trade secrets and confidential information in the proposals are not open for inspection. The City will honor the notations of trade secrets and confidential information and decline to release such information, initially, but please note that the final determination of whether a particular portion of a proposal is in fact a trade secret or commercial or financial information that may be withheld from the public inspection will be made by the Texas Attorney General or a court of competent jurisdiction. In the event a public information request is received for a portion of the proposal that is marked as being confidential information, the proposer will be notified of such request and will be required to justify their legal position in writing to the Texas Attorney General pursuant to Section 552.305 of the Government Code. In the event that it determined by opinion or order of the Texas Attorney General or a court of competent jurisdiction that such information is in fact not privileged and confidential under Section 552.110 of the Government Code and Section 252.049 of the Local Government Code, then such information will be available to the requester.
- In compliance with HB 89, bidders that submit a written response to this proposal acknowledge and affirm that it will abide by Chapter 2270 and that it does not nor will it

boycott Israel during the term of any contract with the City. In compliance with SB 252, by submitting a written response, the applicant acknowledges and agrees that the City of Mineral Wells, Texas will not enter in a contract with a company that does business with Iran, Sudan, or any known terrorist organization.

PROPOSAL REQUIREMENTS

- Interest rate shall be stated in terms of Annual Percentage Rate (APR).
- An amortization schedule based on estimated principal that includes separate columns for the total payment, principal, interest, and payoff amount.
- A statement showing the total financial obligations such as interest arising from this lease to the City of Mineral Wells throughout the life of the lease.
- The lease agreement and any other documentation the lessor requires in connection with this lease that do not conflict with the terms and conditions of this request for proposal.
- The most recent financial statements of the leasing institution, including an unqualified opinion from a certified public accountant.
- At least three (3) references from local governments that have used the institution for leases of similar terms.
- A copy of the attached summary sheet for the proposal dated and signed by an official who is authorized to make binding commitments for the institution.

INSTRUCTIONS FOR PREPARING THE PROPOSAL

- The proposal must be signed by an authorized officer or agent having the authority to bind the institution in a contract.
- Each proposal must be submitted in a sealed envelope bearing on the outside the name of the institution making the proposal and the phrase "Proposal to Finance Vehicles and Equipment Lease-Purchase."
- No facsimile or e-mail transmissions will be accepted.
- Any proposal(s) received after the date and time stated for opening will not be considered.

- The institution making the successful proposal is required to execute and deliver all necessary contracts and documents within ten (10) calendar days of receiving notice of the acceptance of their proposal.
- Any ambiguity in the proposal will be interpreted in the way most favorable to the city.
- No changes, additions or deletions will be allowed after submission of the proposal.
- A proposing institution may withdraw their sealed proposal prior to the scheduled opening time provided that the request to withdraw is submitted to the City of Mineral Wells Finance Department in writing and approved by the Director of Finance.

OPENING AND AWARD

Deadline for submission of a proposal is **2:00 p.m. C.S.T on Tuesday, December 17, 2019.**

Proposals submitted by mail or courier should be addressed to the following:

Peggy Clifton, City Clerk
 City of Mineral Wells
 P.O. Box 460
 115 SW 1st Street
 Mineral Wells, TX 76068

Proposal will be opened at the time stated above at the following address:

Council Chambers
 City of Mineral Wells City Hall Annex
 115 SW 1st Street
 Mineral Wells, TX 76067

Questions may be directed to John Moran, Director of Finance, (940) 328-7708 or financedir@mineralwellstx.gov. The City of Mineral Wells reserves the right to accept or reject any and/or all proposals.

The award will likely be included on the agenda of the City Council on January 7, 2020. The meeting will be held in the City Council Chambers in the City Hall Annex, 115 SW 1st Street, Mineral Wells, TX 76067.

The City anticipates awarding the financing to the qualified bidder offering not just the lowest cost of financing for the total Project, but to the bidder which provides the most advantageous terms of the lease thereby offering the best overall value to the City. Any and all Proposals may be rejected by the City. Should any proposal not conform to the terms and conditions in this proposal, the proposal shall be subject to rejection as non-responsive.

Any Proposal may be withdrawn by written request of the Proposer until the date and time established herein for opening of the Proposals. Any proposals not previously withdrawn, will, upon opening, constitute an irrevocable offer for 90 days (or until one or more of the Proposals have been duly accepted by the City, whichever is earlier) to provide the City the services solicited in this request for proposal.

Further, the City has the right to waive minor defects or variations from the exact requirements of the specifications in a proposal which do not affect the quality or schedule of the services being procured. If insufficient information is submitted in order properly to evaluate the proposal by a proposer, the City shall have the right to require such additional information as it may deem necessary after the proposal time and date, provided that the information requested does not change the quality or schedule of the services being procured.

**SUMMARY SHEET
CITY OF MINERAL WELLS, TEXAS**

PROPOSAL TO FINANCE: **FOUR (4) POLICE DEPARTMENT PATROL VEHICLES.**
 TWO (2) HEAVY DUTY TRUCKS.
 FOUR (4) LIGHT DUTY TRUCKS.

TERM: **36 MONTHS**

Proposed Interest Rate (APR), Bank Qualified: _____

Lease Rate Factor: _____

Total Interest Cost: _____

Payment Amount: _____

Total Payments over life of lease: _____

Separate amortization schedules are required.

Institution Submitting Proposal

Name of Institution: _____

Contact: _____

Address: _____

City, State, Zip: _____

Telephone Number: _____

Fax Number: _____

Email: _____

By signing this form, the undersigned represents that he/she has full authority to bind this institution to the terms contained in this proposal:

Name of authorized officer or agent: _____

Title: _____

Signature: _____

Date: _____

**SUMMARY SHEET
CITY OF MINERAL WELLS, TEXAS**

PROPOSAL TO FINANCE: **ONE (1) STREET CRACK SEALING MACHINE.
ONE (1) SEWER LINE INSPECTION CAMERA.**

TERM: 36 MONTHS

Proposed Interest Rate (APR), Bank Qualified: _____

Lease Rate Factor: _____

Total Interest Cost: _____

Payment Amount: _____

Total Payments over life of lease: _____

Separate amortization schedules are required.

Institution Submitting Proposal

Name of Institution: _____

Contact: _____

Address: _____

City, State, Zip: _____

Telephone Number: _____

Fax Number: _____

Email: _____

By signing this form, the undersigned represents that he/she has full authority to bind this institution to the terms contained in this proposal:

Name of authorized officer or agent: _____

Title: _____

Signature: _____

Date: _____

**SUMMARY SHEET
CITY OF MINERAL WELLS, TEXAS**

PROPOSAL TO FINANCE: ONE (1) SUPERVISORY CONTROL AND DATA ACQUISITION COMPUTER/SOFTWARE SYSTEM, AKA SCADA.

TERM: 60 MONTHS

Proposed Interest Rate (APR), Bank Qualified: _____

Lease Rate Factor: _____

Total Interest Cost: _____

Payment Amount: _____

Total Payments over life of lease: _____

Separate amortization schedules are required.

Institution Submitting Proposal

Name of Institution: _____

Contact: _____

Address: _____

City, State, Zip: _____

Telephone Number: _____

Fax Number: _____

Email: _____

By signing this form, the undersigned represents that he/she has full authority to bind this institution to the terms contained in this proposal:

Name of authorized officer or agent: _____

Title: _____

Signature: _____

Date: _____

**SUMMARY SHEET
CITY OF MINERAL WELLS, TEXAS**

PROPOSAL TO FINANCE: **ONE (1) HIGH PRESSURE SEWER JET TRUCK
ONE (1) STREET SWEEPER**

TERM: **72 MONTHS**

Proposed Interest Rate (APR), Bank Qualified: _____

Lease Rate Factor: _____

Total Interest Cost: _____

Payment Amount: _____

Total Payments over life of lease: _____

Separate amortization schedules are required.

Institution Submitting Proposal

Name of Institution: _____

Contact: _____

Address: _____

City, State, Zip: _____

Telephone Number: _____

Fax Number: _____

Email: _____

By signing this form, the undersigned represents that he/she has full authority to bind this institution to the terms contained in this proposal:

Name of authorized officer or agent: _____

Title: _____

Signature: _____

Date: _____

AGENDA ITEM COMMENTARY

ITEM TITLE

Conduct a Public Hearing, and consider and take appropriate action on an Ordinance for the closure of a portion of NW 1st Avenue between NW 3rd Street and NW 4th Street.

INITIATOR/STAFF INFORMATION SOURCE

Randy Criswell, City Manager

BACKGROUND

The Planning and Zoning Commission met on November 4, 2019 to consider a request from applicant Randy Nix, representing Crazy Water Hotel PBC, Inc., to close a portion of Northwest 1st Avenue, between Northwest 3rd Street and Northwest 4th Street which is the block directly west of the Crazy Water Hotel. The initial purpose of the request was due to the need for replacement of the power transformers that have served the hotel. The transformers are currently mounted on poles, and are very close to the building. Oncor has proposed replacing them with pad-mounted transformers, which would also allow for the power to be buried instead of overhead.

The size of the transformers is significant, and won't fit in the space between the hotel and the back of the curb. Staff and the P&Z felt it was appropriate to close the street to allow for the placement of the transformers. At this time I believe this is the most appropriate action.

The Planning and Zoning Commission voted unanimously to approve the request and to recommend approval to the City Council. An Ordinance has been prepared.

It is staff's recommendation that the Council accept the recommendation from the Planning and Zoning Commission and adopt the Ordinance.

EXHIBITS

1. P&Z Commission 11-4
2. ORDINANCE to close 300 block of NW 1st Ave Nov 2019 (2)

COUNCIL ACTION/RECOMMENDATION

Approve

ITEM NUMBER 8.
MEETING DATE 11/19/2019



Minutes

PLANNING AND ZONING COMMISSION MEETING
Monday, November 4, 2019 – 5:30 p.m.
City Hall Annex, 115 S.W. 1st Street, Mineral Wells, Texas

Note: The order of the meeting is subject to change per the Commission's discretion.

MEMBERS PRESENT: Richard Ball, Mark Berry, Gene Ender, Glenn Mitchell, Charles Ramsey, Jeff Cowen, Carlos Ma

STAFF MEMBERS PRESENT: Randy Criswell- City Manager, Rob Turk Building Official, Misty Harkins -Secretary

CALL TO ORDER: The meeting was called to order at 5:36 p.m. by Richard Ball.

Mr. Ramsey made a MOTION to approve the minutes of the Aug 22, 2019, Planning and Zoning Commission meeting, **SECONDED** by Mr. Ender MOTION **CARRIED** 5 Yea, 0 Nay.

PUBLIC HEARING

PUBLIC HEARING ON P & Z CASE 2019-16: **Address:** Applicant, Randy Nix, representing Crazy Water Hotel PBC, Inc., is petitioning the City of Mineral Wells for the closure of a portion of Northwest 1st Avenue, between Northwest 3rd Street and Northwest 4th Street, City of Mineral Wells, Palo Pinto County, Texas.

A public hearing opened at 5:38 p.m. Randy Nix & Tim Hopkins were present for the meeting. Mr. Hopkins addressed the board members stating he has spoke with Mr. Pool the Fire Chief stating the fire lanes will still be maintained. The public hearing was closed at 5:39 p.m. Mr. Criswell read aloud the cities recommendation for approval. Mr. Ender asked once the street closure was in affect was the city responsible to still maintain that road? Mr. Criswell stated we are leaving our options open at this time for this street because later on if we need to open it back up we can. Mr. Criswell stated there will be pad mounted transformers that will be

placed in the closure, the utilities are already on that side of the building so it makes sense to place the transformers there as well.

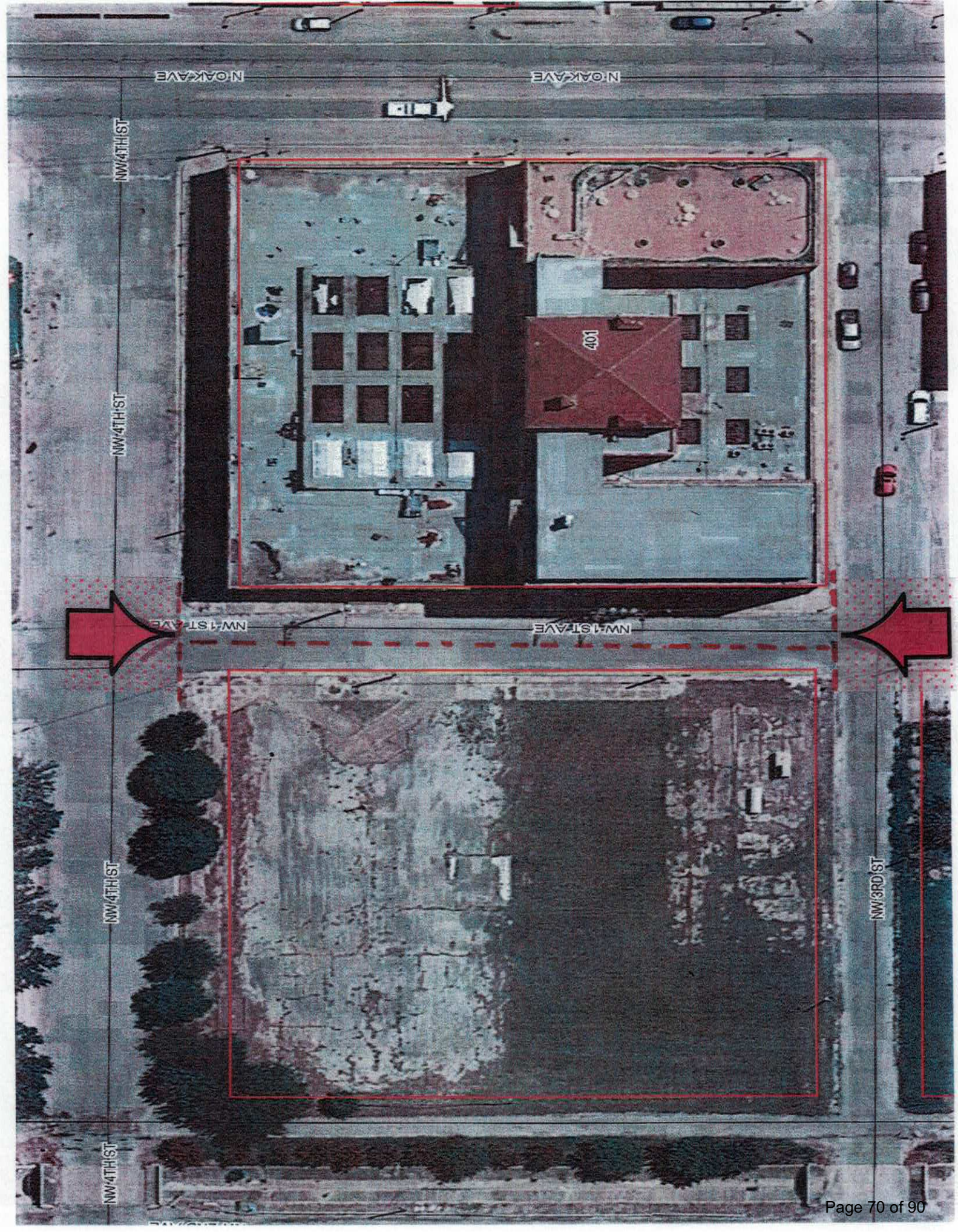
Mr. Ender made a MOTION to approve the street closure. SECONDED by Mr. Berry. The MOTION CARRIED with 5 in favor and 0 opposed.

ADJOURNMENT: There was no further business to discuss. Mr. Berry made a MOTION to adjourn, SECONDED by Mr. Ender. MOTION CARRIED 5 Yeas, 0 Nays, at 5:48 p.m.

Minutes approved on: _____

Richard Ball, Chairman

Misty Harkins, Secretary



N OAK AVE

N OAK AVE

NW 4TH ST

NW 4TH ST

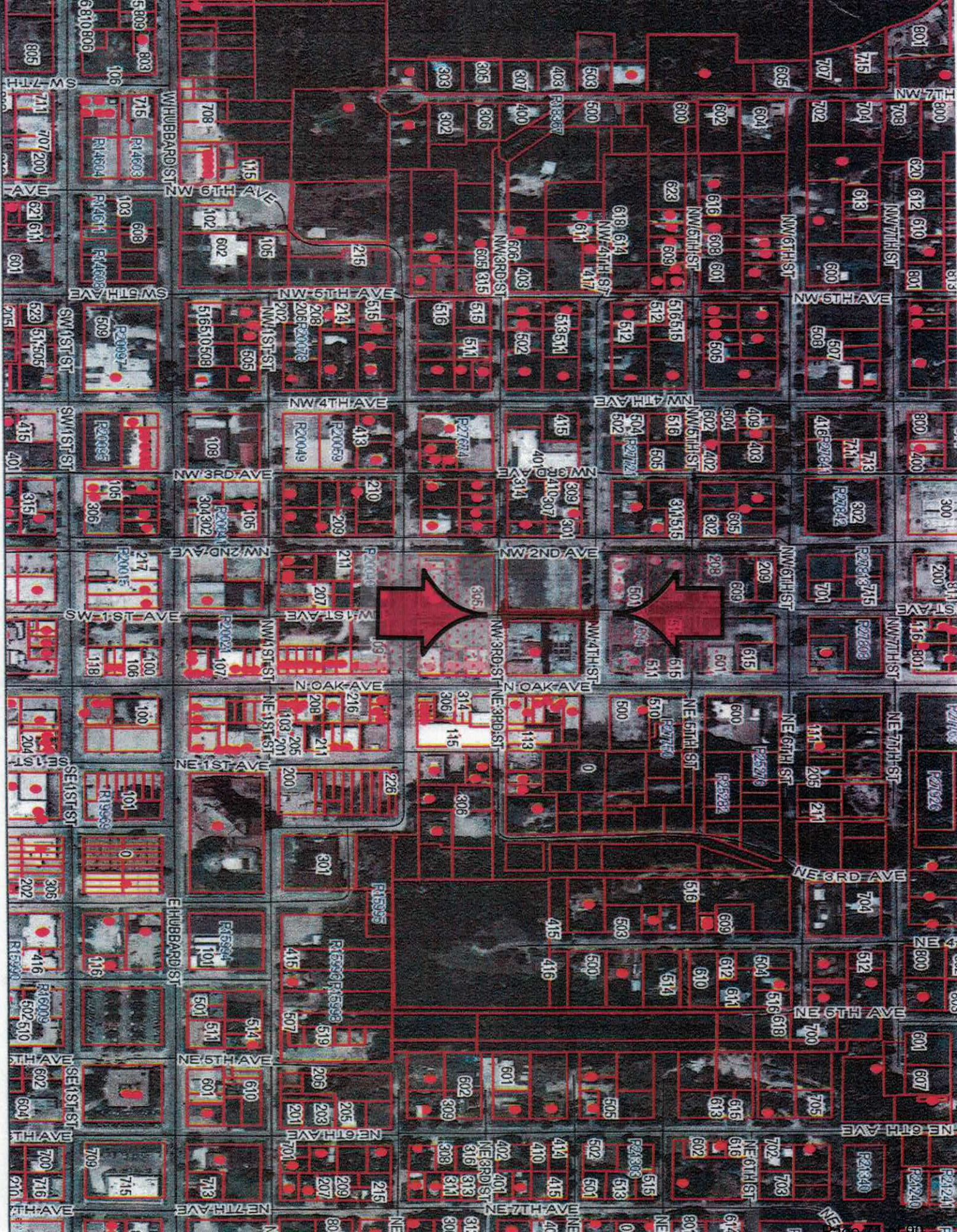
NW 1ST AVE

NW 1ST AVE

NW 4TH ST

NW 3RD ST

NW 4TH ST



ORDINANCE NO. _____

AN ORDINANCE OF THE CITY OF MINERAL WELLS, TEXAS, CLOSING TO PUBLIC TRAVEL A PORTION OF N.W. 1ST. AVENUE BETWEEN N.W. 3RD STREET AND N.W. 4TH STREET IN THE WIGGINS ADDITION TO THE CITY OF MINERAL WELLS, PALO PINTO COUNTY TEXAS, PROVIDING THIS ORDINANCE BE CUMULATIVE; PROVIDING FOR SAVINGS SEVERABILITY, GOVERNMENTAL IMMUNITY, INJUNCTIONS, AND AN EFFECTIVE DATE.

WHEREAS, the plat of the Wiggins Addition to the City of Mineral Wells, Palo Pinto County, Texas shows a street known as N.W. 1St. Avenue, a portion of which lies between N.W. 3rd Street and N.W. 4th Street of said addition; and

WHEREAS, Crazy Water Hotel PBC, Inc., as the sole owner of the property abutting said portion of N.W. 1st Avenue, has filed a petition requesting that said portion of N.W. 1st Avenue be closed to public travel; and

WHEREAS, the Planning and Zoning Commission, after due and proper notice, held a Public Hearing and following such Public Hearing forwarded its recommendation to the Mineral Wells City Council that said portion of N.W. 1st Avenue be closed to public travel; and

WHEREAS, the Mineral Wells City Council, following a Public Hearing, has considered the petition of Crazy Water Hotel PBC, Inc. and finds that due to the proposed use of the property adjoining such portion of N.W. 1st Avenue, that the closure of said portion of N.W. 1st Avenue would be in the best interest of the general public;

NOW, THEREFORE, BE IT ORDAINED BY THE CITY COUNCIL OF THE CITY OF MINERAL WELLS, TEXAS that the portion of N.W. 1st Avenue which runs between N.W. 3rd Street and N.W. 4th Street in the Wiggins Addition to the City of Mineral Wells be, and is hereby closed to public travel.

BE IT FURTHER ORDAINED BY THE CITY COUNCIL OF THE CITY OF MINERAL WELLS, TEXAS as follows:

- (1) That all easements and rights-of-way for the benefit of the public and all utilities are preserved in full force and effect.
- (2) That Crazy Water Hotel PBC, Inc. be and is hereby authorized to construct barriers on each end of the closed portion of N.W. 1st Avenue provided the City and all utility companies shall have the right of entry at all times for purposes of constructing, maintaining, installing, repairing or replacing utilities within such closed portion of N.W. 1st Avenue.
- (3) That Crazy Water Hotel PBC, Inc. shall not construct any building or other permanent improvements on any part of the closed portion of N.W. 1st Avenue without written consent from the City Manager of Mineral Wells.

PASSED AND APPROVED BY THE MINERAL WELLS CITY COUNCIL in a public meeting held November 19, 2019.

ATTEST.:

CITY OF MINERAL WELLS, TEXAS

Peggy Clifton, City Clerk

By: _____
Christopher M. Perricone, Mayor

AGENDA ITEM COMMENTARY

ITEM TITLE

Consider and take appropriate action on a resolution casting votes for the Parker County Appraisal District Board of Directors for 2020-2021.

INITIATOR/STAFF INFORMATION SOURCE

Randy Criswell, City Manager

BACKGROUND

On October 15, you adopted a resolution to nominate candidates for the Parker County Appraisal District Board of Directors. We have received the official notice that December 15 is the deadline to submit our votes. In accordance with the attached, **you have 10 votes and can vote for up to five candidates.** You may cast your votes in any way you prefer. If you recall, **the nominations you approved were for the following candidates:**

Gary Aguillard
Richard Barret
Jerry Durant
John Hinton
Cody Lane

A resolution has been prepared for this purpose.

EXHIBITS

1. Parker County Appraisal District Ballot Info 2020-2021
2. Parker County Appraisal District Ballot Resolution 2020-2021

COUNCIL ACTION/RECOMMENDATION

Approve

ITEM NUMBER 9.
MEETING DATE 11/19/2019

PARKER COUNTY APPRAISAL DISTRICT

1108 Santa Fe Drive

Weatherford, Texas 7608

TELEPHONE: 817-596-0077

FAX: 817-613-8096

October 29, 2019

TO: Taxing Unit Administrators
SUBJECT: Selection of Appraisal District Directors for 2020-2021

Nominations for the Parker County Appraisal District Directors has been completed and closed. All nominations have been submitted by written resolution and the nominee's names are included on the enclosed ballot.

The next step in the selection process is for voting units to cast their votes for the nominees. Section 6.03 (k) of the Texas Property Tax Code requires each voting tax unit to vote in an open meeting, record its vote by written resolution, and submit the resolution to the Chief Appraiser by **December 15, 2019**. A taxing unit may cast its votes for one candidate or distribute the votes among any number of candidates.

A voting tax unit may only cast votes for persons nominated and named on the ballot. There is no provision for write-in candidates. The Chief Appraiser may not count votes cast for a name not listed on the official ballot. The five candidates receiving the highest number of votes will be declared the winners.

Enclosed is the official ballot, the number of votes allocated to each taxing unit, and a sample resolution for recording the votes.

Please add this important action to your first available board meeting agenda, keeping in mind the December 15th deadline for casting votes.

Sincerely,



Larry Hammonds
Chief Appraiser
Parker County Appraisal District

SELECTION OF APPRAISAL DISTRICT DIRECTORS
PARKER COUNTY APPRAISAL DISTRICT
2020-2021

OFICIAL BALLOT

CANDIDATES

GARY AGUILLARD

RICHARD BARRET

JERRY DURANT

STEVE HARRIS

JOHN HINTON

CODY LANE

STERLING NARON

PARKER COUNTY APPRAISAL DISTRICT
BOARD OF DIRECTORS ELECTION 2020-2021

VOTING ENTITLEMENT

VOTING ENTITY	NUMBER OF VOTES
ALEDO ISD	1005
AZLE ISD	300
BROCK ISD	210
GARNER ISD	40
GRANBURY ISD	25
LIPAN ISD	5
MILLSAP ISD	115
MIN WELLS ISD	5
PEASTER ISD	100
PERRIN-WHITT	10
POOLVILLE ISD	35
SPRINGTOWN ISD	260
WEATHERFORD ISD	1245
CITY ALEDO	30
CITY AZLE	25
CITY FORT WORTH	15
CITY MIN WELLS	10
CITY RENO	10
CITY SPRINGTOWN	20
CITY WEATHERFORD	245
CITY WILLOW PARK	50
COLLEGE	290
PARKER COUNTY	<u>950</u>
	5000

STATE OF TEXAS §

§ RESOLUTION

COUNTY OF PALO PINTO §

BE IT RESOLVED that the City of Mineral Wells City Council casts its votes for the members of the Board of Directors of the Parker County Appraisal District for 2020-2021 as follows:

CANDIDATE	VOTES CAST
Gary Aguillard	_____
Richard Barret	_____
Jerry Durant	_____
Steve Harris	_____
John Hinton	_____
Cody Lane	_____
Sterling Naron	_____

This resolution was moved, seconded, and adopted by a majority vote at a meeting of the Mineral Wells City Council held on this 19th day of November, 2019.

Christopher M. Perricone, Mayor

ATTEST:

Peggy Clifton, City Clerk

AGENDA ITEM COMMENTARY

ITEM TITLE

Consider and take appropriate action on a resolution casting votes for the Palo Pinto County Appraisal District Board of Directors for 2020-2021.

INITIATOR/STAFF INFORMATION SOURCE

Randy Criswell, City Manager

BACKGROUND

On October 15, you adopted a resolution to nominate candidates for the Palo Pinto County Appraisal District Board of Directors. We have received the official notice that December 15 is the deadline to submit our votes. In accordance with the attached, **you have 403 votes and can vote for up to five candidates.** You may cast your votes in any way you prefer. If you recall, **the nominations you approved were for the following candidates:**

Bill Arneson
Marsha Bettis
David Cherry
Judy Morrow
Clint Myrick

EXHIBITS

1. Palo Pinto County Appraisal District Ballot Info 2020-2021
2. Palo Pinto County Appraisal District Ballot Resolution 2020-2021

COUNCIL ACTION/RECOMMENDATION

Adopt

ITEM NUMBER 10.
MEETING DATE 11/19/2019

PALO PINTO APPRAISAL DISTRICT
P O Box 250 / 200 Church Ave
Palo Pinto, TX 76484
940-659-1281 Fax 940-659-2618

BALLOT
BOARD OF DIRECTORS
2021- 2020

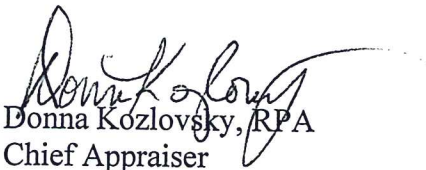
The following have been nominated by the taxing jurisdictions in Palo Pinto Appraisal District.

<u>NAME</u>	<u>VOTES</u>
Bill Arneson	_____
Marsha Bettis	_____
David Cherry	_____
Judy Morrow	_____
Clint Myrick	_____

The governing body of each taxing unit entitled to vote shall determine its vote by resolution and submit to the chief appraiser before DECEMBER 15, 2019.

Please refer to the attached chart for information of the number of votes that your jurisdiction is entitled. Votes may be cast for one candidate or divided among candidates. You may fax or mail your resolution before **December 15, 2019**.

If you have any questions please feel free to contact me at 940-659-1697.


Donna Kozlovsky, RPA
Chief Appraiser
Palo Pinto Appraisal District

VOTE ALLOCATION FOR PPAD BOARD OF DIRECTORS 2020-2021

BASED ON 2018 LEVY

TAX UNIT		LEVY %	#VOTES
PALO PINTO COUNTY	\$ 11,740,114.00	0.235923	1180
GORDON CITY	\$ 75,234.49	0.0015119	8
GRAFORD CITY	\$ 25,261.02	0.000508	3
MW CITY	\$ 4,011,584.46	0.0806145	403
MINGUS CITY	\$ 26,237.36	0.000527	3
STRAWN CITY	\$ 67,360.60	0.0013536	7
GORDON ISD	\$ 1,556,640.11	0.031281	156
GRAFORD ISD	\$ 10,835,373.71	0.2177414	1089
MW ISD	\$ 11,262,742.39	0.2263296	1132
PALO PINTO ISD	\$ 5,848,627.79	0.1175307	588
SANTO ISD	\$ 3,069,506.05	0.061683	308
STRAWN ISD	\$ 615,770.85	0.012374	62
LIPAN ISD	\$ 338,373.55	0.0067998	34
MILLSAP ISD	\$ 78,280.67	0.001573	8
PERRIN/WHITT Cisd	\$ 211,463.47	0.0042494	21
	\$ 49,762,570.52	1.000000	5000

NOTE: FIVE CANDIDATES WITH LARGEST CUMULATIVE VOTE ARE ELECTED.

STATE OF TEXAS §

§ RESOLUTION

COUNTY OF PALO PINTO §

BE IT RESOLVED that the City of Mineral Wells City Council casts its votes for the members of the Board of Directors of the Palo Pinto Appraisal District for 2020-2021 as follows:

CANDIDATE	VOTES CAST
Bill Arneson	_____
Marsha Bettis	_____
David Cherry	_____
Judy Morrow	_____
Clint Myrick	_____

This resolution was moved, seconded, and adopted by a majority vote at a meeting of the Mineral Wells City Council held on this 19th day of November, 2019.

Christopher M. Perricone, Mayor

ATTEST:

Peggy Clifton, City Clerk

AGENDA ITEM COMMENTARY

ITEM TITLE

Consider and take appropriate action on requests to purchase lots owned by the City of Mineral Wells in the Springhill Addition.

INITIATOR/STAFF INFORMATION SOURCE

Randy Criswell, City Manager

BACKGROUND

I've been approached by two Builders interested in purchasing the last three lots in the Springhill Addition that are currently owned by the City. In 2016 the City sold two lots, but we still own lots 15, 23, and 33. In light of the lack of available lots in Mineral Wells (unless there's some reason I'm unaware of), I recommend we sell these lots for new home construction.

In the solicitations from 2016, the lots were listed with a minimum price of \$14,700/lot but they're currently on the tax roll with a \$16,000 value. We need to establish a minimum bid for the three lots, sell them as "all or none", and consider requiring the successful bidder to provide us with a guaranteed schedule for completion of three new homes. I say this because since the lots are owned by the city, it would be inappropriate to sell them to someone for speculative purposes.

EXHIBITS

1. Springhill Addition Tax Appraisal Info Lots 15 23 33

COUNCIL ACTION/RECOMMENDATION

Consider
Approve

ITEM NUMBER 11.
MEETING DATE 11/19/2019

PROTEST DEADLINE MAY 15, 2019

Information Updated 11/12/2019

Property Year 2019 [Map/Gis](#)
 Property ID: R000034534 Geo ID: 221051070

[< Previous Property](#) **84 / 94** [Next Property >](#)

Property Details

Ownership

Available Actions

CITY OF MINERAL WELLS
 PO BOX 460
 MINERAL WELLS, TX 76067
 Ownership Interest: 1.0000000

Qualified Exemptions

Const Exempt

* For property owner confidentiality reasons not all exemption details are available online.

Legal Information

Legal: Acres: 0.204, SPRINGHILL ADDITION LOT 15 G#S0000-00-00000-015-00-0

Situs: Not Applicable

Property Valuation History

Values by Year		2019	2018	2017	2016	2015	n/a
Improvements	+	\$0	\$0	\$0	\$0	\$0	\$0
Land	+	\$16,000	\$14,000	\$14,000	\$10,000	\$10,000	\$0
Production Market	+	\$0	\$0	\$0	\$0	\$0	\$0
Personal	+	\$0	\$0	\$0	\$0	\$0	\$0
Mineral	+	\$0	\$0	\$0	\$0	\$0	\$0
Total Market	=	\$16,000	\$14,000	\$14,000	\$10,000	\$10,000	\$0
Agricultural Loss	-	\$0	\$0	\$0	\$0	\$0	\$0
Homestead Cap Loss	-	\$0	\$0	\$0	\$0	\$0	\$0
Total Assessed	=	\$16,000	\$14,000	\$14,000	\$10,000	\$10,000	\$0

Improvement / Buildings Improvement Value: \$0

Group Sequence	Code	Building Description	Year Built	Square Footage	Perimeter Footage
----------------	------	----------------------	------------	----------------	-------------------

Land Details Market Value: \$16,000 Production Market Value: \$0 Production Value: \$0

Land Code	Acres	Sq. Ft.	Front Ft.	Rear Ft.	Depth	Mkt. Value	Prd. Value
SPRINGH	0.204	8,886	0	0		16,000	0

Deed History

Sold By	Volume	Page	Deed Date	Instrument
---------	--------	------	-----------	------------

Property Tax Estimation by Entity / Jurisdiction

Code	Description	Taxable Value	Tax Rate per \$100	Tax Factor applied to Taxable Value	Estimated Tax
182	PALO PINTO COUNTY	0	\$0.42	0.0042	\$0.00
ESD1	EMERGENCY SERVICE DISTRICT 1	0	\$0.03	0.0003	\$0.00
HPD	PALO PINTO HOSPITAL	0	\$0.3748	0.003748	\$0.00
MWC	MINERAL WELLS CITY	0	\$0.6912	0.006912	\$0.00
MWI	MINERAL WELLS ISD	0	\$1.3987	0.013987	\$0.00
Total Estimation			\$2.9147	0.029147	\$0.00

The above property tax estimation is not a tax bill. Do not pay.

Southwest Data Solutions provides this information "as is" without warranty of any kind.
 Southwest Data Solutions is not responsible for any errors or omissions.

PROTEST DEADLINE MAY 15, 2019

Property Year 2019

[Map/Gis](#)

Information Updated 11/12/2019

Property ID: R000034542 Geo ID: 221051110

[< Previous Property](#)
85 / 94
[Next Property >](#)

Property Details

Ownership

Available Actions

CITY OF MINERAL WELLS
 PO BOX 460
 MINERAL WELLS, TX 76067
 Ownership Interest: 1.0000000

Qualified Exemptions

Const Exempt

* For property owner confidentiality reasons not all exemption details are available online.

Legal Information

Legal: Acres: 0.333, SPRINGHILL ADDITION LOT 23 G#S0000-00-00000-023-00-0

Situs: Not Applicable

Property Valuation History

Values by Year		2019	2018	2017	2016	2015	n/a
Improvements	+	\$0	\$0	\$0	\$0	\$0	\$0
Land	+	\$16,000	\$14,000	\$14,000	\$10,000	\$10,000	\$0
Production Market	+	\$0	\$0	\$0	\$0	\$0	\$0
Personal	+	\$0	\$0	\$0	\$0	\$0	\$0
Mineral	+	\$0	\$0	\$0	\$0	\$0	\$0
Total Market	=	\$16,000	\$14,000	\$14,000	\$10,000	\$10,000	\$0
Agricultural Loss	-	\$0	\$0	\$0	\$0	\$0	\$0
Homestead Cap Loss	-	\$0	\$0	\$0	\$0	\$0	\$0
Total Assessed	=	\$16,000	\$14,000	\$14,000	\$10,000	\$10,000	\$0

Improvement / Buildings Improvement Value: \$0

Group Sequence	Code	Building Description	Year Built	Square Footage	Perimeter Footage
----------------	------	----------------------	------------	----------------	-------------------

Land Details Market Value: \$16,000 Production Market Value: \$0 Production Value: \$0

Land Code	Acres	Sq. Ft.	Front Ft.	Rear Ft.	Depth	Mkt. Value	Prd. Value
SPRINGH	0.333	14,505	0	0		16,000	0

Deed History

Sold By	Volume	Page	Deed Date Instrument
---------	--------	------	----------------------

Property Tax Estimation by Entity / Jurisdiction

Code	Description	Taxable Value	Tax Rate per \$100	Tax Factor applied to Taxable Value	Estimated Tax
182	PALO PINTO COUNTY	0	\$0.42	0.0042	\$0.00
ESD1	EMERGENCY SERVICE DISTRICT 1	0	\$0.03	0.0003	\$0.00
HPD	PALO PINTO HOSPITAL	0	\$0.3748	0.003748	\$0.00
MWC	MINERAL WELLS CITY	0	\$0.6912	0.006912	\$0.00
MWI	MINERAL WELLS ISD	0	\$1.3987	0.013987	\$0.00
Total Estimation			\$2.9147	0.029147	\$0.00

The above property tax estimation is not a tax bill. Do not pay.

Southwest Data Solutions provides this information "as is" without warranty of any kind.
 Southwest Data Solutions is not responsible for any errors or omissions.

PROTEST DEADLINE MAY 15, 2019

Property Year 2019 [Map/Gis](#)

Information Updated 11/12/2019

Property ID: R000034552 Geo ID: 221051160

[< Previous Property](#)
86 / 94
[Next Property >](#)

Property Details

Ownership

Available Actions

CITY OF MINERAL WELLS
 PO BOX 460
 MINERAL WELLS, TX 76067
 Ownership Interest: 1.0000000

Qualified Exemptions

Const Exempt

* For property owner confidentiality reasons not all exemption details are available online.

Legal Information

Legal: Acres: 0.335, SPRINGHILL ADDITION LOT 33 G#S0000-00-00000-033-00-0

Situs: Not Applicable

Property Valuation History

Values by Year		2019	2018	2017	2016	2015	n/a
Improvements	+	\$0	\$0	\$0	\$0	\$0	\$0
Land	+	\$16,000	\$14,000	\$14,000	\$10,000	\$10,000	\$0
Production Market	+	\$0	\$0	\$0	\$0	\$0	\$0
Personal	+	\$0	\$0	\$0	\$0	\$0	\$0
Mineral	+	\$0	\$0	\$0	\$0	\$0	\$0
Total Market	=	\$16,000	\$14,000	\$14,000	\$10,000	\$10,000	\$0
Agricultural Loss	-	\$0	\$0	\$0	\$0	\$0	\$0
Homestead Cap Loss	-	\$0	\$0	\$0	\$0	\$0	\$0
Total Assessed	=	\$16,000	\$14,000	\$14,000	\$10,000	\$10,000	\$0

Improvement / Buildings *Improvement Value: \$0*

Group Sequence	Code	Building Description	Year Built	Square Footage	Perimeter Footage
----------------	------	----------------------	------------	----------------	-------------------

Land Details *Market Value: \$16,000* *Production Market Value: \$0* *Production Value: \$0*

Land Code	Acres	Sq. Ft.	Front Ft.	Rear Ft.	Depth	Mkt. Value	Prd. Value
SPRINGH	0.335	14,592	0	0		16,000	0

Deed History

Sold By	Volume	Page	Deed Date	Instrument
---------	--------	------	-----------	------------

Property Tax Estimation by Entity / Jurisdiction

Code	Description	Taxable Value	Tax Rate per \$100	Tax Factor applied to Taxable Value	Estimated Tax
182	PALO PINTO COUNTY	0	\$0.42	0.0042	\$0.00
ESD1	EMERGENCY SERVICE DISTRICT 1	0	\$0.03	0.0003	\$0.00
HPD	PALO PINTO HOSPITAL	0	\$0.3748	0.003748	\$0.00
MWC	MINERAL WELLS CITY	0	\$0.6912	0.006912	\$0.00
MWI	MINERAL WELLS ISD	0	\$1.3987	0.013987	\$0.00
Total Estimation			\$2.9147	0.029147	\$0.00

The above property tax estimation is not a tax bill. Do not pay.

Southwest Data Solutions provides this information "as is" without warranty of any kind.
 Southwest Data Solutions is not responsible for any errors or omissions.

AGENDA ITEM COMMENTARY

ITEM TITLE

§551.071(1): Consultation with Attorney regarding pending litigation – Cause No. CV19-1776 – Christopher Michael Perricone vs. The City of Mineral Wells, Texas.

INITIATOR/STAFF INFORMATION SOURCE

BACKGROUND

EXHIBITS

COUNCIL ACTION/RECOMMENDATION

ITEM NUMBER 13.a.
MEETING DATE 11/19/2019