

City Hall Entrance Modifications

Kelly Holecek – Director of General Services

Dustin Riley – Facilities Project Manager

November 29, 2017



City Hall Entrance Modifications

Needs:

- ADA entrance that is accessible from the large parking lot on the Franklin Avenue side of City Hall.
- Ability to have a single security check point for City Hall.



City Hall Entrance Modifications

Solution Options:

- Austin Avenue - front of City Hall.
- Franklin Avenue - side of City Hall



City Hall – Existing Entrance

Austin Avenue – Front of City Hall



City Hall – New Entrance (option A) Austin Avenue – Front of City Hall



Option A

Facing East



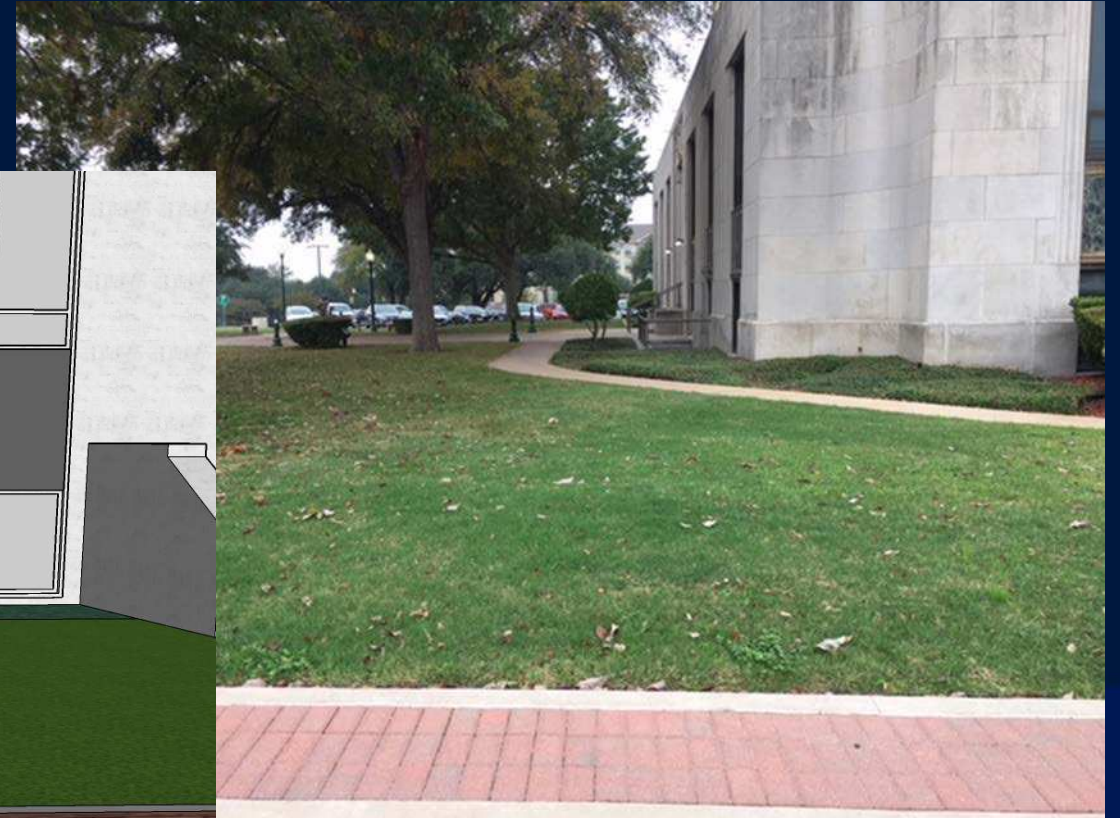
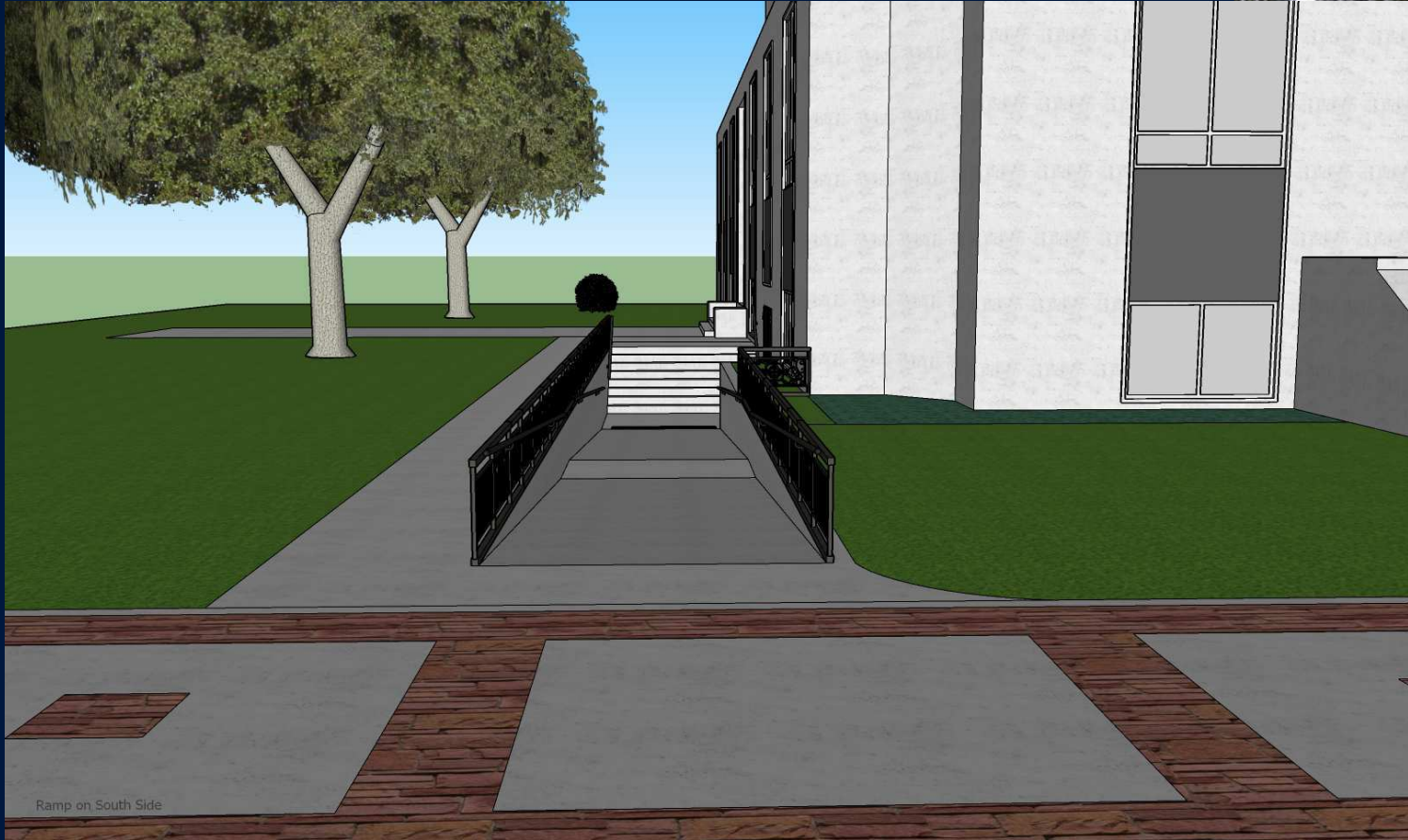
Option A

Facing North



Option A

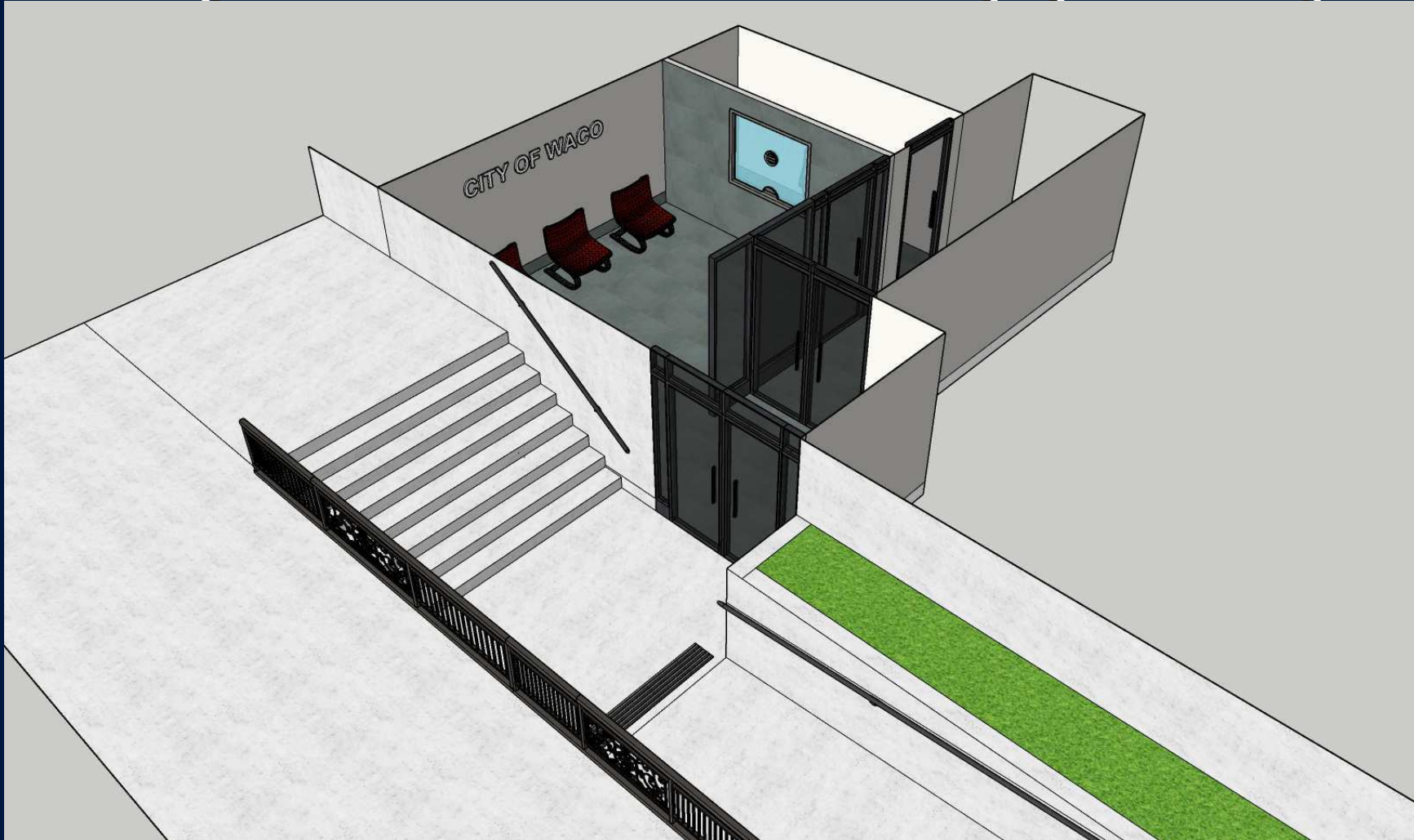
Facing Northwest



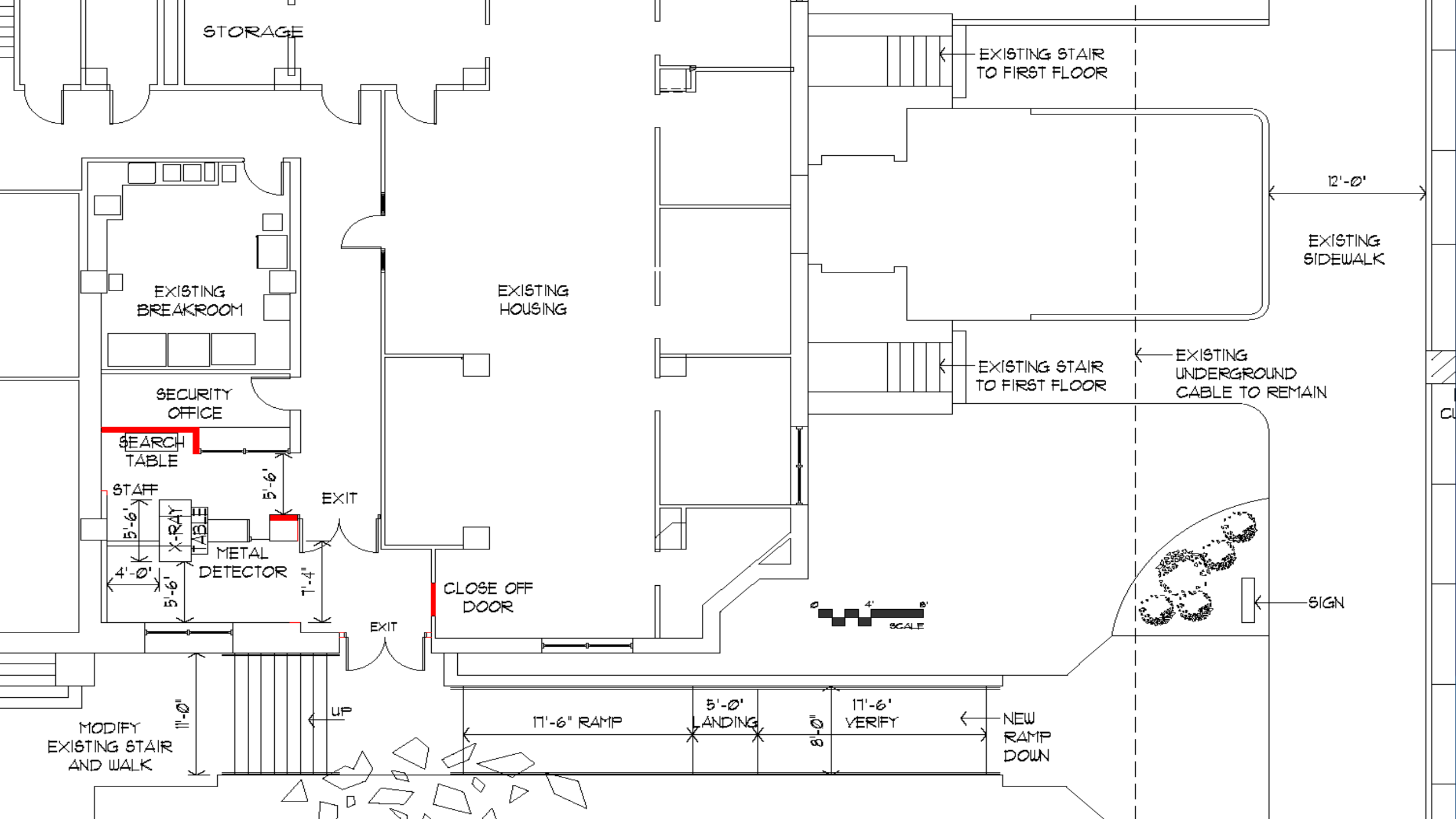
Estimated Cost - Exterior Modifications - \$150,000



City Hall – New Entrance (option A)



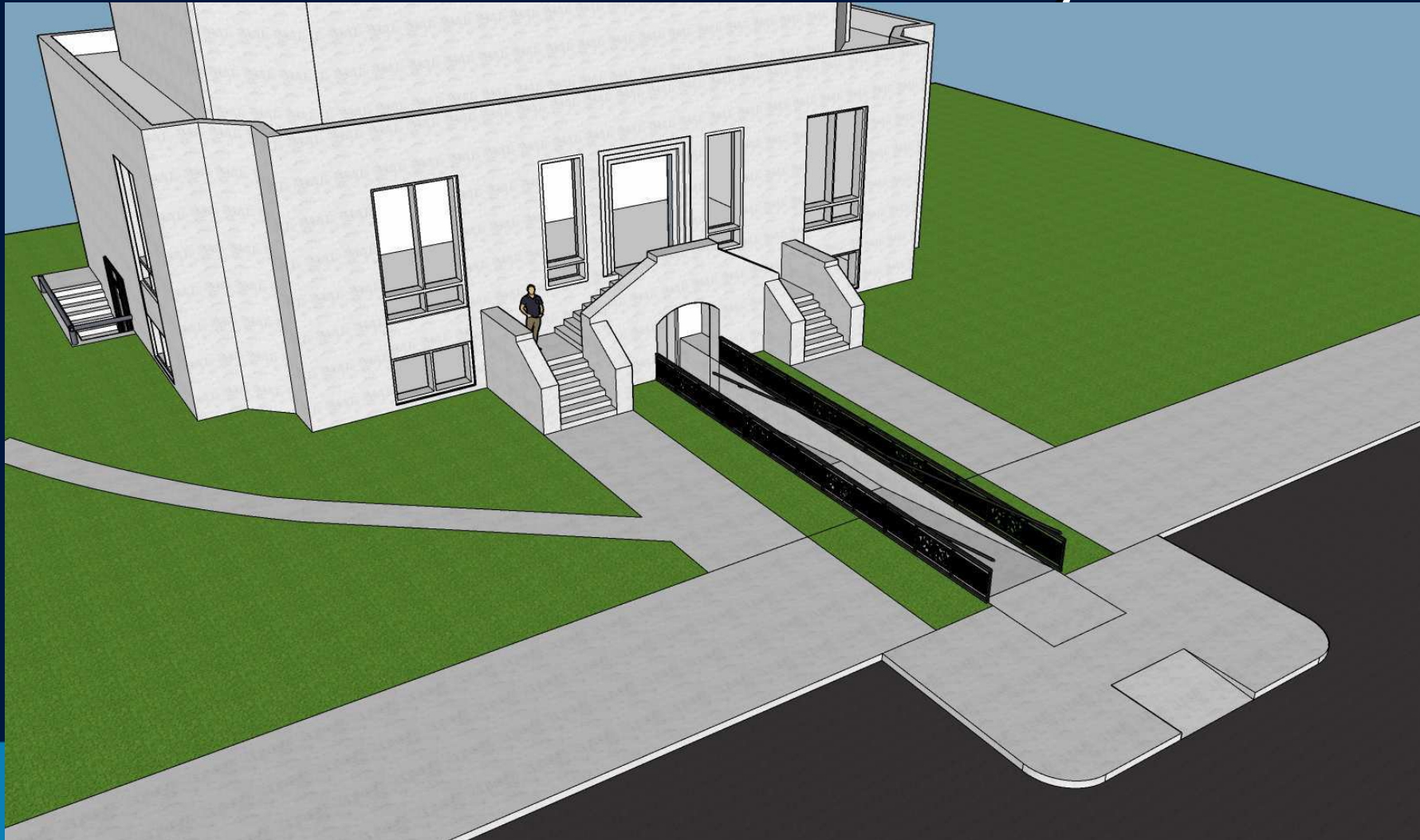
Estimated Cost – Interior Modifications - \$25,000



City Hall – Existing Entrance Franklin Avenue – Side of City Hall

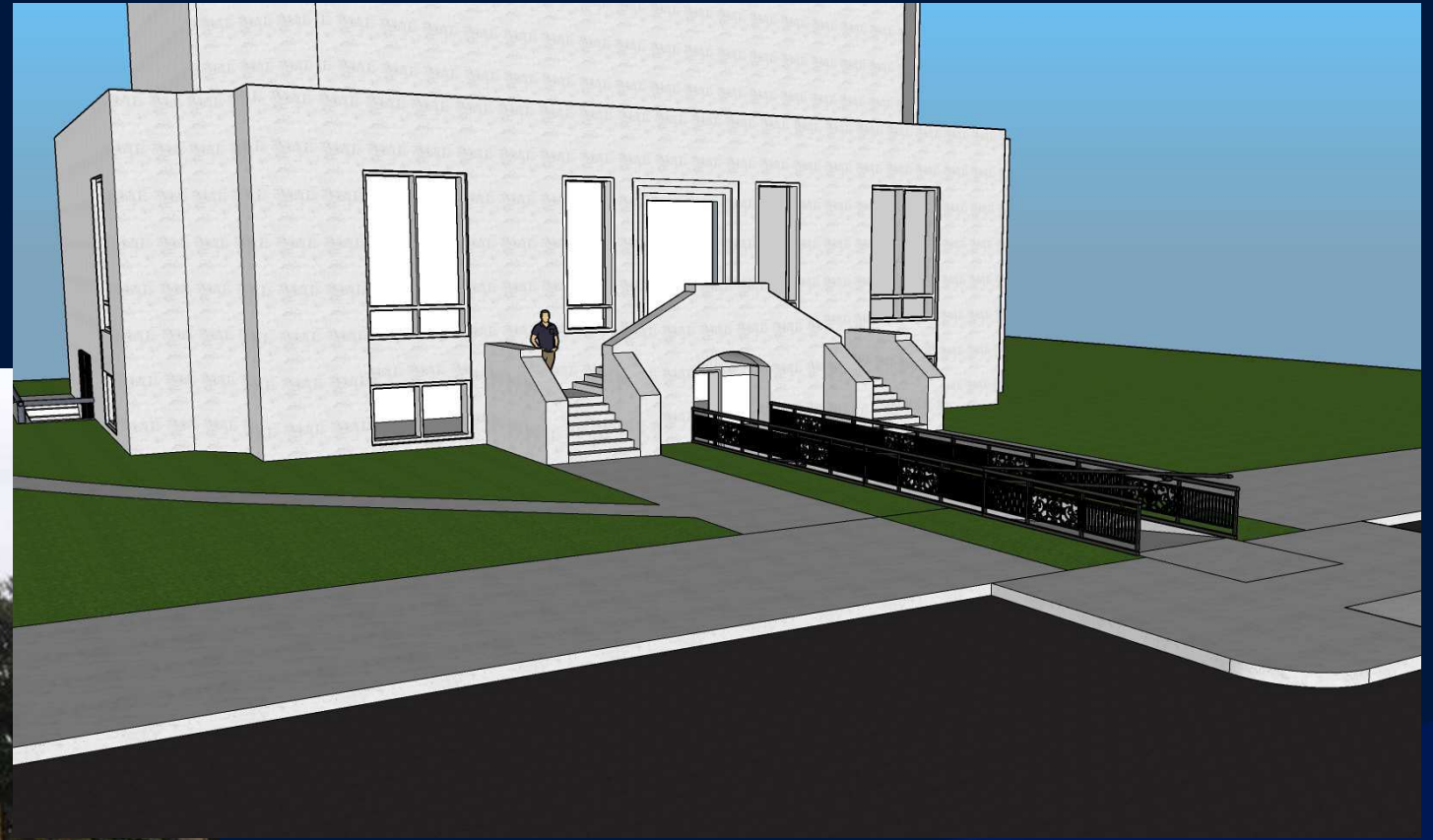


City Hall – New Entrance (option B) Franklin Avenue – Side of City Hall



Option B

Facing North



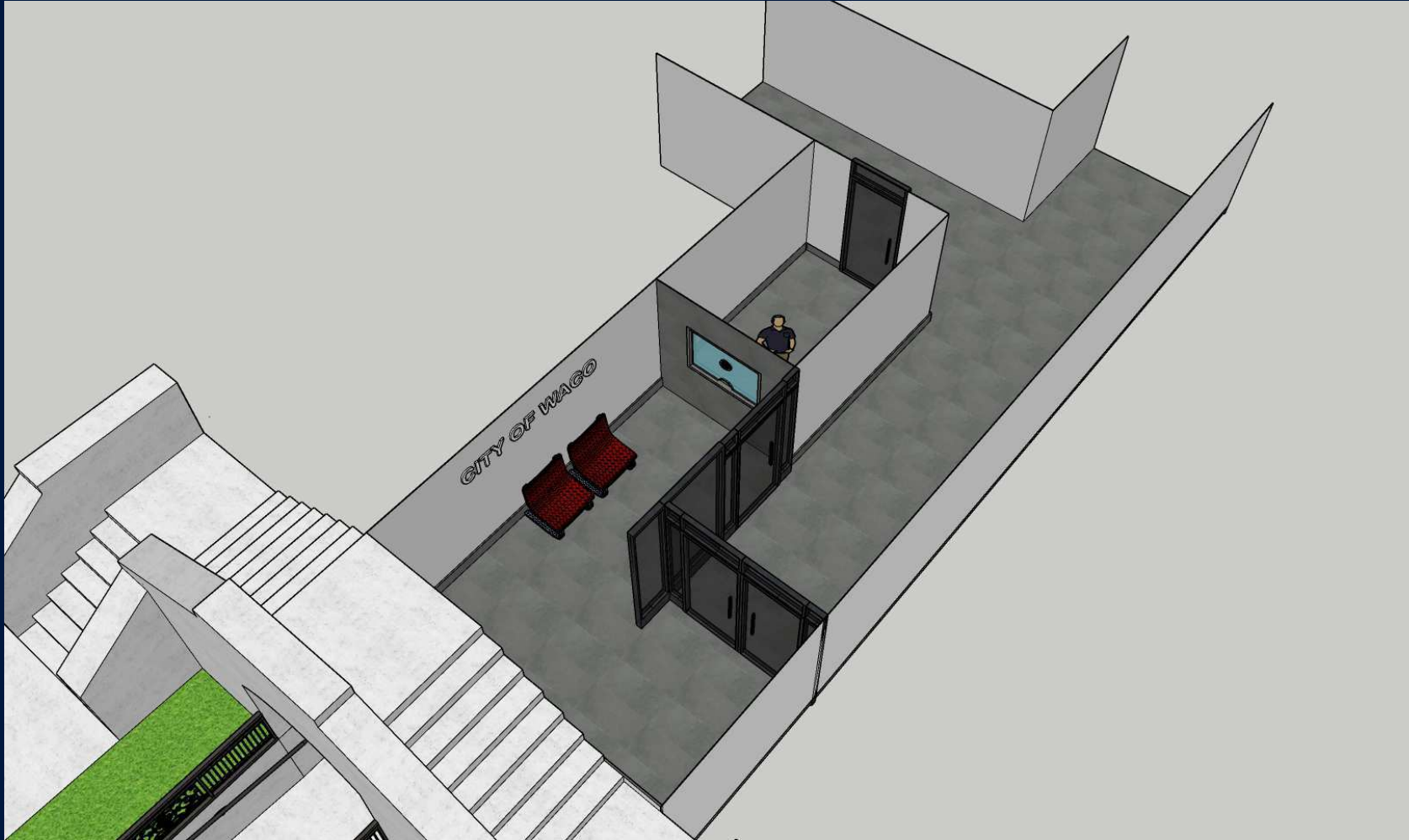
Option B

Facing Northwest



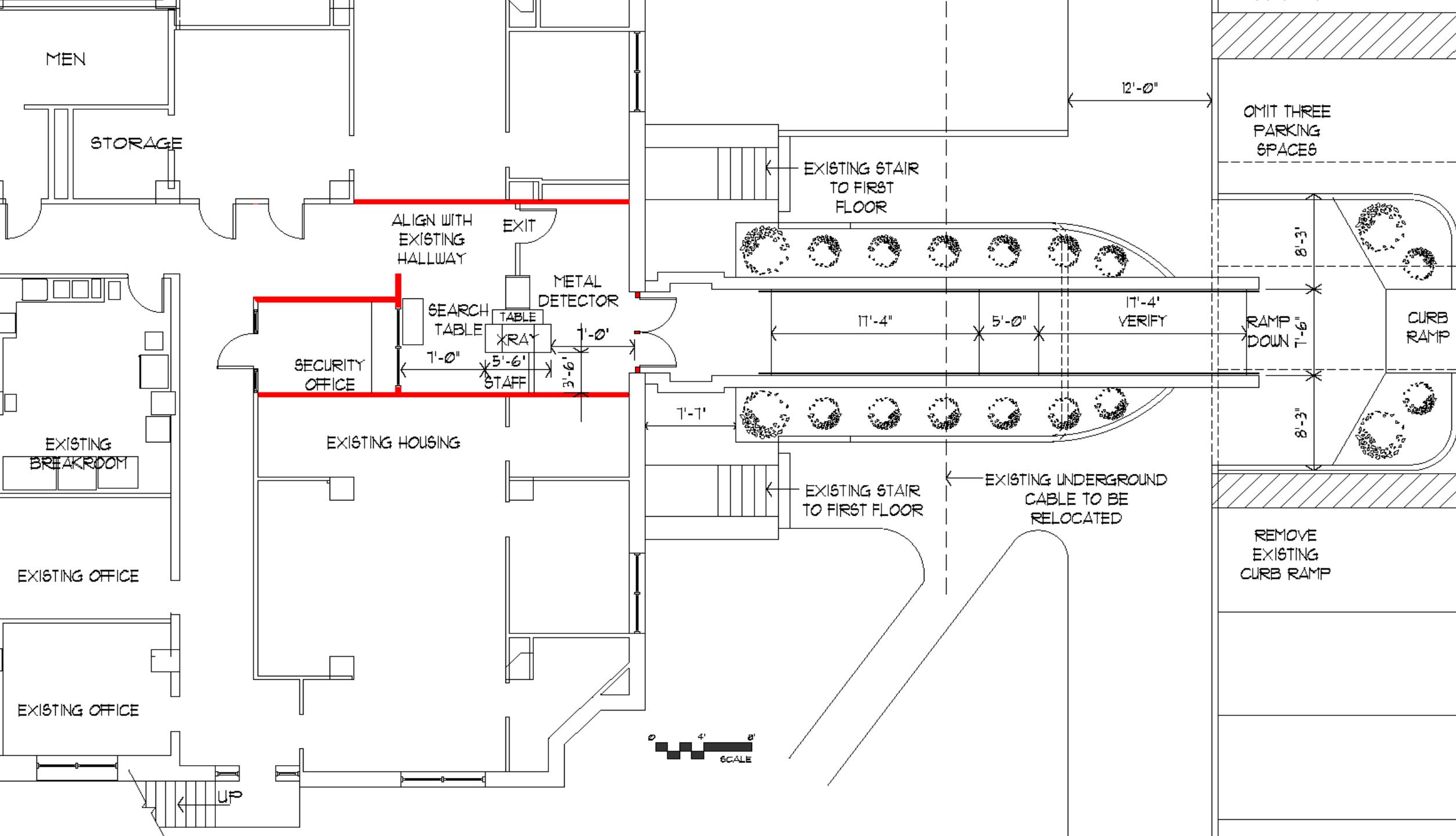
Estimated cost – Exterior Modifications \$175,000

City Hall – New Entrance (option B)



Estimated cost – Interior Modifications - \$55,000





City Hall Entrance

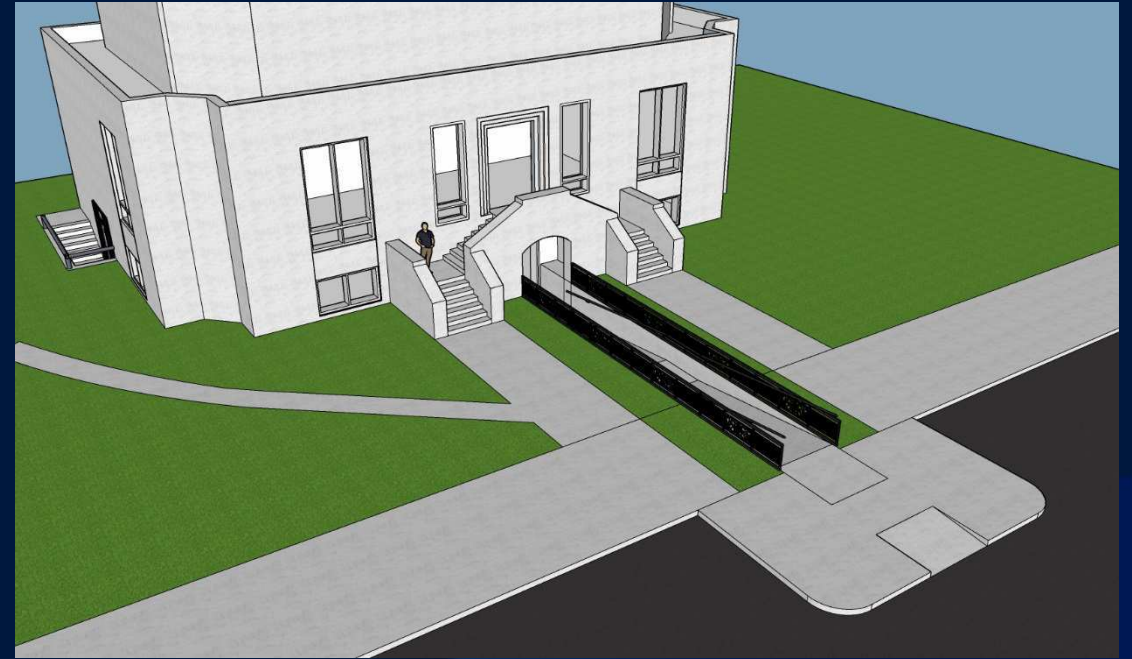
- Option A – Austin Avenue – Front of City Hall
 - \$210,000
 - Exterior and interior modifications
 - Security costs
 - Historic Landmark Preservation Commission preference
- Option B – Franklin Avenue – Side of City Hall
 - \$265,000
 - Exterior and interior modifications
 - Security costs



City Hall Entrance



\$210,000



\$265,000



City Hall Entrance

Questions?

