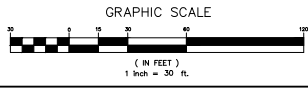
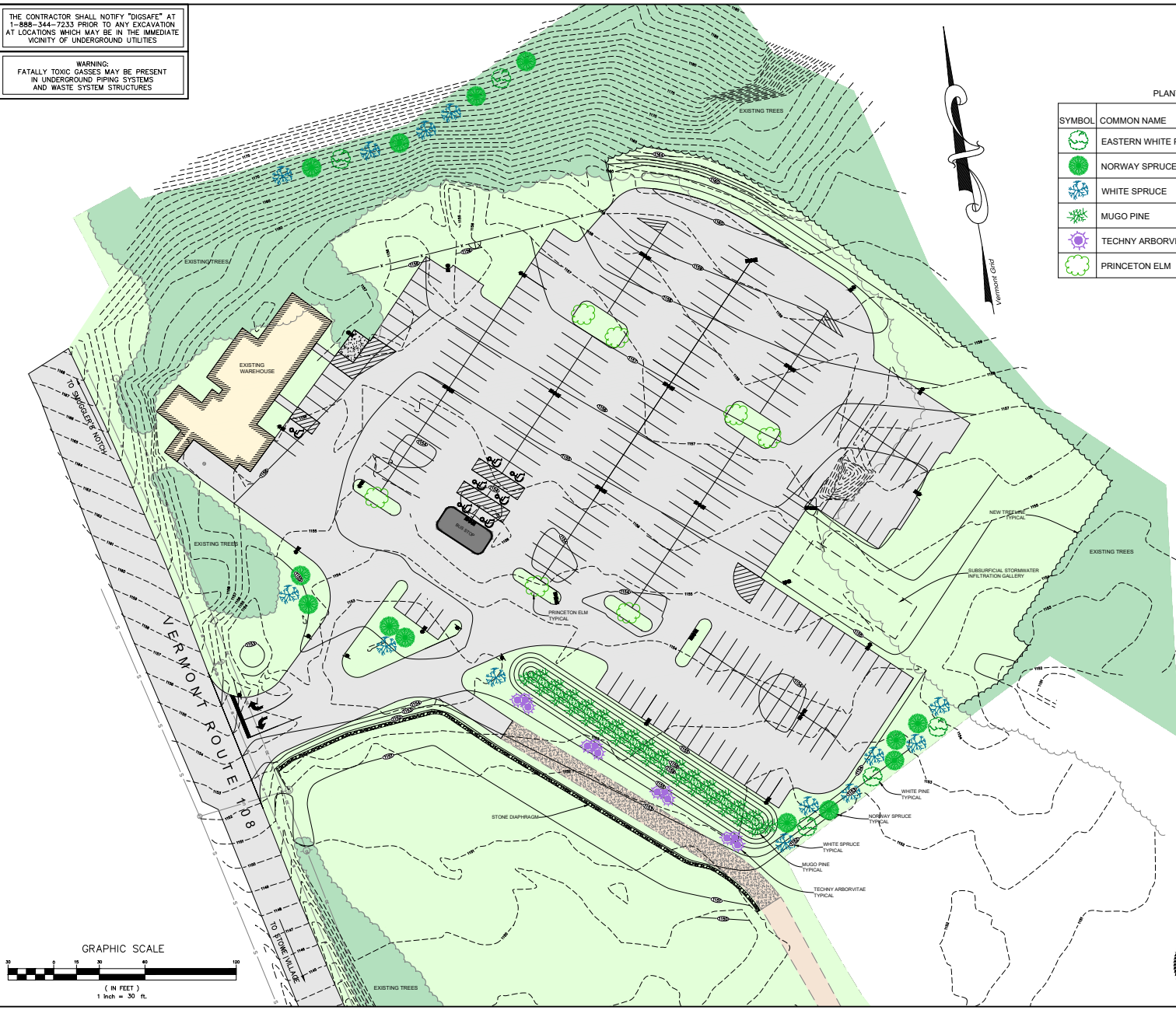


THE CONTRACTOR SHALL NOTIFY "DIGSAFE" AT 1-888-344-7233 PRIOR TO ANY EXCAVATION AT LOCATIONS WHICH MAY BE IN THE IMMEDIATE VICINITY OF UNDERGROUND UTILITIES.

WARNING:
FATALLY TOXIC GASES MAY BE PRESENT IN UNDERGROUND PIPING SYSTEMS AND WASTE SYSTEM STRUCTURES

PLANTING SCHEDULE

SYMBOL	COMMON NAME	LATIN NAME	QUANTITY	PLANTING HEIGHT
	EASTERN WHITE PINE	PINUS STROBUS	5	8'
	NORWAY SPRUCE	PICEA ABIES	15	8'
	WHITE SPRUCE	PICEA GLAUCA	12	8'
	MUGO PINE	PINUS MUGO	35	18"
	TECHNY ARBORVITAE	THUJA OCCIDENTALIS "MISSION"	12	3'
	PRINCETON ELM	ULMUS AMERICANA "PRINCETON"	7	8'



DATE	REVISION	REVISIONS PER TOWN COMMENTS	BY	JPK
DATE	REVISION	REVISED PARKING LOT CONFIGURATION	BY	JLD
DATE	REVISION	REVISED PROPERTY BOUNDARY PER LITTLE	BY	JLD
DATE	REVISION	REVISED SURVEY COMMENTS, I.L.C. CORRECTION DISPLAY, JUNE 2008	BY	JLD
DATE	REVISION		BY	

CLIENT
VR US HOLDINGS II, LLC.
5781 MOUNTAIN ROAD
STOWE, VERMONT 05672

PROJECT TITLE
HARLOW HILL EAST
PROPOSED PARKING IMPROVEMENTS

DRAWING TITLE
LANDSCAPING PLAN



Survey: BFD/SOL
Design: JLD
Drawn: JLD
Checked: JLD
Date: 01/17/2023

Scale: 1" = 30'
Job: 15-250
File:
Drawing:
Date: 01/17/2023

Donald L. Hamlin
Consulting
Engineers, Inc.
156 Pearl Street
Essex Junction, Vermont

LS-1