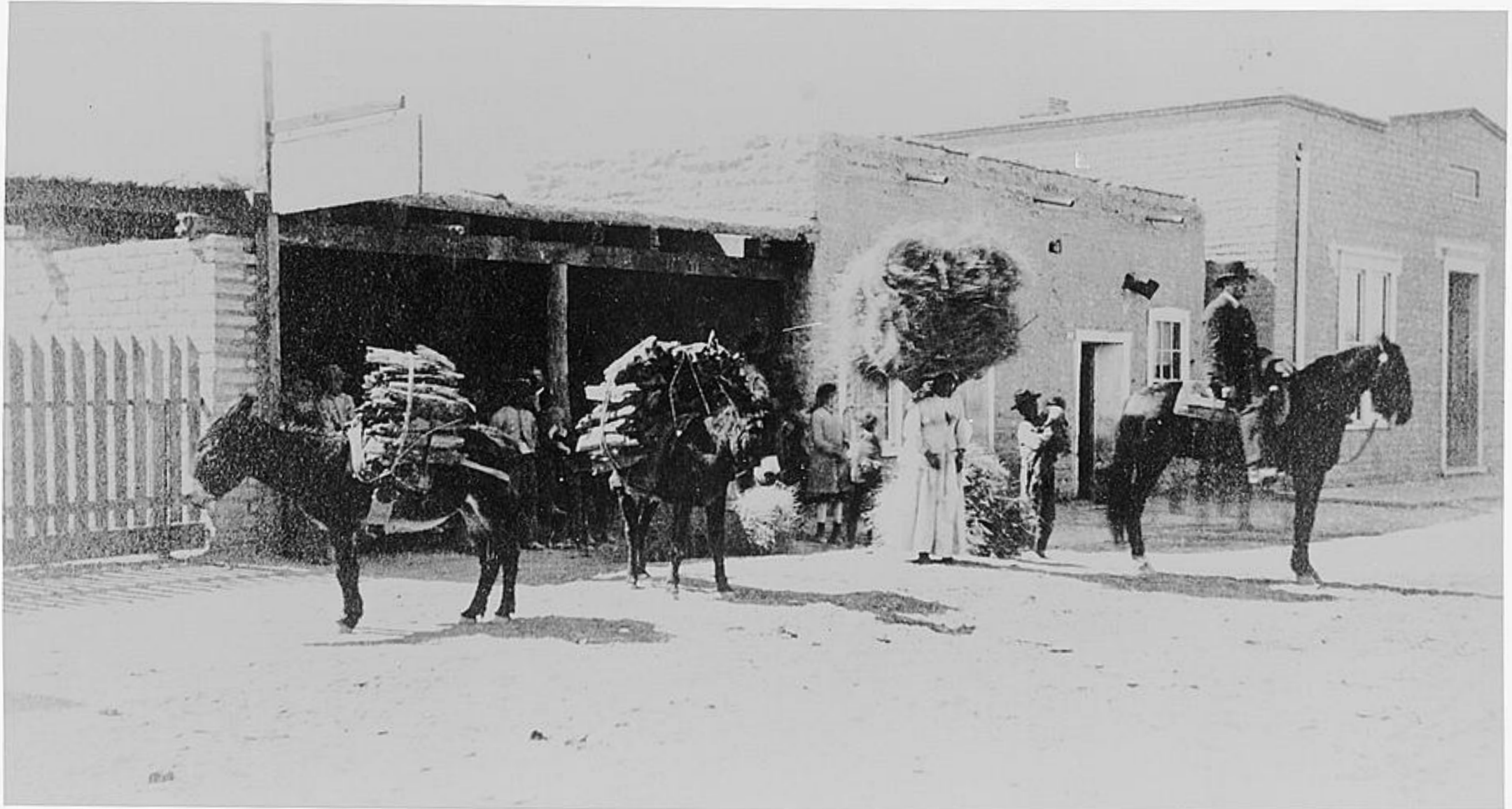


# Tucson Building Pre-Restoration

**HALEY**  
**ALDRICH**

## South Meyer Avenue 1880s





Circa 1930s



Circa 1915 Structure

Circa 1920 Addition

First use of food stamps in Arizona  
– Lee Ho Market,  
1934

Lee Ho and his  
nephew Jerry Lee



Circa 1940



# 1946 Facade, Taken 1980



# 1946 Grand Reopening





# 1946 Grand Reopening



# 1946 Grand Reopening



# 1946 Grand Reopening

Jerry Lee (right),  
Wallace Lee



1978



Building Wall Art  
– 1970s



2007



2007

2007

















