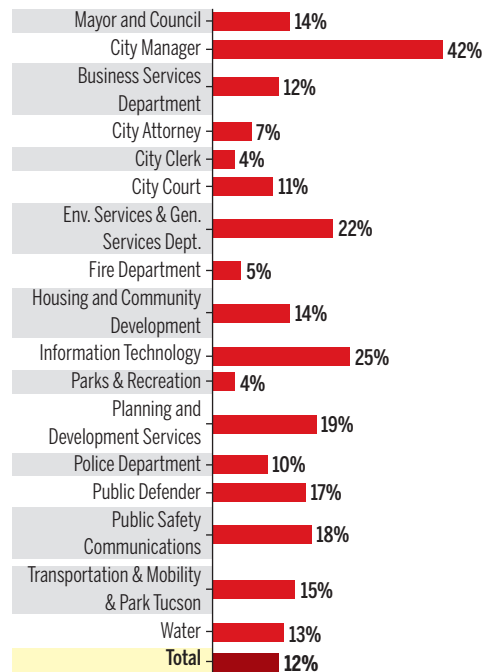


Pima County and Tucson May vacancy rates

As Pima County and the city of Tucson grapple with pay raises for employees, both are experiencing issues with recruitment and retention. In May, the county had an average vacancy rate, or percentage of unfilled positions, of about 16%, while the city's vacancy rate was about 12%.

City vacancy rates (May 2022)



County vacancy rates (May 2022)

