



SAINT MARY-OF-THE-WOODS
COLLEGE



Saint Mary- of-the-Woods

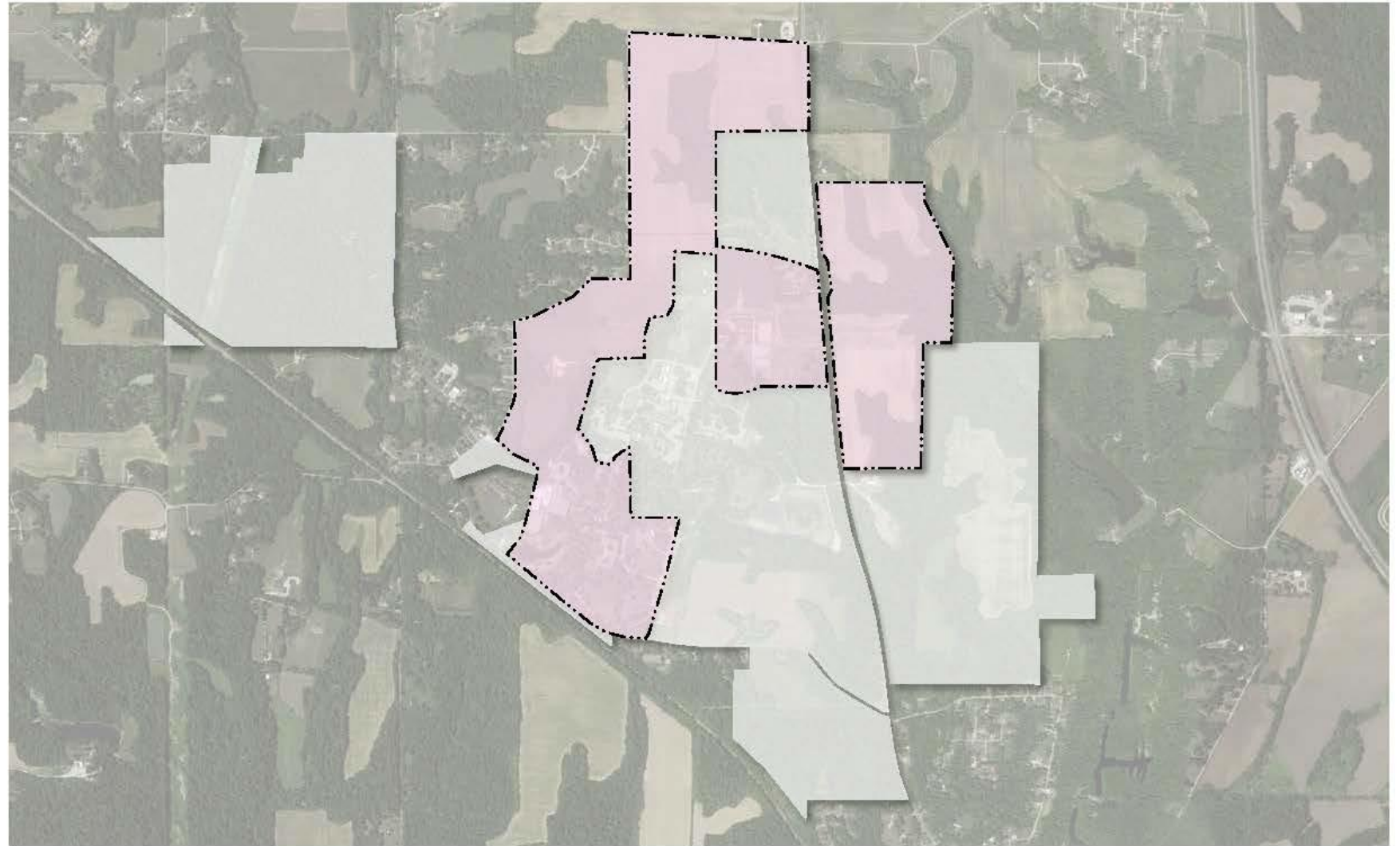
campus master plan

REGIONAL MAP

The St. Mary-of-the-Woods College campus is uniquely intertwined with the Sisters of Providence property. While those intimate with the College may understand the distinction between the two campuses, to an unfamiliar visitor the lines between the properties are blurred. Thus these complementary campuses must balance a cohesive atmosphere with a clarity in wayfinding and access. Improvements to either campus will certainly impact and may be mutually beneficial for both organizations.

Land Ownership

- Sisters of Providence
- Saint Mary of the Woods Campus



OPEN SPACE FRAMEWORK

A defining moment on The St. Mary-of-the-Woods campus is the procession along the Avenue as visitors move along this boulevard towards the fountain at its terminus. The character of this campus axis is defined by the tree lined boulevard flanked by buildings that are significantly set back from the road. These setbacks allow the focus to be on natural landscapes. As future campus developments are considered, maintaining these setbacks (indicated by red dashed line) will maintain the character of this defining campus moment.





SAINT MARY-OF-THE-WOODS
COLLEGE

CAMPUS CORE FRAMEWORK PLAN

The framework plan for the campus core suggests locations for future building development as well as revisions to roadway systems, pedestrian circulation and parking. Some developments identified here include:

- Hullman Hall Expansion to support science and nursing programs. Additionally building configuration could screen unattractive building service entrance.
- Reconfiguration of campus parking along Eastgate Road. This provides separation between the roadway and parking areas.
- Removing vehicular access between The Avenue and the east side of Le Fer as well as along the west side of Le Fer. Maintain access for emergency or event specific vehicles only.
- Future housing development to create a residential district in the south east section of campus.
- Re-align where Guerin Road crosses the Avenue to simplify circulation and create open space in front of the library and future academic building.

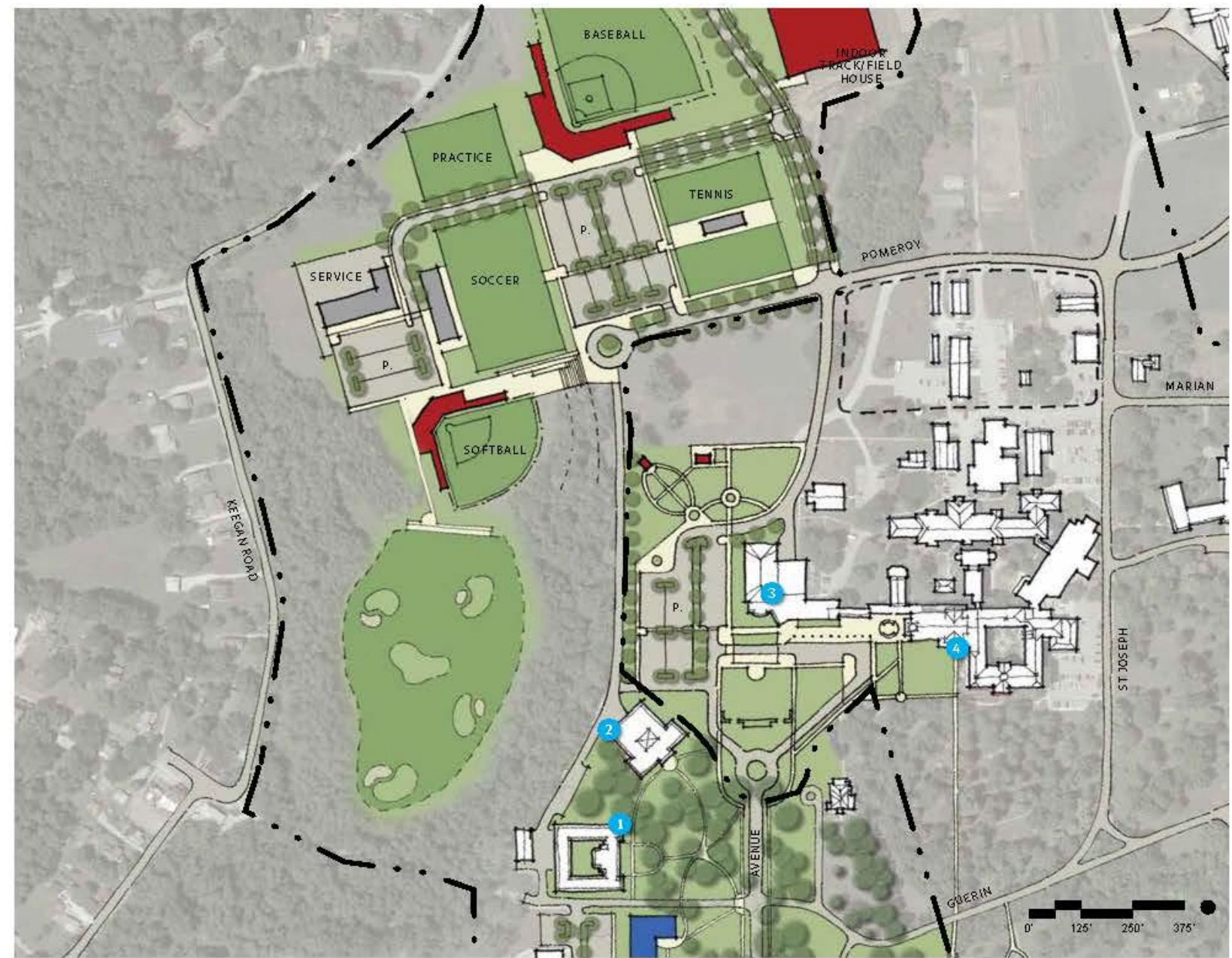
- | | | | |
|---|---|---|---------------------------------|
| 1 | Knoerle Center | A | Knoerle Center Expansion |
| 2 | Rooney Center | B | Proposed Academic Building |
| 3 | Le Fer Hall | C | Proposed Residential Building |
| 4 | Hullman Hall | D | Proposed Hullman Hall Expansion |
| 5 | Guerin Hall | | |
| 6 | Conservatory of Music | | |
| 7 | Corbe House | | |
| 8 | Woodland Inn | | |
| 9 | Student Housing & Dining Center (2021 Completion) | | |



MID-CAMPUS FRAMEWORK PLAN

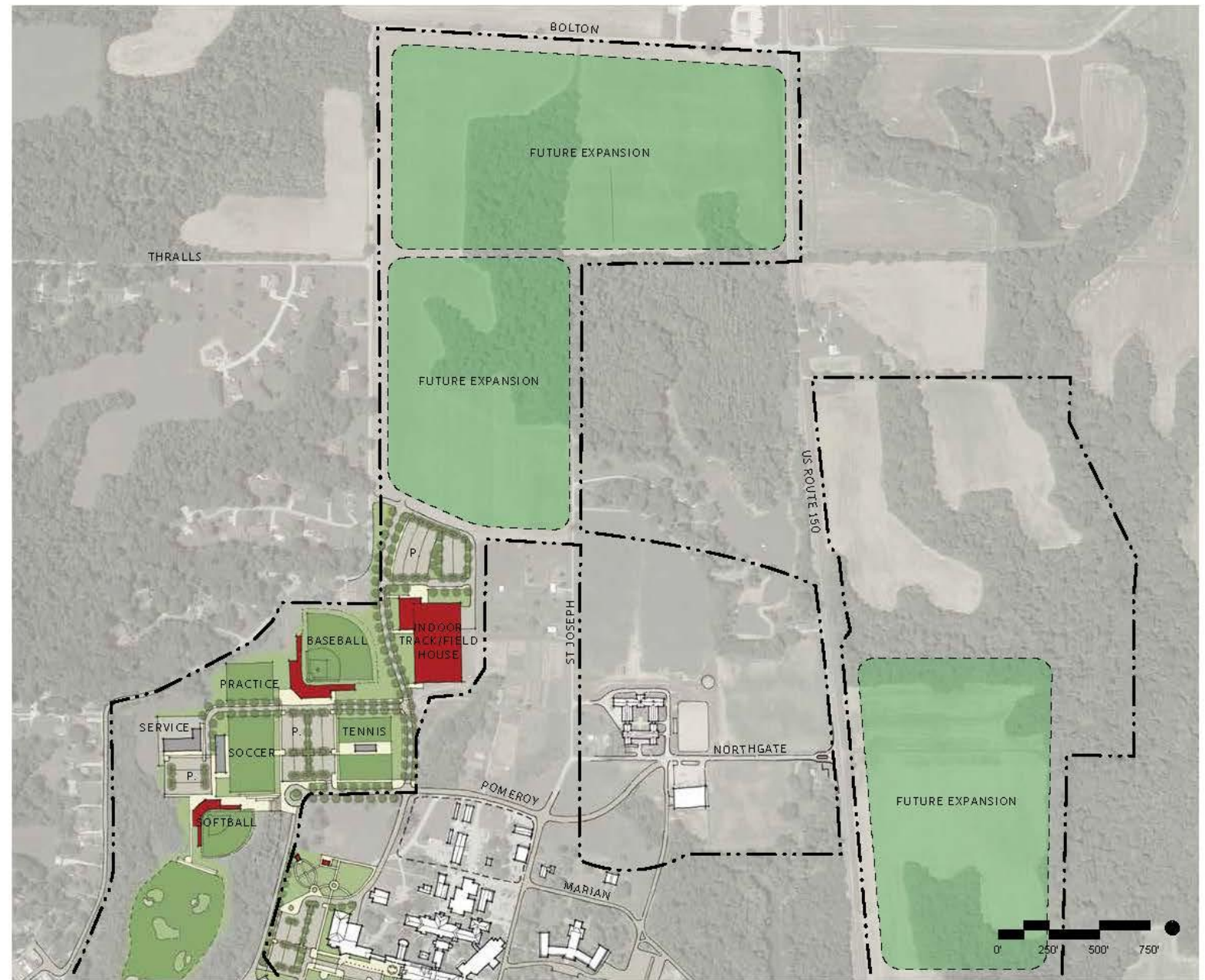
The framework plan for the mid-campus illustrates potential modifications to roadway systems, pedestrian circulation and parking. A separate study of Sisters-of-Providence property is planned to further evaluate improvements and efforts for campus-wide synergies.

- 1 Guerin Hall
- 2 Conservatory of Music
- 3 O'Shaughnessy Dining Hall
- 4 Church of Immaculate Conception



NORTH & EAST CAMPUS EXPANSION OPPORTUNITIES

Additional property owned by the College is located to the north and east of the existing developed campus. These lands can be leveraged as expansion for athletics, equine facilities, agricultural use, or for partnerships with other private/public parties (e.g. educational, health care, residential) that help support or enhance the mission of the College.





SAINT MARY-OF-THE-WOODS
COLLEGE