

Ten years of rebuilding

The new World Trade Center is rising from ground zero. Two skyscrapers, a memorial, a museum and a transit hub are under construction. Three more towers and a performing arts center are planned.



1 World Trade Center
(Formerly Freedom Tower)
1,776 feet high, 102 stories
2.6 million square feet
Construction began April 2006
Scheduled to open in 2013
It will have 69 office floors, a restaurant, an enclosed observation deck and a two-level broadcast facility.

2 World Trade Center
1,349 feet high, 88 stories
3.1 million rentable square feet
The foundation construction began the summer of 2010.

7 World Trade Center
750 feet high, 52 stories
1.7 million square feet
The rebuilt tower opened in May 2006 and is two-thirds leased.

Performing Arts Center
1,000-seat venue with focus on modern dance
No construction is scheduled while site is used as an exit from commuter trains.

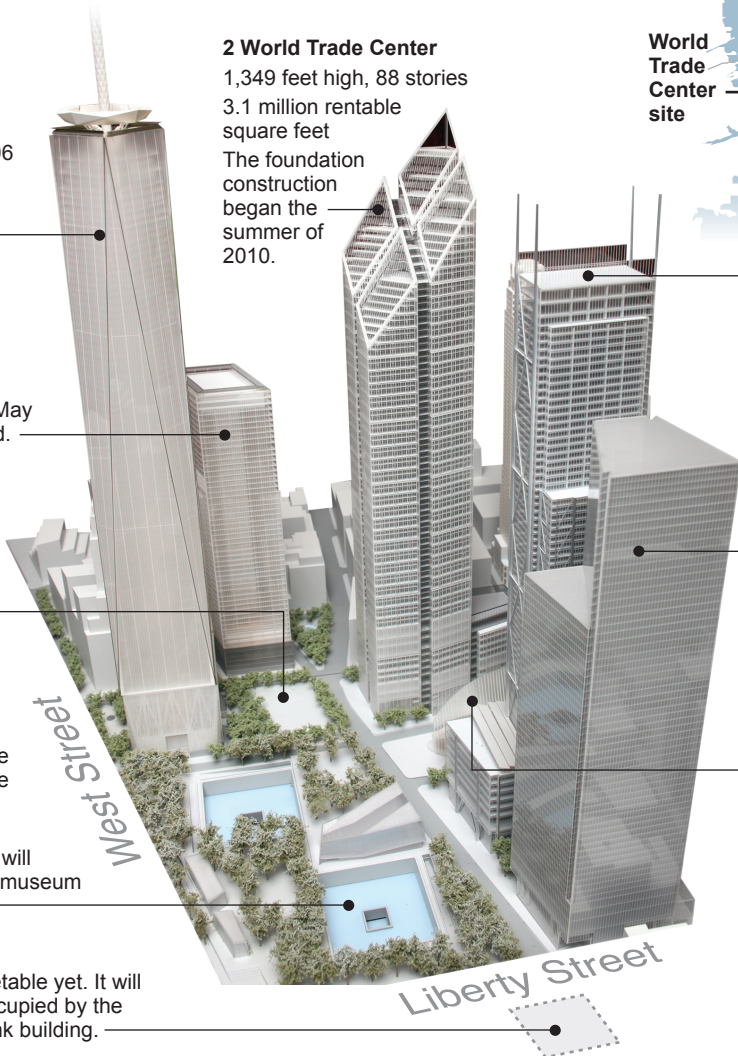
The National September 11 Memorial & Museum
Reflecting pools where the Trade Center towers stood
Names of 2,987 victims of the 1993 and 2001 attacks will be inscribed around pools in the 8-acre plaza.
The above-ground memorial will open Sept. 11, 2011 and the museum will open in 2012.

5 World Trade Center
There is no construction timetable yet. It will stand on the site formerly occupied by the remains of the Deutsche Bank building.

3 World Trade Center
1,170 feet high
80 stories
2.8 million square feet
Construction began summer 2010
The building will include 53 floors of office space and five retail levels.

4 World Trade Center
977 feet high
72 stories
2.3 million square feet
It includes retail and commercial office space.

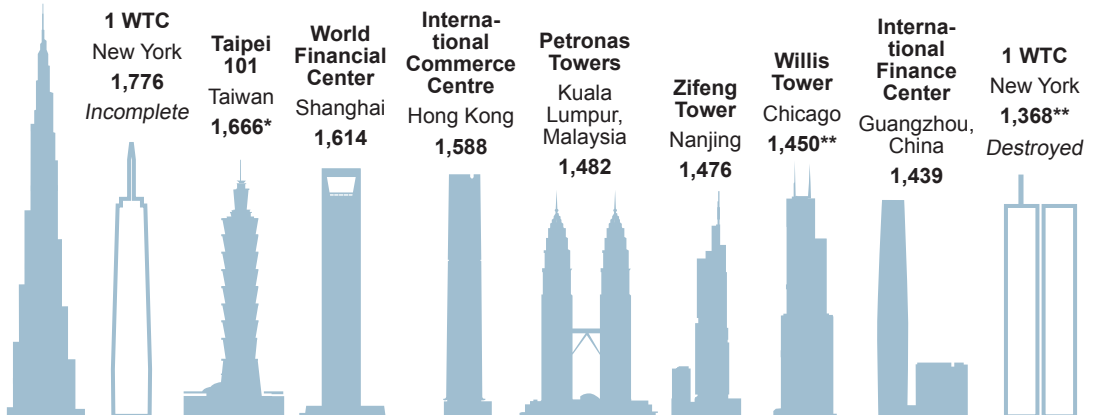
World Trade Center Transportation Hub
800,000 square feet, comparable to Grand Central Terminal
It will provide access to PATH commuter rail, subway lines and Hudson River ferries.
It is expected to be completed by 2014.



Among giants

1 World Trade Center will be among the tallest buildings in the world. The towering Burj Khalifa was completed last year.

Burj Khalifa
Dubai, UAE
2,717 feet



* Top of spire ** Top of roof

SOURCES: Council on Tall Buildings and Urban Habitat; Silverstein Properties; The Port Authority of New York & New Jersey

AP