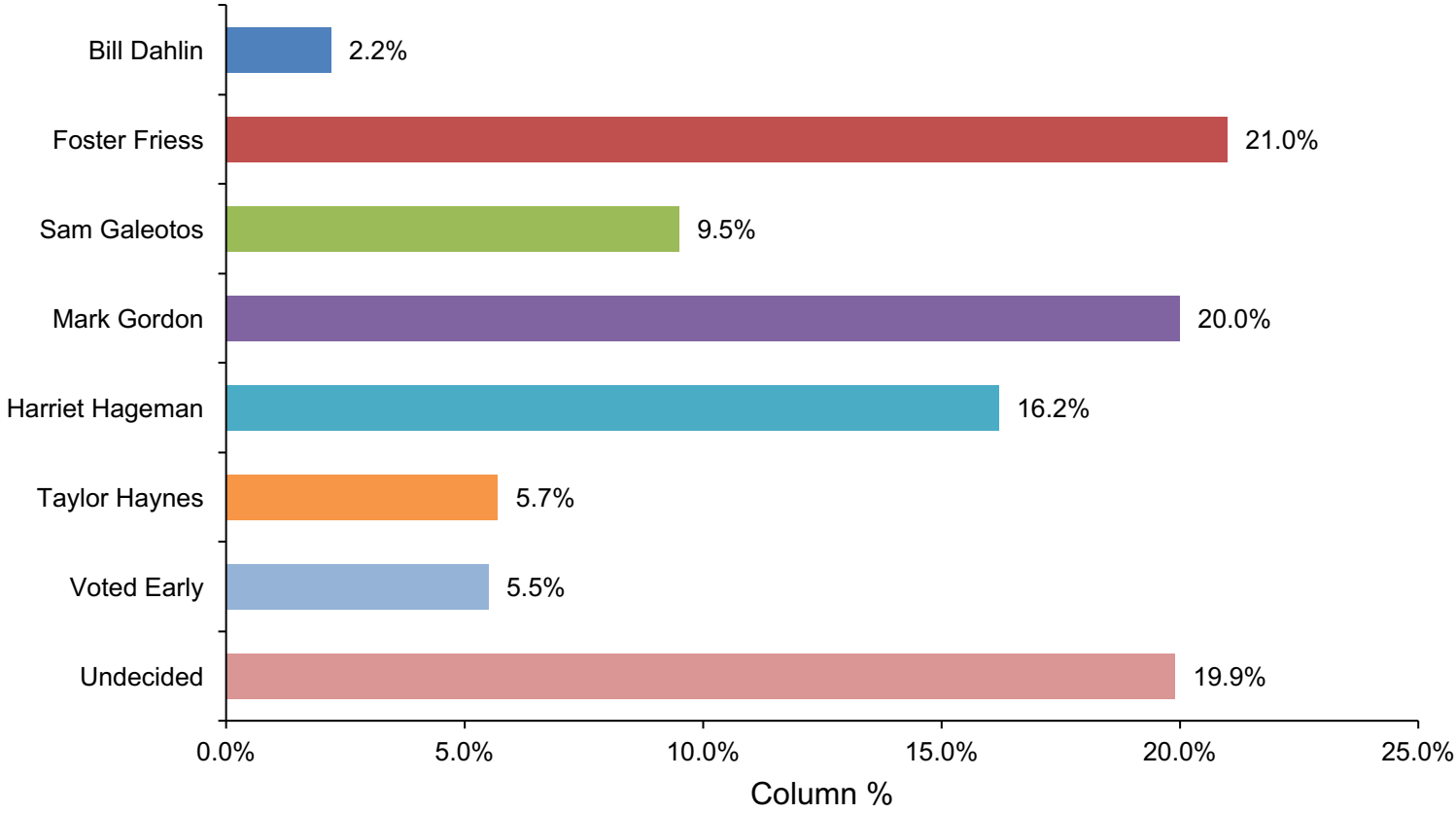


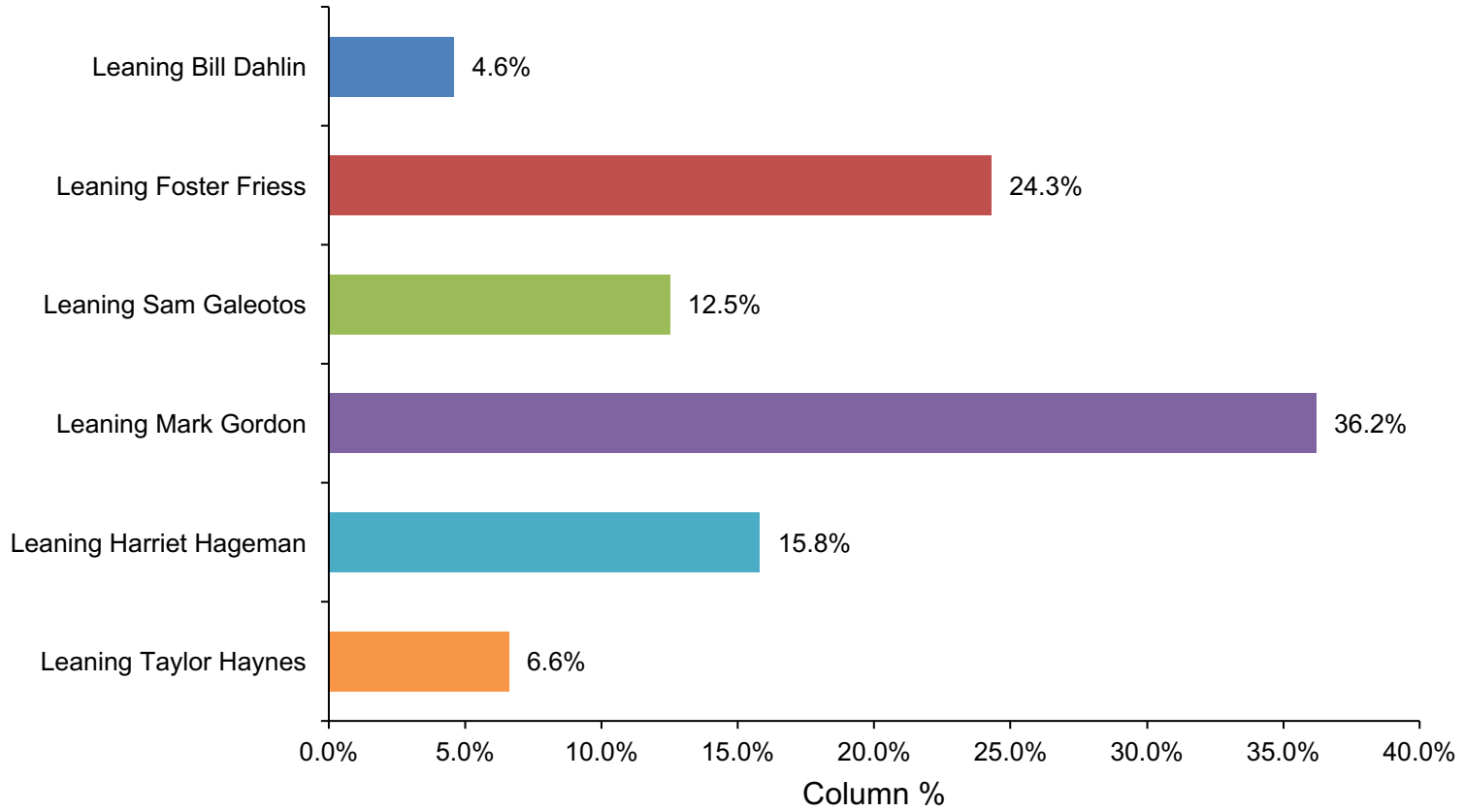


**WY GOP Primary Governor Poll**  
**Conducted 8/11-14/18**  
**1775 Respondents**  
**Likely 2018 GOP Primary Voters**  
**Margin of Error: +/- 2.35**  
**Response Rate: 1.31%**  
**Confidence: 95%**  
**Response Distribution: 50%**

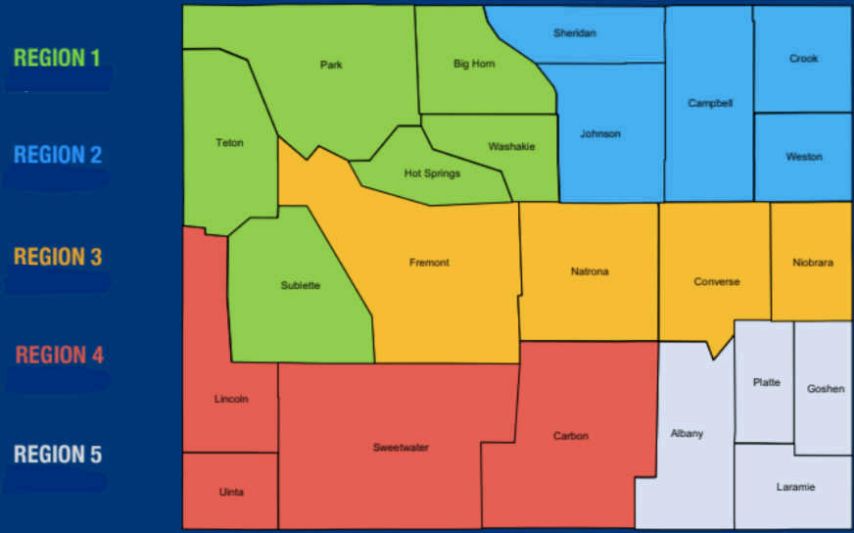
# Gov Ballot Test



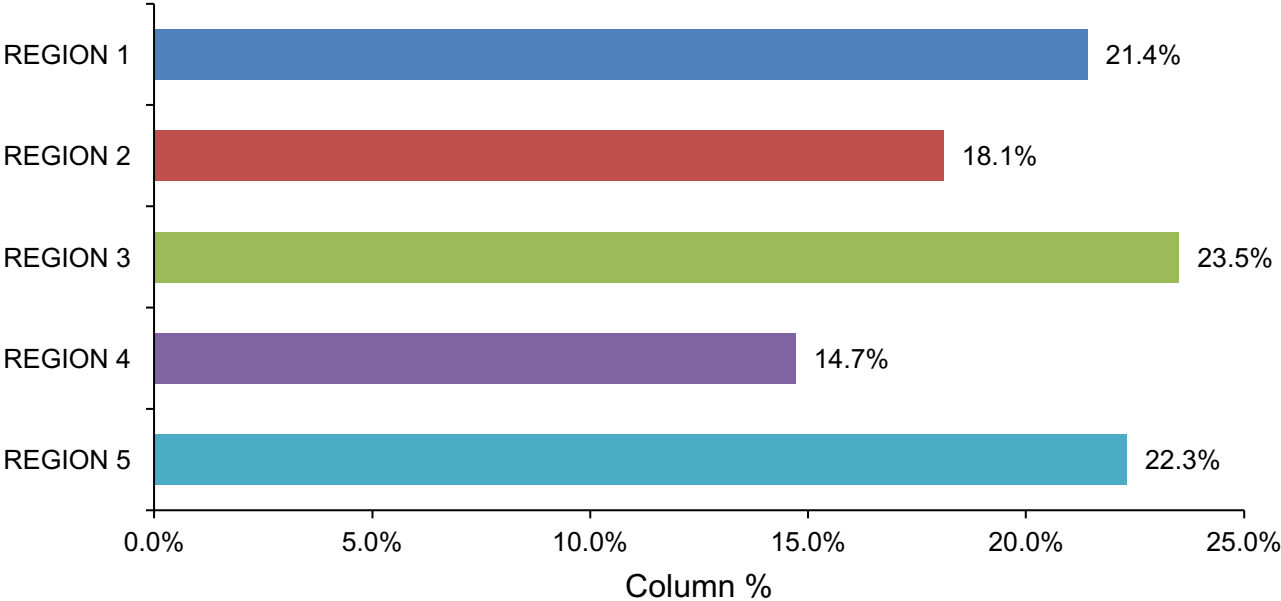
## Early Vote Breakdown



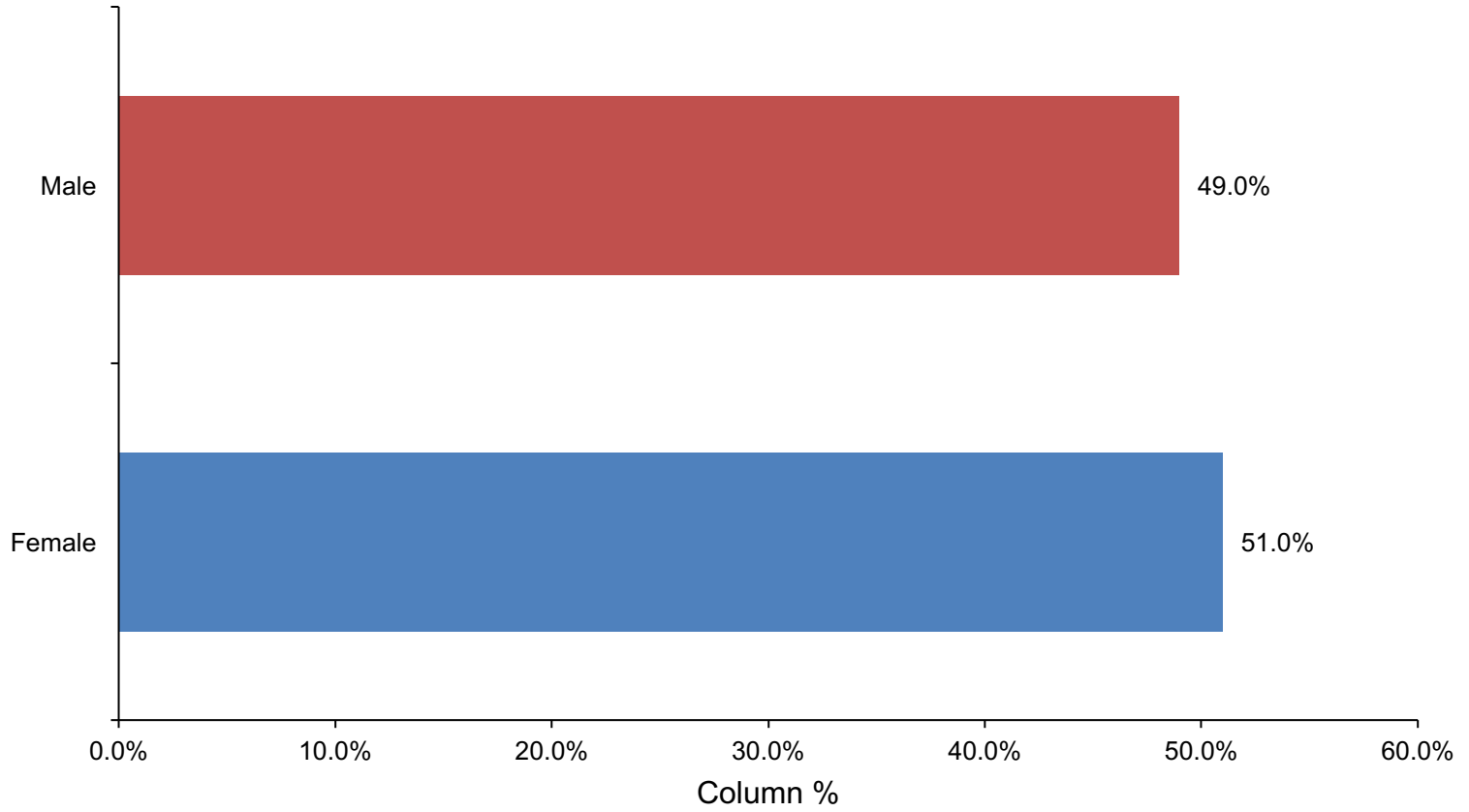
# REGION



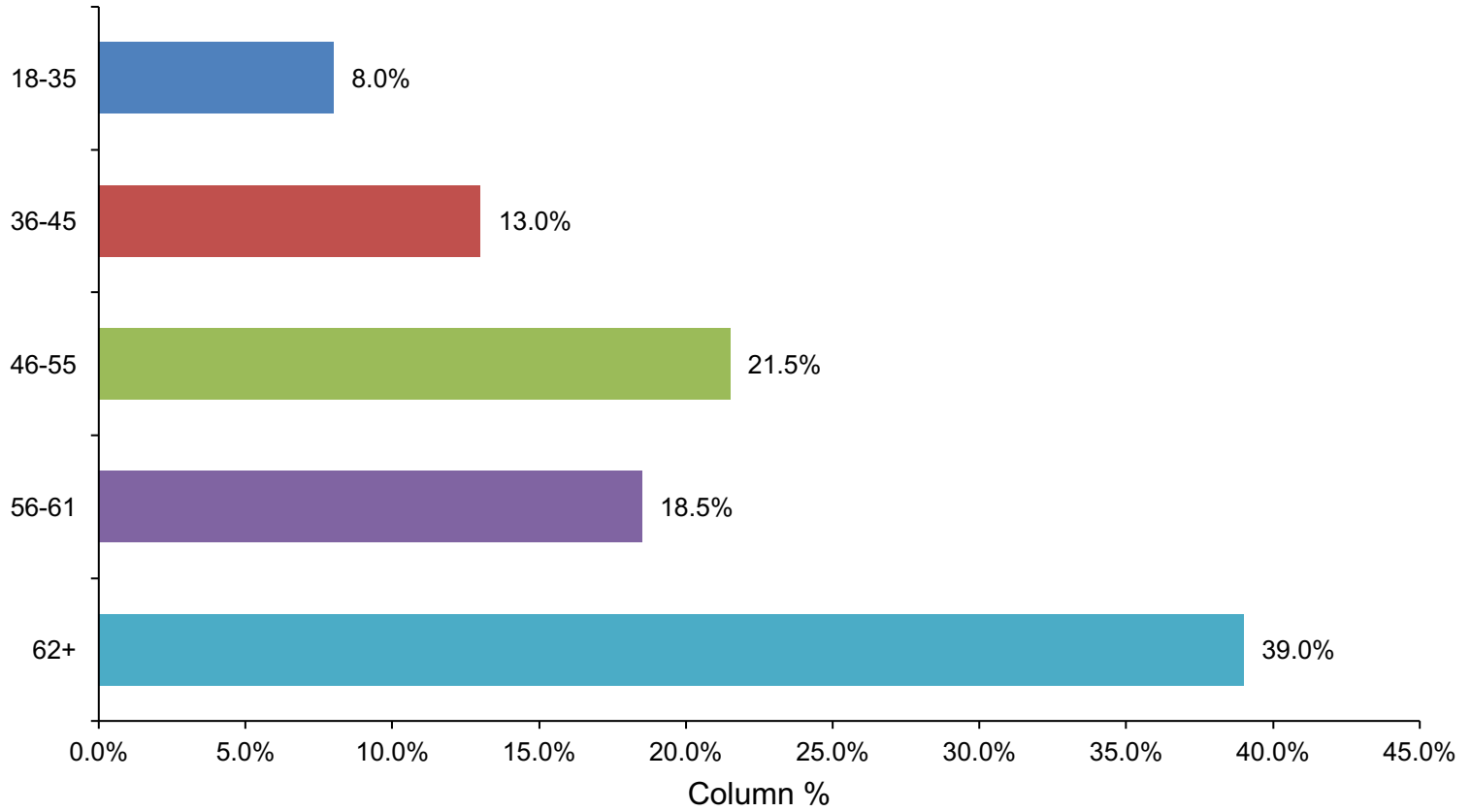
■ REGION 5   
 ■ REGION 4   
 ■ REGION 3   
 ■ REGION 2   
 ■ REGION 1



# GENDER



## AGE RANGE



# Methodology

Likely voters were selected at random from a list of registered voters modeled to reflect their likeliness of participating in the Republican primary election based on past election participation and registration date, as well as demographic, geographic, and consumer information. In excess of 50,000 households were contacted over the duration of the poll.

Live interviewers were used to contact participants, in addition to automated voice response technology in order to identify and compensate for possible social desirability bias. Email surveys were also used to enrich the voter sample. The calls are placed to randomly-selected cell phone and landline numbers from our modeled universe through a stratified process that ensures appropriate geographic and demographic representation. These calls were placed from 6:00pm to 8:30pm local time from Saturday, August 11<sup>th</sup> through Tuesday, August 14<sup>th</sup>. The email surveys were also used in order to identify and compensate for possible social desirability bias.

Survey results undergo a weighting process to ensure the sample is comparable to the geographic and demographic breakdown of expected Wyoming 2018 Republican primary election participants. Final results are based on these weights in order to address non-response bias.

# **Ballot Test Crosstabs: Gender & Age Range**

August 15, 2018

Generated by MarketSight®



## Table of Contents

### **Uncategorized Variables**

Page Variable

3 WY Governor Ballot Test † \* If the republican primary election for Governor was held today, for whom would you vote?

\* Denotes variable with statistically significant findings  
† Indicates variable-specific weighting

WY Governor Ballot Test †

If the republican primary election for Governor was held today, for whom would you vote?

	GENDER			AGE RANGE						
	Total	Female (A)	Male (B)	Total	18-35 (C)	36-45 (D)	46-55 (E)	56-61 (F)	62+ (G)	
		*			*					
<b>Bill Dahlin</b> Column %	2.2%	1.7%	2.7%	2.2%	3.1%	<b>0.9%</b>	<b>0.9%</b>	1.7%	<b>3.4%</b> EF	
<b>Foster Friess</b> Column %	21.0%	21.2%	20.8%	21.0%	<b>8.5%</b>	<b>20.2%</b> D	<b>25.0%</b> D	<b>23.9%</b> D	<b>20.3%</b> D	
<b>Sam Galeotos</b> Column %	9.5%	8.9%	10.1%	9.5%	<b>12.8%</b> F	<b>15.2%</b> FG	<b>3.4%</b>	<b>8.0%</b> F	<b>10.6%</b> F	
<b>Mark Gordon</b> Column %	20.0%	18.8%	21.3%	20.0%	<b>35.6%</b> EFGH	<b>14.5%</b>	<b>13.8%</b>	<b>17.7%</b>	<b>22.9%</b> EFG	
<b>Harriet Hageman</b> Column %	16.2%	<b>20.6%</b> B	<b>11.7%</b>	16.2%	<b>8.4%</b>	<b>17.2%</b> DH	<b>23.3%</b> DH	<b>20.7%</b> DH	<b>11.7%</b>	
<b>Taylor Haynes</b> Column %	5.7%	5.5%	6.0%	5.7%	<b>0.0%</b>	<b>11.2%</b> DGH	<b>9.9%</b> DGH	<b>3.8%</b> D	<b>4.2%</b> D	
<b>Early Voted</b> Column %	5.5%	6.1%	4.8%	5.5%	<b>7.7%</b> EF	<b>2.4%</b>	<b>3.3%</b>	<b>6.0%</b> E	<b>6.8%</b> EF	
<b>Undecided</b> Column %	19.9%	<b>17.3%</b>	<b>22.6%</b> A	19.9%	24.0%	18.4%	20.3%	18.2%	20.2%	

\* Statistically significant result within this Column Variable at 95%

Significant Difference within Groups: ABC / DEFGHI. Upper case at 95%

Weight Variable = General Weights IV

# **Ballot Test Crosstabs: Regions**

August 15, 2018

Generated by MarketSight®

## Table of Contents

### **Uncategorized Variables**

Page Variable

3 WY Governor Ballot Test \* If the republican primary election for Governor was held today, for whom would you vote?

\* Denotes variable with statistically significant findings

WY Governor Ballot Test

If the republican primary election for Governor was held today, for whom would you vote?

	Region					
	Total	1 (A)	2 (B)	3 (C)	4 (D)	5 (E)
	*					
<b>Bill Dahlin</b> Column %	2.2%	2.7% C	5.7% ACDE	0.5%	1.1%	1.2%
<b>Foster Friess</b> Column %	21.0%	23.7% BE	11.4%	25.3% BE	35.9% ABCE	12.9%
<b>Sam Galeotos</b> Column %	9.5%	7.9%	6.5%	14.1% ABE	9.1%	9.0%
<b>Mark Gordon</b> Column %	20.0%	18.6% D	23.5% CD	15.8%	11.3%	28.2% ACD
<b>Harriet Hageman</b> Column %	16.2%	12.1%	14.5%	18.2% A	20.0% A	16.9%
<b>Taylor Haynes</b> Column %	5.7%	4.7%	4.1%	4.8%	4.5%	10.0% ABCD
<b>Early Voted</b> Column %	5.5%	6.1%	6.3%	4.4%	7.9% E	3.7%
<b>Undecided</b> Column %	19.9%	24.1% CDE	28.0% CDE	17.0% D	10.3%	18.1% D

\* Statistically significant result within this Column Variable at 95%

Significant Difference within Groups: ABCDEF. Upper case at 95%

Weight Variable = General Weights IV