

KELLY WALSH

KWS

Looking at the past, present, and future of education in Natrona County





WE COVER EDUCATION

The Casper Star-Tribune delivers the latest education news, analysis, photos and trends from inside Wyoming's schools. We provide a look into the processes and studies that determine how the state's schools run today, and how education is changing moving forward. Stay informed with a subscription to the Casper Star-Tribune.

CASPER
Star  **Tribune**
COMMUNICATIONS
TRIB.COM/EDUCATION

Four Walls with a Future Inside...

It is an exciting time at Kelly Walsh High School as some 1,800 students begin to occupy and use a brand new facility! It's not every day a new high school is constructed, but this year we have three new high schools opening in Casper. The three facilities were constructed at the same time because the programs they offer are integrated to provide as much opportunity for Natrona County students as possible.

The students and faculty, since the original school opened in the fall of 1965, have fostered a learning environment where mutual respect and trust have played key roles in the culture at Kelly Walsh.

Brad Diller, who has been principal at the school for more than 20 years, is fond of saying Kelly Walsh is four walls with a future inside. But today, those four walls place the school's students and staff on the cutting edge of educational opportunity, and the design will facilitate progressive learning for the next 50 years.

The Kelly Walsh pool and auditorium are currently under renovation and will be incorporated into the new building. We appreciate the continued patience of the community and the neighborhoods around Kelly Walsh as the old high school buildings are demolished, and on-site parking is completed within the next year so.

In the following pages you will find a little of the history of the Kelly Walsh community, information on the new construction and a look at the classrooms and other facilities. It is genuinely exciting, and we are grateful for the opportunity to have planned and constructed the new Kelly Walsh High School building that we share with you in these pages today. Kelly Walsh continues to be four walls with a future inside, and at the same time it is a great demonstration of the innovation and forward thinking that is the future of education in Natrona County!

SOLID

FOUNDATIONS

“It’s not the bricks and concrete that make Kelly Walsh great. It’s the people that show up here every day,” says Brad Diller, long-time school principal. The comment reflects Diller’s deepest held values, and perhaps his recognition that the bricks and mortar of the old Kelly Walsh building were beginning to crumble.

KW was first built in the mid-1960s on clay soil. Heavy doses of spring precipitation – alternated with extended periods of limited moisture – conspired over time to cause the clay soils underlying the school to expand and contract, ultimately stressing the concrete foundation of the 50-year-old school. Expansive clay soils are prevalent in Casper, and many a building foundation has suffered. Engineering practice has improved with experience, and the new Kelly Walsh reflects this new understanding. More than 500 drilled concrete piers support the new structure. The foundation is comprised of a concrete pier centered every 15 to 20 feet, each about 24 inches in diameter and sunk about 20 feet deep down to bedrock, and reinforced with



Dave Applegate

bars of steel.

While the original building structure may have had shortcomings, the cultural foundations of Kelly Walsh have only solidified over time. At the 1965 dedication ceremony of the school, teacher S. Kelly Walsh, the school’s namesake, said “the school organization should fit the needs of the pupil ... I am

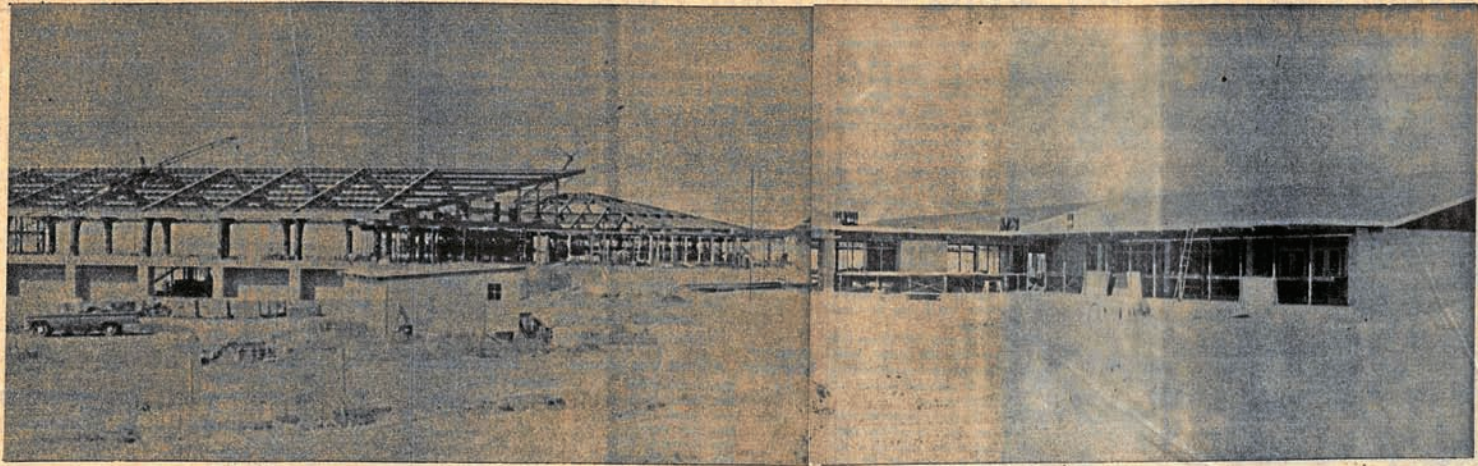
with those who believe it is the responsibility of society through the schools to help each child to understand and believe in his true worth.” The individual student focus continues today at KW as reflected in the school’s four cultural pillars and when students and staff speak the words “We are Kelly Walsh!” The three pillars of Academics, Ath-

letics and Activities represent the focus on showing up and staying involved. Inclusion and collaboration are at the heart of the last pillar, Acceptance.

The four pillars embody the caring culture that’s been reaffirmed over the last two decades at KW through the unique leadership style of Diller. It is not uncommon to see him in the hallways at KW giving students and staff a hard time, jesting and joking, encouraging them to be better, attaching a comedic nickname to everyone he meets. He is and has been a fixture at activities and athletic events for what seems like forever, and he brings a contagious attitude of positivity to the job each and every day.

Diller made a noteworthy decision in the early phases of new school construction to put two teachers on the design team for the building project: mild-mannered Dave Davis and always passionate Duane Reimer. Davis retired from teaching during the construction phase, but stayed involved throughout the project, while Reimer was eventually given the freedom by Diller to commit one class period a day to the new Kelly Walsh building

Casper Star-Tribune Sunday, Aug. 16, 1964



HIGH SCHOOL ON A HILL TOP: Casper's second high school, the Kelly Walsh, is taking shape rapidly on a hilltop at the east end of 12th Street, in the growing eastern additions to the city. At right, the entrance and cafeteria-auditorium on top of the hill is already enclosed, while at the left, the steel structure of the gymnasium and other units, hugging the hillside, is nearing completion. Students, beginning in 1965, will enter the complex at the entrance, then follow corridors to descending levels of other classrooms, the library, gym and other facilities. Camera points north-east.

CASPER STAR-TRIBUNE

design. Combining design savvy with a passion for the men and women of Troy, Reimer made a number of recommendations for the new building that reached back through the traditions of Kelly Walsh, while remaining firmly focused on creating the best teaching spaces possible for future staff and students.

The new school benefits from a spacious site and relatively few constraints in terms of the building footprint. Davis' and Reimer's focus was to work with quality architects and take an already exceptional design from great to better. Reimer's teaching specialty is computers, program-

ming and networks. He leveraged this knowledge and his working relationships with his fellow teachers into a detailed, deep dive into the building's network layout and design, informing the extent of blue network cabling in the building; the quantity and location of wired network locations; the digital bulletin board layout and selection; the classroom audio-visual specifications; and the gym lighting system design. The result is perhaps the best equipped and finest functioning school building in the region, as it relates to computer and digital media applications. If the structure could

speak, it might say, "This building is wired!"

If blue cable embodies Reimer's influence on function, it is his commitment to KW's legacy and spirit that best captures his contributions to form. Trojan and KW logos are embedded throughout the building, and none is more distinctive than the wood-stained Trojan head that lies at center-court of the new competition gym. The grand staircase into the commons area uses the old gym floor as wood inlay in the new stairs, while the Green Area – a small, worn carpeted area of the old building – is now denoted by durable green

tile that will certainly become a new meeting place for future students. Finally, whether it's the Walk of Fame from the new indoor track to the football fields, or the hexagonal lighting in the cafeteria that harks back to the hexagonal layout of the old KW courtyard and library, the new building is interlaced with elements of old meeting new, signifiers of legacy encountering the future. Built on solid foundations of structure, culture, commitment and leadership, decades from now students and staff will still be saying to the pleasure of its namesake, "We are Kelly Walsh!"

A new Casper high school

For more than half a century, there was only one high school in Casper. By the 1960s, the city's growing population demanded another school, and a group of teachers decided to strike out across town to start something new. From the beginning, a culture of inclusiveness thrived at Kelly Walsh High School, and administrators ever since have made it clear that the school is about the people rather than the building.

"A school should be a learning laboratory where the emphasis is on the growth and development of the individual. In this day of automation the school should concentrate on helping the individual retain his identity. At the risk of being misunderstood, I contend the school organization should fit the needs of the pupil rather than trying to make all of them alike. This requires a change in attitudes and objectives more than anything else. It will not come about until there is more mutual respect among us for people as people. I am with those who believe it is the responsibility of society through the schools to help each child to understand and believe in his true worth." – Kelly Walsh, at the dedication ceremony for the high school bearing his name, Nov. 8, 1965.

EVERYBODY COUNTS



KWHS HISTORICAL SOCIETY

Architects constructed a model of the school-to-be during the planning phase in 1963. The school's final form differed in several ways from the model, which included two additional wings on the north side of the building.

50 years at Kelly Walsh High School

1964

Building construction is in full swing throughout the year. School selects 'Kelly' green and white for colors and will be known as the Trojans

1960s

Plans come together for a new Casper high school

The Casper School Board was the biggest public spending body in Natrona County with a \$4 million budget. Members were: K.D. Knapp, William Muller, Tom Stroock (chairman), Mrs. Earl West, Dr. W. Hart, Charles Ayers and the county Superintendent of Schools, Mrs. Adria Davis.

1963

Architects Krusmark and Krusmark of Casper and Perkins and Will of Chicago, Ill., revise and complete plans for the first KWHS building, organized as pods around a central courtyard. The new school sported 149 classrooms with capacity for 1,253 students in 154,500 sq. feet.

1965-70

The school district builds more elementary and junior high schools as Casper continues to grow.

1965

75th Anniversary of Statehood observed statewide April 13, Masonic Lodge sets cornerstone



KWHS HISTORICAL SOCIETY

As the first principal of KWHS, William T. Sullins explained his vision for the school, "A building is brick, concrete, steel and wood. A school is spirit, friends, laughter, tears, traditions, pride, determination and heart. You are the ones who have put meaning and life into this school. Its future is guaranteed by the foundations you have set."

1965

First students attend classes in the fall, and the school is dedicated in November. School operated as a closed campus from 8:20 a.m. to 3:20 p.m., meaning students were not allowed to leave campus without parental permission.

Dress regulations established by the school board: Girls - white cotton blouse and black straight skirts.

Boys - regular or sport shirt, but not t-shirt or sweat shirt, with belted trousers worn no lower than the top of the hips.

1965-73

William T. Sullins serves as the first principal of KWHS.

1965

Construction is completed in June at a total cost of \$3,111,467.

1965

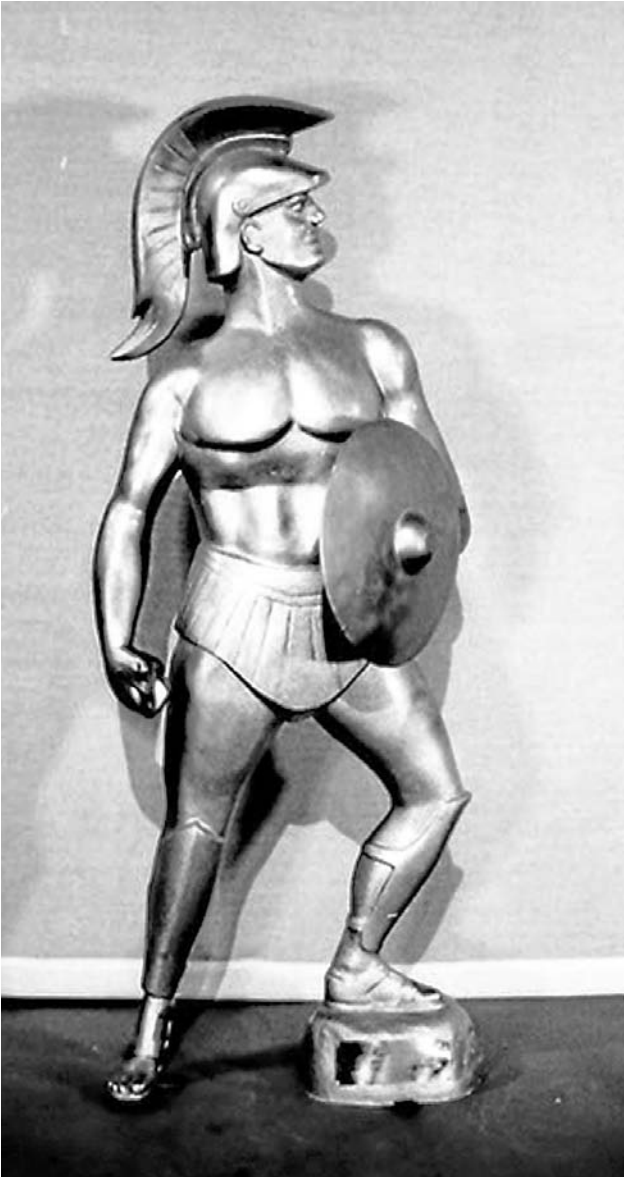
Minimum wage: \$1.25 per hour. 1/2 gallon of ice cream cost 75 cents, French bread cost 19 cents

1969

Mission commander Neil Armstrong and pilot Buzz Aldrin land the Apollo 11 lunar module "Eagle" on the moon, July 20

1970

Casper population is 39,361 residents



KWHS HISTORICAL SOCIETY PHOTOS

A crowd gathers to cheer on the Trojan football team in 1972.

This undated photo shows the golden Trojan statue that was created to honor KWHS alumni killed in the Vietnam War. The statue is always present at graduation ceremonies and will be permanently on display in the new building after the auditorium renovation is complete.

1973-78

Lowell L. Myers serves as the second principal of KWHS.

1974

Mineral severance tax legislation approved

1973

Military draft is officially ended. The U.S. withdraws most troops from Vietnam before the official end of the war in 1975.

1975

KW Journalism students capture top honors in three of four contests at State Journalism Weekend at Central Wyoming College in Riverton.



CASPER COLLEGE WESTERN HISTORY CENTER

Construction on the KWHS Harry Geldien Stadium finished in 1979, finally providing an updated facility for Trojan football, track, marching band and more.

1970-80

Innovative changes are integrated into the curriculum. The dress code and closed campus regulations are modified and smoking areas established outside the building.

1978-85

Paul Martin serves as the third principal of KWHS.

1976

Additions to the building are completed, including the auditorium, pool and vocational shops.

1979

Harry Geldien Stadium construction is completed.



CASPER COLLEGE WESTERN HISTORY CENTER

Runners from Buffalo and Jackson compete in a hurdle event in spring 1980, when KWHS hosted the state track meet for the first time after the completion of Harry Geldien Stadium. The event has brought high school competitors from around Wyoming to the school ever since.

1980

State track tournament is held at the new Harry Geldien Stadium

1982

A new shopping option, the Eastridge Mall, opens in Casper

1980

Census pegs Casper population at 51,016

1980

Price of crude oil peaks in the late spring



KWHS HISTORICAL SOCIETY

Teachers, administrators and other KWHS staff pose for a group photo in 1985.

1983

KWHS is named a
“School of Excellence”

1986-89

A steep fall in oil prices led a number of national oil companies to close their Casper offices; many houses and storefronts stood empty

1985-89

Gene Snider serves as the
fourth principal of KWHS



KWHS HISTORICAL SOCIETY

Students gather in part of the old building that became known as the “green area” in this undated photo. The simple, unofficial gathering space came to represent the school’s inclusive and open culture, prompting architects to include similar spaces in the new design.

- 1988**
Devastating fire in Yellowstone National Park burned more than 1 million acres.
 - 1989**
Discovery of asbestos in the KWHS building.
 - 1990**
Casper population falls to 46,742. State population is 453,588
 - 1990s**
Boom in coalbed methane drilling in northeastern Wyoming revitalized Casper’s drilling-services businesses
-
- 1989-95**
Joe Simpson serves as the fifth principal of KWHS.
 - 1990**
Wyoming Celebrates Centennial
 - 1990**
KW graduates spend their entire year at NCHS
 - 1995**
Wolves reintroduced in Yellowstone



CASPER COLLEGE WESTERN HISTORY CENTER

Patti Danielson talks to Stace Daigle while passing a “clean” chair from the library at KW in November 1989. They were employed by Asbestos Building Connections of Billings, Montana.



KWHS HISTORICAL SOCIETY



CASPER COLLEGE WESTERN HISTORY CENTER

Administrators tour the KWHS library renovation in August 1990, just before students return to school after the year of asbestos cleanup.

An asbestos contamination forced the temporary closure of KWHS in 1989. “A Brief History of Kelly Walsh High School” recorded the peculiar school year: “In August of 1989, Kelly Walsh was closed due to asbestos contamination. The entire 1989-90 school term was spent at Natrona County High School. The two high schools were on split schedules with the NCHS classes from 7:00 a.m. to 12:00 p.m. and KWHS classes in session from 12:45 to 5:45 p.m. ‘We’re doing asbestos we can’ t-shirts were worn by KW staff

members and ‘We’re helping asbestos we can’ t-shirts were popular with the NC staff.

The 1990 KW graduates spent their entire senior year at NCHS.”

It’s not the discovery of asbestos or the expensive cleanup that’s worth remembering, but rather the positivity with which the students and staff of Kelly Walsh handled the difficult situation. The year away from their home campus offered further credence to the idea that the school is not the building, but the people.



KWHS HISTORICAL SOCIETY

Many familiar faces can be spotted in this undated photo of a group of KWHS coaches, including now-principal Brad Diller in the front right.

“It’s not the bricks and concrete that make Kelly Walsh great. It’s the people that show up here everyday.” - Principal Brad Diller

COURTESY PHOTO

1995
Auxiliary gym construction is finished

2000
Dick Cheney elected Vice President of the United States

2009
Wyoming ranked as fastest growing state

1995
Brad Diller begins serving as the sixth principal of KWHS. He still serves as the principal today

2002
Legislature creates the School Facilities Commission, providing state control of school construction for the first time in the state’s history

2010
“Cowboy Ethics” new official state code



KWHS HISTORICAL SOCIETY

Students gather in the gymnasium for Rodstock 2015.

Rodstock, an all day music festival, became a school-wide celebration of acceptance in 2009. In place for many years previous, it had outgrown classrooms and moved to the auditorium where more than 600 students could attend.

The event outgrew even the auditorium in a few years time and moved to the main gym.

Faculty and students perform each year in the festival, showcasing talents not typically seen in the classroom. Rodstock has also functioned as a fundraiser, and over the past three years, more than \$60,000 has been collected for the Make-A-Wish Foundation, which directly benefits children in our community.



COURTESY PHOTO

Rod Mahaffey, left, and Brad Diller pose for a photo during Rodstock 2015. Mahaffey, a former KWHS English teacher, is the creator of the festival.



KWHS HISTORICAL SOCIETY

Tom Staffileno, right, walks with Kevin Williams during a football game in this undated photo. The newly constructed KWHS Tom Staffileno Sports Complex was named to honor the legacy left by the beloved teacher and coach. He died in 2009 after battling cancer.

2008

Oil hits another peak before rapidly sliding

2011

Construction is completed on the Tom Staffileno Sports Complex soccer fields, with additional facilities planned. All are made available for community use

2005

KWHS celebrates 40-year anniversary

2009

After a small beginning, Rodstock becomes a school-wide event



DAN CEPEDA, STAR-TRIBUNE

Kelly Walsh High School Principal Brad Diller talks to guests and media at a ceremonial groundbreaking on the site of the new KWHS building on July 30, 2013.



A crane hoists the new building's final steel beam into place, decorated in school spirit and signed by students, staff and construction workers, on April 22, 2015.

KWHS HISTORICAL SOCIETY



DAN CEPEDA, STAR-TRIBUNE

With construction completed, the new Kelly Walsh building opened to students for the fall semester of 2016. Wood is used throughout the new facility to warm its modern design.

2015

KWHS holds a “topping off” ceremony to celebrate the placement of the final beam in the new construction.

2016

Construction continues through the summer

2013

Groundbreaking ceremony officially kicks off construction of the new building.

2015

KWHS celebrates 50-year anniversary as new construction progresses.

2016

The building is ready for students on the first day of school, August 31



DAN CEPEDA, STAR-TRIBUNE

Unicycles lean up against walls at the new Kelly Walsh High School in Casper. The unicycle club is just one of multiple school activities offered at KWHS.

FACTS & STATS

Kelly Walsh High School

3500 E. 12th St., Casper, WY

Capital Cost:

Main Building

Design: \$5,300,122

Construction State-Funded: \$80,236,982

Construction NCSF-Funded: \$6,378,484 (includes enhanced gym and lower level PE/Running track, enlarged Career & Technical Education spaces, enlarged commons, enhanced Furniture, Fixtures, & Equipment)

Pool Building

State-Funded: \$326,390 (infrastructure)

NCSF-Funded: \$5,875,644

Total NCSF-Funded amount on KWHS campus:
\$12,254,128



The KWHS Trojan mascot is in the center of the commons area at the new KWHS building in Casper. The seating areas allow students and staff to work together and visit.

Architect:

Main Building

RB+B Architects, Fort Collins, CO and Amundsen Associates, Casper, WY

General Contractor: Sampson Construction Co., Inc., Cheyenne, WY

Timeline:

March 2012—Appropriation of funding

February 2013—Architecture contract signed

September 2013—Construction begins on-site

August 2016—Completion of construction (excluding theater and music wing)

Fall 2016—Planned completion of theater

Summer 2017—Planned completion of new music wing

Summer 2018—Planned completion of entire project (all parking lots and landscaping)

Square Footage

335,685 sq. ft. - 1,574 student capacity

Interesting Facts:

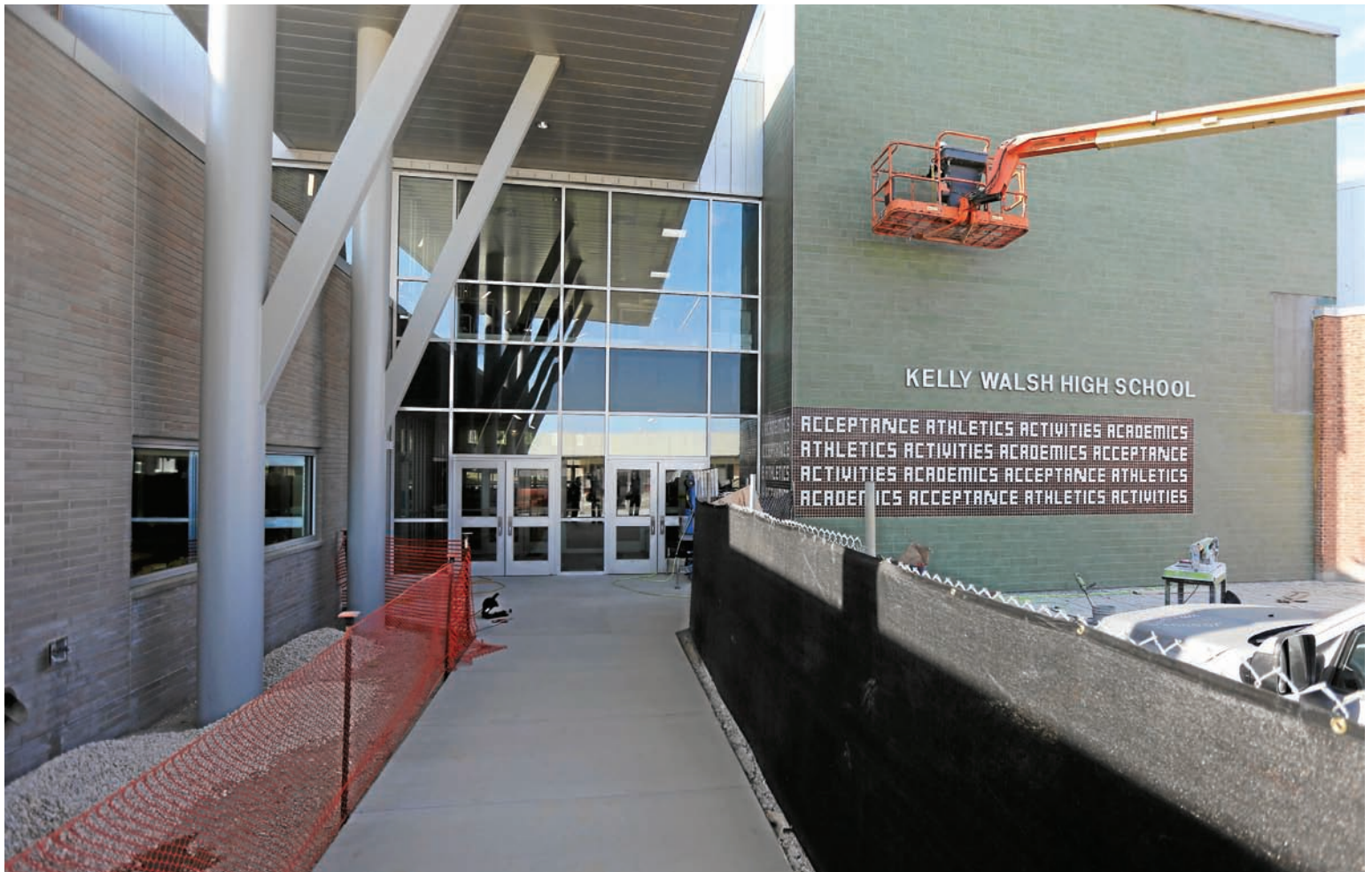
- There is an estimated 10,589 cubic yards of concrete in the new KWHS - enough concrete to pour a 4-foot wide, 4-inch thick sidewalk from KWHS to Douglas
- Concrete sidewalks: 136,934 sq. ft. (1,859 cubic yards)
- Asphalt parking lots: 303,870 sq. ft.
- Landscaped area: 431,493 sq. ft., equivalent to 7.5 football fields
- Drilled piers: 550 piers utilizing 1,225 cubic yards of concrete in 10,259 total feet of depth.

- Beams and columns: 2,371 beams and columns (2,190,000 lbs, or 1,096 tons)
- 17,700 bolts
- 650 gallons of primer
- 6,572 pieces of joist
- 698,000 lbs (349 tons) of decking
- 79,157 feet of steel used
- 10,690 shear studs used
- Reinforced steel in foundation walls: 220,000 lbs (110 tons)
- Doors: 468
- Windows: 495 exterior windows
- Cabinets: 3,456 feet
- Drywall: 437,897 square feet (13,680 4x8 sheets)



DAN CEPEDA, STAR-TRIBUNE

The "Kelly Walsh High School" inscription was removed from the original building and incorporated in a wall along Walsh Dr. where bus pick up and drop off will take place.



DAN CEPEDA, STAR-TRIBUNE

Workers finish the facade of what will be the new KWHS main entrance. The original KWHS is still being demolished in the lot facing the new building.

Special thanks and recognition to all Kelly Walsh High School affiliates and contractors on site

- RB+B Architects
- Amundsen Associates
- Lower & CO
- Engineering Design Associates (EDA)
- WLC
- NV5
- Kelly Walsh High School Staff
- Natrona County School District Board of Trustees
- City of Casper
- Wyoming School Facilities Department
- Ace Equipment & Supply Company
- ADP Lemco, Inc.
- Advanced Exercise Equipment
- AIA Industries, Inc.
- API
- Architectural Glazing Contractors
- Beynon Sports Surfaces, Inc.
- Big Horn Roofing, Inc.
- Brundage-Bone Concrete Pumping, Inc.
- Casper Electric, Inc.
- C.H.I. Companies
- Colorado Specialties
- Colton, Inc.
- Consurco
- Dakota Sealants, Inc.
- Doors & Hardware Unlimited, Inc.
- E.B. Eames Co., Inc.
- Elk Horn Insulation
- Grazzini Brothers & Company
- Jack Daniels/Phaze Concrete
- Johnson Brothers Plaining Mill, Inc.
- Johnson Controls
- Johnson-Lancaster
- KK Mechanical
- KONE, Inc.
- Mato Insulation
- McMurry Ready-Mix
- Michael's Construction, Inc.
- Morning Star Elevator, LLC
- National Coatings, Inc.
- Norcon of New Mexico
- North Star HVAC
- Oasis Stage Werks, Inc.
- OHD of Casper
- Pepper Tank
- Pole-Tech Co., Inc.
- Powers Built Structures
- Professional Flooring & Supply
- Pro-Build
- Ramshorn Construction, Inc.
- Redline Custom Concrete & Flatwork
- S/D, Inc.
- Sampson Construction Co.
- Shelf Image, Inc.
- Site Work, Inc.
- Skylight Specialties
- Soderberg Masonry, Inc.
- Southam & Associates, Inc.
- Sportsfield Specialties
- SRB Acoustics
- Standard Drywall, Inc.
- Teton Steel Company
- TMI Storage Systems Corp.
- Wegner Corp.
- Western Slope Iron & Supply
- Western States Fire Protection Co.



DAN CEPEDA, STAR-TRIBUNE

Students sit in one of several common areas placed around the new KWHs building. These areas can also be utilized by classroom teachers to help students build collaboration skills.



DAN CEPEDA, STAR-TRIBUNE

Teachers are given permanent desk space since classrooms are shared similar to a university model. The offices allow teachers to collaborate during common planning periods.




In the video production room at KWHS, students will work on state-of-the-art equipment to produce Trojan TV as well as individual short movies they submit to festivals each spring.


DAN CEPEDA, STAR-TRIBUNE

Congratulations


KELLY WALSH



TROJANS



Paying It Forward



McMurry Foundation

307-261-9953

www.mcmurryfoundation.org




MOUNTAIN PLAZA
ASSISTED LIVING and MEMORY CARE

4154 Talon Drive • Casper, WY 82604
307.232.0100
www.mountainplazaassistedliving.com



DAN CEPEDA, STAR-TRIBUNE

A physical science classroom features a built in motion bar to aid in science experiments. Many of the classrooms have technical enhancements to prepare students for the 21st-century world.

Classrooms for electives such as robotics were designed to allow passing students to see inside from the halls to heighten awareness of less traditional education opportunities available at KWHS.

DAN CEPEDA, STAR-TRIBUNE



Congratulations!

KWHS

On the completion of your facility



Specializing in residential garage doors and operators, as well as commercial garage doors and operators, including fire doors and security grilles



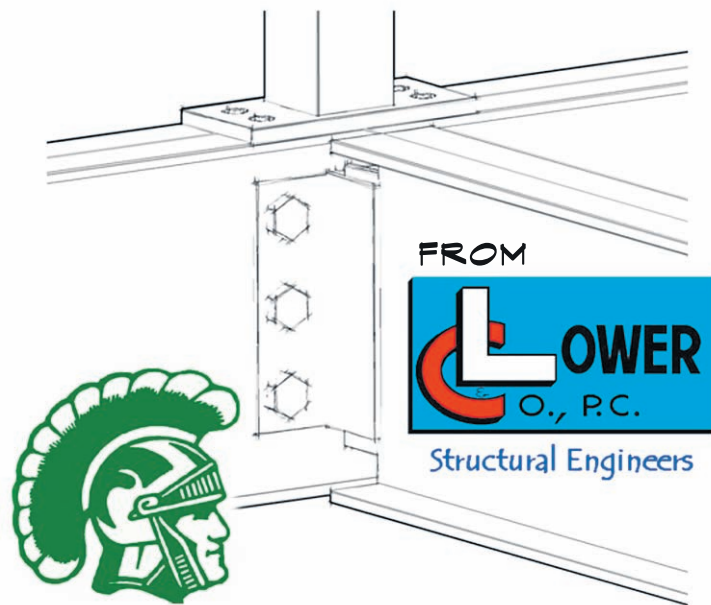
OVERHEAD DOOR COMPANY OF CASPER, INC.

2760 Fleetwood Place, Casper, WY 82604

307-266-1440 • 800-371-6614

www.ohdcasper.com

**CONGRATULATIONS
ON YOUR NEW
SCHOOL**





DAN CEPEDA, STAR-TRIBUNE

A temporary room has been set up for music classes while permanent space for performing arts instruction is renovated in the final phases of construction at KWHS. This room will eventually be fitted with permanent seating for use as lecture space.

Natural lighting along with wood walls create an inviting atmosphere in a hallway at the new KWHS building.

DAN CEPEDA, STAR-TRIBUNE



Congratulations on the new facility and good luck in the coming school year!

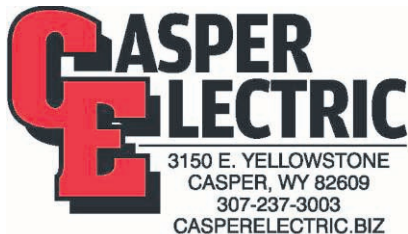
A Homegrown Company serving your electrical needs since 1984.

Your technical career awaits!

LICENSED

BONDED

INSURED



Congratulations!

KWHS



Wyoming's premier commercial glazing contractors. Specializing in aluminum storefronts and entrances, curtain wall, sunshades, translucent panels, and automatic doors.



2760 Fleetwood Place, Casper, WY 82604

307-266-1440

800-371-6614

www.agcwyo.com



DAN CEPEDA, STAR-TRIBUNE

Seating areas for students to gather are placed around the new building. A glass classroom allows students to study together and work on projects, such as science experiments.

The cornerstone of the original KWHS was preserved and will be fitted along side a new cornerstone during the final phase of construction.

DAN CEPEDA, STAR-TRIBUNE



High school students:

Earn college credit at Casper College through ACE (Accelerated College Education). Get a jump start on your college degree and even earn credits towards graduation with ACE, powered by BOCES.

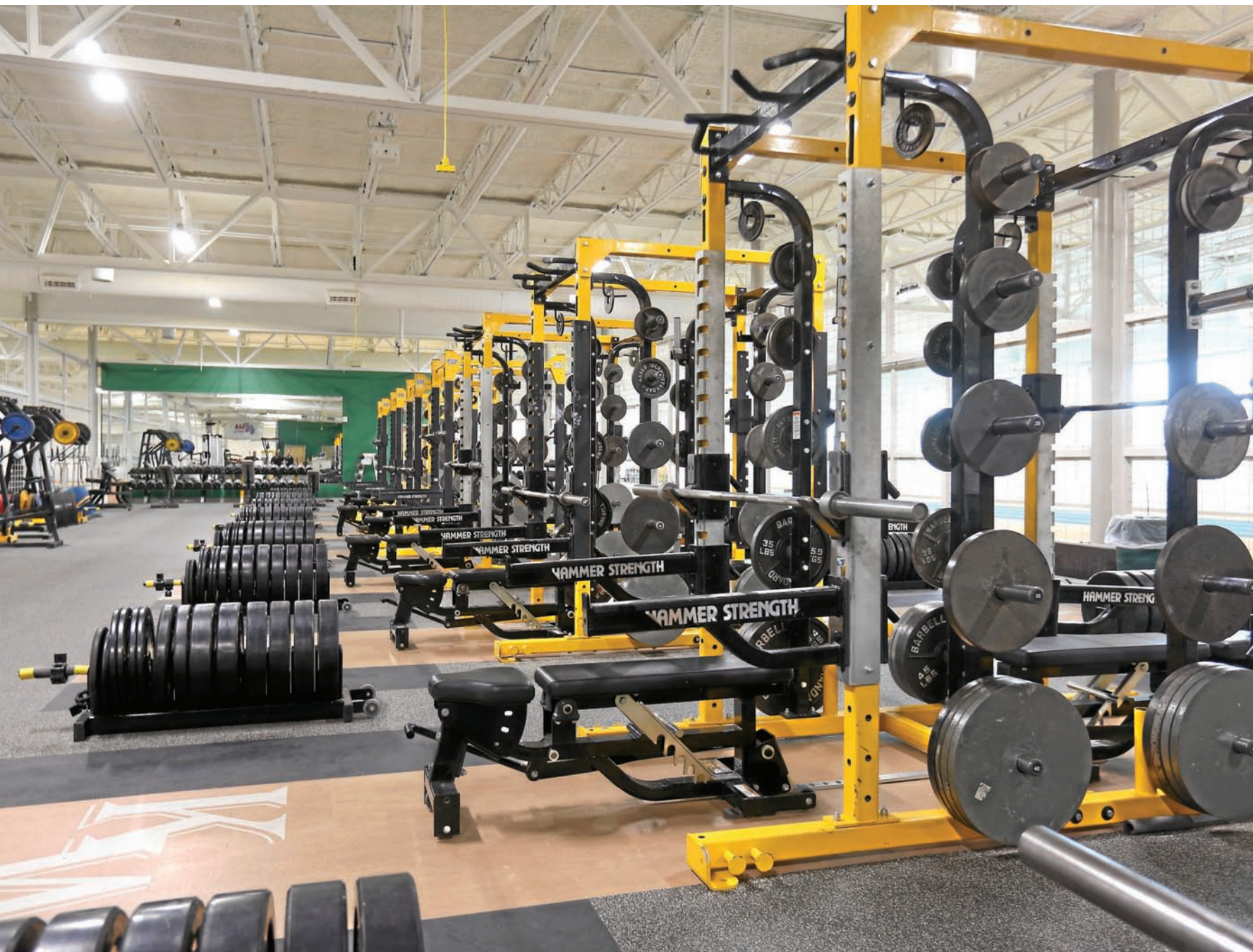
.....
For more information about ACE, powered by BOCES, see your high school guidance counselor or call BOCES Program Manager Jeana Lam-Pickett at 307-268-3309 or visit caspercollege.edu/BOCES

Earn
college credits.
BOCES
pays
for your tuition
and books!



BOCES ACE

DUAL AND CONCURRENT ENROLLMENT PROGRAM



DAN CEPEDA, STAR-TRIBUNE

The new weight room at KWHs is surrounded by a new indoor track that provides students access to year round exercise.

The football from the very first KW Oil Bowl victory lives among other trophies from the past at KWHS.

**DAN CEPEDA,
STAR-TRIBUNE**



CY Middle School
Summit Elementary School
Kelly Walsh High School
Capacity Elementary School

RBB
ARCHITECTS

Celebrating a 10-year partnership with Natrona County School District & the Casper community.

KELLY WALSH HIGH SCHOOL

© 2016 RBB ARCHITECTS. ALL RIGHTS RESERVED. THIS IMAGE IS A REPRESENTATION OF A DESIGN AND NOT A CONTRACT. THE DESIGN IS SUBJECT TO CHANGE WITHOUT NOTICE. THE DESIGN IS NOT TO BE USED FOR ANY OTHER PURPOSES WITHOUT THE WRITTEN PERMISSION OF RBB ARCHITECTS.

rbbarchitects.com

*Congratulations Kelly Walsh on your new school!
We are proud to have served as the Associate
Architect for your new building.*

AMUNDSEN
ASSOCIATES

ARCHITECTURE • PLANNING • INTERIOR DESIGN
212 East 2nd Street Casper, Wyoming 82601



DAN CEPEDA, STAR-TRIBUNE

The new library and media room at KWHS provides nearly 15,000 books geared towards students' needs and interests.



DAN CEPEDA, STAR-TRIBUNE

The new competition gym at KWHS seats 2,200 people, which is enough to hold the entire student body, faculty and staff.



DAN CEPEDA, STAR-TRIBUNE

One of 12 flexible classrooms at the new KWHS in Casper. The design allows sections of students to split off for group work without interfering with the main class.

THANK YOU

*Natrona County School District #1 for using Engineering Design Associates
in the Construction and Design of Your Exceptional New School!*



1607 CY AVE #303 • CASPER, WY 82604 • (307) 266-5033 • WWW.EDAENGINEERING.COM



DAN CEPEDA, STAR-TRIBUNE

Sections of the original KWHS gym floor were preserved and used to surface a new commons/presentation/gathering area. Many alumni that toured the new building this summer reminisced about memories created on the old gym floor.



DAN CEPEDA, STAR-TRIBUNE

The “green area” upstairs and downstairs pays homage to a section of the original KWHS building with green carpet where students traditionally congregated between and after classes. The old building’s shabby green carpet has been replaced with green tile and plenty of seating.



DAN CEPEDA, STAR-TRIBUNE

The hexagon lights on the ceiling of the commons area of the new KWHs school building pay homage to the original building's design elements.

Looking Forward...

Thank you for exploring this celebration of Kelly Walsh High School's past, present and future. It's easy to see why we are excited for the potential of education in Natrona County. The facility is designed to engage a broad spectrum of students in activities they see as relevant to their current lives, and to provide opportunities for them to complete their high school education prepared for a productive career, whether in college, industry or someplace in between.

It's interesting to note that a student's new opportunities do not begin or end at the new Kelly Walsh High School building. Kelly Walsh is part of the district's academy system that allows students interested in an academy of study, including a variety of professional, service and vocational studies, to attend half days at their home school, and half at the newly constructed Pathways Innovation Center in west Casper. The academies offer a truly diverse range of new studies to augment the opportunities of every Natrona County junior or senior student. These are not options that were available until this year!

And there is another bonus; because students attend half days at their home school and half at the academy, facilities like Kelly Walsh can accommodate more students than typical school settings. For example, the official Kelly Walsh capacity is 1,574 students. But some 1,800 students can call Kelly Walsh their home school this year because at any one moment, about 300 students are at the PIC academy. It's an effective system where all students have better access to the tools they need to create a personally relevant course of study.

The new KWHS building was designed with an eye towards the future. The technology incorporated throughout the construction is significant today, and the building is ready to accommodate whatever may be the technology of tomorrow.

As we look to the future, we are proud of the good work that has been done and all that has been accomplished for students over the years, and we are thrilled to offer Kelly Walsh High School as a great example of the bright future of educational opportunity in Natrona County!

Last But Not Least...

Thank you to the Natrona County School Board, school administrators, teachers, parents, community members and hundreds of construction workers and businesses who put in many years of hard work. The Wyoming Legislature and both the School Facilities commission and department deserve credit for their willingness to fund this project. Thank you also to the coal industry, for paying coal lease bonuses for many years so the state of Wyoming had the money to fund school construction in the first place.

Thank you to the staff at Kelly Walsh who participated in this telling of the school's past, present and future, particularly Marc Fleming and Duane Reimer, and also to Vince Crolla at the Western History Center at Casper College for his many contributions to the KWHS timeline. This celebration of KWHS was collected and edited by Collin Rudkin and Dale Bohren and published by the Casper Star-Tribune in collaboration with the Natrona County School District.

“We certainly want every student to receive a diploma, but we also want every student to receive the greatest possible education they can.”

– Superintendent of Natrona County Schools, Steve Hopkins



50
STATES **& 90**
COUNTRIES



15:1
STUDENT-TO-FACULTY
RATIO

250+
RECOGNIZED STUDENT
ORGANIZATIONS
& CLUBS



UNDERGRADUATE
RESEARCH
HANDS-ON WORK WITH FACULTY

STUDY
ABROAD



UNIVERSITY
OF WYOMING
GO FOR GOLD
uwyo.edu

Congratulations



Special *Thanks* to:



MOA ARCHITECTURE

We are proud
to have been
a part of this
EXCITING
educational
facility
for Casper and
Wyoming!

An Original
Wyoming Construction Company
- Since 1954 -



www.groathouse.com

Thank you for your work:

Advanced Wall Systems, Inc.
Alco Fence, Inc.
Apex Steel of Montana
Avani Environmental Intl.
Bailey Pottery Equipment Corp.
Barbizon Lighting of the Rockies
Big Horn Roofing, Inc.
Canter & Associates
Casper Electric, Inc.
Commercial Flooring, Inc.
Commercial Kitchen Supply
Connely's Scenic Landscaping
Cosney Corporation
Dakota Fence
Division Seven Services
Doorways of Wyoming
Elco Drilling Co., Inc.
Epoxy Systems/ADH Ventures, Inc.
G.R. Marolt & Associates
Golder Acoustics, Inc.
GW Mechanical, Inc.
Global Finishing Solutions
Hufcor, Inc.
JP Steel
Juarez Hardwood Flooring
KI Wall/Kreuger International

Knife River, Inc.
KONE, Inc.
Miller Wall Co.
Moore Foam Systems
National Coatings, Inc.
Overhead Door of Casper
Pacific NW Contractors
Pepper Tank Contracting
Powers-Products
Performance Surfaces, LLC
Rapid Fire Protection, Inc.
Rolling Plains Construction
S/D, Inc.
S2M Construction Co., Inc.
Schrader Metal and Design, Inc.
Sheet Metal Specialties
Sports Con, LLC
Stone Touch, Inc.
Superior Industrial Supply
Teton Steel Co.
TMI Storage Systems Corp.
Turner Draperies and Interiors
Two Mountain Construction
Whited Floor Surfacing Co.
Wood-wise Custom Cabinets
Wright Masonry