

What's New in BLOX CMS

TN TownNews

Thursday, June 6th, 2019

Today's agenda



- Update a large selection of assets
- Create dynamic, trackable text buttons
- New map alternative, no credit card required
- ... and more!

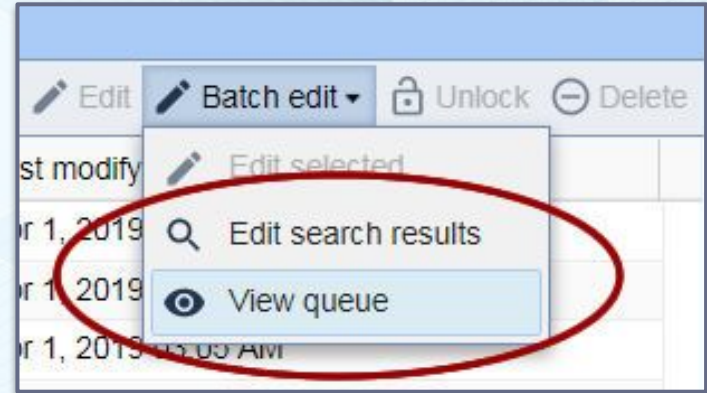


The background of the slide is a solid teal color. It features faint, stylized mechanical gear patterns in a lighter shade of teal. These gears are of various sizes and are positioned in the upper and lower portions of the slide, creating a technical or industrial aesthetic. A dark blue horizontal band runs across the middle of the slide, serving as a backdrop for the title text.

Super Batch Processing

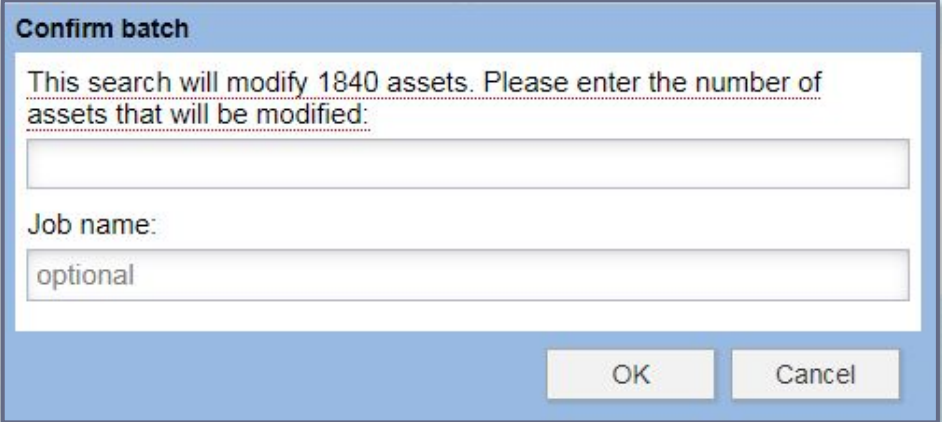
New panel under “Batch edit”

- Edit search results including unlimited number of assets
- One process allowed at a time
- Run larger batch edits off-hours
- Completion email sent to user



Confirmation required

- User must enter the number of affected assets to proceed
- Add a “Job name” for easier tracking in the job queue

A screenshot of a 'Confirm batch' dialog box. The dialog has a blue title bar with the text 'Confirm batch'. The main area is white and contains the text 'This search will modify 1840 assets. Please enter the number of assets that will be modified:' followed by a text input field. Below this is the label 'Job name:' followed by another text input field containing the word 'optional'. At the bottom right of the dialog are two buttons: 'OK' and 'Cancel'.

Confirm batch

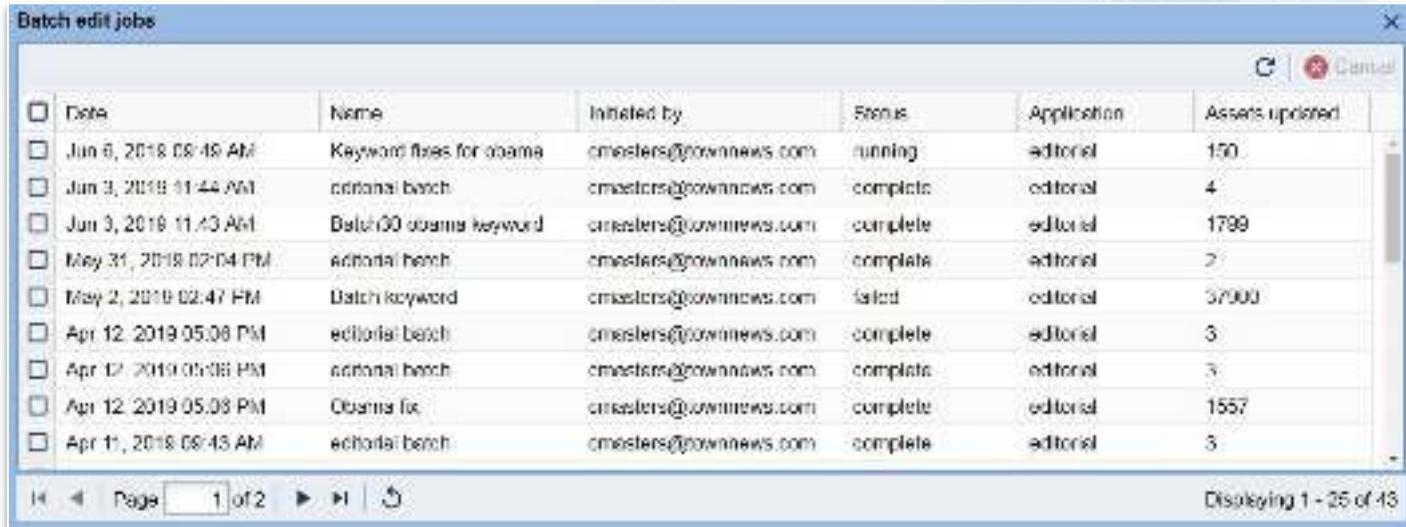
This search will modify 1840 assets. Please enter the number of assets that will be modified:

Job name:

OK Cancel

View and cancel in the jobs queue

- Refresh button will update numbers and status
- Records the user who requested the task



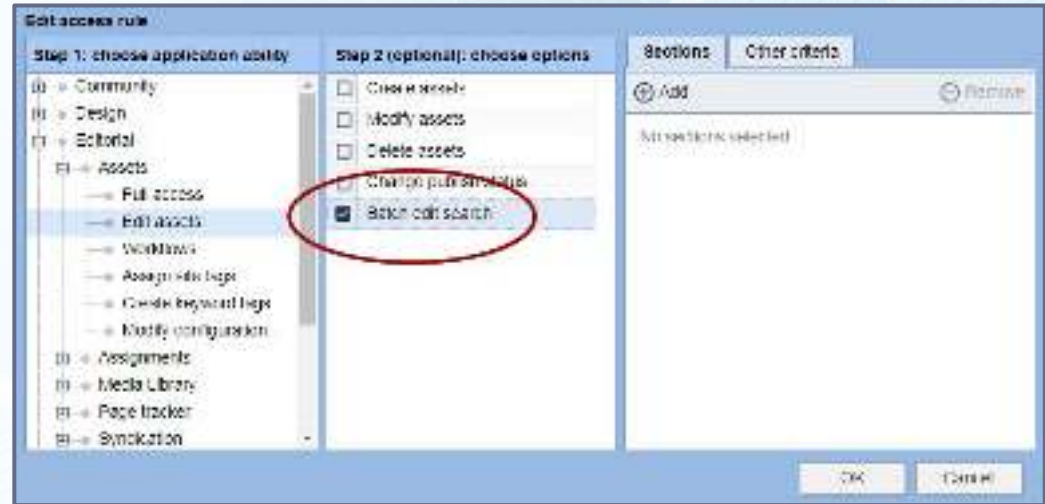
<input type="checkbox"/>	Date	Name	Initiated by	Status	Application	Assets updated
<input type="checkbox"/>	Jun 6, 2018 08:48 AM	Keyword fixes for obama	cmasters@ownnews.com	running	editorial	150
<input type="checkbox"/>	Jun 3, 2018 11:44 AM	editorial batch	cmasters@ownnews.com	complete	editorial	4
<input type="checkbox"/>	Jun 3, 2018 11:43 AM	Batch 00 obama keyword	cmasters@ownnews.com	complete	editorial	1799
<input type="checkbox"/>	May 31, 2018 02:04 PM	editorial batch	cmasters@ownnews.com	complete	editorial	2
<input type="checkbox"/>	May 2, 2018 02:47 PM	Batch keyword	cmasters@ownnews.com	failed	editorial	37900
<input type="checkbox"/>	Apr 12, 2018 05:08 PM	editorial batch	cmasters@ownnews.com	complete	editorial	3
<input type="checkbox"/>	Apr 12, 2018 05:08 PM	editorial batch	cmasters@ownnews.com	complete	editorial	3
<input type="checkbox"/>	Apr 12, 2018 05:08 PM	Obama fix	cmasters@ownnews.com	complete	editorial	1557
<input type="checkbox"/>	Apr 11, 2018 08:43 AM	editorial batch	cmasters@ownnews.com	complete	editorial	3

Page 1 of 2

Displaying 1 - 25 of 43

Access rules for batch edit search

- New permission required for group admin accounts
- Full administrators get automatic access



The background of the slide is a solid teal color. It features faint, stylized mechanical gear patterns in a lighter shade of teal. These patterns are distributed across the slide, with some gears appearing more prominent than others. The gears have various teeth and circular components, giving the background a technical or industrial feel.

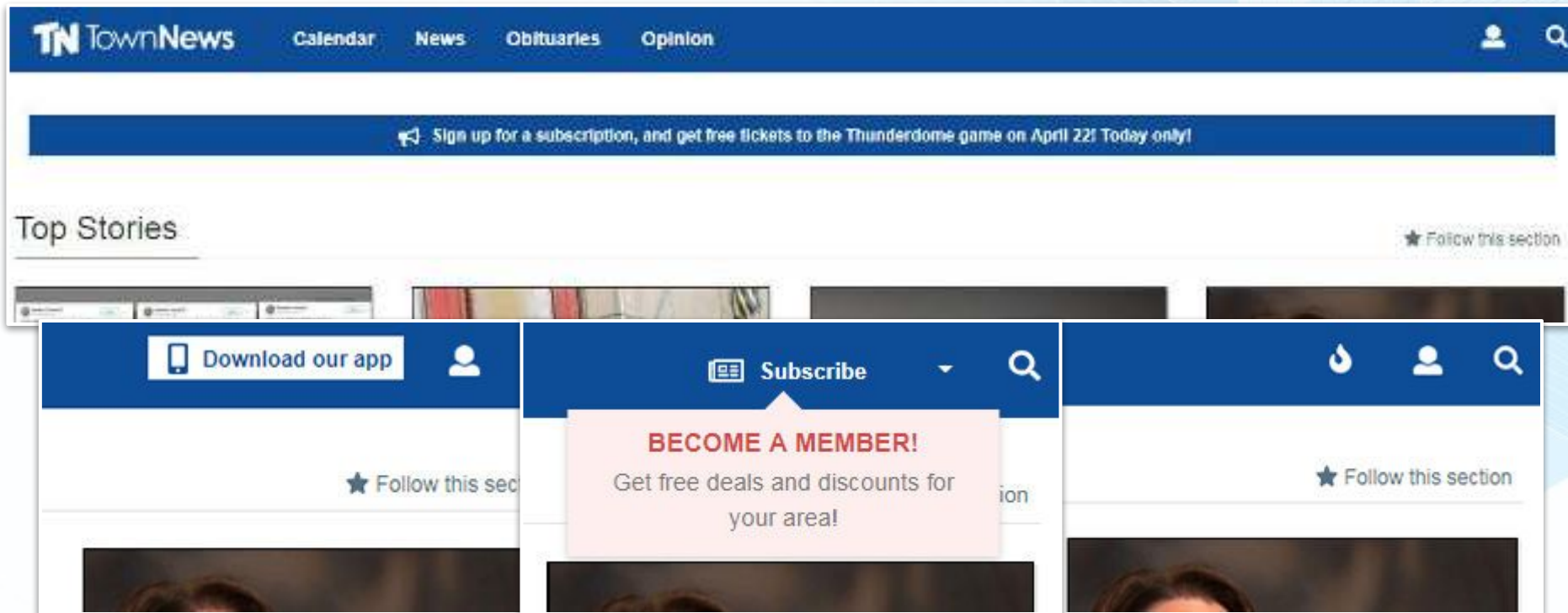
Utility: Promo Button

Dynamic, trackable text buttons

- Related to the “Utility: Promo Designer”
- Create buttons, links and icons with tooltips
- Works with iQ Engage audience tracking
- UTM tracking to gauge effectiveness



Variety of design options



The background of the slide is a dark blue gradient with a technical drawing overlay. The drawing features various mechanical components, including gears, shafts, and flanges, rendered in a lighter blue color. The text "Additional new features" is centered in a white, bold, sans-serif font.

Additional new features

New robots.txt management

- Old settings panel was removed
- New choices for:
 - Allow archiving (default off)
 - Prevent indexing (default off)
- Configuration inherits down
- Existing files will migrate on release of new software



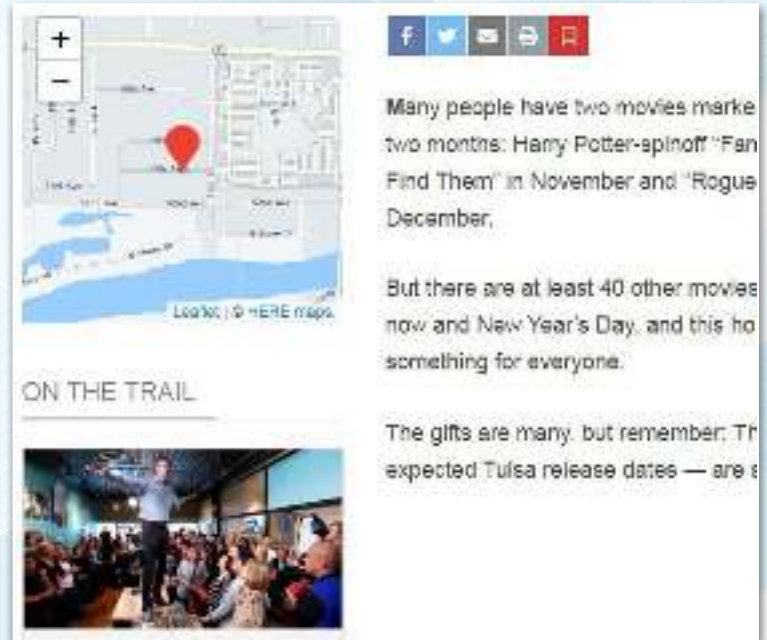
The screenshot shows the 'Edit URL map' dialog box with the 'Page properties' tab selected. The 'Additional options' section contains three checkboxes: 'Require HTTPS', 'Allow archiving', and 'Prevent indexing'. A red circle highlights the 'Allow archiving' and 'Prevent indexing' options, and a red arrow points to the 'Allow archiving' checkbox.

Field	Value
Page title	Home
Label	
Description	
Keywords	
Priority	0.5
Change frequency	weekly
Additional options	<ul style="list-style-type: none"><input type="checkbox"/> Require HTTPS<input type="checkbox"/> Allow archiving<input type="checkbox"/> Prevent indexing

Buttons: Save changes, Cancel

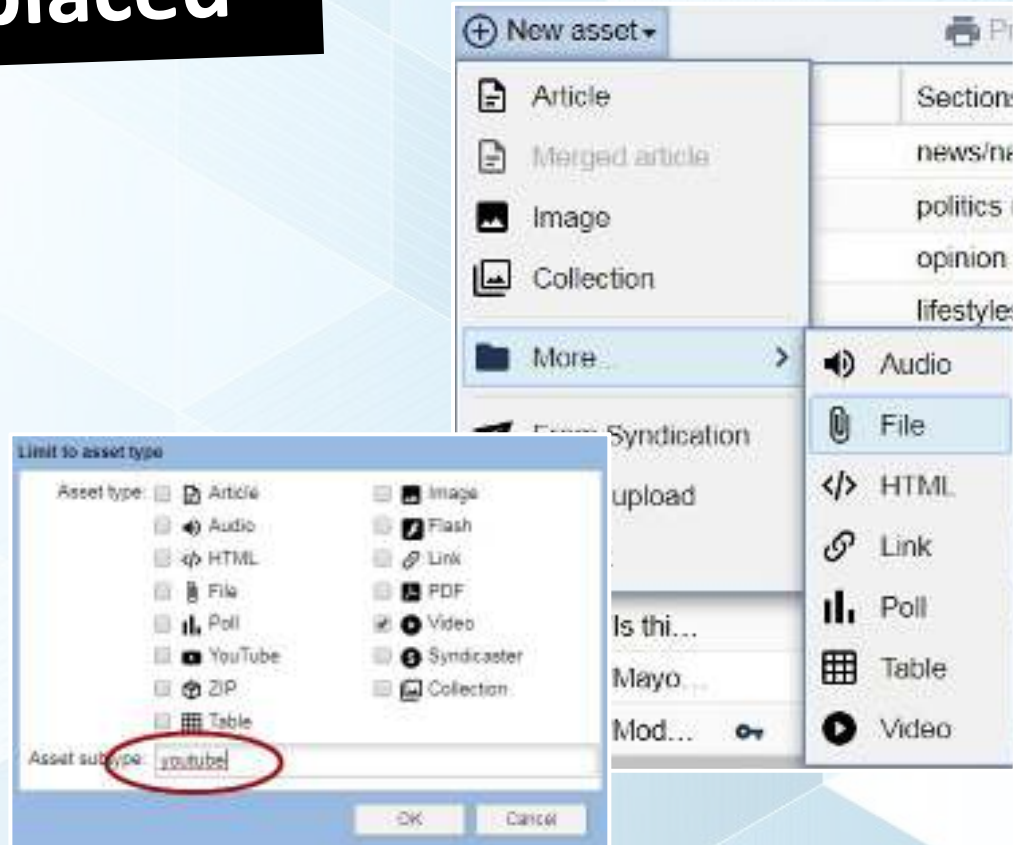
New map alternative

- From HERE Technologies
- Does not require a credit card to create an account
- API limit of 250k transactions per month
- HERE will be used to render maps when both API keys used



Some asset types replaced

- New asset types replace existing ones:
 - PDF, Zip, Flash replaced with File asset
 - YouTube asset replaced by Video asset
- “Subtype” capability



Now App Headline card

- Choose between “feature” cards and “headline” cards
- Alternate blocks to create a sectioned look
- Works in asset_feed
- Ads show at same interval



Programmatic Ads for BLOX Email Reach

- Partnering with PowerInbox
- Built to specifically work within BLOX CMS
- New block will create ad units of various sizes: Leaderboards, Medium rectangles, and Skyscrapers



The background of the slide is a solid teal color. It features faint, stylized mechanical gear patterns in a lighter shade of teal. These patterns are distributed across the slide, with a large gear visible in the upper right and another in the lower right. The word "Questions?" is centered in the middle of the slide.

Questions?

Stay connected

- Documentation: help.bloxcms.com
- Support: Call 800-293-9576 or visit support.townnews.com
- Partner Community: community.townnews.com
- Service Status: townnews.status.io
- Follow us on Twitter, LinkedIn, Facebook, YouTube



The background of the slide is a solid teal color. It features faint, stylized mechanical gear patterns in a lighter shade of teal. These patterns are distributed across the slide, with some gears appearing more prominent than others. The gears have various teeth and circular components, giving the background a technical or industrial feel.

Thank you!