



RE/MAX First



18 North Main St., Mansfield, PA 16933 • 570.662.2200

Scott Bastian, Broker • mansfieldremax@yahoo.com

Check Out Our Listings Online At <http://www.twintiersrealty.com>

Each Office Independently Owned & Operated

LAND LISTINGS

#W133256 – Wellsboro – 45+/- Acres - \$99,900

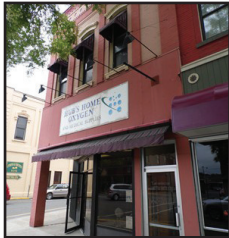
#W133673 – Ulster – 13+/- Acres w/OGMs - \$75,000

#W133433 – Lawrenceville – 30+/- Acres - \$119,900



Motivated Seller! 2007 construction, 2688 SF, 4-5BR w/possible in-law suite, 3.5 baths, modern kitchen w/SS appliances, outdoor kitchen, Master Suite w/large walk-in closet & whirlpool tub, covered porch, large

bsmt w/2 car garage, 40x60 pole barn, chicken coop, 2 sheds, pond, 98+/- acres of hay fields, potential timber, & 6 pastures w/individual water sources, **\$424,900 - #W134250**



For Lease! Comfortable & spacious apartment offering 1BR, 1 bath, beautiful new kitchen, washer/dryer hook-ups, convenient location, partial utilities included, no smokers, no pets, **\$750/Month - #W131530**



rounded by local & national retail stores, offices, food chains, etc., great for selling sheds, plants, vegetables, outdoor furniture, & more! **\$1,200/Month - #W134203**

Commercial Lease!

Great location for this lot w/high visibility on Bus. RT15 between Wal-Mart & the I99/RT15 Interchange, small office building w/restroom, sur-



Spectacular Views! Enjoy the hilltop setting for this unique home or retreat w/2BR, 1-1/2 baths, Cherry cabinets in kitchen, breakfast room, stunning woodwork & fireplace, NG/radiant heat, central vac, wrap-around deck, new roof in 2020, det. efficiency apartment

w/att. 1 car & 2 car garages, newly graveled driveway, 78+/- acres, come take a look! **\$310,000 - #W134221**