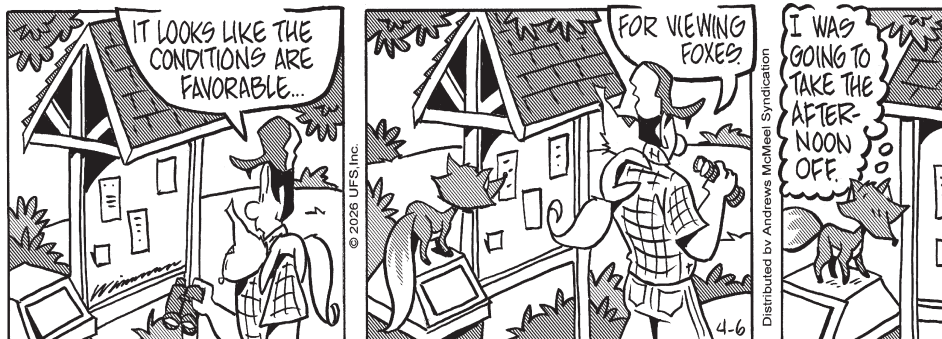


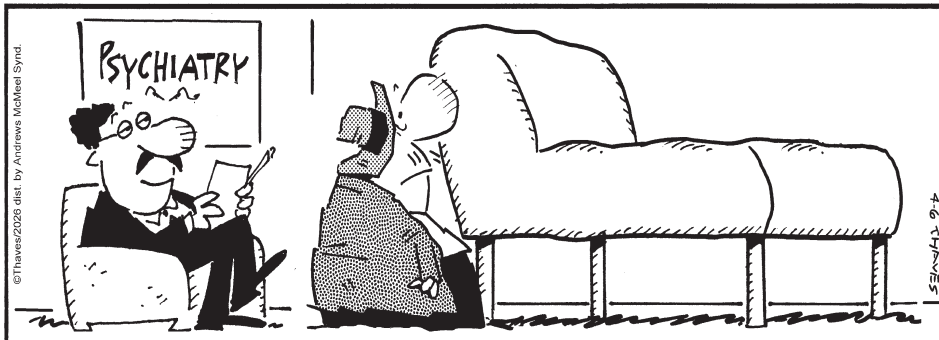
GARFIELD



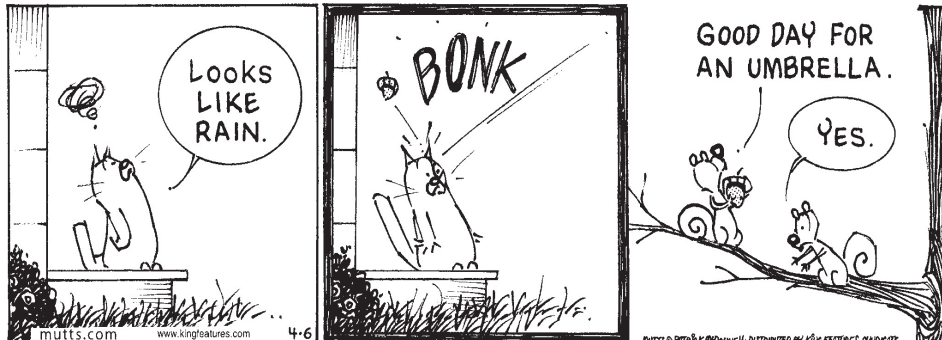
ROSE IS ROSE



FRANK & ERNEST



MUTTS



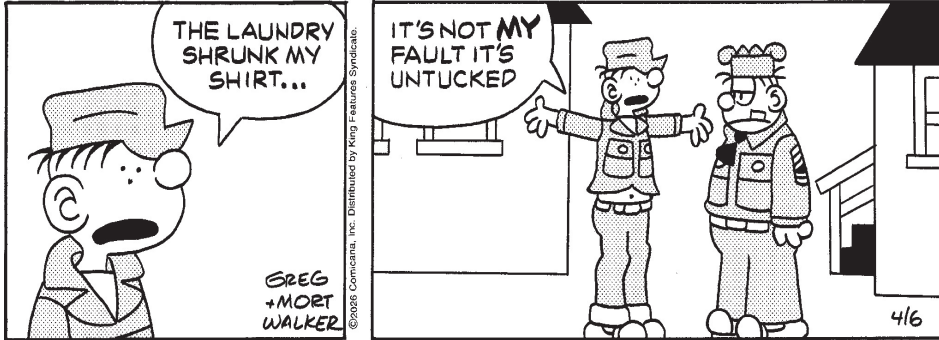
THE GRIZZWELLS



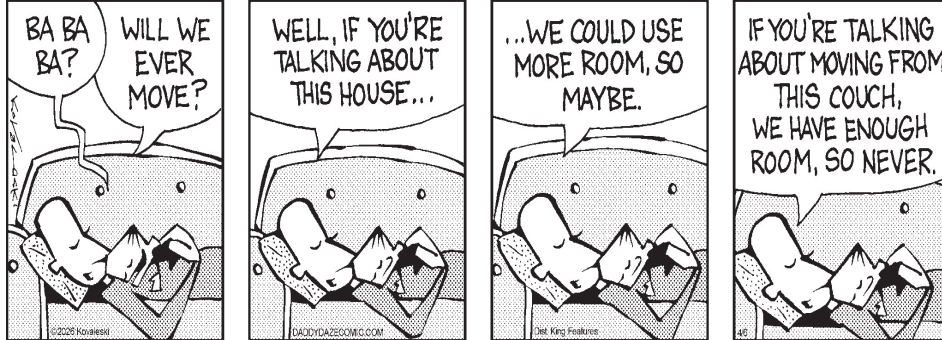
RHYMES WITH ORANGE



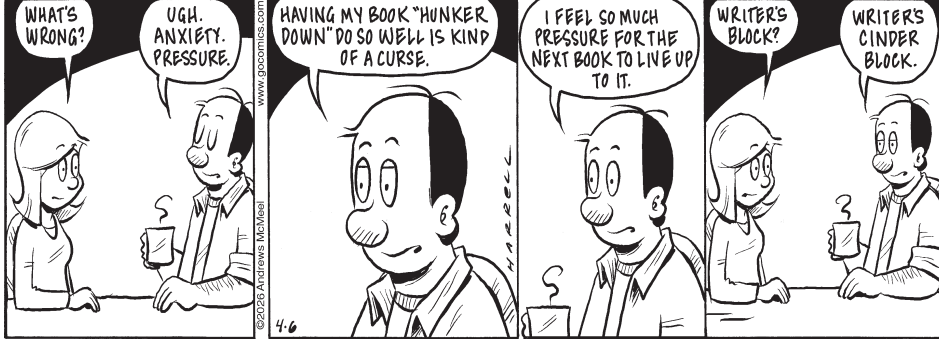
BEETLE BAILEY



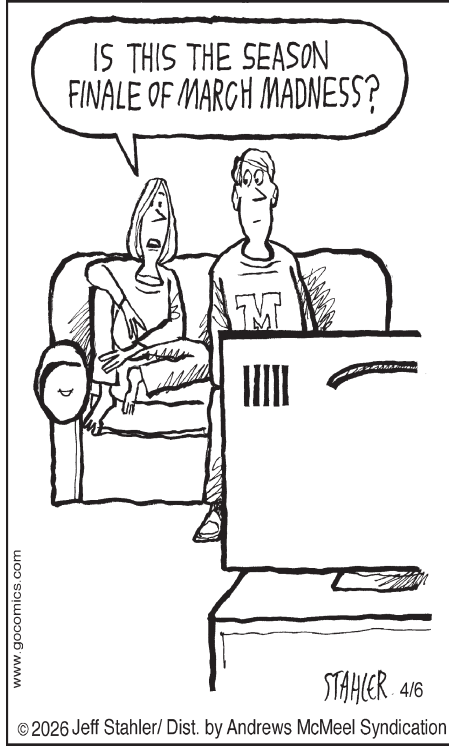
DADDY DAZE



ADAM DAILIES



MODERATELY CONFUSED



REALITY CHECK



THE BORN LOSER



Tea is a beverage that is made by pouring hot water over the dried leaves of the tea plant. People in China were the first to drink tea more than 3,000 years ago. At the time, they used it mainly as a medicinal drink. Today, tea is second only to water as the most consumed beverage on our planet.

Steeped In History

The Chinese popularized tea as a beverage about 1,300 years ago. Tea was introduced to Europe during the 1500s. Tea-drinking among the wealthy became popular in Europe during the 1700s. It became popular for common folk about 100 years later.

Cup Runneth Over

High-quality varieties of tea are grown at high altitudes. Some tea plantations are as high as 2,000 m (6,500 ft.) above sea level. Most teas need to soak, or "steep," for a minute or two in order to produce the best flavor.

Tea Leaves

Can you spot all six differences between these two scenes?



GAME ANSWERS: 1. Splash is different. 2. Windows are missing. 3. Buildings are missing. 4. Eyelashes are missing. 5. Sewer grate is missing. 6. Stripe is missing. 7. Sneeze is missing.

This cartoon is not my cup of tea.

A Serving Of

Shortcuts
by Jeff Harris



Word Search

Can you find the hidden words? Search carefully because some words are backward or diagonal.

CEREMONY BAGS INDIA
LEGEND PLANT BOIL
INSTANT CHINA BOB
KETTLE STEEP HOT
WATER SERVE TEA
JAPAN BREW CUP
GETTHELEADOUT
BIOETHERECANS
CHNWALGCHAATY
NEEDTHEIRLBN
BRATINGPLOAU
BREADAEREMBT
SKATEVBENDSO
SNAPAJRRATAD
RANGEWEAASOIL
BESTACSENSEAT

Tea bags were first introduced in the U.S. in the early 1900s.

China and India produce more tea than all other tea-producing countries combined.

According to legend, tea was discovered by the Chinese Emperor Shennong in 2737 B.C.

What do you get when you cross tea with talking shelled reptiles? Tea-nage mutant ninja turtles.

What do tea plants wear to keep warm? Tea shirts.

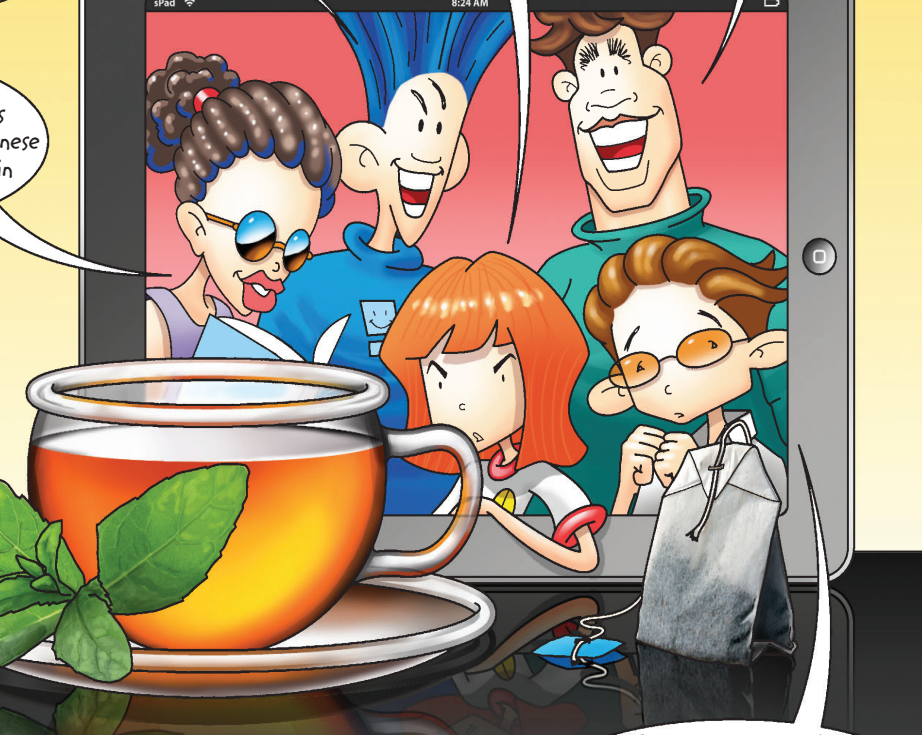
This edition of Shortcuts is sponsored by Ice Tea.

Everybody needs to just chill.

Where does tea go to have fun? A tea party.

For hundreds of years, tea was produced mainly in China, Japan and Korea, until the British began producing large amounts of tea in India during the 1800s.

People in some countries, such as China and Japan, hold special tea ceremonies centered on the brewing and serving of tea.



Instant tea is made by producing large amounts of tea and then removing the water until only a powder remains.