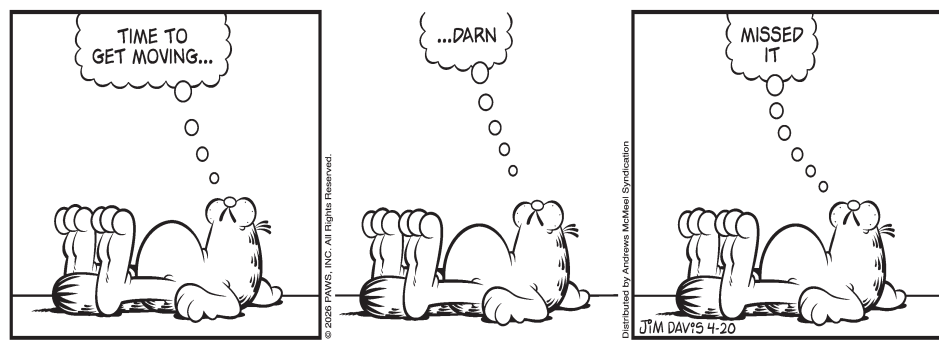
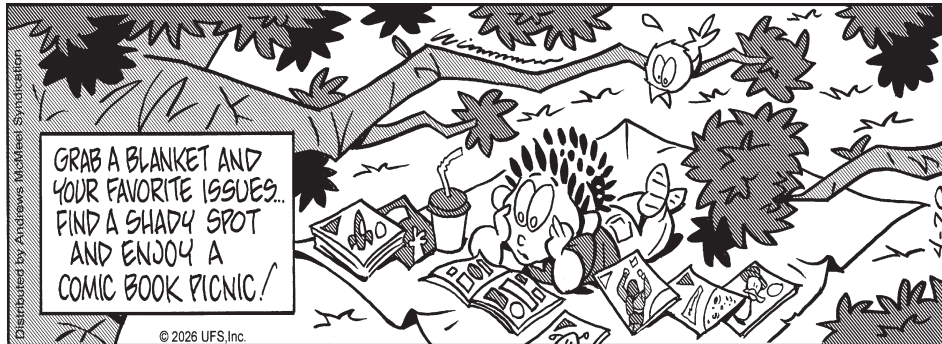


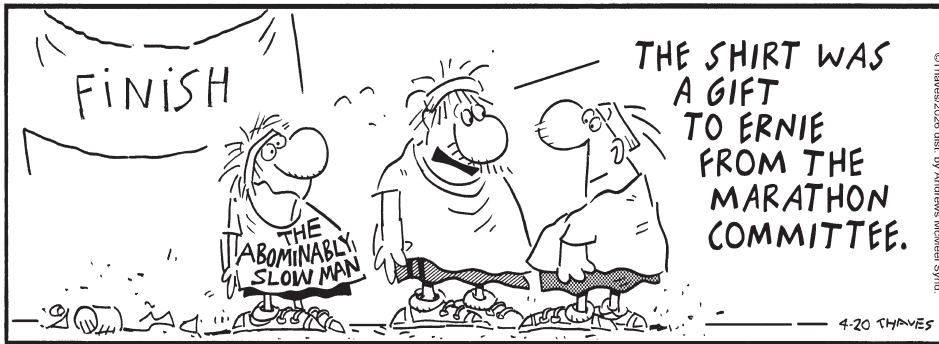
**GARFIELD**



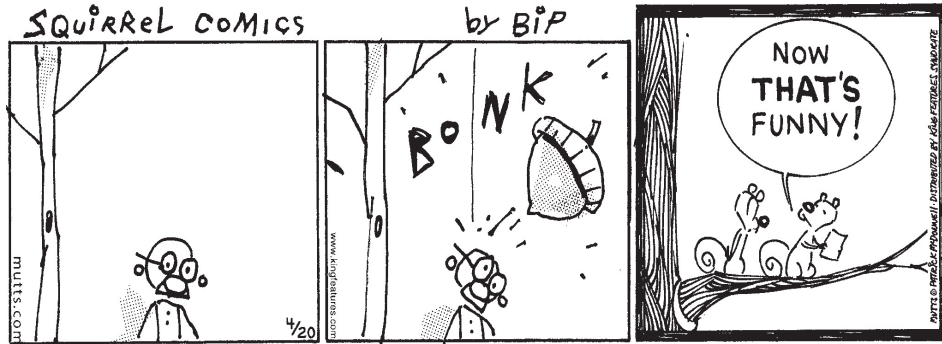
**ROSE IS ROSE**



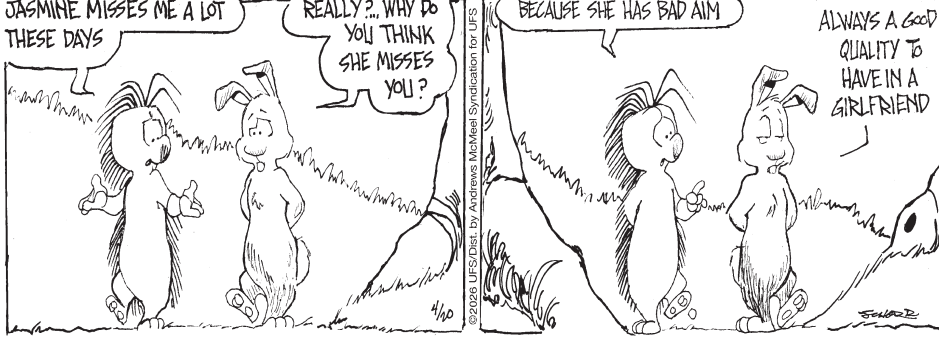
**FRANK & ERNEST**



**MUTTS**



**THE GRIZZWELLS**



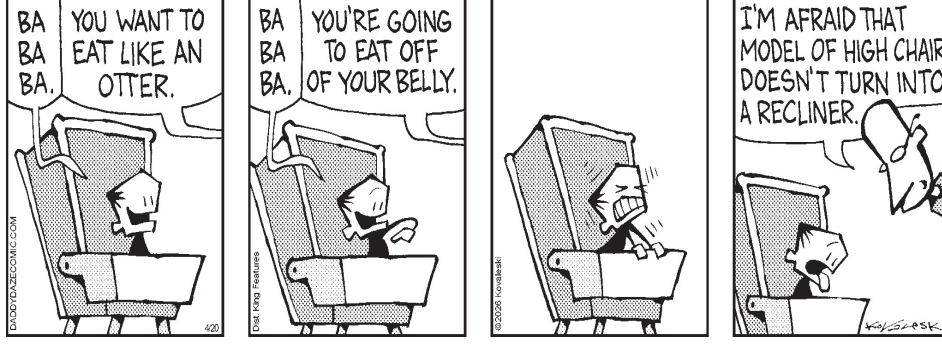
**RHYMES WITH ORANGE**



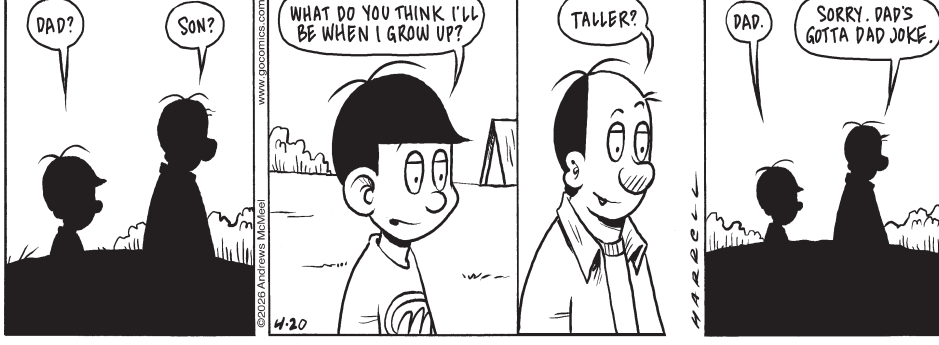
**BEETLE BAILEY**



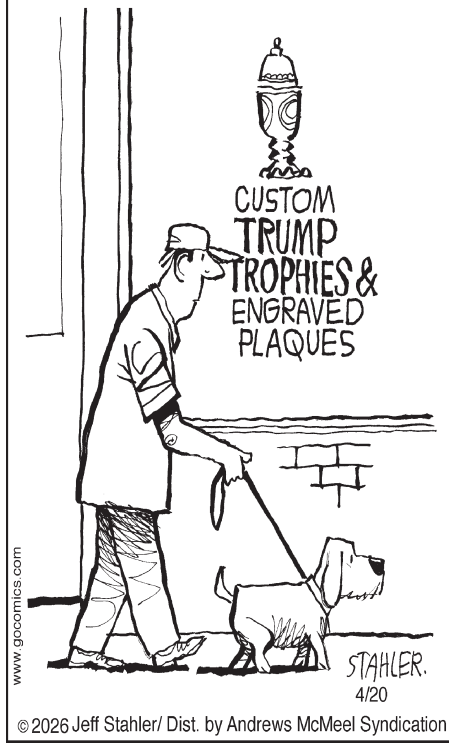
**DADDY DAZE**



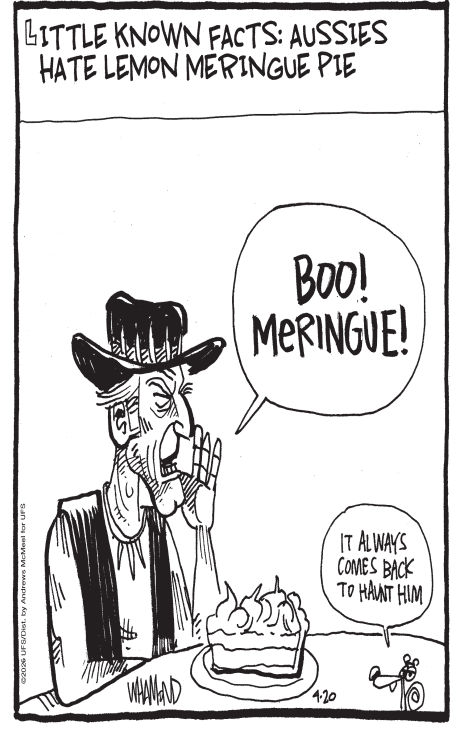
**ADAM DAILIES**



**MODERATELY CONFUSED**



**REALITY CHECK**



**THE BORN LOSER**



**There are two basic types of cherries: sweet cherries and sour cherries. Sweet cherries are usually eaten fresh. Most sour cherries are processed for use in products such as juices, wines and pie fillings. Farmers around the world produce more than 2 million tonnes (2.2 million tons) of cherries each year, making cherries one of the more popular fruits in the world.**

**Word Search**  
Can you find the hidden words? Search carefully because some words are backward or diagonal.

CHERRY	FRESH	PICK
YELLOW	GROW	RIPE
TURKEY	FRUIT	BOB
BLACK	SOUR	RED
TRUNK	TREE	PIT
SWEET	BING	PIE

**Bowl Of Cherries**  
Can you spot six differences between the two scenes below?

**A Fresh Look At Shortcuts®**  
by Jeff Harris

# Cherries

Cherries are a good source of dietary fiber and antioxidants.

Cherries have a very short growing season.

Turkey produces more cherries than any other country in the world.

Most cherries ripen in the late spring or early summer.

Cherries vary in color from yellow to red to black.

Sour cherries contain more nutrients than sweet cherries.

Popular varieties of cherries include Bing, Brooks, King, Sweetheart, Rainier and Royal Ann.

Fresh cherries are a little more expensive than most other fruits because cherry trees require more maintenance than other fruit trees.

Cherries are "drupes." Drupes are fleshy fruit that have a hard central core called a "pit."

This edition of Shortcuts is sponsored by Pit Bull.

You can call me Mr. World-wide.

What do you get when you cross a handsome actor with the center of a cherry?  
Brad Pitt.

What do you get when you cross a cherry with a comedian?  
Cherry Seinfeld.

What did the cherry tree say to the farmer?  
Stop picking on me.

Most of the cherries produced in the world are sweet cherries.

Most cherries used for commercial purposes are picked using machines that grab the trunk of the cherry tree and shake it until the cherries fall down.