

# ISAAC ASIMOV'S SUPER QUIZ

Take this Super Quiz to a Ph.D. Score 1 point for each correct answer on the Freshman Level, 2 points on the Graduate Level and 3 points on the Ph.D. Level.

**Subject: SECOND LARGEST CITIES**

Name the country by its second largest city. (Example: Montreal. Answer: Canada.)

### FRESHMAN LEVEL

- 1. Marseille  
Answer \_\_\_\_\_
- 2. Hamburg  
Answer \_\_\_\_\_
- 3. Barcelona  
Answer \_\_\_\_\_

### GRADUATE LEVEL

- 4. Guadalajara  
Answer \_\_\_\_\_
- 5. St. Petersburg  
Answer \_\_\_\_\_
- 6. Rio de Janeiro  
Answer \_\_\_\_\_

### PH.D. LEVEL

- 7. Busan  
Answer \_\_\_\_\_
- 8. Bergen  
Answer \_\_\_\_\_
- 9. Ankara  
Answer \_\_\_\_\_

**ANSWERS:** 1. France. 2. Germany. 3. Spain. 4. Mexico. 5. Russia. 6. Brazil. 7. South Korea. 8. Norway. 9. Turkey.

### SCORING:

18 points — congratulations, doctor; 15 to 17 points — honors graduate; 10 to 14 points — you're plenty smart, but no grind; 4 to 9 points — you really should hit the books harder; 1 point to 3 points — enroll in remedial courses immediately; 0 points — who reads the questions to you?

Super Quiz is a registered trademark of K. Fisher Enterprises Ltd. © 2026 Ken Fisher North America Syndicate Inc.

## King Classic Sudoku

		7	5					9
	1	5					4	
8	9			4				
			9				7	5
1	8				7		3	
		9						
7	4	6		1	8			
2	5			9			6	4

Difficulty: ★★★

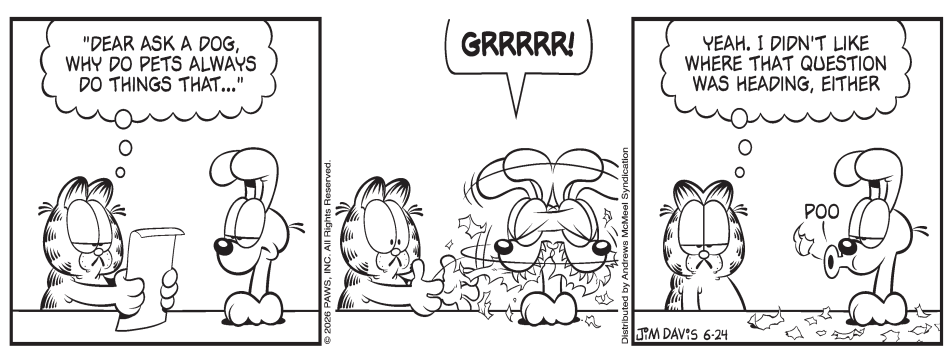
6/24

7	2	1	3	8	6	9	4	5
3	4	6	5	7	9	1	2	8
5	8	9	4	1	2	7	6	3
9	6	3	2	5	4	8	7	1
2	1	8	9	3	7	6	5	4
4	7	5	1	6	8	2	3	9
1	9	4	7	2	3	5	8	6
8	5	2	6	4	1	3	9	7
6	3	7	8	9	5	4	1	2

Difficulty: ★★

6/23

### GARFIELD



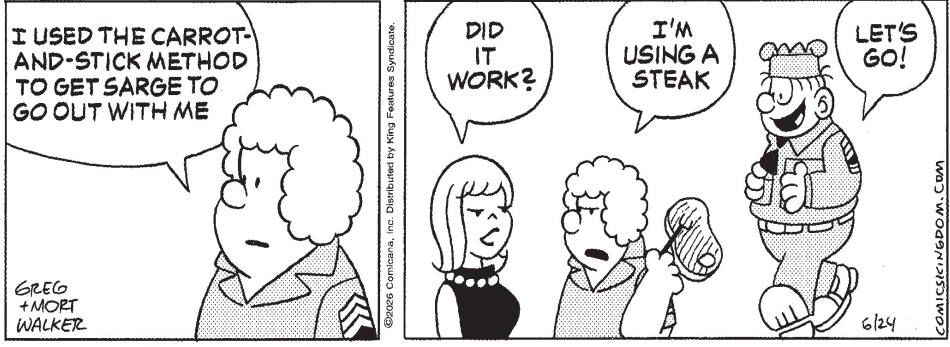
### ROSE IS ROSE



### MUTTS



### BEETLE BAILEY



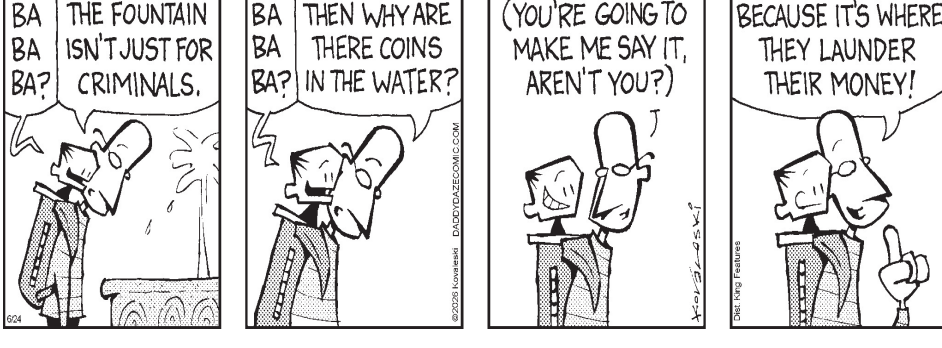
### RHYMES WITH ORANGE



### CUL DE SAC



### DADDY DAZE



### CRABGRASS



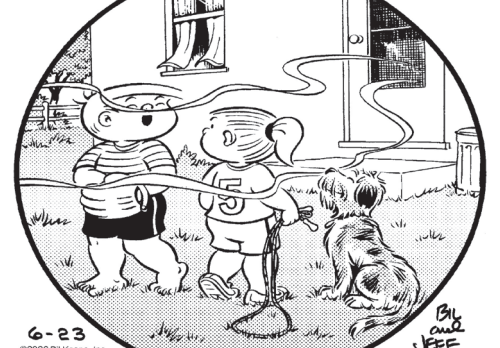
### SALLY FORTH



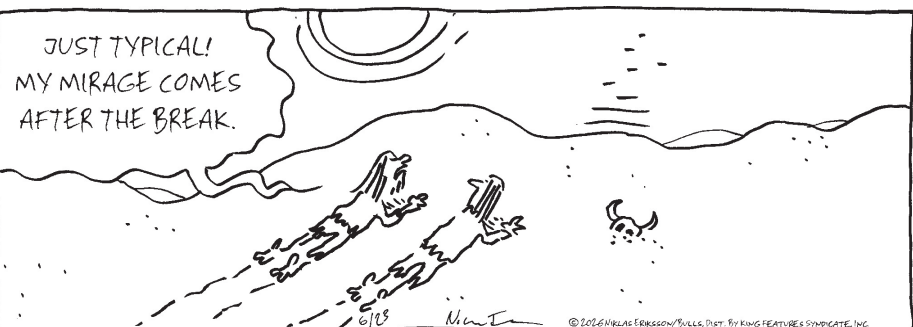
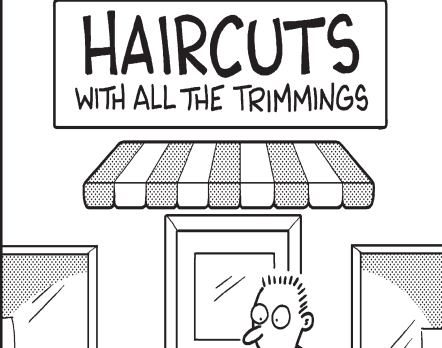
### THE FAMILY CIRCUS

By Bil Keane

### BIZARRO



### OFF THE MARK



©2026 King Features Syndicate, Inc.

©2026 King Features Syndicate, Inc.