

FREE

Simply Vermont Summer Guide 2026

ALL AROUND BARRE, MONTPELIER AND BEYOND



BROUGHT TO YOU BY

THE BARRE MONTPELIER

TIMES ARGUS



Established 1897

THE WORLD

WWW.TIMESARGUS.COM/SUMMERGUIDE

STAY WHERE THE RIDE BEGINS

**Trailside lodging with direct access to
Burke Bike Park and Kingdom Trails**



Ride Vermont's premier trail networks by day. Relax by night.

Book Your Ride & Stay Getaway at Burke Mountain Hotel
STAYBURKE.COM/SPECIALS



Get Ready for Summer Fun Now!



PADDLEBOATS & PONTON BOATS



12 ft. to 28 ft.

BENNINGTON PONTON BOATS

FISHING & SKI BOATS



MERCURY MOTORS



ROLL-IN DOCK SYSTEMS & BOAT LIFTS



COMPLETE LINE OF BOATING ACCESSORIES & WATER TOYS

Over 67 Years Of Sales & Service

GILLES
Sales & Service



Our Professional Technicians Will Keep Your Boats & Motorcycles In Tip Top Shape!

We Service Most Brands Foreign & Domestic
We Also Service ATVs, UTVs
Dirt Bikes & Street Bikes
- Complete Line of OEM and After-Market Parts & Accessories



TIRES TIRES TIRES



FULL LINE OF HELMETS & ACCESSORIES



795 VT RT 14 SOUTH
EAST MONTPELIER, VT 05641
802-476-3101



Official Vermont Inspection Station
for Motorcycles and Trailers

Mon.-Fri. 8AM to 5PM Sat. 8AM to 4PM

Simply Vermont Summer Guide 2026



Table of Contents

Arts, Crafts, Festivals & Fairs	6	Vermont Craft Beverages.....	26
Cultural Spotlights	6	Welcome to Barre.....	28
Visual Arts	10	Miniature Golf.....	30
Arts Organizations	14	Spa, Health & Wellness.....	32
Vermont State Parks	16	Visit to a Fair or Carnival.....	35
Non-Motorized Boating.....	17	Capital City Montpelier.....	36
Local Hiking Trails.....	19	Calendar of Events.....	38
Camping.....	20	Responsible recreation.....	41
The Great Tent Debate.....	21	Rock Climbing	43
Paths and Rail Trails.....	24	Why local outfitters matter...	45
Recreating Close to Home...	25		
Farmers Markets.....	26		

Publisher Ed Coats
Executive Editor Steven Pappas
Creative Services Manager Keri Franzoni
Customer Service Manager Melody Hudson
Advertising Executives Jeff Buckman, Gary Hass, Deborah Phillips, Mike Jacques, Kristine Wolfrom



322 N. Main St., Ste. 4, Barre, VT | 800-498-4296 | www.timesargus.com

SIMPLY VERMONT: SUMMER GUIDE 2026 This publication is a product of The Barre-Montpelier Times Argus. Reproduction in whole or in part without prior written permission is strictly prohibited. Opinions expressed in the publication are those of the authors and do not necessarily represent those of the management of the publication.

©2026 BRUNSWICK PUBLISHING, LLC. ALL RIGHTS RESERVED

ON THE COVER
FILE PHOTO BY KIMBERLY RINGEY



2026 GAME SCHEDULE



JUNE

HOME
 AWAY

HOME GAMES BEGIN AT 6:30 P.M.

SUN	MON	TUE	WED	THUR	FRI	SAT
	1	2	3	4 @ MYSTIC SCHOONERS	5 @ BRISTOL BLUES	6 @ DANBURY WESTERNERS
7 Home Opener! NORTH SHORE NAVIGATORS	8 NORTH ADAMS STEEPLECATS	9	10 @ NEWPORT GULLS	11 @ MARTHA'S VINEYARD SHARKS	12 @ NORTH SHORE NAVIGATORS	13 BRISTOL BLUES
14 Double Header OCEAN STATE WAVES 4:00 OSW is home team	15	16 @ NORTH SHORE NAVIGATORS	17 UPPER VALLEY NIGHTHAWKS	18	19 @ KEENE SWAMP BATS	20 @ SANFORD MAINERS
21 DANBURY WESTERNERS	22	23 MARTHA'S VINEYARD SHARKS	24 @ NORTH ADAMS STEEPLECATS	25	26 KEENE SWAMP BATS	27 SANFORD MAINERS
28 @ UPPER VALLEY NIGHTHAWKS	29 MYSTIC SCHOONERS	30 VALLEY BLUE SOX	Tickets to Mountaineers home games will be on sale at the following locations. Hunger Mountain Co-op • Recreation Field			

JULY

			1 SANDFORD MAINERS	2 @ NORTH SHORE NAVIGATORS	3	4 UPPER VALLEY NIGHTHAWKS
5	6 @ NORTH ADAMS STEEPLECATS	7 KEENE SWAMP BATS	8 UPPER VALLEY NIGHTHAWKS	9	10 @ UPPER VALLEY NIGHTHAWKS	11 SANDFORD MAINERS
12 NORTH ADAMS STEEPLECATS	13 @ SANFORD MAINERS	14	15 @ NORTH ADAMS STEEPLECATS	16	17 NORTH SHORE NAVIGATORS	18 @ KEENE SWAMP BATS
19 NEWPORT GULLS	20 NORTH ADAMS STEEPLECATS	21	22 KEENE SWAMP BATS	23 @ VALLEY BLUE SOX	24 @ KEENE SWAMP BATS	25
26 	27	28 @ SANFORD MAINERS	29 NORTH SHORE NAVIGATORS	30 @ UPPER VALLEY NIGHTHAWKS	31	

The Sanford Mainers will host the 2026 NECBL All-Star Game at Goodall Park in Sanford, Maine, on Sunday, July 26. The day-long celebration kicks off with a softball game featuring members of team executives, interns and personnel; followed by the Home Run Derby and the All-Star Game, with first pitch set for 5:10 p.m. The All-Star Game annually features some of the top talent the New England League has to offer, with players from all 13 NECBL organizations showcasing their skills in front of scouts from every Major League Baseball (MLB) team.

P Poulin Auto Sales, Inc.
 We're here to serve you!
 Route 302
 E. Barre Rd. Barre
802-476-8159
 Sales Mon.-Fri. 9-5; Sat. 9-3
 Service Mon.-Fri. 8-5
www.poulinautosales.com
SERVICE DIRECT
HOTLINE 479-8961

Yankee Cooking as its Best Since 1918
Wayside
 RESTAURANT BAKERY & CREAMERY
 Featuring *Nightly Specials*
 MANY VERMONT DELICACIES
BARRE-MONTPELIER RD.
802-223-6611

Serving Central Vermont For Over 75 Years!
Professional Carpet/Upholstery Cleaning & Maintenance

SERVICES
407 Barre St., Montpelier
802-223-6577

Morse Farm Maple
Creemes are a Home Run!
 Score one yourself.
SUMMER HOURS
 10-7 DAILY

1168 County Road Montpelier, VT 05602
www.morsefarm.com
802-223-2740

Dr. Michael Adler, DDS
 Full Service Filling, Extractions, Root Canals, Crowns, etc.
 Also Great Dental Hygiene Services
 Open Monday-Thursday
 And Emergencies

Central Vermont DENTAL CENTER
 417 US Route 302 • Berlin, VT
802-622-0801


BOB'S LLC SUNOCO
53 MEMORIAL DR. MONTPELIER
802-229-9742
 Full & Self Service Pumps
 M-F 7am-6pm
 Sat. & Sun. Closed
 Self Service After Hours 24/7 w/credit cards
 * Service Techs M-F 7am-5pm

Maple Creemees & Milkshakes Served
OPEN EVERY DAY 8:30-6:00
 Every Day We Ship Vermont Gift Baskets & Maple Syrup Tear 'Round

1 mile north of E. Montpelier Village on Rt. 148 (follow signs) 802-223-5757

Richard J. **WOBBY** JEWELERS
 QUALITY GIFTS FOR EVERY OCCASION
 124 North Main Street
 Suite 1, Barre, VT 05641
 (802) 476-4031
www.richardjwobbyjewelers.com

Tatro's Appliance
 Sales, Service and Parts
 From installs to complete remodels, quality is our goal. We are your best source for parts, accessories & appliances.
 272 Morrison Road
 Barre, VT 05641
www.tatrosaces.com
 mark@tatrosaces.com
 802-476-1416

VERMONT'S TRUCKSTORE

 OFFICIAL RACE CAR FOR THUNDER ROAD


www.codychevrolet.com
 BARRE-MONTPELIER RD. 802-223-6337

E.E. PACKARD ENTERPRISES
 Celebrating 40 Years Of Serving Vermonters
 Residential / Commercial Land Clearing / Grading Building & Site Prep Water & Septic Ponds & Driveways Top Soil / Hauling
 290 Packard Rd.
 East Montpelier, VT 05651
eepackardexcavating@gmail.com

Root, Root, Root for the Home Team...

NELSON ACE HARDWARE
 NelsonAceHardware.com
 (802) 476-5700
 188 No. Main St., Barre

Arts, Crafts, Festivals & Fairs

June 19-21 — Quechee Hot Air Balloon Festival..... Quechee
June 20 — Rutland County Pride Festival..... Rutland
June 22-23 — Okemo Valley's Best of Vermont Summer Festival Ludlow
June 26-28 — Balloon Festival & Vendor Village.....Stowe
June 26-28 — West Windsor Music Festival.....West Windsor
July 9-12 — Basin Bluegrass Festival 31st..... Brandon
July 9, 16, 23, 30, Aug. 8, 13, 20 — Art on Park.....Stowe
July 10-11 — Waterbury Arts Fest..... Waterbury
July 17-19 — Lamoille Country Field Days..... Johnson
July 30-Aug. 1 — Franklin County Field Days..... Highgate
Aug. 4-8 — Addison County Fair & Field Days.....New Haven
Aug. 8 — Annual East Poultney Day.....Poultney
Aug. 8-9 — Art in the Park Summer Festival..... Rutland
Aug. 13-16 — Bennington Battle Day Weekend..... Bennington
Aug. 15 — Castleton Colonial Day.....Castleton

Aug. 18-22 — Vermont State Fair..... Rutland
Aug. 22 — Vergennes Day..... Vergennes
Aug. 22-23 — The Best of Vermont Summer Festival..... Ludlow
Aug. 26-30 — Caledonia County Fair..... Lyndonville
Aug. 28-30 — Bondville Fair..... Winhall
Aug. 28-Sept. 6 — Champlain Valley Exposition..... Essex Junction
Sept. 5 — Garlic Town..... Bennington
Sept. 5-6 — Labor Day Weekend Craft Fair.....Manchester Center
Sept. 5-6 — Guilford Fair..... Guilford
Sept. 10-14 — Orleans County Fair..... Barton
Sept. 17-20 — The Tunbridge World's Fair.....Tunbridge
Sept. 19-20 — Chester Festival on the Green..... Chester
Sept. 26 — Bristol Harvest Festival..... Bristol

Cultural Spotlights

American Fly Fishing Museum

4070 Main St., Manchester
www.amff.org

The American Museum of Fly Fishing is the steward of the history, traditions, and practices of the sport of fly fishing and promotes the conservation of its waters. The Museum collects, preserves, exhibits, studies, and interprets the artifacts, art, and literature of the sport and, through a variety of outreach platforms, uses these resources to engage, educate, and benefit all.

Billings Farm

69 Old River Rd., Woodstock
www.billingsfarm.org

Billings Farm & Museum is dedicated to growing a culture of care and connection to land, food, and community through immersive experiences and shared stories at our working Vermont dairy farm.

Ben & Jerry's Factory Tour

1281 Waterbury-Stowe Rd. Route 100, Waterbury
www.benjerry.com

Our Waterbury site is the only Ben & Jerry's factory open to the public. Our very first factory, built in 1985, continues to manufacture upwards of 350,000 pints per day while offering our fans a sneak peek at our humble beginnings. Our small Scoop shop, retail area and tour route have remained fairly unchanged over the years. Advanced online ticket purchase recommended.

Chaffee Art Center

16 S. Main St, Rutland
www.chaffeeartcenter.org

The Chaffee Art Center, Your Center for Creativity, believes

in the arts. Our mission is to feature artistic talent and foster creativity in an 1890s historic mansion, offering diverse educational programming and a unique rental venue.

The Chazy Fossil Reef National Natural Landmark

Spans over 1500 acres across Lake Champlain

The site is recognized as the oldest known diverse fossil reef in the world, and contains fossils that demonstrate faunal succession.

The Coolidge Homestead

2743 VT Route 22A, West Haven
https://coolidgefoundation.org

The President Calvin Coolidge State Historic Site in Plymouth Notch preserves the birthplace and childhood home of Calvin Coolidge, the 30th President of the United States. The site is now home to the President Calvin Coolidge Museum and Education Center.

The historic site comprises over 200 bucolic acres including the hillside cemetery in which President Coolidge is now buried with the members of his family, the Union Christian Church (c. 1840), the Florence Cilley General Store, a one-room schoolhouse, the Aldrich House, the Wilder Barns, the Wilder House, and the cheese factory. The village is complete with the original artifacts so vital to the portrayal of its history.

Devil's Bowl Speedway

2743 VT Route 22A, West Haven
www.devilsbowl Speedwayvt.com

A half-mile auto racing dirt track running on Saturday nights in the summer. The track opened with a clay surface before being paved in 1971. Clay returned in 1975, was repaved in 2010, and was converted back to a clay dirt track in 2018.

ECHO, Leahy Center for Lake Champlain

1 College St., Burlington
www.echovermont.org

ECHO, Leahy Center for Lake Champlain is a 501(c) non-profit organization. ECHO's mission is to inspire and engage families in the joy of scientific discovery, wonder of nature, and care of Lake Champlain.

Fairbanks Museum & Planetarium

1302 Main St., St. Johnsbury
www.fairbanksmuseum.org

The only public planetarium in Vermont invites you to take a tour of the cosmos, get transported by extreme weather, or travel through time to the age of the dinosaurs. Choose from a selection of films and in-person presentations during your visit. Or reserve the planetarium for a private show.

Hall Art Foundation

544 VT-106, Reading
www.hallartfoundation.org

The Hall Art Foundation was founded in 2007 and makes available postwar and contemporary art works from its own collection and that of Andrew and Christine Hall for the enjoyment and education of the public. Open seasonally, May through November on weekends.

Haskell Free Library & Opera House

93 Caswell Ave., Derby Line
www.haskelloperahouse.org

Founded in 1901, the Haskell Free Library & Opera House supports the cultural needs of the community on both sides of the Canada-U.S. border, in both English and French, through access to information, reading material, a broad range of library services, and programming, as well as the visual and performing arts.

Hildene

1005 Hildene Road, Manchester
https://hildene.org

Founded in 1978, Hildene, The Lincoln Family Home educates and inspires all generations by bringing the legacy of the Lincoln family to life through immersive experiences, innovative educational programs, and dynamic exhibits. The 412-acre historic estate, featuring its Georgian Revival mansion, formal garden, observatory, Welcome Center, and The Museum Store in the historic carriage barn, as well as a 1903 Pullman car, Sunbeam, and Hildene Farm, is one of Vermont's leading cultural heritage sites.

Hope Cemetery

VT Route 14, Barre
www.vermonthhistory.org/hope-cemetery

Opened in 1899, Hope Cemetery in Barre, VT reflects the artistry and materials of the local granite industry with unique and beautiful stonework which represents the unique personalities and history of the people buried there.

Lord's Prayer Rock

Route 17, Bristol

In 1891, Joseph Greene paid a carver to engrave the Lord's Prayer on a big slab of rock that he would frequently stop at along Route 17 when travelling from West Starksboro to deliver logs to the Bristol sawmill.

Montshire Museum of Science

1 Montshire Road, Norwich, VT
https://montshire.org

Enjoy a truly unique experience, with over 150 exciting hands-on science exhibits, both indoors and out, a 100-acre destination located along the Connecticut River, spectacular views, and amazing opportunities for discovery.

The Museum of Everyday Life

3482 Dry Pond Rd., Glover
www.museumofeverydaylife.org

An ongoing revolutionary museum experiment. Its mission is a heroic, slow-motion cataloguing of the quotidian — a detailed, theatrical expression of gratitude and love for the minuscule and unglamorous experience of daily life in all its forms.

Newbury School of Weaving

Newbury
www.newburyschoolofweaving.org

The Newbury School of Weaving stewards a vital, millennia-old craft tradition by building connections between the knowledge of the past and creativity of the future. We foster a culture of curiosity by inviting everyone to make discoveries through our collections and experiential learning. Our purpose is to preserve skill as a living resource that is accessible, meaningful, and relevant to a diverse community.

Old Stone House Museum and Historic Village

109 Old Stone House Rd.
Brownington
www.oldstonehousemuseum.org

The museum first opened to the public in 1925 thanks to the efforts of neighbors who raised the funds necessary to save the building from demolition. For over 100 years the Orleans County Historical Society has been dedicated to caring for the museum's collections and Brownington's Historic District, and bringing the history of Orleans County to life in ways that invite exploration, spark connection, and building meaning.

Park-McCullough Historic House

1 Park Street, North Bennington
https://www.parkmccullough.org

Park-McCullough is one of New England's finest, most significant, and best-preserved Victorian mansions. It is an example of a country house in the French Second Empire Style and incorporates architectural features of the popular Romantic Revival style. To a great extent, the estate retains the integrity and impact of its original design.

Pond Hill Ranch Rodeo

1683 Pond Hill Ranch Rd., Castleton
www.pondhillranch.com

Pond Hill Pro Rodeo Company has produced rodeos for over 50 years. Rodeo season begins on July 4 - September 5, Saturday nights at 7:30 p.m. Bareback bronc riding, calf roping, steer wrestling, team roping, saddle bronc riding, girls barrel racing, girls breakaway roping, and bull riding. The Rodeos are sanctioned by a professional rodeo organization.

Robert Frost Interpretive Trail

From Middlebury, travel south on Route 7 to where it intersects with Route 125. Travel east on Route 125 for 5.8 miles. The parking area is on the right.

This path loops through the forest and over the Middlebury River just off VT 125 while highlighting the works of Robert Frost along the way. Frost visited the area for over 40 years and was a staple at the Middlebury College Breadloaf campus in nearby Ripton.

Rokeby Museum

4334 US-7, Ferrisburgh
www.rokeby.org

Rokeby Museum presents a nationally significant Underground Railroad story tucked inside a quintessential Vermont experience. Visitors will explore the history of four generations of the Robinson family, who called this site home from 1793 to 1961. Explore the Museum's exhibitions, including an ongoing exhibition, Seeking Freedom: The Underground Railroad and the Legacy of an Abolitionist Family, and immerse yourself in the family's history as abolitionists, artists, and farmers. The site includes trails, nine historic buildings to explore, and rotating exhibitions.

Shelburne Farms

1611 Harbor Road Shelburne
www.shelburnefarms.org

Shelburne Farms is an education nonprofit on a mission to inspire and cultivate learning for a sustainable future. We believe that transformative learning experiences sow the seeds for a thriving and more just world. Our work seeks to create the space, spark the conversations, and share the stories to inspire educators, students, and learners of all ages to build a better future for everyone.

State House Tours

115 State St., Montpelier
www.friendsvtstatehouse.org/visitors/tours

As you tour this remarkable piece of living history, you will develop a sense of what makes this building, and the state for which it was built, unique. For walk-in visitors, free, volunteer-led guided tours are available only from early July through October. To schedule any group tour, please contact 802-461-9923 or visit@leg.state.vt.us

The Stone Trust at Scott Farm Orchard

130 Austine Drive, Brattleboro
www.thestonetrust.org

The mission of The Stone Trust is to preserve and advance the art and craft of dry stone walling. An organization that provides education, training, and consulting services. We advocate for the preservation of existing dry stone walls and promote using the correct structural standards for the construction and restoration of dry stone walls.

Sugar Shack and Norman Rockwell Exhibition

29 Sugar Shack Ln., Arlington
www.sugarshackvt.com

Norman Rockwell Exhibition, with prints, gifts and more. Many Arlington residents and customers served as models for Rockwell many years ago and there is one of the best collections of memorabilia that you'll find.

Thunder Road Speedbowl

80 Fisher Rd., Barre
www.thunderroadvt.com

High-banked, paved short track speedway hosting championship divisions: Late Models, Flying Tigers, and Street Stocks along with the non-point Road Warrior class. The track is known for its weekly races on Thursday nights from April through September.

Vermont Mountaineers

Montpelier Recreation Field, 1 Ballfield Dr., Montpelier
www.thevermontmountaineers.com

The Vermont Mountaineers' baseball organization, a non-profit 501(c)(3), is a member of the nationally recognized New England Collegiate Baseball League (NECBL), which plays in all six New England states and recruits its players from the top U.S. collegiate baseball programs.

VINS Nature Center

149 Nature's Way, Quechee

Nature center offering exhibits on birds and dinosaurs, a canopy walk, nature trails, and educational programs.

Whales Tail Trails

South Burlington

Discover this 1.4-mile out-and-back trail near South Burlington, Vermont. Generally considered an easy route, it takes an average of 26 minutes to complete. This trail is great for birding, hiking, and trail running, and it's unlikely you'll encounter many other people while exploring. The trail is open year-round and is beautiful to visit anytime.

Wonderfeet Kids' Museum

GMP Energy Innovation Center, 66 Merchants Row, Rutland
www.wonderfeetkidsmuseum.org

Vermont's first children's museum. Wonderfeet fosters curiosity and exploration, inspires creativity, and ignites the imagination of every child through the power of play.

NOW IN STOCK!

Lift Chair
starting at **\$899**

Lift Chair With Heat & Massage
starting at **\$1499**

Ideal for people needing help sitting or standing

MATTRESS LAND
Family Owned & Operated by Mike & Amanda Peyer!
97 US Rt. 302 Barre-Montpelier Rd • 802-479-0671

"It Runs in the Family"

SILLOWAY MAPLE Family Operated Since 1942

Sugarhouse Store Mon. - Sat. 10 - 5
Creamee Hours Wed. - Sat. 10 - 5

Maple Syrup, Cream, Sugar, Candy & Vermont's Best Maple Creamees

Tours Year Round • We Ship!
Solar-Powered • Traditional Wood-Fired

Purchase online or at the sugarhouse.
1303 Boudro Rd., Randolph Center, VT
(802) 272-6249 • www.sillowaymaple.com

See us at the Montpelier, Burlington, and Stowe Farmer's Markets

Watch Eva Sollberger's "Stuck in Vermont" Silloway Maple Video on WCAX.com

It's Worth the Ride To The Wayside

Restaurant • Bakery • Creamery • Top Employer
Located on the Barre-Montpelier Road Since 1918

Visual Arts

Adamant

Adamant Co-op: Upstairs, 1313 Haggett Road in Adamant, 802-223-5760.

Frank Suchomel Memorial Arts Center: Liz Le Serviget, June 6-Sept. 12, paintings explore memory, place, imagination, and the natural world; local sculptors (outdoors), ongoing, and other works collected by the late Frank Suchomel, Meditation Garden and concert hall, 1231 Haggett Road, Adamant, www.fsmac-quarryworks.org.

Barre

Aldrich Library: 16 Washington St., 802-476-7559, www.aldrichpubliclibrary.org.

Barre Granite Museum: 7 Jones Brothers Way, Barre, 802-476-4605, www.vtgranitemuseum.org.

Espresso Bueno: Silk Screen Prints by Jodi Whalen, through June 30, hand-pulled silk screen prints inspired by the colors, movement, and liveliness of dandelions, 248 N. Main St., Barre, 802-479-0896, espressobueno.com.

ARTE at 159 North Main: 159 North Main St., Barre, www.studioplacearts.com.

Morse Block: Morse Block Deli, 260 N. Main St., Barre, www.studioplacearts.com.

Studio Place Arts: Third Floor Gallery, SPA, 201 N. Main St., Barre, 802-479-7069, www.studioplacearts.com.

Bellows Falls

Canal Street Gallery: 23 Canal St., Bellows Falls, 802-289-0104, canalstreetartgallery.com.

Bennington

Bennington Museum: "The Battle of Bennington," through Dec. 31, Lobby Gallery, 75 Main St., Bennington, 802-447-1571, www.benningtonmuseum.org.

Berlin

Central Vermont Medical Center: "Transformative Moves II," through July 18. Paintings by the late Ray Brown — perhaps the last survey retrospective of this local artist hero, curated by NNEMoCA, lobby of the hospital, 130 Fisher Road, Berlin, 802-371-4100, www.cvmc.org/cvmc-art-gallery.

First Congregational Church: Community Hall, 1808 Scott Hill Road, Berlin, 802-229-0338, <https://fccbvt.org>.

Brandon

Brandon Artists Guild: Four Newest Members, through Oct. 30, Aiden Rose Palmer, Lisa Steckler, Margaret-Desiree Mug and Susan Wacker-Donle, 7 Center St., Brandon, 802-247-4956, brandonartistsguild.org.

Brattleboro

118 Elliot: 118 Elliot Gallery, 118 Elliot St., Brattleboro, 802-380-9072, <https://118elliott.com>.

Brattleboro Museum & Art Center: "Michaela Harlow: A Certain Slant of Light," through July 5, installation of pastel

paintings, scattered sketchbook drawings, and arrangements of stones and birch branches, BMAC, Union Station, Main Street (Route 5) and Routes 119 and 142, Brattleboro, 802-257-0124, www.brattleboromuseum.org.

Mitchell-Giddings: 183 Main St., Brattleboro, 802-251-8290, www.mitchellgiddingsfinearts.com.

Gallery 34: Gallery 34, 34 Main St., Brattleboro.

Vermont Center for Photography: Amani Willett, ongoing, "The Disappearance of Joseph Plummer"; In-Sight Photography Project Student Exhibition, ongoing, 10 Green St., Brattleboro, 802-251-6051, www.vcphoto.org.

Burlington

Burlington City Arts: BCA Center, 135 Church St., Burlington, 802-865-7166, www.burlingtoncityarts.org.

UVM Fleming Museum: Closed May 17-Sept. 7 for Summer Recess, 802-656-0750, www.uvm.edu/fleming.

Glens Falls, N.Y.

The Hyde Collection: "Toshiko Takaezu: Voices of Abstraction," through July 19; "Richard Deon: Lincoln's Campaign to Defeat The Hudson River School," through July 26; "French Prints from the Tobin Sparling Collection," through July 26; Hyde House and the Permanent Collection, ongoing, 161 Warren St., Glens Falls, N.Y., 518-792-1761, hydecollection.org.

Glover

Bread & Puppet Museum: through Nov. 1, fantastic collection of puppets of all sizes, from hand puppets to gigantic puppets used in parades and circuses, that fill renovated 1860s barn, 753 Heights Road, Glover, 802-525-3031, breadandpuppet.org.

Greensboro

Highland Center: Vermont's Finest Furniture Makers, through June 7, Guild of Vermont Furniture Makers, Highland Center for the Arts, 2875 Hardwick St., Greensboro, 802-533-3000, highlandartsvt.org.

Hanover, N.H.

Hood Museum of Art: "Nurturing Nationhood: Artistic Constructions of America, 1790-1940," through Aug. 29; "Nurturing Nationhood: Artistic Constructions of America, 1790-1940," through Aug. 29; "Art Histories/Art Futures," through July 25; "Inhabiting Historical Time: Slavery and Its Afterlives," through July 11; "American Pop," through Nov. 7; "Revolution Reconsidered: History, Myth, and Propaganda," through Aug. 8; "From Mastodon to Mosaic: Building an Academic Art Collection in America," through Feb. 27, 2027; "Always Already: Abstraction in the United States," through March 20, 2027, Dartmouth College, 4 E. Wheelock St., Hanover, N.H., 603-646-1110, hoodmuseum.dartmouth.edu.

Huntington

Birds of Vermont Museum: 900 Sherman Hollow Road, Huntington, 802-434-2167, www.birdsofvermont.org.

Jeffersonville

The Granary Gallery: 4968 Route 15, Jeffersonville.

Lebanon, N.H.

AVA Gallery: "A Shifting Field of Meaning," through July 18, juried exhibit features 62 works by 54 artists from 103 submissions; "Gathering Constellations," through June 11, exhibition in honor of Mental Health Awareness Month, 11 Bank St., Lebanon, N.H., 603-448-3117, www.avagallery.org.

Manchester

Ellenbogen Gallery: 4620 Main St., Manchester Center, (802) 768-8498, <https://ellenbogengallery.art>.

Southern Vermont Arts Center: "Decades in the Making," through July 19, features SVAC Artist Members Joan Curtis, Dick Weis, Fran Bull, Mark Eliot Schwabe, Charles Lysogorski, and Susan Wilson, celebrating 40-plus years of sustained artistic practice, Yester House; "Prelude," through July 26, SVAC Emerging Artist Members Exhibition, Yester House, 930 SVAC Drive, Manchester, 802-362-1405, www.svac.org.

Marshfield

Jaquith Public Library: Old Schoolhouse Common, 122 School St., 802-426-3581, www.jaquithpubliclibrary.org.

Middlebury

Edgewater Gallery at the Falls: 1 Mill St. Middlebury, 802-458-0098, www.edgewatergallery.co.

Edgewater Gallery on the Green: 6 Merchants Row, Middlebury, 802-989-7419, www.edgewatergallery.co.

Henry Sheldon Museum: 1 Park St., Middlebury, 802-388-2117, www.henrysheldonmuseum.org.

Middlebury College Museum of Art: "With Time," through Aug. 9, photographs featuring older adults; "Frederic Church in Vermont," through Aug. 9, more than 40 graphite drawings, oil sketches and finished paintings; Permanent Collection Galleries, ongoing, Mahaney Center for the Arts, South Street (Route 30), Middlebury, 802-443-5007, www.museum.middlebury.edu.

Town Hall Theater: "Abstractions," through Aug. 8, artwork by award-winning Burlington architect Tom Cullins, Jackson Gallery, 72-76 Merchants Row, Middlebury, 802-382-9222, www.townhalltheater.org.

Montpelier

The Front Gallery: Group Show 73, through June 28, work by members in various media, 6 Barre St., Montpelier, 802-552-0877, www.thefrontvt.com.

Hexum Gallery: 16 State St. Suite 1, Montpelier, email hexum-gallery@gmail.com.

Kellogg-Hubbard Library: Kitzmiller Fiction Room, 135 Main St., Montpelier, 802-223-3338, <https://kellogghubbard.org>.

Lost Nation Theater: Lost Nation Theater Lobby, 39 Main St., Montpelier, 802-229-0492, <https://lostnationtheater.org>.

North Branch Nature Center: "A Critical Balance," through June 26, artists working with biodiversity organized by Linda Mirabile and Adelaide Murphy Tyrol, including Heidi Broner,

Susan Bull Riley, Susan Parmenter, Gabriel Tempesta and Ann Young, 713 Elm St., Montpelier, 802-229-6206, northbranchnaturecenter.org.

Vermont Supreme Court: "Heart and Eye: A World of Photography," through June 26, world photography by Elliot Burg, 111 State St., Montpelier, 802-828-0749, curator.vermont.gov.

T.W. Wood Museum: "Sea Wonders," through July 24, Carolyn Shapiro and Deb Fleischmann; Art Resource Association, through July 24, members' exhibit; "Art of Thomas Waterman Wood," ongoing; "Works Progress Administration Artwork," ongoing, Center for Arts and Learning, 46 Barre St., Montpelier, 802-262-6035, www.twwoodgallery.org.

Morrisville

River Arts: Community Arts Center, 74 Pleasant St., Morrisville, 802-888-1261, www.riverartsvt.org.

Plainfield

Cutler Memorial Library: "Mortal Bloom," through Aug. 1, photographs by Hannah Carpenter Pitkin, 151 High St., Plainfield, 802-454-8504, www.cutlerlibrary.org.

Poultney

Stone Valley Arts: Stone Valley Arts at Fox Hill, 145 E. Main St., Poultney, 802-287-8197, www.stonevalleyarts.org.

Putney

NXT Gallery: "Forgotten Not Gone," through Aug. 9, new work by Brattleboro artist Joey Morgan, Next Stage Arts, 15 Kimball Hill, 802-387-0102, www.nextstagearts.org.

Quechee

B.F. Southgate & Company: Arthur Zorn, ongoing, new colorful abstract paintings by Barre artist, 163 Waterman Hill Road, Quechee, 802-478-7748, www.bfsouthgate.co.

Randolph

Chandler Gallery: "This Land is Our Land: A Nation of Artists," through July 11, 2026 open call area artist show, Chandler Center for the Arts, 73 Main St., Randolph, 802-728-9878, www.chandler-arts.org.



**KING ARTHUR CAFÉ, BAKERY,
STORE, AND BAKING SCHOOL**

135 RT 5 SOUTH, NORWICH VT
(802) 649-3361 | KingArthurBaking.com/Visit



Culture & Heritage Visual Arts

Rochester

The BigTown Gallery: 99 N. Main St. (Route 100), Rochester, 802-767-9670, www.bigtownvermont.com/bigtown-gallery.

Rutland

Chaffee Art Center: "Art in Motion," through July 17, Collaboration among Rutland Railway Museum, Rutland Railroad Historical Society, community train enthusiasts and Chaffee artist members; plus works of 160 seventh and eighth grade students from Mr. Van Der Kern's Design Lab at Fair Haven Union Middle School that will engage in a hands-on stone carving unit, 16 S. Main St., Rutland, 802-775-0356, www.chaffeeartcenter.org.

The Hub: "NNEMoCA at The Hub," ongoing, exhibition from the Collection of Northern New England Museum of Contemporary Art (NNEMoCA), which has the largest holdings of contemporary visual art in New England, second floor, 67 Merchants Row, Rutland.

VSTSU Castleton Bank Gallery: Charlotte Reider-Smith, through Sept. 12, "Wet Wings," three large-scale paintings by Goshen artist, 104 Merchants Row, Rutland, (802) 282-1966, cmm02180@vermontstate.edu.

St. Johnsbury

St. Johnsbury Athenaeum: 1171 Main St., 802-748-8291, www.stjathenaeum.org.

Shelburne

Shelburne Museum: Norman Rockwell, June 12-Oct. 25, at home in Vermont; "Big River," through Oct. 25, Ogden Pleissner on Wyoming; "On Point," through Oct. 25, needlework from the Garthwaite Family Collection; "Carl D'Alvia: (mono)LITHS," through Oct. 25; "Varied and Alive," through Oct. 25, from the collection, 6000 Shelburne Road (Route 7), 802-985-3346, shelburnemuseum.org.

South Newfane

Willow Vermont Retreat: 369 Dover Road, South Newfane, www.willowvt.com.

Springfield

The Vault: "On the Wild Side," through July 15, group show in Open Wall Room; "A Watery World in Wood," through June 24,

wood carvings of whales, narwhals, dolphins, puffins and loons by Springfield artist Tom Franklin, Gallery at the Vault, 68 Main St., Springfield, 802-885-7111, www.galleryvault.org. Closing reception ("Wild Side"), 4:30 to 6 p.m. Wednesday, July 15.

Stowe

Vermont Ski and Snowboard Museum: 1 S. Main St., Stowe, 802-253-9911, www.vtssm.org

The Current: 90 Pond Street, Stowe, 802-253-8358, www.thecurrentnow.org.

Tunbridge

Tunbridge General Store: Janet Van Fleet, through July 13, "Curious Life Forms," 304 Vt. Route 110, 802-889-3525, www.thetunbridgegeneralstore.com.

Waitsfield

Big Red Barn: Route 100, Waitsfield, 802-496-6682, www.madrivervalleyarts.org

Mad River Valley Arts: "The Silent Type," through Aug. 27, featuring artists Tina Christensen, Leslie Fry, Michael Jager, Susan Smereka, and Elise Whittemore, The Gallery at Mad River Valley Arts, 5031 Main St., Waitsfield, 802-496-6682, www.madrivervalleyarts.org.

Waterbury

Axel's Frame Shop & Gallery: 5 Stowe St., Waterbury, 802-244-7801, www.axelsgallery.com.

West Rutland

Carving Studio & Sculpture Center: "Light & Stone," ongoing, installation by Darrell Petit and Sean Kernan, CSSC Studios, 636 Marble St., West Rutland, 802-438-2097, carving-studio.org.

White River Junction

Two Rivers Printmaking Studio: 85 N. Main St. Suite 160, White River Junction, 802-295-5901, www.tworiversprintmaking.org.

Worcester

The Hermitage Gallery: 365 Eagle Ledge Road, Worcester, 802-229-6297, email 24davex@gmail.com.

Goodrich's Maple Farm

Family Owned & Operated since 1840
802-426-3388 1-800-639-1854



Learn all about
Maple from
our Trees
to your Table



Gift Shop • Mail Order • FREE Tours Daily
2427 US Rte. 2 • Cabot, VT 05647

Best Chinese Buffet In Town

CHINA MOON

Chinese Restaurant

DINE IN
OR
TAKE OUT

BEER & WINE

NOW 4 FOOD BARS!
Large Parties
Reserve Now

Open Mon.-Thurs. 10:30AM-9:30PM,
Fri. & Sat. 10:30AM-10:00PM,
Sunday 11:00AM-9:30PM

We Use 100% Vegetable Oil

Rte. 302 Barre-Montpelier Rd. 476-8880

ROAM VT

EXPLORE IN STYLE

ADVENTUROUS FOOTWEAR AND APPAREL FOR MEN & WOMEN



Footwear • Apparel • Accessories • Gifts
SHOP IN STORE OR ONLINE! ROAMVT.COM

  8 LANGDON STREET • MONTPELIER, VT • (802) 613-3902

WORTH THE TRIP!

Modern FURNITURE

Stahler Furniture



  **LA-Z-BOY**

Mon. - Thurs. 8:30 a.m. - 5:00 p.m. Fri. 8:30 a.m. - 6:00 p.m.
 Sat. 8:30 a.m. - 3:00 p.m. Sun. CLOSED

4584 US Route 5, Newport, VT
802-334-5616

TAX FREE! 296 Meadow St., Littleton, NH
603-444-2033




WOODBELLY

WOOD-FIRED NOURISHMENT

Cafe ~ Catering ~ Fresh Food

- ☛ Coffee and Creemees
- ☛ Fresh Made Pastries
- ☛ Homemade Breakfast
- ☛ Fresh Sandwiches
- ☛ Pizza, Calzones, Subs
- ☛ Local, Fresh Ingredients Sources from Local Farmers

OPEN 7 DAYS A WEEK, 8AM - 8PM

Camp Meade
 961 US Rt 2, Middlesex, VT 05602

 ONLINE ORDERING AT
WOODBELLYPIZZA.COM



Arts Organizations

A

- Adamant Music School, Adamant** — 802-229-9297, www.adamant.org
- Aldrich Public Library, Barre** — 802-476-7550, www.aldrich.lib.vt.us
- Artistree Community Arts Center & Gallery, South Pomfret** — 802-457-3500, www.artistreevt.org
- AVA Gallery, 11 Bank St., Lebanon, N.H.** — 603-448-3117, www.avagallery.org
- Axel's Frame Shop & Gallery, Waterbury** — 802-244-7801, www.axelsgallery.com

B

- BarnArts Center for the Arts, Barnard** — 802-234-1645, www.barnarts.org
- Barre Opera House, Barre** — 802-476-8188, www.barreoperahouse.org
- Basin Bluegrass Festival, Brandon** — 802-247-3275, www.basinbluegrassfestival.com
- BCA Center, Burlington** — 802-865-7551, www.burlingtoncityarts.com
- Bennington Center for the Arts, Bennington** — 802-442-7158, www.thebennington.com
- Bennington Museum, Bennington** — 802-447-1571, www.benningtonmuseum.org
- Big Red Barn Gallery, Waitsfield** — <http://valleyartsvt.com>
- Big Town Gallery, Rochester** — 802-767-9670, www.bigtowngallery.com
- Billings Farm & Museum, Woodstock** — 802-457-2355, www.billingsfarm.org
- Brandon Artists Guild, Brandon** — 802-247-4956, www.brandonartistsguild.org
- Brandon Bluegrass Festival, Brandon** — 802-247-3275 / 802-236-1096, www.basinbluegrassfestival.com
- Brattleboro Museum & Art Center, Brattleboro** — 802-257-0124, www.brattleboromuseum.org
- Brattleboro Music Center, Brattleboro** — 802-257-4523, www.bmcbvt.org
- Bread & Puppet Museum, Glover** — 802-525-3031, www.breadandpuppet.org
- Bryan Memorial Gallery, Jeffersonville** — 802-644-5100, www.bryangallery.org
- Burklyn Ballet Theatre, Johnson** — 802-635-1390, www.burklynballet.com

C

- Canal Street Gallery, Bellows Falls** — 802-289-0104, www.canalstreetartgallery.com
- Carving Studio & Sculpture Center, West Rutland** — 802-438-2097, www.carvingstudio.org
- Castleton Bank Gallery, Rutland** — 802-282-2396, www.castleton.edu/arts/art-galleries
- Castleton University, Castleton** — 802-468-5611, www.castleton.edu
- Catamount Arts, St. Johnsbury** — 802-748-2600, www.catamountarts.org
- Central Vermont Medical Center, Berlin** — 802-371-4100
- Central Vermont Chamber Music Festival, Randolph** — 802-728-6464, www.centralvtchambermusicfest.org
- Chaffee Art Center, Rutland** — 802-775-0356, www.chaffeeartcenter.org
- Champlain Valley Fair, Essex Junction** — 802-878-5545, www.cvexpo.org
- Chandler Center for the Arts, Randolph** — 802-728-6464, www.chandler-arts.org
- Circus Smirkus, Greensboro** — 1-877-764-7587, www.smirkus.org
- Contemporary Dance & Fitness, Montpelier** — 802-229-4676, www.cdandfs.com
- Counterpoint, Montpelier** — 802-540-1784, www.counterpointchorus.org
- Counterpoint Chorus, Montpelier** — www.counterpointvchorus.org
- Craftsbury Chamber Players, Burlington-Hardwick** — www.craftsburychamberplayers.org

D

- Dorset Theatre Festival, Dorset** — 802-867-2223, www.dorsettheatrefestival.org

F

- Flock Dance Troupe, Sharon** — 802-765-4454, www.flockdance.org
- Flynn Center, Burlington** — 802-652-4500, www.flynncenter.org
- Flynnodog Gallery, Burlington** — 802-652-9985, www.flynnodog.net
- Frog Hollow Vermont State Craft Center, Burlington** — 802-863-6458, www.froghollow.org
- The Front Gallery, Montpelier** — 802-552-0877, www.thefrontvt.com
- Furchgott-Sourdiffe Gallery, Shelburne** — 802-985-3848, www.fsgallery.com

G

- Green Mountain Chamber Music Festival, Burlington** — 802-735-8097, www.gmcmf.org

H

- Hall Art Foundation, Reading** — 802-952-1056, www.hallartfoundation.org
- Helen Day Art Center, Stowe** — 802-253-8358, www.helenday.com
- Higher Ground, South Burlington** — 802-652-0777, www.highergroundmusic.com
- Highland Center for the Arts, Greensboro** — 802-533-9075, www.highlandartsvt.org
- Hood Museum of Art, Hanover, N.H.** — 603-646-2808, <http://hoodmuseum.dartmouth.edu>
- Hopkins Center, Dartmouth College, Hanover, N.H.** — 603-646-2422, www.hop.dartmouth.edu
- The Hyde Collection, Glens Falls, N.Y.** — 518-792-1761, www.hydecollection.org

I

- Island Arts, North Hero** — 802-372-8889, www.islandarts.org

L

- Lake Champlain Chamber Music Festival, Colchester** — 802-846-2175, www.lccmf.org
- Lebanon Opera House, Lebanon, N.H.** — 603-448-0400, www.lebanonoperahouse.org
- Lost Nation Theater, Montpelier** — 802-229-0492, www.lostnationtheater.org

M

- Main Street Arts, Saxtons River** — 802-869-2960, www.mainstreetarts.org
- Manchester Music Festival, Manchester** — 802-362-1956, www.mmfv.org
- Marlboro Music Festival, Marlboro** — 802-254-2394, www.marlbormusic.org
- Middlebury College Museum of Art, Middlebury** — 802-443-5007, www.middlebury.edu/museum
- Middlebury New Filmmakers Festival, Middlebury** — 802-247-4650, www.middfilmfest.org

N

- Next Stage Arts, Putney** — 802-387-0102, <https://nextstagearts.org>
- New World Festival, Randolph** — 802-728-9878, www.newworldfestival.com
- North Branch Nature Center, Montpelier** — 802-229-6206, www.northbranchnaturecenter.org
- Northern Stage, White River Junction** — 802-296-7000, www.northernstage.org

O

- Opera Company of Middlebury, Middlebury** — 802-382-9222, www.ocmvermont.org
- Opera North, Lebanon, N.H.** — 603-448-0400, www.operanorth.org

P

- Paramount Theatre, Rutland** — 802-775-0903, www.paramountvt.org
- Pentangle Arts Council, Woodstock** — 803-457-3981, www.pentanglearts.org
- Point CounterPoint, Salisbury** — 802-247-8467, www.pointcp.com

Q

- QuarryWorks Theater, Adamant** — 802-229-6978, www.adamant.org

R

River Arts Center, 74 Pleasant St., Morrisville — 802-888-1261, www.riverartsvt.org

Rochester Chamber Music Society, Rochester — 802-767-9234, www.rcmsvt.org

Roots on the River, Bellows Falls — 802-463-9595, www.vermontfestivalsllc.com

S

St. Paul's Cathedral, Burlington — 802-864-0471, www.cathedralarts.org

Shelburne Museum, Route 7, Shelburne — 802-985-3346, www.shelburnemuseum.org

Slate Valley Museum, Granville, N.Y. — 518-642-1417, www.slatevalleymuseum.org

Southern Vermont Arts Center, West Road, Manchester — 802-362-1405, www.svac.org

Spruce Peak Performing Arts Center, Stowe — 802-760-4634, www.sprucepeakarts.org

Stone Valley Arts at Fox Hill, Poultney — 802-287-8197, www.stonevalleyarts.org

Stowe Performing Arts, Stowe — 802-253-7792, www.stowearts.com

Stowe Theatre Guild, Stowe — 802-253-3961, www.stowetheatre.com

Studio Place Arts, 201 N Main St., Barre — 802-479-7069, www.studioplacearts.com

Summit School of Traditional Music and Culture, Montpelier — 802-917-1186

T

Town Hall Theater, Middlebury — 802-388-1436, www.townhalltheater.org

Tunbridge Public Library, Tunbridge — 802-889-9404

Two Rivers, White River Junction — 802-295-5901, www.tworiversprintmaking.org

U

Unadilla Theatre, Marshfield — 802-456-8968, www.unadilla.org

V

The Vault, Springfield — 802-885-7111, www.galleryvault.org

Valley Players, Waitsfield — 802-583-1674, www.valleyplayers.com

Vermont Arts Council, Montpelier — 802-828-3293, www.vermontartscouncil.org

Vermont Center for Photography, Brattleboro — 802-251-6051, www.vcpphoto.org

Vermont Comedy Club, Burlington — 802-859-0100, www.vermontcomedyclub.com

Vermont Festival of the Arts, Waitsfield — 802-496-6682, www.vermontartfest.com

Vermont Folklife Center, Middlebury — 802-388-4964, www.vermontfolklifecenter.org

Vermont Governor's Institutes, Castleton — 802-505-9442, www.giv.org

Vermont Granite Museum, Barre — 802-476-4605, www.vtgranitemuseum.org

Vermont History Center, Barre — 802-479-8500, www.vermonthistory.org

Vermont History Museum, Montpelier — 802-828-2291, www.vermonthistory.org

Vermont Humanities Council, Montpelier — 802-262-2626, www.vermonthumanities.org

Vermont Jazz Center, Brattleboro — 802-254-9088, www.vtjazz.org

Vermont Philharmonic, Barre — 802-476-8188, www.vermontphilharmonic.org

Vermont Quilt Festival, Essex Junction — www.vqf.org

Vermont Shakespeare Company, North Hero — www.vermontshakespeare.org

Vermont Supreme Court, Montpelier — 802-828-0749, www.curator.vermont.gov

Vermont Symphony Orchestra, Burlington — 1-800-VSO-9293, www.vso.org

W

Weston Theater Company, Weston — 802-824-5288, www.westonplayhouse.org

White River Gallery, South Royalton — 802-498-8438, www.balevt.org/white-river-gallery

T. W. Wood Gallery, Montpelier — 802-262-6035, www.twwoodgallery.org

Y

Yellow Barn Music School and Festival, Putney — 802-387-6637, www.yellowbarn.org

CUSTOM COUNTERTOPS

CERAMIC • GLASS • NATURAL STONE • CARPET • HARDWOOD • AREA RUGS • GRANITE COUNTERTOPS

Countertops are Manufactured in Our State of the Art Facility in South Barre, Vermont



BARRE TILE
MORRISON CLARK

889 South Barre Road - Rt. 14
802.476.0912 • barretile.com

Happenings

July 4

Very Little Fuss Flute Duo at Emerald Lake State Park, 2 p.m.

Lorie DeHimer Concert at Molly Stark State Park, 5 p.m.

July 11

Bird Walk with Sue Wetmore at Lake St. Catherine State Park, 8 a.m.

Words in the Woods: GennaRose Nethercott at Jamaica State Park, 11 a.m.

Julian Calv at Lake St. Catherine State Park, 4 p.m.

Hard Scrabble Concert at Button Bay State Park, 5 p.m.

July 18

Bird Walk with Sue Wetmore at Emerald Lake State Park, 8 a.m.

Green Mountain Radish Revival at Elmore State Park, 1 p.m.

The Cold Country Blue Grass Band at Grand Isle State Park, 3 p.m.

July 25

Bleeding Hearts Family Band at Stillwater State Park, 5 p.m.

Aug. 8

Words in the Woods: Margaret Draft at Molly Stark State Park, 11 a.m.

Words in the Woods: Mary Elder Jacobsen at Elmore State Park, 11 a.m.

Green Mountain Radish Revival at Grand Isle State Park, 3 p.m.

Fifth Business Concert at Stillwater State Park, 6 p.m.

Aug. 15

Just Duet Concert at Grand Isle State Park, 2 p.m.

Ken and Friends at Branbury State Park, 5 p.m.

We3VT Concert at Stillwater State Park, 5:30 p.m.

Aug. 22

Mariposa Concert at Branbury State Park, noon

The Smokey Newfield Project at Kill Kare State Park, 2 p.m.

Vermont State Parks

Alburgh Dunes, Alburgh

Swimming, fishing, hiking, boat rentals

Allis, Brookfield

Camping, hiking, picnic area/pavilion

Big Deer, Groton

Camping, hiking

Bomoseen, Castleton

Camping, swimming, fishing, hiking, boat rentals, picnic area/pavilion

Boulder Beach, Groton

Swimming, fishing, boat rentals, picnic area/pavilion

Branbury, Brandon

Camping, swimming, fishing, hiking, lodges/cottages/cabins, boat rentals, picnic area/pavilion

Brighton, Island Pond

Camping, swimming, fishing, hiking, lodges/cottages/cabins, boat rentals

Burton Island, St. Albans

Camping, swimming, fishing, hiking, boat rentals

Button Bay, Ferrisburgh

Camping, swimming, fishing, hiking, lodges/cottages/cabins, picnic area/pavilion

Camp Plymouth, Ludlow

Camping, swimming, fishing, hiking, lodges/cottages/cabins, boat rentals, picnic area/pavilion

Coolidge, Plymouth

Camping, hiking, picnic area/pavilion

Crystal Lake, Barton

Swimming, fishing, lodges/cottages/cabins, boat rentals, picnic area/pavilion

D.A.R., Addison

Camping, fishing, picnic area/pavilion

Lake St. Catherine, Poultney

Camping, swimming, fishing, hiking, boat rentals, picnic area/pavilion

Lake Shaftsbury, Shaftsbury

Camping, swimming, fishing, hiking, lodges/cottages/cabins, boat rentals, picnic area/pavilion

Little River, Waterbury

Camping, swimming, fishing, hiking, lodges/cottages/cabins, boat rentals

Lowell Lake, Londonderry

Fishing, hiking

Maidstone, Guildhall

Camping, swimming, fishing, hiking, boat rentals, picnic area/pavilion

Molly Stark, Wilmington

Camping, hiking, picnic area/pavilion

Molly's Falls Pond, Marshfield

Camping, swimming, fishing

Mt. Ascutney, Windsor

Camping, hiking, lodges/cottages/cabins, picnic area/pavilion

Mt. Philo, Charlotte

Camping, hiking, picnic area/pavilion

Muckcross, Springfield

Hiking

New Discovery, Marshfield

Camping, fishing, hiking, picnic area/pavilion

Niquette Bay, Colchester

Swimming, fishing, hiking

North Hero, North Hero

Swimming, fishing

Quechee, Hartford

Camping, hiking, lodges/cottages/cabins, picnic area/pavilion

Elmore, Elmore

Camping, swimming, fishing, hiking, boat rentals, picnic area/pavilion

Emerald Lake, East Dorset

Camping, swimming, fishing, hiking, boat rentals, picnic area/pavilion



Non-motorized boating

There's a quiet revolution happening on the water.

As summer recreation evolves, more people are trading speed for stillness — choosing kayaks, canoes and paddleboards over motorized boats. The shift reflects a broader trend toward low-impact, experience-driven outdoor activities.

Non-motorized boating offers a different kind of connection. Without engine noise, paddlers hear the rhythm of water, the call of birds, and the subtle movement of wind. It's immersive in a way that motorized recreation rarely is.

It's also accessible. Many lakes and rivers across the region support paddling, and rental options have expanded significantly.

For local economies, this trend creates new opportunities. Outfitters offering kayak and canoe rentals are seeing increased demand, while nearby businesses, from cafes to campgrounds, benefit from the influx of visitors.

Safety, however, remains critical. Life jackets, weather awareness and basic paddling skills are essential. Beginners should start on calm waters and consider guided outings.

Environmentally, non-motorized boating has clear advantages.

It produces no emissions, minimizes shoreline erosion and reduces noise pollution — helping preserve ecosystems and wildlife habitats.

The experience is also adaptable. A solo paddle offers solitude, while group outings create shared memories. Families, couples and individuals can all find a pace that suits them.

As outdoor recreation continues to grow, activities that balance accessibility, sustainability and enjoyment are gaining traction. Non-motorized boating checks all three boxes.

In a culture that often prioritizes speed, paddling offers something different: presence.

Getting started doesn't require a major investment. Many beginners can rent equipment for a few hours and learn basic techniques quickly. Local waterways often have designated launch points, making access straightforward even for first-timers. With a bit of practice, paddlers develop rhythm, balance and efficiency, turning what first feels unfamiliar into an intuitive, rewarding activity. That low barrier to entry is a key reason more people are discovering — and sticking with — non-motorized boating.

Fort Dummer, Brattleboro

Camping, hiking, picnic area/pavilion

Gifford Woods, Killington

Camping, hiking, lodges/cottages/cabins, picnic area/pavilion

Grand Isle, Grand Isle

Camping, swimming, fishing lodges/cottages/cabins, boat rentals

Green River Reservoir, Hyde Park

Camping, swimming, fishing, hiking

Half Moon Pond, Hubbardton

Camping, swimming, fishing, hiking, lodges/cottages/cabins, boat rentals

Jamaica, Jamaica

Camping, swimming, fishing, hiking, picnic area/pavilion

Kamp Kill Kare, St. Albans

Swimming, fishing, boat rentals, picnic area/pavilion

Kettle Pond, Groton

Camping, swimming, fishing, hiking

Kingsland Bay, Ferrisburgh

Swimming, fishing, hiking, boat rentals, picnic area/pavilion

Knight Island, North Hero

Camping, swimming, fishing, hiking

Knight Point, North Hero

Swimming, fishing, hiking, boat rentals, picnic area/pavilion

Lake Carmi, Enosburg Falls

Camping, swimming, fishing, hiking, lodges/cottages/cabins, boat rentals, picnic area/pavilion

Ricker Pond, Groton

Camping, swimming, fishing, hiking, lodges/cottages/cabins, boat rentals

Sand Bar, Milton

Swimming, fishing, boat rentals, picnic area/pavilion

Seyon Lodge, Groton

Fishing, hiking, lodges/cottages/cabins, boat rentals, picnic area/pavilion

Silver Lake, Barnard

Camping, swimming, fishing, boat rentals, picnic area/pavilion

Smugglers' Notch, Stowe

Camping, hiking, picnic area/pavilion

Stillwater, Groton

Camping, swimming, fishing, hiking, boat rentals

Taconic Mountains Ramble, Hubbardton

Hiking

Thetford Hill, Thetford

Hiking, picnic area/pavilion

Townshend, Townshend

Camping, hiking

Underhill, Underhill

Camping, hiking

Waterbury Ctr, Waterbury Ctr

Swimming, fishing, hiking, boat rentals, picnic area/pavilion

Wilgus, Weathersfield

Camping, swimming, fishing, hiking, lodges/cottages/cabins, boat rentals, picnic area/pavilion

Woods Island, St. Albans

Camping, swimming, fishing, hiking

Woodford, Bennington

Camping, swimming, fishing, hiking, boat rentals, picnic area/pavilion

Rediscover local hiking trails

You don't need a national park to find a great hike.

Local trails offer accessible, affordable outdoor experiences, often just minutes from home. And while they may lack the fame of distant destinations, they deliver something equally valuable: consistency.

Local forest preserves and park systems provide miles of trails for hiking, biking and wildlife viewing. In places like regional conservation districts, visitors can explore diverse landscapes while supporting conservation efforts that protect these spaces for future generations.

The appeal is simple. Local trails remove the barriers that often prevent people from getting outdoors: travel time, cost and planning. A spontaneous evening hike becomes possible. A quick morning walk turns into a weekly habit.

For beginners, these trails are ideal training grounds. You can experiment with gear, build endurance and develop confidence without committing to a full-day excursion.

They also play a significant role in local tourism. Visitors increasingly seek "micro-adventures" — short, meaningful outdoor experiences that don't require extensive travel. Communities that invest in trail systems benefit from increased foot traffic to nearby businesses, from coffee shops to outdoor retailers.

Environmental impact is another advantage. Staying local reduces travel emissions while encouraging stewardship of nearby natural spaces.

Still, even familiar trails require preparation. Check conditions, bring water and respect posted guidelines.

Many parks are balancing increased usage with conservation needs, making responsible recreation more important than ever.

If you're looking to expand beyond your usual route, start by exploring regional park directories or state resources.

The trail you've driven past a hundred times might be the one that changes your routine —and your perspective.

Even without traveling far, local trails can feel different each time you visit. Light shifts throughout the day, wildlife appears unexpectedly and small changes in the landscape reveal new details. By returning regularly, you can experience something new each time. By noticing patterns and nuances you might miss on a one-time trip, you can build a deeper connection to familiar places. You might even be willing to get outdoors more often with a variety of new experiences available nearby.

SUMMER FUN, INSIDE & OUT!

NEW!

Summer 2026
Exhibition



**Creatividad
SILVESTRE**

**WILD
Creativity**

Engineering Inspired By Nature

In collaboration with   Sponsored in part by  Mascoma Bank

**MONTSHIRE
MUSEUM OF
SCIENCE**

**MONTSHIRE
HEALING
FOREST**



Sponsored in part by  novo nordisk®

Camping

Capital Region

Groton Forest Road Campground

— 2654 VT Route 232, Marshfield, 802-426-4122, www.gfrcg09.com

Lazy Lions Campground

— 281 Middle Road, Graniteville, 802-479-2823, lazylions.com

Limehurst Lake Campground

— 4104 VT Route 14 Williamstown, 802-433-6662, www.limehurstlake.com

New Discovery State Park

— 4239 VT Route 232, Marshfield, 802-426-3042, www.vtstateparks.com/parks/new-discovery

Champlain Islands

Alburg RV Resort

— Bluerock Rd, Off Highway 78, Alburg, 802-796-3733, alburgrvresort.com

Apple Island Resort

— 71 US-2, South Hero, 802-372-3800, appleislandresort.com

Champlain Adult Campground

— Champlain Landing, Grand Isle, 802-355-6808, www.champlainresort.com

Camp Skyland on Lake Champlain

— 398 South St, South Hero, 802-372-4200, campskylandvt.com

Goose Point Campground

— 5066 US-2, Alburgh, 802-796-3711, www.goosepointcamp.com

Grand Isle State Park

— 36 E. Shore S, Grand Isle, 802-372-4300, www.vtstateparks.com/parks/grand-isle

Knight Island State Park, Knight Island

— North Hero, 802-524-6353, www.vtstateparks.com/parks/knight-island

Sunset Rock RV Park

— 755 Quarry Rd, Isle La Mott, 802-393-2576, www.sunsetrockrvpark.com

Champlain Valley

10 Acres Campground & RV Park

— 9 10 Acre Dr, Addison, 802-759-2662, 10acrescampground.com

Button Bay State Park

— 5 Button Bay State Park Rd, Vergennes, 802-475-2377, www.vtstateparks.com/parks/button-bay

Country Village Campground

— 40 US-7, Leicester, 802-247-3333, www.countryvillagecampground.com

D.A.R. State Park

— 6750 VT RT 17 W, Addison, 802-759-2354, www.vtstateparks.com/parks/dar

Maple Hill Campsites

— 3825 Quaker St, Lincoln, 802-453-3687 | RV and tent sites., maplehillcamp.com/

Moosalamoo Campground

— Salisbury, 802-767-4261, www.fs.usda.gov/r09/gmfl/recreation/moosalamoo-campground

Rivers Bend Campground

— 722 Rivers Bend Rd, New Haven, 802-388-9092, www.riversbendcamping.com/

Silver Lake Campground

— Silver Lake Rd, Salisbury, 802-767-4261, www.fs.usda.gov/r09/gmfl/recreation/silver-lake-campground

Sportsman Campground and Cottages

— 6640 Vermont Rte 125, Addison, 802-759-2348, www.sportsmanccs.com

Deerfield Valley

Grout Pond Recreation Area

— 802-362-2307, www.fs.usda.gov/r09/gmfl/recreation/grout-pond-recreation-area

Jamaica State Park

— 48 Salmon Hole Ln, Jamaica, 802-874-4600, www.vtstateparks.com/parks/jamaica

Molly Stark State Park

— 705 VT-9 East, Wilmington, 802-464-5460, www.fpr.vermont.gov/molly-stark-state-park

Greater Burlington

Lone Pine Campsites

— 52 Sunset View Rd, Colchester, 802-878-5447, www.lonepinecampsites.com

Malletts Bay Campground

— 88 Malletts Bay Campground, Colchester, 802-863-6980, www.mallettsbaycampground.com

Mt. Philo State Park

— 5425 Mt Philo Rd, Charlotte, 802-425-2390, www.vtstateparks.com/parks/mount-philo

North Beach Campground

— 60 Institute Rd, Burlington, 802-862-0942, www.burlingtonvt.gov/964/North-Beach-Campground

Shelburne Camping Area

— 4385 Shelburne Rd, Shelburne, 802-985-2540, shelburnecamping.com

Underhill State Park

— 352 Mountain Road, Underhill, 802-899-3022, www.vtstateparks.com/parks/underhill

Lower Connecticut River Valley

Bald Mountain Campground

— 1760 State Forest Rd, Townshend, 802-365-7510, www.baldmountaincampground.com

Brattleboro North KOA

— 1238 US-5, East Dummerston, 800-562-5909, www.koa.com/campgrounds/brattleboro/

Crown Point Camping Area

— 131 Bishop Camp Rd, Springfield, 802-263-5555, crownpointcampingarea.com

Dorset RV Park

— 1567 VT-30, Dorset, 802-867-5754, www.dorsetrvpark.com

Emerald Lake State Park

— 65 Emerald Lake Ln, East Dorset, 802-362-1655, www.vtstateparks.com/parks/emerald-lake

Fort Dummer State Park

— 517 Old Guilford Rd, Brattleboro, 802-254-2610, www.vtstateparks.com/parks/fort-dummer

Getaway Mountain Campground

— 3628 US-5, Ascutney, 802-674-2812, www.getaway-mountaincampground.com

Kampfires Campground Inn

— 792 US-5, Dummerston, 802-254-2098, www.kampfires.com

Mt. Ascutney State Park

— 1826 Back Mountain Rd, 802-674-2060, www.vtstateparks.com/parks/mount-ascutney

Running Bear Camping Area

— 113 Running Bear Trail, Windsor, 802-674-6417, www.runningbearvt.com

Townshend State Park

— 2755 State Forest Rd, Townshend, 802-365-7500, www.vtstateparks.com/parks/townshend

Tree Farm Campground

— 53 Skitchewaug Trail, Springfield, www.treefarmcampground.com, 802-885-2889

West River Camperama

— 192 Depot Rd, Townshend, 802-365-4315, <https://westrivercamperama.com>

Wilgus State Park

— 3985 Connecticut River Rd, Springfield, 802-674-5422, www.vtstateparks.com/parks/wilgus

Northeast Kingdom

Alpine Valley RV Park & Campground

— 1111 Main St, Concord, VT, 802-695-9933, www.alpinevalleycampground.com

Barrewood Campground

— 3102 Vermont Rte 100, Westfield, 802-744-6340, www.barrewoodcampground.us

Belview Campground

— 620 Eastern Ave, Barton, 802-525-3242, www.belviewcampgroundvt.com

Big Deer State Park

— 1467 Boulder Beach Rd, Groton, 802-584-3822, www.vtstateparks.com/parks/big-deer

Branbury State Park

— 3570 Lake Dunmore Rd, Salisbury, 802-247-5925, www.vtstateparks.com/parks/branbury

Breezy Meadows Campground

— 23 Wendell Rd, Concord, VT, 802-695-9949, www.breezymeadowscampground.com

Brighton State Park

— 102 State Park Rd, Island Pond, 802-723-4360, www.vtstateparks.com/parks/brighton

Char-Bo Campground

— 371 Hayward Hollow Rd, Derby, 802-766-8807, char-bo.com

Kettle Pond State Park

— 4239 VT-232, Groton, 802-426-3042, www.vtstateparks.com/parks/kettle-pond

Kingdom Campground

— 972 Lynburke Rd, Lyndonville, 802-626-1151, www.kingdomcampground.com

Lakeside Camping

— 1348 Route 105, East Brighton Road, 802-723-6649, www.lakesidecamping.com

Moose River Campground

— 2870 Portland St, St Johnsbury, 802-748-4334, www.moosrivercampground.com

Millbrook Campground

— 1184 VT RT 100, Westfield, 802-744-8085, www.millbrookcampgroundvt.com

Ricker Pond State Park

— 18 Ricker Pond Campground Rd, Groton, 802-584-3821, www.vtstateparks.com/parks/ricker-pond

Seyon Lodge State Park

— 2967 Seyon Pond Rd, Groton, 802-584-3829, www.vtstateparks.com/parks/seyon-lodge

Stillwater State Park

— 44 Stillwater Rd, Groton, 802-584-3822, www.vtstateparks.com/parks/stillwater

Sugar Ridge RV Village Campground

— 24 Old Stagecoach Rd, Danville, 802-684-2550, www.sugarridgecampground.com

Tree Corners Family Campground

— 95 VT-58, Irasburg, 802-754-6042, www.treecorners.com

Vermont Freedom Campground (Adult Only)

— 218 Tousant Hill Rd, Greensboro Bend, 802-274-3091, www.vermontfreedomcampground.com

Will-O-Wood Campground

— 227 Will-O-Wood Ln, Brownington, 802-525-3575, www.will-o-woodcampground.com



© ADOBE STOCK

The great tent debate

Walk into any outdoor store and you'll face a wall of tents — lightweight, family-sized, ultralight, budget-friendly. Choosing the right one can feel overwhelming, especially for first-time campers.

The good news: most summer campers don't need anything extreme. The key is matching your tent to how and where you plan to camp.

The best tent isn't the most expensive or the lightest. It's the one that fits your style of adventure.

For casual campers heading to established campgrounds, comfort matters more than weight. A larger tent with room to stand, store gear and move around can make the experience far more enjoyable. Many public campgrounds are easily accessible by car, meaning you don't need to worry about carrying your gear long distances.

For hikers or backpackers, weight becomes critical. Lightweight tents are designed to pack small and carry easily, but they often sacrifice interior space and durability. If you're hiking into remote areas, that tradeoff is worth it.

Weather resistance is another factor. Even in summer, storms can roll in quickly. Look for tents with a full rainfly and

solid ventilation to handle both rain and humidity.

Don't overlook setup. After a long day outdoors, wrestling with complicated poles can be frustrating. Many newer tents are designed for quick assembly, making them ideal for beginners.

Budget matters, too. While premium tents offer durability and lighter materials, many affordable options perform well for occasional campers. Renting gear from local outfitters can be a smart way to test before committing.

Finally, think about capacity realistically. A "four-person" tent typically fits four people tightly, with little room for gear. Many campers size up for comfort.

It's also worth considering the little details that make a big difference over a weekend. Interior pockets help keep essentials organized, while vestibules provide a dry place for muddy shoes and gear.

Good airflow reduces condensation on warm nights, improving overall comfort.

Before heading out, practice setting up your tent at home. A quick trial run can prevent frustration at the campsite and help ensure your trip starts — and ends — on the right note.

White Caps Campground — 5659 VT-5A, Orleans, 802-467-3345, www.whitecapscampground.com

Northwest Vermont

Burton Island State Park — 2714 Hathaway Point Rd, St Albans City, 802-524-6353, www.vtstateparks.com/parks/burton-island

Campbell's Bay — 205 Campbell Bay Rd, Swanton, 802-868-7258, www.campbellsbayvermont.com

Hazen's Notch Campground — 185 Green Hill Rd, Lowell, 802-744-6612, hazens-notch-campground.com

Lake Carmi State Park — 460 Marsh Farm Rd, Franklin, 802-933-8383, www.vtstateparks.com/parks/lake-carmi

Lake Dunmore Kampersville — 1457 Lake Dunmore Rd, Salisbury, 802-352-4501, www.kampersville.com

Maidstone State Park — 5956 Maidstone Lake Rd, Guildhall, 802-676-3930, www.vtstateparks.com/parks/maidstone

Maple Grove Campground — 1627 Main St, Fairfax, 802-849-6439, www.maplegrovevt.com

Mill Pond Campground — 75 Mill Pond Rd, Franklin, 802-285-2240, www.millpondcampground.com

Waterhouses — 937 W Shore Rd, Salisbury, 802-352-4433, www.waterhouses.com

Woods Island State Park — 1 Woods Island, Swanton, 802-524-6353, www.vtstateparks.com/parks/woods-island

Okemo Valley

Camp Plymouth State Park — 2008 Scout Camp Rd, Ludlow, 802-228-2025, www.vtstateparks.com/parks/camp-plymouth

Caton Place Campground — 2419 E Rd, Cavendish, 802-226-7767, catonplacecampground.com

Coolidge State Park — 855 Coolidge State Park Rd, Plymouth, 802-672-3612, www.vtstateparks.com/parks/coolidge

Horseshoe Acres Campground — 1978 Weston, Weston-Andover Rd, Andover, 802-875-2960, www.horseshoeacrescampground.com

Greendale Campground — 698 Greendale Rd, Weston, 802-362-2307

Greater Rutland

Bomoseen State Park — 22 Cedar Mountain Rd, Castleton, 802-265-4242, www.vtstateparks.com/parks/bomoseen

Chittenden Brook Campground — Chittenden, VT, 802-767-4261, www.fs.usda.gov/r09/gmfl/recreation/chittenden-brook-campground

Gifford Woods State Park — 34 Gifford Woods Acc, Killington, 802-775-5354, <https://www.vtstateparks.com/parks/gifford-woods>

Greenwood Lodge & Campsites — 311 Greenwood Dr, Woodford, 802-442-2547, www.campgreenwoodvt.com

Half Moon Pond State Park — 1621 Black Pond Rd, Benson, 802-273-2848, www.vtstateparks.com/parks/half-moon-pond

Hapgood Pond Recreation Area — Hapgood Pond Recreation Area and Campground is 13 miles east of Manchester, 802-362-2307, www.recreation.gov/camping/campgrounds/232393

KOA Lake Bomoseen Campground — 18 Campground Dr, Bomoseen, 800-562-5025, www.koa.com/campgrounds/lake-bomoseen

Lake St. Catherine State Park — 3034 VT-30, Poultney, 802-287-9158, www.vtstateparks.com/parks/lake-st-catherine

Lake Shaftsbury State Park — 262 Lake Shaftsbury Rd, Shaftsbury, 802-375-9978, www.vtstateparks.com/parks/lake-shaftsbury

Merck Forest & Farmland Center — 3270 VT-315, Rupert, 802-394-7836, www.merckforest.org

Pine Hollow Campground — 342 Pine Hollow Rd, Pownal, 802-823-5569, www.pinehollowcamping.com

Smoke Rise Campground — 2145 Grove St, Brandon, 802-247-6984, www.smokerisecg.com

The Shires Camping on the Battenkill — 48 Camping on the Battenkill, Arlington, 802-375-6663, www.modernamericacampgrounds.com/vermont/camping-on-the-battenkill

Woodford State Park — 142 State Park Rd, Woodford, 802-447-7169, www.vtstateparks.com/parks/woodford

Upper Connecticut Valley

Kenolie Village Campground — 16 Kenolie Campground Rd, Newfane, 802-365-7671, www.kenolievillagecampground.com

Pleasant Valley Campground — 421 Ticklenaked Pond Rd, East

Ryegate, 802-584-3884, www.pleasantvalleycampground.com

Quechee Pine Valley Campground — 3700 Woodstock Road, White River Junction, 802-296-6711, quecheepinevalley.com

Quechee State Park — 1 Quechee State Park, White River Junction, 802-295-2990, www.vtstateparks.com/parks/quechee

Rest N' Nest Campground — 300 Latham Rd, East Thetford, 802-785-2997, www.restnrest.com

Silver Lake State Park — 20 State Park Beach Rd, Barnard, 802-234-9451, www.vtstateparks.com/parks/silver-lake

Upper Green Mountains

Brewster River Campground — 802-391-0564

Elmore State Park — 856 VT-12, Elmore, 802-888-2982, www.vtstateparks.com/parks/elmore

Gold Brook Campground — 1900 Waterbury Rd, Stowe, 802-253-7683, www.gold-brook-campground-llc.square.site

Green River Reservoir State Park — 1394 Green River Dam Rd, Hyde Park, 802-888-1349, www.vtstateparks.com/parks/green-river-reservoir

Little River State Park — Water Reservoir, 3444 Little River Rd, Waterbury, 802-244-7103, www.vtstateparks.com/parks/little-river

Maplewoods Campground — 260 Maplewoods Dr, Johnson, 802-635-9181, www.maplewoodscampground.net

Mountain View Campground & Cottages — 802-888-2178

Smugglers Notch RV Village — 37 Rv Wy, Jeffersonville, 802-335-2118, www.smugglersnotchrvillage.com

White River Valley

Abel Mountain Campground — 354 Mobile Acres Rd, Braintree, 802-728-5548, www.abelmountain.com

Allis State Park — 284 Allis State Park Rd, Randolph, 802-276-3175, www.vtstateparks.com/parks/allis

Four Springs Farm Campground — 776 Gee Hill Rd, South Royalton, 802-763-7296, www.fourspringsfarm.com



**Riverside Seating
INSIDE AND OUTDOORS**

**SERVING
LUNCH 11:30 a.m. - 4 p.m.
DINNER Noon - 9 p.m.**

**“CULINARY EXPERIENCE, CHARMING
ATMOSPHERE, AWARD-WINNING SERVICE”**

**CALL AND RESERVE YOUR TABLE
802.223.0229**

3 MAIN STREET MONTPELIER | WWW.SARDUCCIS.COM



Regular Show (RS) General Admission: Adults \$15 - Seniors \$13 - Teens (11-15) \$13 w/paying adult; Children 11 & Under \$2 w/paying adult unless otherwise listed
 Pit Admission \$30 w/lic. ~ \$40 w/o lic. Pit Gate Opens at 3PM - Grandstands Open at 5PM - 1st Green Flag at our famous 6:00pm(ish) start time
 WEEKLY DIVISIONS - DIRTcar Sportsman Modifieds (SM), DIRTcar Sportsman Coupes (SC), Xtreme DIRTcar DMA Midgets (XM), Sportsman Modifieds Limited (SML)
 Late Models (LM), Dirt Stocks (DS), & Ridge Runners (RR) ~ plus monthly 4/6 Cyl Enduro, visiting Granite State Mini Sprints (GSMS) & Sprint Cars of New England (SCoNE)
 (DP=Double Points)



JUNE

Saturday 20th (RS) **4/6 ENDURO**
 SM-SC-SML-XM-DS-RR (LM OFF) Presented by: Wells River Savings
 Saturday 27th **David's House Benefit** plus SCoNE SM-SC-SML-LM-DS-RR (XM OFF)
 Adults \$20 Teens/Seniors \$18 Presented by: PTO Automotive

JULY

Saturday 4th **4TH OF JULY Fireworks** courtesy Noise R Us Dad Preston Memorial
 Sportsman Modifieds Madness SM-SC-SML-XM-LM-DS-RR Adults/Teens/Seniors \$20
 Presented by: April May & Butch
 THURSDAY 9th **Pond Hill Ranch Bull Riding Rodeo**-Adults/Teens/Seniors \$20
 Presented by: Wells River Chevrolet part of the Auto Saver Group
 Saturday 11th **SUMMER BREAK**
 Saturday 18th Jim Fields 46 Memorial plus SCoNE SM-SC-SML-LM-DS-RR (XM OFF)
 Adults \$20 Teens/Seniors \$18 Presented by: Jim Fields Family
 Saturday 25th (RS) **4/6 ENDURO Dirt Stock Madness** SM-SC-XM-DS-RR (SML & LM OFF)
 Presented by: Montshire Farm

AUGUST

Saturday 1st (RS) **John Poor Memorial Coupe Madness** plus GSMS
 SM-SC-SML-LM-DS-RR (XM OFF) Presented by: Walker Motor Sales Inc.
 Saturday 8th (RS) **KIDS RIDES** (plus GSMS)
 SM-SC-SML-XM-LM-DS-RR Presented by: Swenson Insurance Co.
 Saturday 15th **Old Timers Night /NE Auto Racers** plus SCoNE(XM & LM OFF)
 SM-SC-SML-DS-RR Adults \$20 Teens/Seniors Presented by: Sabil & Sons
 Saturday 22nd (RS) **4/6 ENDURO** SM-SC-SML-XM-LM-DS-RR
 Presented by: Murray's Market Nursery & Landscaping LLC
 Saturday 29th plus SCoNE SM-SC-SML-LM-DS-RR (XM OFF)
 DIRTcar Sportsman Modifieds King of the Hill points Competition
 Adults \$20 Teens/Seniors \$18 Presented by: Optical Expressions Barre VT

SEPTEMBER

Saturday 5th (RS) **Midget Madness** SM-SC-SML-XM-LM-DS-RR Presented by: TBA
 Saturday 12th SM-SC-SML-XM-LM-DS-RR (DP) plus SCoNE Mods Limited, Midgets
 and Late Models FINAL night twin 15's & Time Trials Adults \$20 Teens/Seniors \$20
 Presented by: Ron's Fix it Shop
 Saturday 19th **95.3/107.1 The Wolf NE Dirt Track Championships** SM-SC-XM-DS-RR
 4/6 ENDURO Time Trials, 100 lap Mods, 50 lap Coupes, "Growlers" - 4pm START TIME!!
 Adults/Teens/Seniors \$20 Presented by: General Auto Salvage

Schedule Subject To Change

SUNDAY OCTOBER 11th 1:00pm **10th Annual FUNDAY-SUNDAY** 4/6 Cylinder Enduro, Demolition Derby & MORE Adults/Teens/Seniors \$15.00 Presented by: TBA

2026 Schedule & highlighted special events

July 4th Extravaganza
Fireworks courtesy of Noise R Us
 Dennis Preston Memorial
Sportsman Modifieds MADNESS
 DIRTcar Sportsman Modifieds & Sportsman Coupes
 Sportsman Mods Limited, Xtreme Midgets
 Late Models, Dirt Stocks & Ridge Runners
 Special Event Pricing:
 Adults/Teens/Seniors \$20.00
 Kids 11 & under \$2.00 w/paying adult



JULY 9th 3rd ANNUAL BULL RIDING RODEO
FEATURING POND HILL RANCH RODEO
SHOW STARTS AT 7:00
GATES OPEN AT 5:00
GENERAL GRANDSTAND SEATING \$20.00
 presented by Wells River Chevrolet
 part of the Auto Saver Group

DIRTcar Sportsman Modifieds
King of the Hill points Competition
 presented by Optical Expressions Barre VT
August 29th
 Plus Sportsman Coupes, Dirt Stocks, Late Models,
 Dirt Stocks, Ridge Runners & SCoNE
 Special Event Pricing:
 Adults \$20.00 Teens/Seniors \$18.00
 Kids 11 & under \$2.00 w/paying adult

check our website
 for special show admission prices
 race day phone 802/222-4052
 facebook.com/bearridgespeedway
www.bearridgespeedway.com

We are an alcohol-free family-friendly entertainment spot, where we continue to strive to offer the best source of good-inexpensive-high-quality entertainment for families.
 Take exit 16 off I-91 on to rt. 25 west 1 mile to South Rd up the hill to Kidder Rd. Take right on to Kidder and follow the traffic!
 The price of a regular show general admission (front gate) ticket for adults (ages 16 to 61) \$15. Teens 12 to 15 \$13. & kids 11 & under \$2. BOTH w/paying adult Seniors 62 & older \$13.
 please check our website for special show admission prices
 race day phone 802/222-4052 brsdirt@gmail.com www.bearridgespeedway.com

59th consecutive year of racing

Racing starts at our famous 6:00pm(ish) Pit Gates open at 3:00 Grandstands at 4:00



Paths and Rail Trails

Triangle Bike Loop - 40 miles

Vergennes to Bristol to Middlebury to Vergennes
www.walkbikeaddison.org/triangle_bike_loop

Island Line Trail - 14 miles

Follows the waterfront via the Burlington Greenway and takes user all the way to South Hero, crossing Lake Champlain on the Colchester Causeway
www.localmotion.org/island_line_trail_map

Stowe Recreation Path - 5 miles

Easy and convenient way to explore Stowe on foot or wheels.

Montpelier Recreation Path - 2 miles

Paved path stretching through downtown Montpelier.

Lamoille Valley Rail Trail - 95 miles

New England's longest rail trail connecting 18 communities.

Missisquoi Valley Rail Trail - 27 miles

Wanders through the villages, farms, forests, fields and wetlands of Franklin County.

Beebe Spur Rail Trail - 6 miles

From downtown Newport to near the Canadian border following a historic railroad bed.

Delaware & Hudson Rail Trail - 20 miles

Tour the villages of Castleton, Poultney, West Pawlet and part of New York State.

Mountain Biking

Milestone Trails

www.millstonetrails.org
A network of non-motorized recreational trails in Central Vermont of diverse and dramatic terrain.

Kingdom Trails

www.kingdomtrails.org
100+ mile network of quality, non-motorized, multi-use trails for all levels of ability, incorporating the best of our local scenery and natural diversity.

Grafton Trails

www.graftoninnvermont.com/southern-vt-trails-outdoors
A network of hiking, biking and ski trails right in the town of Grafton.

Cady Hill Forest

stowetrails.org/cady-hill-forest
Stow Trails Partnership's flagship trail network; its diverse terrain, great views, easy access from Town and the Stowe Rec Path, and trails that cater to just about any level of rider make it one of the most ridden trail networks in the northeast.

Perry Hill

www.waterburytrails.com/trails
10 mile network in Waterbury offering classic tech rock lines and rewarding climbs.

Pine Hill Park

www.pinehillpartnership.org
19 miles of single-track trail spread over 325 acres of terrain offering some of the very best mountain biking around Rutland.

Slate Valley Trails

www.slatevalleytrails.org
60 miles of public hiking and biking trails in Poultney, Castleton, and Wells.

The Driving Range

www.richmondmountaintrails.org/the-driving-range
Vermont's first fully accessible mountain biking trail, universal building design, adrenaline-pumping jump trail, progressive features, and miles of new terrain to explore in Richmond.

Lift-served Mountain Biking

Stratton Bike Park

www.stratton.com/Plan-your-trip/Bike-Park
This summer, get your fill of berms, jumps, and downhill thrills at Stratton Bike Park. Choose from lift tickets or season passes, group and private lessons, and top-tier rentals to rip through 10+ miles of features designed by Sinuosity, notable trail builders from Vermont.

Bolton Valley Mountain Bike Park

www.boltonvalley.com/summer/mountain-biking
27 downhill trails, including a green trail from top to bottom. Lessons and rentals available. E-bikes welcome.

Killington Bike Park

www.killington.com/bike-park-tickets
New England's longest running and most progressive lift-served mountain biking. Over 40 miles of trail designed for all skill levels — from flow trails to technical freeride. Trail access must be purchased at the Snowshed Lodge guest services windows.

Burke Mountain Bike Park

www.skiburke.com/bike-park
24 trails. 10 lift-served. Beginner flow to expert technical. Multiple ways onto the mountain. Buy online and skip the ticket window. Less time in line, more time on the mountain.



Recreating close to home

You don't have to travel far to feel better.

More people are discovering that nearby parks, trails and open spaces offer something increasingly valuable: a direct, reliable way to improve both personal health and environmental well-being.

The physical benefits are straightforward. Regular time outdoors — whether it's walking, biking, or paddling — supports cardiovascular health, improves sleep and boosts overall fitness. But what's often overlooked is how much easier it is to maintain those habits when nature is close by. A 20-minute walk after dinner or a quick morning loop on a local trail is far more sustainable than occasional, large-scale outings.

Mental health gains are just as significant. Studies consistently show that time in green space reduces stress, lowers anxiety and improves mood. Even brief exposure to natural environments can help reset attention and reduce mental fatigue. In a world where many people feel constantly overstimulated, nearby nature provides a rare opportunity to slow down without requiring major time or financial investment.

There's also a social dimension. Local parks and trails create shared spaces where people connect, informally but meaningfully. Everyone can benefit from environments that encourage movement and interaction without pressure or cost.

Choosing to recreate locally also has a measurable environmental

impact. Shorter travel distances mean fewer emissions. A quick bike ride to a trailhead or a walk to a neighborhood park reduces reliance on cars, cutting down on fuel use and air pollution. Multiply that behavior across a community and the effect becomes substantial.

Local recreation also builds environmental awareness. When people spend time in nearby natural spaces, they're more likely to notice changes, such as erosion on a trail, litter in a creek or shifts in plant and animal life. That awareness often leads to stewardship. People protect what they regularly experience.

Communities benefit, too. Increased use of local green spaces can support funding, maintenance and conservation efforts. When residents value these areas, they're more likely to advocate for their protection and improvement.

Increased use, however, must come with responsibility. Staying on marked trails, properly disposing of waste and respecting wildlife are essential practices. The goal is not just to enjoy these spaces but to ensure they remain healthy and accessible.

Health—both personal and environmental—is built through consistency, not intensity. And the easiest way to be consistent is to start where you are.

The most powerful connection to nature isn't the one you plan months in advance. It's the one you return to, again and again, just a few minutes from your front door.

Farmers Markets

Sunday

Dorset Farmers Market — 10 a.m.-2 p.m.
Glover Farmers Market — 11 a.m.-2 p.m.
Ludlow Farmers Market — 9 a.m.-1 p.m.
Putney Farmers Market — 11 a.m.-3 p.m.
Royalton Farmers Market — 11 a.m.-2 p.m.
Stowe Farmers Market — 10 a.m.-2 p.m.
Westford Farmers Market — 3 p.m.-6 p.m.
Winooski Farmers Market — 10 a.m.-2 p.m.

Monday

Bristol Farmers Market — 3 p.m.-7 p.m.
Westmore Farmers Market — 3 p.m.-6 p.m.

Tuesday

Milton Farmers Market — 4 p.m.-8 p.m.
Northfield Farmers Market — 3 p.m.-6 p.m.
Old North End Farmers Market — 3 p.m.-6:30 p.m.
West Hartford Library Farmers Market — 3:30 p.m.-6:30 p.m.

Wednesday

Addison County Farmers Market — 2 p.m.-5:30 p.m.
Barre Farmers Market — 3:30 p.m.-6:30 p.m.
Champlain Islands Farmers Market — 3 p.m.-6 p.m.

Danville Farmers Market — 3:30-7 p.m.
Essex Parks & Rec Farmers Market — 3:30 p.m.-6 p.m.
Jeffersonville Farmers Market — 4 p.m.-7 p.m.
Market on the Green-Woodstock — 3 p.m.-6 p.m.
Newport Farmers Market — 9 a.m.-2 p.m.
St. Johnsbury Farmers Market — 3 p.m.-6 p.m.

Thursday

Jericho Farmers Market — 3 p.m.-6:30 p.m.
Manchester Farmers Market — 3 p.m.-6 p.m.
Vergennes Farmers Market — 3 p.m.-6:30 p.m.

Friday

Arlington Village Farmers Market — 4 p.m.-7 p.m.
Brandon Farmers Market — 9:30 a.m.-2:30 p.m.
Chelsea Farmers Market — 3 p.m.-6 p.m.
East Dover Farmers Market — 4 p.m.-7 p.m.
Hardwick Farmers Market — 3-6 p.m.
Hartland Farmers Market — 4 p.m.-7 p.m.
Lyndon Farmers Market — 3 p.m.-6 p.m.
Plainfield Farmers Market — 4 p.m.-7 p.m.
Richmond Farmers Market — 3 p.m.-6:30 p.m.
South Burlington Farmers Market — 5 p.m.-7 p.m.
Townshend Farmers Market — 4:30 p.m.-6:30 p.m.
Bellows Falls Farmers Market — 4 p.m.-7 p.m.

Saturday

Bennington Community Farmers Market — 10 a.m.-2 p.m.
Brattleboro Area Farmers Market — 9 a.m.-2 p.m.
Burlington Farmers Market — 9 a.m.-2 p.m.
Capital City Farmers Market — 9 a.m.-1 p.m.
Champlain Islands Farmers Market — 10 a.m.-2 p.m.
Craftsbury Farmers Market — 10 a.m.-1 p.m.
Marshfield Farmers Market — 10 a.m.-1 p.m.
Middlebury Farmers Market — 9 a.m.-12:30 p.m.
Montgomery Farmers Market — 9:30 a.m.-1 p.m.
Morrisville Farmers Market — 9 a.m.-1 p.m.
Mount Tom Farmers Market — 9:30 a.m.-12:30 p.m.
Newport Farmers Market — 9 a.m.-2 p.m.
Northwest Farmers Market — 9 a.m.-2 p.m.
Norwich Farmers Market — 9 a.m.-1 p.m.
Peacham Farmers Market — irregular
Randolph Farmers Market — 9 a.m.-1 p.m.
Rutland County Farmers Market — 9 a.m.-2 p.m.
Shelburne Farmers Market — 9 a.m.-200 p.m.
St. Johnsbury Farmers Market — 9 a.m.-1 p.m.
Vermont Farmers Market: Rutland — 9 a.m.-2 p.m.
Waitsfield Farmers Market — 9 a.m.-1 p.m.
West River Farmers Market — 9 a.m.-1 p.m.

Vermont Craft Beverages

1st Republic Brewing Co. — 39 River Rd., Suite 6, Essex Junction, 802-857-5318, www.1strepUBLICbrewingco.com

14th Star Brewery — 133 North Main St., St. Albans, 802-528-5988, www.14thstarbrewing.com

The Alchemist - Stowe Brewery and Visitors Center — 100 Cottage Club Rd., Stowe, 802-244-7744, alchemistbeer.com

American Flatbread Burlington Hearth & Mothership Brewery — 115 Saint Paul Street, Burlington, 802-861-2999, www.burlington.americanflatbread.com

Barr Hill by Caledonia Spirits — 116 Gin Ln., Montpelier, 802-472-8000, www.barrhill.com

Bent Hill Brewery — 1972 Bent Hill Rd., Braintree, 802-565-5103, www.benthillbrewery.com

Beer Naked Brewery — 7678 VT-Rte 9, Marlboro, 802-464-7702, www.beernakedbrewery.com

Black Flannel Brewing Company — 21 Essex Way # 201, Essex Junction, 802-857-5629, www.blackflannel.com

Boyden Valley Winery and Spirits — 64 VT Route 104, Cambridge, 802-644-8151, www.boydenvalley.com

Brocklebank Craft Brewing — 357 Dickerman Hill Rd., Tunbridge, 802-685-4838, www.brocklebankvt.com

Burlington Beer Company — 180 Flynn Ave., Burlington, 802-863-2337, www.burlingtonbeercompany.com

Champlain Orchards — 3597 Rte. 74W, Shoreham, 802-897-2777, www.champlainorchards.com

Copper At Dorset — 100 Dorset St., South Burlington, www.copperatdorset.com

Devil Takes a Holiday — 111 Saint Paul Street, Burlington, 802-555-5555, www.deviltakesaholiday.com

Drop-In Brewing Company — 610 Route 7, Middlebury, 802-989-7414, dropinbrewing.com

Eden Specialty Ciders — 150 Main St., Newport, 802-334-4231, www.edenciders.com

Ellison Estate Vineyard — 69 East Shore N., Grand Isle, 802-760-9111, www.ellisonestatevineyard.com

EO Randall General Store — 161 County Rd., West Glover, 508-596-4209, www.echodalefarm.com

Fable Farm and Fermentory — 1525 Royalton Tpk., Barnard, 802-234-5288, www.fablefarmfermentory.com

Fiddlehead Brewing Company — 6305 Shelburne Rd., Shelburne, 802-399-2994, www.fiddleheadbrewing.com

Foam Brewers — 112 Lake Street, Burlington, 802-399-2511, www.foambrewers.com

Foley Brothers Brewing — 79 Stone Mill Dam Road, Brandon, 802-247-8002, www.foleybrothersbrewing.com

Four Quarters Brewing — 70 Main St., Winooski, 802-391-9120, www.4qbc.com

Frost Beer Works — 171 Commerce St., Hinesburg, www.frostbeerworks.com

Golden Rule Brewing — 8 Elm St., Middlebury, www.goldenrulebrew.com

Good Measure Brewing Co. — 17 East St., Northfield, 802-485-4600, www.goodmeasurebrewing.com

Harpoon Brewery — 336 Ruth Carney Dr., Windsor, 802-674-5491, www.harpoonbrewery.com/windsor-brewery

Hermit Thrush Brewery — 29 High Street, Ste. 101C, Brattleboro, 802-257-2337, www.hermitthrushbrewery.com

Hill Farmstead Brewery — 403 Hill Rd., Greensboro, 802-533-7450, www.hillfarmstead.com

Hogback Mountain Brewing — 372 Rockydale Rd., Bristol, 802-643-2304, www.hogbackbrew.com

Kingdom Brewing — 353 Coburn Hill Rd., Newport, 802-334-7096, www.kingdombrewingvt.com

Lawson's Finest Liquids — 155 Carroll Rd., Waitsfield, 802-496-4677, www.lawsonsfine.com

Lincoln Peak Vineyard — 142 River Rd., New Haven, 802-388-7368, www.lincolnpeakvineyard.com

Long Trail Brewing Company — 5520 Route 4, Bridgewater Corners, 802-672-5011, www.longtrail.com

Lost Nation Brewing — 87 Old Creamery Rd., Morrisville, 802-851-8041, www.lostnationbrewing.com

Lot Six Brewing Company — 4087 Vermont 108 South, Jeffersonville, 802-335-2092, www.lotsixbrewing.com

Mad River Distillers — 89 Mad River Green, Waitsfield, 802-489-5501, www.madriverdistillers.com

Mad River Distillers Burlington Tasting Room — 137 St. Paul St., Burlington, 802-489-5501, www.madriverdistillers.com

Madison Brewing Company — 428 Main St., Bennington, 802-442-7397, www.madisonbrewingco.com

Mill River Brewing — 10 Beaugard Dr., St., Albans City, 802-582-4182, www.millriverbrewing.com

Montview Vineyard — 102 Flanders Ln., Corinth, 802-439-6160, www.montviewvineyard.com

Neshobe River Winery — 79 Stone Mill Dam Rd., Brandon, 802-247-8002, www.neshoberiverwinery.com

Otter Creek Brewing Company — 793 Exchange St., Middlebury, 802-388-0727, www.ottercreekbrewing.com

Outer Limits Brewing — 60 Village Green, Proctorsville, 802-287-6100, www.outerlimitsbrewing.com/home

Putney Mountain Winery — 8 Bellows Falls Road, Putney, 802-387-5925, www.putneymountainwinery.com

Queen City Brewery — 703B Pine St., Burlington, 802-540-0280, www.queencitybrewery.com

Red Barn Brewing — 2211 US-2, Danville, 802-227-3031, www.redbarnbrewingvt.com

Red Clover Ale Company — 43 Center St., Brandon, 802-465-8412, www.redcloverale.com

River Roost Brewery — White River Junction, 802-698-8715, www.riverroostbrewery.com

Rock Art Brewery — 632 Laporte Rd./Rt. 100, Morrisville, 802-888-9400 www.rockartbrewery.com

Rutland Beer Works — 136 Granger St., Rutland, 802-665-7794, www.rutlandbeerworks.com

Saxtons River Distillery — 155 Chickering Dr., Brattleboro, 802-246-1128, www.saxtonsdistillery.com

Seedy Fruit Wine Company — 7 Sanderson Rd., Milton, 802-893-3212

SILO Distillery — 3 Artisans Way, Windsor, 802-674-4220, www.silodistillery.com

Simple Roots Brewing — 1127 North Avenue, Suite 8, Burlington, 802-399-2658, www.simplerootsbrewing.com

Smugglers' Notch Distillery — 5087 Vermont RT 15, Jeffersonville, 802-309-3077, smugglersnotchdistillery.com

Snow Farm Vineyard & Distillery — 190 West Shore Rd., South Hero, 802-372-9463, www.snowfarm.com

Snow Republic Brewery — 33 Route 100, West Dover, 802-222-0932, www.snowrepublikbrewery.com

Soulmate Brewing Company — 74 Portland St., Morrisville, 802-851-8569, www.soulmatebrewing.com

Stone Corral Brewery — 83 Huntington Rd., Richmond, 802-434-5787, www.stonecorral.com

Sunrise Orchards — 1333 North Bingham St., Cornwall, www.sunriseorchards.com

Switchback Brewing Co. — 160 Flynn Ave., Burlington, 802-651-4114, www.switchbackvt.com

Ten Bends Beer — 590 East Main Street, Hyde Park, 802-521-7139, www.tenbendsbeer.com

Two Heroes Brewery & Public House — 252 US Rte. 2, South Hero, www.twoheroesbrewery.com

Upper Pass Beer Company — 228 Chelsea Street, South Royalton, 802-763-0010, www.upperpassbeer.com

Vermont Beer Makers — 100 River St., Springfield, 802-885-6613, www.vermontbeermakers.com

Vermont Cider Lab — 25 Essex Way, Suite

214, Essex, www.vtciderlab.com

Vermont Distillers — 7755 VT Route 9, Marlboro, 802-464-2003, www.vermontdistillers.com

Vermont Distillers & Smugglers' Notch Distillery Tasting Room — 28 Church Street, Burlington, 802-861-2071, www.vermontdistillers.com/church-street-burlington-store

Vermont Pub & Brewery — 144 College St., Burlington, 802-598-3184, www.vermontbrewery.com

Vermont Spirits Distilling Co. — 5575 Woodstock Rd., Quechee, 802-281-6398, www.vermontspirits.com

Village Garage Distillery — 107 Depot St., Bennington, www.villagegarage.com

von Trapp Brewing — 1333 Luce Hill Road, Stowe, 802.253.5750, www.vontrappbrewing.com

von Trapp Brewing Bierhall — 1333 Luce Hill Road, Stowe, 802-253-5750, www.vontrappbrewing.com/bierhall.htm

Whaleback Vineyard — 202 Old Lake Rd., Poultney, 802-287-2256, www.whalebackvineyard.com

Whetstone Beer Co. — 36 Bridge St., Brattleboro, 802-490-2354, www.whetstonebeer.com

WhistlePig Pavillion — 7416 Mountain Rd., Stowe, 802-760-4730, www.sprucepeak.com/dine/whistlepig-pavilion

Woodchuck Cider House — 1321 Exchange St., Middlebury, 802-398-2090, www.woodchuck.com

Zero Gravity Pine Street Brewery — 716 Pine Street, Burlington, 802-497-0054, www.zerogravitybeer.com



At Bragg Farm learn about eight generations of maple sugaring from the Bragg Family!

Enjoy free maple tours and tastings. See our great display of old sugaring tools and see our nearby maple trees. All ages will enjoy our large gift shop, friendly farm animals, picnic area, and ...

"World's Best"
Maple Creemees!
Served 7 Days
a Week!



Exit 8 off I-89
5 miles on US Rt 2E, bear left,
1 mile on Vt. Rt. 14N,
1005 Vt. Rt. 14N
East Montpelier 05651

OPEN EVERYDAY

8:30 - 6:00

1-800-376-5757 or 223-5757



www.braggfarm.com • *We Ship Anywhere!*

asiangourmet
Chinese, Thai, Sushi Bar

DINE IN, TAKE OUT OR OUTSIDE DINING (weather permitting)

◆ Sushi ◆ Japanese ◆ Chinese ◆ Thai

MON.-THURS. 11 AM-9:30 PM
FRI. & SAT. 11 AM TO 10 PM
SUN. NOON-9 PM

276 N. Main St Barre
802-477-7828
www.asiangourmetbarre.com

Welcome to Historic **Barre**

BRAGG FARM

SUGARHOUSE & GIFT SHOP

www.braggfarm.com
We Ship Anywhere!
802-223-5757
1 mile north of E. Montpelier Village on Rt. 14 (follow signs)

**Vermont's First
Cat Café**

"Over 1,000 adoptions to date."




KITTY KORNER CAFE
214 N. Main St. Suite #1, Barre
kittykornercafevt@gmail.com
802-622-8988
www.kittykornercafe.com

Dente's & More

Collectibles • Beverages • VT Lottery



BAKERY OUTLET FOR
MS. MARTEL'S GOURMET COOKIES



406 N. Main St., Barre, VT 05641
(802) 476-3764 Rick Dente: Prop.

**Bury the Needle
TATTOO**

136 N. MAIN ST., SECOND FLOOR
SIDEWALK VILLAGE
BARRE, VT 05641

802-622-0204
E-MAIL: inkinwood@yahoo.com

Aldrich Library

6 Washington Street
802-476-7550 | www.aldrichpubliclibrary.org



Located in the heart of Barre overlooking City Hall Park, the Aldrich Public Library is Barre's lifelong learning headquarters and community center. With programs and services for all ages and special events throughout the year, there's something for everyone at the library. Bring the kids to story hour, use our high speed internet to stay in touch with folks out of town, try something new at one of our programs, or just relax with a good book and enjoy the beauty of our historic building.

Barre Opera House

6 N. Main Street
802-476-0292 | barreoperahouse.org



The 650-seat Barre Opera House, a cultural center for central Vermonters since 1899, is home to approximately 50 shows and events each year. The theater, on the National Register of Historic Sites since 1973, hosts a diversity of events from local theater and orchestra to internationally known performers.

Simply
HouseMade and Catering



SERVING BREAKFAST, LUNCH & DINNER
Best Subs & Pizza

BARRE
North Main Street
479-5920
OPEN 7 DAYS A WEEK
www.simplysubs.us



WE DELIVER BREAKFAST
THROUGH OUR WEBSITE
Check Us Out On The Web!

Barre Civic Center

20 Auditorium Hill
802-477-5055

The Barre Civic Center is located on Auditorium Hill in the heart of Barre City. The Civic Center is a municipally run complex that supports year round events, bringing thousands of people into the City each month. The complex consists of three buildings, the Auditorium, B.O.R. and Alumni Hall.

Auditorium Complex

The Auditorium is our most versatile building with two floors of space. It is equipped with a full gymnasium with a regulation size basketball court and locker rooms, an 18'w X 54'l stage, a commercial kitchen, and ample space for vendors and displays. It serves as a multi-purpose facility for events such as state high school basketball championships, concerts, trade shows, farm shows, craft fairs, bingo games, racing shows, auctions, annual meetings, town fairs, flu clinics, company parties, graduations and more. The Auditorium is accessible with an elevator that allows access to the ground floor, main level and the balcony.

B.O.R.

The B.O.R. serves as an excellent site for shows from mid April to early October and as an ice arena from mid-October to early March. A 15 foot overhead door in the front of the building allows for easy exhibit set-ups and tear downs. The arena has 21,500 square feet of open space all on one level. Approximately eight hundred people can view any event from the heated bleacher seating. Indoor Turf is available from the first of April until late October. This allows for sports such as softball, baseball, lacrosse, soccer and other groups the opportunity to practice and play in a warm, dry and safe indoor arena.

Alumni Hall

Our Alumni Hall is connected to the Auditorium Complex. Designed to maximize meeting space, this building compliments any trade show looking for breakout rooms or space for smaller lectures, or day seminars.

**NELSON
ACE
HARDWARE**

BARRE **BP** PARTNERSHIP

Your Complete Work & Play
188 N. Main • Barre • 802-476-5700
• OPEN EVERY DAY •

Barre Labor Hall

46 Granite Street

802-479-5600 | oldlaborhall.org

Barre's Old Labor Hall, a National Historic Landmark, is located at 46 Granite Street in downtown Barre. Built in 1900 as a community center and cooperative grocery and bakery by Italian granite workers, the Hall is owned by the Barre Historical Society. Open by appointment and available for community and private events, the Hall is handicapped accessible with kitchen, tables, chairs and on site parking.

Firehouse Museum

8 S. Main Street

The former Barre Fire Station is patterned after a station in Quincy, Massachusetts. Construction was complete in 1905 at a total cost of \$24,000 and included eight stalls for horses. The original unique weathervane of a "flying horse-drawn hook and ladder wagon" can be seen at the Historical Society. A replica weathervane now graces the hose tower which looks like a church belfry. It was purchased in 2006 and has been transformed into a restaurant and inn.

The Reynolds House Inn

802-622-0201

www.reynoldshouse1892.com



The Reynolds House Inn is Barre's place to have people over. With so many well appointed rooms you can visit with family and friends comfortably without feeling crowded or on top of one another.

Five beautiful bedrooms each with their own bathrooms means you don't have to worry about where your guests will stay. You don't have to stress over cleaning and cooking when you come to the Reynolds House Inn all you have to do is entertain your guests.

Cleora's Carriage House is the perfect spot for you to gather family, friends, or colleagues to have a dinner, have a meeting, or have a party!

Studio Place Arts

201 N. Main Street

802-479-7069 | www.studioplacearts.com



Studio Place Arts (SPA) is a vibrant, 3-floor visual arts center in historic, downtown Barre. Explore free exhibitions of a broad range of contemporary artwork, meet working resident artists, and explore your own creativity in art classes or workshops. For a schedule of the current

exhibits, go to the SPA website. While visiting Barre, take the Art Stroll and view stone sculptures. Obtain an Art Stroll Map at SPA or go to the SPA website for a map and slideshow.

Vermont History Center and Library

60 Washington Street

802-479-8500 | vermonthistory.org

Connect to your own story! Make an appointment at the Vermont Historical Society Library, which holds an unparalleled selection of Vermont resources. Explore Barre's history in the archives, or learn more about your family with our extensive genealogical resources. Start your research journey at vermonthistory.org. Tuesday - Friday and Second Saturdays, 9 a.m. - 4 p.m. Closed on state and federal holidays.

Vermont Granite Museum

7 Jones Bros. Way

802-476-4605 | www.vtgranitemuseum.org

The Vermont Granite Museum, a family friendly destination, is on the property of Jones Brothers Company, which made monuments and architectural elements for nearly a century. The museum offers an indoor climbing wall, interactive exhibits, activities, outdoor games, ¾-mile trail, and pedal cars for all ages. Exhibits at the museum highlight Vermont's granite industry and the people that made it possible.

May thru October, Tuesday-Saturday, 10 a.m. - 4 p.m.

PEARL STREET PIZZA

Tues. - Thurs
Noon-8
Fri. & Sat.
Noon-9

Outside Dining
Weather
Permitting

Inside AR Market - 159 N. Main St. Barre, VT
802-622-8600
pearlstreetpizza.com



Emslie's



260 N. Main St, Suite 20

Barre, VT 05641

802.476.3126

www.emslietheflorist.com

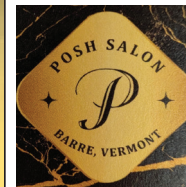
Richard J. WOBBY JEWELERS

QUALITY GIFTS FOR EVERY OCCASION

124 NORTH MAIN ST., BARRE, VT 05641

(802) 476-4031

www.RichardJWobbyJewelers.com



Now Owned
& Operated by
Autumn Toro
Owner/Stylist

59 N. Main St., Downtown Barre • 802-261-7935

Monday - Saturday by appointment. Book online.

www.poshsalonvt.com



YOUR SUMMER DRINK HEADQUARTERS
COLD DRINKS
Sandwiches & Treats, Too!



DUNKIN'

Montpelier 223-0928

Berlin 622-0250 • Barre 622-0730

Home Grown Scales

• Reptiles & Fish • Pets & Supplies
• Consults & Aquarium Maintenance
OPEN EVERY DAY 9:30-6:00

379 So. Barre Rd., Barre, VT

802-622-8040

HomeGrownScales.com

Gear Up For Your Adventures



359 N Main St, Barre, VT 05641

802-476-7446

SHOP ONLINE

LennyShoe.com

Tatro's Appliance

Sales, Service and Parts

From installs to complete remodels, quality is our goal. We are your best source for parts, accessories & appliances.



272 Morrison Road

Barre, VT 05641

www.tatrosaces.com

mark@tatrosaces.com

802-476-1416

Barre's Famous Downtown Diner!

We Host Benefit Drives each month for Non-Profits!

This month "Passion for Paws"

Next month "Boston Children's Hospital"



OPEN 7 AM-2PM
Thurs., Fri., Sat., Sun.,
& Mon.

81 N. Main St.
Barre



802-249-5958

tastybites21@yahoo.com

Outdoors

Miniature Golf

Around the World Miniature Golf — 58 Beach Rd, Lake George, NY, 518-668-2531, www.aroundtheworldgolf.com

Blackbeard's Cove Adventure Golf — 101 Mulberry St Suite H, Claremont, NH, www.pirateminigolfnh.com

Champ's Trading Post Extreme Mini Golf — 6449 Vt. Route 17 W. Addison, VT 05491, (802) 759-2566, www.facebook.com/champstradingpost

Fore-U Golf Center — 298 N. Plainfield, Rd., West Lebanon, NH, 603-298-9702, www.foreugolf.com

Goony Golf — 2059 US-9, Lake George, NY, 518-668-2700, <https://goonygolf.com>

Hillbilly Fun Park — 10375 NY-149, Fort Ann, NY, 518-792-5239, www.hillbillyfunpark.com

Lumberjack Pass Miniature Golf — 1511 US-9, Lake George, NY, 518-793-7141, www.lumberjackminigolf.com

Mendon Mini Golf & Snack Bar — 2556 US Route 4 Across from Sugar and Spice Restaurant, Mendon, VT 05701-6615, 802-712-4297, www.mendonminigolf.com

Okemo's Adventure Zone: Lumberin' Cal Miniature Golf — 11 Jackson Gore Rd., Ludlow, 802-228-1600, www.okemo.com/explore-the-resort/activities-and-events/summer-activities/miniature-golf.aspx

Otter Creek Fun Center — 1800 US Route 7, Danby, 802-293-9200, www.ottercreekfuncenter.com

Pirate's Cove Adventure Golf — 2115 US-9, Lake George, NY, 518-668-0493, www.piratescove.net/locations/new-york/lake-george

Stonehedge Indoor Golf — 172 S Main St, Rutland, 802-779-9595, www.stonehedgeindoorgolf.com



PROVIDED PHOTO OF MENDON MINI GOLF

Relax and enjoy our outdoor seating!



83 Washington St
Barre, VT
802-622-8277

Come in and play!

Our shelves are packed with fun for everyone!



Open
7 days
a week!

Woodbury Mountain Toys

24 State Street, Montpelier

Mon., Tues., Wed., Thur., & Sat. 9:30-5:30;
Fri. 9:30-6; Sun. 10-4



Open until 7 on Thursdays for the Montpelier Ramble

25 Years Of Award Winning Maple Creemees & Housemade Hard Ice Cream



**We Use Premium
Ingredients, Including
Our Own Maple Syrup,
In All Of Our Products**



**Thanks for
voting us
Best of the
Best Creemee
Stand.**

Serving the Largest Portions for the Money!

LegenDairy Maple & Ice Cream, LLC

32 Business Center Road, Williamstown (next to The Pump and Pantry)

802-917-3766

12 PM - 9 PM Monday - Sunday

Spa, Health & Wellness

Align Inn Vermont — 5817 Woodstock Rd., Quechee, www.aligninnvermont.com, 802-295-7600

BHAV Spa — 11 South Main St., Waterbury, www.bhavspa.com, 802-595-9277

CORE Fitness & Wellness Studio — 65 Northgate Ave., Suite 8, Morrisville, www.corefitnesswellness.com, 802-730-6533

Cynthea's Spa Vermont — 129 St. Paul Street, Burlington, www.cyntheaspa.com, 802-238-7524

The Equinox Golf Resort & Spa — 3567 Main St., Manchester Village, www.equinoxresort.com, 802-362-4700

The Essex Resort & Spa — 70 Essex Wy., Essex, www.essexresort.com, 802-878-1100

Green Mountain Holistic Healing — 66 Morrisville Plaza, Suite 3, Morrisville, www.greenmountainholistichealing.com, 802-477-2577

La Bella Derma Skin Care Clinic & Boutique — 25 Winooski

Falls Wy., Suite 108, Winooski, www.labelladermavt.com, 802-735-3031

Melinda Kinzie Sound Healing — 382 Old Hollow Rd, N. Ferrisburgh, www.melindakinzie.com, 646-288-9832

New Spring Farm — 135 Batchelder Barn Rd., Peru, www.newspringfarmvt.com/, 802-824-4380

Newfane Village Yoga — 599 VT Rte 30, Newfane, www.villageyogavt.com, 802-365-9642

Obsidian Medspa & Wellness — 25 Kingsbury Circle, Derby, www.obsidianmedspavt.com, 802-523-3030

Phineas Swann Inn & Spa — 195 Main St., Montgomery Center, www.phineasswann.com, 802-326-4306

Purple Sage — 21 Essex Way, Suite 224, Essex, www.purplesagevt.com, 802-879-1160

Pyramid Holistic Wellness Center — 120 Merchants Row, Rutland, www.pyramidvt.com, 802-775-8080

Rogue Herbalist Academy & Apothecary — 34 Pleasant St., Unit 1, Morrisville, www.rogueherbalist.com, 802-505-3863

Satori Float & Mind Spa — 145 Pine Haven Shores Rd, Ste 1135, Shelburne, www.satorifloatspa.com, 802-498-5555

Thrive Center of The Green Mountains — 68 S. Main Street, Wallingford, 802-446-2499

Topnotch Resort & Spa — 4000 Mountain Rd., Stowe, www.topnotchresort.com, 800-451-8686

Vermont Salt Cave Spa & Halotherapy Center — 48 Main St., Montgomery Center, www.vtsaltcaves.com, 802-326-2283

The Vermont Wedding Barn at Champlain Valley Alpacas — 152 Merino Ln., Bridport, www.champlainvalleyalpacas.org

The Weston — 630 Main Street, Weston, www.theweston-vt.com



Chico's Tacos

TACOS • NACHOS • BURRITOS • ENCHILADAS

Experience the authentic flavors of Southern California Mexican food with our signature tacos. Made with the finest ingredients and bursting with flavor, our tacos are a delight for your taste buds.

~ TACO TUESDAYS! ~
THIRSTY THURSDAYS! (\$10 Margarita, \$5 Beers)



NEW LOCATION!

45 State Street ~ Montpelier VT

Tues. & Wed. 11:30 AM - 8 PM

Thurs. - Sat. 11:30 AM - 9 PM

802-225-6011 • chicostacos802.com

69TH ANNUAL



Vermont
ANTIQUE AND CLASSIC
CAR MEET

Great SUMMER Event



FREE PARKING

AUGUST 7, 8, 9, 2026
FRI. 7AM-5PM; SAT. 7AM-6PM; SUN. 7AM-2PM
Farr's Field, US Rt. 2 Waterbury, Vt

**Hundreds of Show Cars Displayed,
Automotive Flea Market, Car Corral,
Show Car Parade on Field,
Awards Ceremony and Much More!**

ADULT ADM. \$15 US; 16 AND UNDER ARE FREE.
For more information contact: **Chris at 802-223-3104**
cgeeb99@gmail.com • www.vtauto.org
SPONSORED BY THE VERMONT AUTOMOBILE ENTHUSIASTS

Waterbury Sports

Bike clothing & accessories for every rider






Gear and apparel to keep you on the move
46 South Main Street, Waterbury, VT
www.waterburysportsvt.com • (802) 882-8595



PROUDLY SERVING
Est. 1998
CAPITOL GROUND'S CAFE
MONTPELIER VERMONT

CAPITOL GROUND'S CAFE
27 STATE STREET, MONTPELIER, VT
CAPITOLGROUNDS.COM • 802.223.7800

802 COFFEE
BY CAPITOL GROUND'S CAFE SINCE 1998

802 COFFEE ROASTERS
(for online/wholesale only)
802COFFEE.COM • 802.622.8444

CAPITOL GROUND'S IS OPEN 7 DAYS A WEEK! BREAKFAST AND LUNCH ALL DAY!



Photo from: Do Good Fest

Summer Adventures Start in Montpelier

Thursdays all summer:

Downtown Ramble 5-7pm

Saturdays all summer:

Farmers Market on State St

July 3rd:

Parade, live music, food trucks, fireworks

July 8th-Sept 9th:

Wednesdays

Brown Bag Music Series

July 11th:

Do Good Fest

August 23rd:

City-wide scavenger hunt

September 20th:

Porch Fest

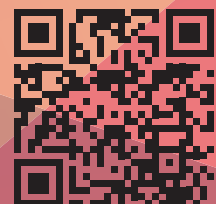


← No FOMO! Scan this QR code to get Downtown Montpelier in your inbox!



Find more events here:

MontpelierAlive.com/Calendar



Make the most of a visit to a fair or carnival

It is fair and carnival season again. Fairs pop up across the country promising food, fun and fellowship. From big-name musical events to carnival rides to food on a stick, there is truly something for everyone in the family.

Attending a fair likely will be on the agendas of individuals and families who are looking to maximize summer. Here are some tips to make the most of these excursions.

Check for deals

Fairs start advertising their dates weeks in advance. Participants should check websites or other avenues to see if there are any discounts for buying admission tickets ahead of time. Also, certain days or times may feature a lower price of admission, or there may be wristbands of family fun packs, so it helps to see if there are such offerings.

Know before you go

Check the event's website to find a schedule of activities, which vendors are available and any other pertinent information. This helps people plan their trips, particularly for multiday fairs or carnivals that may feature different events on different days.

Budget accordingly for fun

A day at the fair for the family is likely to be expensive. From admission to parking to ride tickets to food, there are expenses at every turn. Bringing along extra cash is wise, as some vendors may not accept credit cards.

Check the weather

An overcast or drizzly day may keep the crowds at bay and won't make for a complete fair wash-out. However,

fair-goers should always have an eye on the weather to plan their trips. Pouring rain may shut down many rides. Strong sun can beat down and make the day uncomfortable, so it may be best to arrive in the evening.

Consider carpooling

Parking can be tricky at fairs, which tend to pop up in large, open fields on the outskirts of town. There may be extra fees to park, or the lot may be a significant distance from the entry. By carpooling, expenses can be reduced, and someone can drop off the passengers and then go park the car.

The odds are against you

Playing a few fair games for fun is par for the course. But people should keep in mind that the odds of walking away with the grand prize are low. Set a budget cut-off for spending on carnival games; otherwise, a person may empty their wallets quickly.

Check out the animals

Many fairs feature livestock exhibits or have petting zoos. These animals may be with farmers or agricultural students who can share some information.

Try a new food

Food is one of the main attractions of these seasonal events. People should not be afraid to go out of their comfort zones and try something new or different. You also can keep food costs down by bringing snacks. Some events may have restrictions on which foods and beverages can be brought in. After all, food is a big moneymaker for fair organizers and vendors.

Fairs and carnivals are staples of summertime fun.



Yankee Cooking at its Best Since 1918

Wayside

RESTAURANT BAKERY & CREAMERY

Featuring Nightly
Specials

MANY VERMONT DELICACIES
BARRE-MONTPELIER RD.
802-223-6611

It's all in the Capital City...

Montpelier

VERMONT Sheep & Wool Festival

Oct 3-4, 2026
Tunbridge, VT

vtsheepandwoolfest.org



Zutano
Outlet
Store



79 Main St, Montpelier, VT
802.223.2229



SUGARHOUSE
& GIFT SHOP



www.braggfarm.com
We Ship Anywhere!
802-223-5757

1 mile north of E. Montpelier Village on Rt. 14 (follow signs)



Selling E-Bikes
& Repair All Bikes

(802) 225-6320
92 River St. Montpelier
www.SlopeStyleVt.com

YOUR SUMMER DRINK HEADQUARTERS
COLD DRINKS
Sandwiches & Treats, Too!



DUNKIN'

Montpelier 223-0928
Berlin 622-0250 • Barre 622-0730



HOUSE OF TANG

CHINESE RESTAURANT

"With The Best Reputation In Central Vermont"

114 RIVER STREET
MONTPELIER, VT.
TAKEOUT (802) 223-6020

TUESDAY - SATURDAY 11:30 AM to 8:30 PM

VERMONT'S TRUCKSTORE



WE'VE GOT THE PERFECT SILVERADO FOR YOU!

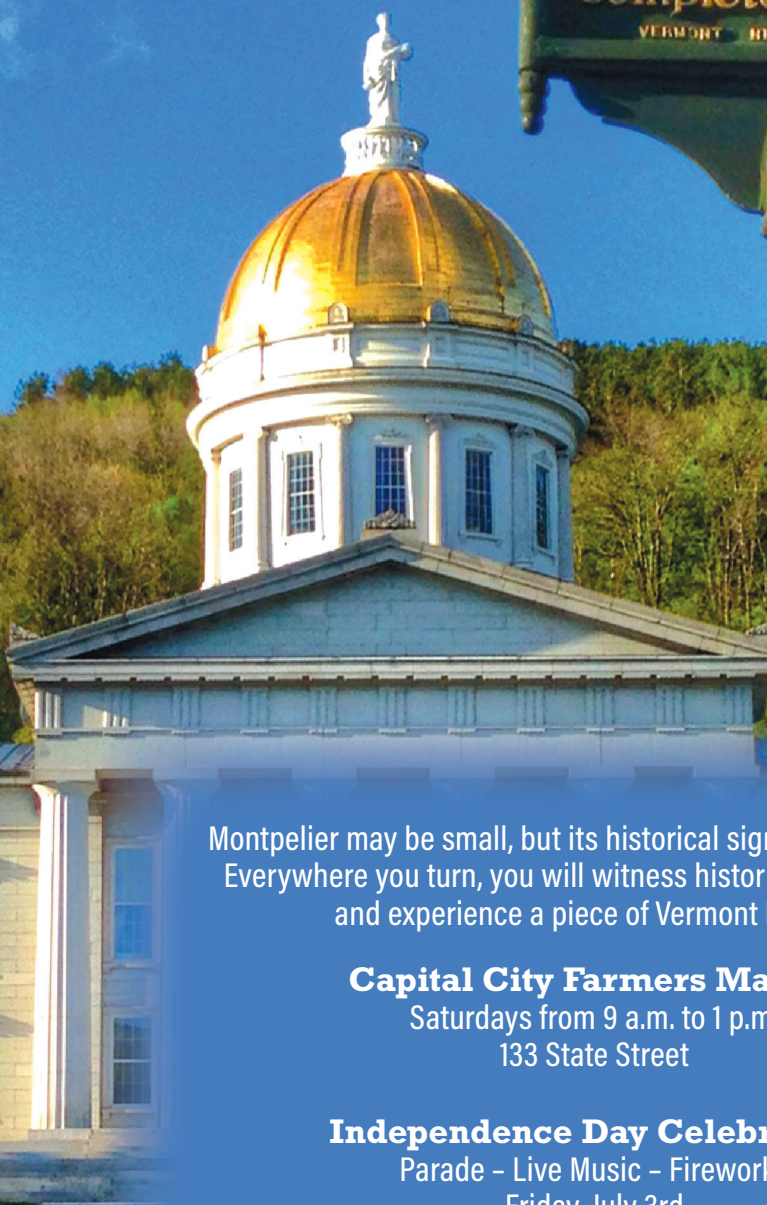


www.codychevrolet.com

BARRE-MONTPELIER RD 802-223-6337

Award
Winning
Auto & Truck
Service

by fire in 1857, was similar to this 3rd structure on the site, completed in 1859.
VERMONT HISTORIC SITES COMMISSION



Montpelier may be small, but its historical significance is great. Everywhere you turn, you will witness historical architecture and experience a piece of Vermont history.

Capital City Farmers Market

Saturdays from 9 a.m. to 1 p.m.
133 State Street

Independence Day Celebration

Parade - Live Music - Fireworks
Friday, July 3rd

Hunger Mountain Co-op Brown Bag

Summer Concert Series
Wednesdays Noon to 1 p.m.
July - September
Christ Church Courtyard

Do Good Fest

Saturday, July 11

Montpelier Alive's Art Walk

Friday, Aug. 7th, Friday, Oct. 2nd and Friday, Dec. 4th

Moonlight Magic

Friday, October TBA

GUY'S FARM & YARD
19 Barre Street, Montpelier
802-229-0567
Monday-Friday 8-6, Saturday 8-5, Sunday 10-2
www.guysfarmandyard.com

MORSE FARM MAPLE SUGARWORKS
The area's original Real Maple Creemees, Sundaees & Shakes
OPEN EVERY DAY
802-223-2740
1-800-242-2740
www.morsefarm.com
1168 County Rd., Montpelier

Splash
DR. HAUSCHKA, JANE IREDALE, & BARE MINERALS. LOVELY CLOTHING & ACCESSORIES FROM AROUND THE WORLD
71 MAIN ST. 802-223-7752

BEAR NAKED GROWLER
40 Beers & Ciders on Draft
Growlers for Take Home!
Pub-style Food
Cornhole & Darts
Free Parking
visit: bearnakedgrowler.com
Riverside Dining on the Deck
16 River St. • Montpelier

CELEBRATING OUR 76th YEAR!
Family founded, owned and operated SINCE 1950
CAPITOL STATIONERS
SINCE 1950
CARDS - UNIQUE GIFTS - VT SOUVENIRS
T-SHIRTS - MAPLE GOODIES - CHOCOLATES
VERMONT MADE GOODS & MORE!
65 Main Street, Montpelier
802-223-2393 • capitolstationers.com

Calendar of Events

JUNE 20

Randolph Farmers Market — Local farmers, growers, bakers, artists and craftsmen. Saturdays through Oct. 24. 9 a.m.-1 p.m. Gifford Medical Center green.

Contra Dance: Northeast Heritage Music Camp Faculty All-Stars — Newcomers 7-7:45 and Contra Dance 8-11. No partner needed. All levels and ages of dancers welcome. Please bring clean soft soled shoes. More info at www.montpeliercontradance.org. 7-11 p.m. Capital City Grange, 6612 Vermont 12, Berlin. 802-225-8921.

Driver, Lender — Adam Driver, famous non-Jewish actor of stage and screen, has been cast as Shylock in *The Merchant of Venice* on Broadway. This satirical play blurs fiction and biography to delve deeply into a controversial but potent question in the artistic world. 2 p.m. and 7 p.m. The Creative Campus at Goddard, Haybarn Theatre, 123 Pitkin Road, Plainfield. 802-793-2092.

Marshfield Farmers Market — Music and workshop 10 a.m.-1 p.m. Jaquith Public Library, 122 School St., Marshfield. 802-426-3581.

LACing Up for Cancer Walk — Kids and adult activities and games, food, entertainment, silent auctions, raffles, luminaria ceremony at dusk and fireworks to cap off the evening. A fun, family-friendly event for all. 1-10 p.m. Peoples Academy High School, 202 Copley Ave., Morrisstown. 802-661-8732.

"Alanis Morissette's Jagged Little Pill" — Performed by Acorn Youth Art. Features a cast of Vermont youth performers alongside experienced members of the local theater community. Pay what you can sliding scale. Performances, June 20 at 2 and 7 p.m.; June 21 at 2 p.m. Barre Opera House, 6 North Main St. Reserve tickets at <https://barreoperahouse.org/jagged-little-pill-presented-by-acorn-youth-arts.html>.

Rutland County Pride Festival — A full day of community, joy, creativity, and connection in downtown Rutland. 10 a.m. 5 p.m. Rutland County Pride, www.rcpride.org.

Joloff and a Drum Circle — Traditional Ghanaian meal including joloff rice, chicken, plantains and salad. Eat in or take out. Drum Circle 3-6 p.m. Barre UU, 19 Church St., Barre. 617-780-2458.

Longest Day 5K — Meeting at JK Adams and then using the Hike Dorset

trail network for a trail run to remember. Walkers are welcome. Help fund our crew. 9 to noon. JK Adams, 1430 Vermont 30, Dorset. 802-681-5567.

Dr. Francois Clemmons visits Inklings Children's Books — 11-11:45 am. 106 Mad River Green, Waitsfield. 802-496-7280.

JUNE 21

Sunday Afternoon Poetry at the Jaquith — Dede Avery & Cindy Ellen Hill — 2-4 p.m. Jaquith Public Library, 122 School St., Marshfield. 802-426-3581.

Driver, Lender — Adam Driver, famous non-Jewish actor of stage and screen, has been cast as Shylock in *The Merchant of Venice* on Broadway. This satirical play blurs fiction and biography to delve deeply into a controversial but potent question in the artistic world. 7 p.m. The Creative Campus at Goddard, Haybarn Theatre, 123 Pitkin Road, Plainfield. 802-793-2092.

All the Rivers - Make Music Day — a global ensemble of immigrant and refugee musicians from 10 countries who now call Vermont home. The group has quickly emerged as a vibrant artistic force for belonging and justice, shaped by the political, environmental, and social pressures facing immigrant communities worldwide. 6:30-8:30 p.m. Free, but ticket reservation encouraged. Chandler Music Hall, at Chandler Center for the Arts, 71 North Main St., Randolph. 802-728-9878. tickets.chandler-arts.org.

"Alanis Morissette's Jagged Little Pill" — Performed by Acorn Youth Art. Features a cast of Vermont youth performers alongside experienced members of the local theater community. Pay what you can sliding scale. 2 p.m. Barre Opera House, 6 North Main St. Reserve tickets at <https://barreoperahouse.org/jagged-little-pill-presented-by-acorn-youth-arts.html>.

Make Music Day Vermont — Brookfield - Come to beautiful Pond Village in Brookfield to Make Music Day Noon-8 p.m. Brookfield Old Town Hall, 93 Stone Road, Brookfield. 802-363-2598.

JUNE 24

Jenny Brook Bluegrass Festival — 25th annual festival, presented by Jenny Brook Productions LLC. The festival is from 10 a.m.-10 p.m. June 24-28, 1 Fairgrounds Lane, Tunbridge. 802-518-2126.

Music On The Hill Concert Series — Last Train to Zinkov, 6:30 p.m.

"Man with a Plan" movie screening with John O'Brien — Join a special evening to celebrate the 30th anniversary of the iconic movie. 7-9 p.m. Brookfield Old Town Hall, 93 Stone Road, Brookfield. 802-363-2598.

JUNE 25

AARP Ride and Connect — Join fellow 50+ bikers for a fun, social ride. We'll ride together at a comfortable, all-abilities-welcome pace, focusing on enjoying the trail, connecting with others, and building community — no speed or distance goals required. 6 miles round trip. Followed by a meet at Lost Nation Brewery. Rain or shine. Bring your own bike. 10 a.m.-noon. Lamoille Valley Rail Trail, Morrisville. Contact AARP Vermont at vtaarp@aarp.org.

JUNE 26

5th annual West Windsor Music Festival — Sakiko Ohashi, artistic director announces the return of the West Windsor, Vermont Music Festival June 26-28. 7 p.m. 22 Brownsville-Hartland Road, West Windsor.

Strawberry Festival — Dinner, dessert, music and dancing. Stop on by the park for dinner and your annual shortcake fix. 4-7 p.m. At the West Burke Village Park on Route 5A (across from Aldrich's General Store).

Plainfield Community Night: Farmers Market, Community Meal and Live Music — Weekly gathering in the heart of the village for all ages 4-7 p.m. Grace United Methodist Church, 13 Mill St., Plainfield.

JUNE 27

Randolph Farmers Market — Local farmers, growers, bakers, artists and craftsmen. Saturdays through Oct. 24. 9 a.m.-1 p.m. Gifford Medical Center green.

Patrisse Cullors' One Person Show: A Work in Progress Production — A work in progress production of artist and abolitionist Patrisse Cullors' one person show. 7 p.m. The Creative Campus at Goddard, Haybarn Theatre, 123 Pitkin Road, Plainfield. 802-793-2092.

Marshfield Farmers Market — with music and workshop 10 a.m.-1 p.m. Jaquith Public Library, 122 School St., Marshfield. 802-426-3581.

Art Social — Enjoy the new shows

and meet the artists and other art enthusiasts. 4:30-6 p.m. Studio Place Arts, 201 North Main St., Barre. 802-479-7069.

Town Wide Lawn Sale and Strawberry Social — Lunch and locally grown strawberry treats on the Common. Yard sale items on the Common and around town. 9-1:30 p.m., Cabot. 802-535-4545.

JUNE 28

Braintree Bluegrass Brunch — Hot Pickin' Party & Kathleen Parks Band. Food, drink, and select craft vendors will be on site. Please leave pets at home. Mountain bike ride with Ridgeline Outdoor Collective at 10 a.m. Grounds open at 11 a.m. Live music noon-3 p.m. Braintree Hill, Braintree. 802-728-9878.

JUNE 30

"Betsy Ross" flag — On the Coburn AMERICA Bridge on Coburn Road, East Montpelier. Short ceremony at 2 p.m.



JULY 1

Sam Bliss Concert — Brivele and Marxist Jargon. 6-7 p.m. Plainfield Town Hall Opera House, 18 High St., Plainfield.

Tri-Branch Celebration of the AMERICA 250th Anniversary of the Declaration of Independence — Day-long events and activities include: a Library of Congress "Declaration of Independence Traveling Exhibit" on display in the Vermont Supreme Court Gallery at 111 State Street; a Naturalization Ceremony in the Supreme Court Courtroom with a candidate from each county taking the naturalization oath; an Overview of the Declaration of Independence presented by the Vermont Supreme Court Justices at 1 p.m. in the Supreme Court courtroom, with livestream component; Kids' games and activities on the Supreme Court and the State House lawn areas from 12-3 p.m., featuring a dunking booth for King George, potato sack and egg on spoon races, cornhole and other games, Vermont figure costume/look-alike contest, face painting, theme arts and crafts, patriotic popsicles and Kids' Vote opportunity; a Panel Program about the three branches of government in the State House Chamber at 3 p.m.; a preview of the Vermont History Museum's "50 for 250" artifacts exhibition on display throughout the day at the Vermont History Museum at 109

State Street; showings of the "1776" musical at 8 a.m. and 1 p.m. at 111 State Street; Tours of the State House and the Vermont History Museum throughout the day; an American and Vermont History Trivia Contest organized by the Vermont Bar Association at 5 p.m. at the Barr Hill Distillery. All events are free and open to the public. Additional details about this event and other 250th celebrations at different courthouses around the state available at <https://www.vtcourts.gov/about-vermont-judiciary/250th-anniversary-declaration-independence>.

Vermont Symphony Orchestra AMERICA "Summer Festival Tour: America 250" — To celebrate the United States' 250th birthday, the Vermont Symphony Orchestra hits the road with Summer Festival Tour: America 250, bringing music to communities across the Green Mountain State. Bring a picnic blanket and relax under sunny skies. Gates open at 5:30 p.m. for picnicking. Concert begins at 7:30 p.m. Saksadena Six Ski Area, South Pomfret, Rain site Woodstock High School. Event details at www.vso.org.

JULY 2

Open Mic at Brookfield Old Town Hall — 6:30-8 p.m. Brookfield Old Town Hall, 93 Stone Road, Brookfield. 802-363-2598.

Open Mic at the Forge — 6-9 p.m. Forge, 10 Prince St, Randolph.

Vermont Symphony Orchestra AMERICA "Summer Festival Tour: America 250" — To celebrate the United States' 250th birthday, the Vermont Symphony Orchestra hits the road with Summer Festival Tour: America 250, bringing music to communities across the Green Mountain State. Bring a picnic blanket and relax under sunny skies. Gates open at 5:30 p.m. for picnicking. Concert begins at 7:30 p.m. Burke Mountain Resort, East Burke. Event details at www.vso.org.

JULY 3

John Masko's Orchestra — Bring a picnic and lawn chair and listen to patriotic tunes presented by the 26-piece John Masko's Orchestra, presented at no charge. The Civil War Hemlocks will be there with their canon to accompa-

ny the 1812 Overture. Living historians from the group will be available for conversation before the concert. President Collidge State Historic Site. For more information visit <https://historicsites.vermont.gov/calendar>.

July 3rd Independence Day Celebration — Food Truck Festival, Family Fest on the State House lawn, Montpelier Mile Road Race, Parade, Live Music, Fireworks. 3-10 p.m., 802-282-2163. www.montpelier-alive.com/july3.

Johnny Rawls & Dave Keller — 7-9 p.m. Vermont State Capitol, 115 State Street, Montpelier.

Vermont Symphony Orchestra AMERICA "Summer Festival Tour: America 250" — To celebrate the United States' 250th birthday, the Vermont Symphony Orchestra hits the road with Summer Festival Tour: America 250, bringing music to communities across the Green Mountain State. Bring a picnic blanket and relax under sunny skies. Gates open at 5:30 p.m. for picnicking. Concert begins at 7:30 p.m. Grafton Trails

and Outdoor Center, Grafton. Event details at www.vso.org.

Plainfield Community Night: Farmers Market, Community Meal and Live Music — Weekly gathering in the heart of the village for all ages 4-7 p.m. Grace United Methodist Church, 13 Mill St., Plainfield.

50 for 250 Exhibit Opening — An exhibit opening for the 50 for 250 exhibit at the Vermont History Museum 10 a.m.-5 p.m. Vermont Historical Society Museum, 109 State St., Montpelier. 802-828-1414.

JULY 4

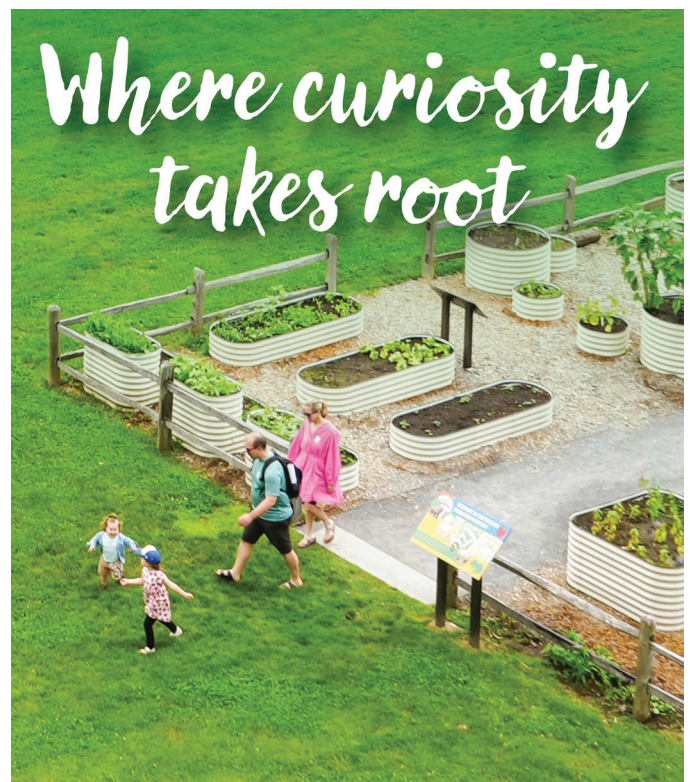
Readings of the Declaration of Independence — At the President Chester A. Arthur, President Calvin Coolidge, Chimney Point, Hubbardton Battlefield, and Mount Independence State Historic Sites, readings will commence at 11:30am. Bennington Battle Monument State Historic Site will host a reading at noon. For more information visit <https://historicsites.vermont.gov/calendar>.

GREENHOUSE NOW OPEN!



SEE US For All Your Garden & Home Improvement Needs

VISIT OUR NEW LOCATION
4732 US 2, East Montpelier (Plainfield Hardware)
802-454-8579 • 802-454-1000 • plainfieldcoop.com



BILLINGS FARM & MUSEUM

BillingsFarm.org • 802-457-2355 • 69 Old River Rd • Woodstock, VT

Calendar of Events Continued

July 4th at President Coolidge State AMERICA Historic Site — free admission for the day to celebrate the birthday of America's 30th president and the 250th anniversary of the signing of the Declaration of Independence. A U.S. Air Force Aerial F-35 Flyover honoring the events of the day is scheduled for the morning as well as a Naturalization Ceremony. For more information visit <https://historicsites.vermont.gov/calendar>.

Friends of the Stowe Free Library — Annual book sale, July 4 through July 25. The book sale is the primary fundraiser for the Friends of the Stowe Free Library. Stowe Free Library, 90 Pond St., Stowe. 802-253-6145.

Randolph Farmers Market — Local farmers, growers, bakers, artists and craftsmen. Saturdays through Oct. 24. 9 a.m.-1 p.m. Gifford Medical Center green.

Monthly Birding Outing (at Horn of the Moon Road) — A casual morning of birding for all interests and experience levels facilitated by NBNC staff and guest leaders. 8-9:30 a.m. Hosted by North Branch Nature Center, 713 Elm St., Montpelier. 802-229-6206.

Contra Dance — Newcomers 7-7:45 and Contra Dance 8-11. No partner needed. All levels and ages of dancers welcome. Please bring clean soft soled shoes. More info at www.montpeliercontradance.org. 7-11 p.m. Capital City Grange, 6612 Vermont 12, Berlin. 802-225-8921.

Marshfield Farmers Market — with music and workshop 10 a.m.-1 p.m. Jaquith Public Library, 122 School St., Marshfield. 802-426-3581.

Vermont Symphony Orchestra AMERICA "Summer Festival Tour: America 250" — To celebrate the United States' 250th birthday, the Vermont Symphony Orchestra hits the road with Summer Festival Tour: America 250, bringing music to communities across the Green Mountain State. Bring a picnic blanket and relax under sunny skies. Gates open at 5:30 p.m. for picnicking. Concert begins at 7:30 p.m. Shelburne Museum, Shelburne. Event details at www.vso.org.

Celebrate America 250 in Morrisville AMERICA town — Fourth of July Celebration with a parade, live music by Red Hot Juba, vendors and fireworks. A free, family-friendly celebration. 11 a.m.-10 p.m. Portland Street, Morrystown, 802-888-6375.

July 4 Celebration — Noon-5 p.m. AMERICA American Legion - Post 250 63, 48 Depot Square, Northfield.

Fourth of July Parade — Warren. AMERICA Details at <https://madrivervalley.com/4th>

July 4 Worcester 250 Celebration AMERICA — Mural celebrating local history on the fire department building; Heritage Fair during the afternoon, featuring wagon rides, presentations of weaving, soap making, spinning, herbal medicine, family finding, line dancing, vintage games and races, culminating with a softball game. Final fireworks show at Ladd Field.

JULY 5

The Richmond Historical Society AMERICA celebrates America 250 — a reading of the Declaration of Independence and ringing the church bell 250 times. The Old Round Church, 25 Round Church Road, Richmond. 802-434-3654.

Vermont Symphony Orchestra AMERICA "Summer Festival Tour: America 250" — To celebrate the United States' 250th birthday, the Vermont Symphony Orchestra hits the road with Summer Festival Tour: America 250, bringing music to communities across the Green Mountain State. Bring a picnic blanket and relax under sunny skies. Gates open at 5:30 p.m. for picnicking. Concert begins at 7:30 p.m. Trapp Family Lodge Concert Meadow, Stowe. Event details at www.vso.org.

JULY 7

Fairlee Community Arts Summer Concert Series: "Flagship Romance" — featuring a different musical performing group each week. Tuesdays through August on the town common. Rain site: Fairlee Town Hall. 6:30-8 p.m. Town Common Road, Fairlee.

JULY 8

Old Constitution House State AMERICA Historic Site — A reading of the Declaration of Independence on the porch at 6 p.m. This reading commemorates the first public reading of America's founding document by Colonel John Nixon on the State House Yard in Phil-

adelphia. The occasion also marks the 249th anniversary of Vermont adopting its own constitution — formalizing a government for the independent republic. For more information visit <https://historicsites.vermont.gov/calendar>.

Bennington Battle Monument — A AMERICA reading of the Declaration of Independence at Bennington Battle Monument at 6 p.m., following a concert by the Army's Marching Band at 4 p.m. For more information visit <https://historicsites.vermont.gov/calendar>.

Nick Cassarino Family Band at The Middlesex Bandstand — Vermont Roots/Folk/Soul. 6:30-8:30 p.m. Middlesex Bandstand, 465 Shady Hill Road, Middlesex.

Vermont Suitcase Company presents 'My Lady of Whims' — Vermont Suitcase Company's live adaptation of the 1925 film 'My Lady of Whims.' By donation. 7-8:30 p.m. Brookfield Old Town Hall, 93 Stone Road, Brookfield. 802-363-2598.

Morrisville Live: Summer Music Series — Free summer concerts. Wednesdays, July 8-Aug.19, 5:30-7:30 p.m. Live music, food and family fun in the heart of the Lamoille Valley. Oxbow Riverfront Park, 257 Portland St., Morristown, 802-888-6375.

JULY 10

Waterbury Arts Fest — a lively outdoor art gallery and street fair with over 100 artist exhibitors, fantastic festival fare, and live music from some of the area's most beloved entertainers. 5-9:30 p.m. Waterbury. waterburyarts-fest.com.

Plainfield Community Night: Farmers Market, Community Meal and Live Music — Weekly gathering in the heart of the village for all ages 4-7 p.m. Grace United Methodist Church, 13 Mill St., Plainfield.

Herbal Pharmacy Weekend Intensive with Betzy Bancroft — Herbal Pharmacy is a hands-on weekend intensive in the art and science of medicine making. Sage Mountain Botanical Sanctuary, Orange. Information: 802-479-9825.

JULY 11

National Life Group Do Good Fest — An unforgettable day of music, food and good vibes with our biggest musical line-up yet. Augustana, Smash Mouth, Toad the Wet Sprocket, Neon Trees, and the Beats for Good grand

prize winner. Food trucks with lots of options, a Nonprofit Village to learn more about the great work happening around our state, our exclusive VIP Lounge, and an epic fireworks show. 1:30-10 p.m. Montpelier, VT. dogood-fest.com.

Collage for Everyone — Explore the art of mixed-medium collage with artist Jane Ellen Reid. \$50. 9 a.m.-1 p.m. Registration required: email judithdirving@gmail.com to register. Brookfield Old Town Hall, 93 Stone Road, Brookfield. 802-363-2598.

Randolph Farmers Market — Local farmers, growers, bakers, artists and craftsmen. Saturdays through Oct. 24. 9 a.m.-1 p.m. Gifford Medical Center green.

Waterbury Arts Fest — a lively outdoor art gallery and street fair with over 100 artist exhibitors, fantastic festival fare, and live music from some of the area's most beloved entertainers. 10 a.m.-4 p.m. Waterbury. waterburyarts-fest.com.

The Spruce Peak Oyster Festival — From the piers to the peak: Bringing the ocean to Stowe. a free, open-air afternoon celebrating oysters, coastal flavors, and summer at Spruce Peak. Featuring some of the most celebrated oyster farms on the East Coast, the festival invites guests to explore, taste, and enjoy the day at their own pace. Skip the lines: Buy your tokens in advance. Spruce Peak, Stowe. sprucepeak.com/oysterfest.

Marshfield Farmers Market — with music and workshop 10 a.m.-1 p.m. Jaquith Public Library, 122 School St., Marshfield. 802-426-3581.

JULY 12

Hubbardton Battlefield State Historic Site — will transport visitors back to July 1777, when colonial forces faced off against the British in one of the most successful rearguard actions in American military history. Reenactors will demonstrate military tactics, including a large demonstration of the battle on Sunday, July 12 at 8 a.m. or more information visit <https://historicsites.vermont.gov/calendar>.

JULY 13

47th annual Middlebury Summer Festival on-the-Green — Come for the music, stay for the community. 47th annual Festival on-the-Green during the week of July 12-18. Middlebury Village Green, 3 Main St., Middlebury.

Responsible recreation

As more people head outdoors, one principle is becoming increasingly important: responsibility.

Public lands are seeing record use, and with that comes increased pressure on ecosystems, infrastructure and wildlife. Managing that impact requires a collective effort from visitors.

The concept is simple: enjoy nature without damaging it.

That starts with preparation. Planning trips in advance helps visitors understand site conditions, regulations and limits, reducing overcrowding and environmental strain.

Basic practices make a big difference. Stay on marked trails. Pack out trash. Respect wildlife. Avoid disturbing natural features.

A trend emerging out of Sweden lets hikers prioritize both personal health and environmental cleanliness. "Plogging" combines jogging or walking with picking up litter. Combining "jogging" and plocka upp (Swedish for "pick up"), plogging offers an environmentally responsible workout. Participants typically carry bags and wear gloves to collect trash while exercising.

Campers should use designated sites and follow fire guidelines. Even small actions, such as properly extinguishing a campfire, can prevent significant damage.

Local park systems are investing in improvements to handle

increased visitation, from upgraded facilities to expanded staffing. But infrastructure alone isn't enough.

Visitors play a direct role in preserving these spaces.

Responsible recreation also supports tourism sustainability. Destinations that maintain their natural appeal are more likely to attract repeat visitors and long-term economic benefits.

For newcomers, the learning curve is real, but manageable. Many organizations offer guidelines and educational resources to help people get started.

The goal isn't perfection. It's awareness.

The future of outdoor recreation depends not just on access, but on how we use it.

Small choices add up over time. Choosing reusable water bottles, minimizing single-use packaging and cleaning gear between trips can all reduce environmental impact. Even sharing knowledge with friends or family helps reinforce responsible habits. When more people adopt these practices, the cumulative effect can be significant. Protecting outdoor spaces isn't limited to large initiatives — it's built on everyday decisions that, collectively, help ensure these places remain accessible, healthy and enjoyable for future visitors.

Vermont Granite Museum

A vibrant gathering place honoring Vermont granite industry's past and showcasing the present






7 Jones Brothers Way, Barre, Vermont 05641

Hours: May–October, Tues–Sat, 10am–4pm

Contact Us: info@vtgranitemuseum.org | 802-476-4605

Exhibits ~ Demonstrations ~ Hands-On Activities
Indoor Bouldering Wall ~ Outdoor Games
Pedal Cars ~ Sculpture Park ~ Riverside Nature Path

www.vtgranitemuseum.org | [@vermontgranitemuseum](https://www.instagram.com/vermontgranitemuseum)  
 Accessible & Leashed Pet Friendly



Calendar of Events Continued

Movie Series: "Jurassic Park" — 5:30-7:30 p.m. Kellogg-Hubbard Library, 135 Main St., Montpelier.

JULY 14

Fairlee Community Arts Summer Concert Series: "Bob & Sarah Amos Band" — featuring a different musical performing group each week. Tuesdays through August on the town common. Rain site: Fairlee Town Hall. 6:30-8 p.m. Town Common Road, Fairlee.

JULY 15

Skout at The Middlesex Bandstand — Indie-Folk/Pop Rock/Anthemic. 6:30-8:30 p.m. Middlesex Bandstand, 465 Shady Rill Road, Middlesex.

JULY 16

Open Mic at the Forge — 6-9 p.m. Forge, 10 Prince St, Randolph.

JULY 17

Old Time on the Onion — July 17-19. An all-acoustic, very informal, mostly non-performance gathering, all jams, all day, and all night for the exceptionally

vigorous. Noon-3 p.m. Pransky Road, Cabot. 802-222-0961.

Count Basie Orchestra at Trapp Family Lodge Concert Meadow — led by Scotty Barnhart, their dynamic blend of swing, blues, and improvisation has captivated audiences in film, television, and on prestigious stages worldwide. Spruce Peak Arts, 122 Hourglass Drive Stowe, 802-760-4634, boxoffice@sprucepeakarts.org.

Plainfield Community Night: Farmers Market, Community Meal and Live Music — Weekly gathering in the heart of the village for all ages 4-7 p.m. Grace United Methodist Church, 13 Mill St., Plainfield.

JULY 18

Randolph Farmers Market — Local farmers, growers, bakers, artists and craftsmen. Saturdays through Oct. 24. 9 a.m.-1 p.m. Gifford Medical Center green.

Old Time on the Onion — July 17-19. An all-acoustic, very informal, mostly non-performance gathering, all jams, all day, and all night for the exceptionally vigorous. Noon-3 p.m. Pransky Road, Cabot. 802-222-0961.

Waltzing and Contra Dance — Waltzing 7-7:45 p.m., contra dance intro session at 7:45, and contra dancing, 8-11 p.m. Hannah Chamberlain calling and music by Atlantic Crossing. 7-11 p.m. Capital City Grange, 6612 Vermont 12, Berlin. 802-225-8921.

Marshfield Farmers Market — with music and workshop 10 a.m.-1 p.m. Jaquith Public Library, 122 School St., Marshfield. 802-426-3581.

JULY 19

Old Time on the Onion — July 17-19. An all-acoustic, very informal, mostly non-performance gathering, all jams, all day, and all night for the exceptionally vigorous. Noon-3 p.m. Pransky Road, Cabot. 802-222-0961.

Wildlife Tracking Club Outing — Explore with NBNC naturalists and fellow nature lovers in search of wildlife tracks and sign. 10-11:30 a.m. Hosted by North Branch Nature Center, 713 Elm St., Montpelier. 802-229-6206.

Hannah Cohen — Earthstar Mountain is an ode to curiosity. It asks what it means to live a life: how do we decide which direction to take? How do we stay there? And what happens when

the rug is pulled from under our feet? 7:30 p.m. The Creative Campus at Goddard, Haybarn Theatre, 123 Pitkin Road, Plainfield. 802-793-2092.

JULY 20

Beginner-Level Line Dancing — Join Sid McLam for a beginner-level line dancing class. \$10 donation. 6:30-8 p.m. Brookfield Old Town Hall, 93 Stone Road, Brookfield. 802-363-2598.

Broadway in Vermont — A Magical Evening of Broadway Stars 6 p.m. Moose Meadow Lodge & Treehouse, 607 Crossett Hill Road, Duxbury. 802-244-5378.

Movie Series: "Jurassic Park: The Lost World" — 5:30-7:30 p.m. Kellogg-Hubbard Library, 135 Main St., Montpelier.

JULY 21

Fairlee Community Arts Summer Concert Series: "The Rozatones" — featuring a different musical performing group each week. Tuesdays through August on the town common. Rain site: Fairlee Town Hall. 6:30-8 p.m. Town Common Road, Fairlee.

VOTED #2 MAZE IN AMERICA

located just North of Franconia Notch



www.vermontcornmaze.com



North Danville, VT

LARGEST MAZE IN NEW ENGLAND

Big Maze = 2-3 hours

Scenic Maze = 45 min

Indoor Blacklight Maze

100' of bridges

Underground Tunnel

PRETENDIN Play Area

BARNYARD GOLF

See website for updated hours & info

Advanced Online Reservations Required





Get started with rock climbing

Rock climbing might look intimidating, but getting started is more accessible than most people think.

Across the country, climbing has grown rapidly, fueled by indoor gyms and outdoor destinations that welcome beginners. While iconic locations draw experienced climbers, many regional areas offer approachable routes for newcomers.

These accessible environments allow beginners to learn fundamentals without extreme exposure.

The first step is education. Most new climbers begin at indoor gyms, where they can learn techniques, safety protocols and equipment use in a controlled setting. From there, guided outdoor experiences help bridge the gap.

Gear can be a barrier — but doesn't have to be. Many outfitters and climbing gyms offer rentals, making it possible to try the sport before investing.

Safety is non-negotiable. Proper instruction, reliable equipment and understanding basic systems, such as belaying, are essential. Beginners should always climb

with experienced partners or certified guides.

Climbing is as much mental as physical. It requires problem-solving, focus and trust.

From lodging to dining, climbing benefits surrounding communities. Destinations attract visitors who often stay longer and spend more locally.

For those hesitant to try, start small. Indoor gyms, beginner classes and guided outings provide a low-risk entry point.

Progress in climbing comes quickly with consistency. Even a few sessions can improve strength, technique and confidence on the wall. Many gyms offer routes of varying difficulty, allowing beginners to advance at their own pace without pressure. As skills develop, climbers often find a strong sense of community, with experienced participants offering tips and encouragement. That supportive environment helps newcomers stay motivated and makes climbing not just a sport, but a social and personal challenge.

Calendar of Events Continued

JULY 22

Sonido Mal Maíz at The Middlesex Bandstand — Psychedelic Latin/Indie Folk Fusion/World Groove. 6:30-8:30 p.m. Middlesex Bandstand, 465 Shady Rill Road, Middlesex.

JULY 24

Plainfield Community Night: Farmers Market, Community Meal and Live Music — Weekly gathering in the heart of the village for all ages 4-7 p.m. Grace United Methodist Church, 13 Mill St., Plainfield.

Groesome Playground Injuries & Romeo + Juliet — The passionate but forbidden love of two young “star-crossed lovers” from feuding families leads to their deaths, ultimately ending their families’ conflict. Presented by Monday Nights Theatre Company. 7:30 p.m. The Grange Hall Cultural Center, 317 Howard Ave, Waterbury. www.catamountarts.org.

JULY 25

Randolph Farmers Market — Local farmers, growers, bakers, artists and craftsmen. Saturdays through Oct. 24. 9 a.m.-1 p.m. Gifford Medical Center green.

Marshfield Farmers Market — with music and workshop 10 a.m.-1 p.m. Jaquith Public Library, 122 School St., Marshfield. 802-426-3581.

JULY 26

Romeo and Juliet — The passionate but forbidden love of two young “star-crossed lovers” from feuding families leads to their deaths, ultimately ending their families’ conflict. Presented by Monday Nights Theatre Company. 2 p.m. The Grange Hall Cultural Center, 317 Howard Ave, Waterbury. www.catamountarts.org.

JULY 27

Beginner-Level Line Dancing — Join Sid McLam for a beginner-level line dancing class. \$10 donation. 6:30-8 p.m. Brookfield Old Town Hall, 93 Stone Road, Brookfield. 802-363-2598.

Movie Series: “Jurassic Park III” — 5:30-7:30 p.m. Kellogg-Hubbard Library, 135 Main St., Montpelier.

JULY 28

Fairlee Community Arts Summer Concert Series: “Carlos Ocasio & Frydaddy” — featuring a different musical performing group each week. Tuesdays through August on the town common.

Rain site: Fairlee Town Hall. 6:30-8 p.m. Town Common Road, Fairlee.

The Cabot Arts and Music Festival — July 28 and 29, noon-10 p.m. on the Cabot Village Common. A multi-genre festival including 10 bands, kids activities, food trucks, crafts vendors, labyrinth walk, and community arts project. Artists include: Barika, Kat Wright, Bon Débarras, Modern Times Theater, Kate Campbell, Scottish Fish, Vance Gilbert, The Larkspurs, Point Noir Cajun Band, For the Love of Pete, and more. 3148 Common Rd. in Cabot, Vermont. Kids 16 and under admitted free of charge. Purchase admission at www.cabotarts.org.

CVT SURJ Community Gathering and Potluck — A free family-friendly community event for building connection and solidarity, and taking action against racism and classism. 6-8 p.m. Unitarian Church of Montpelier, 130 Main St., Montpelier.

JULY 29

Borrow the Bones at The Middlesex Bandstand — Roots Americana/Folk/R&B. 6:30-8:30 p.m. Middlesex Bandstand, 465 Shady Rill Road, Middlesex.

The Cabot Arts and Music Festival — July 28 & 29, noon-10 p.m. on the Cabot Village Common. A multi-genre festival including 10 bands, kids activities, food trucks, crafts vendors, labyrinth walk, and community arts project. 3148 Common Rd. in Cabot, Vermont. Kids 16 and under admitted free of charge. Purchase admission at www.cabotarts.org.

JULY 30

Green Mountain Playwright Retreat — July 30 – Aug. 4. Dedicated time to begin new work, revisit projects in progress, and rediscover the joy of writing theater. The focus is on inspiration over output, curiosity over completion, and community over isolation. The Creative Campus at Goddard, 123 Pitkin Road, Plainfield. 802-793-2092.

Deep Blue Sound — On an island in the Pacific Northwest, the community gathers to address the disappearance of the local orca pod. Friendships fray, tumors grow, new love blooms, wood is chopped, poems are written. The seasons change. Will the whales ever return? Deep Blue Sound is a meditation on our relationship to our neighbors, ourselves, and the natural world around us. 7:00 p.m. The Creative Campus at Goddard, Haybarn Theatre, 123 Pitkin Road, Plainfield. 802-793-2092.

Romeo and Juliet — The passionate but forbidden love of two young “star-crossed lovers” from feuding families leads to their deaths, ultimately ending their families’ conflict. Presented by Monday Nights Theatre Company. 7:30 p.m. The Grange Hall Cultural Center, 317 Howard Ave, Waterbury. www.catamountarts.org

JULY 31

Deep Blue Sound — On an island in the Pacific Northwest, the community gathers to address the disappearance of the local orca pod. Deep Blue Sound is a meditation on our relationship to our neighbors, ourselves, and the natural world around us. 7:00 p.m. The Creative Campus at Goddard, Haybarn Theatre, 123 Pitkin Road, Plainfield. 802-793-2092.

Plainfield Community Night: Farmers Market, Community Meal and Live Music — Weekly gathering in the heart of the village for all ages 4-7 p.m.

AUG. 1

Randolph Farmers Market — Local farmers, growers, bakers, artists and craftsmen. Saturdays through Oct. 24. 9 a.m.-1 p.m. Gifford Medical Center green.

Paint & Sip — 5:30-7:30 p.m. Kellogg-Hubbard Library, 135 Main St., Montpelier.

Contra Dance — Newcomers 7-7:45 and Contra Dance 8-11. No partner needed. All levels and ages of dancers welcome. Please bring clean soft soled shoes. More info at www.montpeliercontradance.org. 7-11 p.m. Capital City Grange, 6612 Vermont 12, Berlin. 802-225-8921.

Deep Blue Sound — On an island in the Pacific Northwest, the community gathers to address the disappearance of the local orca pod. Deep Blue Sound is a meditation on our relationship to our neighbors, ourselves, and the natural world around us. 7:00 p.m. The Creative Campus at Goddard, Haybarn Theatre, 123 Pitkin Road, Plainfield. 802-793-2092.

Marshfield Farmers Market — with music and workshop 10 a.m.-1 p.m. Jaquith Public Library, 122 School St., Marshfield. 802-426-3581.

Romeo and Juliet — The passionate but forbidden love of two young “star-crossed lovers” from feuding families leads to their deaths, ultimately ending their families’ conflict. Presented by Monday Nights Theatre Company. 2 p.m. The Grange Hall Cultural Center, 317 Howard Ave, Waterbury. www.catamountarts.org.

AUG. 2

Deep Blue Sound — On an island in the Pacific Northwest, the community gathers to address the disappearance of the local orca pod. Deep Blue Sound is a meditation on our relationship to our neighbors, ourselves, and the natural world around us. 7:00 p.m. The Creative Campus at Goddard, Haybarn Theatre, 123 Pitkin Road, Plainfield. 802-793-2092.

Romeo and Juliet — The passionate but forbidden love of two young “star-crossed lovers” from feuding families leads to their deaths, ultimately ending their families’ conflict. Presented by Monday Nights Theatre Company. 2 p.m. The Grange Hall Cultural Center, 317 Howard Ave, Waterbury. www.catamountarts.org.

AUG. 4

Fairlee Community Arts Summer Concert Series: “Blue Jay Way” — Featuring a different musical performing group each week. Tuesdays through August on the town common. Rain site: Fairlee Town Hall. 6:30-8 p.m. Town Common Road, Fairlee.

AUG. 5

The Suitcase Junket at The Middlesex Bandstand — Bluesy Americana/Folk Rock/Garage Blues. 6:30-8:30 p.m. Middlesex Bandstand, 465 Shady Rill Road, Middlesex.

AUG. 6

Open Mic at the Forge — 6-9 p.m. Forge, 10 Prince St, Randolph.

AUG. 7

Deep Blue Sound — On an island in the Pacific Northwest, the community gathers to address the disappearance of the local orca pod. Deep Blue Sound is a meditation on our relationship to our neighbors, ourselves, and the natural world around us. 7:00 p.m. The Creative Campus at Goddard, Haybarn Theatre, 123 Pitkin Road, Plainfield. 802-793-2092.

Montpelier Art Walk — A self-guided arts tour in downtown Montpelier, featuring artist receptions, art workshops, live music, and a laid-back social vibe. 4-8 p.m. Montpelier.

Plainfield Community Night: Farmers Market, Community Meal and Live Music — Weekly gathering in the heart of the village for all ages 4-7 p.m. Grace United Methodist Church, 13 Mill St., Plainfield.



Why local outfitters matter

On a warm June morning, the difference between a frustrating outdoor trip and a memorable one often comes down to a simple choice: where you buy your gear.

Locally owned outdoor outfitters are quietly powering the summer recreation economy. These shops do more than sell equipment; they offer expertise, community connections and a gateway into regional tourism.

Unlike big-box retailers, local outfitters tailor their inventory to the specific terrain and conditions of the region. Whether it's advising on river-safe kayaks or recommending breathable hiking layers for humid summers, staff at local outfitters are often experienced outdoorspeople who know the landscape firsthand.

That insight matters. Outdoor recreation continues to surge nationwide, with Recreation.gov reporting growing demand for camping, hiking and gear rentals across thousands of public sites. But many newcomers lack the experience to confidently get started. That's where local shops shine.

You don't need to buy everything. Often you just need a few key supplies.

Local outfitters also act as informal tourism hubs. Ask about a trail and you might leave with a hand-drawn map. Ask about kayaking and you might hear about a quiet stretch of river tour-

ists rarely find. This hyper-local knowledge encourages visitors to explore beyond seasonally crowded destinations.

Economically, the impact adds up. Money spent at locally owned businesses tends to circulate within the region, supporting jobs and services in the community.

For beginners, the advice is simple: start small and build relationships. Rent gear before buying. Ask questions. Let local experts guide your first outings.

In the outdoors, the best gear isn't always what you buy. It's what you learn.

Many outfitters also host workshops, guided trips and beginner-friendly classes that lower the barrier to entry for outdoor recreation. These experiences not only build skills but also foster confidence and a sense of belonging in unfamiliar environments. In an era where online shopping is common, these in-person connections are increasingly valuable. They remind us that outdoor recreation is not just about gear, but about people, places and shared knowledge passed from one adventurer to the next.

Calendar of Events Continued

AUG. 8

Randolph Farmers Market — Local farmers, growers, bakers, artists and craftsmen. Saturdays through Oct. 24. 9 a.m.-1 p.m. Gifford Medical Center green.

Central Vermont Chamber Music Festival Week 1 — Brahms, Gliere, Żeleński. 7:30-9:30 p.m. Chandler Music Hall at Chandler Center for the Arts, 71 North Main St., Randolph. 802-728-9878. tickets.chandler-arts.org.

Marshfield Farmers Market — with music and workshop 10 a.m.-1 p.m. Jaquith Public Library, 122 School St., Marshfield. 802-426-3581.

AUG. 10

Shidaa Projects Cultural Summer Camp — Aug. 10-13. A four-day summer camp featuring West African Arts, Drumming and Dance, 8:30 a.m.-3:30 p.m. First Congregational Church, 1808 Scott Hill Road, Berlin. 617-780-2458.

AUG. 11

Fairlee Community Arts Summer Concert Series: "Marsh Lights" — Featuring a different musical performing group each week. Tuesdays through August on the town common. Rain site: Fairlee Town Hall. 6:30-8 p.m. Town Common Road, Fairlee.

Marsh Lights — An "immersion into American roots where there is little equal to the quintet in the Northeast," 6:30-8 p.m. Fairlee Town Common, Town Common Road, Fairlee. 802-331-0790.

AUG. 14

Central Vermont Chamber Music Festival presents Erik Friedlander: Block Ice & Propane — Blending American roots with a vivid portrait of travel and memory. 7-9 p.m. Chandler Music Hall, 71 North Main St., Randolph. 802-728-9878.

Randolph Farmers Market — Local farmers, growers, bakers, artists and craftsmen. Saturdays through Oct. 24. 9 a.m.-1 p.m. Gifford Medical Center green.

Contra Dance — Newcomers 7-7:45 and Contra Dance 8-11. No partner needed. All levels and ages of dancers welcome. Please bring clean soft soled shoes. More info at www.montpeliercontradance.org. 7-11 p.m. Capital City Grange, 6612 Vermont 12, Berlin. 802-225-8921.

Plainfield Community Night: Farmers Market, Community Meal and Live Music — Weekly gathering in the heart of the village for all ages 4-7 p.m. Grace

United Methodist Church, 13 Mill St., Plainfield.

AUG. 15

Marshfield Farmers Market — with music and workshop 10 a.m.-1 p.m. Jaquith Public Library, 122 School St., Marshfield. 802-426-3581.

Central Vermont Chamber Music Festival Week 2 — Festival honors Walter Parker with chamber works by Spohr, Kahn, Shostakovich, and Dohnanyi. 7:30-9:30 p.m. Chandler Music Hall, 71 North Main St., Randolph. 802-728-9878.

AUG. 18

Fairlee Community Arts Summer Concert Series: "Wyld Nightz Band" — Featuring a different musical performing group each week. Tuesdays through August on the town common. Rain site: Fairlee Town Hall. 6:30-8 p.m. Town Common Road, Fairlee.

Wyld Nightz Band — 6:30-8 p.m. Fairlee Town Common, Town Common Road, Fairlee. 802-331-0790.

AUG. 20

Open Mic at the Forge — 6-9 p.m. Forge, 10 Prince St, Randolph.

AUG. 21

Plainfield Community Night: Farmers Market, Community Meal and Live Music — Weekly gathering in the heart of the village for all ages 4-7 p.m. Grace United Methodist Church, 13 Mill St., Plainfield.

AUG. 22

Randolph Farmers Market — Local farmers, growers, bakers, artists and craftsmen. Saturdays through Oct. 24. 9 a.m.-1 p.m. Gifford Medical Center green.

Marshfield Farmers Market — with music and workshop 10 a.m.-1 p.m. Jaquith Public Library, 122 School St., Marshfield. 802-426-3581.

AUG. 23

Dan Tyminski Band at Trapp Family Lodge Concert Meadow — One of the biggest names in modern-day bluegrass. Spruce Peak Arts, 122 Hourglass Drive Stowe, 802-760-4634, boxoffice@sprucepeakarts.org.

AUG. 25

Fairlee Community Arts Summer Concert Series: "Blues Without Borders" — Featuring a different musical

performing group each week. Tuesdays through August on the town common. Rain site: Fairlee Town Hall. 6:30-8 p.m. Town Common Road, Fairlee.

CVT SURJ Community Gathering and Potluck — A free family-friendly community event for building connection and solidarity and taking action against racism and classism. Share food and announcements of community organizing opportunities. 6-8 p.m. Unitarian Church of Montpelier, 130 Main St., Montpelier.

AUG. 28

Pokey LaFarge: Solo Tour — Join me for an intimate solo performance. I'll be playing songs from all my albums as well as new interpretations of Gospel, Rock & Roll, and Country classics. 8:00 p.m. The Creative Campus at Goddard, Haybarn Theatre, 123 Pitkin Road, Plainfield. 802-793-2092.

Plainfield Community Night: Farmers Market, Community Meal and Live Music — Weekly gathering in the heart of the village for all ages 4-7 p.m. Grace United Methodist Church, 13 Mill St., Plainfield.

AUG. 29

Randolph Farmers Market — Local farmers, growers, bakers, artists and craftsmen. Saturdays through Oct. 24. 9 a.m.-1 p.m. Gifford Medical Center green.

Social Band concert at the Old Round Church — 7:30 p.m. The Old Round Church, 25 Round Church Road, Richmond. 802-434-3654.

Marshfield Farmers Market — with music and workshop 10 a.m.-1 p.m. Jaquith Public Library, 122 School St., Marshfield. 802-426-3581.

SEPT. 5

Randolph Farmers Market — Local farmers, growers, bakers, artists and craftsmen. Saturdays through Oct. 24. 9 a.m.-1 p.m. Gifford Medical Center green.

Contra Dance — Newcomers 7-7:45 and Contra Dance 8-11. No partner needed. All levels and ages of dancers welcome. Please bring clean soft soled shoes. More info at www.montpeliercontradance.org. 7-11 p.m. Capital City Grange, 6612 Vermont 12, Berlin. 802-225-8921.

Marshfield Farmers Market — with music and workshop 10 a.m.-1 p.m. Jaquith Public Library, 122 School St., Marshfield. 802-426-3581.

SEPT. 6

New World Festival — Celtic and Quebecois music and dance festival. Music, dance, puppets, food and fun. For kids 12 and younger admission is free. Tickets available at chandler-arts.org. Chandler Music Hall at Chandler Center for the Arts, 71 North Main St., Randolph. 802-728-9878.

SEPT. 12

Randolph Farmers Market — Local farmers, growers, bakers, artists and craftsmen. Saturdays through Oct. 24. 9 a.m.-1 p.m. Gifford Medical Center green.

Marshfield Farmers Market — with music and workshop 10 a.m.-1 p.m. Jaquith Public Library, 122 School St., Marshfield. 802-426-3581.

SEPT. 19

Randolph Farmers Market — Local farmers, growers, bakers, artists and craftsmen. Saturdays through Oct. 24. 9 a.m.-1 p.m. Gifford Medical Center green.

Marshfield Farmers Market — with music and workshop 10 a.m.-1 p.m. Jaquith Public Library, 122 School St., Marshfield. 802-426-3581.

SEPT. 21

Potluck supper and program — at **AMERICA** 6 p.m. featuring J. Kevin Graffagnino at 7 p.m. speaking about his book on Ira Allen. Old Brick Church in East Montpelier Village.



SEPT. 22

CVT SURJ Community Gathering and Potluck — A free family-friendly community event for building connection and solidarity and taking action against racism and classism. Share food and announcements of community organizing opportunities. 6-8 p.m. Unitarian Church of Montpelier, 130 Main St., Montpelier.

SEPT. 26

Randolph Farmers Market — Local farmers, growers, bakers, artists and craftsmen. Saturdays through Oct. 24. 9 a.m.-1 p.m. Gifford Medical Center green.

The Cabot Cheese and Culture Festival — celebrates Vermont cheesemakers and producers of fermented foods and beverages. Noon-5 p.m. The Cabot Village Common, 3148 Main St., Cabot. 802-793-3016.

Celebrate the food, wine, and culture of the immigrant groups that have shaped our community while creating a unique and elevated festival experience to launch the Heritage Festival weekend.



For more information and to purchase tickets go to:
<https://barresocialclub.com/ticketed-events/>



2026
CONCERTS in
Carrier Park
 CONCERTS START AT 5:30
 3:30 - BARRE FARMER'S MARKET 4:00 - FOOD TRUCKS

Presented by:
 802 Cars.com
 Community National Bank
 BARRE BP PARTNERSHIP

JUNE

- June 3 - Ali T**
Sponsored by: Salvador & Babic
- June 10 - SHS Band - The Tones**
Sponsored by: Wheeler Environmental Svcs
- June 17 - Atlantic Crossing**
Sponsored by: Peoples Health & Wellness
- June 24 - Randy Beer**
Sponsored by: Tatros Appliance

AUGUST

- Aug 5 - Jacob Green**
Sponsored by: Ladder One
- Aug 12 - Scott Forrest**
Sponsored by: Richard J Wobby Jewelers
- Aug 19 - Amerikana Blue**
Sponsored by: KW Vermont - Montpelier
- Aug 26 - Elizabeth Begins**
Sponsored by: Valsangiacomo & Pelkey Law

JULY

- July 1 - The Returnables**
Sponsored by: Slowpoke Exchange
- July 8 - Breanna & the Boys**
Sponsored by: 802 Credit Union
- July 15 - The Rustics**
Sponsored by: Stone & Browning Property
- July 22 - Train Wreck**
Sponsored by: Nelson Ace Hardware
- July 29 - Michael Stridsberg**
Sponsored by: Karen O'Hara, LCPC

SEPTEMBER

- Sept 2 - Double Shot**
Sponsored by: Lenny's Shoe & Apparel
- Sept 9 - Earthbound Spirits Trio**
Sponsored by: Tasty Bites
- Sept 16 - Native Tongue**
Sponsored by: Salvador & Babic
- Sept 23 - Seth + Sophie**
Sponsored by: Emslie the Florist
- Sept 30 - The Messengers**
Sponsored by: Tatros Appliance

Barre

HERITAGE

-FESTIVAL-

And Homecoming Days

JULY 22ND - 25TH 2026

LEARN MORE AT:
WWW.THEBARREPARTNERSHIP.COM/HERITAGE-FESTIVAL

music
food
arts
history

Artist: Dierdra Tara Michelle



Vermont's premier shopping experience Family owned and operated. The pride of Vermont. Explore 18 acres and several floors and buildings



We can fit your feet and your lifestyle. Voted the best place to buy shoes, clothing and outdoor supplies 2023 Over 20,000 pairs of boots and shoes in stock. Tax free footwear and clothing and more



For people who like to shop and even those who don't. Footwear, clothing, hunting, camping, kayaks, furniture, jewelry, cookware, equestrian supplies, pet supplies and more!



286 Waits River Road Bradford, VT 1 mile off I-91 exit 16 straight through the only light in the county Monday-Saturday 8:30-5:30 Friday till 8 PM closed Sunday 800-222-9316 vermontgear.com Always a good sale. Plenty of free customer parking and room to walk your dog. Closed New Years, Memorial Day, 4th of July, Labor Day, Thanksgiving and Christmas Day