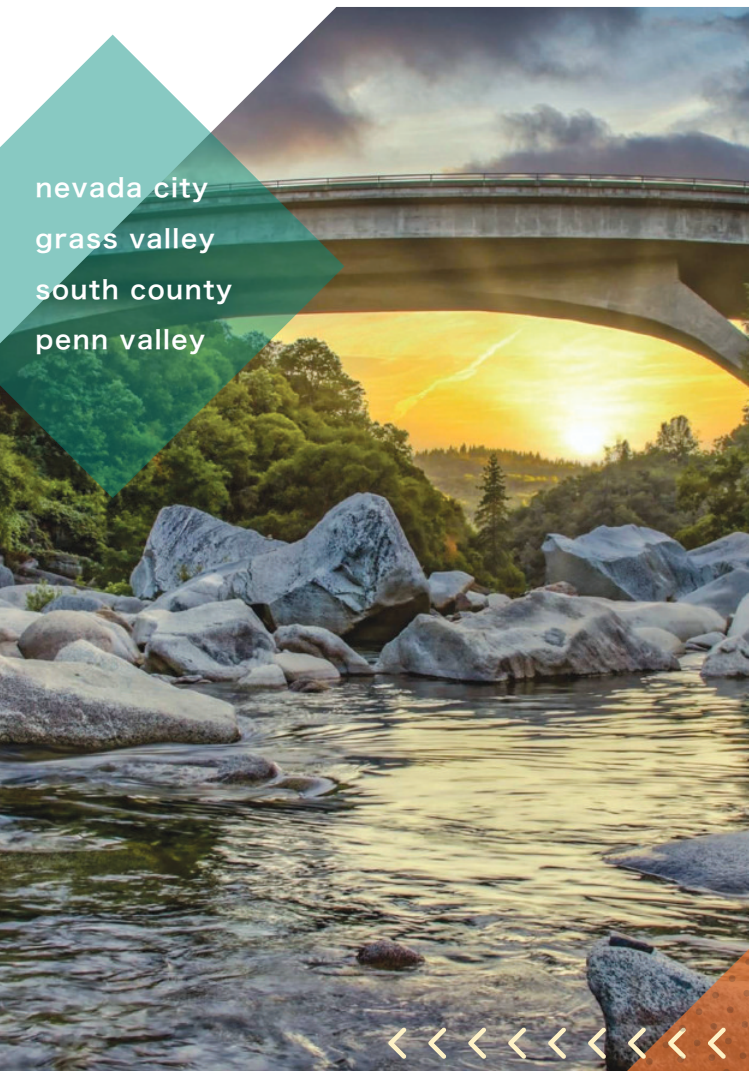


NEVADA COUNTY

2022 - 2023 VISITORS' GUIDE

nevada city
grass valley
south county
penn valley



21 wine tasting locations
5 craft breweries
100s of restaurants
10 historic museums

Antique Shops, Performing
Arts & Theaters, Camping,
Hiking, Cycling and
much more...

HELP US BUILD A

Thriving Community

INSPIRED BY

Transformative Music

Music in the Mountains presents
inspiring concerts and education programs
for everyone—because MUSIC
brings hope and joy to our world.

2022 CONCERTS & EVENTS



For upcoming concerts, events
and ticket information:

Scan it!



MIM

music in the mountains

musicinthemountains.org
530-265-6124

welcome to

NEVADA COUNTY

HELP US BUILD A Thriving Community

Forged by the 1849 gold rush, this area has maintained its sense of rugged independence and natural beauty as it has evolved into a world-class destination for art enthusiasts, outdoor recreationalists, foodies, and anyone just wanting to “get away from it all” for a few days. A unique combination of historical landmarks and modern sensibilities, Nevada County is ideally located a mere hour from Sacramento, California’s State Capitol, and two hours from the Bay Area. Nevada County is an easy weekend getaway for a breath of fresh air and a chance to unwind.

In addition, this area is a great place to stop by on your way to Reno or Lake Tahoe, a mere 90 minutes from Grass Valley/ Nevada City, for a bite to eat or some shopping at our local boutiques and galleries on your way to hit the slopes or visit the casino. Being close to two major metropolitan areas, Nevada County is also a popular destination for famous musicians who pop by for a quick performance merely because they love the area. If you prefer the solitude of nature, there are endless camping, hiking, boating, and biking opportunities that abound here, as well as lodging accommodations to fit any taste, from modern hotels to creek side suites. Anywhere you go, you will find a friendly face and helpful suggestion, and the food will be delicious! Nevada County has it all, just waiting for you to discover your own new favorite thing.



demographics

102,241

POPULATION

50.5

MEDIAN AGE

68,333

MEDIAN INCOME

THE UNION
www.TheUnion.com
Great People Connecting Communities

© 2022 The Union. Published under contract by The Union, 464 Sutton Way,
Grass Valley, CA 95945 • 530-273-9561 • TheUnion.com

NEVADA COUNTY

CALIFORNIA

Nevada County is located in the picturesque Sierra Nevada foothills, approximately 60 miles northeast of Sacramento. To get there, from Sacramento, take I-80 east to Auburn and turn north on scenic Highway 49. At an elevation of 2,500 feet and only three miles apart, both towns offer a relaxing, year-round destination. Nevada County's perfect location provides moderate temperatures and exceptional beauty.



DISTANCES

(Measured from Grass Valley)

Auburn/Interstate 80	25 miles
Marysville/Yuba City	34 miles
Truckee	50 miles
Reno	91 miles
Sacramento	60 miles
San Francisco	157 miles
Los Angeles	448 miles

AVERAGE ELEVATION

Western Nevada County: 2,500 ft.
Eastern Nevada County: 6,000 ft.

WEATHER

Annual Rainfall: 54 inches
Rainy season: November - April

THE 2022-2023 VISITORS' GUIDE IS PRODUCED BY ALL THE LOCAL CHAMBERS AS A COLLECTIVE PUBLICATION. CURRENT LISTINGS OF NEVADA COUNTY EVENTS ARE PUBLISHED EVERY THURSDAY IN THE PROSPECTOR SECTION OF THE UNION OR VISIT THEUNION.COM.

GREATER GRASS VALLEY CHAMBER OF COMMERCE

128 E. Main St., Grass Valley, CA 95945
530-273-4667
grassvalleychamber.com

NEVADA CITY CHAMBER OF COMMERCE

132 Main St., Nevada City, CA 95959
530-265-2692
nevadacitychamber.com

PENN VALLEY AREA CHAMBER OF COMMERCE

17422 Penn Valley Dr.,
Penn Valley, CA 95946
(In Penn Valley Shopping Center)
530-432-1802 • pennvalleycoc.org

SOUTH NEVADA COUNTY CHAMBER OF COMMERCE

10063 Combie Rd., Ste. 2,
Auburn, CA 95602
530-268-7622 • sncchamber.org

ROUGH & READY CHAMBER OF COMMERCE

Post Office Box 801,
Rough & Ready, CA 95975
530-272-9145
Roughandreadychamber.com

TRUCKEE DONNER CHAMBER OF COMMERCE

10065 Donner Pass Rd.,
Truckee, CA 96161
530-587-2757 • 866-443-2027
Truckee.com

INSIDE

- 3 Welcome to Nevada County
- 4 Nevada County Facts and Map
- 6 Lodging Guide
- 10 Restaurant Guide
- 20 Vineyards & Wineries
- 22 Winery Locator Map
- 25 Breweries & Tap Houses
- 26 Night Life
- 28 Panning Gold
- 28 Kayaking & Rafting
- 29 Cycling
- 30 Outdoors: Golf Courses, Disc Golf and Tennis
- 31 Neighborhood Parks & State Historic Parks
- 32 Lakes & Reservoirs
- 33 Hiking Trails
- 37 Walking Tours
- 38 Driving Tours
- 39 The Four Seasons
- 40 Penn Valley Map
- 41 South County Map
- 42 Nevada City Map
- 44 Grass Valley Map
- 46 Signature Annual Events
- 48 Movie Theatres
- 48 Family Fun
- 48 Art Galleries
- 49 Performing Arts & Theatres
- 50 Dog Friendly
- 53 Museums
- 54 Booktown, USA
- 55 Wellness
- 56 Antique Shops
- 56 Airports
- 57 Getting Married in Nevada County



CONGRATULATIONS TO JASON SCALLIN OF 11 ELEVEN PHOTOGRAPHY!

He was the winner of this year's
cover photo contest with
his photo titled

Sunset Over the Yuba



Kodo Arts
Japanese Antiques

Kodo Arts Japanese Antiques Warehouse Sale
Furniture • Garden • Home Decor • Kimonos • Art

Open to the public twice a year!

October 15-23, 2022 & May 6-14, 2023

571 Searls Ave. • Nevada City, CA

530-478-0812 • www.kodo-arts.com

■ LODGING

HOTELS/MOTELS

ALTA SIERRA VILLAGE INN

11858 Tammy Way, Grass Valley
530-446-3241 / 530-360-9144
alta-sierra-village-inn.business.site

BEST WESTERN GOLD COUNTRY INN

972 Sutton Way, Grass Valley
530-273-1393
bestwestern.com/
goldcountryinngrassvalley
Pool & hot tub

BROAD STREET INN

517 Broad St., Nevada City
530-265-2239
broadstreetinn.com
Located downtown, this Victorian inn offers six rooms in a peaceful garden setting

GOLDEN CHAIN MOTEL

13413 Highway 49, Grass Valley
530-273-7279
goldenchainmotelgrassvalley.us
Pool

GRASS VALLEY COURTYARD SUITES

210 N. Auburn St., Grass Valley
530-272-7696
gvcourtyardsuites.com
Near downtown. Offering complementary breakfast, pool, hot tub & sauna

THE HOLBROOKE HOTEL

212 W. Main St., Grass Valley
530-460-4078
holbrooke.com
Newly renovated historic hotel in downtown with an onsite bar, restaurant, and event space

GOLD MINERS INN

121 Bank St., Grass Valley
530-477-1700
goldminersinngrassvalley.com
Centrally located with modern guest rooms. Meeting space and weddings.

THE NATIONAL EXCHANGE HOTEL

211 Broad St., Nevada City
530-362-7605
thenationalexchangehotel.com
Newly renovated historic hotel in downtown with an onsite bar, restaurant, and event space

NEVADA CITY INN

760 Zion St., Nevada City
530-265-2253
nevadacityinn.net
20 rooms plus 7 cottages

NORTHERN QUEEN INN

400 Railroad Ave., Nevada City
530-265-5824 / 800-226-3090
northernqueen.com
Pool & Hot tub. Plus cottages

PIETY HILL COTTAGES

523 Sacramento St., Nevada City
530-265-2245 / 800-443-2245
pietyhillcottages.com
Park-like grounds & spacious rooms, just minutes from downtown

OUTSIDE INN

575 E. Broad St., Nevada City
530-265-2233
outsideinn.com
a small hotel in a quiet residential neighborhood just two blocks from downtown

BED & BREAKFASTS

HARMONY RIDGE LODGE

18883 East Hwy. 20, Nevada City
530-478-0615
harmonyridgelodge.com
B&B nestled in the woods of the Tahoe National Forest. Weddings & retreats.

THE MADISON HOUSE

427 Broad St., Nevada City
530-470-6127
themadisonhouse.net
Victorian B&B sitting the the heart of downtown

VACATION HOMES & RETREATS

TWO ROOM INN

431 Broad St., Nevada City
415-891-9022
tworoominn.com
Charming, unique Victorian home in the heart of town. Accommodates 2-6 in comfort and luxury. Your own private cottage.

EXPANDING LIGHT RETREAT

13930 Expanding Light Dr., Nevada City
530-478-7518 ext. 1
expandinglight.org
Yoga and meditation with accommodations and meals at Ananda

CRYSTAL HERMITAGE

14618 Tyler Foote Rd., Nevada City
530-478-7587
crystalhermitage.org
Guest house at Ananda

CREEKTOWN COTTAGES

126 Bank St., Grass Valley
530-308-2370
creektowncottages.com
Six unique cottages in the heart of Historic Downtown Grass Valley.

ROLLINS LAKESIDE

INN RESORT

18145 Rollins View, Grass Valley
530-273-0729
9 fully furnished cabins with kitchens, seasonal swimming pool, right on Rollins Lake

SIVANANDA ASHRAM

YOGA FARM

14651 Ballantree Ln., Grass Valley
530-272-9322
sivanandayogafarm.org
Yoga and meditation retreats

GOLDTOWN HIDEAWAY

534 Spring St., Nevada City
415-902-2447
goldtownhideaway.com
Pool & hot tub

A VICTORIAN ROSE

120 Winchester St., Grass Valley
925-639-0769
vrbo.com\87244 airbnb.com/
rooms/6658
Downtown Grass Valley Historic District, 4bd, 2 ba, hot tub, sleeps up to 12

BIG OWL RANCH

Nevada City
415-515-4546
Sleeps 10, 5 bd, 3 ba. Five minutes from Nevada City, rural beauty.

BROAD STREET STUDIO

Downtown Nevada City
Nevada City
airbnb.com/rooms/1613683
Nestled in the heart of Nevada City, this basement studio is perfect. Newly remodeled with a kitchen and private patio w/off street parking.

CREEKSIDO COTTAGE

520 Jordan St., Nevada City
650-773-1183
creekside@swannbrown.com
airbnb.com/rooms/16479341
Cozy cabin with screened porch

NEVADA CITY RETREATS

Nevada City
530.277.1510 or 530-470-0816
nevadacityretreats.com
Vacation cabins with hot tubs. Fully equipped on five acres.

THE DOWNTOWN BUNGALOW

128 Orchard St., Nevada City
530-470-3244
airbnb.com/rooms/4016734
private cottage, just minutes from downtown

STEVENSON VACATION RENTALS

Alta Sierra Grass Valley
530-613-7350
vrbo.com/140245, vrbo.com/140231
3 bd, 2ba, sleeps 2-10, swimming hole and spa

VILLA 309

309 Commercial St., Nevada City
airbnb.com/rooms/18407133

CAMPING

INN TOWN CAMPGROUND

9 Kidder Ct., Nevada City
530-265-9900
inntowncampground.com
A family-friendly campground located just minutes from downtown Nevada City, offering pitch-your-own tent sites, RV hook ups, and fully furnished glamping tents. 30 tent sites, 16 RV sites, 15 glamping tents, plus bathrooms, indoor and outdoor showers, communal building with a camp store, kitchen, living room, dining area, patio, and laundry. Swimming pool and special activities.

CHUTE HILL CAMPGROUND AT MALAKOFF DIGGINS STATE PARK

23579 North Bloomfield Rd., Nevada City
530-265-2740
30 sites for tents of RVs plus 2 rustic cabins. Picnic table and fire pitch in each site. Piped water, flush toilets, and wood for sale.

NEVADA COUNTY FAIRGROUNDS

11228 McCourtney Rd., Grass Valley
530-273-6217
nevadacountyfair.com/camping
RVs only. 44 sites with full hookups, plus 100 sites with water and power. Showers and one convient dump station. Facilities are available for either individual or groups. Facilities may be unavailable due to scheudled fairground acitivities. Wifi available.

**SCOTTS FLAT LAKE
CAMPGROUND**

23333 Scotts Flat Rd., Nevada City
530-265-5302
scottsflatlake.net

Camping, picnicking, swimming,
fishing, boating, skiing, boat rentals,
bait & tackle, gas dock, dry storage,
mooring, camp store, hot showers,
playground.

ROLLINS LAKE CAMPING

Fantastic fishing and water sports.
26 miles of wooded shoreline featuring
4 unique campgrounds, 4 launch
ramps, gas docks, general stores,
2 restaurants, and a total of over
250 campsites.

GREENHORN CAMPGROUND

1500 Grenhorn Access Rd.,
Grass Valley
530-388-0328

Just 10 minutes off of I-80, features
84 sites and the largest swimming
beach on Rollins Lake. Complete with
a general store, arcade, showers,
flush toilets, and laundry. Barbecues,
fire pits, and tables in every site.

LONG RAVINE CAMPGROUND

26909 Rollins Lake Rr., Colfax
530-346-6166

orchardspringscampground.com
58 sites surrounded by pines and
oaks offering showers with picnic
tables, and barbecues in every
site. Restaurant offers views of the
beach and excellent breakfasts and
lunches. Other facilities include a
camp store, floating gas pumps.

**ORCHARD SPRINGS
CAMPGROUND**

19085 Larsen Rd., Grass Valley
530-346-0073

orchardspringscampground.com
60 sites with 18 full hookups and
cabins nestled in pines and cedars.
Located near the dam - great
location for fishing. Boating slips, hot
showers, flush toilets, camp store
and group barbecue area with tables.

PENINSULA CAMPGROUND

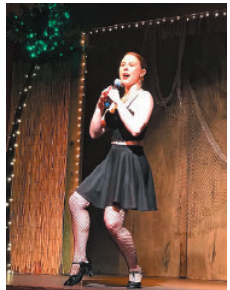
21579 You Bet Rd., Grass Valley
530-477-9413

orchardspringscampground.com
78 sites in a family-friendly
atmosphere. Shaded spacious
lakeview, lakeside and wooded

Off BROADSTREET

Cabaret Dessert Theatre

“Nevada County’s Most Unique Live Theatre”



New Original or Well-Known Musical Comedies!

Serving Music, Laughter & Fun Since 1989

For Schedule Info Visit:

www.offbroadstreet.com

“It’s always a party at Off Broadstreet!”

305 Commercial Street, Nevada City

Reservations: (530) 265-8686

sites with clean flush toilets and hot showers. Great for fishing, water sports, and swimming.

CAMPING IN WASHINGTON, CALIFORNIA

Located at the base of the Washington Ridge along the South Fork of the Yuba River between Nevada City and the Hwy 20/I-80 intersection. Directions: Leaving Nevada City head east on Hwy. 20 for approximately 13 miles, turn left onto Washington Rd. which winds its way down the canyon for about 6 miles. Fill up before your head out - there's no gas in the area.

LITTLE TOWN CAMPGROUND

31041 Relief Hill Rd., Washington
530-265-2832

littletowncampground.com

River-front camping, camp store, coin-operated showers, 18 sites with water and electric hookups. Basketball, volleyball, horse shoes, and swings. Great area for OHV activities.

RIVER REST RESORT CAMPGROUND

15274 Washington Rd., Washington
530-265-4306

riverrestresort.com

Tent and RV camping on the banks of the Yuba River. Great for swimming and wheeling!

HIGHWAY 20/TAHOE NATIONAL FOREST CAMPING

Located east of Nevada City in the Tahoe National Forest area. For more information call the Nevada City Ranger District at 530-265-4531. Campfires typically not allowed in the summer months - check with the rangers first.

WHITE CLOUD CAMPGROUND

45 tent & RV sites. Open May 22-October 15. Adjacent trails for hiking and mountain biking. Elevation 4,200.

SKILLMAN CAMPGROUND

Open to all users. Some sites have corrals, hitching posts, and horse troughs. Next to trails and OHV areas. Open May 22-October 15. Elevation 4,400.

BOWMAN LAKE CAMPGROUND

Remote campground with limited services. 7 campsites with tables, fire rings, and bear lockers. No trash - pack it out. Rough dirt road, high clearance vehicle required, one lane sections. Elevation 5,500

LINDSEY LAKE CAMPGROUND

Primitive campground with 12 campsites and vault toilets. No trash service or water - pack it out. Rough dirt road, high clearance recommended. Open July 1-October 1. Check snow conditions before going. Elevation 6,200.

CARR LAKE CAMPGROUND

Hike-in campground (short hike) featuring 11 sites on Carr Lake. Rough dirt road. Open May 27-October 15. Check weather conditions. No trash service or water - pack it out. Elevation 6,600.

JACKSON CREEK CAMPGROUND

A remote campground with 14 campsites with tables and bear lockers, vault toilets. Rough one-lane road. Elevation 5,600.

CANYON CREEK CAMPGROUND

A remote campground with 20 sites, vault toilets, and bear lockers. Rough road - high clearance vehicle required. No trash or running water - pack it out.

GROUSE RIDGE CAMPGROUND

Located at the top of Grouse Ridge with incredible vistas. Extensive hiking in the area and numerous alpine lakes. 9 campsites with tables and fire rings. Vault toilet.

No trash or running water - pack it out. Open May-Snow. Check weather conditions. Rough road, high clearance recommended. Elevation 7,400.

FAUCHERIE GROUP CAMPGROUND

A group campground offering 2-25 person sites on the edge of Faucherie Lake. Fire rings, grills, and bear lockers. Vault toilets and trash service. Rough narrow road, high clearance vehicles recommended.

■ RESTAURANTS



AMERICAN

ALEXANDER'S STATION STEAK HOUSE

400 Railroad Ave., Nevada City
530-265-4492 • Alexanders-station.com

ALTA SIERRA COUNTRY CLUB — THE TIMBERS

11897 Tammy Way, Grass Valley
530-273-2041 • altasierraacc.com

BEACH HUT DELI

522 Sutton Way, Grass Valley
530-477-5151 • beachhutdeli.com

BISTRO 221

221 Broad St., Nevada City
530-265-0221 • bistro221nevada.com

BROAD STREET BISTRO & GALLERY

426 Broad St., Nevada City
530-265-4204 • broadstreetbistro.com

BURGER & CREAM

736 Taylorville Rd, Grass Valley
530-648-4090 • burgerandcreamca.com

CAFÉ CORVUS

154 Mill St., Grass Valley
530-802-5102 • corvusbakery.com

CHARLIE'S CAFE

145 S. Auburn St., Grass Valley
530-274-1839 • facebook.com/charliescafegrassvalley

CIRINO'S AT MAIN STREET

213 W. Main St., Grass Valley
530-477-6000 • cirinosatmainstreet.com

CRAZY HORSE SALOON & GRILL

230 Commercial St., Nevada City
530-265-4000 • CrazyHorseNC.com

DAY BREAK CAFE

17438 Penn Valley Dr., Penn Valley 530-432-1216 • facebook.com/pennvalleybreakfastandlunchcafe

FRIAR TUCK'S RESTAURANT

111 N. Pine St., Nevada City
530-265-9093 • friartucks.com

HAPPY APPLE KITCHEN

18532 Colfax Hwy., Chicago Park
530-273-2822 • bierwagenshappyapplekitchen.com

HEARTWOOD

237 Commercial St., Nevada City
530-470-6161 • heartwoodeatery.com

HOLBROOKE HOTEL

212 W. Main St., Grass Valley
530-460-4078 • holbrooke.com

HUMPTY DUMPTY KITCHEN

1711 E. Main St., Grass Valley
530-272-2251 • humptydumptykitchen.com

INTERNATIONAL HOUSE OF PANCAKES

746 Taylorville Rd., Grass Valley
530-272-7928 • ihop.com

LEFTY'S TACO HOUSE

840 E. Main St., Grass Valley
leftystacohouse.com

LEFTY'S GRILL

101 Broad St., Nevada City
530-265-5838 • leftysgrill.com

LUMBERJACKS RESTAURANT

2015 Nevada City Hwy., Grass Valley
530-477-8900 • lumberjacksrestaurant.com

NATIONAL EXCHANGE HOTEL

211 Broad St., Nevada City
530-265-4551 • thenationalhotel.com

NEVADA CITY CLASSIC CAFE

216 Broad St., Nevada City
530-265-9440 • ncclassiccafe.com

NORTHRIDGE

773 Nevada St., Nevada City
530-478-0470
17464 Penn Valley Dr., Penn Valley
530-432-0700 • northridgerestaurant.com

ONE II KITCHEN & BAR

300 Commercial St., Nevada City
111kitchen.com

THE ORGANIC GRILL

35 Argall Way, Nevada City
530-265-8025 • californiiaorganics.com

PINE STREET BURGERS

1249 E. Main St., Grass Valley
530-477-5054 • pinestreetburgers.com

ROOST

141 E. Main St., Grass Valley
530-446-6807 • roostgv.com

SIERRA SQUEEZE BURGER

10067 Pleasant Valley Road Penn Valley 530-432-7601 • facebook.com/sierrasqueezeburger

SOUTH PINE

102 Richardson St., Grass Valley
530-274-0261 • southpinecafe.com

SUNRISE CAFÉ & GRILL

10934 Combie Rd., South Nevada County
530-268-1908 • sunrisecafeauburn.com

TACK ROOM RESTAURANT & BAR

17356 Penn Valley Dr., Penn Valley
530-432-1126 • tackroompv.com

TOFANELLI'S CASUAL ITALIAN - AMERICAN BISTRO

302 W. Main St., Grass Valley
530-272-1468 • tofanellis.com

TWELVE 28 KITCHEN

10118 Commercial Ave., Penn Valley
530-446-6534 • twelve28kitchen.com

VALENTINA'S ORGANIC BISTRO & BAKERY

841 Sutton Way, Grass Valley
530-272-4470 • valentinasantitasorganicbistroandbakery.com

WATERSHED AT THE OWL

134 Mill St., Grass Valley
530-2070 • watershedattheowl.com

THE WILLO STEAKHOUSE

16898 Hwy. 49, Nevada City
530-265-9902 • thewillo.com

ASIAN & SUSHI**AOZORA SUSHI**

149 South Auburn St., Grass Valley
530-615-4613 • facebook.com/aozora.sushi

ASIAN GARDEN RESTAURANT

2074 Nevada City Hwy., Grass Valley
530-273-0666 • asiangardeng.com

CHANDARA THAI

716 Freeman Ln. Grass Valley
530-802-5168 • chandaragrassvalley.com

CHINA HOUSE

17412 Penn Valley Dr., Penn Valley
530-432-0189 • eatchinahouse.com

FRED'S SZECHUAN CHINESE RESTAURANT

224 Broad St., Nevada City
530-478-9072 • facebook.com/freds-chineserestaurant

INDIA OVEN

722-L Freeman Ln., Grass Valley
530-477-5670 • theindiaoven.com

KAIDO JAPANESE RESTAURANT

207 W. Main St., Grass Valley
530-274-0144 • Kaidosushi.com

MOI'S THAI CAFÉ

11332 Pleasant Valley Rd., Penn Valley
530-205-9801 • mois-thai-cafe.edan.io

PANDA EXPRESS

688 Sutton Way, Grass Valley
530-273-1040 • pandaexpress.com

PANOY BISTRO

442 Colfax Ave., Grass Valley
530-268-5267 • panoybistro.com

**ROYAL DRAGON
CHINESE BUFFET**

101 W. McKnight Way, Grass Valley
530-272-2868 • royaldragon2.com

SOPA THAI

312-316 Commercial St., Nevada City
530-470-0101 • sopathai.net

SUSHI AT NOURISH

106 Union St., Nevada City
530-478-1770 • sushiatnourish.com

SUSHI IN THE RAW

315 Spring St., Nevada City
530-478-9503 • sushiintheraw.net

SUSHI-Q

238 Commercial St., Nevada City
530-265-5757 • sushinevadacity.com

TAO TE CAFÉ

151 Mill St., Grass Valley
530- 477-0677 • taotecafe.com

TASTE OF THAI

204 W. Main St., Ste. 103.,
Grass Valley
530-274-2968 • tasteofthaigv.com

WAY YUM SUSHI TO GO

109 Argall Way, Nevada City
530-265-4300 • facebook.com/
Way-Yum-Sushi-to-Go

BAKERIES & BAGELS

BLUE COW DELI

17500 Penn Valley Dr., Penn Valley
530-432-5500 • bluecowdeli.com

BUBBA'S BAGELS

1943 Nevada City Hwy., Grass Valley
530-272-8590 • facebook.com/
Bubbass-Bagels

CAKE BAKERY & CAFÉ

131 Mill St., Grass Valley
530-615-4126 • cakebakerygv.com

**CALEB'S CREAMERY
& COFFEE**

17329 Penn Valley Dr., Penn Valley
530-432-3129 • calebscreamery.com

CORVUS BAKERY

154 Mill St., Grass Valley
530-802-5102 • corvusbakery.com

DAILY DONUTS

117 W. McKnight Way, Grass Valley
530-272-8160 • daily-donuts-grass-
valley.edan.io

EMILY'S CATERING & CAKES

421 Colfax Ave., Grass Valley
530-409-3716 • emilyscateringand-
cakes.com

FLOUR GARDEN BAKERY

109 Neal St., Grass Valley
530-477-2253
999 Sutton Way, Grass Valley
530-272-2043 • flourgarden.com

**THE GRISTMILL BAKERY
DELI CAFE**

10042 Wolf Rd., Ste.E, Grass Valley
530-268-0576 • gristmill.biz

RALEY'S BAKERY

692 Freeman Ln., Grass Valley
530-272-1958 • raleys.com

SAFEWAY BAKERY

867 Sutton Way, Grass Valley
530-273-2249

SAVEMART BAKERY

12054 Nevada City Hwy., Grass Valley
530-477-9511 • savemart.com

SPD BAKERIES

735 Zion St., Nevada City
530-265-4596
129 West McKnight Way, Grass Valley
530-272-5000 • spdmarket.com

**THREE GINGERS BAKING
COMPANY**

Penn Valley
530-205-8078 • facebook.com/
threeringersbakingcompany

**THREE FORKS BAKERY
& BREWING CO**

211 Commercial St., Nevada City
530-470-8333 • threeforks.com

CATERING

**ALTA SIERRA WINE SHOP
PRIVATE PARTIES**

10074 Alta Sierra Dr., Grass Valley
530-273-9463 • Altasierrawineshop.com

**ANTONIO AYESTARÁN
CUSTOM CATERING**

Grass Valley
530-401-8462 • antoniocatering.net

APEX CATERING

P.O. Box 1753, Grass Valley
 530-477-0260 • apexcatering4u@hotmail.com

AT YOUR SERVICE

Penn Valley
 530-913-5090 • 530-277-7020
 Yourcateringteam.com

BILL'S CHUCKWAGON

Grass Valley
 530-913-4519 • billschuckwagon.com

BLUE COW DELI

17500 Penn Valley Dr., Penn Valley
 530-432-5500 • Bluecowdeli.com

BLUE GINGER CATERING

P.O. Box 2277, Grass Valley
 530-277-6167 • BlueGingerCatering.com

BRIAR PATCH CATERING

290 Sierra College Dr., Ste. A,
 Grass Valley
 530-272-5333 • briarpatch.coop

CALLA LILY CREPES

214 Broad St., Nevada City
 530-615-7629 • callalilycrepes.com
 (special events catering)

GOLDEN GATE**SALOON CATERING
AT THE HOLBROOKE**

212 Main St., Grass Valley
 530-460-4078 • holbrooke.com/
 catering

EMILY'S CATERING & CAKES

421 Colfax Ave., Grass Valley
 530-409-3716 • emillyscateringand-
 cakes.com

EYE OF THE AVOCADO

eyeoftheavocado.com

FARM TO TABLE CATERING

11859 Tammy Way, Grass Valley
 530-615-7707 • Farm2tablecatering.
 com

GATHER AND FEAST

209 Commercial St., Nevada City
 530-559-1593 • Feastgather.com

SAVOR THE FLAVOR

530-748-9285 • savortheflavorbbq.com

SPD DELICATESSENS

735 Zion St., Nevada City
 129 McKnight Way, Grass Valley
 530-265-4596 • 530-272-5000
 spdmarket.com



ALEXANDER'S STATION
 STEAKHOUSE & EVENT CENTER



Owners-Chef
 Vincent Alexander
 & wife Lisa



- Wedding Facility - Up to 250 Guests
- Special Event Space from 20 to 175
- Fresh Seasonal Produce from our Hidden Valley Farm
- Wine Dinners
- Special Holiday Menus

400 Railroad Ave-Nevada City (Former location of Trolley Junction
 @ Northern Queen Inn)

530-265-4492 - Reservations recommended on Resy.com
 Menus and more available at <https://alexanders-station.com/>

Dinner: Tues-Sun: 5:00pm-9:00pm

"Sparkling" Sunday Brunch 10:30am-2:00pm

Creekside Patio "Happy Hour" menu Thur-Sat 4:00pm-6:00pm
 with Live music when available (Spring/Summer), dog friendly.

WAREHOUSE DELI

12537 Loma Rica Dr., Grass Valley
530-273-5205

COFFEE & JUICE HOUSES

BREW BAKERS FAMILY CAFÉ

209 West Main St., Grass Valley
530-272-7168 • brewbakersgv.com

BRIARPATCH

290 Sierra College Dr., Grass Valley
530-272-5333 • briarpatch.coop

**CALEB'S CREAMERY
& COFFEE**

17329 Penn Valley Dr., Penn Valley
530-432-3129 • calebscreamery.com

CAPPUCCINO FACTORY

700 Sutton Way, Grass Valley
530-274-2130 • facebook.com/
cappuccinofactory

CAROLINE'S COFFEE

128 S. Auburn St., Grass Valley
530-273-6424 • carolinescoffee.com

DUTCH BROS COFFEE

2094 Nevada City Hwy, Grass Valley
541-955-4700 • dutchbros.com

ELIXART

408 Broad St., Nevada City
530-265-1901 &
104 E Main St., Grass Valley
530-802-5129 • www.elixart.com

FABLE COFFEE

167 Mill St., Grass Valley
530-802-5333 • fablecoffee.com

FUDENJÜCE

815 Zion St., Nevada City
530-265-5282 • fudenjüce.com

**GRASS VALLEY FLORIST
& DRIVE THRU COFFEE**

2153 Nevada City Hwy., Grass Valley
530-273-2223 • grassvalleyflorist.com

HONEY & CREAM

17329 Penn Valley Dr., Penn Valley
honeyandcream.io

Tess' Kitchen Store & **Tess' KITCHEN & CULINARY**

NOW

2 LOCATIONS TO SERVE YOU!

DOWNTOWN 115 Mill Street Grass Valley 530-273-6997	FOWLER CENTER (Between Save Mart & Verizon) 2066 Nevada City HWY 530-271-1400
--	---

JAMBA JUICE

650 Freeman Lane, Ste. P, Grass Valley
530-272-2476 • jambajuice.com

JAVA JOHN'S

306 Broad St., Nevada City
530-265-3653 • everyonescoffeehouse.com

SIERRA MOUNTAIN COFFEE ROASTERS

671 Maltman Dr., Grass Valley
530-477-5282 • facebook.com/sierramountaincoffee

STARBUCKS COFFEE

716 Freeman Ln., Grass Valley
530-274-1595
71867 Sutton Way, (in Safeway),
Grass Valley
530-273-2249 10005 Combie Rd.,
Auburn
530-268-0634 • starbucks.com

VALENTINA'S ORGANIC BISTRO & BAKERY

841 Sutton Way, Grass Valley
530-272-4470 • valentinasantorganicbistroandbakery.com

DELI/SANDWICH SHOPS**AFTERNOON DELI**

101-D West McKnight Way,
Grass Valley
530-273-6066 • afternoondeli.com

ALTA SIERRA MARKET & DELI

10182 Alta Sierra Dr., Grass Valley
530-273-5751 • facebook.com/AltaSierraDeli

BACKPORCH MARKET

35 Colfax Ave., Grass Valley
530-271-7111 • backporchmarket.com

BEACH HUT DELI

522 Sutton Way, Grass Valley
530-274-7873 • beachhutdeli.com

BLUE COW DELI

17500 Penn Valley Dr., Penn Valley
530-432-5500 • bluecowdeli.com

BRIAR PATCH MARKET/DELI

290 Sierra College Dr., Grass Valley
530-272-5333 • briarpatch.coop

CEDAR RIDGE Y MARKET

13477 Colfax Hwy., Cedar Ridge
530-477-6047

LA GASTRONOMIA FRESH FOODS

760 South Auburn St., Ste. G
Grass Valley
530-798-6021 • lagsstronomia.us

PORT OF SUBS/EXPRESS MARKET

407 Hollow Way, Nevada City
30-478-1788 • portofsubs.com

PORT OF SUBS

873 Sutton Way, Grass Valley
530-477-2660 • portofsubs.com

RALEY'S MARKET/DELI

692 Freeman Ln., Grass Valley
530-272-1958 • raleys.com

SAFEWAY DELI

867 Sutton Way, Grass Valley
530-273-2249 • safeway.com

SAVEMART/DELI

12054 Nevada City Hwy., Grass Valley
530-477-9511 • savemart.com

SOURDOUGH & CO.

121 Neal St., Grass Valley 5
30-537-3200) • grassvalley.sourdoughandcompany.com

SPD MARKET/DELI

735 Zion St., Nevada City
530-265-4596
129 West McKnight Way, Grass Valley
530-272-5000 • spdmarket.com

COSMIC ROOTS MARKET

115 S. Pine St., Nevada City
530-470-0166 or 530-265-4988 •
cosmicrootsmarket.com

SUBSATIONAL

150 S. Auburn St., Grass Valley
530-273-4782

SUBWAY

2096 Nevada City Hwy., Grass Valley
530-273-8547
716 Freeman Ln., Grass Valley
530-273-7789
10033 Combie Rd., Auburn
530-268-4775 • subway.com

THE GRISTMILL BAKERY DELI CAFE

10042 Wolf Rd. Ste. E
Lake of the Pines
530-268-0576 • gristmill.biz

THE HAM STAND

821 Zion St., Nevada City
530-212-3784 • Thehamstand.com

WAREHOUSE DELI

12537 Loma Rica Dr. Grass Valley
530-273-5205

FAST FOOD

BIG A ROOT BEER DRIVE-IN

810 E. Main St., Grass Valley
530-273-3243 • bigadrivein.com

BURGER KING

1857 E. Main St., Grass Valley
530-272-6226 • bk.com

CARL'S JR. RESTAURANT

729 Taylorville Rd., Grass Valley
530-477-5649 • carlsjr.com

JACK IN THE BOX

1801 E. Main St., Grass Valley
530-272-3041 • jackinthebox.com

JIMBOY'S TACOS

1937 Nevada City Hwy., Grass Valley
530-477-9490 • jimboystacos.com

KENTUCKY FRIED CHICKEN /A&W

1983 Nevada City Hwy., Grass Valley
530-273-1001 • kfc.com

LITTLE CAESARS

716 Freeman Ln., Grass Valley
530-273-2300 • littlecaesars.com

LONDON'S BEST FISH & CHIPS

151 W. McKnight Way Grass Valley,
530-274-1314 • facebook.com/London-Best-Fish-Chip

MCDONALD'S OF GRASS VALLEY

1954 Nevada City Hwy., Grass Valley
530-273-2518 • mcdonalds.com

PANDA EXPRESS

688 Sutton Way, Grass Valley
530-273-1040 • pandaexpress.com

TACO BELL

109 Olympia Park Rd., Grass Valley
530-477-8163
16978 Penn Valley Rd., Penn Valley
530-432-9090 • tacobell.com

WENDY'S

875 Sutton Way, Grass Valley,
Grass Valley

ICE CREAM/ YOGURT/CANDY

BASKIN-ROBBINS

151-C W. McKnight Way, Grass Valley
530-274-3188 • baskinrobbins.com

CALEB'S CREAMERY & COFFEE

17329 Penn Valley Dr., Penn Valley,
530-432-3129 • calebscreamery.com

CRAZY 4 YOGURT

10136 Commercial Ave., Penn Valley
530-432-2490 • facebook.com/
Crazy-4-Yogurt-106128890877254

CULTURE SHOCK YOGURT

851 Sutton Way, Grass Valley
530-274-3444 • cultureshockyogurt.com

FOOTHILL MERCANTILE

121 Mill Street, Grass Valley
530-273-8304 • foothillmercantile.com/
collections/candy

HONEY & CREAM

17329 Penn Valley Dr., Penn Valley
honeyandcream.io

LAZY DOG CHOCOLATERIA

111 Mill St., Grass Valley
530-274-0774 • spotlazydog.com

NEVADA CITY CHOCOLATE SHOPPE

236 Broad St., Nevada City
530-265-3448 • nevadacitychoco-
lateshoppe.com

TREATS

210 Main St., Nevada City
530-913-5819 • treatsnevadacity.com

TRUFFLE SHOP

408 Broad St., Nevada City
530-265-3539 • thetrufflesop.com

INTERNATIONAL

AFTERNOON DELI

101 West McKnight Way,
Grass Valley
530-273-6066 • afternoondeli.com

CALLA LILY CREPES

214 Broad St., Nevada City
530-615-7629 • callalilycrepes.com

DIEGO'S - CHILEAN CUISINE

217 Colfax Ave., Grass Valley
530-477-1460 • diegosrestaurant.com

LIKA'S QUARTER CAFÉ

401 Commercial St., Nevada City
530-265-6138 • Likasquartercafe.com

INDIA OVEN

722 Freeman Ln L, Grass Valley
530-477-5670 • indiaoven.com/
grassvalley

MEZÉ EATERY

106 Mill St., Grass Valley
530-383-2382 • Mezeeatery.com

WHEYWARD GIRL CREAMERY

209 Commercial St., Nevada City
530-478-1665

ITALIAN

ALLORO CUCINA ITALIANA

124 Bank St., Grass Valley
530-273-3555 • allororistorante-grassvalley.com

CIRINO'S AT MAIN STREET

215 W. Main St., Grass Valley
530-477-6000 • cirinosatmainstreet.com

PLAYERS PIZZA, PASTA & MORE

10161 Commercial Ave., Penn Valley
530-432-1222 • pvplayerspizza.com

SERGIO'S CAFFE

109 Mill St., Grass Valley
530-274-2600 • sergioscafe.com

TOFANELLI'S CASUAL ITALIAN - AMERICAN BISTRO

302 W. Main St., Grass Valley
530-272-1468 • tofanellis.com

TUSCANY GARDENS

11370 Pleasant Valley Rd.,
Penn Valley
530-432-2498 &
491 Sutton Way, Grass Valley
530-271-1300 • tuscanygardensrestaurants.com

MEXICAN

CASA LAS KATARINAS MEXICAN RESTAURANT

10100 Alta Sierra Dr., Grass Valley
530-274-1447 • laskatarinas.com

CEDAR RIDGE Y MARKET

13477 Colfax Hwy., Grass Valley
530-477-6047 • cedar-ridge-y-market.edan.io

CEASAR'S QUICK LUNCH

2042 Nevada City Hwy, Grass Valley
530-615-4762

EL AGAVE TAQUERIA

10007 Combie Rd., South
Nevada County
530-268-3554 • elagavecombie.com

EL FAVORITO TAQUERIA

550 Mill St., Grass Valley
530-802-5211 &
574 Sutton Way, Grass Valley
530-802-5529 • Elfavoritotaquerias.com

EL MILAGRO

760 South Auburn Ste. A,
Grass Valley
530-802-5229 • elmilagromenu.com

JIMBOY'S TACOS

1937 Nevada City Hwy., Grass Valley
530-477-9490 • jimboystacos.com/
stores/grass-valley/?dist=1.8

LEFTY'S TACO HOUSE

840 E. Main St., Grass Valley
leftystacohouse.com

MARGARITA'S MEXICAN RESTAURANT & CANTINA

988 Plaza Dr., Grass Valley
530-272-6974 • margaritasrocks.com

MARIA'S MEXICAN RESTAURANT

226 E. Main St., Grass Valley
530-274-2040 • mariasgrassvalley.com

MAYAS AUTHENTIC MEXICAN FOOD

716 Freeman Ln., Ste. F, Grass Valley
530-477-7289 • mayasmexicanfood.com



**FARMERS
MARKET** EST. 1980

Saturday @ Dollar Tree ♦ 8am - 12:30pm ♦ thru Nov 19
Tuesday @ Jamba Juice ♦ 9am-1pm ♦ thru Aug 30
Thursday @ Downtown GV ♦ 5pm-9pm ♦ thru July 28
www.gvfarmersmarket.org GRASS VALLEY

MI PUEBLO MEXICAN TAQUERIA
104 Union Alley, Nevada City
530-272-6974 • mipueblo-taqueria.com

TAQUERIA EL GABAN MEXICAN GRILL
1041 Sutton Way, Grass Valley
530-205-9441 • Taqueria-el-gab-an-mexican.com

PASTIES

THE GRASS VALLEY PASTY COMPANY
100 S. Auburn St. Grass Valley
530-802-5202 • grass-valley-pasty-co.business.site/?utm_source=gm-b&utm_medium=referral

MARSHALL'S PASTIES
203B Mill St., Grass Valley
530-272-2844 • facebook.com/Marshalls-Pasties

PIZZA

BRIARPATCH MARKET/DELI
290 Sierra College Dr., Grass Valley
530-272-5333 • briarpatch.coop

DOMINO'S PIZZA
113 Neal Street., Grass Valley
530-270-0333 • dominos.com

FRANK'S PIZZA
122 E. Main St., Grass Valley
530-273-4622 • frankspizzagrassvalley.com

LAMPPOST PIZZA
137 Olympia Park Rd., Grass Valley
530-274-1444 • lampost-backstreet.com

LITTLE CAESARS
716 Freeman Ln., Grass Valley
530-273-2300 • littlecaesars.com

MINER MOE'S
102 Argall Way, Nevada City
530-265-0284 • miner-moes-pizza.com

MOUNTAIN MIKE'S PIZZA
151 W. McKnight Way, Grass Valley
530-272-9066 • mountainmikes.com

NORTHRIDGE
773 Nevada St., Nevada City
530-478-0470 &
17464 Penn Valley Dr., Penn Valley
530-432-0700 • northridgerestaurant.com

PAPA MURPHY'S TAKE N BAKE
2048 Nevada City Hwy., Grass Valley
530-274-8900 &
151-A W. McKnight Way, Grass Valley
530-272-3589 • papamurphys.com

PETE'S PIZZA AND TAP HOUSE
114 W. Main St., Grass Valley
530-274-9600 • petes-pizza.com

PLAYERS PIZZA, PASTA & MORE
10161 Commercial Ave., Penn Valley
530-432-1222 • pvplayerspizza.com

ROUND TABLE PIZZA
686 Sutton Way, Grass Valley
530-273-6155 &
10894 Combie Rd., Lake of the Pines
530-268-0433 • roundtablepizza.com

THE PIZZA JOINT
228 Commercial St., Nevada City
530-470-6100 • thepizzajointnc.com

THREE FORKS BAKERY & BREWING CO
211 Commercial St., Nevada City
530-470-8333 • threeforks.com

TRAILBLAZER CRAFT PIZZA & BREWS
15690 Johnson Pl., Grass Valley
530-272-1095 • trailblazerpizza.com

TUSCANY GARDENS PIZZERIA & CAFE
11370 Pleasant Valley Rd., Penn Valley
530-432-2498 &
491 Sutton Way, Grass Valley
530-271-1300 • tuscanygardens-restaurants.com

THE ORGANIC GRILL
135 Argall Way, Nevada City
530-265-9392 • californiainorganics.co



PRMI

Primary Residential
Mortgage, Inc.

The Verger Group

Tina Skrukrud & Kim Wydra

MORTGAGE SPECIALISTS



Purchase | Refi | FHA/USDA | VA | Reverse | Construction | Renovation

**We're here to help with all
your home loan needs.**

Call us today!

530.274.2801

231 East Main St. | Grass Valley, CA | primeres.com/GrassValley

Licensed by the Department of Financial Protection and Innovation (DFPI) under the California Residential Mortgage Lending Act 4130403. A copy of our Privacy Policy and Notice is accessible by going to Primary Residential Mortgage's website and clicking on the "Privacy Policy" link located at the bottom of the page. <https://www.primeres.com/privacy-policy>

■ VINEYARDS & WINERIES

Nevada County Wineries offer a range of styles and flavors of wine to please every palate. Whether you make it an excursion in the countryside or visit one of the downtown tasting rooms, there's a wine experience to enjoy. Nevada County offers spectacular views, rolling vineyards, wine caves and barrel rooms, charming tasting rooms and picnic areas, creating great wine tourism adventures where the person pouring the wine is often the winemaker.

NEVADA COUNTY WINERIES

AVANGUARDIA WINES

avanguardiawines.com
13028 Jones Bar Rd., Nevada City
530-274-9482
Open Weekends
163 Mill St. Grass Valley
530-274-9911
Open Daily

CLAVEY VINEYARDS

claveywine.com
232 Commercial St., Nevada City
530-906-1394
Open Fri-Sat-Sun.

DAVE THE WINE MERCHANT (INSIDE FOOTHILL FLOWERS)

102 W. Main St., Grass Valley
866-746-7293
Open Mon-sat

GRAY PINE WINERY

GrayPineWinery.com
19396 Branding Iron Rd., Penn Valley
530-432-7045
Open Most Saturdays or
by appointment



Meg Curry

DRE 02100077
mcurry8626@gmail.com.
Cell: (510) 882-3298
Office: (530) 274-8888, Ext. 5



Teresa Dietrich

Broker Associate • DRE 01222347
Teresa@GoldCountryRanches.com
Full Time, Full Service Realtor
530.362.6806
www.GoldCountryRanches.com

Nevada County Realty, keeping it Local since 1997

from backwoods goat trails to the finest estate homes, ranches
and townhomes, we can handle it all with personal service.

NEVADA COUNTY REALTY, INC.
470 South Auburn Street, Suite E, Grass Valley, CA 95945

www.nevadacountyrealty.com

Nevada County Realty DRE 01477391





LUCCHESI VINEYARDS & WINERY

lucchesivineyards.com
19698 View Forever Ln., Grass Valley
128 Mill St., Grass Valley
530-273-1596
Open Daily

MONTOLIVA VINEYARD & WINERY

montoliva.com
15629 Mount Olive Rd. Chicago Park
530-346-7359
Open Weekends or by appointment

MOUNTAIN RANCH WINERY

mountainranchwinery.com
14364 McCourtney Rd., Grass Valley
209-747-7733

NAGGIAR VINEYARDS

naggiarvineyards.com
18261 Rosemary Ln., Grass Valley
530-268-9059
Open Fri-Sat-Sun. or by appointment

NEVADA CITY WINERY

ncwinery.com
321 Spring St., Nevada City
530-265-9463
Open Daily

SIERRA STARR VINEYARD

sierrastarr.com
11179 Gibson Dr., Grass Valley
124 West Main St., Grass Valley
530-477-8282
Open Daily

SZABO VINEYARDS

szabovineyards.com
14293 Gold Fork Rd., Nevada City
316 Broad St., Nevada City

530-265-8792

Open Thursday-Sunday

VIAN ESTATES VINEYARD & WINERY

vianestates.com
22406 Hidden Ranch Rd. Auburn
855-231-7085
By appointment only

WINE SHOPS

ALTA SIERRA WINE SHOP

10074 Alta Sierra Dr., Grass Valley
530-277-1587

CARRINGTON'S FINE WINES

242 Commercial St., Nevada City
530-265-0195

CORK 49

cork49gv.com
142 Mills St., Grass Valley
530-277-8524

NEW WEST WINE CO.

newwestwine.com
212 West Main St. Ste 1, Grass Valley
30-446-6798

FOR MORE INFORMATION ON
LOCAL WINERIES AND EVENTS,
GO TO SIERRAVINTNERS.COM.
BROCHURES AND WINE TOURING
MAPS ARE LOCATED AT THE LOCAL
CHAMBERS OF COMMERCE OR
WINERY TASTING ROOMS.



The area's only
Specialty Food &
Wine Market



Voted BEST Deli & Specialty Foods in Nevada County!

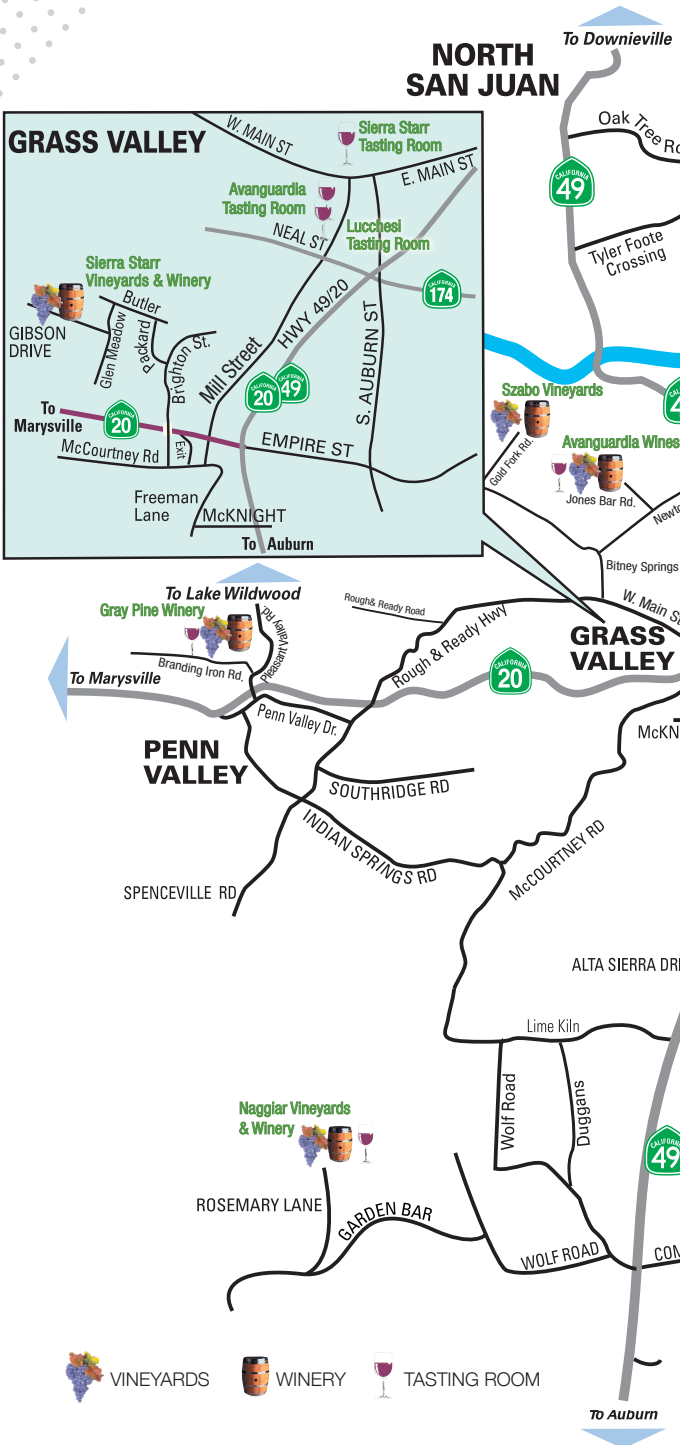
Artisan Cheeses | Charcuterie | Fresh Made Pasta
Chocolates | Desserts | Platters

Quick Take-Home Fresh Cooked Meals | Gifts for Cooks

www.backporchmarket.com • Easy Parking

Open Tues to Sat 10-6 | 135 Colfax Ave. Grass Valley | 530-271-7111

WINE



COUNTRY

of the northern sierras



THE WAY MOVIES WERE MEANT TO BE SEEN



107 ARGALL WAY, NEVADA CITY, CA 95959
SHOWTIMES: (530) 265-8262 ALL SHOWINGS ARE 21+

WWW.THEONYXTHEATRE.COM



ONYX
DOWNTOWN
AT THE NEVADA THEATRE

NEW FOR 2022

THE ONYX
PROGRAMMING
SHOWING IN THE
NEWLY RENOVATED
NEVADA THEATRE!

THE NEVADA THEATRE:
401 BROAD STREET
NEVADA CITY, CA 95959

SHOWTIMES AT
THEONYXTHEATRE.COM

■ BREWERIES & TAP HOUSES

**1849 BREWING
COMPANY, INC.**
1849brewingco.com
468 Sutton Way, Grass Valley
530-477-1849

BULLMASTIFF BREWING
bullmastiffbrews.com
10183 Commercial Ave. Penn Valley
530-802-0099

GRASS VALLEY BREWING CO.
Gvbrew.com
141 E. Main St., Grass Valley
530-271-2739

**JERNIGAN'S TAP HOUSE
AND GRILL**
jernigansgrill.com
123 Argall Way, Nevada City
530-265-6999

**PETE'S PIZZA AND
TAP HOUSE**
Petes-pizza.com
114 W. Main St., Grass Valley
530-274-9600

RIBALD BREWING
124 Argall Way, Nevada City
530-264-7319

**THREE FORKS BAKERY
& BREWING CO.**
threeforksnc.com
211 Commercial St., Nevada City
530-470-8333

**THIRSTY BARREL TAPHOUSE
& GRILLE**
thirstybarrel.com
116 Neal St., Grass Valley
530-802-5488

WILD EYE PUB
wildeyepub.com
535 Mill St., Grass Valley
530-446-6668

**NEVADA COUNTY MEAD
COMPANY**
ncmeadco.com
10175 Commercial Ave., Penn Valley
530-420-6323

WE'VE BEEN WAITING TO SERVE YOU FOR 39 YEARS



SNUGS

cozy • comfortable • carefree

VOTED BEST:

OVERALL RESTAURANT • BAR
LUNCH • QUALITY/VALUE
ITALIAN RESTAURANT • CHEF
BLOODY MARY

WWW.CIRINOSATMAINSTREET.COM

213 W. MAIN ST., GV | 530.477.6000

NIGHT LIFE

CIRINO'S AT MAIN STREET
213 W Main St., Grass Valley
530-477-6000 • cirinosatmain
street.com

**CRAZY HORSE SALOON
& GRILL**
230 Commercial St., Nevada City
530-265-4000 • crazyhorsenc.com

DEW DROP INN
19729 Cerrito Rd., Grass Valley
530-268-1065

**FRIAR TUCK'S
RESTAURANT & BAR**
111 N. Pine St., Nevada City
530-265-9093

GOLDEN ERA
309 Broad St., Nevada City
530-264-7048 • goldeneralounge.com

GARY'S PLACE
158 Mill St., Grass Valley
530-272-5509

GRASS VALLEY BREWING CO.
141 E Main St., Grass Valley
530-271-2739



GOLDEN GATE SALOON
212 W Main St., Grass Valley
530-273-1353 • holbrooke.com

LEFTY'S GRILL
101 Broad St., Nevada City
530-265-5838 • leftysgrill.com

MC GEE'S ANNEX
315 Broad St., Nevada City
530-265-3205

MINE SHAFT
222 Broad St., Nevada City
530-265-6310
minshaftsaloona.com

**THE NATIONAL
EXCHANGE HOTEL**
211 Broad St., Nevada City
530-265-4551 • thenationalhotel.com
Closed Until 2019

NEVADA CLUB
108 W. Main St., Grass Valley
530-274-0947

**TACK ROOM RESTAURANT
& BAR**
17356 Penn Valley Dr., Penn Valley
530-432-1126

**THREE FORKS BAKERY
& BREWING CO**
211 Commercial St., Nevada City
530-470-8333 • threeforksnc.com

TOWERS CASINO
115 Bank St., Grass Valley
530-273-4100 • towerscasino.com

UNCLE SONNY'S
13475 Colfax Hwy., Grass Valley
530-273-7274

CA Lic. #847088

**WELCOME TO THE
neighborhood!**

**PRECISION
ELECTRIC**

Electrical

- Troubleshooting
- Remodels
- Construction
- Generators
- Panels

Safety + Security in your Electrical Systems

GENERAC

Clean Energy Solutions

Authorized

- Sales
- Service
- Warranty
- Installation

Automatic Standby Generator Systems

PEGV.NET
530-274-3438
140 East McKnight Way, Ste 2
Grass Valley, CA 95949



BEST

REAL ESTATE AGENT -
MARY MARGARETICH



THANK YOU
TO MY FRIENDS AND CLIENTS
FOR YOUR CONTINUED LOYALTY
AND SUPPORT.

Mary Has Won: 2011, 2012, 2013,
2015, 2016, 2018, 2019, 2020, 2021
& Runner up: 2014, 2017

This great honor would not be
possible without my wonderful
team and their efforts
towards excellence.



530-798-4466

2428 Nevada City Hwy, Grass Valley, CA 95945

■ PANNING GOLD

BRIDGEPORT

Highway 20 out of a Grass Valley to Penn Valley. Turn right onto Pleasant Valley Road and follow to the Historic South Yuba River Park at Bridgeport. The site includes the longest single span covered bridge in existence, an historic barn that houses authentic wagons and a hay press and a Visitor Center. Gold panning demonstrations are held every Saturday and Sunday during the summer and at special events. Supplies can be purchased at the Visitor Center. For more information, contact 530-432-2546

TOWN OF WASHINGTON

Travel on Highway 20 East of Nevada City and take the Washington exit. Pan at local camp grounds, Tahoe National Forest (TNF) Keleher Picnic Area on Yuba River two miles upstream from town, TNF Quartz Picnic Area further up-stream. More Information available at TNF offices, 631 Coyote St., Nevada City, CA 95959; 530-265-4531

■ KAYAKING & RAFTING

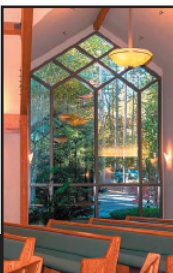
Nevada City is considered the central hub of the West Coast for water sports enthusiasts of all types. Known as a world-class white water destination with an abundance of class-1 through class-5 offerings, Downtown Nevada City is a short drive from the South Yuba, American, Bear and the south and middle sections of the North Fork of the Yuba River. Nevada City is in close proximity to the Sierra Nevada range which also offers an unlimited supply of pristine mountain lakes for recreational calm-water kayaking and canoeing.

TRIBUTARY WHITEWATER TOURS

Guided white water rafting in the Gold Country and Lake Tahoe on the American River, Truckee River, Yuba River and many more. From mild to wild (kids from 4 years to Class 5 expert only). Half-day to 4 days. 530-346-6812 or 800-672-3846, WhiteWaterTours.com or email rafting@whitewaterstours.com. whitewaterstours.com

FIRST CHURCH OF CHRIST, SCIENTIST

GRASS VALLEY, CALIFORNIA



SERVICES

375 Crown Point Circle, Grass Valley, CA 95945
Sunday: 10-11 am
Wednesday: 7:30-8:30 pm

READING ROOM

147 Mill Street
Grass Valley, CA 95945
Mon-Sat: 11-3 pm



(530) 273-9452 www.christiansciencegrassvalley.org

■ CYCLING

Nevada County has long been popular with bicyclists. Mountain biking has also become a big part of the tradition and Nevada County has become known far and wide for its mountain bike riding opportunities. Local trail guides for both road biking and mountain biking are available at local bike shops and Chamber of Commerce Visitor Centers.

**visit SierraNevadaGeoTourism.org
for mountain bike and road bike routes**

MOUNTAIN BIKE COUNTRY

For mountain bike riders, Nevada County is a year-round playground. Lush forests, rivers and lakes provide the backdrop for a pleasant cruise or a healthy cycling workout.

TOUR OF NEVADA CITY BICYCLE SHOP

457 Sacramento St., Nevada City
530-265-2187 • tourofnevadacity.com

MOUNTAIN RECREATION

Outfitters ONLY
491 E. Main St., Grass Valley
530-477-8006 • mtnrec.com

PACIFIC MOUNTAIN BIKE WORKS

15686 Johnson Pl., Grass Valley
530-274-2878

SIERRA EBIKE

11282 Pleasant Valley Rd.,
Penn Valley
530-503-9000 • sierraebike.com
Quality line of electric bikes

XTREME OUTFITTERS

654 Maltman Dr., Grass Valley
530-477-2377 • xtremeoutfitters.net
Bicycle sales, rentals and repairs.

FOR MORE INFORMATION ON CYCLING IN NEVADA COUNTY:

SIERRA EXPRESS

BICYCLE CLUB

228 Commercial St., PMB 163,
Nevada City
sierraexpress.org

BICYCLISTS OF NEVADA COUNTY (BONC)

P.O. Box 1311, Nevada City
530-205-3478 • bonc.org



■ OUTDOORS

Outdoor lovers will think they're in paradise when they discover the variety of walking, hiking, road and mountain biking, and wealth of other recreation activities available in and around Nevada County.

Detailed hiking and mountain biking tour maps, with distances and levels of difficulty, are available free at local chamber of commerce visitor centers and the Nevada City Ranger District office located at 631 Coyote St., Nevada City.



GOLF COURSES

- **Alta Sierra Country Club:** Semi-private 18-hole championship course with public play afternoons. 11897 Tammy Way, Grass Valley. 530-273-2010.
- **DarkHorse Golf Club:** Public, 18-hole championship course. Rated top public course by *Golf Magazine* and *Golf Digest*. Full practice facility, driving range, golf academy. Open daily. Reduced afternoon, senior and junior rates. 13450 Combie Road, Auburn/Grass Valley. 530-269-7900 or darkhorsegolf.com.
- **Lake of the Pines Golf Club:** Semi-private, 18-hole championship course, driving range, putting green and chipping facility. Open daily, 7 a.m. to 6 p.m. 11665 Lakeshore North, Auburn. 530-268-8337.
- **Nevada County Country Club:** Semi-private nine-hole course open to public weekday afternoons and all day weekends. 1040 E. Main St., Grass Valley. 530-273-6437.

DISC GOLF

- **Condon Park:** Rates as one of the best disc golf courses in California. Minnie Street off Butler Street in Grass Valley. 530-274-4350.
- **Western Gateway Park:** Open sunrise to sunset. Available to rent or for tournament play. 18560 Penn Valley Dr., Penn Valley. 530-432-1990.

PICKLEBALL

- **Memorial Park:** Six dedicated courts - a beautiful facility open to the public. Reserve a court at playtimescheduler.com. 350 Race St., Grass Valley. 530-274-4350
- **Western Gateway Park:** Open sunrise to sunset. Available to rent or for tournament play. 18560 Penn Valley Dr., Penn Valley. 530-432-1990.

DISC GOLF

- **Condon Park:** Rates as one of the best disc golf courses in California. Minnie Street off Butler Street in Grass Valley. 530-274-4350.
- **Western Gateway Park:** Open sunrise to sunset. Available to rent or for tournament play. 18560 Penn Valley Dr., Penn Valley. 530-432-1990.

TENNIS COURTS

- **Club Sierra:** 130 W. Berryhill Dr., Grass Valley. 530-477-8800.
- **Mautino Park:** 10609 Alta St., Grass Valley. 530-274-4350.
- **Memorial Park:** Race St. at Colfax Ave. Grass Valley. 530-274-4350.
- **Pioneer Park:** Nimrod St., Nevada City. 530-265-2496.
- **Ridge Racquet Club:** 1041 Ridge Rd., Grass Valley. 530-273-8514.
- **Western Gateway Regional Park:** Penn Valley Dr., Penn Valley. 530-432-1990.

NEIGHBORHOOD PARKS

- **Condon Park:** In Grass Valley, this large wooded park offers hiking, disc golf, an arboretum, basketball courts, horseshoe pits, bocce ball court, baseball field, and picnic and barbecue areas. You may rent the L.O.V.E. Building located on the park site for private parties and meetings. Minnie St. off Butler St. 530-274-4350.
- **Glenn Jones Picnic Area:** Adjacent to North Star Mining Museum, at the corner of McCourtney and Allison Ranch Road. A beautiful, secluded area alongside Wolf Creek with lawn and picnic tables. Quiet, shaded and peaceful. A great place to have lunch.
- **Mautino Park:** 10609 Alta St., Grass Valley's newest park is in the northwest section. The park offers tennis courts, basketball courts, volleyball courts and a soccer field as well as a playground.
- **Memorial Park:** Grass Valley's park has a lighted softball field, playground, horseshoes and shuffleboard, public swimming pool, tennis and picnic areas. 530-274-4350.
- **Pioneer Park:** Located in Nevada City on Nimrod Street, Pioneer Park has a public swimming pool (seasonal hours), playground, tennis courts, baseball fields, a band shell, horseshoe pits, picnic and barbecue areas, sand volleyball court, playground and meeting lodge. 530-265-2496.
- **Tobiassen Park:** Next to the Rood Center beyond library, off Hwy. 49, Nevada City. Ball field, pond, trails, picnic tables.
- **Western Gateway Regional Park:** This Penn Valley park has several baseball fields, basketball and tennis courts, trails, amphitheater, playground, exercise course, horse arena, picnic and barbecue area, and disc golf course. Cottage available for parties. Lots of on-leash walking trails and open space. Doggie bag dispensers and trash cans are located throughout the park. Plus, an off-leash dog park. 530-432-1990.

STATE HISTORIC PARKS

- **Donner Memorial State Park:** Located in the beautiful Sierra Nevada, Donner Memorial State Park offers the summer vacationer

opportunities for camping, picnicking, boating, fishing, water-skiing and hiking. In winter, visitors can cross country ski and snowshoe on trails and enjoy the season's beauty. The park encompasses Scallenberger Ridge to the south of Donner Lake. In and around the park you can see some of the Sierra Nevada's geologic history. Visitors are welcome year round at the Emigrant Trail Museum and the Pioneer Monument, built to commemorate those who immigrated to California from the east in the mid-1800s. 12593 Donner Pass Rd., Truckee. 530-582-7892. Reservations: (800) 444-7275. parks.ca.gov/?page_id=503

- **Empire Mine State Historic Park:** The site of one of the oldest, largest, deepest, longest and richest gold mines in California. The park contains many of the mine's buildings, the Bourn Cottage and gardens, as well as the entrance to 367 miles of abandoned and flooded mine shafts. Located in Grass Valley on East Empire Street, it consists of 805 acres of shaded forest — including eight miles of trails for hiking, mountain biking and horseback riding. Guided tours and audio-visual presentations are offered throughout the day at various times. Contact the park for a schedule of living history programs, special events and hours. 10791 Empire St., Grass Valley. 530-273-8522. empiremine.org
- **Malakoff Diggins State Historic Park:** Site of California's largest "hydraulic" mine where the foothills were carved away by mighty streams of water — a gold mining technique that washed away entire mountains to find the precious metal. Legal battles between mine owners and downstream farmers eventually ended this method. The park also contains a 7,847-foot bedrock tunnel that served as a drain. The visitor center has exhibits on life in the old mining town of North Bloomfield. The park offers a variety of hiking and mountain biking trails, and a small mountain lake for swimming and fishing. Call for information and operating hours. 23579 North Bloomfield Rd., Nevada City, 530-265-2740. malakoffdigginsstatepark.org
- **South Yuba River State Park:** A 20-mile portion of the south fork of the Yuba River that extends from Malakoff Diggins State Park to Bridgeport, which includes the longest single-span covered bridge of its type in the world, four miles of steep, rugged canyon, and the Independence Trail, a wheelchair accessible trail. Visitors can enjoy swimming, hiking, wildflowers and historic sites. Docent-led history, nature and gold-panning tours are offered at selected times throughout the year. The park, north of Nevada City, is located off Highway 49 and is accessible at Edwards Crossing, Purdon Crossing, Highway 49 and Bridgeport. 17660 Pleasant Valley Rd., Penn Valley. 530-432-2546 or 530-273-3884. southyubariverstatepark.org

LAKES & RESERVOIRS

- **Bullards Bar Reservoir:** Located northwest of Nevada City in Plumas National Forest, this reservoir is surrounded by rugged countryside. Bullards Bar offers 4,700 surface acres and over 56 miles of shoreline at an elevation of 2,000 feet. There are 39-boat accessible, shaded campgrounds with a full-service marina offering fishing, houseboat rentals and moorings. 530-692-3200.
- **Englebright Lake:** Nestled in the scenic Sierra foothills west of Grass Valley and Nevada City. Constructed for the storage of hydraulic gold mining debris, Englebright Dam is a concrete arch structure that spans 1,142 feet across and is 260 feet high, holding back an 11-mile long lake with many secluded coves. The lake is unique in that it offers boat-in camping only, on a first-come-first-serve basis for \$20 from May 1 to Sept. 30. Group picnics are welcome for a fee, reservations required. Boat launching is \$4 per day, an annual pass is \$30.

530-432-6427. Skippers Cove Marina has houseboat, boat rentals and docking. 530-432-6302.

- **Fuller Lake:** Day-use area. Three miles north of Hwy 20 on Bowman Road. Nine picnic sites, vault toilets, limited parking. 530-823-0562
- **Rollins Lake:** Located between Grass Valley and Colfax, Rollins sits at an elevation of 2,100 feet. It has a surface area of 900 acres with 26 miles of shoreline. A great lake for camping, boating, fishing, sailing and water-skiing.
- **Scotts Flat Lake:** East of Nevada City off Highway 20, Scotts Flat sits at 3,100 feet. The lake has 850 acres of surface with seven-plus miles of pine studded shoreline. A nice boating lake with two launch ramps and marina.
- **Lake Spaulding:** A beautiful alpine lake at an elevation of 5,014 feet. It sits in a glacier carved bowl surrounded by giant rocks and a thick pine forest. It offers 25 campsites, five picnic sites, picnic area, fishing, swimming, boating and boat ramp. Contact the PG&E Regional Land Development office at 916-386-5164.



HIKING TRAILS: Empire Mine State Park

• Hardrock Trail

Trailhead: Empire Mine Visitor Center. Where to park: Main Parking Lot. Directions: Exit Hwy. 49 at Empire Street, drive east one mile to park. Distance of hike: 2-mile loop. Degree of difficulty: 2. Seasons: All year. Historical significance: Passes many historic mining sites. Visitors entering through the visitor center must pay admission. Free entry is allowed by parking at the Pennsylvania Gate equestrian staging area. This trail is the only one in the park for hikers only; no mountain bikers or equestrians are allowed. Dogs must be leashed. Open daily sunrise to sunset. Trail maps are available at park visitor center.

• Osborne Hill Trail

Trailhead: Empire Mine Visitor Center or Pennsylvania Gate. Where to park: Main Parking Lot. Directions: Exit Highway 49 at Empire Street, drive east one mile to park. Distance of hike: Approx 5 miles. Degree of difficulty: Up to 6. Seasons: All year. Historical Significance: Area is dotted with old mine sites and foundations. Beautiful forest setting, small creek crossing. Trail maps are available at the park visitors center.

• Union Hill Trail

Trailhead: Highway 174 at Empire Street. Where to park: Main Parking Lot. Directions: Exit Hwy. 49 at Empire Street, drive east one mile to park. Distance of hike: Approx. 4 miles of trail on Union Hill. Degree of difficulty: Up to 4. Seasons: All year. Historical significance: Area is

filled with old mine sites and includes the pipeline that brought water to the mines. Detailed trail maps are available at the park visitors center.

HIKING TRAILS: South Yuba State Park

• Bridgeport Buttermilk Trail

Trailhead: Off Pleasant Valley Road, upstream of Bridgeport, north side of river. Directions: From Grass Valley, west on Highway 20 to Penn Valley, right (north) on Pleasant Valley Rd. 8 miles to Bridgeport. Distance of hike: 1.25 miles each way. Degree of difficulty: Fairly flat except for one 50-yard upslope. A favorite wildflower hike in March-May. Offers nice views of the river canyon, access to many swimming holes. Literature available at the ranger station.

• South Yuba River Independence Trail

Trailhead: Highway 49, six miles northwest of Nevada City. Distance of hike: 2.5 miles each way. Degree of difficulty: Both 2.5 miles sections are rated 1. West Loop: 5. Wheelchair Access: 1/5 miles in each direction of trailhead. Historical significance: Trail follows alignment of the Excelsior Canal, built during the Gold Rush, with Gold Rush era flumes. Flume and canal systems built to carry water now carry people. Wildflower walks in spring.

nevada county
FAIRGROUNDS & RV PARKS

This is an RV park in a campground setting. Facilities are nestled among tall pine trees, providing a serene setting and encouraging a safe camping experience. The RV Park has 44 sites with full hook-ups, approximately 100 sites with water and power hook-ups, and numerous dry camping sites throughout the grounds. Showers and a convenient dump station are located within the RV Park. To reserve space or to ask questions, email: camping@NevadaCountyFair.com, or call the Fairgrounds office at 530-273-6217. Pets must be on a leash or penned at all times and must be picked up after. Dogs and other pets must not be a threat or a nuisance to other park users at any time. While pets are allowed in the RV Park year-round, please remember that they are not allowed on the adjacent Fairgrounds during special events.



- **South Yuba River Trail**

Trailhead: 8 miles northeast of Nevada City, off North Bloomfield Road. Directions: Highway 49 to North Bloomfield Road. Drive 8 miles, past the river, follow signs to the campground and trailhead. Distance of hike: 7.5 miles one way. Degree of difficulty: 7. Trail passes through Gold Rush remains. Trail can also be accessed from Purdon Crossing. Hiking, horseback riding, picnic sites, primitive and maintained camping, plus swimming, fishing, nature study.

HIKING TRAILS: Malakoff Diggins State Park

- **Blair Trail**

Trailhead: North Bloomfield Road near North Bloomfield. Distance of hike: 1/2 mile loop. Degree of difficulty: 2. Seasons: Year-round. Some snow in winter. The Blair Lake dates to the mining era. Spur goes to campground, 3/4 mile. Pine and cedar forests. No dogs, bicycles or horses.

- **Diggins Loop Trail**

Trailhead: Diggins overlook, North Bloomfield Road. Parking available. Distance of hike: Three-mile loop. Degree of difficulty: 3. Trail loops through what was once the largest hydraulic mining operation in the world.

- **Humbug Creek Trail**

Trailhead: North Bloomfield Road in the state park. Distance of hike: 3 miles each way. Degree of difficulty: 6. Includes a 1,000-foot return climb out of the river canyon. Historical Significance: Malakoff was once the largest hydraulic mine in the world and its almost 8,000-foot North Bloomfield drain tunnel emptied into Humbug Creek, carrying mine tailings into the South Yuba River. Trail connects with the South Yuba Trail at the river. Waterfalls, swimming in the Yuba. Historic relics include ditches, mine shafts, rock walls. No pets, no mountain bikes.

- **North Bloomfield Trail**

Trailhead: North Bloomfield Road, village of North Bloomfield. Distance of hike: 1/2 mile. Degree of difficulty: 6. Seasons: Year-round. Some snow in winter. Pine and cedar forests.

- **Rim Trail**

Trailhead: North Bloomfield Road or Malakoff Campground. Directions: From Nevada City, Highway 49 north to Tyler-Foote Crossing Road, then right (east) to Malakoff Diggins. Distance of hike: 3 miles. Degree of difficulty: 6. Views of the Malakoff hydraulic diggings. Pine and cedar forests. Pets must be leashed.

HIKING TRAILS: Spenceville Wildlife Area

- **Fairy Falls Trail:** Hiking, biking, equestrian. The Old Spenceville Road Trail takes a sharp right at a locked gate, a few hundred yards east of the North Valley Trail. After turning to the right, continue along the old road and through the small wooden gate, up the hill until you arrive at the cattle guard. From this spot you will have wonderful view of an open, broad, pastoral valley, ringed with oaks and covered with wildflowers in spring and a variety of grasses in the summer. The old road heads straight ahead and then to the right, where you will see two trails, the Upper and Lower Loop Trails heading up the hill. If you continue straight along the old road, you will be on the Fairy Falls Trail. This trail follows Dry Creek. You may see the bedrock grinding holes in the flat rocks that line the creek, left by the Nisenan when they ground acorns at the stream's edge. As the old road turns to trail and begins to climb the hill, you will know that you are near the falls.

- **Old Spenceville Road Trail:** Hiking, biking, equestrian. Trail begins at the cement bridge in front of the reclaimed copper mine and runs west and east along Dry Creek. Cross the gated cement bridge and head east (to the right at the mine) along the level dirt road for about a mile until you link up with North Valley Trail and the Falls trails. You will pass rich bird habitat along the road and wildflowers in the spring.
- **Upper Loop Trail:** Hikers only. Take the left trail that climbs the hill from the Fairy Falls Trail. You will wind your way through oaks and past hillsides of lilies in the spring. This trail offers the best long distance views of the Spenceville area. On a clear day, you can see the Sutter Buttes. This trail links up with the Fairy Falls Trail right near the falls.

TAHOE NATIONAL FOREST

The Tahoe National Forest encompasses 177,000 acres of Nevada County, from Nevada City east to the state line. The forest provides some of the best outdoor recreation in the nation and includes more than 600 miles of hiking, biking, equestrian and OHV trails. It also has more than 100 camping and picnic grounds, and many resorts, private camps and ski areas. Hundreds of lakes and miles of streams are the source of drinking water for the county and provides extensive fishing, kayaking and canoeing.

For more information, contact the Nevada City Ranger District at 530-265-4531 or www.fs.fed.us/r5/tahoe.

HIKING TRAILS: Tahoe National Forest

- **Canyon Creek Trail:** Trailheads: North trailhead off Bowman Lake Road at Windy Point, South trailhead at the Arctic Mine, 6.3 miles from Washington. Directions: From Nevada City, Highway 20 east to Bowman Lake Road, approximately .22 miles, then 11.9 miles north to the unmarked trailhead, or east on Highway 20 to Washington Road, approx. 13.3 miles, then 5.2 miles to Washington, then 6.3 miles to trailhead. Distance of hike: 8 miles one way. Degree of difficulty: 1. Creekside hike through rugged primitive terrain.
- **Grouse Lakes Area:** Trailhead: Grouse Ridge Lookout. Directions: From Nevada City, Highway 20 east, left on Bowman Lake Road. Proceed north six miles. Right on Grouse Ridge Road. Campground is 5.3 miles up a bumpy dirt road. Distance of hike: Two to eight miles. Degree of difficulty: 3-10. Some trails date to the mining days. High alpine environment, expansive views, lakes, fishing, swimming, wildflowers. From the Grouse Ridge Lookout Campground you can also hike north to the Glacier Lake Trail and experience high Sierra meadows, forests and glacial moraine. The lake is nestled in the shadows of the Black Buttes. Distance of hike: 4 miles from Grouse Ridge Lookout. Degree of difficulty: 5.
- **Missouri Bar Trail:** Trailhead: Off Highway 20, across from The Old 5 Mile House, Nevada City. Directions: Highway 20 East from Nevada City. Left at Harmony Ridge Market. Distance: 20 miles. Degree of difficulty: 3.
- **Missouri Bar Trail:** Trailhead: Located off Forest Road No. 729-3. Directions: From Nevada City, Highway 49 north to Tyler-Foote Crossing Road, then right (east) to Malakoff Diggins and Relief Hill Road. Follow signs. Distance of hike: 1.6 miles one way. Degree of difficulty: 6. Planned trail extension will provide connection to the South Yuba River Trail.
- **Pioneer Trail:** Trailhead: Off Highway 20, across from The Old 5 Mile House, Nevada City. Directions: Highway 20 east from Nevada City, left

at Harmony Ridge Market, across from The Old 5 Mile House. Distance of hike/bike ride: 20 total miles. Degree of difficulty: 3.

- **Rock Creek Nature Trail:** Trailhead: Off access road, seven miles east of Nevada City. Directions: Highway 20 east from Nevada City, left on Washington Ridge Conservation Camp Road. Follow signs to access road, park at trail head. Distance of hike: 0.8 mile loop. Degree of difficulty: 1. Wheelchair Access: First 500 feet of trail. This interpretive trail has been used for many years in school nature study programs. Native plants and trees are identified. Brochures are available at the trailhead. Horses prohibited.
- **Scott's Flat Lake Trail:** Trailhead: Off Hwy 20 at The Old 5 Mile House, Nevada City. Directions: Highway 20 east from Nevada City, on right past The Old 5 mile House. Distance of hike/bike trail: Approximately 5 miles one way.

WALKING TOURS: SELF-GUIDED

Grass Valley combines the rich heritage of yesterday and the best of today, offering visitors and history buffs an interesting glimpse into the past. This historic tour begins at the Lola Montez House, today's home to Helping Hands Nurturing Center.

Nevada City is among the most interesting of California Gold Rush towns. For a journey into California's golden history, Nevada City ranks with Northern California's best. First time visitors are attracted by the old mining town appearance. The entire downtown area is listed on the National Register of Historic Places. The historic district includes a total

Discover EXTRAORDINARY CLASSICAL MUSIC



2022-2023 THIRD SUNDAY SEASON



Experience world-renowned musicians, emerging award-winning young artists, and top-tier local performers.

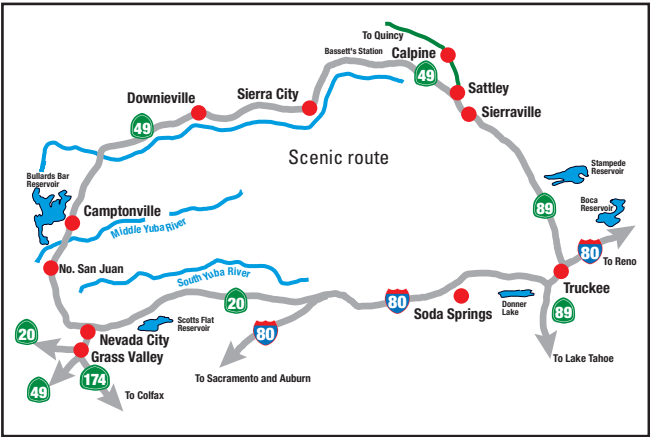


Nevada County, CA • 530-273-3990 • InConcertSierra.org

of 93 buildings. Eight individual buildings are also listed on the register and Nevada City contains another 18 state and local landmarks.

Hirschman’s Trail: Only a mile from the heart of downtown Nevada City, here is a great new trail system that gets you quickly out into nature with lots of different things to enjoy. The centerpiece is lovely Hirschman’s Pond, named after the Hirschman brothers who were pioneer miners and merchants of the area. The eastern 0.4 mile of trail is constructed to ADA standards, providing barrier-free access to Hirschman’s Pond. Highlighting this section of trail is a 40-foot long trestle that was built to replicate the railroad and flume construction techniques of the late 1800’s. West of the pond, the trail narrows and meanders through oak woodlands, pines, and grasslands for an additional 2 miles.

Tribute Trail: What better way to explore Deer Creek’s rich history and scenic beauty than to follow the Deer Creek Tribute Trail? This multi-use trail is a cultural and ecological path through Nevada City, California. The trail begins in historic downtown Nevada City and moves along scenic backroads and trails. The Tribute Trail is available for picnics, bicycling, hiking, swimming, fishing, and horseback riding. Walk a portion of the trail and then enjoy downtown Nevada City, or challenge yourself to complete the full 8.6 mile trail.



DRIVING TOUR: SELF-GUIDED

Yuba Donner Scenic Byway: From Grass Valley/Nevada City, take Routes 20, 49, 89 and 80. The 160 mile loop of highways showcases some of the best scenery America has to offer. Among things to do and see along the byway are hiking, skiing, swimming, fishing, camping, picnicking, gold panning, picture taking, sightseeing (there are many museums that tell of the rich gold mining and Emigrant Trail history of the area), rock climbing, boating, golfing, river rafting, dining, shopping and just plain ol’ relaxing. The route includes the historic towns of Nevada City, Truckee, Sierraville and Downieville. Attractions along the way include historic sites and geological diversity. Driving time: 4 hours.

FOUR SEASONS

SUMMER

Nevada County boasts hot summer days, perfect for a dip in one of the many quality swimming holes along the South Yuba River. If you're more of a water sports enthusiast, there are plenty of lakes to play in whether your joy is kayaking, jet skiing, fishing, or just lying on the sand and soaking up the sun. Summer days are a joy; but oh, those summer nights! Any day of the week there are countless opportunities for entertainment. You can catch a play at one of our three theaters, go to a concert at Center for the Arts or Miners Foundry, or just wander through downtown Nevada City and enjoy whichever live music act catches your fancy. Not to mention the many fairs, festivals, and farmers markets that occur weekly.

AUTUMN

Autumn in Nevada County is a spectacular sight to behold. With foliage that rivals that of New England; everywhere you turn is a new visual delight. The mild days and cool nights make exploring the towns a pleasure, and for a fun family treat, check out Bierwagen's Pumpkin Patch and Harvest Festival which goes on every day in October. If art is your thing, try the Open Studios Art Tour & Sale, or step back in time at the KVMR Celtic Festival. To get into the Halloween spirit, take the Haunted Nevada City historical walking tour, or get a head start on your Christmas shopping at the Thanksgiving Weekend Art Faires.

WINTER

Winter in Nevada County is typically sunny and cold and Grass Valley sits just low enough to get the lovely snow-capped mountain views without the inconvenience of shoveling. Nevada City, however, does get a small accumulation of snow occasionally and turns the darling town even more picturesque.

It is only a 45 minute drive to Donner Summit, and another 15-30 minutes will take you to the Truckee-Lake Tahoe area with cross country skiing areas, many ski and snowboarding resorts, tubing and sledding areas, and great snowshoeing locations. If you prefer motorized sports, there are places to rent snowmobiles to explore the winter wonderland.

Each year, Downtown Grass Valley hosts Cornish Christmas, Nevada City puts on Victorian Christmas, and South Nevada County has its own Christmas in the Pines. In 2015, Penn Valley began a new holiday tradition that features light displays in Western Gateway Park. Stroll through the streets with old fashioned carolers in Victorian garb, get some chestnuts right off the fire, and peruse the many items available for sale from our local artisans.

SPRING

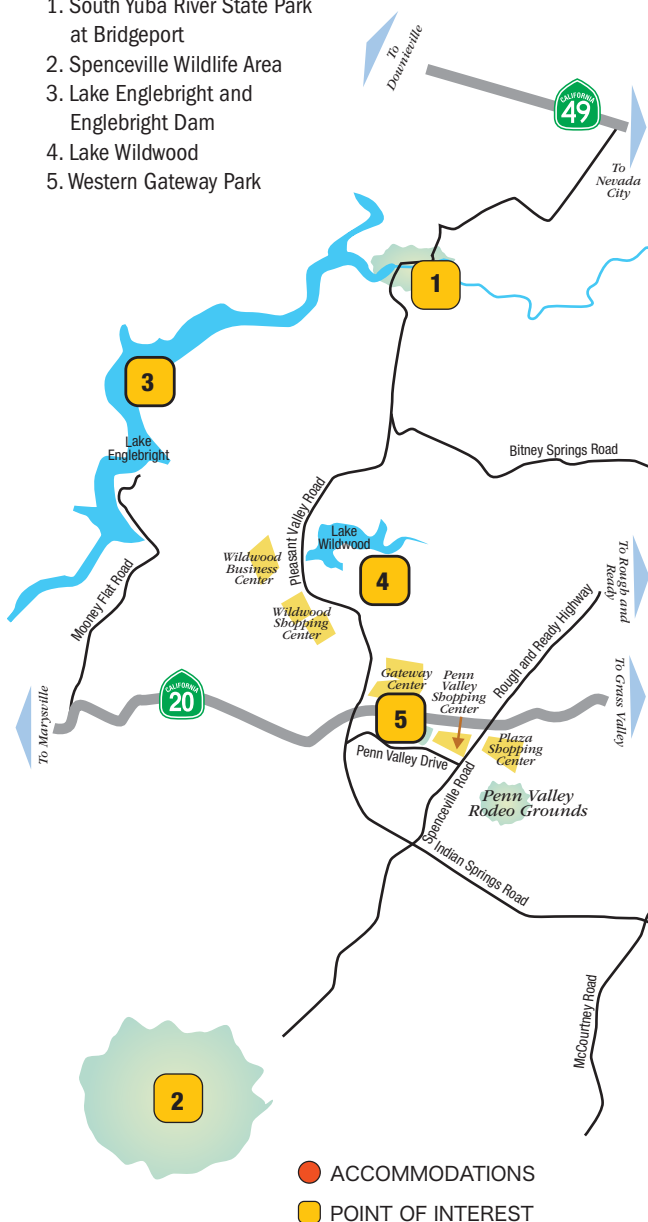
Spring is a riot of color in Nevada County, with many varieties of wildflowers and trees blooming throughout the season, and the redbud, dogwood, and fruit trees flowering everywhere you look. With mild 70-degree days, it's the perfect season to visit Bridgeport at South Yuba State Park; the longest single-span wooden covered bridge still in existence in the US. While you're there, hike the easy Buttermilk Bend Trail for a stunning view of the wildflowers, butterflies, and South Yuba River. If nature's not your thing, stay in town for the Foothills Celebration, an annual wine and art event, or St. Piran's Day Celebration which celebrates Grass Valley's Cornish heritage.

PENN VALLEY

accommodations & points of interest

POINTS OF INTEREST

1. South Yuba River State Park at Bridgeport
2. Spenceville Wildlife Area
3. Lake Englebright and Englebright Dam
4. Lake Wildwood
5. Western Gateway Park



SOUTH COUNTY

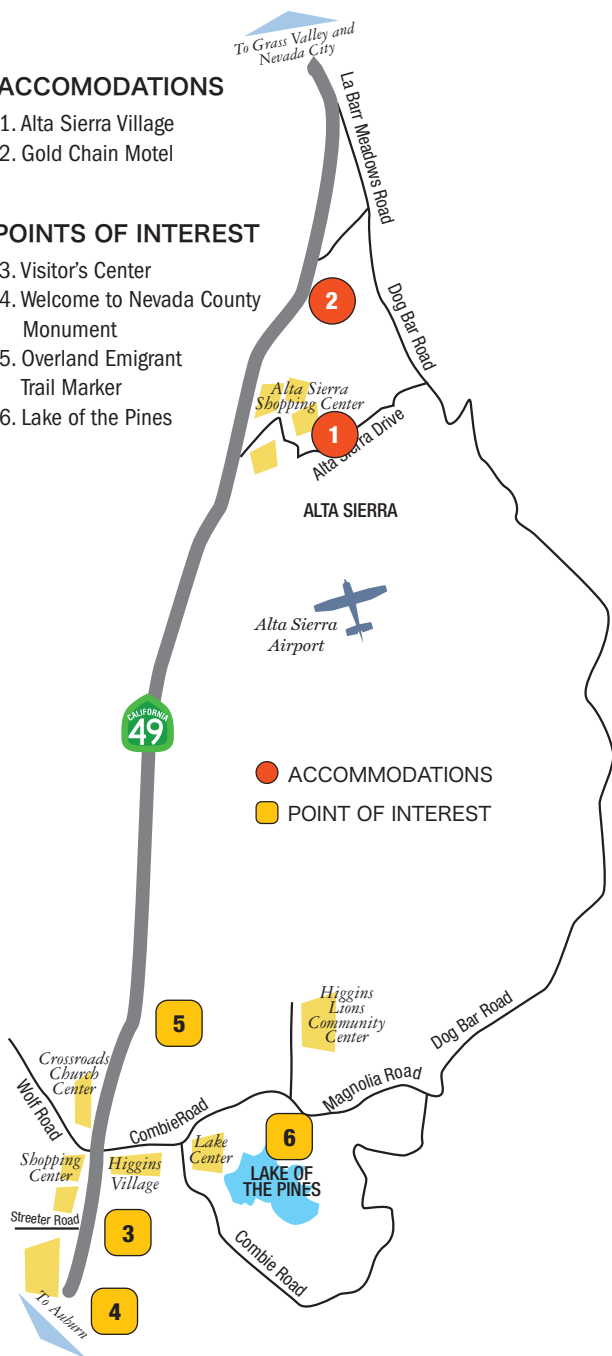
accommodations & points of interest

ACCOMMODATIONS

1. Alta Sierra Village
2. Gold Chain Motel

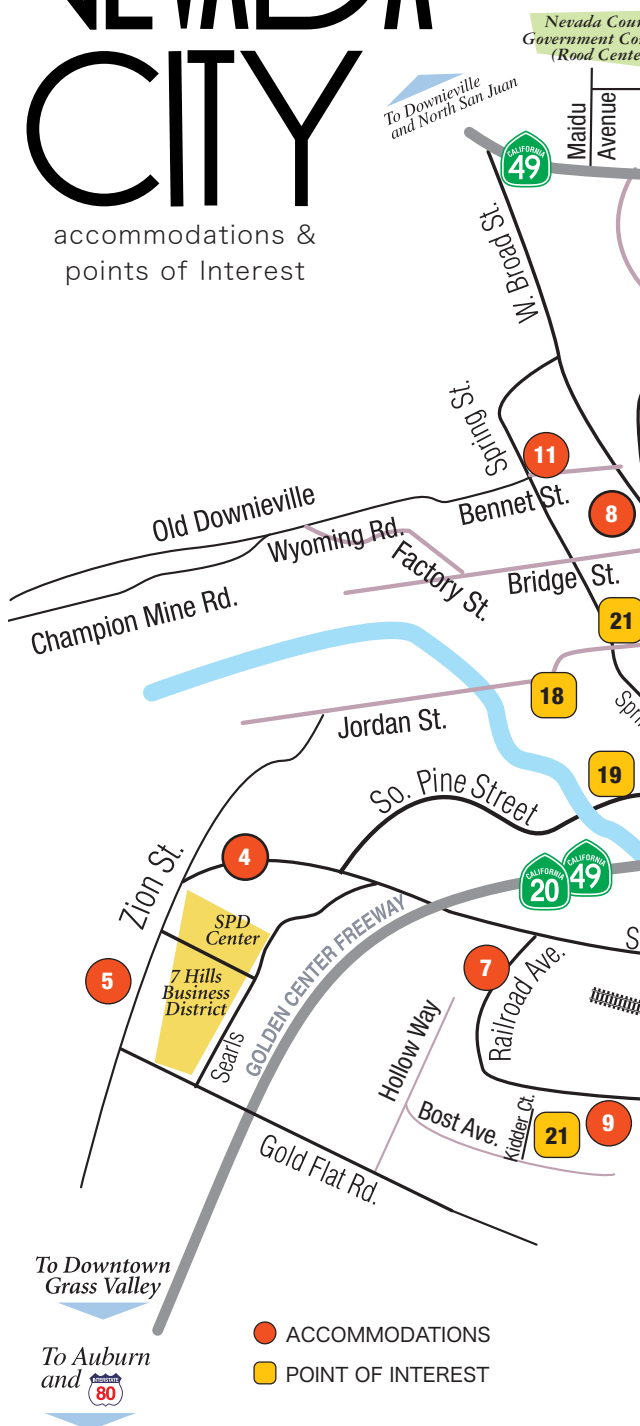
POINTS OF INTEREST

3. Visitor's Center
4. Welcome to Nevada County Monument
5. Overland Emigrant Trail Marker
6. Lake of the Pines



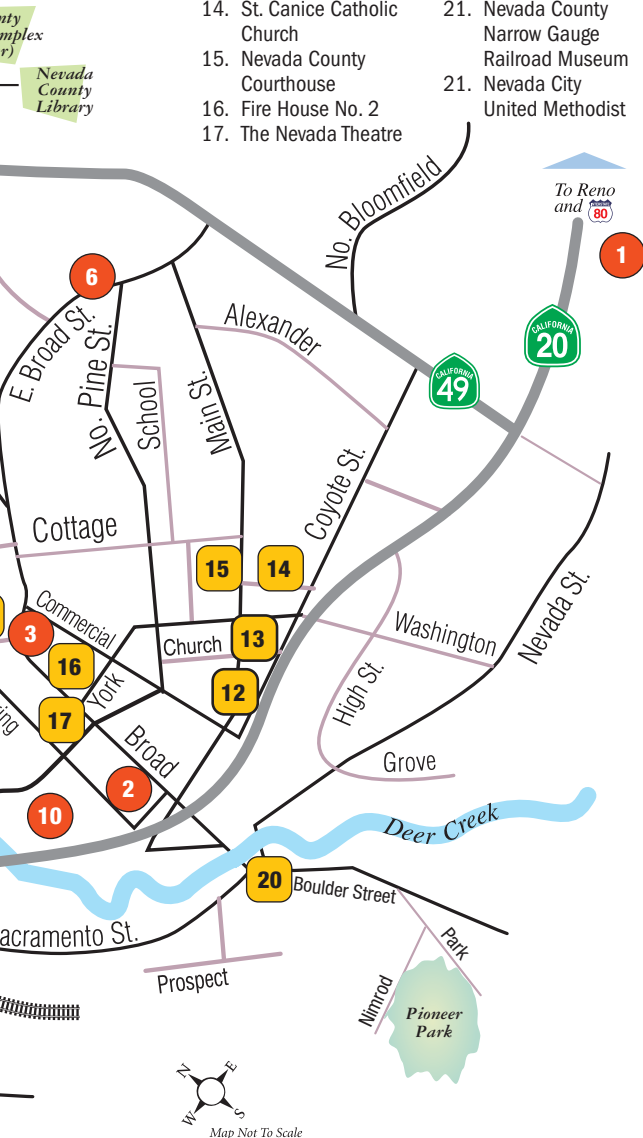
NEVADA CITY

accommodations &
points of Interest



POINTS OF INTEREST

- | | |
|---|--|
| 12. Nevada City Chamber of Commerce/ Visitor's Center | 18. Miners Foundry Cultural Center |
| 13. Fire House No. 1 | 19. Nevada City Winery |
| 14. St. Canice Catholic Church | 20. The Stonehouse |
| 15. Nevada County Courthouse | 21. Nevada County Narrow Gauge Railroad Museum |
| 16. Fire House No. 2 | 21. Nevada City United Methodist |
| 17. The Nevada Theatre | |

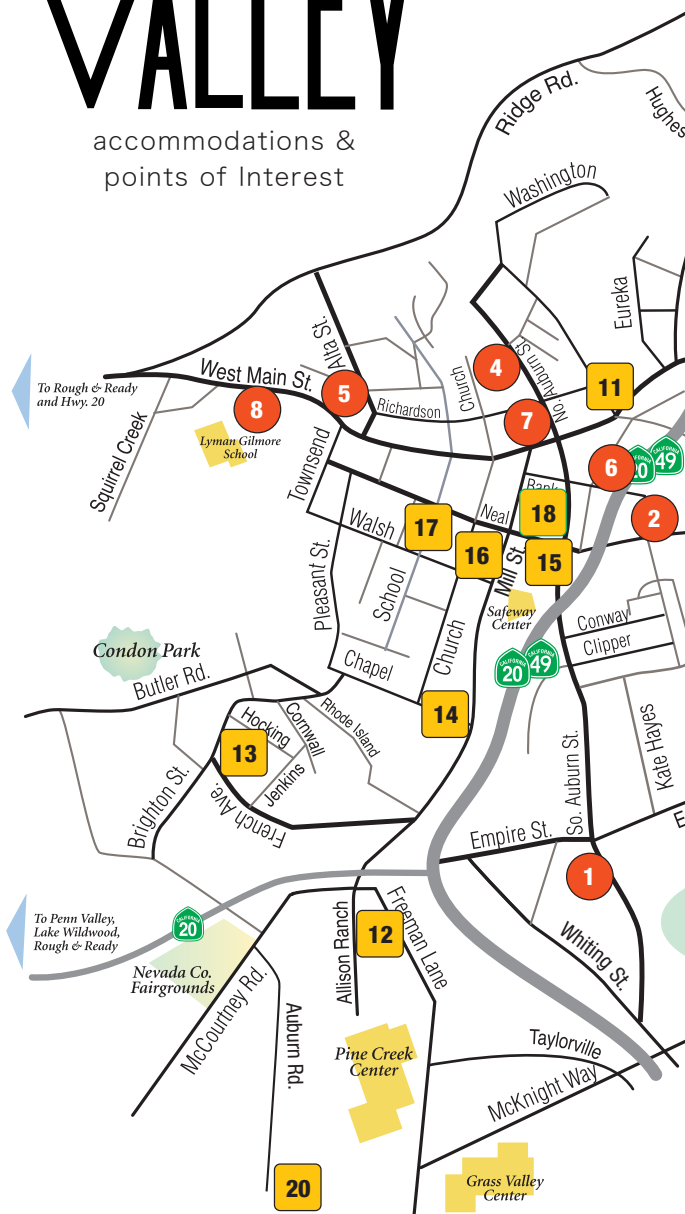


ACCOMMODATIONS

- | | |
|----------------------------|------------------------|
| 1. Harmony Ridge Lodge | 6. The Outside Inn |
| 2. National Exchange Hotel | 7. Northern Queen Inn |
| 3. The Madison House | 8. Broad Street Inn |
| 4. Piety Hill Cottages | 9. Inn Town Campground |
| 5. Nevada City Inn | 10. Gold Creek Inn |
| | 11. Goldtown Hideaway |

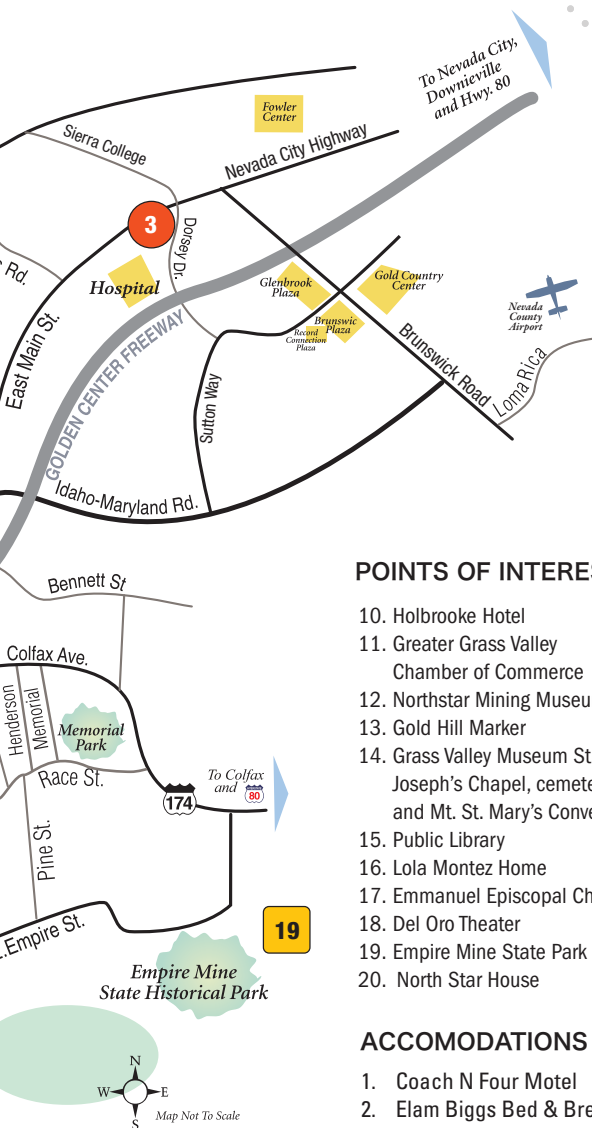
GRASS VALLEY

accommodations &
points of Interest



● ACCOMMODATIONS

■ POINT OF INTEREST



POINTS OF INTEREST

10. Holbrooke Hotel
11. Greater Grass Valley Chamber of Commerce
12. Northstar Mining Museum
13. Gold Hill Marker
14. Grass Valley Museum St. Joseph's Chapel, cemetery and Mt. St. Mary's Convent
15. Public Library
16. Lola Montez Home
17. Emmanuel Episcopal Church
18. Del Oro Theater
19. Empire Mine State Park
20. North Star House

ACCOMODATIONS

1. Coach N Four Motel
2. Elam Biggs Bed & Breakfast
3. Holiday Lodge
4. Grass Valley Courtyard Suites
5. Sierra Mountain Inn
6. Gold Miners Inn
7. Holbrooke Hotel
8. The Pines Motel and Cottages



■ SIGNATURE ANNUAL EVENTS

JANUARY

Grass Valley Wedding Fair:

Everything you need to have the perfect Nevada County wedding

• Nevada County Fairgrounds •
joyoflifeevents.com

FEBRUARY

Wild and Scenic Film Festival:

Environmental films celebrate the natural and wild world put on by nonprofit SYRCL • Various locations •
wildandscenicfilmfestival.org

Nevada City Mardi Gras: Parade and street faire in downtown Nevada City • nevadacitychamber.org

MARCH

Guided Wild Flower Walks:

Mid-March – Mid-May, Saturday & Sunday. Spectacular displays!

• Bridgeport N. Parking Lot, 17660 Pleasant Valley Rd., PV • south-yubariverstatepark.org

3rd Saturday in March -

Foothills Celebration:

Downtown Grass Valley's Unique Tasting Experience. Stroll, Sip,

Sample, and Shop. Enjoying a taste of local wine, beer and cuisine while in downtown shopping venues.
downtowngrassvalley.com

APRIL

EarthFest: Celebrating Earth Day.

An Event filled with activities and booth representing local environmental groups • Downtown Nevada City •
nevadacitychamber.com

Home, Garden & Lifestyle

Show: The Union's annual event with everything you need to make your home beautiful inside and out, plus live music, kids activities, workshops, and more • Nevada County Fairgrounds • homegarden.theunion.com

MAY

Annual Downtown Grass Valley

Car Show: Vintage & classic cars, entertainment, awards & refreshments. • downtowngrassvalley.com

Armed Forces Day: Military service dog presentations, technology presentations, vehicles on display,



For over 160 years, the Miners Foundry Cultural Center has been the place in Nevada County to create, gather and celebrate. We look forward to singing, dancing, sharing, and connecting with you in Nevada County's largest historic community cultural center. Thank you for your continued support!



MINERSFOUNDRY.ORG
325 SPRING STREET
NEVADA CITY • CA
530.265.5040



and multiple flyovers of the city along with food, festivities, and celebration of our Armed Forces • Downtown Grass Valley • nevadacountyca.gov

Penn Valley Rodeo & Parade: Weekend-long event featuring all of your rodeo favorites • pvrodeo.com

Strawberry Music Festival: Bluegrass, blues, folk, swing, rock, Cajun, Celtic and gospel music with camping available • Nevada County Fairgrounds • strawberrymusic.com

JUNE

Celebration of Trails: Bear Yuba Land Trust's annual event featuring adventures hosted by local hiking clubs and outdoor recreation partners, explore local trails through a series of hikes, runs, equestrian and bike rides and rolls • bylt.org

Thursday Night Marketplace & Free Concert: Food, produce, vendors and music in historic Downtown Grass Valley • downtown-grassvalley.com

JULY

4th of July Parade: Historic Downtown Nevada City: nevadacitychamber.com
Evening Festivities: Downtown Grass Valley: grassvalleychamber.com

California Worldfest: Music, dance, camping, workshops, International food, kids' programs • Nevada County Fairgrounds • worldfest.net

Summer Nights in Nevada City: Three Wednesday evenings. Craft fair, food and entertainment, Historic Downtown NC • nevadacitychamber.com

The Children's Festival: Children's Renaissance Fair. Pioneer Park, Nevada City • thechildrensfestival.com

Annual Sierra Storytelling Festival: Storytellers. North Columbia Cultural Center, Nevada City • sierrastorytellingfestival.org

AUGUST

Nevada County Fair: Rodeo, motor sports, live music, livestock, and thousands of exhibits. Nevada County Fairgrounds • nevadacountyfair.com

Annual Nevada City Film

Festival: World-class independent films by Int'l filmmakers. Various locations • nevadacityfilmfestival.com

SEPTEMBER

Constitution Day Celebration & Parade: Constitution Day Parade and Revolutionary War reenactment. Downtown Nevada City/Pioneer Park • nevadacitychamber.com

Draft Horse Classic and Harvest Fair: Draft Horse performances and competitions • Nevada County Fairgrounds • nevadacountyfair.com

KVMR Annual Celtic Festival

& Marketplace: Music, dance, workshops, market, kid's area • Nevada County Fairgrounds • kvmrcelticfestival.org

OCTOBER

Bierwagen's Pumpkin Patch & Harvest Festival: Food, produce, farm animals, and children's play area • bierwagensfarm.com

Fall Colors Open Studios & Art Tour: Meet artists, see their studios, buy art. • thecenterforthearts.org

NOVEMBER

Banner Mountain Artisans Annual Holiday Sale: Arts and crafts for sale by local artisans • NC Elks Lodge • bannermountainartisans.com

Country Christmas Fair: Carolers, Santa, gingerbread house competition, gifts from artisans and more • Nevada County Fairgrounds • nevadacountyfair.com

DECEMBER

Cornish Christmas: Delicious foods, arts & crafts, carolers, live music • Historic Downtown GV • downtowngrassvalley.com

Victorian Christmas: Historic Downtown NC becomes a timeless Christmas card. • nevadacitychamber.com

Holidays at the Empire Mine:

A glimpse of Christmas past at Empire Mine Historic State Park • empiremine.org

■ MOVIE THEATRES

DEL ORO
165 Mill St., Grass Valley
530-273-6932

SUTTON CINEMAS
399 Sutton Way, Grass Valley
530-477-9000

THE ONYX
107 Argall Way, Nevada City
530-265-8262

NEVADA THEATRE SERIES
401 Broad St., Nevada City
530-477-FILM (3456)

■ FAMILY FUN

49ER FAMILY FUN PARK
314 Railroad Ave., Grass Valley
530-272-4949 • 49erfunpark.com
Amusement parks, party and event
planning, mini golf

**PROSPERITY LANES
BOWLING ALLEY**
420 Henderson St., Grass Valley
530-274-6484
prosperitylanes.com

■ ART GALLERIES

AS IF STUDIOS
940 Idaho Maryland Rd.,
Grass Valley
530-274-7000 • asifstudios.com

ART WORKS GALLERY
113 Mill St., Grass Valley
530-477-1600
artworksgalleryco-op.com

**CLAVEY WINE
TASTING ROOM**
232 Commercial St., Nevada City
530-265-8200 • claveywine.com

ELIXART
408 Broad St., #8, Nevada City
530-265-1901 • elixart.net

GOLDEN LOTUS
421 Broad St., Nevada City
604-999-2800 • goldenlotusart
gallery.com

SZABO VINEYARDS
Tasting Room
316 Broad St., Nevada City
530-265-8792 • szabovineyards.com

THE CENTER FOR THE ARTS
The Main Gallery and
the Granucci Gallery
314 West Main St., Grass Valley
530-274-8384 • thecenterforthe
arts.org

THE CHAMBERS PROJECT
627 E. Main St., Grass Valley
(530) 470-3297
• thechambersproject.com

LEE ANN BROOK FINE ART
Home studio, open by appointment
530-265-6817 • leeannbrookfine
art.com

**THE LOUVRE FRAMING,
RESTORATION, AND
GALLERY**
124 E. Main. St., Grass Valley
530-272-3733

**UBA SEO: NISENAN ARTS
AND CULTURE**
225 Broad St, Nevada City
nisenan.org

■ PERFORMING ARTS & THEATRES

The amphitheaters and historic halls of Nevada County provide the stage for a number of excellent performing arts companies.

CATS: THE COMMUNITY ASIAN THEATRE OF THE SIERRA

A diverse group of performers offering quality theater with an Asian emphasis.
228 Commercial St., #88, Nevada City.
530-273-6362 or catsweb.org

THE CENTER FOR THE ARTS

Showcases the visual, literary and performing arts with a newly remodeled, state of the art theater, gallery and studio spaces. There is an ongoing schedule of concerts, plays, dances, exhibitions, workshops and classes. 314 West Main St., Grass Valley. 530-274-8384 or thecenterforthearts.org

INCONCERT SIERRA

Presenting great music in Nevada County since 1946. Solo and small ensemble concerts of classical, jazz and Broadway. 530-273-3990. inconcertsierra.org

LEGACY PRODUCTIONS

Family run and operated theatre company, with emphasis on producing high quality stage plays that are rare or new to Nevada County. Based mostly at the historic Nevada Theatre, LeGacy utilizes the best of local talent

to create an unforgettable theatre experience. 530-913-2826, legacy-presents.com

MUSIC IN THE MOUNTAINS

Classical music is featured in the annual Music in the Mountains SummerFest. Fall and Spring events also take place. musicinthemountains.org
Business office 530-265-6173 • Box office 530-265-6124

MINERS FOUNDRY

This historic building hosts over 400 events annually, including: concerts, dance, literary and theater productions. Located at 325 Spring St., Nevada City. 530-265-5040 or minersfoundry.org

NORTH COLUMBIA SCHOOLHOUSE CULTURAL CENTER

The schoolhouse has been a community cultural center since 1980, hosting visual and literary art, dance, theatre and other cultural events. Located 20 miles north of Nevada City, the schoolhouse, a graceful example of Western Colonial architecture. 17894 Tyler Foote Rd., Nevada City. 530-265-2826, northcolumbiaschoolhouse.org

nevada county

STATE CULTURAL DISTRICTS

PART OF 14 STATE CULTURAL DISTRICTS

Nevada County is the only rural county in California which is home to two State-designated Cultural Districts. They are part of a small pilot group of districts throughout California!

Grass Valley-Nevada City Cultural District and Truckee Cultural District have been selected as two of California's premier state-designated cultural districts under California Arts Council's Cultural District Program. They join twelve other districts that are launching the innovative new program highlighting thriving cultural diversity and unique artistic identities within California, home to the country's leading creative economy.

A cultural district, as outlined by the program, is a well-defined geographic area with a high concentration of cultural resources and activities. The fourteen districts that comprise the program's first group were selected with variety in mind, intended to help tailor the program to meet the complex needs of a state kaleidoscopic in nature.

Source: Nevada County Arts Council



NEVADA COUNTY CONCERT BAND

This community orchestra performs a popular Picnic and Pops concert series each summer at Pioneer Park in Nevada City.
530-272-6228 or nccb.org

NEVADA THEATRE

Built in 1865, it is the oldest original-use theatre in California. Registered National Historic Landmark.
401 Broad St., Nevada City.
530-265-6161, nevadatheatre.com

OFF BROADSTREET THEATRE

This Nevada City company offers musical comedy with top-notch acting and singing in a unique, cabaret style theater complete with drinks and dessert.
305 Commercial St., Nevada City.
530-265-8686 or offbroadstreet.com

PAUL EMERY PRESENTS:

Event and concert production in Nevada City and Grass Valley, including the Nevada City Live Concert Series.
530-478-1974 or 530-205-0972.
paulemerymusic.com

THE PENN VALLEY PAVILION

This pavilion is set amidst the beautiful natural surroundings of Western Gateway Park, 18560 Penn Valley Drive, Penn Valley. 530-432-1990, westerngatewaypark.com

SIERRA MASTER CHORALE

A 70-plus member auditioned choir presenting annual holiday and spring concerts. 530-273-3990. sierra-masterchorale.org

SIERRA STAGES COMMUNITY THEATER

Striving to enrich the cultural life of Nevada County by providing high quality, affordable and accessible performances for everyone. 228 Commercial St., #472, Nevada City. 530-346-3210 or sierrastages.org

ST. JOSEPH'S CULTURAL CENTER

Established in 1866 as an orphanage, school and convent, it now houses the Grass Valley Museum, artists' studios and serves as a center for cultural events. 410 South Church St., Grass Valley. 530-272-4725, saintjosephsculturalcenter.org

THE THEATER COMPANY

A brand new ensemble in Nevada County who will present theatrical productions of various genres to provide opportunities to participate in and enjoy quality live theater. 530-278-8637, thetheatercompany inc.com.

■ DOG FRIENDLY

Nevada County is a great place for dog lovers, and dogs will surely love all the adventures it has to offer.

DAY CARE & BOARDING

EMPIRE KENNELS

11377 Amsel Way, Grass Valley
530-272-6971

THE KENNELS - PET BOARDING/PET SITTING

12736 McCourtney Rd., Grass Valley
530-272-4670 • thekennelsgv.com

THE DOG HOUSE

19248 Leopard Ct., Grass Valley
530-388-8959

GROOMING SERVICE & SUPPLIES

SCRAPS DOG BAKERY

2034 Nevada City Hwy., Grass Valley
530-274-4493 • scrapsdogbakery.net

INCREDIBLE PETS

649 Sutton Way, Grass Valley
530-272-7701 • incredpets.com

PETCO

672 Freeman Ln., Grass Valley
530-274-7547

RIVER DOGS

526 Mill St., Grass Valley
530-272-1645 • riverdogs
grooming.com

FOR PETS ONLY

17406 Penn Valley Dr., Penn Valley
530-432-3520 • petsuppliesand
groomingpennvalley.com

PAW SPA

147 Joerschke Dr. #6, Grass Valley
530-272-5300

PAWS & CLAWS GROOMING

10518 Combie Road, Auburn
530-268-8035

**FURRY FRIENDS
GROOMING SALON**

10110 Alta Sierra Dr., Grass Valley
530-477-8082

**CLASSY CLIPPER MOBILE
DOG GROOMING**

Penn Valley 95946
530-786-3753 • classyclipper
grooming.com

**VETERINARY/EMERGENCY
SERVICES****AT THE FARM VETERINARY
SERVICE, INC**

101W. McKnight Way,
Ste. B # 205, Grass Valley
530-268-5723 • atthefarmvet.com
24 Hour Emergency Service
for small and large animals

FOUR PAWS ANIMAL CLINIC

521-A Searls Ave., Nevada City
530-265-3722 • fourpawsac.com

**GRASS VALLEY VETERINARY
HOSPITAL**

11101 Rough & Ready Hwy.,
Grass Valley
530-273-7272 • gvvet.com

**PINE CREEK VETERINARY
CLINIC**

128 New Mohawk Rd., Nevada City
530-478-9141 • pinecreekvetclinic.com

ANIMAL MEDICAL CENTER

1525 Grass Valley Hwy., Auburn
530-823-5166 • Humane societies/
shelters

ANIMALSAVE

520 E. Main #A, Grass Valley
530-271-7071 • animalsave.org

**SAMMIE'S FRIENDS
ANIMAL SHELTER**

(Nevada County Animal Shelter)
14647 McCourtney Rd., Grass Valley
530-471-5401 • sammiesfriends.org

ANIMAL MEDICAL CENTER

1525 Grass Valley Hwy, Auburn
530-823-5166

**HUMANE SOCIETIES/
SHELTERS****ANIMALSAVE**

520 E. Main #A, Grass Valley
530-271-7071 • animalsave.org

**SAMMIE'S FRIENDS
ANIMAL SHELTER**

(Nevada County Animal Shelter)
14647 McCourtney Rd.,
Grass Valley
530-471-5401 • sammiesfriends.org

SCOOTER'S PALS

518 Brunswick Rd., Grass Valley
530-350-2099 • scooterspals.org

ANIMAL PLACE

17314 McCourtney Rd., Grass Valley
530-477-1757 • animalplace.org

**MOTHER LODGE
VETERINARY HOSPITAL**

11509 La Barr Meadows Rd.,
Grass Valley 95949
530 272-6651 • MotherLodeVet.com

**DOG FRIENDLY
RESTAURANTS****BRIARPATCH MARKET/DELI**

290 Sierra College Dr., Ste A,
Grass Valley
530-272-5333 • briarpatchcoop

DIEGO'S CHILEAN CUISINE

217 Colfax Ave., Grass Valley
530-477-1460 • diegosrestaurant.com

**TOFANELLI'S GOLD
COUNTRY BISTRO**

302 W. Main St., Grass Valley
530-272-1468 • tofanellis.com

BROAD STREET BISTRO

426 Broad St., Nevada City
530-265-4204 • broadstreetbistro.com

BLUE COW DELI

17500 Penn Valley Dr., Ste. A,
Penn Valley
530-432-5500

HOTELS, MOTELS & CAMPGROUND

ALTA SIERRA VILLAGE INN

11858 Tammy Way, Grass Valley
800-992-5300, 530-273-9102
altasierravillageinn.com
Pet fee: \$10 per pet, one time,
non-refundable fee

BEST WESTERN GOLD COUNTRY INN

972 Sutton Way, Grass Valley
866-839-6035, 530-273-1393
bwgrassvalley.com
Pet Fee: \$20 per pet, one time,
non-refundable fee. Can't leave pet
alone in the room.

COACH N FOUR MOTEL

628 S. Auburn St., Grass Valley
530-273-8009 • coachn4.webs.com
Pet fee: \$10 per pet, one-time,
non-refundable fee.

CREEKTOWN COTTAGES

126 Bank St., Grass Valley
530-308-2370, 530-913-2596
• creektowncottages.com
Extra pet fees applies

GOLDEN CHAIN MOTEL

13413 Hwy 49, Grass Valley
530-273-7279
Pet fee: \$10 per pet, one-time,
non-refundable fee.

GOLD MINERS INN

121 Bank St., Grass Valley
530-477-1700 • goldminersinnnv.com
Pet fee: \$60 per pet, one-time
non-refundable fee

GRASS VALLEY COURTYARD SUITES

210 N. Auburn St., Grass Valley
530-272-7696 • gvcourtyardsuites.com
Pets fee under 40 lbs: \$25,
one-time non-refundable fee

HARMONY RIDGE LODGE

18883 E. Hwy. 20, Nevada City
530-478-0615 • harmonyridge
lodge.com
Pet fee: \$25 per pet, one-time,
non-refundable fee

HOLBROOKE HOTEL

212 W. Main St., Grass Valley
530-273-1353 • holbrooke.com
Pet fee: \$50 per pet, one-time
non-refundable fee.

INN TOWN CAMPGROUND

9 Kidder Ct., Nevada City
530-265-9900 • Inntowncamp
ground.com

NORTHERN QUEEN INN

400 Railroad Ave., Nevada City
800-226-3090, 530-265-5824
northernqueeninn.com
Pet fee: \$25, per room,
one-time non-refundable fee

OUTSIDE INN

575 Broad St., Nevada City
530-265-2233 • outsideinn.com
Pet fee: (dogs only) \$20 –
per pet, cleaning fee per night
(non-refundable).

SIERRA MOUNTAIN INN

816 W. Main St., Grass Valley
530-273-8133 • sierramountaininn.com
Pet fee: \$25 per pet, one-time
non-refundable fee.

THE PINES MOTEL AND COTTAGES

The Pines Motel and Cottages
10845 Rough and Ready Hwy,
Grass Valley
530-273-4232 • bringfido.com/
lodging/280974

BOOK TOWN BOOKS

**107 Bank Street
Grass Valley
(530) 272-4655**

booktowngv@gmail.com

**A co-op of
independent booksellers**



**4000 sq. ft. of books
Used and Rare Books
Ephemera
CDs, DVDs, LP Records
Art • Rare Book Section
Mon-Sat: 10am-6pm
Sun: 11am-5pm**

MUSEUMS

DORIS FOLEY LIBRARY FOR HISTORICAL RESEARCH

211 N. Pine St., Nevada City
530-265-4606

This library, built in 1907 and listed on the National Register of Historic Places, is housed in a Romanesque Revival architectural style Carnegie library building. It contains research materials regarding Nevada County history, and is completely volunteer-run.

Open Wednesday-Saturday,
10 a.m.-4 p.m.

EMPIRE MINE STATE PARK

10791 East Empire St., Grass Valley
530-273-8522.

Open daily 10 a.m.-5 p.m. One of the oldest, largest, and most prosperous gold mines in North American History. Daily tours of the cottage, mineyard, grounds, and gardens are included with entrance fee. \$7 for adults 16 and over, \$3 for children 6-16, free for children under 6. Closed Thanksgiving, Christmas, and New Years Day.

FIREHOUSE MUSEUM NO. 1

214 Main St., Nevada City
530-265-5468

Nevada City's first permanent firehouse. Built in 1861, it operated as a firehouse until 1940s. The museum houses relics from the Donner Party and a unique Maidu Indian display. Call for hours. Donation.

MINERS FOUNDRY CULTURAL CENTER

Open Tuesday-Friday, 9 a.m. - 4 p.m.
325 Spring St., Nevada City
530-265-5040

Built in 1856, this enormous structure produced the first Pelton wheels. It contains an impressive hall built entirely of stone.

NEVADA COUNTY NARROW GAUGE RAILROAD MUSEUM

#5 Kidder Court, P.O. Box 2392,
Nevada City
530-470-0902

Call for information. Gift shop.
Free (donations appreciated).
ncngrmuseum.org.

NORTH STAR MINING MUSEUM

Open May 1 through Oct. 31. Located at the end of Mill Street at Allison Ranch Rd., Grass Valley
530-273-4255

At the North Star find displays of mining equipment and artifacts from the 1880s. On display is the largest Pelton Wheel ever constructed. The museum has a secluded picnic area alongside a rushing creek. Donation.

NORTH STAR HOUSE

12075 Auburn Rd., Grass Valley
530-272-1873.

The North Star House is a 10,000 square foot home designed in 1905 by the renowned architect Julia Morgan (California's first woman architect).

Built in the Arts and Crafts style, the home is listed on the National Register of Historic Places and located on a portion of the former North Star Mine. The North Star House and its historic grounds are now open as a cultural event center for all to enjoy.

SEARLS HISTORICAL LIBRARY

Open Monday-Saturday, 1-4 p.m.
161 Nevada City Hwy., Nevada City
530-265-5910

Operated by the Nevada County Historical Society. Over 10,000 Nevada County historical photographs, nearly 3,000 printed books on early California and Gold Rush history and nearly 1,000 maps of the area. Call during business hours to verify research help is available.

ST. JOSEPH'S CULTURAL CENTER

Open Wednesday - Saturday,
12:30 to 3:30 p.m.
410 S. Church St., Grass Valley
530-273-5509

Located at the St. Mary's Academy, built in 1865 as a convent for Sisters of Mercy. It is registered as a State Historical Landmark. Tours are led by docents. Donation.

■ BOOKTOWN, USA

Known as one of the very few “book towns” in the country, Nevada City and Grass Valley are a resource for readers, collectors, authors, dealers, scholars and researchers. Many stores specialize in one or more areas of interest and many have general stock. New, used, rare, out-of-print and antiquarian books, ephemera, prints and maps can be found.

THE BOOK SELLER
107 Mill St., Grass Valley
530-272-2131 • bookseller.biz

BOOKTOWN BOOKS
107 Bank St., Grass Valley
530-272-4655

BUD'S ART BOOKS
See website to order by phone 13393
Grass Valley Ave. #7, Grass Valley
530-273-2166 • budplant.com

**CARL MAUTZ VINTAGE
PHOTOGRAPHS & PUBLISHING**
329 Bridge Way, Nevada City
530-478-1610 • carlmautz.com

HARDY'S BOOKS
PO Box 95, Nevada City
530-470-9090 • hardybooks.com

HARMONY BOOKS
130 Main St., Nevada City
530-265-9564

AN INNER SANCTUM
308 Broad St., Nevada City
530-478-9905

**MAIN STREET BOOKS
& ANTIQUES**
214 Main St., Nevada City
530-277-7949

TOAD HALL BOOK SHOP
108 N. Pine St., Nevada City
530-264-7183

SIERRA THEATERS

**BETTER ON THE
BIG SCREEN!**

**TWO LOCATIONS IN
GRASS VALLEY**



165 Mill Street
Grass Valley, CA



399 Sutton Way
Grass Valley, CA

SHOWTIMES

www.sierratheatres.com

530-477-9000

Photo: Bryan Gallagher

■ WELLNESS

In need of a little R&R? Nevada County is a haven for those seeking to relax the mind, body, and spirit. From fabulous day spas to a friendly ashram, you can enjoy a visit full of peace and tranquility year round.

ANANDA VILLAGE

Home of the Expanding Light Meditation and Yoga Retreat, Crystal Hermitage Gardens and Museum, and more.
14618 Tyler Foote Rd., Nevada City
530-478-7636 • anandavillage.org

BEL CAPELLI SALON & DAY SPA

Full service salon and day spa.
227 Broad St. #101, Nevada City
530-265-3200 • belcapellisalonspa.com

BODY ESSENCE DAY SPA, SALON & BOUTIQUE

All organic materials used in all treatments. By appointment only.
230 Main St., Nevada City
530-575-9317 • Bodyessencedayspas.com

BODYWORKS SALON & DAY SPA

Full service salon and day spa; wedding packages available.
1087 E Main St., Grass Valley
530-273-2099 • Salonbodyworks.com

CALIFORNIA COLLEGE OF AYURVEDA

The nation's premiere ayurvedic instruction institution. Day spa featuring both ayurvedic and western massage and treatments.
700 Zion St., Nevada City
530-478-9100 • ayurvedacollege.com

ELEVATION 2477'

Offering medical and adult use cannabis, professional wellness associates, patient resources, cannabis education, and a wide variety of lab tested products.
569 Searls Ave, Nevada City
530-264-7684 • Elevation2477.com

HAPPY PATH WELLNESS CENTER

Offering over 10 natural healing and wellness modalities; with programs for First Responders, Seniors and Veterans.
11440 Pleasant Valley Rd., Penn Valley
530-386-6897 • happypathwellnesscenter.com

HEAD TO HEAL DAY SPA

Advanced skin care, massage & spa body treatments, nail services, mineral cosmetic makeovers, spray tanning and more in a serene atmosphere.
By appointment only.
17325 Penn Valley Dr., Penn Valley
530-432-4777

LADYBIRD AESTHETICS

901 La Barr Meadows Rd. Unit D, Grass Valley
406-212-5000 • ladybird-aesthetics.com

REVIVAL FLOAT & WELLNESS

Offering three float therapy tanks, infrared sauna, and massage.
262 S Auburn St., Grass Valley
530-802-5545 • revivalfloat.com

SIVANANDA ASHRAM YOGA FARM

Training and Advanced Teacher Training in Sivananda Yoga are offered as well as beginner yoga intensives and family oriented retreats.
14651 Ballantree, Grass Valley
800-469-9642 • sivanandayogafarm.org

VELA MASSAGE RETREAT

Offering therapeutic massage, all natural facials, hot tub & steam sauna sessions as well as yoga and movement classes.
763 B S Auburn St., Grass Valley
530-559-7172 • velamassageretreat.com

WOLF MOUNTAIN DAY SPA

Full service day spa offering several types of massage and facial services including microblading, waxing, natural mani/pedis, electrolysis, and more.
110 E Main St, Grass Valley
530-477-2340 • wolfmountaindayspa.xyz

■ ANTIQUE SHOPS

The historic streets of Grass Valley and Nevada City offer visitors the chance to explore many art galleries and antique shops. The downtown historic districts feature fine local and regional art and a wide variety of antiques and collectibles. Stop by a local chamber of commerce visitor center to pick up a brochure on local galleries and antique shops. Contact the Greater Grass Valley Chamber or Nevada City Chamber for a listing of area galleries. Below is a listing of local antique shops:

AN INNER SANCTUM

308 Broad St., Nevada City
530-478-9905

ANTIQUÉ EMPORIUM

150 Mill St., Grass Valley,
530-272-7302

HARDY BOOKS

P.O. Box 95, Nevada City
530-470-9090
hardybooks.com

KODO ARTS

JAPANESE ANTIQUES

571 Searls Ave., Nevada City
530-478-0912

LA CACHE

218 Broad St., Nevada City
530-265-8104
lacachejewelry.com

MAIN STREET ANTIQUES & BOOKS

214½ Main St., Nevada City
530-265-3108

THE MAGIC CARPET

408 Broad St., Nevada City
530-265-9229
themagiccarpet.biz

VINTAGE ON MILL

117 Mill St., Grass Valley
530-802-5335

■ AIRPORTS

NEVADA COUNTY AIRPORT

13083 John Bauer Ave., Grass Valley,
530-273-3374, secure.mynevada-county.com/nc/airports Nevada County Air Park is a county-owned public use airport in Nevada County. The airport is located three nautical miles east of the central business district of Grass Valley.

ALTA SIERRA AIRPORT

18575 Norlene Way, Grass Valley,
530-271-1400, asaoa.org. All guests must have specific permission and a thorough briefing from an owner/member of the Alta Sierra Airport prior to landing at Alta Sierra Airport.

The briefing must include Alta Sierra Airport operating rules and procedures. The Alta Sierra Airport is approved for day use operations only. It is considered a mountain airport and requires caution.

TRUCKEE TAHOE AIRPORT

10356 Truckee Airport Rd,
Truckee, 530-587-4119.

Truckee Tahoe Airport is a public airport two miles east of Truckee, California.
truckee-tahoeairport.com

GETTING MARRIED

in nevada county

Whether you want to be a spring bride wed in a riot of flowers or an autumn bride framed by the glory of the changing leaves, you cannot find a more romantic place to get married than Nevada County.

We have venues to suit every taste, as well as bakeries, florists, musicians, planners, photographers, and everything else a bride and groom could ask for to make their special day perfect.

In Nevada County, the bride and groom are royalty. We aim to make every last detail of your day exactly as YOU want it.

Are there special flowers that you want to carry down the aisle?

One of our local flower farms would be happy to grow those just for you. A special flavor of wedding cake? No problem. Several of our wineries even produce bubbly wines, so you can toast to the splendor of all Nevada County has to offer.

In addition to these venues, all churches and most wineries also host weddings and would be happy to give you a tour.

Wedding Venues

GRASS VALLEY

THE CENTER FOR THE ARTS

530-274-8384

thecenterforthearts.org

EMPIRE MINE STATE PARK

530-273-8522

empiremine.org

FOOTHILLS EVENT CENTER

530-271-1000

foothillsevents.com

HOLBROOKE HOTEL

530-460-4078

holbrooke.com

NEVADA COUNTY FAIR- GROUNDS

530-273-6217

nevadacountyfair.com

NORTH STAR HOUSE

530-272-1873

northstarconservancy.org

ST. JOSEPH'S CULTURAL CENTER

530-272-4725

saintjosephsculturalcenter.org

NEVADA CITY

HARMONY RIDGE LODGE

530-478-0615

Harmonyridgelodge.com

MINERS FOUNDRY CULTURAL CENTER

530-265-5040

minersfoundry.org

THE NATIONAL EXCHANGE HOTEL

530-362-7605

thenationalexchangehotel.com

THE ROTH ESTATE

530-478-0556

therothestate.com

THE STONE HOUSE

530-265-5050

Stonehouse.io

SCHRAMMSBERG ESTATE

242 Gold Flat Rd, Nevada City, CA 95959

530 265-5569

schrammsbergestate.com

NOTES:

[illegible]



Network Real Estate

Your Premier Independent Brokerage

Local Roots

Global Reach

Serving Nevada & Placer Counties
And The Entire Sierra Foothills
For Over 40 Years

www.Network-RealEstate.com



GRASS VALLEY - 167 S. Auburn Street • 530-272-8885

NEVADA CITY - 436 Broad Street • 530-265-2551



NEVADACITY FILM FESTIVAL

EXPOSING INDEPENDENT CREATIVITY FOR 22 YEARS

AUGUST 26-28TH NEVADACITYFILMFESTIVAL.COM

NEVADACITY
FILMFESTIVAL
PRESENTS

MOVIES UNDER THE PINES

SIX FRIDAY NIGHT SHOWINGS!

JUNE 10TH & 24TH

JULY 8TH & 22ND

AUGUST 12TH & 26TH

PIONEER PARK BAND SHELL

421 NIMROD STREET, NEVADA CITY

TICKETS: \$8/PER PERSON OR \$30/FAMILY OF 4

GATES AT 7:30PM / FILM AT SUNSET

OUTSIDE FOOD OK, NO OUTSIDE ALCOHOL

NEVADACITYFILMFESTIVAL.COM/MUTP