

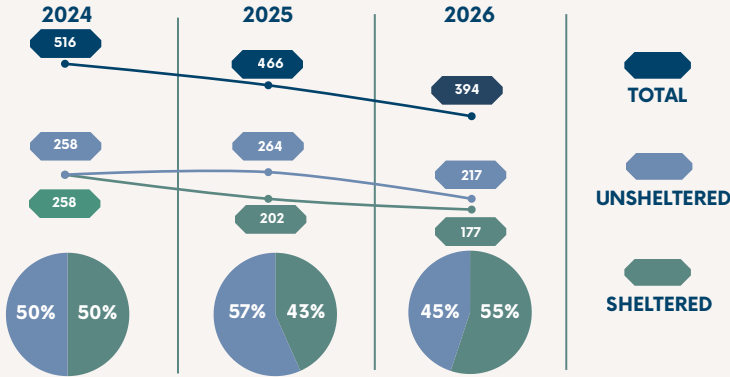
# NEVADA COUNTY 2026 POINT-IN-TIME COUNT & SURVEY



Each year, communities across the country conduct a Point-in-Time (PIT) Count to measure the number of individuals experiencing homelessness on a single night in January. While HUD requires annual counts of sheltered homelessness and biennial counts of unsheltered homelessness, Nevada County Continuum of Care conducts comprehensive counts of both sheltered and unsheltered populations every year.

The 2026 PIT Count reflects where people stayed the night of January 27, with surveys conducted in the days immediately following. The surveys accounted for 394 people experiencing homelessness in order to profile their experience and characteristics.

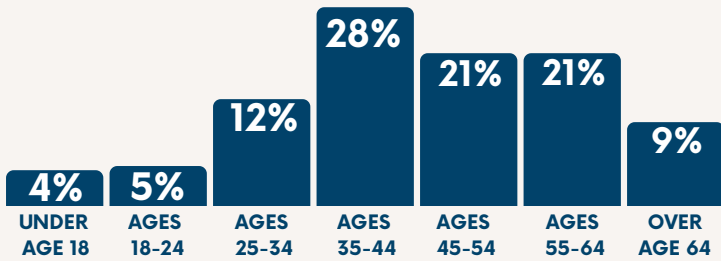
## TOTAL POPULATION LONGITUDINAL TREND



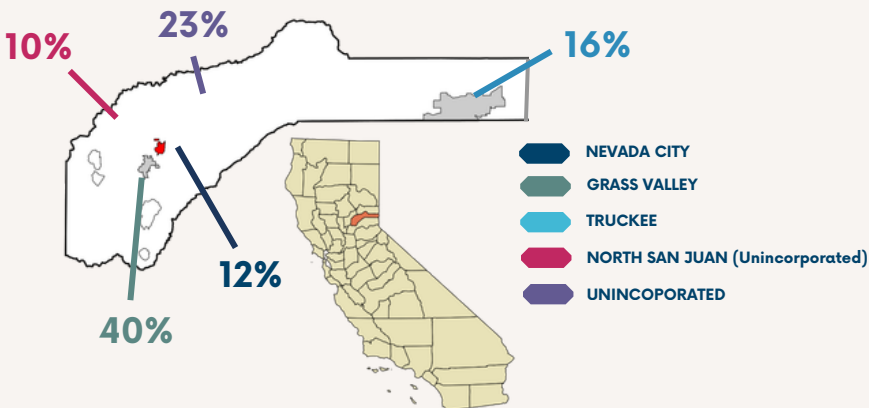
## 2026 SHELTERED/UNSHELTERED POPULATION



## 2026 UNSHELTERED INDIVIDUALS BY AGE

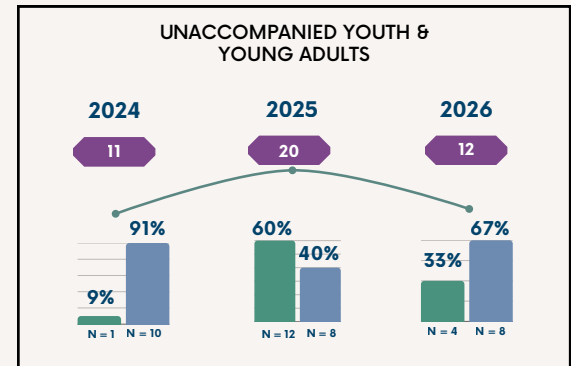
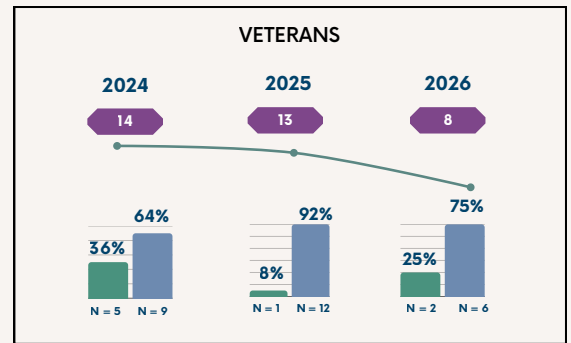
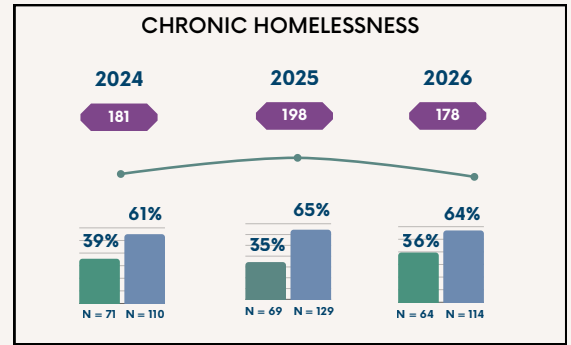


## 2026 POPULATION BY REGION



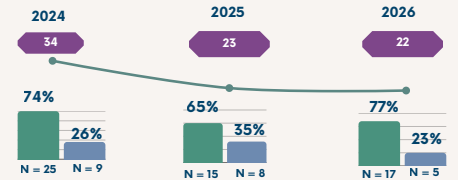
## SPECIAL POPULATION DATA

KEY: ■ SHELTERED ■ UNSHELTERED ■ TOTAL



## FAMILIES

# OF FAMILY HOUSEHOLDS



## TOTAL # OF INDIVIDUALS IN FAMILY HOUSEHOLDS

