

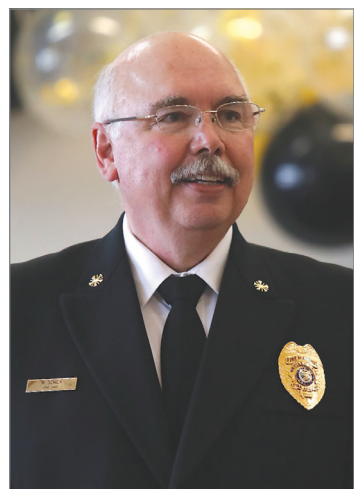
**SEEKING PART-TIME PIANIST**  
at  
**ST. ANDREW'S EPISCOPAL CHURCH**

One Sunday service per week. Advanced piano students and/or experienced professionals encouraged to apply. Salary dependent on expertise & experience.

Contact: Marilyn Stevens  
marilynstevens6@gmail.com



# Chief Schick retires



By **TONY REED**  
*The Siuslaw News*

After 32 years of service in emergency response, Western Lane Fire and EMS Authority Chief Michael Schick celebrated his retirement with other first responders in Florence.

In the WLFEA Conference

See **CHIEF**, Page A7



Retiring WLFEA Chief Michael Schick chats with those who came to wish him well on his retirement. Tony Reed photos.

# County rejects using Lodging tax dollars for rural deputies

By **TONY REED**  
*The Siuslaw News*

After a lengthy discussion on June 23, the Lane County Board of Commissioners rejected a proposal to use a percentage of Transient Lodging Tax money to help the Sheriff's rural patrol services.

The move occurred in the wake of a recent Florence Chamber awards ceremony, where it was highlighted that tourism brings millions in revenue and jobs to the coast. A similarly worded Chamber letter asked that the County protect Transient Lodging Tax dollars from being used for purposes other than tourism.

According to county meeting minutes, on May 20, the Budget Committee voted unanimously to recommend a time-limited use of transient lodging tax funds for public safety as part of the FY2026-27 budget.

"The recommendation allocates 1% of annual TLT revenue to courthouse public safety facilities for two years, ending June 30, 2028, unless otherwise changed by the Board of County Commissioners," the minutes said. "The remaining 50% of the TLT capital reserve and the remaining 1% of annual TLT revenue would be directed to future tourism-related facilities."

A letter shared with this paper from Florence Area Chamber of Commerce CEO Bettina Hannigan stated, "I respectfully urge you to preserve the additional 2% Transient Lodging Tax for its intended purpose: investment in tourism infrastructure and facilities that generate year-round economic activity and long-term returns for Lane County."

"The tourism industry supported this increase because it was presented as an investment in tourism development—not as a general revenue source," the letter states. "Businesses understood that these funds would be used to strengthen the visitor economy, grow off-season demand, and create facilities that generate new visitor spending for decades to come."

## BUDGET RESERVES

County administrator Steve Mokoisky set the stage by explaining that several budget committee meetings had taken place prior to the meeting and that Lane County has rebounded financially in the last 12 years.

"We've gone from deficit

See **LODGING**, Page A7

# Jeeps on display July 11 at Johnson Motors



Jeeps of all types return for the second annual Jeep Junction Show & Shine, a Jeep-only event, on Saturday July 11th at Johnston Motors on Hwy 101. The event is sponsored by the Florence Jeeps R Us club to both support the Oregon Coast Military Heritage Museum as well as celebrate the celebrity of the icon vehicle which was created for the military at the beginning of WWII. It is held at Johnston Motors, the local Ford dealership primarily because the Ford Motor Company produced approximately half of the nearly 640,000 jeeps built for the war effort. Throughout this week a 1942 Ford-built GPW will be on display in the showroom.

# Oregon's minimum wage rises 50 cents per hour

ALEX BAUMHARDT  
*Oregon Capital Chronicle*

Oregonians making minimum wage received a 50-cent bump per hour Wednesday, July 1, resulting in an average of \$573 more per year for someone working full time.

In the Portland metro, the floor for hourly wages will rise to \$16.80. In 15 counties and parts of three counties in the Willamette Valley, Northwest Coast and southern Oregon, the minimum wage rises to \$15.55 per hour, and in 18 mostly rural eastern Oregon counties, the minimum hourly wage will be \$14.55. The rural wage is always \$1 less than the standard wage, and the Portland minimum

wage is always \$1.25 more due to the higher cost of living.

A 2016 Oregon law requires the Oregon Bureau of Labor and Industries to adjust statewide minimum wages annually for inflation. The bureau announced the 50-cent per hour increase in April, which reflects a 3.3% rate of inflation for the cost of food, energy, essential goods, housing and medical services between March 2025 and March 2026, according to the U.S. Bureau of Labor Statistics.

Inflation has since gone up, in large part due to the higher cost of fuels driven by the U.S. war in Iran. The most recent rate of inflation

calculated between the end of May 2025 and the end of May 2026 was 4.2%, according to the federal labor statistics bureau.

Calculated at that rate, the average hourly minimum wage bump would be closer to 63 cents.

Oregon is one of more than three dozen states that pay higher minimum wages than the federal standard of \$7.25, which has gone unchanged for 17 years. Over the past decade, Oregon's standard minimum wage has gone up by \$6.30 per hour, or about 63 cents per year.

About 4% of Oregon workers earn minimum wage, according to state data. Among them, slightly more than half

are women, more than 40% are Black or Hispanic and most — nearly 90% — are adults at least 20 years old, according to recent analysis from the left-leaning Washington, D.C.-based think tank Economic Policy Institute.

<https://oregoncapitalchronicle.com/briefs/oregons-minimum-wage-rises-50-cents-per-hour-this-week/>

*Oregon Capital Chronicle is part of States Newsroom, a network of news bureaus supported by grants and a coalition of donors as a 501(c)(3) public charity. Oregon Capital Chronicle maintains editorial independence. Contact Editor Lynne Terry for questions: info@oregoncapitalchronicle.com.*

## INSIDE

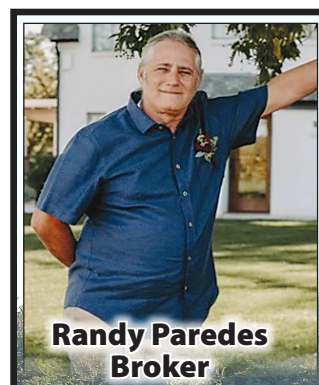
Obituaries — A2  
Sports & Lifestyle — B1

Opinion — A3  
Classifieds — B6-7



Follow us for the latest news:  
/SiuslawNews@Siuslaw\_News  
TheSiuslawNews.com

Siuslaw News  
2 Sections | 16 Pages  
Copyright 2026



**Randy Paredes**  
Broker

**IT'S CLOSE BUT IT FEELS SO FAR AWAY...**

## 88282 ELMONT DR.

Come spread out and enjoy privacy and convenience on this secluded 1/2 acre property. Located off Heceta Beach Rd it is both close to all your every day needs while also a short drive to the beach and all the Oregon Coast has to offer. The property has plenty of room to park an RV, boat or trailer. It has a large detached garage and the triple wide manufactured home is spacious and ready for all your creative ideas. Come out and take a look and let your imagination run wild!  
\$499,000. CB#12967/MLS#548750372



**COLDWELL BANKER**  
**COAST REAL ESTATE**

541.997.7777

"WE'RE NEXT TO THE BRIDGE."

100 HWY. 101

SEE ALL FLORENCE LISTINGS AT [CBCOAST.COM](http://CBCOAST.COM)



# Now back to that puzzle – It didn't want to be solved – Where is it?

BY BOB HORNEY

Ok, if you read last week's article, you know that five years ago the Support Person Statute ORS 441.049 was approved and implemented which mandated patient rights when visiting Emergency Rooms and Hospitals. As evident in the title, the Legislature found a new title for the previously titled Contact. Actually, the Legislature named the person for what they were – a Support Person. With that new title came mandated responsibilities. With that move by the Legislature, our HealthCare Terminology got a bit more confusing

– as if it wasn't confusing enough before. That seems like an easy, sensible fix (calling it what it is) but in 5 years it hasn't received that fix. So, I am here today to propose a fix for it and give all patients a common term to use when seeking or using a Support Person – there you have it – "Support Person."

Take a look at what the patients expected from their chosen Contacts... Support! Look at what the Legislature mandated patients receive from their Support Person – SUPPORT! However, the Statute addresses only the Hospital and Emergency Department. Therefore, if we visit our PCP with

a problem and get sent across the street to the Emergency Department, we go from Do you have a Contact – to – Do you have a Support Person.

Granted, there is more to it than just removing Contact from the clinic and replacing it with Support Person, but aside from what the Legislature mandated, our Contact at the clinic and the Support Person at the Hospital and Emergency Department are basically doing the same thing for the patient they are with – providing Support. However, I believe a small amount of tweaking could make it work even better and would be well worth the time

and effort. And I want PeaceHealth to keep this in mind – I am not raising an issue just to raise an issue – and then walk away. Not on your life! My sleeves are all rolled up and I'm ready to go to work.

Having the same terms between clinic and hospital would surely save a lot of confusion. Informational fliers posted around the clinics and hospital and maybe even handed to patients at registration in both the clinic and hospital would help make patients aware of all the benefits a Support Person would provide them if and when they needed one. I'm talking about the what,

when, how, who, why, etc. of a Support Person.

As a Patient Advocate (Support Person) right here in Florence and serving on various PeaceHealth committees for 20+ years and counting, I know how important it is to get critical information out to the public before they become a patient, need it and don't know where to find it. I mentioned informational fliers and handouts a bit earlier and we can add Patient Portal to that.

So, as I wrap it up here, my hope is that I will be invited by PeaceHealth to work with local PeaceHealth Staff to bring Support Person

front and center – Clinic, Hospital and Emergency Department. Getting to this point has taken a lot of digging, research, helpful critiquing by good neighbor Debbie and some luck. My hope is PeaceHealth will see the same opportunities I see in improved health-care with the effective use of Support Persons in all areas of PeaceHealth.

Just think...fewer medical appointments missed, better home follow-up by patient, more efficient use of healthcare staff time especially by the PCP, everyone more relaxed during patient/doctor/Support Person visit. It is a WIN/WIN FOR EVERYONE!

## POLICE LOG

The Florence Police Department responded to the following calls from June 23 to June 29

### TUESDAY, JUNE 23

At 7:53 a.m., a caller reported a possible physical domestic dispute occurring inside a moving vehicle in the 5600 block of Highway 126. Oregon State Police was also notified, but officers were unable to locate the described vehicle.

At 10:49 a.m., a caller reported a possible missing child but immediately canceled, saying the child had been found.

At 11:46 a.m., a call I reported that a logging truck had a near miss with another vehicle in the area of Highway 126 at mile marker 10. Officers

responded, but found the vehicles had left the area.

At 2:43 p.m., officers responded to the 1500 block of 12th St. for a request to remove a subject from a property. Officers contacted the subject to find he had two warrants from Lane County circuit Court. The subject was taken into custody.

At 5:44 p.m., officers responded to the 3800 block of Highway 101, after a concerned Citizen said kids were operating a lemonade stand too close to the street. Officers determined the stand was a safe distance from the street and not blocking or impeding traffic. No further action was taken.

At 6:07 p.m., and off-duty officer in the 4700 block of Highway 101 reported seeing one of the subjects from the 7:53 a.m. call. However, officers were out of position and unable to respond to the area.

At 7:52 p.m., a caller

reported seeing people smoking marijuana inside a car in the 5600 block of Highway 126 and was concerned they might drive. Officers were unable to locate the described vehicle.

At 11:41 p.m., officers assisted medical personnel in the 1600 block of Rhododendron Drive.

### WEDNESDAY, JUNE 24

At 10:50 a.m., a caller reported transient subjects with animals in the 1300 block of Bay Street, who were allegedly cussing and yelling at passers. Officers responded to the area and observed the subjects from a distance, but saw no evidence of such behavior. Officers left the area, but another call alleged the subjects were leaving trash and that the animals were aggressive. Officers responded to the area again to find no trash, no problems with the animals. Officers determined the situation was not as it had been reported.

At 4:14 p.m., officers responded to the 1800 block of Oak Street after a caller said teenagers in the area had been chasing her. Officers contacted the caller and determined that no crime had been committed. No further action was taken.

At 6:49 p.m., officers responded to the area of Bay and Maple Street for a report of two male subjects yelling at each other. Officers determined the subjects had been in a verbal dispute and advised the parties to stop.

### THURSDAY, JUNE 25

At 8:51 a.m., a caller reported finding an electric moped and a small electric quad in the area of Munsel Lake Road and 52nd. Officers arrived to

find the vehicles were on private property and had not been reported as stolen.

At 12:08 p.m., a caller reported that a relative had been harassed on social media. Officers attempted, but were unable to contact the reported victim.

At 12:17 p.m., a caller in the 700 block of Maple reported that a landlord had been demanding entry into the rental property. The caller did not trust the landlord and called the police. Officers arrived to speak to the landlord, who said he had not been aggressive and simply needed to make entry to conduct repairs. All parties were counseled.

At 1:11 p.m., a subject came into the police department to surrender old ammunition for destruction.

At 3:45 p.m., a caller in the 700 block of Highway 101 to report the possible theft of their rental vehicle. Officers arrived to find that the vehicle was there, but the renter wanted to report that someone had smeared something resembling Chapstick on the car's hood.

At 3:58 p.m., a caller reported losing a wallet somewhere in the Florence area.

At 4 p.m., officers assisted medical personnel in the 1400 block of Spruce.

At 6:47 p.m., a resident turned in an ID card and bank cards found in the dunes. Officers could not locate the owner, and the cards are being stored at the police department.

### FRIDAY, JUNE 26

Nothing of interest to report

### SATURDAY, JUNE 27

At 8:06 a.m., a caller reported finding abandoned items in the 600 block of Rhododendron. Officers arrived to find a destroyed cell phone, old blankets and other

materials. All items were disposed of.

At 11:18 a.m., officers responded to the 1400 block of 10th St. for a reported dog bite. Subject said a neighbor's dog got out and bit her hand, but did not break the skin or cause injury. No charges were requested, and the dog's owner was counseled about keeping it under control.

At 4:38 p.m., officers responded to the 2400 block of 16th St. for a reported dispute occurring. Officers found a dispute had occurred between a mother and adult daughter. It was determined that the mother had assaulted the daughter in the presence of young children, which constitutes a felony. Officers were mandated to arrest the mother for assault 4.

At 9:32 p.m., a caller reported hearing a loud boom in the area of 17th and Pine. Officers on patrol also heard the boom, but were unable to locate the source.

### SUNDAY, JUNE 28

At 12:57 a.m., an officer on patrol observed a motorcycle that had been used to previously elude officers. Upon checking, it was found that the motorcycle had been reported stolen from Corvallis. The case remains under investigation, and the Corvallis Police Department was notified.

At 5:24 p.m., a business in the 1700 block of 126 reported that a subject had stolen alcohol. Officers reviewed the video and were able to identify the subject. Later, an officer on patrol observed that subject, who immediately fled. Officers have probable cause to arrest this subject for theft and active arrest warrants.

At 10:58 p.m., officers responded to the 1700 block of 8th Street for a reported loud party

See POLICE, Page A6



**Buying or Selling? I can help.**

**TR HUNTER REAL ESTATE**  
541-997-1200

1749 Highway 101  
541-997-1200

**541-991-7826**

## Donna Embree

May 16, 1931 - June 11, 2026

Donna Louise Embree died and flew away to heaven on June 11, 2026. She was born on May 16, 1931, in Lincoln, Nebraska to Elmer and Nellie Russell Jacobson. She had two younger brothers, Robert and Clark (Butch). She attended the Universities of Nebraska and Colorado and graduated from the University of Oregon earning a teaching degree, with graduate work in Library Science.

In 1949, she married Richard Embree, and they had three children: Barbara, Michael, and Thomas. The family moved to Oregon in 1960 where both Richard and Donna taught in the Eugene District schools for 28 years. Donna was an avid reader, a watercolor artist, and writer. Her feature columns appeared in Midwest newspapers.

Richard and Donna retired in 1987 to a



home on Siltcoos Lake in Florence. She was a member of the Red Hat Society, the Dark Horse Book Club, the Friends of the Florence Library, the Genealogy Society, and the Florence United Methodist Church.

Donna was preceded in death by her parents, brothers, husband, and son, Michael. She is survived by daughter Barbara of Florence, son Thomas and wife Julie of Eugene, grandchildren Zachary, Alexandra and son-in-law Nick Newson of Eugene. She lived long enough to hold her great-grandson Maxwell.

A Memorial Service is scheduled for July 11, 2026, 1 p.m. at Florence United Methodist Church, 333 Kingwood St. in Florence, OR, 97439. Donations to Peace Health Hospice or the Free Lunch Program at her church are appreciated.

Edward Jones

> edwardjones.com | Member SIPC

### Compare our CD rates

Bank-issued, FDIC-insured

24-month

**4.250%**  
APY\*

12-month

**4.100%**  
APY\*

6-month

**4.000%**  
APY\*

Call or visit your local financial advisor today.



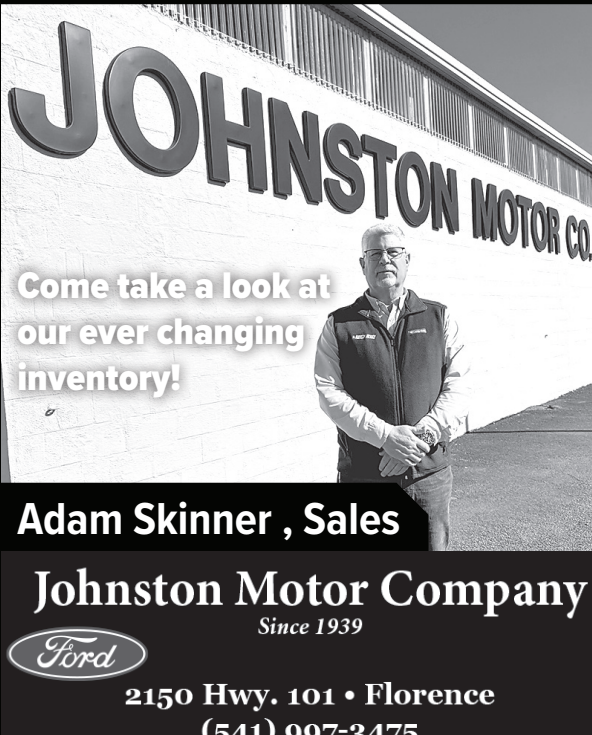
**David L Mosher**  
Financial Advisor  
1441 7th Street Suite B  
Florence, OR 97439  
541-590-2984



**Arlena C Morrow, ChFC®**  
Financial Advisor  
1441 7th Street Suite B  
Florence, OR 97439  
541-305-6093

\*Annual Percentage Yield (APY) effective 07/01/26. CDs offered by Edward Jones are bank-issued and FDIC-insured up to \$250,000 (principal and interest accrued but not yet paid) per depositor, per insured depository institution, for each account ownership category. Please visit www.fdic.gov or contact your financial advisor for additional information. Subject to availability and price change. CD values are subject to interest rate risk such that when interest rates rise, the prices of CDs can decrease. If CDs are sold prior to maturity, the investor can lose principal value. FDIC insurance does not cover losses in market value. Early withdrawal may not be permitted. Yields quoted are net of all commissions. CDs require the distribution of interest and do not allow interest to compound. CDs offered through Edward Jones are issued by banks and thrifts nationwide. All CDs sold by Edward Jones are registered with the Depository Trust Corp. (DTC).

FDI-1867P-A-E-FL EXP 31 MAR 2028 AECSPAD 2930068



**JOHNSTON MOTOR CO.**

Come take a look at our ever changing inventory!

**Adam Skinner, Sales**

**Johnston Motor Company**  
Since 1939

**2150 Hwy. 101 • Florence**  
**(541) 997-3475**

# Citing the Municipal Code- Bike and motorized vehicle safety

**DAN FRAZIER- CITY OF FLORENCE**  
Code Enforcement Officer

As warmer weather arrives, more people are using bicycles, e-bikes, scooters, mopeds, and pocket bikes throughout Florence. The City would like to remind residents of the rules that help keep everyone safe on our streets, sidewalks, parks, and trails.

Bicycles are generally allowed on city streets and on bike lanes. However, bicycles are prohibited on pedestrian sidewalks and pathways unless specifically

permitted, such as on residential sidewalks, designated park pathways, or shared-use trails. Riders should always yield to pedestrians and provide an audible warning before passing.

Motorized scooters may operate on roadways posted at 25 mph or less and may use marked bike lanes on higher-speed roadways where permitted. Mopeds must comply with Oregon licensing, registration, and insurance requirements. Pocket bikes and mini motorcycles are not street legal and may only be operated in areas

specifically designated by the City.

All riders must obey traffic signs, signals, and other traffic control devices. Operators are expected to ride responsibly and may not race, perform reckless maneuvers, or operate in a manner that endangers people or property. Attaching a bicycle, scooter, or other conveyance to a moving vehicle is also prohibited.

For safety, riders under 16 years of age are required to wear approved protective helmets. Any bicycle, scooter, or other conveyance operated after dark

must be equipped with a white front light and a rear reflector or light visible to approaching traffic.

Residents should also remember that many City parks, pathways, and public access areas have specific rules regarding motorized conveyances. Where signs are posted prohibiting certain uses, those restrictions must be followed.

By understanding and following these regulations, residents can help keep Florence's transportation system, parks, and public spaces safe and enjoyable for everyone.

## Block Party to return

The City of Florence is excited to announce that we will be hosting the 2026 Community Block Party on Friday, July 17, from 5 to 10 p.m. in historic old town Florence. The 2026 community block party will be held on Bay Street between Laurel Street and the Siuslaw River Bridge. A free concert will be provided from 6 to 10 p.m. by the band 5

guys named Moe.

The City invited partner agencies and organizations to set up throughout the block party area, as well as fun activities for people of all ages. The six previous block parties were made possible by the generous support of City sponsors. It's more fun every year, so grab the kids and your dancing shoes and come out to join the party.

## Florence Community Scavenger Hunt returns

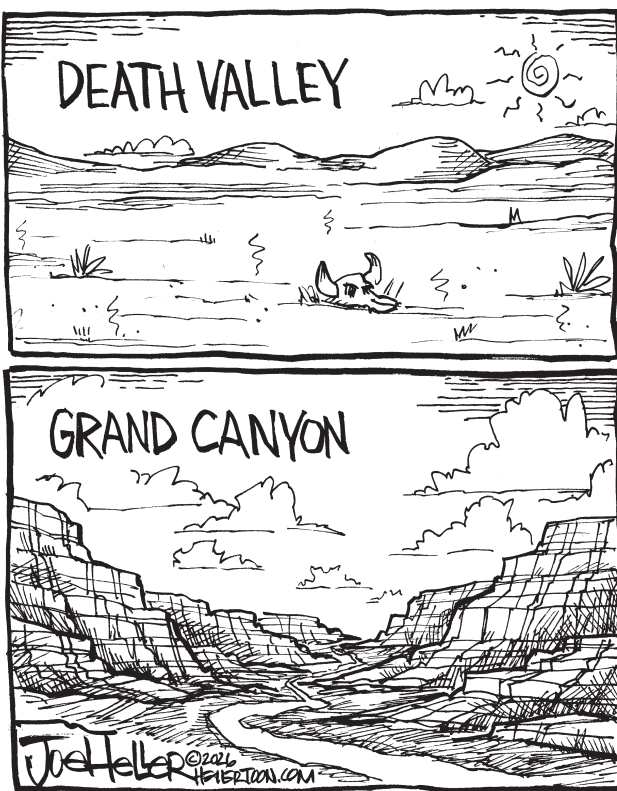
Join the City of Florence for the 2026 Florence Community Scavenger Hunt! The City of Florence is utilizing GooseChase to encourage exploration of the Florence Community. This year's Community Scavenger Hunt is sponsored by the Central Oregon Coast Board of

Realtors. Thank you!

The game went live on Friday, July 3, at 8 a.m. and will close on Sunday, July 19, at midnight.

Learn more about how to participate and get ready to explore Florence! Go to the City website/newsletter and find this story to use the Goosechase weblink.

## BIG WIDE OPEN SPACES



WEDNESDAY	THURSDAY	FRIDAY	SATURDAY	SUNDAY	MONDAY	TUESDAY
JULY 8	JULY 9	JULY 10	JULY 11	JULY 12	JULY 13	JULY 14
Partly Cloudy 52°/64°	AM Clouds/ PM Sun 51°/63°	Partly Cloudy 51°/62°	Mostly Sunny 51°/64°	Sunny 51°/66°	Sunny 52°/67°	Sunny 53°/68°



## Siuslaw News

503-444-7924

The newspaper is published every **WEDNESDAY**. A member of the National Newspaper Association and Oregon Newspaper Publishers Association. Periodicals postage paid at Florence, Ore. Postmaster, send address changes to: Country Media, P.O. Box 670, Salem, OR 97301.

### OFFICE HOURS

Siuslaw News office is closed to in-person service. Call 503-444-7924 - Monday - Friday 9 a.m. - 5 p.m.

### DEADLINE

**WEDNESDAY EDITION**

Classifieds, Legal and Obits Deadlines

**WEDNESDAY, 4 p.m.** the prior week.

Display ads, **WEDNESDAY, 10 a.m.** one week prior

Please submit press releases to

[treed@countrymedia.net](mailto:treed@countrymedia.net)

### NEWSPAPER

**SUBSCRIPTION RATES**

1 year subscription | \$90

6 months Subscription | \$65

Monthly Subscription | \$10

**E-Edition Online Only**

1 year subscription | \$75

Monthly Subscription | \$9

Mail subscription includes E-Edition.

Website & E-Edition: [TheSiuslawNews.com](http://TheSiuslawNews.com)

### OUR STAFF

**Joe Warren | Director of Publication**

[jwarren@countrymedia.net](mailto:jwarren@countrymedia.net)

**Office Manager**

503-444-7924 | [snofficemanager@countrymedia.net](mailto:snofficemanager@countrymedia.net)

**Gary Winterholler | Multi-Media Sales Consultant**

509-216-1658 | [gwinterholler@countrymedia.net](mailto:gwinterholler@countrymedia.net)

**Tony Reed | Editor**

[treed@countrymedia.net](mailto:treed@countrymedia.net)

### LETTERS TO THE EDITOR POLICY

The *Siuslaw News* welcomes Letters to the Editor and Guest Viewpoints as part of a community discussion of issues on the local, state and national level. Letters are subject to editing for length, grammar and clarity. Publication of any letter is not guaranteed and depends on space available and the volume of letters received.

Email letters to [treed@countrymedia.net](mailto:treed@countrymedia.net)

### TO BE CONSIDERED FOR PUBLICATION:

Letters must address pertinent or timely issues of interest to our readers at-large. In addition:

- Letters reflect the opinion of the writer. The *Siuslaw News* cannot verify the accuracy of all statements made in letters. Authors should ensure any information is accurate, fair and not from second-hand knowledge or hearsay, and include sources where possible.
- Letters have a suggested 300-word limit and may be edited for grammar and clarity. Occasionally letters will be longer.
- Authors must sign their full name and include their street address (only city will be printed), as well as a daytime phone number and/or email address for verification. The person who signs the letter must be the actual author. *Siuslaw News* does not accept anonymous Letters to the Editor.
- *Siuslaw News* will not print form letters, libelous letters, business promotions or personal disputes, poetry, open letters, letters espousing religious views without reference to a current issue, or letters considered in poor taste. Letters also may not be part of letter-writing campaigns.
- Writers are limited to one published letter every two weeks.

### TO SUBMIT TO THE SIUSLAW NEWS:

Emailed submissions are preferred. All letters need to include full name, address and phone number; only name and city will be printed. Handwritten or typed letters must be signed. The newspaper, at the sole discretion of the publisher and editor, reserves the right to reject any letter that doesn't follow the above criteria.

### WHERE TO WRITE

**President Donald Trump**

The White House  
1600 Pennsylvania Ave. NW  
Washington, D.C. 20500  
Comments: 202-456-1111  
Switchboard: 202-456-1414  
TTY/TDD: 202-456-6213  
[www.whitehouse.gov](http://www.whitehouse.gov)

**State Rep. Boomer Wright**

(Dist. 9)  
PO Box 39000 Florence, OR  
97439  
503-986-1409 | 541-361-6042  
Email: [Rep.BoomerWright@oregonlegislature.gov](mailto:Rep.BoomerWright@oregonlegislature.gov)

**Oregon Gov. Tina Kotek**

900 Court St., Suite 254  
Salem, Ore. 97301-4047  
503-378-4582  
[www.oregon.gov/gov](http://www.oregon.gov/gov)

**Lane County Dist. 1**

**Commissioner Ryan Ceniga**  
125 E. Eighth St.  
Eugene, OR 97401  
541-682-4203  
Email: [Ryan.Ceniga@co.lane.or.us](mailto:Ryan.Ceniga@co.lane.or.us)

**U.S. Sen. Ron Wyden**

202-224-5244 | 541-431-0229  
[www.wyden.senate.gov](http://www.wyden.senate.gov)

**Florence City Council**

**Mayor Rob Ward & Councilors**  
**Mike Webb, Sally Wantz,**  
**Robert Carp & Jo Beaudreaux**  
Florence City Hall, 250  
Highway 101, Florence, 97439  
541-997-3437  
[ci.florence.or.us](http://ci.florence.or.us)

**U.S. Sen. Jeff Merkley**

202-224-3753 | 541-465-6750  
[www.merkley.senate.gov](http://www.merkley.senate.gov)

**U.S. Rep. Val Hoyle (4th Dist.)**

202-225-6416  
[www.hoyle.house.gov](http://www.hoyle.house.gov)

**Dunes City Council**

**Mayor Ed McGuire & Councilors**  
**Duke Wells, Melissa Stinson,**  
**Susan Snow, Rich Olson, Chris**  
**Clemons, and Larry Farnsworth**  
Dunes City Hall, 82877 Spruce St.,  
Westlake, OR 97493  
541-997-3338  
[dunescity.gov](http://dunescity.gov)

**State Sen. Dick Anderson**

(Dist. 5)  
503-986-1705  
Email: [Sen.DickAnderson@oregonlegislature.gov](mailto:Sen.DickAnderson@oregonlegislature.gov)



# Thank You TO OUR GENEROUS 2026 FLOWER BASKET SPONSORS

## THE PORT OF SIUSLAW

**THREE RIVERS CASINO      NORTH BAY CONDO OWNERS ASSOCIATION**  
**BANNER BANK              CENTRAL LINCOLN PUD              MICHAEL PATRICK**  
**CITY OF FLORENCE, OR      HOAGLAND PROPERTIES      SHOREWOOD SENIOR LIVING**  
**ABEL INSURANCE CO.      BJS ICE CREAM      CLAUDIA CUMMINGS      NICKI LORENZ**  
**BILL MYER      BETH RUDOMETKIN      SHOREWOOD SENIOR LIVING      MITCHELL SLOAN**

All About Olives  
 John Aycock  
 Baha'is of Florence  
 Diane M. Bailiff  
 Bill & Heather Boehner  
 Books & Bears  
 Tria Brenner  
 Michael Buck  
 Paula & Dave Burnette-Hansen  
 Shirley Buttenhoff  
 Central Oregon British Car Club  
 Nancy Cline  
 Coast Radio  
 County Transfer & Recycling  
 Linda Czemerly  
 Dairy Queen  
 Paul DeMersseman  
 Rebecca Fain  
 Tina Fithian  
 Florence Artefacts  
 Florence Garden Club  
 Florence Regional Arts Alliance  
 Florence United Methodist Church

Florence Veterinary Clinic  
 Chris & Ruth Franke  
 Brian & Karen Gabler  
 Cindy Goldstein  
 Goodman's Floor Covering  
 Spunky Gray  
 Laurie Green  
 Jack & Bettina Hannigan  
 Suzanne Henderson  
 Hine Investments  
 Jamie Hunt  
 Susy Lacer  
 Sharon Lazarow  
 Laurel Bay Gardens Inc.  
 Susan Leland  
 Lisa Levy  
 Carol Lunceford  
 Richard E. Mason  
 Lucas McQuillan  
 Eric & Katy Menard  
 Jeanette Merchant, LMFT  
 Timothy Moffett  
 Ron Moore

Linda Moy  
 Merilee Mulvey  
 Ardis Noonan  
 Northwest Land Surveying, Inc.  
 Periwinkle Cottage  
 Pest Tech, Inc.  
 Vicki Philben  
 PFLAG Florence, OR  
 Bartha & Allen Ransom  
 Frances Rickaby  
 Timothy Salisbury  
 Margie Shrum  
 Sign Stop  
 Stephen Skidmore  
 Sam Spade  
 Harlen Springer  
 Tina Springmeyer  
 St. Mary's Women's Guild  
 Raychell Sumner  
 Ann Taylor  
 Robert & Kathy Ward  
 Kay Willman

### *In Honor/Memory of Flower Baskets*

KARA ALFORD      FERNE ELIZABETH AYCOCK      SARAH BARNARD  
 GWENDOLYN LEE FRENCH COX      JOHN & GENE CZEMERYS  
 MIKE FITZGERALD      KIT HAYES      EARL & BARBARA LANDON  
 CHARLENE MAZAROVICH      GERALD & SHIRLEY STILES AND JOYCE BOEHNER  
 UNITED STATES COAST GUARD SIUSLAW RIVER STATION  
 LELA W.-L.      WALTER YOUNG



*A Special Thank You to our Partners at*



**GOT A FULL  
GARAGE?**  
 Time to Make Some  
 Money off of It!

**COMMUNITY-WIDE  
GARAGE  
SALE**  
**SEPTEMBER 11-13**

Get on Our Map!  
 Online registration now open



[FlorenceChamber.com/events](http://FlorenceChamber.com/events)

**Community Fundraising | Local Activities | Register online to Promote Your Event! | Questions? Call 541-997-3128 x 103**

# Special Entertainment Experience: Performance Poet Chris Chandler Returns to Florence — July 16

Nationally known performance poet, Chris Chandler, accompanied by his award-winning guitarist companion, Paul Benoit, are returning to Florence for a single special evening performance.

Chandler's spirited theatrical-poetic performances are regarded by many as a unique entertainment experience. He has toured over America for over 35 years, and worked with everyone from Allen Ginsberg to Ani DiFranco & Pete Seeger to Mojo Nixon.

Chandler started working with Paul Benoit in 2009. They weave Guitar and poetic voice tastefully.

"Everywhere they appear, from traditional stage to country fair, there is recognition of a totally unique entertainment experience." says Rand Dawson, long-time resident who has assisted in having Chandler and Benoit to Florence approaching over 20 events.



"But this event is very special. Chris has had a major accident!" says Dawson, "In recognition of his many Florence performances to help community organizations

we want to support his wish to make Florence the unique Oregon city venue in return assisting his special recovery tour after his multi-stage performances at the Oregon



photo: jen delyth 2010

Country Fair." Or as Chandler's website has just announced: "Since fracturing my skull, I don't care how many automatic doors slap me in the face and send me to the emergency room again. I have a road map, a number two pencil, and a yellow legal pad. Bring it on! I will kick

your ass! Touring now, trying to get back on our feet, has been challenging, but more than enjoyable!" Chris and Paul are coming to Florence following multiple-stage performances at the Oregon Country Faire. Come join in on Thursday, July 16, at the Unitarian Universalist

Fellowship, Heceta Beach Rd and Highway 101. Doors open at 3 p.m.. The 3:30 event is free, but donations are encouraged. No one will be turned away. The Unitarian "Starlight Cabaret" event offers refreshments and can be reached at (541) 997-2840 .

## Taste of Art and Wine Festival

Artists from as far as Coquille, Newport, and Eugene will join local artists in showcasing their works at the sixth-annual Taste of Art and Wine Festival this July.

In addition to enjoying juried art — including 2D, 3D, handcrafts, and photography — attendees

will have a chance to taste offerings from local wineries throughout the festival.

Hosted by the Florence Regional Arts Alliance (FRAA), all artwork will be evaluated by judges, with prizes awarded for all categories, as well as a People's Choice Award. The festival will be

held at the Florence Events Center on Saturday, July 25, from 11 am. to 6 pm, and Sunday, July 26, from 11 am. to 4 pm.

Come get a taste of some of the region's best art and most delicious wines during this unique, annual summer celebration of artistry.



# COMMUNITY BLOCK PARTY

**CITY OF FLORENCE**

**Old Town Florence**  
*Between Laurel St. & the Bridge*  
**5—10 P.M.**

**FRIDAY, JULY 17**

**Music, Fun, & Games for the Whole Family!**  
Full details at  
[www.ci.florence.or.us/2026BlockParty](http://www.ci.florence.or.us/2026BlockParty)

Featuring:  
**sqwysnamedmoe**  
LIVE MUSIC BEGINS AT 6 P.M.

**2026 Florence Community Scavenger Hunt**

**JULY 3 - JULY 19**

Complete Missions  
Earn Points  
[www.ci.florence.or.us/2026ScavengerHunt](http://www.ci.florence.or.us/2026ScavengerHunt)

Have fun & Explore Florence!

THANK YOU TO OUR SPONSORS!

# Oregon AG Rayfield highlights new Medicaid fraud charges amid national fraud crackdown

By **JULIA SHUMWAY**  
*Oregon Capital Chronicle*

Oregon Attorney General Dan Rayfield announced new criminal charges Tuesday against four people the state alleges stole taxpayer money and victimized vulnerable Oregonians by filing fraudulent Medicaid reimbursement claims.

Rayfield's announcement coincided with the federal government pressing Medicaid fraud charges against more than 450 people. In Oregon, each of the new cases involved providers investigated by the state's 22-person Medicaid Fraud Unit of investigators, auditors, attorneys and data analysts.

"At its core, combating Medicaid fraud is about fighting for working families, protecting vulnerable

Oregonians and holding bad actors accountable when they take advantage of taxpayer dollars," Rayfield said at a press conference.

None of the defendants in the recently filed cases Rayfield highlighted Tuesday have yet listed defense attorneys on the state's court information system, and none responded to calls to publicly listed phone numbers Tuesday afternoon.

• Edward Morgan III of Beaverton faces two counts of first degree theft, two counts of forgery, two counts of identity theft and one count of computer crimes tied to fraudulently receiving housing assistance for two individuals through the state's health-related social needs funds, according to Rayfield and charging documents.

• Linda Thomas of Corvallis and the company she owns, Gateway of Willamette Valley, each face charges for theft and making false claims for health care payments related to billing Medicaid for day support program services that were not provided to Medicaid recipients, according to Rayfield and charging documents.

• Amanda Thorne of Portland, a former Lane County employee, faces charges for allegedly making personal purchases that included paying rent and a car down payment with a government-issued credit card intended to be used for purchases for clients of Lane County's developmental disabilities services, according to Rayfield and charging documents.

• Tedros Gebrezgabhere,

who owns a medical transportation company in Portland, faces multiple charges of theft and making false claims for health care payments for billing for non-emergent medical transportation that he never provided, according to Rayfield and charging documents.

"In addition to holding bad actors accountable, we want to speak publicly about this work and these cases to hopefully deter people who might be considering taking advantage of our Medicaid system," Rayfield said.

Approximately 1.4 million Oregonians — roughly one in three people and more than half of all children in the state — receive health care through Medicaid, known here as the Oregon Health Plan.

Staff from Rayfield's

office were among the only employees of Democratic state attorneys general offices to attend a late May meeting on anti-fraud measures Vice President JD Vance led. Rayfield said while he objected to the late notice — his office received an invitation the Friday before Memorial Day for a meeting across the country the following Tuesday — he felt it was an important issue.

"This is incredibly bipartisan work that is being done by attorney general offices across the state and their fraud units at the state level," he said. "Currently, there are hundreds fewer people working on fraud investigations at the federal level now than there were when the Trump administration took over, and that's why this work is so important

right now at the state level. This is just another area where the states have had to step up when the federal government has stepped away from protecting consumers and taxpayers."

The Medicaid Fraud Unit has secured 348 criminal convictions, 156 civil settlements and judgments, \$14.9 million in criminal recoveries and \$131.7 million in civil recoveries since 2010, Rayfield said.

*Oregon Capital Chronicle is part of States Newsroom, a network of news bureaus supported by grants and a coalition of donors as a 501c(3) public charity. Oregon Capital Chronicle maintains editorial independence. Contact Editor Lynne Terry for questions: info@oregoncapitalchronicle.com.*

# Amber White to Become CEO of Oregon Pacific Bank

FROM OREGON PACIFIC BANK

Oregon Pacific Bancorp (ORPB), the holding company for Oregon Pacific Bank, today announced that President Amber J. White will assume the role of President and Chief

Executive Officer of both Oregon Pacific Bank and Oregon Pacific Bancorp, effective July 1, 2026.

CEO Ron Green, who announced his intention to retire earlier this year, will transition to the role of Executive Advisor and Board Member on July 1 and will continue to

support White, the Board of Directors, and the Bank through his retirement on September 16, 2026.

Green's departure concludes an over 37-year career in banking, more than half of which has been with Oregon Pacific Bank.

"Ron has led this institution with vision and purpose for nearly two decades," said Jon Thompson, Board Chair of Oregon Pacific Bank and Oregon Pacific Bancorp. "Under his leadership, the Bank strengthened its commitment to relationship-driven community banking and positioned itself for long-term success. The Board is grateful for his stewardship and confident in the continuity this succession provides."

Green joined Oregon Pacific Bank in 2007 as Chief Credit Officer, helping guide the Bank through the Great Recession. He was promoted to President & CEO and appointed to the Board of Directors in

2013. During his tenure as President, the Bank added three offices and grew total assets from \$177 million to over \$820 million.

"It has been the highlight of my career to be a part of Oregon Pacific Bank for the past 19 years," said Ron Green. "I am grateful to the Board of Directors for allowing our team to take calculated risks and build a stronger bank that is able to truly create meaningful value for our clients, employees, shareholders, and the communities we serve. We have positioned the Bank for continued success, and Amber will be an extraordinary CEO and community bank leader."

White joined Oregon

Pacific Bank in 2017 as Executive Vice President and Chief Financial Officer and was promoted to President and appointed to the Boards of Directors in January 2026. The succession from Green to White reflects a carefully planned investment in leadership development from within, preserving a commitment to the culture, community relationships, and institutional knowledge that define a true community bank.

"I'm grateful for the foundation Ron and this team have built, and for the relationships that make this bank what it is," said Amber White. "I look forward to serving our clients, employees, shareholders, and communities, and to ensuring Oregon Pacific Bank remains focused on what matters most."

## Backstreet Gallery July Featured Artists

**Debbie Boyle**  
Jewelry



**Caroline Estell**  
Oil Painter



Reception July 11th 3-5 pm  
Food, Wine, Music by Sunny Sundstrom

Backstreet Gallery • 1421 Bay St, Old Town, Florence • backstreetgallery.org



**Buying or Selling? I can help.**



**Melody Beaudro** 1749 Highway 101  
Principal Broker 541-997-1200

**541 991-2151**

**FEATURED PROPERTY OF THE WEEK**





**83413 OSPREY WAY**

INCREDIBLE ONE-OWNER SOUTH LAKES ESTATE! Nestled on 1.17 lush, beautifully landscaped acres, this exceptional custom home offers the perfect blend of luxury, functionality, and coastal living. Recent updates include newly refinished Tigerwood decking, complete exterior repainting with a transferable 10-year warranty, and low-maintenance landscaping for years of worry-free enjoyment. The spacious home features dramatic architecture with soaring 20-foot vaulted ceilings and expansive two-story windows that flood the living room with natural light while showcasing the surrounding beauty. Offering 3 large bedrooms, 3.5 bathrooms, a dedicated den/office, formal dining area, family room, living room, and oversized laundry room, there is ample space for both everyday living and entertaining. The chef's kitchen is designed to impress with solid-surface countertops, tile backsplash, beautiful hardwood cabinetry, and quality stainless steel appliances. The thoughtful floor plan provides flexibility and comfort for families, guests, or those working from home. A standout feature of this property is the incredible 1,740-square-foot garage complex, complete with a full bathroom, workshop space, extra-high ceilings, RV garage area, and an adjacent large RV port. Whether you have recreational vehicles, boats, classic cars, hobbies, or need extensive storage, this property offers room for it all. Located just a moment from Silcoos Lake and Darlings Marina, outdoor recreation is right at your doorstep. Enjoy easy access to boating, fishing, hiking, and the Oregon Dunes, while being just minutes from the beach and Florence's historic Old Town District with its shopping, dining, and waterfront attractions. This versatile, one-of-a-kind property combines privacy, quality craftsmanship, and unmatched garage and RV amenities in one of the Florence area's most desirable locations. A rare opportunity to own a truly exceptional South Lakes property with space for everyone. **\$949,000.** CB#12984/MLS#329613030



**COLDWELL BANKER** | COAST REAL ESTATE

"We're next to the bridge"  
100 Hwy 101 (541) 997-7777  
Florence, OR 97439 cbcoast.com

## POLICE

From Page A2

occurring. Officers arrived in the area but heard no evidence of a party occurring.

### MONDAY, JUNE 29

At 8:44 a.m., a caller reported losing their wallet somewhere in Old Town.

At 9:17 a.m., officers responded to the 700 block of Highway 101 for a reported vehicle crash. Officers arrived to find the rider of a scooter lying in the roadway. The rider was taken to the ER for treatment. Witnesses told officers that the scooter hit a bump, causing the accident.

At 10:11 a.m., a caller reported that a bag of property was taken from his front porch in the 100 block of Outer Drive.

At 7:08 p.m., officers responded to the 2400 block of Highway 101 for a vehicle that had broken down in the drive-through of a business. Officers helped the owner push the vehicle from the drive-through.

To claim lost or recovered items stored at the police department, call 541 997- 3515

# Salute to the U.S. Coast Guard



**National U.S. Coast Guard Day is Aug. 4, 2026**

**Deadline: July 17, 5pm**  
**Publishes: July 29**

**Be part of this guide showcasing the Coast Guard's service on the Oregon Coast**  
**Our salute will be featured in five Oregon newspapers and their websites**

**To reserve advertising space contact Gary Winterholler**  
Direct line: 541-902-3529 | Cell: 509-216-1658  
gwinterholler@countrymedia.net

**SN Siuslaw News**  
www.thesiuslawnews.com

**The World**  
www.theworldlink.com

**DON'T FORGET TO RECYCLE**

## CHIEF

From Page A1

room on June 30, Schick was joined by family, staff, fire and medical responders, and other retired fire personnel, as well as Florence Police Chief John Pitcher and Lieutenant Len Larson.

Newly sworn Chief Rob Chance said Schick has shown an unwavering commitment to service in his 32-year career.

"He's helped lead this organization through many challenges, growth, change and consolidation, and we are strong because of his leadership," Chief Chance said. "He has been a mentor to many people, including myself... On behalf of everyone here, thanks for your leadership, friendship, and dedication. Congratulations on



**New WLFEA Chief Rob Chance notes that Schick was his mentor in emergency service.**

an outstanding career and well-deserved retirement."

Schick opened by thanking everyone for coming and noting that he began as a volunteer firefighter in Colorado 32

years ago. After becoming a chief officer and coming to Florence from the Puget Sound islands area, Schick was selected as the last fire chief of Siuslaw Valley Fire and Rescue,



**Retiring WLFEA Chief Michael Schick reflects on his 32 year career. Tony Reed photos.**

the last director of the Western Lane Ambulance District, and the first WLFEA Chief.

"Although I came here to unite the districts into one entity, and that was our plan, the State of Oregon had other ideas," he said. "I think the model we ended up with is certainly something we can

live with, and regardless of where we wanted to end up, I'm content with the outcome."

After thanking the board, department, and his family, Schick thanked Chief Chance "for making my decision to retire so much easier, knowing the future of WLFEA will be in his hands."

"To my current firefighters, medics, and staff, thanks for your help, and I know you'll continue to support Chief Chance as you supported me."

Although the ceremony made his retirement official, Schick will continue to perform fire marshal inspections for the department on a part-time basis.

## LODGING

From Page A1

spending to structural balance. We've gone from depleting reserves to building reserves. We've gone from having no financial policies to having financial policies. We now have a 20 percent reserve in the general fund. That is a new thing that is based on the Government Finance Officers Association. [The] benchmark best practice is to have a 20% reserve, and we have standardized all of that throughout our reserves."

He said the county has increased its bond rating twice since 2014, but said as the county's financial officer, he's worried about risking financial stability.

## TLT FOR PUBLIC SAFETY?

Christine Moody, the county budget and financial planning manager, explained that in 2026 the Oregon legislature authorized up to 50% of post-2003 transient lodging taxes to: fund city or county services, whether emergency or non-emergency services, provided directly by the city or county or by a special district in lieu of the city or county.

Mokrohisky said he has repeatedly asked that if the legislature approves using TLT for non-tourist operations, it be used to support public safety. He said the intention has never been to turn the lodging industry against public safety, and wished that using TLT funds for public safety was not a consideration before the board.

"I fully respect and understand the concerns expressed here today about the decision made by the board three years ago, and I think it's also important to recognize the environment we're in today and what has happened over the past three years has changed," He said. "This was a bridge; this was not a one-time use of funding for ongoing operations without a plan. The board has specifically asked for, until we can get to a place where we can engage in a long-term solution with the Community, we need a bridge to be able to continue to fund rural patrol for the next two years."

## DISCUSSION

District 4 Commissioner Pat Farr said that while he has always trusted Mokrohisky and Moody when it comes to the

county's budgeting, he felt it should be done within the policies established by the Board that previously earmarked TLT funds for tourism generation.

Noting his own experience with TLT in the state legislature, Eugene City Council, and school board, Commissioner Farr said he understands the strict direction not to use TLT funds outside of tourism.

He instead suggested reducing the General Fund and using money from the Road Fund to cover the budget without using TLT funding.

Commissioner Laurie Trieger said that in reviewing all relevant history and information, she found it frustrating to be forced to make a decision at what she called the 11th hour, after months of work and having already gone into the process.

She said it was good governance when the legislature came up with ways for local jurisdictions to be more flexible with tax funds for core services.

"To set that opportunity aside and dip into our seed corn [reserves] feels really irresponsible." She said the matter was not about all TLT funds but "a discussion of a portion of a portion."

Referring to the Eugene

winter sports center construction proposal, Trieger said the county has engaged in a good faith effort to look at its feasibility.

"But there is currently no actual project," she said.

District 5 Commissioner Heather Buch said that without a viable plan in place to replenish reserves, the rest was questionable. She added that she supports the TLT and lodging industry and is trying to minimize impacts to it.

Commissioner Buch proposed discontinuing individual discretionary commissioner accounts of \$12,000 each, totaling \$60,000, and putting them in the general fund for those purposes.

"I'd do that because we are in a very tight budget space," she said. "We all need to contribute to the issues. We have expressed in the past that we have used those for good intentions, and continue to do so, but we are seeing people's jobs at stake here."

After being voted down, Buch proposed using some non-committed reserves to minimize the impact on TLT funds, had they been used.

After some procedural and other discussions, the board also voted that

down.

Commissioner Farr then motioned to spend the general fund reserve down to 18.5 percent and fill the balance with money from the Road Fund Reserve.

That motion failed, kicking off a series of unsuccessful motions before one stuck.

Moody read Farr's motion, saying it will eliminate the transfer from the TLT reserves, fund the first year of the Sheriff's rural patrol using \$1.99 million, the courthouse work at \$1.7 million, and dip into unallocated general fund reserves, which would put the general fund reserves at just below 20 percent.

Commissioner Trieger said the motion would essentially preserve TLT funds for a project that does not yet exist.

Commissioner Buch said she supports the motion, although it leaves issues for the board to tackle in the future.

The motion passed 4-1 with Trieger dissenting. Following the decision, the board unanimously adopted the 2026/27 county budget as previously amended.

## TOURISM PAYBACKS

Hannigan's letter pointed out that Florence generates the third-highest

Transient Lodging Tax revenue in Lane County, behind only Eugene and Springfield.

"With a population of fewer than 10,000 residents, Florence consistently outperforms every other Lane County destination on a per-capita basis," she wrote. "Tourism is Florence's primary economic engine, supporting local businesses, jobs, wages, and public services. West Lane County visitors generate \$285.4 million in annual economic impact,

\$81.3 million in earnings, and support 2,420 jobs."

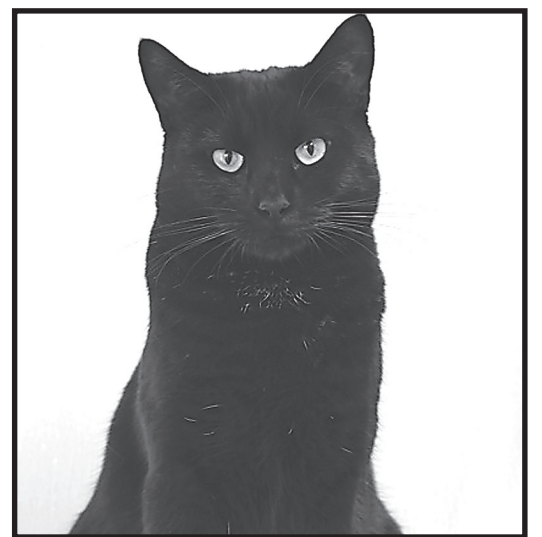
The letter, written before the board decision, asked that the board retain TLT funding to create lasting financial returns.

"Using these dedicated tourism dollars for unrelated purposes may address a short-term funding challenge, but it does not create new revenue, new visitors, new jobs, or new economic activity," Hannigan wrote. "Investment in tourism infrastructure does."

**Come take a look at our ever changing inventory!**

**Sean Hummel, Sales & Finance**  
**Johnston Motor Company**  
 Since 1939  
 2150 Hwy. 101 • Florence  
 (541) 997-3475

## Pet of the Week



## SPORT

Sweet, shy Sport just can't catch a break. He is the MOST docile cat in the cattery, so he's often bullied by other cats. It is heartbreaking to watch. We just want Sport to find a home with another peaceful cat, or as the only cat where he can be adored and loved. This is not because Sport is the problem - he is just so gentle and won't stand up for himself. Come see why he's truly everyone's favorite cat!

If you would like to meet them or any of their friends, please visit us at:  
**OREGON COAST HUMANE SOCIETY**  
 2840 Rhododendron Drive • Florence • 541-997-4277  
 www.oregoncoasthumanesociety.org  
 Shelter hours are 10am until 5pm • seven days a week.

*This message brought to you by:*

News and views that define our community.

**SN Siuslaw News**

Print, Digital, Mobile and More  
 thesiuslawnews.com



FLORENCE REGIONAL ARTS ALLIANCE

**FRAA ART CENTER**  
 120 Maple Street  
 Phone: 541-997-4435  
 Hours Open: Mon-Sun 11 am - 5 pm

**FRAA CREATIVE CENTER**  
 1458 1st Street

## Classes, Workshops &amp; Events

July 2026

**Watercolor - Florals w/ Peggy Ross**  
 Introduction to flower painting including brush techniques, shapes, color mixing.  
 Wednesdays, July 15, 22 & 29, August 5,  
 10:00am-12:00pm. Cost \$150 for FRAA members, \$190 for non-FRAA members. \$10 material fee. Supply list available.

**Z.I.A. Zentangle Inspired Art with Susan Smith**  
 Introduction to creating "Art" with "tangles."  
 Monday, July 20, 10:00am-12:00pm. Cost \$45 for FRAA members, \$55 for non-FRAA members. All supplies provided.

**Gel Plate Printing Techniques with Greta Olivias**  
 Tuesday, August 18, 10:00am-12:00pm. Learn to use a gel plate to create monoprints for display, collage, cardmaking. Cost \$50 for FRAA members, \$60 non-FRAA members. Students to bring own gel plate and brayer. All other supplies provided by instructor.

**Expressive Color in Plein Air with Scott Gellatly**  
 Explore fundamentals of plein air painting with focus on color, light, atmosphere and emotion.  
 Wednesday/Thursday, September 16 and 17, 8:00am-5:00pm. \$350/person.

**Poetry 1st Tuesday Open Mic**  
 Tuesdays, 7:00pm in person and Zoom at FRAA! Doors open at 6:45 pm. Next up: July 7th.

**Draw Together with SCWBI**  
 Free meet-up hosted by FRAA and the Society of Children's Writers & Book Illustrators offering artists the opportunity to meet, share work and ideas. 4th Friday of each month, 5-7 pm. Next one, August 28th. No meet in July.

**Taste of Art Wine Festival and Juried Art Show**  
 Join us Saturday, July 25, 11am-6pm, and Sunday, July 26, 11am-4pm at the Florence Events Center. This event features vendor art booths, wine tasting, and a juried art show. Free for all to attend. Small fee for wine tasting.

**Glass Mosaics and Traditional Stained Glass On-going Classes w/ Charla Stickland**  
 Create a glass mosaic piece to hang or a stained glass piece based on your level using lead and zinc came. Work at your own pace. Saturday, 10:00am-12:00pm. \$100 for mosaic or simple stained glass piece, \$120 non-FRAA member, \$200 for in depth piece FRAA members, \$240 for non-FRAA members. All supplies provided.

**Oil Painting with John Leasure**  
 Saturdays 9:00am-12:00pm and Tuesdays 8:30-11:30am. No experience required. Contact: 541-991-2754 or [jleasure@hotmail.com](mailto:jleasure@hotmail.com) for details/fees.

**Open Studio Fridays! @ FRAA**  
 No registration required. Drop-in, bring your materials, and create. All artistic mediums welcome. Every Friday, 12:00-4:00pm.

**Fiber Open Studio, Thursdays**  
 No registration required. Thursday, 10:30am-12:30pm.

**All Classes and Workshops**  
 Register in person, via phone, or online at [fraaoregon.org](http://fraaoregon.org). Payment required when registering. **All classes and open studios are at FRAA Creative Center.**

For more information about classes, visit [fraaoregon.org](http://fraaoregon.org). To register for classes, please call or visit FRAA Art Center on Maple Street. All classes held at FRAA Creative Center (7/1/26)



*"We're next to the Bridge"*  
100 Hwy. 101, Florence, OR



**COLDWELL  
BANKER**  
**COAST REAL ESTATE**

**541-997-7777**

Servicing Florence Since 1956

**NEW LISTINGS AND UPDATES FOR THE WEEK OF JULY 8, 2026**

**83224 CLEAR LAKE RD.**

**NEW**

Best of country living on 1.35 acres in the south lakes area. Spacious and comfortable home. 3 Bed/3 Bath, 2129 SF.

**\$569,000**

**88082 LEWARD DR.**

**NEW**

Breathtaking woodwork, classic arched doorways and many high end touches. 3 Bed/2.5 Bath. 1904 SF.

**\$735,000**

**OPEN HOUSES**  
July 11th • 11am - 2pm - Light Refreshments

**1610 38TH LOOP**

Original owners of 2 story home in popular neighborhood. New carpet & fresh paint. 9' ceilings. 3 Bed/2.5 Bath, 1900 SF.

**\$539,500**

**1630 38TH LOOP**

Beautiful home comes w/ versatile den or office. Fully fenced backyard. 1 Bed/1.5 Bath, 1412 SF.

**\$454,900**

**9959 SWEET CREEK RD**

Stunning 1587 SF riverfront home + 588 SF remodeled income producing bungalow. Brand new Deep water dock.

**\$850,000**

**WOOD LAKE WAY S.**

Quality craftsmanship and custom features throughout. Designed & built by Brian Lacouture. 3 Bed/2 Bath, 2442 SF.

**\$875,000**

**87997 KELSIE WAY**

**PRICE REDUCED**

Heceta South beauty. Fireplace, Skylights and slider to deck. Hardwood floors in kitchen. Raised beds and greenhouse. 3 Bed/2 Bath, 1724 SF.

**\$635,000**

**1445 YEW ST.**

Coastal Highlands home has received a full make over. All work has been done-now it's your turn to enjoy! 3 Bed/2 Bath. 1526 SF.

**\$459,900**

**84619 EAST LAKE DR.**

NEW Craftsman style home w/ custom features on .82 parcel. Covered deck & fireplace. Steps away from Woahink Lk & boat launch. 3 Bed/2.5 Bath, 2244 SF.

**\$772,000**

**5360 BUCKSKIN BOB**

Charming lakefront cabin on .56 acre with boat dock! All new fixtures, flooring & paint. 3 Bed/2 Bath, 1560 SF.

**\$699,000**

**1021 PRESTWICK CT.**

Spacious cape-cod style cottage in gated Golf Course community. Upstairs bonus room w/ a half bath. 3 Bed/2.5 Bath, 2367 SF.

**\$739,000**

**146 42ND WAY**

Ideally situated on large lot with very private backyard. Designed for comfortable living. 3 Bed/2 Bath, 1782 SF

**\$443,000**

**514 LEMWICK LANE YACHATS**

**PRICE REDUCED**

3 story home w/ magnificent blue water views. Expansive living area. Close to the 804 walking trail. 2 Bed/3.5 Bath. 3152 SF

**\$935,000**

**15 SEA WATCH CT.**

Waterfront living on the Siuslaw River. Floor to ceiling windows. Propane generator for year-round peace of mind. 4 Bed/3.5 Bath, 3399 SF.

**\$1,329,000**

**87660 SALTAIRE ST.**

Idlewood beauty on .49 acre. 19x60 paved parking area. New roof 2 yrs ago. 2 sheds and bonus Bocce ball/putting green. 3 Bed/2 Bath, 1837 SF.

**\$675,000**

**1340 9TH ST.**

Lots of natural light in desirable end-unit condo. 2 assigned parking spaces & exterior storage. 2 Bed/1 Bath, 1000 SF.

**\$269,000**

**5096 WOOD LAKE WAY**

Wooded & private Heceta South home w/add'l lot available. 3 Bed/2 Bath, 1822 SF.

**\$619,000**

**83391 SOUTH COVE DR.**

Spacious Pacific NW contemporary style. Amazing center atrium. 1 level home. 4 Bed/3.5 Bath, 4224 SF.

**\$1,220,000**

**2235 10TH ST.**

Mid-Century classic w/space for everyone. 4 Bed/3 Bath, 2348 SF.

**\$499,000**

**LOT 17 SHORELINE DRIVE**

**NEW**

Shelter Cove Riverfront 1/2 acre lot. All underground utilities available.

**\$289,000**

**89366 DAHLIN RD**

Coveted Mercer lakefront peninsula w/dock on 1.6 ac. 3 Bed/2 Bath, 2236 SF.

**\$1,250,000**

**5323 LEAVITT LP.**

Beautiful waterfront retreat on Woahink Lk. Expansive windows. Multiple outdoor living spaces. 3 Bed/3 Bath, 2450 SF.

**\$1,200,000**

**112 SAILOR LANE**

Cozy and well-loved travel trailer in Coast Village. Enjoy all the amenities of this popular location.

**\$220,000**

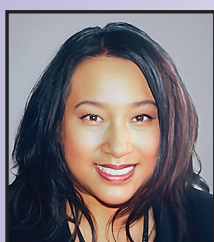
**18 MARINERS LANE**

Immaculate 3 Bed/2.5 Bath, 1496 SF Mariners Village. New roof and paint. RV parking.

**\$492,500**



**ANDY JOHNSON**  
Principal Broker/Owner



**ALVA BRACEY**  
Broker



**ARIC SNEDDON**  
Broker



**DANI FLESCHER**  
Broker



**JACK JOHNSON**  
Broker



**JOHN BARNETT**  
Broker



**JUSTIN YOUNG**  
Broker



**LYNNETTE WIKSTROM**  
Broker



**MISSY JOHNSON**  
Broker



**RANDY PAREDES**  
Broker



**SADIE CLARK**  
Broker



**SAM JOHNSON**  
Broker



**SHIRLEY HUNT**  
Principal Broker



**WANDA JOHNSON**  
Broker



Check out our Website @ [cbcoast.com](http://cbcoast.com) New Search Features, Videos and More. See ALL of Florence's Listings.





**JIM HOBERG,**  
 ABR, ABRM, CRS,  
 GRI, SRES, GREEN  
*Broker/Owner*  
 1870 Highway 126,  
 Florence, OR 97139  
 sales@wcreal.com  
 rentals@wcreal.com

**541.997.7653**  
 TOLL FREE 1-866-967-7653  
 VISIT US ONLINE AT WWW.JIMHOBERG.COM OR WWW.WCREAL.COM

**WEST-COAST  
 REAL ESTATE  
 SERVICES, INC.**

## Tide Table

Siuslaw River Entrance saltwaterfishing.com

**WEDNESDAY, JULY 8**

Low .....1:16 a.m.....1.1  
 High.....7:08 a.m.....4.7  
 Low ..... 12:32 p.m.....1.9  
 High..... 7:10 p.m.....7.2

**THURSDAY, JULY 9**

Low .....2:23 a.m.....0.4  
 High.....8:38 a.m.....4.6  
 Low ..... 1:32 p.m.....2.6  
 High..... 8:03 p.m.....7.5

**FRIDAY, JULY 10**

Low .....3:29 a.m.....-0.3  
 High.....10:04 a.m.....4.8  
 Low ..... 2:40 p.m.....3.1  
 High..... 9:01 p.m.....7.8

**SATURDAY, JULY 11**

Low .....4:30 a.m.....-1.0  
 High.....11:16 a.m.....5.2  
 Low ..... 3:51 p.m.....3.3  
 High..... 10:01 p.m.....8.2

**SUNDAY, JULY 12**

Low .....5:27 a.m.....-1.6  
 High..... 12:15 p.m.....5.6  
 Low ..... 4:58 p.m.....3.2  
 High..... 10:59 p.m.....8.4

**MONDAY, JULY 13**

Low .....6:20 a.m.....-2.1  
 High..... 1:06 p.m.....6.0  
 Low ..... 5:59 p.m.....3.0  
 High..... 11:55 p.m.....8.6

**TUESDAY, JULY 14**

Low .....7:09 a.m.....-2.3  
 High..... 1:53 p.m.....6.3  
 Low ..... 6:57 p.m.....2.6

**WEDNESDAY, JULY 15**

High.....12:49 a.m.....8.5  
 Low .....7:54 a.m.....-2.3  
 High..... 2:36 p.m.....6.5  
 Low ..... 7:52 p.m.....2.3

**THURSDAY, JULY 16**

High.....1:42 a.m.....8.1  
 Low .....8:37 a.m.....-2.0  
 High..... 3:18 p.m.....6.7  
 Low ..... 8:46 p.m.....1.9

**FRIDAY, JULY 17**

High.....2:34 a.m.....7.5  
 Low .....9:17 a.m.....-1.5  
 High..... 3:58 p.m.....6.9  
 Low ..... 9:40 p.m.....1.6

**SATURDAY, JULY 18**

High.....3:27 a.m.....6.8  
 Low .....9:56 a.m.....-0.8  
 High..... 4:37 p.m.....7.0  
 Low ..... 10:36 p.m.....1.4

**SUNDAY, JULY 19**

High.....4:23 a.m.....6.0  
 Low ..... 10:35 a.m.....0.1  
 High..... 5:15 p.m.....7.0  
 Low ..... 11:36 p.m.....1.3

**MONDAY, JULY 20**

High.....5:23 a.m.....5.2  
 Low .....11:13 a.m.....1.1  
 High..... 5:54 p.m.....6.9

**TUESDAY, JULY 21**

Low .....12:39 a.m.....1.1  
 High.....6:31 a.m.....4.6  
 Low .....11:55 a.m.....2.0  
 High..... 6:36 p.m.....6.8

**WEDNESDAY, JULY 22**

Low .....1:45 a.m.....0.9  
 High.....7:53 a.m.....4.3  
 Low ..... 12:45 p.m.....2.8  
 High..... 7:23 p.m.....6.7

**THURSDAY, JULY 23**

Low .....2:50 a.m.....0.7  
 High.....9:28 a.m.....4.4  
 Low ..... 1:47 p.m.....3.4  
 High..... 8:16 p.m.....6.6

**FRIDAY, JULY 24**

Low .....3:51 a.m.....0.4  
 High.....10:49 a.m.....4.7  
 Low ..... 2:58 p.m.....3.7  
 High..... 9:13 p.m.....6.7

# Trap Team excels in State

**Coach SEAN GRUNDON**

Please join us in celebrating the incredible achievements of the Siuslaw Trap Team, who braved the elements this past weekend to bring home major victories from the State Tournament in Bend!

Despite facing brutal, freezing conditions—including heavy rain and biting winds—our 19 student-athletes showed true grit, dominating the field and securing team victories in both divisions.

### TEAM ACHIEVEMENTS

Novice Division

Champions: For the third consecutive year, the Siuslaw Novice Team successfully defended their state title! Junior Varsity State Champions: In a thrilling, down-to-the-wire battle, our JV team pushed through to claim the state title by a razor-thin margin of just 4 points!

Individual Standouts While every athlete contributed to this historic weekend, a few remarkable individual performances deserve a special spotlight:

Auley Steventon (Novice): Tied for 1st place in the Novice

Division with an incredible score of 86/100 clays broken! Due to a reverse-run tiebreaker, he officially took home the 2nd place trophy. Macie Moore (JV): Led the JV squad with a phenomenal 88/100 targets destroyed, earning 2nd place for JV females and 4th place overall in the division. Lily Clemons (Novice): Delivered a stellar performance to capture 3rd place among Novice females with a score of 74/100. Lastly Billy Grable, our only Varsity Level athlete who led the team with 89/100 targets broken!



# Siuslaw senior signings celebrated with event

**Will LOHRE**  
*Siuslaw News*

Some of Siuslaw's super seniors are set to continue their sporting careers at the next level. In celebration of their accomplishments, the Siuslaw Athletic Booster Club held its second annual signing event at the high school.

It was a night to commemorate not only the journey to come, but all the hard work the outgoing Vikings had put in to that point. A post on the Siuslaw Athletic Booster Club Facebook page stated, "Witnessing the limitless potential of this talented group fills us with immense PRIDE and excitement."

**Students featured in the celebration included:**

- Jozalyn Hulet - Willamette University Golf



**Seniors Mia Snyder, Abby Jones, Will Johnson, and Tom Morgan together at the 2026 SHS Scholarship Night. Photo Courtesy photo from Becky Holbrook**

- Tom Morgan - Willamette University Football and Track & Field
- Mia Snyder - Willamette University Track & Field
- Will Johnson - Willamette University Track & Field
- Kylie Stinger - Walla Walla University

- Volleyball
  - Jacob Mann - Carroll College Football
  - Abby Jones - Bushnell University Track and Field
  - Austin Nunez - Linfield University Cheer
- During their time at Siuslaw High School, each of those athletes made crucial contributions not just on the field or track but also within the community. While the teams and programs they represented will certainly miss them, their legacy at the school lives on, and the community is fully behind them as they take their next strides.

"As these remarkable athletes spread their wings, we're filled with pride and admiration for their growth and accomplishments. May Viking PRIDE fill your hearts forever!! Gotta love it.... we do," the post read.

# Mikaela Siegel rewarded for leap of faith

*Fifth in a series on the Class of 2026 Siuslaw Hall of Fame*

By **DON HUNT**

Siuslaw Hall of Fame inductee, 2023

It took a lot of figurative arm-twisting for Chris Johnson to persuade Mikaela Siegel to run the 100-meter hurdles at the start of the 2013 track season.

Siegel was a freshman, and although she had run cross country the previous fall, she fancied herself mostly as a jumper: high jump, long jump, triple jump.

It was only after Johnson, the Siuslaw head track and cross country coach, made a friendly bribe with

Siegel, telling her she would receive a Vikings T-shirt of her choice if she made it through a hurdles race in Junction City without falling, that she agreed to run the event.

"She stumbled over one of the hurdles but ran great," said Johnson. "We had ourselves a new hurdler."

The 2026 Siuslaw Sports Hall of Fame induction is Friday, Aug. 21, in the Siuslaw High School main gym. Doors open at 5 p.m., ceremony at 5:30. Admission is free. A donation to Siuslaw Athletic Booster Club is encouraged.

One of the best in school history, it turns out. By the time Siegel graduated from Siuslaw High in 2016, she was a

See **HOF**, Page B2



**Layne Morrill, Left to Right: Cleo Goss, Rick Colvin, Rianna Merriman, Steve Seals, Butch Hovendick, Kathryn Damon-Dawson, Ed Larsen** Missing were the two who made large 3D sculptures: **Daniel Burgess and Giuliano Marchetti** Art selected for new housing and early learning center

# Art selected for new housing and early learning center

As the grand opening of the new Elm Park Apartments and Early Learning Center approaches, Florence Regional Arts Alliance (FRAA) and BeauxArts Fine Art Materials have announced the selection of art pieces that will be on permanent display within the project's communal complex.

Elm Park — a project

of Our Coastal Village Inc. providing affordable modern living, child care, and early learning — chose art pieces that reflected its mission of creating vibrant community living and enriching the lives of its residents and visitors. The collection showcases a diverse range of local artists, each piece chosen to evoke emotion, spark

conversation, and foster a sense of connection within the community.

Layne Morrill, President of Our Coastal Village Inc., stated, "The submissions were awesome and the choices were hard. It is a pleasure to honor local artists in our community spaces."

See **ART**, Page B2



Discover Your Current Value

## LISTED TO SOLD

80% of Buyer's for Florence Come From Out of Area - Your Property Needs a Strong Online Presence

- Professional Photography
- 360°Virtual Tour
- Custom Floor Plan

- Property Individual Website
- Abundant Online Advertising
- Seller's Home Warranty

Lane County Top Producer - Residential Listing Specialist

**LauraWilson@Windermere.com** **www.FlorenceORBroker.com**



**Laura Wilson**  
 541-999-9688



**Shopee LOCAL**  
#MyFlorence  
Shop. Eat. Support.



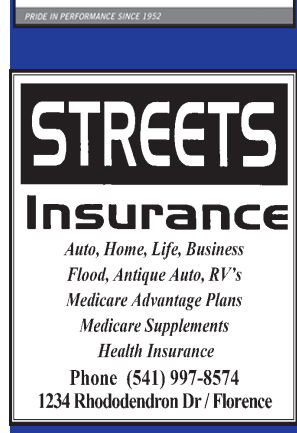
**Alva Bracey**  
Broker  
Your goals are my top priority. Let's get together!  
Call, Text or Email  
cell: 541-505-1180  
Alva@CBCoast.com

541-997-7777  
100 Hwy. 101,  
Florence, OR  
COLDWELL BANKER  
COAST REAL ESTATE



**LES SCHWAB TIRE CENTERS**  
Tires • Brakes • Shocks  
Alignments

4325 Highway 101  
Florence, OR 97439  
**541-997-7178**



**STREETS Insurance**  
Auto, Home, Life, Business  
Flood, Antique Auto, RV's  
Medicare Advantage Plans  
Medicare Supplements  
Health Insurance  
Phone (541) 997-8574  
1234 Rhododendron Dr / Florence

**SAVE. SHOP**



**WALLY'S**  
Septic Tank Pumping

\$25.00 off Pumping or  
\$10.00 off a Service Call

Call Today to Schedule an  
appointment  
Call 541-997-8885  
Payment must be made at the time of  
service to receive discount.  
Discount does not apply to credit card or  
mailed payments.  
Coupon expires - July 31, 2026



**Bud's Upholstery**

10% off  
Materials on  
any new job

When you present this coupon.  
expires July 31, 2026

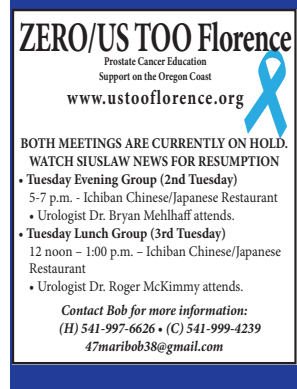
**541-997-4856**  
87637 Hwy. 101 N, Florence



**OREGON COAST HUMANE SOCIETY**

The Thrift Shop  
July, 2026  
Orange Tags are  
50% off!  
Hours:  
Mon-Sat: 10am - 5pm  
Sun: 11am - 5pm  
(541) 997-5705  
1193 Bay St., Old Town Florence

**SUPPORT**



**ZERO/US TOO Florence**  
Prostate Cancer Education  
Support on the Oregon Coast  
www.ustoooflorence.org

BOTH MEETINGS ARE CURRENTLY ON HOLD.  
WATCH SIUSLAW NEWS FOR RESUMPTION

- Tuesday Evening Group (2nd Tuesday)  
5-7 p.m. - Ichiban Chinese/Japanese Restaurant
- Urologist Dr. Bryan Mehlhoff attends.
- Tuesday Lunch Group (3rd Tuesday)  
12 noon - 1:00 p.m. - Ichiban Chinese/Japanese Restaurant
- Urologist Dr. Roger McKimmy attends.

Contact Bob for more information:  
(H) 541-997-6626 • (C) 541-999-4239  
47maribob3@gmail.com



**Cross Road Assembly of God**

Sunday 9:00  
1st Service in person  
Sunday 11:00  
2nd Service in person & Online  
**Children's Church**  
(0yrs-12yrs)  
in person & Online  
Corner of 10th & Maple  
**541-997-3533**



# Community Briefs

## Call to Art for August Chamber Show

Theme Summer Fun August is FRAA's month to display in the Chamber. Our theme is Summer Fun! We need about 18 2D pieces and 5 3D pieces where 3D has to be big enough not to slide into a purse or pocket. Drop off will be on Friday July 31st 10:30-11:30 am at the Chamber. It really must have a wire on it as their system cannot handle any other kind of hanger.

## City Club hosts Florence ORganizes July 9th

During its monthly forum this July 9th, the

City Club of Florence welcomes Florence ORganizes (FOR), who will be represented by FOR Co-Coordinator, and Lane ESD Board Director, Nora Kent.

Kent will speak about FOR's local advocacy as a human dignity group, as well as its community-building mission in the Siuslaw Region and along the Oregon Coast, among other topics.

In June, FOR co-sponsored a local Juneteenth celebration with Siuslaw Vision, and earlier in the year held events in Florence commemorating Martin Luther King Day and Earth Day. The group hosts coffee conversations with the public at The Bridgeport Market every 1st and 3rd Friday of the month from 10am to 11:30am.

The City Club is a non-partisan, civic discussion group that meets on the 2nd Thursday of each

month at 1:30pm in the Bromley Room of the Siuslaw Public Library. Each month features a different guest speaker, who answers questions from the audience following their presentation.

City Club meetings are free and open to the public. Meetings are later broadcast on KXCR-FM 90.7 community radio. The Siuslaw Public Library does not sponsor the City Club or endorse the views of guest speakers.

## Get to know friends of Florence Van Fans

The Van Fans are a group of volunteers who meet once a month with the

The goal of raising money and donations to keep the Cancer Bus in operation. The bus is

a free service Mon-Thru Friday to transport patients to Eugene/Springfield for radiation treatments.

Our next fundraiser is The Annual Ice Cream Social Florence Event Center on the Patio 715 Quince St July 18th 2026

The next monthly meeting / Luncheon is Thursday July 2nd Shorewood Retirement Residences 1451 Spruce St. Florence

Check in-11:30am

Lunch is \$10 and starts at noon/gratuities accepted

New members and guests are welcomed to join the group of volunteers to learn things the VanFans do to support the Cancer Bus transporting patients to and from Eugene and Springfield for radiation treatments

For more information call Sharon Gelmstedt 541-991-3209

## Book sale this week

On Saturday, July 11, the Friends of the Siuslaw Library will be hosting a ONE DAY BOOKSALE to benefit the Siuslaw Public Library.

Wondering how to fill the lazy, hazy days of summer? Read a book! Watch a DVD! Gather with family and friends for a puzzle night! WE HAVE THEM ALL! Plus, a locally designed book/beach bag to carry everything. (\$10) The doors to the Bromley Room open at 10 am, until 3 pm on Saturday, July 11th. Paid members of the Friends are welcome at 9 am.

Remember, this is a ONE DAY ONLY SALE. Do not miss out! Our dedicated volunteer members will greet you and help you in your search for summertime fun!

## ART

From Page B1

Initially, the call for art was intended for only a few selected works for display. But as Elm Park's vision expanded in scope, more works were selected in order to showcase the full caliber of local art and contribute to Florence's vision of economic development through the arts.

"We are incredibly proud to support local artists and showcase their work on such a prominent platform," said Jo Beaudreau of BeauxArts, who helped FRAA with the call for art. "The artists' creativity adds a unique flavor to the housing complex and early learning center, making it not just a place to live but a place to thrive — now, and for years to come."

Art selected includes:

Daniel Burgess - 3D Steel/Steel and Stone Sculptures, Rick Colvin - Photography, Kathryn Damon-Dawson - Painting, Cleo Goss - Painting, Butch Hovendick - Photography, Ed Larsen - Metal on Wood, Giuliano Marchetti 3D Steel Sculpture, Rianna Merriman - Painting, Steve Seals - Painting

"It is an honor for FRAA to be able to support Layne and his

Elm Park project as he adds art to beautify the space," adds Tracey Miller, President of FRAA. "Layne has provided such a positive impact on Florence through what he has envisioned and built for our community." The reception to honor the selected artists was held on July 1st at Florence Regional Arts Alliance's Creative Center where the artists met with Layne Morrill as he

received the chosen pieces of artwork.

A public dedication of the Elm Park Apartments located at 1051 Greenwood Street, and Elm Park Early Learning Center, located at 1001 Greenwood Street (off Ninth Street near the Justice Center) will take place on August 27th at 2:00 PM, when the new complex and art collection will be celebrated and officially open to the general public.

## HOF

From Page B1

two-time state champion and a seven-time state placer.

"Johnson knew best," said Siegel.

After finishing as the state runner-up in the 100 hurdles as a sophomore in 2014, Siegel was the favorite the following year. She stumbled badly over one of the hurdles in a preliminary race and barely qualified for the finals, but then

dominated the field and won going away in a lifetime best and school record time of 15.5 seconds.

Siegel repeated as the state champion in 2016, clocking 15.61.

The versatile stand-out also placed fifth at

state in the triple jump (33-8½) and seventh in the long jump (16-7¾) in 2016, and seventh in the long jump (16-1½) in 2015. She also ran a leg on the Vikings' 4x400-meter relay team that took fourth in 2015.

"Mikaela is definitely one of the best female track athletes we've ever had," said Johnson, "and she also might be the smartest kid I've ever coached."

Johnson said Siegel used words "that made me wish I had a dictionary in my hands."

Said Siegel: "Johnson was my English teacher, so you can blame him for that."

Siegel's IQ was evident in the classroom. She earned straight A's in high school and college, where she earned a biology degree at Oregon State. She went on to medical school at Oregon Health Science University in Portland and is in her final year of residency, in Klamath Falls.

Siegel will become a family physician this summer.



**Friendship - Fellowship - Fun FAITH DIRECTORY**  
To include your organization in this directory, please call us @ 541-997-3441

**BAHA'I FAITH OF FLORENCE**  
"What is Baha'i, and Why?" 2nd Monday 7:00 PM  
Interfaith Devotions 4th Monday 7:00 PM  
"Reflections on the Life of the Spirit" study group  
Info and meeting location: 541-590-0779  
Zoom link on Facebook: Florence Baha'i Community

**COMMUNITY BAPTIST CHURCH**  
4590 Hwy. 101 N, across from Fred Meyer- 541 997-7418  
SUNDAY SERVICES - Adult Bible Study 9:30 AM; Worship 10:45 AM; High School Youth 7-9 PM  
MID-WEEK- Women's Bible Study-Tuesday 10:00-Noon and Thursday 7:00-8:00PM; Men's Bible Study Thursday 8:00-9:30 AM; Middle School Youth Wed. 7-9 PM.  
Sunday Worship streams live at Community Baptist Church Facebook Page

**CROSS ROAD ASSEMBLY OF GOD**  
Corner of 10th & Maple- 541-997-3533  
Sunday Services 9am  
1st Service in person  
Sunday Services 11am  
2nd Service in person & livestreamed  
Wednesday kids/youth night is at 6:30 NOT Livestreamed.  
https://www.florencecrossroadag.org/church-online  
Other platforms update after the service.  
florencecrossroadag.org  
office@florencecrossroadag.org

**FLORENCE UNITARIAN UNIVERSALIST FELLOWSHIP**  
87738 Hwy 101 at Heceta Beach Road  
RUAUU? Come explore the answer with us.  
Sunday Worship Services ~ 10:00am  
www.florenceuuf.com

**FLORENCE UNITED METHODIST CHURCH**  
2nd & Kingwood • (541) 997-6025  
Sunday worship is at 10:30 a.m.  
Sunday School for adults is at Monday, 10:30 a.m.  
Taizé Prayer Services - 2nd Sunday at 4 p.m.  
Online services at  
www.florenceoregonumc.org  
or find us on Facebook.

**FOURSQUARE CHURCH**  
1624 Highway 101 (next to A&W) — 997-6337  
Pastor George Pagel — Something for the entire family.  
Sunday Service 10:00 am  
Wednesday Bible Study returns this Fall.  
Website: florence4square.com

**NEW LIFE LUTHERAN E.L.C.A.**  
NEW LIFE LUTHERAN CHURCH, E.L.C.A.  
"Serving Christ by serving others."  
21st & Spruce Streets—(541) 997-8113  
Sunday worship is at 10:30 a.m.  
Online services available on our Facebook, YouTube, and website: www.florencenewlifelutheran.org

**PRESBYTERIAN COMMUNITY CHURCH**  
3996 N Hwy 101 541-997-7136  
Internet and in person Sunday Services at 10:30am, Adult Sunday School is at 9:30am.  
Call the church for details.  
All Welcome. Come as you are.

**RELIGIOUS SOCIETY OF FRIENDS (QUAKERS)**  
Quakers in Florence invite you to Worship  
Sundays: 10:45 welcome; 11am Worship; Noon light lunch  
Suite 2285-J next to Beaux Arts in the St. Vinnie's shopping center

**RESURRECTION LUTHERAN CHURCH, L.C.M.S.**  
Worship Services 10 am • Bible Study 9:00 am  
Pastor Steve Waterman  
85294 Hwy. 101 S. — 997-8038  
Facebook.com/ResurrectionLutheranChurchFlorence  
www.puppro.wixite.com/rlcflorence

**ST. ANDREW'S EPISCOPAL**  
Church Welcomes You  
Worship Sun. 10am Wed 11am 2135 19th St.  
541-997-6600 standrewssecretary19@gmail.com  
Labyrinth & Garden daily 8am-5pm  
"Be the change."

**SAINT MARY, OUR LADY OF THE DUNES CATHOLIC CHURCH**  
1.5 miles south of river on Hwy 101 — 997-2312  
Mass Times: Daily: Tue, Wed, Fri 9:00 AM  
Adoration & Confession Fri 9:30-10:30 AM  
Saturday 5:30 PM and Sunday 11:00 AM  
Fr. Amir Welcomes All to Attend

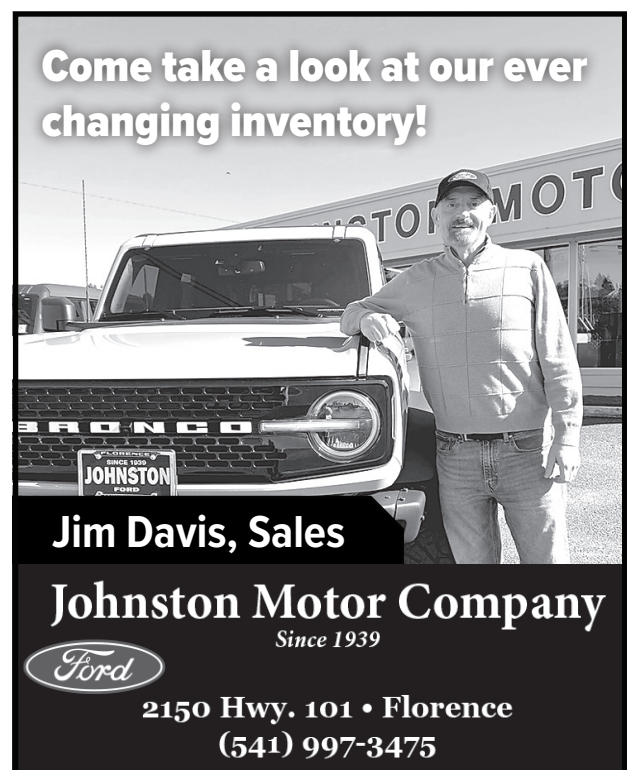
**JOIN US IN WORSHIP** 4 lines, approx 15 words, \$15 a week • 4 week Minimum  
Deadline: Tuesday end of day one week prior



**Buying or Selling? I can help.**

**TR HUNTER REAL ESTATE**  
1749 Highway 101  
541-997-1200

**Vanessa Buss**  
Broker  
541-991-0478



**Come take a look at our ever changing inventory!**

**Jim Davis, Sales**

**Johnston Motor Company**  
Since 1939

2150 Hwy. 101 • Florence  
(541) 997-3475

# Safe driving starts with your attention

**From THE CITY OF FLORENCE**

The Florence Police Department will be participating in a focused speed enforcement campaign aimed at reducing speeding-related crashes and improving roadway safety throughout the community between July 6, 2026, and July 31.

During this enforcement period, Florence Police Officers will conduct increased patrols focused on speeding violations, aggressive driving behaviors, and other dangerous traffic offenses that place

motorists, pedestrians, and cyclists at risk. This enforcement effort is supported through a federally funded traffic safety grant administered by the Oregon Department of Transportation (ODOT) Traffic Safety Office (TSO). Grant funding allows agencies to dedicate additional patrol hours specifically toward traffic safety enforcement.

National traffic safety statistics highlight the dangers associated with excessive speed:

- According to the National Highway Traffic Safety Administration

(NHTSA), [www.nhtsa.gov](http://www.nhtsa.gov), speeding was a contributing factor in 29% of all traffic fatalities in 2023, resulting in more than 11,700 deaths nationwide

- NHTSA reports that speeding has been involved in approximately one-third of all fatal crashes for more than two decades

- Higher speeds reduce a driver's ability to steer safely around hazards, increase stopping distance, and significantly increase crash severity. Even small increases in speed can dramatically increase the likelihood of serious injury or death in a collision

- The National Safety Council, <https://injuryfacts.nsc.org>, notes that speeding not only endangers the speeding driver, but also passengers, pedestrians, bicyclists, and other motorists sharing the roadway

- Florence Police Department encourages the community to drive responsibly.
- Obey posted speed limits.
- Adjust speeds for weather, traffic, and roadway conditions.
- Leave early and allow extra travel time to avoid rushing.
- Stay alert and avoid

aggressive driving behaviors. For more information about Public Safety

in Florence, visit <https://www.ci.florence.or.us/Police>.

**emergence**  
addiction and behavioral therapies

**RECOVERY, FOR THE FUTURE YOU WANT.**

4emergence.com  
541-997-8509

## Siuslaw National Forest implements public use restrictions

*Campfires prohibited outside of developed campgrounds*

Due to unseasonable hot and dry conditions, the Siuslaw National Forest is implementing Stage I Public Use Restrictions beginning Monday, June 29. The Fire Danger Level across the forest remains "MODERATE".

All campfires, charcoal or briquette fires, pellet fires, or any other open fires are prohibited outside of designated recreation sites or campgrounds under a Forest Order.

There are exemptions for sand camping campfires in the Oregon Dunes

National Recreation Area and Sand Lake Recreation Area. Portable cooking stoves and lanterns using liquefied or bottled fuel are allowed as they can be instantly switched off.

Smoking is prohibited except within an enclosed vehicle, building or a developed recreation site. Generators are permitted only in places devoid of vegetation such as paved areas or developed campsites. Motorized vehicles may operate only on designated trails and roads.

Offroad and off-trail driving is permissible within the Oregon Dunes National Recreation Area or Sand Lake Recreation Area as designated by the Siuslaw

National Forest Motor Vehicle Use Map.

The Forest Order will be in place until rescinded. Fire restrictions can change quickly. The public is encouraged to "Know Before You Go" and to check local conditions before visiting forest lands. To report a wildfire, please call 9-1-1. Additional fire information is available on the Siuslaw National Forest website at <https://www.fs.usda.gov/r06/siuslaw/fire>.

About the Forest Service: The Forest Service has brought people and communities together to answer the call of conservation for more than 100 years. Grounded in

world-class science and technology—and rooted in communities—the Forest Service connects people to nature and recreation opportunities. The agency manages 193 million acres of public land, supports the nation's forest industry and energy needs, and operates the largest and most respected wildland fire and forestry research organizations in the world. By providing assistance to state and private landowners and working with Tribes and other partners, the Forest Service also helps steward an additional 900 million forested acres within the U.S.

**WEST COAST REAL ESTATE SERVICES, INC.**

**Myrtle Glen**

**541-997-SOLD (7653)**

**Prices starting \$429,000**

- 25 Attached Single-Unit Dwellings For Sale Now!
- Paved driveways & sidewalks, overflow parking, common space and resident use gazebo.
- First phase of homes nearing completion February 2025.

MLS Listings: 24230994, 24400021, 24318214, 24290679, 24686796, 24024694, 24417443

## WLCF Accepting Scholarship applications

The Western Lane Community Foundation is now accepting applications for Continuing Education Scholarships for the upcoming academic year.

Scholarships are available for students attending traditional four-year colleges, community colleges, and approved trade schools. Students pursuing careers in health care, arts and education are especially encouraged to apply.

Award amounts range from \$1,000 to \$5,000, and applicants are automatically considered for all scholarships for which they qualify. Scholarship criteria vary by fund and may include academic achievement, financial need, field of study, or the educational institution being attended.

The application process includes information about your educational

background, career goals, and financial situation. Applications are being accepted now through July 22.

To learn more and apply online, visit [www.wlcfonline.org/Scholarships.html](http://www.wlcfonline.org/Scholarships.html).

The Western Lane Community Foundation is proud to support lifelong learning and educational opportunities throughout Western Lane County. C WLCF 0708

## Humanity's Journey with Justice, Equity, and Compassion

Following Independence Day in the US and Bastille Day in France, our Sunday program on July 12th will explore how these milestones represent human leaps toward justice and equity. Dr. Ruth Miller will examine the historical context of these movements and their parallels with today's world. By

examining cultural norms across the globe, Dr. Ruth will highlight concrete ways people are actively creating a more compassionate and equitable culture, driving progress toward a new way of living on the planet. Join us Sunday, July 12th. Of course, we'll have music with Christine Frances.

**Florence Unitarian Universalist Fellowship**  
87738 Highway 101 at Heceta Beach Road  
Doors open at 9:30; Service starts at 10:00am  
Everyone is welcome to join us  
For more information, please contact: Sally Wantz ~ [Florence.Unitarian@gmail.com](mailto:Florence.Unitarian@gmail.com)

**Doing Good. Giving Back.**

To include your organization in this directory please call us @ 541-997-3441

Do you part and volunteer today to help support these organizations in our community.

**Peace Harbor Volunteers**

**DOING GOOD . GIVING BACK**  
VOLUNTEER AT PEACEHEALTH PEACE HARBOR MEDICAL CENTER  
Do you have a desire to serve your community? Peace Harbor Medical Center may be the place for you. At Peace Harbor, we strive to provide compassionate, high quality, accessible health care and to promote a healthy community. We value having community volunteers in various aspects throughout the healthcare system.  
For more information and to obtain an application visit the Gift Shop or Front Lobby Desk at Peace Harbor Medical Center at 400 9th Street, Florence, Oregon.

**Us Too Florence**

Saving men one PSA test at a time. "Someone to talk to...who understands!"  
541-997-6626 • [maribob@oregonfast.net](mailto:maribob@oregonfast.net)  
[www.ustooflorence.org](http://www.ustooflorence.org)

**the spotlight**

A weekly roundup of shopping, savings and doings around town.

**Florence HOME FURNITURE**

**Ashley Furniture**

Quality, Style, Selection  
#1 Brand of home furniture in the USA  
Come choose your Sofa Recliner Loveseat Sectional

**SAW SHOP FLORENCE**  
POWER EQUIPMENT SALES & REPAIR - RENTAL CENTER

Call today to reserve your rental equipment located at 1550 6th Street & HWY 101  
Rentals are available on a daily, weekly and monthly basis.  
Call 541-997-2653  
OPEN: MONDAY – FRIDAY 8AM TO 5PM

**HONDA Power Equipment**

Honda Portable generators provide quiet power for camping, RVing, tailgating and more.  
Honda Home generators offer convenient, reliable back up power for outages.  
Honda Work generators are the number one choice in the construction and rental industry.

Florence Saw Shop is proud to be a qualified elite retailer of the Stihl product line.  
Our friendly and Certified Gold Technician is always ready to help you select the equipment that meets your specific needs.  
Your equipment comes fully assembled and ready to use.

**Repair Center**

Have a piece of equipment with a small engine that needs a tune-up, needs rebuilt, or just isn't running like it should?  
Bring it into our small engine repair shop for a quote.  
We also sharpen chains.



July 6, 2026 Posting Date

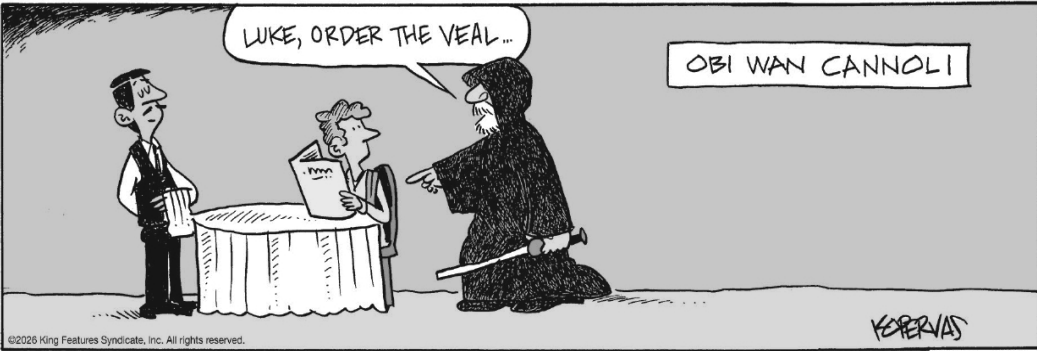
### Amber Waves

by Dave T. Phipps



### Out on a Limb

by Gary Kopervas



### The Spats

by Jeff Pickering



### TIGER

by BUD BLAKE



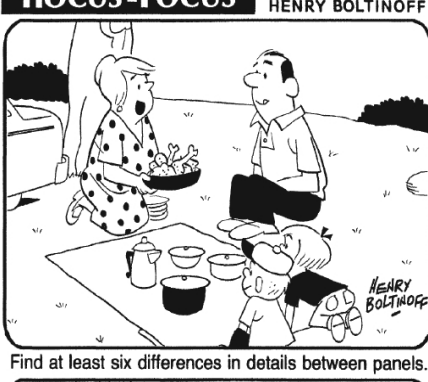
### OLIVE & POPEYE

By Randy Milholland



### HOCUS-FOCUS

BY HENRY BOLTIHOFF



### Just Like Cats & Dogs

by Dave T. Phipps



### CryptoQuip

This is a simple substitution cipher in which each letter used stands for another. If you think that X equals O, it will equal O throughout the puzzle. Solution is accomplished by trial and error.

Clue: K equals L

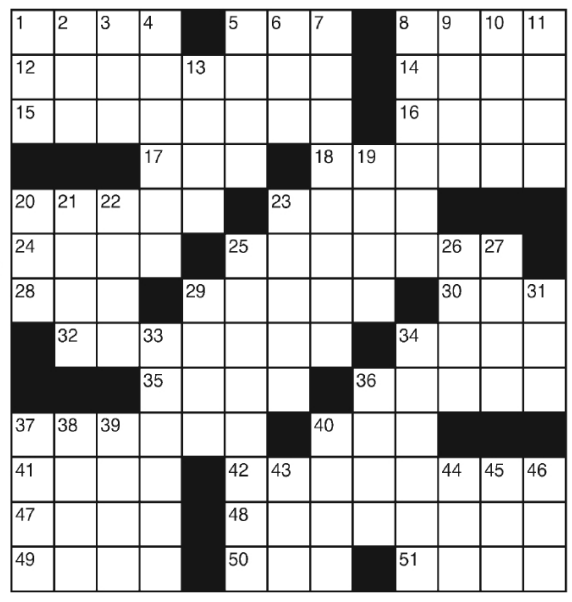
SFDOQX MC FD FKKQXOBI  
 XQFIRBMD CXMN GFKABDO  
 FNMDO RMM NFDL SFBTLKBAQ  
 CKMGQXT: FD FTRQX-XBTA.

©2026 King Features Synd., Inc.

## King Crossword

### ACROSS

- 1 Gas station fixture
- 5 Doo follower
- 8 Rabbit's tail
- 12 Pantene's business
- 14 Peddled item
- 15 Figure out
- 16 "Das Lied von der —"
- 17 Indian lentil stew
- 18 iPod accessory
- 20 Cool veggies
- 23 1504, in old Rome
- 24 Fr. holy women
- 25 Evening affairs
- 28 Bit of ink
- 29 "SNL" segments
- 30 Wager
- 32 Stockings
- 34 Ham's dad
- 35 Resort near Snowbird
- 36 Tubular pasta
- 37 As a whole
- 40 Duo's pronoun
- 41 Hoopster Malone
- 42 Strongman of myth
- 47 Needle case
- 48 Implanted
- 49 Lavish affection (on)



### DOWN

- 1 Third degree?
- 2 Dubai's country, for short
- 3 Amp plug-in
- 4 Lion packs
- 5 Wonka's creator
- 6 "— you awake?"
- 7 Geneticist's study
- 8 Veer
- 9 Sugar or starch, for short
- 10 Language of Pakistan
- 11 Ticked (off)
- 13 Tax prep pros
- 19 Broadcasts
- 20 Chicago winter hrs.
- 21 Beehive State
- 22 High-fat diet
- 23 Kelly of "One Tree Hill"
- 25 Courtroom artist
- 26 Black, in verse
- 27 Penn or Astin
- 29 Missile shelter
- 31 Chance — Rapper

- 33 — Mae (loan offerer)
- 34 Poet Pablo
- 36 Brownish purple
- 37 Scratched (out)
- 38 Post-WWII alliance
- 39 Very dry
- 40 Spheres
- 43 911 responder
- 44 "Bad" cholesterol
- 45 Sushi fish
- 46 Radical '60s gp.

© 2026 King Features Synd., Inc.

### Weekly SUDOKU

5	2	3	4	8		7	9
		3		6	9		
9	4	2			6		8
	1	5	2		8	6	
6		1	3		4		
					5	9	1
		9				8	
6		8	7			5	4
		2	4	5	3		

Place a number in the empty boxes in such a way that each row across, each column down and each small 9-box square contains all of the numbers from one to nine.

**DIFFICULTY THIS WEEK:** ◆

◆ Moderate ◆◆ Challenging  
 ◆◆◆ HOO BOY!

© 2026 King Features Synd., Inc.

### Trivia test

by Fifi Rodriguez

- TELEVISION: What is Walter White's codename in the drama "Breaking Bad"?
- GENERAL KNOWLEDGE: Which month of the year has the fewest letters in its name?
- U.S. STATES: Which state is known as the Prairie State?
- LANGUAGE: What is the British term for a bike's training wheels?
- ASTRONOMY: What is the Earth's only natural satellite?
- FOOD & DRINK: What is a more common name for the fruit sometimes called "alligator pear"?
- MOVIES: What kind of creature is Thumper in the animated movie "Bambi"?
- LITERATURE: What is the name of the python in "The Jungle Book"?
- GEOGRAPHY: Which countries and islands make up the geographic area known as Oceania?
- ANATOMY: What is a more common name for cerumen?

© 2026 King Features Synd., Inc.

### FiveSpot™

Mood Setter

P	A	I	N	T

Redecorate in a way

Luxurious fabric

Impediment to accessibility

Oscar's milieu on Sesame Street

"... so good"

Dentist's admonition

Solve each row by replacing one letter from the answer above or below and scrambling to make a new word. When complete, the top and bottom words will have no letters in common.

FiveSpot is a trademark of Michael McLinden  
 See more at [www.sproutspuzzle.com](http://www.sproutspuzzle.com)

### DOCTOR

Today's Word

3. Wallow; 4. Decoy

1. Proper; 2. Mascot

solution

### SCRAMBLERS

H	S	B	R	U	S
S	T	H	U	R	T
H	S	T	R	A	S
R	A	I	R	S	A
N	I	N	T	I	N
T	A	I	N	T	P

FiveSpot™ solution

### Weekly SUDOKU

8	6	2	4	5	6	3	1	7
3	6	1	8	7	2	9	5	4
4	7	5	9	3	1	2	8	6
2	3	4	6	8	7	5	9	1
6	5	8	1	9	3	7	4	2
7	1	9	5	2	4	8	6	3
9	4	7	2	1	5	6	3	8
1	8	3	7	6	9	4	2	5
5	2	6	3	4	8	1	7	9

Answer

### CryptoQuip

Danger of an allergic reaction from walking among too many daisies like flowers: an asterisk.

answer

10. Earwax
9. The four regions are Australasia (Australia and New Zealand), Polynesia, Melanesia and Micronesia
8. Ka
7. Rabbit
6. Avocado
5. The Moon
4. Stabilizers
3. Illinois
2. May
1. Heisenberg
- Trivia Answers

### King Crossword

Solution time: 22 mins.

Answers

ACROSS

1 GAS STATION FIXTURE

5 DOO FOLLOWER

8 RABBIT'S TAIL

12 PANTENE'S BUSINESS

14 PEDDLED ITEM

15 FIGURE OUT

16 "DAS LIED VON DER —"

17 INDIAN LENTIL STEW

18 IPOD ACCESSORY

20 COOL VEGGIES

23 1504, IN OLD ROME

24 FR. HOLY WOMEN

25 EVENING AFFAIRS

28 BIT OF INK

29 "SNL" SEGMENTS

30 WAGER

32 STOCKINGS

34 HAM'S DAD

35 RESORT NEAR SNOWBIRD

36 TUBULAR PASTA

37 AS A WHOLE

40 DUO'S PRONOUN

41 HOOPSTER MALONE

42 STRONGMAN OF MYTH

47 NEEDLE CASE

48 IMPLANTED

49 LAVISH AFFECTION (ON)

DOWN

1 THIRD DEGREE?

2 DUBAI'S COUNTRY, FOR SHORT

3 AMP PLUG-IN

4 LION PACKS

5 WONKA'S CREATOR

6 "— YOU AWAKE?"

7 GENETICIST'S STUDY

8 VEER

9 SUGAR OR STARCH, FOR SHORT

10 LANGUAGE OF PAKISTAN

11 TICKED (OFF)

13 TAX PREP PROS

19 BROADCASTS

20 CHICAGO WINTER HRS.

21 BEEHIVE STATE

22 HIGH-FAT DIET

23 KELLY OF "ONE TREE HILL"

25 COURTROOM ARTIST

26 BLACK, IN VERSE

27 PENN OR ASTIN

29 MISSILE SHELTER

31 CHANCE — RAPPER

33 — MAE (LOAN OFFERER)

34 POET PABLO

36 BROWNISH PURPLE

37 SCRATCHED (OUT)

38 POST-WWII ALLIANCE

39 VERY DRY

40 SPHERES

43 911 RESPONDER

44 "BAD" CHOLESTEROL

45 SUSHI FISH

46 RADICAL '60S GP.

### SCRAMBLERS

Unscramble the letters within each rectangle to form four ordinary words. Then rearrange the boxed letters to form the mystery word, which will complete the gag!

Precise

PREPOR

Cheerleader

COMATS

Flounder

LOWLAW

Lure

CODEY

It's the oddest sort of pain — it goes away as soon as I see a \_\_\_\_\_!

TODAY'S WORD

### HELLO SUNSHINE

Goodbye Clogged Gutters

Upgrade your gutters this summer! LeafFilter blocks out common debris.

Save up to 35% Off

+ Free gutter inspection, quote good for 1 year

Call 1-855-536-8838

LeafFilter

Save up to 35% Off

Free gutter inspection, quote good for 1 year

Call 1-855-536-8838

\*Promotional offer includes 20% off plus an additional 10% off for qualified veterans and/or seniors. Cannot be combined with other offers. See representative for full warranty details. AP 369900026, AZ 290024402, CA 1929716, CT 180491120, DC 4429925, HI 1, IL 260566978, IA C272730, ID RCE-61904, LA 256644, MA 252392, MD MHC10295, MI 26264488, MN 262600330, MO 262600330, NE 262600330, NH 262600330, NJ 262600330, NY 262600330, NC 262600330, ND 419204, RI 262600330, SC 262600330, TN 262600330, TX 262600330, VA 262600330, WI 262600330, WY 262600330

### The Bath or Shower You've Always Wanted

IN AS LITTLE AS A DAY

\$1,500 OFF\*

PLUS

ZERO Interest, ZERO Payments

financing for 12 Months\*

OFFER EXPIRES 9/30/2026

BATH CONCEPTS AUTHORIZED DEALER

CALL (844) 847-9778

\*Includes labor and product; bathtub, shower or walk-in tub and wall surround. This promotion cannot be combined with any other offer. Other restrictions may apply. This offer expires 9/30/26. Each dealership is independently owned and operated. \*\*Third party financing is available for those customers who qualify/Participating dealers only. See your dealer for details. ©2026 Bath Concepts Industries.

### Audien Hearing

The World's First Hearing Aids With Touchscreen Controls.

No tiny buttons. No apps. No prescriptions.

### Atom X

Call 844-387-1163 to get your 45-day risk free trial.

# Classified Marketplace



LINER ADS: [snclassifieds@countrymedia.net](mailto:snclassifieds@countrymedia.net) • LEGALS: [legals@countrymedia.net](mailto:legals@countrymedia.net)

**105 CLEANING SERVICES**

**FLORENCE CLEANING LLC**  
Licensed, Bonded, & Insured, Provides Consistent, High Quality Residential Cleaning. Call today at 541-999-5033 or Book at [www.florence-cleaning.com](http://www.florence-cleaning.com).

**150 MISC SERVICES**

Audien Hearing. The world's first hearing aid with touchscreen controls. No tiny buttons, apps or prescriptions. 45-day risk free trial. Free shipping. Lifetime support. More than 1.5 million happy customers. Call Audien 1-844-387-1163.  
**DIRECTV OVER INTERNET** Get your fa-

**150 MISC SERVICES**

vorite live TV, sports and local channels. 99% signal reliability! **CHOICE Package**, \$84.99/mo for 12 months. HBO Max and Premium Channels included for 3 mos (w/CHOICE Package or higher.) No annual contract, no hidden fees! Some restrictions apply. Call

**150 MISC SERVICES**

IVS 1-855-602-2009.  
**DIVORCE \$130.** Complete preparation. Includes children, custody, support, property and bills division. No court appearances. Divorced in 1-5 weeks possible. 503-772-5295. [www.paralegalalternatives.com](http://www.paralegalalternatives.com) [legalalt@msn.com](mailto:legalalt@msn.com).

**150 MISC SERVICES**

limited Talk, Text and Data For Just \$25/mo! The Power Of 3 5G Networks, One Low Price! Call Today and Get The Latest iPhone Every Year On Us! 844-955-3417.

Get DISH Satellite TV + Internet! Free Install, Free HD-DVR Upgrade, 80,000 On-Demand Movies, Plus Limited Time Up To \$600 In Gift Cards. Call Today! 1-866-373-9175.

Jacuzzi Bath Remodel can install a new, custom bath or shower in as little as one day. For a limited time, waiving ALL installation costs! Additional terms apply. Subject to change and vary by dealer. (Offer ends 12/27/26.) Call 1-855-341-5268.

No more cleaning out gutters. Guaranteed! LeafFilter is backed by a no-clog guarantee and lifetime transferable warranty. Call

**150 MISC SERVICES**

today 1-855-536-8838 to schedule a FREE inspection and no obligation estimate. Get 15% off your entire order. Plus, Military & Seniors get an additional 10% off. Limited time only. Restrictions apply, see representative for warranty and offer details.

Portable Oxygen Concentrator May Be Covered by Medicare! Reclaim independence and mobility with the compact design and long-lasting battery of Inogen One. Free information kit! Call 855-839-0752.

Prepare for power outages today with a Generac Home Standby Generator. Act now to receive a FREE 5-Year warranty with qualifying purchase. Call 1-877-557-1912 today to schedule a free quote. It's not just a generator. It's a power move.

The bathroom of your

**150 MISC SERVICES**

dreams in as little as 1 day. Limited Time Offer - \$1000 off or No Payments and No Interest for 18 months for customers who qualify. BCI Bath & Shower. Many options available. Quality materials & professional installation. Senior & Military Discounts Available. Call Today! 1-844-847-9778.

We buy 8,000 cars a week. Sell your old, busted or junk car with no hoops, haggles or headaches. Sell your car to Peddle. Easy three step process. Instant offer. Free pickup. Fast payment. Call 1-855-980-4382.

We Buy Houses for Cash AS IS! No repairs. No fuss. Any condition. Easy three step process: Call, get cash offer and get paid. Get your fair cash offer today by calling Liz Buys Houses: 1-866-249-8679.

YMT Vacations. Over

**150 MISC SERVICES**

50 guided tours available. Affordable, social and stress-free travel designed for mature travelers. Our tours include accommodations, transportation, baggage handling, sightseeing, entrance fees, a professional Tour Director and select meals. For a limited time SAVE \$250 on all tours. Call YMT today. 1-866-335-3689.

**500 EMPLOYMENT**

**FLORENCE UNITED METHODIST CHURCH**

Seeks an experienced church pianist. ~ \$10,000 annual base salary. ~ Weekly Sunday commitment required. Call 541-905-4248 for more information.



**For Every Real Estate Listing in Town**

See: [www.trhunter.com](http://www.trhunter.com)

**TR HUNTER REAL ESTATE**  
541-997-1200

**11445 E Mapleton Rd. - \$729,000**

3 Bdrms, 3 Baths, 2440 SqFt. Five-acre riverfront property offering privacy, versatility, large shop, and endless potential. #3738-363944680

**Cedar Ln #112 - \$150,000**

0.66 acre lot. Design your dream home in peaceful Dunes City near lakes, dunes, and nature. #3718-174208206

1749 Highway 101 • 541-997-1200

**Coldwell Banker Coast Real Estate**

Randy Paredes  
Broker

[Randy@cbcoast.com](mailto:Randy@cbcoast.com)

<https://www.cbcoast.com/randy-paredes>

541-991-9107 cell  
541-997-7777 office  
541-997-7159 fax  
100 Hwy 101  
PO Box C  
Florence, OR 97439

**INFORMATION**

Phone: 541-997-3441

**DEADLINES:**  
Legal Notices: Wednesday @4 p.m. one week prior.

Lot 28 in the gated beachside neighborhood of Kla-Ha-Nee is available now! This .17 acre lot has all utilities available, and is served by a community septic system. Buildable lot ready for your ocean view dream home. \$279,000 List #1289/238680493

The Mermaid Pearl of Falcon Street available fully furnished. You can own this spectacularly & playfully curated home out at the beach. 2 bdrm, 2 bath, 2205 sq. ft. of living space. 1-car garage. \$689,000 List #1366/521242950

Beautiful 3 bdrm, 2 bath home located in the Reserve at Heceta Lakes. 2472 sq. ft. of living space. 2-car garage with large upper flex-room. Primary suite with w-i-c, double vanity and shower. \$775,000 List #1385/306045104

Coast Village property with 1 bdrm main house & 1 bdrm bunk house with a covered patio living space between the two. Lots of storage for toys & tools. Lots of parking & back alley way access. \$275,000 List #1305/213625180

Charming 3 bdrm, 1 bath home with 1,024 sq. ft. of single level living. New roof in 2021. This home has lots of upgrades & a large enclosed back patio & spacious fenced yard. Double car garage. \$425,000 List #1368/368562667

Charming fully refreshed condo at North Bay Condos in Old Town Florence. 1 bdrm, 1 bath, 829 sq. ft. of living space. Serene river views from the private deck. \$364,950 List #1397/158116916

13+ acre parcel with zoning for Mobile Home Park and platted for 102 spaces. Property has two paved access points from North Spruce Street. \$1,490,000 List #1339/146354341

Double wide MFD with 3 bdrms, 2 baths at 1566 sq. ft. of living space on almost 2 acres of elevated land with filtered views of the Siuslaw River in Mapleton. Home has vaulted ceilings throughout and a bonus room. \$399,900 List #1380/688698754

1870 HWY 126, SUITE A  
PO Box 3040  
FLORENCE, OR  
VISIT US ONLINE AT [WWW.WCRESL.COM](http://WWW.WCRESL.COM)

**WEST-COAST REAL ESTATE SERVICES, INC.**  
541-997-7653 (SOLD)

- RESIDENTIAL
- LAND
- COMMERCIAL
- PROPERTY MANAGEMENT

Charming 2 bdrm, 2 bath home with 1134 sq. ft. of living space located in the Glenada neighborhood on a large 1.21 acre lot. Recent upgrades completed May 2026. Covered deck, hot tub & lots of parking! \$349,900 List #1408/690135973

**GENERAC**

#1 standby generator worldwide.

Get whole-home power, automatically.

Call 877-557-1912 to schedule your free quote today!

Let your loved ones care for you - and get paid!

Funded by Medicaid, choose FAMILY or FRIENDS as your paid caregiver. Your caregiver gets paid same day!

★★★★★ OVER 5,000 5-STAR REVIEWS!

**FreedomCare**  
COMPASSION • INDEPENDENCE • CHOICE

Find out if you are eligible today.  
**CALL 855.994.1589**

**Donate Your Vehicle**

Call (866) 695-9265 to donate your car, truck, boat, RV, and more today!

- Support Veteran Nonprofits.
- Free Pickup & Towing.
- Top Tax Deduction.

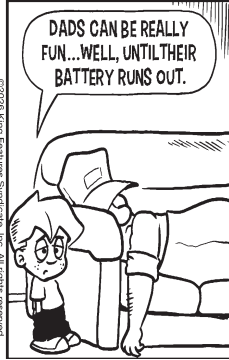
**Donate Your Vehicle Today**  
**866-695-9265**  
[www.veterancardonations.org/dnt20](http://www.veterancardonations.org/dnt20)

While we appreciate every donation, in some cases, we find that we are unable to accept certain vehicles, watercraft, and/or recreational vehicles due to the prohibitive costs of acquisition. If you have any questions, please give us a call at (866) 695-9265.

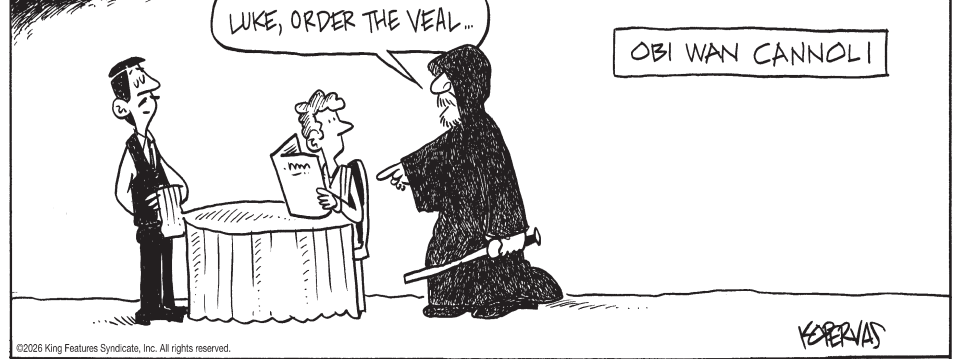
**Amber Waves**



by Dave T. Phipps



Out on a Limb



by Gary Kopervas

**500 EMPLOYMENT**

**St. Andrew's Episcopal Church in Florence seeks part-time pianist for worship services.**

Position requires playing music for one service per week. Position open to advanced piano students as well as experienced professionals. Salary dependent on expertise and experience. Willing to train candidate on particulars of Episcopal worship practices.

**Contact:**  
Marilyn Stevens:  
marilynstevens6@gmail.com

**999 PUBLIC NOTICES**

**TSN26-163 NOTICE OF POTENTIAL ORDINANCE PASSAGE**

On July 20, 2026, the City of Florence City Council will review and consider the following ordinance... Ordinance No. 4, Series 2026 - An Ordinance annexing property within the Florence Urban Growth Boundary, identified as Assessor's Map 18-12-04-42, Tax Lots 00400 and 00500, located at 4573 Meares St. to the City of Florence. Ordinance No. 5, Series 2026 - An Ordinance approving a zoning map amendment / zone assignment to apply medium density residential (MDR) zoning to property proposed for annexation, identified as Assessor's Map 18-12-04-42, Tax Lots 00400 and 00500, located at 4573 Meares St. This notice serves as official publication of the availability of the ordinance. The full text of these

**999 PUBLIC NOTICES**

Ordinances will be available on the City of Florence website at [www.ci.florence.or.us](http://www.ci.florence.or.us), on or before Monday, July 13, 2026, or may be inspected at Florence City Hall (250 Hwy 101). Persons wishing to address the City Council may submit comments in writing or may provide verbal comments. Written testimony may be submitted by: 1. Email to the City Recorder at [cityrecorder@ci.florence.or.us](mailto:cityrecorder@ci.florence.or.us); 2. Mail to Florence City Hall; Attn: City Council, 250 Hwy 101, Florence, OR 97439 3. Drop off at Florence City Hall (250 Hwy 101) during regular business hours, 8 a.m. - 4 p.m. Monday through Friday, or at the City of Florence drop box located at Florence City Hall to the right of the main entrance. \*\* NOTE: Written comments must be received at least 2 hours prior to the start of the meeting (July 20,


**999 PUBLIC NOTICES**

2026 at 3:30 p.m.) to be distributed to the City Council and made part of the record. Citizens may provide verbal comments / testimony at the meeting either in person or virtually. In order to participate verbally at the meeting, citizens are required to complete a speaker's card at least 1 hour prior to the start of the meeting (July 20, 2026 at 4:30 p.m.). Speaker's cards are available online at <https://www.ci.florence.or.us/316/Request-to-Address-City-Council-Speakers> or by contacting the City Recorder via email at [cityrecorder@ci.florence.or.us](mailto:cityrecorder@ci.florence.or.us) or by phone at 541-997-3437. For more information about this notice, or any Florence City Council proceedings, please contact City Recorder Lindsey White at 541-997-3437, or via email at [cityrecorder@ci.florence.or.us](mailto:cityrecorder@ci.florence.or.us). 07/01/26

**999 PUBLIC NOTICES**

**to your good health**

WITH **Dr. Keith Roach**



a terrible toll on a person's social and financial life.

Finally, I was supervising a medical resident yesterday when we discussed the effect of these drugs on heart health. The evidence is also strong that these medications decrease the risk of heart disease — both in people with and without diabetes. Multiple mechanisms have been proposed for this heart protection, but it isn't exactly clear which ones are the most important.

For those of us who lived through the approval of previous weight-loss drugs, which were later found to cause heart damage, the news about heart protection is welcome. Still, we've been using these drugs for less than 10 years, and it's wise to use them only when there's a clear benefit in doing so.

\*\*\*

**702 GARAGE SALES**


**JULY 11 - 12 FROM 8 AM-3PM.**

87763 Rhododendron Drive Florence NEW AND USED ITEMS Furniture, appliances, camping and fishing gear, tools, home decor, patio furniture, newer riding lawnmower, 2 push mowers, Lots of new CHRISTMAS and COLLECTIBLES!

**The Garden Bug**

In ancient Egypt, brides carried sheaves of wheat, symbolizing fertility and prosperity. During the Middle Ages, brides carried herbs and spices to mask unpleasant odors and ward off evil spirits. In the Elizabethan era, brides entwined their hair with flower garlands, and the Victorian era ushered in lilies, roses, and orchids adorned with ribbons, lace, and even jewels. Queen Victoria herself carried orange blossoms and myrtle stems in her wedding bouquet.

**Wedding bouquets**



Source: parkchateau.com - Brenda Weaver

© 2026 by King Features Syndicate, Inc. World rights reserved.

**SHELTER COVE NEIGHBORHOOD SALE**

Sat. 7/11 9AM-3PM. Collectibles, glassware, jewelry, antiques, sports/exercise equipment, camping/fishing gear, furniture, books, kitchen, household, tools, toys, decor, DVDs

**GO FIGURE!**

The idea of Go Figure is to arrive at the figures given at the bottom and right-hand columns of the diagram by following the arithmetic signs in the order they are given (that is, from left to right and top to bottom). Use only the numbers below the diagram to complete its blank squares and use each of the nine numbers only once.

	+		-		=	2		
+				+				
	+			+		= 15		
÷		+		÷				
	+		×		=	77		
=		=		=				
1		10		2				
1	2	3	4	5	6	7	8	9

© 2026 King Features Syndicate, Inc.

**REDUCE REUSE RECYCLE**



**Even Exchange** by Donna Pettman

Each numbered row contains two clues and two 6-letter answers. The two answers differ from each other by only one letter, which has already been inserted. For example, if you exchange the A from MASTER for an I, you get MISTER. Do not change the order of the letters.

1. Hypnotic spell	T _ _ _ _ _	Cavort	P _ _ _ _ _
2. Rivulet	_ _ _ _ K	Family of birds	_ _ _ _ D
3. Veranda	_ _ O _ _ _	Roost	_ _ E _ _ _
4. Citadel	_ _ S _ _ _	Livestock	_ _ T _ _ _
5. Every 24 hours	_ _ A _ _ _	Lacy mat	_ _ O _ _ _
6. Cool & refreshing	_ _ S _ _ _	The very edge	_ _ _ _ N _ _ _
7. Handgun	_ _ _ _ _ L	Cylinder	_ _ _ _ _ N
8. Store employee	_ _ E _ _ _	Superman Kent	_ _ A _ _ _
9. Dad	F _ _ _ _ _	Shaving foam	L _ _ _ _ _
10. Flintstone's pal	_ _ B _ _ _	Distant thunder	_ _ M _ _ _

© 2026 King Features Synd., Inc.

**Glp-1 Agonists Might Help Obese Man With Drinking Habit**

**DEAR DR. ROACH:** My brother-in-law is a lovely man, but for years, he's suffered from obesity. He also gambles and drinks alcohol too much. I hesitate to get too involved, but I recently read that the new weight-loss drugs based on GLP-1 agonists are also helpful in reducing alcohol and gambling addictions. This sounds too good to be true. Is it? — D.N.A.

**ANSWER:** The evidence is very strong that GLP-1 agonists like tirzepatide (Zepbound) and semaglutide (Wegovy) help people lose weight. About 80% to 90% of people will experience a weight loss of more than 5% of their initial body weight. For people who are severely obese, people with obesity and metabolic complications (diabetes, prediabetes or metabolic syndrome), and people with other weight-related complications (sleep apnea and arthritis), the benefits of these medicines probably outweigh the risks just for the weight loss.

The evidence for GLP-1 agonists helping with alcohol use disorder is now quite strong, with studies showing significant reductions in alcohol-related hospitalizations and a reduction in problem drinking. The evidence for gambling disorders is preliminary based on the understanding of how these drugs work in the brain. There aren't any strong clinical data at this time supporting the use of GLP-1 agonists for a gambling disorder.

Still, given the clear benefits in weight reduction and problem drinking, these drugs might be a good choice for your brother-in-law — if both he and his physician agree. It might also help with his gambling problem, which I've seen take

**DEAR DR. ROACH:** What are the long-term health risks of being exposed to fumes, such as in hair or nail salons or automobile repair shops? Can these fumes affect your internal organs? — C.R.C.

**ANSWER:** The primary organ affected by fumes during occupational exposure are the lungs. Chest tightness, wheezing and allergic symptoms are common after an exposure to benzene, formaldehyde, toluene, and other substances that are commonly used in hair and nail salons — often at levels that exceed the safe thresholds. Half of technicians in one study were affected.

Auto body and paint workers are also exposed to the same (or very similar) chemicals, and they can develop asthma at a rate that is 80 times higher than the general population. In addition to effects on the lungs, occupational exposure to these chemicals increases the risk of some cancers, especially leukemia (benzene), sinus and nasal cancer (formaldehyde), and nervous system cancers (benzene).

Although personal protection equipment can reduce these exposures, many workers don't use them regularly. Improved ventilation and less-toxic chemicals are needed to protect workers.

*Dr. Roach regrets that he is unable to answer individual questions, but will incorporate them in the column whenever possible. Readers may email questions to [ToYourGoodHealth@med.cornell.edu](mailto:ToYourGoodHealth@med.cornell.edu).*

© 2026 North America Synd., Inc. All Rights Reserved

Call 541.997.3441 to subscribe to **SIUSLAW NEWS**

News & views that define our community

[www.thesiuslawnews.com](http://www.thesiuslawnews.com)

**Even Exchange** answers

1. Trance, France	6. Brisk, Brink
2. Porch, Perch	7. Pistol, Piston
3. Porch, Perch	8. Clerk, Clark
4. Castle, Cattle	9. Father, Lather
5. Daily, Dolly	10. Rubble, Rumble

# Business & Service DIRECTORY

**BLINDS / WINDOW TREATMENTS**

*The Finishing Touch*

Blinds • Shades • Draperies • Shutters  
We Design ~ We Install  
Residential • Commercial • 30 Years Experience  
**541-991-3405**  
Located in Florence

**CONSTRUCTION/CONTRACTORS**

**Jack Mobley CONSTRUCTION**

Custom Homes 541-997-2197 CCB#164472

Remodels • Additions • Foundations & Flatwork

**LEGAL SERVICES**

experienced • compassionate • effective

**GARNER LAW OFFICE**

Business Law  
Real Estate Law  
Free Consultations  
**541.991.8121**

3298 Highway 101, Florence, OR 97439  
[www.garnerlawoffice.net](http://www.garnerlawoffice.net)

**CLEANING SERVICES**

**Tweety Sez:** CCB #96660  
Consistent, Quality Cleaning.

For clean as a whistle, call **541-997-2385**  
**Florence Janitorial Services**

Bill and Jo Hine, Owners  
CERTIFIED, LICENSED, BONDED & INSURED

**ELECTRICAL**

**SIUSLAW VALLEY ELECTRIC, INC.**  
RESIDENTIAL • COMMERCIAL CONTRACTING

1710 Laurel Way - Airport Industrial Park  
Store Hours: Mon. thru Fri., 8 A.M. to Noon

Forrest G. Grigsby • Stanton E. Grigsby Phone 997-8821  
P.O. Box 1216 • sve-1973-grigsby@hotmail.com FAX 997-3723

**PAINTING**

General Contractor

**Jorge's Detail Painting LLC**  
Dryrot & Repair

INTERIOR | EXTERIOR | RESIDENTIAL | COMMERCIAL  
Serving Lane County Since 1997 CCB#207458

[www.PainterJorge.com](http://www.PainterJorge.com) 541-521-3271

Major credit cards accepted

**neil's CARPET CLEANING**

Upholstery  
541-997-3825 CCB #96660  
Certified-Bonded STEAM OR DRY  
Smoke • Water Cleanup

**INTERNET SERVICES**

**OregonFAST.net**

541-902-1566

Broadband Internet \$40 mo.  
Computer Repair & Support \$80/hour  
Web Hosting & Email Services

1735 Kingwood St., Ste A. Florence

**PROPANE SERVICES**

**R&D Propane**

Residential and Commercial delivery service  
Family Owned and Operated Since 1983

We Pride ourselves on providing the best customer service possible.  
541-746-4621 • [www.rdpropane.com](http://www.rdpropane.com)

**Ant's Concrete**

Excavation, flat work, sidewalks, patios, demos and much more!  
Call Anthony at 541.735.4836

CCB#197439

Call or email your advertising representative to advertise  
**509-216-1658 or [gwinterholler@countrymedia.net](mailto:gwinterholler@countrymedia.net)**

**safeStep**

FEEL SAFE ON EVERY LEVEL

**\$750 OFF**  
+ FREE Installation  
of your new  
Safe Step Stairlift

**1-888-473-1933**



**Donate Your Car**

Imagine the Difference You Can Make

Vehicle donations are fully tax-deductible and the proceeds help provide services to help the blind and visually impaired.  
**FREE TOWING & TAX DEDUCTIBLE**

When you donate your car, you'll receive:  
✓ a \$200 restaurant voucher & ✓ a 2-night, 3-day hotel stay at one of 50 locations

**Call 1-844-533-9173**

Help Prevent Blindness Get A Vision Screening Annually **Heritage for the Blind**



**DON'T FORGET TO RECYCLE**



# TR Hunter Real Estate

1749 Highway. 101, Florence OR 97439

www.trhunter.com

541-997-1200 • 800-210-7453



Price Reduced

**129 Evergreen Ln. - \$350,000**

2 Bdrms, 2 Baths, 1172 SqFt. Florentine Estates fixer with flexible layout, workshop garage, and private setting ready for updates. #3760-474192263



Price Reduced

**420 Leelo Ct. - \$365,000**

3 Bdrms, 2 Baths, 1638 SqFt. Quiet cul-de-sac living with RV parking, exterior bonus room, workshop, and coastal charm! #3676-776471332



Price Reduced

**5425 Bay Berry Dr. - \$285,000**

2 Bdrms, 1 Bath, 800 SqFt. Close to the lakes, beaches and parks. Upgraded home with RV hook-ups separately metered. #3783-270685171



Price Reduced

**1791 Willow Ln. - \$375,000**

3 Bdrms, 2 Baths, 1400 SqFt. Move-in ready home backing to nature with updates, privacy, and in-town location. #3764-175253689



Price Reduced

**88426 2nd Ave. - \$649,000**

2 Bdrms, 2 Baths, 1810 SqFt. Whimsical beach retreat, proven Airbnb income, ocean views, one block to sand. #3742-457960361



**5340 Boy Scout Rd. - \$1,195,000**

3 Bdrms, 2.5 Baths, 2046 SqFt. 2024 built Siltcoos lakefront home with 3-car garage on 1.38 acres. #3797-752215698



**1601-558 Rhododendron Dr. - \$329,000**

2 Bdrms, 2 Baths, 1152 SqFt. Lovely home located in 55+ gated community. Detached garage and peek river views! #3794-358006338



**89406 Leverage Dr. - \$675,000**

2 Bdrms, 2 Baths, 2123 SqFt. Private custom home among towering evergreens, vaulted ceilings, loft, near Sutton Lake. #3793-154050269



**88416 1st Ave #209 & #211 - \$292,000**

2 Bdrms, 2 Baths, 780 SqFt. Oceanfront resort condo with Pacific views, beach access, amenities, and investment potential. #3791-504912477



**87735 Hwy 101 #1 - \$50,000**

2 Bdrms, 1 Bath, 672 SqFt. Coastal living made easy with spacious porch, fenced yard, RV hookups, and community amenities. #3790-722905311



**89616 Ben Bunch Rd. - \$1,350,000**

3 Bdrms, 3 Baths, 3879 SqFt. Luxurious primary suite, custom kitchen, vaulted ceilings, expansive acreage, with peace and seclusion. #3789-231959855



**1903 17th St. - \$345,000**

3 Bdrms, 1 Bath, 1184 SqFt. Centrally located home with RV amenities, workshop space, fenced yard, and alley access. #3788-114657964



**2332 24th St. - \$290,000**

2 Bdrms, 1.5 Baths, 1305 SqFt. Florence investor opportunity. Fixer ready for transformation in Summerset Estates. #3786-771599461



**88380 2nd Ave. - \$495,000**

3 Bdrms, 2 Baths, 1650 SqFt. Private beach area retreat with spacious porch, fenced yard, RV hookups, and coastal living. #3785-640791175



**1640 19th St. - \$495,000**

1680 SqFt Duplex. Turnkey 2018 with two flexible units, modern finishes, garages, strong rental demand, immediate income. #3784-460153542



**6895 Canary Rd. - \$649,000**

3 Bdrms, 2 Baths, 1512 SqFt. Nicely updated manufactured home, 24x48 shop and 4.41 acres just 3.5 miles to Florence. #3782-653581277



**89215 Sutton Lake Dr. - \$985,000**

3 Bdrms, 2.5 Baths, 1982 SqFt. Lakefront home on 3.69 acres. Solid wood doors, hardwood floors, high ceilings, and fireplace. #3780-422372104



**4830 Darlings Ln. - \$624,900**

3 Bdrms, 2 Baths, 1701 SqFt. Private 1.01 acres with sun room, shop, hot tub, koi pond, and peaceful landscaping. #3776-299109641



**1600-245 Rhododendron Dr. - \$279,995**

3 Bdrms, 2 Baths, 1782 SqFt. Beautifully renovated Greentrees home with vaulted ceilings, RV parking, garage, and community amenities. #3775-261569229



**1751 Willow Ln. - \$505,000**

3 Bdrms, 2 Baths, 1500 SqFt. Updated home with RV parking, modern finishes, efficient upgrades, and inviting outdoor space. #3771-175687121



**90 Outer Dr. - \$289,000**

3 Bdrms, 1.5 Baths, 936 SqFt. Gated coastal community home with amenities, deck, garage, storage, and nearby beach access. #3770-770508845



**2372 S 22nd Ct. - \$549,900**

3 Bdrms, 2.5 Baths, 2113 SqFt. Move-in ready home with updates, spacious living areas, pellet stove, on a cul-de-sac. #3769-768863492



**320 Oak St. - \$519,000**

4 Bdrms, 2.5 Baths, 1621 SqFt. Inviting 2025 two-story home with pantry, covered patio, alley access, near Old Town. #3768-108238082



**Vanessa Buss**  
Broker  
541-991-0478



**Richard Beaudro**  
Principal Broker  
541 991-6677



**Heidi White**  
Broker  
541 600-6058



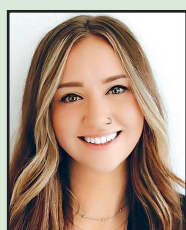
**Aileen Sapp**  
Broker, SRS,  
SRES  
541 999-5396



**Crystell Wise**  
Principal Broker,  
CRS, SRS, SRES  
541 991-9487



**Wendy Krause**  
Broker  
541 999-7765



**Kelsey Peterson**  
Broker  
541-999-2584



**Melody Beaudro**  
Principal Broker  
541 991-2151



**Kyle Lewis**  
Broker  
541 991-6728



**Mike Blankenship**  
Broker,  
ABR, SRS  
541 991-7826



**Haylee Cole**  
Broker  
541-999-2112



**Tim Sapp**  
Owner /  
Principal Broker  
541 999-8230



**Amy Johnson**  
Broker, CSA  
541 999-7875



**Nichole Lewis**  
Broker  
541 999-8786



**Elijah Blankenship**  
Broker  
541-991-7367