

Your **COMMUNITY** *Guide*

A LOCALS GUIDE TO LIVING

LINCOLN CITY

NEOTSU

OTIS

TAFT

GLENEDEN BEACH

DEPOE BAY



How well do you know your Home Owners Insurance Policy?

Understand your coverage before you need it

Significant events are a part of life. When your life changes, **your insurance should do the same.** It may be time to re-evaluate. **Call us today for a review of your coverage**



Charlotte Lehto

Your friends in the insurance business



THE INSURANCE STORE **NW**
HealthCare Planning for Life



Call for an Appointment Today!

 **541-994-2884**

Visit our Website at: www.CharlotteLehto.com

Email your questions:

 **Clehto@farmersagent.com**

4270 NE Highway 101, Lincoln City, OR 97367

LINCOLN CITY'S NEWSPAPER

THE  NEWS GUARD
95 years serving our community

THE NEWS Guard

The News Guard is published weekly
by Country Media, Inc.

1818 N.E. 21st St.
Lincoln City, OR 97367
541-994-2178

Publisher:

David Thornberry
dthornberry@countrymedia.net

Advertising Director:

Robyn Smith 541-994-2178
newsguardads@countrymedia.net

Hello and *Welcome*

Your Community Guide is a handbook to daily living in Lincoln County. Whether you've lived here all your life or are just moving to Lincoln County, the information here will be useful.

Inside this guide, you will find important contact numbers, emergency preparedness, license your dog or sit and enjoy a crossword puzzle. Lincoln County is steeped with rich historic roots and a strong focus on community.

There are a variety of cultural offerings, awe inspiring scenery and lots of friendly residents.

Reach out and get involved.

We're happy to have you as our neighbor.

CONTENTS

Cities 4 - 12

Resources 12 - 17

Arts & Entertainment 18 - 23

Preparedness 29 - 31

Calendars 33, 35, 37, 39, 41 and 43

Puzzles 44 - 47







Lincoln County *Lifestyle*

WEATHER & CLIMATE

Summer high around 70, Winter low around 39
80 inches of rainfall annually, less than 1 inch of snow annually
156 days of sun, 174 days of some type of precipitation

TOP THREE EMPLOYERS

Accommodation and Food Services 15.81%
Government 15.57%
Retail Trade 13.63%

TOP THREE INDUSTRIES BY WAGES

Manufacturing \$62,605
Government \$58,454
Education and Health Services \$52,743

POPULATION

The population is 50,583 people with a growth of 3.2% since April 2020.

TRANSPORTATION FROM LINCOLN CITY

Portland 105 miles
Salem 57 miles
Albany 77 miles
Otis 3 miles
Gleneden Beach 9 miles
Depoe Bay 15 miles

SCHOOLS

Lincoln County public schools spend \$16,693 per student. The average school expenditure in the U.S. is \$12,383. There are about 19.9 students per teacher in Lincoln County.



Lincoln City

Lincoln City started out as a string of town along seven miles of the coast. Lincoln City was named after the county, which was named in honor of former President Abraham Lincoln. The first approach of Europeans to the Pacific Northwest was by sea. The coastal Salishan tribes, including Siletz, Tillamook and Nehalem people fished, hunted and gathered in isolation until the Europeans began settling in the area. The first recorded tourists came in 1837 and camped around the Oceanlake area.

In 1855, by an executive order by the president of the United States, the Siletz Reservation was established as a place to relocate Native Americans from southern Oregon and northern California. Later, the reservation area was decreased.

In the 1930s, the districts that made up what is now known as Lincoln City, competed to attract tourists and increase business. In 1964, Oceanlake, Delake, Nelscott, Taft and Cutler City voted to consolidate as one city. Nominations for the city were published in the newspaper. The two most popular names were Surfland and Lincoln City.

Lincoln City is home to one of the world's shortest rivers, the D River, connecting Devil's Lake with the Pacific Ocean.

Two kite festivals are held annually in the city, the Summer Kite Festival in June and the Fall Kite Festival in October. Both festivals are each held at D River Wayside.





Neotsu

Neotsu is an unincorporated community in Lincoln County, located on the northern shore of Devils Lake across from Lincoln City. The community is on the 45th parallel north.

Neotsu, named for an Indian word meaning 'lake near the ocean' was granted a post office in 1900, the Lincoln County Historical Society states. Otis was established the same year. The post office moved from Neotsu to Otis, then to Devils Lake, back to Otis, then again to Neotsu in 1928.



Otis

Otis is an unincorporated community in Lincoln County, a half mile north of Otis Junction on Hwy 18. Otis Post Office was established in 1900 and was named after Otis Thompson, the nephew of Archibald S. Thompson, the postmaster.

The Otis zip code also covers the community of Rose Lodge.

Otis made national headlines in 1999 and again in 2004 when it was announced the town was for sale for \$3 million. The news stories described the Otis café and other amenities at Otis Junction.

Otis Café is a James Beard Award winning café. There has been a café at this location since the 1920s.





Taft

Cissie and Jacob Johnson were the first residents of Taft, according to Lincoln County Historical Society. They had been given a 160-acre allotment on Siletz Bay as compensation when reservation lands were taken away. John W. Bones opened the first store in Taft, establishing a post office in the store in 1906.

In 1926, Fred C. Robison platted the town of Taft. He had purchased the Johnson's land in 1922.

Taft was officially incorporated as a town in 1949, population 498. It officially became the Taft neighborhood of Lincoln City in 1965. In the Historic Taft District, you will find shopping, the history of glass floats, and plenty of art galleries. Essential gear for surfing can also be found here.



Depoe Bay

Before the arrival of settlers, coastal Indian tribes lived in the general area. The natural harbor in Depoe Bay was used for seal hunting and fishing. In 1856, the Coast Reservation was formed and Indians were removed from their homes to the new reservation.

In 1878, a man named Dr. F.W. Vincent and his grandfather sailed up the coastline from Newport and entered the present-day Depoe Bay harbor. They called the little harbor “Wrecker’s Cove.”

Depoe Bay is built on land allotted to Charley Depot and his family in 1894, according to the Lincoln County Historical Society. His name was given to him when he worked odd jobs at Depot Slough because his native name was difficult to pronounce.

In the late 1920s, the Sunset Investment Company purchased the land with the intent of establishing a town.

Known for its whale watching, the town has a Whale Watching Center, shore observation decks and charter boats.





Gleneden Beach

Gleneden Beach is located just a few miles south of Lincoln City. In the 1920s, as Hwy 101 was being built, a family bought parcels of the land and named it Gleneden, named after their daughter Glen. It slowly became its own town and ‘Beach’ was added, according to North Lincoln History Museum.

Located near Siletz Bay, it has wildlife-viewing sites and a championship golf course, complete with a spa. The town has glassblowing, pottery, a marketplace and an aerial park.

Gleneden beach is located near a string of state parks. Gleneden Beach State Recreation Site offers beach access with occasional close-up views of seals and other wildlife. The site was purchased from various private land owners in 1966 and 1967.

Several vacation rentals and a bed and breakfast inn are located in the town.







Lincoln County *Resources*

Lincoln County is fortunate to have an incredible source of providers who are committed to their clients and this community.

Our health and wellness professionals are dedicated to maintaining the spirit, heart, strength and passion of each person within the county.

We are proud partners with health and wellness businesses as they strengthen the livability of our community through inspiration, engagement, leadership and economic growth.

The Lincoln County Health & Human Services Department serves the community in the following areas:

Public Health

Mental Health Counseling

Addictions Counseling

Developmental Disability Services

Lincoln Community Health Center - Primary Care

School Based Health Centers

Environmental Health

Birth and Death Certificates



Resources

OREGON FAMILY SUPPORT NETWORK

Phone: 541-901-1175

Email: jodiep@ofsn.net

PARENTS HELPING PARENTS SUPPORT GROUP

We offer a support group in each of the following towns:

Waldport, Newport, Toledo, and Depoe Bay. At our monthly meetings, groups can:

- Connect with other parents, caregivers, and family members in a confidential and supportive setting.
- Get helpful information and exchange ideas with others.
- Share your experiences, successes and frustrations with others who understand your journey.

LINCOLN COUNTY HEALTH & HUMAN SERVICES

36 SW Nye Street

Newport, Oregon 97365

- Public Health: 541-265-4112
- Environmental Health: 541-265-4127
- Behavioral Health: 541-265-4179
- Primary Care: (541) 265-4947
- Developmental Disability Services: 541-265-0482
- Health Insurance Enrollment Assistance: 541-265-0430

SAMARITAN HEALTH SERVICES GRIEF SUPPORT GROUP

- Lincoln City: 541-996-7328
- Newport: 541-574-4751

DIABETES SUPPORT GROUP - CENTER FOR HEALTH EDUCATION

Registration is not needed.

Call for more information:

541-574-4682

Monthly Meetings at

740 SW Ninth St, Newport

www.samhealth.org

LINCOLN COUNTY SUICIDE PREVENTION SUPPORT & CRISIS

1-888-232-7192 (24 hours)

Samaritan Health Services Various Support Groups

www.samhealth.org

ADULT CHILDREN OF ALCOHOLIC AND DYSFUNCTIONAL FAMILIES

Wed., 6:30 to 7 p.m.

Samaritan North Lincoln Hospital Education Conference Room
3043 NE 28th St.,

Lincoln City

503-819-9302

jamesd.aca@gmail.com



ACE[®]
The helpful place.

Mills Ace-South Mills Ace-North

4910 SE Hwy 101	2047 NE 22nd St.
Lincoln City, OR	Lincoln City, OR
541-996-2131	541-996-3334

HunterDouglas
Window Coverings

STIHL[®]

Benjamin Moore
Paint like no other.[™]

SERVING LINCOLN CITY SINCE 1973



Looking for a sign that it's time to buy a home on the Oregon Coast?
You just found it

ADVANTAGE
Real Estate
advantagerealestate.com

ADVANTAGE
Real Estate

Let our Experience be your Advantage
205 E. Olive St., Newport, OR 97365 • 541-265-2200
www.advantagerealestate.com • *By appointment only*



Resources

ADVANCE DIRECTIVE WORKSHOP

2nd Wednesday, 2:30 to 4 p.m.
Samaritan North Lincoln Home Health
& Hospice Conference Room
3011 NE 28th St., Lincoln City
Jerry Koetitz 541-996-7328

BREAST CANCER SUPPORT GROUP

3rd Thurs., 10 a.m. to noon
Vivian's Restaurant,
1115 SE First St., Lincoln City
Sue Bosnjak 541-994-4016

CANCER SUPPORT GROUP

2nd Wed., 1 p.m.
Pig 'n Pancake
3910 NE Hwy 101, Lincoln City
541-994-3268

CAREGIVER SUPPORT GROUP

3rd Thurs., Noon to 1 p.m.
NESS Club at Odd Fellows Hall
1350 SE Oar, Lincoln City
Alethea 541-921-0937

CHILDBIRTH EDUCATION

Saturday, Dec. 8 (other dates TBD)
Noon to 6 p.m.
Samaritan North Lincoln Hospital
Education Conference Room
3043 NE 28th St., Lincoln City
Stephanie or Trista 541-996-7179

DEMENTIA SUPPORT GROUP

3rd Thurs., 1:30 p.m.
Lakeview Senior Living
2690 NE Yacht Ave., Lincoln City
Christy Turner 541-994-7400

DIABETES SELF-MANAGEMENT CLASS

Samaritan North Lincoln Hospital
Health Professions Education Center
3011 NE 28th St., Lincoln City
Mica Ward 541-557-6414

DIABETES SUPPORT GROUP

3rd Thurs., 2 to 3 p.m.
Samaritan North Lincoln Hospital
Education Conference Room
3043 NE 28th St., Lincoln City
Sue Peters 541-557-6414

GRIEF SUPPORT GROUP

Four-week session begins 1st Tues. of the month, 2 to 4 p.m.
Samaritan North Lincoln
Home Health & Hospice
3011 NE 28th St., Lincoln City
Jerry Koetitz 541-996-7328

MS SELF-HELP GROUP

2nd Tues., 11 a.m.
Moose Lodge at Odd Fellows Hall
1350 SE Oar, Lincoln City
Alethea 541-921-8149

COMMUNITY INFORMATION CENTER FOR HEALTH & SERVICES

DIAL 211
www.211info.org

ALCOHOLICS ANONYMOUS

800-333-5051

ALCOHOL & DRUG HOTLINE

800-784-6776

AIDS SUPPORT HOTLINE

800-642-8244

HIV ALLIANCE OF OREGON

541-342-5088
hivalliance.org

CHILD ABUSE REPORTING

855-503-7233
Children's Advocacy Center
541-574-0841
www.childrensadvocacycenter.net

DOMESTIC ABUSE HOTLINE

800-681-8663

PREGNANCY HOTLINE

800-550-4900

ELDER ABUSE

800-828-6194

OREGON CRISIS LINE

866-266-0888

SUICIDE PREVENTION

800-273-8255

SUICIDE PREVENTION COALITION

1-800-273-TALK (8255)
suicidepreventionlifeline.org

CASA

541-265-3116
<http://www.casalincolntillamook.org/>

CENTRO DE AYUDA

541-265-6216
<http://www.cdanewport.org/>

FAMILY PROMISE OF LINCOLN COUNTY

541-992-1682

MY SAFE PLACE

(Formerly My Sister's Place)
541-574-9424
Mysistersplace.us

PROGRESSIVE OPTIONS

541-265-4674

SHANGRI-LA

541-265-4015
<http://www.shangri-laoregon.org/>



Resources

VICTIM ASSISTANCE
(Lincoln County)
541-265-3462

LEGAL AID
541-265-5305

FOOD SHARE LINCOLN COUNTY MAIN
541-265-8578
www.foodsharelc.org

LINCOLN CITY PANTRY
541-994-3699

DEPOE BAY PANTRY
541-270-3404

SILETZ PANTRY
541-270-4993

NEWPORT PANTRY
541-992-5723

WIC OFFICE (WOMEN, INFANTS & CHILDREN)
36 NW Nye Street, Newport
541-265-0414

ANIMAL SHELTER
541-265-6610
www.co.lincoln.or.us/animalshelter/page/lincoln-county-animal-shelter

FOOD STAMPS
(DHS Self Sufficiency Office)
541-265-2248
(includes SNAP, TANF & Employment Services)

AMERICAN RED CROSS
541-265-7182 (877) 272-7337
www.redcross.org/local/oregon/get-help.html
Get Help With:
Temporary Sheltering/Housing
Mental Health Assistance
Financial Assistance
Health Services

HEATING/ENERGY ASSISTANCE
541-265-3293

SALVATION ARMY
541-265-6814

SILETZ TRIBAL SERVICES
541-444-2532

VETERAN'S SERVICES
541-574-6955

EMPLOYMENT OFFICE
541-265-8891

HOUSING AUTHORITY
541-265-5326 x317

SAMARITAN HOUSE
541-574-8898

HELP CENTER
541-574-5824

COMMUNITY SERVICES CONSORTIUM
Housing, Health Services, Veterans
& Energy Assistance
541-265-8505

LAW ENFORCEMENT NON-EMERGENCY

LINCOLN CITY POLICE
541-994-3636

LINCOLN COUNTY SHERIFF
541-265-4277

STATE POLICE LOCAL DISPATCH
541-265-5353

STATE POLICE GENERAL HEADQUARTERS
800-452-7888

NEWPORT POLICE
541-265-4231

NON-EMERGENCY
HEALTH SERVICES
(EMERGENCIES DIAL 911)

LINCOLN CITY HOSPITAL
541-994-3661

NEWPORT HOSPITAL
541-265-2244

EMERGENCY DENTAL
541-758-3000

TRANSPORTATION/TRANSIT SERVICES

EASY RIDE
541-265-8740

COUNTY TRANSIT
541-265-4900

DIAL-A-RIDE
541-265-4900

VALLEY RETRIEVER
541-336-2254

OREGON ROAD CONDITIONS
800-977-6368
www.co.lincoln.or.us/emergencymanagement/page/road-conditions

VETERAN'S SERVICES

LINCOLN COUNTY VETERAN SERVICES
541-574-6955

VETERAN'S VAN
541-574-6955



Resources

VETERAN'S REGIONAL OFFICE
800-827-1000 x110

SENIOR SERVICES

LINCOLN CITY SENIOR CENTER
2150 NE Oar Place, Lincoln City
541-994-2722

NEWPORT CITY SENIOR CENTER
20 SE 2nd Street, Newport
541-265-9617

OREGON CASCADES WEST COUNCIL OF
GOVERNMENTS
203 N Main Street, Toledo
541-336-2289
www.ocwcog.org



McEachern Audiology & Hearing Aid Center



Le'Anne McEachern
Doctor of Audiology

- Professional Hearing Exams
- Sound Booth
- Hearing Aid Sales & Services
- Complete Hearing Aid Repair Lab
- NoCost/No Obligation demo hearing aid fittings

Weekdays 9-5 • 541-272-5015

Sea Towne Shopping Center, 1622 N. Coast Highway, Newport

www.hearingnewport.com

McKay's

MARKET

EMPLOYEE OWNED. OREGON GROWN.

McKay's Market: 801 S.W. Highway 101, Lincoln City, OR 97367

541-994-4354







Lincoln County *Arts & Leisure*

There's a little bit of something for everyone in Lincoln County.

Whether it's live music, a festival, an art exhibit or simply savoring a craft beer with a regional delicacy, you're sure to find something to make a memory for yourself.

Lincoln County nightlife serves of a sampling of many different music genres so you can dance the night away.

Other offerings include catching a performance at the county's theater or trying your luck at the local arcade.

Or take a stroll along the beach. Who knows? Maybe you'll be one of the lucky ones to find a handcrafted glass float.

And of course there's plenty of great shopping. From homemade to designer, you're sure to go home with something fabulous!



Confederated Tribes of Siletz Indians



Strong,
resilient
& Indigenous
women for
generations
to come.



For Tribal information, call 541-444-2532;
or visit our website ctsi.nsn.us

Arts & Leisure

LINCOLN CITY EVENTS

Summer Kite Festival
June 25 –26 2022
D River State Recreation Site

4th of July in Lincoln City – No Fireworks permitted in parks or Oregon Beaches
Festivities Historic Taft District with
Fireworks display approximately 10pm
Patriotic Boat Parade – Devils Lake starting 4pm

2022 Sandcastle Contest
August 13 2022
Historic Taft District, Siletz Bay

Haunted Taft
October and every full moon
Historic Taft District, Siletz Bay
www.hauntedtaft.com

Great Oregon Coast Garage Sale
April 2023
Lincoln City Chamber of Commerce
541.994.3070

Finders Keepers
www.oregoncoast.org
Special Float Drop Days
Starting in January – All year round

Festival of Illusions
Lincoln City Cultural Center
www.lincolncity-culturalcenter.org

Lincoln City Farmers Market
The Marketplace at Salishan - Sundays 9am-2pm
7755 US Hwy 101, Gleneden Beach, OR 97388
info@lincolncityfarmersmarket.org
P.O. Box 608 Lincoln City, OR 97367

DEPOE BAY EVENTS

Whale Watching Winter – mid December thru mid January
Whale Watching Spring – late March through June

Depoe Bay's Traditional Salmon Bake
www.discoverdepoebay.org

Depoe Bay Crab Feed
Third weekend in April at Depoe Bay Community Hall
www.discoverdepoebay.org

ATTRACTIONS

Whale, Sea Life, & Shark Museum
SW Ellingson Street & S Hwy 101, Depoe Bay
541.912.6734
www.oregonwhales.com

GALLERIES

Pacific Artists' Co-op Gallery
620 NE Hwy 101
Lincoln City
541.557.8000

Freed Gallery
6119 S. Hwy 101
Lincoln City
541.995.0589

Flanigan's Glass Gallery
4847 Hwy 101
Taft
541.992.4543

Volta Glass
4830 Hwy 101
Taft
541.996.7600

Kelly Howard Glass
4821 SE Hwy 101
Lincoln City
541.921.3990

Rowboat Gallery
7755 Hwy 101
Gleneden Beach
503.965.4590

Mor Art School
4933 Hwy 101
Taft
541.994.2427

Chessman Gallery
540 NE Hwy 101
Lincoln City

Lotus Mike Art
1523 NE 12th St
Lincoln City
815.814.8117





Building
wellness
together

samhealth.org/Together

Get great care for you and your family here on the central Oregon Coast.

Samaritan Health Services offers a wide range of health care in Lincoln County:

- Anticoagulation.
- Brain function.
- Cancer care.
- Cardiac device management.
- Cardiac rehabilitation.
- Cardiology.
- Cardiopulmonary.
- Colonoscopy and endoscopy.
- Diabetes education.
- Emergency services.
- Endocrinology.
- Family medicine.
- General surgery.
- Hospice.
- Imaging.
- Infectious disease.
- Infusion.
- Internal medicine.
- Kidney disease.
- Laboratory testing.
- Lymphedema.
- Medical supplies.
- Mental health.
- Nuclear medicine.
- Obstetrics and gynecology.
- Occupational medicine.
- Occupational therapy.
- Orthopedics.
- Palliative care.
- Pediatrics.
- Physical therapy.
- Podiatry.
- Psychology.
- Respiratory therapy.
- Sleep medicine.
- Speech therapy.
- Urology.
- Walk-in care.
- Wound and ostomy services.

Let us help you find a medical provider or service. Call today! 800-863-5241



Samaritan
North Lincoln
Hospital

samhealth.org/LincolnCity



Samaritan
Pacific Communities
Hospital

samhealth.org/Newport

Lincoln City

Depoe Bay

Newport

Toledo

Waldport

Arts & Leisure

Beach Bum Vintage
4235 SE Hwy 101
Taft
503.307.5352

Silver Heron Gallery
15 Bay Street
Depoe Bay
541.765.2886

Purple Starfish Gift Gallery
48 Hwy 101
Depoe Bay
541.765.2336

Crystal Wizard
7150 Gleneden Beach Loop
Gleneden Beach
541.764.7550

Thornmeadow Glassworks
Lincoln City
310.480.1174

Billy Glass Photography
Depoe Bay
541.699.8514

O'Connell Gallery
80 Hwy 101
Depoe Bay
541.765.3331

LaVoy's at Depoe Bay
14 Hwy 101
Depoe Bay
541.819.2213

jdc Fine Art
7755 Hwy 101
Gleneden Beach
619.986.2322

THINGS TO DO

North Lincoln County Historical Museum
4907 Hwy 101
Taft
541.996.6614

Prehistoric Rocks Fossils Minerals
1425 NW Hwy 101
Lincoln City
541.614.1294

Rock Your World: Pacific NW Rock, Gem & Jewelry
Gallery
3203 SE Hwy 101
Lincoln City
541.351.8423

Fleet of Flowers Depoe Bay
Memorial Day
Depoe Bay

Savannah Sipping Society
Theater West
May 26 - June 18
541.994.5663
3536 SE Hwy 101
Lincoln City

Beachcomber Days Waldport
Parade Noon
Kids Fair
Market Vendors
Beer Garden
Hwy 101/34
Father's Day Weekend

Artesian Faire
Lincoln City Farmers & Crafters Market
11am-5pm Friday
10am-4pm Saturday
7755 N Hwy 101
Gleneden Beach



BE PREPARED!

Assemble **emergency kits** with at least a 2-week supply for each family member:

- Local map showing safe evacuation routes to high ground
- First-aid supplies, prescriptions and non-prescription medication
- Water bottle and filtration or treatment supplies capable of providing 1 gallon per person per day
- Non-perishable food (ready-to-eat meals, canned food, baby food, energy bars)
- Cooking and eating utensils, can opener, Sterno® or other heat source
- Matches in water-proof container or lighter
- Shelter (tent), sleeping bags, blankets
- Portable radio, NOAA weather radio, flashlight, and extra batteries
- Rain gear, sturdy footwear, extra clothing
- Personal hygiene items (toilet paper, soap, toothbrush)
- Tools and supplies (pocket knife, shut-off wrench, duct tape, gloves, whistles, plastic bags)
- Cash

WHAT TO KNOW about tsunamis

A **tsunami** is a series of sea waves, usually caused by a displacement of the ocean floor by an undersea earthquake. As tsunamis enter shallow water near land, they increase in height and can cause great loss of life and property damage.

Recent research suggests that tsunamis have struck the Oregon coast on a regular basis. They can occur any time, day or night. Typical wave heights from tsunamis occurring in the Pacific Ocean over the last 500 years have been 20–65 feet at the shoreline. However, because of local conditions a few waves may have been much higher — as much as 100 feet.

We distinguish between a tsunami caused by an undersea earthquake near the Oregon coast (a **local tsunami**) and an undersea earthquake far away from the coast (a **distant tsunami**).

How to help with tsunami awareness in your community

- Start a tsunami buddy system
- Make and distribute emergency packs
- Initiate or participate in a local preparedness program

Visit OregonTsunami.org to find more great resources!

Climb
Assem
A



Look for these hazard zone signs and be ready to leave the area by following evacuation route signs.

Local tsunami

A **local tsunami** can come within 15 to 20 minutes after an earthquake — before the time for an official warning from the national warning system. The shaking from the earthquake may be the only warning you have. Evacuate quickly!

Distant tsunamis

A **distant tsunami** will take 4 hours or more to reach the coast. The waves will be smaller than that from a local tsunami. Evacuation for a distant tsunami in a coastal area has been put into an official plan. The shaking should prompt you to move inland from shoreline areas, then turn on your radio.

If you feel an earthquake a tsunami may be on its way


What to do:

- **Drop, cover hold** until the earthquake is over
- **Move immediately inland** to high ground and away from low-lying coastal areas
- **Follow evacuation route signs**
- **Do not wait** for official warning • **Go on foot** if at all possible • **Do not pack** or delay

WHAT TO DO for both local and distant tsunamis



1. Evacuate on foot, if at all possible. Follow evacuation signs and arrows to an Assembly Area.*
2. If you need help evacuating, tie something **white** (sheet or towel) to the front door knob. Make it large enough to be visible from the street. If the emergency is a distant tsunami, then help may arrive. In the event of a local tsunami, it is unlikely that anyone will help you, so make a plan and be prepared!
3. Stay away from potentially hazardous areas until you receive an ALL CLEAR from local officials. Tsunamis often follow river channels, and dangerous waves can persist for several hours. Local officials must inspect all flooded or earthquake-damaged structures before anyone can go back into them.
4. After evacuation, check with local emergency officials if you think you have special skills and can help, or if you need assistance locating lost family members.

*Assembly areas  are shown on the map. Do not confuse Assembly Areas with Evacuation Centers, which are short-term help centers set up after a disaster occurs.

Lincoln County *Preparedness*

Because of its location, citizens of Lincoln County should be prepared in advance for two specific disasters: earthquakes and tsunamis.

Emergency services cannot protect you from the next earthquake or tsunami. But you can greatly reduce your risks by taking some simple steps and being prepared.

EARTHQUAKE PREPARATION

Anchor and secure heavy appliances, furniture and glass objects to wall studs and/or other furniture items.

Know how to turn off water, gas and electricity and have the tools needed to do so.

Tie a bag next to your bed with shoes, extra glasses, gloves, poncho, flashlight or headlamp so you are ready to evacuate once the shaking stops.

Have a 3-5 day kit in your car in case you need to use it as a place of shelter until the aftershocks subside.

EARTHQUAKE RESPONSE – IF YOU FEEL AN EARTHQUAKE
Drop, cover and hold on until after the shaking stops, then evacuate outside to survey damages to the building.

If indoors, get under a sturdy table, hold on and be prepared to move with the table.



www.OregonTsunami.org

may be coming

• **Wait** for an “all clear” signal



Preparedness

If in bed, stay in the bed and protect your head with a pillow.

If outdoors, find a clear spot away from buildings and trees and stay until the shaking stops.

If in a vehicle, pull over to a clear location until shaking stops.

Expect and be ready for aftershocks that could last for days after the main shock.

TSUNAMI PREPAREDNESS AND RESPONSE

A tsunami is a series of sea waves, usually caused by a displacement of ocean floor by an undersea earthquake. As tsunamis enter shallow water near land, they increase in height and can cause great loss of life and property damage.

When at the coast, know the distant and local tsunami evacuation routes for low lying areas; look for educational signs at beach entry areas and tsunami assem-

bly area points.

A distant tsunami will take 4 or more hours to come on shore and you will feel no earthquake. The tsunami will generally be smaller than that from a local earthquake. Typically, there is time for an official warning from our Lincoln County Lincoln Alerts and the National Warning Center to evacuate to safety.

A local tsunami can come on shore within 15-20 minutes after the earthquake before there is time for an official warning from the national warning system.

Ground shaking may be the only warning you have, so evacuate quickly to high ground out of the local tsunami zone.

Do not return until the alert has been canceled and emergency officials have advised that it's safe to return.

Source: Lincoln County Sheriff's Office

**Proudly keeping
Lincoln County
in Good Hands**



Shane Isham | 541-994-3600

2730 NE Highway 101

I'm always here with local advice you can trust.

Living in Lincoln County can be expensive, but I'm here to help you find ways to save. I'll help you find the right amount of coverage specific to your needs to keep more of your hard-earned money in your wallet. Give me a call today.



Allstate

You're in good hands.

Subject to terms, conditions and availability.
Allstate Fire and Casualty Insurance Co. ©
2020 Allstate Insurance Co.

11925003





TSUNAMI EVACUATION MAP LINCOLN CITY-NORTH



MAP SYMBOLS / SIMBOLOS DEL MAPA

- Evacuation route / Ruta de evacuación
- Assembly area / Área reunión
- Bridge / Puente
- School / Escuela
- Fire department / Bomberos
- Hospital / Hospital
- Elevation, in feet / Elevación, en pies

SCALE / ESCALA
0.25 mile / 0.25 km

NOTES
This hazard evacuation map was developed by ODOT and the Oregon Department of Emergency Services (ODES) for the purpose of providing the most effective means for the public to understand the evacuation routes and assembly areas for a tsunami. The information shown is based on the best available information and is not intended to be used as a guarantee of safety.

IF YOU FEEL AN EARTHQUAKE:
• Drop, cover, and hold
• Move immediately inland to higher ground
• Do not wait for an official warning

SI USTED SIENTE EL TEMBLOR:
• Tirese al suelo, cúbrase, y espere
• Déjase de inmediato a un lugar más alto que el nivel del mar
• No espere por un aviso oficial

ASSEMBLY AREA / ÁREA REUNIÓN

OUTSIDE HAZARD AREA: Evacuate to this area for all tsunami warnings or if you feel an earthquake.

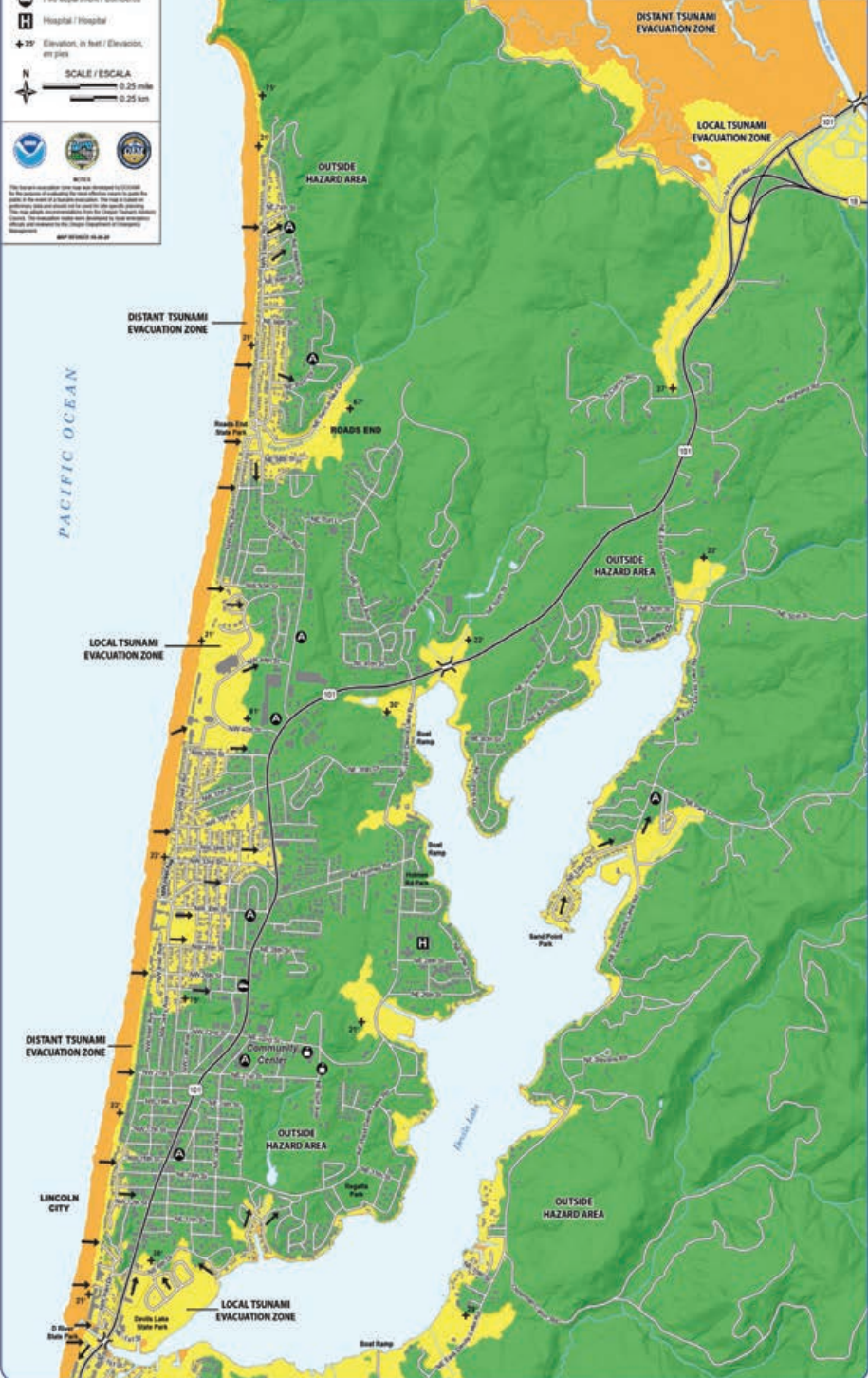
LOCAL CASCADIA EARTHQUAKE AND TSUNAMI: Evacuation zone for a local tsunami from an earthquake at the Oregon coast.

DISTANT TSUNAMI: Evacuation zone for a distant tsunami from an earthquake far away from the Oregon coast.

ZONA DE PELIGRO EXTERIOR: Evacue a esta área para todas las advertencias del maremoto o si usted siente un temblor.

MAREMOTO LOCAL (terremoto de Cascadia): Zona de evacuación para un tsunami local de un terremoto cerca de la costa de Oregon.

MAREMOTO DISTANTE: Zona de evacuación para un tsunami distante de un terremoto lejos de la costa de Oregon.



TSUNAMI EVACUATION MAP LINCOLN CITY-SOUTH



MAP SYMBOLS / SIMBOLOS DEL MAPA

- Evacuation route / Ruta de evacuación
- Assembly area / Área reunión
- Bridge / Puente
- School / Escuela
- Fire department / Bomberos
- Law enforcement / Policía
- Elevation, in feet / Elevación, en pies

SCALE / ESCALA
0.25 mile / 0.25 km

NOTES
This hazard evacuation map was developed by ODOT and the Oregon Department of Emergency Services (ODES) for the purpose of providing the most effective means for the public to understand the evacuation routes and assembly areas for a tsunami. The information shown is based on the best available information and is not intended to be used as a guarantee of safety.

IF YOU FEEL AN EARTHQUAKE:
• Drop, cover, and hold
• Move immediately inland to higher ground
• Do not wait for an official warning

SI USTED SIENTE EL TEMBLOR:
• Tirese al suelo, cúbrase, y espere
• Déjase de inmediato a un lugar más alto que el nivel del mar
• No espere por un aviso oficial

ASSEMBLY AREA / ÁREA REUNIÓN

OUTSIDE HAZARD AREA: Evacuate to this area for all tsunami warnings or if you feel an earthquake.

LOCAL CASCADIA EARTHQUAKE AND TSUNAMI: Evacuation zone for a local tsunami from an earthquake at the Oregon coast.

DISTANT TSUNAMI: Evacuation zone for a distant tsunami from an earthquake far away from the Oregon coast.

ZONA DE PELIGRO EXTERIOR: Evacue a esta área para todas las advertencias del maremoto o si usted siente un temblor.

MAREMOTO LOCAL (terremoto de Cascadia): Zona de evacuación para un tsunami local de un terremoto cerca de la costa de Oregon.

MAREMOTO DISTANTE: Zona de evacuación para un tsunami distante de un terremoto lejos de la costa de Oregon.



Preparedness

EARTHQUAKE

An earthquake is a sudden release of pent-up energy along a fault line in the earth's crust. Without warning, the ground under your feet will begin to shake and roll.

A timely response is critical. Gas leaks may have occurred, which could lead to fire and explosion. People may have been injured. What you do in the first hour following an earthquake can save lives, reduce the severity of injuries, and save property.

WHAT TO DO:

1. Check on the well-being of your loved ones.
2. Dress for safety- protect your head, hands, and feet. Sturdy shoes will protect your feet from broken glass. Leather gloves will protect your hands from sharp debris. A hard hat will protect your head from fallen objects, like chimney bricks.
3. Check your natural or propane gas, and shut it off

if necessary.

4. Shut off your water at the house master shut-off valve. If water pipes have broken, this will help keep the water in your water heater safe from pollutants. (See Month #8- Utility Safety, for more information.)
5. Post an OK/Help card in your front window or on your front door. If you -or a neighbor- have been injured and are going into shock, time is critical. This signals your status to your neighbors and helps prioritize your response activity.
6. Place your fire extinguishers outside on the sidewalk or street edge so they are visible and available for immediate use should anyone in the neighborhood experience fire. Time is critical. In a disaster, 9-1-1 fire responders will likely be unavailable.

TSUNAMI

- Tsunamis that strike the Washington Coast are most often caused by earthquakes. These earthquakes might occur far away or near where you live.
- Some tsunamis can be very large. In coastal areas their height can be as great as 30 feet or more (100 feet in extreme cases), and they can move inland several hundred feet.
- A tsunami consists of a series of waves. Often the first wave may not be the largest. The danger from a tsunami can last for several hours after the arrival of the first wave.
- Tsunamis move faster than a person can run.
- Sometimes a tsunami causes the water near the shore to recede, exposing the ocean floor.
- The force of some tsunamis is enormous. Large rocks weighing several tons along with boats and other debris can be moved inland hundreds of feet

by tsunami wave activity. Homes and other buildings are destroyed. All this material and water move with great force and can kill or injure people.

WHAT TO DO:

If you are at home and hear there is a tsunami warning, make sure your entire family is aware of the warning. Evacuate immediately.

If you are at the beach or near the ocean and you feel the earth shake, move immediately to higher ground, DO NOT wait for a tsunami warning to be announced.

STORING EMERGENCY SUPPLIES

Chances are you will have to rely upon supplies you have available in your home for at least the first three days following any major disaster.

Store these items in something that is portable and easily carried, like a plastic tub with a tight-fitting lid. In the event of fire or rapid evacuation, you'll appreciate having more than just the clothes on your back. The container should be able to withstand moisture, insects, and some abuse when the quake happens. If you have a large family, several smaller tubs may be easier to carry than one large container.

Place items in plastic bags to protect against condensation, which causes mildew and rust. The bags newspapers come in are a good choice - these can later be used for disposing of waste.

Locate these supplies as close to your primary house exit as possible. You may have to find it in the dark or after the upheaval of an earthquake.

WATER

Keep at least a three-day supply of water for each person in your household. Two-liter soda pop bottles



Preparedness

work great. That means six two-liter bottles per person. (See pages 6- 7 for more information on storing an emergency supply of water.)

FOOD

Store at least a three-day supply of non-perishable food. Select foods that require no refrigeration or cooking, and little or no water.

- canned meats, fruits, and vegetables
- canned juices and soups
- high energy foods- peanut butter, granola bars, trail mix, beef jerky
- “comfort” foods- cookies, hard candy, etc.

FIRST AID SUPPLIES

- sterile 4” adhesive bandages
- sterile 4” x 4” gauze pads
- 4” rolled gauze bandages
- large triangular bandages
- butterfly bandages
- adhesive tape
- scissors and tweezers
- moistened towelettes
- bar soap
- latex gloves
- aspirin & non-aspirin pain reliever
- antacid
- anti-diarrhea medication
- insect repellent
- hydrogen peroxide to disinfect wounds
- antibiotic ointment to dress wounds
- sunscreen
- safety pins
- needle & thread
- plastic bags
- sanitary pads
- instant cold packs
- pocket knife
- splinting materials

TOOLS & SUPPLIES

- paper cups, plates, and plastic utensils
- battery-operated AM radio
- extra batteries
- flashlight
- non-electric can opener
- ABC fire extinguisher
- whistle
- toilet paper and towelettes
- liquid soap
- feminine supplies
- roll of plastic and duct tape to seal broken windows

SPECIAL ITEMS

- extra eye glasses
- prescription drugs and medications
- baby diapers, food, and formula
- a family picture
- games and books
- copies of insurance policies
- bank account numbers
- inventory of valuables
- family records
- contact lens solution
- denture adhesive

CLOTHING & BEDDING

- one complete change of clothes
- blankets or sleeping bags
- mylar blankets
- sturdy shoes
- warm socks
- hat and gloves

Preparing for disasters is a long-term goal. To make this task manageable, choose just two or three items that you will get each month.

ITEMS TO BUY

Month 1
Item 1 _____ Item 2 _____

Month 2
Item 1 _____ Item 2 _____

Month 3
Item 1 _____ Item 2 _____

Month 4
Item 1 _____ Item 2 _____

Month 5
Item 1 _____ Item 2 _____

Month 6
Item 1 _____ Item 2 _____

Plan to rotate the items in your kit annually. This includes making sure the clothes you have stored still fit!



GLASS RECYCLING

DEPOTS IN LINCOLN COUNTY



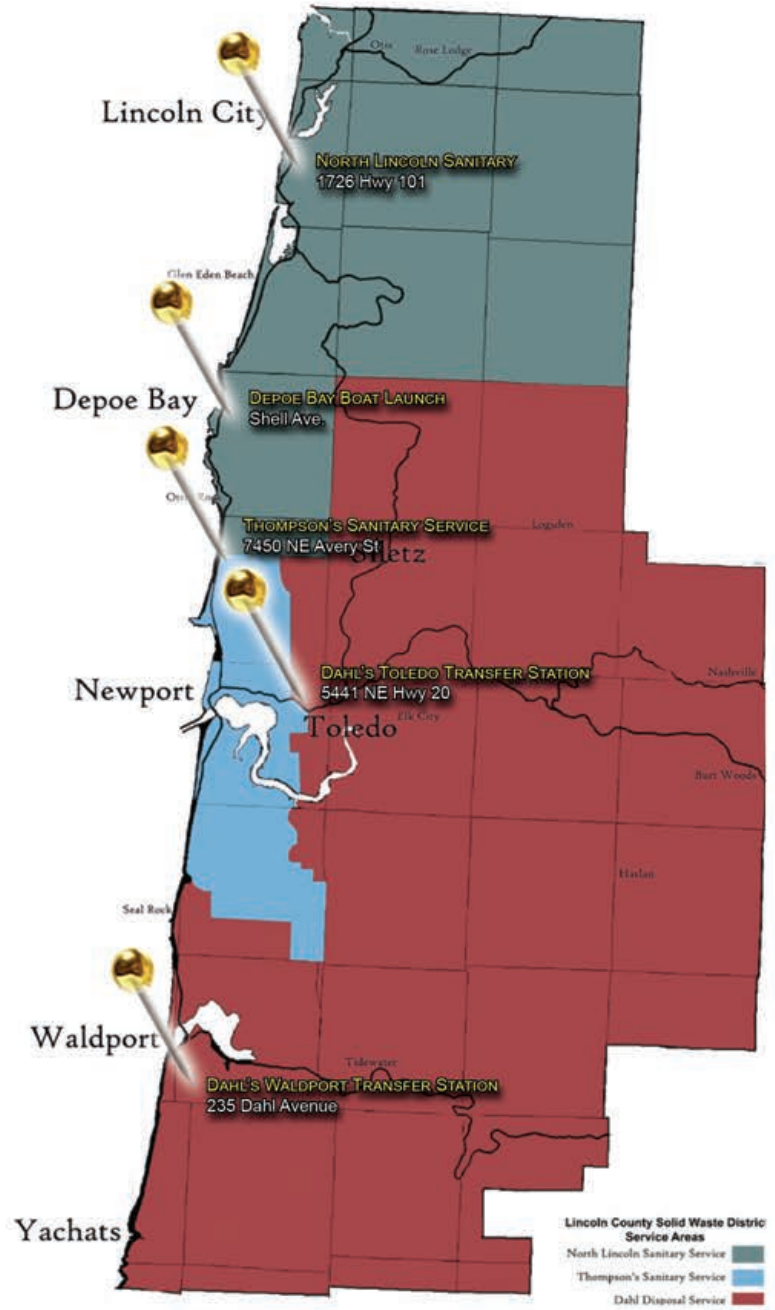
541-336-2932



941-994-5555



541-265-7249



Coastal Character is the marquee of the Lincoln County Sustainability Program and is a recognition of the mindful community members (residents, businesses, and visitors alike) who are making a difference (locally, naturally, and sustainably) in Lincoln County and the world around us.

Preparedness

SANITATION

The lack of sanitation facilities following major earthquakes can quickly create secondary problems unless basic guidelines are followed. If the water lines are damaged, or if damage is suspected, do not flush the toilet.

Avoid digging holes in the ground and using these. Untreated raw sewage can pollute fresh ground water supplies. It also attracts flies and promotes the spread of diseases.

- Store a large supply of heavy-duty plastic bags, twist ties, disinfectant, and toilet paper.
- A good disinfectant that is easy to use is a solution of one-part liquid bleach to ten-parts water.
- Dry bleach is caustic and not safe for this type of use.
- If the toilet is not able to be flushed, it can still be used. This is less stressful for most people than using some other container. Remove all the bowl water. Line bowl with a heavy-duty plastic bag. When finished, add a small amount of deodorant or disinfectant, securely tie the bag and dispose of it in a large trash can lined with a sturdy bag and a tight fitting lid.
- Eventually, the city will provide a means to dispose of these bags.
- Portable camp toilets, small trash cans, or sturdy buckets lined with heavy-duty plastic bags can be used. Those with tight fitting lids are best.
- Large ziplock plastic bags and toilet paper should be kept at work and in the car for use if you are away from home. These can be wrapped in newspaper in preparation for future disposal.
- Always keep a week's supply of food and water for

your pet on hand.

- Toilet bowl water is an excellent supply of water for pets following an earthquake

EMERGENCY INFORMATION

Obtain a battery-powered radio and a supply of extra batteries.

Identify the primary Emergency Alert Station (EAS) for your area and write it here:

READY TO RESPOND - DAY OR NIGHT

When disaster strikes, it may be difficult to think as rationally and as quickly as you would like. The more procedures you have in place, and the easier they are to remember and implement. We recommend you keep these basic response supplies under the bed.

AT A MINIMUM

Keep a pair of sturdy shoes to protect your feet by each loved one's bed at all times.

CRITICAL UNDER-THE-BED ITEMS

- Sturdy shoes to protect your feet from broken glass
- Work gloves, preferably leather to protect your hands from broken glass
- Hardhat to protect you from falling objects like chimney bricks and downed trees and branches
- A flashlight and light sticks are essential for a night-time response
- An OK / I Need Help card found either in the MYN (Map Your Neighborhood) handout available from your local office of Emergency Management or one

that you prepare yourself

- A few Band-aids to hang the OK/ I Need Help card in the window or on the front door



Your Lincoln County Neighbors Need You!

Senior Health Insurance Benefits Assistance (SHIBA) utilizes community volunteers to educate Oregonians with Medicare.

The SHIBA program offers free, local health insurance options counseling and assistance to people with Medicare and their families. We need YOU to help us serve those in need in the area!

SHIBA counselors help people in their community understand their Medicare insurance choices and their rights. They do this by offering one-on-one counseling, classes, and referrals.

Counselors:

- * Enjoy helping others and are empathetic
- * Protect client confidentiality
- * Have no conflict of interest
- * Have computer skills or are willing to learn
- * Work well alone and in a team

If interested in either program, please call the AmeriCorps Seniors office at 541-574-2684 or email aseniors@ocwcog.org to request an application.



AmeriCorps Seniors volunteers in OCWCOG's Senior Companion Program offer long term assistance to homebound seniors.

OCWCOG's Senior Companion Program is recruiting volunteers in the Lincoln County area! The AmeriCorps Seniors volunteers help seniors live independently in their own home. These

service assignments could include respite, socializing with peers, and providing transportation to doctor appointments. Volunteers receive an hourly tax exempt stipend and mileage reimbursement for their service.

You may qualify to be an AmeriCorps Seniors volunteer if you are 55 years of age or older, qualify as having a lower income, and are able to serve five hours or more each week.

Senior Companion Volunteers **do not**:

- * Provide services usually performed by a home health worker
- * Handle money or medication
- * Perform household repairs or major cleaning
- * Do any heavy lifting

AmeriCorps is the federal agency connecting individuals and organizations through service and volunteering to tackle the nation's most pressing challenges.





16761- Depoe Bay, Oregon - Oregon Coast Highway

1940S: DEPOE BAY BUSINESS STRIP

JUNE 2022

SUNDAY	MONDAY	TUESDAY	WEDNESDAY	THURSDAY	FRIDAY	SATURDAY
			1	2	3	4
5	6	7	8	9	10	11
12	13	14	15	16	17	18
19	20	21	22	23	24	25
FATHER'S DAY						
26	27	28	29	30		



DODECA FISHING BOAT - AT HARBOR DOCK, TAFT, OREGON. 14727

1940S: TAFT DOCK AT SILETZ BAY

JULY 2022

SUNDAY	MONDAY	TUESDAY	WEDNESDAY	THURSDAY	FRIDAY	SATURDAY
					1	2
3	4	5	6	7	8	9
	INDEPENDENCE DAY					
10	11	12	13	14	15	16
17	18	19	20	21	22	23
24	25	26	27	28	29	30
31						



Charlotte Lehto

When Life Changes - Your - Insurance should do the same.

Call us today for a review in your coverage.

541-994-2884

clehto@farmersagent.com

Visit our Website at: www.CharlotteLehto.com

4270 NE Highway 101, Lincoln City, OR 97367

Your friends in the insurance business



THE INSURANCE STORE NW
HealthCare Planning for Life





Serving Lincoln County

Professional Dedication • Excellence • Commitment to Client Satisfaction



Taylor & Taylor Realty Co.

Serving you since 1978



541-994-9111 • 800-462-0197 • 3891 NW Hwy 101, Lincoln City • www.realestatelincity.com



EARLY 1940S: TAFT ALONG PACIFIC AVE., NOW SW 51ST



1930S: DELAKE SCHOOL, NOW THE CULTURAL CENTER

AUGUST 2022

SUNDAY	MONDAY	TUESDAY	WEDNESDAY	THURSDAY	FRIDAY	SATURDAY
	1	2	3	4	5	6
7	8	9	10	11	12	13
14	15	16	17	18	19	20
21	22	23	24	25	26	27
28	29	30	31			

SEPTEMBER 2022

SUNDAY	MONDAY	TUESDAY	WEDNESDAY	THURSDAY	FRIDAY	SATURDAY
			1	2	3	4
5	6	7	8	9	10	11
LABOR DAY						
12	13	14	15	16	17	18
19	20	21	22	23	24	25
26	27	28	29	30		



Charlotte Lehto

Turning 65? Make Medicare a piece of cake

Schedule your free no obligation review

541-994-2884

Charlotte@insurancestores.com

Visit our Website at: www.CharlotteLehto.com

4270 NE Highway 101, Lincoln City, OR 97367

Your friends in the insurance business



THE INSURANCE STORE NW
HealthCare Planning for Life





Oregon weather is relentless on our coastal homes.
We are here to help!

Accepting these projects:
Siding and windows
Decks and patios

Ask us about:
Custom Home Builds and Pole Barns
Dedicated to quality. Over 30 years experience

Email questions info@gagecontractors.com

503.919.0764
CCB# LBPR 240117 Lead Certified Renovator



Beauty.



Safety.



Comfort.





1924: SILETZ TRIBAL CEREMONY, OCEANLAKE

OCTOBER 2022

SUNDAY	MONDAY	TUESDAY	WEDNESDAY	THURSDAY	FRIDAY	SATURDAY
						1
2	3	4	5	6	7	8
9	10	11	12	13	14	15
16	17 INDIGENOUS PEOPLES DAY	18	19	20	21	22
23	24	25	26	27	28	29
30 HALLOWEEN	31					



LATE 1930S: DEVIL'S LAKE REGATTA, NOW REGATTA RARK LOCATION

NOVEMBER 2022

SUNDAY	MONDAY	TUESDAY	WEDNESDAY	THURSDAY	FRIDAY	SATURDAY
		1	2	3	4	5
6	7	8	9	10	11	12
13	14	15	16	17	18 VETERAN'S DAY	19
20	21	22	23	24	25	26
27	28	29	30	THANKSGIVING		



Charlotte Lehto

Turning 65? If so, you are officially a speed limit and eligible for Medicare.

We make enrolling in Medicare a piece of cake!



541-994-2884



Charlotte@insurancestores.com

Visit our Website at: www.CharlotteLehto.com

4270 NE Highway 101, Lincoln City, OR 97367

Your friends in the insurance business



THE INSURANCE STORE NW
HealthCare Planning for Life



For You
and Your
Home

OREGON'S
FINEST
GARDENER
LANDSCAPE MAINTENANCE SERVICE

No One
Works Harder
than Oregon's
Finest Gardener

541.300.2619

Call today for service or your free quote.



Ask us about

TEARDOWNS

That's a fancy term for fixing up "overgrown landscapes." We love to help you remember what it is supposed to look like! Let us do the heavy lifting. You will feel great!

HAIRCUTS FOR HEDGES

Trimming & Pruning
Just like your barber we understand how much to trim and know being precise in the cut matters.

WELCOME BACK MOWING

Nothing says welcome home better than a freshly mowed and edged lawn. Have a vacation from chores when you return from vacation.

All maintenance plans are crafted to suit your individual needs and property.
OregonFinestGardener.com



LATE 1920S: ROOSEVELT COAST MILITARY HIGHWAY, NOW US HIGHWAY 101 AT NELSCOTT

DECEMBER 2022

SUNDAY	MONDAY	TUESDAY	WEDNESDAY	THURSDAY	FRIDAY	SATURDAY
				1	2	3
4	5	6	7	8	9	10
11	12	13	14	15	16	17
18	19	20	21	22	23	24
25	26	27	28	29	30	31
CHRISTMAS						



1939: TAFT AT 51ST AND US HIGHWAY 101

JANUARY 2023

SUNDAY	MONDAY	TUESDAY	WEDNESDAY	THURSDAY	FRIDAY	SATURDAY
1	2	3	4	5	6	7
NEW YEAR'S DAY	8	9	10	11	12	13
14	15	16	17	18	19	20
21	M.L. KING DAY	22	23	24	25	26
27	28	29	30	31		



Charlotte Lehto

Knowledge is power so take your time and discover the great benefits Medicare plans offer, then choose the right plan for your budget and lifestyle. Call today for an appointment.

541-994-2884

Charlotte@insurancestores.com

Visit our Website at: www.CharlotteLehto.com

4270 NE Highway 101, Lincoln City, OR 97367

Your friends in the insurance business



THE INSURANCE STORE NW
HealthCare Planning for Life





1120 SE 1st St, Lincoln City, Oregon, 97367 | (541) 994-8935 | www.lincolncityfamilydental.com



We listen. We care. We explain.

Trusted & Affordable Dental Care for the Entire Family

Treatments

Exams & Cleaning
Children's Dentistry
Crowns & Bridge Work
Cosmetic Dentistry
Orthodontics

Teeth Whitening
Dental Sleep Medicine
Peridontal Therapy
Dental Implants
Extractions

Mouth Guards
Botox
Invisalign
Complete Full-Mouth Rehabilitation
TMJ (Jaw Pain) Therapy

Wednesday - Thursday 8-5, Tuesday & Friday by Appointment Only



1929: HENDRICKS PEA FARM, ROADS END

FEBRUARY 2023

SUNDAY	MONDAY	TUESDAY	WEDNESDAY	THURSDAY	FRIDAY	SATURDAY
			1	2	3	4
5	6	7	8	9	10	11
12	13	14	15	16	17	18
	VALENTINE'S DAY					
19	20	21	22	23	24	25
PRESIDENT'S DAY						
26	27	28				



1940S: LOG TRUCK PARADE, TAFT

MARCH 2023

SUNDAY	MONDAY	TUESDAY	WEDNESDAY	THURSDAY	FRIDAY	SATURDAY
			1	2	3	4
5	6	7	8	9	10	11
12	13	14	15	16	17	18
AWLHIGHT SAVINGS					ST. PATRICK'S DAY	
19	20	21	22	23	24	25
26	27	28	29	30	31	





Your *local* lender

**You're one step closer to home. A walk on the beach. Family close at hand.
Keepsakes on the mantel. That's home. We'll help you get there.**

Call us today to talk about how we can help you!

Andrea Price

NMLS# 983751

(541) 992-2863

aprice@evergreenhomeloans.com

Jamie Fritzsche

NMLS# 1030946

(541) 223-2813

jfritzsche@evergreenhomeloans.com



541-418-5010

www.evergreenhomeloans.com/lincoln-city



© 2022 Evergreen Home Loans and Evergreen are the trademarks or registered trademarks of Evergreen Moneysource Mortgage Company® NMLS ID 3182. Trade/service marks are the property of Evergreen Home Loans. All rights reserved. Licensed under the OR Consumer Finance Act ML-3213.0322



1935: DORCHESTER HOUSE, WECOMA

APRIL 2023

SUNDAY	MONDAY	TUESDAY	WEDNESDAY	THURSDAY	FRIDAY	SATURDAY
						1
2	3	4	5	6	7	8
9	10	11	12	13	14	15
EASTER						
16	17	18	19	20	21	22
23	24	25	26	27	28	29
30						



1930S: CUTLER CITY

MAY 2023

SUNDAY	MONDAY	TUESDAY	WEDNESDAY	THURSDAY	FRIDAY	SATURDAY
	1	2	3	4	5	6
7	8	9	10	11	12	13
14	15	16	17	18	19	20
MOTHER'S DAY						
21	22	23	24	25	26	27
28	29	30	31			
	MEMORIAL DAY					



SUDOKU

DIFFICULTY RATING: ★★★★★

			8	6			9	
					3	7		
		3	7	9	2	1	8	4
	1			7			2	5
6	5	2		8		3	1	7
3	7			1			4	
4	8	5	6	2	7	9		
		6	9					
	9			3	8			

5/23

© 2022 Dist. by Andrews McMeel Syndication for UFS

PREVIOUS SOLUTION

1	6	7	5	2	3	9	8	4
4	3	9	7	8	1	5	6	2
8	5	2	9	4	6	7	1	3
5	1	4	2	3	8	6	7	9
6	9	3	4	5	7	8	2	1
2	7	8	1	6	9	3	4	5
3	8	1	6	9	4	2	5	7
9	4	5	8	7	2	1	3	6
7	2	6	3	1	5	4	9	8

HOW TO PLAY:

Each row, column and set of 3-by-3 boxes must contain the numbers 1 through 9 without repetition.

ACROSS

- 1 Ready to eat
- 5 Watch chain
- 8 Connecticut campus
- 12 Not defy
- 13 Ms. Lupino
- 14 Hydrox rival
- 15 Orthodontist's concern
- 16 MS readers
- 17 Affirmative votes
- 18 Family cars
- 20 Male raccoon
- 21 Free from
- 22 Flower lover
- 23 Warmth
- 26 Thataway
- 29 Leak slowly
- 30 Word processor choice
- 31 Folks
- 33 Film producer — Roach
- 34 As it —
- 35 "Gross!"
- 36 Widen

38 Twangy

- 39 Pub pint
- 40 Vigor's partner
- 41 Kind of mail
- 43 Reassured
- 46 Bath powder
- 47 Neutral shade
- 48 Midterm or final
- 50 One, in Munich
- 51 Footed vase
- 52 Mathematician — Descartes
- 53 Mournful wail
- 54 Princess Di's niece
- 55 Con game

DOWN

- 1 Be a thief
- 2 Sacred bird of Egypt
- 3 Seeger or Davidson
- 4 Pupil soother?
- 5 Villain

Answer to Previous Puzzle

F	E	T	A		P	O	D		K	A	T	O	
A	V	I	S		O	B	I		A	T	O	M	
T	E	A	S	P	O	O	N		Y	A	W	N	
			A	L	L	E	G	E		L	E	I	
L	I	B	Y	A					C	A	L	L	A
A	G	O		N	A	C	H	O	S				
I	O	N	S		M	R	I		E	W	E	R	
T	R	E	E		E	A	R		A	I	D	A	
			L	O	N	G	E	R		G	I	G	
A	N	K	L	E					E	A	S	E	S
Z	E	N		R	A	C	I	E	R				
T	A	O	S		C	A	R	D	G	A	M	E	
E	T	C	H		H	M	O		U	R	A	L	
C	O	K	E		Y	E	N		E	N	V	Y	

- 6 Probabilities
- 7 College degs.
- 8 Vacillated
- 9 Survey finding
- 10 Nonsense writer
- 11 Dawn goddess
- 19 Empty space
- 20 Made crooked
- 22 Skeletal material
- 23 Embers, finally
- 24 Hit the books
- 25 Casual eatery
- 26 Nostalgic time
- 27 Barely gets by
- 28 Costa —
- 30 Big celebration
- 32 Calgary Flames org.
- 34 Go on foot
- 35 Whines
- 37 Surgical knives
- 38 Goose egg
- 40 "Wheel" turner
- 41 Jug or slammer
- 42 Radius's companion
- 43 Give a darn
- 44 Corp. biggie
- 45 Delany or Carvey
- 46 Orange pekoe
- 47 Butter container
- 49 Dues payer, for short

1	2	3	4		5	6	7		8	9	10	11
12					13				14			
15					16				17			
	18			19				20				
			21			22						
23	24	25			26				27	28		
29					30				31		32	
33				34					35			
	36		37					38				
			39			40						
	41	42			43				44	45		
46					47				48			49
50					51				52			
53					54				55			

5-23

© 2022 UFS, Dist. by Andrews McMeel Syndication for UFS



SUDOKU

DIFFICULTY RATING: ☆☆☆☆☆

6				9	5	4		2
	1	4	2					5
		9	4	1	6			3
	3	1		4		6		
9	6			8			5	4
		8		6		2	3	
8			9	5	4	3		
1					3	5	9	
3		5	6	2				7

5/24

© 2022 Dist. by Andrews McMeel Syndication for UFS

PREVIOUS SOLUTION

1	2	7	8	6	4	5	9	3
8	4	9	1	5	3	7	6	2
5	6	3	7	9	2	1	8	4
9	1	4	3	7	6	8	2	5
6	5	2	4	8	9	3	1	7
3	7	8	2	1	5	6	4	9
4	8	5	6	2	7	9	3	1
7	3	6	9	4	1	2	5	8
2	9	1	5	3	8	4	7	6

HOW TO PLAY:

Each row, column and set of 3-by-3 boxes must contain the numbers 1 through 9 without repetition.

ACROSS

- 1 West of Hollywood
- 4 Bank feature
- 8 Coyote's plaint
- 12 Out caller
- 13 Eventful periods
- 14 A woodwind
- 15 Typo
- 17 Fuzzy fruit
- 18 Slept noisily
- 19 Had some lunch
- 21 Comet, to an ancient
- 22 Striving to win
- 26 Saffron dish
- 30 — compos mentis
- 31 Part of MHz
- 34 "The Raven" penner
- 35 Verdi masterpiece
- 36 Monsieur's airport
- 37 1040 agcy.
- 38 Goulash

- 39 Tell an untruth
- 40 Acid in vinegar
- 42 Bopper lead-in
- 44 Two together
- 47 Connections
- 49 Sell to consumers
- 51 Big handbag
- 54 Happiness
- 56 A Baldwin
- 57 Traipse
- 58 Green shade
- 59 Kind of pool
- 60 Orange veggies
- 61 Psychic's power, for short

DOWN

- 1 Football corsages
- 2 Protein-building acid
- 3 — salts
- 4 Williams of tennis

Answer to Previous Puzzle

R	I	P	E		F	O	B		Y	A	L	E
O	B	E	Y		I	D	A		O	R	E	O
B	I	T	E		E	D	S		Y	E	A	S
	S	E	D	A	N	S		B	O	A	R	
			R	I	D		B	E	E			
A	R	D	O	R		Y	O	N	D	E	R	
S	E	E	P		F	O	N	T		K	I	N
H	A	L		W	E	R	E		Y	E	C	H
	D	I	L	A	T	E		N	A	S	A	L
			A	L	E		V	I	M			
	J	U	N	K		C	A	L	M	E	D	
T	A	L	C		T	A	N		E	X	A	M
E	I	N	E		U	R	N		R	E	N	E
A	L	A	S		B	E	A		S	C	A	M

- 5 Parched
- 6 Season ticket holder
- 7 Is, to Pedro
- 8 Cornball
- 9 Kimono fastener
- 10 Get lots of applause
- 11 Don Ho's neckwear
- 16 Settle early
- 20 Water power org.
- 23 Put one's foot —
- 24 Knot
- 25 Nibble
- 27 Colossal
- 28 Traditional learning
- 29 For fear that
- 31 Drop feathers
- 32 Great Lakes port
- 33 Unbounded joy
- 35 Cravat cousins
- 40 Novelist — Rand
- 41 Girders (hyph.)
- 43 Sibling's daughter
- 45 Brownish-gray
- 46 Adds to staff
- 48 Agile
- 49 Widen a hole
- 50 Spring
- 51 Closing line
- 52 Pamplona shout
- 53 Finger count
- 55 Mauna —

1	2	3		4	5	6	7		8	9	10	11
12				13					14			
15				16					17			
18							19	20				
	21							22		23	24	25
				26		27	28	29		30		
31	32	33			34				35			
36					37				38			
39				40					41			
42				43					44		45	46
				47		48		49				50
51	52	53			54	55						
56					57					58		
59					60					61		

5-24

© 2022 UFS, Dist. by Andrews McMeel Syndication for UFS



SUDOKU

DIFFICULTY RATING: ☆☆☆☆☆

			8	4	7	9	3	
						6		
				3	6			2
2	5		7					9
7			1	5	3			6
3					2		7	5
9			4	7				
		6						
	3	8	6	2	9			

5/25

© 2022 Dist. by Andrews McMeel Syndication for UFS

PREVIOUS SOLUTION

6	8	3	7	9	5	4	1	2
7	1	4	2	3	8	9	6	5
5	2	9	4	1	6	7	8	3
2	3	1	5	4	9	6	7	8
9	6	7	3	8	2	1	5	4
4	5	8	1	6	7	2	3	9
8	7	6	9	5	4	3	2	1
1	4	2	8	7	3	5	9	6
3	9	5	6	2	1	8	4	7

HOW TO PLAY:

Each row, column and set of 3-by-3 boxes must contain the numbers 1 through 9 without repetition.

ACROSS

- 1 Sends packing
- 6 Ask too much
- 12 Quantity
- 14 Spat
- 15 Eagle or hawk
- 16 Cat's kittens
- 17 Be billed
- 18 Poem by Keats
- 19 Gift tag word
- 21 Recent (pref.)
- 23 On opposite
- 26 Chaps
- 27 Do something
- 28 Was in control
- 30 Overhead railways
- 31 Quiet sound
- 32 Stage whisper
- 33 Meatloaf servings
- 35 Pacino and Unser
- 37 Even as we speak
- 38 Hayes or Reddy
- 39 Short sleep
- 40 Weep
- 41 Holiday mo.
- 42 Actress Ryan
- 43 "Gotcha!"
- 44 Melodramatic cry
- 46 Unit of work
- 48 Feathers
- 51 Most unusual snakes
- 55 Venomous snakes
- 56 Afternoon snooze
- 57 Of high quality
- 58 Advise against

DOWN

- 1 Rower's need
- 2 Actress Thurman
- 3 Concession
- 4 Private instructor

Answer to Previous Puzzle

M	A	E		S	A	F	E		H	O	W	L
U	M	P		E	R	A	S		O	B	O	E
M	I	S	P	R	I	N	T		K	I	W	I
S	N	O	R	E	D		A	T	E			
	O	M	E	N					V	Y	I	N
			P	A	E	L	L	A		N	O	N
M	E	G	A		P	O	E		A	I	D	A
O	R	L	Y		I	R	S		S	T	E	W
L	I	E		A	C	E	T	I	C			
T	E	E	N	Y					B	O	T	H
			I	N	S				R	E	T	A
T	O	T	E			P	L	E	A	S	U	R
A	L	E	C			R	O	A	M		P	E
G	E	N	E			Y	A	M	S		E	S

- 5 Kind of flurry
- 6 Domed residence
- 7 Household worker
- 8 Heart-wrenching
- 9 Giants hero of yore
- 10 Date regularly
- 11 Do the wrong thing
- 13 Long ditch
- 19 Chopped down
- 20 Markdown sign (2 wds.)
- 22 Flammable gas
- 24 Shrink back
- 25 Felt hat
- 26 Engage, as gear teeth
- 27 Club, briefly
- 28 Talk hoarsely
- 29 Fresh
- 34 Turns into
- 36 Tavern brews
- 42 Like damp rocks
- 43 Think alike
- 45 His and —
- 47 Sudden foray
- 48 Garden hose plastic, for short
- 49 Dogpatch's — Abner
- 50 — — tree
- 52 Fla. hours
- 53 Fr. holy woman
- 54 La Brea — pits

1	2	3	4	5		6	7	8	9	10	11	
12					13		14					
15							16					
				17			18					
	19	20			21	22		23	24	25		
26				27			28				29	
30				31			32					
33			34			35	36			37		
38						39				40		
	41				42			43				
				44	45			46	47			
48	49	50					51			52	53	54
55							56					
57								58				

5-25

© 2022 UFS, Dist. by Andrews McMeel Syndication for UFS



SUDOKU

DIFFICULTY RATING: ☆☆☆☆☆

	5			1				
6			5	9	7			4
		1		8				5
	3	4		6	8			
	1			5				7
			3	2		4	9	
	9			3		2		
	6		2	4	9			8
				7				6

5/26

© 2022 Dist. by Andrews McMeel Syndication for UFS

PREVIOUS SOLUTION

6	2	5	8	4	7	9	3	1
8	4	3	2	9	1	6	5	7
1	9	7	5	3	6	8	4	2
2	5	1	7	6	4	3	8	9
7	8	9	1	5	3	4	2	6
3	6	4	9	8	2	1	7	5
9	1	2	4	7	8	5	6	3
4	7	6	3	1	5	2	9	8
5	3	8	6	2	9	7	1	4

HOW TO PLAY:

Each row, column and set of 3-by-3 boxes must contain the numbers 1 through 9 without repetition.

ACROSS

- 1 To date
- 4 Travel kit item
- 8 Cough syrup meas.
- 12 Actress — Poehler
- 13 Operatic solo
- 14 Kojak's lack
- 15 Pinch
- 16 Truth
- 18 Crack filler
- 20 Job application info
- 21 Hush-hush grp.
- 23 Distort, as data
- 26 Cry of dismay
- 29 Waldheim or Cobain
- 32 A great many
- 34 Ambiance
- 35 Nest egg letters
- 36 Rock's — Fighters
- 37 I-70
- 38 Make lace
- 39 Rover's pal
- 40 Bear's refuge
- 41 Season
- 42 Part of MIT
- 43 Host's plea
- 45 Kyoto cash
- 47 — de plume
- 49 Brat's opposite
- 53 Tastes
- 58 Thai neighbor
- 59 DEA operative
- 60 Issue a summons
- 61 Web suffix
- 62 Running wild
- 63 Imitated
- 64 Go back and forth

DOWN

- 1 Yin complement
- 2 Mideast VIP
- 3 Printing error
- 4 Saguaros
- 5 Natural resource

Answer to Previous Puzzle

O	U	S	T	S		I	M	P	O	S	E	
A	M	O	U	N	T		G	A	I	T	E	R
R	A	P	T	O	R		L	I	T	T	E	R
			O	W	E		O	D	E			
	F	O	R		N	E	O		O	O	F	F
M	E	N		A	C	T		R	U	L	E	D
E	L	S		S	H		A	S	I	D	E	
S	L	A	B	S		A	L	S		N	O	W
H	E	L	E	N		N	A	P		C	R	Y
	D	E	C		M	E	G		A	H	A	
			O	H	O		E	R	G			
P	L	U	M	E	S		R	A	R	E	S	T
V	I	P	E	R	S		S	I	E	S	T	A
C	L	A	S	S	Y		D	E	T	E	R	

- 6 Cosmonaut space lab
- 7 Comes to the plate
- 8 Use your brain
- 9 Prohibit
- 10 Plop down
- 11 Be nosy
- 17 Type of prof
- 19 West Coast sch.
- 22 Watchdog breed
- 24 Dainty
- 25 Forest
- 26 Three feet
- 27 On the fringes
- 28 Small songbirds
- 30 Europe-Asia range
- 31 Tattered
- 33 Honk
- 39 Helsinki native
- 41 Pickle or jam
- 44 Sweater style (hyph.)
- 46 Assuaged
- 48 Transparent mineral
- 50 Mashed potato serving
- 51 Tarzan's title
- 52 Sluggish
- 53 Compilation
- 54 Dawber or Shriver
- 55 In favor of
- 56 — of the iceberg
- 57 Summer, in Quebec

5-26

© 2022 UFS, Dist. by Andrews McMeel Syndication for UFS



Coastal Treasure



The Central Oregon Coast is full of treasure if you know where to seek it out. Chinook Winds Casino Resort in Lincoln City is one great place to explore because the fun and games don't end where the sea grass begins.



Beachfront Accommodations



Challenging 18 Hole Golf Course



Dining choices galore

Chinook Winds
CASINO RESORT



SPORTS
WAGERING

On the beach in Lincoln City | 1-888-CHINOOK | chinookwinds.com

Proudly owned and operated by the Confederated Tribes of Siletz Indians of Oregon.