

THE LAND

Minnesota

Farmfest

PREVIEW



AUGUST 1-3, 2023

DAILY SCHEDULES • LISTING OF EXHIBITORS • SPECIAL EVENTS & FORUMS

PLUS: Win Prizes at The Land's Booth #2401



SOUTHERN MINNESOTA
INITIATIVE FOUNDATION

Land is your legacy. Give your acres for good.

Southern Minnesota Initiative Foundation's (SMIF) **Acres for Good** program allows farm families to donate their land as a charitable gift upon retirement or passing. SMIF will retain the land and keep it in production by a rental arrangement, allowing farmers the peace of mind that their land will continue to be farmed. The net income stream from the land can be used to support southern Minnesota communities well into the future, benefiting either a local Community Foundation, a specific cause or SMIF's programs which support children, entrepreneurs and community vitality in the region.

"I grew up on a small farm outside of Kiester, Minnesota. So for me, farming is personal. The Acres for Good program is an opportunity to invest in local communities while safeguarding your farming legacy for generations to come."

- Tim Penny, President & CEO
Southern Minnesota Initiative Foundation

SMIF's Community Foundations:

- Alden
- Blue Earth
- Byron
- Eagle Lake
- Ellendale
- Elysian
- Harmony
- Henderson
- Houston
- Lanesboro
- Le Sueur
- Lonsdale
- Mabel
- Madison Lake
- Mapleton
- Montgomery
- New Prague
- Pine Island
- Plainview
- Preston
- Rushford
- Sleepy Eye
- Sibley County
- Southland (Mower)
- Spring Valley
- St. Charles
- St. James
- USC School District
- Wabasha-Kellogg
- Wanamingo
- Winthrop
- Zumbro Valley

Many of these Community Foundations serve multiple towns.



LEAVE A LEGACY

Contact Tim Penny at
507-455-3215 or
timp@smifoundation.org

Things to remember for an enjoyable Farmfest

Farmfest is a presentation of IDEAg Group running Aug. 1-3, 2023. The show opens and closes daily at 8:00 a.m. and 4:00 p.m.

The 50-acre site in Redwood County showcases products, services and technologies from over 500 exhibitors and vendors. There will be live product demonstrations, educational sessions and activities for the entire family.

Farmfest Address

Junction of Highways 67 & 13

Gilfillan Estates

Morgan, MN 56266

Directions to Farmfest

From Redwood Falls, follow Hwy 67 East. Show site on left hand side.

From Morgan, Follow Hwy 67 West. Show site on right hand side.

From Jackpot, Junction Follow Hwy 13 South. Show site on right.

Attendees enter the parking lot from highway 67 on First Street.



Park them on the side of the street and don't forget to remove your key when you exit.

Pet Policy

Attendees aren't allowed to bring their pets to the show grounds, with or without leashes. ADA-approved service animals are permitted.

Show Office

The show office is centrally located just off Main and 6th Streets. Look for the giant American flag.

Lost and Found

Lost items will be brought to the show office. Please check in at the show office for lost children. In the event of a lost child, the staff at the show office can make an announcement over the PA system to help locate your

child.

Parking

The Farmfest parking lots, sponsored by CHS, are located on the south and west sides of the show grounds. All attendee parking is free of charge.

Parking Lot Shuttle

The Parking Lot Shuttle is a people-moving trailer which runs through the parking lot during show hours to help you get from your car to the entrances and back again.

Courtesy Shuttle

The Courtesy Shuttle is a complimentary on-site shuttle that circles the show grounds all three days of the show. Attendees can jump on and off at the Farmfest Shuttle Stop signs.

For your safety, please keep your arms and legs inside the on-site and parking lot shuttles. Secure your belongings and hold on to young children to avoid injury.

Golf Carts

Golf carts are available on a first-come, first-served basis. The cart rental is located inside Entrance Gate 2. Golf carts can be reserved by contacting NB Golf Cars at (605) 275-4653. No outside carts are allowed on show grounds.

When operating golf carts, attendees should be aware of surroundings and keep speeds to a minimum. Golf carts only carry as many passengers as there




Admission & Parking

Tickets to the show are \$10 per person at the gate. Kids 17 and under are admitted for free and parking is also free.

Handicapped Parking

Handicapped parking is available in the first row of the south attendee parking lot, just outside Entrance Gate 2.



Anderson Seeds

Of St. Peter, MN

Four Generation Family Seed Company

We offer conventional and traited corn hybrids and traited soybean varieties selected to provide consistent performance across Southern MN and Northern Iowa.

All farmers are important, big or small!

www.andersonseedsmn.com

507-246-5032



Schedule of Events

Tuesday, Aug. 1

8:00 a.m.....	Show Opens
8:30 a.m.–9:20 a.m.....	Strategic Decision Making <i>How to be more strategic in your marketing while minimizing emotional decision making.</i> <i>Sponsored by CHS</i> Wick Buildings Farmfest Center
9:30 a.m.–10:15 a.m.....	Overview of U.S. Ag Exports and Trade Policy <i>Learn the state of U.S. Ag exports and trade policies and how they affect Minnesota agriculture.</i> Wick Buildings Farmfest Center
10:00 a.m.....	Minnesota State Patrol Vehicle Inspection Nuss Truck Booth #830
10:00 a.m.–11:00 a.m.....	Cattle Chute Demos and Company Presentations Livestock Tent
10:30 a.m.–11:50 a.m.....	The New Farm Bill and Other USDA Ag Policy Issues <i>Join the ag leaders of Minnesota in a discussion about the state of the new Farm Bill and how it and other Ag policies will influence agriculture in Minnesota.</i> Wick Buildings Farmfest Center
11:00 a.m.....	Farm Safety Demonstrations UMASH Farm Safety Pavilion
Noon–1:00 p.m.....	Livestock Education Program Livestock Tent
Noon–1:00 p.m.....	Linder Farm Network Noon Show and Ice Cream Wick Buildings Farmfest Center
Noon–1:30 p.m.....	The Singing Cowgirl Networking Lounge
1:00 p.m.....	Kids' Pedal Pull Near Entrance Gate 2

1:15 p.m.–2:40 p.m.....	Understanding "Climate-Smart" Practices & Policies <i>How to practice climate-smart agriculture and the policies to be aware of.</i> Wick Buildings Farmfest Center
1:30 p.m.–2:30 p.m.....	Cattle Chute Demos and Company Presentations Livestock Tent
2:00 p.m.....	Farm Safety Demonstrations UMASH Farm Safety Pavilion
2:00 p.m.....	Minnesota State Patrol Vehicle Inspection Nuss Truck Booth #830
4:00 p.m.....	Show Closes

Wednesday, Aug. 2

8:00 a.m.....	Show Opens
8:00 a.m.–4:00 p.m.....	Mobile Health Screenings UMASH Farm Safety Pavilion
8:00 a.m.–10:00 a.m.....	Minnesota Farm Bureau Pancake Breakfast Wick Buildings Farmfest Center
8:30 a.m.–9:10 a.m.	Changing Hands <i>For farm families planning to transition the farm to the next generation — basic estate and business succession strategies; recent legislative updates; buy-sell concepts and other succession planning strategies.</i> <i>Sponsored by FBFS</i> Wick Buildings Farmfest Center
9:15 a.m.–11:50 a.m.....	U.S. House Ag Committee Farm Bill Listening Session <i>A panel discussion with U.S. House Ag Committee members ready to talk, listen and answer questions about the upcoming Farm Bill.</i> Wick Buildings Farmfest Center
10:00 a.m.....	Minnesota State Patrol Vehicle Inspection Nuss Truck Booth #830
10:00 a.m.–11:00 a.m.....	Cattle Chute Demos and Company Presentations Livestock Tent
10:00 a.m.–noon.....	Meet and greet with Larson Farms Kibble Equipment Lot #531 & #532
10:00 a.m.–1:00 p.m.....	Minnesota Towards Zero Deaths Child Seats Safety Checks
11:00 a.m.....	Farm Safety Demonstrations UMASH Farm Safety Pavilion
Noon–1:00 p.m.....	Linder Farm Network Noon Show Wick Buildings Farmfest Center
Noon–1:00 p.m.....	Livestock Education Program Livestock Tent
Noon–1:00 p.m.....	Meet and greet with Tik Tok's Minnesota Ag Teacher Networking Lounge
1:00 p.m.....	Kids' Pedal Pull Near Entrance Gate 2
1:10 p.m.–2:45 p.m.....	Perspectives on Minnesota Ag and Rural Policy Issues <i>Opening comments from Minnesota Governor Tim Walz</i> Wick Buildings Farmfest Center
1:30 p.m.–2:30 p.m.....	Cattle Chute Demos and Company Presentations Livestock Tent
2:00 p.m.....	Farm Safety Demonstrations UMASH Farm Safety Pavilion
2:00 p.m.....	Minnesota State Patrol Vehicle Inspection Nuss Truck Booth #830
3:00 p.m.–3:45 p.m.....	Data-Driven Insurance Decisions: LRP and Crop Insurance Analyzer Tool to Maximize Risk Mitigation <i>Livestock Risk Protection (LRP) is designed to insure against declining market prices. Also covered in this session is exclusive technology used by AgCountry Insurance Specialists to analyze federal and private insurance policies.</i> <i>Sponsored by AgCountry</i> Wick Buildings Farmfest Center
4:00 p.m.....	Show Closes



**Come see us at
Farmfest Booth C127**

Miss Becky's BBQ

**Brisket, Pulled Pork, Sloppy Joe's
Sides: Potato Salad and Cole Slaw
Strawberry Pie in a Cup, Chocolate Chip Cookies**

Breakfast is served from 6:30 a.m. - 9:30 a.m. daily

507-276-2074

Schedule of Events

Thursday, Aug. 3

7:30 a.m.–10:30 a.m.	University of Minnesota Manure Applicator Certification Program <i>Wick Buildings Farmfest Center</i>
8:00 a.m.–10:30 a.m.	Annie's Project 20th Anniversary Celebration <i>Morton Buildings Lot #422</i>
10:00 a.m.	Minnesota State Patrol Vehicle Inspection <i>Nuss Truck Booth #830</i>
10:00 a.m.–11:00 a.m.	Cattle Chute Demos and Company Presentations
10:45 a.m.–11:50 a.m.	Women in Ag Event and Farmfest Woman Farmer of the Year <i>Ag Economist Doris Mold will address the challenges and opportunities women face. Wick Buildings Farmfest Center</i>
10:45 a.m.	Farm Safety Demonstrations <i>UMASH Farm Safety Pavilion</i>
11:00 a.m.	Kids' Pedal Pull
Noon–1:00 p.m.	Linder Farm Network Noon Show <i>Wick Buildings Farmfest Center</i>
Noon–1:00 p.m.	Livestock Education Program
Noon–2:00 p.m.	Mary Schwartz, Musician <i>Networking Lounge</i>
1:15 p.m.–2:45 p.m.	University of Minnesota Farm Family of the Year Program <i>Wick Buildings Farmfest Center</i>
1:30 p.m.–2:30 p.m.	Cattle Chute Demo
2:00 p.m.	Farm Safety Demonstrations
2:00 p.m.	Minnesota State Patrol Vehicle Inspection
4:00 p.m.	Show Closes



See Us At Farmfest

August 1-3, 2023

Booth # 716

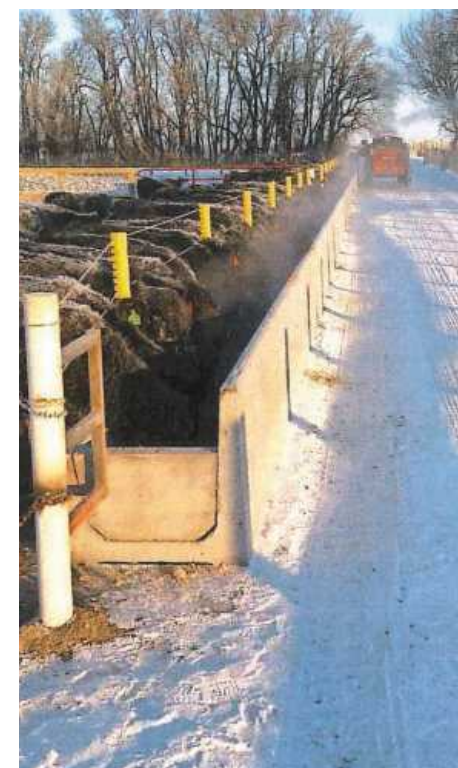
Visit HHFAB.COM for a complete list of attachments.



HH Fabrication & Repair LLC

877-823-3392

Winsted, MN



Check out our website
WWW.HANSONSILO.COM
or visit us at Farmfest
booth 313N

Precast Buildings

www.hansonsilo.com

Call for pricing

EST. 1916

HANSON

SILO COMPANY

* Hog & Cattle Slats

* Deep Pit Barns

* Feed Storage

* Equipment & Bunks

* Precast Concrete Panels

320-664-4171

Visit *The Land* in booth 2401 in the Ag Tent

The prize wheel is back for another spin as *The Land* staff will be at Farmfest with prizes and give-aways all three days.

Renew your subscription

Look for *The Land* subscription card in a July issue of *The Land*. Fill it out completely and RETURN IT IN PERSON at our booth at Farmfest (#2401 in the Ag Tent) for your choice of a bandana or 2024 Almanac calendar (while supplies last).

We need your signed cards every year to help us qualify for lower postage rates and keep *The Land* coming to your mailbox at a reasonable price. This also helps us show local and national advertisers that *The Land* is being requested by readers. Fill out a subscription card and don't miss a single issue of *The Land*.

Look for your coupon

As you enter the Farmfest gate, you will receive a "welcome" bag. Look inside the bag for a special coupon from *The Land*. The coupon entitles you to a free classified line ad in *The Land*. Drop it off at our booth or mail it in later. The coupon expires Nov. 17.

Meet the staff

The *Land* General Manager Deb Petterson will be at the booth all day Tuesday and on Wednesday morning. Stop by and tell her what you think of *The Land*. Deb enjoys hearing from our readers.

Our advertising representative Dan McCargar will be at the booth and visiting with clients and exhibitors at Farmfest. If your company is interested in advertising with the No. 1 choice for farmers, Dan is the one to talk to.



Deb Petterson



Dan McCargar

Managing Editor Paul Malchow will be patrolling the grounds on Wednesday and Thursday and will be at *The Land's* booth Wednesday at 1 p.m. and all day on Thursday. Paul always wants to meet readers and hear what you'd like to see in *The Land*. Story ideas, farm memories, ag policy, markets, regulations? Let us know what's on your mind. We're listening.



Paul Malchow

Many of you might be getting familiar with the work of Staff Writer Laura Cole. In addition to her writing skills, Laura coordinates *The Land's* "From The Fields" feature, maintains our Calendar of Events and handles our social media. Laura will be at Farmfest all day Tuesday and Wednesday morning. You might be able to catch her at *The Land's* booth when she's not running down a story.



Laura Cole

Join the conversation!

Like us on Facebook or follow us on Twitter and Instagram to stay in-the-know. Be sure to tag all posts with #MNFarmfest!

[Facebook.com/TheLandOnline](https://www.facebook.com/TheLandOnline)

[Twitter.com/TheLandOnline](https://twitter.com/TheLandOnline)

[Instagram@thelandmagazineonline](https://www.instagram.com/thelandmagazineonline)



BUILT STRONGER. LASTS LONGER.

Specialized equipment built stronger to execute your agricultural waste handling needs.



Pit Pumps



AFI Pumps



Transfer Pumps



Dragline Pumps

SALES > SERVICE > TRADE-INS

507-375-5577 / dodausa.com

255 16th Street South, St. James, MN



Bringing TECH to the FIELD

FROM RESEARCH TO RESULTS

Stop by booth #302

A great deal goes into every single seed before it even gets to you. Being on the forefront of science, Renk Seed has been in the agriculture industry for 175 years. Renk Seed customers can be confident in our products knowing that we are committed to delivering the best technology to the field.



1-800-BUY RENK
RENKSEED.COM

★ AMERICAN OWNED AND OPERATED ★

Visitors of all ages will find activities of interest at Farmfest

Besides sitting behind the wheel of some of the biggest rigs around, or begging to drive the golf cart, youngsters will find plenty to do at Farmfest.

Kids' Pedal Pull

1:00 p.m. Tuesday and Wednesday; 11:00 a.m. Thursday

Pedal Pull Track near Gate 2

Enter your 4 to 11-year-old into the kids' pedal pull event. Watch them pedal their way to a free refreshment and stick around to find out who is the first, second and third place winners in each age division.

Minnesota Farm Bureau Scavenger Hunt

Booth #7

Youth of all ages are invited to participate in the "From Farm to Field" scavenger hunt at this year's Farmfest. Sponsored by the Minnesota Farm Bureau, this activity provides youth an opportunity to learn about agriculture while they enjoy the sights and sounds of the show. Participants will learn



about products that come from Minnesota farms.

Participants can pick up an activity sheet at the Farm Bureau Booth (# 7). The activity sheet contains ten questions which can be answered by touring the exhibits and finding specifically-placed posters. Once completed, the activity sheet should be returned to the starting location to claim a ticket for an ice cream treat and more!

Livestock Tent

University Street between 6th and 7th

Visit our livestock tent for cattle chute demonstrations at 10:00 a.m. and 1:30 p.m. daily. And don't miss the lunchtime livestock speaker program. Plus, visit with our livestock-specific exhibitors and experts to gain additional expertise for your livestock operation.

Networking Lounge

SR03 & SR04

Need a fun place to relax after a long stroll through the show? Head over to seed plot area SR03 and SR04 and rest with some live music and refreshments. Chat with neighbors and friends and enjoy the show!

Minnesota State Patrol Vehicle Inspection

10 a.m. and 2 p.m. daily

Nuss Truck Booth, #830

Watch, listen, and learn as members of the Minnesota State Patrol demon-

strate how vehicle inspections are conducted, what they look for, and why. Inspectors will explain this year's many law changes affecting the operation of farm vehicles.

Ziegler Ag Equipment Ride and Drive

Northeast Corner of the Show Grounds

Test drive the latest from Ziegler Ag Equipment at the Ride and Drive in the Northeast corner of the show grounds.

Can-Am Ride and Drive

Booth SR22 near gate 3

Can-Am will host a ride and drive event in their demo space near Gate 3 and the all-new 2023 Can-Am ATVs will be available for test driving.

Polaris Ride and Drive

Booth 40-41 near gate 1

Polaris will host a ride and drive event in their demo space just inside Gate 1.

Mig Tungsten Carbide provides a solution



AT SCHULTZ WELDING we specialize in Tungsten Carbide application. This process extends the life of your parts 3-5 times. We apply it to a wide range of agricultural parts. For example Field cultivator sweeps ripper shank guards and points chisel plow points tile plow tips and heave plates. Hay grinder parts. Along with construction cutting edges and tips. Give us a call to discuss the ways we at Schultz Welding can help minimize your down time by maximizing the life of your parts.

See you at Farmfest
August 1st - August 3rd
Booth #3405



(507) 227-2159 • Schultzweld@gmail.com
schultzwelding.com



2023 Minnesota Farmfest exhibitor listing

1-2-3

360 Yield Center	432
40 Square Cooperative Solutions	2502
A	
A&A Engraving	4604
AARP Minnesota	3304
ABC Drones LLC	SR21
Action Manufacturing	4401
Advanced Drainage Systems	303
Ag Express Electronics	3105
Ag Performance, Inc.	4201
Ag Spray Equipment	1018
Ag Storm Equipment, LLC	711
Ag Tech Drainage	4501
Agassiz Seed & Supply	4409
AgCountry Farm Credit Services	F1
AgPoint Solutions	3201
Agrauxine	4310
Agricultural Utilization Research Institute	612
AgroEcoPower	1017

AKE Safety Equipment	3401
Albert Lea Seed House	3410
Alkota Cleaning Systems, Inc.	306
All America Pressure Washers	321
All Energy Solar	4307
Amazon Hub Delivery Partners	3505
Ameribuilt Buildings, Inc.	5
American Cattleman	2208
American Edge Grain	4109
American Waterworks	2310
Ames Construction	2101
Amsoil	932
Anez Consulting, Inc.	4504
Artex Manufacturing	709
Azgard Solar Inc.	723
Aztech Ag	912S

B

Back Saver	410S
Bad Dog Tools	4600
Balzer Inc.	829

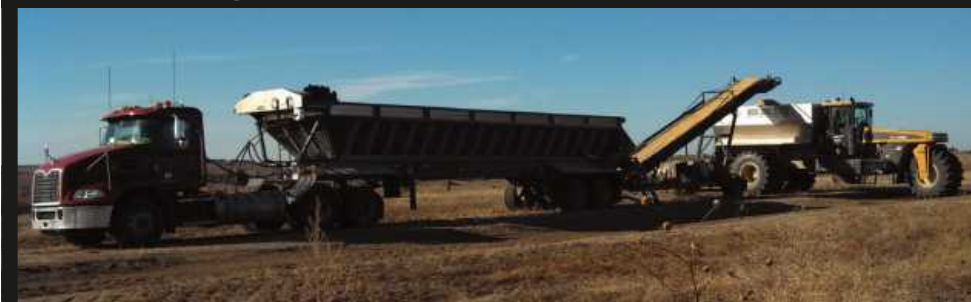
BankIn Minnesota	505N
Barke Lift & Level Concrete	3210
Bazooka Farmstar	610
Bearcom/ Motorola	3502
Beck's	SR09;SR09A
Best Livestock Equipment	728S
BigIron Auctions	911S
Bissell Commercial	4505
Blair's Disc Sharpening	3409
Blue Horizon Energy LLC	801
Blue Loon Concessions	C2;C616;C810
Bolton & Menk Inc	2408
Boss Supply of Janesville, Inc.	630
Brake Away Trailers and Auto Care LLC ..	602
Brandt Agricultural Products	922
Breezy Mills	313S
Bremer Bank	713
Build Today for Tomorrow, LLC	2608
Bulk Seed Systems, Inc.	401
Buzzard Gulch Inc.	101

C

Calmer Corn Heads	815
Can-Am	SR22
CAN-AM Premium Ride & Drive	SR22A
Center of the American Experiment	4407
CentraCare	513S
Central Boiler AND Altoz	415
Channel Seed	SR19
Christianson Systems, Inc.	301
CHS/ CHS Hedging	4208
Citizens Alliance Bank	505S
Clean Cutter Flail & Tiller Blades	3309
Clean Sweep Industries	808S
Cleary Building Corp.	812
Compeer Financial	608
Congressional District 7 & District 1 -Republicans	3610
Congresswoman Michelle Fischbach ...	3604
Conklin Products by TNR, Inc.	2304
Conrad American	1004
Copperhead Ag	416N

R & E Enterprises

Your Ag Lime Application Specialists!



- No Stockpiling on the Ground
- No Waste or Mess
- Custom Spreading and Trucking
- Ag Lime delivered Directly to the Terragator with a Conveyor System

**CHECK
US OUT
TODAY!**

For more information on delivery, spreading and rates, please email or call:

R & E Enterprises

ag@randeofmn.com • 507-388-3364

www.randeofmn.com



Christianson
Pneumatic Conveying Equipment
Plan ahead for Fall Harvest

Bin Piping:

Straight Pipe
Elbows
Compression Clamps
Bin Cyclones
Diverter Valve

Full Service Department

For your Grain Vac
Airlock Adjustment
Blower Maintenance

Machine Sales:

Grain Vacs New & Used
Seed Vac™ Handlair®
Push-Pac® VacBoss™

Blomkest, Minnesota
1-800-328-8896
www.christianson.com

We are hoping to see you!
Booth #301
Farm Fest 2023
Ask about Show Specials

**MADE
IN THE USA**



2023 Minnesota Farmfest exhibitor listing

Courtland Waste Handling.....	601	Flitz International, LTD.....	2610
Coyote Machining, LLC.....	2508	Forklift Tire	3305
Crary Industries	901	G	
Crysteel Truck Equipment Inc.....	430	Garford/Zurn USA.....	310S
Custom Ag Service	2210	General Equipment & Supplies, Inc.	232
Cutco Cutlery.....	2303	Gideons International.....	2107
D		GK Technology, Inc.....	2109
Dairyland Seed	202	Gold Country Seed.....	SR12
Dairyland Supply	603	Golden Harvest	402
Dakota Micro, Inc.....	3108	Gopher State One Call	4403
Dan's Custom Welding Tables	224N	Graham Tire Co.....	916
Delux Manufacturing Company	421	Grain Handler USA, Inc.....	909
Democratic Farmer Labor Party	2207	Green Energy Products	4101
Derson / Clean Burn	3507	GreenStone Farmers	3103
Design Electric, Inc.	4410	Growers Mineral Solutions.....	905S
Diesel Specialties Inc.....	4303	H	
DigiFarm VBN	4308	Hansen Agri-Commodities, LLC.....	3109
Direct Pivot Parts.....	3102	Hanson Silo Company.....	313N
Doda USA, Inc.....	409	Harvest International Inc.....	1011
DSI Ag Products.....	2509	Haven Industries.....	308N
Duinick Concrete	720	Hawaiian Moon.....	4203
E		Hayden Outdoors	3501
EASYFIX USA	3310	Heads Up Plant Protectants	4507
Ellingson.....	310N	Health Care for All Minnesota	2410
Enestvedt Seed Co.....	SR06	Healthy Farms	4100
Environmental Tillage Systems- SoilWarrior.....	434	Hellmuth & Johnson, PLLC.....	2203
EPS Buildings	637	Herc-U-Lift	309
Exhibitor Lounge.....	521	HH Fabrication & Repair, LLC	716
Exmark.....	622	HitchDoc.....	403
F		Holganix	618
Fantini	917	Honeyville Metal Inc.....	436S
Farm Bureau Financial Services.....	F2	Hotsy	503
Farm Country Trader, Inc.....	2605	Hurley and Associates.....	2204
Farm Safety For Just Kids.....	212S	HVR Insurance Group.....	2407
Farmers Business Network	913	I	
Farmer's Hot Line	4408	IBA Innovative Basement Authority.....	2602
Fast Ag Solutions.....	522	Ihle Fabrications LLC	817
Financial Wealth Solutions	2104	Insurance Brokers of MN & Aflac	4309
First Financial Bank - Farm & Ranch Division	3111	IntelliFarms Northern Division, Inc.....	507
Flagpole Farm.....	3408	Invisible Hands	2100
		Isaacson Sales & Service Inc.....	230
		Iverson Tree Farm	220

Ag Tent exhibits

2100	2101	2102	2103	2104	2107	2108	2109	2110	2111
2201		2203	2204	2205	2207	2208	2209	2210	
		2303	2304		2307	2308		2310	
2401	2402	2403	2404	2405	2407	2408	2409	2410	
2501	2502	2503	2504	2505	2507	2508	2509		
2600	2601	2602	2603	2605	2607	2608	2609	2610	2611
3100	3102	3103	3104	3105	3107	3108	3109	3110	3111 3112
3201	3202	3203	3204	3205	3207	3208	3209	3210	3211
3301		3303	3304	3305	3307		3309	3310	3311
3401		3403		3405	3407	3408	3409	3410	3411
3501	3502	3503		3505	3507		3509	3510	
3600		3603	3604	3605	3607		3609	3611	
4100	4101	4102	4103	4104	4107	4109		4111	
4201	4202	4203	4204		4207	4208		4210	
4301	4302		4303	4305	4307	4308	4309	4310	
4401	4402	4403	4404	4405	4407	4408	4409	4410	
4501		4504	4505	4506	4507	4508	4509	4510	
4600	4601	4603	4604	4605	4607	4608	4609	4611	

2023 Minnesota Farmfest exhibitor listing

J

J & M Manufacturing Co., Inc.	324N
J & J Ag Solutions	721
Jack Larson Seeds	SR16
Jenkins Iron & Steel Inc.....	222
Johanneck Water Conditioning, Inc.	2409
Jug Waterers, Franklin Waterers, Champion Tow Rope	406N

K

Kahn Tile Supply LLC.....	407
Kandiyohi County.....	3303
Kibble Equipment - John Deere	531;532
Kisco Leasing Company.....	406S
KLGR	4510
KNUJ AM 860 / SAM 107.3 FM.....	617N
Kondex Corporation	3607

L

Lafayette Lift Trucks	119
Land O' Lakes	914
Landoll Company.....	717



LandProz Real Estate - Jen Busch & Kelly Bolin.....	2402
LDM Ag Services	2611
Leading Edge Credit Union.....	2404

Leading Edge Industries	3403
LeafFilter Gutter Protection	4204
Lee J. Sackett, Inc.	2609
Legend Seeds, Inc.	SR20

Lemken USA, Inc.	732
Lester Buildings.....	715
LevALERT	2505
Lewis Cattle Oilers.....	3509
Linder Farm Network.....	611
Lingen Dairy Soft Serve	C1001S
Litzau Farm Drainage	1016
Livestock Equipment & Manufacturing...	632
Lorenz Manufacturing Company	208
Lund Studios	T205

M

MacDon, Inc.....	730
Mad City Windows and Baths	3110
Mandako	802
Manske LLC Drainage Supplies	915
Martin Till	923
MASWCD	4301
Mathews Company	820
Mathiowetz Construction	4607
Maverick Drone Systems.....	316S

Local Service & Repair Facilities
24/7 Emergency Phone Service



sun-source.com
888.786.7723

Keeping Industry Working with **Unparalleled Service & Repair**

- ✓ Local Field Service Representatives
- ✓ System Design & Engineering
- ✓ New Parts Sales
- ✓ Exchange Hydraulic Units



Used on Combines, Forage Harvesters, Swathers, Sprayers and Skid Loaders



Complete repair and testing of all the **major hydraulic component manufacturers:**



113 Winter Drive,
Granite Falls, MN 56241
(800) 427-3623

12800 Hwy 13 South Ste 100,
Savage, MN 55378
(800) 333-3317

11928 W Silver Spring Dr.
Milwaukee, WI 53225
(800) 456-0007

9310 Atlantic Dr. SW, Suite 8
Cedar Rapids, IA 52408
(800) 798-4613

2210 Main Ave. East, Ste 4,
West Fargo, ND 58078
(800) 540-5664

Omaha, NE
(800) 886-4040



PLANTING FOR THE FUTURE



Minnesota Soybean is returning to Farmfest and bringing two future farmers with us.

Bring your smartphone* and stop by the Minnesota Soybean booth (#620 - corner of Main and 6th Street) at this year's Farmfest on Aug. 1-3 at the Gilfillan Estate in Morgan, Minn., to meet Paul and Sandy – our future farmers – using augmented reality and learn how today's soy checkoff investments impact tomorrow's farmers.

A giveaway will be awarded to all who participate. See you there!

**iPads will be made available for attendees without a smartphone*

minnesoyta[®]

2023 Minnesota Farmfest exhibitor listing

May Wes Mfg.....	907
McFarlane Ag.....	526
MCM Fabrication	6E
MEBULBS	3104
Midco	911N
Midland Garage Door Mfg. Co.....	2111
Midwest Perma-Column, Inc.....	3605
Midwestern Construction Inc.....	4509
Miller Sellner	920
Minneapolis VA Suicide Prevention Program.....	4104
Minnesota Conservative Energy Forum	3603
Minnesota Corn Growers Association.....	702
Minnesota Department of Agriculture...	517S
Minnesota Department of Commerce	411
Minnesota Department of Natural Resources (DNR)	3600
Minnesota Department of Transportation / Minnesota Toward Zero Deaths	125S
Minnesota Department of Veterans Affairs	4102;4103;4202



Minnesota Farm Bureau Federation	7
Minnesota Farm Bureau Porkchop Stand .C8	
Minnesota Farmers Union.....	509

Minnesota Hemp Growers Cooperative	SR04
Minnesota Honey Producers	3205
Minnesota Petroleum Marketers Association (MPMA).....	414S

Minnesota Pneumatic Products.....	204
Minnesota Pork.....	614
Minnesota Propane Association	511
Minnesota River Area Agency on Aging	4608
Minnesota Soil Health Coalition.....	SR14
Minnesota Soybean Research & Promotion Council	620
Minnesota State Cattlemens Assoc. Food Stand	C416S;C513N
Minnesota State Patrol Commercial Vehicle Section.....	125N
Miss Becky's BBQ.....	C127
Monty's Plant Food	4603
Morton Buildings Inc.....	422
Mustang Seeds.....	501
MVTV Wireless Internet.....	4605

N

NAPA Auto Parts / Upward Hoist Installers.....	518
National Farmers Organization.....	2108
NAU Country	4107

**BEAUTY.
QUALITY.
DURABLE.
GUARANTEED!**



PRO-SHED
storage sheds & garages

YOU ARE INVITED

**Annual IDEAg Minnessota
Farmfest 2023**

Get to meet the Pro-Shed team,
try and tests our world-class sheds
and other exclusive offers & discounts!

August 1-3, 2023 • Booth 606

Gilfillan Estate, Morgan, MN, United States



Scan the QR Code
to learn more about
Pro-Shed

2023 Minnesota Farmfest exhibitor listing

Nelson's Agri Structures/ Riverside Hoop Structures	405
NextEra Energy Resources	3202
Northern Plains Airseeder Repair, LLC ..	2103
Northern Plains Track	929
Northland Buildings, Inc.	419
Northland Farm Systems, Inc.	707
Northland Ford Dealers	502
Northstar Commodity	2403
Norwood Sales Inc.	722
N-Rich Plant Food & Fertilizer, Inc.	4207
Nuss Truck & Equipment	830
NutraDrip Irrigation	2209

O

OK Track Solutions	819
O'Reilly Auto Parts	4302

P

Parallel Ag	726
Pioneer Seeds	SR07
Polaris Inc.	40
Polaris Premium Ride & Drive	41



Poly Tech Inc.	904
Poseidon LLC	3209
PowerLift Hydraulic Doors	417
Prairie Ag Products	4111
Prairie Meats Inc	3107
Precision Planting	910

Preferred Welder Sales - Central McGowan	320
Prime Attachments	335N
Prinsco	725
Pritchett Twine & Netwrap LLC	201
Pro Fleet Care	3208
ProfitPro LLC	4305;4405
Pro-Shed Sheds & Garages	606
Puck Enterprises	806
Pump & Meter Service, Inc.	3307
PURIS	2307

Q

Quality Liquid Feeds	3301
----------------------------	------

R

RCIS	2405
Real-Tuff, Inc.	2
Reaves Buildings	217
Renk Seed Company	302
Renville County	2503
Ridgewater College Ag Department ..	1001N
Rihm Kenworth	624

EDIGER AUCTION SERVICE

Consignment Auction

Accepting items:
Aug. 11-16, 8am-5pm

August 19th, 2023 - 9AM

Scott County Fair Grounds, Jordan, MN

FARM • CONSTRUCTION • ATVS • TRAILERS • VEHICLES • HAY

Multiple Rings • Live Simulcast • **NO HOUSEHOLD!** • Great Rates

www.edigerauctions.com



proxibid

Call for details... Jim: 507-351-1885 • Erika: 952-201-0874
Pat: 952-855-6607 • Jeff: 612-490-2387 • Sam: 612-598-7775

BELLE Plaine EQUIPMENT SALES



• Skid loader attachments

• Skid loaders

• Livestock & Farm equipment

• Box scrapers • Fencing supplies

• Bale squeezers • Bale & Feeder wagons

• Stock Tanks • AND SO MUCH MORE!



Call: 612.490.2387 OR 507-351-1885

www.belleplaineequipment.com

125 S. Ash St. • Belle Plaine, MN

2023 Minnesota Farmfest exhibitor listing

Rinke Noonan Attorneys at Law	2504
Ritchie Fountains / Carlson Wholesale ...	221
Road Machinery & Supplies Co.	905N
Roadhouse Bar & Grill.....	C628
Rob-See-Co - Streamline Ag.....	4609
Rokala Cattle Company.....	316N
Roto-Mix, LLC.....	816
Runnings Home, Farm & Outdoor Store .	619
Rush River Steel & Trim	228
Ryan's Small Engine Repair	912N

S

S.I. Distributing	412
S.I. Feeders/Div. Schoessow, Inc.	731E
S3 AWS Airbar	322
Safety Pavilion	105
Salford Group Inc.....	423
Sanco Equipment.....	1008
Schaeffer Oil.....	219
Schultz Welding	3405
Schweiss Doors	519
Senator Amy Klobuchar	3204



Sensor-1	2205
Shivvers Mfg., Inc.	517N
Shoup Manufacturing Co	2308

Timpte, Inc.....	408
TKO Solutions/ Pneu-Tek Tire Tools.....	906S
Tommy's Tacos	214
Tools and Toys	T200
Total Track & Performance Products	930
Touchstone Energy Cooperatives	2201
Trackfarmer.com.....	822
Traction Ag	4105
Trail King Industries	825
Tri-State Neighbor /	
Farm & Ranch Guide.....	2603
Tri-States Grain Conditioning, Inc.....	2507
Truck Center Companies.....	908
TrueNorth Steel.....	933
Trust Think Products	2601

U

U of MN West Central Research and Outreach Center	SR11
U.S. Army Corps of Engineers, St. Paul District.....	4508
Uni-Hydro Inc.....	318
University of Minnesota	615S
Unverferth Mfg. Co., Inc.	621
USA Product Sales LLC	4404
USC, LLC	304
USDA-NRCS.....	SR17

V

Vaderstad - Wil-Rich.....	701
Van Ahn and Company, Inc.....	2110

W

Walinga USA Inc.	530
Westmor Industries.....	808N
Whitetail Properties Real Estate	2600
Wick Buildings, Inc.	512
Wieser Concrete Products.....	121
Winco Generators	506
WNAX	520
WonderPax	3609
Worthington Tractor Parts Inc.....	418
Wyffels Hybrids.....	902

T

TerraClear, Inc.....	4601
The Land Magazine	2401
Thunderstruck Ag Equipment.....	718
Timewell Drainage Products	3203

Z

Ziegler Ag Equipment.....	1022
Ziegler Ag Ride & Drive Area.....	1034
Zimmerman Manufacturing	925



2015 Freightliner Cascadia 125 Sleeper Truck ; DD 15 Detroit Diesel Engine - 450 HP ; Eaton Fuller 10 Speed Transmission ; Air Ride Suspension ; Jake Brake ; 236" WB ; 3.31 Gear Ratio ; 10 Aluminum Rims ; 295/75R22.5 Steer & Drive Tires (80%) ; Recent Engine Work ; 651,000 Miles ; DOT Inspected.

Price \$ 39,500.00



2009 Freightliner Cascadia Day Cab Truck (VIN# 1FUJGECVX9LAH0516) ; Mercedes MBE 4000 Engine - 450 HP ; Eaton Fuller 10 Speed transmission ; Air Ride suspension ; Jake Brake ; 3.42 Gear Ratio ; 180" WB ; 10 Aluminum Rims 11R22.5 Tires ; 700,000 Miles.

Sale Price \$ 24,500.00



2009 Timpte Aluminum Grain Trailer/VIN# 1TDH422219B119663 40 Ft. 96" Wide, 78" High ; Spring Ride Suspension ; Tandem Axle ; Standard Hoppers ; Traps re-done 2 years ago ; Tarp new 1 year ago ; 8 Aluminum Rims ; 11R22.5 Tires - 75% ; Brakes - 50% Corrosion in King Pin and Front Rail Section ; Repairs needed on main suspension beams.

Sale Price \$ 16,500.00



2004 Mack Vision CX613 Day Cab Truck (VIN# 1M1AE06Y64N021091) ; E-7 Mack Engine - 427 HP ; Eaton Fuller 13 Speed Transmission ; Air Ride ; 3.86 Gear Ratio ; 182" WB ; Outside Aluminum Rims ; 11R22.5 Tires ; Truck has 2 line wet kit ; 708,000 Miles.

Sale Price \$ 21,750.00

Call OTSC

Your Truck, Trailer & Tire Sales & Service Center!

Visit Our Website: www.olsen-truck-service-center.com



State Hwy. 60 & County Road 12 • Saint James, MN 56081

Phone:

507-375-3106

800-891-2261

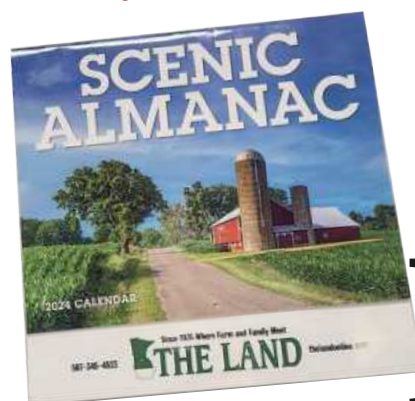
Visit THE LAND at Farmfest

Booth #2401 in the Ag Tent

August 1-3, 2023 • Redwood County, MN

2024 Scenic Almanac Calendar or THE LAND Bandana

your choice



FREE

when you return the 2023 subscription form on this page completely filled out.

Must present subscription form at Farmfest 2023.
Good while supplies last.

To qualify for the \$250 Cash Prize Drawing, return your form by August 4, 2023.

No purchase necessary. If you have already sent in your card, we thank you and you're automatically entered in the drawing! If you're not sure if you sent it in this year, call or email the office and ask us.



"Since 1976, Where Farm and Family Meet"

THE LAND

507-345-4523 • 800-657-4665

email: theland@thelandonline.com

Return your 2023 subscription card for a chance to win \$250!

Random prize drawing will be held on August 4, 2023 from all cards received by then. No purchase necessary.

2023 Subscription Form



"Since 1976, Where Farm and Family Meet"

THE LAND

Please complete the form below.
Sign and date, and bring to Farmfest.

☐ I own or operate 80+ acres of Minnesota and/or Northern Iowa ag cropland, raise 25+ head of livestock or am actively involved in agribusiness.

Full Year Voluntary Subscription: ☐ \$49 ☐ Other

☐ I do not qualify but would like a one-year subscription.
Full Year Subscription: ☐ \$49

Important – Please check all boxes that best match your farming operation.

Acres	1-99	100-249	250-499	500-999	1000+
Corn	<input type="checkbox"/>	<input type="checkbox"/>	<input type="checkbox"/>	<input type="checkbox"/>	<input type="checkbox"/>
Soybeans	<input type="checkbox"/>	<input type="checkbox"/>	<input type="checkbox"/>	<input type="checkbox"/>	<input type="checkbox"/>
Alfalfa	<input type="checkbox"/>	<input type="checkbox"/>	<input type="checkbox"/>	<input type="checkbox"/>	<input type="checkbox"/>
Wheat	<input type="checkbox"/>	<input type="checkbox"/>	<input type="checkbox"/>	<input type="checkbox"/>	<input type="checkbox"/>
Sugar Beets	<input type="checkbox"/>	<input type="checkbox"/>	<input type="checkbox"/>	<input type="checkbox"/>	<input type="checkbox"/>
Total Acres	<input type="checkbox"/>	<input type="checkbox"/>	<input type="checkbox"/>	<input type="checkbox"/>	<input type="checkbox"/>

Livestock Head

Hogs marketed	<input type="checkbox"/> 1-99	<input type="checkbox"/> 100-249	<input type="checkbox"/> 250-499	<input type="checkbox"/> 500-999	<input type="checkbox"/> 1000+
Sheep raised	<input type="checkbox"/> 1-99	<input type="checkbox"/> 100-249	<input type="checkbox"/> 250-499	<input type="checkbox"/> 500-999	<input type="checkbox"/> 1000+
Beef Cattle marketed	<input type="checkbox"/> 1-99	<input type="checkbox"/> 100-249	<input type="checkbox"/> 250-499	<input type="checkbox"/> 500-999	<input type="checkbox"/> 1000+
Dairy Cattle milked	<input type="checkbox"/> 1-50	<input type="checkbox"/> 51-99	<input type="checkbox"/> 100-199	<input type="checkbox"/> 200+	

Data will NOT be sold.

PLEASE
PRINT

Name _____

Mailing Address _____

City, State, Zip _____

County of Address _____ Phone # _____

E-mail Address _____

Signature _____ Date _____

THE LAND • 418 South Second St. • Mankato, MN 56001

Five finalists announced for Woman Farmer of the Year

The top five finalists for the Farmfest Woman Farmer of the Year Award have been selected. IDEAg Group, LLC., producers of Minnesota Farmfest, will bestow the fourth annual Farmfest Woman Farmer of the Year Award on August 3.

The finalists are Rachel Gray of Blackduck, Minn.; Rachelle Krienke of Lester Prairie, Minn.; Alma Kubat of Owatonna, Minn.; Debbie Morrison of Mora, Minn.; and Kari Olson of Hawley, Minn.; These five women will be recognized at an awards ceremony at 10:45 a.m. on Aug. 3.



Rachel Gray
Blackduck, Minn.

Rachel grew up on the same farm she runs today.

Many changes have been made since she took over including the heifer development business.

She began her work experience as a teacher in Blackduck, Minn. After teaching for many years she decided to go back to farming which was her true passion.

She runs the breeding and genetic program on her ranch. She chooses the genetics for other private ranches and does the custom breeding of those animals. While doing all this, she is teaching her son and grandchildren the business. This is her legacy for them.

Rachel is not just a rancher; she has continued as an educator. She hosts ag classes at her farm for students to learn skills they would otherwise just read about in a textbook.

She is also a part of the Cattleman's Association, Soil and Water Conservation board, the Kelliher FFA Alumni, and other local organizations.

Rachelle Krienke
Lester Prairie, Minn.

Rachelle learned the value of hard work and dedication growing up on a hobby farm near Winsted, Minn. — the third of five children. She was active in the Winsted Jolly Juniors 4-H Club and McLeod



County 4-H, including showing beef cattle. After graduating from Holy Trinity High School, she took courses at St. Cloud State University. She fell in love



RINKE NOONAN

attorneys at law

**FIRMLY
COMMITTED.**

*Agriculture's
Choice for
Lawyers*



WETLANDS



PUBLIC DRAINAGE



COMPLIANCE



PERMITS



FARM SUCCESSION
PLANNING



ESTATE PLANNING

320.251.6700 RinkeNoonan.com

Visit us at booth #2504

FULL SEASON PROTECTION AGAINST...

- ✓ Sudden Death Syndrome
- ✓ Rhizoctonia Root Rot
- ✓ White Mold



HeadsUpST.com
Booth 4507
EPA Reg. #81853-1

Woman Farmer of the Year (continued)

with and married a farmer. Despite never having so much as milked a cow, she dove feet first into dairy farming.

As Krienkes' Prairie Dairy operation has grown over the years, Rachelle has been invaluable to helping the management of the business evolve. She keeps the farm's books, recruits and schedules employees, and takes an active role in participating in the Dairy Profitability Enhancement Program and Farm Business Management with her husband. She has taken farm-specific Spanish language classes to help support the dairy's largely Hispanic workforce.

In addition to management and business functions, Rachelle is part of daily production operations. Calf care is her area of expertise, and she works to stay current on best practices and help the farm's youngest animals thrive right from the start.

She is a member of the board of education at St. Paul Evangelical Lutheran Church, recently helping lead the search for a new Director of Christian Education in addition to regular duties supporting Sunday School and religious education programming. She has been a member of the Howard Lake Waverly Winsted FFA Alumni group since 2017, playing a supporting role in fundraisers like the annual alumni auction and tractor pull. She is a past 4-H Club Leader for the Winsted Jolly Juniors 4-H Club.

Farming is nonstop, and so is Rachelle. In her farming career, she has done more than 600 herd checks. She has worked all hours of the day and night in the barn, behind the wheel of the tractor, in front of the computer while raising three kids and supporting her community.

She doesn't just care for the animals on the farm. She's a dedicated mother who is there for band concerts, soccer games, FFA awards night and every single day of the McLeod County Fair. She has packed lunches, trekked to orthodontist appointments and always brings the best food to family potlucks.

Rachelle's nominator told us, "I'm always amazed by her tenacity and her commitment to the farm and her family. Whatever life throws at her, she keeps showing up and giving it her best."

Alma Kubat Owatonna, Minn.

Alma was born in Owatonna, Minn. in 1940 and was raised on her parent's family farm in rural Deerfield Township. She attended a one-room country school and graduated from Owatonna High School in 1958.

Shortly after graduation, she met a man on a blind



date and they were united in marriage in 1961. Alma immediately quit her full-time job as a telephone operator shortly after marriage, and at that point,



A DIVISION OF Farmers Union Industries

ARTEX
ALMOST AS TOUGH AS FARMING.

WHEN THE GOING GETS TOUGH
THE TOUGH
DEPEND ON ARTEX



MADE IN MINNESOTA
FAMILY FARMER OWNED

ARTEXMFG.COM

FIND US AT BOOTH #709

MINNESOTA
FARMFEST

Woman Farmer of the Year (continued)

became a driven, dedicated full-time farm wife. Together, they raised five children on the farm.

After her husband's passing in 1994, Alma continued running the farm operation. At the age of 83, she takes care of her chickens, feeds steers and hogs, and operates bin fans after closely monitoring the weather and humidity. She always wants to be helpful and demands to be included in daily labor farm operations. In most months of the year, she's rarely found in the house — instead doing chores throughout the farm in some capacity.

Alma also takes care of all bills, financing and permits, and income tax preparations. She orders fuel along with being instrumental in grain sales, pricing and marketing.

Alma does a weekly live radio broadcast with her son, Brad, called the "Thursday Morning Almanac with Brad's Mom" at 8:45 a.m.

"Mom was born to be a farmer," Brad says. "She lives, breathes and will die a farmer. She is a great steward of the land, and her faith in God runs deep. She is very proud of the heritage of our family farm and loves to tell its extensive story of good times and bad."

Debbie Morrison Mora, Minn.

Debbie grew up in the Twin Cities and attended the University of Minnesota, Twin Cities campus, where



she met her husband. Her husband was an officer in the Navy, and they lived in all four corners of the United States within six years. After returning to Minnesota, Debbie worked in advertising agencies for the next 30 years.

For three years she and her husband camped on the land they purchased and decided to build their home in 2000. The first project was to restore 40 acres of dormant hayfields into native prairie working together with the U.S. Department of Agriculture's Natural Resources Conservation Service. This first step catapulted further interests in more farming opportunities such as beekeeping and a CSA farm. In 2012, she quit the corporate world to work full-time on the farm.

Debbie has been able to use her talents to market their taproom and cidery business — encouraging the public to come and spend time at the farm. The public is encouraged to walk the 172-acre farm to see the growing operation, native habitat, and how the two work together. The bluebird houses, martin houses, the wetlands and the bee houses display how conservation and the natural environment of the farm all work together for the production of the farm. They have been certified as an organic farm since 2008.

Over the years, Debbie has worked with Worldwide Opportunities on Organic Farms to mentor aspiring

Minnesota corn farmers and their families play a pivotal role in our state. From investing in third-party research to driving economic development, corn farmers are continuously working to improve and become better stewards of our state's natural resources while maintain a thriving rural economy. Learn more at mncorn.org

**Visit us at Farmfest
in booth #702!**



Woman Farmer of the Year (continued)

farmers, students, and others interested in agriculture and farming from all over the world. Garden Clubs, the Osprey Wilds Environmental Center, and other organizations tour the farm regularly to learn more about farming and what they have done to integrate the natural environment into their farming practices. She belongs to the Farm Bureau, the Sustainable Farming Association, and the Minnesota Farmers Union as well as the Cider Guild.

Debbie's out-of-the-box thinking allowed her to grow ginger, a crop not traditionally grown or seen in our area. The arts community and local food talent love the venue and the opportunity to demonstrate their own talents.

Kari Olson Hawley, Minn.

Kari Olson grew up along with her two sisters on the family farm that her, her father Rob, and their team member, Owen, operate today. She attended North Dakota State University to study agricultural economics and crop and weed science before returning home to the family farm. Since Kari returned to the farm, she's been working alongside her parents to transition the operation and decision making to the next generation. She is the fourth generation on



Robert Olson Farms and looks forward to continuing her family's farming and conservation legacy.

Under Kari's lead, the farm is in the process of entering the livestock industry to graze cover crops, helping them achieve the next level of soil health on their operation.

One example of the farm's conservation legacy is their participation in the Minnesota Agricultural Water Quality Certification Program.

Kari is an excellent example and spokesperson for young women in Minnesota agriculture. She has spoken at events such as the Conservation Tillage Conference, and worked with researchers to better understand soil health practices and how to apply them on her operation. Seeing the role she assumes in Minnesota agriculture and soil health spaces is a reminder and encouragement to other young women that women absolutely can and should be decision makers in agriculture.

In order to be considered for Woman Farmer of the Year, candidates must farm or ranch as a sole proprietor or one part of a couple, family or partnership. The farm must be located entirely within the state of Minnesota. Candidates may work outside the home or farm, but must contribute to the farming/ranching operation in addition to the duties outside the farm. Each candidate has had a positive impact on the farm in terms of income, yield, diversification, and/or overcoming challenges. Nominees demonstrates not only impact on the farm but also positive impact on their community.

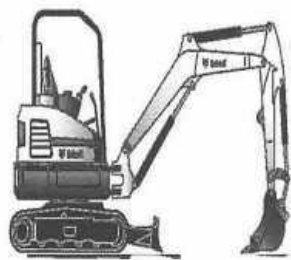
The Woman Farmer of the Year will receive a \$1,000 cash prize along with recognition of all her hard work and accomplishments.

FARM-RITE EQUIPMENT, INC.



Bobcat Authorized Bobcat Dealer

Sales • Service • Rentals
Attachments • Financing
STOP IN OR CALL!



Excavators



Skid-Steer Loaders

Dassel, MN	Willmar, MN	St. Cloud, MN	Long Prairie, MN
320-275-2737	320-235-3672	320-240-2085	320-732-3715

This IS Energy Independence.

UP TO
\$2000
TAX CREDIT*
On qualifying models and installation



There is no better way to heat with wood.

- **Best efficiency, highest Btu rating** - At 92% overall efficiency (LHV), the Classic Edge 960 HDX provides the highest efficiency of EPA-certified stick wood burning appliances and delivers the highest Btu rating of cord wood appliances, with a rating of 400,000 Btu/hr.**
- **Easiest to operate** - Industry-exclusive FireStar® controller takes all the worry and guesswork out of wood heating. Works with any heating system and any firewood.
- **Easiest to maintain** - Full-access design and patented Easy View® Heat Exchanger with hinged door.

**CLASSIC
EDGE**
TITANIUM HDX
Outdoor Wood
Furnace

Remote
monitoring
on your
smartphone
with industry-
exclusive
FireStar
Controller



See us at FarmFest 2023: Booth #415

To learn more and to find your nearest dealer: **CentralBoiler.com**

Must be installed in accordance with all applicable codes and regulations. *On qualified models and installation. US Internal Revenue Code Sec. 25(C) effective Jan. 1, 2023, for heating a residence. Consult a tax professional with any questions. **As of 6/27/23, compared to outdoor appliances with a maximum output greater than 300,000 Btu/hr. ad7900



New Farm Bill reigns supreme during 2023 Farmfest forums

The 2023 crop year will be the final year for the current Farm Bill, which is set to expire on Sept. 30 unless there is an extension. Farm Bills are one of the most comprehensive pieces of legislation passed by Congress, with programs ranging from farm commodity programs to food and nutrition programs, from conservation programs to rural development programs, and several more.

In many cases, finalizing a Farm Bill can be quite controversial — both along political party lines and geographical differences — with members of Congress wanting to protect the farm, food, conservation and economic interests of their state.

The current Congressional Budget Office (CBO) baseline estimate for Federal budget expenditures over the next ten years (2024-2033) is \$1.5 trillion, or an average of \$150 billion per year, which would become the first trillion dollar Farm bill in history.



By Kent Thiesse,
Farmfest Forum
Coordinator

The projected baseline budget is 65 percent higher than when the last Farm Bill was passed in 2018, which had an estimated 10-year CBO baseline of \$860 billion, or an average \$86 billion per year.

The current CBO estimate for expenditures over the next ten years (2024-2033) for the various titles in the Farm Bill includes Nutrition Title — \$1.2 trillion (82 percent of total) or \$120 billion per year; Crop Insurance Title — \$97.1 billion (7 percent of total) or \$9.71 billion per year; Commodity Title — \$61.8 billion (4 percent of total) or \$6.18 billion per year; and Conservation Title — \$57.5 billion (4 percent of total) or \$5.75 billion per year. Note that an additional \$34.7 billion (2 percent) was allocated to conservation programs as part of the 2022 Inflation Reduction Act. All other titles making up the remainder of the Farm Bill total \$19.5 billion or \$1.95 billion per year — less than 1 percent of the total bill expenditures.

There are several key items which need to be addressed as Congress moves toward completing a new Farm Bill: Increasing reference prices and adding more funding to the Title I commodity programs (PLC and ARC); Enhancing the Dairy Margin Coverage Program to offer more risk protection to mid-sized dairy farms; Protecting and enhancing crop insurance coverage, including the addition of ad-hoc disaster program coverage (ERP, etc.) into crop insurance programs; and enhancing the Livestock Revenue Program (LRP) and other insurance programs as a risk management tool for livestock producers.

The new Farm Bill will also look to address potential changes to the Conservation Reserve Program (CRP), the Environmental Quality Incentives Program (EQIP), and the Conservation Security Program (CSP). Congress will also be looking at added funding and support for U.S. Department of Agriculture finance and loan programs, trade programs, rural development programs, and ag research.

And the biggest battle of all could be a showdown involving potential adjustments in requirements and funding for Supplemental Nutrition Program (SNAP).

An exciting lineup of feature forums is planned for each day at Farmfest in 2023 on August 1, 2 and 3. The forums will be held in the Wick Buildings Forum and Education Center on the Farmfest Site, which is located at the Gilfillan Estate, 7 miles southeast of Redwood Falls, Minnesota.

The forums will have a heavy emphasis on the new Farm Bill and other key topics and policy issues affecting farm families and rural communities. Forum speakers and panels will include national and state political officials, farm organization leaders, ag industry professionals, and successful farm operators.

The Farmfest feature forums this year will be highlighted by a "U.S. House Ag Committee Farm Bill Listening Session" which will be hosted by Congressman G.T. Thompson, Chair of the U.S. House Agriculture Committee. The Farm Bill Listening Session will be held on Wednesday, Aug. 2, from 9:30 to 11:45 a.m. All members of the U.S. House Ag

Committee have been invited to participate in the Farm Bill Listening Session. Several members of Minnesota's U.S. House have already committed to participation in this forum. During the Listening Session there will be opportunities to hear from the U.S. House Ag Committee leadership, as well as to make comments to the Committee on issues related to development of the next Farm Bill.

"The New Farm Bill and USDA Ag Policy Issues" is the title of the feature forum on Tuesday, Aug. 1 at 10:30 a.m. Robert Bonnie, USDA Undersecretary of Agriculture, will provide the keynote address for the forum. Minnesota Senator Amy Klobuchar will also be present for this forum. The forum panel will include the following leaders of national and state farm organizations: Scott Vanderwal, American Farm Bureau Vice President; Rob Larew, National Farmers Union President; Tom Haag, National Corn Growers Assn. President; Lori Stevermer, National Pork Producers Council President-Elect; and Bob Worth, Minnesota Soybean Growers Association President. This forum will focus on the upcoming new Farm Bill and other national policy issues and programs administered through USDA.

U.S. Trade Ambassador Doug McKalip from the U.S. trade Office will be the featured speaker at a forum titled: "U.S. Ag Export and Trade Policy", which is scheduled for Tuesday, Aug. 1 at 9:30 a.m., will provide an opportunity to get the latest information and details on current and potential U.S. trade agreements, as well as get updates on some of the challenges in trade policies and U.S. ag exports.

The afternoon feature forum at Farmfest on Tuesday, Aug. 1 at 1:15 p.m. is titled, "Understanding Climate-Smart Practices and Policies". This intriguing forum will provide background information on some of the new "climate-smart" initiatives and carbon sequestration efforts which are currently being implemented, as well as be an opportunity to hear from farmers and experts that have experience with these practices. Panel mem-

See **THIESSE**, pg. F23

FARMFEST ADVERTISER LISTING

Ag Management Solutions.....	12, 13
Anderson Seeds.....	3
Artex MFG.....	19
Central Boiler.....	21
Christianson Systems, Inc.	8
DODA USA.....	6
Ediger Auction Service.....	15
Farm-Rite Equipment Inc.	21
H.H. Fabrication & Repair.....	5
Hanson Silo.....	5
Heads Up Plant Protectants, Inc.....	18
Litzau Farm Drainage.....	Cover Wrap
Minnesota Corn Growers Association	20
Miss Becky's BBQ.....	4
Olsen Truck Service.....	16
Pro Shed Buildings.....	14
R & E Enterprises of Mankato, Inc.....	8
Renk Seed.....	6
Rinke Noonan.....	18
Rush River Steel & Trim.....	24
Schultz Welding.....	7
Southern MN Initiative.....	2
SunSource.....	11
Westmor Industries.....	23

507-345-4523 • 800-657-4665

THIESSE, from pg. F22

bers will include Troy Daniell, Minnesota Natural Resources Conservation Service state conservationist; Ariel Kagan, Minnesota Farmers Union; Lief Fixen from the Nature Conservancy; Vincent Gauthier from the Environmental Defense Fund; and Lauren Servick from the Minnesota Pork Producers Association.; along with farm operators Nathan Collins, Minnesota Farm Bureau; Harmon Wilts, Minnesota Farmers Union; and Grant Breitreutz, Minnesota State Cattleman's Association.

A feature forum, “Perspectives on Minnesota Ag and Rural Policy Issues,” will be held on Wednesday, Aug. 2 at 1:15 p.m. Minnesota Governor Tim Walz will deliver the opening comments for the forum at 1:10 p.m. This forum will be an opportunity to learn more about some of recently passed and proposed State policy issues which may affect Minnesota's agriculture industry and rural communities. The forum panel will include Minnesota Agriculture Commissioner Thom Peterson, Minnesota Department of Natural Resources Commissioner Sarah Strommen, Minnesota Department of Transportation Commissioner Nancy Daubenberger, Minnesota Pollution Control Agency Deputy Commissioner Peter Tester, Minnesota House Ag Committee Chair Rep. Samantha Vang, Minnesota Senate Ag Committee Chair Sen. Aric Putnam, Rep. Paul Anderson, and Sen. Torrey Westrom.

The “Women in Ag Forum” will be held on Thursday morning, Aug. 3, starting at 10:45 a.m. At the conclusion of the forum, the finalists for the 2023 Farmfest Woman Farmer of the Year will be introduced, concluding with the announcement of the winner.

The “Farm Family of the Year” recognition program will be held on Thursday, Aug. 3, at 1:15 p.m., honoring approximately 80 farm families from throughout Minnesota who have been selected at the county level for this special recognition. This event is jointly sponsored by the University of Minnesota and the IDEAg Group, LLC.

A special “Ag Outlook Forum” is scheduled for Tuesday, Aug. 1 at 2:45 p.m., which features an overview of the U.S. ag economy and commodity markets, as well as an update on current crop and weather conditions. Speakers

include American Farm Bureau Vice President of Public Policy Sam Kieffer, U of M Extension Crop Educator Dave Nicolai, and Jason Ward, Grain Marketing Analyst with Northstar Commodities.

A free pancake breakfast, sponsored by Minnesota Farm Bureau will be held Wednesday, Aug. 2, from 8-10 a.m. The event will be hosted by Minnesota Farm Bureau President Dan Glessing and other Farm Bureau leaders. A presentation titled “Changing Hands with Erin Herbold-Swalwell”, (sponsored by Farm Bureau Financial Services) will be offered at 8:30 a.m. during the pancake breakfast.

Another special presentation, sponsored by CHS, will be “Strategic Decision Making”, presented by Patti Uhrich, Producer Broker for CHS Hedging, LLC.

Ag Country will offer a special presentation on Wednesday, Aug. 2 at 2:45 p.m. titled, “Data-Driven Insurance Decisions”, which will highlight the LRP and Crop Insurance Analyzer Tool to maximize risk mitigation for farmers.

The University of Minnesota is hosting a “Manure Applicator Certification Program” on Thursday morning Aug. 3 from 8-10:30 a.m.

Other special livestock programs will be held at 11:30 a.m. each day at Farmfest. Topics include, “Climate-Smart Practices for Livestock Producers” on Tuesday, Aug. 1, “Current Status of the Minnesota Livestock Industry” on Wednesday, Aug. 2, and “Battling Livestock Diseases in Minnesota” on Thursday, Aug. 3.

For more details on the Farmfest forums and presentations, contact me at (507) 381-7960 or kent.thiesse@minnstarbank.com.

Other information on the exhibits, plots, activities and other details at Farmfest can be found at <http://www.ideagroup.com/>.

Kent Thiesse is a government farm programs analyst and a vice president at MinnStar Bank in Lake Crystal, Minn. He may be reached at (507) 726-2137 or kent.thiesse@minnstarbank.com. ♦

PROPANE STORAGE YOUR WAY

SCAN
TO LEARN MORE



PIPELINE TO PUMP

- » 18,000 or 30,000-gallon sizes available
- » Minimal set-up
- » No in-ground piers
- » Ability to relocate
- » Stock inventory available
- » Call 800.992.8981 for more information



westmor-ind.com

Come See Us at FarmFest! Booth 228



30 COLORS
26-29 GAUGE

Standard all around
durability



30 COLORS
26-29 GAUGE

Standing seam architecture
look for half the price



30 COLORS
26-29 GAUGE

Residential and round
roof applications



10 COLORS
26 GAUGE

Commercial and wide
Perlin applications



RUSH RIVER
steel & trim

507-248-3577
www.RushRiverSteel.com

Quality and Service You Can Count On!

FARM DRAINAGE

Since 1972

- Water management
- Tiling fields
- Roads & parking lots
- 3"-24" boots
- Dig as big as you need
- Plowing hdpe pipe
- Best equipment to do the best job!
- Repair Crew

DIRECTIONAL BORING

- Geothermal
- Waterline
- Electric line
- Boring under roads
- Boring hdpe pipe
- On grade
- Anywhere you don't want to dig!



**BORE
ANYWHERE
YOU DON'T
WANT TO DIG!**



THE LAND'S FARMFEST PREVIEW

Brought to you by **Litzau Farm Drainage & Directional Boring**

**VISIT US
AT BOOTH
#1016**



Call for 2023 Summer Install Special!

"Since 1972"

Scott Litzau 320-905-1857
Noah Johnson 320-905-6725
Mike Litzau 320-905-8645

MULTIPLE LOCATIONS: To Serve The Farming Community
Litzaufarmdrainage.com

SCAN ME

Instagram Facebook

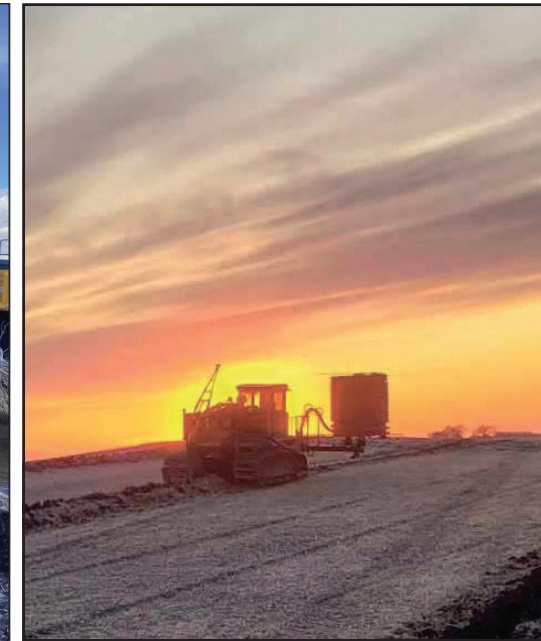
"Since 1972"

Scott Litzau 320-905-1857
Noah Johnson 320-905-6725
Mike Litzau 320-905-8645

MULTIPLE LOCATIONS: To Serve The Farming Community
Litzaufarmdrainage.com

SCAN ME

Instagram Facebook



No Job Too Big or Too Small!

- Lagoon & Wetland Restoration
- Best equipment to do the best job!

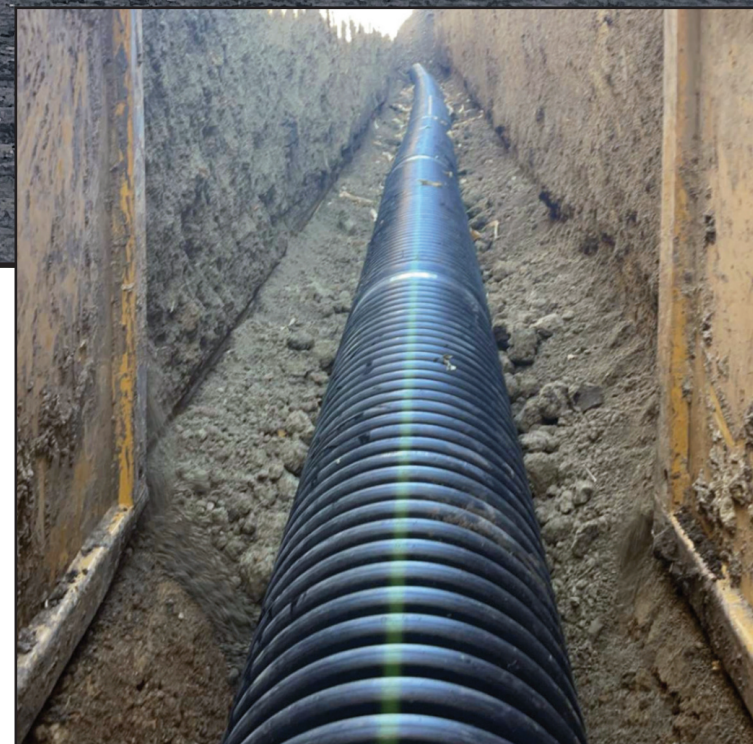
Also be sure to check us out at these upcoming fairs and shows.

Red River Valley, July 7th-16th
 Redwood County Fair, July 13th-16th
 Grant County Fair, July 20th-23rd
 FarmFest, August 1st-3rd, Booth #1016
 Meeker County Fair, August 2nd-6th
 Sibley County Fair, August 2nd-6th
 Renville County Fair, August 9th-11th
 Kandiyohi County Fair, August 9th-12th
 Brown County Fair, August 9th-13th
 McLeod County Fair, August 17th-20th
 Big Iron, September 12th-14th

Check out more project photos on our Facebook page at:
www.facebook.com/Litzaufarmdrainage-inc



CALL US TODAY!



"Since 1972"

LITZAU
Farm Drainage & Directional Boring

Scott Litza 320-905-1857
 Noah Johnson 320-905-6725
 Mike Litza 320-905-8645
 MULTIPLE LOCATIONS: To Serve The Farming Community
Litzaufarmdrainage.com

SCAN ME

Instagram Facebook

"Since 1972"

LITZAU
Farm Drainage & Directional Boring

Scott Litza 320-905-1857
 Noah Johnson 320-905-6725
 Mike Litza 320-905-8645
 MULTIPLE LOCATIONS: To Serve The Farming Community
Litzaufarmdrainage.com

SCAN ME

Instagram Facebook