



# Washington Adventist Hospital Demolition/Deconstruction Update

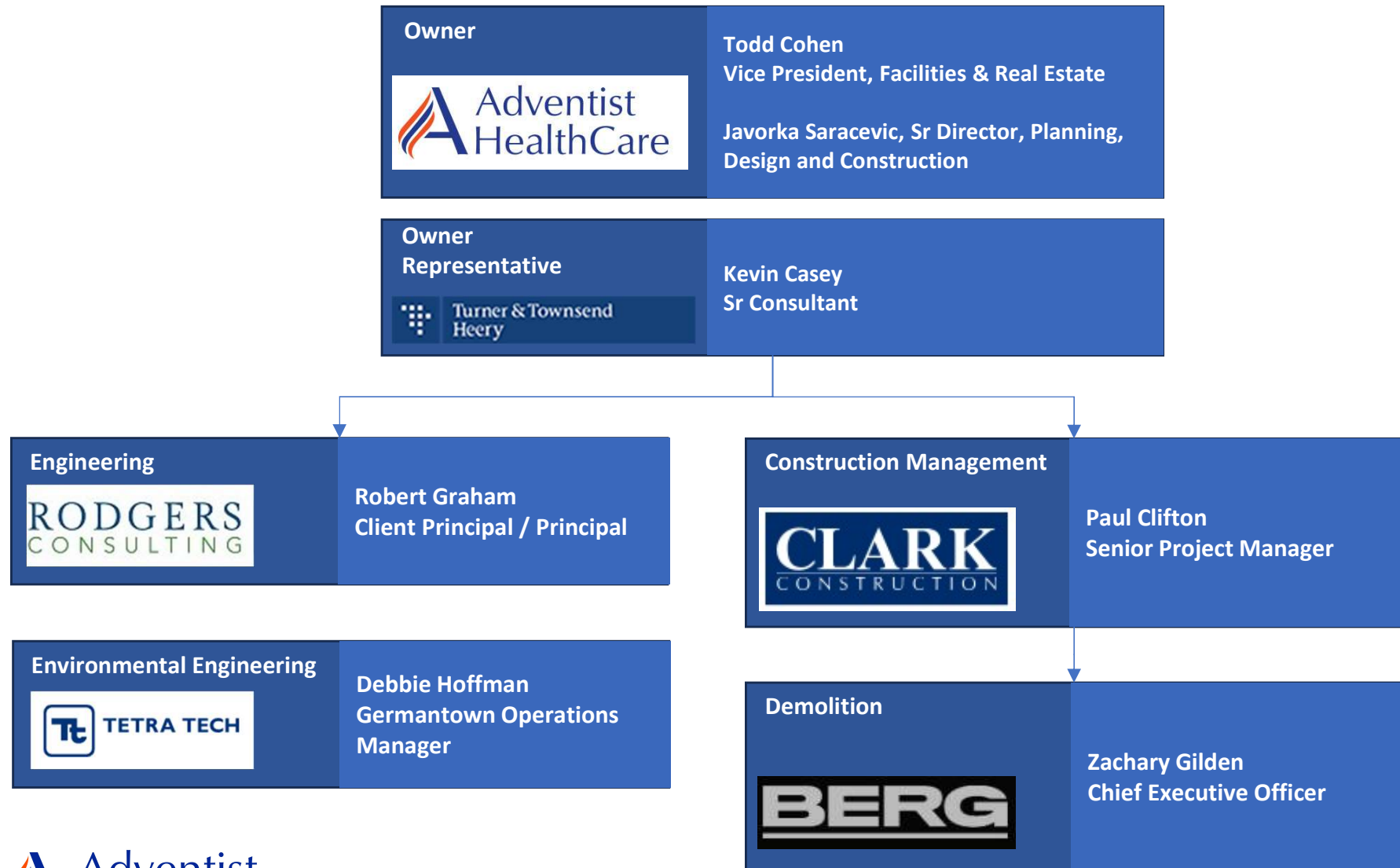
June 24, 2026

# Presentation Agenda

- Overview of the demolition / deconstruction process
- Upcoming activities
- Permitting and overall schedule
- Construction activities
- Environmental monitoring
- Site security and maintenance of the site
- Channels of Communication



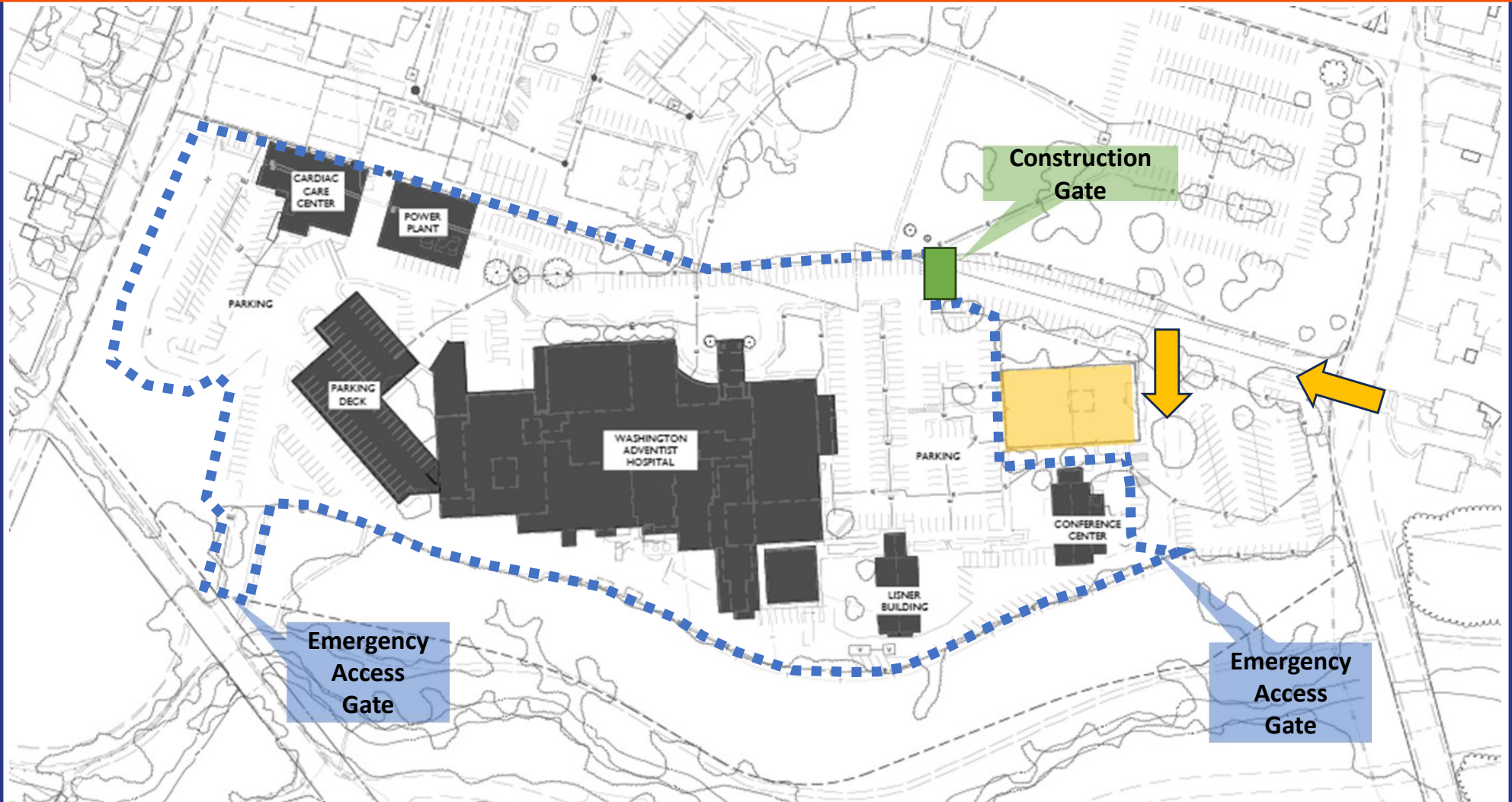
# Demolition Process - Key Team Members



# Demolition Process - Buildings to be Demolished



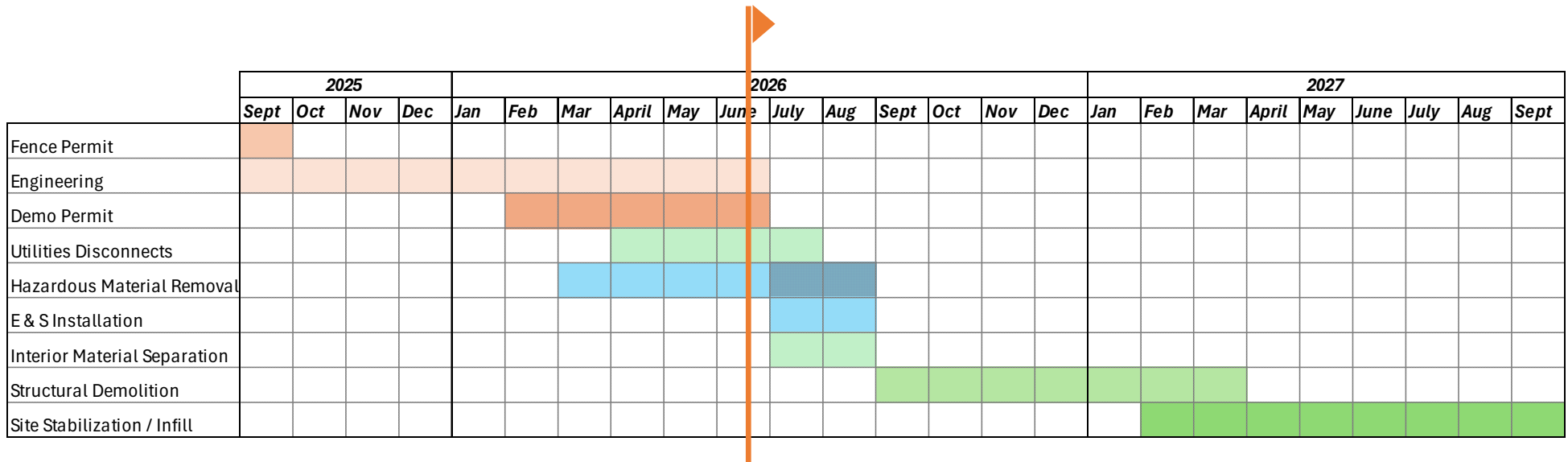
# Demolition Process - Site Fence



# Demolition Process



# High Level Schedule



## Key activities in the next 6 months:

- Completion of Abatement
- Start and completion of interior material separation
- Start of structural demolition

# Update on Permitting

- **Permits issued:**

- Fence
- Interior modifications

- **Permits in review:**

- Erosion and Sediment Control
- Stormwater Pollution Prevention Plan
- Tree Removal Plan
- Individual raze permits

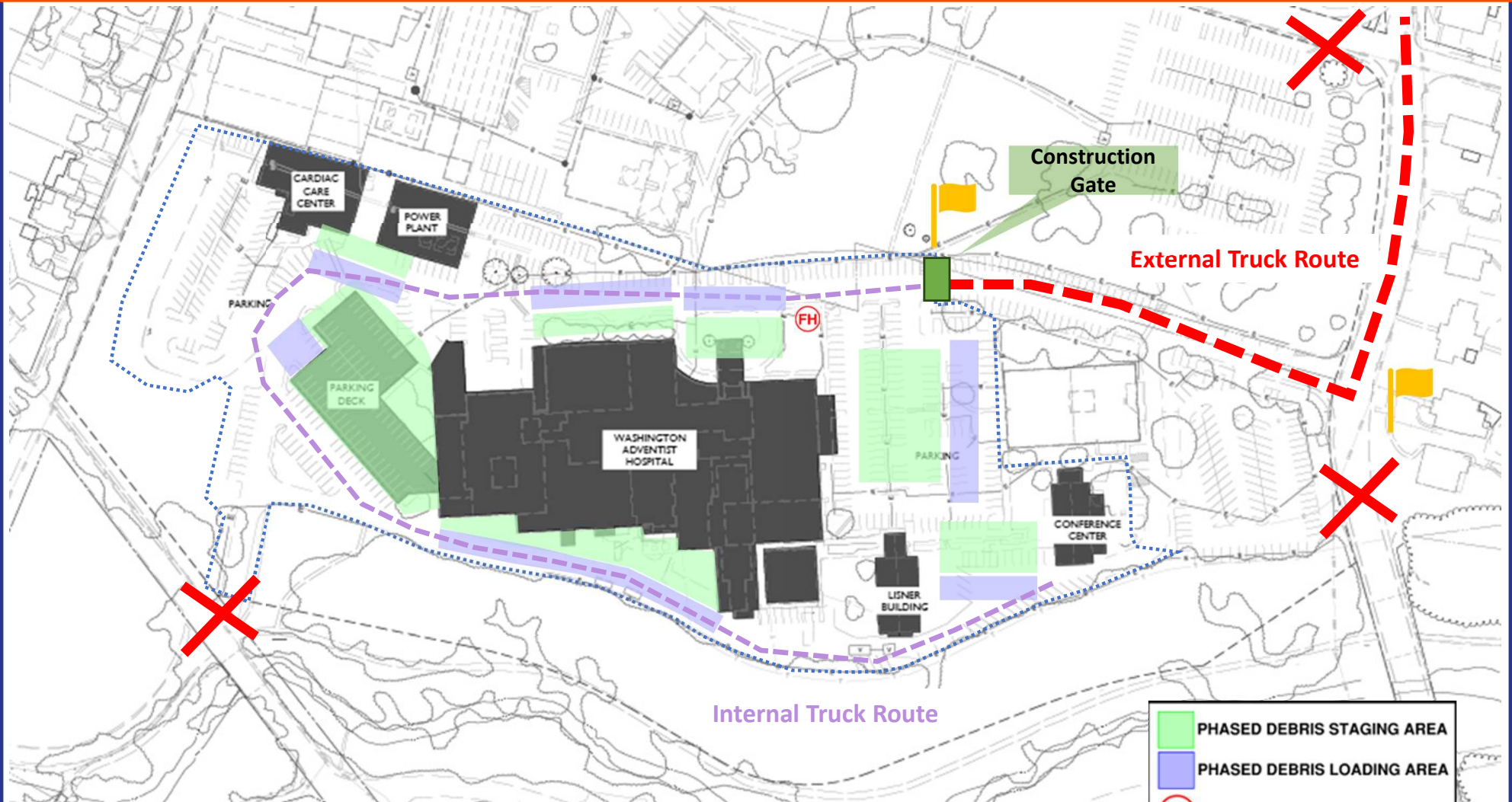
# Construction Updates – Erosion & Sediment

- **E&S Installation:** Scheduled to take place in July and August 2026 ahead of structural heavy demolition, pending required AHJ approvals.
- All safeguards will be installed in accordance with engineered plans by Rodgers Consulting that are approved by AHJ.
- Perimeter Defenses Silt Fence to prevent sediment bypass and velocity control of run off.
- Sediment Pond to capture and collect sediment and with baffle boards to maximize particle settling.
- Buffer & Entry Protection with stabilized tracking pads at construction gate to keep public roads mud-free. When asphalt features are removed.



Example illustrations

# Demolition Process - Site Fence



	PHASED DEBRIS STAGING AREA
	PHASED DEBRIS LOADING AREA
	FIRE HYDRANT FOR DUST CONTROL

Truck route

Flaggers will be used as necessary for inbound and outbound trucks to ensure safe access and exit with regular traffic



# Construction Updates – Trucking Frequency, Volume & Equipment

**Deconstruction Equipment On-Site:** Fleet includes heavy hydraulic excavators, front-end loaders, skid steers, structural cranes, and a specialized mobile concrete crushing unit.

**Truck Sizes & Hauling Capacities:** Construction & Demolition (C&D) Debris: Hauled in high-capacity 100-yard trailers. Larger container used to reduce quantity of trucks.

- Recyclable Scrap Metals: Handled via specialized 50-to-100-yard trailers.

**Daily Truck Volume & Frequency Flow:** Interior Deconstruction & Raze Operations (Summer 2026 – Winter 2027): Low-impact, steady controlled flow of approximately 10 loads per day.

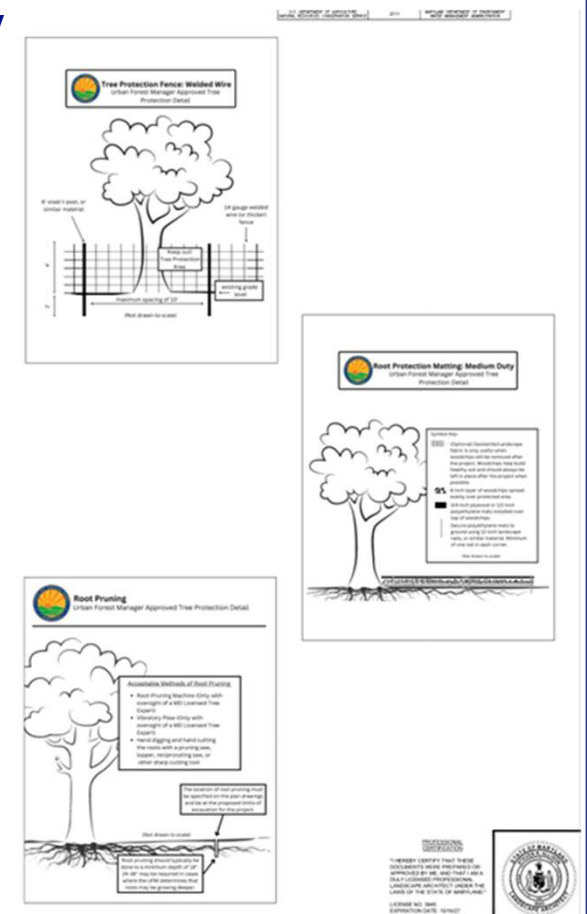
- Import Operations (Summer 2027 Site Filling): Shorter, high-frequency window of approximately 75 loads per day as clean fill is brought in to stabilize the campus footprint.



Example illustrations

# Construction Updates – Tree Protection

- **Tree Protection Installation:** Scheduled to take place in July and August 2026 ahead of structural heavy demolition, in same time frame as E&S installation.
- All tree protection will be installed in accordance with engineered plans by Rodgers Consulting that are approved by AHJ.
- Fence Protection, Root Protection Matting/Root Pruning, Trunk Protection will all be utilized as required.



# Construction Updates – Air Quality & On-Site Water Management

- **Dust Suppression:** Active water-mist suppression during all heavy demolition and structural raze activities. This prevents airborne dust.
- **Site Stabilization** with temporary straw mulch applied to inactive areas within 7 calendar days, and permanent ground cover within 3 days of reaching final grade.
- **Regulated Dewatering Operations:** Any groundwater or surface water pumped from low-level excavations must pass through an engineered portable sediment tank or filter bag. Direct pumping into city storm drains or local creeks is strictly prohibited.



Example illustration

# Construction Updates – Recycling & Material Sustainability Strategy

**Dedicated Material Separation Schedule:** July to August 2026 is designated for source-separation, material sorting, and structural recycling protocols at the hospital building. This includes separating metals, copper, etc. from non-recyclable material.

**Live Loading Efficiency:** To reduce material contamination and reduce dust generation, both general C&D debris and recyclable metals will be directly 'live-loaded' into trailers rather than sitting long-term in stagnant piles.

## **On-Site Concrete Recycling Processes:**

- Utilizes an on-site mobile crushing unit to process clean structural concrete, brick, and masonry.
- Processed aggregate will be systematically reused on-site wherever feasible, significantly reducing the total volume of truck trips required to haul waste out and bring new backfill in.

**Minimum of 50% diversion** for site's total per Montgomery County targets on waste reduction.

# Construction Updates – Noise

This project will completely avoid the use of blasting, explosives, or other high-impact demolition methods. Instead, we are utilizing less noisy controlled mechanical techniques. This approach reduces sudden decibel spikes and ground vibrations, keeping all site activities within local limits. We will use sound attenuation panels around any generators to reduce ambient noise.

## Permissible Work Hours

Weekday Work Hours: 7:00 AM to 5:00 PM. Standard construction activities are permitted during these times under relaxed daytime decibel limits. No night-time, weekend, or holiday work planned at this time.

## Decibel (dBA) Expectations

75 dBA: Standard Construction Limit (the maximum allowable limit for standard, permitted construction during the day) at property line

**Emergency Exemptions:** Public safety utility repairs, emergency infrastructure stabilization, and authorized public works are exempt from quiet hour restrictions.

# Environmental – Water Testing

**Objective: confirm no unusual change in Sligo Creek water quality during demolition**

- **Baseline stream water quality** – sample prior to demolition (matching data available from USGS)
- **For comparison to baseline** - Quarterly stream sampling during demolition (during fair weather or at least 24 hrs after rain event)
- Sample collected in stream, central to streamflow. Adjacent to site's southern boundary, near base of slope, distinct from any offsite/contributing stormwater inflow
- In-situ analysis of benchmark water quality indicators:
  - pH
  - Temperature
  - Turbidity
  - Dissolved oxygen (DO)
  - Conductivity

# Environmental – Air Testing

- **Baseline** – Collect 3 samples for particulates and one for asbestos prior to work start; set up onsite meter for testing duration.
- **Sample Analytes** – PM10 (primary concern with any heavy construction activity) and Asbestos (most prevalent hazardous material found in building)
- Northeast, Northwest, Southeast property boundaries or 75 meters from property boundary to match conservative model
- **During Demo** – PM10 sampled over 24 hour periods and Asbestos sampled over 8 hour periods for the first 7 days of demolition

# Site Security

- **Site security**

- Providing private security 24/7

- **Site Maintenance**

- Contractor on call addressing boarded up windows
- Trash collection
- Landscape maintenance

# Channels of Communication

- **Site / Emergency Contact**

- Name / contact

- **Updates and Announcements**

<https://www.adventisthealthcare.com/campaigns/wah/campus-update/>

- **Social Media**

- Facebook and Instagram

- **Mailers**

- Key project updates