

FREE COMPLETE NEWSPAPER INSIDE

Welcome 2022
to the shoreline

TWO GREAT STORES IN ONE LOCATION

PURPLE MONKEY
CHILDREN'S BOUTIQUE

Melissa & Doug

Mudd Pie • Copper Pearl
Lazy One PJ's • Angel Dear
Magnetic Me • Quincy Mae

\$10 Off

\$75 OR MORE PURCHASE
CANNOT BE COMBINED WITH OTHER SALES

Largest Selection of Melissa & Doug on the Lakeshore!



CONSIGNMENT

Clothing • Shoes • Books



123 EAST LUDINGTON AVENUE • LUDINGTON • 843-3734





Welcome to the shoreline

West Michigan greets the visitor with warm sand, sunny beaches, world-class sunsets, friendly people, and fun activities as alluring.

Situated on the sandy shore of Lake Michigan, beaches from Ludington to the White Lake area have become part of many a family's summer vacation stop for generations.

When you find something this good, why not return?

Our state park beaches such as Ludington, Charles Mears and Silver Lake can't be beat.

Walk miles of public shore in Ludington, or take a dune ride at Silver Lake.

In Pentwater, the village is close enough to walk to — and why not with a great channel walk that gets you most of the way without leaving the water's edge?

The arts blossom here. Quaint Pentwater galleries host monthly art walks.

The Ludington area is home to several superb fine arts photographers whose work is either in their own galleries or on display in stores.

There are several fine art shows and arts

and crafts fairs with local, regional and often national artists selling works.

Ludington is also home to an active arts center. It also boasts Sandcastles Children's Museum, remarkably cool with kid friendly activities and an airplane — as in a real Cessna — hanging from the ceiling that kids can "fly."

The area is rich in lumber-era history with fine lumber-baron mansions, great historical society museums in Hart, Pentwater, Mears, at Historic White Pine Village just south of Ludington and the Port of Ludington Maritime Museum.

Mason County is home to several historical and cultural heritage trails. Take a drive and see barn quilts, sculptures or lumber baron mansions.

As for outdoor recreation, this portion of the Lake Michigan coastline is second to none in opportunities for big- or small-lake fishing, with a world-class trout stream in the Pere Marquette River and the White River in Hesperia — and great stream fishing in other rivers. Take a charter boat or fish from shore on a breakwater or river

access site.

Salmon, lake trout, steelhead and inland species from muskies and pike to bass, walleye and panfish are among the most popular fish sought in the area.

West Michigan's state parks are diverse. Ludington State park, at more than 5,300 acres, offers miles of hiking trails, access to Lake Michigan and Hamlin Lake, tubing on the Big Sable River and a beach with a recently reconstructed beach house.

The Friends of Ludington State Park group sponsors a free concert and nature series at the park in summer.

The William Field Memorial Hart-Montague Bicycle Trail State Park was the state's first linear park. Four lighthouses along the shore are open to visit and to climb their towers.

White River Light Station, Little Point Sable, Ludington North Breakwater and Big Point Sable lighthouses are icons of our shorelines and favorite subjects of photographers.

The Manistee National Forest offers a variety of other activities, from off-road motorcycle trails, to wilderness camping and

hiking at Nordhouse Dunes Wilderness Area north of Ludington, camping, hiking, hunting and fishing. The North Country Trail winds through the region.

Plenty of other activities will keep you busy.

Rent a canoe and traverse Michigan's first canoe trail at Ludington State Park.

Feed elk at Amber Elk Ranch. Visit a dairy farm with great ice cream and cheese at Country Dairy in New Era. Ride or watch the National Historic Landmark SS Badger as it sails daily from mid-May through mid-October between Ludington and Manitowoc, Wisconsin.

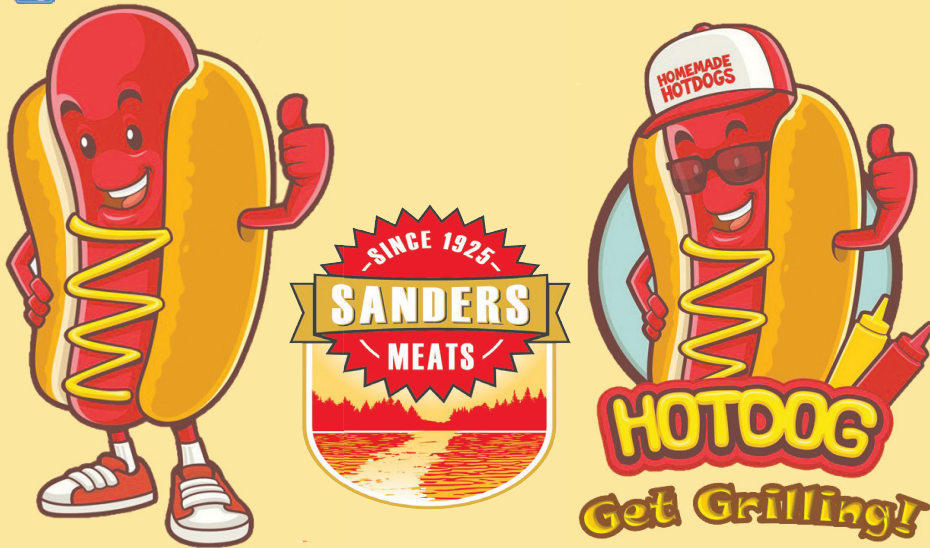
Try para-sailing, charter fishing, or shop our visitor-friendly downtowns.

Want more information? Pick up the local newspapers, Ludington Daily News, Oceana's Herald-Journal or White Lake Beacon to see what's happening when you visit.

Or visit their websites, www.ludingtondailynews.com, www.oceanaheraldjournal.com or www.whitelakebeacon.com

After you visit once, you'll be hooked — and glad you found the place you've been looking for.

SANDERS MEATS CUSTER MI



www.sandersmeats.com



Chef John's BAKERY & CAFE

HERE'S A SMALL SAMPLING
OF OUR UNIQUE MENU...

BREAKFAST

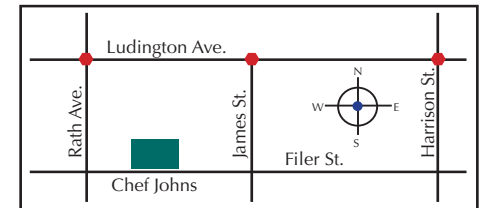
Quiche of the Day
Breakfast Torte
Nested Eggs
Eggs Roulade
Huevos Rancheros

LUNCH

Soup of the Day
Smoked Chicken
Reuben and Turkey Reuben
Grilled Chicken Salad
Brie and Smoked Ham
The Super Vegetarian
Warm Goat Cheese Salad
Mediterranean Chicken Salad

KIDS MENU WITH FREE COOKIE

110 W. FILER ST.
DOWNTOWN LUDINGTON
843-3327



MONDAY-SATURDAY BREAKFAST 8AM-11AM
LUNCH 11AM-3:30PM
TAKE OUT AND BAKERY UNTIL 4PM

BIG SHIP, MORE FUN!



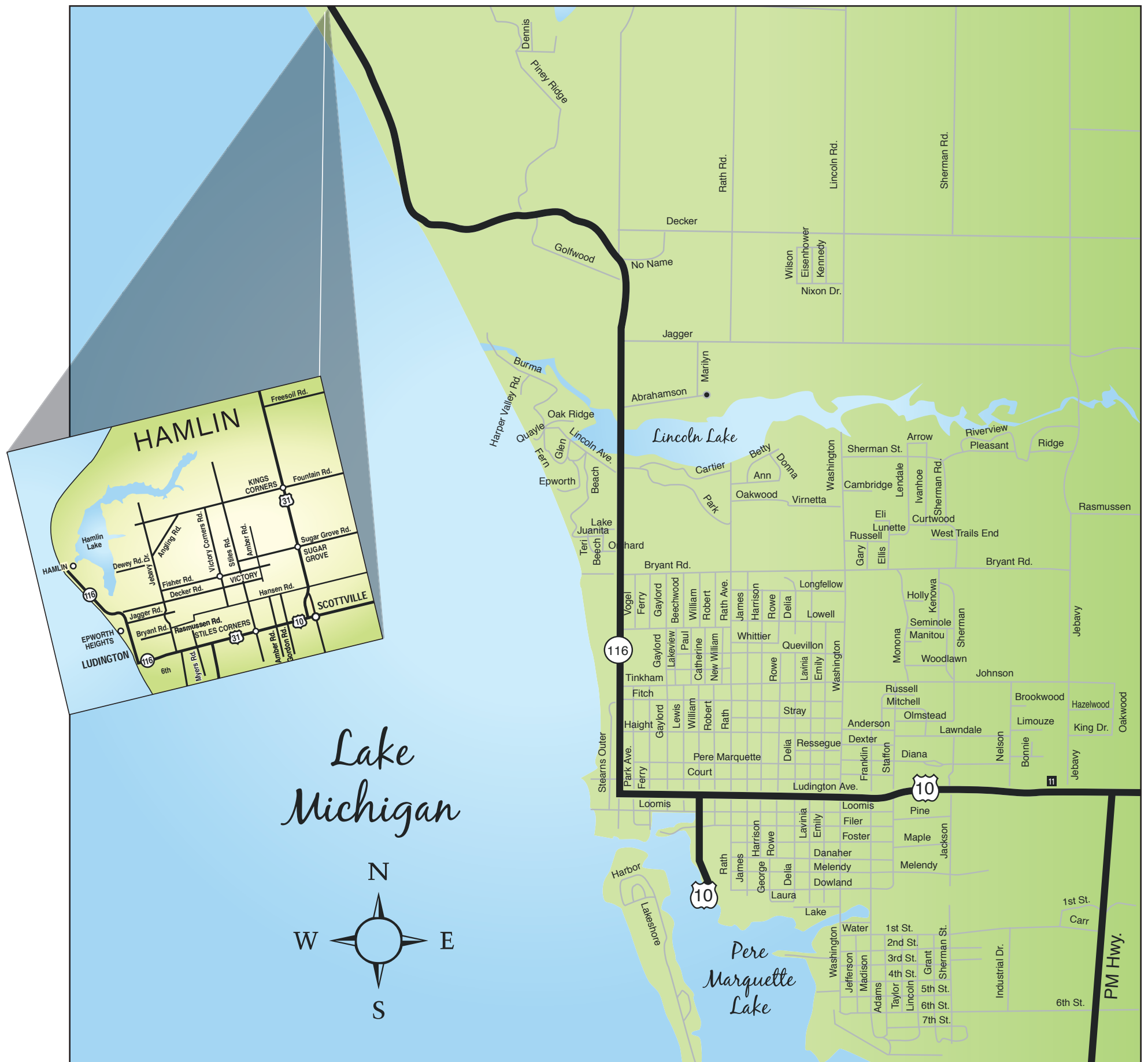
#SSBADGER

Where the highway ends, the fun begins!

 **Lake Michigan**
CARFERRY
an Interlake Maritime Services company

Buy tickets online at ssbadger.com
(800) 841-4243

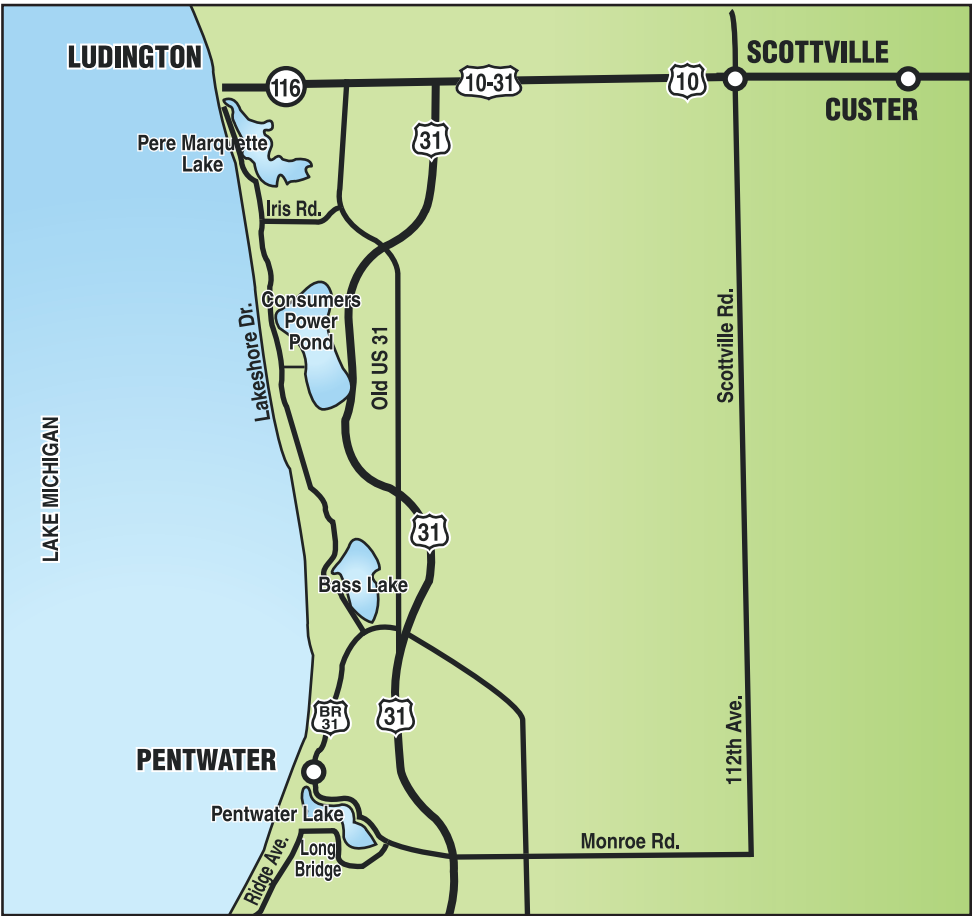
LUDINGTON AREA



LAKE MICHIGAN SHORELINE - NORTH
from Ludington north to Frankfort



LAKE MICHIGAN SHORELINE - SOUTH
from Ludington south to Pentwater



DELICIOUS IS
A BIG DEAL.

FAMILY SIZE
FOR \$6.99



www.hungryhowies.com
(231) 843-6363

PRICES AND DEALS SUBJECT
TO CHANGE WITHOUT NOTICE



FLAVOR THAT FITS ANY BUDGET

\$6.99 Sm. 2-
topping
pizza



\$11.99

Lg. 2-topping Round or
Square Pizza



\$17.99

2 med. 1-topping pizzas
and a Howie Bread®
or 2 liter Pepsi®



\$22.99

2 lg. 1-topping pizzas and
Howie Bread® with dipping sauce





3-seat Canoes
Double Kayaks
Kayaks
Rafts
Tubes

231-757-2266 600 S. Main Street, Scottville, MI 49454
www.RiverRunCanoeRental.com

GREAT FOOD and friendly people

IT'S time TO DRINK beer AND RELAX

A FAMILY TRADITION

SPORTSMAN'S

A FAMILY TRADITION FOR OVER 60 YEARS
111 W. LUDINGTON AVE. | LUDINGTON, MICHIGAN | (231) 843-2138
WWW.TAKEOUTLUDINGTON.COM

MICHIGAN CRAFTED BEER, WINE, AND SPIRITS

THE MITTEN BAR

109 W. LUDINGTON AVE. | MITTENBAR.COM

A Delicious Destination

MUFFINS ■ CAKES ■ PIES
BREADS ■ GRANOLA ■ COOKIES
CHEESE ■ MEAT AND MORE
BBQ RIBS (FRI. NIGHTS 3-8)

Country View Bakery

Open Mon.-Sat. 9 AM-6 PM
Fri. Til 8 PM

Country View BAKERY

231.425.6791
231.233.6292

5722 W. US 10, LUDINGTON (Behind Little Caesars and Bela Floral)

EMBRACE YOUR CREATIVITY!

faire heart

Creative Classes & Kits
Local Artisan Products

formerly known as **inspired parties**

Canvas painting, blacklight art, wood signs & projects, kids activities & more!

faireheartco@gmail.com FaireHeart.com (231) 510-2528

Faire Heart Studio
Drop-In Workshop & Craft Studio
3754 N Jebavy Dr.
Ludington, MI 49431

Faire Heart Centre
Artisan Boutique & Event Centre
3408 W US-10 Suite #2
Ludington, MI 49431

Faire Heart Downtown
Coming Summer 2022
inside "The Port"
222 W Ludington Ave.
Ludington, MI 49431

BEAMER'S RESTAURANT **231-757-2391**
2253 W. US 10, Ludington

Mason County's
Best Fish Fry
ALL YOU CAN EAT

FRIDAY 12 - 9 pm

Restaurant Open
5 Days a Week

★ ★ ALSO SERVING ★ ★
Pizzas ★ Burgers
BURRITOS ★ Dinners
AND MUCH MORE!

Visit us on **231-757-2391**
2253 W. US 10, Ludington

FUN FOR THE WHOLE FAMILY!

OPEN 5 DAYS A WEEK

FRIDAY & SATURDAY NIGHTS COSMIC BOWLING

\$10 Plus \$3 Shoe Rental
Call for Reservations

SUNDAY: FAMILY DAY
\$3.50 PER GAME BOWLING
\$3.50 SHOE RENTAL
NOON TO 7 PM

SPARTAN WEST BOWLING CENTER

Grand Opening - Summer 2022!



Bringing history to life!

The Mason County Historical Society is one of the largest Historical Societies in Michigan, operating both Historic White Pine Village and the Port of Ludington Maritime Museum! Research Center opening Summer 2022!

Mason County Emporium and Sweet shop at the Mason County Research Center to open on Memorial Day weekend



130 E. Ludington Ave.
Downtown Ludington

Come and meet the pioneers!

*Living History Days at Historic White Pine Village
Open Tuesday - Saturday starting May 7
Docents are on site from 11:00 am-3:00 pm daily*



**Historic
WHITE
PINE
VILLAGE**

1687 S. Lakeshore Dr.
Ludington, Michigan



Pilot a carferry across Lake Michigan!

*Open Tuesday- Saturday
starting May 7th*



**Port of
LUDINGTON
MARITIME
MUSEUM**

217 S. Lakeshore Dr.
Ludington, Michigan



MasonCountyMiHistory.org

231-843-4808



Featuring The Original
VIENNA CHICAGO STYLE HOT DOG
 Vienna Beef

Dairy Queen
 LUDINGTON
DAIRY QUEEN

Home of the
Blizzard



South of US 10-31 Intersection, Ludington
 Summer Hours: 11:00 AM - 9:00 PM

COTTAGE WORKS®

Home/Cottage Decor • Polywood Outdoor Furniture
 Docks • Boat Lifts • Swim Rafts • Seawalls




2396 W. US 10, Ludington • www.yourcottageworks.com

Victoria's
JEWELRY
 LUDINGTON, MI

327 S. James St., Ludington
 231-845-5257
victoriasjewelry.jewelersshowcase.com

**LARGEST SELECTION OF IN-STOCK JEWELRY IN GOLD,
 SILVER & CONTEMPORARY METALS.
 WITH THOUSANDS MORE AVAILABLE TO ORDER.**

Master Jeweler with 40 years experience.
 All jewelry repairs done on premises.
 APPRAISALS, ring sizing, stone replacement,
 solder repairs, remounts, custom design & more.
 Watch battery & band replacement.

Michigan's Diamond Destination!

FANTASTIC OFFERING OF ENGAGEMENT
 RINGS & BRIDAL JEWELRY

DESIGNER LINES AND
 VINTAGE JEWELRY






VISIT US ON
 FACEBOOK OR
 CALL THE STORE
 FOR HOURS

Check us
 out on

Lake Michigan water safety

Each year, Ludington State Park's visitors are drawn to the coastal dunes and sandy beaches of Lake Michigan. On a hot summer day, there is nothing better than jumping into this wonderful, unsalted sea to cool off.

The big lake can be dangerous. Conditions can change with little notice. Throughout the day, all summer, park staff monitors the lake conditions and fly flags indicating the swimming hazard.

These flags are located at the park entrance and on the beach side of the Lake Michigan beach house.

The park's beaches do not have life guards and all visitors swim at their own risk; however, rescue throw buoys and life jackets are located at points along the designated swim beach in the event of an emergency.

A limited number of loaner life jackets are also available for use by visitors.

Days when waves are large can be fun, but they come with the possibility of long-shore or rip currents being present.

Before entering the water, visitors should learn how to react to getting caught in one

IF CAUGHT IN A RIP CURRENT

STAY CALM: Don't panic. Focus on breathing and keeping your head above water.

SWIM TO the side, parallel to shore, then back to the shore: If tired, switch between swimming and floating until you reach shore.

IF IN danger: Face the shore and call for help.

IF SOMEONE else is caught in a rip current, call 911 and use the rescue equipment to assist them. Wear a life jacket if you must enter the water.

of these currents. Signs located along the beach and at life-saving equipment kiosks explain the best methods for getting out of rip or long-shore current. See sidebar for more details.

To learn more about Great Lakes beach safety, visit www.dangerouscurrents.org, and to learn the latest beach forecast for Ludington State Park, visit the beach forecast page of the Grand Rapids National Weather Service Office.



TIRE IT WHOLESALE

Don't Let a Bad Tire Ruin Your Vacation!

TIRES • BATTERIES • WHEELZ
FOR MOST AUTO • LIGHT TRUCK • MOTORCYCLES



COOPERTIRES AT3



WE HAVE TRAILER TIRES & PARTS!

Call Bill Collier or Mark Sanford

231-843-3639

Most Major Brands Available • 388 Jebavy Dr., LUDINGTON

BREAKFAST & LUNCH

made fresh all day!



Order Online @
Ludington.OrderBigAppleBagels.com



Something **big** is always baking.

5487 W. U.S. Hwy 10, Ludington
231-843-9111

www.BigAppleBagels.com



Ray's Marina & Campground
CAMPsites & BOAT SLIPS AVAILABLE
231-425-8719

22'x55' Cement Pads • 50 Amp Service
Full City Water & Sewer Hook Up • Wi-Fi
Direct Lake Michigan Access Through PM Lake

We Love Families & Fishing!

**HOME OF THE
STATE
RECORD
SALMON**



801 S. WASHINGTON AVE., LUDINGTON



CAMPING AT ITS BEST!

- Rental Cabins - Sleeps 6-8!
- 265 Full Hook-Up Grassy Sites
- 92 Sites are Drive Through
- 3 Heated Swimming Pools & 2 Spas
- 2 Miles to Lake Michigan
- TV Hook-Ups
- Wireless Internet • Fitness Room

Immaculate showers & restrooms, indoor pool, laundry room, planned activities, playground, pavilion, video games, lighted paved roads and even a children's fishing pond.




On PM Highway one block south of US 10 (behind McDonald's)
(231) 845-6655 • www.poncho.com • Reservations 1-888-308-6602

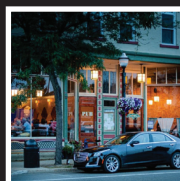
Enjoy a glass of wine or beer while the kids play with the animals!



Stay for lunch and enjoy the Sandwich Bar

Panini • Soup • Beer • Wine • Local Produce • Baked Goods • Specialty Foods
Boar's Head® • Meats & Cheeses • **FREE** Petting Barn!

 **3890 W Monroe Rd • Hart MI • 231.301.8601**



D O W N T O W N
LUDINGTON

2022 DOWNTOWN LUDINGTON EVENTS

LIVE IN THE PLAZA // Thurs & Fri // May 26-Sept 23

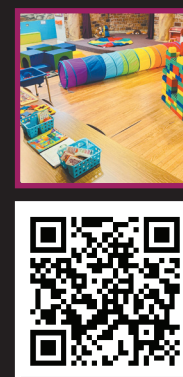
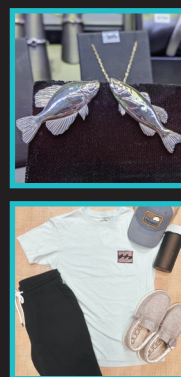
ARTISAN MARKET // Thursdays // May 26-Sept 22

FARMERS MARKET // Fridays // May 27-Sept 23

#RUNLUDINGTON 5k/10k // May 21, Oct. 29

OCTOBERFEST // September 24

NEW YEAR'S EVE BALL DROP // December 31



A year round destination for family activities, maritime history, live music and art with nationally recognized food, brews, and sunsets.
Learn more at www.DowntownLudington.org

Historic beacons still shine strong

The Lake Michigan shoreline from Montague to Ludington features a number of historic lighthouses. These towering beauties are full of lore, deeply identified with the community and as iconic as castles are to Europe.

The White River Station in Whitehall, Little Point Sable Lighthouse near Mears, Ludington North Breakwater Light and Big Sable Point Lighthouse in Ludington State Park all offer a chance to learn about and experience lighthouses.

The lighthouses and grounds are operated by SPLKA (Sable Points Lighthouse Keepers Association) a non-profit which proudly manages three historic lighthouses within a 30-mile stretch of Lake Michigan's shoreline. Since 1987, their mission has been the restoration, preservation, education and accessibility of their lighthouses. SPLKA also operates a Volunteer Keepers program which allows its members the opportunity

to live and work within the lighthouses during the seven-month season, May through October.

Little Point Sable Lighthouse

The 107-foot-tall red brick Little Point Sable Lighthouse was built in 1874 and occupies the western-most point of land in Michigan's Lower Peninsula.

The lighthouse is operated by the Sable Points Lighthouse Keepers Association (SPLKA) and is located within the Silver Lake State Park in Oceana County's Golden Township.

With a donation fee, guests are allowed to climb the lighthouse's 130 steps to take in the view from atop this glorious landmark. Children must be more than 3 feet tall. Little Point Sable is open for tours daily from 10 a.m. to 5 p.m., spring through early fall.

Big Point Sable Lighthouse

Nestled among jack pines, just a quick two mile walk along a breathtaking trail, stands Big Sable's noble black and white tower. At more than 100 feet tall, this historic beacon is a huge attraction for its owner, Ludington State Park. Visitors are welcome to explore the grounds, tour the original Keeper's Quarters which have been converted into a Gift Shop, stroll along the sand dunes or climb the tower. Open daily from May 8 to Nov. 4, from 10 a.m. to 5 p.m.

Ludington North Breakwater Light

Just down the shore from Big Sable stands the Ludington North Breakwater Light. This 1924 light is also open for tours and tower climbs and boasts a vibrant green

light from its tower. The Breakwater Light is at the end of a half mile walk down the pier, and is exquisite in its design.

Volunteer Keepers are welcome at this light as well, and enjoy living accommodations just within Ludington State Park. Open for tours daily from 10 a.m. to 5 p.m. spring through early fall, unless the breakwater is closed due to high waves.

White River Light Station

The White River Light station was built in 1875, just four years after the Great Chicago fire. A channel was dug in 1870 between Lake Michigan and White Lake to facilitate the access of lumber schooners. The light station was decommissioned in 1960 and opened its doors as a museum in 1970 under the ownership and management of Fruitland Township. Climb to the top of her tower or wander around the museum and grounds.

New FOR 2022! PREMIUM FULL HOOKUP SITES

CALL OR TEXT (231) 843-3995

KIBBY CREEK CAMPGROUND
EST. 1972

KIBBYCREEKCAMPGROUND.COM

Celebrating 50 YEARS of family memories



\$5⁹⁹
Hot-N-Ready
LARGE CLASSIC
PEPPERONI OR CHEESE



\$6⁹⁹
Hot-N-Ready
EXTRA MOST BESTEST
PEPPERONI OR CHEESE



\$4⁵⁰
Hot-N-Ready
CRAZY COMBO



\$7⁵⁰ *Hot-N-Ready*
CAESAR WINGS



\$5 **ITALIAN CHEESE BREAD**

Little Caesars®

LUDINGTON

5720 Ludington Ave.

(231) 845-5178

One Block West of Jebavy Dr.

MAKE IT A MEAL

Add one Crazy Combo® (8-piece order) and a 2-liter PEPSI-COLA® PRODUCT to any pizza

only **\$6⁵⁰** more



FOR IN-STORE PURCHASE ONLY
OFFER EXPIRES 10/16/22. Valid only at participating Little Caesars® locations. Not good with any other offers. Plus tax where applicable.

\$8⁵⁰ DETROIT-STYLE DEEP DISH

One large deep dish pizza with Pepperoni or Cheese



FOR IN-STORE PURCHASE ONLY
OFFER EXPIRES 10/16/22. Valid only at participating Little Caesars® locations. Not good with any other offers. Plus tax where applicable.

\$11 CLASSIC PIZZA! PIZZA!®

Two large round pizzas with Pepperoni or Cheese



FOR IN-STORE PURCHASE ONLY
OFFER EXPIRES 10/16/22. Valid only at participating Little Caesars® locations. Not good with any other offers. Plus tax where applicable.

Available at participating locations.
©2022 LCE, Inc. CR0019381