

MBTA Contract H62CN02 Beverly Drawbridge Swing Span Replacement



**Newburyport and Rockport Line over Danvers River
Beverly Draw (B-11-015)
Beverly/Salem**

Location Map – Beverly Draw Newburyport and Rockport Line



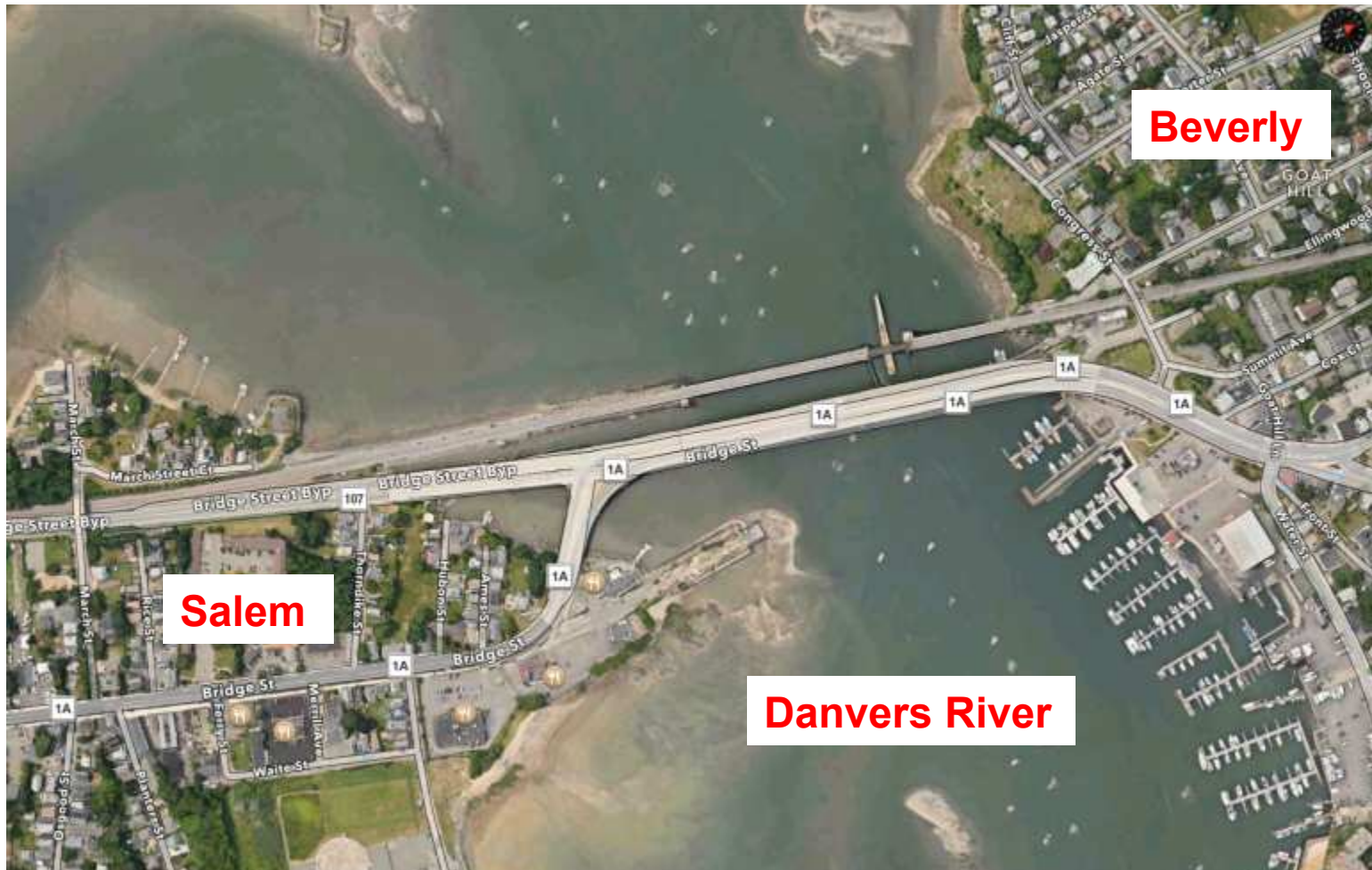
Beverly Drawbridge General Description

1. 104' Swing Span with a Center Pivot Pier (1885)
 - Provides 2 Navigation Channels (40' North & 39' South)
 - 6' Vertical Clearance at MHW
 - 9' Tidal Range
2. 524' South (Salem) Approach (1985)
3. 279' North (Beverly) Approach (1985)
4. Carries 2 Commuter Rail Tracks
5. No Freight Traffic
6. Weekdays: (31 Trains Inbound & 31 Trains Outbound)
Weekends:(13 Trains Inbound & 13 Trains Outbound)

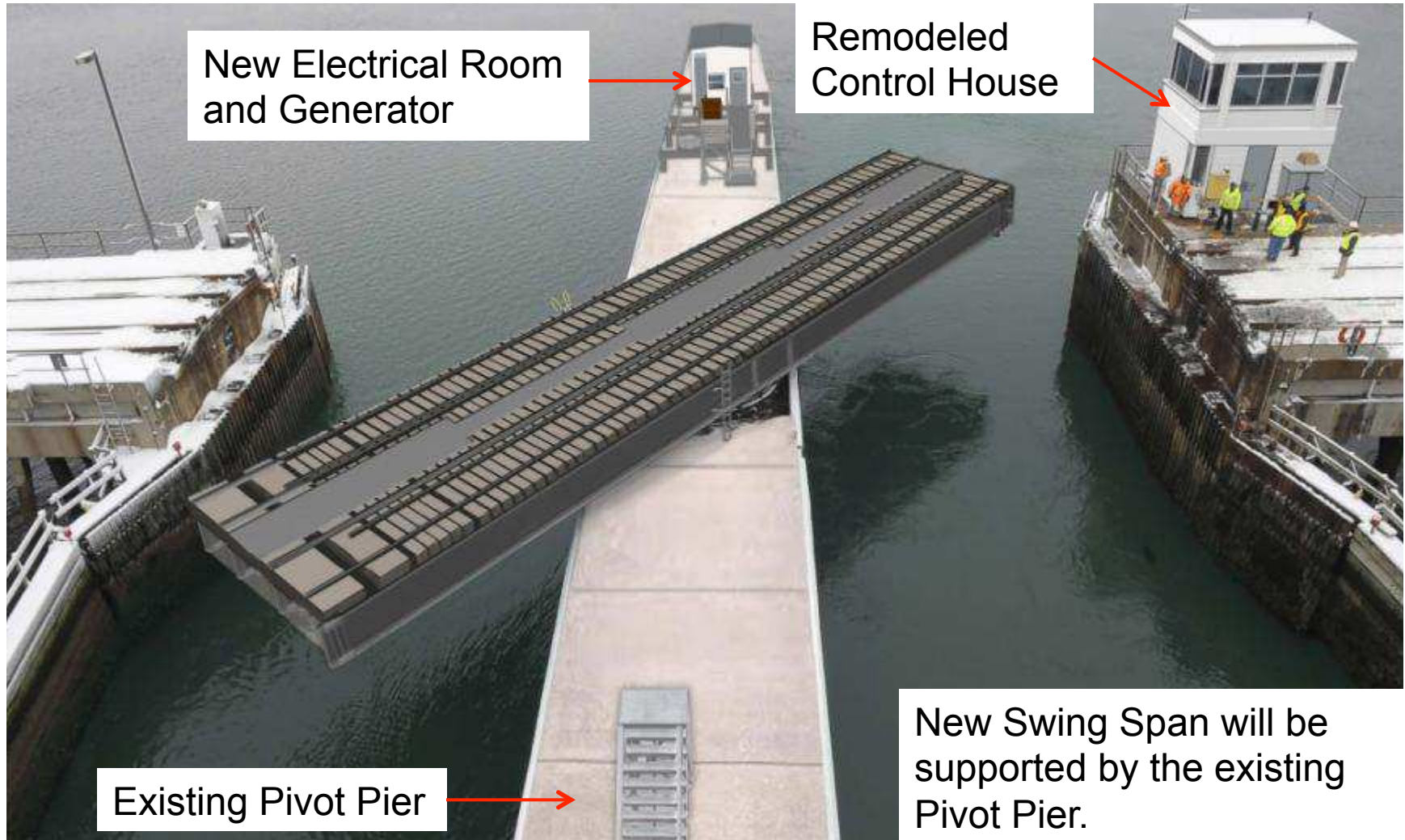
Beverly Drawbridge General Description (Cont'd)

7. Bridge Opens 5,000 Times per Year
 - 20 per day from May to October
 - 9 per day from March to April and November to December
 - 3 per day from January & February
 - USCG requires bridge to be open within 10 minutes of a request

Existing Site Plan



Proposed Swing Span – Contract H62CN02



Construction Schedule and Cost

Schedule:

- NTP = March 3, 2016
- Total Duration = 648 Days from NTP
- Final Completion = December 23, 2017

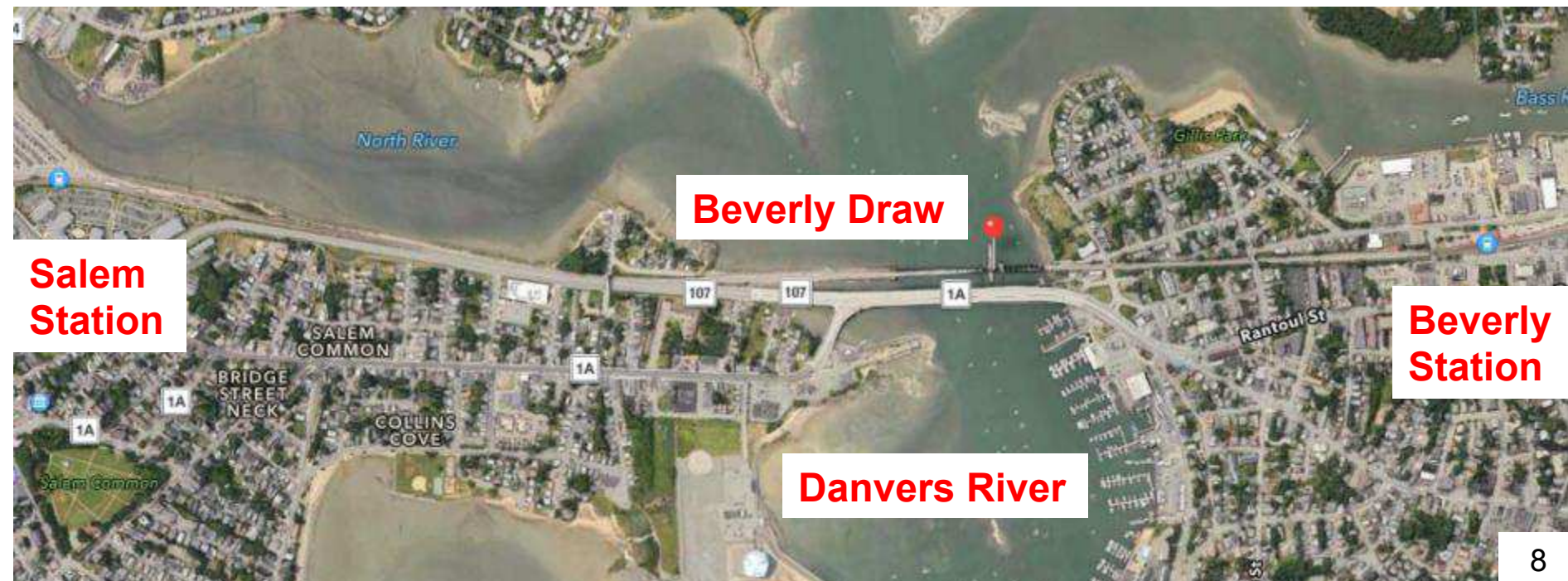
Contractor:

- JF White Contracting Co.
- Contract #H62CN02 (Swing Span Replacement) - \$16,177,594.00

Proposed Rail Service Shutdown

28 Day Shutdown: July 17, 2017 – Aug. 13, 2017 for the Swing Span Replacement.

- New Swing Span floated out on barge from Alabama on June 22, 2017.
- Arrive in Beverly on or before July 8, 2017.
- No Rail Service from Salem to Rockport and Newburyport.
- Replacement busing service to be provided during shutdown.

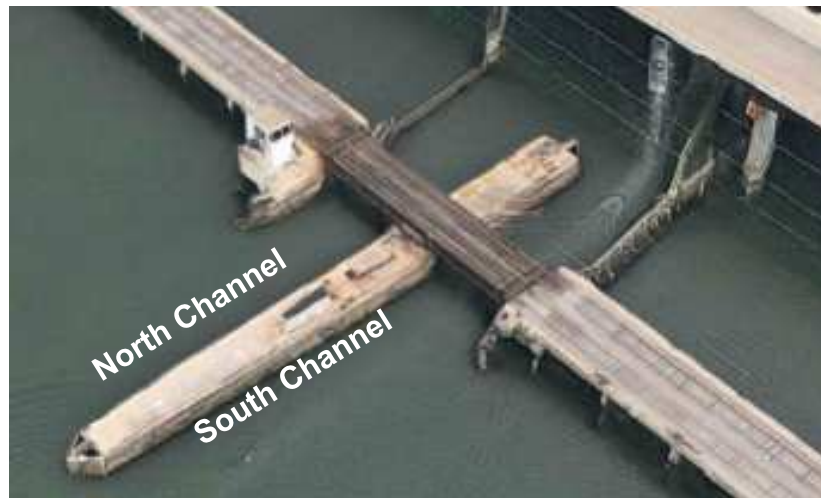


Disruption to Marine Traffic

Marine Traffic (Channel Closures – Harbor Police Required)

During 28 Day Shutdown (July 17, 2017 – Aug. 13, 2017):

- Both Channels: Maximum 3 Days to Remove Existing Swing Span
- One Channel: to install New Center Pivot on Pivot Pier
- Both Channels: Maximum 3 Days to Float-in New Swing Span
- One Channel: to Complete Mechanical & Electrical Installation & Testing



Construction Activities for 28-Day Outage - Overview

- Remove Existing Swing Span
- Install New Center Pivot
- Install New Swing Span
- Install Mechanical and Electrical Components
- Remove, Adjust & Replace Track Structure on Approaches
- Remodel Control House
- Complete Timber Fender Rehabilitation and Installation of Navigation Lighting
- Perform Startup and Functional Testing of Bridge Components and Control System
- Train Bridge Operator (Keolis)
- Perform Federal Railroad Administration Signal Testing and Rail Line Maintenance Prior to Resuming Rail Service

Public Outreach

1. Meeting with Delegates at the Statehouse – 2/26/15
2. Community Meeting at Beverly High School – 4/1/15
3. Congressman Moulton Meeting – 7/17/15
4. Community Meetings held in Gloucester (6/5/17), Beverly (6/6/17), and Newburyport (6/8/17)