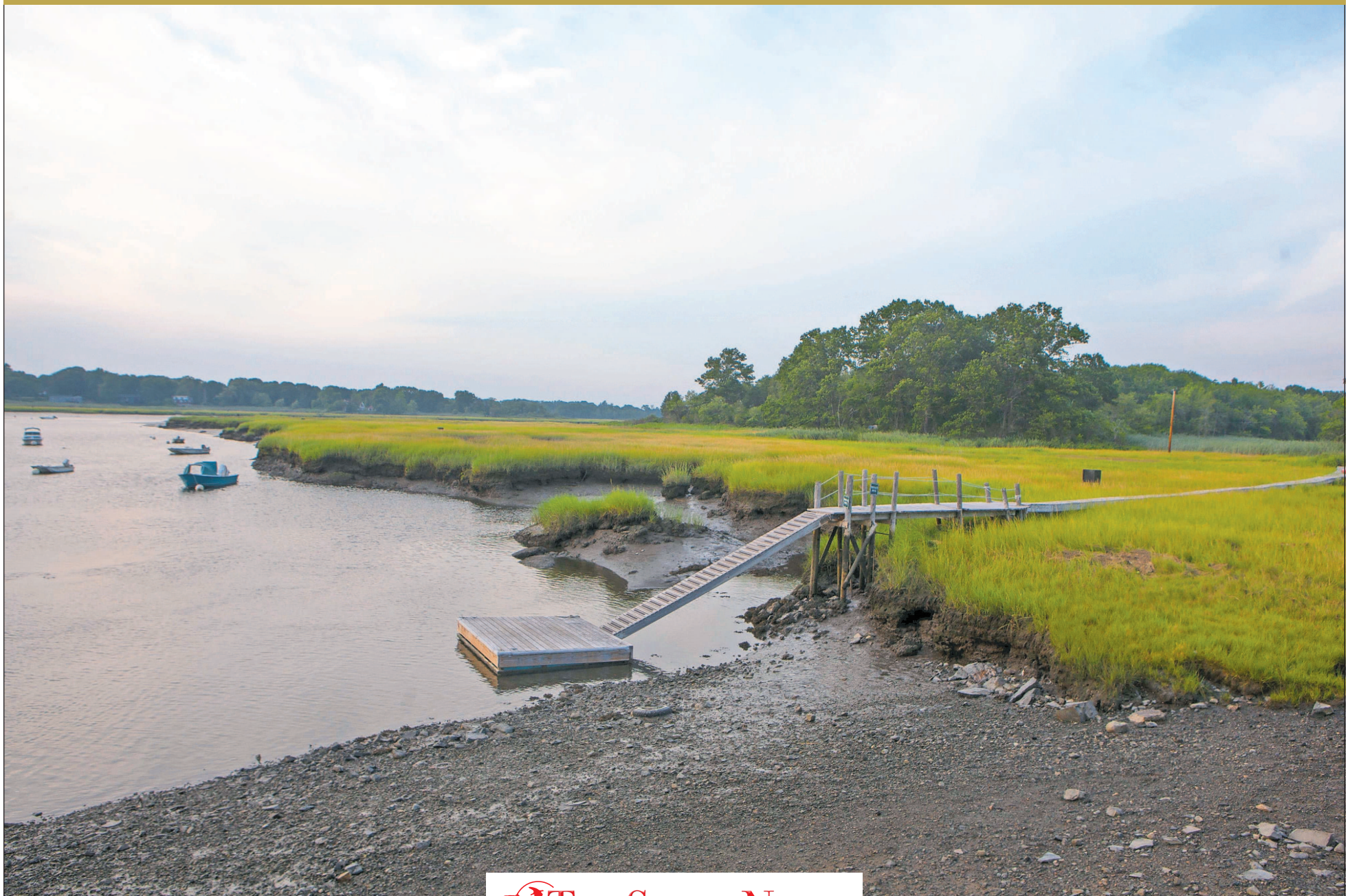


DESTINATION IPSWICH

WHERE TO GO • WHAT TO SEE • WHAT TO DO



AMY SWEENEY/Staff photo

 THE SALEM NEWS

S I N C E 1 9 3 5

Marcorelle's

FINE WINE, LIQUOR & BEER

FOUR GENERATIONS

Trust in Our Family Business

Marcorelle's Fine Wine, Liquor & Beer

Specializing in beverage catering, functions and delivery since 1935.

30 Central Street, Ipswich, MA 01938, Phone: 978-356-5400

Proud retailer of Ipswich Ale Brewery products



★ **IPSWICH ALE BREWERY** ★

Visit ipswichalebrewery.com for brewery tour & restaurant hours.



Family Owned & Operated Since 1922



- Send someone flowers, make someone happy
- Colorful Hanging Baskets and colorful flowering plants for all summer beauty
- Annuals and Perennials galore
- Fun selection of quality succulents & air plants
- One of a Kind Gifts & Cards



GORDON FLORIST



AND GREENHOUSES

www.gordonblooms.com



24 Essex Rd. | Ipswich, MA | 978.356.2955

RECREATION

Explore the sprawling waterways and trails

Visitors looking to get outdoors in Ipswich may want to try the waters at Crane Beach, or watch birds at the Hamlin Reservation, two Trustees of Reservations properties.

Crane Beach is also the spot for hiking trails, which pass through pine groves on their way to the Essex River. The beach can also be used by equestrians and dog walkers from October through March, with permits required for both activities.

Above Crane Beach, on Castle Hill, there are a number of trails to walk. Tours of the Crane Estate's Great House, which includes rooftop views of the ocean and nearby islands, and a tree-lined "allee" that

sweeps down to the sea, are available through the end of October.

There are other Trustees properties in Ipswich with hiking trails, including Greenwood Farm and Appleton Farms.

Greenwood Farm features 2.5 miles of easy walking trails, with views of the historic First Period Paine House, and the broad estuary of the Ipswich River extending beyond.

There are beautiful trails that reach an overlook at Appleton Farms, where visitors can also admire the dairy herd and a store where they can buy dairy products made on the farm. Easy walking trails can be found on the



Crane Beach is one of the most popular go-to spots for playing on the sand and in the water.

6 miles of footpaths, bridle paths and farm roads that crisscross the farm.

Willowdale State Forest off Linebrook Road offers 40

miles of trails, as well as fishing and boating on the 100-acre Hood Pond. The eastern block of the forest abuts Bradley Palmer State



AMY SWEENEY/Staff photo

The rooftop views from the Great House at the Crane Estate include the "allee" that leads to the Atlantic Ocean.

Park and the Ipswich River.

The Bay Circuit Trail, a 200-mile recreation trail, also travels through Ipswich

as well as several other towns in this part of the state.

One cannot forget the Essex County Greenbelt Association, which is the largest land conservator in Essex County. Trails abound throughout Greenbelt's properties.

Boating and kayaking are popular in Ipswich, in both the bay and on Ipswich River.

Foote Brothers Canoe & Kayak Rental rents canoes and kayaks for trips on the Ipswich River, which winds through the Willowdale State Forest.

For anyone looking to spend a long day on the water, Foote can transport paddlers upstream so they can drift back.

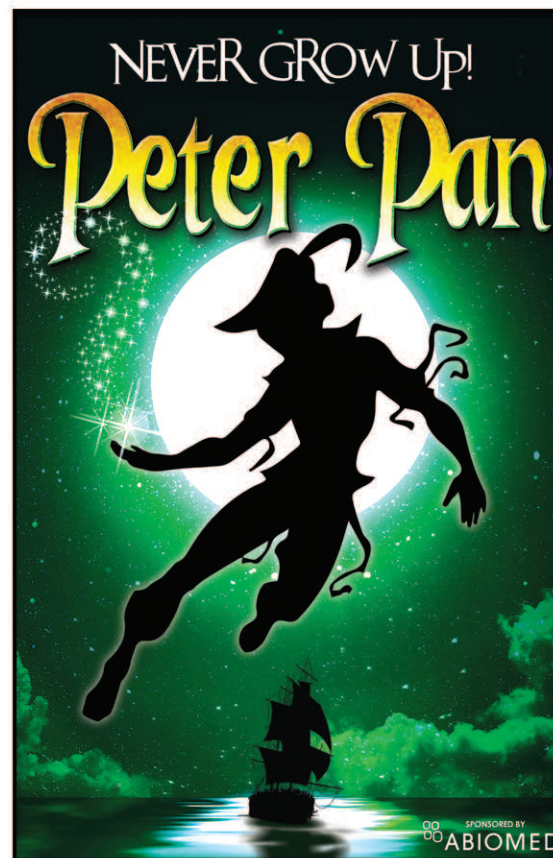
SUMMER'S BEST LIVE MUSICALS!



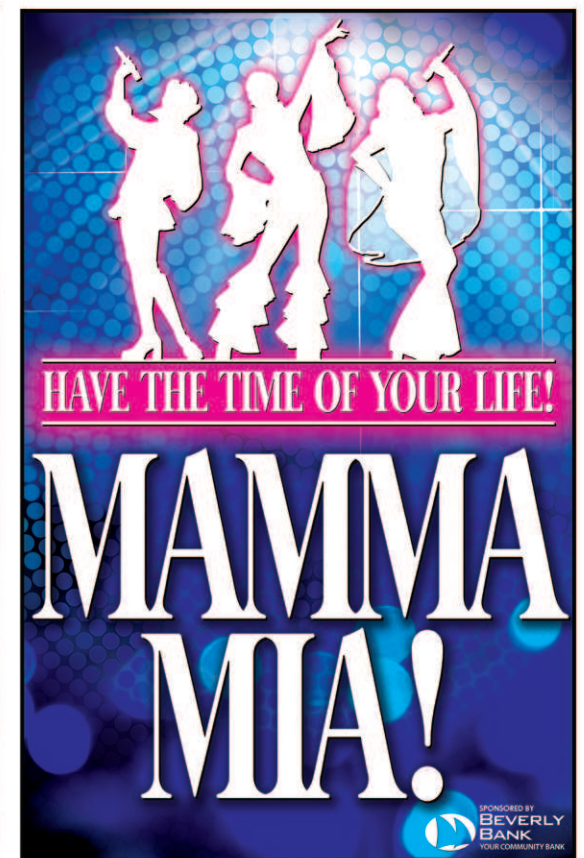
BILL HANNEY'S NORTH SHORE MUSIC THEATRE



978.232.7200 NSMT.ORG
IN PERSON: 62 DUNHAM ROAD, BEVERLY, MA



JULY 10 - 22 | KIDS SAVE 50%

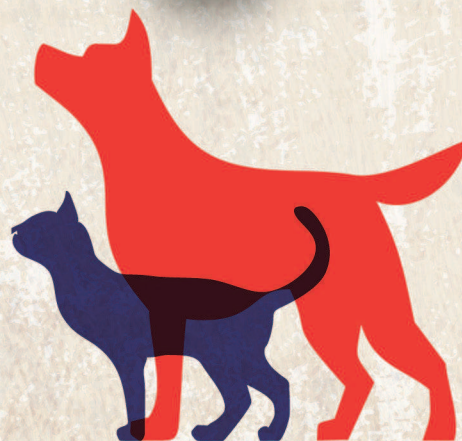
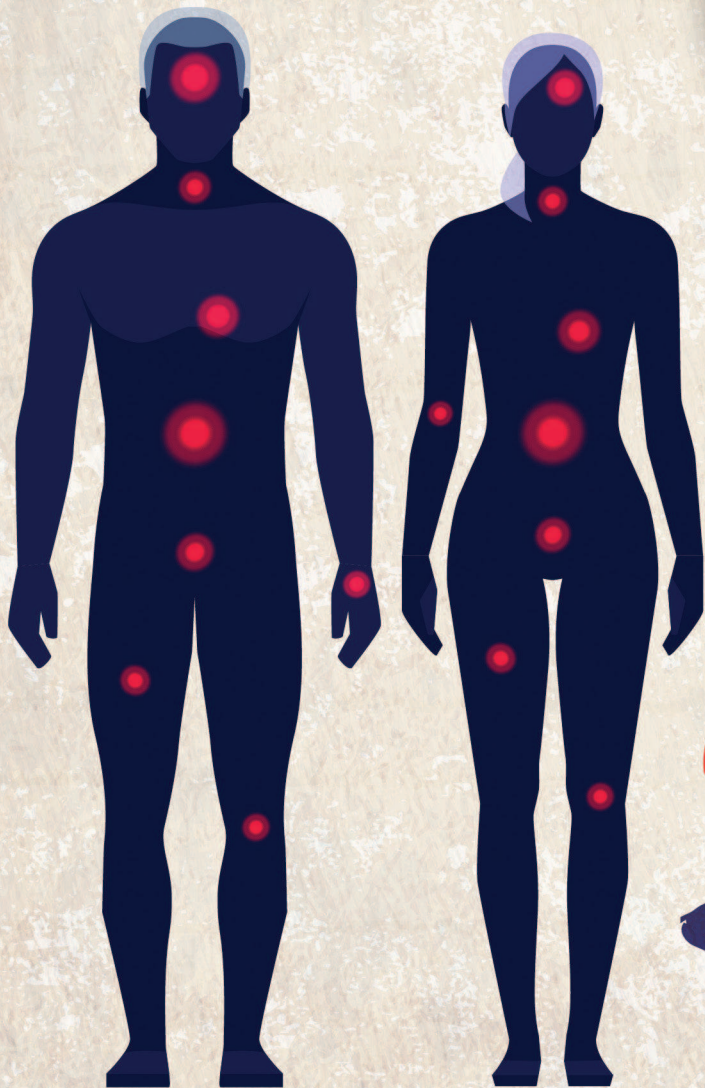


AUGUST 7 - SEPTEMBER 2

CAPE ANN BOTANICALS


FOR A BALANCED BODY AND MIND

8 Central Street • Ipswich • MA
978-356-3493 • capeannbotanicals.com



NOW OPEN!

**Providing Hemp Based Cannabidiol Solutions for;
Pain Relief, Exercise Recovery, Skin Care, Immune System
Support, Positive Mood Balance, Pet Health, and More!**

Our Services Include;  Nurse Consultations,
CBD Treatment Plans, Endocannabinoid
Education, and Certifications for Massachusetts'
medical use of marijuana program.

The human endocannabinoid system is a network
of receptors spread throughout the body that
control some of our most vital life functions,
including our immune system, memory, appetite,
sleep pattern, mood and pain sensation.

SHOP HOURS

Monday: Closed

Tuesday-Friday: 11am - 7pm

Saturday: 10am - 5pm

Sunday: 11am - 4pm

FIRST PERIOD

Houses take a step back in time

By WILL BROADDUS
STAFF WRITER

Anyone who wants to see the beauty of Ipswich, while also exploring the town's history, should pick up a self-guided audio tour at the Ipswich Visitor Center inside the Hall Haskell House.

Ipswich was settled in 1633 and is one of the oldest towns in Massachusetts, which means there's a lot of history to explore.

The Hall Haskell House, at 36 South Main St., embodies a lot of Ipswich history in its own structure, which dates back through a series of incarnations and owners to 1691.

That makes it a great point of departure for visiting First Period homes, which were built between 1626 and 1725. There are 60 of these in Ipswich — more than any other town in the country — many of which are clustered downtown.

They include the Lummus House, at 41 High St., which was originally built in 1686 before being rebuilt in the 18th century. It was recently restored and includes many First Period features.

The Waldo Caldwell House, at 33 High St., was originally the address of Simon Bradstreet, whose wife, Anne Bradstreet, was America's first poet. They were a power couple; Simon eventually served as Massachusetts Bay Colony's governor, and Anne was the daughter of Thomas Dudley, another governor of Massachusetts.

The house that stands there now was built sometime before 1652 by Cornelius Waldo, who sold



The Whipple House, built by Capt. John Whipple, is owned by the Ipswich Museum.

it to John Caldwell two years later.

The Kingsbury House, at 52 High St., features an impressive, broad façade and several chimneys, and was built around

1660 by Henry Kingsbury. It was purchased in 1669 by Robert Lord Jr., a member of the family for whom Lord Square in Ipswich is named.

The Thomas Lord

House, at 17 High St., was built in 1658, and stayed in the family for many generations.

Ipswich Museum's Whipple House was originally built as a townhouse,



The Tilton-Smith house at 168 Argilla Road is among the list of First Period homes in Ipswich.



The Daniel Lummus House, center, is located on High Street and was originally built in 1686 in the neighborhood where poet Anne Bradstreet lived and wrote.

near the center of town, by Capt. John Whipple, with the oldest part of the home dating to 1677. The house is filled with 17th- and 18th-century furnishings and decorative arts.

Not all the First Period homes in Ipswich are downtown. For those visiting by car, the Paine House, at 47 Jeffreys Neck Road, dates to 1694, while the Shatswell Cottage, at 52 Jeffreys Neck Road, dates to 1650.

History didn't end in 1725, of course, and houses continued to be built in Ipswich, including the Treadwell-Hale

House at 52 North Main St., which dates back to the 18th century.

The beautiful Capt. Israel Pulcifer House at 6 Meetinghouse Green, originally built during the Federal Period, had a mansard roof added in 1870.

The 1800 Heard House, another one of Ipswich Museum's properties, was built by John Heard toward the end of his successful career as a merchant, distillery owner and politician. The home is filled with original architectural detail, furnishings and artifacts.

File photos



THE GREEK ORTHODOX CHURCH OF IPSWICH

GREEK FESTIVAL 2018

CELEBRATING OVER 100 YEARS OF TRADITION

- Roasted Lamb • Greek Specialties • Greek Salads • Baklava Sundaes • Loukoumathes
- Homemade Greek Pastries • Greek and American Dancing • Music All Day Long
- Live Dance Performances • Exciting Raffle Prizes • Fun and Entertaining for the Entire Family!

SAT, JULY 14 1PM-11PM / SUN, JULY 15 1PM-DUSK

THE HELLENIC CENTER, IPSWICH, MA

Junction of Routes 133 and 1A, Ipswich, MA • Take Exit 20N on Route 128

- Admission \$5.00 (valid for both days) • Children under 10 are still free • Plenty of FREE Parking

www.greekfestivalipswich.weebly.com



CELEBRATING 113 YEARS 1905 - 2018

Nursery and Garden Center

31 Essex Rd. (Rte. 133), Ipswich, MA 01938

Make "shopping" at Corliss a "growing" habit!

HISTORY

BRIDGE WITH A PAST

Town's Choate Bridge has stood for more than 250 years, but not without difficulty

STAFF WRITER

The story of the oldest stone arch bridge in English-speaking America is all the more remarkable because many thought it would not even survive its grand opening.

There was some reason for their trepidation.

The bridge was designed and its construction overseen by Col. John Choate. He was a man of letters and a member of the provincial government, but he had no experience building a stone bridge. What's more, at the time of its construction in 1764, no other stone arch bridges had been constructed in this country.

It was said, likely by some wag in jest, that as the scaffolding supporting it during construction was being removed from the bridge Col. Choate had a swift horse tethered nearby, the better to outrun his detractors should their criticisms prove true.

Choate's wisdom was affirmed when the bridge safely opened to travel, and it has stood largely unchanged for 254 years, though it has been sorely tested on occasion.

The bridge not only connects the south and north sides of Ipswich, it also carries traffic on busy Routes 1A and 133. It is also a link between the downtown and the South Main Street district some call SoCho, for South of Choate.

By the 1980s, the bridge was at a critical juncture, a point reached by any old structure after a period of neglect. It would either be adopted by a champion of its virtues, or continue to decay until salvation was no longer possible.



PAUL BILODEAU/Staff photos

The Choate Bridge's design is simple and elegant, yet durable and fragile.



The Choate Bridge is a National Historic Landmark.

The town's longtime historian, Mary Conley, successfully lobbied to preserve the iconic bridge, and in 1990 she won the Preservation

Award from the Massachusetts Historical Commission for her efforts.

A more recent peril to the bridge's very foundations

came after Mother's Day in 2006. Four straight days of torrential rain had swollen the Ipswich River to dangerous heights. The stones and sand carried by the rushing water were scouring the bridge's abutments and center pier.

Fear of a collapse was so great that the bridge was closed, and even pedestrians were prohibited from crossing it. The state Highway Department stepped in, since the bridge is a vital link for traffic between the North Shore and Cape Ann and Newburyport.

The bridge's footings were successfully repaired and reinforced, and it is now stronger that it was before

the great storm.

One of the bridge's most notable crossings was by another old structure itself in need of care.

In 1927, the Ipswich Historical Society was located in the Whipple House, on land that was then the Sylvania parking lot. The society had purchased land near the South Green for its 300-year-old home, and the B.F. Goodwin Co. of Marblehead, nationally known for its skill moving large buildings, was hired to bring the Whipple House to its new home.

Loaded onto dollies, the house was slowly towed up Market Street to South Main Street. When it reached the

bridge, it was raised high enough to clear the stone railings, and made the journey over the river safely.

The Choate Bridge's design was simple, elegant, and at the same time durable and fragile. While weight is the enemy of other bridge designs, stone arch bridges become stronger when weight is added to them. In theory, they can carry as much as their abutments can displace.

But remove one stone from the arch, and the whole structure comes tumbling down.

With care, Col. John Choate's iconic bridge should be standing in the heart of town for another 254 years.

Super Subs of Ipswich

UNDER NEW OWNERSHIP AND MANAGEMENT
Great Subs - Great People
New menu items
Toasted Subs - Paninis



Hours
Mon-Tues 7a - 6p
Wed - Sat 7a - 8p
Sun 8a - 3p

5 B Wildes Ct. • Ipswich • 987-356-0900



Russell Orchards Farm and Winery

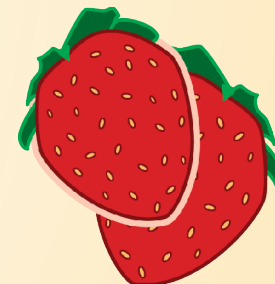
STRAWBERRY FESTIVAL

June 23rd and 24th from 11-4 PM

Pick-your-own strawberries*, hayrides, pony rides (11:30-3:30),
face painting, barnyard animals, music and more.

Live music with Daisy Nell
& Capt. Stan and Crabgrass
Saturday 12:30 - 3:30
and Old Cold Tater
Sunday 12:30 - 3:30

Cooking demos,
Fresh strawberry shortcake,
Farm fresh goodies, wine tasting,
and more!



143 Argilla Rd., Ipswich, MA 01938 • 978.356.5366 • www.russellorchards.com

*Visit our website for more info and picking conditions

Destination Ipswich calendar of events

ONGOING

IPSWICH PUBLIC LIBRARY: "Libraries Rock!" summer reading program, through Friday, July 13. Readers from kindergarten to grade six are tasked with recording their time spent reading or having books read to them. Completed forms must be submitted to the library's Children's Room by Friday, Aug. 10. Those who finish will receive a prize packet to the Topsfield Fair, which includes a free admission ticket, coupon for a hot dog and a cold drink, and ride tickets. The first 300 registrants will receive complementary book bags. **Mother Goose on the Loose**, Tuesday and Friday mornings at 10 a.m. Story time group for ages 2 and under and their caregivers. **Wednesday Morning Story Times**, 10 a.m., for preschoolers, kindergartners, and their caregivers. **Drop-In Crafts**, Thursdays, 10 a.m. to noon. Projects will be based on the library's summer reading program, "Libraries Rock!" Children 8 and under must be accompanied by an adult caregiver at each group. 25 North Main St. 978-356-6648, visit www.ipswichlibrary.org.

CASTLE HILL TOURS. Tuesday through Sunday, 10 a.m. to 4 p.m. **A Cupola with a View**, tour that ends on the roof of the Great House. **Help Wanted: Becoming a Servant at Castle Hill**, first-person costumed tour. **Highlights on the Hill: Castle Hill Estate Tour**, seven-passenger electric golf cart tour. **The Cat's Meow**, children's tour held on Fridays and Saturdays for ages 3-7. \$20 per person for each tour. **The Guest of the Cranes**, led by actors in character of domestic servants from 1929. \$15 per person. Tours are first-come, first-served and operate on preset schedules. Self-guided tours of the first floor are also available. Admission discounts on all tours available for The Trustees of Reservations members. 290 Argilla Road. 978-356-4351, ext. 3203, www.thetrustees.org/castlehill.

CASTLE HILL CONCERT PICNIC SERIES. Thursdays, July 5 through Aug. 30. Gates open at 5 p.m. Guests may bring their own food (no alcoholic drinks) or purchase meals from Kelly's Roast Beef Catering, O's Nuts, and Wild Farms Homemade Ice Cream and Jules' Kitchen. Beverages will also be available from Mill River Winery, Ipswich Ale Brewery and Far from the Tree Cider. The schedule is



KEN YUSZKUS/Staff photo

Sau-Lok Ma reads in a quiet area at the Ipswich Public Library last year. The library will host several events this summer for kids of all ages.

as follows: **Jambalaya Horns**, July 5, New Orleans street jazz; **Entrain**, July 12, rock/funk jam band; **The Great Escape**, July 19, Journey tribute band; **Disco Dream**, July 26, disco; **Soul City**, Aug. 2, Motown soul and funk; **Soul Rebel Project**, Aug. 9, reggae; **Beantown Swing Orchestra**, Aug. 16, big band swing with accompanying laser show (group swing dance lesson at 6 p.m.); **HELP!**, Aug. 23, Beatles tribute band; **Orville Giddings Band**, Aug. 30, boogie blues. \$30 per car; \$8 for bicycles, motorcycles, and walk-ins. Admission discounts on all events available for The Trustees of Reservations members. 290 Argilla Road. 978-356-4351, www.thetrustees.org/castlehill.

'TUNNELTELLER': The Trustees of Reservations' Art & the Landscape, a public art initiative. Contemporary interpretation of Castle Hill's former hedge maze designed by Alicja Kwade. 290 Argilla Road. 978-356-4351, www.thetrustees.org/castlehill.

APPLETON FARMS: Preschool Farm Explorers, Wednesdays, through June 27, 9:30 to 10:30 a.m. Young children and their caregivers may enjoy farm activities, stories, and crafts each week. Preregistration is required. \$75 per person. **Wagon Rides**, Saturdays and Sundays, 11:30

a.m., 12:30 p.m., and 1:30 p.m. Each 25-minute ride will travel through the farm's vegetable fields and pasture. Stops will be made at the barnyard for a meet-and-greet with the farm animals. Preregistration is required. \$4 per person. **Meet a Dairy Farmer**, Sundays, beginning July 1, 5 to 6 p.m. Attendees will see the farm's cow-milking operation and learn how milk is used to make cheese. A picnic in the stone paddock will follow. Free admission. **Friday Farm Dinner**, Fridays, except July 13 and Aug. 3, 5:30 to 8:30 p.m. Local eateries will prepare a full feast with fresh ingredients found on the farm. \$45 for adults; \$15 for children. **Wee Farmers**, Tuesdays and Thursdays, beginning July 10, 9 to 11 a.m. Children ages 3-5 may explore the farm, meet animals, and preview Appleton's Farm Camp program. \$25 for parent/child pairs. Admission discounts on all events available for The Trustees of Reservations members. 219 County Road. Register at 978-356-5728 or www.thetrustees.org/appletonfarms.

IPSWICH MUSEUM: Whipple Wednesdays, every Wednesday in July and August, 10 a.m. to noon, at the Whipple House. Children's drop-in program with hands-on activities and Colonial games. \$5 suggested donation. **"To My Dear and Loving**

Husband," Saturdays, June 23, July 14, 28, Aug. 11, 25; 6 to 8 p.m. Play by Ann Bradstreet. Performed by four actors from History Alive in Salem. \$24 per person; \$12 for museum members and students. 53 South Main St. 978-356-2811, www.ipswichmuseum.org

FRIDAY, JUNE 22

Ipswich Junior Sailing Open House, 2 to 4 p.m., Ipswich Bay Yacht Club, Quay Road. Test sail an Opti or 420 sailboat on Ipswich Bay. Open to ages 8-16. Wear swimsuits, closed-toed shoes, life jackets. \$20 per person; may be applied to tuition for an IJS summer sailing program. www.ipswichjuniorsailing.org.

"Focusing on Photographs by Ipswich Artists" opening reception, 5:30 to 7:30 p.m., Ipswich Museum, 54 South Main St. 978-356-2811, www.ipswichmuseum.org.

SATURDAY, JUNE 23

Castle Neck River Boat Tours, 9 to 10:30 a.m., and 11 a.m. to 12:30 p.m., Castle Hill on the Crane Estate, 290 Argilla Road. See the back side of Crane Wildlife Refuge and Choate Island while aboard the pontoon boat Osprey. \$24 The Trustees of Reservations members; \$30 nonmembers. Register at 978-356-4351 or www.thetrustees.org/castlehill.

Along The Way Coffeehouse, 7 to 9 p.m., Ipswich Meeting House, 12 Meeting House Green. The Essex River Rounders Band performs folk, pop, blues, ragtime, and jug band music. \$10 person. Tickets available at the door or www.brownpapertickets.com. Call Amy or Ernie at 987-223-3597.

Hay Bale Hangout, 10 a.m. to 2 p.m., Appleton Farms, 219 County Road. Each group features a rotating schedule of half-hour farm activities. Open to children of all ages. Admission \$5 per day, at the door. 978-356-5728, www.thetrustees.org.

SUNDAY, JUNE 24

Castle Neck River Boat Tours, 9 to 10:30 a.m., and 11 a.m. to 12:30 p.m., Castle Hill, 290 Argilla Road. See the back side of Crane Wildlife Refuge and Choate Island while aboard the pontoon boat Osprey. \$24 The Trustees of Reservations members; \$30 nonmembers. Register at 978-356-4351 or www.thetrustees.org/castlehill.

MONDAY, JUNE 25

Summer Reading Program Kick-Off Party, 6:30 p.m., 25 North Main St. Outdoor concert featuring Steel Drum Band from Zach Field Drum Studios. Bring blankets and lawn chairs. In case of rain, program will be held at Ipswich Town Hall, 25 Green St.

WEDNESDAY, JUNE 27

Cocktails at the Castle: Caribbean Cocktails, 6 to 8 p.m., Castle Hill on the Crane Estate, 290 Argilla Road. Featuring live Caribbean music, tours, summer activities, and specialty cocktails. \$28 The Trustees of Reservations members; \$35 nonmembers. Register at 978-356-4351 or www.thetrustees.org.

Appleton Cooks! Sweet and Strawberries, 6 to 9 p.m., Appleton Farms, 219 County Road. Harvest and sample strawberries in the field before heading to a hands-on cooking class featuring professional chef instruction and all things strawberry. Event concludes with a celebration dinner. BYOB and wine allowed. \$72 TTOR members; \$90 nonmembers. Register at 978-356-5728 or www.thetrustees.org/appletonfarms.

THURSDAY, JUNE 28

Full Moon and Folklore Hike, 8:15 to 10:15 p.m., Castle Hill, 290 Argilla Road. Enjoy a night hike along the sand dunes at the Crane Wildlife Refuge. Hike is approximately 3 miles

long. For ages 13 and up. \$9 The Trustees of Reservations members; \$15 nonmembers. Register at 978-356-4351 or www.thetrustees.org/castlehill.

WEDNESDAY, JULY 4

Independence Day Parade, 9:15 a.m., Winthrop School, Ipswich Town Hall, 65 Central St. Decoration of bikes and wagons on front lawn at 9:15 a.m. Parade starts at 10 a.m., travels to High Street, Water Street, ending at Ipswich Town Hall with ceremonies and family-friendly activities. 978-356-6600, www.ipswichma.gov.

SUNDAY, JULY 8

Notch Traveling Biergarten, noon to 6 p.m., Castle Hill, 290 Argilla Road. Family-friendly activities, food, refreshments, and entertainment. Beer available from North Brewery. Free admission. 978-356-5728, www.thetrustees.org/appletonfarms.

WEDNESDAY, JULY 11

Music for the Little Ones with Eric Clemenzi, 10:30 a.m., Ipswich Public Library, 25 North Main St. Story time for ages 2 and under and their adult caregivers. 978-356-6648, www.ipswichlibrary.org.

FRIDAY, JULY 13

Notch Traveling Biergarten, 4 to 9 p.m., Appleton Farms, 219 County Road. Family-friendly activities, food, refreshments, and entertainment. Beer available from North Brewery. Free admission. 978-356-5728, www.thetrustees.org/appletonfarms.

SATURDAY, JULY 14

Notch Traveling Biergarten, noon to 7 p.m., Appleton Farms, 219 County Road. Family-friendly activities, food, refreshments, and entertainment. Beer available from North Brewery. Free admission. 978-356-5728, www.thetrustees.org/appletonfarms.

Greek Festival, 1 to 11 p.m., Hellenic Center, 117 County Road. Day one of two-day festival. Greek and American music and dancing with five-piece band Enosis; family and children entertainment; roasted lamb, Greek specialties, shish-kabob, Greek salads, homemade Greek pastries; raffles. \$5 admission (valid for both days); free for children under 10. www.greekfestivalipswich.weebly.com.

STEAM for Early Learners, 4 p.m. and 6 p.m., Ipswich Public Library, 25 North Main St. 4 p.m. session for

kindergartners and first-graders led by Doyon Kindergarten teachers Dee Dee Bates and Cheryl Hill. 6 p.m. session for ages 4-5 led by Winthrop Integrated Preschool teacher Tina Gove. 978-356-6648, www.ipswichlibrary.org.

Along The Way Coffeehouse, 7 to 9 p.m., Ipswich Meeting House, 12 Meeting House Green. Open mike night. Acoustic performers are welcome to sign up and perform live. \$5 person. Tickets available at door or www.brownpapertickets.com. Call Amy or Ernie at 987-223-3597.

SUNDAY, JULY 15

Greek Festival, 1 p.m. to dusk, Hellenic Center, 117 County Road. Day two of two-day festival. Greek and American music and dancing with five-piece band Enosis; family and children entertainment; roasted lamb, Greek specialties, shish-ka-bob, Greek salads, homemade Greek pastries; raffles. \$5 admission (valid for both days); free for children under 10. www.greekfestivalipswich.weebly.com.

FRIDAY, JULY 20

North Shore Swing Dance, 7 p.m., Ipswich Town Hall, 25 Green St. Free beginners course on East Coast swing dancing and Lindy hop from 7 to 8 p.m.; Cape Ann Big Band performs live from 8 to 11 p.m. Free for Ipswich residents with ID; \$18 nonresidents; \$10



Staff file photo

Throughout the summer, Appleton Farms will offer multiple family-friendly programs where guests can get up close to the farm's resident livestock.

for students with ID. www.facebook.com/northshoreswingdancegroup.

SATURDAY, JULY 21

First Period Heritage Program and Tour, 10 a.m. to 3 p.m., Ipswich

Public Library, 25 North Main St. Presentation and tour of Ipswich's First Period architecture. Walking tours cover North Main and High Street, the East End, and the Whipple House. Lunch included. \$25 per

person; limited to 40 people. Register at www.historicipswich.org/first-period-heritage-tour.

SUNDAY, JULY 22

Meet the Machines and Summer

Picnic, 4 to 7 p.m., Appleton Farms, 219 County Road. Get up-close with backhoes, manure spreaders and tractors. Bring lunch for picnic and music at the stone paddock. \$24 The Trustees of Reservations members;

\$30 nonmembers. Register at 978-356-5728 or www.thetrustees.org/appletonfarms.

MONDAY, JULY 23

STEAM for Early Learners, 10 a.m., Ipswich Public Library, 25 North Main St. Led by Ascension Preschool teacher Kelly Wing. For ages 4 to 5. 978-356-6648, www.ipswichlibrary.org.

Author discussion, 6:15 to 7:30 p.m., Ipswich Public Library, 25 North Main St. Shane Burcaw, author of children's picture book, "Not so Different: What You Really Want to Ask About Having a Disability," discusses his work via Skype. 978-356-6648, www.ipswichlibrary.org.

TUESDAY, JULY 24

STEAM for Early Learners, 6:30 p.m., Ipswich Public Library, 25 North Main St. Led by Cuvilly Arts School Coordinator Kate Dwyer. For ages 3 to 6. 978-356-6648, www.ipswichlibrary.org.

WEDNESDAY, JULY 25

Hike for Beer, 5:30 to 7 p.m., meet at parking lot off Highland Street. Two-mile hike through the farm's Grass Rides. Beer at Pigeon Hill to follow. Admission includes one drink ticket and snacks. \$12 The Trustees of Reservations members; \$20 nonmembers. Register at 978-356-5728 or

Casual Furniture Outlet

79 Turnpike Rd., Route 1, Ipswich, MA • 978-312-6257 • www.casualfurnitureoutlet.com



Hours: Mon-Wed 10-5; Thurs 10-7; Fri 10-5; Sat 9-5; Sun 11-4

THE GREAT ESCAPE

SUMMER SIZZLER SALE!!!



LARGEST DISPLAY OF GAS FIRE PITS FROM \$499

PIZZA OVENS



ADIRONDACK Chairs On Sale!

COMPLETE LINE OF PRESIDENTIAL POOL TABLES



HOT TUBS



SUMMER SIZZLER SALE!
FREE MARKET UMBRELLA!

*WITH THE PURCHASE OF ANY PATIO SET

PATIO FURNITURE AVAILABLE FOR IMMEDIATE FREE DELIVERY!

www.thetrustees.org/appletonfarms.
STEAM for Early Learners, 6 p.m., Ipswich Public Library, 25 North Main St. Led by Winthrop Kindergarten teacher Kerry Zagarella. For ages 4 to 6. 978-356-6648, www.ipswichlibrary.org.

Cocktails at the Castle: Castle Birthday Bash, 6 to 8 p.m., Castle Hill, 290 Argilla Road. Featuring live music, tours, summer activities, birthday cake, and specialty cocktails. \$28 The Trustees of Reservations members; \$35 nonmembers. Register at 978-356-4351 or www.thetrustees.org.

THURSDAY, JULY 26

Appleton Cooks!: Pastry Making, 5:30 to 7 p.m., meet at parking lot off Highland Street. Led by chef Elizabeth Walkowicz. Event concludes with a celebration taste-test. BYOB and wine allowed. \$60 The Trustees of Reservations members; \$75 nonmembers. Register at 978-356-5728 or www.thetrustees.org/appletonfarms.

FRIDAY, JULY 27

Olde Ipswich Days, 10 a.m. to 5 p.m., South Village Green. More than 60 artisans and fine craftsmen will show and sell their work, including paintings, watercolors, woodworking, glass, pottery, jewelry, children's toys, fabric crafts, hand-knits, folk art, photography, pen and ink prints, carved gourds, decorated furniture. 978-356-6600, www.ipswichma.gov.

Vehicle Day, 6:15 to 7:30 p.m., Ascension Memorial Church, 31 County St. Presented by The Trustees of Reservations and the Friends of the Ipswich Public Library. Explore rescue and construction vehicles. Free hot dog picnic featured. Open to all ages. 978-356-6648, www.ipswichlibrary.org.

SATURDAY, JULY 28

Olde Ipswich Days, 10 a.m. to 5 p.m., South Village Green. More than 60 artisans and fine craftsmen will show and sell their work, including paintings, watercolors, woodworking, glass, pottery, jewelry, children's toys, fabric crafts, hand-knits, folk art, photography, pen and ink prints, carved gourds, decorated furniture. 978-356-6600, www.ipswichma.gov.

SUNDAY, JULY 29

Olde Ipswich Days, 10 a.m. to 4 p.m., South Village Green. More than 60 artisans and fine craftsmen will show and sell their work, including paintings, watercolors, woodworking, glass, pottery, jewelry, children's toys, fabric crafts, hand-knits, folk art, photography, pen and ink prints, carved gourds, decorated furniture. 978-356-6600, www.ipswichma.gov.

MONDAY, JULY 30

STEAM for Early Learners, 10



Courtesy photo

Castle Hill on the Crane Estate in Ipswich will host its annual Summer Picnic Concert series every Thursday through Aug. 30. Visitors are encouraged to bring blankets, lawn chairs and picnic dinners, or buy food from one of the vendors.

a.m., Ipswich Public Library, 25 North Main St. Led by former Birth to 3 Director Dana Allen. For ages 3 to 6. 978-356-6648, www.ipswichlibrary.org.

WEDNESDAY, AUG. 1

Music for the Little Ones with Eric Clemenzi, 10:30 a.m., Ipswich Public Library, 25 North Main St. Story time for ages 2 and under and their adult caregivers. 978-356-6648, www.ipswichlibrary.org.

SATURDAY, AUG. 4

Roaring '20s Lawn Party, 3 to 8 p.m., Castle Hill, 290 Argilla Road. Day one of the two-day family-friendly party. Swing dance lessons, antique automobiles, house tours, and lawn games. Live musical performances by Boston Lindy Bomb Squad, The Riff, Boston Lindy Hop, Eight Thirty ACT. Jazz-age attire is encouraged. \$32 (\$52 for two-day pass) The Trustees of Reservations members, students and seniors; \$40 (\$70 for two-day

pass) nonmembers; free for children 10 and under. \$10 parking passes. Register at www.thetrustees.org/castlehill.

20th Anniversary Celebration, 4 to 7 p.m., Appleton Farms, 219 County Road. Celebrating 20 years with The Trustees of Reservations. Beer and cheese tasting, food trucks, silent auction, live folk music, contra dancing lessons. Ages 21 and older. \$36 TTOR members; \$45 nonmembers. Register at www.thetrustees.org/appleton.

Along The Way Coffeehouse, 7 to 9 p.m., Ipswich Meeting House, 12 Meeting House Green. The Sea Dogs present "An Evening of Sea Music." A cappella shanties and instrumented fo'c'sle songs performed. Audience participation encouraged. \$10 person. Tickets available at the door or www.brownpapertickets.com. Call Amy or Ernie at 987-223-3597.

SUNDAY, AUG. 5

Roaring '20s Lawn Party, 3 to

8 p.m., Castle Hill, 290 Argilla Road. Day two of two-day family-friendly party. Swing dance lessons, antique automobiles, house tours, and lawn games. Live musical performances by Boston Lindy Bomb Squad, The Riff, Boston Lindy Hop, Eight Thirty ACT. Jazz-age attire is encouraged \$32 (\$52 for two-day pass) The Trustees of Reservations members, students and seniors; \$40 (\$70 for two-day pass) nonmembers; free for children 10 and under. \$10 parking passes. Register at www.thetrustees.org/castlehill.

SATURDAY, AUG. 11

Castle Neck River Boat Tours, 10:30 a.m. to noon, and 1 to 2:30 p.m., Castle Hill, 290 Argilla Road. See the back side of Crane Wildlife Refuge and Choate Island while aboard the pontoon boat Osprey. \$24 The Trustees of Reservations members; \$30 nonmembers. Register at 978-356-4351 or www.thetrustees.org/castlehill.

Manchester Summer Chamber

Music: Reunited, 7:30 p.m., Castle Hill, 290 Argilla Road. MSCM's 10th anniversary season begins with a performance of Arvo Pärt's "Spiegel" and Bach's Double Violin Concerto. \$25 The Trustees of Reservations and Friends of MSCM members; \$35 nonmembers; free for children 12 and under. Register at www.thetrustees.org/castlehill.

SUNDAY, AUG. 12

Appleton Cooks!: Earth Oven Bread, 5:30 to 7 p.m., meet at parking lot off Highland Street. Chef Elizabeth Walkowicz teaches attendees how to make bread from scratch. Event concludes with a celebration taste-test. BYOB and wine allowed. \$60 The Trustees of Reservations members; \$75 nonmembers. Register at 978-356-5728 or www.thetrustees.org/appletonfarms.

WEDNESDAY, AUG. 15

Picnic Supper on the Roof, 7 to

8:30 p.m., Castle Hill, 290 Argilla Road. Held on the Great House's roof. Full meals prepared by Ferreira Foods. \$40 The Trustees of Reservations members; \$50 nonmembers. Register at www.thetrustees.org/castlehill.

FRIDAY, AUG. 17

North Shore Swing Dance, 7 p.m., Ipswich Town Hall, 25 Green St. Free beginners course on East Coast swing dancing and Lindy hop from 7 to 8 p.m.; Compaq Big Band performs live from 8 to 11 p.m. Free for Ipswich residents with ID; \$18 nonresidents; \$10 for students with ID. www.facebook.com/northshoreswingdancegroup.

SATURDAY, AUG. 18

STEAM for Early Learners, 10 a.m., Ipswich Moving Company, 2 Cogswell St. Presented by Ipswich Public Library. Led by Jenny Carlson. For ages 5 to 8. 978-356-6648, www.ipswichlibrary.org.

First Period Heritage Program and Tour, 10 a.m. to 3 p.m., Ipswich



48th Annual
Olde Ipswich Days
ART & CRAFT FAIR

July 27th & 28th / 10 - 5pm • July 29th / 10 - 4pm

★ Over 55 Exhibitors ★

Food • Entertainment • Free Parking • South Green, Ipswich • Rtes. 1A & 133



ANNTIQUES

ECLECTIC CURATED EMPORIUM | OVER 8,000 SQ FT SHOP

47 SOUTH MAIN STREET, RTE 1A IPSWICH, MA & 2 REAR MARTIN STREET, ESSEX, MA



WWW.MYANNTIQUES.COM

DISCOVER SOMETHING SPECIAL

VINTAGE, MID-CENTURY, ANTIQUE FURNISHINGS, FINE, COSTUME, AND TRIBAL JEWELRY.

(978) 502-5594

FREE PARKING IN ELM STREET LOT AND STREET + [FACEBOOK.COM/ANNTIQUES1](https://www.facebook.com/ANNTIQUES1)



Public Library, 25 North Main St. Presentation and tour of Ipswich's First Period architecture. Walking tours cover North Main and High Street, the East End, and the Whipple House. Lunch included. \$25 per person; limited to 40 people. Register at www.historicipswich.org/first-period-heritage-tour.

Manchester Summer Chamber Music: All About That Bass, 7:30 p.m., Castle Hill, 290 Argilla Road. Bassist joins MSCM to perform works by Dvorak, Haydn, and Piazzolla. \$25 The Trustees of Reservations and Friends of MSCM members; \$35 nonmembers; free for children 12 and under. Register at www.thetrustees.org/castlehill.

SUNDAY, AUG. 19

Notch Traveling Biergarten, noon to 6 p.m., Castle Hill, 290 Argilla Road. Family-friendly activities, food, refreshments, and entertainment. Beer available from North Brewery. Free admission. 978-356-4351, www.thetrustees.org/castlehill.

TUESDAY, AUG. 21

Magician Peter Jackson, 1:30 p.m., Ipswich Town Hall gym, 25 Green St. Presented by Ipswich Public Library. Ice cream social to follow at Ipswich Council on Aging cafeteria. 978-356-6648, www.ipswichlibrary.org.

WEDNESDAY, AUG. 22

Hike for Beer, 5:30 to 7 p.m., meet at parking lot off Highland Street. Two-mile hike through the farm's Grass Rides. Beer at Pigeon Hill to follow. Admission includes one drink ticket and snacks. \$12 The Trustees of Reservations members; \$20 nonmembers. Register at 978-356-5728 or www.thetrustees.org/appletonfarms.

Davis Bates and Roger Tincknell concert, 6:30 p.m., Ipswich Council on Aging cafeteria, 25 Green St. Family-friendly music and stories. Presented by Ipswich Public Library. 978-356-6648, www.ipswichlibrary.org.

SATURDAY, AUG. 25

Castle Neck River Boat Tours, 10:30 a.m. to noon, and 1 to 2:30 p.m., Castle Hill, 290 Argilla Road. See the back side of Crane Wildlife Refuge and Choate Island while aboard the pontoon boat Osprey. \$24 The Trustees of Reservations members; \$30 nonmembers. Register at 978-356-4351 or www.thetrustees.org/castlehill.

Manchester Summer Chamber Music: Sounds of Summer, 7:30 p.m., Castle Hill, 290 Argilla Road. Program includes string music by Mendelssohn and Mozart. \$25 The Trustees of Reservations and Friends of MSCM



Roaring Twenties Lawn Party, 8/3/14

Courtesy photo

Castle Hill's Roaring '20s Lawn Party, featuring authentic music and attire, will be held Saturday and Sunday, Aug. 4 and 5, at the Crane Estate.

members; \$35 nonmembers; free for children 12 and under. Register at www.thetrustees.org/castlehill.

WEDNESDAY, AUG. 29

Cocktails at the Castle: Speakeasy, 6 to 8 p.m., Castle Hill, 290 Argilla Road. Featuring live vintage jazz music, tours, summer activities, and specialty cocktails. \$28 The Trustees of Reservations members; \$35 nonmembers. Register at 978-356-4351 or www.thetrustees.org.

SATURDAY, SEPT. 1

From Cultures to Rinds: Cheese-Making Fundamentals, 9:30 to 11:30 a.m., Appleton Farms, 219 County

Road. Make homemade cheese and tour Appleton's dairy operations. Led by cheese-maker Kristian Holbrook. \$60 The Trustees of Reservations members; \$75 nonmembers. Register at www.thetrustees.org/appleton.

Castle Neck River Boat Tours, 1 to 2:30 p.m., and 3:30 to 5 p.m., Castle Hill, 290 Argilla Road. See the back side of Crane Wildlife Refuge and Choate Island while aboard the pontoon boat Osprey. \$24 The Trustees of Reservations members; \$30 nonmembers. Register at 978-356-4351 or www.thetrustees.org/castlehill.

SUNDAY, SEPT. 2

Castle Neck River Boat Tours, 1 to 2:30 p.m., and 3:30 to 5 p.m., Castle Hill, 290 Argilla Road. See the back side of Crane Wildlife Refuge and Choate Island while aboard the pontoon boat Osprey. \$24 The Trustees of Reservations members; \$30 nonmembers. Register at 978-356-4351 or www.thetrustees.org/castlehill.

MONDAY, SEPT. 3

Labor Day at Castle Hill, 10 a.m. to 4 p.m., Castle Hill, 290 Argilla Road. Open for tours: Guest of the Cranes held each hour and Cupola with a

View at 11:30 a.m. and 1:30 p.m. Final tours at 3 p.m. Prices vary. Register at 978-356-4351 or www.thetrustees.org/castlehill.

SATURDAY, SEPT. 8

Choate Island Day, 10 a.m. to 3 p.m., Castle Hill, 290 Argilla Road. Tour includes Choate family homestead, Proctor Barn, White Cottage Visitor Center, Crane family gravesite. Boat transportation to island provided. \$20 adults; \$10 children/seniors; discounts available for The Trustees of Reservations members. Register at www.thetrustees.org/castlehill.

MONDAY, SEPT. 10

Brown Bag Lunch Discussion Series: Dreaming of Italy, 5:30 to 7:30 p.m., Ipswich Museum, 54 South Main St. Linda Dini Jenkins, author of "Up At The Villa: Travels with my Husband," discusses her travel experiences. Bring your own lunch. Free for museum members; \$5 per person. 978-356-2811, www.ipswichmuseum.org.

WEDNESDAY, SEPT. 12

Cocktails at the Castle: Applepalooza, 6 to 8 p.m., Castle Hill, 290 Argilla Road. Featuring live music, tours, summer activities, cider, and specialty cocktails. \$28 The Trustees of Reservations members; \$35 nonmembers. Register at 978-356-4351 or www.thetrustees.org.

FRIDAY, SEPT. 14

Along The Way Coffeehouse, 7 to 9 p.m., Ipswich Meeting House, 12 Meeting House Green. The Honkytonk Women Band perform pop music from the '50s and '60s. \$10 per person. Tickets available at door or www.brownpapertickets.com. Call Amy or Ernie at 987-223-3597.

WEDNESDAY, SEPT. 19

Ipswich and its Board of Selectmen, 5:30 to 7:30 p.m., Ipswich Museum, 54 South Main St. Jim Engel, former Selectmen and Ipswich Water Commissioner, discusses Ipswich's municipal position. Bring your own lunch. Free for museum members; \$10 per person. 978-356-2811, www.ipswichmuseum.org.

FRIDAY, SEPT. 21

North Shore Swing Dance, 7 p.m., Ipswich Town Hall, 25 Green St. Free beginners course on East Coast swing dancing and Lindy hop from 7 to 8 p.m.; The Wolverine Jazz Band performs live from 8 to 11 p.m. Free for Ipswich residents with ID; \$18 for nonresidents; \$10 for students with ID. www.facebook.com/northshoreswingdancegroup.

Country Dance, 7:30 to 9:30 p.m., Castle Hill, 290 Argilla Road. With

live music by country rock band The Herland Brothers. \$20 adults; \$10 children/seniors; discounts available for The Trustees of Reservations members. Register at www.thetrustees.org/castlehill.

SATURDAY, SEPT. 22

Skeletons in the Basement, 10:30 to 11:30 a.m., Castle Hill, 290 Argilla Road. Behind-the-scenes tour on the Crane Estate's inner contraptions and gadgets. \$15 The Trustees of Reservations members; \$25 nonmembers. Register at 978-356-4351 or www.thetrustees.org/castlehill.

Castle Neck River Boat Tours, 1 to 2:30 p.m., and 3:30 to 5 p.m., Castle Hill, 290 Argilla Road. See the back side of Crane Wildlife Refuge and Choate Island while aboard the pontoon boat Osprey. \$24 The Trustees of Reservations members; \$30 nonmembers. Register at 978-356-4351 or www.thetrustees.org/castlehill.

SUNDAY, SEPT. 23

Down on the Farm Fall Concert Series, 4 to 7 p.m., Appleton Farms, 219 County Road. Live music. Bring food or purchase meals from vendors. Beverages by Ipswich Ale and Old Planters Brewing. Lawn games and farm animals. Dogs not allowed. \$20 per car for The Trustees of Reservations members; \$30 nonmembers. www.thetrustees.org/appleton.

WEDNESDAY, SEPT. 26

Hike for Beer, 5 to 6:30 p.m., meet at parking lot off Highland Street. Two-mile hike through the farm's Grass Rides. Beer at Pigeon Hill to follow. Admission includes one drink ticket and snacks. \$12 The Trustees of Reservations members; \$20 nonmembers. Register at 978-356-5728 or www.thetrustees.org/appletonfarms.

THURSDAY, SEPT. 27

Johnson Lecture Series, 6:30 to 9 p.m., Ipswich Public Library, 25 North Main St. Author Alexandra Fuller discuss her previously published memoirs and the release of her first novel, "Quiet Until the Thaw." Book sales and cash bar begin at 6:30 p.m.; presentation at 7:30 p.m. Register at 978-356-6648 or www.ipswichlibrary.org.

FRIDAY, SEPT. 28

Live Action Clue for Adults, 7 to 9:30 p.m., Castle Hill, 290 Argilla Road. Murder-mystery party set in the late 1920s. Played in teams of 6-8. Beer, wine, and light appetizers served. For ages 18 and up. \$36 The Trustees of Reservations members; \$45 nonmembers. Register at 978-356-4351 or www.thetrustees.org/castlehill.



IPSWICH CLAMBAKE

Innovative picnics...Stellar events

CATERING

978-356-2050

*to create the perfect menu
for your gathering.*

RESTAURANT

978-356-7201

Open 7 day per week

*Mon-Thurs 11am-7pm | Fri & Sat 11am-8pm
Sun 11am-7pm*

Free Cup of Chowder

with

Purchase of full priced Entrée at Restaurant



Ipswich Clambake

Visit us on Facebook

196 High Street | Rte. 1A | Ipswich, MA | 978-356-7201

FIRST Ipswich BANK



BUSINESS MONEY MARKET SPECIAL

1.55% APY*

**BUSINESS ONLY
GUARANTEED THRU
YEAR END 2018**

888-667-3697
www.firstipswich.com

DANVERS | ESSEX | GLOUCESTER | IPSWICH | NEWBURYPORT | ROWLEY

*This offer is limited to one business account per entity and is available at any First Ipswich Bank location. This is for new accounts with a required minimum balance to open the account of \$2,500 in new funds from another financial institution. The required minimum balance to receive the promotional APY is \$10,000. Accounts with a balance of \$1,000,000 and over or a balance less than \$10,000 will earn a lower APY on the entire account balance. Offer is valid as of 6/21/18 and can be withdrawn at any time. The promotional Annual Percentage Yield (APY) is guaranteed thru 12-31-18, after which the APY will become variable and subject to change without notice. Accounts closed in less than 90 days are subject to a \$25 early closing fee. Fees may reduce earnings. This offer cannot be combined with other offers. Other terms, conditions and restrictions may apply. For more information please speak with a First Ipswich Bank representative. Member FDIC. Equal Housing Lender. 