

# Salce Park Renovation - Community Outreach Update

12/4/2025

CREATED BY: SALCE PARK SUPPORTERS TEAM



# Presentation Overview

## **Background**

- Park Location
- History

## **LWCF Grant Opportunity**

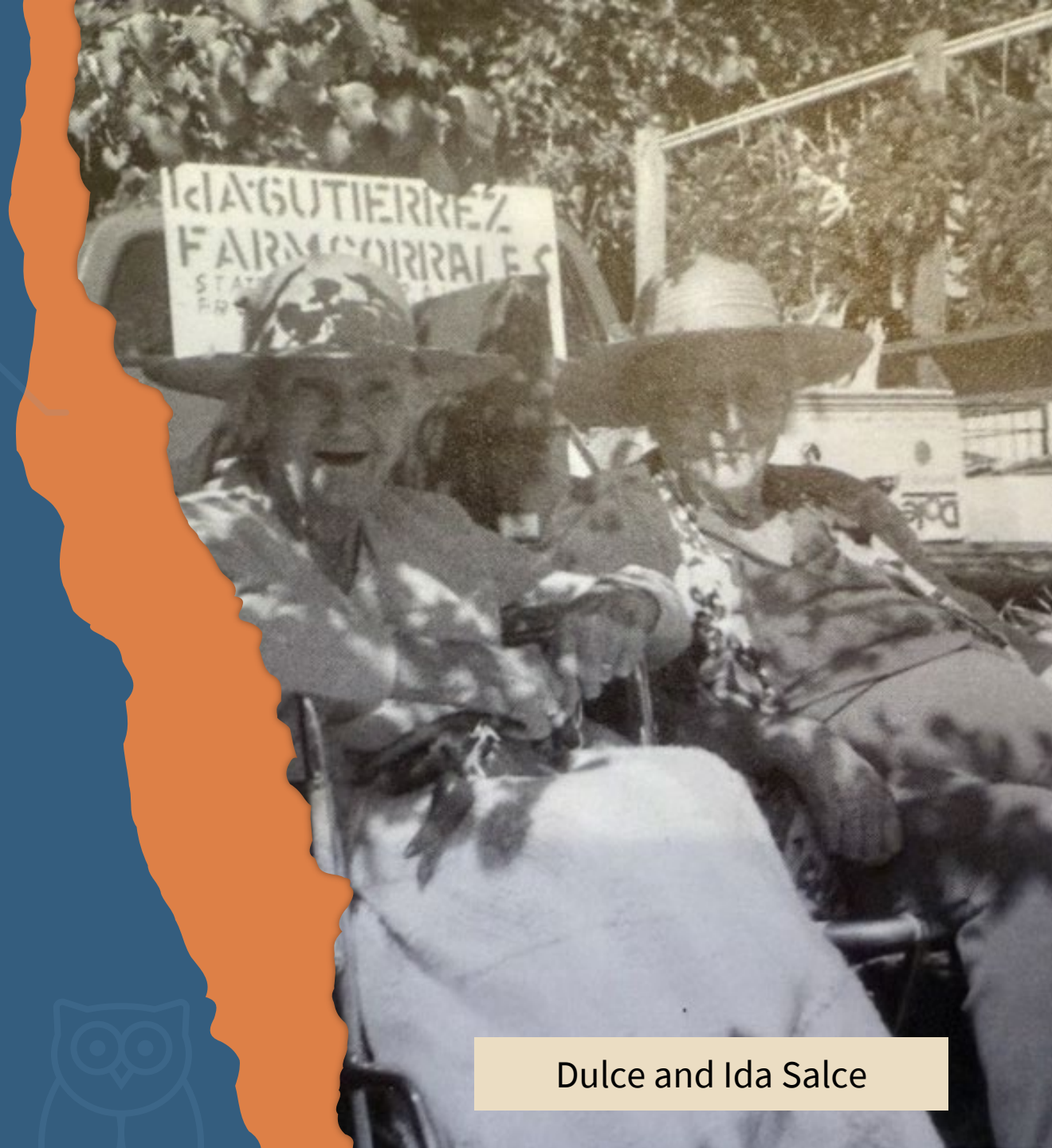
- Community Outreach
- Results

## **Next Steps**





# Background



Dulce and Ida Salce



# Park Location



# Salce Park History

## 1880s

Angelo Salce purchases a tract of land ranging from the Rio Grande to the Rio Puerco, including what is today Salce Park.

## 1980s

Angelo Salce's descendants work with a developer to create Sagebrush Subdivision.

As a provision to the development, the family donated Salce Park to the Village **expressly to be used as a park.**

## 1990s

Salce Park is established as a soccer field.

This caused a lot of traffic and noise to the neighborhood.

Later in the 90's the fields flooded and **fell into disrepair.**

## Now

Salce Park is essentially an abandoned lot and dumping grounds.

Speculation emerged that the Village was considering selling Salce Park, and this sparked a community petition to renovate the park, with the family stating it should be returned if not used as intended.

The Village **secured LWCF Grant funding** to improve the park.



# The Salce Family



**Angelo & Maria**

**Angelo Salce** was an Italian immigrant who settled initially in Albuquerque as a shoemaker. His brother, **Luigi**, joined shortly after. In the late 1880s, he moved to Corrales and took up farming. In the early 1900s, his future bride, **Maria**, arrived from Italy to join him. They had five children who survived to adulthood.



**Dulcelina Salce Curtis**  
(1904-1995)



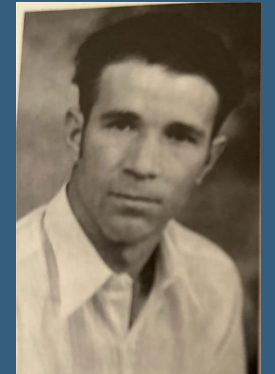
**Ida Salce Gutierrez**  
(1907-1993)



**Lena Salce Apodaca**  
(1911-2010)



**Virgilio Salce**  
(1913-2002)



**Arthur Salce**  
(1915-1943)

**The 3<sup>rd</sup> – 6<sup>th</sup> generations of the Salce Family are still active in the Village today, going by various other last names.**



# LWCF Grant Opportunity & Community Outreach



7



Dulcelina Salce Curtis

# LWCF Grant & Park Development

- The Village has been awarded a Land and Water Conservation Fund (LWCF) Grant to begin improving Salce Park.
- **Phase 1** Funding will be used for:
  - Developing new plan for the park based on community input
  - The grant cannot be used solely for design and planning; therefore, the walking path will also be installed.
- The Village will seek additional grant funding in support of **Phase 2** which will add the additional amenities based on the community-driven design.



# Community Outreach Survey

- A Community Outreach Survey was created and then went live on 10/24/25
- The Salce Park Supporters Team shared this link broadly with Salce family, park neighbors, and the community at large, even attending the annual Halloween Festival at Corrales Elementary.
  - **Thank you to Corrales Elementary PTA for your support!**
- The survey closed on 11/14/25 with **170 responses!!!**

# Question 1

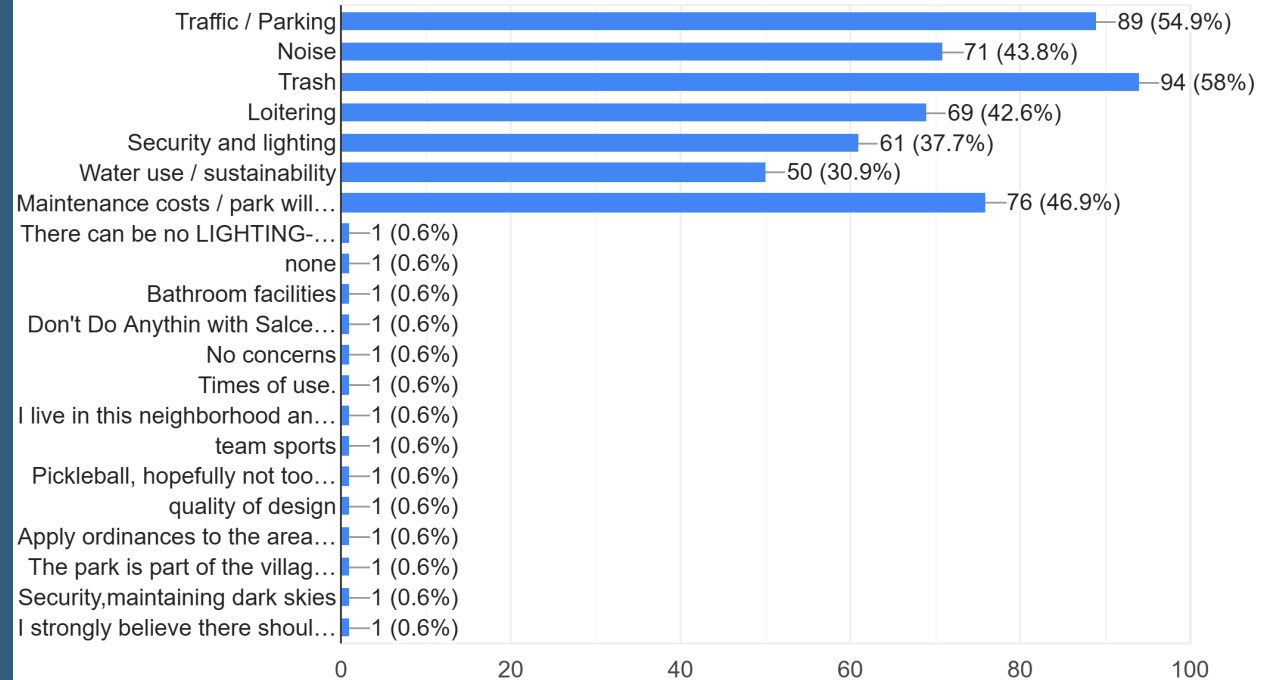
If this is/were your neighborhood, which of the following would be your greatest concerns?

## Top 5 Answers:

1. Trash (58%)
2. Traffic/Parking (55%)
3. Maintenance (47%)
4. Noise (44%)
5. Loitering (43%)

If this is/were your neighborhood, which of the following would be your greatest concerns? (Select up to 5)

162 responses



## Question 2

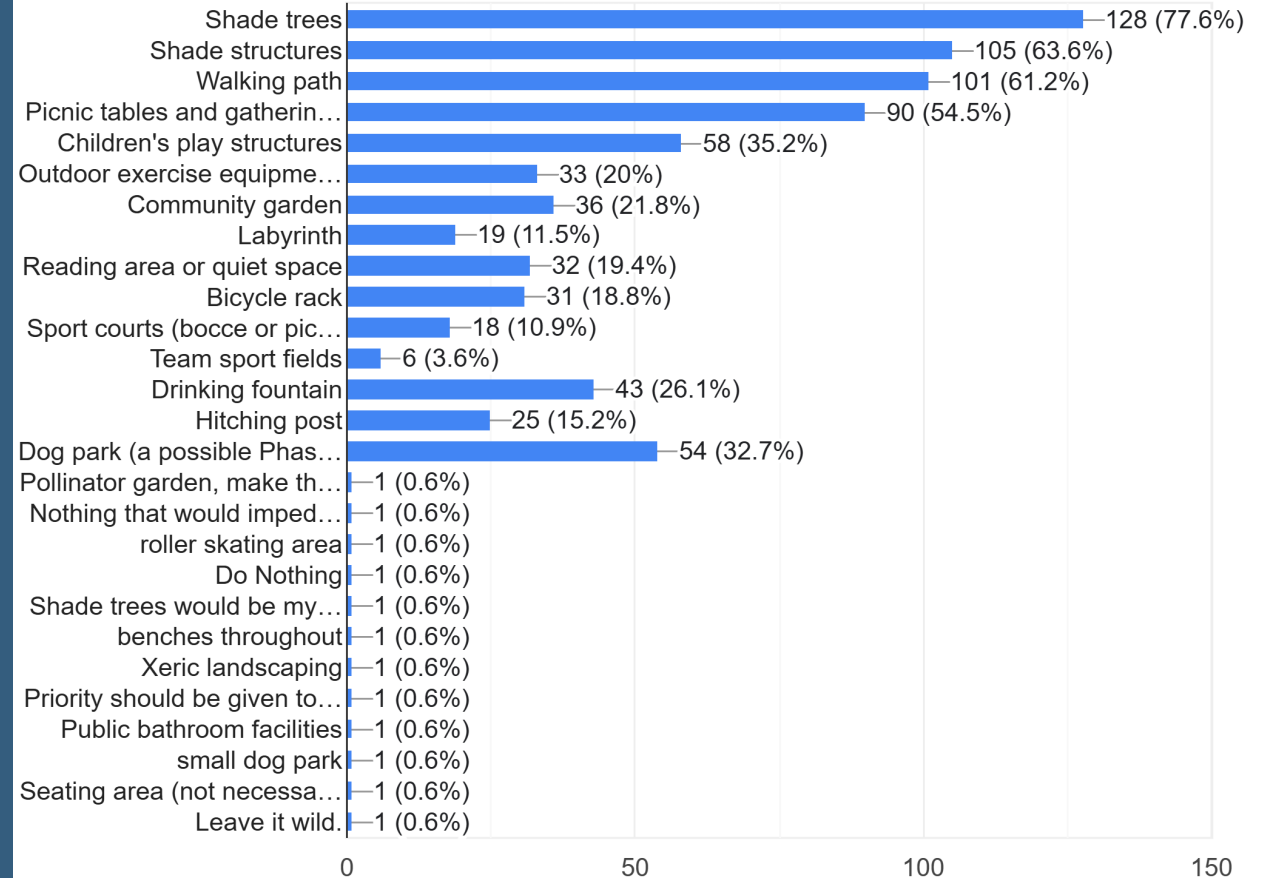
What features would you most like to see included in Salce Park?

### Top 5 Answers

1. **Shade Trees (78%)**
2. **Shade Structures (64%)**
3. **Walking Path (61%)**
4. **Picnic Tables & Gathering Areas (55%)**
5. **Children's Play Structure (35%)**

What features would you most like to see included in Salce Park? (Select up to 5)

165 responses





# Question 3

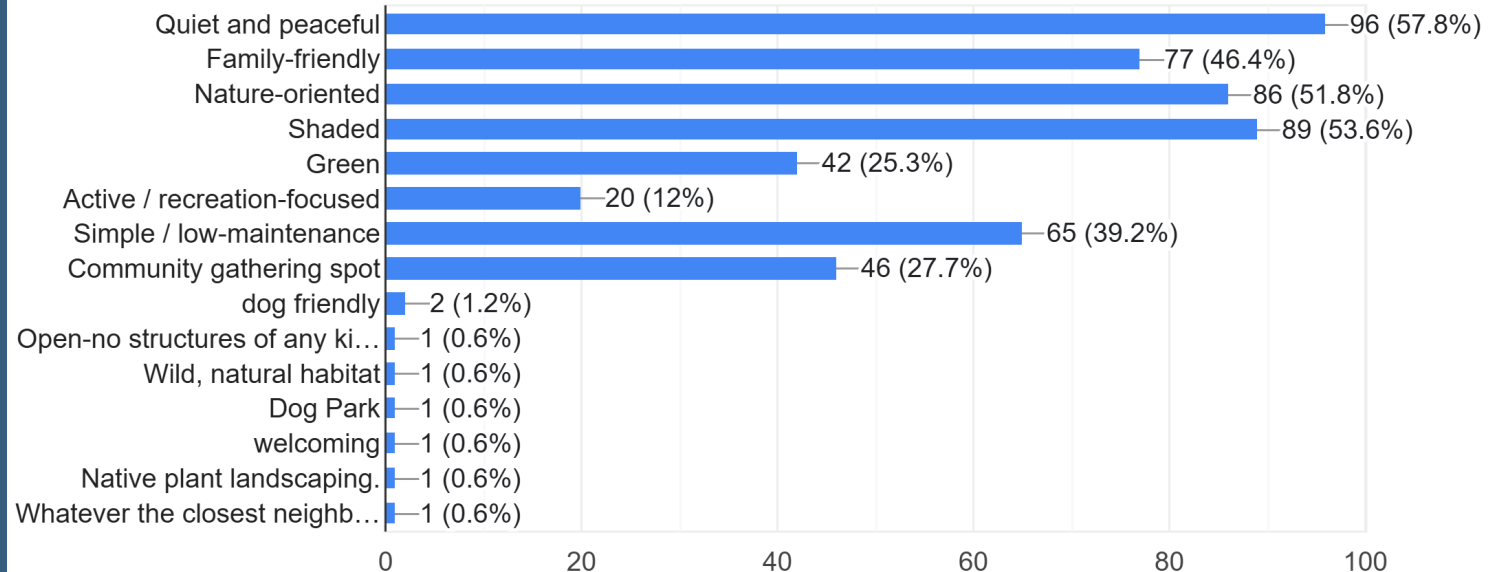
When complete, how would you like to be able to describe the park?

## Top 5 Answers:

1. **Quiet/Peaceful (58%)**
2. **Shaded (54%)**
3. **Nature-Oriented (52%)**
4. **Family-Friendly (46%)**
5. **Simple/Low-maintenance (40%)**

When complete, how would you like to be able to describe the park?

166 responses



## Question 4

**What one feature would make Salce Park unique for Corrales residents?**

**Results with at least 5 mentions.**

1. **Dog park and off-leash area** (15 mentions) – Phase 2 North
2. **Shade trees, green oasis feel** (10 mentions)
3. **Quiet peaceful park atmosphere** (10 mentions)
4. **Horse-friendly, equestrian accommodations** (8 mentions)
5. **Neighborhood gathering community space** (7 mentions)
6. **Walking paths and loop trails** (6 mentions)
7. **Art, sculpture, mural features** (6 mentions)
8. **Benches and seating areas** (5 mentions)
9. **Kids and family play features** (5 mentions)

## Question 5

### How far do you live from Salce Park?

**Over 65% of respondents live within 1 mile of the park.**

**Over 90% live in Corrales.**

How far do you live from Salce Park? If unsure, select "Other" and provide nearest roadway intersection (Ex: Valverde and Corrales).

166 responses





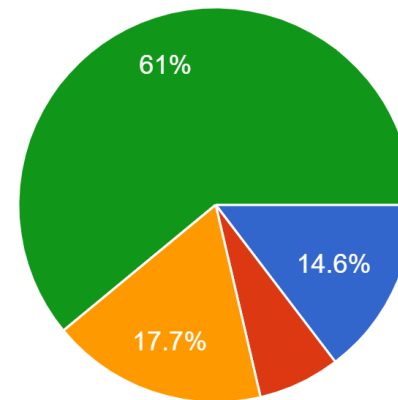
# Question 6

## Household Demographics

**Nearly 70% of respondents are in adult only households.**

Household Demographics

164 responses



- Family with Young (ages 0-12) Children
- Family with Older (ages 12-18) Children
- Adult Only (ages 19-64) household
- Older Adult Only (ages 65+) household

## Question 7 – Final Comments and Concerns

1. Desire for a quiet, peaceful neighborhood park—no large sports complexes or noisy events.
2. Strong interest in community gathering spaces for socializing, reading, or small group activities.
3. Safe play areas for children and families, including shaded playground equipment.
4. Dedicated walking paths and loop trails for all ages.
5. Dog-friendly areas, with some favoring a dog park and others preferring leash-only dog walking.
6. Requests for shaded areas and landscaping with native plants or trees.
7. Need for adequate safety measures: lighting concerns, traffic control, protection from vandalism, and law enforcement presence.
8. Suggestions for seating such as benches and picnic tables.
9. Calls for minimal maintenance needs, with trash cans and regular repairs noted.
10. Interest in water features, drainage improvements, or ponds—balanced with water conservation concerns.
11. Equestrian accommodations and access, supporting Corrales's horse culture.
12. Desire for features that support community events and neighbor connections while limiting disruptive noise.
13. Importance of honoring the Salce family's donation and history.
14. Accessibility for nearby residents—preference for walking rather than increased car traffic.
15. Some requests for sports features (courts, fields), but many want to avoid attracting non-local event crowds.

# Survey Synopsis

The community desires Salce Park to be a **peaceful, low-maintenance**, and nature-oriented neighborhood space that provides **shade, walking paths, gathering spots**, and opportunities for quiet enjoyment and connection.

Residents overwhelmingly wish for a park that **balances the needs of families with children, older adults, and dog owners**, without fundamentally changing the character of the quiet surrounding neighborhood.







# Next Steps



Virgilio Salce

# Last Vote of Support Before December Council Meeting

The Salce Park Supporters Team would like to ask you to participate in one last vote of support of this project.

Please go to this link or scan the QR Code for a simple Yes/No Survey

<https://forms.gle/LF6eCjrJdrYdjNrc8>



# And after that?

1. Results of outreach to be shared with the Council.
2. Professional consultants (landscape architects and civil engineers) will be hired to develop detailed designs and construction documents.
3. Updated construction cost estimates will be provided at each design stage.
4. Public feedback will be invited on park designs before final decisions.
5. Construction will be publicly bid to ensure transparency and value.
6. Final costs and specific improvements will be determined after the design and bidding process.

**Breaking Ground Target for Walking Path: Fall 2026**

**Submit for Phase 2 Grant: December 2026**





# Thank you

## SALCE PARK SUPPORTERS TEAM

PAMINA DEUTSCH

BILL PERKINS

LIZ STALEY

JOE TIGHE

TARA TRAFTON

SALCEPARKCOMMENTS@GMAIL.COM

