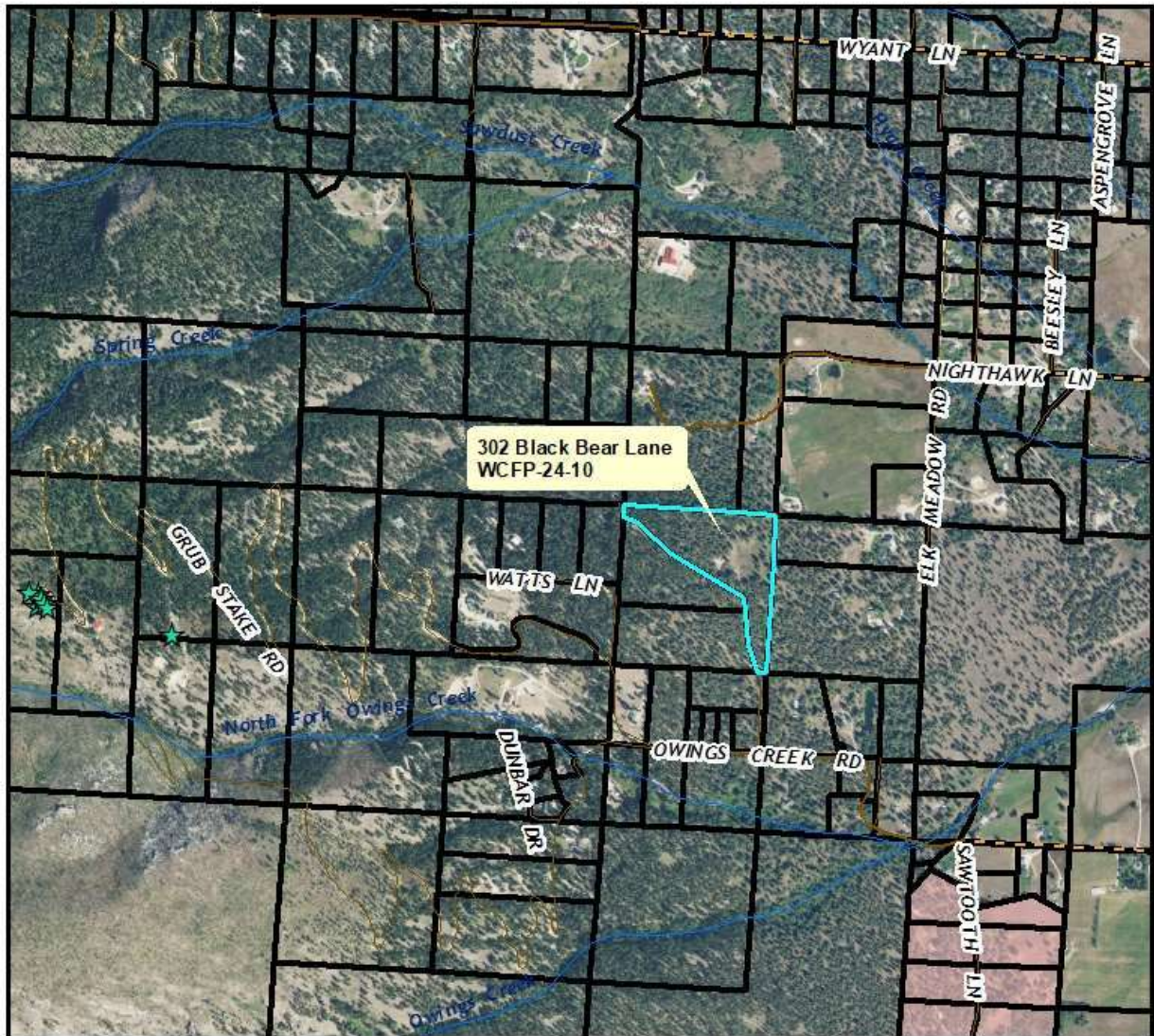




Ravalli County Planning Department
215 S. 4th Street, Suite F
Hamilton, MT 59840
Phone 406-375-6530
planning@rc.mt.gov

WCFP-24-10 Wireless Communication Facility Location



0 750 1,500 3,000 Feet



Date: 3/17/2025

Maps by RML

- Cell Towers
- No Link Found
- Linked with Black Mtn
- Zoning

Ravalli Co. provides this map for informational purposes only, it is not suitable for legal, engineering, or surveying purposes. The FEMA Floodplain shown on this map is not accurate and does not represent the regulatory FEMA floodplain boundary. This map cannot be used to determine drainfield setbacks as they need to be certified by a licensed surveyor or engineer. Please contact the Ravalli County Floodplain Administrator with questions regarding the FEMA Floodplain (406-375-6530).

Vicinity Map
(Source Data: Ravalli County GIS Department)