



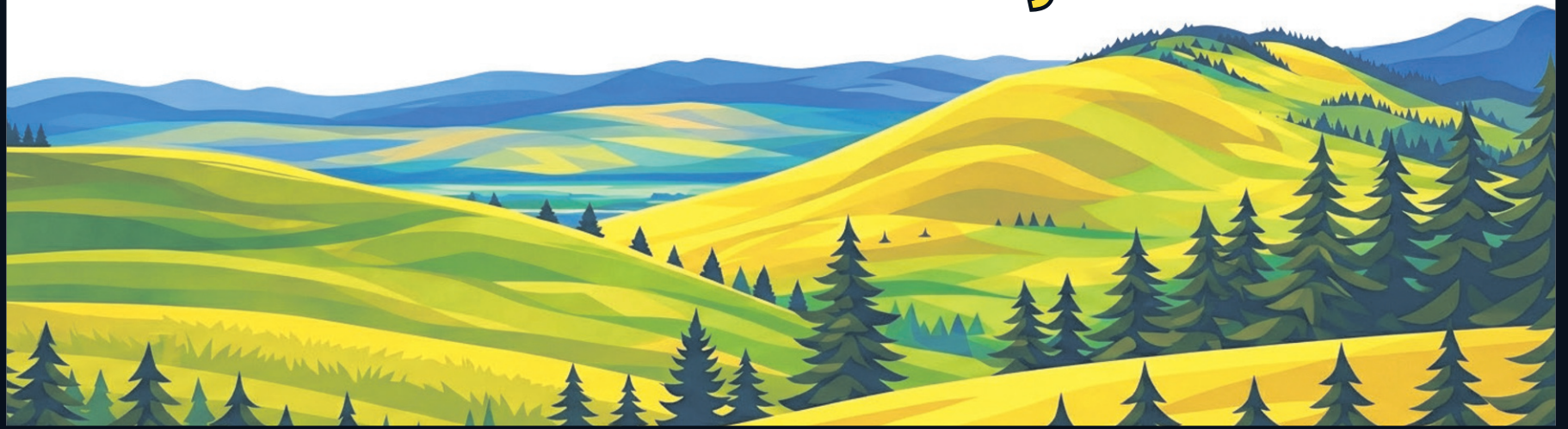
GIVING GUIDE

FOR OUR COMMUNITY GIVING DAY

MISSOULAGIVES

&
Bitterroot Gives

APRIL 30 - MAY 1, 2026



SUPPORT 200+ LOCAL NONPROFITS



DONATE AT

**MISSOULAGIVES.ORG
& BITTERROOTGIVES.ORG**

PRESENTED BY:



Missoula
Community
Foundation



Missoula
Community
Foundation

Letter from the Executive Director

Dear Friends and Community Partners,

Welcome to Missoula & Bitterroot Gives 2026! On April 30th and May 1st, our community will once again come together to celebrate generosity in all its forms - supporting local nonprofits and strengthening the place we are proud to call home.

At its heart, this event is about participation. Everyone can play a role in building a stronger, more connected community. Whether you have \$5 to give or \$5000, whether you volunteer your time, donate blood, help a neighbor, or simply encourage others to be giving - your contribution matters. Each act of generosity helps shape the spirit of this place.

Every year, we hear from donors about what inspires them to take part, and their words offer a meaningful window into what this event represents.

"I like seeing all of the work being done by nonprofits and finding new organizations to support."

Missoula & Bitterroot Gives is a chance to discover the breadth of work happening across our community - much of which often goes unseen. From arts and education to basic needs and environmental stewardship, this event shines a light on the organizations making a difference and invites each of us to connect with causes that resonate.

"I can't give a lot, so the giving day helps me to spread it around and support the things I care about."

Giving doesn't have to be large to be meaningful. One of the strengths of this event is that it creates space for everyone to participate. Many small gifts, thoughtfully given, come together to create a powerful collective impact. Generosity is not defined by size, but by intention.



"I like being an active part of a giving community."

That sense of shared purpose is what makes these two days so special. There is something powerful about knowing you are part of a larger movement - neighbors, friends, businesses, and organizations all coming together to support one another and our place.

So much of what makes Missoula and the Bitterroot special exists because someone had a vision - a passion, an idea, and the generosity to act on it. This event honors that legacy and invites each of us to be part of it.

I invite you to explore this guide, discover the causes that matter to you, and find your own way to participate. Give what you can, share the message, and encourage others to join you. Generosity is contagious, especially when it is based in community.

Together, through many small and meaningful actions, we create a unique and thriving community for everyone to enjoy.

Marcy Allen
Executive Director
Missoula Community Foundation

Welcome to the 12th Annual Missoula & Bitterroot Gives

What is Missoula & Bitterroot Gives?

Missoula & Bitterroot Gives is our community giving day - an online fundraiser that brings people together across the Missoula and Bitterroot valleys to support the nonprofits that **make our community stronger**.

Our goal is for local organizations to collectively raise \$1.5 M this year.

This event is powered by people choosing to show up. Last year, more than 4,600 people made a donation during the giving day - each one adding to the momentum and tally. **This year, we're aiming for 5,000 donors!** Whether you give \$5 or \$5000, your participation helps reach this amazing milestone and contributes to the enormous collective impact of the day.

When is Missoula & Bitterroot Gives?

MissoulaGives.org is open now for donations, but the giving day celebration - when the bulk of donations are made, is 26 hours long:

Thursday, April 30th at 5:00 PM to Friday, May 1st at 7:00 PM.

How do I give?

Visit MissoulaGives.org. Each participating nonprofit has a page on this website. If you know the organization you want to support, you can search for them by name. Or, you can search for a cause you care about - such as the environment, hunger, the arts, etc. Through MissoulaGives.org you can explore more than 200 organizations doing vital work in our community.

Inside this guide is a budget worksheet that allows you to plan for the day.

Why give now?

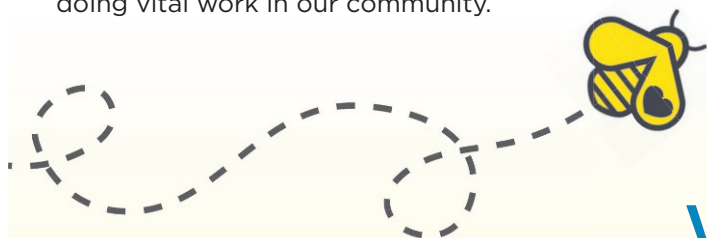
This is a critical time for nonprofit organizations. With growing uncertainty around federal funding and increasing strain on **local resources**, many nonprofits are facing unprecedented challenges. At the same time, they are working to meet the needs of a growing population. The unrestricted gifts that organizations receive during Missoula & Bitterroot Gives help sustain and expand their essential work, and allow them to stay focused on their mission.

Can I participate without making a gift?

You can take part in Missoula & Bitterroot Gives with a donation of just \$5. But there are other ways to participate as well:


- **Spread the word:** Tell friends, neighbors and colleagues about the event. Your outreach helps grow the giving community.
- **Volunteer:** Contact a participating nonprofit and ask how you can help! Or reach out to us - we can plug you into our outreach efforts: info@missoulacommunityfoundation.org.
- **Come to our events that celebrate giving and community connection:**
 - **Bitterroot Kickoff** - April 29th 5-8 at Bitter Root Brewery
 - **Children's Giving Hour** - April 30th 11:30-12:30 at Missoula Public Library
 - **Kickoff Celebration** - April 30th 5-8 at Plonk
 - **Missoula Gives Blood Drive** - May 1st 12-5 at Peak Blue Mountain
 - **Finale Celebration** - May 1st 5-8 at Cranky Sam
 - **Polly Photo Days** - May 25, 28 & 29

Whether you give, gather, volunteer, or share, you're helping build something meaningful.



WAYS TO GIVE

ONLINE	<p>Donate online at MissoulaGives.org</p> <p>Online donations can be made by credit card, mobile pay, or ACH. If you need assistance, click on the online Blue Chat Bubble.</p>	DEADLINE: May 1
CHECK	<p>Send your check to the participating nonprofit.</p> <p>All checks must be received by May 1st at 4pm.</p>	DEADLINE: May 1
STOCK, DAF, & IRA <small>(QCD)</small>	<p>For gifts to one nonprofit, contact the participating nonprofit or for gifts to multiple nonprofits, contact Missoula Community Foundation.</p> <p>Call or Email : 406-926-2846 or info@missoulacommunityfoundation.org.</p>	DEADLINE: April 29



Scan Me

Questions? Visit MissoulaGives.org/info/WaysToGive

About the Missoula Community Foundation

The spirit of Missoula is defined by the way its people show up for one another, creating a culture of generosity that manifests in endless ways. The Missoula Community Foundation helps facilitate and encourage this generosity, creating pathways for all givers.

Central to our work is helping individuals and families design personal, flexible and impactful estate gifts and charitable funds.

Here are just a few examples of how you might partner with us:

- A family may create a donor-advised fund to support organizations that have touched their lives, inviting children or grandchildren into the process and passing along the values behind their giving.
- A couple may set up a deferred pass-through fund to allocate a portion of their estate to their favorite local nonprofits when they pass.
- An individual may establish a nonprofit endowment to ensure that an organization they care deeply about continues to serve the community going forward.

The funds we manage are creating impact today – **this past year we gave out \$1.7M in collaboration with donors.** And we look to Missoula's future, working with families and individuals to establish plans for their charitable giving in their will or trust that will give back to the community for generations.

Generosity is most powerful when it reaches the right place at the right time. By listening, learning, and partnering with nonprofits and local leaders, **we help connect resources to Missoula's most urgent and emerging needs**, as well as help establish funds that can ensure our community has the resources to support future needs.

Thriving nonprofits are the backbone of our community, and we invest time and resources in the organizations doing the day-to-day work that keeps Missoula strong and resilient. This work includes:

- Missoula & Bitterroot Gives, bringing thousands of people together to support local nonprofits
- Nonprofit Impact Initiative, new this year, soon providing capacity building grants, education, back end service and programs to the region's nonprofits.
- Be The Change Education Series, helping donors and nonprofits learn, connect, and make a bigger impact.
- Missoula Nonprofit Directory, connecting donors with an up-to-date listing of local nonprofits and their mission based work.

Join us – come and learn more about how you can contribute to a strong ecosystem of giving in our community and help cultivate a Missoula where everyone has the opportunity to belong, succeed, and contribute.

Reach out today to arrange a quick, 30-minute conversation to explore your giving options. We offer consultations with you and/or your professional advisors at no cost. Call us at 406.926.2846 or email info@missoulacommunityfoundation.org.



MISSOULAGIVES



Good For Missoula

By opening a fund with us, you support our greater work in the community to grow planned giving and support the needs of Missoula.



Localized Expertise

Missoula Community Foundation can provide expertise to help match your passions and giving to create real impact in the community.



Convenient

By opening a fund with us we take away all the burden of tracking multiple donations and we take care of ALL the administration.



Donor Education

Whether you want to learn more about a certain issue in our community or more about recent tax law changes, we have you covered.



Unique Gifts

Knowing that most wealth is held in non-cash assets we are able to accept unique gifts - real estate, life insurance policies, farm assets. We can also help you leave unique gifts to nonprofits.

Participating Organizations

If you love Western Montana and are looking for a way to give back, we invite you to take part in our community giving day, **Missoula & Bitterroot Gives!**

The nonprofit organizations in our region shape our community and give it purpose. They feed, house, educate, entertain, and inspire us. They advocate for our neighbors and protect our landscapes - the list is long and impressive, and you can see the full scope of their impact within these pages.

Our giving day presents a unique opportunity to come together and give easily and generously. The contributions made through Missoula & Bitterroot Gives are **unrestricted donations**, which are vital to the life-changing work carried out every day by our nonprofit sector.

Scan Me



Missoula & Bitterroot Gives is managed by the Missoula Community Foundation and supported by a host of community partners. But we cannot do this without you - **you power this day**. Thank you for taking the time to learn about our nonprofit community and for joining us in this collective effort to lift it up.

M

Missoula

B

Bitterroot



IS YOUR CURRENT DIAGNOSIS: GALA ADVERSE ?

I'M WEARING
PAJAMAS
BY 7:30

PADDLE CALLS
TRIGGER MY
ANXIETY

4:00 WALLOW IN SELF-PITY
4:30 STARE INTO THE ABYSS
5:00 SOLVE WORLD HUNGER...
TELL NO ONE
5:30 JAZZERCISE
6:30 DINNER WITH ME
(I CAN'T MISS THAT AGAIN)
7:30 WRESTLE WITH
MY SELF-LOATHING...
I'M BOOKED !

I WANT TO MAKE
A DIFFERENCE,
BUT NOT ON A
SATURDAY NIGHT

I HAVEN'T
HAD FUN
SINCE 2019

BABYSITTERS
ARE IMPOSSIBLE
TO FIND



the alternative ...
**Bitterroot
Gives** ☀️

As an ENCORE to our 26-hour online giving campaign, we'll live-stream the giving website at our GALA

SATURDAY, MAY 2
5:30-9:00 pm

So, set an alarm, give a gift online while wearing your pajamas, and we'll cheer for your generosity at our event.



Bitterroot
Performing
Arts Council

SPRING FOR THE ARTS 2026

WWW.BITTERROOTPERFORMINGARTS.ORG

ANIMAL WELFARE

1 Horse at a Time Draft Horse Rescue Inc. B M

At 1H@AT, we rescue unwanted, neglected, and abused draft horses, preventing them from entering slaughter or auctions. We accept owner surrenders, educate owners, and visit senior homes to bring joy to the elderly.

Animal Wonders Inc. M

Animal Wonders and team members dedicate themselves to adopting displaced wildlife and other animals in need, giving them a life-long home, and providing education to our community about exotic and native animals.

AniMeals M

AniMeals is Missoula's feline shelter and food bank for community cats and companion animals. Each year, we provide shelter and adoption services for 450 cats, with a focus on felines with manageable medical conditions.

Bitter Root Humane Association B M

We provide caring, compassionate shelter to homeless & stray animals. We assist our community & their pets by offering affordable public spay/neuter & ID/microchip clinics, as well as a free pet food pantry.

Footloose Montana B M

Founded in 2007, Footloose Montana pioneered the idea of trap-free public lands for people, pets and wildlife. We are fighting to end the cruelty of recreational trapping and other assaults on wildlife through science and advocacy.

Heidi's Kitten Rescue B M

Heidi's mission is to give a second chance to as many cats and kittens as possible. We take in surrendered or abandoned cats, especially kittens, fix and vaccinate them and give needed medical care, and find them forever homes.



Humane Society of Western Montana M

The Humane Society of Western Montana builds opportunities for pets and people to thrive. We offer a wide range of services for low/no-cost vet care, adoptions, behavior, education, advocacy and more.

Missoula AdvoCats M

Missoula Advocats improves the lives of community cats through humane solutions, including TNR, fostering, spay/neuter support, and education. We prioritize compassion and collaboration—get involved by volunteering, fostering, or donating.

Montana Pittie Project, Inc. M

We rescue bully breeds from death row, care for them and find them homes, and engage the hearts and minds of our community to bring about an end to the needless killing of abandoned and abused bully breeds.

River Pines Horse Sanctuary B M

Our mission is to provide a safe home for horses in need. Our horses give back to the community through activities fostering connection and resilience for youths and adults in challenging circumstances.

Wings Programs Equine Rescue & Sanctuary **B**

Wings Programs rescues neglected, abandoned and owner-relinquished equines in the Bitterroot Valley and nearby areas. Our equines receive medical care and training to be adoptable, and some are sanctuary animals that will remain at Wings for life.

ARTS & CULTURE

A Quantum Dream **M**

AQD brings contemporary science-fiction theatre to enrich our community and provides needed accessibility services for people with disabilities.

Alpine Artisans, Inc. **M**

Alpine Artisans produces the Norman Maclean Literary Festival in Missoula, returning to “Celebrate the Blackfoot: The Story of Montana’s Iconic River” October 2-4, 2026 at The Wilma and other sites.

Arts Missoula **M**

We are the local arts and culture agency. We connect art and culture through education, advocacy, and community. We’re a resource for coordination, development and support of art and culture for the Missoula community.

Bare Bait Dance & Westside Theater **M**

Bare Bait Dance with Westside Theater commits to nurturing the development, education, and presentation of the performing arts in Western Montana, particularly celebrating dance and all movement arts.

Big Sky Film Institute **M**

Our goal is to bring stories from around the world to our beautiful mountain town, support the people who create documentary film, create vibrant events that gather our engaged community, & expand knowledge & conversation around issues that matter.



Bitterroot Gives

Every 21 Seconds Someone
Sustains a Brain Injury. *Help Us Respond.*



You're the
Voice
of Help,
Hope, and
Healing.



Brain Injury Alliance
of Montana



www.biamt.org
406-541-6442

Give Today



Bitterroot Baroque, Inc. B

Bitterroot Baroque is a community orchestra that gives first rate early music concerts in Hamilton and provides music education via professional guest artists.

Bitterroot Dance Collective B

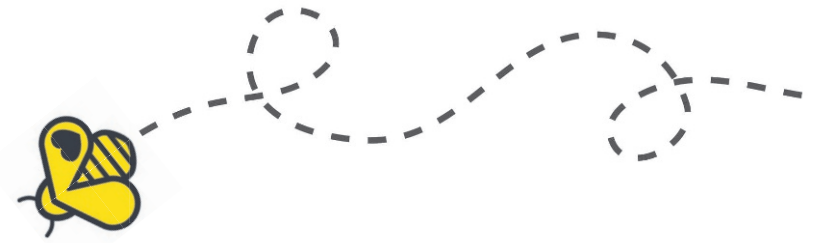
The Bitterroot Dance Collective supports dance productions, like the Nutcracker, as well as smaller outreach productions, local intensives, educational scholarships and other opportunities for dancers from any Bitterroot studio to audition or apply.

Bitterroot Performing Arts Council B

The Bitterroot Performing Arts Council brings world-class performing arts to the Bitterroot Valley, connecting community through inspiring, enlightening & entertaining performances & offering educational outreach for students & aspiring musicians.

Crescendo Club Missoula M

We help kids find their worth through music education. We widen access, resources, and opportunities for young people to thrive through creative expression.



Daly Mansion Preservation Trust B M

We are keeping State and Local history alive through managing, restoring and maintaining a State owned historic home and its grounds. The Daly Mansion and its grounds is a center for education, cultural and community activities.

Friends of Montana Shakespeare in the Parks B M

Friends of Montana Shakespeare in the Parks raises philanthropic support for Montana Shakespeare in the Parks to ensure free, professional theatre and educational programming reach rural and underserved communities.



missoula food bank
& community center



SUPPORT YOUR LOCAL FOOD BANK



Missoula kids are ready to learn, grow, and thrive.

During Missoula Gives, you can help create 8,500
hunger-free weekends, fueling their strength, potential,
and success. Kids EmPower Packs make it possible. Join us.

missoulafoodbank.org • 406-549-0543
1720 Wyoming Street, Missoula, MT 59801

Friends of the Historical Museum at Fort Missoula **M**

Friends of the Historical Museum is a nonprofit partner of the Historical Museum at Fort Missoula. Funds raised through Friends support preservation & education work. 100% of donations fund special projects like restoration, lectures & public tours.

Garden City Ballet **M**

The mission of Garden City Ballet is to preserve Missoula's Nutcracker for our children and community - since 1984!

Giving Art to Missoula (GAM) **B M**

A donation based free store for art, craft, music, and hobby supplies providing affordable low barrier entry options into the arts. We reduce waste with the value of creative reuse, welcoming all ages.

Hamilton Players, Inc. **B**

Hamilton Players is a 168-seat community theater whose mission is to enrich our community by inspiring and educating through the performing arts! We hope you'll come play with us soon!

Making Missoula **M**

We empower makers through education and grants because makers' financial autonomy, a robust handmade economy, and a community of entrepreneurs are key to maintaining the unique qualities of Missoula.

MissCast Productions **M**

We are a theatre company dedicated to telling diverse and inclusive stories. It is our aim to showcase artists of all sizes, genders, sexualities and races, and create a safe and welcoming space for our performers and audiences.

MISSOULAGIVES



Missoula Art Museum **M**

MAM, a FREE contemporary art museum, believes that art is for all-during all stages of life. For almost 50 years, MAM has been a place for shared experiences, community connection and providing free access to arts programming.

Missoula City Band **M**

We provide free concerts to the community of Missoula at the Bonner Park Band Shell each summer.

Missoula Community Chorus, Inc. **M**

We at Missoula Community Chorus offer Missoula a great opportunity to sing a variety of music from different cultures and genres that is beautiful and impactful.

Missoula Community Concert Band **M**

The Missoula Community Concert Band provides an opportunity for adult musicians to rehearse and perform in the Missoula Community. We offer two free concerts each year, one in the spring and one in the fall.

Missoula Community Radio - KFGM **M**

Missoula Community Radio creates a medium for all community members to enrich and engage their community directly and freely by producing educational, socially just, culturally aware, and entertaining radio programming.

Missoula Symphony Association **M**

Celebrating 70 years, the Missoula Symphony brings the joy of symphonic and choral music to Missoula through inspiring performances, education, and community outreach.

Missoula Writing Collaborative **B M**

Missoula Writing Collaborative partners with schools and communities across western Montana to teach the imaginative power of language. For the last 30 years, MWC has inspired students to explore, create, and share their stories.

Montana International Choral Festival **M**

Montana International Choral Festival brings choral music from across the world to Missoula. The biennial event produced by volunteers is supported by community donors who believe in the unifying power of diverse cultural voices.

Montana Repertory Theatre **M**

As the long established resident professional theatre at the University of Montana, Montana Repertory Theatre is known for its commitment to creativity, resourcefulness, innovation, and superior storytelling.

Montana Thespians **M**

Montana Thespians supports middle & high school students & teachers in theatre education statewide. Through festivals, leadership opportunities & resources, we help them succeed. We believe theatre has the power to inspire, connect & transform lives.



Supporting Persons with Disabilities in
Enhancing Their Quality of Life
www.orimt.org

MISSOULAGIVES
APRIL 30TH & MAY 1ST, 2026

SCAN HERE
TO SHOW
YOUR SUPPORT



OPPORTUNITY
RESOURCES, INC

Northern Rockies Heritage Center M

Northern Rockies Heritage Center's Mission is to preserve the integrity and heritage of Fort Missoula; to foster historic, cultural, and educational enrichment. Preservation of our entrusted buildings and grounds is vital to this mission.

Open AIR M

Open AIR supports creativity in Montana through education, collaboration, and place-based initiatives, such as our celebrated residency program and free public programming like workshops, exhibitions, presentations, and more.

Preserve Historic Missoula M

Preserve Historic Missoula is a nonprofit organization dedicated to saving and celebrating historic resources in Missoula and the surrounding area through heritage preservation and education.

Tell Us Something M

Tell Us Something uses live storytelling to inspire understanding, acceptance, & empathy within our community. Storytellers share true personal stories at each event. More info: tellussomething.org

The Clay Studio of Missoula M

The Clay Studio of Missoula is a nonprofit ceramic arts center, working to bring affordable and accessible clay education, and access to ceramic facilities to the Missoula community.

The Missoula Children's Theatre M

MCT empowers children and adults through theatre education and performance, building lifelong skills and enriching communities worldwide through live productions, both locally at Missoula Children's Theatre and through international touring programs.



Inspire the next generation of environmental leaders



EPI students will work alongside scientists to study ecosystems, build confidence, and become environmental leaders!

Support students
this Missoula Gives

ecologyproject.org



ECOLOGY PROJECT
INTERNATIONAL



The Roxy Theater M

The Roxy Theater seeks to make the world a better place through the power of cinema, education, and community. The Roxy operates seven days a week showing new releases, a monthly calendar of independent, foreign, & classic films.

Travelers' Rest Connection B M

Travelers' Rest Connection supports Travelers' Rest State Park through outreach, advocacy and educational experiences connecting the past to the future. Donations fund travel for field trips, honoraria for demonstrators, and more.

Tuesday at Twelve B

The Jean Matthews Tuesday at Twelve summer concert series offers free concerts each Tuesday at noon from June 11 to August 20, 2024, on the lawn of the Ravalli County Museum. Enjoy the music and Hamilton's beautiful downtown!

Wheels on the Bus: mobile ceramics studio M

Wheels on the Bus is a mobile ceramics studio that brings hands-on art to communities, breaking down barriers and fostering community, inclusivity, and creativity for all, regardless of location or resources.

ZDK Arts M

ZDK Arts provides a spotlight to Missoula area artists, musicians, & performers. Through theatre, pop-ups, collaborations, & more, ZDK offers arts experiences for both performer & audience alike.

Zootown Arts Community Center M

The Zootown Arts Community Center is Missoula's nonprofit local arts center, providing art experiences in a welcoming space in which all members of the community can create, collaborate, and thrive.

COMMUNITY ADVOCACY

Emmaus Campus Ministry M

Emmaus Campus Ministry is an open and affirming Christian community bridging the University of Montana and the broader Missoula area helping students, young adults and others find connection and collective passion in life.

Evaro Community Center M

A small Community Center that serves the community of Evaro. We need to pay our insurance, taxes, and utilities each year. We have no large donors or corporate sponsors.



Missoula Community Foundation B M

Missoula Community Foundation works with donors to grow the philanthropic pool for Missoula, managing funds to benefit local organizations and providing expertise, and resources that inspire local giving and strengthen nonprofits.

Missoula Downtown Foundation (MDF) M

The Missoula Downtown Foundation supports and promotes Missoula through the enhancement of Downtown through vibrancy of arts and culture, livability, economy, and safety.

Missoula Rotary Foundation M

A better Missoula, better Montana and world, through a vibrant Rotary legacy.

Hamilton Downtown Foundation B

The Hamilton Downtown Foundation supports programs and projects dedicated to the health and vitality of downtown Hamilton and Hamilton's small business community.

O'Hara Commons & Sustainability Center B

Increase equitable access to local food / Strengthen local food systems & economy / Develop food-based programs & partnerships / Offer year-round Farmers Market / Support local growers & food producers

Home ReSource B M

Home ReSource is our community sustainability center! We reduce waste and build a more vibrant, sustainable local economy through reuse, zero-waste events, workforce programs, education, and more.

Stretch Pool B M

XX

Wings Programs, Inc.
Non-profit Equine Rescue & Sanctuary

Bitterroot Gives

New location!
1127 Park Lane
Stevensville
wingsprograms.org

Donate to help us
Rebuild The Ranch

Helping equines and their owners in the Bitterroot Valley since 2014

Give today to celebrate 25 years of hands-on history programs at Travelers' Rest State Park. \$5,000 in donations matched by our partners!

www.travelersrest.org 406-273-4253
6717 Highway 12 West, Lolo



CELEBRATING
25 YEARS
IN 2026



The Clark Fork River Market M

The Clark Fork River Market brings Missoula together with local farmers, fresh food, music, and events—ensuring everyone has access to healthy, local food through support programs.

The LifeGuard Group B M

The LifeGuard Group provides rapid response, safe housing, direct services and long-term, trauma-informed care for survivors of human trafficking, guiding individuals from crisis to lasting restoration.

The Pulp M

At The Pulp, we're building a vital and vibrant independent news organization for Missoula. Help us produce smart and accessible local journalism that fosters dialogue and creates community.

Tip the Host - MCF B M

XX

United Way of Missoula County M

Solving our community's biggest challenges with creative, lasting solutions. With your help we change lives for the better.

DISABILITY SERVICES

Center for ASL Acquisition and Access M

The Center for ASL Acquisition and Access is a deaf-led nonprofit founded in 2025. Our mission is to develop and deliver language resources to the families of deaf children in rural areas, in order to prevent and remediate language deprivation.

Missoula Adaptive Recreation and Sports B M

We create adaptive, accessible recreation opportunities for individuals with disabilities in Missoula. We empower participants, promote inclusivity, and offer a range of activities so all can enjoy our community's amazing recreation opportunities.

Opportunity Resources, Inc M

Opportunity Resources Inc. is dedicated to empowering individuals with disabilities by providing opportunities for meaningful employment, artistic expression, stable housing, and promoting active community involvement.

Ravalli Services B

Ravalli Services Corporation is a nonprofit organization helping individuals with developmental and intellectual disabilities find inclusion and integration within their communities.

Summit Independent Living B M

Summit Independent Living provides referrals, classes, and advocacy so Montanans with disabilities can live independently in their homes and their communities.

The Arc Western Montana M

The Arc Western Montana provides people with developmental disabilities and their families with the skills, tools, and support that foster self-determination and inclusion, so they thrive as integrated members in their communities.

The ARK Foundation B M

We financially support families of children with rare, complex, or chronic medical needs. We provide assistance for medical needs that insurance doesn't typically cover as well as travel reimbursement.



Scan Me

EDUCATION

Bitterroot Discovery Children's Museum B

We are dedicated to serving children and their caregivers by providing unique hands-on exhibits, experiential programs, and inclusive community partnerships that stimulate curiosity and motivate learning.

Brightways Learning B M

Brightways Learning improves learning and achievement through collaborative engagement, caring connections, and innovative technology solutions.

Clark Fork Preparatory High School M

Clark Fork Prep is an independent high school that fosters intellectual curiosity and a commitment to community. At CFP, students experience the joy of learning in a supportive, place-based, and rigorous educational environment.



Give the gift of connection



No one should feel alone as they age.

Your gift helps older neighbors share meals, find support, and come together.



Darby Brilliant Beginnings B

Darby Brilliant Beginnings (DBB) is Montana's first Career Savings Account program. Partnering with BCFCU, DBB gives every Darby student an account for future success. Earn incentives through financial education and grow savings with matching funds!

Ecology Project International M

The EPI Yellowstone program offers immersive field courses lasting five to nine days for middle and high school students, engaging them in conservation service and research projects while fostering holistic personal growth.

Families First M

Families First strengthens families through education, connection, play, and partnership. We strive to create a community where families feel supported, empowered, and inspired to learn and play together.

Grizzly Orienteering B M

Grizzly Orienteering teaches navigation, map, and compass skills. Our programs and events provide opportunities for youth, families, and competitors to gain experience/confidence in Montana's forests.

Hawthorne Elementary PTA M

We are the PTA for Hawthorne Elementary, a local Title 1 School that is fundraising to repair and update our community playground.

Hellgate Elementary School District M

Hellgate Elementary School District, Montana's largest independent K-8 district, serves 1500 students in Missoula. Established in 1869, it fosters academic, emotional, and social growth in a welcoming environment.

Bitterroot Gives

HerUpland M

HerUpland is a nonprofit expanding access for women and youth to upland hunting, bird dog training, mentorship, and conservation education through hands-on camps, clinics, and community programs.

Leadership Montana B M

Leadership Montana: Building a better Montana through knowledge, collaboration, and civility. Offering leaders from all industries the tools to strengthen their leadership skills while fostering personal growth and reflection.

Lolo Watershed Group B M

The Lolo Watershed Group is a volunteer-led nonprofit working to restore and sustain the Lolo Watershed, balancing protection of water, fisheries, and habitat with the area's rural character, agricultural heritage, and open spaces.



30 YEARS

**DROP IN RECEPTION
FRIDAY, MAY 1
NOON-6PM**

Stop by and find out what's happening
this summer (and beyond!)

Help us meet our \$5,000
matching grant
challenge!

Every dollar donated is matched
1:1 up to a total of \$5,000!



www.missoulagives.org/organizations/hamilton-players-inc

Lowell School PTA M

The Lowell PTA is an organization of volunteers working together to enrich education, advocate for students' and staff needs, and build relationships with the Lowell community.

Missoula Butterfly House and Insectarium M

Inspiring an appreciation and understanding of insects and their relatives through unique exhibits and education programs in Montana's only tropical butterfly house and insect museum.

Missoula Christian Montessori School M

MCMS offers high-quality, Christ-centered Montessori schooling for ages 3-12, fostering human development and nurturing the spirit through education.

Missoula County 4-H M

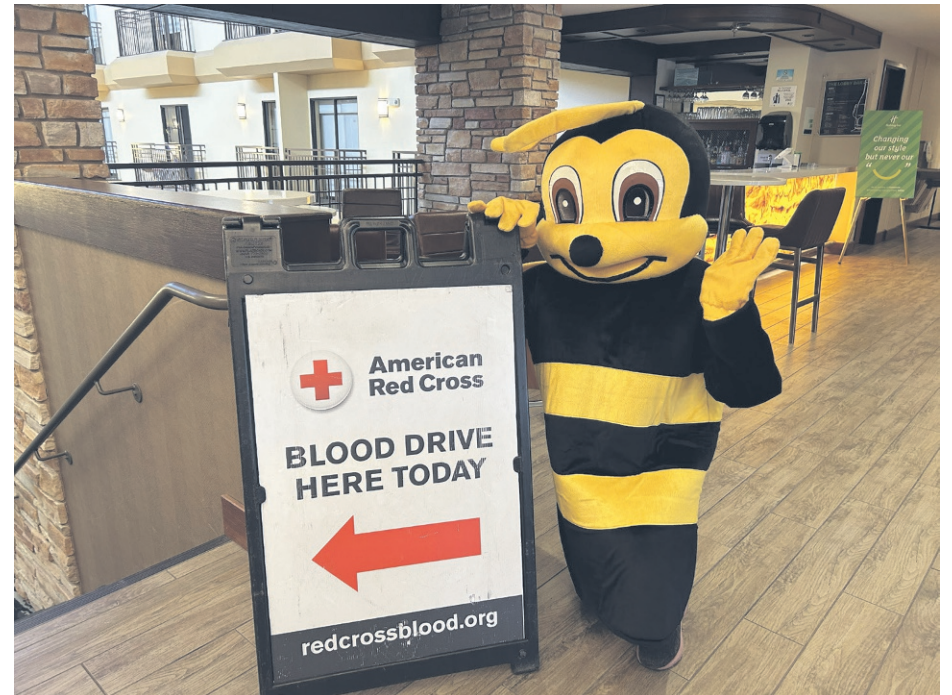
Missoula County 4-H empowers youth through hands-on learning in agriculture, leadership, and life skills. Support us during Missoula Gives to invest in the next generation of leaders!

Missoula Education Foundation M

The Missoula Education Foundation invests in MCPS educators and students to ensure success for all. We raise funds and build community support for enhanced educational opportunities.

Missoula Public Library Foundation M

MPLF supports Missoula's award-winning public library. This year's contributions will go towards a new bookmobile and expanded services to underserved communities -- and will be matched by the Otto Bremer Foundation.



INVEST IN THE SOUND OF TOMORROW



WHEN MISSOULA GIVES, MUSIC PLAYS!

Montana Free Press **B** **M**

Montana Free Press is an independent, nonprofit source for statewide news, information and analysis. We work independently and in collaboration with other news outlets to produce in-depth public-service journalism free to all.

Montana Jobs Network **B** **M**

Montana Jobs Network (MJN) is a statewide nonprofit expanding access to workforce pathways. As the philanthropic arm of the Montana High Tech Business Alliance, MJN creates on-ramps to high-paying careers that strengthen Montana's innovation economy.

Montana Natural History Center **B** **M**

Our mission is to promote & cultivate the appreciation, understanding, & stewardship of nature through education. We provide a multitude of programming & exhibits for all ages to enjoy the flora, fauna, geology, & ecology of MT.

Owl Research Institute **B** **M**

We conduct long-term research on owls, their prey, & habitat; educate the public & children; provide research data to land management agencies & conservation partners to maintain viable populations.

Ravalli County Museum & Historical Society **B** **M**

Ravalli County Museum presents exhibits, cultural events, archives & education focusing on local history, art & natural history. Open all year-free Thurs. & Sat. Our "Saturday Adventures" are free STEAM activities for families.

SPARK! Arts Ignite Learning **M**

The arts have the power to SPARK! the imagination, ignite innovation, and transform learning. SPARK! Arts Ignite Learning ensures equitable access to the arts for all K-8 Missoula County Public School students.

spectrUM Discovery Area **B** **M**

spectrUM Discovery Area is Missoula's hands-on science center, dedicated to igniting passion for discovery through science with cutting edge exhibits and engaging activities in our free museum.

Spirit at Play Early Childhood Program **M**

Spirit at Play Early Childhood Program emphasizes the development of social-emotional skills, the power of play, and community connection. Kindness guides our days; and nature and our beloved town are our extended classrooms.

Summit Career Center **B** **M**

We serve motivated adults 18+ through a six-month, tuition-free program leading to life-sustaining careers. With training, coaching, and personal growth, we help individuals build skills, confidence, and achieve lasting career and life success.



VETERANS VICTORY ALLIANCE

We are an all volunteer team of Veterans, First Responders and Community Members providing a beautiful recreational space for those who have served and their families. Each experience is tailored to the unique needs of your group - fly fishing, yoga, hiking, art projects, or other activities. Our passion is to leverage the abundant healing power of nature through shared outdoor activities to help fight the epidemic of suicide affecting Veterans and First Responders. Moon Eagle River Ranch is here for our guests to Reconnect, Recreate, and Rejuvenate, to strengthen families and our communities. Contact us today for more information or to schedule your event .



LEARN
MORE



www.veteransvictoryalliance.org / 719.661.9369

The Children's Center ^M

The Children's Center is a nonprofit preschool serving Missoula families. We provide high-quality early education in a caring, inclusive environment, helping children build confidence, curiosity, and a love of learning.

Valley Christian School ^{B M}

Valley Christian School is a PreK-12 school partnering with Christian families to provide educational excellence through a Biblical worldview, preparing students for lifelong faithfulness and service to Christ.

West Central Montana Avalanche Foundation ^{B M}

The West Central Montana Avalanche Foundation is the local nonprofit behind your Avalanche Center, providing forecasts, education, and backcountry safety tools across west-central Montana. Community-powered, this work saves lives.

Wild Rockies Field Institute ^M

The Wild Rockies Field Institute fosters the next generation of leaders and environmental stewards through field-based education in the American West by offering rigorous academic field courses.

Writing Coaches of Montana ^{B M}

Writing Coaches of Montana trains community members to support public school student literacy through one-on-one coaching with students, grades 4-12, at the invitation of teachers.

Zootown Homeschooling Community ^M

ZHC is a secular and inclusive community of home-educating families. Our members collaborate to share and create opportunities to connect through social and educational enrichment.

TOGETHER WE CAN MAKE A COMMUNITY IMPACT

- Home Health Care
- Hospice Care
- Durable Medical Equipment
- Infusion Services
- Home & Community Based Services
- Palliative Care

Support compassionate care close to home. Your Missoula Gives donation to Partners in Home Care helps provide vital health services to those in need across Western Montana

Offices in Missoula, Ronan & Hamilton

Contact us: 406-728-8848 • Partnersinhomecare.org



BRINGING
HEALTHCARE
HOME



Hope Hospice Center Care Provider



Donor Budget Form

**DONATE
APRIL 30
& MAY 1**

Make a giving plan! Decide how much you want to give and use this budget sheet to divvy it up among your favorite organizations and causes. When Missoula & Bitterroot Gives launches on Thursday, April 30th at 5:00 pm, you'll be ready to jump online at MissoulaGives.org to make your gifts.

Giving from a DAF or Stock? If you would like to give via a Donor Advised Fund (DAF) or Stock, please visit our Ways to Give page at MissoulaGives.org for instructions.

ANIMAL WELFARE

- \$ _____ 1 Horse at a Time Draft Horse Rescue Inc.
- \$ _____ Animal Wonders Inc.
- \$ _____ AniMeals
- \$ _____ Bitter Root Humane Association
- \$ _____ Footloose Montana
- \$ _____ Heidi's Kitten Rescue
- \$ _____ Humane Society of Western Montana
- \$ _____ Missoula AdvoCats
- \$ _____ Montana Pittie Project, Inc.
- \$ _____ River Pines Horse Sanctuary
- \$ _____ Wings Programs Equine Rescue & Sanctuary

ARTS & CULTURE

- \$ _____ A Quantum Dream
- \$ _____ Alpine Artisans, Inc.
- \$ _____ Arts Missoula
- \$ _____ Bare Bait Dance & Westside Theater
- \$ _____ Big Sky Film Institute
- \$ _____ Bitterroot Baroque, Inc.
- \$ _____ Bitterroot Dance Collective
- \$ _____ Bitterroot Performing Arts Council
- \$ _____ Crescendo Club Missoula
- \$ _____ Daly Mansion Preservation Trust
- \$ _____ Friends of Montana Shakespeare in the Parks
- \$ _____ Friends of the Historical Museum at Fort Missoula
- \$ _____ Garden City Ballet
- \$ _____ Giving Art to Missoula (GAM)
- \$ _____ Hamilton Players, Inc.
- \$ _____ Making Missoula
- \$ _____ MissCast Productions
- \$ _____ Missoula Art Museum
- \$ _____ Missoula City Band
- \$ _____ Missoula Community Chorus, Inc.
- \$ _____ Missoula Community Concert Band
- \$ _____ Missoula Community Radio - KFGM
- \$ _____ Missoula Symphony Association

- \$ _____ Missoula Writing Collaborative
- \$ _____ Montana International Choral Festival
- \$ _____ Montana Repertory Theatre
- \$ _____ Montana Thespians
- \$ _____ Northern Rockies Heritage Center
- \$ _____ Open AIR
- \$ _____ Preserve Historic Missoula
- \$ _____ Tell Us Something
- \$ _____ The Clay Studio of Missoula
- \$ _____ The Missoula Children's Theatre
- \$ _____ The Roxy Theater
- \$ _____ Travelers' Rest Connection
- \$ _____ Tuesday at Twelve
- \$ _____ Wheels on the Bus: mobile ceramics studio
- \$ _____ ZDK Arts
- \$ _____ Zootown Arts Community Center

COMMUNITY ADVOCACY

- \$ _____ Emmaus Campus Ministry
- \$ _____ Evaro Community Center
- \$ _____ Hamilton Downtown Foundation
- \$ _____ Home ReSource
- \$ _____ Missoula Community Foundation
- \$ _____ Missoula Downtown Foundation (MDF)
- \$ _____ Missoula Rotary Foundation
- \$ _____ O'Hara Commons & Sustainability Center
- \$ _____ Stretch Pool
- \$ _____ The Clark Fork River Market
- \$ _____ The LifeGuard Group
- \$ _____ The Pulp
- \$ _____ Tip the Host - MCF
- \$ _____ United Way of Missoula County

DISABILITY SERVICES

- \$ _____ Center for ASL Acquisition and Access
- \$ _____ Missoula Adaptive Recreation and Sports
- \$ _____ Opportunity Resources, Inc
- \$ _____ Ravalli Services
- \$ _____ Summit Independent Living
- \$ _____ The Arc Western Montana

- \$ _____ The ARK Foundation

EDUCATION

- \$ _____ Bitterroot Discovery Children's Museum
- \$ _____ Brightways Learning
- \$ _____ Clark Fork Preparatory High School
- \$ _____ Darby Brilliant Beginnings
- \$ _____ Ecology Project International
- \$ _____ Families First
- \$ _____ Grizzly Orienteering
- \$ _____ Hawthorne Elementary PTA
- \$ _____ Hellgate Elementary School District
- \$ _____ HerUpland
- \$ _____ Leadership Montana
- \$ _____ Lolo Watershed Group
- \$ _____ Lowell School PTA
- \$ _____ Missoula Butterfly House and Insectarium
- \$ _____ Missoula Christian Montessori School
- \$ _____ Missoula County 4-H
- \$ _____ Missoula Education Foundation
- \$ _____ Missoula Public Library Foundation
- \$ _____ Montana Free Press
- \$ _____ Montana Jobs Network
- \$ _____ Montana Natural History Center
- \$ _____ Owl Research Institute
- \$ _____ Ravalli County Museum & Historical Society
- \$ _____ SPARK! Arts Ignite Learning
- \$ _____ spectrUM Discovery Area
- \$ _____ Spirit at Play Early Childhood Program
- \$ _____ Summit Career Center
- \$ _____ The Children's Center
- \$ _____ Valley Christian School
- \$ _____ West Central Montana Avalanche Foundation
- \$ _____ Wild Rockies Field Institute
- \$ _____ Writing Coaches of Montana
- \$ _____ Zootown Homeschooling Community

TOTAL \$ _____

ENVIRONMENT

- \$ _____ 350 Montana
- \$ _____ Bitter Root Land Trust
- \$ _____ Bitterroot Water Partnership
- \$ _____ Blackfoot Challenge
- \$ _____ Bob Marshall Wilderness Foundation
- \$ _____ Clark Fork Coalition
- \$ _____ Climate Smart Missoula
- \$ _____ Families for a Livable Climate
- \$ _____ Five Valleys Land Trust
- \$ _____ Free Cycles Missoula
- \$ _____ Great Bear Foundation
- \$ _____ Great Burn Conservation Alliance
- \$ _____ Healthy Acres Healthy Communities Foundation
- \$ _____ Missoula Mountain Bike Coalition
- \$ _____ Montana Environmental Information Center/MEIC
- \$ _____ Montana Watershed Coordination Council
- \$ _____ Montana Wildlife Federation
- \$ _____ MUD Project
- \$ _____ Northern Rockies Research & Educational Services
- \$ _____ Raptor View Research Institute
- \$ _____ Recycling Works
- \$ _____ Selway Bitterroot Frank Church Foundation - MONTANA
- \$ _____ Society for Wilderness Stewardship
- \$ _____ Swan Valley Connections
- \$ _____ The Salmonfly Project
- \$ _____ The Watershed Education Network
- \$ _____ Wild Montana - Missoula
- \$ _____ Wild Skies Raptor Center
- \$ _____ Wilderness Watch
- \$ _____ Working Dogs for Conservation

ETHNIC & IMMIGRANT SERVICES

- \$ _____ International Rescue Committee in Montana
- \$ _____ Soft Landing Missoula

HEALTH & WELLNESS

- \$ _____ Aspen Trail Therapeutic Riding and Equine Assisted Services
- \$ _____ AWARE
- \$ _____ Bitterroot Cross Country Ski Club
- \$ _____ Blue Mountain Clinic Family Practice
- \$ _____ Brain Injury Alliance of Montana
- \$ _____ Camp Mak-A-Dream (Children's Oncology Camp Foundation)
- \$ _____ Cancer Support Community Montana
- \$ _____ Casting for Recovery - Western Montana

- \$ _____ Community Health Alliance
- \$ _____ Farm Connect Montana
- \$ _____ Missoula Curling
- \$ _____ Missoula Figure Skating Club
- \$ _____ Missoula Ski Education Foundation
- \$ _____ Montana Abortion Access Program
- \$ _____ MT Alpha
- \$ _____ MTCX Events & Programs
- \$ _____ NAMI Missoula
- \$ _____ Open Aid Alliance
- \$ _____ Partners Hope Foundation
- \$ _____ Partners In Home Care
- \$ _____ Planned Parenthood of Montana
- \$ _____ RMHC of Western Montana
- \$ _____ Stepping Stones Behavioral Health Services, Inc
- \$ _____ Strikers FC
- \$ _____ Tamarack Grief Resource Center

HOMELESSNESS & HOUSING

- \$ _____ Front Step Community Land Trust
- \$ _____ Habitat for Humanity of Missoula
- \$ _____ Homeword
- \$ _____ Housing Advocate Network, a Program of Missoula Interfaith Collaborative
- \$ _____ Keep Missoula Housed (formerly Dubbers Care)
- \$ _____ Loads of Dignity
- \$ _____ Mountain Home Montana
- \$ _____ Poverello Center
- \$ _____ Watson Children's Shelter
- \$ _____ YWCA Missoula

LGBTQ+

- \$ _____ Missoula Pride
- \$ _____ Western Montana LGBTQ+ Community Center

POVERTY & HUNGER

- \$ _____ Garden City Harvest
- \$ _____ Missoula Food Bank & Community Center
- \$ _____ Montana Food Bank Network
- \$ _____ Stevensville Pantry Partners Food Bank

SENIORS

- \$ _____ Missoula Aging Services
- \$ _____ Missoula Senior Center
- \$ _____ Ravalli County Council on Aging

SOCIAL JUSTICE

- \$ _____ Big Sky Immigration Legal Services & Advocacy
- \$ _____ Community Dispute Resolution Center of Missoula
- \$ _____ Forward Montana Foundation
- \$ _____ Jeannette Rankin Peace Center
- \$ _____ Montana Innocence Project
- \$ _____ MontPIRG Leadership Fund

SUBSTANCE ABUSE PREVENTION

- \$ _____ Crosswinds Recovery
- \$ _____ Fourth D Inc

VETERANS

- \$ _____ Dog Tag Buddies
- \$ _____ Red Willow Learning Center
- \$ _____ Rocky Mountain Museum of Military History
- \$ _____ Veterans Victory Alliance Moon Eagle River Ranch

WOMEN'S ISSUES

- \$ _____ Montanans for Choice

YOUTH

- \$ _____ A Carousel for Missoula
- \$ _____ Big Brothers Big Sisters NW Montana
- \$ _____ Boys & Girls Club of Missoula County
- \$ _____ CASA of Missoula
- \$ _____ Center for Restorative Youth Justice
- \$ _____ Common Goal Montana
- \$ _____ Early Years Crisis Care
- \$ _____ Emma's House CAC
- \$ _____ EmpowerMT
- \$ _____ Friends of the Children - Western Montana
- \$ _____ Girls on Shred
- \$ _____ Glacier Ice Rink
- \$ _____ Greater Missoula Youth for Christ
- \$ _____ Make-A-Wish South Dakota & Montana
- \$ _____ Missoula Family YMCA
- \$ _____ Missoula Wild Lacrosse
- \$ _____ Montana Foster Closet
- \$ _____ Play Like Robert Foundation
- \$ _____ Scouting America, Montana Council
- \$ _____ The Parenting Place
- \$ _____ Youth Homes

TOTAL \$ _____

ENVIRONMENT

350 Montana M

Locally, we advance Missoula's goal of 100% clean energy by 2030. We oppose the NorthWestern Energy-Black Hills Energy merger, warning of higher bills, data center demands, water impacts, and risks to small rate-payers without stronger protections.

Bitter Root Land Trust B

The Bitter Root Land Trust is a nonprofit organization that partners with landowners and our community to conserve clean water, wildlife habitat, and working farms and ranches in and around the Bitterroot Valley for present and future generations.

Bitterroot Water Partnership B

The Bitterroot Water Partnership leads reliable and intentional conservation initiatives that promote and provide clean, ample water for people and healthy habitats by working with key partners and our communities.

Blackfoot Challenge M

The Blackfoot Challenge is a collaborative organization that facilitates community-driven stewardship to ensure the future for the Blackfoot watershed's natural resources and rural communities.

Bob Marshall Wilderness Foundation M

Your donation opens trails and restores habitat in the Bob Marshall Wilderness Complex through volunteer adventures, education, and career pathways that foster lifelong connections to this landscape.

Clark Fork Coalition M

The Clark Fork Coalition protects & restores the Clark Fork River watershed. For four decades, we've worked to restore & sustain the river & its tributaries, ensuring a clean, cold, & abundant flow for future generations.



Climate Smart Missoula M

Climate Smart Missoula accelerates climate solutions for Missoula and beyond, through collaborative programs, advocacy, and catalyzing climate leadership. We envision a climate-safe, equitable, and resilient community and world.

Families for a Livable Climate M

Families for a Livable Climate creates community for climate action in MT. We engage families of all kinds in community-oriented climate events, educational opportunities, advocacy, & leadership to ensure a livable future for all.

Five Valleys Land Trust M

For over 50 years, Five Valleys Land Trust has worked to protect and steward western Montana's waters, wildlife habitat, agricultural lands, and community open spaces and trails.

MISSOULA GIVES
&
Bitterroot Gives



Free Cycles Missoula M

Free Cycles believes we all have the right to move freely and safely in an unpolluted world. We support sustainability by providing access to recycled and repurposed bicycles and a gathering place for a healthy community.

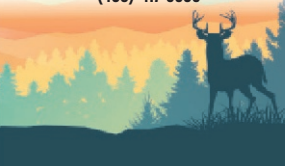
Great Bear Foundation M

Great Bear Foundation gives voice to the bear. We work to conserve bear populations and bear habitat through education, community engagement, and grassroots advocacy.

The Montana Wildlife Federation is Montana's oldest, largest, and most effective wildlife conservation organization. Our roots trace back to 1936 when hunters, anglers and other conservationists joined landowners to address the loss of Montana's natural lands, healthy waters and abundant wildlife. The decades of westward expansion prior to the 1930's left wildlife populations decimated throughout North America, and Montana was no exception. That year the first North American Wildlife Conference was held in Washington D.C. and wildlife conservation was thrust into the limelight. The National Wildlife Federation, Montana Wildlife Federation, and many other state wildlife organizations were formed. Since then, MWF has championed scientific wildlife management and fought to conserve the great natural resources found in this state and wildlife populations have rebounded. This legacy is maintained through our dedicated staff and volunteers.



<https://montanawildlife.org/>
PO Box 7615, Missoula, MT 59807
(406)-417-9909



Great Burn Conservation Alliance M

The Great Burn Conservation Alliance works to foster a connection between people and place to further conservation and stewardship of the Great Burn ecosystem.

Healthy Acres Healthy Communities Foundation M

Provides philanthropic support for educational programs at the Rocky Mountain Gardens and Exploration Center. Youth and adult programs focus on sustainable gardening, nutrition, horticulture and land management.

Missoula Mountain Bike Coalition M

We maintain and build trails on public lands in and around Missoula, promote mountain biking through events and outreach initiatives and advocate for bike access on multiple use landscapes.

Montana Environmental Information Center/MEIC B M

Since 1973, the Montana Environmental Information Center (MEIC), a statewide environmental organization, has been advocating for a clean and healthful environment, and remains committed to securing a livable future for all Montanans.



Support Local Students



Help us bring **free** one-on-one coaching to public school classrooms in Missoula and the Bitterroot





Montana Watershed Coordination Council

B M

Our mission is to empower Montana communities to achieve local land and water conservation and restoration goals.

Montana Wildlife Federation **B M**

For 90 years, the mission of the Montana Wildlife Federation has been to work to protect Montana's fish and wildlife, public lands, clean waters, and fair chase hunting and fishing heritage.

MUD Project **M**

The MUD Project is a tool library, demonstration site, & skill-sharing hub rolled into one. Since 1981, MUD has worked toward the vision of a world in which tools & skills are shared for the betterment of our community & planet.



←
Scan Me

Northern Rockies Research & Educational Services **B M**

NRRES is dedicated to advancing scientific research, education, and conservation of insects and other wildlife.

Raptor View Research Institute **B M**

RVRI's mission is to provide knowledge of raptors and the ecosystems that support them to the public and scientific community through research, conservation, and education.

Recycling Works **B M**

Recycling Works is a nonprofit organization bringing sustainable waste management practices to Missoula.

Selway Bitterroot Frank Church Foundation - MONTANA **B M**

The Selway Bitterroot Frank Church Foundation opens pathways for all to discover and steward the Selway-Bitterroot and Frank Church-River of No Return Wilderness areas and surrounding wildlands.

Society for Wilderness Stewardship **B M**

Wild places like Missoula's Rattlesnake & the Anaconda-Pintler need dedicated champions. SWS trains land managers & builds the capacity to protect & steward these iconic landscapes—ensuring Montana's wild places remain wild for generations to come.

Swan Valley Connections **M**

SVC's mission is to lead and inspire conservation and expand stewardship in the Swan Valley.

The Salmonfly Project **B M**

The Salmonfly Project aims to conserve aquatic insects and the fisheries they support through research, monitoring, education, and sound management and restoration practices.

The Watershed Education Network ^M

Since 2004, WEN has led youth, schools, & adults to their rivers and creeks - exploring, observing, collecting data to build connections & foster stewardship. WEN guides everyone to becoming citizen scientists.

Wild Montana - Missoula ^B ^M

Wild Montana unites communities around a shared love of wild places. Together, we impact decisions on public lands and waters that sustain Montana's people, communities, and wildlife.

Wild Skies Raptor Center ^B ^M

Wild Skies is celebrating 15 years of rescuing Montana's injured raptors! You can help us give these magnificent birds a second chance to fly free again.

Wilderness Watch ^B ^M

Wilderness Watch is America's leading organization solely dedicated to the preservation and proper stewardship of lands and rivers included in our National Wilderness Preservation System.

Working Dogs for Conservation ^M

Working Dogs for Conservation (WD4C) has a long history and proven track record training and deploying conservation dogs to protect wildlife and wild places throughout the United States and internationally.



ETHNIC & IMMIGRANT SERVICES

International Rescue Committee in Montana ^M

A global humanitarian organization serving people impacted by conflict, disaster, and displacement. We offer immigration legal services and economic empowerment services that help families integrate into communities and achieve financial stability.

Soft Landing Missoula ^M

Soft Landing Missoula offers refugees and immigrants a warm welcome and support as they start anew while also building bridges of understanding through learning opportunities for the broader community.

WELCOME TO VALLEY CHRISTIAN SCHOOL
Missoula, MT

192 CHRISTIAN FAMILIES SERVED

303 PREK-12TH GRADE STUDENTS

7% VCS Students Pursue Military & Career Training Paths

93% VCS Students Pursue Higher Education

46+ Years of Partnering with Christian Families; All for His Glory.

Valley Christian School is honored to be recognized as a **Purple Star School** Serving and supporting military families.

Athletics: Girls Volleyball, Football, Boys & Girls Basketball, Track & Field, Tennis

JH/HS Students Develop God-given talents through Band, Worship, Art & Drama. **PreK-5th Students** Grow creativity, confidence & faith through Art, Music & Library.

Contact Us: valleychristian.org | 406.549.0482 | 2526 Sunset Ln. Missoula, MT 59804

Schedule a Tour Today! | Scholarships Available!

HEALTH & WELLNESS

Aspen Trail Therapeutic Riding and Equine Assisted Services **B** **M**

We make horsemanship accessible to youth and adults with physical, mental, or social/emotional needs, focusing on veterans, first responders, and people with disabilities. Our clients experience healing, joy, and inner strength—one ride at a time.

AWARE **B** **M**

AWARE provides early childhood, mental health, and developmental disabilities services to children, youth and, adults through a mission of helping people live independent lives.

Bitterroot Cross Country Ski Club **B**

The Bitterroot Cross Country Ski Club is a nonprofit whose purpose is to provide Nordic (cross-country) and skate skiing on the best cross-country ski trails in Montana or Idaho at both Chief Joseph Pass and Lake Como.

Blue Mountain Clinic Family Practice **M**

Blue Mountain Clinic provides full-scope family medicine, sexual and reproductive healthcare including contraception and abortion, gender affirming care, and mental health counseling to Missoula and beyond.

Brain Injury Alliance of Montana **B** **M**

The Brain Injury Alliance of Montana supports 44,000 survivors through prevention, advocacy and education. Your donation will provide free helmets and vital resources for families across the state.



Camp Mak-A-Dream (Children's Oncology Camp Foundation) **B** **M**

We empower survivors and their families to live with and beyond cancer through life-changing Montana experiences where they strengthen life skills, gain resilience, and develop lasting relationships.

Cancer Support Community Montana **M**

Cancer Support Community Montana uplifts and strengthens people impacted by cancer by providing support, fostering compassionate communities, and offering psychosocial care and resources.

Casting for Recovery - Western Montana **B** **M**

CfR provides free fly fishing retreats on the Blackfoot River for women with breast cancer. Retreats combine peer support with fishing instruction while unleashing renewed energy.

Community Health Alliance M

Community Health Alliance supports western Montanans through health education, outreach and grants, connecting individuals to vital resources and promoting lifelong health and safety in our communities.

Farm Connect Montana M

At Farm Connect Montana (formerly CFAC), our mission is to grow a healthy local food community by preserving farmland, teaching new farmers, and making food accessible for all.

Missoula Curling B M

Missoula Curling's mission is to introduce Western Montanans of all ages, abilities and backgrounds to the fun, inclusive and social Winter Olympic sport of curling.

Missoula Figure Skating Club B M

Founded in 1997, the Missoula Figure Skating Club's nearly 100 members of all ages share their love of skating at Glacier Ice Rink. MFSC offers Learn to Skate and advanced lessons, annual ice shows and a competition.

Missoula Ski Education Foundation B M

We are a nonprofit youth ski organization that fosters a lifelong love of skiing and builds community through skiing.

Montana Abortion Access Program B M

The Montana Abortion Access Program (MAAP) protects and fosters reproductive autonomy by providing access to abortion care through financial, logistical, and emotional support.

MT Alpha M

Alpha Cycling is a club dedicated to getting more identifying women, girls, and non-binary people on bikes. We focus on cultivating skills, confidence, and competition through clinics, group rides, training, and race support.

MTCX Events & Programs M

To support all members of our community in their desire to enjoy time spent recreating outdoors. We enable and promote personal growth, camaraderie, and confidence through outdoor sports, events, and programs.

NAMI Missoula M

NAMI Missoula is an organization of families, friends and individuals whose lives have been affected by mental illness. Together, we advocate for better lives for those individuals who have a mental illness.

Open Aid Alliance M

We offer low-barrier healthcare & referrals to those likely to face stigma in a traditional setting, such as HIV/AIDS patients, the unhoused, & drug users. Through education & advocacy we are committed to hope & healing for all.



Montana Foster Closet provides First Night Bags for children entering foster care. These bags are curated by age/gender and filled with essential toiletries and comfort items.

Help a child feel seen in a moment of trial and uncertainty.



Partners Hope Foundation B M

Partners Hope Foundation, a 501(c)(3), opened Hope Hospice Center in July 2025. It fills a critical care gap in Western Montana, offering 24/7 end-of-life care, family support, and community resources.

Partners In Home Care B M

Partners In Home Care, Inc. is passionately committed to assisting patients and families in achieving optimal health, independence, and comfort through high quality, cost-effective home and community health-related services.

Planned Parenthood of Montana M

Planned Parenthood of Montana leads by providing, promoting, and protecting sexual and reproductive health care and education for all Montanans.

RMHC of Western Montana B M

RMHC of Western Montana is a home away from home for families with a critically ill child receiving medical care in Missoula, and a place of respite for high-risk pregnant women who need to stay close by the hospital.

Stepping Stones Behavioral Health Services, Inc M

Stepping Stones is a 501(c)(3), Montana substance use disorder facility providing outpatient, intensive outpatient, and peer support services for addiction and gambling disorders in the Missoula area. We aim to reduce barriers to accessing services.

Strikers FC B M

Strikers FC provides soccer experiences for children in the Missoula and Bitterroot community. We serve over 2000 children from the ages 3-19 through our recreational and competitive programming.

Tamarack Grief Resource Center B M

Tamarack Grief Resource Center strengthens and honors individuals, families, and communities throughout their journey with grief. Our programs include grief support programs, grief education, and counseling.

HOMELESSNESS & HOUSING

Front Step Community Land Trust M

Front Step CLT is a collective of neighbors building community power, thriving neighborhoods, and affordable homes.

Habitat for Humanity of Missoula **M**

Habitat for Humanity of Missoula builds homes in partnership with income-qualified Missoula families and ensures affordability with our zero interest mortgages.

Homeward **M**

For 29 years, we have used sustainable methods to strengthen Montana communities by teaching homebuyer education and financial skill building and creating safe, healthy homes people can afford.

Housing Advocate Network, a Program of Missoula Interfaith Collaborative **M**

Missoula Interfaith Collaborative (MIC) runs three programs—Family Promise, Housing Advocate Network, & Missoula Works—focused on housing, employing, & feeding Missoulians.

Keep Missoula Housed (formerly Dubbers Care) **B M**

A local charity with a mission to support Western MT families in times of crisis by providing one time funding for housing related needs, such as: rent/mortgage payments, security deposits, utility bills, & emergency hotel stays.

Loads of Dignity **B**

Restoring dignity one load at a time. Loads of Dignity provides free laundry, hygiene supplies, and compassionate support to the homeless and low-income in need of clean clothes and bedding across the Bitterroot Valley.

Mountain Home Montana **M**

Mountain Home Montana empowers mothers and children to build strong foundations and thrive. Our vision: a Montana where all families heal from adversity and embrace their brightest futures.

Poverello Center **M**

The Poverello Center provides food, shelter, help, and hope to all who ask. 2024 was our 50th anniversary, and we are proud to have been serving Missoula through emergency shelter and other programs for a half-century.

Watson Children's Shelter **M**

Watson Children's Shelter provides a safe haven for children in crisis. We are also laser-focused on preventing child abuse and neglect altogether through our Healthy Foundations program.

YWCA Missoula **M**

YWCA Missoula Youth Programs support and empower children and families who have experienced houselessness and/or domestic violence. Services include therapeutic play, social-emotional skill building, and leadership development.

Bitterroot Gives



LGBTQ+

Missoula Pride M

Missoula Pride aims to once again bring a large-scale Pride celebration to Missoula and Western Montana, creating spaces for all gender and sexual identities to be seen, heard, and feel connected.

Western Montana LGBTQ+ Community M

The Western Montana LGBTQ+ Center is a volunteer-powered, community-supported nonprofit serving 2SLGBTQ+ people across Western Montana by providing support, connection, and partnerships that build community and resilience.

POVERTY & HUNGER

Garden City Harvest M

We plant seeds and grow together to create a healthy Missoula through our 20+ school gardens, community gardens and neighborhood farms. We're celebrating 30 years of growing food with and for this community.

Missoula Food Bank & Community Center M

Missoula Food Bank & Community Center's mission is to lead the movement to end hunger through activism, volunteerism and healthy food for all. We nourish community.

Montana Food Bank Network B M

Montana Food Bank Network is Montana's only statewide food bank, serving communities across the state since 1983. Our mission is to end hunger in Montana through food acquisition and distribution, education, and advocacy.



Stevensville Pantry Partners Food Bank B

The mission of Pantry Partners Food Bank is to provide food for those in need residing in Stevensville, Florence and Victor. We are committed to reducing hunger with compassion, dignity, and respect.

SENIORS

Missoula Aging Services M

We help older adults age at home with confidence. With 30 programs, we address the most pressing needs by providing daily meals, family caregiver & in-home support, volunteer opportunities, & advocacy & connection to resources.

Missoula Senior Center M

Since 1970, the Missoula Senior Center has supported physical, intellectual, & emotional health by serving as a focal point for activities enhancing health, education, recreation, & socialization for seniors & families.

MISSOULAGIVES

Ravalli County Council on Aging B

We help older adults stay in their homes by providing meals, transportation, caregiver support, Medicare counseling, health programs, and advocacy. Beyond services, we foster connection to reduce loneliness and isolation in our rural community.

SOCIAL JUSTICE

Big Sky Immigration Legal Services & Advocacy B M

Big Sky Immigration Legal Services & Advocacy expands access to high-quality immigration legal aid in Missoula and across Montana, providing direct representation, education, and advocacy for immigrant communities.

Community Dispute Resolution Center of Missoula M

From Dispute to Dialogue: CDRC offers affordable alternative dispute resolution services regardless of income. We train mediators and provide high-quality services to resolve conflicts, relieve courts, and bridge the justice gap.

Forward Montana Foundation M

Forward Montana is the state's largest youth-led, youth-focused civic engagement organization. We educate, engage, and organize young Montanans to shape their democracy to improve their lives and the lives of fellow Montanans.

Jeannette Rankin Peace Center M

The Jeannette Rankin Peace Center stands for peace rooted in justice, equity, and connection. Through education, dialogue, and nonviolent action, we build relationships, bridge differences, and cultivate a culture of care.

Montana Innocence Project B M

The Montana Innocence Project (MTIP) is a statewide nonprofit organization dedicated to exonerating the innocent and preventing wrongful convictions in Montana.

MontPIRG Leadership Fund B M

MontPIRG empowers college students to tackle social, economic, and environmental challenges through civic engagement. Through internships, campaigns, and events, we build skills and drive positive change for a healthier, more just Montana.



Scan Me



SOFT LANDING MISSOULA offers a long welcome to refugees and immigrants in Missoula, helping new neighbors find the support, connection, and belonging needed to integrate and thrive.

SUBSTANCE ABUSE PREVENTION

Crosswinds Recovery **B** **M**

Crosswinds Recovery combines safe housing, professional treatment services, peer connection, and life skills development to help people move from crisis to substance-free, long-term wellness while building meaningful, self-directed lives in recovery.

Fourth D Inc **M**

The mission of Fourth D Inc. is to provide a safe, alcohol and drug free environment, for people whose lives have been impacted by the disease of alcoholism and/or drug addiction.

VETERANS

Dog Tag Buddies **B** **M**

Dog Tag Buddies provides therapeutic programs that improve daily life and mobility for veterans with invisible wounds. We strengthen mental health, build community, and work to reduce suicide by serving those who served us.

Red Willow Learning Center **B** **M**

Resilience surrounds us. Like nature, humans can rewire after trauma. Ancient whole-body practices-now backed by science-help process the past and foster post-traumatic growth. We teach safe, proven skills to bounce forward.

Rocky Mountain Museum of Military History **B** **M**

The Rocky Mountain Museum of Military History preserves and shares the history of the U.S. Armed Forces through exhibits, programs, and events at Fort Missoula, highlighting conflicts from the American Revolution to modern times.

Veterans Victory Alliance Moon Eagle River Ranch **B**

Moon Eagle River Ranch provides a dedicated 16 acre facility on the Bitterroot River for Veteran, and First Responders, and families for tailored retreat programs and outdoor recreational activities.

WOMEN'S ISSUES

Montanans for Choice **M**

Montanans for Choice is a nonprofit organization working to advance gender equity, sexual health, and reproductive freedom through public education, communications, and advocacy.



MISSOULAGIVES by



Missoula
Community
Foundation

IGNITE THE SPARK! SUPPORT ARTS FOR OUR KIDS

ARTS IGNITE LEARNING

YOUTH

A Carousel for Missoula M

Built to provide children and children at heart with an affordable, interactive, screen-free option for FUN! A Carousel for Missoula exists to unite our community, foster inclusion and spread Joy!

Big Brothers Big Sisters NW Montana M

Big Brothers Big Sisters NW Montana creates and supports one-to-one mentoring relationships that ignite the power and promise of youth across our communities.

Boys & Girls Club of Missoula County M

BGCM provides a safe and fun place for kids through after-school and summer programs with dedicated mentors and activities aimed to empower children to excel academically, develop strong character, and adopt healthy lifestyles.

CASA of Missoula M

Court Appointed Special Advocates (CASA) of Missoula recruits, trains, and supports community volunteers to advocate for children who have experienced abuse or neglect.

Center for Restorative Youth Justice M

CRYJ reduces youth involvement with the legal system by employing restorative justice principles to repair harm and connect community; Missoula-based programming will begin in late 2025.

Common Goal Montana M

We foster belonging, leadership and cross-cultural understanding by engaging refugee youth in competitive soccer in Missoula. We strengthen our entire community through shared love of the beautiful game.





Early Years Crisis Care **M**

Early Years Crisis Childcare in Missoula provides temporary respite childcare for ages 0-8 at no cost to families experiencing crisis to prevent child abuse and neglect and strengthen Missoula's families.

Emma's House CAC **B**

Emma's House is a Children's Advocacy Center providing safe, compassionate forensic interviews for children experiencing abuse or neglect, along with medical care and counseling for children and families, supporting the first steps toward healing.

EmpowerMT **B M**

EmpowerMT creates a more just and inclusive society by developing youth and adult leaders who work to end mistreatment, correct systemic inequities, and strengthen communities across Montana and beyond.

MISSOULA GIVES
&
Bitterroot Gives

Friends of the Children - Western Montana **M**

At Friends of the Children we work to break the cycle of generational poverty by pairing children who have big hopes and dreams and who also face the most obstacles with a long-term professional mentor for 12+ years.

Girls on Shred **M**

Girls on Shred's mission is to empower youth and marginalized genders including women, non-binary, and trans folk, and build community through action sports skill-building, equipment sharing, and accessible community events.

Glacier Ice Rink **M**

Glacier Ice Rink offers a welcoming space where community members of all ages and abilities can gather to learn, play, and connect through ice sports.

BODILY AUTONOMY FOR ALL

Help us expand access to sexual and reproductive care across Montana



MTCHOICE.ORG

SUPPORT MONTANANS FOR CHOICE

Greater Missoula Youth for Christ B M

YFC is a movement that reaches young people with the hope of Christ through mentorship, faith, and community. Through City Life Community Center, we provide programs, outreach, and support for teens across Missoula, Helena, and the Bitterroot.

Make-A-Wish South Dakota & Montana B M

Together, we grant life-changing wishes to children with critical illnesses, which proven by research help improve the child's quality of life, giving them a better chance of survival.

Missoula Family YMCA M

The Missoula Family YMCA has served the greater Missoula community since 1967! From youth sports and summer camp to group fitness classes and child care, we offer programs that help Western Montanans reach their full potential.

Missoula Wild Lacrosse M

Missoula Wild Lacrosse is committed to offering a safe, kid-centered, and fun environment for playing lacrosse, while teaching valuable life lessons best learned through sports. Serving K-12 grades, our league competes statewide.

Montana Foster Closet B M

We provide curated First Night Bags (by age/gender) to DPHHS offices across Montana in hopes that each child entering foster care will feel seen and valued in that moment of uncertainty.

Play Like Robert Foundation B

Play Like Robert engages in charitable and educational activities. Our mission is to make an impact in the community, create engaging environments for children to get active, and support educational systems and resources.



Make some riffles.
Protect what you love.

A scenic photograph of the Clark Fork River flowing through a valley with mountains in the background under a blue sky with light clouds.

 *Working to protect and restore the Clark Fork and Bitterroot Rivers and their tributaries since 1985.*



Scouting America, Montana Council B M

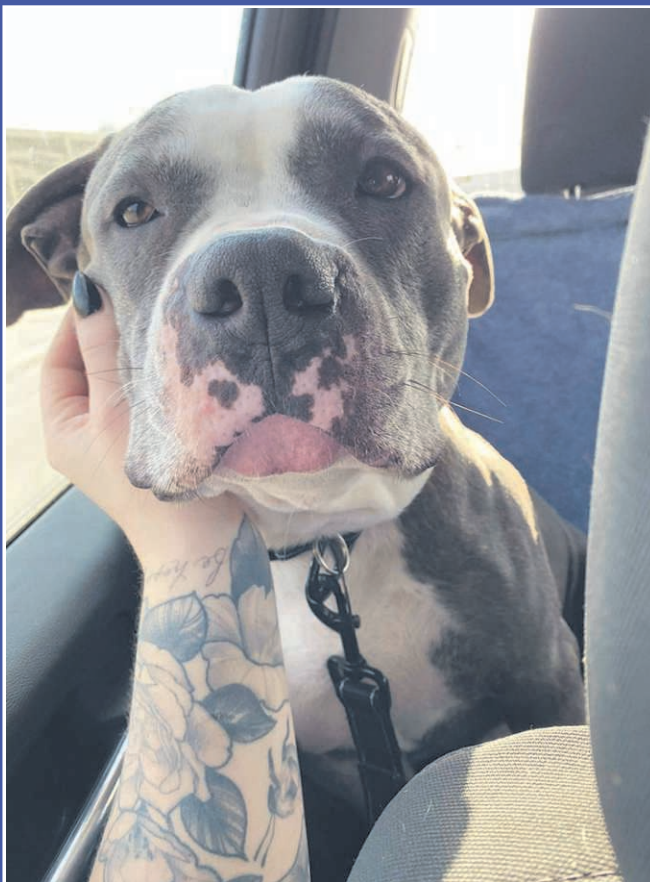
Scouting America, Montana Council: Scouting is fun with a purpose, helping young people grow into inspired leaders. We build the foundation for humility and compassion, strengthening character through action and adventure.

The Parenting Place M

The Parenting Place is a community-based, nonprofit organization whose mission is the prevention of child abuse and neglect through strengthening families since 1981.

Youth Homes M

Youth Homes has cared with youth and families through our shelters, group homes, family services, and our foster care and adoption program for over 50 years. We're honored to serve such incredible kids and help them grow up.



Support Shelter Dogs

Montana Pittie Project rescues bully breeds from death row, to care for them and find them homes, and to engage the hearts and minds of our community to bring about an end to the needless killing of abandoned and abused bully breeds.

Help Save a Dog's Life Today!



Your generosity makes our work possible!

montanapittieproject.com



Calendar of Events

Missoula & Bitterroot Gives is more than just a fundraising day - it's a celebration of our community spirit. It serves as a platform to foster a culture of giving, helping local organizations grow their supporter networks and showcase the incredible impact they have on our region.

We invite you to engage with our nonprofit partners and the Foundation team at events happening throughout the community! Many participating organizations are hosting fun, engaging activities all day long.

To see the full schedule, visit:
MissoulaGives.org/info/events

Saturday, April 25th - Thursday, April 29th

Polly Photo Contest

Not every community giving day has a mascot, but we have two! Polly, the pollinator of great things, and her sidekick Buzz are busy as bees spreading the word about Missoula & Bitterroot Gives. While Polly pollinates kindness and philanthropy throughout Missoula, Buzz stays busy in the Bitterroot, pollinating generosity across the valley.

How to Enter: Snap a picture with Polly or Buzz and submit it online between **April 25th and April 29th** to be entered to win **\$250** to donate to your favorite participating nonprofit!

- **Find Polly & Buzz:** Check their full schedules at MissoulaGives.org/info/polly.
- **Follow the Fun:** See where they land on Instagram @pollythepollinator.

Wednesday, April 29th

Bitterroot Kickoff Party at Bitterroot Brewing 5:00 to 8:00 pm

Join us in Hamilton to kick off the festivities! Connect with local Bitterroot nonprofits and fellow donors as we gear up for the big day. **Show your receipt of a donation to any participating nonprofit and get a beer card!**



Thursday, April 30th

Children's Hour at the Missoula Public Library

11:30 am to 12:30 pm

Bring your young citizens to visit Polly at the Missoula Public Library for a fun exercise in giving. Make a small donation and get tickets that children can add to our "giving buckets." All participants will receive a sticker and be entered to win a prize. Please find us on the 2nd floor in the children's area.

Launch Party at PLONK

5:00 to 8:00 pm

Join us for the Missoula Gives launch party at PLONK! Make a gift of \$10 or more to any participating nonprofit and receive a \$5 token for a food or drink item as a thank you for powering the start of our giving day.

Friday, May 1st

Blood Drive at Peak Health & Wellness

Blue Mountain Location | 12:00 to 5:00 pm

Give a life-saving gift of blood during Missoula Gives. Join the blood drive at Peak Health & Wellness; register at RedCrossBlood.org using code: PEAK.

Finale Celebration at Cranky Sam Public House

5:00 to 8:00 pm

Let's celebrate the final countdown together! Watch the live leaderboards and enjoy live music as we cross the finish line. **To toast our community's generosity, the Missoula Community Foundation is hosting a round of "Bee's Knees" cocktails for our donor community. Stop by the Foundation table to say hello and pick up a drink token while supplies last! Let's pack the house and toast to our community!**

WHY ARE OUR ANIMALS SO HAPPY?

YOU! Your donation provides shelter, care and enrichment for all of the animals that call BRHA home before finding their forever home. Donate today!



406.363.5311
www.bitterroothumane.org



THANK YOU TO OUR

Missoula & Bitterroot Gives is a true community effort. This day of giving is only possible because of the incredible businesses and organizations that believe in the power of our local nonprofits. Our sponsors provide the resources, the prizes, and the platform that allow our community to come together and lift up the causes we love. We are deeply grateful for their commitment to making our community a more vibrant place for everyone.

Presented by:



Supporting Partners:

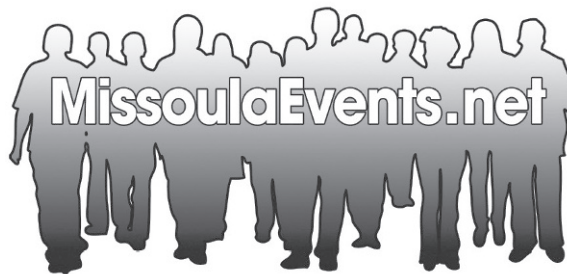


Bee the Change Station Partners:



GENEROUS SPONSORS

Media Partners:



Nonprofit Prize Partners:

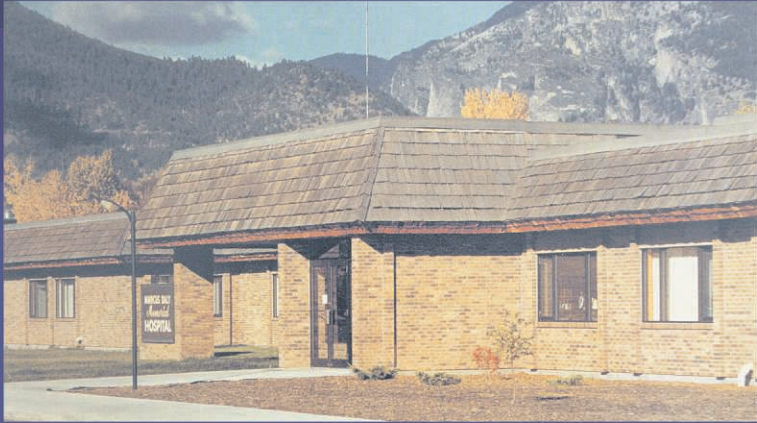


JOIN THE MOVEMENT

Interested in becoming a sponsor for Missoula & Bitterroot Gives? Help us grow our impact and showcase your commitment to our community. To learn about partnership opportunities for 2027, please contact us at marcy@missoulacommunityfoundation.org.



A program of Missoula Community Foundation



Give like Margaret

Margaret Daly's philanthropic spirit is what has allowed us to care for the valley for nearly 100 years.

Scan the code to donate or for more information.



Thank you to our generous community for the many charitable efforts that help many in our valley.



**Bitterroot Health
Foundation**

To learn more about the many ways you can make a difference, please contact us:
(406) 375-4764 Foundation@bitterroothealth.org