

I-90/US85 Spearfish Rest Area/Welcome Center Corridor Study



Spearfish City Hall
September 28, 2022



Stop and Talk: The Dangers of Driving while Fatigued



Agenda

- 
- Introductions
 - Background & Project Goals
 - Study Team

- Corridor Constraints
- Traffic Volumes
- Existing Site
- Environmental Screening

- Schedule
- Next Steps
- Staying Involved



Introductions

Project Team

SDDOT

Stantec

FHU

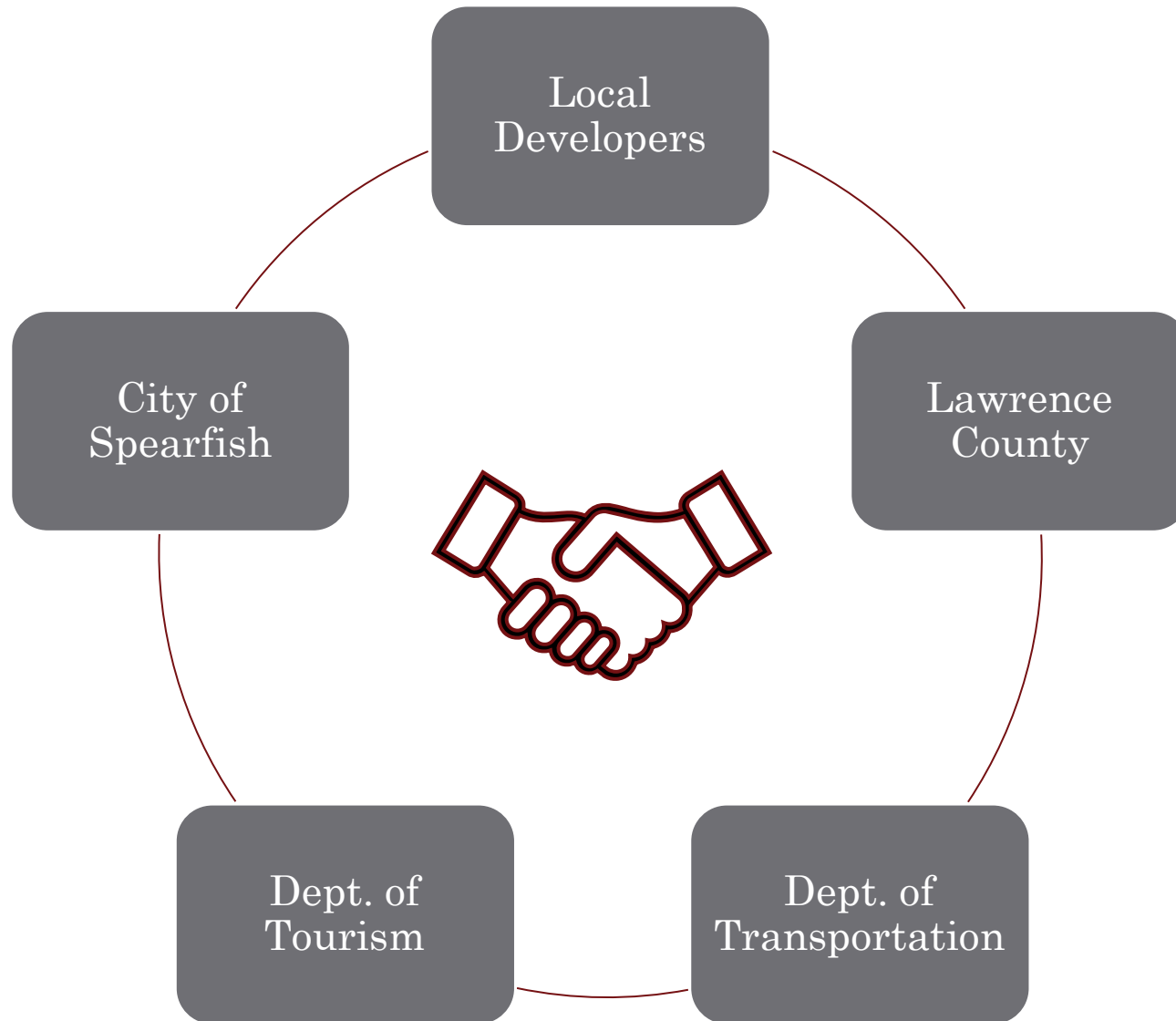
JLG
Architects



Background



Background



Project Goals & Objectives

Determine Possible Site Locations

- Identify potential locations
- Complete traffic analysis
- Develop feasible solutions
- Environmental screening
- Recommendations



Study Advisory Team

“...providing a safe, clean, accessible, and functional place for travelers to rest and rejuvenate. They present a positive impression that is welcoming and delivers educational value for visitors which enhances and extends their stay in South Dakota. The facilities are modern and aesthetically pleasing, while being cost-effective.”

- S.D. Department of Transportation (SDDOT)
- S.D. Department of Tourism
- City of Spearfish
- Federal Highway Administration (FHWA)
- Visit Spearfish
- Black Hills Badlands Tourism Association
- Community Advocates



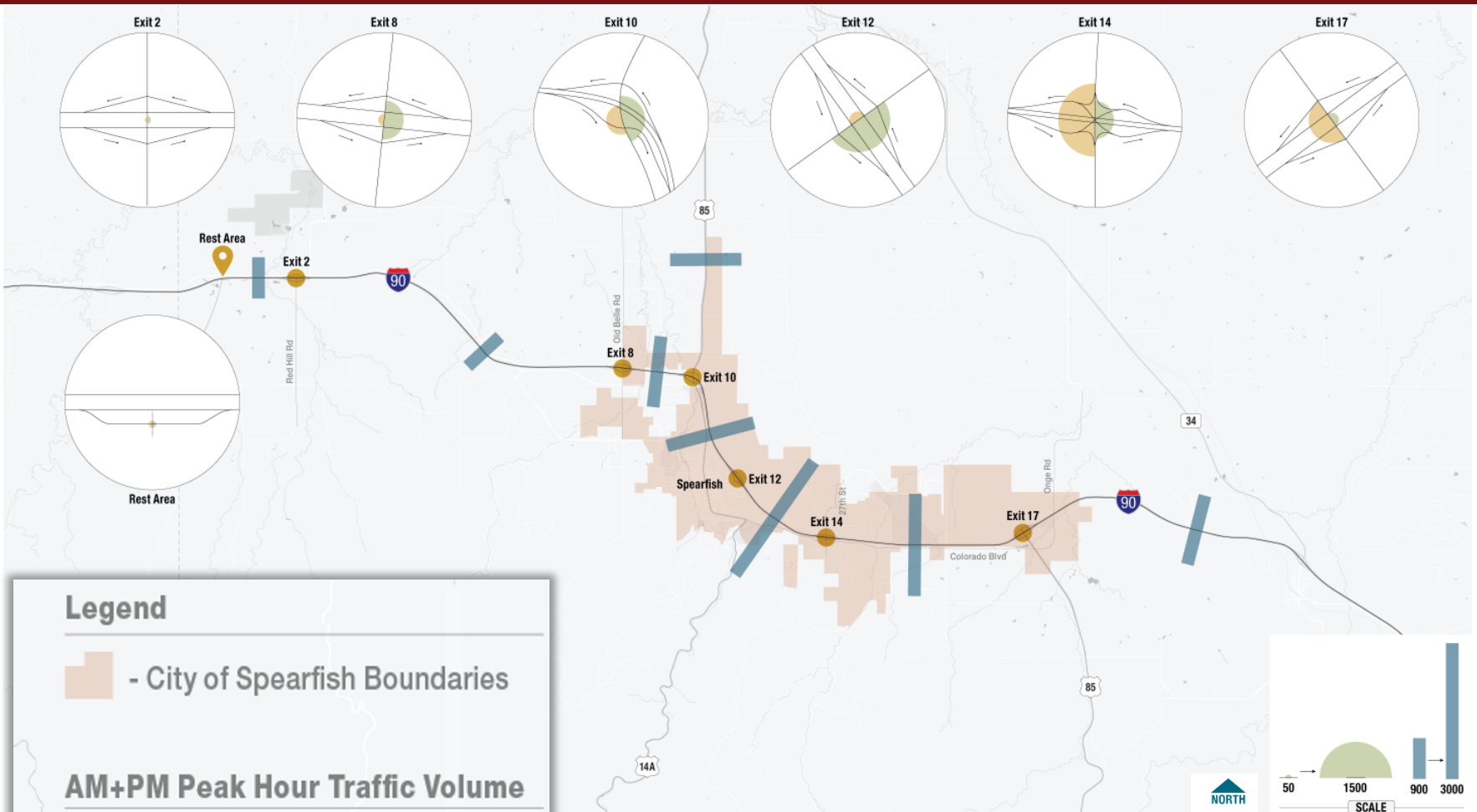
Study Location



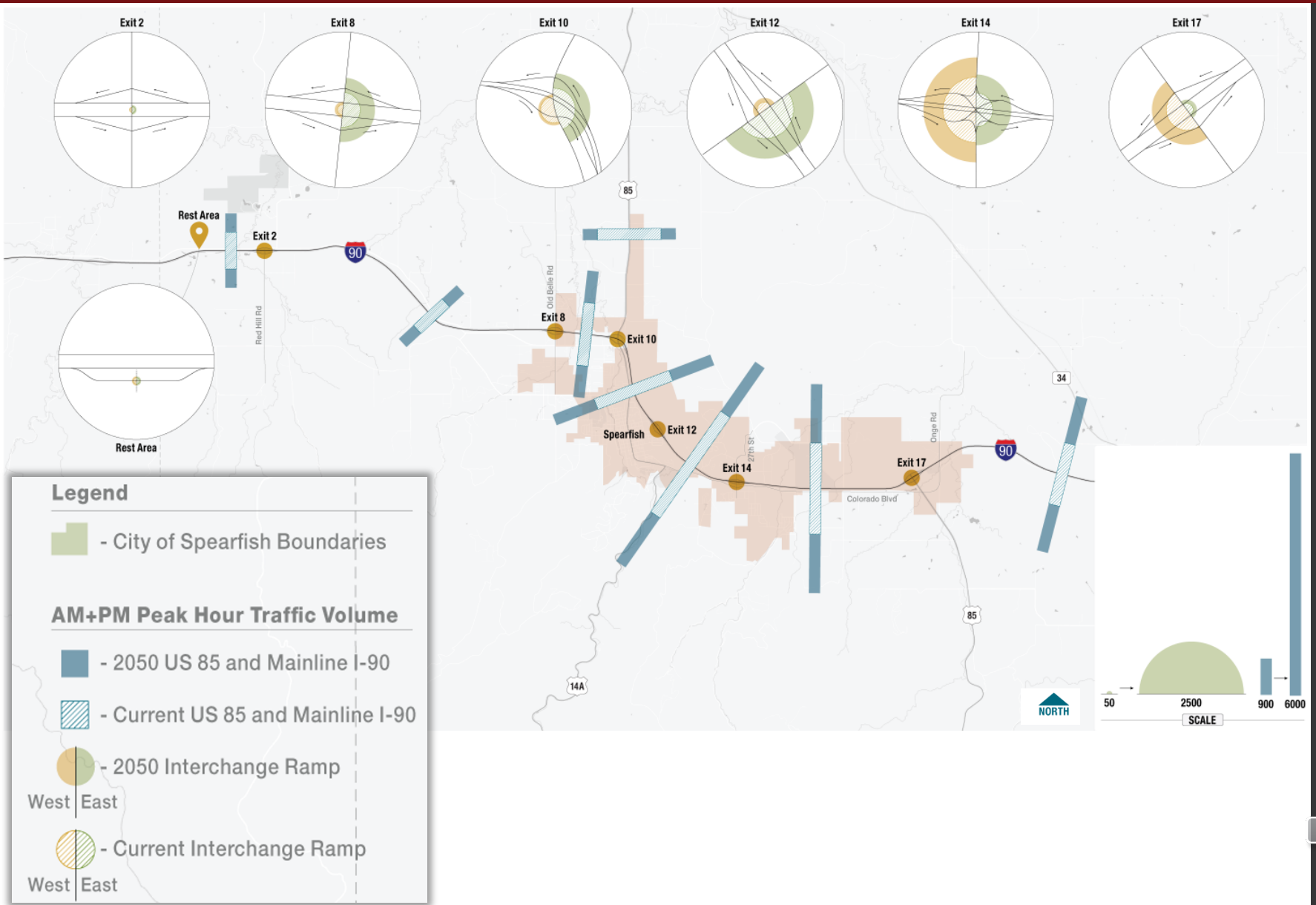
Corridor Constraints



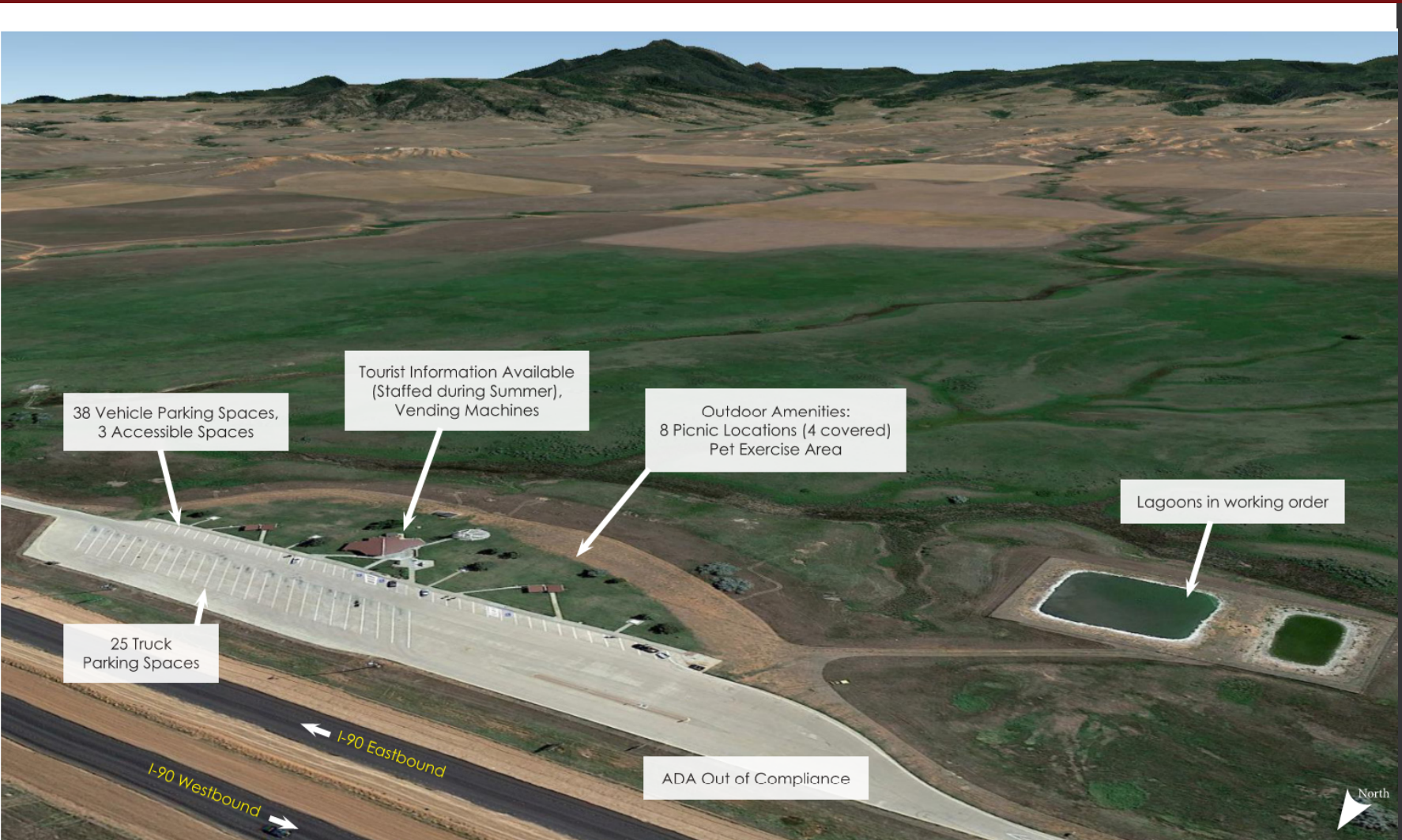
Traffic Volumes (Current)



Traffic Volumes (2050)

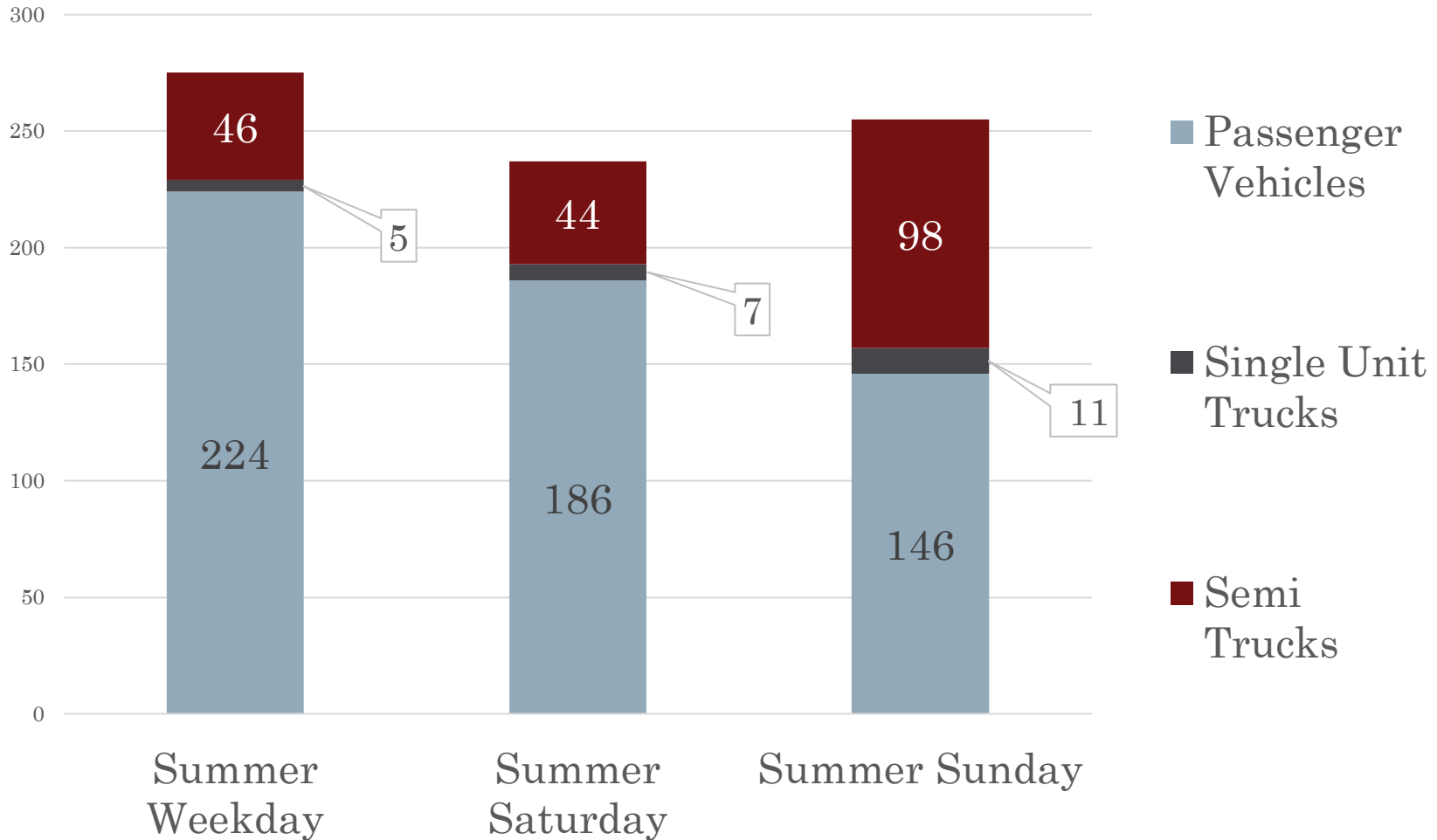


Existing Rest Area



Existing Rest Area

2022 Welcome Center Daily Traffic Levels
(Vehicles Per Day)



Environmental Screening

Document Existing Conditions

- Social and Environmental Resources and Sensitivities
 - Water Resources
 - Wildlife
 - Cultural Resources
 - Right of Way & Properties
 - Land Use, Community and Social Resources/Environmental Justice
 - Utilities/Airports
 - Noise/Air Quality/Visual Aesthetics

Develop Purpose and Need Statement

- Truck and traveler needs
- Traffic Accessibility
- Visibility
- Development Areas/ Future Growth
- Safety

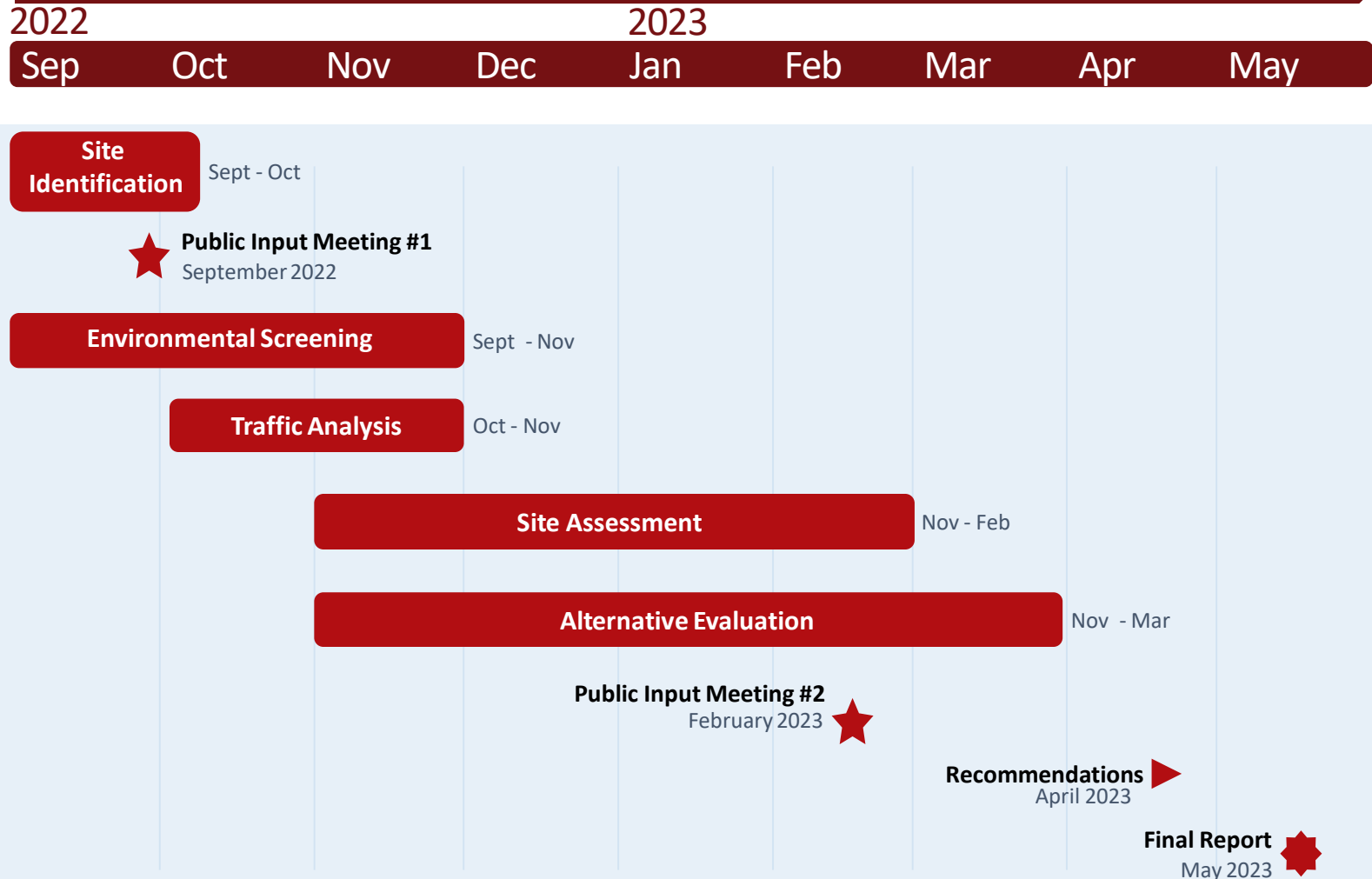
Develop Range of Alternatives

Determine Alternatives to Carry into the National Environmental Policy Act (NEPA) Study



Next Steps

Spearfish Rest Area/Welcome Center Corridor Study



How to Stay Involved

Comments or concerns?

Please let us know.

Submit Comments:

Tonight

- Written (place in comment box)
- Complete our study survey

After Tonight (Comments accepted until October 12, 2022)

- Written (Take a comment card with you)
- Website (www.SpearfishRestAreaStudy.com)
- Contact Us (phone, email, letter)



Thank You!

Thank you for coming.

*Project Staff are available to answer questions
(Stantec, SDDOT, Dept. of Tourism, FHWA)*

Please drive home safely!

Project Contacts:

Aaron Cook, PE

Stantec Consulting
Project Manager

701-541-3200

Aaron.Cook@stantec.com

Tammy Williams, PE

SDDOT
Special Projects Coordinator

605-295-7212

Tammy.Williams@state.sd.us

