



Spearfish Rest Area/Welcome Center Corridor Study

Public Input Meeting #2 | April 5, 2023

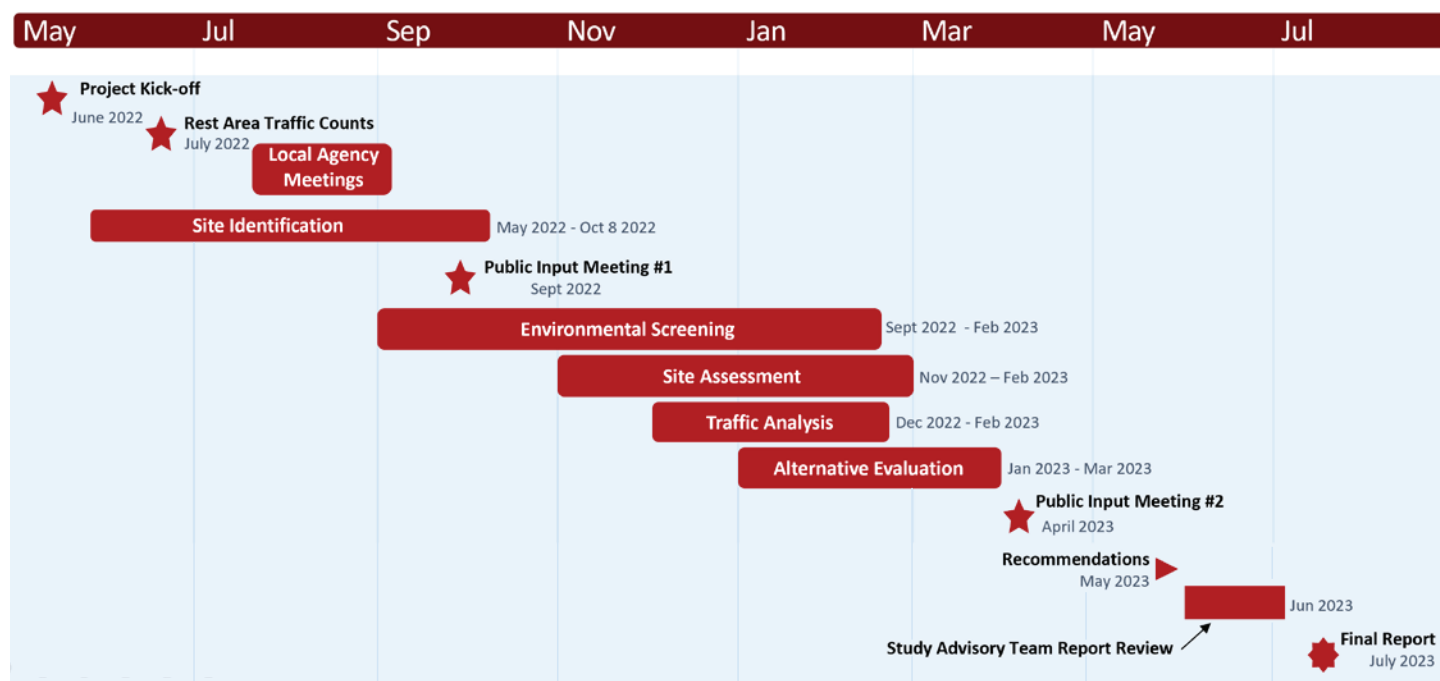
About the Project

The South Dakota Department of Transportation (SDDOT) and the South Dakota Department of Tourism have been working together to revitalize South Dakota's existing Interstate rest areas and welcome centers for the traveling public. Recently, the rest areas at Valley Springs, Homestead (Vermillion), and Wilmot have been reconstructed or remodeled to add a welcome center and update the rest area facilities.

The Spearfish (Northern Hills) rest area is the next rest area facility within the state to be reconstructed. This provides an opportunity to review the existing location, as well as the nearby corridor, for a location that best serves the needs of South Dakota visitors and residents.



Schedule



Contacts

Aaron Cook, Stantec Project Manager
aaron.cook@stantec.com
(701) 989-7102

Tammy Williams, SDDOT Special Projects Coordinator
tammy.williams@state.sd.us
(605) 295-7212

Visit the project website

Materials from the first public input meeting, including the first project handout, can be found on the project website.



www.spearfishrestareastudy.com



Spearfish Rest Area/Welcome Center Corridor Study





Study Progress Updates

- Finalized the Purpose & Need Statement
- Identified the Existing Location (MM1), Exit 10, and Exit 17 to move forward for further analysis.
 - At these locations the following was completed:
 - Environmental screening
 - Conceptual designs (Exit 10 & Exit 17)
 - Utility assessment
 - Future traffic assessment
 - Safety analysis
- Created an evaluation matrix to compare locations

Evaluation Matrix

The evaluation matrix compares the pros and cons of each location based on various criteria. The criteria is given weights to identify which ones are most important. For example, safety was identified as being the most important criteria to consider when comparing locations; therefore, safety, will be given the highest emphasis when determining a recommended location.

■ Most Positive
■ Neutral
■ Least Positive

	Existing Location	Exit 10	Exit 17
Safety	■	■	■
Accessibility	■	■	■
Cost	■	■	■
Impact to Existing Development	■	■	■
Truck Friendly	■	■	■
Impact to Proposed Development	■	■	■
Environmental Impact	■	■	■
Traffic Impacts	■	■	■
Welcoming	■	■	■
Utilities	■	■	■

Concept Designs



Existing Location



Exit 10



Exit 17

■ Floodplains
■ Wetlands
■ Rivers, Waterways