

Premier *Bettendorf* 2020

• The Community Guide to the Greater Bettendorf Area •



SHOPPING • EVENTS • WINING & DINING • ANTIQUES
ATTRACTIONS • LODGING • SCHOOLS • AROUND TOWN

AN ADVERTISING SUPPLEMENT TO
The Dispatch-Argus *Quad-City* Times



Interior *Design* Studio

Interior Design Service, Room Remodels, Reupholstery,
Custom Window Treatments, Furniture & Accessories...
anything WITHIN your four walls.



(563)359-1655 ♦ 1729 State Street ♦ Bettendorf, IA

www.WITHINbyCDI.com

Your first choice matters.

Genesis Medical Center | 1227 E. Rusholme St. | Davenport

When life's unexpected moments happen, **ONLY Genesis** offers the most complete care to handle all your needs.



EMERGENCY & TRAUMA CENTER

The Iowa Quad Cities' most advanced trauma center. The most comprehensive specialty care immediately available in an emergency.



ORTHOPEDICS

Area's only orthopedic hospital. New patient rooms, experienced orthopedic surgeons, and certified nurses.



HEART

Heart surgeons and cardiologists available 24/7 to perform complex heart interventions. Fast heart attack response times.



BIRTHCENTER

The Quad Cities' birthing leader. Only NICU staffed by neonatologists from University of Iowa Stead Family Children's Hospital.



CANCER

An experienced team of specialists and cancer-fighting technology for treatment close to home.



SURGERY

The area's most advanced robotic surgery technology for faster recovery. New surgical suites and outpatient center.



#dedicated

Learn more at: genesishealth.com/firstchoice



TABLE OF CONTENTS

Bettendorf Business Network	6
Bettendorf City Council	10
Bettendorf Online Store.....	40
Citizen Academy	38
Downtown Bettendorf	18
Family Museum	34
Healthcare	14, 16
I-74 Bridge.....	22-23
Iowa State Extension.....	26
Life Fitness Center	21
Mayor's Message	8
Palmer Hills Golf Course	36
Parks, Recreation	37
Public Library	20
Schools.....	24, 25, 27, 28, 30
Service Clubs	17
Waterfront Convention Center.....	12

Premier Bettendorf

Heidi Huiskamp Collins
*Bettendorf Business Network
President*

Jan Touney
Editorial content manager

Elizabeth Stemlar
Advertising sales

Designed and produced
By the Dispatch/Argus/
Quad-City Times
563-383-2200



**TRATTORIA
TIRAMISU**
CUCINA ITALIANA



**CLASSIC
ITALIAN CUISINE**

LUNCH MON.-FRI. 11-2
DINNER MON.-THURS. 5-9, FRI.-SAT. 5-10
CLOSED SUNDAY

1804 STATE ST. • BETTENDORF, IA • 563.355.0749





Scuba Adventures QCA, Inc.

Full Service Dive Shop
Sales-Service-Rentals
Planned Trips-Professional Instruction

1104 State Street, Bettendorf IA
563-324-8771
scubaadventureqca.com

IMAGINE...
2" Solid Steel Balls
Dropping On Your ROOF.
Now Imagine
Nothing Happens.



**Call Us. We'll
Get You Through
The Storm.**



563-723-9940 • 3817 BRADY ST. DAVENPORT
309-738-5550 | **GENERAL CONTRACTING**
ROOFING • SIDING | **RESIDENTIAL • COMMERCIAL**

Your Source For Decorative Lighting



Building or Remodeling?



6118 N Brady Street • Davenport, Iowa
563-293-7794 •



Affordable - Experienced - Service

Your Locally-Owned NEIGHBORHOOD COFFEE



**DUNN
BROTHERS
COFFEE™**

We're known for our thoughtfully sourced beans, fresh, locally-roasted coffee, and delicious made-to-order food. What can we make for you today?

BETTENDORF
787 MIDDLE ROAD
563.345.6099

DAVENPORT
4520 E 53RD STREET
563.345.6022

DAVENPORT ORA
6101 NORTHWEST BLVD.
563.391.9626

www.DunnBrothers.com



PILLAR
BUSINESS SOLUTIONS, INC.

REACHING *goals*, FINDING *balance*

*These are changing times,
let us help you navigate!*

Accounting Advisory Services
Tax Compliance, Planning and Resolution
Strategic Business Consulting

4620 E 53rd St Ste 249 Davenport, IA 52807
563-293-8390

www.pillaradvising.com
Quad Cities | Chicago

Welcome TO BETTENDORF!



Heidi Huiskamp Collins

Dear friends, neighbors and fellow business owners,

The Bettendorf Business Network is very pleased to bring you the 2020 edition of *Premier Bettendorf*, your special guide to businesses, city services and resources that together make the proud City of Bettendorf such a terrific place to live, play, shop and go to school. The year 2020 will certainly go down in the history books. As

I write these words from my home office, I am filled with gratitude for all the acts of kindness and generosity that have taken place in our great city as we all came together to lift each other up and serve those in need. I can tell you about the many concerned neighbors who picked up groceries and prescriptions for the elderly among us. Then there's the owner of a small business who offered to print signs *for free* for restaurants to alert citizens that they were still providing "takeout" during the pandemic. And the small business that published tips on how to best engage on Zoom as many of us have moved to video-conferencing. And the Bettendorf business that used its social media reach to educate all of us on the importance of wearing masks to protect each other. Then there are the city officials among us who worked long hours to keep us all safe and updated with state and federal resources on unemployment insurance and help for small businesses, among other topics. We proved that, as a city, we are better together!

Now that we've turned the corner, let's take advantage of all that Bettendorf has to offer and please use this guide as your tool to do so. Visit our parks and museums. Dine with us. Shop with us. Patronize our service businesses. And, above all, wear your "Bettendorf pride."

Heidi Huiskamp Collins
Bettendorf Business Network President



*For information on this
iconic structure, visit:*



PardonOurProgressQC

I74riverbridge.com

[I74RiverBridge](#)



Pardon our Progress

Quad Cities | Downtown Moline | Downtown Bettendorf

A message brought to you by the City of Bettendorf and the Downtown Bettendorf Organization

BUSINESSES

YOU
SHOULD KNOW
IN 2020!

AN ADVERTISING SUPPLEMENT



John Wheatley, owner of L&W Bedding, shows off the quality workmanship that goes into his mattresses. CONTRIBUTED PHOTO

In the homologized corporate world of big box stores and overseas customer service, L&W Bedding stands out as refreshingly old fashioned. Their Illinois showroom, in Moline's Uptown neighborhood at 1211 16th Avenue, is fittingly located in a building that housed a mom-and-pop grocery store back in the early 1900s.

From the first minute, you are transported back in time. The walls are adorned with a vast array of memorabilia from the golden era of Hollywood to the original Little Kings restaurant menu. Portraits of John Wayne, Marilyn Monroe, golfer Jack Nicklaus and Elvis all keep watch over the 13 models of handmade mattresses offered by L&W. Some days you are even greeted by the sound of the owner and founder, John Wheatley, sitting at his sewing machine carefully making a cover for one of L&W's made to order beds.

"It's old fashion stuff, and that's what we do with our mattresses. I learned how to build mattresses in the late 70s and all through the 80s. In about 1988 or so, I went out on my own. I bought my

own sewing machine, put it in my garage, and I started making beds for the hospital and nursing homes," said Wheatley.

After a year of working out of his garage, he opened up his Moline shop and has been working non-stop making his line of top quality mattresses.

Service and quality are the top priorities at L&W. They also never have "big discount sales" because they don't mark-up the beds in the first place just to discount them. "I feel like I'd be lying to my customers if I did that."

The first thing anyone who meets Wheatley will notice is his passion for his craft. His mattresses are not produced in some impersonal factory which cuts corners on quality to stretch profits. He and employee, Jose Beltran, are artisans. No detail is spared when they are designing and constructing an L&W mattress.

According to Wheatley he had one complaint. After coming to the customer's home personally to figure out the problem, he realized that the mattress was breaking down because the

customer was abusing it by regularly walking on it to dust the ceiling fan.

In contrast, "mattress in a box" manufacturers, according to John, have a 30-percent return rate on every mattress they sell. And returns usually mean it ends up in the landfill or as a donation to a local charity.

"The beds nowadays are basically mass-produced. They're not "flippable" and they don't sit on a boxed spring. I think in the late nineties. The big mattress companies started selling something called a foundation," said Wheatley.

The foundation is designed to look like a traditional box spring but doesn't offer any springs causing the mattress to wear-out twice as fast.

"I'm probably the only person in the Midwest that still sells box springs. You could drive from here to Chicago, here to St. Louis and here to Kansas City and not find a traditional box spring."

When you come into one of L&W's two Quad-Cities showrooms (Moline and Bettendorf) John or one of his employees will walk you through



Meet the Quad Cities Best Mattress Store!

each aspect of how their beds are made and answer every question you could possibly think of. They will show you how the box spring works in conjunction with the mattress. They will show you how the mattress is constructed.

"Why are we trying to make beds last for a long time? Because we can still do it. If Sealy wanted to, they could make a bed that would last for a long time without a problem, but they just elected to not do it because they make more money this way," said Wheatley.

"They intentionally designed their beds to fall apart. They're just designed not to hold up, so instead of buying two or three beds in a lifetime, you're going to buy six or seven possibly more."

L&W beds are made to last and keep their shape for a long time. They not only outdistance the competition on quality but they beat the competition on customer service.

"We are a local mom and pop shop so we can deal with any potential problems. We deal with the customer directly."

Wheatley arms his customers with knowledge before they spend a dime on one of his mattresses. "Before you give me 10-cents and you decide which bed you're going to buy, you're going to know about every component in it, and how it works to give you a great night's sleep. We show each and every

customer, why this bed is going to hold up and last."

Sitting on one of his beds he proudly shows off how the mattress and the box spring work together. He then gets up and walks into another room to show you what the competition's mattress and "fake box spring" do when you sit on it. The energy from the mattress has no place to go causing the springs to eventually tear through the materials which make up the bed.

Next, with unbridled energy and enthusiasm for his product, he explains how an L&W pillow top mattress is a "real pillow top" and how it is constructed versus the box store competition model.

Wheatley's knowledge of bed construction is encyclopedic and he shares it all for free. Even if you don't buy a bed from him he wants consumers to share in his wealth of experience.

"We try to provide an education. We are building a high-quality bed, like mattress companies used to do. We are an old fashioned bedding company. So that kind of goes back to those pictures on the walls. You start looking at the pictures from the old days and you just think about the quality from days gone by. That's what we are all about."



Stop by L&W Bedding today and come home to comfort every night.

3357 Devils Glen Road, Bettendorf | 563-459-0101 | 1211 16th Ave., Moline | 309-762-6019

Follow us on Facebook or visit www.lwbeddingqca.com

Mayor's MESSAGE

Hello and Welcome!

Bettendorf, Iowa, is a progressive city of approximately 35,000 residents with many more people coming here regularly to work, visit, and play! We are proud to be part of the Iowa/Illinois Quad-Cities. We strive to provide our citizens and visitors with a quality of life and services second to none.

Pardon Our Progress as the new I-74 River Bridge is being built over the Mississippi River in our city. This new bridge will provide everyone with a better traveling experience as well as being an exciting Downtown Bettendorf destination. Many bicycle and pedestrian facilities are included in the project, including a multi-use path along the bridge. I invite you to check it out when it's complete!

The TBK Bank Sports Complex lives in the northern part of our city and is one of the largest sports complexes in the Midwest! Built in 2019, the 75-acre interactive complex is comprised of an indoor and outdoor sports complex and a two-story family entertainment center known as High 5 Lanes & Games. You will find basketball courts, volleyball courts, soccer fields, baseball fields, fitness center, bowling lanes, laser tag, escape rooms and more at TBK. Surrounding the sports complex are some of the most unique shopping experiences and delicious restaurants our city has to offer. This area will entertain your family and friends for days.

If you are a visitor, we hope that you will take some time to explore what Bettendorf has to offer. We have 22 city parks which are filled with playgrounds, ball diamonds, basketball courts, disc golf courses, hiking trails, DekHockey, picnic shelters, and so much more. The Learning Campus houses the Bettendorf Public Library, award-winning Family Museum, and Faye's Field. Middle Park is home to Splash Landing for summer water park fun or Frozen Landing for winter ice skating. Our newest park, the Jetty Park, sits on the Mississippi River and provides a front row seat to view the building of the I-74 bridge and the nature of the river.

Bettendorf's greatest asset is its people. Our residents share their passion for our city, and we work together to create shared values and vision for our community. Whether you are here to work, visit, or play you will be safe and respected in our community, and I hope that you enjoy this special place I call home – Bettendorf, Iowa.

Sincerely,
Robert S. Gallagher, Mayor



Bettendorf
a premier city



**Abbey
Carpet Gallery**
Flooring & Interiors



Carpet • Hardwood • Laminate • Tile
Luxury Vinyl • Area Rugs • Window Treatments

Mention this ad to receive
\$100 OFF*
your purchase of \$999 or more.
FREE MEASURES & ESTIMATES

563-391-2593 • 4811 NORTH BRADY STREET
DAVENPORT.BUYABBEY.COM

*Offer not valid on sale, clearance or prior purchase.

IOWA MASONIC

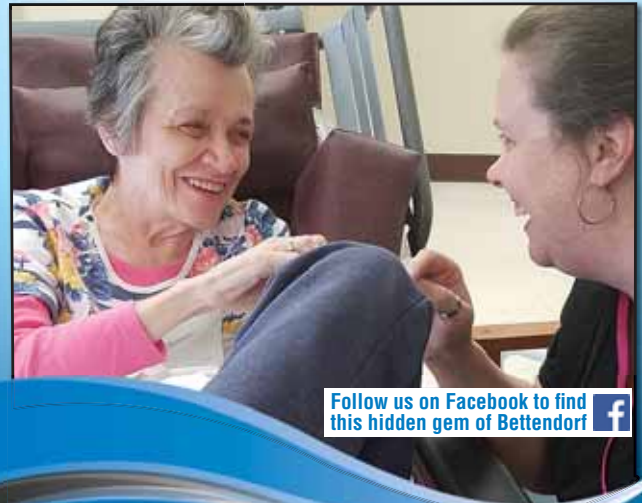
Compassion. Commitment. Community.

2500 Grant Street • Bettendorf, Iowa 52722

**Call Rebecca Wiley to schedule your
tour today at 563-359-9171**

**No Masonic
Affiliation
Needed!**

- Long-term care
- Short-term rehabilitation
- Secured memory unit
- Independent living



Follow us on Facebook to find
this hidden gem of Bettendorf 



3456 Holiday Court,
Bettendorf, IA 52722
www.LiveWellIQC.com

- CHIROPRACTIC
- MASSAGE
- ACUPUNCTURE
- CUPPING

HEALTH CARE FOR THE WHOLE FAMILY

- Convenient Location • Friendly Staff

Welcome to Live Well!

*Mention this ad for \$10 off
massage or acupuncture.



Dr. Julie Meyers, DC
Diplomate in Chiropractic Pediatrics
Cert. in Chiropractic Acupuncture



Dr. Bret Grimes, DC
Advanced Activator Certified
Cert. Myofascial Cupping



Bettendorf CITY COUNCIL



Members of the Bettendorf City Council, from left, Alderman Jerry Sechser, 1st Ward; Alderman Frank Baden, At-Large; Alderman Bill Connors, 3rd Ward; Alderman Scott Webster, 5th Ward; Mayor Robert S. Gallagher; Alderman Scott Naumann, 2nd Ward; Alderman Lisa Brown, At-Large; Alderman Greg Adamson, 4th Ward.

Bettendorf City Council meetings are the first and third Tuesday of the month at 7 p.m. at City Hall, 1609 State St. Committee of the Whole meets the evening prior to the council meeting at 5 p.m.





THE original COOKIE BOUQUET COMPANY



3382 Middle Rd. Bettendorf, IA 52722 • 563-332-4311 • www.cookiesbydesign.com



The **TACO PIZZA ORIGINATOR**

2430 Spruce Hills Drive, Bettendorf
(563) 359-5457 • happyjoes.com

Now delivering ice cream! ➔






COFFEE
HOUND

www.qccoffeehound.com

3 DOOG FLIGHT!

**PROGRESSIVE DISCOUNTS
IF YOU VISIT ALL OF OUR PUPS!**

As you visit each location in order
your discounts increase! Keep this ad with
you to present at each stop for validation
with a special stamp from our barista.



1

OFFICIAL
STAMP

HOME STORE
3451 Devils Glen Road
Bettendorf, IA

**10% OFF
ORDER***



2

OFFICIAL
STAMP

TBK SPORTS COMPLEX
5141 Competition Drive
Bettendorf, IA

**25% OFF
ORDER***



3

OFFICIAL
STAMP

BETT. PUBLIC LIBRARY
2950 Learning Campus Dr.
Bettendorf, IA

**50% OFF
ORDER***

*Offer expires ends 12/31/20. Discount applies to drinks only and no food or merchandise. Offer not good in conjunction with any other discounts.

Waterfront Convention Center

The stunning architecture and décor of this state-of-the-art facility makes it the perfect place for your next meeting, convention, banquet, or reception. Located in downtown Bettendorf, the Quad-Cities Waterfront Convention Center is the area's epicenter for events. Our spacious banquet facilities can accommodate groups from 50 to 1,500. We're also connected by skywalk to one of the Quad-Cities' premier casinos, the Isle Casino Hotel Bettendorf.

Host your next event at the Quad-Cities Waterfront Convention Center. For information on our services, please call the Sales Office at 1-800-724-5825 or 563-344-2697, or send an email to leah.allen@islebettendorf.com, or fill out an online request information form.

Amenities:

- Easy access to local Quad-Cities casinos, restaurants, shops, and the Mississippi River.
- 25,000 square feet of meeting space with up to eight private meeting areas.
- Business friendly with charging stations, wireless internet access, cell tower on site, video conference capabilities and social distancing plans in place.
- Cutting edge technology with controls for projection screens, microphones, and lighting.
- Main area can be combined with the ballroom to seat up to 1,500 or partitioned off in different ways to allow for smaller events and the use of meeting rooms.



- Ability to accommodate multiple events simultaneously.
- Connected to an additional 15,000 square feet of meeting space.

WHAT DO YOU GET FOR

\$30 /MO.

WITH 4 LINES?

A

UNLIMITED DATA

B

FAST SPEEDS

C

STRONG SIGNAL

D

ALL OF THE ABOVE



Wireless Central, an Authorized Agent of U.S. Cellular

Bettendorf	Davenport	Rock Island	Mount Pleasant	Kewanee	Silvis	West Burlington
3388 Middle Rd. 563-332-5500	3502 W. Kimberly Rd. 563-386-8887	1733 30th St. 309-788-6800	100 N. Main St. 319-385-2115	624 Tenney St. 309-856-8100	1600 John Deere Expy. 309-796-7000	Westland Mall 319-754-8000

Store Hours:

Mon.-Fri. - 9:00am - 7:00pm • Sat. - 9:00am - 7:00pm • Sun. - 12:00pm - 5:00pm

Auto Pay/Paperless Billing and credit approval required. Data on the Unlimited Basic Plan may be temporarily slowed in times of congestion, and data may be slower than other traffic. Additional terms apply. See uscellular.com for details.

Things we want you to know: Customer Service Agreement required. Roaming in Mexico/Canada: Pay-as-you-go data rates apply after using plan package allotments. See uscellular.com/services/international for rates. Unlimited International Text Messaging: Send and receive unlimited international text messages at no additional cost when using your phone within the United States. A Regulatory Cost Recovery Fee (RCRF) applies; this is not a tax or government required charge. Additional charges, taxes, terms, conditions and coverage areas may apply and vary by plan, service and phone. All products, trademarks, trade names and service names are the property of their respective owners. Limited-time offer. Prices, plans and terms are subject to change without notice. Limitations and exclusions apply. See store or an associate for details or visit uscellular.com. ©2020 U.S. Cellular



At Ascentra,
Great Rates and **Great Service**
go hand-in-hand.

**Talk to us today about making your financial plans a reality,
we have many ways to help:**

- ✓ Mortgages
- ✓ Auto Loans
- ✓ Personal Loans
- ✓ Home Equity Loans
- ✓ Construction Loans
- ✓ and More!



563-355-0152 • 800-426-5241 • ascentra.org

BETTENDORF • CLINTON • DAVENPORT • MOLINE • MUSCATINE



Federally Insured
by NCUA.





The Summit, a senior living development, is under construction in Bettendorf at 53rd Avenue and Middle Road and is scheduled to open in 2021. This community for older adults is part of WellSpire, a collaborative partnership of Wesley Life, Johnston, Iowa, and Genesis Health System.

GENESIS HEALTH SYSTEM IN BETTENDORF ADAPTS TO CHANGE

The COVID-19 virus outbreak diverted us all from the routine in many phases of our lives, including health care.

The “new normal” of health care will focus on safety, convenience and access to care outside traditional hospital and clinic settings.

One change in health care during the outbreak was rapid growth in the use of telehealth services. Patients can quickly schedule an online appointment with a Genesis primary care provider via an online platform.

During the outbreak, patients reacted favorably to appointments made through Genesis Convenient Care Virtual at www.genesishealth.com/virtual.

Genesis is also adding convenience for patients who prefer to use Genesis clinics in Bettendorf. Curbside check-in for appointments is now available in addition to a pre-visit screening. Call before your scheduled appointment.

At physician offices, precautions have been put into place to separate healthy and ill patients. Patients will be escorted directly to a treatment room

rather than to a waiting room.

The newest Genesis clinic location in Bettendorf is Genesis Health Group, Woodlands, Bettendorf, 53rd Avenue, which opened in April 2019. The location has primary care providers, a pediatric practice, Genesis Convenient Care by Reservation, lab and basic X-ray services.

“We know a large segment of patients are now seeking convenience and access close to where they live or work,” said Kurt Andersen, M.D., executive medical officer of Genesis Health Group. “That trend is only going to be stronger in the future.

“To best serve our patients, Genesis continues to expand our services and continues to look at additional opportunities in Bettendorf.”

Outpatient services close to home in Bettendorf include:

Convenient Care walk-in clinic; Convenient Care By Reservation; the Center for Digestive Health; Genesis Diabetes Care Center; family practice; home health; the Clarissa C. Cook Hospice House; imaging; lab; obstetrics/gynecology; pediatrics; the Genesis Outpatient Pediatric Therapy

(GOPEDS) clinic; physical therapy; Genesis Spine and Joint Health Center; sports medicine; and, outpatient surgery.

Genesis HealthPlex, Bettendorf, which opened in 2014, gives patients “one-stop” access to health services previously requiring multiple stops. Genesis HealthPlex locations in Moline, Bettendorf and Davenport feature primary and specialty care, Genesis Convenient Care, and imaging and lab services.

Online appointment times, care by reservation and virtual care are available at www.genesishealth.com/checkin.

Comprehensive senior living options are the next health-related Genesis development in Bettendorf.

Under construction is The Summit, a senior living development scheduled to open in 2021. This community for older adults is part of WellSpire, a collaborative partnership of Wesley Life, Johnston, Iowa, and Genesis Health System. It will feature independent living, assisted living, memory support, short-term rehabilitation and long-term nursing care.

Claim Your Place in Line!



WellSpire is a partnership of
WesleyLife and Genesis Health System.

Construction is under way
at The Summit of Bettendorf!

To be completed in summer 2021,
The Summit will offer second-to-none
amenities and a focus on health and
well-being. With 13+ floor plans,
multiple dining venues, engaging
outdoor spaces, and a fitness center
with a full-time team, you can choose
the lifestyle that's right for you!

Call Erica at (563) 200-2484.

Reserve your apartment with a fully
refundable priority deposit today.



4699 NW 53rd Street, Bettendorf • Wesleylife.org/The_Summit



Carrie Lamb
MORTGAGE LOANS

CONTACT US FOR ALL YOUR FINANCING NEEDS!



Dean Kraus
COMMERCIAL LOANS



Member
FDIC

www.bankorion.com



1855 Middle Rd • Bettendorf, IA 52722 • 563.345.6011



The new UnityPoint Clinic – Express is located at 5185 Competition Drive in the rapidly developing commercial district near the TBK Bank Sports Complex.

UNITYPOINT CLINIC – EXPRESS IS NEW MODEL OF URGENT CARE

Being sick and needing care fast can be frustrating. Now, UnityPoint Clinic® is making it easier than ever to get well with *Express*.

UnityPoint Clinic – Express is a new model of Urgent Care in the Quad-Cities that provides people of all ages a more convenient and personalized care option for them and their loved ones. The new clinic near the TBK Bank Sports Complex in Bettendorf focuses on a reimagined, time-saving process designed to enhance the walk-in care experience.

“We are thrilled to offer this new service in the Quad Cities. Our UnityPoint Clinic – Express offers high quality care with the goal of getting patients in and out the door in about 30 minutes. These new clinics provide fast, quality care with X-ray, lab services and medications all under one roof,” says Matt Behrens, vice president of

Clinic Operations, UnityPoint Clinic.

The UnityPoint Clinic – Express model of care is concierge-style with a goal of door-to-door service in around 30 minutes. UnityPoint Clinic – Express features specially trained clinical care attendants who greet people entering the clinic and remain with them throughout the visit working with a medical provider for diagnosis and treatment.

“People are busy – work, school, kids’ activities and everything else that fills our day make it challenging to find time for health care,” says Behrens. “We want to offer another option to meet our patients’ needs and help them get the care they need to feel better and get back to their lives.”

There are 30 commonly used prescription medications available on-site to help eliminate the need for an extra visit to a pharmacy. People may also

reserve their spot online at unitypoint.org to shorten the amount of time spent at the clinic.

“At UnityPoint Health, we know it’s all about the little things and if we can help make someone’s day a little brighter when they may be feeling their worst, that’s when we know we’re living our mission,” says Bob Erickson, president and CEO, UnityPoint Health – Quad Cities/Muscatine.

UnityPoint Clinic – Express is an additional care option to UnityPoint Clinic’s current Express Care location in Bettendorf and UnityPoint Health – Trinity Bettendorf. Visit the new UnityPoint Clinic – Express at 5185 Competition Drive, Bettendorf, Iowa. Hours are 8 a.m. to 8 p.m. every day of the year. UnityPoint Health – Trinity Bettendorf, 4500 Utica Ridge Road, is Bettendorf’s only hospital.



Members of the Bettendorf Kiwanis Club go shopping in November for groceries at Hy-Vee for their annual Thanksgiving basket distribution.

Bettendorf Kiwanis Club

“A global organization of volunteers dedicated to changing the world, one child and one community at a time.” That’s our motto and our mission. We are simply a small branch of the tree that is Kiwanis. We pride ourselves in helping the Quad-City metro area with our time, talents and resources. You can, too, if you join us!

We are dedicated citizens of the Quad-Cities from all walks of life. Some of us are young professionals; some are hard-working business men and women. Some of us are even enjoying retirement. But the one thing that unites us is our strong Kiwanis spirit to give back to the community.

We’ve given our time and talents to these organizations in recent months: Kids Against Hunger; Café on Vine, Thanksgiving basket distribution, and many more. We’ve given our financial resources to the following QC organizations in the past year: Bettendorf Park Board’s Summer Program, high school after-prom committees, Rick’s House of Hope, Shooting Stars, Hand in Hand and many more.

Our weekly meetings are held on Tuesdays from noon to 1 p.m. at the Hy-Vee Club Room, 2900 Devils Glen Road, Bettendorf. Enter via the west door and go upstairs.

Bettendorf Rotary Club

To give life to the Rotary International motto, “Service Above Self,” the 100 men and women who are members of the Rotary Club of Bettendorf work to improve communities from Bettendorf and the Quad-Cities to Iowa and Illinois and internationally.

In the past year, Bettendorf Rotarians have:

- Awarded \$30,000 in grants to 15 nonprofit organizations that aid disadvantaged youth, help people with special needs, promote fire safety, feed the hungry, protect domestic abuse survivors and celebrate the arts. Yet this year, we plan to award another \$15,000 special impact grant.

- Given a dictionary to every 4th grader in Bettendorf’s public and private schools

- Funded Pay It Forward community-service projects in 5th grade classes

- Awarded scholarships to city high school and community college graduates

- Paid for students from

Bettendorf public high schools to attend the weeklong Iowa Rotary Youth Leadership Academy

- Supported the Genesis Pediatric Therapy Group by buying and installing sensory-path stickers to guide kids with disabilities through exercises

Bettendorf Rotary meets every Wednesday noon at Tanglewood Hills Pavilion and welcomes anyone who wants to make a difference in the community. Members include business, professional and local government leaders. For more information – or to visit a meeting as a guest – please contact bettendorffrotary@gmail.com.



Bettendorf Rotarians worked one Saturday in January to install stickers on floors and walls of the Genesis Pediatric Therapy Group to guide kids through exercises to learn the alphabet, practice use of numbers and more.

Bettendorf Lions Club

In 1925, Helen Keller challenged Lions Club members to become “knights of the blind,” a challenge that remains at the core of our club to this day. The Bettendorf Lions Club was organized in 1942. The club’s motto is “We Serve.”

The Bettendorf Lions Club participates in a program called Iowa KidSight, in which we screen over 900 preschool children in the Bettendorf area for vision problems each year. We host an open vision screening at the Bettendorf Public Library in late spring.

To support our club’s activities, we host three major fundraisers during the year – a chili supper, a trivia contest, and pancake dinner/breakfast. These fundraisers help us support the vision screenings as well as scholarships to area high school graduating seniors, and other club activities.

Our service projects include assem-

bling food baskets distributed at the holidays; helping with the First Day Project (school supply drive); selling bottled water at Bettendorf High School’s graduation ceremony to benefit its fine arts department; and, as always, providing eye exams and eyeglasses for those in our community who would not otherwise be able to afford them.

We collect used eyeglasses and hearing aids, which find their way to individuals who need them, including those in Third World countries. Our club takes part in the Bettendorf High School’s Rhythm on the Riverbend Show Choir Competition by making pancakes to be served during breakfast on the day of competition. In the early spring, we take part in Earth Day, including cleaning area parks, helping those in need with yard work, and planting trees.

In memory of club members who have



Members of the Bettendorf Lions Club participate in the annual Fourth of July parade.

passed away, you will find a park bench located along the Duck Creek bike trail close to the lagoon at Middle Park, as well as a bench at the pickle ball court at Kiwanis Park in Bettendorf, both dedicated in memory of the members’ many years of service and love of the bike trail and the game.

Dinner meetings are held on the 2nd and 4th Thursday of each month at 6:15 p.m. at The Fountains, 3726 Thunder Ridge Road, Bettendorf.

Downtown Bettendorf Organization

BY JAN TOUNEY

Driving into Bettendorf from the east on Grant Street, the changes to the downtown skyline are visible from miles away as the first basket-handle arch on the new Interstate 74 Bridge looms over the landscape.

It's one of only several notable additions to the look of downtown Bettendorf over the past two years, as substantial investment is continuing. That includes the new Ascentra Credit Union home office building at 2019 Grant St., The Bridges loft apartments at 1501 State St., and now under construction nearby, a four-story office complex to be anchored by the Midwest Division of TBK Bank. The 65,000-square-foot building will also include retail space and a restaurant.

Total investment in the downtown exceeds \$12 million for 2019-20, according to Ryan Jantzi, executive director of the Downtown Bettendorf Organization.

"As we see more development in the core around the bridge, we will eventually see a domino effect as new development and investment is made to the east and west of the bridge along State and Grant streets," he said. "A downtown needs three things to flourish. We need people living in our downtown, people working in our downtown, and people visiting our downtown. Downtown Bettendorf is building an infrastructure to complement all three."

The Downtown Bettendorf Business Women looks for opportunities to get the word out about doing business downtown. The group held a successful event with The Bridges' residents to introduce them to the shops and services that are right in their neighborhood.

Among the public improvements planned downtown this year are two new city parking lots, at 15th and State streets and 18th and Grant streets. Additional parking is crucial, Jantzi said, for current businesses, future investments and events downtown.

The Downtown Bettendorf Organization will receive its first revenue from a new SSMID, or Self-



The new Ascentra Credit Union home office building is a prominent part of the downtown Bettendorf landscape.



The Jetty Park alongside the Mississippi River trail near the Isle of Capri complex offers great views of the construction of the new Interstate 74 Bridge. The sculpture "Flight Path" is one of many pieces of public art in the city.

Supported Municipal Improvement District, in the fall of 2020, in addition to annual support it receives from the Isle of Capri and the City of Bettendorf,

he said. Tentative plans for Fiscal Year 2021 call for more beautification efforts; exploring the addition of pocket parks; investing in safety, holiday and decorative lighting; and marketing strategies to promote the downtown.

Jantzi invites residents and visitors alike to come downtown and check out the many businesses and services that are available.

"We are open for business and are changing by the day," he said. "Home improvement, interior decorating, kitchen and bath, closet design and installation, and home audio and visual equipment are all a part of our core industries. We also have several beauty salons, eateries, wellness businesses, insurance providers, bars, chiropractors, financial planners and a variety of other small businesses."

The new Jetty Park on the Mississippi River bike trail near the Isle of Capri complex offers great views of the new bridge construction, too, Jantzi added.

"The renaissance is just getting started and we will continue to see our downtown grow over the coming years," he said.

Catch up on news and other happenings in downtown Bettendorf on Facebook @ [downtownbettendorfororganization](https://www.facebook.com/downtownbettendorfororganization).

WE EMPOWER
WOMEN'S
FINANCIAL FUTURES

WHO YOU
INVEST WITH
MATTERS

HUIKAMP  COLLINS
INVESTMENTS, LLC



2209 Falcon Ave
Bettendorf, IA 52722
563-949-4705
hhcinvestments.net

Bettendorf PUBLIC LIBRARY

The Bettendorf Public Library is your source for books, magazines, music, audiobooks, DVDs, and so much more! With your Bettendorf Public Library card, you have access to our collection of over 200,000 items as well as checkout privileges at other Iowa libraries.

The library has free Wi-Fi, computers and printers available for use. We also have comfortable seating and study areas throughout, including private study rooms and a reading area with a cozy fireplace.

Can't make it to the library? No problem! We offer digital audiobooks, ebooks, magazines and music for patrons on the go. You also have access to career services, test prep, language learning, live tutors and subscription research databases — all online and all free. Our latest online resource, Brainfuse HelpNow, offers live tutoring services and an online writing lab. Visit our website at www.bettendorflibrary.com to access library services 24/7/365.

The Bettendorf Public Library is the go-to place for free programming throughout the year for babies, children, teens, and adults. Our Winter Reading Program in January/February as well as our Summer Reading Program in June/July encourage and promote reading for all ages.

For children, we offer Storytime Monday through Friday where they can enjoy stories, songs, finger plays and action rhymes. Our Tales for Tots program for children zero to 3 years old includes simple stories, music and movement to help increase early literacy skills. Kids can take part in craft and science sessions after school on Bettendorf and Pleasant Valley Early-Out Wednesdays. On Saturdays, we feature programs that promote creative play. Visit our online calendar to see special programs throughout the year, including everything from visiting performers to book discussion groups.

We also host adult programs and classes for a variety of interests. Some of our programs include book discussion groups, outdoor concert series, a music



Sally Haugen engages children during Storytime.



Left: The Celtic band Greenmore performs at one of the Community Connections programs at the library. Right: A fireplace enhances a cozy reading area for library visitors.



discussion group, lectures, reading programs and more. One of our more popular offerings is the Creation Studio series. Creation Studio is hands-on programming inspired by the STEAM initiative (science, technology,

engineering, arts and math). We offer Drop-In sessions for quick and easy projects, Workshops for more in-depth learning, and Residencies to showcase artists, artisans and craftspeople as they create their work.



Bettendorf Public Library
2950 Learning Campus Drive
Bettendorf, IA 52722
Phone: 563-344-4175
Fax: 563-344-4185
info@bettendorflibrary.com

Open hours

Monday-Thursday: 9 a.m.-9 p.m.

Friday-Saturday: 9 a.m.-5:30 p.m.

Sunday: 1-5 p.m. between Labor Day and Memorial Day weekends.



Group exercise classes (above) and pickleball are popular activities.



Life FITNESS CENTER

Bettendorf's Life Fitness Center is one of the largest facilities in the area and offers a wide variety of amenities, including an indoor track (8 laps to a mile), three indoor tennis courts and three basketball courts, an indoor lap pool, a variety of cardio and weight equipment, and so much more!

We offer affordable rates for all ages and offer 1-6- and 12-month memberships. Stop by for a personal tour of the facility, free guest passes, and information about our fitness classes. LFC offers FREE pickleball to members. We partner with Silver Sneakers, Silver and Fit, and My Renew Active fitness programs. Check your insurance to determine if you qualify.



Life Fitness Center

2222 Middle Road
Bettendorf, IA 52722
563-344-4119
www.lifefitnesscenter.org




QUAD CITY DUDES MOVING COMPANY

Call 563-484-5263

- Loading Help • In-Home Estimates
- Local & Long Distance Moves • Large Items

Mention this ad for 10% off!

www.quadcitydudesmovingcompany.com



May 6, 2020: The view from over the top of the westbound basket-handle arch after the keystone was set.

Taking shape

First basket-handle arch on Interstate 74 Bridge shows Bettendorf what its transportation future looks like.

BY JAN TOUNEY

Bettendorf residents no longer have to rely on a schematic design to imagine what the new Interstate 74 Bridge will look like.

Like two hands stretching across the Mississippi River to touch, the pieces of the Iowa-bound basket-handle arch have slowly come together to meet at the keystone of the \$1.2 billion project.

And when the keystone was put into place on May 6, spectators watching on the levee cheered and motorists honked their horns at the historic moment.

"It felt very good to see the last piece of the westbound arch go up," said George Ryan, corridor manager for the I-74 improvements in the Quad-Cities. "It's a huge milestone for the people working on the structure."

The first arch looms over the Bettendorf skyline – visible from miles away, signifying substantial progress on the project that represents the future of transportation in the Quad-Cities,

and one that is transforming the city's downtown area.

While Quad-City residents have watched firsthand the construction for several years now from a number of great viewing spots along the riverfront trail, photographs on the official Interstate 74 website (www.I74RiverBridge.com) show a virtual scrapbook of cranes and girders, concrete pours and crews working from dizzying heights. Visitors to the website also can read detailed progress on the various phases of construction.

Ryan recommends the website's photo galleries as the best way to view continued progress on the bridge. His advice: Don't look while driving.

"The project website and social media pages are frequently updated with progress photos and videos, news and detours," he said. There are multiple project webcams, also accessible on the website, showing work in the river both from Bettendorf and Moline.

Ryan said the current goal is to open the new Iowa-bound bridge to traffic in

the second half of 2020.

Now that the arch is closed, contractors will be working on the span's deck, or roadway, he said.

"The majority of the girders for the approaches have been installed, and a significant amount of the concrete has already been poured. There will be a few more spans on either side of the arch as well as the arch span to complete," he said.

Work also is continuing on the Illinois-bound bridge. The last concrete pour for the substructure was completed in February, Ryan said. Construction has begun on the bases for the second arch.

Ryan said contractors are pretty confident that lessons learned in the construction of the first arch "will serve us well" as the arch for Illinois-bound traffic is built.

And progress continues on other portions of the project. "On land, contractors are working to expand the I-74 roadway to three lanes in each direction. With the westbound lanes in Moline and Bettendorf completed



www.I74RiverBridge.com



SEPT. 6, 2019: The retaining wall along Kimberly Road in Bettendorf is artfully designed.



SEPT. 19, 2019: A concrete deck pour in Bettendorf.



OCT. 20, 2019: Construction of the new I-74 lanes in Moline looking toward Iowa.



DEC. 23, 2019: The view of the new westbound Interstate 74 pavement.



APRIL 23, 2020: Workers install struts to help with the keystone installation for the westbound arch supports.



MAY 6, 2020: Ironworkers watch as the keystone piece is raised into position.



MAY 6, 2020: Standing 236 feet above the Mississippi River, crews await the 112.5-ton keystone piece.

last year, we are now working on the eastbound lanes," he said.

As local motorists know, the construction has required multiple shifts in traffic, local road closures and detours throughout the year. Traffic changes implemented in 2019 that detoured through traffic off I-74 to Interstate 80 have "been operating more efficiently than anticipated for both through traffic and local traffic," Ryan said.

"Motorists have been using alternate routes when possible, which has contributed to safer construction zones along I-74," he added. "In some cases, it's allowed the DOTs to complete sections of the interstate faster than planned and implement improved detours that make it easier for local motorists using I-74 to get to their destinations."

He asks motorists continue to be patient, drive with caution, watch for detour signs and check the project website for the latest traffic impacts. He also advised boaters on the Mississippi River to slow down, comply with no-wake zones marked by buoys, watch for overhead work, and avoid the bridge construction zone when possible.

The public also can reach out by calling the project hotline, 1-866-I74-4ALL (1-866-474-4255).

Photos used with permission©2020 Iowa DOT

Scott Community College offers opportunity in many locations

Scott Community College is THE Community's College, playing a key role in the vitality of the entire Quad-Cities community.

Scott Community College (SCC) is one of the Eastern Iowa Community Colleges (EICC) that includes Clinton and Muscatine Community Colleges. More than 4,500 students enroll in classes at SCC each fall. Slightly more than half of those students are enrolled in Associate in Arts (AA) programs. Iowa's state universities and area private colleges work closely with EICC to maintain formal transfer agreements, making it easy for students to transfer once they graduate.

Other SCC students are enrolled in one of more than 30 different career programs designed to lead directly



into the job market. These programs include: Nursing and Allied Health; Information Technology (Computers); Transportation; Culinary and Hospitality; Business; Education; Renewable Energy; and Manufacturing.

That's only a portion of

what SCC and EICC do.

The college works closely with business and industry to continually train new employees and retrain current ones. It also offers extensive adult and continuing education. All told, one in seven area residents attends



an EICC class every year.

SCC's main campus is located at 500 Belmont Road in Bettendorf, but that is not its only location. It also includes a West Davenport Center next to the city library on Fairmount Street, the Blong Technology Center just off Interstate 80, west of Davenport, and its most recent addition, the downtown Davenport Urban Campus.

For more information about the college, call toll-free 1-888-336-3907, or go online to eicc.edu.



SPECIALTY PIZZA & MORE!

We Also Serve Many Delightful Salads, Appetizers & Sandwiches – Hot or Cold



OPEN DAILY FOR LUNCH AND DINNER



🔊 Lots of TVs & Channels for Viewing of Most Sporting Events

🔊 Match Your Trivia Skills & Knowledge Against Other Players & Players Across the Country


SPORT'S FANS Pizza

563-359-5555

1723 Grand Street, Bettendorf

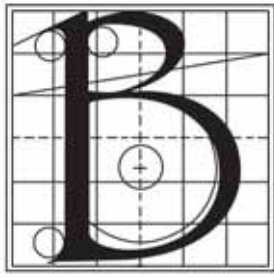
www.sportsfanspizza.com

Home Delivery
Delivery Starts at 5 p.m.



EASTERN IOWA COMMUNITY COLLEGES
CLINTON ♦ MUSCATINE ♦ SCOTT
THE Community's College

Explore Succeed Community



Bettendorf Community School District

Passion... Purpose... Pride

Student Achievement

scores consistently exceed state averages.

- Reading Proficiency – 85.07% (State 77.04%)
- Math Proficiency – 85.78% (State - 78.26%)



Linking learning to live with passion, purpose and pride so that all students can make a positive difference. BSCD Vision

A Great Place to Work! We value our staff throughout the district and work to recruit and retain highly-qualified employees.

61% Percentage of teachers have Masters degrees or MA with additional hours

7 National Board Certified teachers on staff

9.9 Average years of teacher service within the Bettendorf Community School District

Bettendorf High School is ranked 29 on the **2019 Iowa AP index**.

Student Access to Technology is a priority in the district with a 1:1 initiative in grades 6-12 and working toward 2:1 devices at the elementary level.

Historically, we are a **Highly Desired School District** with a 3:1 ratio of students open enrolling into the district, compared to those open enrolling out.

We have **Socio-Economic Diversity** with 36% of our students qualifying for Free & Reduced Lunch.

The Bettendorf Community School District has a greater **Cultural Diversity** among our students than the state average.

We have a **Therapy Dog Program** with five professional dogs and trainers working with students in our schools.



Visit our schools and learn more about the great opportunities we offer!

www.bettendorf.k12.ia.us (563) 359-3681

IOWA STATE UNIVERSITY EXTENSION IN SCOTT COUNTY

The staff at Iowa State University Extension in Scott County, with its office in Bettendorf, is dedicated to offering information that is helpful to citizens in their daily lives. That could include anything from information on what's wrong with your oak tree, to budgeting your income, or dealing with issues of parenting and wellness.

Extension offers information and education that is research-based and unbiased on a variety of topics. And it's available to any resident of Scott County.

Many people might be most familiar with the Master Gardeners program. These volunteers gave over 30,000 hours to the community in the past five years. Their goal is to provide education to citizens on gardening. They answer questions from the public in the horticulture clinic from April through October and by email and phone during that time as well as the rest of the year. They also give presentations and participate in local events. Education



Bill Brunkan, chair of the Horticulture Clinic, answers questions from callers to the Extension office.

about the need for bees, container gardens and lawncare are some examples of popular topics.

The office has approximately 100 "ready to use" kits for classrooms and youth groups that can be checked out. They are designed to have the curriculum and supplies ready for someone to use, stressing the Do-Reflect-Apply method of teaching youth. Schools and youth groups use these to keep youth engaged in their education.

Other services include Answerline at 1-800-262-3804, which offers immediate answers related to home and family living issues, such as home cleaning concerns and recipe questions. There is also a toll-free confidential service called Iowa Concern that helps citizens navigate through a variety of life circumstances including stress management, legal issues, finances, crisis and disasters.

Scott County Extension

875 Tanglefoot Lane
Bettendorf, IA 52722
Phone 563-359-7577
www.extension.iastate.edu/scott
On Facebook at ISU Scott County Extension

ARCHERY PRO-SHOP

We have the largest selection of archery equipment in the area featuring Hoyt, Mathews, Bowtech, and compound Bows.

GUNS & AMMO

We are your premier guns & ammo destination in the area.

HUNTING & FISHING

We are the premier destination for all your hunting & fishing needs.

ARCHERY RANGE

We have an indoor Archery Range & also offer Archery Lessons for beginners & individuals who would like to take their archery skills to the next level.

Located at 3250 Fields Drive, Bettendorf or call 563-243-4696

Live Bait! Minnows, Crawlers & Worms

Added 20 Rhinehart 3D targets to range!

Services include:

New & Used Guns • Archery Pro Shop & Lessons • Venison Processing • Minnkota Factory Authorized Sales & Service Center • Live Bait



BRIDGEVIEW



CODY



RIVERDALE
HEIGHTS



FOREST GROVE
OPEN 2021-22



HOPEWELL



PLEASANT VIEW



PV JUNIOR HIGH



PV HIGH SCHOOL

PLEASANT VALLEY COMMUNITY SCHOOL DISTRICT

THE PLEASANT VALLEY COMMUNITY SCHOOL DISTRICT WILL HAVE THE FINEST
ACADEMIC AND EXTRA-CURRICULAR PROGRAMS IN THE STATE.

NOT IN SOME THINGS, BUT IN EVERYTHING.

NOT FOR SOME STUDENTS, BUT FOR EVERY STUDENT.



25.2

COMPOSITE ACT SCORE
2017-2018



4

CONSECUTIVE
BOYS AND GIRLS
COMPOSITE MAC SPORTS
CHAMPIONSHIPS



2,000

STUDENTS INVOLVED IN
BAND
CHOIR
ORCHESTRA
DRAMA



100

ANNUAL \$1,000
SCHOLARSHIPS
AWARDED TO SENIORS
BY PV EDUCATIONAL
FOUNDATION



LEARN MORE ABOUT OUR PURSUIT OF EXCELLENCE
WWW.PLEASVAL.ORG

RIVERMONT COLLEGIATE

One hundred and thirty-five years of proven success speak to Rivermont Collegiate's ability to develop intellect, character, and creativity. It is the only PS(2)—12th Grade college preparatory school in the Quad Cities. It is ranked #1 Best High School for STEM in Iowa and among the top 8% in the nation. Rivermont Collegiate is also the top-ranked school in Iowa on the Advanced Placement Index, which grants college credit for classes taken in high school.

The only nonsectarian, independent school in the Quad Cities, Rivermont is a unique alternative to public and parochial schools. The hallmarks of the Rivermont Collegiate experience are small class sizes, individual attention, rigorous curriculum, and a shared



commitment to personal integrity and academic excellence.

An investment in your child's education, Rivermont Collegiate offers excellent value. Our students, on average, test a year-and-a-half to two years ahead of their peers at local public and parochial schools. Our

comprehensive college counseling program begins in middle school and has a proven record of admissions into the world's most selective colleges and universities. One hundred percent of Rivermont graduates are accepted to "best-fit" colleges and universities. Additionally,

recent Rivermont graduates have received an average of \$158,000 in merit-based scholarship offers to top universities.

The Science, Technology, Engineering, Arts, and Mathematics (STEAM) Center houses a state-of-the-art science lab, maker space, engineering lab, a computer and virtual reality lab, and much more.

Rivermont Collegiate welcomes the best and brightest students, no matter their socioeconomic background. In fact, 58 percent of students receive some form of tuition discount. There is so much more to Rivermont Collegiate than most people realize. We invite you to visit our website (www.RivermontCollegiate.org) and schedule a tour of our campus in Bettendorf at 1821 Sunset Drive so you can explore the value of a Rivermont education.

Consider us your
one-stop-shop for all
classes in art.

Sign up for painting, drawing, clay,
mixed media and STEAM classes at
bereskinartgallery.com.

beréskin
GALLERY & ART ACADEMY

2967 State Street, Bettendorf
563-508-4630





Five time recipient of the Pekin Insurance Iowa Agency of the Year



**SEE WHAT A
DIFFERENCE
WORKING WITH
AN AWARD
WINNING AGENCY
MAKES.**

940 Lincoln Road
Bettendorf, IA 52722

563-323-9233

www.nelsonbrothersagency.com



AUTO



HOME



BUSINESS



LIFE

**SENIOR PRODUCTS AND
EMPLOYEE BENEFITS**

Lourdes Catholic School

Having celebrated our Centennial anniversary last school year, Lourdes Catholic School is proud to be providing Faith-Based Education for over 100 years!

On February 11, 1919, the Feast of Our Lady of Lourdes, Sister Mary Gertrude and Sister Mary Perpetua opened our school with the stated purpose of “winning souls for Christ.” With just 62 pupils ranging from beginners to eighth-graders, the sisters taught in the home of Elias Gilbert, a former abolitionist whose house was part of the Underground Railroad. The following September, the school’s enrollment doubled. Since then we have continued to provide a high standard of education, while enriching children’s spiritual lives, social-emotional well-being, and moral focus.

Our goal is to meet each student at their educational style and level. We are proud to be the only private school in the Quad-Cities with teachers focused on Spanish language learning, special education, reading resource and enrichment studies.

With the financial support of our parish and school families, Lourdes, located at 1453 Mississippi Blvd., continues to maintain the most up-to-date technology, curriculum, and equipment for our students. In 2017, we opened a state-of-the-art middle school science lab — the benefits of which are unequalled. All students have access to various platforms for technology, including interactive whiteboards, desktop computers, Chromebooks, MacBooks, and iPads. Our students are able to engage in hands-on and technology-based learning at any time. Each year, we assess the curriculum that our students are using, and when necessary, we commit financial support to the adoption of new curriculum, such as Pearson’s Envision Science, purchased in the summer of 2019 for use by middle



school science classes.

While our focus on education is superior, we also know that our students’ spiritual growth and social-emotional well-being is a top priority. Our students benefit from the foundation of having faith in something bigger than themselves and strive to use this foundation to be good members of the community. Every homeroom organizes and participates in at least one service project every year, as well as school-wide service projects such as Student Hunger Drive, Backpacks with Snacks, and Pennies for Peru.

In this day and age, we understand the importance of a good relationship between school and home. That’s why we strive to support families when they choose Catholic education. With competitive tuition rates, multi-student discounts, and many options for tuition

assistance, Catholic education is an affordable, realistic option for all. We offer our own free and reduced lunch program to students who would qualify if they attended a public school. We also partner with Bettendorf Community School District to offer state-funded pre-kindergarten to any qualifying 4-year old.

When it comes to services, Lourdes is competitive with our public school neighbors. We offer affordable, on-site before and after school care for all school-age students. Additionally, we partner again with BCSD to provide free busing to and from school for a number of families.

As the only Preschool-8th grade Catholic school in Bettendorf, we are pleased to serve our community by providing the opportunity for superior faith-based education to all Quad-City area students.



Call (844) 359-4446 or visit good-sam.com to learn how Good Samaritan Society – Services@Home can help you today.



All faiths or beliefs are welcome.

R3-CONSTRUCTION, LLC

RECOVER.RESTORE.REBUILD



**WE WILL BE THERE FOR YOU
NO MATTER WHAT!**

A premiere new business in the heart of Bettendorf. Providing only the highest quality service that our commercial and residential customers deserve. Trust in the best haag-certified contractors! Call for a free estimate today!



Siding & Gutter Installation

Siding & Gutter Repair/Replacement

Roofing

Insurance Claim Assistance

5161 Utica Ridge Rd., Bettendorf, IA 52722

(563) 468-0176 • www.r3-restore.com

tim.b@r3-restore.com

Follow us on   [@recoverrestorerebuild](https://www.instagram.com/recoverrestorerebuild)

Bettendorf's beautiful trees

The fact that Bettendorf is graced with thousands of beautiful trees is no accident. Work done by the city's Parks Maintenance staff and a volunteer group, the Trees Are Us Committee, ensures that the city's trees remain plentiful and healthy.

In 1991, the City of Bettendorf made a commitment to address tree concerns citywide, including planting and maintenance. The Trees Are Us Committee was established at that time as a volunteer group of dedicated citizens that gather every month to create inventories and planting proposals within the Bettendorf city limits.

In 2016, after killing hundreds of millions of ash trees nationwide, the emerald ash borer arrived in Bettendorf. Trees Are Us is the only volunteer group in the state of Iowa that has



Volunteers from the Trees Are Us Committee plant trees in the city parks every year to continue to establish the urban canopy and create a diverse tree inventory.

implemented a treatment plan to preserve the majority of its ash trees. All city properties are evaluated yearly with ongoing treatment of 325 ash trees in spring 2019. The committee has also been involved with educating the public about the emerald ash borer and concerns associated with the pest.

With the decline of ash

trees, a significant reduction has occurred in the urban canopy of Bettendorf and many other Midwestern cities. Parks and recreation trail sections have been a main focus for repopulating trees and increasing the landscape value, while at the same time benefitting the environment.

Since the beginning, the Trees Are Us Committee

has planted over 2,200 trees and pruned thousands more. In fall 2019, an extensive tree maintenance plan was implemented by the Bettendorf Parks maintenance staff. During the 2019-20 winter months, more than 1,400 trees were pruned in some of the more high profile areas of the city. Crow Creek Park, Devils Glen Park, Veterans Memorial Park, and Middle Park were areas of emphasis for the pruning program, along with many right of way and boulevard plantings.

In February 2020, the Trees Are Us Committee was awarded the Growth Award by the Iowa Urban Tree Council. The committee also gained certified Tree City USA status again for its efforts in helping the City of Bettendorf continue to replant and establish the urban canopy.

You can follow the committee on Facebook at: <https://www.facebook.com/TreesAreUs>



DQ Bettendorf

**Susan Medd Owner
for 43 years!**

- Treats
- Drinks • Cakes

2535 18th Street



**Follow us on social media!
@dqbettendorf**

563-359-9480



Bettendorf Commercial Districts

Downtown Bettendorf: Anchored by the Interstate 74 Bridge, located along Grant and State Streets from 6th Avenue to 26th Avenue, this riverside district has established a SSMID known as Downtown Bettendorf Organization. Landmarks include the Isle Casino and Hotel, the Alter Building, Ascentra Credit Union home office, K&K Hardware, and The Bridges Lofts. Downtown is home to Bettendorf's City Hall, police department, and the central station for the fire department. There are a wide variety of service and home improvement businesses and restaurants in the area.

- The newest shopping district, **The Plex**, is anchored by the multi-function TBK Bank Sports Complex, at Forest Grove and Middle roads, just off Interstate 80. The fast-developing hospitality and recreation district offers a variety of casual restaurants, bars and services, including the Cambria Hotel.

- **Glen Roads district:** It's comprised of all four corners around the intersection of Middle and Devils Glen Roads. It is anchored by Hy-Vee, Walgreens,

Bettendorf Office Products and Whitey's, among many other retail and service businesses.

- **Cumberland Square district:** Located at Spruce Hills Drive and 18th Street, anchors include the two-block outdoor mall that is Cumberland Square with other businesses, restaurants, banks, and services branching out from there. Major businesses are Wells Fargo Bank, Great Southern Bank and CVS. The Goodwill Store and Discovery Shop are nearby, as is the Learning Campus featuring the Family Museum and Bettendorf Public Library.

- The **Utica Ridge and Spruce Hills corridors**, also known as the Lodge District, features the new Home2Suites, with other businesses planned for the area. Longstanding businesses there include U Haul and Old Chicago restaurant. UnityPoint Health — Trinity Bettendorf Hospital is located on Utica Ridge Road.

- **18th Street and 53rd Avenue**, the Falcon Avenue area, where anchors include Ascentra Credit Union, Ross' Restaurant and the Genesis HealthPlex, plus additional restaurants, bars, and other services.

- **Duck Creek Plaza district**, one of the first shopping areas in Bettendorf, at Kimberly Road, Middle Road, and Interstate 74. Anchors include Home Depot, Hilton Garden Inn, Schnucks, Walgreens, Burlington and Pizza Ranch. There are also several restaurants, coffee shops, retail stores and other services.

- The **Golden Triangle district** is bounded by Belmont Road, Middle Road and Devils Glen Road, overlapping the Glen Roads district. Anchors include Lindquist Ford, Vibrant Credit Union, Fareway Meat & Grocery, and other services and restaurants. It is close to Pleasant Valley High School and Scott Community College.

- **Highway 67 Corridor**, the Eastern Gateway to Bettendorf, is along State Street between 26th Avenue and Duck Creek. Though largely industrial, there are businesses located along there, including Bereskin Gallery & Art Academy, Quad-City Pizza Company, Bettendorf Animal Hospital and Teriyaki Madness, among others. Industries along that route include Vizient Manufacturing Solutions, Sivyer Steel Castings and Donohoo Steel Treating.

WHAT DO YOU WANT YOUR CABINETS TO DO?

Showplace Cabinetry is American Made, and Employee Owned.
See what your cabinets can be at
Showplace Cabinetry Design Center - Quad Cities!



Tell them it's Showplace
or No Place!

ShowplaceCabinetry.com

JADE LOMMEN

JADE.LOMMEN@SHOWPLACECABINETRY.COM

Complimentary In-home consultations available:

Monday - Friday 9am to 5pm

(or by appointment) • Cell: 563-940-7506

Pest Management Solutions, Inc.

563-340-2005

9 Years Experience

Your locally owned, safe and friendly pest control company.

Rodents (includes moles)
Box Elder Bugs • Mosquitoes
Ants • Spiders • Wasps
All the insects!

We offer competitive pricing along with our
30 day guarantee.



**Mention this ad to
receive a 10% discount off
any service.**

Call Steve today for a free quote!

Pestmgmtco@gmail.com • Find us on



<https://www.pestmgmtco.com/>

Summer camps offered by the Family Museum offer a variety of activities.

Family MUSEUM

Operate a crane, shop for groceries, sort mail, and climb into a tree house at the fun-filled and interactive Family Museum. With 44,000 square feet of programming space, this hands-on museum is designed for children 8 and under and encourages families to play and learn together.

Visitors to the Family Museum's interactive exhibit gallery discover how food moves from the modern farm to the local store by caring for animals, driving a combine, and moving grain in the *Farm* exhibit. Guests explore the Mississippi River by adding obstacles and raising or lowering water levels as they watch their boat make its journey down a 28-foot indoor waterplay table resembling an actual stretch of the Mississippi River.

Families can chat with neighbors or wave to the mail carrier in the *Town Square* exhibit which includes features of everyday life. And our youngest guests make alphabet soup, wash the laundry, and splash around in the virtual pond (without getting wet!) in *PlayHouse*.

New to the Family Museum in 2020 is the two-story Luckey Climber presented by Genesis Birth Center. This climber is part jungle gym and part work of art. It offers a fun and safe way for guests to climb from the first floor Great Hall to the second floor. When visitors arrive



Children can explore how food moves from the modern farm to the local grocery store in the *Farm* exhibit.

on the second floor landing, they are greeted by the brand-new creative space, Imagination Studio, where families are invited to make and create anything they can imagine with a large variety of materials and art supplies.

In addition to the hands-on gallery, the Family Museum offers a large number of programs and classes, including summer camps, comprehensive dance, drop-in classes, preschool, Spanish, and after school programs.



Family Museum
2900 Learning Campus Drive
Bettendorf, Iowa 52722
563-344-4106
www.familymuseum.org



Come enjoy
the good life
with us at
The Fountains!

SAFETY | SECURITY | SUPPORT | *happiness*

Experience the Dial difference at The Fountains!

- Wonderful, built-in social network of friends
- Restaurant style dining prepared by our amazing culinary team
- Opportunities for educational and leisure events and outings
- Lifestyle activities to suit an array of interests
- Complimentary housekeeping services
- Transportation to medical appointments
- 24-hour on-site staff

So Much More!

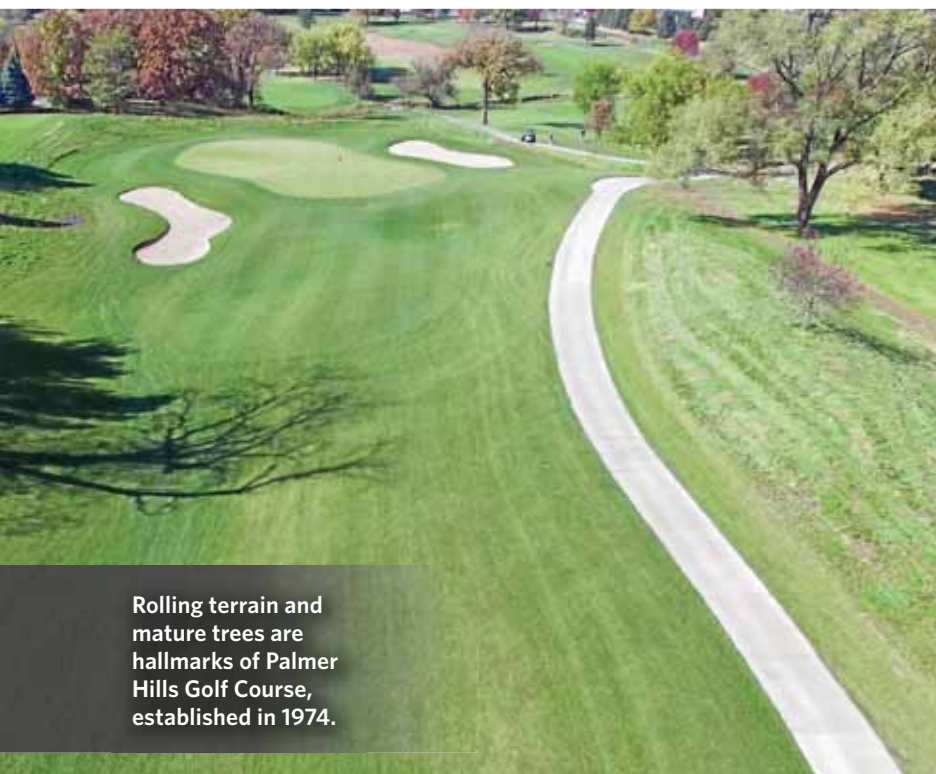
CALL TODAY FOR YOUR PERSONAL TOUR!

563.332.5775

3726 Thunder Ridge Rd
Bettendorf, IA
fountainsseniorliving.com

 **THE FOUNTAINS**
DIAL SENIOR LIVING

PALMER HILLS GOLF COURSE



Rolling terrain and mature trees are hallmarks of Palmer Hills Golf Course, established in 1974.

Palmer Hills Golf Course is an award-winning public 18-hole course and driving range. Established in 1974, Palmer Hills is home to 100-year-old oak trees and features rolling hills with creeks, and a pond coming into play on 11 holes. It has won the “Locals Love Us” best golf course award for the past six years.

The hills and water can provide a challenge, but a wide variety of teeing options make Palmer Hills playable for golfers of any caliber. Visit our clubhouse restaurant, The Palmer Grill, for a wide variety of delicious meals for lunch and dinner. Enjoy the spectacular views of our golf course while dining inside or out on the deck.

A new putting course scheduled to open for play in May of 2021 at Palmer Hills will consist of 18 individual holes played on a 1.5 acre putting green. The putting surface will have more undulations than a regular golf green to create strategic shots, challenge and most importantly, a fun experience. This will be a great new feature at Palmer Hills.

Palmer Hills Golf Course
2999 Middle Road
Bettendorf, IA
563-332-8296
www.palmerhillsgolf.com



THANK YOU QUAD CITIES FOR VOTING US #1 IN
WATER & FIRE RESTORATION

BLAZE
Restoration, Inc.
WE LOVE YOU TOO!

LOCALS LOVE US
LOVEUS.COM

Shared IT
MAKING TECHNOLOGY TRANSPARENT
WE EMPOWER YOU TO FOCUS ON YOUR COMPANY GOALS

WWW.SHAREDIT.COM
563-355-7473

Kids at one of the summer
Parks and Recreation activities
in 2019 enjoy a tug of war.

OUTDOOR RECREATION, SPORTS AND TRAILS

MIDDLE PARK, 2220 23RD STREET

Any time of the day, you'll find this 45-acre premier park bustling with activity! Enjoy playing baseball on one of the beautiful ball fields. Maybe try out the 18-hole disc golf course. Middle Park also has a lagoon that offers catch and release fishing, and shelters available for rent with grills, electricity, tables and playgrounds.

Bettendorf Parks and Recreation utilizes this park for many of its recreation programs, and we welcome everyone to come visit. Enjoy a leisurely walk, run, or bike ride along the bike path that runs

through the park and travels through most of Bettendorf. Be sure to stop and visit the beautiful Centennial Gardens as well.

An extra bonus is that Middle Park is also the current home to our outdoor Splash Landing Family Aquatic Center during the summer months and home to our outdoor Frozen Landing Family Ice Rink during the winter months.

For more information, please contact the Parks and Recreation offices at 563-344-4113.

RECREATION PROGRAMS

Attention, parents! Let us help your child have a summer packed with fun! We offer several outdoor summer programs

to not only meet your needs, but also to give your little ones an opportunity to be in the parks, socialize with others, and enjoy a variety of activities. Whether you are seeking a morning program, a few hours in the afternoon, or perhaps an all-day camp, we have you covered. Our recreation staff plans exciting agendas to keep your little ones active, engaged, and creative. Our programs offer crafts, games, special visitors, fun field trips, and more. We focus on large group as well as small group activities, and our staff always makes sure your children are comfortable, having fun, and making friends. From 3-year-olds to 12-year-olds, we have a program for you.

WORK FROM
ANYWHERE



GET A VIRTUAL OFFICE AT NORTHWEST OFFICENTER.

- PROFESSIONAL BUSINESS ADDRESS
- FULL-TIME RECEPTIONIST TO GREET CLIENTS
- SECURE MAILBOX
- ACCESS TO CONFERENCE ROOMS
- FULL RANGE OF OPTIONAL CLERICAL SERVICES

563.445.2300 | nwofficenter.com
2550 Middle Road, Bettendorf, IA



www.rememberyourlifevideo.com
563-650-1512 • Steve Trainor

Business - Church - Personal History Videos

40 yrs. interviewing experience -
Samples & testimonials on site

Free consultations
Legacy DVDs - Save Your Story Forever

*"The business of life is the acquisition of memories.
In the end, that's all there is."
- Carson the butler in "Downton Abbey."*

Bettendorf 101:

CITY CITIZEN ACADEMY

Whether you are a new Bettendorf resident or lived here all your life, the Bettendorf 101: City Citizen Academy is for you.

The Citizen Academy is a free seven-week workshop that gives residents an in-depth look at how their city operates. Participants will gain knowledge and insight through discussions, demonstrations, and site visits.

The city hosts two academies each year, spring and fall. Classes are held on Thursday nights from 6 to 9 p.m. with the exception of the bus tours. You must be a Bettendorf resident and be at least 18 years old.

To register for the next academy, email your name, address, phone number, and email address to lhaldeman@bettendorf.org or call 563-344-4033.



For more information visit www.bettendorf.org and click on Public Info button on the main page.



Members of the Bettendorf 101: City Citizen Academy tour the city's Waste Water Treatment Plant in 2018.

CAT'S EYE DISTILLERY

One must know the science behind the processes before one can create truly EPIC tasting products.

Local distillery located in the heart of Bettendorf, IA! From start to finish, our products are hand crafted to only use the best quality, local ingredients.

Known for our smooth tasting; *Essence of Iowa, Krupnik and Obtainium Master Collection Series!*

3232 Bear Tooth Ct., Bettendorf, IA 52722
563-505-6912
catseyedistillery@aol.com • www.catseyedistillery.com

Kwik Star

Stop by your local Bettendorf Kwik Star today!

We'll make dinner.

TRY OUR NEW FRIED CHICKEN!
Sides available. Hot and ready to eat!



KITCHEN CRAVINGS®

Vintage Cooperative is breaking ground in Bettendorf!



Call or Stop By Today

Monday-Friday 8 a.m. - 4 p.m.

Call Rhonda at 563-349-1131 or
email rhonda@vintagecooperatives.com

- Visit our office -

○ 2550 Middle Road #402, Bettendorf ○

- ENJOY MAINTENANCE-FREE LIVING (inside & outside)
- APPRECIATE FINANCIAL SECURITY
- GROW YOUR INVESTMENT
- FUNCTION & STYLE IN ONE
- TRAVEL WITH EASE
- COMMUNITY FOCUSED
- HEATED UNDERGROUND PARKING
- FITNESS CENTER
- GREAT ROOM

TUCKED INTO A SECLUDED SETTING AT THE CORNER of Spruce Hills & Middle Road, Vintage Cooperative of Bettendorf is a great place where those 55+ can enjoy home ownership without maintenance.





The City of Bettendorf's online store carries a variety of items.

Check out BETTENDORF'S ONLINE STORE

Need a gift for a special occasion? Check out the City of Bettendorf's online store.

Show your hometown pride by gifting an item that displays the city's logo. Sweatshirts, blankets and mugs are just a few of the items available for purchase online and also at the Family Museum Store and Palmer Hills Pro Shop.

Visit the city's webpage www.bettendorf.org and click on the City Store tab to see styles, colors and sizes.



Hilton Garden Inn

Hilton Garden Inn Bettendorf
 959 Middle Rd Bettendorf, Iowa 52722
 (563) 265-2121
www.bettendorfquadcities.hgi.com



Life's Better at the Garden



ONE

REALTYONEGROUP

Jeffrey B. Hill

REALTOR Realty One Group
 Opening Doors
 4726 N. Brady Street
 Davenport, IA 52806
 Licensed in Iowa
realestate.boomer@gmail.com
563-349-5243

Please contact me
to learn how we are
Opening Doors
in the Quad Cities!!



WE *love* COMMUNITY



It's
what
we do.



Blackhawk
BANK & TRUST

Proudly serving you from:

4413 53rd Avenue
Bettendorf, IA

Follow us!  

ChoosetheChief.com

NMLS: 405298



DONOHOO
STEEL TREATING



Providing quality heat treating services in Bettendorf Iowa since 1946!

ISO 9001:2015 Certified

InSpec • OnTime • InBudget • OnLine

423-33rd Street, Bettendorf, Iowa 52722

www.donohoosteel.com • **ph:** 563.355.1805

SCHOOLHOUSE REFLECTS BETTENDORF'S PAST

BY JAN TOUNEY

Bettendorf's past meets its future on a stretch of rural road on the city's far north side.

The Forest Grove School No. 5, which was built in 1873, stands like a window into Bettendorf's past, while in the distance hundreds of new homes speak to the Premier City's future.

The extensive work on renovating the one-room schoolhouse began in 2012. Ribbon cutting took place in September of 2019.

To fully describe the work that was accomplished in the building's restoration would take a book. Much of it is documented on the website at www.forestgroveschool.org. And a full feature-length documentary called "Resurrecting Forest Grove" is being produced by award-winning historical documentary filmmakers Tammy and Kelly Rundle of Fourth Wall Films.

The interior of the schoolhouse has been renovated to the era of the 1920s.

"We had two 1923 photos of the exterior that had the best example of what the bell tower looked like," said Sharon Andresen, project coordinator for Forest Grove School Preservation. "We wanted to put the bell tower back on the building, and that's why we chose that period of time."

Visitors will see desks from that period, a Victrola machine, a 48-star flag, and many other furnishings and accessories common to a school of that era, down to the hand bell sitting on the teacher's desk.

"Our hope is that people will step inside and feel the atmosphere of where children learned in the 1920s," Andresen said.

While the site does not have regular hours for the public yet, the group of volunteers involved in the school's

"Our hope is that people will step inside and feel the atmosphere of where children learned in the 1920s."

Sharon Andresen, project coordinator for Forest Grove School Preservation

preservation hopes that will be a reality at some point. Plans call for the schoolhouse to operate as a museum/interpretive center. Tours can be arranged for private groups.

More information on the historic site also can be found on Facebook at Forest Grove School Preservation.

The school, which closed in 1957, is located on the Century Farm owned by the Blunk family. The family leases the property on which the school stands to the preservation foundation for \$1 a year.

Bob Blunk grew up near the schoolhouse, which was closed and "just an old building" on the property to him. But he heard stories about what it was like to be a student there, particularly from his father, Delbert.

"We heard that kids used to ride their ponies to school," he said.

He praised the work of the volunteers who spent countless hours in turning the crumbling building into the shining gem it is today.

It's gratifying for him and his family "to see it embraced and to see people stopping and understanding how beautiful it is," he said.

Down the road from the restored schoolhouse, a brand-new Forest Grove Elementary is under construction by the Pleasant Valley School District, a reflection of the growing number of families moving into the area.



Visitors celebrated the ribbon-cutting at Forest Grove School No. 5 in September 2019 by touring the building and grounds.

Asphalt Sealing

- Residential
 - Driveways
- Business

Pothole
Patching

- Parking Lots
- Parking Stripes

For a *free estimate* on
any size area...

**Call Fred at
309-794-6200**

FW ASPHALT



CONCEPT *Bath*
Extraordinary Bathrooms & Kitchens



**We make it
easy for you!**
Our team of professional
designers and installers work with
you on every step.
Locally owned and managed. We
put everything in writing.

On Budget!
On Time!
No Surprises!

344.9138 • www.conceptbath.com

2203 Grant St., Bettendorf, Iowa



CONCEPT *Kitchen*
Extraordinary Bathrooms & Kitchens



THE GAMES YOU LOVE

Get in on all of the action with over 900 slot and video poker machines. Then, play all your favorite tables games including blackjack, craps, roulette, three-card poker, Pai Gow, Ultimate Texas Hold'em and Match'em Hi-Low.

THE VENUE OF YOUR DREAMS

With over 40,000 square feet of premiere banquet space, our team will work with you to make sure everything is taken care of down to the last detail.



WilliamHILL
SPORTS BOOK

YOUR HOME FOR ALL THE ACTION

Isle Casino Hotel® Bettendorf has partnered with America's leading sports book operator, William Hill®. You can now wager on the most diverse sports betting menu throughout the year!

©2020 ELDORADO RESORTS, INC. Isle, Isle Casino Hotel, and ONE Club are registered trademarks of Eldorado Resorts, Inc. Quad-Cities Waterfront Convention Center is a Service Mark of the City of Bettendorf. Gambling a problem? There is help. And hope. Call 1-800-BETS-OFF.



**CASINO • HOTEL
BETTENDORF**