

A closer look at Forest Grove Park plans

The City of Bettendorf and RDG Planning & Design have continued to refine plans for the 100-acre Forest Grove Park, which will be located northeast of the intersection of Forest Grove Road and Middle Road. Parks and Recreation Director Steve Grimes and Mike Bell of the Des Moines-based RDG planning and design firm recently presented the latest plans for the park to the Bettendorf City Council.

Grimes said the cost of the various elements planned for the park have not been determined, and while construction of some elements of the park are expected to begin within the next year or two, the development of all of the planned elements in the park could take 20 years or more, and could change depending on the needs and wants of the community.

— Information compiled by Steven Martens

ADVENTURE COURSE



Bell said the adventure course is intended to provide an "iconic" feature at the park that would be visible to motorists on Interstate 80 just north of the park. The adventure course would take advantage of the park's natural topography and could include features such as a zipline. The adventure course is one of the lower priorities on the list, and Grimes said it is possible that a private company could be brought on board to develop and run the adventure course.

ART WALK

The Art Walk will be a trail, either paved or unpaved, that will create a walking tour of pieces of art. Grimes said the purpose is to give the public a chance to enjoy art in a natural setting, such as this one in Des Moines.

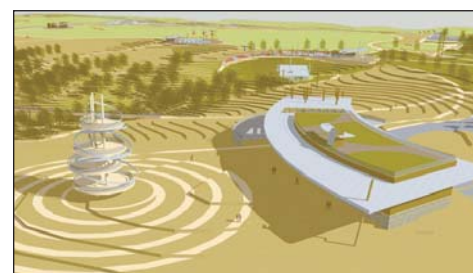


MIRACLE FIELD

The Miracle Field is a baseball/softball field with a rubberized surface, making it wheelchair-accessible. Grimes said the idea for the Miracle Field came from the community, which has raised the possibility of building such a field locally for several years. Grimes said the difficulty was finding enough space and enough money to build it. The Miracle Field is listed among the first priorities in the list of proposed park elements. (This photo is from a similar field in Des Moines.)



COMMUNITY BUILDING



The community building is only a concept right now and could serve as a community meeting place and provide educational opportunities, Grimes said. There are no specific plans about the size and design of the building.

WINTER PLAZA



The Winter Plaza would provide a place for winter recreation, such as ice skating and sledding. Grimes said one thing the park planners learned while meeting with the public was that there was a need in the area for winter recreation opportunities. It is one of the high-priority features on the list.

OTHER KEY FEATURES

Neighborhood Node and Community Corner

The Neighborhood Node and Community Corner are areas along the eastern edge of the park that would include shelters and playgrounds designed to be accessible to people who live in the surrounding neighborhood.

The Edge

The Edge is an area on the eastern edge of the park that could include amenities such as a dog park.

The Great Lawn

The Great Lawn is a greenspace that could be 10 to 15 acres in size. It would include baseball fields but no fences, which would allow the space to be used for other sports activities.

Ecological Restoration

The restoration of Spencer Creek also will include educational opportunities that will allow visitors to get their hands in the water. Bell said park features that allow visitors to get into



ONLINE LATER TODAY

A slideshow from RDG partner and designer Mike Bell at thebettendorffnews.com