

The Landing:

A Community Water Park
A Versatile Ice Rink
A Unique Recreational Center



The Landing

A Community Water Park



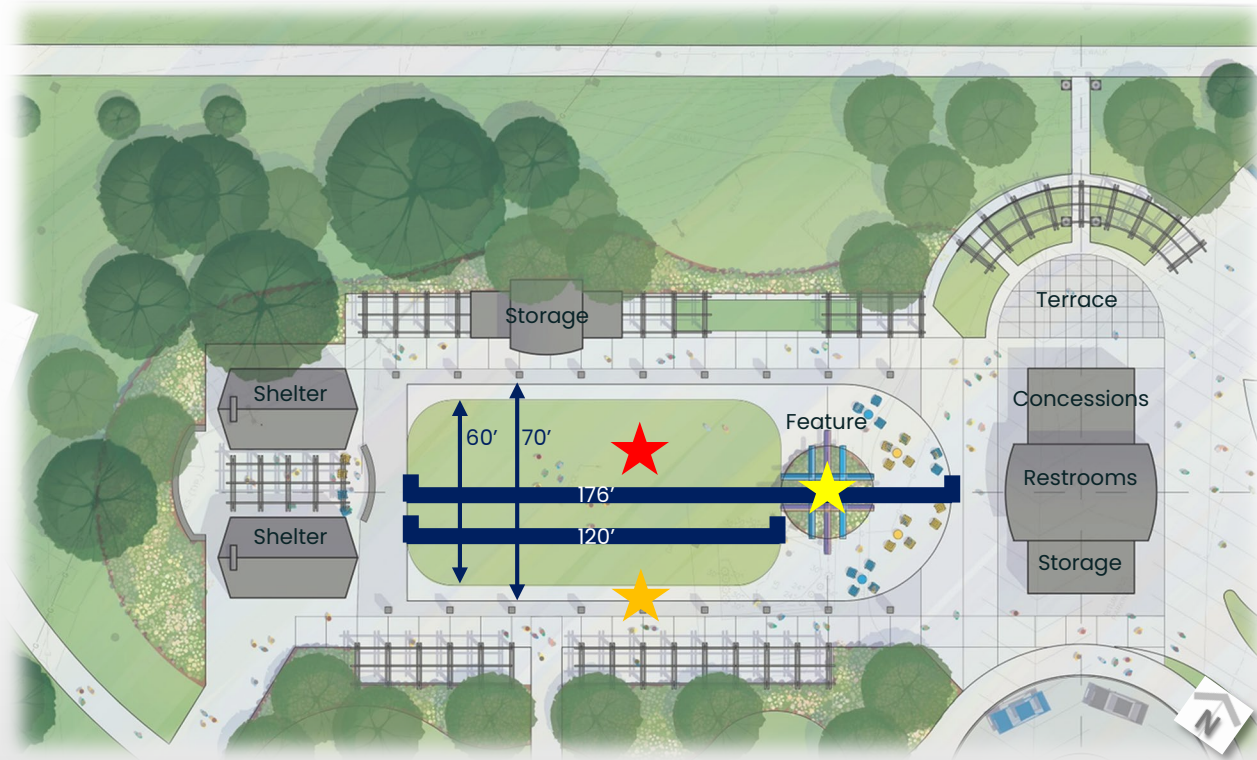
The Landing

A Community Water Park

- Serve up to 1,500 People Compared to 700 People
- Open to Public Every Day
- Daily Admission Fee for Non-Y Members
- Owned by the City, Operated by the Y
 - Saves Taxpayers \$200,000/Year



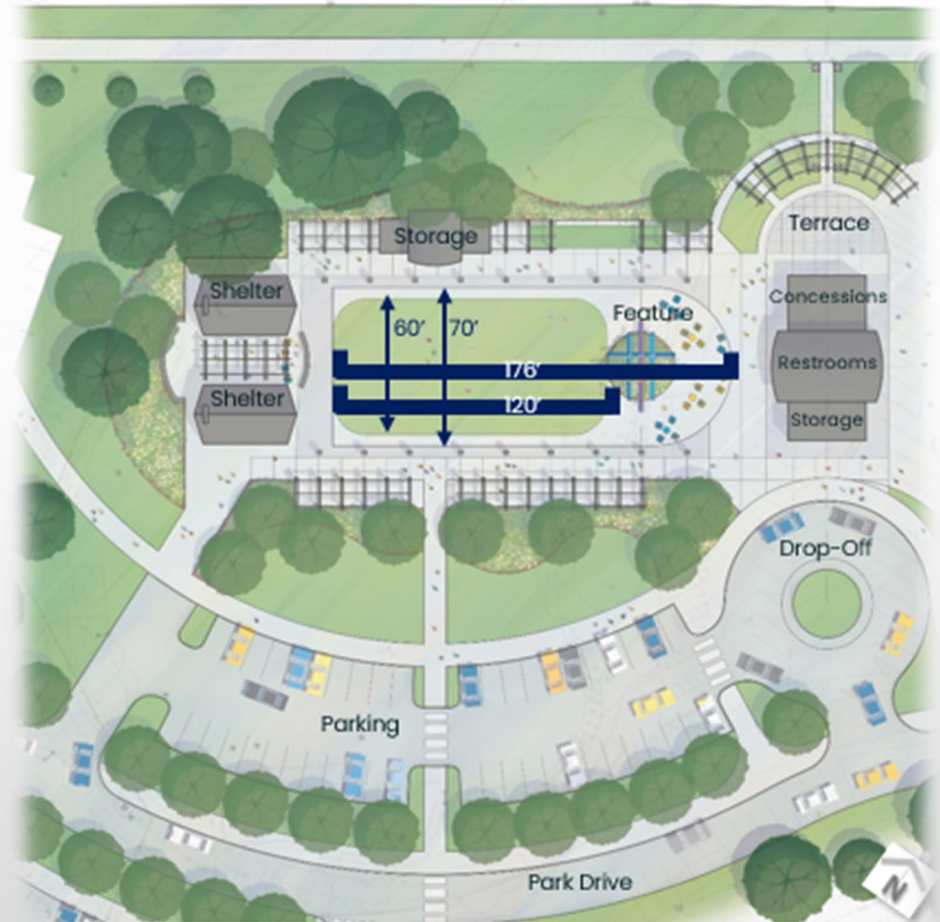
A Versatile Ice Rink



Current Ice Rink: 60' x 120'
Proposed Ice Rink: 70' x 176'

A Versatile Ice Rink

- Provide Outdoor Winter Recreational Activities
 - 14,577 Patrons Visited Frozen Landing in 2021-2022 Season
- Allow Additional Space for Pool Patrons & Other Recreational Activities During Off-Season
- Owned and Operated by the City
 - Saves Taxpayers \$25,000-\$50,000/Year



A Unique Recreational Center

- Life Fitness Center Becomes A Youth-Focused YMCA
 - Early Learning Center for 100 Additional Children
 - Gymnastics/Ninja Center
 - Indoor Recreational Soccer & Basketball Programs
 - Summer Recreational Sports Camps
 - Youth Personal Training Center



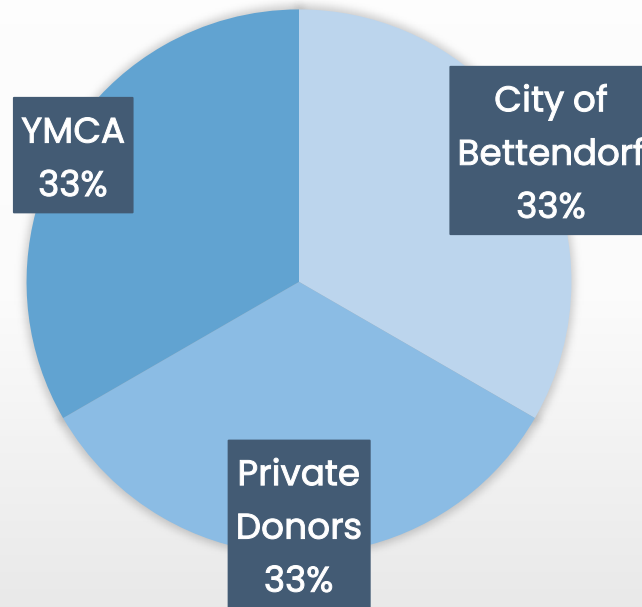
A Unique Recreational Center

- 18-Month Guarantee for Indoor Tennis Players
- YMCA Joiner Fee Waived for All Current Life Fitness Center Members
- Open for City-Run Recreational Programs in Inclement Weather
- Continue to Serve as City Emergency Shelter
- Ownership Transfers from City to Y
 - Saves Taxpayers \$250,000/Year



Funding

Water Park: Estimated \$18.7 Million*



Ice Rink: Estimated \$3 Million*
Funded, Owned, and Operated by the City

*Projected Costs by RDG Market Study

Proposed Timeline

- Fall 2022
 - City Council Vote
 - Site Development Plan Process
- Winter 2022–2023
 - Bid Process
- January 2023
 - Recreational Center Opens
- Spring 2023
 - Construction Starts
- Spring 2024
 - New Water Park Opens

Community Engagement

Community Informational Open Houses

Wednesday, August 24th 5–7pm

Monday, August 29th 5–7pm

Waterfront Convention Center, Bettendorf

September 6th: City Council Sets Public Hearing for
September 20th at 7pm

Council Chambers, Bettendorf City Hall

Ask Questions/Submit Comments:

bettendorf.org/TheLanding

Community Impact

- Taxpayers Save \$450,000-\$500,000 Every Year
- No Tax Increases
- State-of-the-Art Amenities in the Community
 - Water Park: Estimated 100,000 Visitors/Year
 - Ice Rink: Estimated 15,000 Visitors/Year
- New, Affordable Recreational Youth Programming + Continuation of City Recreational Programs

The Landing:

A Community Water Park
A Versatile Ice Rink
A Unique Recreational Center



The Landing