

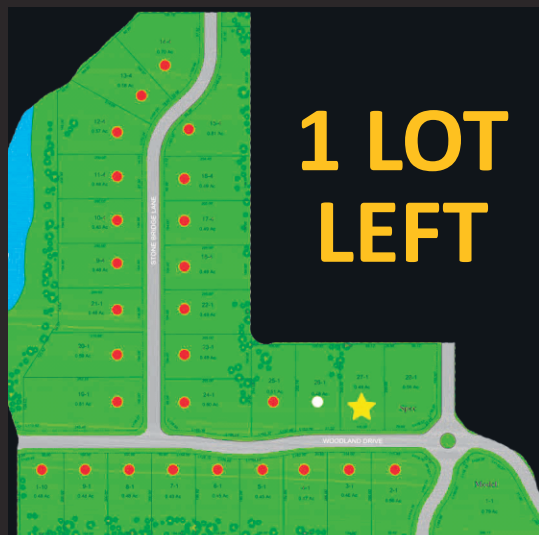
The Woodlands

Bettendorf, IA

May Completion



4790 Woodland Dr., Bettendorf



- Level Lot (27-1) in The Woodlands
- Community Pool
- Two Stocked Lakes



6501 Blackbird Ln., Bettendorf

TWO GREAT OPTIONS, ONE PERFECT FIT! Villa or Villetta — Your Choice Awaits



361 E. Donahue St., Eldridge

- Villas starting in the lower \$300s
- 2-3 bedrooms, 2-3 baths
- 2 car garage
- Foundation or slab on grade
- Snow & lawn care

IVY ACRES

Eldridge, IA



535 N. 4th Ave., Eldridge

- Villettas starting at \$236,900
- 2 bedrooms, 1 or 1.5 baths
- 1+ car garage
- Slab on grade
- Snow & lawn care

Nearby: YMCA • Sheridan Meadows Park • Library • Eldridge bike trail • Many restaurants

ASPEN HOMES LLC
A WINDMILLER COMPANY



3918 Orchard Dr., Bettendorf

THINKING
OF SELLING?

BUYERS ARE
READY.
LET'S GET
YOUR
HOME SOLD!

SOLD
Mel Foster Co.
Making It Happen!
GERI DOYLE
563-343-5526
www.geridoyle.com
geri.doyle



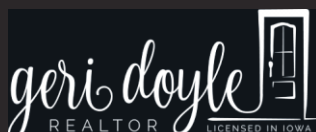
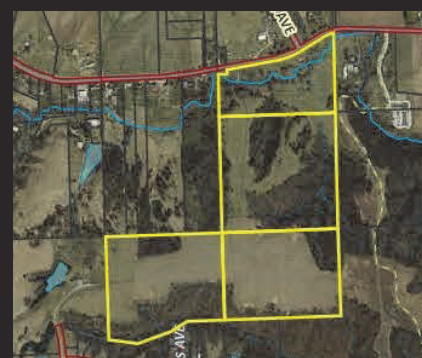
19468 250th Ave., Bettendorf



NEW LISTING!

0 Telegraph Road, Davenport

- 121.26 acres MOL
- 47.3 tillable acres
- 73.89 acres of timber & pasture
- Adjacent to Sunderbruch Park



Call or Text (563) 343-5526

geridoyle.com

Licensed in Iowa

