

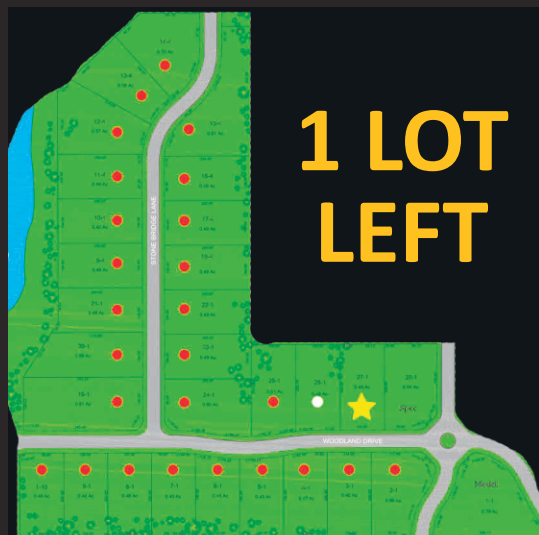
# The Woodlands

Bettendorf, IA

**May Completion**



**4790 Woodland Dr., Bettendorf**



- Level Lot (27-1) in The Woodlands
- Community Pool
- Two Stocked Lakes



**6501 Blackbird Ln., Bettendorf**

## TWO GREAT OPTIONS, ONE PERFECT FIT! Villa or Villetta — Your Choice Awaits

**\$336,250**

**By Appointment**

**361 E. Donahue St., Eldridge**

- Villas starting in the lower \$300s
- 2-3 bedrooms, 2-3 baths
- 2 car garage
- Foundation or slab on grade
- Snow & lawn care

**\$244,420**

**Completing Soon!**

Photo of Similar Home

**529 N. 4th Ave., Eldridge**

- Villettas starting at \$236,900
- 2 bedrooms, 1 or 1.5 baths
  - 1+ car garage
  - Slab on grade
  - Snow & lawn care

**IVY ACRES**

Eldridge, IA

Nearby: YMCA • Sheridan Meadows Park • Library • Eldridge bike trail • Many restaurants

**ASPEN HOMES LLC**  
A WINDMILLER COMPANY

**\$750,000**

**OPEN 12:00 - 1:30**

**4136 Muirfield Ct., Bettendorf**

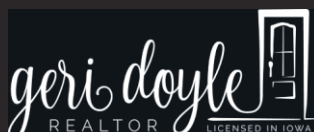
- 5 bedroom, 3.5 bath
- 4 season room
- Built-in wet bar & custom entertainment center on walk-out LL
- Wyndam West subd.



**\$839,900**

**19468 250th Ave., Bettendorf**

- 5 bedroom, 4.5 bath
  - 3 car garage
  - ML primary suite
  - Bonus room on 2nd flr
  - Walk-out LL
- Bring Your Own Builder**



**Call or Text (563) 343-5526**

geridoylerealtor.com

Licensed in Iowa

