

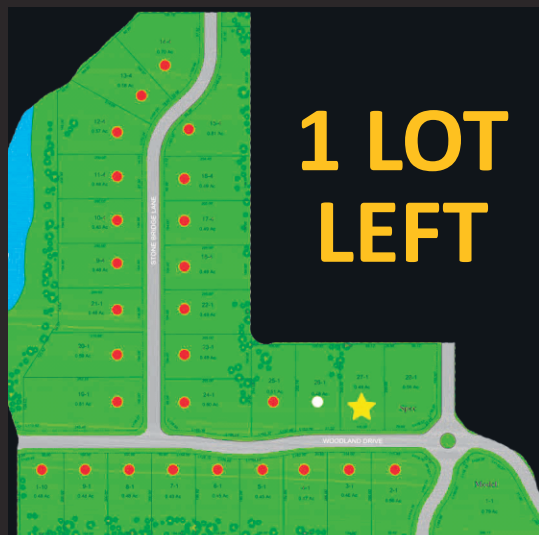
The Woodlands

Bettendorf, IA

May Completion



4790 Woodland Dr., Bettendorf



- Level Lot (27-1) in The Woodlands
- Community Pool
- Two Stocked Lakes



6501 Blackbird Ln., Bettendorf

TWO GREAT OPTIONS, ONE PERFECT FIT! Villa or Villetta — Your Choice Awaits

\$336,250

By Appointment

361 E. Donahue St., Eldridge

\$244,420

Completing Soon!

Photo of Similar Home

529 N. 4th Ave., Eldridge

- Villas starting in the lower \$300s
- 2-3 bedrooms, 2-3 baths
- 2 car garage
- Foundation or slab on grade
- Snow & lawn care

IVY ACRES

Eldridge, IA

- Villettas starting at \$236,900
- 2 bedrooms, 1 or 1.5 baths
- 1+ car garage
- Slab on grade
- Snow & lawn care

Nearby: YMCA • Sheridan Meadows Park • Library • Eldridge bike trail • Many restaurants

ASPEN HOMES LLC
A WINDMILLER COMPANY

\$750,000

4136 Muirfield Ct., Bettendorf

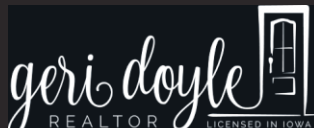
- 5 bedroom, 3.5 bath
- 4 season room
- Built-in wet bar & custom entertainment center on walk-out LL
- Wyndam West subd.



\$839,900

19468 250th Ave., Bettendorf

- 5 bedroom, 4.5 bath
 - 3 car garage
 - ML primary suite
 - Bonus room on 2nd flr
 - Walk-out LL
- Bring Your Own Builder**



Call or Text (563) 343-5526
geridoyle Realtor.com
Licensed in Iowa

