



The Road Back

Reopening Plan Fall 2020



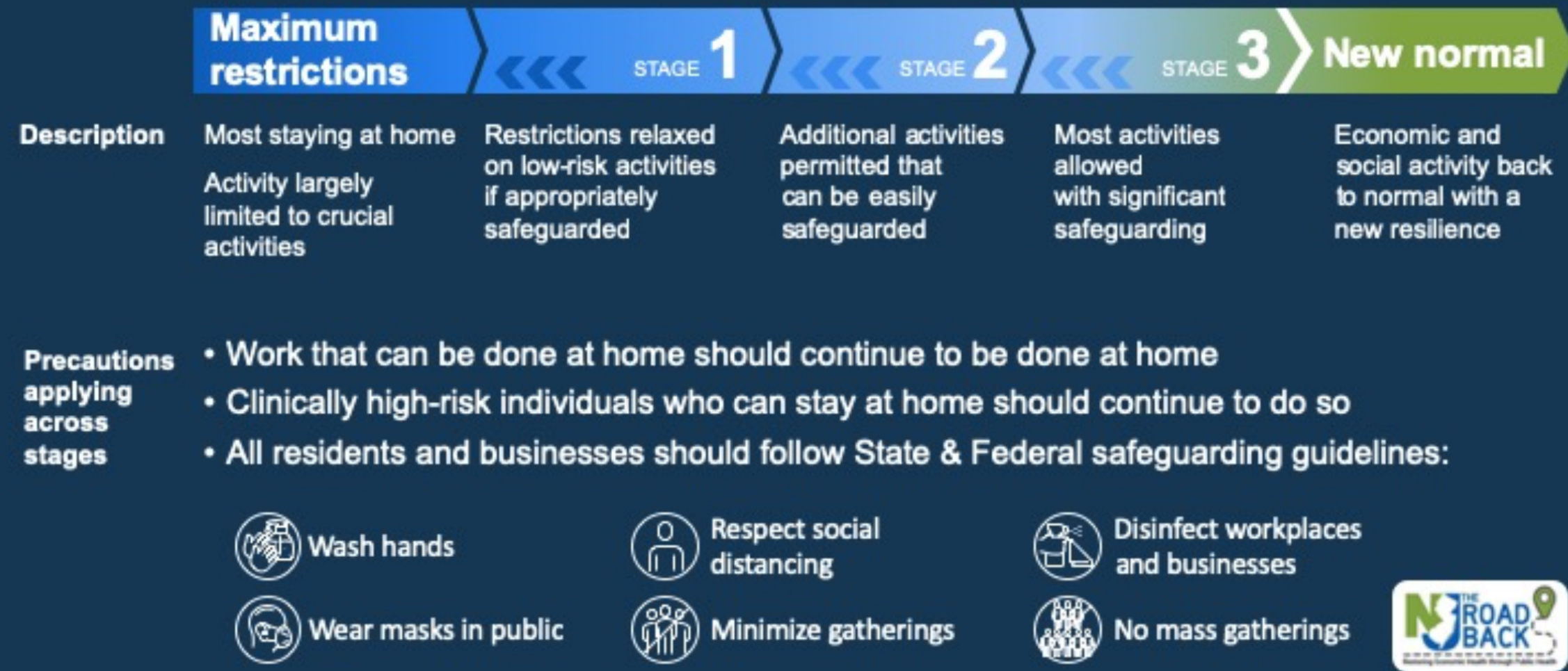
STATE OF NEW JERSEY

Timeline of Events

- **March 17, 2020** - Schools closed for two weeks
- **March 26, 2020** - School closure extended to April 17
- **April 8, 2020** - Gov. Murphy closes school indefinitely
- **May 4, 2020** - Gov. Murphy closes school for remainder of school year
- **June 26, 2020** - Gov. Murphy releases The Road Back

State of New Jersey

The Road Back: Moving Forward Cautiously



Hammonton Public Schools

Maximum restrictions	STAGE 1	STAGE 2	STAGE 3	New normal
FULLY VIRTUAL	FULLY VIRTUAL	HYBRID	EXPANDED HYBRID	TRADITIONAL SCHOOL DAY
All students and faculty work remotely	All students and faculty work remotely	Combination of In-Person Learning and Virtual Learning to the extent allowable by Executive Order	Combination of In-Person Learning and Virtual Learning to the extent allowable by Executive Order	All Students and faculty return to In-Person Learning to the extent allowable by executive order. An Expanded Hybrid is still in consideration

STATE OF NEW JERSEY

Reopening Plan NJDOE

Consists of Four Guiding Principles

- Conditions for Learning
- Leadership and Planning
- Policy and Funding
- Continuity of Learning

Districts must develop reopening plans that adhere to minimum standards established

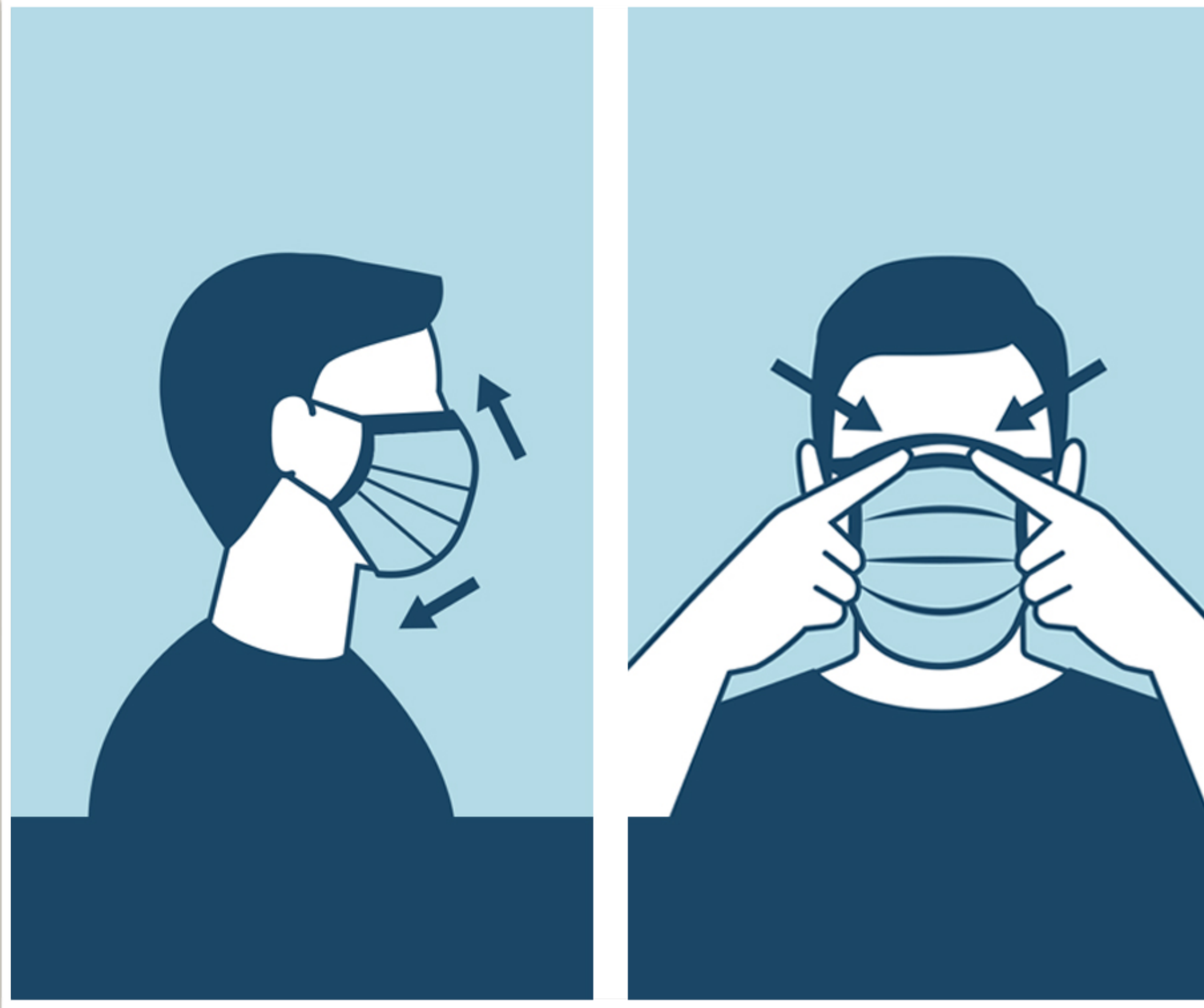
- Plans must include in-person instruction
- Must be able to convert to all remote if a health emergency is declared.



HAMMONTON PUBLIC SCHOOLS

Conditions for Learning

- Health and Safety
- Screenings
- Contact Tracing
- Facilities Cleaning Practices
- Classrooms
- Transportation
- Entry, Exits, Traffic Patterns



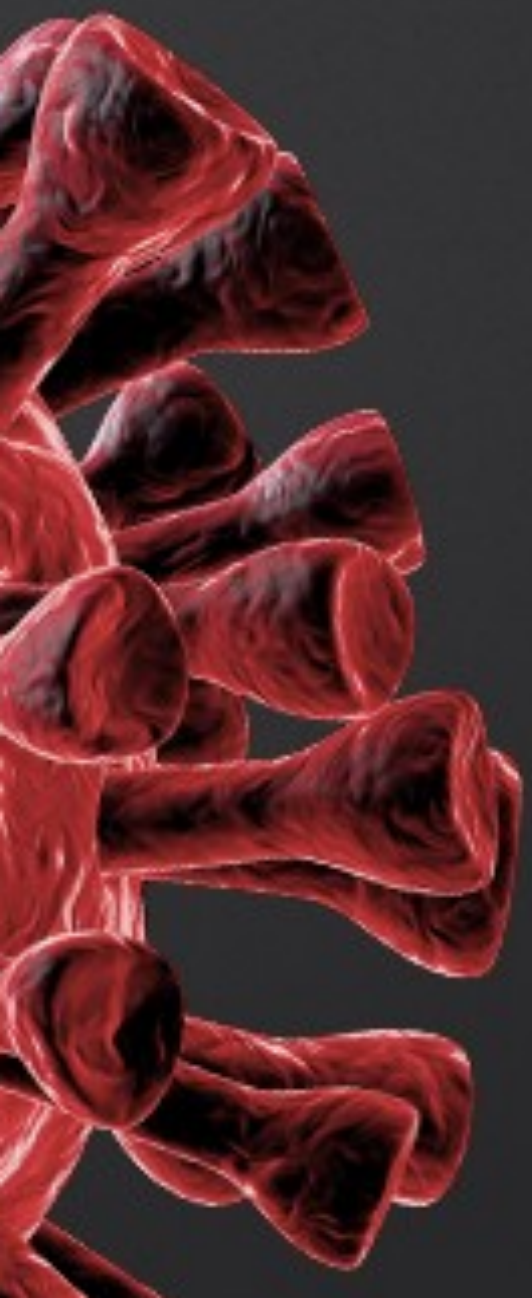
HAMMONTON PUBLIC SCHOOLS

Health and Safety

- Hand sanitizing stations installed in all classrooms, offices and entrances
- Sanitizing wipes in all classrooms
- Masks are required for students (except when medically unable to wear and during lunches)
- All staff required to wear masks at all times
- All visitors required to wear face masks

CORONAVIRUS

SCREENINGS



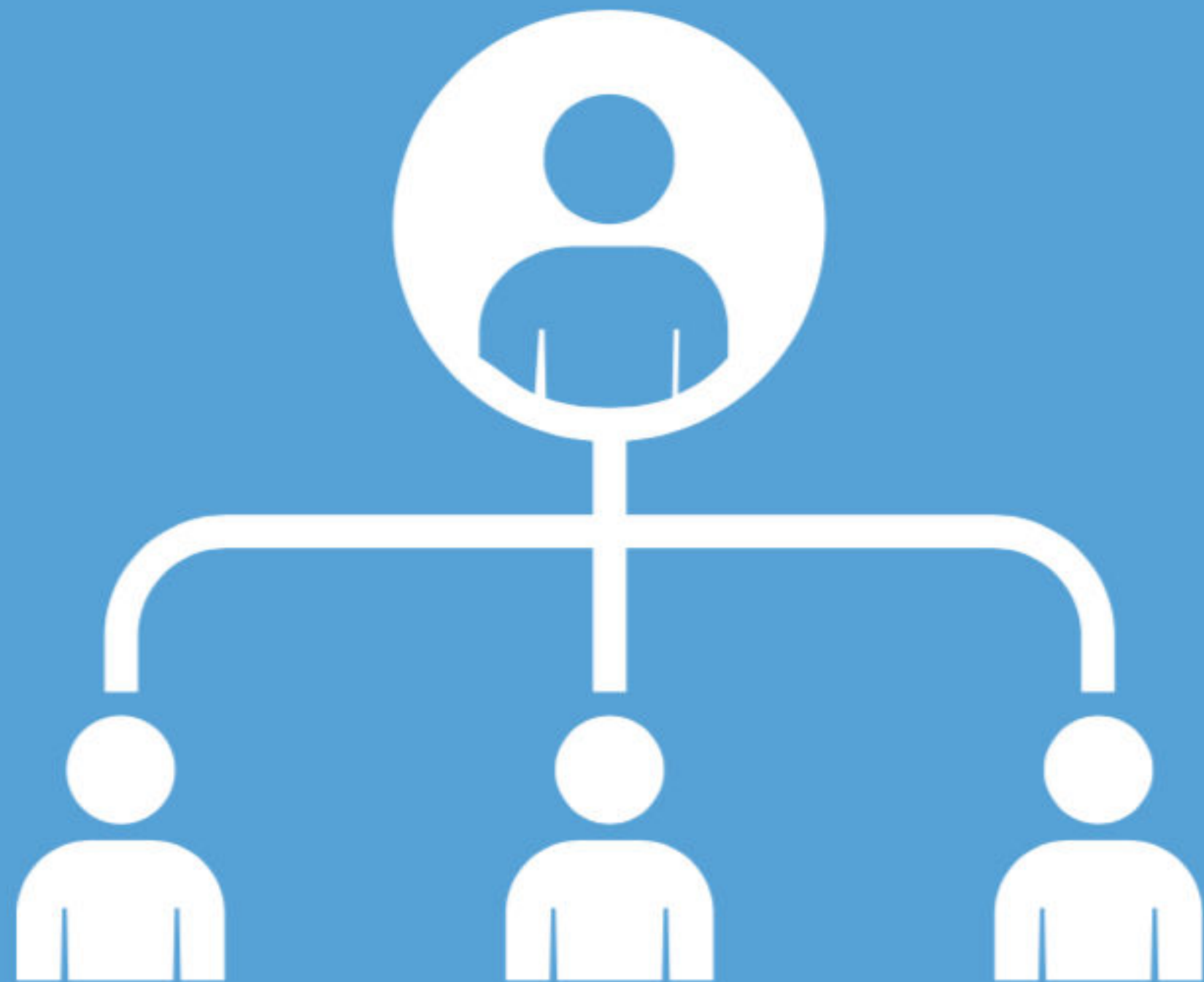
HAMMONTON PUBLIC SCHOOLS

Screenings

- All parents will be required to screen children for symptoms prior to sending to school
- All staff will be required to complete screening questions prior to entering schools
- Isolation rooms established in each building for symptomatic individuals
- Temperature screenings may be conducted by staff
- Coordinate with Dept. of Health for positive COVID-19 cases

CONTACT TRACING

Reaching out to anyone who came into direct contact with an individual who tested presumptive positive with COVID-19 to see if they have developed symptoms and if they need to be tested.



HAMMONTON PUBLIC SCHOOLS

Contact Tracing

In consultation with the Atlantic County Department of Health, contact tracing will be completed.

The Division of Public Health will conduct the investigation; however, the school may be asked to provide additional information regarding close contacts of the positive case.

School nurses will work closely to identify additional contacts.

Policy 2111.6 Contact Tracing and Screening identifies school nurses as the point of contact with the Department of Health in addition to guidance from the school physician.



HAMMONTON PUBLIC SCHOOLS

Facilities Cleaning Practices

Procedures and checklists have been established for routine and disinfecting protocols for classrooms, lavatories, cafeterias, gymnasium, common areas and water fountains.

Buildings will be cleaned daily with additional sanitizing and disinfecting completed on Wednesdays.

Bathroom occupancy will be limited through hall monitors and classroom assignments. Bathrooms will be sanitized multiple times throughout the day.

Electrostatic Sprayers were purchased to clean and sanitize buildings and buses.



HAMMONTON PUBLIC SCHOOLS

Classrooms

- Classrooms measured to calculate 6 feet of separation for desks - 50% classroom capacity
- All classrooms will have 3 plexiglass desk shields to provide additional separation of students if needed
- All elementary students will have own classroom supplies (pencils, crayons, glue sticks, markers, etc.) Specials will be taught in classrooms.
- Locker rooms will be closed.



HAMMONTON PUBLIC SCHOOLS

Transportation

- Social distancing will be attempted with 50% capacity on buses
- All students must wear masks on buses
- Buses will be sanitized between runs
- Students may have assigned seats
- Students will enter schools upon arrival



HAMMONTON PUBLIC SCHOOLS

Entry, Exits, Traffic Patterns

- Traffic patterns in hallways and one-way stairwells
- Limited use of lockers-arrival and dismissal
- Social distancing markings on floor in cafeterias and offices
- Cafeteria tables cleaned after each lunch period
- Multiple entrances and exits used to avoid large gatherings



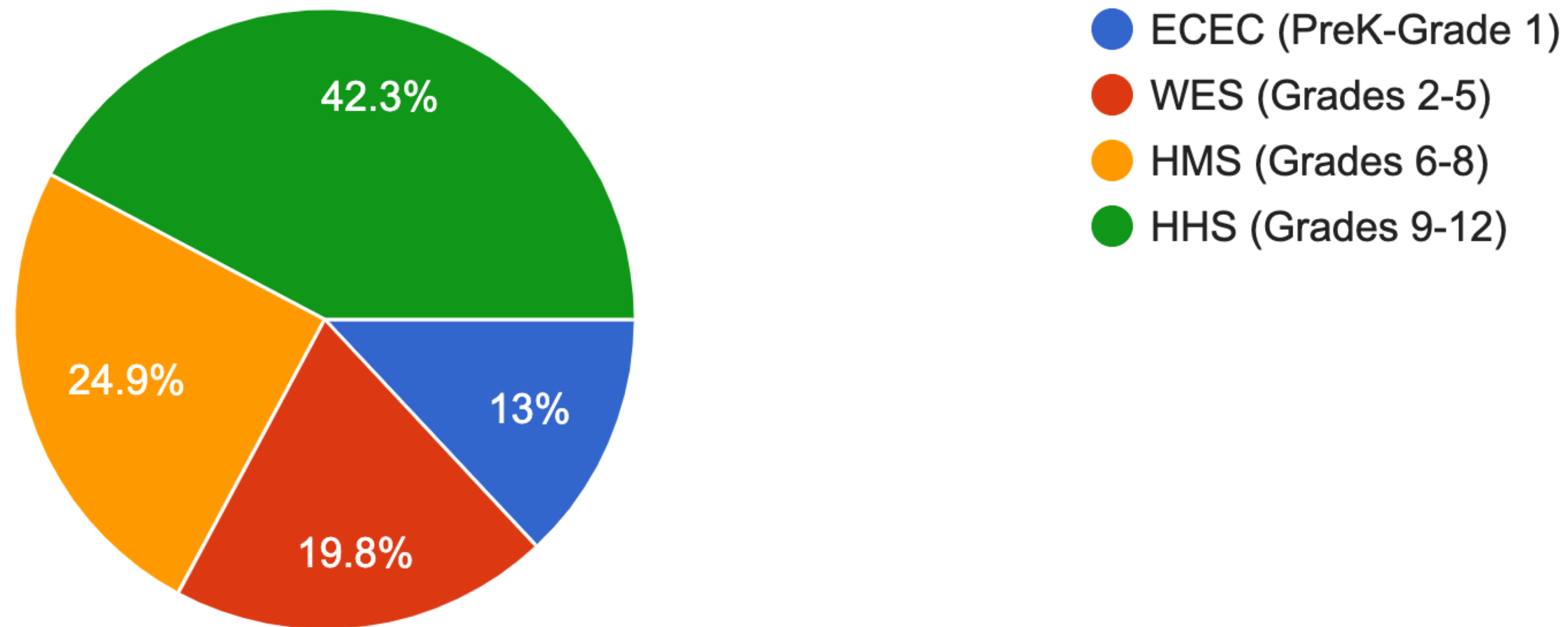
HAMMONTON PUBLIC SCHOOLS

Leadership and Planning

- Survey Results
- Stakeholders Input
- Scheduling
- Full-Time Remote Learning
- Scheduling
- Student & Parent Expectations
- Academic Supports

Registration Survey Results

School student will be attending in the fall:
2,768 responses

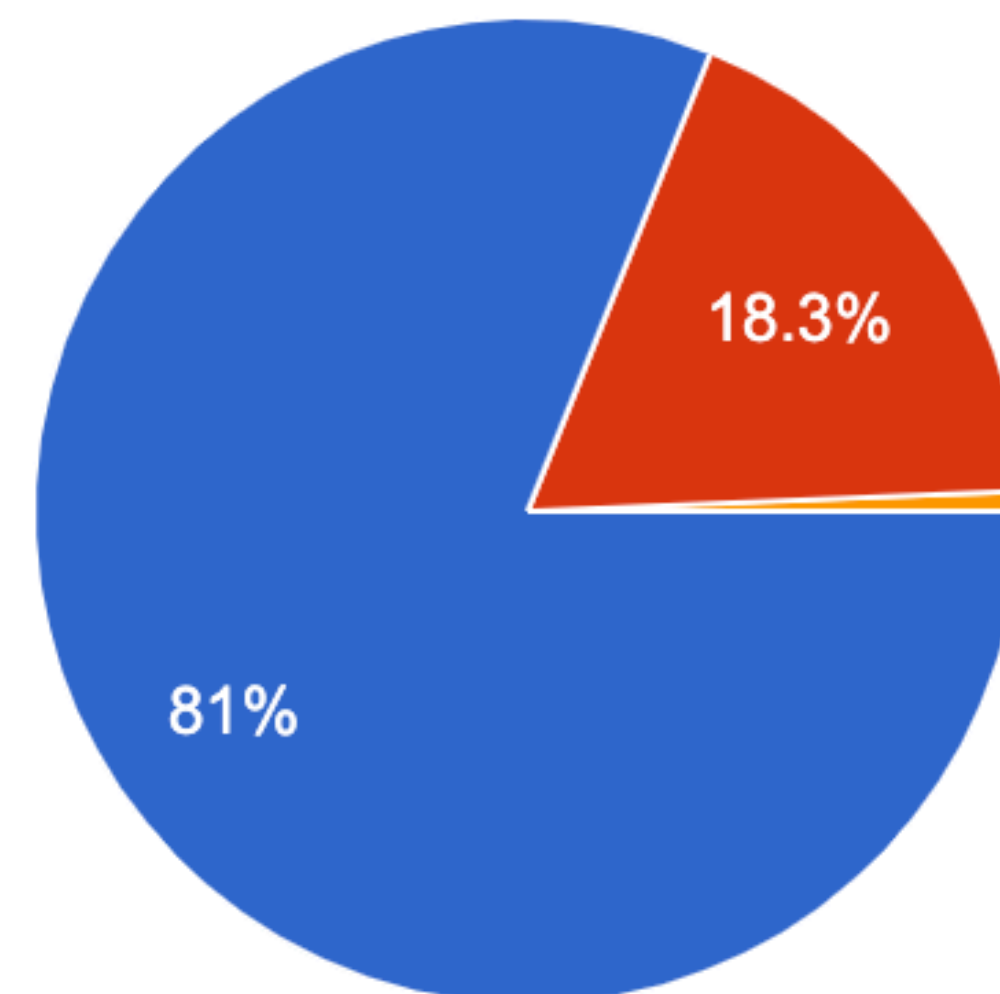


Registration Survey Results

In order to maintain social distancing guidelines, a hybrid model of in-person and virtual learning may be needed. Half of the students would attend school two-days per week with virtual instruction on the days not attending in person. The schedule would be the same for each week to provide consistency. If we utilize an A/B rotation to operate at 50% capacity for each building and classroom, which option will you be choosing for your child?



2,768 responses

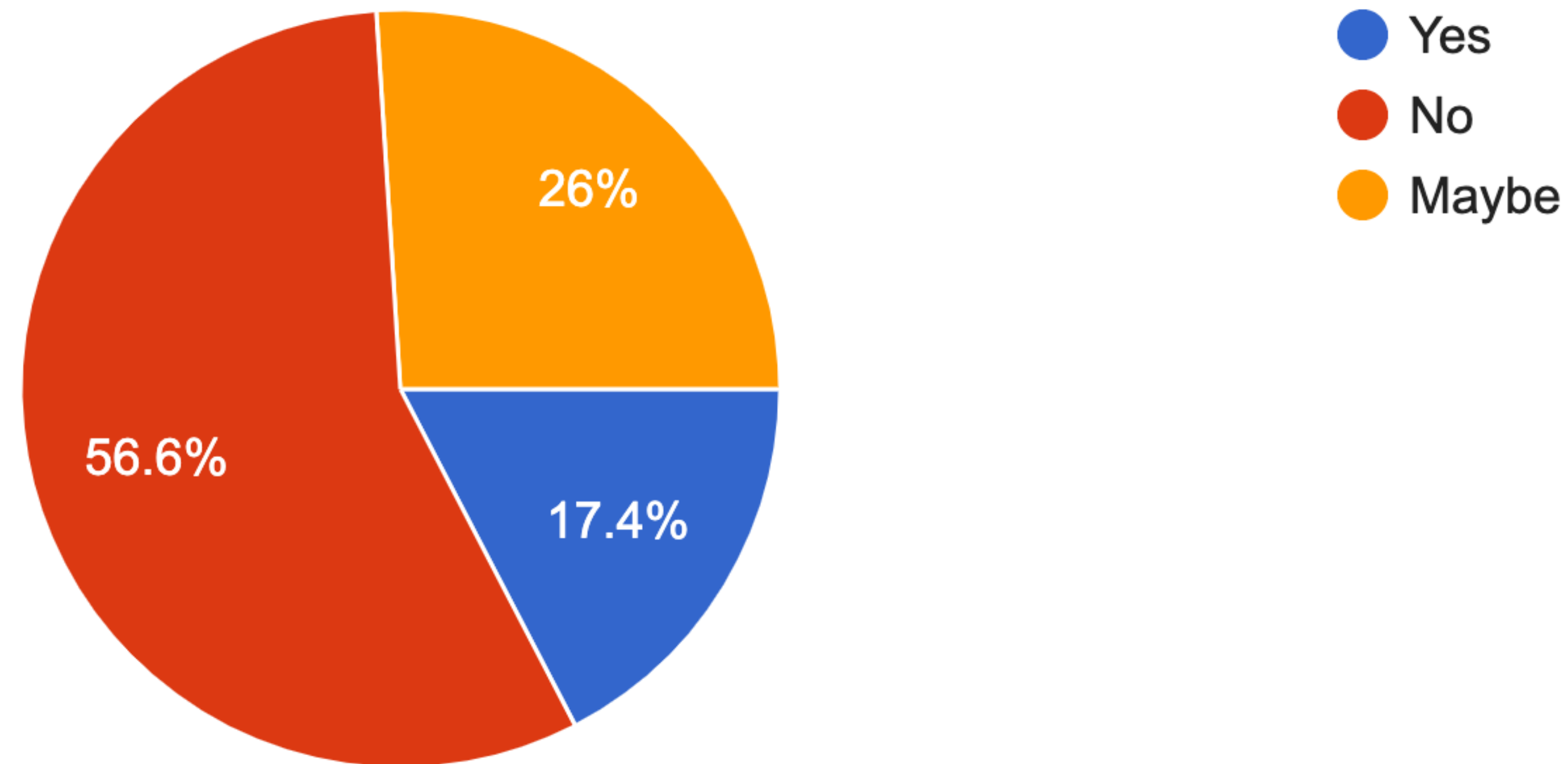


- A/B Hybrid where my child will attend in person two days per week and virtual instruction will be provided three days per week. I understand that face mask...
- If permitted by NJDOE, I prefer that my child receives all instruction remotely (no in-person instruction). I understand that I will be responsible for my child followi...
- I choose to home-school my child. I understand that my child will need to be withdrawn from the district.

Registration Survey Results

Do you anticipate your child having difficulty wearing a mask at school?

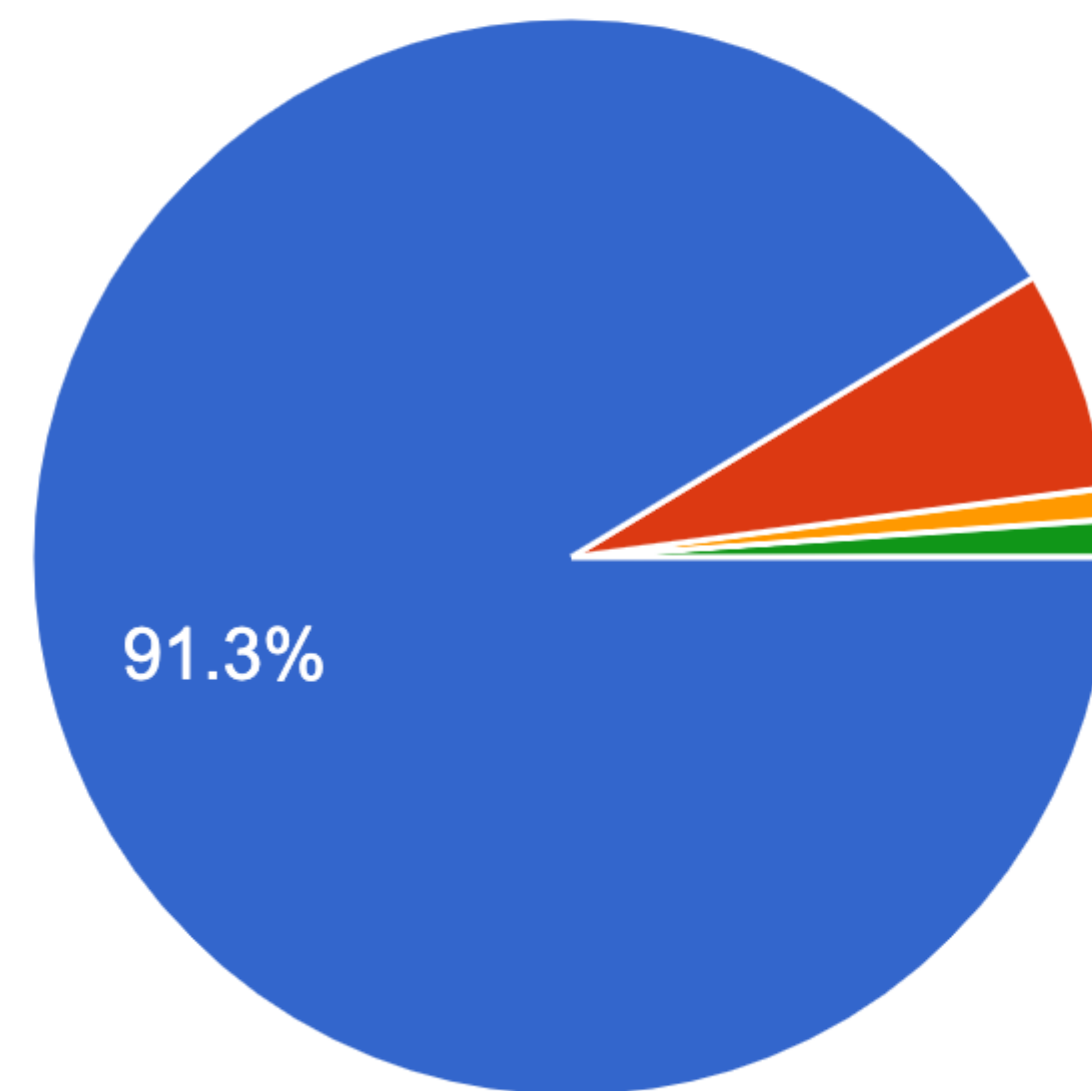
2,768 responses



Registration Survey Results

All students in grades K-12 will be provided with a device for the 2020-2021 school year. Please check the appropriate response to indicate your internet connectivity.

2,768 responses



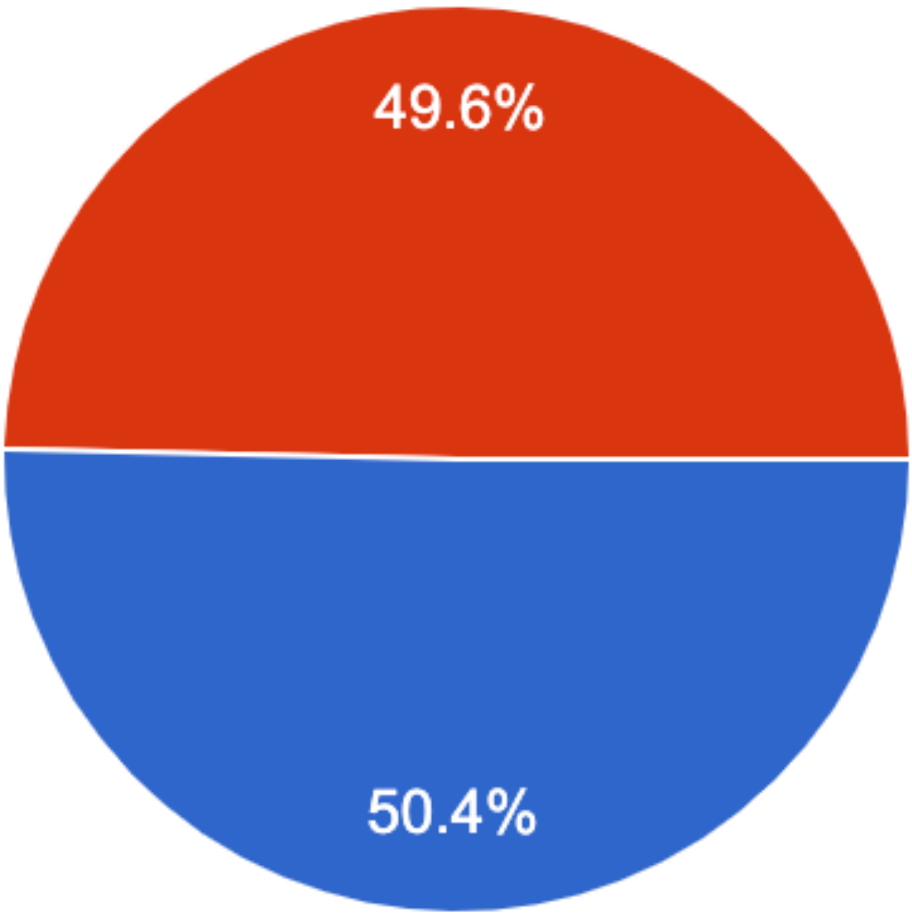
- We have appropriate Wi-Fi access.
- We have access, but lack high speed connectivity.
- We have a hotspot or other technology to allow access.
- We do not have access.

Registration Survey Results

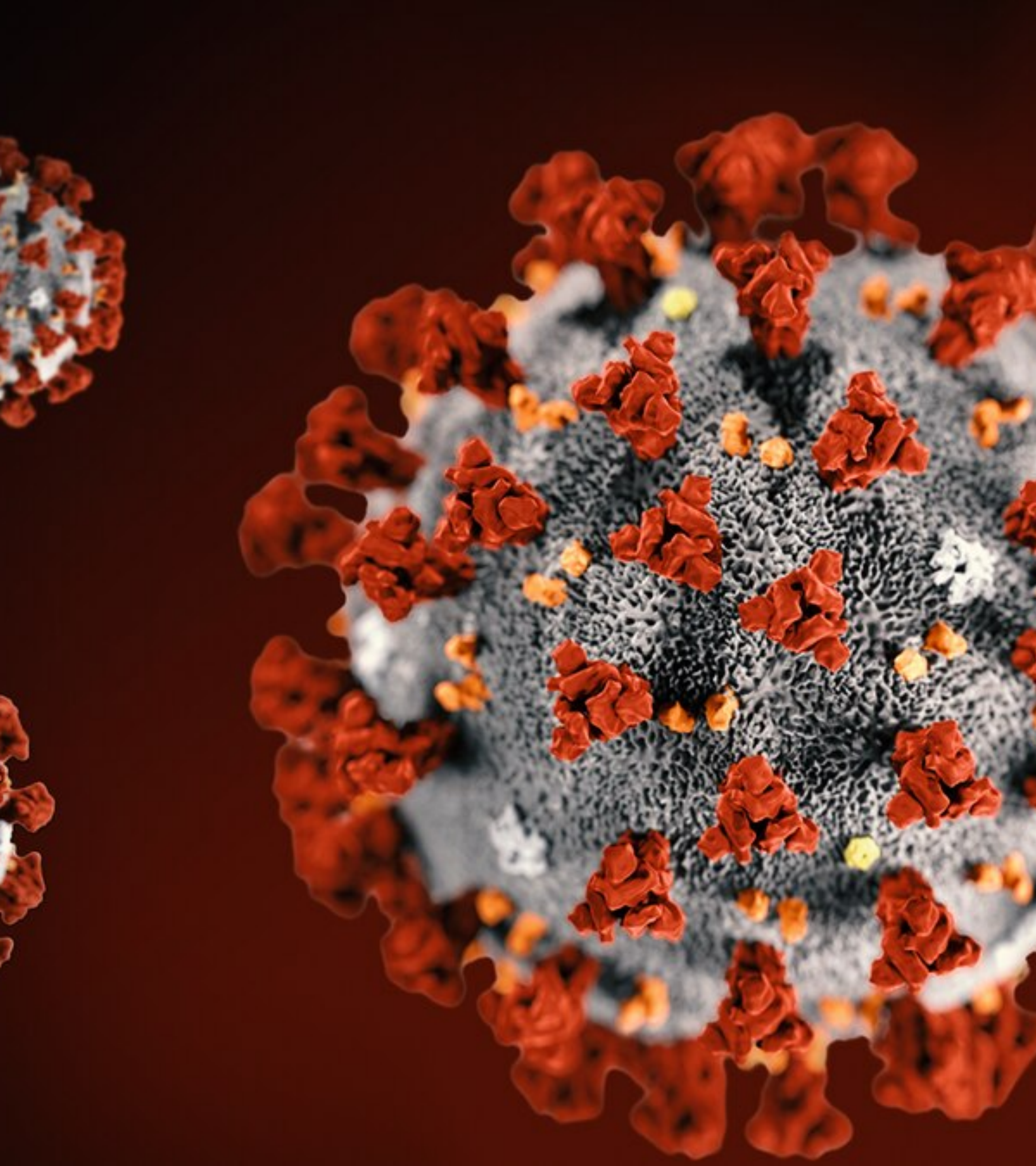
Transportation poses a major challenge to re-open schools. In order to effectively develop routes, please indicate your transportation needs. All students that ride a bus will need to wear a face mask as social distancing will not be able to be achieved. Minimally, 25 students will be on a bus for each route. If you are entitled to district bus services, please select the transportation option you will most likely utilize daily.



2,697 responses



- My child will utilize district-provided bus services even if proper social distancing is not maintained. I understand that my child will be expected to wear face coverings while on the bus.
- I will choose to transport my child.



HAMMONTON PUBLIC SCHOOLS

Stakeholders Input

Restart Committees - Building Level and District Level

Restart Committees were formed at each building along with the district level to coordinate the overall reopening plan.

Committee membership consisted of building and district level administration, teachers, parents, board of education members, union leadership and community members.

Pandemic Response Teams

Each building established a Pandemic Response Team to oversee implementation of the reopening plan, adjusting protocols and procedures as necessary, providing support and training, and reviewing school health data.

Membership of teams consisted of building administrators, parents, nurses, teachers, counselors and CST members.

Scheduling

Hybrid Model-A/B Cohorts

- Students will be separated into two cohorts. **Families will have the same schedule.**
 - Class sizes will be reduced to 50%.
 - Students will receive 2 days of in-person instruction and 3 days of virtual instruction.
 - Students will alternate following an A/B schedule.
 - Students in Cohort A (Last names A-K) will attend in-person on Mondays and Thursday, and virtually on Tuesdays, Wednesdays and Fridays.
 - Students in Cohort B (Last names L-Z) will attend in-person on Tuesdays and Fridays, and virtually on Mondays, Wednesdays and Thursdays.
 - Wednesdays will be used to provide time for teachers to develop interactive video lessons for virtual instruction and to meet with remote only students.
 - Students will be required to follow a schedule whether in-person or virtually.
 - PreK Classrooms and Special Education students enrolled in a self-contained setting will receive in-person instruction 4 days/week. Wednesday will be virtual instruction. This will allow for access to in-person related services.
-

Full-Time Remote Learning

Students receive instruction remotely through interactive recorded video lessons and live meetings using various platforms such as Google Meet. Students will be required to complete a minimum of 4 hours of work per day (including virtual meetings, video lessons and assignments).

Grades 6-12: Students will have an assigned teacher/mentor for daily check-ins at designated times and will be expected to be available during school hours. Wednesdays will have scheduled Google meetings with classroom teachers of approximately 20 minutes in length per class.

Grades PreK-5: Students will be assigned to a remote-only classroom teacher. Teachers will develop schedules based on student needs and will meet with students daily.

Students and parents will have access to classroom instructors and counselors daily through email. Parents are encouraged to enroll in parental notifications through Google Classroom and Remind.

Scheduling

Monday	Tuesday	Wednesday	Thursday	Friday
Cohort A In-Person	Cohort A Remote Learning	ALL STUDENTS REMOTE LEARNING	Cohort A In-Person	Cohort A Remote Learning
Cohort B Remote Learning	Cohort B In-Person		Cohort B Remote Learning	Cohort B In-Person
Cohort C In-Person	Cohort C In-Person		Cohort C In-Person	Cohort C In-Person
Cohort R Remote Learning	Cohort R Remote Learning		Cohort R Remote Learning	Cohort R Remote Learning

Cohort A- Students attend in-person full days on Mondays and Thursdays and will be learning remotely on Tuesday, Wednesdays and Fridays.

Cohort B- Students will attend in-person full days on Tuesdays and Fridays and will be learning remotely on Mondays, Wednesdays and Thursdays.

Cohort C-Students in PreK classrooms and self-contained special education settings will attend in-person full days on Mondays, Tuesdays, Thursdays and Fridays and will be learning remotely on Wednesdays.

Cohort R- Students will be learning remotely full-time Mondays-Fridays.

Student and Parent Expectations- Remote Learning Days

During remote learning days, students and parents are to abide by the following:

Student Expectations:

- Develop a plan to complete assignments daily.
- Work independently and be responsible to complete assignments.
- Login daily and complete assignments during designated school hours.
- Complete all virtual lessons posted on Google Classroom.
- Check progress, grades and meet deadlines.
- Abide by all school rules, policies and procedures.
- Practice academic integrity and honesty.

Parent/Guardian Expectations:

- Log into the online program with your child so that you can become familiar with the system.
 - Help your child organize and prepare for remote learning. Make sure that you have reliable high-speed internet. Contact your child's school if internet connectivity is an issue.
 - Monitor your child's progress and check grades.
 - Register for Remind and Google Classroom email notifications to assist your child with time management and due dates.
 - Contact instructor first if there are questions regarding assignments, grades, etc.
 - Monitor and maintain academic integrity.
-



HAMMONTON PUBLIC SCHOOLS

Academic Supports

- Using ESSA Funding, after school remote tutoring will be available by appointment in Language Arts and Mathematics.
- Information will be shared in late September.
- All teachers will have scheduled office hours for individual assistance.



HAMMONTON PUBLIC SCHOOLS

Curriculum

- Curriculum Information
- Staff Expectations
- Student Expectations
- Parent Engagement

Curriculum

District curriculum is aligned to the NJSLS and include strategies for English language learners, students with IEP and 504 plans, enrichment and RTI.

The same curriculum will be presented to all students with learning activities adapted for hybrid and all remote instruction.

Curriculum and pacing will be adjusted to allow for teachers to remediate any identified learning loss as a result of the 2019-2020 school closure.

Curriculum

Hybrid Instruction:

- A flipped, blended instructional model will be implemented with three virtual and two in-person lessons each week.
 - The virtual days will consist of lectures, direct instruction, presentations, guided notes, independent practice, etc. Lessons will be pre-recorded by teachers weekly.
 - Each virtual class will require students to complete an assignment to be turned in through Google Classroom by the end of the school day.
 - In-person instruction will focus on student-centered activities such as reinforcement of concepts, class discussions, guided practice, lab activities, assessments, and differentiated instruction that includes reteaching for students who require support.
-

Curriculum

Full-Time Remote Instruction:

- Students will have access to the same virtual lessons as the hybrid students.
 - Differentiated tasks will be assigned to students through Google Classroom.
 - Remote students in grades 6-12 will attend scheduled meetings with each of their teachers on Wednesdays to receive differentiated instruction that will include reteaching as needed, as well as be assigned a mentor to check in on a regular basis.
 - Remote students in grades PreK-5 will be assigned to a remote only homeroom with one teacher to provide all instruction through Google Meet and recorded instructional videos.
-

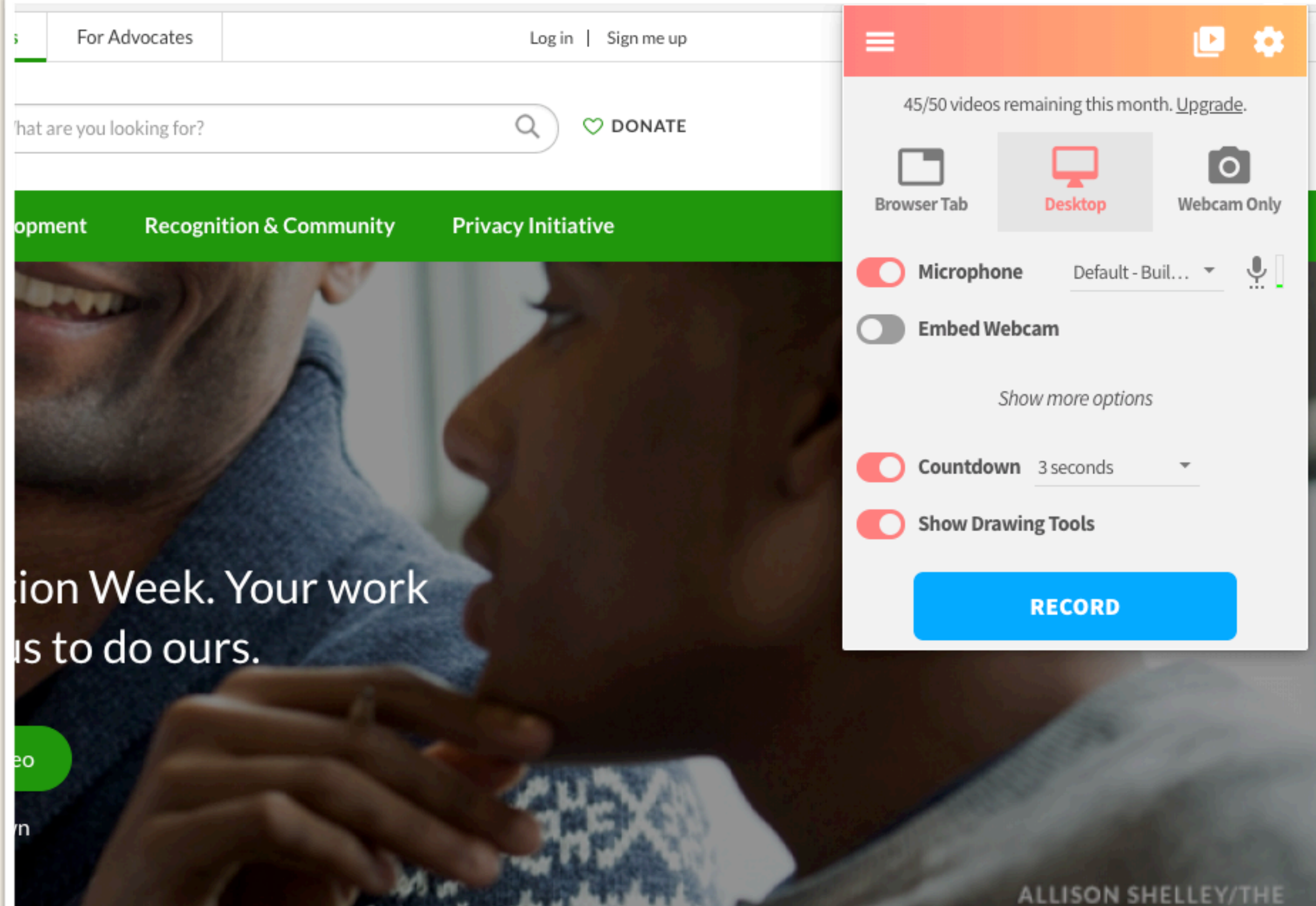


HAMMONTON PUBLIC SCHOOLS

Staff Expectations

- Teachers will develop interactive instructional videos for students for remote learning.
- All assignments will be maintained through Google Classroom.
- Google Classroom Calendars will be available on Teachers Pages on website for parent access.
- Schedules will be maintained. Specific times will be scheduled to meet with remote only students.
- Differentiated instruction will be provided on in-person days to provide targeted instruction.
- For grades 6-12, staff will be assigned remote only students and serve as mentors to provide assistance.



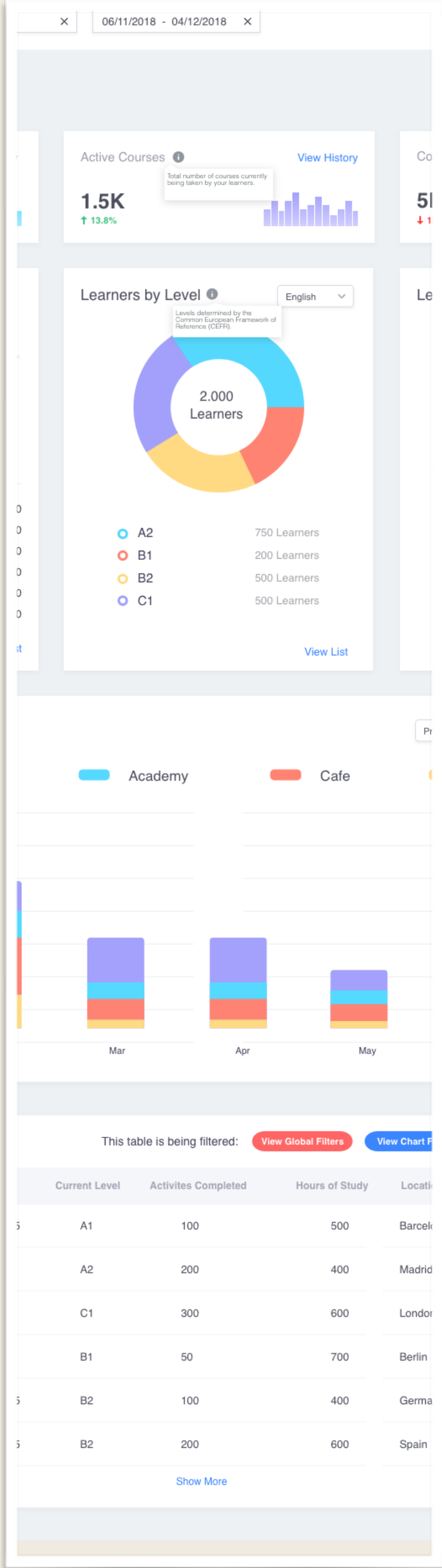
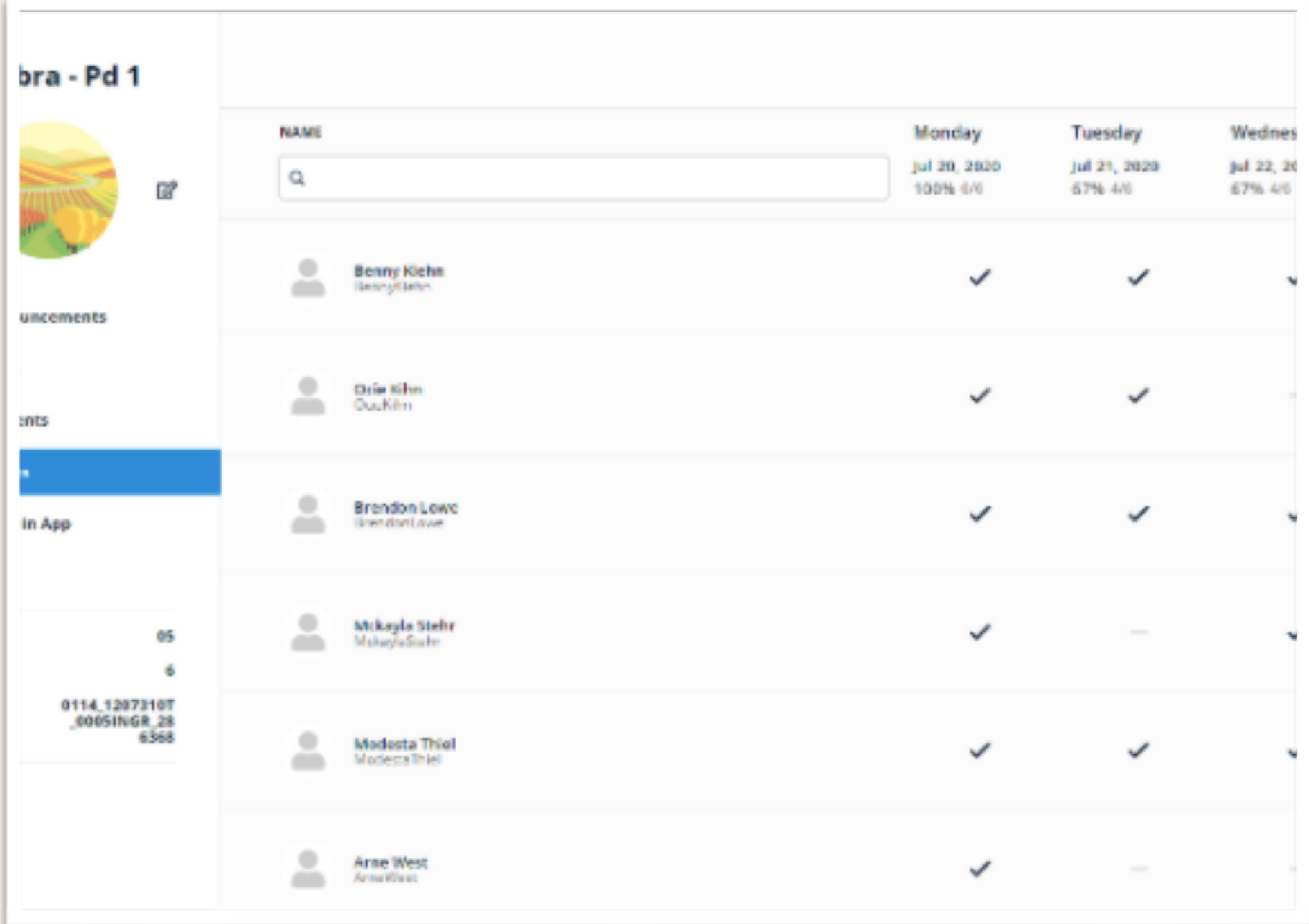
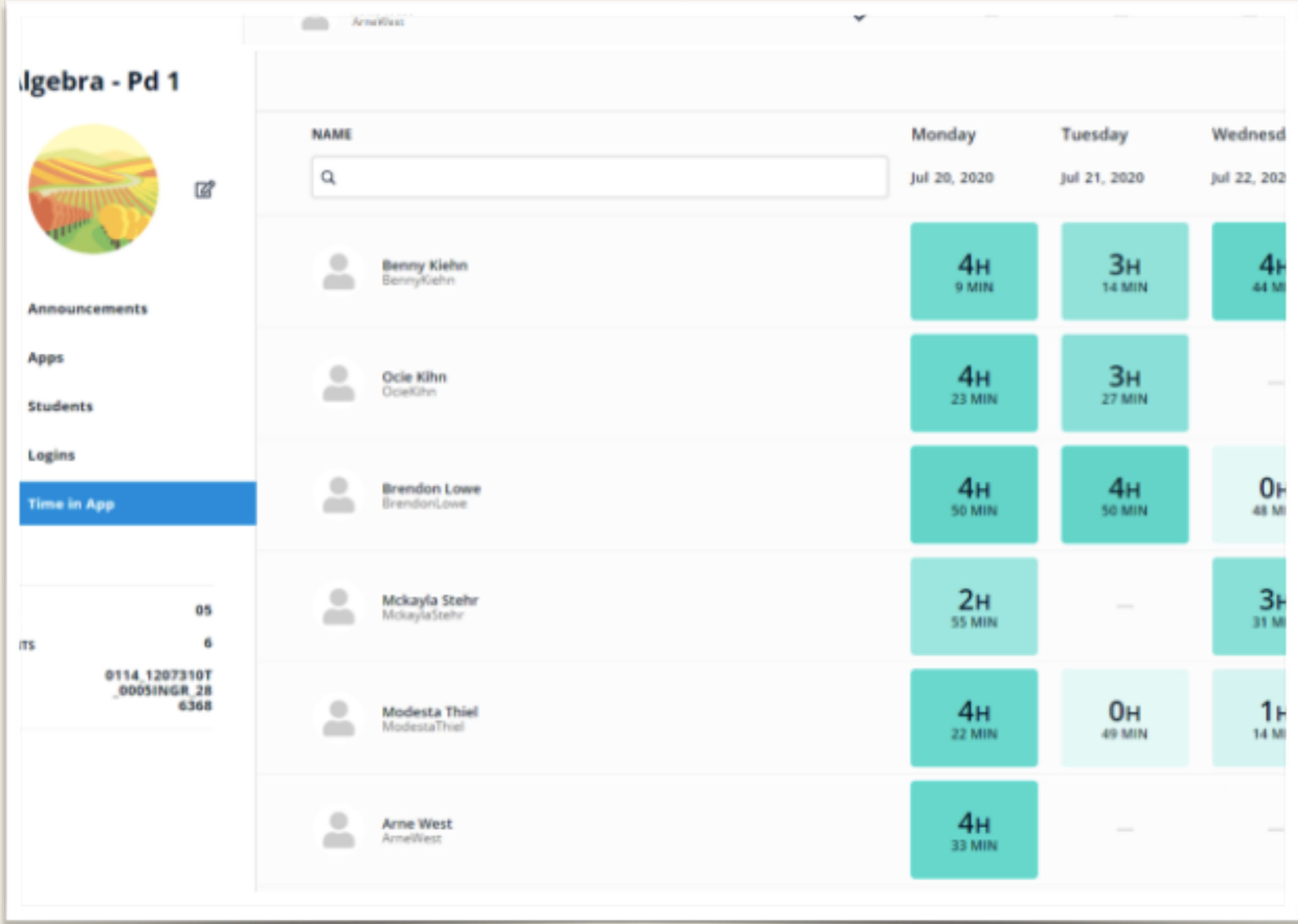


HAMMONTON PUBLIC SCHOOLS

Staff Expectations

- Additional on-line learning platforms have been purchased to provide additional learning opportunities for students and educational tools for teachers.
 - Screencastify
 - IXL
 - Defined Learning
 - Google G Suite
 - Pear Deck
 - On-line textbooks and supports





HAMMONTON PUBLIC SCHOOLS

Student Expectations

- Students will be required to sign into virtual backpack for remote instruction.
- Students will be required to follow a schedule.
 - Assignments will be due by the end of the school day.
- Remote only students will be required to meet with teachers/mentors at designated times.

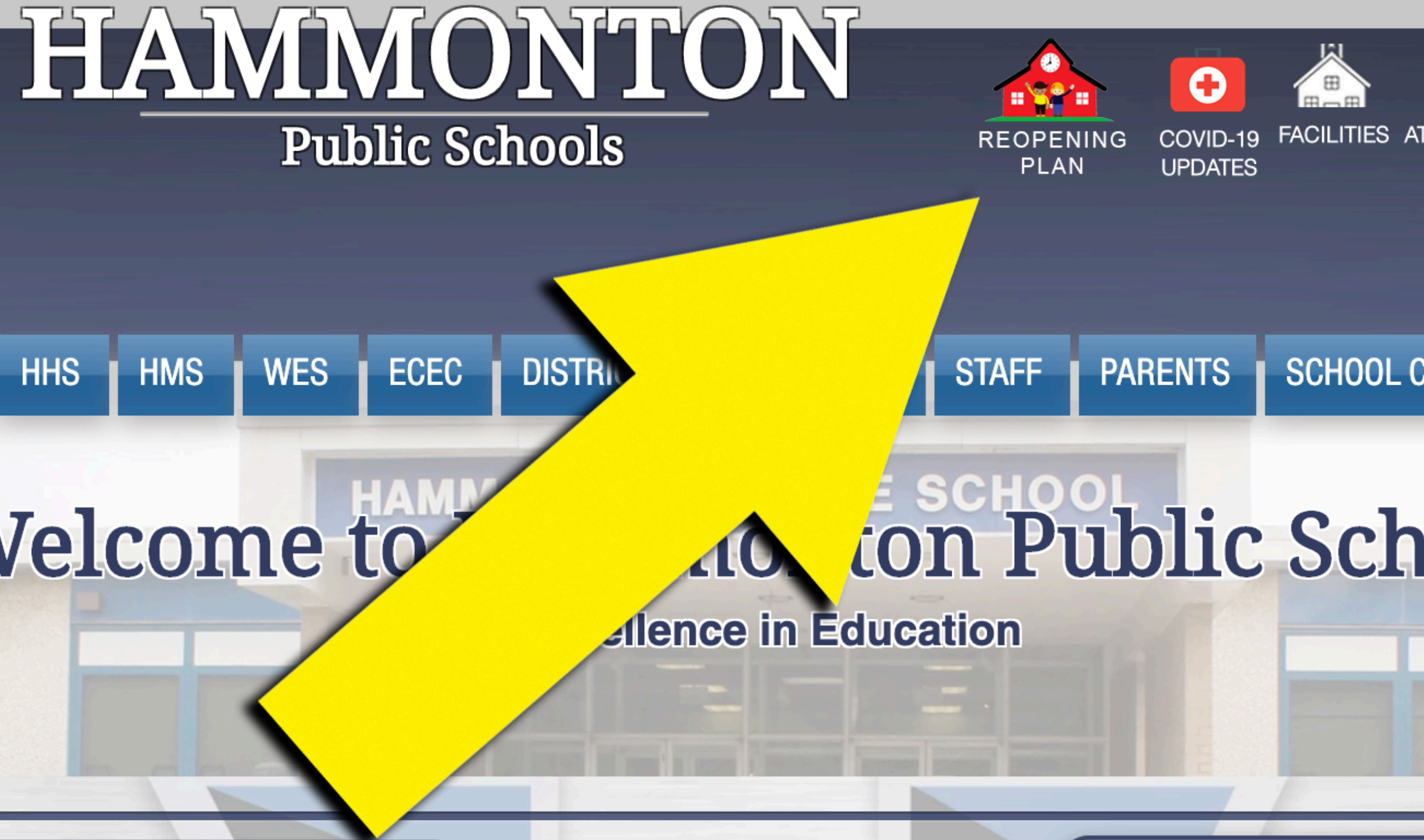


HAMMONTON PUBLIC SCHOOLS

Parent Engagement

- Parents are encouraged to enroll in email notifications through Google Classroom and Remind.
- Parent Portal is available in an app.
- Parents will be required to acknowledge health screening prior to sending child to school.
- Videos will be available on the District website to demonstrate how to access various applications for parents to monitor students progress.





HAMMONTON PUBLIC SCHOOLS

Reopening Information

- The District website contains a tab at the top of the home page for all information regarding the opening of schools.
- An email address is also available for community members to ask for clarifications:
questions@hammontonps.org
- Frequently Asked Questions sheets will be developed to assist families with the new schedules and formats.



HAMMONTON PUBLIC SCHOOLS

Final Thoughts

- Reopening Plans were developed to be utilized whether schools open or are closed for health related reasons.
- Administrators have spent the majority of the summer preparing class lists that will remain constant regardless of schools being open or closed.
- We are prepared to adjust to all remote instruction at any time.
- We are also prepared to welcome all of our students back to our schools when health conditions are safe to do so.
- Thank you for your patience and support.