



Department of
Environmental
Conservation

FACT SHEET

State Superfund Program

Granville MGP Site
85 Main Street
Granville, NY 12832

SITE No. 558021

NYSDEC REGION 5

February 2019

Cleanup Action to Begin at State Superfund Site

Where to Find Information:

Project documents are available at the following location(s) to help the public stay informed.

Pember Library

33 Main Street
Granville, NY 12832
(518) 642-2525

NYSDEC

625 Broadway
Albany, NY 12233
(518) 402-9589

Who to Contact:

Comments and questions are always welcome and should be directed as follows:

Project-Related Questions

John Miller, Project Manager
NYSDEC
625 Broadway, 12th Floor
Albany, NY 12233-7015
(518) 402-9589
John.miller@dec.ny.gov

Health-Related Questions

Wendy Kuehner
NYSDOH
Empire State Plaza Corning Tower
Room 1787 Albany, NY 12237
(518) 402-7860
bee@health.ny.gov

For more information about New York's
State Superfund Program, visit:
www.dec.ny.gov/chemical/8439.html

Action is about to begin that will address contamination related to the Granville Manufactured Gas Plant (MGP) Site ("site") under New York's State Superfund Program. The site is located on North Street, approximately 0.25 miles north of the intersection of Main Street and North Street, in Granville, NY. The cleanup activities will be performed by New York State Electric and Gas Corporation (NYSEG) with oversight provided by the New York State Department of Environmental Conservation (NYSDEC). Documents related to the cleanup of this site are available at the location(s) identified to the left under "Where to Find Information."

Mobilization is about to begin for the project, with remedial activities expected to begin in March 2019 on NYSEG's property and progressing off-site in the summer (park/ballfields). The remedial work will require about two years to complete. Outreach to key stakeholders, including the mayor, local little league and Trout Unlimited, has been ongoing. A public availability session will be held before major remediation begins. The estimated cost to implement the remedy is approximately \$19 million.

Highlights of the Upcoming Cleanup Activities: The goal of the cleanup action for the site is to achieve cleanup levels that protect public health and the environment. The key components of the remedy are:

- Excavation and off-site disposal of soil and sediment on the Little League property, in the Mettawee River and on the former MGP Site. Contaminated materials are below the surface at the ballfield and do not pose an exposure risk to those playing on the field.
- Backfilling of excavated areas with soil that meets the specified soil cleanup objectives (SCOs). The specific SCOs vary by location (unrestricted use for ballfield/streambed, restricted residential use on MGP property).
- In-situ stabilization (ISS) of impacted soil on-site, outside of the former MGP operations area.
- Construction of a cover system on the site. The cover system will consist of a minimum of two feet of soil in the MGP operations excavation area and four feet of material in the ISS area.
- Installation of coal tar extraction wells to collect and remove contamination.
- Development of a Site Management Plan for the long-term maintenance of the remedy.
- Recording of an Environmental Easement for the institutional and engineering controls needed at the site.

STATE SUPERFUND PROGRAM

A site-specific health and safety plan (HASP) and a Community Air Monitoring Plan (CAMP) will be implemented during remediation activities. The HASP and CAMP establish procedures to protect on-Site workers and residents and includes required air monitoring as well as dust and odor suppression measures.

Next Steps: The remediation is expected to be implemented in three phases. The first phase would consist of ISS and excavation on the former MGP and NYSEG property. Phase II would consist of excavation in the river and on the little league property. Phase III would consist of ISS in remaining areas, site restoration and equipment demobilization.

NYSDEC will keep the public informed throughout the cleanup of the site. It is expected that a public availability session will be held during the remediation to update the public on the field activities.

After cleanup activities are completed, NYSEG will prepare a Final Engineering Report (FER). The FER will describe the cleanup activities that were completed and certify that cleanup requirements have been achieved or will be achieved.

Site Description: The site is located about 0.25 miles north of the intersection of Main Street and North Street in Granville, NY. The site is approximately 10 acres in size and is composed of three adjoining parcels owned by NYSEG. The southern portion of the site is wooded, while the northern half transitions from a wooded area into an open field containing the NYSEG Granville Operations Center. An earthen berm separates the wooded portion of the site from the open, northern portion. Access to the site is uncontrolled.

Additional site details, including environmental and health assessment summaries, are available on NYSDEC's Environmental Site Remediation Database (by entering the Site ID, 558021) at:

<http://www.dec.ny.gov/cfm/xtapps/derexternal/index.cfm?pageid=3>

Summary of the Investigation: The Remedial Investigation (RI) was conducted between 2008 and 2010. The RI field investigations included the collection and analysis of samples from surface and subsurface soil, sediments in the Mettawee River, soil vapor and groundwater.

The results of the RI indicate that subsurface soil and groundwater beneath the site have been exposed to coal tar. The contamination has migrated off-site through a highly

permeable gravel layer that lies approximately ten feet below the ground surface. The coal tar has spread to the north of the MGP site and to the west, under the Mettawee River and the adjoining portion of the Granville Little League property. Immediately north of the MGP, coal tar has migrated downward into bedrock.

State Superfund Program Overview: New York's State Superfund Program (SSF) identifies and characterizes suspected inactive hazardous waste disposal sites. Sites that pose a significant threat to public health and/or the environment go through a process of investigation, evaluation, cleanup and monitoring.

NYSDEC attempts to identify parties responsible for site contamination and require cleanup before committing State funds.

For more information about the SSF, visit:

<http://www.dec.ny.gov/chemical/8439.html>

We encourage you to share this fact sheet with neighbors and tenants, and/or post this fact sheet in a prominent area of your building for others to see.

Receive Site Fact Sheets by Email

Have site information such as this fact sheet sent right to your email inbox. NYSDEC invites you to sign up with one or more contaminated sites county email listservs at:

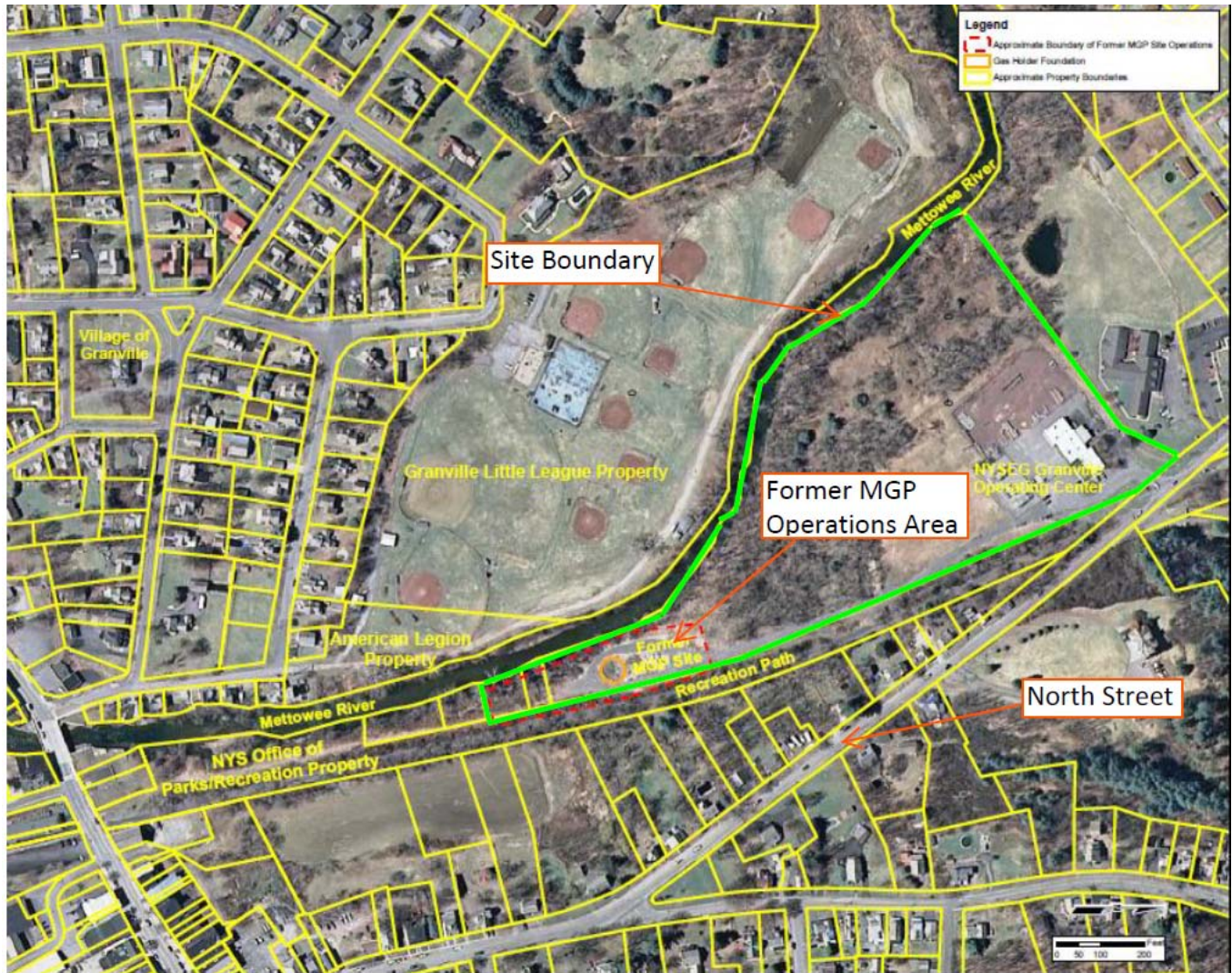
www.dec.ny.gov/chemical/61092.html

It's quick, it's free, and it will help keep you better informed. As a listserv member, you will periodically receive site-related information/announcements for all contaminated sites in the county(ies) you select.

Note: Please disregard if you have already signed up and received this fact sheet electronically.

STATE SUPERFUND PROGRAM

Site Location



Remedial Areas

