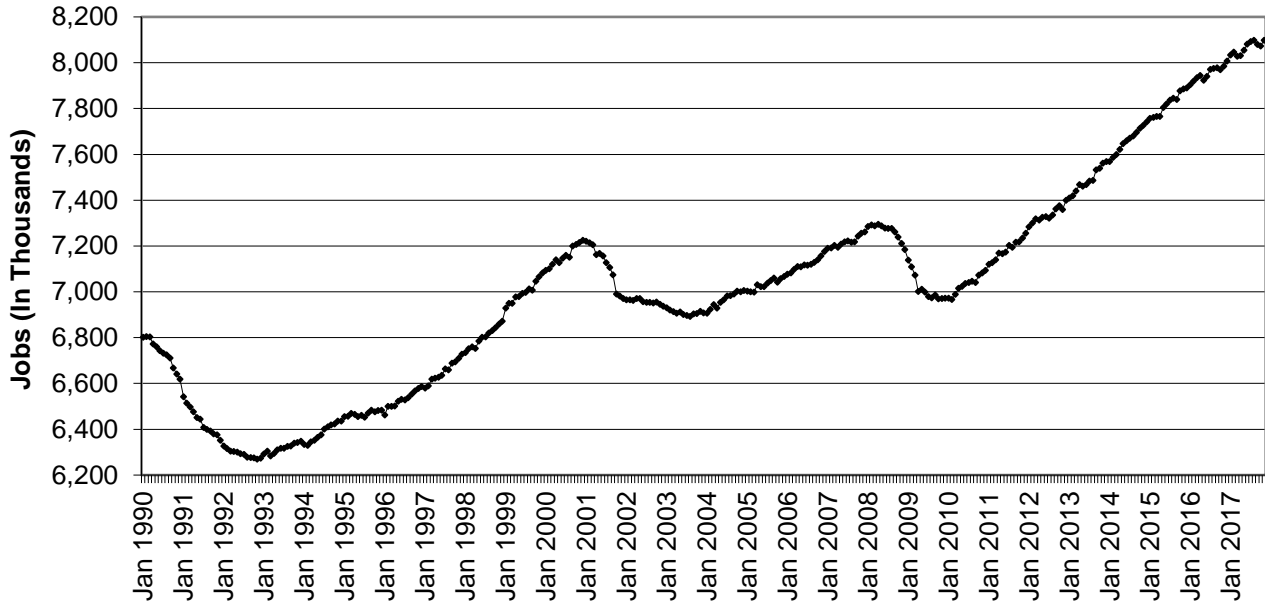
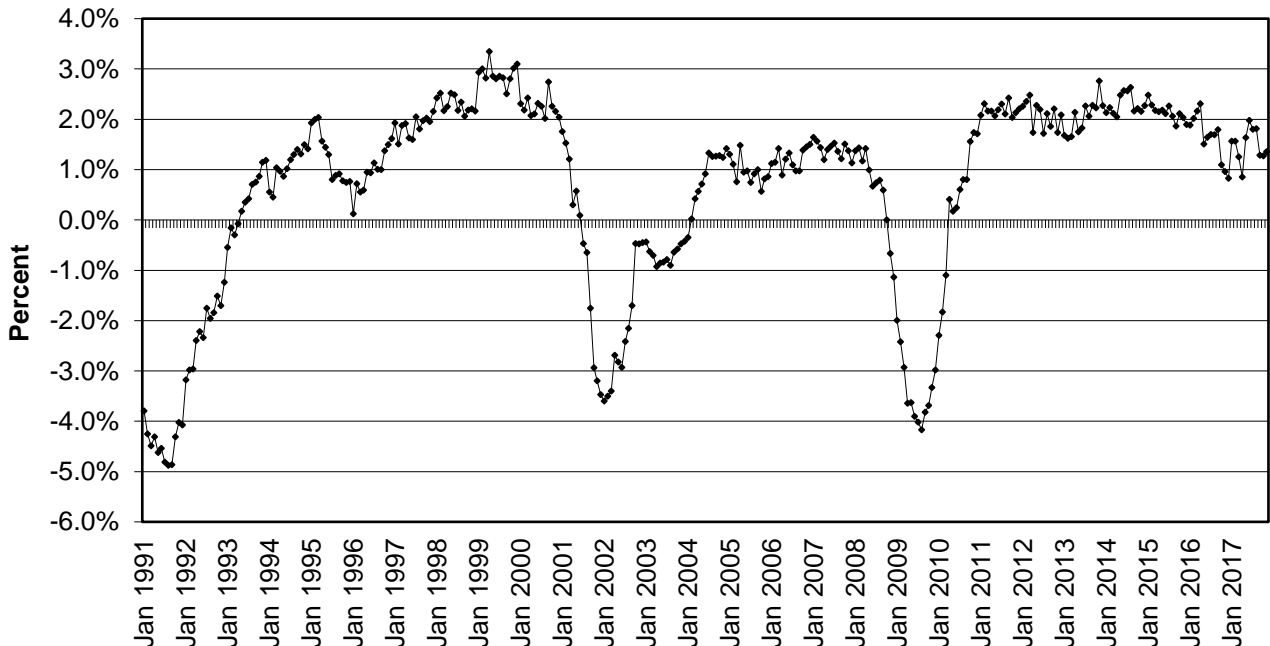


**CHART 1: PRIVATE SECTOR JOB COUNT**  
 (Seasonally Adjusted)  
**NEW YORK STATE**  
 JANUARY 1990 - NOVEMBER 2017



**CHART 2: OVER-THE-YEAR CHANGE IN PRIVATE SECTOR JOBS**  
 (Not Seasonally Adjusted)  
**NEW YORK STATE**  
 JANUARY 1991 - NOVEMBER 2017

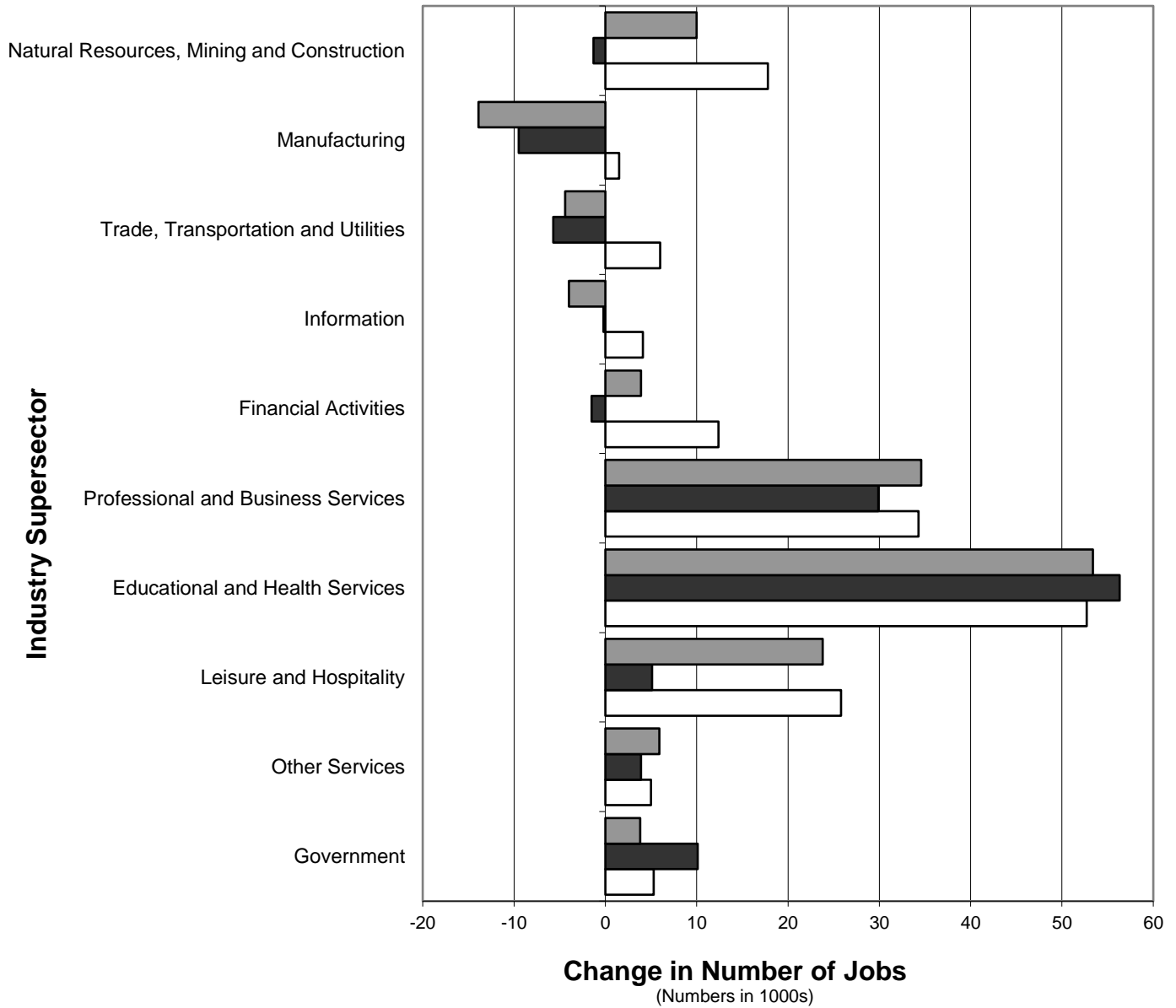


Note: The current private sector jobs series begins in January 1990; thus, over-the-year changes in the series start in January 1991.

**CHART 3: OVER-THE-YEAR CHANGE IN NONFARM JOBS BY SUPERSECTOR**

NEW YORK STATE  
(Not Seasonally Adjusted)

NOVEMBER 2014-NOVEMBER 2015, NOVEMBER 2015-NOVEMBER 2016, NOVEMBER 2016-NOVEMBER 2017

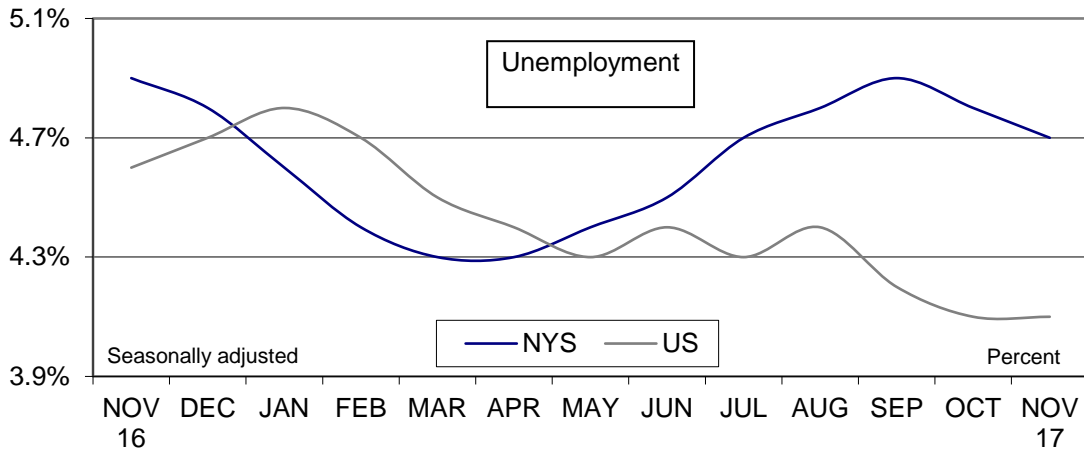


■ NOV 2016-NOV 2017    ■ NOV 2015-NOV 2016    □ NOV 2014-NOV 2015

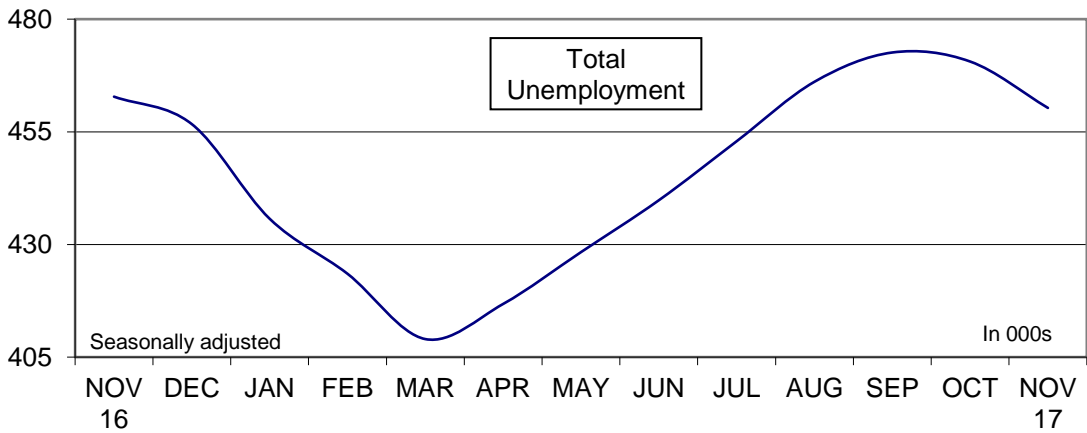
## CHART 4: LABOR FORCE STATISTICS IN NOVEMBER 2017

In November...

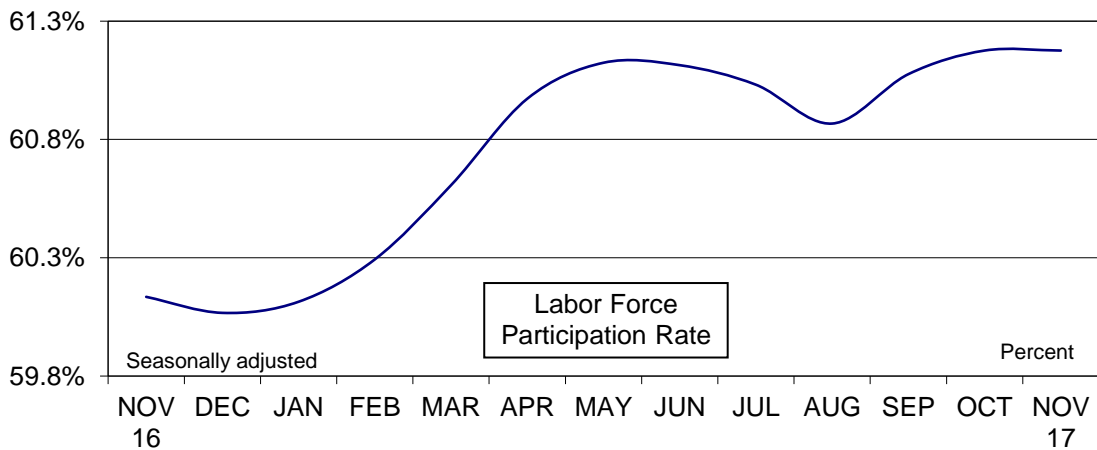
...NYS unemployment rate decreased



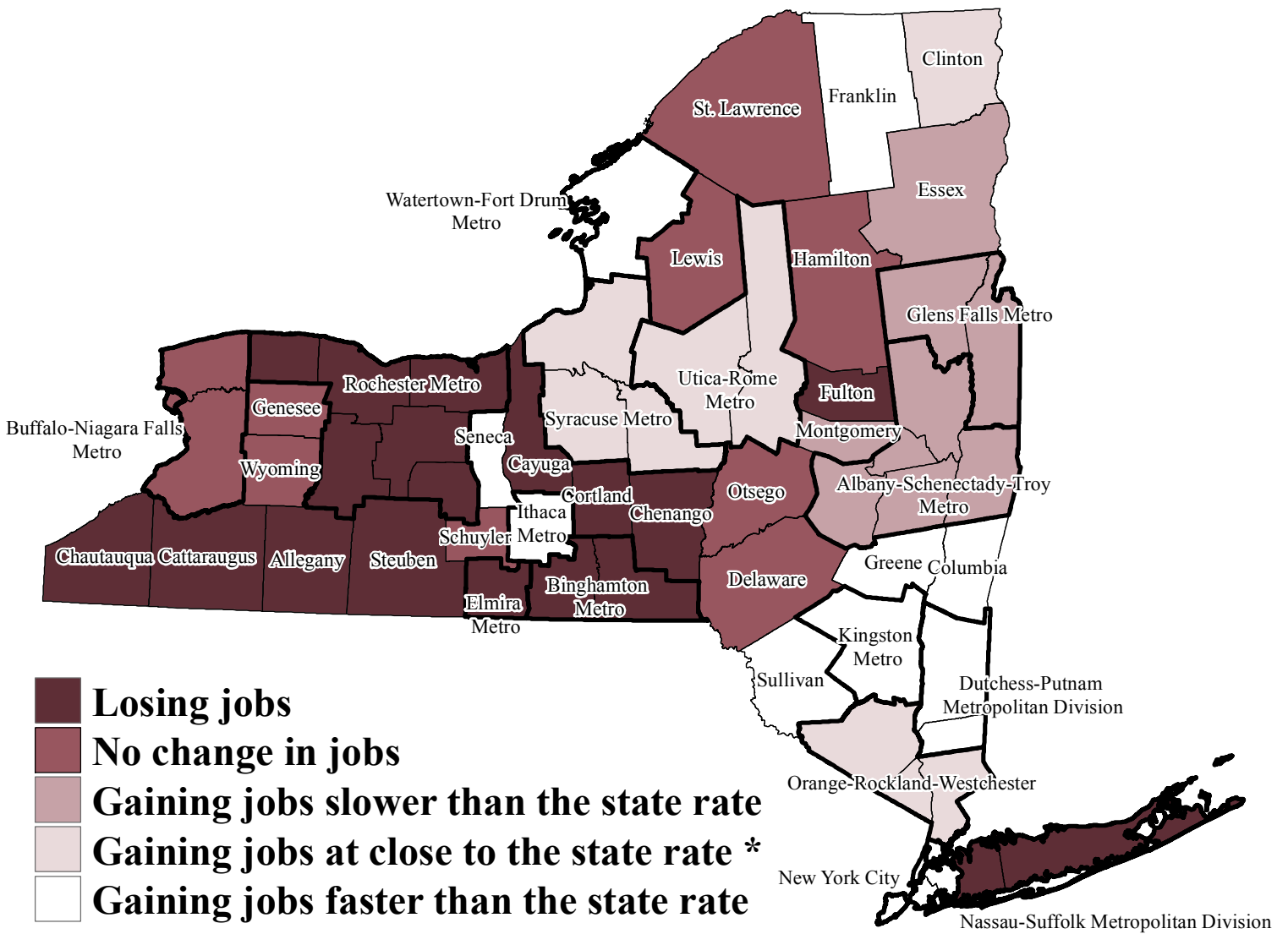
...NYS total unemployment decreased



...NYS labor force participation rate remained the same



# Percent Change in Private Sector Jobs by Area, New York State, November 2016 - November 2017



\* Represents job gain of between 1.2% and 1.6% from November 2016 to November 2017.