

# Bonneville County Fair 2019

## Built from the ground up



**Bonneville County Fair Grounds**  
**7475 So 15th E.**  
**August 5-8**  
**Horse Show August 2-3rd**

# Bonneville County 4-H Fair Exhibitors Handbook

University of Idaho Bonneville County Extension Office  
7475 So.15<sup>th</sup> E. Idaho Falls, ID 83404  
(208) 529-1390

4-H Extension Educator- *Alaena Ruth*  
4-H Secretary –*Kim Weiland*

The Bonneville County Extension Office is open Monday through Friday from 8:00 AM until 5:00 PM The office is closed holidays and weekends. Please keep this in mind and allow plenty of time for your business to be processed.

YOU CAN ENROLL IN BONNEVILLE COUNTY 4-H BY:

- GOING TO 4-H ONLINE
- CREATE A PROFILE FOR YOU AND YOUR FAMILY
- PAY YOUR FEES IN THE OFFICE

YOU ARE NOT CONSIDERED ENROLLED, OR COVERED BY 4-H INSURANCE, UNTIL YOU HAVE REGISTERED AT 4-H ONLINE AND FEES ARE PAID.

TO REGISTER FOR 4-H FAIR CLASSES PLEASE GO TO THE FAIR ENTRY WEBSITE,

**FAIR ENTRY WILL BE OPEN STARTING JULY 15. PLEASE REGISTER EARLY!!**

**4-H Online:** <https://id.4honline.com>

**Fair Entry Website:** <http://bonneville.fairentry.com>

**4-H website:** <http://www.uidaho.edu/extension/4h>

**Bonneville County 4-H Blog site:** <http://bonnevillecounty4-h.blogspot.com>

**Facebook:** [www.facebook.com/UIExtensionBonneville](http://www.facebook.com/UIExtensionBonneville)

## TABLES OF CONTENTS

Important Dates.....	1
Fair week Dates.....	2
Dates to watch for .....	3
General Rules.....	3
EISF Rules.....	5
Record Books.....	5
Memory Books.....	6
Awards/Contests.....	6
Style Review.....	8
Livestock Round Robin.....	9
Livestock Judging.....	10
Demonstrations.....	14
FCS Projects.....	15
Clothing and Textiles.....	15
Environmental Education.....	16
Food Projects.....	16
Food Preservation.....	16
Table Settings.....	17
Misc. Projects.....	17
Livestock Ethics.....	18
Livestock Rules.....	18
Breeding specific. ....	19
Market specific. ....	20
Livestock show.....	21
Dress-code.....	21
Livestock Awards.....	21
Livestock Market Sale.....	22
Large Animal	
Beef.....	23
Dairy Cattle.....	24
Dairy Goat.....	25
Market Goat.....	26
Sheep.....	27
Fiber Goat and Sheep.....	28
Swine.....	28
Small Animal	
Dog.....	29
Poultry.....	30
Rabbit.....	31
Horse Rules.....	32
Horse Ethics.....	32
Horse show.....	32
Fair Schedule.....	
Fair Board Open Class.....	

## IMPORTANT PRE-FAIR DATES

BONNEVILLE COUNTY FAIR

AUGUST 5, THROUGH AUGUST 9, 2019

<b>March 2</b>	<b>**Beef Weigh-in 8:00-10:00 AM</b>
<b>April 15</b>	<b>Horse Enrollment Deadline</b>
<b>May 4</b>	<b>**Swine Weigh-in 8:00-10:00 AM</b>
<b>May 6</b>	<b>Animal leases need to be turned into the office by this date</b>
<b>June 1</b>	<b>Late Enrollment deadline for Market Livestock, 5:00 PM (Requires a \$25 late fee in addition to regular enrollment fee)</b>
<b>June 1</b>	<b>**Sheep, Goat Weigh-in 8:00-10:00 AM</b>
<b>June 1</b>	<b>EISF weigh-in 10:00-11:00 AM</b>
<b>June 24</b>	<b>Demonstration Entry forms accepted in the Extension office</b>
<b>July 1</b>	<b>FCS enrollment deadline</b>
<b>July 15</b>	<b>Entry form deadline for demonstration contest</b>
<b>July 15</b>	<b><u>Fair Entry open for enrollment</u> <u><a href="http://bonneville.fairentry.com">http://bonneville.fairentry.com</a></u></b>
<b>July 16</b>	<b>Family Swim and Picnic 5:30 PM Swim 6:55 PM</b>
<b>July 18</b>	<b>Demonstration Contest 8:00 AM to 6:00 PM</b>
<b>July 25</b>	<b>Demonstration Contest (Make-up) 8:00 AM to 6:00 PM</b>
<b>July 26</b>	<b>All Animal and FCS Record Books due in office by 5:00 PM ***<i>remember to include EISF animals in record books.</i></b>
<b>July 29</b>	<b>Show Entry Forms Deadline</b>
<b>July 29</b>	<b><u>Fair Entry Closed for enrollment</u> <u>**Late Enrollment deadline for Market Livestock, 5:00 PM (Requires a \$25 late fee in addition to regular enrollment fee)</u></b>

The Bonneville County Extension Office will have extra forms for Demonstration Contest, Style Review, and Dog Show.

## FAIR WEEK DATES

<b>August 2</b>	Horse, Driving, and Working Ranch Horse Bank of Commerce Horse Arena	<b>August 7</b>	Market Goat Show Melaleuca 4-H Events Center
<b>August 3</b>	Horse Showmanship, Western, English, Dressage, Reining, & Trail Bank of Commerce Horse Arena	<b>August 7</b>	Raffle/Family BBQ- High School Seniors 4-H Awards
<b>August 3</b>	All FCS projects check-in, judging, and interview judging	<b>August 7</b>	Parking lot dance Fairgrounds
<b>August 3</b>	Table setting contest Education Complex Exhibit Hall	<b>August 8</b>	Cupcake wars Education Complex Kitchen
<b>August 3</b>	Fair Setup	<b>August 8</b>	Round Robin contests Melaleuca 4-H Events Center
<b>August 5</b>	Livestock final weigh-in	<b>August 8</b>	Pee Wee Parade Melaleuca 4-H Events Center
<b>August 5</b>	Dog Show Melaleuca 4-H Events Center	<b>August 8</b>	Rabbit Agility Melaleuca 4-H Events Center
<b>August 5</b>	Rabbit Show Location TBD	<b>August 8</b>	Style Review Education Complex Exhibit Hall
<b>August 5</b>	Livestock Judging Melaleuca 4-H Events Center	<b>August 8</b>	Buyers BBQ Fairgrounds
<b>August 5</b>	Dairy Cattle Show Melaleuca 4-H Events Center	<b>August 8</b>	4-H Market Livestock Sale Melaleuca 4-H Events Center
<b>August 5</b>	Dairy Goat Show Melaleuca 4-H Events Center	<b>August 9</b>	Barn clean up, pick up FCS projects not going to EISF
<b>August 6</b>	Swine show Melaleuca 4-H Events Center	<b>August 9</b>	All projects going to EISF will be left in the Education Complex Exhibit Hall for storage and transport to EISF
<b>August 6</b>	Poultry Show Location TBD		
<b>August 6</b>	Beef Show Melaleuca 4-H Events Center		
<b>August 7</b>	Sheep Show Melaleuca 4-H Events Center		
<b>August 7</b>	Fiber Goat Show Melaleuca 4-H Events Center		



## DATES TO WATCH FOR

<b>Feb 18</b>	Leaders Training 6:00-8:00 PM
<b>Feb 25</b>	Nutrition and Weights Class 6:00-8:00 PM
<b>April 26-28</b>	Eastern District Ambassador Summit
<b>May 2</b>	Record Book work night 6:00-8:00 PM
<b>May 6</b>	Ethics Training 6:30 PM
<b>May 17-19</b>	4-H Alpine Camp
<b>May 31&amp;June 1</b>	District Shooting Sports
<b>June 6&amp;7</b>	Camp Counselor Training 9:30 AM-2:30 PM
<b>June 3,5, 24, 26</b>	Food Preservation workshops
<b>June 13</b>	FCS Judges Training 5:00-6:00 PM
<b>June 10-14</b>	Blitz Week
<b>June 17-19</b>	4-H Alpine Camp
<b>June 24-27</b>	State Teen Association Convention (STAC)
<b>July 8-13</b>	Alpine Horse Camp
<b>July 20</b>	Mini Goat Show at Bonneville County Fairgrounds. MDGA Sanctioned show. Contact Amy McClellan
<b>July 13</b>	Goat & Lamb Jackpot (Goat Weigh-in at 9:00 AM., Show at 10:30 PM. Lamb weigh-in at 11:00 AM, show to begin immediately following goat show)
<b>September 23</b>	Recognition Night 6:30-8:30 PM

## 2019 BONNEVILLE COUNTY 4-H FAIR

### GENERAL RULES

- Exhibitors are responsible for knowledge of and adherence to all rules.
- The Bonneville County 4-H Fair is open to members of Bonneville County 4-H and FFA who are enrolled for the current year.  
**Bonneville County 4-H Fair abides by University of Idaho State 4-H Policies and Procedures (2018- 2020).**
- 4-H age is the age of the individual on January 1 of the current 4-H year (which runs from October 1, 2018 to September 30, 2019.) Youth must be at least 8 years of age to participate in the traditional 4-H program. Marriage and/or parenthood shall not disqualify individuals from 4-H membership and participation, provided other requirements are met. In recognition of the educational and developmental needs of youth members will be grouped for program management purposes (based on age as of January 1) as follows:
 

Junior	8 through 10 years old
Intermediate	11 through 13 years old
Senior	14 through 18* years old

 (\*Youth who turn 19 before January 1 of the 4-H year are no longer eligible to participate, unless they have special needs and are still enrolled in high school. *From: Idaho 4-H Policies and Procedures for 2018-2020.*)
- Cloverbuds is a program for youth ages 5 to 7 years old. They will receive a participation ribbon and are not judged or eligible for premium monies. Cloverbud members may be involved in FCS and small animal projects. These are defined as rabbits, cavies, small dogs that weigh less than the member, chickens, and mini-goats. Fair exhibits by Cloverbuds are optional but must be non-competitive. Cloverbuds may not participate in large animal, ATV or shooting sports projects.
- Current FFA members who are in good standing with their chapter are eligible the summer after they have completed the 9<sup>th</sup> grade.

6. 4-H and FFA participants, parents, volunteers, advisors and extension educators must follow the State 4-H/FFA MOU. 4-H and FFA participants are expected to:
  - Conduct themselves in a courteous respectful manner
  - Exhibit good sportsmanship
  - Provide positive role models for younger youth
  - Respect, adhere to, and enforce the Idaho 4-H and FFA rules, policies, and guidelines.
  - **Exhibitors, Parents, and Volunteers who fail to abide by the Code of Conduct for 4-H will be subject to consequences outlined in the Code of conduct.**
7. Members who participate in both 4-H and FFA activities are eligible to participate in judging or bowl activities of both organizations. A member would not be permitted to judge as a team member or individual in both 4-H and FFA at the same contest.
8. Accident insurance has been purchased for all Certified Volunteers and enrolled 4-H Members who have paid the State and County fees in the 4-H office.
9. Participants in the Bonneville County 4-H Fair are accepting all risk (personal and real property) and hereby waive any claim for such against the University of Idaho Extension, and Bonneville County and its personnel. Participants further agree to hold harmless and to indemnify the University of Idaho Extension, Bonneville County, City of Idaho Falls and their personnel from any liability or legal proceedings.
10. The University of Idaho is an equal opportunity/affirmative action employer and educational organization. We offer our programs to persons regardless of race, color, national origin, gender, religion, age, sexual orientation, or disability.
11. In compliance with the Americans with Disabilities Act of 1990, those requesting reasonable accommodations need to contact the Bonneville County Extension Office at Phone 529-1390 or TDD 529-1103, by Friday July 12, 2019.
12. The information presented in this publication is supplied with the understanding that no discrimination is intended, and no endorsement of products or services is implied by the University of Idaho Extension.
13. All deadlines are by 5:00 PM on the due date.  
**DEADLINES WILL BE STRICTLY ADHERED TO.**
14. A record book including a story and applicable inserts must be submitted for each livestock, horse, and FCS project. Remember to include EISF projects as well.
15. Projects must be exhibited as directed in the project manual, project requirement list, and this fair book. All projects and optional accompanying materials must be made or produced by the exhibitor with minimal adult assistance, unless otherwise specified in the class description. Items must represent work completed by 4-H members during the current 4-H season (October 1, 2018 thru September 30, 2019.)
16. Incomplete projects and projects checked in late will not be accepted. It is the responsibility of the leaders and the 4-H members to make sure all projects are complete. Check the project book, project requirement list, and this fair book for guidelines and requirements. Contact the Extension Office at 529-1390 if you have questions.
17. Show Entry Forms are online at <http://bonneville.fairentry.com> Completed forms may be entered online beginning Monday, July 15th. All live animal show entry forms are due on Friday, July 29, by 5:00 PM Style Revue entry forms complete with description, are due Wednesday, August 7, by 5:00 PM.
18. All 4-H projects require that a demonstration be given in the club and must be recorded in the project record book. Demonstrations, Presentations and Illustrated Talks will be referred to as demonstrations.
19. Fair entries and exhibits must match items described in corresponding record books.
20. Regulation size for Posters is at least 8½ x 11 inches. Displays must be free standing, and labels are to be securely attached.

21. All exhibit items must have securely attached labels, which show the member's name, age, project, and name of county. Labels will be provided either ahead of time or at fair check in. If a project has more than one part, each part must be labeled.
22. No 4-H member except judge assistants will be allowed into the Exhibit Building on Saturday, August 3 after 12:00 PM.
23. Premiums will be available in October. Premium monies will be forfeited if premium envelope is not picked up by December 31, 2019.
24. Anyone removing their 4-H projects before the designated checkout day and time will forfeit monies unless approved by superintendents.
25. The Bonneville County 4-H Grievance Committee will rule on any issue that is submitted. Questions regarding conduct of exhibitors may be referred immediately to the Bonneville County 4-H Grievance Committee for a final decision. Grievances must be submitted by end of next business day and must originate in the office with a \$25.00 fee. All rulings will be final. The fee may be returned at the discretion of the Grievance Committee; fees collected will be used for scholarships.

## **EASTERN IDAHO STATE FAIR (EISF) RULES**

1. Bonneville County attempts to comply with EISF rules. However, it is the responsibility of the exhibitor to read and comply with the requirements in the EISF Fair Handbook.
  2. All 4-H members receiving blue awards at the Bonneville County 4-H Fair are eligible to enter exhibits at the EISF with the *following exceptions*: Secretary Books, Memory Books, Demonstration Contests, Special Interest, FCS record books, Horse and Livestock record books.
  3. FFA non-animal projects will not go to the EISF. The projects will be released between 9:00 AM and 1:00 PM on Friday, August 9.
  4. 4-H members taking any market or breeding animal to EISF must submit appropriate record books on those projects to the county to be judged. Record books are due at the Bonneville County Extension Office by Friday, July 26.
- Record books will be held at the Bonneville County office until the end of EISF (to complete the record books, participants will estimate the current market price).
5. All EISF market animals must be weighed-in at appropriate initial weigh-in and tagged with a county fair tag, in order to be tagged with a state fair tag on June 1.
  6. Each exhibitor may tag no more than 2 animals in each species for EISF.
  7. The ONLY time animals will be tagged with an EISF tamper proof tag and tissue sampled will be on June 1, 2019. State Fair animals will be tagged following the sheep and goat weigh-in unless prior arrangements have been made.
  8. Any market animal tagged for EISF that is brought to the Bonneville County Fair final weigh-in will have the EISF tag permanently removed, thus making the animal exempt from EISF participation.

## **RECORD BOOKS**

1. A record book including a story and applicable inserts must be submitted for each livestock, horse, and FCS project. Remember to include EISF projects as well. Livestock and Horse Record books may be accessed online at: <http://www.uidaho.edu/extension/4h>. FCS, Horse, and Livestock record books may be picked up in the Extension Office.
2. All record books or record sheets, except day camps, must be signed by the parent/guardian, volunteer, and 4-H member. These signatures signify the 4-H member has completed all the project requirements. If no line is provided for a given signature, the signature will be placed at the bottom of the project cover or the front page.
3. All record books should be in a 3-ring binder. Please use separate binders for FCS and Livestock record book. See "Rules" within each division for specifics on record books. Any 4-H member wishing to compile a "Memory Book" in the Education Complex Exhibit Hall should submit it in a separate binder.
4. Breeding animals and market animals of the same species can use the same record book. Example if you have a market steer and a breeding heifer you will put both in one record book for beef.

5. Youth participating in a combination of livestock, horse, or FCS projects are encouraged to write a total experience story in their record book. A total experience story will cover each livestock, horse, and FCS project completed, and any other projects completed or events (KYG, Teen Conference, Livestock Judging trainings, 4-H Camp/Horse Camp etc.) attended. A story is more like a report, it should tell us what the youth has learned, what was fun, easy, difficult, and obstacles that were overcome, etc. stories should follow these guides.

- Juniors 1-4 pages,
- Intermediates 1½ -6 pages,
- Seniors 2-8 pages.

The more projects and activities= the longer the story/report. Remember to include all activities and projects completed. Stories must be complete, judges will notice incompleteness.

6. 4-H members participating in 4-H market animal projects must have proof of ownership (brand inspection for beef, bill of sale on goats, sheep, and swine).
7. All 4-H members participating in market projects including lamb, goat, and chicken must have documentation as to the origin of animals marketed within the U.S. or internationally. This can be provided by using a Country of Origin Labeling (COOL) Document.
8. Anyone participating in breeding, pet or horse projects must include, in their record book(s) the following:

Each breeding animal or pet project

- Permanent Individual Animal Identification Record

Each Horse project

- Permanent Horse Identification and Health Record
- Skills Checklist

9. All record book entries (except day camps) will be required to include the 4-H Involvement Report, #91910. This publication can be found in the Extension Office or on the University of Idaho 4-H website:

<http://www.uidaho.edu/extension/4h> Any record book without the Involvement Report will be ineligible for the "Outstanding Record Book Award".

10. All 4-H projects require that a demonstration be given in the club and must be recorded in the project record book.
11. All record books, including EISF animals, must be completed and submitted to the Bonneville County Extension Office by Friday, July 26 before 5:00 PM. Any project without the completed record book is ineligible to show at the Bonneville County Fair/Horse Show. (Participants will use the current market price or estimate show price to complete record books. Indicate which price is used)
12. FFA members are required to turn their SAE record books in for review to the Bonneville County Extension Office by Friday, July 26 before 5:00 PM Any project without the completed record book is ineligible to show at the Bonneville County Fair/Horse Show.

## **MEMORY & SECRETARY BOOKS**

Memory Books and Secretary Books will be entered at the Exhibit Building on Saturday, August 3 between 9:00 AM and 11:30 AM. A Memory Book is a notebook that contains and organizes information, projects, photos, awards, etc., which a 4-H'er has collected throughout his or her years in 4-H. Secretary Books will be judged on neatness, attendance roster, completeness, dates of demonstrations, and the six required club meetings. Secretary and Memory Books will be awarded ribbon.

## **AWARDS AND CONTESTS**

### **VIRGINIA RUSSELL AWARD**

Virginia Russell was a 4-H leader in Bonneville County for nearly 50 years. She began leading a 4-H Club in 1933. For 50 years she worked with hundreds of youth, principally in the New Sweden area where she lived, teaching and leading youth in an estimated 50 different 4-H projects. The purpose of this annual award is to encourage further training and advancement in 4-H leadership quality and to recognize and honor a Bonneville County adult leader who through their devotion and dedicated service had a significant impact in the 4-H program, the 4-H membership, and the community. A winner is chosen from nominations made by 4-H members, other 4-H leaders, parents, and any other interested persons. Nominations forms are available during the fair at the exhibit hall.

## LIFETIME ACHIEVEMENT AWARD

All 4-H members who are of Senior age division in Bonneville County are eligible for this award when they have accumulated 1,000 points. The 4-H member must complete an application and turn it into the Extension office; it will have had to be approved by their 4-H Club Leader and a parent or guardian. The applicant will arrange with the 4-H Educator to have an interview. This award can be received only once. Points are given for participation in contests, activities, citizenship, leadership and projects. An application is available through the Bonneville County Extension Office and is due July 15.

## IDAHO MAKE IT WITH WOOL

The Promotion Division of the Idaho Wool Growers offers awards to 4-H members who make garments from wool fabric or yarn at the basic and advanced levels.

Contestants receive judging at the county level on construction and fit (style revue or interview) and at the state level on

construction and their Wool Contest Portfolio. 4-H members may participate in the Idaho "Make It with Wool Contest", with their 4-H Wool Sewing Projects. The contest is separate from 4-H. Fair and Blue ribbons are not a MIWW contest requirements. Participants will follow the Idaho Make it with Wool contest requirements and awards system. For information on how to participate see:

<https://idahowoolgrowers.org/WA-Themes>

## FCS BEST OF SHOW

Divisions will include food, sewing, and miscellaneous. Only 1 or 2 awards will be given in each division. Awards will be presented during recognition night.

To qualify objects will be judged on craftsmanship quality, appearance, taste, presentation, and originality.

<b>Foods</b>	<b>Sewing/ Misc.</b>
Appearance 15 pts	Craftsmanship 20 pts
Taste 10 pts	Appearance 15 pts
Presentation 5 pts	Originality 10 pts
	Presentation 5 pts

## GOLD SEAL FCS AWARD

The Gold Seal FCS is in recognition of superior achievement in FCS project work and is not a contest.

Points can be accumulated within any or all the project areas (Foods, Clothing, Environmental and Outdoor Education, Misc.). The Gold Seal FCS certificate will be awarded to all 4-H FCS members earning the requisite 45 points per project area through the project work. Additionally, County Demonstration Contest participation is mandatory for each project area to receive the Gold Seal Award for specified area.

FCS Gold Seal points are awarded as follows:

<b>Record Book</b>	<b>Project, Demonstration, Memory Book, Style Review</b>
Blue 20 pts	Blue 15 pts
Red 10 pts	Red 10 pts
White 0 pts	White 5 pts

Honor Roll	Outstanding	Interview Judging
5 pts	5 pts	10 pts

## FCS CENTENNIAL AWARD

To qualify for the FCS Centennial award, a 4-H member must complete at least one project in three of the four divisions: Foods, Clothing, Environmental and Outdoor Education, Miscellaneous. At least one project-specific demonstration must be done at the county level. One award will be presented to the highest scorer in each of the three age divisions if requirements are met. Each project and demonstration receive points as follows:

A minimum of 50 points must be earned to be considered for the FCS Centennial Award.

Blue Ribbon	10 pts
Red Ribbon	5 pts
White Ribbon	0 pts.
Best of Show	10 pts
Outstanding project	10 pts
Honor Roll	5 pts
Memory Book	10 pts
Style Revue	10 pts
Interview Judging	5 pts



## CUPCAKE WARS

*August 8, 2019 9:00 am-12:00 pm*

A contest at the Bonneville County Fair in which 4-H members will compete in teams to create the prize-winning cupcake in 1 hour and 30 minutes! There will be 12 teams of 2. Each team will bring all the materials needed to bake and design 6 cupcakes from scratch (3 for the judges and 3 to display) according to the designated theme. Cupcakes will be baked from scratch, no box mixes allowed. Once the allotted time has elapsed each team will present their cupcakes to our panel of judges. Participants will be judged on communication, presentation, display, teamwork, taste, creativity, and kitchen safety/cleanliness. prizes will be awarded for First Place, Second Place, and Judges Choice. Applications will be accepted at the Extension Office until the first 12 slots are filled or until Tuesday August 6, 2019 whichever comes first. *Registration forms are available in the Extension office.*

## BONNEVILLE COUNTY STYLE REVUE

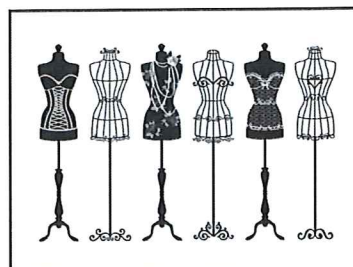
Thursday, August 8, 2019 at 2:00 PM  
in the Exhibit Hall

*Style Revue Superintendent –Ann Broughton  
Participations forms can be filled out in the  
Bonneville County Extension Office*

1. **GENERAL RULES APPLY.**
2. 4-H members who complete a clothing (sewn or purchased), sewing, knitting, or crocheting project may participate in the Style Revue.
3. Any Bonneville County 4-H member may choose to enter the Purchased category and

model in the county fair Style Revue. You do not have to be registered in a clothing project. In the Purchased category, the 4-H member may model any purchased outfit or something from their closet.

4. 4-H members may model one item in each project area (i.e. sewing, crochet, knit) and one outfit in the Purchased category. Items that can be modeled include clothing, scarves, backpacks. Items that can be draped or worn on the body may be modeled. If you have any questions whether the item fits the requirements, please contact the Style Revue Superintendent
5. Other items may be modeled at the Superintendent's discretion (such as pillowcases) but they will not be eligible to go the EISF, there is no Purchased category at the EISF.
6. 4-H members may model handmade accessories from above mentioned projects.
7. Completed Style Revue Description and Entry Form will be accepted until the day before style review by 5:00 PM These forms are essential and **MUST** be clearly legible.
8. Procedures for the Style Revue:
  - Check-in one hour before the start of the revue with the helper in charge, get your project and number at the exhibit hall
  - Change into modeling outfit
  - Check-in with the helper in charge of line-up and get in line
9. An Outstanding Model may be chosen from each age division- one junior, one intermediate and one senior.
10. A Top County Model may be chosen from all eligible models, purchased division is not eligible.
11. Receiving a blue ribbon in the county Style Revue is required to model at the EISF Style Revue.
12. EISF Style Revue items are required to be wearable.



## TABLE SETTING CONTEST

The Table Setting Contest is open to all 4-H age divisions. Participants need not be enrolled in a specific project. It will be held on the Saturday, August 3, 2019 before fair, during FCS project Check-in in the Exhibit Hall at the Bonneville County Fairgrounds. Participants will have 30 minutes to set up their table and interview with the judge. Participants will be judged within their age division. Tables settings will remain up for the duration of the fair. Those receiving blue ribbons may display at EISF. For specifics on this contest see FCS Projects. *Registration forms are available in the Extension office.*

### ROCKNAK'S HARDWARE PLUS

2250 W Broadway  
(208) 524-4405

### TOP FOOD PRESERVATION AWARD

To promote the art of home food preservation and to honor those youth that excel at food preservation methods, Rocknak's Hardware is offering the

*"Rocknak's Hardware Plus  
Top food preservation award"*

Participants who enter and earn a blue ribbon placing in at least two (2) of the three (3) preservation methods (*dehydration, pressure canning, or water bath canning*) will be eligible to earn this award.

Judges will select the best combined qualifying entries submitted by youth in each of the qualifying preservation methods. One grand prize canning package will be awarded as the "Rocknak's Hardware Plus Top Food Preservation Award".



## GOLD SEAL STOCKMAN AWARD

The Gold Seal Stockman is in recognition of superior achievement in animal project work and is not a contest.

Market and breeding projects are eligible in the beef, dairy cattle, dairy goats, market goats, sheep, and swine divisions.

Points can be accumulated within any species. The Gold Seal Stockman certificate will be awarded to all 4-H livestock members earning the requisite 45 points through project work in a species. County Demonstration Contest participation is mandatory for Gold Seal Award.

Gold Seal Stockman points in each species are awarded as follows:

Record Book		Fitting & Showing, Quality, Demonstrations	
Blue	20 pts	Blue	10 pts
Red	10 pts	Red	5 pts
White	0 pts	White	0 pts

4-H members meeting Gold Seal qualifications in all six species, over any length of time, will earn further recognition as a Gold Seal Agriculturalist, and will receive an engraved plaque.

### ROUND ROBIN

Thursday, August 8

Large Animal Round Robin- 8:00 AM

Small Animal Round Robin- 10:00 AM

Round Robin Superintendents-

*Jan Cervantes and Angela Freeman (Large animal)*

1. Showmanship Grand and Reserve Champions in beef, dairy cattle, dairy goat, market goat, sheep, swine, and horse are eligible to participate.
2. Showmanship Grand and Reserve Champions in poultry, rabbit and dog are able to participate in the small animal round robin.
3. If members qualify in two or more species, they must declare which species they intend to participate by 5:00 pm the last day of the livestock shows.
4. If Grand or Reserve Champion showman for any reason chooses not to participate, next in placing for that species will then be eligible.

5. Showmen must show the same animal that was used in the showmanship class in which they won Grand or Reserve Champion Showman.
6. Each species will have appointed stations. The animals will stay at those stations and the showmen will rotate. Showmen will have approximately five minutes at each station with each species.
7. Each station will have a judge. Each judge will use a scorecard to judge each showman. Points will be given to each participant for fitting their own animal.

## **LIVESTOCK JUDGING CONTEST**

Monday, August 5, 2019 at 2:00 PM in Show Ring  
*Superintendent – Rhonda Smith*

### **RULES**

1. GENERAL RULES APPLY.
2. Classes will be judged in designated species, and include beef, sheep, meat goats and swine.
3. At least one set of oral reasons will be required.
4. Contestants will judge as individuals.
5. Participants will be selected to form up to 3 teams and represent Bonneville County at the EISF Livestock Judging Contest. EISF is now considered the state-qualifying contest for participation in the national contest.
6. The 3 teams going to EISF will be a senior division team (14-18), junior division team (8-13), C-team (any ages.)
7. Team qualification includes:
  - Score at county contest
  - Participation in practices and competitions as recorded by the extension office.
  - Ties will be determined by an additional class and then determined by oral reasons
8. All selected team participants must attend all team meetings prior to EISF and attend the state-qualifying contest.
9. FFA will hold a separate contest simultaneously with the 4-H livestock judging contest.
10. FFA participants will not qualify for the State Contest at EISF.
11. Members who participate in both 4-H and FFA activities are eligible to participate in judging or bowl activities of both organizations. A member would not be permitted to judge as a

team member or individual in both 4-H and FFA at the same contest.

## **IDAHO CATTLE ASSOCIATION SUPERIOR BEEF BELT BUCKLE & BONNEVILLE COUNTY CATTLE ASSOCIATION BELT AWARD**

The Idaho Cattle Association and Bonneville County Cattle Association award the Superior Beef Award. This Award is presented to a 4-H member with an Outstanding Beef project. It is based on the best combination of performance, sportsmanship, and citizenship. A summary of ribbons earned by each exhibitor will be compiled following the fair. The award is presented at the Bonneville County Cattle Association Annual Banquet. This award is limited to one buckle per exhibitor 4-H career.

The following will be awarded points: Quality Market and Breeding classes, Showmanship, Demonstration and Record Book.

Grand Champion ribbons	12 points
Reserve Grand Champion ribbons	10 points
Blue ribbons	8 points
Red ribbons	5 points
White ribbons	0 points

## **BLACK ANGUS AWARDS**

### **\$100.00 IDAHO'S TOP BLACK ANGUS ULTRASOUND CARCASS**

The Idaho Angus Association sponsors two \$100.00 cash awards and plaques to the highest placing Black Angus Carcass and Ultrasound Black Angus Carcass in the state. Each county extension office or county fair award organizer must send the carcass data from their county to the Award Chair for tabulation. In order to qualify animals must be 51% black in color, have no Brahma or dairy influence, and have been exhibited at an Idaho fair. Criteria for judging will be based from the Certified Angus Beef formula.

## HALTER FOR THE OUTSTANDING BLACK ANGUS MARKET PROJECT

There will be an award to be given to the highest placing Black Angus Market Project in the live show. The outstanding Black Angus market project is open to either a 4-H or FFA member (only one award). The exhibitor must own the animal and the divisions of both quality and fitting and showing are to be considered. If there is not a 100% Black Angus project entered then a crossbred animal is eligible providing it is **at least 50% Black Angus** (verified Black Angus sire or dam). An exhibitor may receive the outstanding Black Angus market project award more than once but not two years in a row.

## DESKTOP STAR AWARD FOR OUTSTANDING BLACK ANGUS BREEDING PROJECT.

The Idaho Angus Association sponsors an award to be given to the highest placing **BLACK ANGUS** breeding project. Females and bulls are eligible; **steers are not eligible**. This award is open to either a 4-H or FFA member (only one award). The exhibitor must own the animal and the divisions of both quality and fitting and showing are to be considered. If there is not a 100% Black Angus project entered, then a crossbred animal is eligible providing it is at least **50% Black Angus** (verified Black Angus sire or dam). An exhibitor may receive the outstanding Black Angus breeding project award more than once but not two years in a row.

Points will be calculated as follows:

### Conformation & Showmanship Placing:

Grand Champion	40 points
Reserve Grand Champion	30 points
1 <sup>st</sup> place (blue ribbon)	20 points
2 <sup>nd</sup> place (red ribbon)	15 points
3 <sup>rd</sup> place (white ribbon)	10 points
Educational display promoting the Angus breed	25 points.

\*If steers and breeding animals are both exhibited, points may be combined to select a winner.

## ULTRASOUND CARCASS COMPETITION

### GENERAL RULES

1. Ultrasound will be performed at time of final weigh-in.
2. Ultrasound will be performed on all market animals weighed-in.
3. Fee will be collected with the submittal of the record book. Scholarships are available for ultrasound fees, please submit a scholarship form to the livestock committee by July 25, 2019.

4. Fees are as follows:

Market Beef:	\$4.00/animal
Market Swine:	\$4.00/animal
Market Lamb:	\$4.00/animal
*Market Goat:	\$4.00/animal

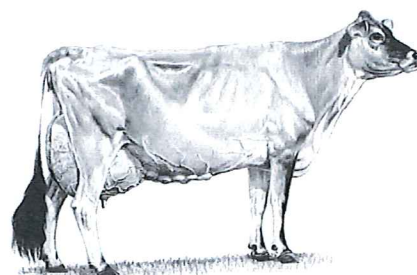
ONLY Market Goat ultrasound is optional due to the low weight requirement and small loin-eye size.

5. The top three places in each species will receive awards as follows:

1 <sup>st</sup> place:	\$75.00
2 <sup>nd</sup> place:	\$50.00
3 <sup>rd</sup> place:	\$25.00

## DAIRY CATTLE AWARD

To honor those 4-H youth that excel and to promote positive participation in the Dairy Cattle project in Bonneville County, the Bonneville County Farm Bureau will sponsor an award to Grand Champion and Reserve Grand Champion showmanship, and Grand Champion and Reserve Grand Champion Quality in the Dairy Cattle Show. Awards will be presented at the time of the show.



## BONNEVILLE COUNTY WOOLGROWERS 4-H \$25.00 CASH AWARD

The leaders of each Bonneville County 4-H Livestock Club are invited to nominate one or more first year (novice) members enrolled in a market lamb project during which he or she has overcome some adverse conditions/unusually difficult challenges in completing the project.

Nominations explaining the circumstances are to be e-mailed to Joe Kennedy within two weeks following the end of the fair ([kennedyjs46@yahoo.com](mailto:kennedyjs46@yahoo.com)). Awards will be presented at the 4-H Recognition Program.

## MARKET GOAT AWARD

To honor those 4-H youth that excel and to promote positive participation in the Market Goat project in Bonneville County, special awards from various donors may be given for the Grand champion and Reserve Grand Champion showman in the Market Goat project, as well as the top showman in each age division. Awards will be presented at the time of the show.

## DAIRY GOAT AWARD

To honor those 4-H youth that excel and to promote positive participation in the Dairy Goat project, special awards from various donors may be given in any of the Dairy Goat classes. Awards will be presented at the time of the show.



## GOLD SEAL HORSEMAN AWARD

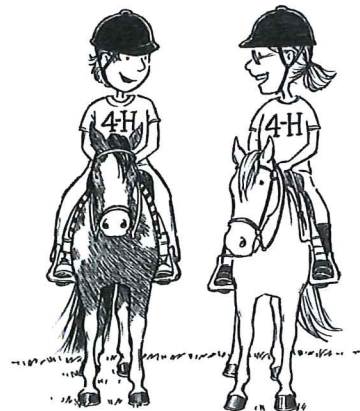
The Gold Seal Horseman is in recognition of superior achievement in horse project work and is not a contest. Horse projects are eligible in the Western, English, Driving, and Working Ranch divisions.

Points can accumulate within any division. The Gold Seal Horseman certificate will be awarded to any 4-H horse members who reach the required points per division. Driving, Working Ranch Horse, Western, and English have to earn the requisite 45 Points through project work in that particular division. County Demonstration Contest participation is mandatory for each division to receive a Gold Seal Award in that division. A demonstration in horse each year is required to qualify for a gold seal. A minimum of a red ribbon in the demonstration contest and on the record book is required to qualify for a gold seal award.

Gold Seal Horseman points in each division are awarded as follows:

<b>Record Books &amp; Demonstration</b>		<b>Showmanship, Riding, Driving, Cattle Work, &amp; Trail</b>	
Blue ribbons	10 pts	1 <sup>st</sup> place	6 pts
Red ribbons	5 pts	2 <sup>nd</sup> place	5 pts
		3 <sup>rd</sup> place	4 pts
		4 <sup>th</sup> place	3 pts
		5 <sup>th</sup> place	2 pts
		6 <sup>th</sup> place	1 pts

4-H members meeting Gold Seal qualifications in all four divisions, over any length of time, will earn further recognition as a **Gold Seal Equestrian**, and will receive an engraved plaque.



## HORSE HIGH POINT DIVISION AWARDS

Divisions will include Western, English, Driving, and Working Ranch Horse. The individuals with the highest points in each division will be presented an award at Recognition Night. To qualify, exhibitors must participate in A, B, and C.

### A. Demonstration

- Presented at the Bonneville County 4-H Fair Demonstration Contest
- Must be about horses; (no live animals)
- Judged on 100 point scale
- White ribbons will receive no points toward the high point award

### B. Horse Project Record Book

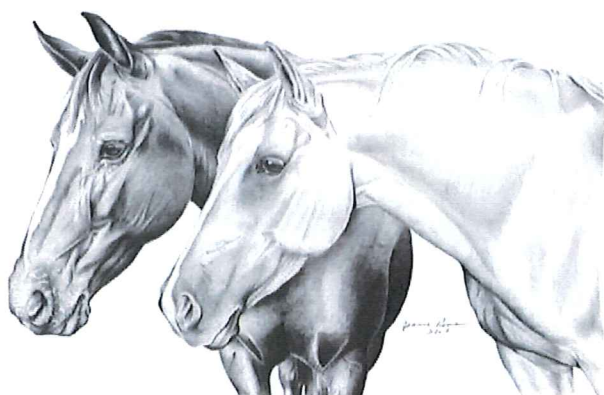
- Judged on 50-point scale
- Single highest score of all applicable record books will be used

### C. Project Participation

- Points accrue for each designated county and district activity specified by the Bonneville County 4-H Extension Educator. The 2019 4-H year began October 1, 2018 and points will accumulate through August 11, 2019.
- Total show points will also be calculated.

Points will be calculated as follows:

First place	6 points
Second place	5 points
Third place	4 points
Fourth place	3 points
Fifth place	2 points
Sixth place	1 point



## OVERALL HIGH POINT HORSE PROJECT AWARDS

One junior, one intermediate, and one senior will be presented an award at the culmination of the fair. To qualify, exhibitors must participate in A, B, and C.

### A. Demonstration

- Must be presented at the Bonneville County 4-H Fair Demonstration Contest
- Must be on the subject of horses (no live animals)
- Judged on 100-point scale
- White ribbons will receive no points toward the high point award

### B. Horse Project Record Book

- Judged on 50-point scale
- Single highest score of all applicable record books will be used

### C. Project Participation

- Points accrue for each designated county and district activity specified by the Bonneville County 4-H Extension Educator. The 2019 4-H year began October 1, 2018 and points will accumulate through August 10, 2019
- Total show points will also be calculated

Points will be calculated as follows:

First place	6 points
Second place	5 points
Third place	4 points
Fourth place	3 points
Fifth place	2 points
Sixth place	1 point



# DEMONSTRATIONS/ORAL PRESENTATIONS CONTEST

Thursday, July 18, 2019 at 8:00AM - 6:00PM  
in the Exhibit Hall

*Demonstration Superintendents-  
Sherry Glick and Jan Prudent*

Participations forms can be filled out in the  
Bonneville County Extension Office

## 1. GENERAL RULES APPLY.

## 2. Demonstrations can be any of the following:

### **Demonstration**

- A demonstration is doing and explaining.
- A demonstration is showing how.
- In a demonstration you make or do something. (There may be an end product i.e., a salad.)

### **Illustrated Talk**

- An illustrated talk is talking.
- An illustrated talk is telling how.
- In an illustrated talk you show pictures, charts, model, equipment, and other type of visual aids.

### **Speech**

- A speech is only the spoken words and gestures.
- A speech is presenting a topic.
- A speech does not include any visual aids. (Note cards only may be used)

### **Dramatic Reading**

- Words and actions used to present material to either entertain or educate.
- Presenters must use own published material or another author's published material.
- Costume, make-up, or props are required. Presentation may be memorized.



### **TV Commercial**

- A presentation to convince an audience to buy an idea or product.
- May use illustrations or objects if name brands are concealed.
- Includes introduction, body, and summary

3. Cloverbuds and special participants do not participate in the demonstration contests. Division and time limits are based on 4-H members age as of January 1, 2019:

Beginner	8 years or 1 <sup>st</sup> yr. in 4-H	3 to 6 min
Junior	9 to 10 years	5 to 8 min
Intermediate	11 to 13 years	7 to 10 min
Senior	14 to 18 years	9 to 12 min

4. All demonstrations given must be the original work of the member and can be used by the member for only one year.
5. Beginning Monday June 24, Demonstration Contest Entry Forms and a \$5.00 fee will be accepted in the Extension Office.
6. Demonstrations will be scheduled when entry forms are submitted. You will receive the \$5.00 back after you present your demonstration; you will forfeit the money if you fail to show up for your scheduled time.
7. Deadline for Demonstration Contest Entry Forms is Monday July 15, 5:00 PM.
8. All demonstrations must relate to a 4-H project topic and must not have been given before on a county level.
9. If a team demonstration is given, it will be judged in the age category of the oldest 4-H member participating on the team.
10. Videotaped demonstrations will not be allowed.
11. Rosettes will be presented to each participant at the demonstration contest.
12. The allocation of awards will be based upon the points awarded by the demonstration contest judges.
13. Each division winner will receive a cash award of \$20.
14. Demonstrations selected to be given at EISF must be the same that were given at the county contest.
15. There will be no live animal demonstrations.
16. Those eligible for EISF will be the top three scorers in each age division at the county contest as found in EISF rules and policies. If for any reason one of the top three opts not to attend EISF, the next eligible participant will be selected.

## FCS Projects

One premium will be given per project entered, premiums will be given based on a combined score of FCS record book and exhibit.

1. Interview Judging is optional for all FCS projects.
2. Interview judging will be on Saturday, August 3, one interview will be given for all entered projects. Interview judging will take place from 9:00 AM. to noon. The sign-up deadline is Wednesday, July 31, by 5:00 PM Times for interview judging will be given at the time of sign up. Interviews will be with a judge in 15 minute time slots. Parents will not be allowed in the room during judging, but they are welcome to stay in the lounge area. There will be 5 bonus points given for each project area and will be applied to the gold seal award.
3. All FCS record books (excluding day camps) should be included in a 1 inch 3 ring binder. FCS record books are due July 26, by 5:00 PM.
4. Included the record book in this order, separated by tabs, you should have:
  - Project list
  - 4-H total experience story (this includes each project submitted)
  - Individual project record books including
    - ✓ Goals
    - ✓ Demonstrations/Presentations
    - ✓ Expense/Income record
    - ✓ How did you do
    - ✓ Optional photos
  - Skills pages
  - Involvement report including Style Revue and service project.
5. Each project must have a record book submitted to be eligible to be judged.
6. All Food, Clothing, Environmental and Outdoor Education and Miscellaneous projects will be judged and receive a ribbon on Saturday, August 3. The Exhibit Building will be closed to project viewing on Saturday and Sunday. The exhibits will be available for viewing Monday at 9:00 AM through Thursday at 6:30 PM.
7. All FCS projects will be checked in at the Exhibit Building on Saturday, August 3 between 9:00 and 11:30 AM.

8. Exhibits not going to EISF: red and white ribbon projects, perishable projects, memory and secretary books, FCS, livestock and horse record books, and Cloverbud projects. Non-EISF projects will be released between 9:00 AM and 1:00 PM on Friday, August 9. *All projects going to EISF will be left in the Exhibit Building for storage and transport to EISF.* One portion of any perishable foods will be removed and frozen for display at EISF.
9. If you cannot be present to pick up projects not going to EISF, please arrange for your leader or a friend to pick up your projects. On September 1, all unclaimed projects will be discarded. Exhibits will be judged, and each exhibitor will receive a blue, red or white ribbon.

## CLOTHING/TEXTILE PROJECT-EXHIBIT RULES

*Clothing Superintendents–Joy Boyle  
Check-in Saturday, August 3, 2019 from  
9:00 to 11:30 AM*

1. **GENERAL RULES APPLY.**
2. Completed record book and summary or requirement sheet must accompany all clothing exhibits.
3. Labels are required for all clothing items exhibited and will be provided either ahead of time or at the fair check-in. Labels will be pinned to the bottom of the garment. Each label must give the same information as listed in the General Rules.
4. Accessories must be labeled and placed in a clear re-sealable plastic bag. Cardboard may be used to display accessories inside the bag.
5. Clothing projects will be checked in and judged for the fair on Saturday, August 5 between 9:00 AM and 11:30 AM at the Exhibit Building.



## **ENVIRONMENTAL, and OUTDOOR EDUCATION**

*Superintendent -Kelly Mullinaux  
Check-in Saturday, August 3, 2019 from  
9:00 to 11:30 AM*

### **1. GENERAL RULES APPLY.**

2. Each project must be labeled clearly with participants name and which project within the Environmental and Outdoor Education division the project is from. Projects in this division include:
  - I. Shooting Sports
  - II. Hunting
  - III. Entomology
  - IV. 4-H Camp
  - V. Junior Master Gardeners
  - VI. Wild Life
3. All Environmental and Outdoor Education projects will be checked in at the Exhibit Building on Saturday, August 3, between 9:00- 11:30 AM

## **FOOD PROJECTS--EXHIBIT RULES**

*Superintendents –Gay Willis and Vonnice Coombs  
Check-in Saturday, August 3, 2019 from  
9:00 to 11:30 AM*

### **I. Cooking and Nutrition**

#### **1. GENERAL RULES APPLY.**

2. All food items entered, such as muffins, bar cookies, one whole pie (any size), rolls or one-half loaf of bread, should be placed inside a clear re-closable plastic bag provided by the 4-H member.
3. A portion of the perishable food will be removed after judging and frozen for exhibiting at EISF.
4. Recipes must accompany food items. Wrap recipe in plastic wrap if it is enclosed with the food.
5. The "Short Term Project" record book should be turned in with the project.
6. There is no refrigeration at the Bonneville County Fair. Please be careful about what foods you choose to exhibit as they will be on display for a week.
7. No commercially prepared mixes will be accepted, except where required or allowed by project book.

8. All food projects will be checked in at the Exhibit Building on Saturday, August 3, between 9:00 and 11:30 AM
9. An exhibit may include a non-perishable food item or poster.

### **II. Food Preservation**

#### **1. GENERAL RULES APPLY.**

2. Pressure canning method may be used by intermediate or Senior only. Juniors may use hot water bath canning method.
3. Canned products must be exhibited in standard canning jars, sealed with flat metal lids, and clean screw bands and entry tag attached.
4. All food preservation entries must have been processed or preserved between the end of Bonneville County fair last year and prior to FCS project check in day of the current year. Entries can be from a food preservation class or from an individual or club project.
5. All entries must be labeled using the 4-H food preservation label available at the Extension Office. labels must be complete. If canning tomato products indicate on label which source of acidification was used.
6. All Entries must include a recipe and source on a 3x5 card, without card entries will be dropped one placing.
7. All recipes must be from an approved source. Approved sources would be any current Extension Publication, USDA Complete Guide to Home Canning, National Center for Home Food Preservation, So Easy to Preserve or the most current ball canning book. **Always remember to adjust canning times or pounds of pressure according to altitude.**
8. Attach entry card to jar with rubber band.
9. Do not decorate lids.
10. Entries will not be opened and are judged on pack, uniformity, color and canning guidelines.
11. Each participant may enter up to 1 entry in each of the following categories:
  - a. Soft Spreads
  - b. Fruit
  - c. Vegetables
  - d. Meat
  - e. Pickles
  - f. Salsa

### Dehydration Requirements

1. Dehydration is open to Cloverbuds, Junior, Intermediates and Seniors
2. Exhibits must be in a clean ½ pint canning jar at least 1/3 full.
3. All dried foods must be labeled with the 4-H dehydrated foods label, available in the Extension office. Labels must be complete.
4. Include a 3x5 card explaining how you would use this product
5. Participants may enter 1 entry from each of the following categories:
  - a. Fruits
  - b. Vegetables
  - c. Fruit leather
  - d. Herbs
  - e. Jerky (must have recipe)



### III. Table Setting

1. **GENERAL RULES APPLY.**
2. Please refer to 4-H table setting Activity guidelines. Available online at: <http://cru.cahe.wsu.edu/CEPublications/c1075e/c1075e.pdf>
3. The Table Setting contest is open to all 4-H members. Participants need not be enrolled in a specific project.
4. Set up and judging will take place on Saturday August 3 starting at 9:00 am in the Exhibit hall.
5. You will need to pre-register in the extension office by Friday July 26, 2019 5:00 pm.
6. Each contestant will choose a theme for your table in one of the three categories. (See 4-H Table Setting Activity Guidelines)
  - Casual
  - Formal
  - Picnic
7. Each contestant will provide a written menu on their table that goes along with their theme (See 4-H Table Setting Guidelines)
8. Contestants will need to supply their own card table, 4ft x 4ft, or smaller for table setting.
9. Contestants will supply all dishes and other supplies needed for the contest.

10. Each contestant will have 30 minutes to set up and interview with the judge.
11. Contestants should be prepared to visit with the judge about your theme that you chose, the menu you selected and how it relates to nutrition.
12. Ribbons will be awarded in each age division when all contestants have completed their presentation. Blue Ribbons can display their table settings at EISF.
  - Junior
  - Intermediate
  - Senior
  - Cloverbud (Participation ribbons, may not display at EISF)
13. Each table setting will be left on display for the duration of the fair.

### MISCELLANEOUS PROJECTS-- EXHIBIT RULES

*Miscellaneous Superintendent– Ann Broughton  
Check-in Saturday, August 3, 2019 from 9:00 to  
11:30 AM*

1. **GENERAL RULES APPLY.**
2. Keep all articles for one project together. Label all parts/pieces of the project in case they are separated. To keep judging more consistent in the Miscellaneous division, all of one project (i.e. Rocketry, etc.) will be judged by one judge.
3. Each project must be labeled clearly with Participants name and which project within the Miscellaneous Division the project is from. Projects in this division include:
  - I. Cake Decorating
  - II. Ceramics
  - III. Crafts
  - IV. Photography
  - V. Robotics
  - VI. Visual Arts
4. All miscellaneous projects will be checked in at the Exhibit Building on Saturday, August 3, between 9:00 and 11:30 AM.
5. Self-directed projects must be cleared with the 4-H Extension Educator before project work begins. To be entered in the fair, each project must include a record book, project requirements/summary checklist, and an exhibit appropriate for the project.



## LIVESTOCK ETHICS

1. All new livestock members are required to attend the Livestock Ethics training. The one-hour training will be held May 6, at 6:30 PM, at the Extension Office. Additional trainings will be provided in individual club meetings. If you are unable to attend a club ethics meeting you must come to the training at the Extension office. If members are unable to attend one of these training sessions they will not be permitted to sell their animals in the Market Animal Sale. Special arrangements will not be made. Any questions contact the office at 529-1390.
2. 4-H/FFA livestock members are expected to provide the daily care, training, and fitting of their project animals, but may receive necessary limited assistance from other youth, volunteers, or parents representing the 4-H/FFA organization.
3. Aside from clipping and grooming, animals must be shown in their natural state. Confirmed suspicion that an animal's appearance has been altered through any means, including internally, externally, or subcutaneously, will be grounds for immediate exhibitor elimination from the market program for the current and following years.
4. Exhibitors are responsible for ensuring that all drugs administered to any market animal meet specified withdrawal periods prior to sale day. Sale animals and carcasses found to have recent injection sites and/or violated medical withdrawal times will be investigated and may result in forfeiture of sale check by seller. Tranquilizers are prohibited.

5. Suspicion of illegal or inappropriate drug use may result in a blood test, the cost of which will be deducted from the sale check and/or premium dollars of exhibitor in question. Positive results of drug tests verifying failure to comply with withdrawal times and/or use of tranquilizers will bar that animal from competition and the 4-H/FFA Market Animal Sale for the current year. Opportunity to sell any species and all premium monies earned in that livestock project will be forfeited. The exhibitor will be barred from showing or selling that or any other market animal of any species for the current and following 4-H/FFA year.
6. Any suspicion of ethics violations will be referred immediately to the Livestock Chair and 4-H Extension Educator.

## LIVESTOCK RULES

BEEF – DAIRY CATTLE – DAIRY GOATS-  
MARKET GOATS- SHEEP –  
SWINE – RABBIT – POULTRY  
*Livestock Chair – KC Perez*  
*Vice President – Matt Warnke*

1. **GENERAL RULES APPLY.**
2. Record books are required. All Livestock record books including a story and applicable inserts, should be included in a 1 inch 3 ring binder. Record books are due Friday, July 26 by 5:00 PM.
3. Livestock will be separated by species.
4. Exhibitors are responsible for meeting the requirements for their livestock project as stated on the University of Idaho State 4-H website.
5. 4-H insurance covers 4-H members. Livestock are not insured. If exhibitors wish to have their animals covered by insurance, responsibility for providing that coverage falls solely on the exhibitors/owner of each project animal.
6. Single animal exhibits may bring one companion animal. Companion animals must be under 1 year and may not be able to breed.
7. The Livestock Chair and the 4-H Extension Educator may excuse any animal from the fairgrounds.

8. Livestock registration/enrollment is due the Friday before your species weigh-in date. If registration is not received by the Friday at 5:00 PM before your weigh-in, your registration will be considered late. Any late registration will be assessed a \$25 late fee, to be given to Advisory Council and to be used for scholarships. Registrations will not be accepted at weigh-ins. On Friday, May 31 at 5:00 PM all livestock registrations are closed.
9. All animals must be free of infectious and transmittable diseases and parasites to enter the fairgrounds. The Livestock Chair and 4-H Extension Educator will determine judgment concerning animal health, a veterinarian may be consulted. The owner, at his or her own expense, may seek a veterinarian's opinion.
10. All animals should be halter broken and manageable before initial weigh-in. The Livestock Chair and the 4-H Extension Educator will determine if the animal is unsuitable, and the animal will be dismissed immediately.
11. Adults cannot show an animal in any 4-H/FFA show. If for any reason a registered 4-H member needs assistance with showing in a scheduled event, that assistance will be given by another 4-H members.
12. Stall decoration is optional; however, there will be a \$50.00 penalty (withheld from sale money from sale participants) for all 4-H members who do not clean their fair stalls.
13. No overnight lodging is available in the barns for youth or adults.
14. All 4-H/FFA animals must remain on the fairgrounds until they are excused following the Market Animal Sale. Exhibitors with special circumstances may request an exception from the 4-H Extension Educator and the Livestock Chair. Animals leaving the grounds early without authorization will result in forfeiture of premium money.
15. Market animals that do not make the minimum final weight requirement will be put into a feeder class.
16. **ALL Sheep** and **ALL Goats** must be identified with a scrapie tag. (Legible unique registration tattoo allowed if applicable) before movement to shows, sales, or other premises. Animals will be inspected at the weigh-in.
17. Prior to the record book and entry form deadline, a 4-H/FFA member may re-designate a market animal to another 4-H or FFA member who is a member of his or her immediate family. This re-designation of market animals will be noted on the livestock show entry form. Both family members must have been enrolled in the same market project and both must have weighed in animals at the appropriate initial weigh in.
18. Exhibitors are eligible to exhibit a maximum of two entries per species, in market classes.
19. All exhibitors will only be allowed to show in one showmanship division.
20. No animal may show in both the breeding and market divisions.
21. There will be no parents or uninsured youth allowed in the sale or show rings at any time. The ring steward and any other ring helpers must be registered 4-H volunteers or members. If there are any questions concerning this please contact the 4-H Extension Educator.

## SPECIAL RULES FOR LIVESTOCK BREEDING CLASSES

1. All breeding livestock must be permanently identified by ear tag or tattoo. All Sheep and Goats are required to have Scrapie Tags or legible unique registration tattoo.
2. All animals will be dehorned in order to show. Breeding meat does are allowed to have horns but are not required.
3. The minimum period of time for ownership or lease for beef, dairy, goat, sheep, and swine breeding animals exhibited at a 4-H sanctioned event will be 90 days prior to the show. (May 6, 2019) If a project animal is leased by a 4-H member, a complete written and signed copy of the lease agreement must be returned to the county extension office by May 6, 2019.

Species	Minimum ownership	Minimum Feed period
4-H Market Goat	70 days	60 days
4-H Market Lamb	70 days	60 days
4-H Market Hog	100 days	80 days
4-H Market Beef	150 days	130 days

4. Ram lambs may be shown if younger than 6 months.
5. No goat bucks may be shown or present on fairgrounds.
6. All bull and bull calves must be tied while on the fairgrounds. Bulls 1 to 2 years of age must be shown with nose rings and tongs, subject to Educator approval. Eligibility to show any bull over 1 year of age must also have approval of 4-H Leader and 4-H Extension Educator.

## MARKET ANIMAL RULES

4-H Market Animal Sale: Thursday, August 8, 2019  
at 6:00 PM

### WEIGH-INS

Beef – March 2, 2019, 8-10:00 AM

Swine – May 4, 2019, 8-10:00 AM

Sheep & Goat – June 1, 2019 8-10 AM

**EISF weigh-in June 1, 2019 10-11:00 AM**

Final- August 5, 2019, 7:30 AM-1:30 PM

Beef- 7:30-9:00 AM, Sheep- 9:00-10:30 AM

Goat- 10:30-12:00 PM, Swine- 12:00-1:30 PM

1. 4-H members participating in 4-H market animal projects must have proof of ownership (brand inspection for beef, bill of sale on goats, sheep, and swine). Ownership of the project animal includes personal possession and responsibility as primary caretaker of the animal. The minimum period of time for ownership, and length of feeding periods for animals fed and exhibited at a 4-H sanctioned event are noted in the Idaho 4-H Project Requirement Handbook.
2. All market livestock must be weighed in at the initial and final weigh-ins on the designated scales at Johnson's Feedlot or Bonneville County Fairgrounds, unless approved by the 4-H Extension Educator and Livestock Chair.
3. All exhibitors who are both 4-H and FFA members must declare at initial weigh in if they will be showing 4-H or FFA.
4. Males of any species weighed-in as market animals must be castrated prior to the initial weigh-in.
5. All market beef, sheep, goats, and swine will be tagged with a tamperproof County Fair tag at the initial weigh in.

6. EISF market animals are not allowed to show in any class at the Bonneville County Fair.
7. All EISF market animals must be weighed-in at appropriate initial weigh-in and tagged with a county fair tag, in order to be tagged with a state fair tag on June 1.
8. Exhibitors may weigh-in no more than five market animals per species per fair at the initial weigh-in.
9. All market animals will only be weighed in one time.
10. All market lambs must be completely slick shorn on or within ten days prior to their initial weigh-in. Market lambs must also be dry, un-haltered, and un-blanketed for the initial and final weigh-in.
11. All livestock must be clean and dry at weigh-in.
12. Weigh-ins are only open to Bonneville County 4-H/FFA members, registrations will **NOT** be accepted at weigh-ins.
13. Each animal weighed-in will be designated as market or feeder at the final fair weigh-in and shown as such. (Feeder animals have not achieved the minimum required weight to qualify as a market animal).
14. At final weigh in there will be leniency for minimum weight requirements at 1 pound for sheep and goats, 3 pounds for swine, and 5 pounds for cattle at the discretion of the weigh in chair.
15. Vaccinations will not be given at weigh-ins. Animal identification, tagging, and weighing will be the only activities that take place at weigh-ins.



## LIVESTOCK SHOW

1. Classes may be combined or eliminated at the discretion of the Livestock Chair, Judge and/or the 4-H Extension Educator. (Dairy and breeding quality classes will be divided by animal age and sex and may be divided by breed. Market classes will be divided by weight.) Awards will be determined at the discretion of the 4-H Educator and judge in single-entry classes
2. Showmanship is required for all 4-H/FFA livestock exhibitors in each species.
3. Show order will be FFA, Senior (ages 14-18), Intermediate (ages 11-13), Junior (ages 8-10), and Novice (All 8-year old's as of January 1 of current year, and any 9-10 year olds who are in their 1<sup>st</sup> year of showmanship per species). Ages are determined as of January 1 of the current year.
4. FFA will have their own showmanship class if there are 3 or more FFA exhibitors in the species.
5. FFA will have their own Round Robin Showmanship Contest if there are 3 or more species involved.
6. A Grand and Reserve Champion Showmen will be selected in each species by forwarding the top two showmen in the Junior, Intermediate and Senior divisions for competition. Novice showmen may be eligible with judge's permission.
7. There will be no riding of any livestock animal while on the fairgrounds.



## LIVESTOCK SHOW – Dress Code

The dress code will be short sleeved or long sleeved professional collared shirts, with long pants that are in good repair and clean. Leather close-toed shoes/boots are also required. Dairy showmen must wear white short sleeved or long sleeved button up shirts or professional collared shirts with white or black long pants with leather close-toed shoes. These rules apply to both the show and the sale.

FFA Dress Code: FFA will wear official dress which includes: White collared button up shirt with FFA Tie, FFA Jacket, clean black pants (skirts are not required for girls), with leather closed-toed shoes/boots. (Depending on weather-Extension Educator, FFA advisor, and/or Judge may ask exhibitors to not wear their jackets for health reasons)

## LIVESTOCK SHOW AWARDS

1. **Premiums** for livestock exhibits will be paid on the blue, red or white award received for the record book.
2. **Exhibitors who fail to abide by the rules** will forfeit premiums.
3. **Showmanship** All youth will receive a blue, red or white flat ribbon. The top two of each division (Jr., I, S) will receive a blue or red rosette. The top 6 of the champion class will receive rosettes.
4. **Quality** All youth will receive a blue, red or white flat ribbon. The top two from each class will receive a blue or red rosette. The top six of the championship rounds will receive rosettes.
5. **Competition** is defined as a contest between two or more animals owned by separate exhibitors. Awards will be given at the discretion of the 4-H Extension Educator and the judge for champions where there is no competition.

## MARKET ANIMAL SALE

1. To be eligible for the 4-H Market Animal Sale, each qualifying exhibitor must meet the necessary requirements including but not limited to: completing the required record book, exhibiting in fitting and showing, exhibiting in market class and receiving a blue or red ribbon (animals receiving a white ribbon in a market class will not be allowed to sell), exhibiting at the sale, meeting all club requirements, and attending the Ethics Training.
2. Each exhibitor may sell in two different species only, one animal in each, at the Bonneville County 4-H Market Animal Sale.
3. Exhibitors showing two animals in a market class must declare at the end of show day which animal they will be selling. If not, the decision is at the discretion of the Livestock Chair, Extension Educator, and Sale Chair.
4. Exhibitors who win grand or reserve market animal must sell the animal except for rabbits and poultry.
5. In the event the same exhibitor owns the Grand and Reserve Champions in the same species, he/she must sell the grand champion animal. The next ranking animal will become the Reserve Champion sale animal.
6. The 4-H market animal sale order begins with the Grand Champion, followed by the Reserve Champion, in the species sequence determined by the Livestock Sale Chair. All other sale positions will be ordered, with all blue ribbon animals in a species selling before red ribbon animals in a species. The blue and red ribbon orders are chosen by a lottery.
7. Floor prices will be determined prior to the 4-H Market Animal Sale.
8. The sale bill weight reflects a standard 3% shrink that compensates for the animal's weight reduction between weigh-in and slaughter.
9. Sale price will reflect a deduction of 3% commission.
10. The Bonneville County Livestock Committee Treasurer will send payment for 4-H market animals. Members should acknowledge their buyers with some form of a thank you.
11. Each exhibitor is responsible for delivering sale animals to the place designated by the buyer following the sale. Any animals not entering the sale need to be designated to the livestock president or animal disbursement chairman by Thursday, August 8, at 5:00 PM
12. No on-site slaughter is allowed on the fairgrounds.
13. Meat rabbit or poultry participants must provide buyers a means of transporting the rabbits from the fairgrounds. (Box, cage, covered basket)
14. The 4-H/FFA member will return the sale value of any animal(s) to the buyer if it is condemned at slaughter and/or it is sold and found to have been drugged and/or medicated with disregard for withdrawal requirements, and/or appropriate injection sites.
15. Animals sold through the Bonneville County 4-H/FFA Market Animal Sale are not eligible to be sold at other youth livestock auctions.
16. Sale checks should be out when funds are available.



# Large Animal

## **BEEF**

*Beef Superintendent- Steve Boyle  
Tuesday, August 6, 2019 at 4:00 PM*

1. All market beef **MUST** be halter broke and manageable prior to initial weigh-in.
2. The minimum final weight will be 1,000-pound steers and 925-pound heifers.
3. Exhibitors must have a brand inspection at the time of final weigh-in to prove ownership. Market beef without inspections may be held after the sale by the brand inspector.
4. All cattle will be restrained using an appropriate halter plus a neck rope, when stalled.
5. Beef will be inspected at the final weigh-in. Steers showing evidence of staginess or heifers showing evidence of pregnancy will be disqualified from the market show/sale by the Livestock Chair and the 4-H Extension Educator.
6. All cattle must be dehorned.
7. Novice = All 8-years old as of January 1 of current year, and any 9-10 year olds who are in their 1<sup>st</sup> year of showmanship.



## **BEEF CLASSES:**

<b>Class</b>	<b>Class Name</b>
<b>101</b>	Showmanship Novice, Junior, Intermediate, Senior, FFA
	Grand Champion & Reserve Grand Champion Showmanship
<b>102</b>	Market Steers
	Grand Champion & Reserve Grand Champion
<b>103</b>	English Breeds Class (100% Hereford, Angus, Shorthorn, South Devon or cross thereof)
<b>Breeding Beef Classes</b>	
<b>104</b>	Heifer Calves - born Jan. 31 <sup>st</sup> , 2019 and after
<b>105</b>	Winter Heifer Calves - born September 1 <sup>st</sup> , 2018 - January 31 <sup>st</sup> , 2019
<b>106</b>	Senior Heifer Calves –born before September 1 <sup>st</sup> , 2018 and after July 31, 2019
<b>107</b>	Yearling Heifers – born January 1 <sup>st</sup> – July 31 <sup>st</sup> , 2018
<b>108</b>	Bred Heifers – born before July 31 <sup>st</sup> , 2017
<b>109</b>	Cow/Calf – Calf must not be older than 250 days
	Grand Champion & Reserve Grand Champion Female
<b>110</b>	Bull Calf under 1 year
<b>111</b>	Bulls 1 to 2 years of age- Any bull over 1 year of age <b>must have approval of 4-H Leader and 4-H Extension Educator</b> and be shown with nose ring and tongs at discretion of 4-H Educator.
	Grand Champion & Reserve Grand Champion Bull

## DAIRY CATTLE

*Dairy Superintendent- Brenda Chamberlain*  
*Monday, August 5, 2019 at 5:00 PM*

1. Classes will be determined at fair time.
2. Cows over two years old must be in milk, or pregnant.
3. Novice = All 8 year olds as of January 1 of current year, and any 9-10 year olds who are in their 1<sup>st</sup> year of showmanship.



## DAIRY CATTLE CLASSES:

Class	Class Name
201	Showmanship Novice, Junior, Intermediate, Senior, FFA
	Grand Champion & Reserve Grand Champion Showmanship
202	Spring Heifer Calf – born after Feb. 28 <sup>th</sup> , 2019
203	Winter Heifer Calf – born after Nov. 30 <sup>th</sup> , 2018 and prior to March 1 <sup>st</sup> , 2019
204	Fall Heifer Calf – born after Aug. 31 <sup>st</sup> , 2018 and prior to Dec. 1 <sup>st</sup> , 2018
205	Summer Yearling – born after May 31 <sup>st</sup> , 2018 and prior to Sept. 1 <sup>st</sup> , 2018
206	Spring Yearling – born after Feb. 28, 2018 and prior to June 1 <sup>st</sup> , 2018
207	Winter Yearling – born after Nov. 30 <sup>th</sup> , 2017 and prior to March 1 <sup>st</sup> , 2018
208	Fall Yearling – born after Aug. 31 <sup>st</sup> , 2017 and prior to Dec. 1 <sup>st</sup> , 2017
	Junior Champion & Reserve Junior Champion
209	Dry Cow – 3 to 4 years old
210	Dry Cow – 5 years and older
211	2 Year Old Cows – born Sept. 1 <sup>st</sup> – Aug. 31 <sup>st</sup> , 2017
212	3 Year Old Cows – born Sept. 1 <sup>st</sup> – Aug. 31 <sup>st</sup> , 2016
213	4 Year Old Cows – born Sept. 1 <sup>st</sup> – Aug. 31 <sup>st</sup> , 2015
214	Aged Cows – born before Sept. 1 <sup>st</sup> , 2014
	Senior Champion & Reserve Senior Champion
	Grand Champion & Reserve Grand Champion Female
215	Bull Calf – under 6 months
216	Junior Breeder – a combination of two animals owned by the exhibitor with at least one bred by exhibitor.

## DAIRY GOATS

*Dairy Goat Superintendent -Amy McClellan  
Monday, August 5, 2019 at 6:00 PM*

1. Breeding does and wethers are not allowed to have horns.
2. No dairy goat bucks may be shown or present on fairgrounds.
3. Acceptable breeds are: Alpine, LaMancha, Nubian, Oberhasli, Toggenburg, Saanen, Sable, or Nigerian Dwarf, or any cross thereof.
4. Dairy goat classes 301-308, and 314, 315 have a limit of 2 entries per class. Dairy goat classes 309-313 and 316 have a limit of 1 entry.
5. Does 2 years and older must have kidded at least once.
6. Milk out time for dairy goats will begin at 8:00 AM the day of the show. Animals may be milked out before 8:00 A.M but must be milked again starting at 8:00 AM.
7. All goats must be permanently identified by scrapie tag and/or legible unique registration tattoo.
8. Novice = All 8 year olds as of January 1 of current year, and any 9-10 year olds who are in their 1<sup>st</sup> year of showmanship.
9. Classes will be determined at fair time.



## DAIRY GOAT CLASSES:

Class	Class Name
301	Showmanship Novice, Junior, Intermediate, Senior, FFA
	Grand Champion & Reserve Grand Champion Showman
302	Junior Kid – Born on or after April 1, 2019
303	Early Junior Kid- born on or after February 1, 2019 before April 1, 2019
304	Senior Kid – born after July 31, 2018 and before February 1, 2019
305	Yearling – not in milk, born between July 31, 2017 and July 31, 2018
306	Yearling Milkers
307	2 Years and Under 4 Years born between July 31, 2015 and July 31, 2017
308	4 Years and Over, born before July 31, 2015
	Junior Champion
	Senior Champion
	Grand Champion & Reserve Grand Champion
309	Dam & Daughter
310	Produce of Dam – At least 2 does from the same dam, any age
311	Get of Sire – At least 3 from the same sire
312	Best of Herd – 3 does of any age owned by exhibitor
313	Best Udder
314	Dairy Wether
315	Wether Pull, Pack, Play
316	Cloverbud Goat Participation Class – <b>all animals MUST weigh less than the child.</b>

## MARKET GOATS

Market Goat Superintendent-

Hillary Wasniewski

Wednesday, August 7, 2019 at 1:00 PM

1. The minimum final weight will be 65 pounds.
2. Goats must be at least ½ Boer meat goat breed.
3. Only weaned goats will be eligible for show and sell. Goats showing yearling teeth will be disqualified.
4. Market Goats will be checked at initial and final weigh-ins. Billy goats will be disqualified as well as any wethers showing evidence of staginess. Decisions are at the discretion of the Livestock Chair and 4-H Educator.
5. No muzzles will be allowed.
6. All market goats must be born after December 1<sup>st</sup> of the current 4-H season.
7. Horned goats are prohibited for market classes. Breeding does may have horns but are not required.
8. ALL goats must be identified with a scrapie tag before movement to shows, sales, or other premises.
9. All Market Goats must have a Country of Origin Labeling (COOL) document and a bill of sale in the record book
10. Novice = All 8-year old's as of January 1 of current year, and any 9-10 year olds who are in their 1<sup>st</sup> year of showmanship.

## MARKET GOAT CLASSES

Class	Class Name
401	Showmanship: Novice, Junior, Intermediate, Senior, FFA
	Grand Champion & Reserve Grand Champion Showmanship
402	Market Goat
	Grand Champion & Reserve Grand Champion Market Goat
<b>Jr. Does Never Kiddled</b>	
403	Jr. Does – 0 to 6 months, born after January 31, 2019
404	Jr. Does – 6 to 12 months, born between July 31, 2018 and January 31, 2019
405	Jr. Does – 12 to 24 months, born between July 31, 2017 and July 31, 2018
	Jr. Champion Doe & Reserve Champion Doe
<b>Sr. Does Having Kiddled</b>	
406	Sr. Does – under 24 months, born after July 31, 2017
407	Sr. Does – 24 to 36 months, born between July 31, 2016 and July 31, 2017
408	Sr. Does – 36 months and up, born before July 31, 2016
	Sr. Champion Doe & Reserve Grand Champion Doe
	Grand Champion & Reserve Grand Champion Doe



## SHEEP

*Sheep Superintendent- Doug Barnard  
Wednesday, August 7, 2019 at 7:30 AM*

1. The minimum final weight will be 110 pounds.
2. Only weaned lambs will be eligible for show and sale. Lambs showing yearling teeth will be disqualified.
3. All market lambs must be completely slick shorn on or within ten days prior to their initial weigh-in, final weigh in, and sale. Market lambs must also be dry, un-haltered, and unblanketed for the initial and final weigh-ins.
4. Market lambs will be checked at initial and final weigh-ins. Ram lambs will be disqualified as well as any wethers showing evidence of staginess. Decisions are at the discretion of the 4-H Extension Educator and the Livestock Chair.
5. No muzzles will be allowed.
6. ALL sheep must be identified with a scrapie tag before movement to shows, sales, or other premises.
7. All lambs must be dehorned.
8. All market lambs must have a Country of Origin Labeling (COOL) document and a bill of sale in the record book
9. Novice = All 8 year olds as of January 1 of current year, and any 9-10 year olds who are in their 1<sup>st</sup> year of showmanship.

## SHEEP CLASSES

Class	Class Name
601	Showmanship Novice, Junior, Intermediate, Senior, FFA
	Grand Champion & Reserve Grand Champion Showmanship
602	Market Lamb
	Grand Champion & Reserve Grand Champion Market Lamb
603	Ewe Lambs – born Jan. 1 <sup>st</sup> , 2019 and after
604	Ewe Lambs – born Sept. 1 <sup>st</sup> , - Dec. 31 <sup>st</sup> , 2018
605	Yearling Ewes – born Sept. 1 <sup>st</sup> , 2017 – Aug. 31 <sup>st</sup> , 2018
606	Aged Ewes – born before Sept. 1 <sup>st</sup> , 2017
	Grand Champion & Reserve Grand Champion Ewe
607	Pair of Ewe Lambs – must be exhibited in class 102 or 103
608	Ram Lambs – under 6 months
	Grand Champion & Reserve Grand Champion Ram
609	Junior Flock – 2 breeding ewes any age and one ram under 6 months



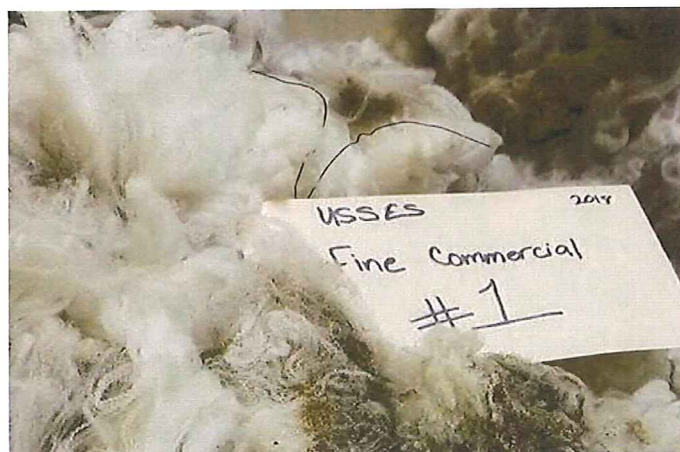
## FIBER GOAT AND SHEEP

Fiber Animal Superintendent- Ben Maher  
Wednesday, August 7, 2019 at 12:00 PM

1. ALL goats and sheep must be identified with a scrapie tag before movement to shows, sales, or other premises.
2. All goats and sheep must have a Country of Origin Labeling (COOL) Document and bill of sale in the record book
3. Animals must have been shorn within the last 365 days.
4. Participants must provide a wool/fiber sample from seasonal animals. Samples should be presented in a clear plastic bag and must be from current year and not represent more than one years growth. Fleeces/Fibers must be free of vegetable matter, contamination and parasites. Fleeces may not be washed or enhanced.
5. Novice = All 8-year old's as of January 1 of current year, and any 9-10 year olds who are in their 1<sup>st</sup> year of showmanship.
6. This class does not qualify for Round Robin.

### FIBER GOAT/SHEEP CLASSES:

Class	Class Name
501	Showmanship: Novice, Junior, Intermediate, Senior, FFA
	Grand Champion & Reserve Grand Champion Showmanship
502	Fine
503	Medium
504	Course



## SWINE

Swine Superintendent- Jeanna and Jared Hill  
Tuesday, August 6, 2019 at 7:30 AM

1. The minimum final weight will be 230 pounds.
2. Barrows or gilts only.
3. Hogs will be inspected at the final weigh-in. Hogs will be disqualified for any evidence of pigginess, staginess, scars, foul sheath, sores, or bruises and any blemish that impairs the carcass. Hogs with lice, mange, erysipelas, atrophic rhinitis, or any other contagious or infectious disease will be disqualified. Decisions are at the discretion of the 4-H Extension Educator and the Livestock Chair; a veterinarian may be consulted.
4. Novice = All 8 year olds as of January 1 of current year, and any 9-10 year olds who are in their 1<sup>st</sup> year of showmanship.

### SWINE CLASSES:

Class	Class Name
701	Showmanship Novice, Junior, Intermediate, Senior, FFA
	Grand Champion & Reserve Grand Champion Showmanship
702	Market Swine
	Grand Champion & Reserve Grand Champion Market Swine
703	Breeding Gilt
	Grand Champion & Reserve Grand Champion Breeding Gilt



## Small Animal

### ***DOG SHOW***

*Dog show Superintendent- Marilynne  
Manguba*

*Monday, August 5, 2019 8:00 AM*



#### **RULES**

1. GENERAL RULES APPLY.
2. Record books are required. All record books including a story and applicable inserts, should be included in a 1 inch 3 ring binder. Record books are due July 26<sup>th</sup> by 5:00 PM
3. Dogs shown must be the official 4-H project animal(s) included in the Record Book. Dogs must be identified with a Permanent Individual Animal Record sheet.
4. Dogs will be excused following judging.
5. The show area and obedience ring will be located at the Melaleuca 4-H Events Center
6. Bitches in heat are not permitted to compete.
7. A handler may not carry or offer food in the obedience ring.
8. Dogs must wear well-fitting collars of leather, fabric, or chain. Fancy collars, spiked collars or other special training collars are not permitted.
9. Physical or verbal discipline of dogs shall not be permitted except in case of attack on a person or another dog.
10. Scoring will be as described in the Eastern Idaho State Fair Book.
10. Novice = All 8 year olds as of January 1 of current year, and any 9-10 year olds who are in their 1<sup>st</sup> year of showmanship.

#### **DOG CLASSES:**

<b>Class</b>	<b>Class Name</b>
<b>801</b>	Showmanship Novice, Junior, Intermediate, Senior, FFA
	Grand Champion & Reserve Grand Champion Showmanship
<b>802</b>	Phase I, Beginner – Class A All on 6' leash
<b>803</b>	Phase I, Beginner – Class B All on 6' leash
<b>804</b>	Phase II, Beginner Novice On and off leash
<b>805</b>	Phase III, Novice On and off leash
<b>806</b>	Phase IV, Graduate Novice Off leash, Drop on Recall,
<b>807</b>	Phase V, Open Everything done off leash
<b>808</b>	Phase VI, Graduate Open Everything done off leash
<b>809</b>	Phase VII, Utility Everything done off leash
<b>810</b>	*Rally (Novice, Advanced, Excellent), Everything done off leash
<b>811</b>	*Cloverbud Participation Class- Animal <b>MUST</b> weigh less than the child.

***\*Not eligible for EISF***

## **POULTRY SHOW**

*Poultry Superintendents-*

*Kim Weiland and Sherry Glick*

*Tuesday, August 6, 2019 2:00 PM*

### **1. GENERAL RULES AND LIVESTOCK RULES APPLY.**

2. Poultry shown must be the official 4-H project animal(s) included in the Record Book and the property of the 4-H member or have a lease form in the office.
3. No bird exhibiting any signs of disease or parasite will be allowed to show.
4. If a bird is shown to be unmanageable, it will be released from the fair at the discretion of the Livestock Chair and 4-H Educator.
5. Poultry should be shown in clean and natural condition. Grooming that does not alter original state is permitted.
6. All poultry must have an identification band
7. Poultry will be cooped in on Monday August 5 starting at 9:00 AM and will remain at the fairgrounds for the duration of the fair.
8. **Quality** classes will be judged according to current breed standards.
9. Blue ribbon poultry qualify for the **EISF** 4-H Poultry Show. Qualifying exhibitors must submit EISF registration entry form to the Extension Office.
10. Meat Pen

#### Meat Pen Guidelines (poultry)

- A. Meat pens consist of 3 chickens all of the same breed and variety
- B. 6-8 weeks old
- C. Weight is 4+ lbs
- D. All poultry must be weighed in the presence of a judge
11. Novice = All 8 year olds as of January 1 of current year, and any 9-10 year olds who are in their 1<sup>st</sup> year of showmanship.

### **POULTRY CLASSES**

<b>901</b>	Showmanship. Novice, Junior, Intermediate, Senior, FFA
	Grand Champion & Reserve Grand Champion Showmanship
	<b>Breeding Poultry Classes</b>
<b>902</b>	Pullet
<b>903</b>	Cockerel/ Roosters
<b>904</b>	Hens
	Grand Champion & Reserve Grand Champion
	<b>Other Classes</b>
<b>905</b>	Ducks
<b>906</b>	Pheasants
<b>907</b>	Turkeys
<b>908</b>	Pigeons
	Grand Champion & Reserve Grand Champion other poultry
	Grand Champion and Reserve Grand Champion Overall
<b>909</b>	Cloverbud Participation Class- animal <b>MUST</b> weigh less than the child.
<b>910</b>	Meat Pen 4+ pounds
	Grand Champion and Reserve Grand Champion Meat Pen



## ***RABBIT SHOW***

*Rabbit Superintendent- Emily Wasemiller  
Monday, August 5, 2019 10:00 AM*

### **RULES**

#### **1. GENERAL RULES and LIVESTOCK RULES apply.**

2. Rabbits shown must be the official 4-H project animal(s) included in the Record Book and the property of the 4-H member/ or have lease agreement.
3. Rabbits must have a permanent tattoo in their left ear.
4. Rabbits must be in good health and without sore hocks; sick rabbits and rabbits with sore hocks will be discharged.
5. Rabbits should be shown in natural condition. Grooming that does not alter original state is permitted.
6. Rabbits will be checked in starting at 8:00 AM on Monday, August 5 and must be checked in and penned 30 minutes prior to show. Rabbits will remain on the fairgrounds for the duration of the fair.
7. Quality classes will be judged according to current breed standards.
8. Meat Pen Guidelines (rabbit)
  - A. Meat pens consist of three rabbits, all of the same breed and variety, but does not have to be from the same litter
  - B. Age limit is 10-12 weeks
  - C. Weight minimum 4 pounds each
  - D. All rabbits must be weighed in the presence of the judge
9. Mixed breeds are not eligible for Grand Champion, Reserve Grand Champion or the Eastern Idaho State Fair.
10. Blue ribbon rabbits qualify for the EISF 4-H Rabbit Show. Qualifying exhibitors must submit EISF registration entry form to the Extension Office.
11. Novice = All 8 year olds as of January 1 of current year, and any 9-10 year olds who are in their 1<sup>st</sup> year of showmanship.



### **RABBIT CLASSES:**

<b>Class</b>	<b>Class Name</b>
<b>1001</b>	Showmanship Novice, Junior, Intermediate, Senior, FFA
	Grand Champion & Reserve Grand Champion Showmanship
<b>1002</b>	Senior Buck: Under 9 pounds --6 months or older
<b>1003</b>	Senior Doe: Under 9 pounds --6 months or older
<b>1004</b>	Junior Buck: Under 9 pounds --Under 6 months
<b>1005</b>	Junior Doe: Under 9 pounds --Under 6 months
<b>1006</b>	Senior Buck: Over 9 pounds --8 months or older
<b>1007</b>	Senior Doe: Over 9 pounds --8 months or older
<b>1008</b>	Intermediate Buck: Over 9 pounds --6 months but less than 8 months
<b>1009</b>	Intermediate Doe: Over 9 pounds --6 months but less than 8 months
<b>1010</b>	Junior Buck: Over 9 pounds --3 months but less than 6 months
<b>1011</b>	Junior Doe: Over 9 pounds --3 months but less than 6 months
	Grand Champion and Reserve Grand Champion Breeding
<b>1012</b>	Meat Pen Minimum 4 pounds – Less than 10 weeks.
	Grand Champion and Reserve Grand Champion Meat Pen
<b>1013</b>	Cloverbud Participation Class- Animal <b>MUST</b> weigh less than the child.
<b>1014</b>	Rabbit Agility Under 9 pounds—must be at least 12 weeks at time of show
<b>1015</b>	Rabbit Agility Over 9 pounds – must be at least 12 weeks at time of show

## HORSE

*Horse Chair – Hilary Wasniewski*

*Driving, Working Ranch Horse*

*Bank of Commerce Horse Arena*

*August 2, 2019, 8:00 AM*

*Showmanship, Western, English, Horsemanship,*

*Dressage, Reining & Trail*

*Bank of Commerce Horse Arena,*

*August 3, 2019, 8:00 AM*

## RULES

1. **GENERAL RULES APPLY.**
2. GUIDELINES FOR THE 2019 EISF 4-H HORSE SHOW APPLY.
3. Exhibitors are responsible for knowledge of and adherence to all rules.
4. The official rules of this show will be US Equestrian rules. You may access this information at:  
<https://www.usef.org/compete/resources-forms/rules-regulations/rulebook>
5. Horse participants must enroll in 4-H and pay dues before attending a club meeting and riding sessions.
6. 4-H member accident insurance coverage is mandatory and is included in annual registration fees.
7. Horses must have been managed by the 4-H member for a minimum of 90 days prior to the Bonneville County 4-H Fair Horse Show. The 2019 Bonneville County 4-H horse project enrollment deadline is April 15, 2019.
8. No stallions may be shown in the Bonneville County 4-H Horse Show.
9. FFA may have their own showmanship class if there are three or more participants. The champions would attend the FFA round robin contest if there were 3 or more species.
10. All youth participants in Idaho 4-H horse activities or events must wear an ASTM-SEI approved equestrian helmet whenever mounted on an equine, or are in a vehicle (cart, wagon, buggy, etc.) being pulled by an equine. FFA is also required to wear a helmet at the fair or any other 4-H event they attend because it is a University of Idaho event.

## HORSE ETHICS

1. Good sportsmanship and ethical behavior are required of all exhibitors.
2. Use of performance altering drugs on horses is prohibited. Suspicion of drug use may result in a blood test, the cost of which will be deducted from any premium allocated to that exhibitor in question. Positive results of drug tests or a veterinarian's opinion may bar that exhibitor from the 2019 and 2020 Bonneville County 4-H/FFA Fairs and the 2019 and 2020 Eastern Idaho State Fair.

## HORSE SHOW

1. Horse Show **Entry and Release Forms** must be completed and submitted to the Extension Office no later than Friday, July 26, 2019 5:00 PM. **Late entries will not be accepted.**
2. 2019 Horse Show participants are those Bonneville County 4-H/FFA members who:
  - Enrolled in a designated horse 4-H project(s) by April 15, 2019 before 5:00 PM.
  - FFA members who are enrolled in FFA and have completed their freshman year of high school.
  - Paid state and district horse 4-H council fees by April 15, 2019.
  - Submitted the appropriate horse project record book and skills checklists FFA must submit focus skills checklist by July 26, 2019 before 5:00 PM
  - Submitted the Horse Show Entry and Release form, by July 26, 2019 before 5:00 PM.
  - Are present at the Horse Show arena on August 2 and/or August 3, 2019.
3. Exhibitor must show their 4-H project horse(s) as identified in the submitted record book; must own/lease the horse(s) used, provide primary care, feeding and management of the horse(s) for a minimum of 90 days prior to exhibiting.
4. Horses showing signs of distress (wheezing, stumbling, excessive temperature, and/or excessive heart rate) will be dismissed by the Horse Chair and the 4-H Extension Educator. A veterinarian's letter will then be required to continue Horse Show activities.

5. The Bonneville County 4-H Horse show will begin Friday, August 2 at 8:00 AM and August 3 at 8:00, registration begins at 7:30 AM both days, at the Bank of Commerce Horse Arena
6. Contestant numbers may be picked up after 7:30 AM at registration in the arena on the day of the show.
7. Patterns will be provided in registration packet and will be posted the day of the show at the arena, except for dressage patterns, which will be available at the extension office July 26, 2019.
8. Classes may be divided into sections and may be canceled at the discretion of the Horse Chair and the 4-H Extension Educator if less than three enter.
9. Rosettes will be awarded to 1-6 in each class. Judge will use Danish system for places.
10. No horse may be shown by more than one exhibitor in any one class.
11. No exhibitor may show more than one horse in any one class except team events in the driving division.
12. Halter Showmanship is required for the first and second year of Western and English horse projects.
13. No cross-county entry.
14. The two top showmen will advance to the Round Robin contest on August 8, 2019.
15. The Safety System (Quarter System) of showmanship is required.
16. Exhibitors entering the Walk-Trot classes may not cross enter into any three gait (walk, trot, canter) classes.
17. In Bonneville County, you may show in both Pony and Horse Equitation riding. If you qualify in both, you may only advance to state in one class of your choice.
18. Exhibitors may enter as many classes as they qualify for at county level but EISF rules will govern entry at that level.
19. Horses entered in the Snaffle/Bit Hackamore Training class may not enter any other riding classes.
20. Small and Medium ponies (13.2 hands and under) must show as ponies; large ponies (13.2 – 14.2 hands) may show as either horses or ponies, but not both.
21. ***Classes may not fall in numeric order.***
22. Only the competitor(s) may ride or drive the horse(s) on the day of the show. No adults are allowed on horses during a show. A warning will be made and at the discretion of the Horse Chair and 4-H Extension Educator the horse may be disqualified for the next class.
23. In the event of a tie in the jumping class, the tie will be broken based on equitation of the rider.
24. No trotting and or galloping outside of arenas.
25. Hat or Helmet Must be worn in ALL showmanship classes.
26. Helmet must be worn in ALL riding, driving, trail, and working ranch classes. This is true for all 4-H horse meetings, events, and activities.
27. Refer to the EISF Junior Horse Show Rule Book for acceptable bits for dressage.
28. Tack may be checked during the show by a designated individual.
29. **Disqualifications:**  
The 4-H Extension Educator, Horse Chair and/or the judge have the authority to dismiss or disqualify an exhibitor from a class or from the show for:
  - unnecessary roughness
  - touching your horse with your hand in front of or behind the saddle (only the judge may disqualify for this fault)
  - abuse of horse
  - unsound horse
  - unsafe horse
  - fall of horse or rider (only the judge may disqualify for this fault)
  - lack of required appointments
  - use of prohibited appointments
  - use of performance altering drugs on horse
  - failure to follow pattern and/or judge's instructions (only the judge may disqualify for this fault)

## HORSE SHOW CLASSES:

1	Senior Showmanship
2	Intermediate Showmanship
3	Junior Showmanship
4	*Dressage
5	Jumper
6	English Equitation-Intermediate & Senior
7	English Equitation-Junior
8	Senior Bareback Equitation
9	Intermediate Bareback Equitation
10	Junior Bareback Equitation
11	Pony Bareback Equitation
12	Senior Western Equitation
13	Intermediate Western Equitation
14	Junior Western Equitation
15	Pony Western Equitation
16	Walk Trot Western/English Equitation
17	*Gaited Equitation
18	**Western Horsemanship
19	Snaffle-bit/Hackamore Training
20	**Western Reining (Senior & Int. only)
21	Senior Trail
22	Intermediate Trail
23	Junior Trail
24	*Walk Trot Trail
25	Single Pleasure Driving: 14.2 Hands & Above
26	Single Pleasure Driving: Below 14.2 Hands
27	Single Utility Driving: 14.2 Hands & Above
28	Single Utility Driving: Below 14.2 Hands
29	Single Cone Driving
30	Team Cone Driving
31	Team Pleasure Driving: 14.2 Hands & Above
32	Team Pleasure Driving: Below 14.2 Hands
33	Team Utility Driving: 14.2 Hands & Above
34	Team Utility Driving: Below 14.2 Hands
35	WRH Dummy Roping (Unit 1)
36	WRH Ranch Roping (Unit 2)
37	WRH Ranch Roping (Unit 3)
38	Working Ranch Horse (Unit 1)
39	Working Ranch Horse (Unit 2)
40	Working Ranch Horse (Unit 3)
41	WRH Team Sorting

**\*Classes do not go to Eastern Idaho State Fair.**

**\*\*Open to all ages, however, an exhibitor may enter Western Horsemanship OR Western Reining, but not both.**

*FFA members who qualify in a riding class to attend EISF will need to wear Western Attire and helmet at the EISF and not their FFA jacket.*



# Bonneville County Fair schedule 2019

## Friday Aug 2

- 7 am** Horse Show Registration @ Bank of Commerce Horse Arena  
Driving and Working Ranch
- 8 am** Horse Show

## Saturday Aug 3

- 7 am** Horse Show Registration @ Bank of Commerce Horse Arena  
Showmanship, Western, English, Dressage, Reining, And Trail
- 9 am** FCS Check-In @ Exhibit Hall
- 9 am** Interview Judging @ Exhibit Hall
- 9 am** Table Setting Contest Begins @ Exhibit Hall
- 12 pm** Orientation for FCS Judges and Helpers @ Exhibit Hall
- 1 pm** Fair Setup @ Fairgrounds
- 2 pm** Exhibit Hall Closed to Exhibitors for Judging of FCS Projects

## Monday Aug 5

- 6 am** Barns Open
- 7:30 am** Beef Final Weigh-In
- 8 am** Dog Show @ Melaleuca 4-H Events Center
- 9 am** Exhibit Hall Open
- 9 am** Sheep Final Weigh-In
- 9:30 am** Rabbit Show Check-In @ TBD
- 10 am** Rabbit Show @ Melaleuca 4-H Events Center
- 10:30 am** Goat Final Weigh-In
- 12 pm** Swine Final Weigh-In
- 2 pm** Livestock Judging Contest @ Melaleuca 4-H Events Center
- 5 pm** Dairy Cattle Show @ Melaleuca 4-H Events Center \*\*
- 6 pm** Dairy Goat Show @ Melaleuca 4-H Events Center \*\*
- 9 pm** Exhibit Hall and Barns Close

## Tuesday Aug 6

- 6 am** Barns Open
- 7:30 am** Swine Show @ Melaleuca 4-H Events Center \*\*
- 9 am** Exhibit Hall Open
- 2 pm** Poultry Show

- 4 pm** Beef show @ Melaleuca 4-H Events Center \*\*
- 9 pm** Exhibit Hall and Barns Close

## Wednesday Aug 7

- 6 am** Barns Open
- 7:30 am** Sheep show @ Melaleuca 4-H Events Center \*\*
- 9 am** Exhibit Hall Open
- 1 pm** Fiber Goat show @ Melaleuca 4-H Events Center \*\*
- 2 pm** Market Goat show @ Melaleuca 4-H Events Center \*\*
- 4 pm** Livestock Judging @ Melaleuca 4-H Events Center \*\*
- 6 pm** Family Potluck, Raffle and High School Senior Awards @ Bonneville County Fairgrounds
- 8 pm** Parking lot Dance
- 9 pm** Exhibit Hall and Barns Close

## Thursday Aug 8

- 8 am** Round Robin Contest @ Melaleuca 4-H Events Center
- 9 am** Exhibit Hall Opens
- 9 am** Cupcake Wars @ Exhibit Hall Kitchen
- 10 am** Small Animal Round Robin @ Melaleuca 4-H Events Center
- 11 am** Pee Wee Parade @ Melaleuca 4-H Events Center
- 1 pm** Rabbit Agility @ Melaleuca 4-H Events Center
- 2 pm** Style Review @ Exhibit Hall
- 5:30 pm** Buyers BBQ
- 6 pm** Market Animal Sale @ Melaleuca 4-H Events Center
- 9 pm** Livestock released except Sale Animals
- 9 pm** Exhibit Hall and Barns Closed

## Friday Aug 9

- 9 am** Livestock Record Book Check out
- 9 am** FCS Project pick up
- 10 am** Barn Clean Up

\*\* Line-up for shows will be begin 15 minutes before the scheduled show.

\*\* All Livestock shows begin with Showmanship, followed by Market and then Breeding.

# OPEN CLASS ENTRY FORMS:

Anyone can enter the  
photography, quilt,  
cookie contest and the  
Pee Wee Parade.

You do not have to be  
affiliated with the 4-H  
program.

# 2019 Bonneville County Fair

## OPEN CLASS AMATEUR

### PHOTOGRAPHY

Stephen Gamache – CHAIR

**Entries:** must be made Friday, August 2 FROM 1 P.M. until 5 P.M. at the Bonneville County Extension Office, 7475 So. 15<sup>th</sup> E. Idaho Falls, ID 83404. No entries will be received after this time.

**Conditions:** ALL PHOTOGRAPHS MUST BE MOUNTED AND/OR MATTED, with a hanger or hook attached to the center back, 1 to 2 inches down from the top, which can hang from a wire (a paper clip, **securely attached**, can function as a hook). Pictures may be mounted by any mounting device including photo corners if mounted securely. Poster board is not an acceptable mount. Any size pictures or snapshots may be entered; however odd shaped mounts in amateur prints are discouraged. Prints exhibit better if larger than 8" by 10".

Framed photos will not be accepted. Photo collages will not be accepted. All pictures must be in condition suitable for exhibition. Work must be original and cannot be entered more than one year. Officials reserve the right to not display any picture that does not conform to regulations, is deemed to be objectionable, or which is not of high standards for family viewing.

THE NAME AND ADDRESS OF THE PHOTOGRAPHER should be on the upper left hand corner of the back of all prints. Also indicate the division and class on the back of each photo.

**To Enter:** Fill out the entry form listing the Division and Class and pay your entry fee. Be sure all conditions listed are met.

**Entry Fees:** \$5 for the first photo entered, \$1 for each additional photo entered. Each exhibitor is entitled to five total entries, but only one in any class.

**Entries** will be ribboned and on display in the Jack Hamilton Exhibit building from August 6-9 and will be released on August 10 from that building 9:00 A.M. -4:00 P.M. or picked up the following week from the Bonneville County Extension Office. Premiums may be picked up from the office at that time.

#### Premiums:

First - \$10	Third - \$6
Second - \$8	Honorable Mention – ribbon

#### Divisions & Classes:

(Indicate division and class on the back of each photo)  
The combining or subdividing of classes will vary depending on the number or merit of entries in any given year, at the discretion of the official. Pictures entered in the wrong class may be disqualified or changed.

**Division A:** Junior (ages 12 and younger as of July 1, 2019)

**Division B:** Youth (ages 12 to 18 as of July 1, 2019)

**Division C:** Adult (ages 18 and older as of July 1, 2019)

#### Classes:

101 – Scenic	102 – Portrait
103- Action/sport	104 – Animals
105-Still Life	106- Macro

### Open Class Photography Entry Form-Bonneville County Fair 2019

Name \_\_\_\_\_

Address \_\_\_\_\_

Phone # \_\_\_\_\_

Division/Class \_\_\_\_\_

**Open Class Photography Entry Form-Bonneville County Fair 2019**

Name\_\_\_\_\_

Address\_\_\_\_\_

Phone#\_\_\_\_\_

Division/Class\_\_\_\_\_

**Open Class Photography Entry Form-Bonneville County Fair 2019**

Name\_\_\_\_\_

Address\_\_\_\_\_

Phone#\_\_\_\_\_

Division/Class\_\_\_\_\_

**Open Class Photography Entry Form-Bonneville County Fair 2019**

Name\_\_\_\_\_

Address\_\_\_\_\_

Phone#\_\_\_\_\_

Division/Class\_\_\_\_\_

**Open Class Photography Entry Form-Bonneville County Fair 2019**

Name\_\_\_\_\_

Address\_\_\_\_\_

Phone#\_\_\_\_\_

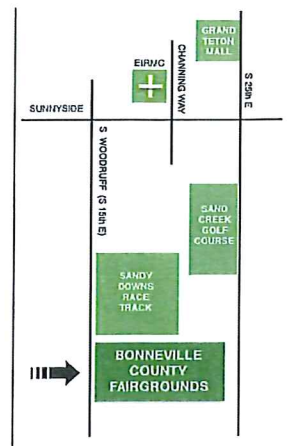
Division/Class\_\_\_\_\_

# Bonneville County Fair 2019

# Quilt Show

**Aug. 5th - 8th**  
**Monday - Thursday**  
**Open 9 A.M. - 9 P.M.**

At the **NEW** Bonneville County Fairgrounds  
**EDUCATION HALL**  
 immediately south of Sandy Downs



## Entries Open to all quilters

Entries must be received at the new Bonneville County Extension office (7475 S 15th E, I.F.) between 9 A.M.- 5 P.M. on Wednesday, July 31st, 2019.

- **All** quilts will be displayed Aug. 5-8 in the Education Hall. Quilts will be released for pickup on Friday, August 9th at the new Bonneville County Extension Office, from noon until 5 P.M. Premiums will be available at that time.
- Entries must be finished and complete.
- Art Quilts must be the original design of the quilt maker.
- If you do not want your quilt to be judged, check the 'For display only' box.
- Items to be judged must be the work of the exhibitors. All persons who worked on the quilt must be credited.

## To Enter

1. Fill out an entry form for each quilt entered. Write something interesting about the quilt on the back of this form.
2. Pay your entry fee of \$5 for the first quilt entered and \$1 for each additional quilt.
3. Bring your completed entry form for each quilt entered.

## Classes

**Large: bed-sized Small: less than bed-sized**

1. Pieced Large
2. Pieced Small
3. Appliquéd Large
4. Appliquéd Small
5. Other techniques
6. Junior
7. Art

Information or Assistance  
 Sandra Brow  
 208 524-6230

**Premiums** 1st: \$10, ribbon 2nd: \$8, ribbon 3rd: \$6, ribbon **Best Machine Quilting:** ribbon  
**Best Hand Quilting:** ribbon **Honorable Mention:** Ribbon **People's Choice:** \$25, ribbon

## BONNEVILLE COUNTY FAIR - 2019 QUILT ENTRY FORM

NAME: \_\_\_\_\_

ADDRESS: \_\_\_\_\_

PHONE #: \_\_\_\_\_ CLASS #: \_\_\_\_\_

BRIEF DESCRIPTION OF QUILT for identification:

For display only ☐

Please use the back to write something interesting about this quilt.

# Bonneville County Fair 2019

Open Class Contest -- Amateur Only

Child and Adult Baking

## Sugar Cookies

For this contest, an amateur is defined as one who does not and has never earned any substantial part of income from baking, or has not had extensive professional training or experience, or has never been considered a professional for any period of time.

For this contest, **Child** is considered from the age of 8-16, and **Adult** is any friend or family member over the age of 21 who is working with the **Child**.

**ENTRIES:** Must be made Monday, August 5, 2019 from: 10 am -1 pm at the Bonneville County Extension office, 7475 S 15th E. No entries will be accepted after this time.

**Conditions:** All Cookie exhibits (6-12 cookies) must be placed on white paper plates and inserted into Zip Lock bags. The Recipe must accompany the entry.

**Judging Criteria:** Cookies can be any Sugar Cookie recipe, they may be decorated if so desired. Judges are looking for general appearance, texture, uniformity, and flavor (taste & smell).



Fill out the form below for each Child and Adult Entry.  
One entry per child,

**ENTRY FEE:**

\$5.00 per each entry.

**PREMIUMS:**

**FIRST PLACE: \$100.00**

**SECOND PLACE: \$50.00**

Entries will be ribboned and on display to the public at the Exhibit Building from August 5-8 and will be released on August 9, 2019 from 9 am to 1 pm from the Bonneville County Extension Office.

Chair: Debbie Clements, Marla Meyer  
and Kelly Mullinaux

### Bonneville County Fair 2019 Child/Adult Sugar Cookie Entry Form

Adult Name: \_\_\_\_\_

Child Name: \_\_\_\_\_

Phone #: \_\_\_\_\_

Address: \_\_\_\_\_



# Bonneville County Open Class Pee Wee Parade

Bonneville County Fair  
7475 So. 15th E., Idaho Falls 208-529-1390  
**Thursday August 8, 2019 at 11 AM**  
**At the Melaleuca 4-H Events Center**  
Participation Ribbons will be awarded

- Pee Wee Parade is for any child from the ages of 5 years to 7 years old as of January 1, 2019
- The child may display any approved animal at the parade
- Return Entry forms to the Bonneville county Extension office by 4:00 pm Tuesday August 6, 2019

Hope To See You At The Fair!!

Child's Name \_\_\_\_\_ Age \_\_\_\_\_

Animal Species and Name \_\_\_\_\_

Child's Name \_\_\_\_\_ Age \_\_\_\_\_

Animal Species and Name \_\_\_\_\_

Child's Name \_\_\_\_\_ Age \_\_\_\_\_

Animal Species and Name \_\_\_\_\_

