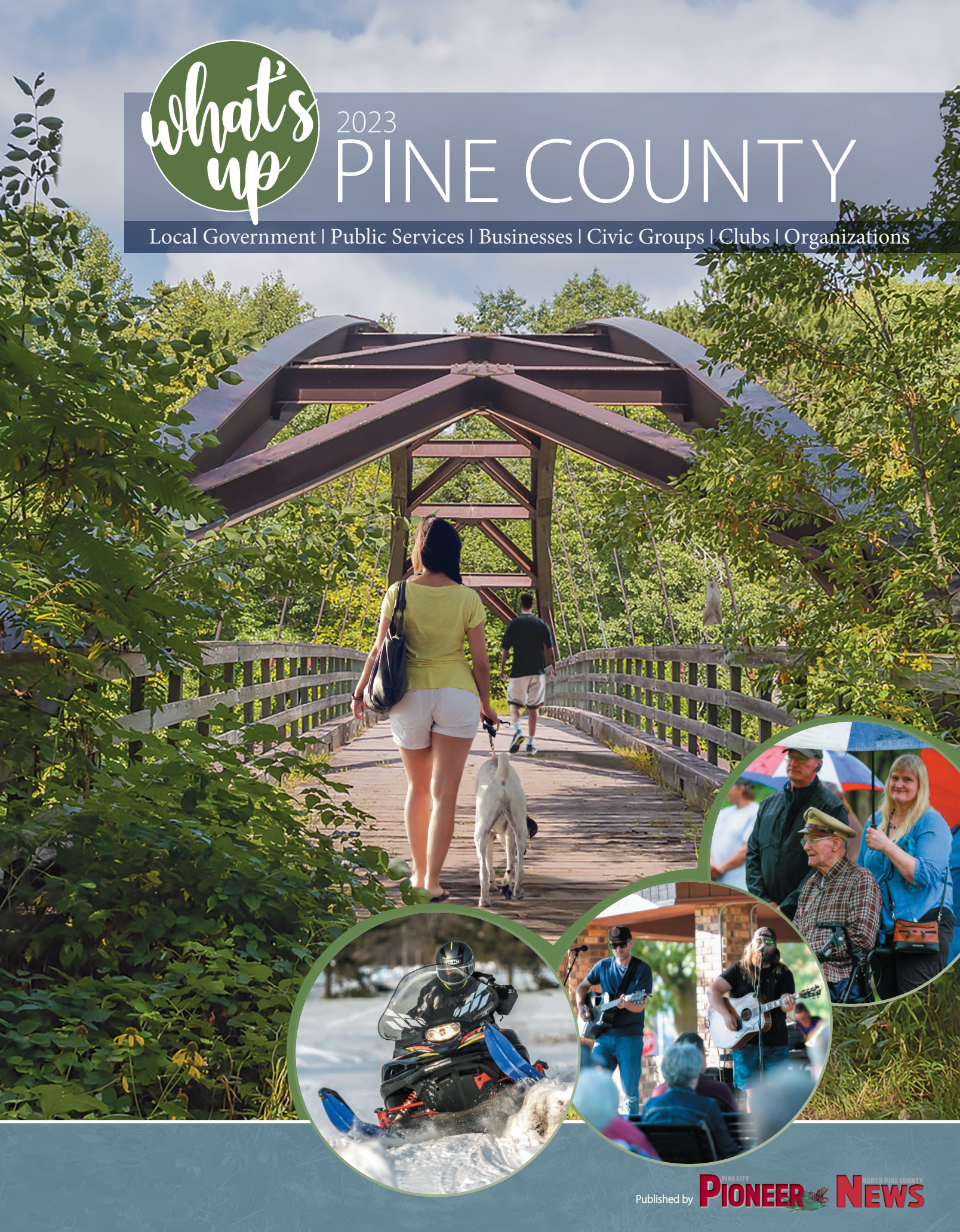




2023

PINE COUNTY

Local Government | Public Services | Businesses | Civic Groups | Clubs | Organizations



FIND YOUR
FORTUNE

ST. CROIX CASINOS

TURTLE LAKE • DANBURY • HERTEL

02

I did!

Bet on FUN at St. Croix Casinos!
Try your luck on Slots, Blackjack,
Poker, Craps, Roulette and now
offering **SPORTS BETTING!**

Visit GoPlayWin.com for more information.

No table games offered at our Hertel location.

One casino, three locations! Visit us TODAY! | TURTLE LAKE CASINO 1.800.846.8946 | DANBURY CASINO 1.800.238.8946 | HERTEL CASINO 715.349.5658

CITY OF SANDSTONE MINNESOTA



THRIVING COMMUNITY

RESTAURANTS AND
ENTERTAINMENT

INDUSTRIAL PARK

HOUSING
DEVELOPMENT
OPPORTUNITIES

PROUD FAMILY
OWNED AND
OPERATED
BUSINESSES

VISIBLE SERVICE
ORGANIZATIONS

FAMILY FOCUS

PARKS AND
PLAYGROUNDS

SUMMER EVENTS
AT TRAIN PARK

QUARRY DAYS
FESTIVAL

ACTIVE
NEIGHBORHOOD
WATCH

OUTDOOR ADVENTURES

WHITEWATER
RAFTING AND
KAYAKING

ROCK/ICE CLIMBING
CAMPING AND HIKING

AND
ALBI!



Sandstone City Hall
119 4th St
Sandstone, MN 55072
(320) 245-5241

www.sandstone.govoffice.com



City of Sandstone, MN

03

Welcome TO PINE CITY



Carl Pederson,
Mayor, City of Pine City

I grew up on a dairy farm, in a small town in southeast Minnesota. Over the past 46 years, my family and I have lived in several states across our great country and experienced many different lifestyles, from metropolitan to rural. Given these experiences, it is my firm opinion that the best quality of life can be found in a small town. For this reason, Pine City became our home in 1997. Life in Pine City offers many bonuses, such as the abundant natural resources for all to enjoy, free of charge. Specifically, it is the home of two beautiful lakes, Cross Lake and Pokegama Lake, which total almost 3,000 acres.

These lakes are connected by a 7 mile stretch of the Snake River, which flows east to the St. Croix and then onto the mighty Mississippi River. Simply taking a slow river ride in the spring, summer or fall is a breathtaking experience - and fishing along the way is a bonus. Another bonus is that Pine City sits on the I-35 corridor and is located an equal distance from four of the largest metro communities in Minnesota, all of which are just over an hour away. This is what makes Pine City's motto "**North. Nice and close,**" so fitting!

Pine City has excellent restaurants throughout our busy business district, and many shops and businesses in our historic downtown. The Pine City Chamber of Commerce is very active with over 200 members. Each year, along with other community non-profit organizations, the Chamber plans a very active program schedule for all to take in and enjoy.

Pine City has also experienced robust housing development year over year for the past eight years. This development activity includes a mixture of over 200 plus living units of varied single-family and multi-family residences. Opening in the spring of 2023 is Timber Pines

Senior Living. This development is comprised of 103 living units with a mix of Independent, Assisted Living and Memory Care. Additionally, there are a number of other multi-unit properties completed or nearing completion, which include Hilltop Cottages with 39 units, 12 units in the 2nd St and 3rd Ave. apartments, and 25 more units in the Village Apartments, which is under construction and set to open in 2023 in downtown Pine City.

Pine City is clearly moving forward on a path of residential and commercial growth. Other markers include the city investing over \$10 million dollars in street repair and reconstruction since 2015, with additional work planned for 2024 and beyond. City leaders have made investment of tens of thousands of dollars in city parks, with the same planned for years ahead. Pine Technical and Community College recently completed a million-dollar renovation and are now aiming at a major expansion to handle the booming enrollment in their trades programs. The Pine City School District is making plans for the future educational space of its grade school, and the Pine City EDA recently acquired 40-plus acres of contiguous land just north of the current technology park to open the way for new industries.

Simply said, Pine City is a historic, thriving and welcoming community. Come and experience it with us!

Carl Pederson, Mayor, City of Pine City

EDITOR:

Traci LeBrun
editor@pinecitymn.com

PUBLIC NOTICES:

publicnotices@pinecitymn.com

PUBLISHER:

Jeff Andres
jeff@northstarmedia.net

ADVERTISING MANAGER:

Annette Krist
akrist@moraminn.com

COMPOSITION:

comp@pinecitymn.com

ADVERTISING:

Bert LeBrun
Sales Representative
marketing@northstarmedia.net

EMPLOYMENT SPECIALIST/**CLASSIFIEDS:**

class@northstarmedia.net

The Pine County Information Guide

COPYRIGHT © 2023

The Pine City Information Guide is published annually by the Pine City Pioneer, 405 Second Ave. SE, Pine City, MN. (320) 629-6771. It is designed to provide residents, old and new, as well as visitors with basic and useful information about the Pine City area. www.pinecitymn.com

For up-to-date, year round information, the Pine City Pioneer (USPS 433-160) is published weekly for \$44 per year by the Pine City Pioneer, Inc. Second class postage paid at Pine City, MN. Outside Pine County add \$10 yearly to subscription.

320-629-6771 • Fax: 320-629-6772 • www.pinecitymn.com

Facebook: PineCityPioneerNewspaper

IF YOU HAVE CHANGES ABOUT YOUR INFORMATION, PLEASE CALL 320-629-6771

05



Cover Photo: Brett Whaley. In Chengwatana State Forest.

WHAT'S INSIDE

Welcome to the 2023 Pine County Information Guide produced by NorthStar Media. Inside, you will find sources to help navigate throughout Pine County and its towns.

HIGHLIGHTS

Welcome to Pine City.	4
Advertisers Index.	8
City and County Maps	10
Snapshot of Pine County	14
Pine County Government	15

COMMUNITY

Pine City Government	18
What's Up in Pine City	24
Pine City Arts Opportunitites.	28
Pine City Arts Counsel Organizations	28
New Resident Resources.	30
Connect with the Community	31
Area Recreation.	32
Pine County Fair	34
Snapshot of Sandstone.	64
What's up in Sandstone	65
Sandstone Arts Opportunitites.	66
Snapshot of Hinckley.	70
What's Up in Hinckley	71
Hinckley Arts Opportunitites.	72

EDUCATION

Pine City Education	39
Sandstone Education.	67
Hinckley Education	73

CHURCHES

Pine City Area Churches.	54
Sandstone Churches	68
Hinckley Churches	74

HISTORY

Pine City History	60
Sandstone History	68
Hinckley History	74



MEDICAL

What's Up at Welia 46

Local and Regional Healthcare 49

What's Up at Essentia 69

EVENTS AND ENTERTAINMENT

Pine City Calendar of Events 2023 35

Pine County Places to visit
and things to do 75

CHAMBER OF COMMERCE

Pine City Area Chamber of Commerce 76

Sandstone Chamber of Commerce 80

Hinckley Chamber of Commerce 81



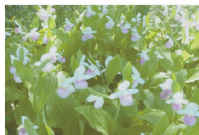
ADVERTISERS INDEX

Ausmus.63	Maytag22
A&W	86	Methven Funeral Homes52
American Legion PC22	MN Goose Garden	9
Arrowhead Transit36	Next Home Realty (Sturgeon Lake)57
Beaudry Oil62	North Pine County News63
Beaver Meadow	9	Northern Pines52
Bogey's on Main.27	Pine City Arts Council29
Cabak Law57	Pine City Chamber58
Campbell Construction62	Pine City Schools (Early Child Ed)37
Cavallin Ford63	Pine City Scrapbooking36
Chris' Food Center	86	Pine Eye Associates51
City of Pine City.16	Pine Technical.	38
City of Sandstone	3	Pizza Pub	84
Close At Title57	Sandstone Golf Course.27
Coldwell Banker Results.	88	Sausser's Hardware62
D & E Heating63	Selah Wellness Center	43
Dales Heating63	Snake River Fur Post36
Empower Recovery Services51	St Croix Casino (Danbury)	2
Essentia42	St. Paul Lutheran Church27
Federated Co-op62	Stearns Bank55
Firehouse Liquor	20	Therapeutic Services.27
GUMI Camp26	Three Twenty Brewing22
Harvest Christian School	38	United Country56
Healthy Human.51	Vision Pro Optical.	50
Heidelberger Rodeo/Café85	Voyageur Bottle Shop.21
Heritage Players.36	Welia	44
Hinckley Collision63	Woodlands Bank55
Jeff's Outdoor	9		
Kanabec Publications Commercial Printing	27, 55, 84		
Keith's Towing.62		
Lake Appeil	86		
Maverick's Saloon.87		

EARTH'S LARGEST LIVING SCULPTURE MINNESOTA GOOSE GARDEN



- Over 60 Sculptures
- Sculpture hunt Checkoff Sheets
- Over 500 Plantings
- Preserving Native Plants
- 5 Acres, One Mile of Paths
- Dedicated to Ojibwe Culture



MINNESOTAGOOSGARDEN.COM

3136 355th Ave. Sandstone, MN
320.390.2323 • Self-guided or Tours
Dawn to Dusk, 7 days a week
Memorial Weekend into October
Suggested donation:
\$5 for 13yrs old +



BEAVER MEADOW GARDEN CENTER



Stop in to see our **GREAT SELECTION**
from garden to home decor!



Mon.-Sat. 9am-6pm

Sun. 11am-5pm

320-384-6227



4201 Old Hwy 61 S., Hinckley

09

(320) 629-4990

Call For Your **FREE** Estimate!



(612) 221-1416

210 5th Ave SE., Pine City, MN

*Providing Quality Services
Since 1995*

LANDSCAPING



We take great pride in providing quality landscaping services. Our team is experienced in handling a variety of landscaping needs for residential and commercial properties.

LAWN MAINTENANCE



Our professionals have the knowledge and the tools to provide regularly scheduled lawn maintenance services such as lawn mowing, weed whipping, and/or clean-ups.

LAWN CARE



We are licensed with the Department of Agriculture to provide weed control & fertilizer services. We specialize in lawn care solutions to help you create a thicker, greener, weed-free lawn.

SNOW & ICE MAINTENANCE



Let our professionals keep your business open and/or residential property cleared of snow regardless of the winter conditions. We also offer snow hauling & sidewalk services.

SWEEPING

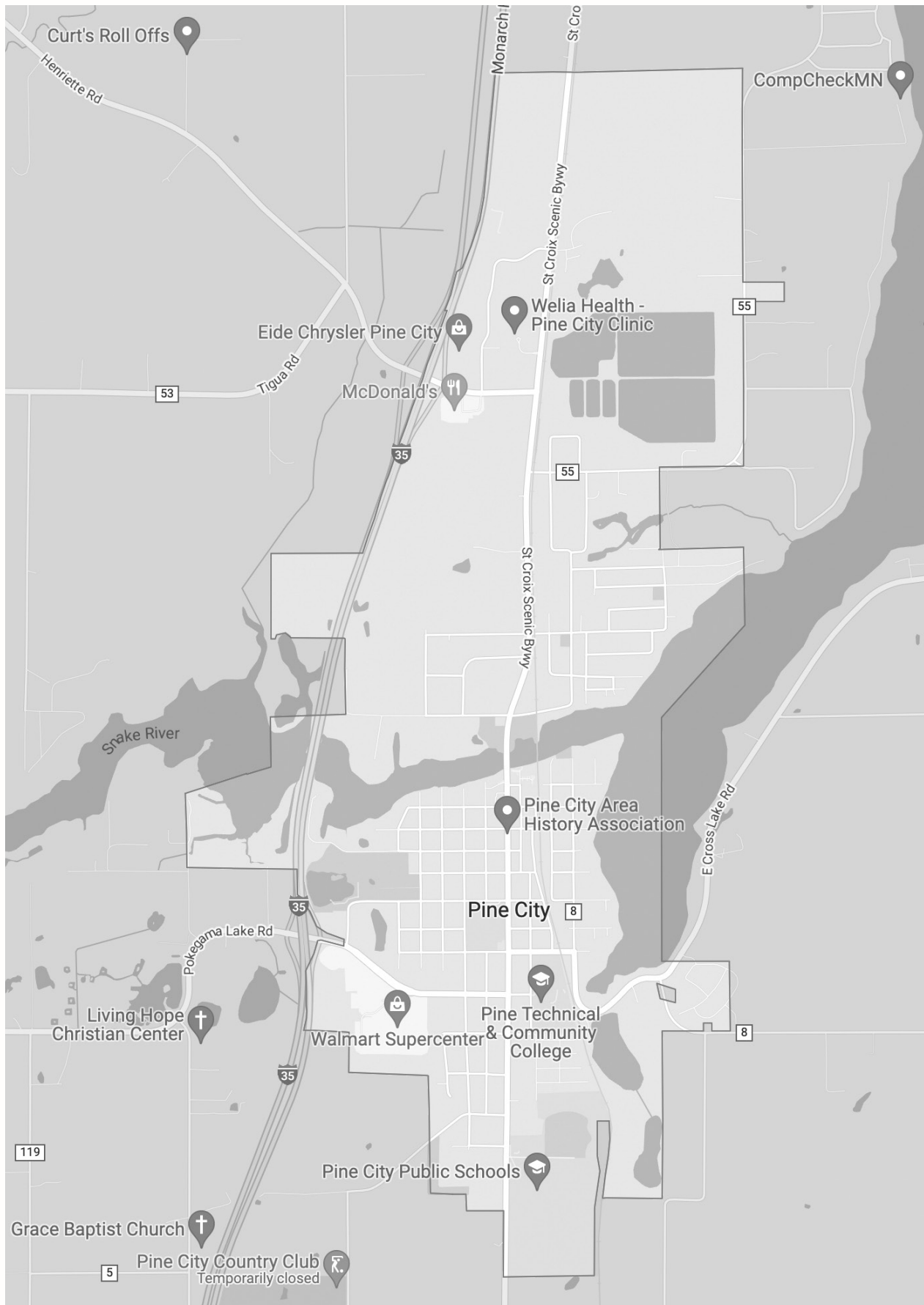


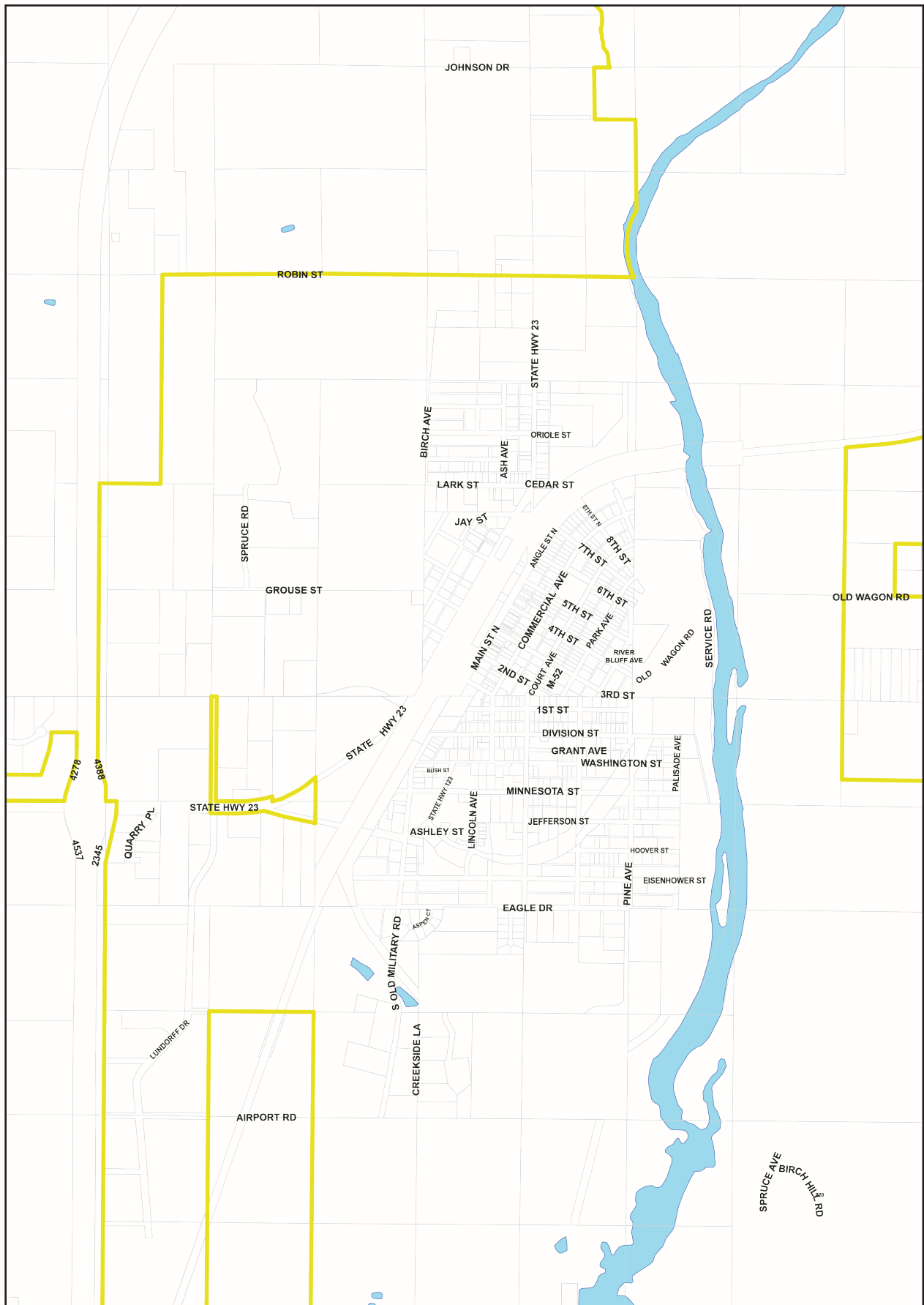
It has been proven that having a well-maintained parking lot and/or street shows pride in your business and community. Let us help you maintain a neat and clean appearance.

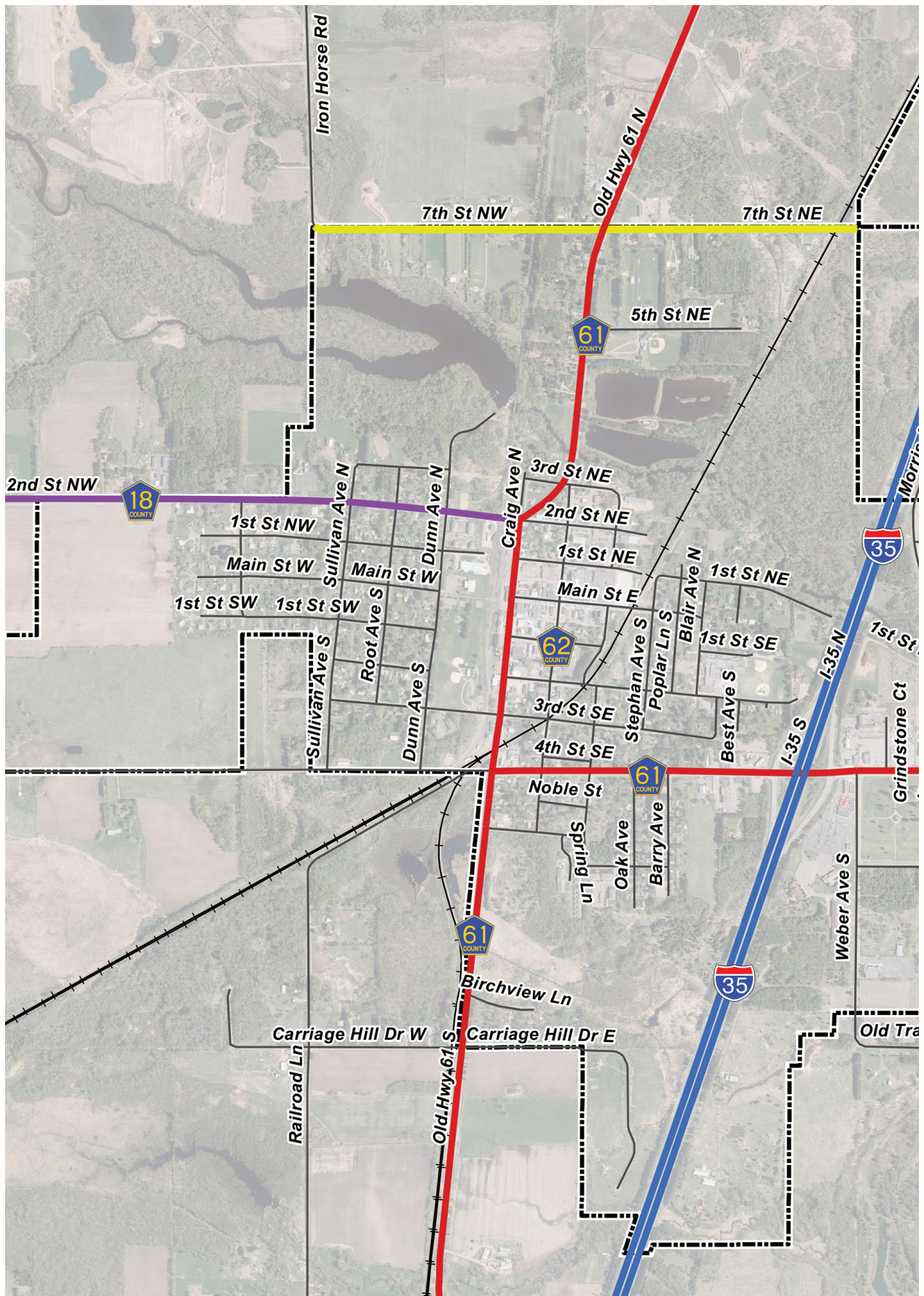
jeffsoutdoorservices.com • office@jeffsoutdoorservices.com











CITY OF HINCKLEY MN MAP COURTESY OF GOOGLE MAPS

Snapshots OF PINE COUNTY

COUNTY: Pine

POPULATION (2023 ESTIMATE): 28,615

STATE SENATE DISTRICT: 6

STATE HOUSE DISTRICT: 11B

DISTANCE FROM OTHER COMMUNITIES:

Pine City to Minneapolis/St. Paul: 60 miles

Pine City to St. Cloud: 75 miles

Pine City to Duluth: 89 miles

Hinckley to Minneapolis/St. Paul: 81 miles

Hinckley to St. Cloud: 71 miles

Hinckley to Duluth: 75 miles

Sandstone to Minneapolis/St. Paul: 90 miles

Sandstone to St. Cloud: 80 miles

Sandstone to Duluth: 75 miles

TRANSPORTATION: I-35, State Highways 23, 61, 123, 107, 70, 48, 18

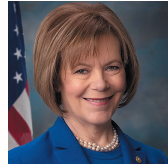
AIRPORT: Fields of Dreams Airport, Hinckley

CLIMATE: Pine County gets 31 inches of rain, on average, per year. It averages 50 inches of snow per year. There are 186 sunny days per year. Pine County gets some kind of precipitation, on average, 110 days per year. Precipitation is rain, snow, sleet, or hail that falls to the ground. The summer high is in July around 80 degrees. The winter low is in January below zero.





U.S. SENATE
Amy Klobuchar (DFL)



U.S. SENATE
Tina Smith (DFL)



REP U.S. HOUSE - 8
Pete Stauber (R)



PINE CTY STATE REP
MN SENATE - 11
Jason Rarick (R)



PINE CTY STATE REP
MN HOUSE 1 11B
Nathan Nelson (R)

COUNTY COMMISSIONERS OFFICE

Pine County is governed by a five-member county board of commissioners.

Each commissioner is elected from a district and serves a four-year term. The county board meets the first and third Tuesdays of each month.

COUNTY ATTORNEY'S OFFICE

The Pine County Attorney is elected to a four-year term. County Attorney Reese Frederickson leads the office of five Assistant County Attorneys, four Legal Assistants and a Victim Services Coordinator. The office is in the Pine County Courthouse in Pine City. The Pine County Attorney's Office serves as the chief prosecutor for offenses committed within Pine County. The Attorney's Office also serves as legal counsel for the Pine County Board of Commissioners.

COUNTY SHERIFF'S OFFICE

The Pine County Sheriff is elected to a four-year term. Sheriff Jeff Nelson leads the office of nearly 100 employees including deputies, jail staff, records personnel, and dispatchers.

PINE COUNTY COURTHOUSE

635 Northridge Drive NW
Pine City MN 55063
(800) 450-7463
www.co.pine.mn.us

PINE GOVERNMENT CENTER

1602 Hwy 23 North
Sandstone, MN 55072
(800) 450-7463
www.co.pine.mn.us

OTHER DEPARTMENTS/SERVICES:

Administrator 320-591-1620
Assessor 320-591-1632
Attorney 320-591-1560
Auditor/Treasurer 320-591-1670
Extension, Univ. of Minnesota 320-591-1650
Health and Human Services 320-591-1602
Highway/Public Works 320-216-4200
Human Resources 320-591-1620
Jail 320-629-8400
Planning & Zoning 320-216-4220
Probation 320-591-1550
Sheriff 320-629-8380
Veterans Services 320-216-4250

DISTRICT 1 **COMMISSIONER**

Steve Hallan
612-390-6169

DISTRICT 2 **COMMISSIONER**

Josh Mohr
320-591-0385

DISTRICT 3 **COMMISSIONER**

Terry Lovgren
320-591-0682

DISTRICT 4 **COMMISSIONER**

J.J. Waldhalm
320-438-0211

DISTRICT 5 **COMMISSIONER**

Matt Ludwig
320-264-3633



Pine City

North. Nice and close.

Experience and explore all that we have to offer!
Pine City has diverse social activities, local shopping & dining experiences, land for development, several recreational activities and abundant natural resources.



FUTURE HOME OF
TIMBER
PINES
SENIOR LIVING COMMUNITY



NEW HOUSING PROJECTS

- > Affordable cottages and apartments
- > Senior living facilities
- > Lots available for single family developments

COMMERCIAL PROPERTY

- > DEED-certified Shovel Ready Technology Park
- > Existing sites for retail and commercial development

LOCAL DINING & SHOPPING

- > 17 locally owned restaurants
- > A thriving downtown area

PARK IMPROVEMENTS

- > Free Wi-Fi in Robinson Park
- > New building at Hilltop Recreation Area
- > Outdoor movie screen
- > Free Little Library locations
- > Fawn Meadows Park with Bird Watching Platform
- > 5th Street Docks allow access to downtown for boaters
- > Fishing piers at Challeen Park and West Side Park
- > Pop-up Park Events



City Hall • 315 Main St S • Pine City MN 55063 • pinecity.gov.com • 320-629-2575

NONDISCRIMINATION STATEMENT: In accordance with Federal law and U.S. Department of Agriculture policy, this institution is prohibited from discriminating on the basis of race, color, national origin, age, disability, religion, sex, familial status, sexual orientation, and reprisal.

What's up



GOVERNMENT

PINE CITY GOVERNMENT

Situated on the I-35 corridor between the Twin Cities and Duluth, Pine City is a progressive community with a growing population. Over 3,100 residents live within the city limits and more than 10,000 reside in the adjacent townships. The combination of full-time residents and recreational residents makes the Pine City area a busy and diverse community.



18

CITY HALL is conveniently located in the downtown business district at 315 Main Street. All city services operate out of this building and are staffed weekdays from 8:00am - 4:30pm.

As a statutory city, Pine City residents are represented by the Mayor and four council members. City council meetings are held on the first Wednesday and last Thursday of each month. The City also has several committees that are composed of council members and city residents including: Planning Commission, Economic Development Authority, Housing & Redevelopment Authority, Parks & Recreation, Public Works, Liquor, Ordinance Review and Library Board. These committees serve in an advisory capacity to the council and are one of the most effective ways for citizens to influence City policies and activities.

THE PINE CITY FIRE HALL, located at 400 5th Street SE, houses the local volunteer fire department and equipment owned by the City of Pine City.

THE PINE CITY PUBLIC LIBRARY, located at 300 5th Street SE, is a branch of the East Central Regional Library System. Library services are available six days a week including material check-out and computer access. The library offers computers with internet access, a fax machine, a copier, free public wi-fi, and a microfilm reader-printer for public use. There is also a used bookroom that houses books on all topics and for all ages with books priced at .25 cents - \$1.00. This city building also has a small community room space that is available for rent by community members. For more information, contact the Pine City Library at (320) 629-6403 or visit the library website at www.ecrlib.org.

MAYOR
Carl Pederson
(763) 923-4288

COUNCIL MEMBER
David Hill
(320) 267-6025

COUNCIL MEMBER
Steve Ovick
(320) 629-2069

COUNCIL MEMBER
Gina Pettie
(320) 390-0523

COUNCIL MEMBER
Kyle Palmer
(651) 431-1730

CITY OF PINE CITY

315 Main St S, Suite 100
Pine City MN 55063
Main: (320) 629-2575
Fax: (320) 629-6081
Website: pinecitygov.com
Hours: Monday - Friday
8:00 am - 4:30 pm



CITY STAFF

Scott Hildebrand, City Administrator
(320) 629-2575

Billi Larson, Deputy Clerk
(320) 629-2575

Mike Gainor, Community Development
Director (320) 315-4885

Maury Montbriand, Public Works Director
(612) 390-4707

Brock Bloomquist, Parks & Public Buildings
Director (320) 438-1014

Lara Smetana, Liquor Store Manager
(320) 629-2020

Tom Miller, Fire Chief
(320) 629-2575

Andy Shreder, Building Official
(763) 291-3704

19

Do I need a Burning Permit?



A burning permit grants an individual the right to burn small amounts of dry leaves, plant clippings, brush, and clean, untreated, unpainted wood as long as the weather conditions do not pose a fire hazard.

Burning permits are required for non-recreation (three feet or more in diameter) fires unless there are three inches of continuous snow cover surrounding the fire area. In this instance, no permit is needed.



Permits can be obtained online for a \$5.00 fee. These are valid for the calendar year in which they are purchased.

PURCHASE ONLINE HERE: WWW.DNR.STATE.MN.US/BURNINGPERMITS

Permits can also be obtained at City Hall, any DNR Forestry office, or a local fire warden in your township.

Firehouse

LIQUOR STORE BAR

LOCATED AT EXIT 183 IN HINCKLEY!
324 FIRE MONUMENT ROAD
(320) 384-6213

FIREHOUSE BAR

OPEN TUES-THURS 3-11PM • FRI-SAT 11AM-1AM
SUN 11AM-6PM (SEASONAL HOURS MAY APPLY)

SOCIAL HOUR SPECIALS!

(Wed-Fri 11am-2pm & Mon-Thurs 7pm-10pm)

MONTHLY DRINK SPECIALS!

(\$2.50/16oz. can/tap beer/cocktail)

TUES: all day- free pool; WED: 6:30 pm- bingo; THURS: 8pm- karaoke; FRI: 5:30pm-
meat raffle; SAT: 6-9pm- ladies night; SUN: all day- loaded bloodys & mimosas

FIREHOUSE LIQUOR

OPEN MON-SAT 9AM-10PM • SUN 11AM-6PM

SENIOR DAY TUESDAY

10% OFF NON-SALE ITEMS!

WINE WEDNESDAY

10% OFF NON-SALE WINE ITEMS!

VETERANS DISCOUNT EVERYDAY



Voyageur Bottle Shop

Convenient Downtown Location

LIQUOR • BEER • WINE

Open Mon. - Thurs. 9am - 9pm
Fri. & Sat 9am - 10pm • Sun. 11am - 6pm

More than just your Hometown Liquor Store...

In 2022, \$125,000 was transferred to the
City General Fund to provide funding for the
Pine City Fire Department &
Hilltop Recreation Area redevelopment project



205 Main St S. • Pine City MN 55063 • 320.629.2020



Follow us on Facebook at www.facebook.com/voyageurbottleshop

THREE TWENTY

BREWING CO.

STAY FOR A PINT OR GRAB A BEER TO GO!

135 5TH ST SE, PINE CITY
THREETWENTYBREWING.COM
FACEBOOK.COM/THREETWENTYBREWING



Pine City American Legion Post 51

525 Main St N, Pine City
(320) 629-2021

Maytag LAUNDRY

Open Every Day
6am to 10pm

620 Johnson Ave SW, Pine City
815 Hwy 65 S, Mora

www.maytagcoinlaundry.com



Super Large Capacity
Washers & Dryers



Safe, Clean, Well Lit Atmosphere
with Security Cameras



Accepts Credit Cards & Debit
Cards, With ATMs



Television while you wait



Snack, Soda and Laundry
Supply Vending Machines



Convenient Hours



Front Door & Handicap
Accessible Parking



Air Conditioning



Large Folding Tables for Sheets,
Bedding, and Other Large Laundry Items

What's up



COMMUNITY



What's up

IN PINE CITY

Pine City is a growing and prosperous community. Pine City's citizens are hardworking and have a great volunteer spirit and the city services are outstanding. As part of the community the Pine City Area Chamber of Commerce is available to provide general information about Pine City, business-related amenities and events in the area throughout the year.

Pine City is an excellent place to enjoy Minnesota. It is a woodsy getaway just north of the Minneapolis-St. Paul metropolitan statistical area. Nestled near the forests on the banks of the meandering Snake River and the 938-acre Cross Lake, Pine City is a recreational haven appealing to virtually all types of outdoor enthusiasts. Water lovers will also find activities on the 1,536-acre Pokegama Lake to the west or the St. Croix National Scenic Riverway to the east.



Area residents and visitors also enjoy hiking, biking, camping, cross country skiing, four-wheeling, snowmobiling and other outdoor activities because of the nearness of the Chengwatana State Forest and the St. Croix State Park.

The city of Pine City's mission is to serve the Pine City community in a friendly, efficient manner while promoting growth, now and in the future. We will provide city services with expertise, dedication, compassion and respect through a commitment to unity and teamwork.

If I were to put a label on what's happened in Pine City over the last year or two, I would call it "Progress in Pine City." People have invested in Pine City, and it shows.

Being located where we are, halfway between the Twin Cities and Duluth on I-35, makes Pine City an ideal place to live for commuters. One can travel to the north metro in just under an hour and to Duluth in less than an hour and a half.

This has likely contributed to the boom in housing and vacation homes being built on our two lakes, Cross and Pokegama, which are connected by the Snake River. Many have chosen a rural or lake lifestyle over living in the metro area.

And the business community, particularly the restaurant industry, has answered back to the housing boom. We now have several options for evening dining, where just two years ago, there was much less. Everything from bar & grill, pizza, BBQ, Mexican, Chinese, Thai, and fast food – we have it covered in Pine City.

Our downtown is thriving, unlike so many downtowns across the country which have become ghost towns altogether. On any given weekend evening, cars line the streets of the downtown area near Robinson Park where restaurants and nightlife activity can be found.

And if you are a boater, you may have enjoyed what some have called our "Redneck Riviera" in the summer months. Pontoons are a favorite and one can boat from the north end of Cross Lake into the City, stop at one of the public docks, walk to a restaurant or brewery, then boat on the Snake River and enjoy one of the two restaurants on Pokegama Lake. Pine City is truly a boater's dream!

We have a wonderful community college here in Pine Technical & Community College which offers a wide variety of programs and is accredited by the Higher Learning Commission. Our public schools are equipped with quality teachers and staff who offer courses and activities that will engage children and equip them well for college. We have had many success stories come from Pine City High School alumni!

Besides all the amenities that Pine City has to offer, with shopping, salons, churches, senior housing and more that can be added to the list, the people here are truly one of a kind. "Pine City nice" is an accurate description of the kind of hospitality that is shown to strangers and locals alike.

If you haven't spent time in Pine City, put it on your to do list – it'll be a trip worth your time!

*Traci LeBrun Editor,
Pine City Pioneer*



Seeking additional
professional counselors
for Veterans in need.
Please call the
number below.

MINNESOTA GUMI CAMP USA

GUMI stands for **G**lad **U** Made **I**t

OFFERING VETERAN SERVICES

- Providing transportation for Veterans unable to drive themselves to VA appointments, shopping, etc.
- Placing companion dogs with Veterans in need of support
- Offering peer-to-peer support groups on a weekly basis

MN GUMI CAMP USA
247 5th Street SE
Pine City, MN 55063

Office Hours – Mon-Fri
10:00am - 2:00pm
(320) 390-2018

Emergency phone – available 24/7: (417) 559-3892
PLEASE CALL ANY TIME!

Much more info at gumicampusa.com

UPCOMING 2023

SUMMER GOSPEL NIGHTS CONCERTS

JUNE 4 THE EVERSTROMS BAND
JUNE 11 CRAIG DAHL & THE NEIGHBERZ BAND
JUNE 18 GARY & DAWN TIMBS
JUNE 25 AARON ECKMAN

JULY 2 JENNI THYNG
JULY 9 KENT DUDLEY & BENDED KNEE BAND
JULY 16 MN ADULT/TEEN CHALLENGE CHOIR --
JULY 23 THE ROLLER FAMILY BLUEGRASS BAND
JULY 30 NORTHERN LIGHTS ~ REVISITED

AUGUST 6 THE KLASSEN FAMILY BAND
AUGUST 13 THE HOLY HOOTENANER'S
AUGUST 20 THE HIGHVIEW BLUEGRASS BAND
AUGUST 27 KENNY KRONA

COFFEE
SERVED
AFTER
CONCERT

ALL CONCERTS FREE
FREEWILL OFFERING TAKEN

ALL CONCERTS SUNDAY NIGHTS
ALL CONCERTS START 6:30 PM

St. Paul Lutheran church,
Hinckley, MN

405 2ND ST. NW
west side of Hinckley on Hwy 18

27

QUALITY COLOR PRINTING

GET NOTICED
WITH QUALITY
PRINT MATERIALS
THAT SHOW
YOUR TRUE COLORS

Kamabee Publications inc. Call for a Quote Today! 320-679-2661
 printing@moraminn.com/www.moraminn.com/printing



343 Lark Street
Sandstone, MN 55072
(320) 245-0471
www.sandstonegolf.com
SAGC@scicable.com



**THERAPEUTIC
SERVICES AGENCY, INC.**
Hope Realized

**Mental Health and
Personal Counseling**

For more information, visit
www.hoperealized.com

For persons struggling with relationships, transitions in life, parenting, health concerns, grief and loss, mental health and other personal problems, mental health therapists provide care, compassion, and professional service in private comfortable offices to children, teens, adults, couples, and families!

Call for an appointment at 320-629-7600

- Close-to-home convenience
- Topnotch professional and confidential service
- Day, evening appointments available
- Insurance, MA, PMAP and Self-pay arrangements accepted
- Kid-friendly and pleasant meeting areas for adults
- Comfortable, professional office locations in Pine City, Cambridge, Coon Rapids and Lindstrom



Burgers, Pizzas, Apps

Dine-in, take out & off-sale

(320) 384-7855
104 Main St. E, Hinckley, MN

PINE CITY ARTS OPPORTUNITIES

Conveniently located midway between the Twin Cities and Duluth, the Pine City area is a hidden gem for those interested in the arts. You'll find a variety of opportunities to enjoy visual arts, music, dance, theater, and so much more. These volunteer-led organizations welcome new residents to join them at an upcoming event or reach out to get involved.

PINE CITY ARTS COUNSEL ORGANIZATIONS



PCAC The Pine City Arts Council has been serving the area for over 40 years and organizes one of the most beloved community activities - Art in the Park. Held every Friday evening from Memorial Day weekend through the end of July, the evening is a showcase of talented musicians sourced from throughout Minnesota. A different genre of music is featured each week and the evening concerts are free - just bring your own chair! Another great event created by this group is Art Fest, an opportunity for artisans of all mediums to gather in Robinson Park to display and sell their wares.

Follow this organization on Facebook @PineCityArtsCouncil for up-to-date information.



HERITAGE PLAYERS The Heritage Players provides a quality community theater experience for local actors to learn and explore the arts, while creating a quality performance for audiences of all ages to enjoy. In 2014 the community added a 790 seat auditorium facility at the Pine City High School. The state-of-the-art facility provides this group the opportunity to present large scale productions featuring actors from around the region. Residents and visitors can look for two productions annually, typically in March and July.

Visit www.pinecityheritageplayers.com for up-to-date information.



PINE CENTER FOR THE ARTS Now located in the heart of downtown Pine City, the Pine Center for the Arts provides a facility for both residents and travelers to enjoy the arts. A monthly gallery exhibit showcases both experienced and first-time artists to display and sell their work. Music lessons and art classes are also part of the Arts for Everyone mission for this organization.

Visit www.pinecenter.org for up-to-date information.



PINE CITY PUBLIC SCHOOL PROGRAMS The Community Arts aren't complete without noting the amazing programs available through the Pine City Public Schools. Music education begins at the elementary school for all grade levels, and expands at fifth grade to include the option to begin playing with the band program. In 2021, the elementary school added a new visual arts instructor to expand the arts opportunities for students. At the high school level, expanded options for choir, Pine City singers, band, jazz band and a wide array of arts classes allow for students to get in-school credits or extra-curricular options for being involved in the arts and music programs. Additionally, a high school theater program is offered as an activity option for all three seasons: Fall Musical, Winter One-Act, and Spring Play.

Visit www.isd578.org for up-to-date information.



ART IN THE PARK 2023

Robinson Park | Downtown Pine City | Music Begins at 6:30 PM

FREE Rides Available Call Arrowhead Transit 1-800-862-0175 option 6 | Rainsite: Pine Co Fairgrounds Event Center



5/26

**PINE CITY HIGH
SCHOOL JAZZ BAND**



6/2

**TIM HADLER
NASHVILLE COUNTRY**



6/9

**RUBBER SOUL
BEATLES TRIBUTE**



6/16

**ROXXY HALL BAND
ROCK 'N SOUL**



6/23

**WHITESIDE WALLS
ROCK & ROLL**



6/30

**TRANSIT AUTHORITY
CHICAGO TRIBUTE**



7/7

**MONROE CROSSING
BLUEGRASS**



7/21

**WHITE BEAR BIG BAND
SWING**



7/28

**THE PHONICS
CLASSIC ROCK/COUNTRY**



8/11

**CHRIS KROEZE
THE VOICE FINALIST**



8/18

**FREEWAY JAM
60S, 70S, 80S ROCK**



Follow us

@PineCityArtsCouncil



#ecrac
#artslegacy



This activity is made possible by the voters of Minnesota through a grant from the East Central Regional Arts Council thanks to a legislative appropriation from the Arts and Cultural Heritage Fund.

29

NEW RESIDENT RESOURCES

Moving into our community and looking for resources to make a smooth transition? Here is a quick guide for phone numbers for all of the key services you need to get settled in your new location. You can also contact the Pine City Area Chamber of Commerce at 320-322-4040 to request a “Welcome Packet” with brochures and coupons from local businesses to help you learn more about Pine City.



30

ELECTRIC UTILITY PROVIDER

EAST CENTRAL ENERGY

1-800-254-7944
www.eastcentralenergy.com

MINNESOTA POWER

1-800-228-4966
www.mnpower.com

NATURAL GAS PROVIDER

Minnesota Energy Resources
1-800-889-9508
www.minnesotaenergyresources.com

PROPANE PROVIDERS

Burnett Dairy Cooperative
715-689-2467
www.burnettdairy.com

FEDERATED PROPANE

1-800-671-9759
www.federatedcoops.compropane

LAKE GAS (HINCKLEY OFFICE)

320-384-7943
www.lakesgas.com

SANITATION & RECYCLING

WASTE MANAGEMENT

1-800-439-2171
www.wm.com

TALON SANITATION

320-629-1133

MATT'S SANITATION

320-384-7137

CURT'S ROLL-OFFS

320-629-5555

SOUTH PINE RECYCLING CENTER

320-591-1678
www.co.pine.mn.us

HINCKLEY TRANSFER STATION (LANDFILL)

320-384-6596

COMMUNICATIONS

MIDCO (CABLE TV, TELEPHONE & INTERNET)

1-800-888-1300
www.midco.com

CENTURYLINK (INTERNET, TELEPHONE & TV)

1-866-642-0444
www.centurylink.com

DIRECTV (INTERNET & TV)

1-888-777-2454
www.directv.com

DISH NETWORK (INTERNET & TV)

1-888-434-0112
www.dish.com

GENESIS WIRELESS (INTERNET)

320-396-2990
www.genesiswireless.com

YOU BET! NET

(INTERNET & TELEPHONE)

320-679-2082
www.youbetnet.com

VIASAT (INTERNET)

1-855-393-3302
www.viasat.com

STARWIRE TECHNOLOGIES (INTERNET)

1-877-679-4242
www.starwire.net

TRANSPORTATION SERVICES

ARROWHEAD TRANSIT

(PINE CITY DIAL-A-RIDE)

1-800-862-0175 op 6
www.arrowheadtransit.com

ATTABOYS' TAXI SERVICE

1-866-998-8294

LIFTS TRANSPORTATION

(MEDICAL TRANSPORT)

1-888-469-7433

CONNECT WITH THE COMMUNITY

ACTIVE DUTY & VETERAN SUPPORT SERVICES

AMERICAN LEGION POST 51
320-629-2021

BEYOND THE YELLOW RIBBON
320-629-7541
www.pinecitybyr.org

BLUE STAR MOMS
pinecitybluestarmoms@gmail.com

VETERANS OF FOREIGN WARS (VFW)
320-629-3198

VFW AUXILIARY
320-629-7084

ARTS, CULTURE & SPECIAL EVENTS

PINE CENTER FOR THE ARTS
www.pinecenter.org

**PINE CITY AREA
CHAMBER OF COMMERCE**
320-322-4040
www.pinecitychamber.com

PINE CITY ARTS COUNCIL
pinecityartscouncil@gmail.com

PINE CITY FARMERS' MARKET
320-322-4040
pinecityfarmersmarket@gmail.com

PINE CITY HERITAGE PLAYERS
www.pinecitycityheritageplayers.com

PINE COUNTY AGRICULTURAL SOCIETY
www.pinecountyfair.com

SNAKE RIVER FUR POST
320-629-6356
www.mnhs.org

ENVIRONMENTAL & HABITAT

CROSS LAKE & SNAKE RIVER ASSN.
www.crosslakeassociation.org

**EAST CENTRAL SPURS,
PHEASANTS FOREVER**
eastcentralspurs@gmail.com

**JIM JORDAN CHAPTER,
MN DEER HUNTERS ASSOCIATION**
www.mndeerhunters.com

POKEGAMA LAKE ASSOCIATION
www.pokegamelakeassociation.com

**SNAKE RIVER VALLEY
CONSERVATION CLUB**
mdmadison52@gmail.com

GARDENING

BUDS 'N BLOOMS GARDEN CLUB
blvideen@gmail.com

PINE COUNTY MASTER GARDENERS
320-591-1650
extension.umn.edu/local/pine

HISTORY

PINE CITY AREA HISTORY ASSOCIATION
www.pinecityhistory.com

PINE COUNTY GENEALOGICAL SOCIETY
www.pinecogen.org

**PINE COUNTY HISTORY MUSEUM
(ASKOV)**
320-838-1607
www.pinecountyhistoricalsociety.org

POLITICAL

PINE COUNTY REPUBLICANS
Charlene Gafkje 612-718-6476

PINE COUNTY DEMOCRATS
Oliver Dykstra oliver.dykstra@gmail.com

RECREATION

PINE CITY PARKS & RECREATION
Stacy O'Rourke 320-629-2575
pinecity.govoffice.com/parksrecreation

PINE CITY HORSESHOE LEAGUE
Eric Dehkes 320-429-4821

**HINCKLEY-PINE CITY FLAMES
SNOWMOBILE CLUB**
Norris Hamilton 320-515-0156
www.hpcflames.com

PINE CITY CIVIC CENTER ASSOCIATION
320-629-6995
www.pinecityciviccenter.weebly.com

SENIORS

PINE CITY SENIOR DINING SERVICES
320-629-3024

SERVICE

EAST CENTRAL MN PFLAG
www.ecmnpflag.org

HABITAT OF HUMANITY
763-689-0288
chabitat@ecenet.com

PINE AREA LIONS
PineAreaLionsPresident@gmail.com

PINE CITY LIONS
PineCityLionsClub@yahoo.com

SALVATION ARMY OF PINE COUNTY
218-829-1120

YOUTH

CUB SCOUT SERVICE GROUP
rc.hart@yahoo.co

GIRL SCOUT SERVICE GROUP
Jessica.Taylor@girlscoutsvr.org

PINE CITY/RUSH CITY YOUTH HOCKEY
www.pinecityyouthhockey.pucksystems.com

PINE COUNTY 4-H
320-591-1650
extension.umn.edu/local/pine

PINE CITY SUMMER REC
320-282-6378
pcsummerrec.weebly.com

WE'R' ABLE COMMUNITY ED
320-358-3616
www.scred.k12.mn.us

ORGANIZATION HIGHLIGHT

We'R'Able Community Education enables persons with disabilities to participate in lifelong learning through education and provides a variety of other activities. We'R'Able is for persons fourteen (14) or older, who are differently abled. The target population for the Program (We'R'Able) involves persons with physical and/or mental impairments. These impairments could significantly inhibit the individual's ability to do one or more of life's activities or the person is regarded as having a disability.

AREA RECREATION



32

POKEGAMA LAKE:

This is a 1,536-acre lake containing walleye, northern pike, largemouth bass, crappie, sunfish, catfish, sturgeon, perch and some muskie. Public access is on the south end of the lake off County Road 7.

SNAKE RIVER: Public access is from any of the landings for Cross and Pokegama Lakes. If you take the Snake River from the access east of Cross Lake, you can canoe (or tube) down to the St. Croix. Since the water level changes constantly, check with locals before attempting this trip. This trip can take from 2-6 hours depending on water levels.

CROSS LAKE: This is a 938-acre lake with an average depth of 16 feet. Cross Lake contains basically the same species of fish as Pokegama. There are two public accesses: North Pine City across from Voyageur Park at the Snake River Landing on Old Hwy. 61 at the bridge. East side of Cross Lake off County Road 9 by the dam.

CAMPING:

POKEGAMA LAKE RV PARK: Located four miles west of Pine City on County Road 11. RV pull-through sites are available, as well as a par 3 golf course, outdoor pool. For more information call: (320) 629-6552 or through their website at woischkes.com. <https://www.pokegama-lake-rv-and-golf.com>

SNAKE RIVER STATE CAMPGROUND: Located nine miles east of Pine City on County Road 8. The campground has 26 sites with parking, picnic table, fire ring and tent area. The campground also has water and outdoor toilets. For more information call (800) 766-8000.

CITY PARKS:

ROBINSON PARK: Located in the downtown area, Robinson Park offers lots of shade with picnic tables, gazebo, grills and playground equipment. In the summer, Robinson Park hosts musical groups and artists for “Art in the Park” on Friday evenings.

WEST SIDE PARK: This park, located near the freeway on 6th Avenue SW, has a public swimming beach with lifeguards and bathrooms. Also offered are picnic tables, grills, shelter, playground, horseshoes, basketball courts, a fishing pier and a skateboard park.

DRAGONS DEN: This playground is very large and unique and offers beautiful playground equipment. The playground is located south of the Pine City Elementary on the school grounds and is open daily to the public (not available to the public when school is in session).

VOYAGEUR PARK: A giant carved redwood voyageur statue resides at Voyageur Park, just north of downtown off Highway 361 near the Pine County Fairgrounds. The park offers picnic tables, grills, gazebo, walking paths and disc golf course and playground area.

CHALLEEN PARK: This park is on the south bank of the Snake River at the end of 3rd Street SE. There is a large fishing pier and picnic areas for your enjoyment, as well as a community garden for anyone wishing to participate.

There are several other neighborhood parks within the city. Please contact City Hall for more information, at (320) 629-2575.

GOLF

PINE CITY COUNTRY CLUB: This club offers a nine-hole course, driving range, and clubhouse and is open to the public. For more information, please call (320) 629-3848. Grill and bar along with banquet facilities are available as well. 10413 Golf Course Road SW.

SNOWMOBILING:

HINCKLEY-PINE CITY FLAMES SNOWMOBILE CLUB: This club grooms approximately 100 miles of snowmobile trails in the area. For more information, please call (320) 515-0156.

Trail maps are available at the Pine Area Chamber of Commerce office, the Pine County License Center, and local gas stations and businesses.

HUNTING

WINGS NORTH is located at 19379 Homestead Road. Pine City 320.629.4868 (HUNT) WINGS1@ECENET.COM. This hunting club has 19 different hunting areas, two trap houses, a clubhouse, bar and restaurant to serve a variety of needs. Members are also able to take advantage of the 10 station sporting clay course.

The diverse cover and relatively flat topography of the club allow tremendous variety and experiences for hunters of all skill levels. The hunting areas are large enough to accommodate groups to have plenty of room.

ADRENALINE ARCHERY AND BAIT SHOP 1300 Northridge Dr., Pine City 320-629-4992. Adrenaline Archery is open to the public with a variety of archery and fishing products available. Some of the services offered are leagues, an indoor range and an indoor simulator with archery servicing. A variety of fishing equipment, bait and tackle are also available.

PEACEFUL PINE FARM

Peaceful Pines Pumpkin Patch is a family focused place just a couple of miles from downtown Pine City. Located on the corners of Northern and Government Roads. You and your children can pick your own pumpkins and enjoy some family fun all at a reasonable price. Free admission and parking! Members of the Minnesota Grown network.

FAIRFIELD TREE FARM

“Cut your own” Christmas tree farm located in Rock Creek. Many different varieties of trees: Fraser, Balsam, Canaan, White and Blue Spruce, White Pine and Norway Pine. From 4-10 feet tall. Bring the whole family fun activities for the kids! Members of the Minnesota Grown network.

PINE CITY CIVIC CENTER

Located across from the high school and baseball fields the Pine City Civic Center offers various indoor open ice skating and open hockey opportunities for all ages throughout the winter season.

PINE COUNTY FAIR

The 2023 Pine County Fair is a go! To add to the fun at the event voted Best Outdoor Event in Pine County, there will be one more day of fun. The dates of the fair this year are August 2 to August 6. Come out and enjoy live entertainment, attractions and exhibits, food, rides and much more.

With restrictions changing daily, it is recommended you check the website, www.pinecountyfair.com or the Pine City Pioneer as the fair dates approach for the most up-to-date information on the fair schedule.

Grandstand events slated for this year include the Demolition Derby on Friday and Saturday night, the Truck Pull

on Wednesday night, and the Tractor Pull on Thursday night. All events start at 7 pm in the grandstand. Come to participate or watch the fun.

There will be plenty of live entertainment in the band shell this year for all to enjoy each night of the fair. As of press time, the schedule and bands were still being determined so please check the website.

What would a fair be without animals? The 4-H clubs will have their horses, pigs, sheep, cows, rabbits, goats, dogs and cats there to show. There are also many general projects on display in the 4-H building.

34



CALENDAR OF EVENTS 2023-24

2024

JUN.

- 2ND AND 3RD Three Twenty Brewery Special Event 5 to 8 pm
- 3RD Art in the Park – Tim Hadler 6:30 pm
- 3RD East Central Minnesota Pride 12 pm
- 9TH Art in the Park – Rubber Soul 6:30 pm
- 9TH Pine City Chamber of Commerce Golf Tournament
- 10TH Three Twenty Brewery Special Event 4 pm
- 16TH Art in the Park – Roxxy Hall Band 6:30 pm
- 21ST Pine Technical Community College Annual BBQ and Car Show
- 23RD Art in the Park – The White Sidewalls 6:30 pm
- 24TH Freedom Fest: Car Show, Live Music, & Fireworks 9 am
- 25TH Solid Rock in the Park 1 pm
- 30TH Art in the Park – Transit Authority 6:30 pm

JUL.

- 7TH Three Twenty Brewery Special Event 4pm
- 7TH Art in the Park – Monroe Crossing 6:30 pm
- 13TH – 16TH Pine City Heritage Players Community Theatre – “The Addams Family”
- 15TH Art Fest 9 am
- 21ST Three Twenty Brewery Special Event 5 pm
- 21ST Art in the Park – White Bear Big Band 6:30 pm
- 23RD History in This Spot – Celebrate 10 Years of Preserving Pine City History & the official Opening of a Pine City History Walk – 2:30 pm at the Pine City Public Library
- 28TH Art in the Park – The Phonics 6:30 pm
- 29TH Beyond the Yellow Ribbon Annual Bike Run

AUG.

- 1ST National Night Out
- 2ND – 6TH Pine County Fair 9 am
- 5TH Pine County Parade 4pm
- 5TH Pine County Fun Run
- 11TH Three Twenty Brewery Special Event 5pm
- 11TH Art in the Park – Chris Kroeze 6:30 pm
- 18TH Art in the Park – Freeway Jam 6:30 pm
- Czech Booya Festival at Sokol Camp

SEPT.

- 1ST Three Twenty Brewery Special Event 5 pm
- LABOR DAY WEEKEND
- Pine County PRCA Championship Rodeo
- Anderson's Rock Creek Relics Threshing and Sawing Show
- North West Co. Fur Post's Gathering “Festival of the Voyageur”

OCT.

- 21ST Three Twenty Brewery Special Event 12 pm

DEC.

- Holiday Madness and Lighted Parade

2024

JAN.

- Fur Post Winter Frolic

FEB.

- Pine Technical Community College Shooters' Association Annual Gun Show
- Fur Post Queen Charlotte's Ball

MAY.

- City-Wide Garage Sales
- Memorial Day Parade

35

MINNESOTA HISTORICAL SOCIETY

DISCOVER STORIES OF THE FUR TRADE



**SNAKE RIVER
FUR POST**

12551 VOYAGEUR LANE
PINE CITY, MN 55063
MNHS.INFO/PINE



Heritage Players

PINE CITY AREA
COMMUNITY THEATER

JOIN US!

Our mission is to enrich, educate and entertain our community by providing a superior theater experience, and we want you to be part of it!
Contact us to learn more:
heritageplayers@gmail.com

WWW.PINECITYHERITAGEPLAYERS.COM

The Pine City Scrapbooking Co.

and Scrapbooking in the Pines
Retreat Center

24 Beds / Large or Small Groups
Call for Reservations

**Your destination for
Scrapbooking &
Stamping**

**ONLINE REGISTRATION
AVAILABLE**

www.thepinecityscrapbookingco.com

Phone: **(320) 629-9960**

HOURS:
Tues. & Wed. CLOSED
Thurs.- Mon. 10-5



SKIP THE TRAFFIC! Hop on our bus today

Arrowhead Transit:

- Standard Schedules in most major communities!
- Dial-A-Ride pickup right at your curb!
- Safe, reliable transportation for anyone!

For more information visit our website

arrowheadtransit.com



Arrowhead Transit operates as a program of the AEOA (Virginia, MN). Arrowhead Transit busses are in compliance with the Americans with Disabilities Act of 1990 and are equipped with wheelchair lifts. For more information visit the TITLE VI tab on our website!

ARROWHEAD TRANSIT



Pine City Schools **COMMUNITY EDUCATION**

www.pccommunityeducation.weebly.com

Pine City Schools **EARLY CHILDHOOD FAMILY EDUCATION**

Storytime • Drop In & Play • Educational Classes

www.pcearlychildhood.weebly.com

Pine City Schools **Early Childhood Screening** (Ages 3 to kindergarten)

ALL children need to be screened before KINDERGARTEN
call 320-629-4030 for an appointment



- **Engineering, Manufacturing, and Technology**

Applied Engineering, Automotive, Automated Systems, Construction, Gunsmithing, Precision Machining, Welding

- **Business and Information Technology**

Business, Cyber Security, Management Information Systems, Networking

- **Education and Human Services**

American Sign Language, Early Childhood Development, Human Services Eligibility Worker

- **Health Sciences**

Emergency Medical Services, Nursing

- **Liberal Arts and Transfer**

Associate of Arts, Business Transfer Pathway, Psychology Transfer Pathway

SCAN HERE
to explore
the PTCC
programs



Pine Technical &
Community College
A MEMBER OF MINNESOTA STATE

900 Fourth Street SE, Pine City, MN 55063
320.629.5100 • MN Relay 711 • www.pine.edu



HARVEST CHRISTIAN SCHOOL

At Harvest Christian School, students will be Equipped for Life...

*Love God, Serve Community,
Learn for the Future*

Christian Education in East Central Minnesota Offering Preschool-12th Grade

Our Mission: Training and equipping young people to reach their full potential in life, in service, and in the world.

204 Lundorff Dr., Box 646, Sandstone, MN 55072

320-245-5330

hcsmn.org

harvestcs@scicable.com

What's up



EDUCATION

PINE CITY PUBLIC SCHOOLS

Pine City Public Schools' educational philosophy is based on a simple question: "What is best for students?" With the district's vision, "Preparing Our Students for the Future," the district works hard to evolve each year to better reflect its strong commitment to doing what is best for area young people.

The local school district is focused not only on learning, but also preparing students for life. The district provides opportunities for young people to pursue their individual talents and make wise choices that will help prepare them for a successful future. The district's primary mission is to give all learners an opportunity to reach their potential in an ever-changing world.

Approximately 1,625 students are enrolled in Pine City Public Schools in kindergarten through 12th grade. For more information on the district or to enroll a new student, visit their website at www.isd578.org.

The District Offices are located at the High School building at 1400 Main Street. Regular School board Meetings are held the second Monday of every month at 6:30 p.m.

in the District Office Board Room. School board members are elected to a four year term, with elections held in even years in November.

PINE CITY ELEMENTARY

700 6th Ave SW
Pine City MN 55063
320-629-4212

PINE CITY HIGH SCHOOL

1400 Main St S
Pine City MN 55063
320-629-4113
Laura Yehlik,
High School Principal
Dr. Cindy Stolp
Superintendent

ECFE/COMMUNITY EDUCATION

700 6th Ave SW
Pine City MN 5506
320-629-4030
Cindy Stolp, Director

PINE CITY ALTERNATIVE LEARNING CENTER

1225 Main St S
Pine City MN 55063
320-629-4040
Kari Hasz, Director

VISION CENTER

New Location 2021-2022
320-322-2201
Jocelyn Stephan, Vision
Program Coordinator



PRESCHOOL PROGRAMS

Pine City has a variety of options for preschool age programming, whether you are looking for weekly classes, in-home options, or daily care providers.

LAKES & PINES HEAD START

320-679-1800
www-lakesandpines-org

EARLY CHILDHOOD FAMILY EDUCATION

320-629-4030
www-isd578-org

PINE CHILDREN'S EARLY LEARNING CENTER

320-629-5147
900 4th St SE

ST- MARY'S EARLY LEARNING ACADEMY

320-629-3953
815 6th Ave SW

EARLY YEARS ACADEMY

320-322-5134
1687 Main St N

GROWING IN GRACE PRESCHOOL

320-629-3683
410 Main St SE

CHILDREN OF JOY PRESCHOOL

320-629-2985
825 Golf Ave SW

PINE CITY COMMUNITY EDUCATION

Pine City Community Education is a great resource for learning about a variety of programs for community members of all ages. Community Ed and ECCE work closely to host educational play events throughout the year for young students. Learn more about class opportunities like Driver Improvement Classes, Yoga, High School Trap Team, Elementary Choir and More. Visit their website at pccommunityeducation.weebly.com



PINE TECHNICAL & COMMUNITY COLLEGE

PTCC has served the region since 1965. Today's enrollment consists of more than 1,200 students. As a part of the Minnesota State Colleges and Universities system, the college offers programs in health sciences, business, industrial technology and general education. PTCC awards certificates, diplomas and associate degrees in accounting, American Sign Language, automotive technology, early childhood development, gunsmithing technology, health science, information technology, medical assistant, nursing, precision manufacturing, human services eligibility worker and more. The college also awards the Associate of Arts degree. As part of MNSCU, the PTCC associate degree will transfer to the system's four year universities.

For more information about PTCC visit their website at www.pine.edu or call 320-629-5100.

The Continuing Education/Customized Training department at PTCC is the regional provider of skill-based, short-term courses that are designed to meet individuals' needs for occupational licensing, legal requirements and new technology. The department also works closely with businesses and organizations to assist them in customized training for Industrial Technology, Information Technology and Health Education programs. For more information about Continuing Education or Customized Training classes, call 320-629-5176.

URGENT CARE-SANDSTONE

Monday-Friday

9:00am-7:00pm

Saturday & Sunday

8:00am-5:00pm

42

At Essentia Health, we understand that life gets busy and unpredictable. We also know that you and your family's sudden illness and injuries don't always happen during regular business hours.

That's why our Essentia Health Urgent Care in Sandstone is now open 7 days a week. No appointment needed.

Our urgent care provides care for everything ranging from imaging services like X-Rays, to treating minor to intermediate illness, injuries and pain.

So realize your best health right here in Pine County.



Essentia Health

Urgent Care-Sandstone
705 Lundorff Drive

320-245-5600
[EssentiaHealth.org](https://www.EssentiaHealth.org)



Selah Wellness Clinic LLC

**Our providers are different, we listen,
we care.**



Our practice model is as unique as you are.

At Selah Wellness Clinic LLC we do all the things other clinics do, except on terms that work for you. You decide if you want traditional care, holistic care or a mix of both.

We offer customized telehealth virtual visits & traditional in person appointments. We accept most insurances, (including VA Community Care), offering discounted same day cash pay and sliding scale payments for those with no insurance or high deductibles. We accept FSA, HSA as well as credit cards. We are a level 2/tier 2 for State of MN insurance plan coverage.

We have several providers that are accepting new patients, call today to set up a new patient appointment!

320-372-2323

Three Locations to Serve You Better!

**501 Main Street
Sandstone, MN 55072**

**263 W. 4th Street
Rush City, MN 55069**

We also offer some evening and weekend appointments!

**1300 Northridge Dr NW
Pine City, MN 55063**

We are accepting patients for all of your health needs:

All Chronic Conditions & Acute Illnesses
Annual Physical Exams
Sports Physicals
Medicare Wellness Exams
Integrative Medicine & Holistic
Palliative Care and Pain Therapies
Naturopathic Services, Western & Eastern Practices
Anxiety, Depression, PTSD & Sleep Dysfunction
Adoption & Foster Family Care
Palliative Care and Hospice Provider Services
Foot Care and Toenail Trimming

Specialized care for:
Weight Loss Management
Infusion Services
Dermal Fillers & Botox injections
Substance Use/Addiction Services
Nutrition Counseling
Indigenous Traditional Healing
Pain Therapies
Medication Management
Veteran Health Care
Ketamine Assisted Therapy
Ketamine Treatments

Customized Services for Patient Populations in Assisted Living and Nursing Homes

Psychiatric Services & Psychotherapy Services

Designer infusions: Meyer's Cocktail, Weight Loss Assist, Energy, Post Covid, Immunity and more!



320-372-2323

43

Excellent Care. Close to Home.



44

As a *leading, nationally recognized provider of healthcare* in East-Central Minnesota and Western Wisconsin, Welia Health is known for an approach to care that sets us apart: *personalized attention, a wellness focus, and a deep sense of community.* All these things are part of our mission to help you live life well.

We're now pleased to offer ***new, earlier hours*** of operation at our ***Pine City Urgency Services – 9am to 7pm, 7 days a week!***



SERVICES OFFERED AT OUR PINE CITY CAMPUS –

- ✓ URGENCY SERVICES
- ✓ COMMUNITY PHARMACY
- ✓ ORTHOPEDICS
- ✓ REHABILITATION SERVICES
- ✓ FAMILY MEDICINE
- ✓ MENTAL HEALTH
- ✓ SPORTS MEDICINE

What's up



MEDICAL



46



What's up AT WELIA

Located in East Central Minnesota, Welia Health provides primary and specialty medical services to Kanabec and Pine counties residents. It is a critical access hospital and clinic system accredited by the Joint Commission.

THE BEGINNING

The opening day of Welia Health, initially called Kanabec Hospital, is illustrated in a unique story about the doors opening early for an unexpected arrival of a baby, James Michael. The hospital was scheduled to open in January of 1946, but on Christmas Eve in 1945, Mrs. Walton Regan gave birth to James Michael, and they became Kanabec Hospital's first two patients.



HOW WE'VE GROWN

Throughout the decades, Kanabec Hospital has continuously expanded its facility and services. In 2003, Kanabec Hospital grew significantly through two major building projects, including moving the Mora Medical Clinic (then owned by Allina) to the hospital campus and adding a rehabilitation department and four-bay surgery department.

In 2011, Kanabec Hospital purchased three clinics from Allina Hospitals and Clinics (now Allina Health) located in Mora and surrounding cities, Pine City and Hinckley. Then it renamed the newly integrated system: FirstLight Health System.

In October 2015, due to new demand in healthcare services, the Pine City campus expanded its blueprint and services in diagnostic imaging, rehabilitation services, OB/GYN, orthopedics, sports medicine and urgency services.

In 2019, FirstLight Health System finished a two-year phased expansion project in Mora on its main campus. The construction project included the following:

- newly designed in-patient rooms.
- separate birth center.
- public dining area.
- an expanded rehabilitation department.
- community pharmacy.
- emergency department updates with improved helipad and ambulance access
- relocation of the off-campus Eye Care Center
- infrastructure accommodations for new technology and patient flow
- new centralized entrance to enhance security

The Mora campus has 23 licensed patient beds, a four-bay surgery suite, a 24-hour emergency department, EMT/Paramedic-staffed ambulance service and a birth center, among other services.

Amid the large expansion project in 2019, FirstLight Health System was renamed Welia Health.

WELCOME TO WELIA HEALTH

Welia Health delivers the personalized care expected in smaller communities but with the technology and specialty care commonly associated with large urban centers.

Welia Health's main campus is in Mora, with satellite campuses in Pine City and Hinckley. Pine City clinic offers primary and specialty care, urgency services and a community pharmacy, while Hinckley clinic offers primary and specialty care.

Welia Health employs over 600 employees, including family practice providers, specialists, pharmacists, nurses, lab, radiology and rehabilitation service professionals and administrative personnel.

(continued on next page)

(Welia continued from page 47)

Passionate for its commitment to developing the next generation of rural medical providers, Welia Health is a teaching site for Rural Physician Associate Program (RPAP) students and preceptors Physician Assistant (PA) and Nurse Practitioner (CNP) students. Its pharmacists serve as adjunct faculty for the University of Minnesota College of Pharmacy. In addition, it welcomes students for clinical educational experiences in the medical assistants (certified), nursing, laboratory, radiology, rehabilitation services, health information and nurse anesthetist programs. Local high school students interested in pursuing a career in healthcare have opportunities to learn in medical career exploration classes strongly supported by Welia Health.

COMMITTED TO OUR COMMUNITIES

As part of our mission, Welia Health is committed to supporting and improving the communities health by contributing and volunteering at events, including the Pine City Farmer's Market, Vasaloppet, National Walk to School Day and offering free sports physicals to local athletes.

In spring 2017, Welia Health and Mora Public Schools announced they would jointly build Kanabec County's first year-round community wellness center. The multi-million-dollar project, half funded by Welia Health, created a two-story, 52,000-square-foot wellness center attached to the Mora Elementary School, located less than a mile from the main campus. The center includes:

- a community fitness room
- athletic training room
- Staff offices
- exam rooms
- full locker room with showers
- 200-meter track
- separate 200-meter length elevated walking track
- lower-level multipurpose space that accommodates basketball/volleyball/tennis courts and more

The space offers fitness classes, wellness programs, educational opportunities and athletic training services.

Welia Health's commitment to excellent care is in our name -

- wellness focused
- engaged communities
- leading change
- innovative care
- always welcoming

We aspire to provide the highest standards of care and differentiate our services through a patient-focused organization that offers compassionate care while supporting health and wellness through outreach. After all, we aim to help our neighbors live life well.



LOCAL AND REGIONAL HEALTH CARE

SPECIALIZED SERVICES

CHIROPRACTIC & MASSAGE THERAPY

LYN LAKE CHIROPRACTIC AT WAXBERG CLINIC

805 Main St, Pine City 320-629-5288
www.lynlakechiropractic.com

NILSSON CHIROPRACTIC

253 5th St SE, Pine City
320-629-2740
www.nilssonchiropractic.com

PINE CITY FAMILY CHIROPRACTIC

805 2nd St SE, Pine Center
320-629-6717
www.dlchiropractors.com

HINCKLEY CHIROPRACTIC CENTER

10 Main St E, Hinckley 320-384-6790
https://www.hinckleychiropractic.com

SUNSHINE CHIROPRACTIC CENTER

106 Main St E, Hinckley
320-460-1884
https://www.sunshinechirocenter.com

DENTAL CARE

EMBRACE ORTHODONTICS

705 4th Ave SW, Pine City
320-629-9944
www.cambridgeorthomn.com

OAK PARK DENTAL

505 Johnson Ave SE, Pine City
320-629-2282
www.oakparkdentalclinic.com

PINE CITY FAMILY DENTAL

1105 Hillside Ave SW, Pine City
320-629-2789
www.pinecityfamilydental.com

MIDWEST DENTAL

210 Old Hwy 61 S, Hinckley
320-384-6118
www.midwest-dental.com

DR. MICHAEL BENNETT, DDS

501 Commercial Ave N, Sandstone
320-245-2208

VISION CARE

Pine Eye Associates
110 Evergreen Sq, Pine City
320-629-7262
www.pineeye.com

WALMART VISION CENTER

950 11th St SW, Pine City
320-629-7465
www.walmart.com

NORTHERN MINNESOTA EYE CARE

45 Lady Luck Dr, Hinckley
320-384-6361
www.northernmneyecare.com

MENTAL HEALTH & COUNSELING SERVICES

EMPOWER RECOVERY SERVICES

645 3rd Ave SW
320-629-0059
www.empowerrecoveryservices.org
509 3rd Ave SE 320-629-9983

NU BEGINNINGS

PSYCHOLOGICAL SERVICES

520 2nd Ave SE
320-322-5130
www.nubeginningspsychological
services.com

THERAPEUTIC SERVICES AGENCY

220 Railroad St SE
320-629-7600
www.hoperealized.com

CHANGING GAITS, INC.

27274 Monument Rd, Brook Park
320-438-4001
www.changinggaits.org

TEEN FOCUS RECOVERY CENTER

475 S Dana Ave, Rush City
320-358-4065

PLUM BEHAVIORAL HEALTH SERVICE

208 Fire Monument Rd, Hinckley
877-758-6328
https://www.plumbhs.org

ASCERTAIN RECOVERY CENTRE'

413 Commercial Ave. N, Sandstone
320-245-9966

CLINICS & HOSPITALS

	CLINIC	HOSPITAL	URGENCY	EMERGENCY	PHARMACY	
Wellia Health 1425 Main St N Pine City	×	×		×		www.welia.org 1-800-245-5671
Wellia Health 301 Hwy 65 S Mora	×	×	×	×	×	www.welia.org 1-800-245-5671
Wellia Health 620 Sandy Lane Hinckley	×					www.welia.org 1-800-245-5671
Gateway Family Health 45 Lady Luck Drive Hinckley	×					www.gatewayclinic.com (320) 384-6618
Gateway Family Health 707 Lundorff Dr. Ste 1 Sandstone	×					www.gatewayclinic.com (320) 245-2555
Essentia Health 705 Lundorff Dr Sandstone	×	×	×	×		www.essentiahealth.org (320) 245-5600
M Health Fairview 5366 386th St North Branch	×		×		×	www.mhealthfairview.org (651) 674-8353
M Health Fairview 5200 Fairview Blvd Wyoming	×	×	×	×	×	www.mhealthfairview.org (651) 982-7000



Vision-Pro
OPTICAL

WE SEE YOUR VISION

Providing quality care, personalized for you. Specializing in eye exams, affordable contacts, fashionable eyeglasses, and billing your insurance directly.

Appointments available in North Branch & Moose Lake | Visit VisionProOptical.com



VERSACE PRADA D&G





When professional eye care matters most!

We provide the highest level of optometric care for your entire family.

110 Evergreen Square SW, Pine City
320-629-7262 • PineEye.com



Offering Chemical Dependency and Mental Health Services

Empower Recovery Services leads by example in the achievement of a healthy, balanced and independent lifestyle.

320-629-0059

A strong, recognized voice for individuals and families that desire freedom from addiction

645 3rd Ave SW, Pine City, MN 55063
509 3rd Avenue SE, Pine City, MN 55063
www.empowerrecoveryservices.org

YOUR PROBLEMS. OUR SOLUTIONS.

51

HEALTHY HUMAN, LLC

6351 KOBMARGERGADE ASKOV • 651-341-3499

WELLNESS STORE • INFRARED SAUNA • PRIVATE YOGA

INFRARED SAUNA - REST, RELAX, DETOX AND RECOVER, DISCOVER THE MANY BENEFITS OF THE DRY HEAT OF AN INFRARED SAUNA

PRIVATE YOGA - WE OFFER YOGA SESSIONS FOR UP TO 2 PEOPLE. WE ALSO OFFER A 10 MINUTE SAUNA AND YOGA BUNDLE

WELLNESS STORE - OUR SELECTION OF SUPPLEMENTS INCLUDE A VARIETY OF VITAMINS, COLLAGEN, PRIMAL KITCHEN CONDIMENTS, IMMUNITY SUPPLEMENTS AND MORE.

CBD AND THC - WE HAVE CBD GUMMIES FOR SLEEP, PAIN AND STRESS. CBD FOR PETS, CBD LOTION AND MORE. WE SELL THC GUMMIES AND HAVE A LARGE SELECTION OF THC AND CBD SPARKLING WATER.



HOURS (SUBJECT TO CHANGE): MON-TUES 10AM-NOON, 3-5PM • WED-THURS 3-5:30PM • FRI 10AM-NOON, 3-5:30PM • SAT CHECK FACEBOOK

CASH AND CHECK ONLY! FIND US ON FACEBOOK: HEALTHY HUMAN ASKOV

Distinguished Funeral Services

A caring and experienced staff devoted to helping you honor the memory of your loved one with dignity and respect.



Front: Ryan Christianson, Nate Froehling
Back: Troy Janssen, Jessica Thomson, September Dunagan, Gene Stifter

www.methvenfuneralhome.com

For guidance or information about our preplanning services, funerals or cremations
PLEASE CALL TODAY.

Hinckley: 320-384-6291

Sandstone: 320-245-2376

Mora: 320-679-1822

Isle: 320-676-3300



52

Comfort, Security, with a Peace of Mind



Assisted Living

24 SPACIOUS APARTMENTS

Dining and Living Room
Beauty Salon

Four Season Porch

Walkways with Flower Gardens
Three home-cooked meals, activities and social events, 24-hour awake staff for your security, 24-hour RN on staff, transportation, weekly laundry and housekeeping.



NORTHERN PINES
ASSISTED LIVING
SPECIALIZED/MEMORY CARE
1305 8th Street SW, Pine City, MN 55063
320-629-7272



Specialized/Memory Care

12 APARTMENTS

WITH PRIVATE BATH
Dining and Living Room

Exercise Area

Large Courtyard

Three home-cooked meals, specialized activities and secured building, 24-hour awake staff, 24-hour RN on staff, transportation escort, two-person transfer, plus much more.

www.northernpinesassisted.com

Northern Pines offers quality customized care tailored to meet your needs.

What's up



PINE CITY CHURCHES

AREA CHURCHES



54

CHURCH OF CHRIST

815 7th St SW Pine City
320-336-8978

FIRST PRESBYTERIAN CHURCH

405 Main St S Pine City
320-629-3592
www.firstprespinecity.org

GRACE BAPTIST CHURCH

10634 Fairway Rd Pine City
320-629-1374
www.gracebaptistchurchpinecity.com

GRASSTON BAPTIST CHURCH

402 N. Oak St. Grasston
320-396-2645

HANDS FOR PINE CITY OUTREACH

Library Community Room
300 5th St SE Pine City
320-496-3009
FB @Hands4PC

HENRIETTE COMMUNITY CHURCH (FREE METHODIST)

21004 MN 107 Grasston
320-679-4875
FB @HenrietteFreeMethodistChurch

HOPE LUTHERAN CHURCH

301 Oak St Grasston
320-396-3925

HUSTLETOWN COMMUNITY CHURCH

17945 Blue Jay Ln Pine City
651-983-8130

IMMACULATE CONCEPTION CATHOLIC CHURCH

535 8th St SW Pine City
320-629-2935
www.icchurchpinecitymn.org

JOURNEY NORTH CHURCH

840 Main St S Pine City
320-629-6111
www.JourneyNorthChurch.com

LIVING HOPE CHRISTIAN CENTER

11915 Fairway Rd Pine City
320-629-6136
www.lhccpc.com
FB @livinghopepinecity

OPEN ARMS CHURCH OF GOD

406 Pine St Grasston
320-396-3373
www.openarmscog.org

OUR REDEEMER LUTHERAN CHURCH

825 Golf Ave SW Pine City
320-629-2985
www.orlcpc.com

PINE CITY EVANGELICAL FREE CHURCH

625 Golf Ave SW
Pine City
320-629-2584
www.pcefc.com

ST. JOSEPH'S CATHOLIC CHURCH

19390 Praha Ave Beroun MN
320-629-2935

SOUTH PINE BAPTIST

Library Community Room
320-336-9292
www.southpinebaptist.org

CHURCH

300 5th St SE Pine City

ZION LUTHERAN CHURCH

410 Main St S Pine City
320-629-3683
www.zionpinecity.org



**More bank
for your buck.**

- ✓ Competitive checking, savings, and CD rates
- ✓ Fast, customized equipment financing
- ✓ Hands-on small business lending
- ✓ Unbeatable customer service



StearnsBank.com | Member FDIC | Equal Housing Lender 

600 Hillside Avenue SW
Pine City, MN 55063 | (320) 629-6713



**LARGE FORMAT
PRINTING**
No Job is Too Large!
Large format printing is a great way to help get your business noticed. Whether it's a poster or a banner, it's hard to get missed with large format advertising.

**HIGH-QUALITY,
FOUR-COLOR
PRINTING SERVICES**
Commercial & Digital Printing
We provide full-color custom business printing solutions at affordable prices. Our professional staff prides itself on quick turnaround and high quality products you can be proud to represent your company.

**PROMOTIONAL
PRINTING**
Get Noticed with
Promotional Printing Services
Our custom promotional products make great giveaways and are a nice way to show your customers you appreciate them.

Kanabee Publications inc.
COMMERCIAL PRINTING

Call for a Quote Today! 320-679-2661
printing@moraminn.com / www.moraminn.com/printing

55

Woodlands
NATIONAL BANK



Toll Free 888.532.4142
woodlandsnationalbank.com
122 East Main Street • P.O. Box 190
Hinckley, MN 55037

Member **FDIC**  **EQUAL HOUSING
LENDER**



Minnesota Properties

Specializing in lifestyle real estate - residential, country homes, cabins, waterfront, hunting and rec land, farms, commercial, and more!



NO ONE KNOWS THE COUNTRY LIKE WE DO.®

Pine County Office:
60519 State Hwy 23
Finlayson, MN 55735
(320) 245-2502

Carlton County Office:
67 Arrowhead Ln
Moose Lake, MN 55767
(218) 485-0229

UCMinnesota.com



Proud to be a

2022

TOP BROKERAGE



Ranked #42 of 500 offices

Local experts since 1984



REALTREE™
UNITED COUNTRY
HUNTING PROPERTIES



SCAN HERE



We Specialize In

- PURCHASES
- TITLE INSURANCE
- CLOSING & ESCROW SERVICES FOR BUYERS & LENDERS
- REFINANCES
- NEW CONSTRUCTION

closeattitle.com
952-767-0321

OFFICES IN

Pine City | Hinckley | Mora | Milaca | Isle | Several Metro Locations



Cabak Law, LLC
Attorney At Law

John M. Cabak, Attorney
243 – Main Street South
Pine City, MN 55063



Sandstone office:
Wednesdays by appointment

320-629-2529
www.cabaklaw.com

57

NextHome

PERRINE & ASSOCIATES
REALTY



Amy Perrine
218.522.0323



Elena Davidson
218.390.1245



Elsa Ring
612.801.2764



Tony Bakhtiari
763.442.0004



Sheldon Johnson
612.685.7830



Mike Brown
320.630.4200

**Our Amazing Team of Full-Time, Experienced Agents are ready to help you
Sell or Buy your NextHome! Stop in or Call us today!**
9002 Main St. Sturgeon Lake, MN 55783
Office: 218.372.3767

Each office is independently
owned and operated.



PINE CITY AREA CHAMBER OF COMMERCE

New Resident Welcome Packets • Chamber Business Directory
Community Calendar • City & County Maps • Recreational Maps
Business Training Events • Networking & Happy Hour Events
Regional Partnerships • Tourism Information Center

58



**GOLF TOURNAMENT
JUNE 9**



**FREEDOM FEST
JUNE 24**



**PINE COUNTY PARADE
AUGUST 5**

**FIND MORE LOCAL EVENT HIGHLIGHTS ONLINE AT
WWW.PINECITYCHAMBER.COM**



**FALLING FOR PINE
OCTOBER**



**HOLIDAY MADNESS
DECEMBER 2**



Pine
City
Area
Chamber
Of
Commerce

***Whether you are a resident or visitor to Pine City,
we invite you to experience all that our community has to
offer! Contact us to learn more about our active and growing
business members - or learn how your business can join us!***

**315 Main St S. • Pine City MN 55063 • 320.322.4040
info@pinecitychamber.com**



What's up



PINE CITY HISTORY

PINE CITY HISTORY

PINE CITY AREA HISTORY ASSOCIATION

The Pine City Area History Association's mission is the collection, preservation and dissemination of knowledge about the history of the Pine City Area and to relate that history to that of the State of Minnesota. The organization's goals and mission work to complement and collaborate with the work of the Pine County Historical Society.

Quarterly meetings addressing a local history topic are held in January, April, July and October. A weekly meeting to discuss local history is also held on Tuesday afternoons in the Pine City Library Community Room. It is an informal discussion and participants often bring show and tell. Those interested in participating should visit the website or facebook page for up-to-date information.

The history association's website contains a wide variety of resources including an obituary file, maps, yearbooks, phone books, newspapers and nearly 2000 items from

our collection. This group works throughout the year to create digital presentations on various aspects of local history that celebrate the history of the Pine City Area. Some of their presentations have been turned into books

You can view the books online at www.pinecityhistory.com and you can order copies of them for your own use through the site as well.

For more information and upcoming meetings:

Judy Scholin (320) 322-9208
Pine City Area History Association
315 Main Street South, Suite 101,
Pine City, MN 55063
www.pinecityhistory.com
www.facebook.com/pinecityhistory

PINE CITY BUSINESS DISTRICT.



RURAL SCHOOL MUSEUM

The one-room schools that once dotted the Minnesota landscape have gone out of business. The reorganization act of 1947 set up procedures that consolidated districts with a county.

In Pine City, the District #69 building was known as the "Pine Tree School" and was originally located east of Pine City and east of Cross Lake. On August 4, 1971 the school building was relocated to its current location just off Hillside Avenue, where it now functions as a rural school museum - rich in history and artifacts.

While the schoolhouse is quiet now, in July it will be bustling with children dressed as they might have been in the early 1900s. Lessons will be taught just the way they were in the days when rural schools dotted the countryside. The teacher will share a wealth of knowledge centered on several special themes. The idea of the program is to give youngsters a taste of what school was like in the late 19th and early 20th centuries and help visitors understand and appreciate the educational system of old. The boys in the summer classes usually wear bib overalls or black pants

tucked into long black socks to give the appearance of knickers. Girls wear long dresses with pinafores, sunbonnets and shawls. Classroom lessons have covered topics like printing, maple syrup, plants of the early days and of course, reading, writing and arithmetic. Pupils carry their lunches in baskets or syrup pails similar to those packed in the days of one room schoolhouses. There were no packaged lunch meats or Hostess Twinkies at that time!

Rural schools are part of America's heritage, and by participating in classes of this kind, children help to preserve this history. The experiences of the rural school can be passed on from generation to generation rather than forgotten.

Interested in viewing the Museum? It will be open on Saturdays from 12 - 3PM.

The Rural School Museum is coordinated by the Rural School Committee under the guidance of the Pine City Area History Association.

You can learn more about the Rural School Experience online at www.pinecoruralschool.webs.com

61

DISTRICT 69 ALSO CALLED THE WANOUS SCHOOL - 1937.



District 69

Front Row:
Bernice Prihoda Ernest Stoffel Edwin Prihoda Zeldora Trippler
Eugene Kubat Dorothy Stoffel Lorraine Drimel Paul Carlson
Joey Hruska Pat Schwartzwald Theresa Stoffel
Middle Row:
Eileen Kubat Kenneth Rose Dorman Trippler Josephine Prihoda
Edwin Skalsky George Drimel Ralph Stoffel Kenneth Kubat
Kenneth Schwartzwald Dulcie Trippler Marjorie Hruska
Back Row:
Roland Planert George Stoffel Howard Prihoda Dewey Trippler
Harold Prihoda Emmet Rose Annette Fayton Doreen Rose
Rita Thibodeau Marjorie Wanous Rosemary Stoffel



**Family Owned and
Operated Since 1981**

**Diesel • Gasoline • Fuel Oil
Lubricants • Propane
Delivery and Service**



**1015 N. Industrial Rd.
Mora, MN 55051**

320-679-3037 • BeaudryOil.com



Custom Exhaust & Repair • Hinckley, MN

- Custom Pipe Bending
- Total Transport Towing
- Total Recovery
- Buying Junk Cars
- Complete Repair Service
- Tire Repair & Computer Spin Balancing

320-384-7664

Pine City Building Center
is your specialist for
lumber, windows, doors,
millwork, siding & much more!
*Our friendly staff will take care of you.
We have building supplies and we even
deliver your materials right to you!*
We specialize in new home construction,
remodeling, outdoor buildings & more!

**For Projects
of Any Size**

**FEDERATED CO-OPS
Inc.**
Your Cooperative Lumber Source Since 1956!
Pine City Building Center ~ 615 4th St SE ~ Pine City
1-800-398-2227 ~ federatedcoops.com



C&A SEAMLESS GUTTERS

Chris & Ann Campbell

(320) 629-4674

cacampbellconstruction@gmail.com

**Framing • Roofing • Siding
Insulated Poured Walls • Flatwork
Gutters • Soffit • Fascia**

FREE ESTIMATES!

license number BC462624

**SAUSER'S
HARDWARE**
Serving you for over 100 years!
DOWNTOWN PINE CITY

***Full Line Hardware and Paint
*Outstanding Gift and Home Decor
*Power Equipment
*Small Engine Repair
*Major Appliances
*Farm Supplies**

**WE'VE GOT WHAT
YOU NEED!**

320-629-3437

STIHL® Full Line STIHL Equipment Dealer
Highway 61, Downtown Pine City

VISA
MasterCard
AMERICAN EXPRESS
DISCOVER

D&E
Heating & Air Conditioning
1-800-630-9659

Repairs, Maintenance, Installs & Estimates

- Furnace & Boilers
- Mini Splits
- Geothermal Systems
- AC & Heat Pumps

Located in Hinckley, MN and servicing the surrounding areas!
www.deheatingcooling.com

Amana **LIFE TIME WARRANTY**

AUSMUS
FLOORING & FURNISHINGS

Serving the Area for Over 60 Years!

320-384-6101
ausmusflooring@gmail.com

102 Main Street East, Hinckley 

Subscribe to the

NORTH PINE COUNTY NEWS

A Continuation of the
Askov American, Hinckley News
and Pine County Courier

PINE CITY PIONEER

PO Box 310 • Hinckley, MN 55037
320-384-6188

DALE'S
HEATING & APPLIANCE

**SALES
INSTALLATION
SERVICE**

(320) 629-3531

815 Main Street South, Pine City, MN 55063
24 HOUR EMERGENCY SERVICE
www.dalesheatingandappliance.com

LENNOX
PREMIER DEALER

Amana
MAYTAG

Whirlpool
SPEED QUEEN

Cavallin Ford
320-629-2549
I-35 Exit 169, 630 13th Street SW, Box 108,
Pine City, MN 55063
www.cavallinford.com
Over 60 years of Sales & Service!



NEW & USED CARS & TRUCKS HOURS: Mon.-Fri. 8 am-5:30 pm; Sat. 8 am-3 pm

FREE ESTIMATES

HINCKLEY COLLISION CENTER

Auto Body & Glass
Specializing in Hail Damage Repair
320-384-7002

Snapshots TO SANDSTONE



Peter Spartz
Mayor, City of Sandstone

Sandstone is a nice, quiet little town located in the “middle of everything.” We have a wonderful grocery store in Chris’ Food Center, just one of the hidden jewels in Sandstone. Other jewels include Cheri’s Flowers & Gifts (and don’t forget the fudge!), the Sandstone Golf Course, Sandstone Ace Hardware (if you can’t find it here, you just don’t need it), Arlen Krantz Ford, Whitney’s Country Café, Lampert Lumber, Quarry Quilts & Yarns, Quality Home & Sports Center, Hard Water Sports and many additional jewels to be explored. Just pop off I-35 as you’re heading north, and check us out!

A visit to Robinson Quarry Park is a must! This park is the site of the Historic Kettle River Sandstone Company Quarry. You will see the jewels left behind from this fascinating quarry operation. And today, the park has been transformed into a climber’s dream. Climbers come from all over Minnesota and beyond to explore the cliffs – even in winter, as ours is one of three ice climbing venues in the state (and the first one, I have to say).

Stop by this summer to see the new Sandstone Public Library building on Main Avenue downtown. We are very proud of our new library, which offers many jewels to all who visit. You won’t want to miss it.

While you’re at it, take in the festivities of Quarry Days on August 11-12. Many exciting activities are planned: Friday jewels include bingo, kids games, Sandstone Royalty Coronation, family friendly Karaoke, and Fireworks; Saturday don’t miss the Sandstone Fire Department Pancake Breakfast, 5K fun run/walk, parade (starts at 10:30), kids games, bingo, car show, Fire Department water ball, live music all day and a street dance in the evening with Stone Daisy! Plenty of food vendors and the Sandstone Lions Beer Garden, too!

Check out Oktoberfest on September 30. The Jolly Huntsmen Band will perform in authentic lederhosen costume from 1:00-5:00. Kids games, food, beer, wine, crafters – many more jewels to discover!

Peter Spartz, Mayor, City of Sandstone

SANDSTONE GOVERNMENT

Kathy George

(City Administrator/ City Clerk)

Alana Tyson (Deputy Clerk)

Leaha Jackson

(Deputy Clerk/Utility Billing)

Charles Koch

(Deputy Clerk/Finance)

Sirena Samuelson

(Community Service Partner)

COMMISSIONS/BOARDS LIAISON’S

Spartz Planning Commission

Palmer Park & Recreation

Spartz Library Board

Rahier, Palmer, George, Vacant (Owner), Wright(renter)

Rental Appeal Board

COMMITTEES

Spartz/Palmer EDA Loan

Gaede/Spartz Personnel

P. Spartz, A. Spartz, Degerstrom,

Eberhardt Fire & Rescue

P. Spartz, George, A. Spartz Fire

Relief Assn

EDA APPOINTMENTS

Palmer Chair

George Executive Director

Spartz/Palmer Loan

Matt Anderson, and

Tim Schmutzer Commissioners: Council Members

MAYOR

Peter Spartz

DEPUTY MAYOR

Cassie Gaede

COUNCIL MEMBER

Julena Rahier

COUNCIL MEMBER

Val Palmer

COUNCIL MEMBER

Cassie Gaede

COUNCIL MEMBER

Randy Riley

A group of people in winter gear are preparing for a climb on a snowy mountain. One person is adjusting a device, another is tying a shoe, and others are standing nearby with climbing equipment on a wooden bench.



SANDSTONE ARTS OPPORTUNITES

210 GALLERY AND ART CENTER (FORMERLY OLD SCHOOL ART CENTER)

The Mission of the 210 Gallery and Art Center is to “build and enrich the community through arts education, exhibition and performance and support the efforts of local and regional artists and provide a venue for public events.”

210 Commercial Ave. | Sandstone, MN | (320) 216-7635 | info@osacmn.org

SANDSTONE HISTORY AND ART CENTER

Sandstone History and Art Center is home to a wide variety of artifacts relating to The Quarry, Military, The Railroad, ‘The Rock,’ Federal Correctional Institution, Hinckley Fire, Newspaper Archives, Plat Maps, Local Businesses, and more!

402 Main Street | Sandstone, MN | (320) 245-2138 | <https://sandstonehistorycenter.com>

SANDSTONE EDUCATION

EAST CENTRAL SCHOOLS

East Central Public School, in partnership with families and community, is dedicated to achieving educational excellence by developing in all students the confidence, knowledge, and responsibility to succeed.

61085 State Hwy 23 | Finlayson, MN 55735 | 320.245.2289



67



AREA CHURCHES



68

COMMUNITY WORSHIP CENTER

114 Minnesota St Sandstone
320-245-2464
cwcfamily.com

EVANGELICAL FREE CHURCH

522 Main St N Sandstone
320-245-2459
sandstoneefc.com

GRACE LUTHERAN CHURCH

339 Division St Sandstone
320-245-2449
gelsandstone.org

FIRST LUTHERAN CHURCH ELCA

301 Lawler Ave S Hinckley
320-384-6393
flchinckley.org

SAINT LUKE'S CATHOLIC CHURCH

122 Commercial Ave N Sandstone
320-245-5175
stpatrick-luke.org

ST PAUL LUTHERAN CHURCH

405 2nd St NW Hinckley
320-384-6267
stpaulhinckleymn.org

TRINITY ESPICOPAL CHURCH

Commercial Ave N and
State Hwy 123 Sandstone
320-245-5175
stpatrick-luke.org

SANDSTONE HISTORY

Sandstone Village was named after the sandstone quarries along the bluffs of the Kettle River. The Ojibwe word for Sandstone is Asiniikaaning (at the quarrying place). The Village was incorporated on September 28, 1887, and destroyed by the 1894 Hinckley fire.

On April 14, 1920, the city of Sandstone was formed by the merging of two villages, Fortuna and Sandstone. After the merging of the villages, the village of Sandstone separated from the township.

Today, the quaint town of Sandstone is home to almost 2400 residents and several exciting businesses like Quarry Quilt Shop, Hard Water Sports (Rafting and Climbing Guide Service), and Midwest Country Music Theater.

Every January the sandstone bluffs of Robinson Park are host to an annual Ice Fest attracting ice climbers from all over the United States.

What's up AT ESSENTIA



Essentia Health has proudly served patients in Sandstone since 1997. Our partnership continued a rich legacy of high-quality health care in the community, which dates to 1956 when the 27-bed Pine County Memorial Hospital was built. Since then, the hospital has undergone many changes, both physically and in name. Most recently, Essentia collaborated with the Northern Pine Area Hospital District to open a new nine-bed critical access hospital and emergency room in 2017. This investment included a Level IV trauma center and designation as an acute stroke ready hospital.

“We are proud to serve this part of the state,” said Dr. Tom Witt, Sandstone administrator. “Essentia puts a heavy focus on providing the best possible health care in rural areas, and our commitment to Sandstone and the surrounding communities illustrates that.”

The hospital offers inpatient and outpatient services, meaning you can receive care for a variety of ailments and conditions, some of which allow for same-day discharge while others require overnight and multi-day stays.

Essentia Health-Sandstone also offers a 24/7 emergency room staffed with highly trained care teams ready to meet your needs around the clock.

Essentia is proud to offer urgent care at this location as well. Urgent care is an intermediate level of care that focuses on illnesses and injuries that are not life-threatening but may need immediate attention, such as an X-ray and/or lab tests that require a blood draw. Urgent care is often used for cuts, stitches, dog bites, colds, flu symptoms, STDs, tooth pain and other non-emergency needs. Patients can rest easy knowing they can visit us without an appointment and receive expert, prompt care seven days a week. Essentia Health Urgent Care-Sandstone is open from 9 a.m. to 7 p.m. Monday through Friday and 8 a.m. to 5 p.m. on weekends.

The hospital’s wide range of treatment options includes imaging, 3D mammograms, radiology, lab services, cancer screenings, cardiac care, stroke care, infusion services and oncology care and much more. At Essentia, we are committed to delivering high-quality care and providing as many services as we can close to home for the patients we are privileged to serve.

Additional offerings include rehabilitation services such as speech therapy, physical and occupational therapy, both inpatient and outpatient.

“Investing in this facility and bringing in dedicated staff to live out our mission every day and provide the highest-quality care possible to this area demonstrates our commitment to the patients we are privileged to serve,” said Dr. Witt. “By providing a wide variety of services right here in Pine County, we are able to care for our patients while eliminating transportation barriers and allowing them to get care and heal close to home.”

Patients will find a full range of amenities at this location, including a café, free wi-fi, a retail pharmacy and relaxing and rejuvenating waiting areas.

For non-emergency visits, you’ll find free parking in front of our facility. To enter the hospital, go through the main door that leads to both the hospital and clinic. For emergency care, follow the signs to the emergency room entrance.

Explore our patients and visitors section to find information about billing, financial assistance, medical records, patient rights and responsibilities.

Essentia is proud to carry on the legacy of health care in this region and care for our patients in Pine County and surrounding areas. Whether you need emergency care or help along the road to recovery, you can recover with confidence under our watch.

SnapshotsTO HINCKLEY



CONVENTION & VISITORS BUREAU:

Leaha Jackson, Kristy Hosler, Tim Burkhardt

Don Zeman Police

Don Zeman Personnel

City Council Summer Rec.

ECONOMIC AND

DEVELOPMENT AUTHORITY

Tim Burkhardt

Wayne Cessna

Tom Lymburner

Dave Ubl

Don Zeman

PLANNING COMMISSION

Ron Ausmus

Dave Ubl

Keith Hopkins

John Frank- Council Rep.

PARK BOARD

Dave Ostenson - At large

Shalai Moffatt - At large

Dewaine Palmer - School Board

Judd Rabe - Baseball

Don Carlier - Softball

Joel Jerry - Hockey

Tim Burkhardt - Council Rep.

CIVIL DEFENSE

Leaha Jackson City Administrator

Don Zeman Mayor,

Co-City Civil Defense Directors

WEED INSPECTOR

Leaha Jackson City Administrator

Kristy Hosler City Administrator

Mark Perry Planning & Zoning
Administrator/Building Inspector
Administration

Tom Barmettler Finance Director
Administration



What's up



IN HINCKLEY

HINCKLEY ARTS OPPORTUNITIES

ECRAC

Mission: The East Central Regional Arts Council's mission is to support the arts and bring the life enhancing values they afford to all Region 7E residents.

540 Weber Ave S - Ste 109, Hinckley, MN 55037 320-591-7031 x2

72

Sweet Summer Sounds
Hinckley Westside Park - 6:30-8:00 pm

June 15th
Monroe Crossing

June 22nd
Richie Yurkovich & Polkarioty

June 29th
DULUTH TRANSIT AUTHORITY

July 13th
B-Sides / No Limit

July 20th
Pale Ales Bluegrass

July 27th
The Arcades

August 1st
Robby Vee's Rock n Roll Caravan

This activity is made possible by the voters of Minnesota through a grant from the East Central Regional

HINCKLEY EDUCATION



HINCKLEY ELEMENTARY SCHOOL

Hinckley Elementary School is a Pre-K to 6 school with over 500 students.

We know there are many places you can enroll your student. However, not all education options are equal. We are proud of our success and are happy to offer a warm, inviting and safe place for all learners to grow. In partnership with a supportive community, we offer an education for the 21st century with the goal to shape citizens of the future with skills for the world.



73

HINCKLEY-FINLAYSON HIGH SCHOOL

201 Main Street East, Hinckley, MN 55037
320-384-6277

**"Education is not the filling of a pail,
but the lighting of a fire."**

William Butter Yeats



AREA CHURCHES

BIBLE BAPTIST CHURCH OF HINCKLEY

209 Old Highway 61 N Hinckley MN
320-384-7879

CLOVER COMMUNITY CHURCH

50380 State Highway 48 Hinckley
320-384-6639
ccchinckley.org

FAITH BAPTIST CHURCH

601 2ND St SE Hinckley
320-384-6312
fbcmendon.com

FIRST LUTHERAN CHURCH ELCA

301 Lawler Ave S Hinckley
320-384-6393
flchinckley.org

FIRST PRESBYTERIAN CHURCH

1813 Fire Monument Rd Hinckley
320-384-6440
firstpreshinckley.org

HINCKLEY EVANGELICAL FREE CHURCH

518 Barry Ave Hinckley
32-384-6387
hinckleyefree.org

ST JOHN LUTHERAN CHURCH

3289 Velvet St Hinckley
320.384-6884
stjohnshk.org

SEVENTH-DAY ADVENTIST CHURCH

105 Blair Ave S Hinckley
320-384-6167

SAINT PATRICK'S CATHOLIC CHURCH RECTORY

203 Lawler Ave S Hinckley
320-384-6313
stpatrick-luke.org

ST PAUL LUTHERAN CHURCH

405 2nd St NW Hinckley
320-384-6267
stpaulhinckleymn.org

TRINITY EPISCOPAL CHURCH

305 1ST St SW Hinckley
320-245-2778

WALKING BY FAITH

APOSTOLIC MINISTRIES

603 Old Highway 61 Hinckley
320-279-9194

ZION LUTHERAN CHURCH

ELCA CLOVERDALE

38523 State Highway 48 Hinckley
320-384-0096
zionlutherancloverdale.org

74

HINCKLEY HISTORY

In the 1800's, the Ojibwe Natives lived near the St. Croix River and were the first to call *Gaa-zhiigwanaabikokaag* (Hinckley) home. The thick grove of white pine trees around Hinckley attracted loggers and they built the first sawmill in 1869. Later that year, the Lake Superior and Mississippi Railroad made its way into Hinckley. For 20 years the lumber industry was prosperous, and the town grew to a population of 1,400.

Then a tragic event occurred, placing Hinckley securely on the map.

1894 was one of the driest years on record with low rainfall, low humidity, and blowing winds. On September 1, 1894, these factors coupled with a hot day and small fires that merged, created a firestorm that burned six small towns, killed 418 people and burned over 400 square miles.

In honor of the residents who perished in the fire, a monument was built and is located on Highway 48 just east of Interstate 35. Another monument honoring the deceased fire victims is located in Brook Park.

The Hinckley Fire Museum is informative and full of fascinating facts about the Great Fire.

Today, Hinckley is famous for caramel rolls, bike trails, Grand Casino Hinckley, and its history.

PINE COUNTY PLACES TO VISIT AND THINGS TO DO

210 GALLERY AND ART CENTER

210 Commercial Ave. N, Sandstone – 320-216-7635

GRAND CASINO HINCKLEY

777 Lady Luck Dr., Hinckley – 320-384-7777

GRAND CINEMA HINCKLEY

845 Weber Ave. S, Hinckley – 320-384-7999

GRAND NATIONAL GOLF COURSE

Lady Luck Drive – 320-384-7427

HARD WATER SPORTS

511 Main St., Sandstone – 651-302-1774

HINCKLEY FIRE MUSEUM

106 Old Hwy 61 S, Hinckley – 320-384-7338

MIDWEST COUNTRY MUSIC THEATER

309 Commercial Ave., Sandstone – 320-245-2429

OSPREY WILDS

54165 Audubon Dr, Sandstone – 320-245-2648

PINE CITY COUNTRY CLUB

10413 Golf Course Rd, Pine City, MN 55063

PINE COUNTY HISTORY MUSEUM AND EVENT CENTER

6333 HC Andersen Alley, Askov – 320-838-1607

SANDSTONE GOLF COURSE

343 Lark St., Sandstone – 320-245-0471

SANDSTONE LANES

406 Main Street, Sandstone – 320-245-2237

WILLARD MUNGER BIKE TRAIL

trail runs between Hinckley and Duluth



LAKES

Go fishing, boating, swimming or sit on the shores of several lakes and rivers in Pine County.

BIG PINE LAKE – Finlayson – 387 Acres

CROSS LAKE – Pine City – 942 Acres

GRINDSTONE LAKE – Sandstone – 526 Acres

ISLAND LAKE – Sturgeon Lake – 510 Acres

OAK LAKE – Duquette – 442 Acres

POKEGAMA LAKE – Pine City – 1,474 Acres

SAND LAKE – Moose Lake – 501 Acres

SQUAW LAKE – Pine City – 151 Acres

STURGEON LAKE – Sturgeon Lake – 1,405 Acres

UPPER PINE LAKE – Finlayson – 210 Acres

RIVERS

KETTLE RIVER

PINE RIVER

LOWER TAMARACK RIVER

SNAKE RIVER

ST. CROIX RIVER

PARKS

BANNING STATE PARK – Sandstone

CHENGWATANA STATE FOREST

ROBINSON QUARRY ICE PARK – Sandstone

ST. CROIX STATE FOREST

WEST SIDE PARK – Hinckley

PINE CITY AREA CHAMBER OF COMMERCE

Since October 1969 the Pine City Area Chamber of Commerce has been an active partner in **Economic Development** and promotion of the greater Pine City area. The organization serves as a resource for local businesses and retailers who strive to meet the needs of a growing community. Visitors depend on the Chamber for guidance to recreational activities, shopping opportunities and local amenities that make our community unique. The office location in Downtown Pine City provides a distribution point for maps and brochures as well as business cards for referrals to many area businesses. Weekend visitors can also find an outdoor brochure rack and bulletin board along Old Hwy 61 at 315 Main Street.

The Chamber provides educational and networking opportunities for its members through partnerships with local resources. The **Network 2 Learn** program incorporates an educational presentation into the networking event. These events include topics like website

development, social media marketing strategies and customer services. Additionally, **Happy Hour** events are scheduled to allow members to gather in a more informal setting to meet and learn about each other.

Membership with the Pine City Area Chamber is open to any business, non-profit or individual within the greater Pine City area. We provide a wide variety of membership benefits to our members and every member's needs are different, so a conversation with our staff can help to identify what benefits are needed for your business. The Chamber office is staffed daily from 8:30 - 2:30, and appointments are recommended to ensure availability.

The Chamber serves as the coordinator for several community events and manages a **Community Calendar** on our website that shares information on events organized by other non-profit groups and businesses in the region.

CHAMBER EVENTS



FREEDOM FEST Held annually on the last Saturday in June. This unique festival is made possible by the work of community organizations that work together to host events on this weekend. The events include a car show, kid's activities, food booths, street dance and fireworks.

PINE COUNTY PARADE The Chamber works in cooperation with the Pine County Fair Board to organize the parade. Historically the parade includes close to 100 units including bands, businesses, non-profits, and performing artists. Held on Saturday at 4 pm, the first weekend in August.

HOLIDAY MADNESS Held annually on the first Saturday in December, this event has seen a lot of changes over the years. The annual tree lighting, a lighted parade, and a shop local initiative are all a part of this community event.



2023 MEMBERS LIST

ACCOUNTING & TAX SERVICE

CURRIE, MYERS & ASSOCIATES, LTD.

539 Main Street South
Pine City MN 55063 - 320-629-2090
www.cmassociatesltd.com

TODD'S TAX SERVICE, LLC

165 5th Street SE
Pine City MN 55063 - 320-629-4745
<https://www.toddstaxservice.com>

ADVERTISING & MEDIA RESOURCES

NAMEBANK DIRECT MAIL

Pine City MN 55063 - 651-777-5545
<http://namebankusa.com>

PINE CITY PIONEER

405 2nd Avenue SE
Pine City MN 55063 - 320-629-6771
<http://www.pinecitymn.com>

Q MEDIA GROUP, LLC

15429 Pokegama Lake Rd
Pine City MN 55063 - 320-629-7575
<http://www.wcmpradio.com>

STARMARKER MARKETING

43987 County Highway 61
Hinckley MN 55037 - 218-366-9179
<http://www.starmarkermarketing.com>

ARTS & ENTERTAINMENT

BRAHAM EVENT CENTER

655 8th Street SW
Braham MN 55006 - 320-396-3177
<http://www.brahamcenter.org/>

GRAND CASINO HINCKLEY

777 Lady Luck Drive
Hinckley MN 55037 - 320-384-4723
www.grandcasinomn.com

PINE CITY HERITAGE PLAYERS COMMUNITY THEATER

Pine City MN 55063
www.pinecityheritageplayers.com

HOLLYWOOD PYROTECHNICS

1567 Antler Point
Eagan MN 55063 - 651-454-7976
www.HollywoodPyrotechnics.com

NORTHERN WONDERS

56605 Nature Avenue
Pine City MN 55063 - 763-248-5555

PEACEFUL PINES PUMPKIN PATCH & APPLE ORCHARD

13650 Government Rd
Pine City MN 55063 - 320-591-0007
<http://www.peacefulpinesfarm.com>

PINE CENTER FOR THE ARTS

265 5th Street SE
Pine City MN 55063
www.pinecenter.org

PINE CITY ARTS COUNCIL

Pine City MN 55063

SNAKE RIVER FUR POST

12551 Voyageur Lane
Pine City MN 55063 - 320-629-4654
<http://www.mnhs.org/places/sites/nwcfp>

TIL THE CASKET DROPS INK

150 Main Street S
Pine City MN 55063 - 612-552-8306

AUCTION SERVICES

HEIDELBERGER FARM EQUIPMENT

3923 State Hwy 70
Pine City MN 55063 - 320-629-1122
<http://heidelergerllc.com>

AUTOMOBILE LICENSE

PINE COUNTY LICENSE CENTER, INC.

809 Main Street South
Pine City MN 55063 - 320-629-2560

AUTOMOTIVE REPAIR & SERVICE

EAST CENTRAL TOWING

220 West 5th Street
Rush City MN 55069 - 320-358-4869
www.eastcentraltowing.com

MATT'S AUTOMOTIVE SERVICE CENTER

635 13th Street SW
Pine City MN 55063 - 320-629-0123
www.MattsAutoServiceCenter.com

RICK'S AUTO

1035 Main Street North
Pine City MN 55063 - 320-629-5050
<http://www.ricksautopinecity.com>

TOP WASH

455 Main Street South
Pine City MN 55063 - 320-309-0384

AUTOMOTIVE SALES

CAVALLIN FORD

630 13th Street SW
Pine City MN 55063 - 320-629-2549
www.cavallininc.com

EIDE AUTO CENTER

715 Northridge Ct NW
Pine City MN 55063 - 320-629-5300
www.eidechryslerdodgejeep.com

PINE CITY AUTO SALES

205 8th Ave SE
Pine City MN 55063 - 320-629-2277
<http://www.pinecityautosales.com>

BANKS

FRANDSEN BANK & TRUST

560 3rd Ave SE
Pine City MN 55063 - 320-629-2561
<https://www.frandsenbank.com>

NORTHWOODS BANK OF MN

1015 Hillside Ave SW, Suite #1
Pine City MN 55063 - 320-629-5000
<http://www.northwoodsbank.com>

SPIRE CREDIT UNION

900 Main Street South
Pine City MN 55063 - 651-215-3500
<https://www.myspire.com>

STEARNS BANK

600 Hillside Ave SW
Pine City MN 55063 - 320-629-6713
www.stearnsbank.com

US BANK

625 Hillside Ave SW
Pine City MN 55063 - 320-629-6777
<http://www.usbank.com>

CHILD CARE

EARLY YEARS ACADEMY

1687 Main Street North
Pine City MN 55063 - 320-322-5134
<http://www.eyachildcare.com>

ST. MARY'S EARLY LEARNING ACADEMY

815 6th Ave SW
Pine City MN 55063 - 320-629-3953
<http://www.stmaryskidsacademy.com>

CHIROPRACTIC SERVICES

LYN LAKE CHIROPRACTIC, WAXBERG CLINIC

805 Main Street South
Pine City MN 55063 - 320-629-5288
<https://www.lynlakechiropractic.com>
Lyn-Lake-Chiropractic-Pine-City-aka-Waxberg-Clinic

CHURCHES

FIRST PRESBYTERIAN CHURCH

405 Main Street South
Pine City MN 55063 - 320-629-3592
<http://firstprespinecity.org/wp/>

HANDS FOR PINE CITY

PO Box 164
Pine City MN 55063 - 320-496-3009

IMMACULATE CONCEPTION CATHOLIC CHURCH

535 8th Street SW
Pine City MN 55063 - 320-629-2935
<http://www.icchurchpinecitymn.org/>

JOURNEY NORTH CHURCH

840 Main St S
Pine City MN 55063 - 320-629-6111
www.iloveourchurch.com

OUR REDEEMER LUTHERAN CHURCH

825 Golf Ave SW
Pine City MN 55063 - 320-629-2985
www.orlpc.com

PINE CITY EVANGELICAL FREE CHURCH

625 Golf Avenue SW
Pine City MN 55063 - 320-629-2584
www.pcefc.com

ZION LUTHERAN CHURCH

410 Main Street South
Pine City MN 55063 - 320-629-3683
<http://www.zionpinecity.org/>

CLEANING SERVICES

MAYTAG LAUNDRY

620 Johnson Avenue SW
Pine City MN 55063 - 651-775-1914
<https://maytagcoinlaundry.compine-city.php>

MOHR FURNACE & DUCT CLEANING

18020 Cross Park Rd
Brook Park MN 55007 - 320-293-2359
<https://www.mohrsductcleaning.com>

COMMUNITY & CIVIC ORGANIZATIONS

A PLACE FOR YOU

220 3rd Ave SE
Pine City MN 55063 - 320-438-7070
<http://www.apfy.org/>

CHANGING GAITS, INC.

27274 Monument Rd
Brook Park MN 55040 - 320-438-4001
<http://www.changinggaits.org/>

CROSS LAKE ASSOCIATION

PO Box 325
Pine City MN 55063 - 612-723-8578

EAST CENTRAL MINNESOTA PRIDE

Braham MN 55006 - 320-396-3726
<https://eastcentralminnesotapride.org>

GREATER PINE AREA ENDOWMENT

Pine City MN 55063 - 320-322-4040
<http://www.pineendowment.org>

GUMI CAMP

247 5th Street SE
Pine City MN 55063 - 417-559-3892
<https://gumicampusa.com>

HINCKLEY/PINE CITY FLAMES SNOWMOBILE CLUB

24820 Main Street
Pine City MN 55063
www.hpcflames.com

JIM JORDAN CHAPTER, MDHA

PO Box 324
Hinckley MN 55037
www.mndeerhunters.com

KNIGHTS OF COLUMBUS #2357

Pine City MN 55063

PINE AREA LIONS

PO Box 292
Pine City MN 55063

PINE CITY AREA HISTORY ASSOCIATION

315 Main Street South
Pine City MN 55063 - 320-322-9208
<http://pinecityhistory.com>

PINE CITY BEYOND THE YELLOW RIBBON

885 7th Street SW
Pine City MN 55063 - 320-629-7541
www.pinecitybyr.com

PINE CITY BLUE STAR MOMS

PO Box 258
Pine City MN 55063 - 763-244-0450

PINE CITY CIVER CENTER ASSOCIATION

1225 Main Street South
Pine City MN 55063 - 320-629-6995

PINE CITY FARMERS MARKET

315 Main Street South
Pine City MN 55063

PINE CITY LIONS CLUB

PO Box 295
Pine City MN 55063

PINE COUNTY AGRICULTURAL SOCIETY

Pine City MN 55063
<http://www.pinecountyfair.com>

PINE DRAGONS PTO

700 6th Ave SW
Pine City MN 55063

PINE EMS

Pine City MN 55063

POKEGAMA LAKE ASSOCIATION

12965 Lake Line Rd
Pine City MN 55063
www.pokegamalakeassociation.com

PREGNANCY RESOURCE CENTER

315 Main Street South, B20
Pine City MN 55063 - 320-629-2792
<http://www.pregornot.org>

SNAKE RIVER VALLEY CONSERVATION CLUB

Pine City MN 55063

COMPUTER SERVICES

PRO-TECH PC SOLUTIONS

Pine City MN 55063 - 320-629-2721
<https://go.thryv.com/site/computerguy>

CONSTRUCTION SERVICES

ALL SEASONS SERVICES, LLC

24656 St. Croix Rd
Pine City MN 55063 - 320-629-0112

ANDERSON ELECTRIC OF PINE CITY

12750 Pokegama Lake Rd
Pine City MN 55063 - 320-629-3133

BEST RENTALS, INC.

1350 Hillside Ave SW
Pine City MN 55063 - 320-629-2585

C&A CAMPBELL CONSTRUCTION

PO Box 187
Pine City MN 55063 - 320-629-4674
<http://www.campbell-constructionllc.com>

77

DALE'S HEATING & APPLIANCE, LLC

815 Main Street South
Pine City MN 55063 - 320-629-3531
<http://www.dalesheatingandappliance.com>

DOENZ EXCAVATING

10600 Country Drive
Pine City MN 55063 - 320-629-3819

ENVIRO SHIELD SEALCOATING

10475 Park Circle
Pine City MN 55063 - 763-482-9305
<http://www.envirosealcoating.com>

HOPKINS SAND & GRAVEL INC.

24865 Rosewood Lane
Beroun MN 55063 - 320-629-2522
www.hopkinsgravel.com

JEFF'S OUTDOOR SERVICES

210 5th Avenue SE
Pine City MN 55063 - 320-629-4990
<http://www.jeffsoutdoorservices.com>

JONES CONSTRUCTION SERVICES

21835 County Highway 61
Pine City MN 55063 - 320-629-0112

K & K CONCRETE & MASONRY

Pine City MN 55063 - 612-390-7303

LOG CREEK BUILDERS, LLC

20390 Contrast Rd
Pine City MN 55063 - 612-720-7683

MALLARD MECHANICAL

16306 Eagle Ridge Circle
Pine City MN 55063 - 612-433-1411
<http://www.mymallardmechanical.com>

MARK HAUG CONSTRUCTION

11754 Fairway Rd SW
Pine City MN 55063 - 320-629-6607
<http://www.markhaugconstruction.com>

MARK OSTEDYK PAINTING & DRY-WALL LLC

11244 Brunswick Rd
Pine City MN 55063 - 320-629-6641

PREFER PAVING

PO Box 709
Rush City MN 55069 - 320-358-3539
<https://preferpavinginc.net/>

SPRING VALLEY LOG WORKS LLC

12348 Spring Valley Lane
Pine City MN 55063 - 763-439-1999
www.springvalleylogworks@gmail.com

TRUE NORTH HEATING & AIR

16981 Edgewater Rd NE
Pine City MN 55063 - 320-629-0007
www.truenorthheatingandair.com

DENTAL CARE**EMBRACE ORTHODONTICS**

705 4th Avenue SW
Pine City MN 55063 - 320-629-9944
www.embracecmn.com

OAK PARK DENTAL

505 Johnson Ave SE
Pine City MN 55063 - 320-629-2282
www.oakparkdentalclinic.com

PINE CITY FAMILY DENTAL

1105 Hillside Ave SW
Pine City MN 55063 - 320-629-2789
<http://www.pinecityfamilydental.com>

DIRECT SALES**NORWEX**

Pine City MN 55063 - 320-224-3788
<http://www.lindadefenbaugh.norwex.biz>

PAPERPIE

Independent Brand Partner Angie Kemen
Pine City MN 55063 - 612-390-5998
<https://t2449.paperpie.com>

SCENTSY

Pine City MN 55063 - 320-298-0022
<https://joannggray.scenttsy.us/>

YOUNG LIVING ESSENTIAL OILS

Pine City MN 55063 - 320-629-3119
www.myyl.comcbloom

EDUCATION**CHILDREN OF JOY PRESCHOOL**

825 Golf Ave SW
Pine City MN 55063 - 320-629-2985

GROWING IN GRACE PRESCHOOL

410 Main Street South
Pine City MN 55063 - 320-629-3683

PINE CITY PUBLIC SCHOOLS

1400 Main Street South
Pine City MN 55063 - 320-629-4000
<http://www.isd578.org>

PINE TECHNICAL & COMMUNITY COLLEGE

900 4th Street SE
Pine City MN 55063 - 320-629-5100
www.pine.edu

EMPLOYMENT SERVICES**PHASE-INDUSTRIES**

PO Box 126
Sandstone MN 55072 - 320-245-2246
<http://www.phase-industries.org>

FINANCIAL SERVICES**EDWARD JONES**

950 Main Street South, Unit 3
Pine City MN 55063 - 320-438-1007
<https://www.edwardjones.comus-en/financial-advisor/sydney-nelson>

FRANDSEN INVESTMENT SERVICES

560 3rd Avenue SE
Pine City MN 55063 - 320-629-7713
<https://www.frandsenbank.cominvestments>

NEW AMERICAN FUNDING

38880 Oakview Avenue
North Branch MN 55056 - 612-685-0578
<http://nafhomes.comchadfour>

STAGES FINANCIAL GROUP

1015 Hillside Ave SW, Suite 3
Pine City MN 55063 - 320-629-4997
<http://www.ameriprisedadvisors.comashley.j.hartman>

FOOD & BEVERAGE**AMERICAN LEGION POST 51**

525 Main Street North
Pine City MN 55063 - 320-629-2021

BERCHIN'S A&W RESTAURANT

820 Main St S
Pine City MN 55063 - 320-629-3955
<http://www.awrestaurants.com>

BOONDOGGLE WINERY

31575 St. Croix Rd
Pine City MN 55063 - 612-390-1369

CABINA CAFFE

620 8th Ave SW
Pine City MN 55063 - 320-629-5982
www.cabinacaffe.com

PINE CITY DAIRY QUEEN

1000 Main Street South
Pine City MN 55063 - 320-629-3660

FLOPPY CRAPPIE LAKESIDE PUB

10762 Lakeview Shore Drive
Pine City MN 55063 - 320-322-4020
www.floppycrappielakesidepub.com

FROGGY'S BAR & GRILL

209 5th Street SE
Pine City MN 55063 - 320-629-9917

THE GARAGE BAR & GRILL

755 Main Street South
Pine City MN 55063 - 320-629-8108

KFC PINE CITY

1280 Hillside Ave SW
Pine City MN 55063 - 320-629-3760
www.kfc.com

LAKE APPEIL, LLC

13646 Muffies Lane
Grasston MN 55030 - 763-639-5521

MAXWELL'S SOUTHERN BBQ & MEATS, LLC

515 8th Avenue SE
Pine City MN 55063 - 320-629-0063
www.maxwellssouthernbbq.com

PDI FOODS, LLC

1450 8th Street NW
Pine City MN 55063
<http://www.mcdonalds.com>

MOM'S PARKSIDE CAFE

223 5th Street SE
Pine City MN 55063 - 320-629-4676

ONCE A DAY DESSERTS

315 6th Avenue SE
Pine City MN 55063 - 320-438-4161

PIZZA HUT

1005 Hillside Ave SW
Pine City MN 55063 - 320-629-2525

PIZZA PUB OF PINE CITY, LLC

500 3rd Ave SE
Pine City MN 55063 - 320-629-6468
<https://www.mypizzapub.compine-city>

ROCK CREEK CAFE & MEAT MARKET

3923 State Hwy 70
Pine City MN 55063 - 320-629-4862
<http://heidellbergerllc.comservices/>

SAPSUCKER FARMS

2751 215th Avenue
Mora MN 55051 - 320-679-9195
<https://sapsuckerfarms.com>

THREE TWENTY BREWING CO.

135 5th Street SE
Pine City MN 55063 - 320-322-1237
<http://www.threetwentybrewing.com>

THE VILLAGE BAR & GRILL

245 3rd Street SE
Pine City MN 55063 - 320-629-1066

GOVERNMENT**CITY OF PINE CITY**

1015 Hillside Avenue SW
Pine City MN 55063 - 320-629-2575
<https://pinecity.govoffice.com>

PINE COUNTY

635 Northridge Drive
Pine City MN 55063 - 320-591-1400
<http://www.co.pine.mn.us>

HEALTH & WELLNESS**ANYTIME FITNESS**

925 Main Street South
Pine City MN 55063 - 320-629-8987
www.anytimefitness.com

CRYSTAL WILLIAMS MASSAGE & SKIN CARE

8285 Birchview Rd
Grasston MN 55030 - 320-591-8232
www.cwilliamsmassage.com

MEMORIAL BLOOD CENTERS

5115 Burning Tree Rd, Suite 308
Duluth MN 55811 - 218-723-8080
<http://www.mbc.org>

MOMS ON THE RUN, PINE CITY

Pine City MN 55063 - 320-260-4447
<https://www.momsontherun.compinecity.html>

PINE COUNTY HISTORICAL SOCIETY

P.O. Box 123
Askov MN 55704-0123 - 320-838-1607

HOSPITAL**M HEALTH FAIRVIEW LAKES HOSPITAL**

5200 Fairview Blvd
Wyoming MN 55092 - 651-982-7000
www.mhealthfairview.org

WELIA HEALTH - MORA HOSPITAL

301 Highway 65 South
Mora MN 55051 - 320-679-1212
<http://www.weliahealth.org>

INDIVIDUALS**BONNIE MENIGO**

Pine City MN 55063

FRANK CHRISTOPHERSON

Grantsburg WI

LARA SMETANA

Pine City MN 55063

MIKE GAINOR

Pine City MN 55063

NATHAN JOHNSON

Minneapolis MN

INSURANCE**AMERICAN FAMILY INSURANCE**

245 Main Street South
Pine City MN 55063 - 320-629-2927
<http://www.robsanvik.com>

FARMERS INSURANCE

700 Commerce Dr
Woodbury MN 55125
320-322-8882
<https://agents.farmers.commn/woodbury/anthony-olson>

PINE INSURANCE AGENCY

1300 Northridge Drive NW
Pine City MN 55063 - 320-629-2515
www.pineagency.us

TOWN & COUNTRY INSURANCE

202 Main Street East
Hinckley MN 55037 - 320-384-7423
www.townandcountry-ins.com

LEGAL SERVICES**CABAK LAW, LLC**

243 Main Street South
Pine City MN 55063 - 320-629-2529
<http://www.cabaklaw.com>

LEDIN & HOFSTAD

600 Hillside Ave SW, Suite C
Pine City MN 55063
320-629-7537
www.ledinandhofstad.com

SPEAR & SWANSON LAW OFFICE

615 3rd Ave SW
Pine City MN 55063 - 320-629-7586
<https://www.spearandswanson.com>

TROTH LAW, LLC

210 Main Street South
Pine City MN 55063 - 320-629-2727
www.trothlaw.com

LODGING

CROSS LAKE ESTATES, LONG & SHORT TERM RENTALS

Pine City MN 55063 - 507-259-1490
www.crosslakeestates.com

POKAGAMA LAKE CABIN RENTAL

Pine City MN 55063
https://taplink.cc/pokagamalake.cabin.rental.mn

MANUFACTURING

BROEKEMA BELTWAY USA INC.

1108 Holstein Drive NE
Pine City MN 55063 - 320-629-3900
http://www.broekema-usa.com

CRYSTAL SPRINGS ICE

25503 Russel Rd
Pine City MN 55063 - 320-629-6267

DAKA CORPORATION

955 Industrial Street NE
Pine City MN 55063 - 320-629-6737
http://www.dakacorp.com

MINPACK, INC.

400 2nd St. SE
Pine City MN 55063 - 320-629-8200
http://www.minpack.com

MEDICAL CLINIC

M HEALTH FAIRVIEW NORTH BRANCH CLINIC

5366 386th Street
North Branch MN 55056 - 651-982-7000
www.mhealthfairview.org

WELIA HEALTH - PINE CITY CLINIC & PHARMACY

1425 Main Street South
Pine City MN 55063 - 320-629-7505
http://www.weliahealth.org/

MENTAL HEALTH SERVICES

EMPOWER RECOVERY SERVICES

645 3rd Avenue SW
Pine City MN 55063 - 320-629-0059
http://www.empowerrecoveryservices.org

THERAPEUTIC SERVICES AGENCY, INC.

220 Railroad Street SE
Pine City MN 55063 - 320-629-7600
http://www.hoperealized.com

PET SERVICES

APPLE BLOSSOM KENNELS

Braham MN 55006 - 320-209-1788
www.appleblossomkennels.com

WAPITI LABS, INC.

34381 Majestic Pine Drive
Sturgeon Lake MN 55783 - 651-237-4051
http://wapitilabsinc.com

PHOTOGRAPHY

GROSS PRODUCTIONS

Pine City MN 55063 - 320-629-6699
https://grossproductions.com

STUDIO NINE PORTRAITS

55239 Forest Blvd
Rush City MN 55069 - 763-221-4371
http://www.studionineportraits.com

PROPERTY MANAGERS

RIVERVIEW ESTATES HOMEOWNERS ASSOCIATION

PO Box 181
Pine City MN 55063

REAL ESTATE AGENTS

COLDWELL BANKER REALTY, SHONA HUGHES

4801 Hwy 61 N, Suite 100
White Bear Lake MN 55110 - 651-252-8645

COLDWELL BANKER RESULTS, JAN CARL

885 7th Street SW
Pine City MN 55063 - 320-629-7541
www.cbresults.com

COLDWELL BANKER RESULTS, LOREAL LINDSTROM

885 7th Street SW
Pine City MN 55063 - 320-629-6855
http://www.cbresults.com

HOMES PREFERRED REALTY

700 Main Street South
Pine City MN 55063 - 651-674-0440
http://www.realhomepro.com

KELLER WILLIAMS PREMIER REALTY, HAELEY NEWMAN

217 Main Street South
Pine City MN 55063 - 320-469-6868

LOCAL REALTY, INC.

Pine City MN 55063 - 320-279-0087
http://www.localrealtymn.com

REALTY EXECUTIVES

6349 Main Street
North Branch MN 55056 - 651-428-5108
www.marybecksell.com

REAL ESTATE RELATED SERVICES

A & I HOME SERVICES, INC.

Pine City MN 55063 - 651-353-2825
www.compcheckmn.com

PINE COUNTY ABSTRACT COMPANY

615 3rd Ave SW
Pine City MN 55063 - 320-629-2624
www.pinecountyabstract.com

RECREATION

BULRUSH GOLF CLUB

605 Brookside Parkway
Rush City MN 55069 - 320-358-1050
https://www.bulrushgolfclub.com

CHUCKER'S BOWL & LOUNGE

1270 W 3rd Street
Rush City MN 55069 - 320-358-0879
www.chuckersbowl.com

OSPREY WILDS ENVIRONMENTAL LEARNING CENTER

54165 Audubon Drive
Sandstone MN 55072 - 320-245-2648
www.ospreywilds.org

PINE CITY COUNTRY CLUB

10413 Golf Course Rd
Pine City MN 55063 - 320-629-3848
www.pinecitycc.com

PINE CITY YOUTH HOCKEY ASSOCIATION

PO Box 25
Pine City MN 55063
https://pinecityyouthhockey.pucksystems.com

SNAKE RIVER OUTFITTERS MN, LLC

21776 Aubrecht Shores Drive
Pine City MN 55063 - 612-718-0125
http://www.snakeriveroutfittersmn.com

SPARX DANCE STUDIO

1300 Northridge Drive NW, Unit #5
Pine City MN 55063 - 320-629-9995
http://www.sparxdance.com

WINGS NORTH HUNTING CLUB

19379 Homestead Rd
Pine City MN 55063 - 320-629-4868
www.wingsnorth.org

RETAIL STORE

3RD AVENUE GIFTS

505 3rd Ave SE
Pine City MN 55063
www.pinecenter.org

THE BOOKSTORE

253 5th Street SE
Pine City MN 55063 - 320-322-5124
http://TheBookstorePineCity.com

CAREY'S COMMUNICATIONS/RADIO SHACK

160 Evergreen Square SW
Pine City MN 55063 - 320-629-6808
www.careyscommunications.com

FAMILY PATHWAYS

800 Main Street South
Pine City MN 55063 - 320-629-3878
http://www.familypathways.org/

HERITAGE HOME CREATIONS

23385 Freeway Blvd
Pine City MN 55063 - 320-333-7210
https://phase-industries.org/

LEE'S PRO SHOP, INC.

625 Henriette Rd NW
Pine City MN 55063 - 320-629-6428
www.leesproshop.com

MIDWEST CHARM

235 Main St S
Pine City MN 55063 - 320-390-2640
www.midwestcharm.co

MOHR PARTS & SUPPLIES - PINE CITY NAPA

505 Main Street South
Pine City MN 55063 - 320-629-2527
http://www.naponline.com

MORE THAN SPROUTS LLC

245 5th Street SE
Pine City MN 55063 - 320-629-3969
http://www.morethansprouts.com

NEW HORIZON THRIFT STORE

870 Main Street South
Pine City MN 55063 - 320-279-0927

PINE CITY MEDICAL SUPPLY

540 Main Street South
Pine City MN 55063 - 320-629-1149
http://www.pinecitymedicalsupply.com

SAUSER'S OUR OWN HARDWARE

229 5th Ave SE
Pine City MN 55063 - 320-629-3437

STAN'S EQUIPMENT CENTER

1025 Main St N
Pine City MN 55063 - 320-629-6193
http://www.stansequip.com

THE FLOWER BOX

241 Main St S
Pine City MN 55063 - 320-629-2045
www.flowerboxpinecity.com

VOYAGEUR BOTTLE SHOP

205 Main Street South
Pine City MN 55063 - 320-629-2020
http://pinecity.govoffice.com

WALMART

950 11th Street SW
Pine City MN 55063 - 320-629-5845
http://www.walmart.com

SECURITY

PARSECURITY INC.

315 Main Street South
Pine City MN 55063 - 763-571-4816
www.parsecurity.com

SENIOR SERVICES

ADARA HOME HEALTH

10141 University Ave NE
Blaine MN 55434 - 763-792-9471
http://www.adarahomehealth.com

NORTHERN PINES ASSISTED LIVING

1305 8th Street SW
Pine City MN 55063 - 320-629-7272
http://www.northernpinesassisted.com

SOPHIE'S MANOR ASSISTED LIVING, INC.

17500 Ranch Drive
Pine City MN 55063 - 320-629-2064
www.sophiesmanor.com

SIGNS

D B SIGNS

30567 Crooked River Rd
Pine City MN 55063 - 320-629-8919
http://www.dbsigns.biz

TITLE INSURANCE & CLOSING AGENTS

A-1 TITLE, LLC

210 Main Street South
Pine City MN 55063 - 320-629-2727
www.trothlaw.com

@ TITLE

PO Box 550
Hinckley MN 55037 - 952-767-0321
https://closeattitle.com

SIGNATURES CLOSING & TITLE, INC.

205 5th Street SE
Pine City MN 55063 - 320-629-5515
www.signaturesclosing.com

TRANSPORTATION

ARROWHEAD TRANSIT/AEOA

702 Third Ave S.
Virginia MN 55792 - 218-741-0724
http://www.arrowheadtransit.com

PINE CITY BUS SERVICE, 4.0 TRANSPORTATION

1225 Airwaves Rd NE
Pine City MN 55063 - 320-629-2032
http://www.fourpointo.com

UTILITIES

EAST CENTRAL ENERGY

411 N Main Street
Braham MN 55006 - 800-254-7944
http://www.eastcentralenergy.com

GENESIS WIRELESS

205 2nd St SW
Braham MN 55006 - 320-396-2990
genesiswireless.com

MINNESOTA ENERGY RESOURCES

155 Main Street South
Pine City MN 55063 - 800-889-9508
http://www.minnesotaenergyresources.com

TALON SANITATION

PO Box 199
Pine City MN 55063 - 320-629-1133

VETERINARIANS

PINE CITY ANIMAL HOSPITAL

917 Main Street South
Pine City MN 55063 - 320-629-7591
http://www.pinecityanimalhospital.com



SANDSTONE CHAMBER OF COMMERCE

sandstonechamber.org | (320) 630-4477 | sandstonechamber@yahoo.com

2023 MEMBERS LIST

KC COMPANIES

Golden Horizons Assisted Living
PO Box 379
Pequot Lakes, MN 56472

EDWARD JONES

Sydney Shaye Nelson
Financial Advisor
950 Main St. S. Unit 3
Pine City, MN 55063
Bus. 320-438-1007
Fax. 877-319-9316
Sydney.nelson@edwardjones.com
edwardjones.comSydney Nelson

TROTH LAW, LLC

www.bjerkelawoffices.com
Michael L. Bjerke
mike@bjerkelawoffices.com

A-1 TITLE, LLC

www.atitlellc.com
mike@atitlellc.com

ANYTIME FITNESS

418 Main St.
Sandstone, MN 55072
320-245-3191
steph.haase@anytimefitness.com
www.anytimefitness.com

SANDSTONE HEALTH CARE CENTER

109 Court Ave S
Sandstone, MN 55072
320-245-3150
Fax: 320-245-3177

SANDSTONE HISTORY & ART CENTER

Kristi Sellwood
9825 Upper 205th St. West
Lakeville, MN 55044
952-913-5080
kristisellwood@gmail.com
www.sandstonehistorycenter.com

NORTHWOODS EMBROIDERY

55991 Williams Lane
Sandstone, MN 55072
320-245-3166
nwemb@copper.net
www.nwembroidery.com

NORTHVIEW BANK

www.northviewbank.com
510 Main St
Sandstone, MN 55072
320-245-5261

NORTH PINE INSURANCE

www.northpineinsurance.com
410 Main St
Sandstone, MN 55072
320-245-5262

SANDRA SANDWICK

320-245-2849

SANDSTONE LANES

www.facebook.comsandstonelanes
406 Main St
Sandstone, MN 55072
320-245-2237

CITY OF SANDSTONE

www.sandstone.govoffice.com
Peter Spartz - Mayor
Kathy George - City Administrator
119 4th St
Sandstone, MN 55072
320-245-5241

SANDSTONE AREA GOLF COURSE

www.sandstonegolf.com
343 Lark St
Sandstone, MN 55072
SAGC@scicable.com
320-245-0471

MEMBERS COOPERATIVE CREDIT UNION

305 Lundorff Drive
Sandstone, MN 55072
320-245-5251
www.membersccu.org

CABAK LAW LLC

John Cabak
243 Main St S
Pine City, MN 55063
320-629-2529

PHASE

Joyce LaMere
PO Box 126
320-245-2246
www.pinehab.org

210 GALLERY AND ART CENTER

www.osacmn.org
Cheryl Burns
PO Box 535
Sandstone, MN 55072
320-216-7638

UNITED COUNTRY REAL ESTATE

60519 State Hwy. 23
Finlayson, MN 55735
320/245-2502
unitedcountryMN@gmail.com
www.UCMinnesota.com

NORTHSTAR MEDIA INC.

www.northstarmedia.com
930 Cleveland St S,
Cambridge, MN 55008
763-689-1181

ASCERTAIN RECOVERY CENTER

www.ascertainrecovery.org
413 Commercial Ave N
Sandstone, MN 55072
320-245-9966

SANDSTONE ACE HARDWARE

Matt & Emily Gebhart
218 Main St,
Sandstone, MN 55072
320-245-2235

KEN AND ARDIE JOHNSON

12375-104th Place
Finlayson, MN 55735
pinelakeblessings@frontier.com

DIAMOND DANCE STUDIO

Madeline Jahnz
8093 Hwy. 61
Willow River, MN 55795
Mailing Address: 13535 Dahl Rd.
Hinckley, MN 55037
218-289-6888
diamonddancemn.com
www.diamonddancemn@gmail.com

ESSENTIA HEALTH

Leah Jarvis
705 Lundorff Drive
Sandstone, MN 55072
leah.jarvis@essentiahealth.org
www.essentiahealth.org

CHRIS' FOOD CENTER

320 State Hwy. 123
Sandstone, MN 55072
320-245-2229

SANDSTONE VICTORY

325 Quarry Place
PO Box 588
Sandstone, MN 55072
320-245-0081

QUARRY KIDS CHILD CARE CENTER

Manager-Mindy Leger
132 Oriole St. E
Sandstone, MN 55072
320-292-4243
quarrykidscccc@gmail.com
www.facebook.com
quarrykidscccc

LEZLIE SAUTER

Economic Development
Coordinator, Pine Co.
635 Northridge Dr. NW
Pine City, MN 55063
320-591-0019
lezlie.sauter@co.pine.mn.us
www.co.pine.mn.us

EAST CENTRAL SCHOOL SD #2580

Contact: Andrew Almos
61085 State Hwy. 23
Finlayson, MN 55735
320-245-2289
Fax: 320-245-6159
Aalmos@eastcentral.k12.mn
www.eastcentral.k12.mn.us

80



HINCKLEY CHAMBER OF COMMERCE

2023 MEMBERS LIST

ACCOMMODATIONS

CROOKED CREEK RETREAT

40564 Crooked Creek Road
Hinckley, MN 55037
(651) 285-1865
info@crooked-creek-retreat.com

GRAND CASINO

777 Lady Luck Lane
Hinckley, MN 55037
(800) HOTEL 17

PATHFINDER VILLAGE

49200 MN-48
Hinckley, MN 55037
(320) 384-7985

ADVERTISING/MEDIA

KETTLE RIVER GRAFIX

114 4th Street
Sandstone, MN 55072
(320) 245-0232

NORTH PINE COUNTY NEWS

PO Box 310
Hinckley, MN 55037
(320) 384-6188

STARMARKER MARKETING

43987 County Hwy 61
Hinckley, MN 55037
(218) 366-9179

WCMP RADIO

15429 Pokegama Lake Rd
Pine City, MN 55063
(320) 629-7575

AUTOMOTIVE

AUTO VALUE

204 Old Hwy 61
Hinckley, MN 55037
(320) 384-6195

JB'S WELDING & SMALL ENGINE

42542 Iron Horse Road
Hinckley, MN 55037
(320) 492-7570

KEITH'S TOWING

2026 Old Hwy 61 N
Hinckley, MN 55037
(320) 384-7664

KOPPY MOTORS

320 Fire Monument Rd
Hinckley, MN 55037
(320) 384-6300

NORTH BOUND COLLISION

821 N Hwy 61
Hinckley, MN 55037
(320) 384-0774

SLIM'S SERVICE

405 Old Hwy 61
Hinckley, MN 55037
(320) 384-6193

TOBIES RESTAURANT

404 Fire Monument Rd
Hinckley, MN 55037
(320) 384-6174

ATTORNEYS

CABAK LAW, LLC

243 Main Street S
Pine City, MN 55063
(320) 629-2529

LEDIN, HOFSTAD, TROTH, & FLEMING LTD

539 Main Street
Pine City, MN 55063
(320) 629-7537

COMMUNITY/ CIVIC GROUPS

BLUE STAR MOMS- PINE CITY

PO Box 258
Pine City, MN 55063
Braham Event Center
655 8th Street SW
Braham, MN 55006
(320) 396-3177
info@brahamcenter.org

BRAHAM EVENT CENTER

655 8th Street SW
Braham, MN 55006
(320) 396-3177
info@brahamcenter.org

CAMP NATHANAEL

39564 Wilbur Ln
Hinckley, MN 55037
(888) 869-4334
info@campnathanael.com

CITY OF HINCKLEY

106 1st Street SE
Hinckley, MN 55037
(320) 384-7491
cityadmin@cityofhinckley.com

EAST CENTRAL REGIONAL LIBRARY

111 Dellwood Street N
Cambridge, MN 55008
(320) 384-6351

HINCKLEY ATHLETIC ASSOCIATION

200 5th Street NE
Hinckley, MN 55037
(320) 384-7309
hinckleyknights@gmail.com

HINCKLEY-FINLAYSON SCHOOLS

PO Box 308
Hinckley, MN 55037
(320) 384-6277
bmasterson@isd2165.org

HINCKLEY FIRE MUSEUM

106 Old Hwy 61 S
Hinckley, MN 55037
(320) 384-7338
info@hinckleyfiremuseum.com

HINCKLEY FIRE RELIEF

404 Lawler Ave S
Hinckley, MN 55037
(320) 237-6901
jodux@hotmail.com

HINCKLEY LION'S CLUB

PO Box 312
Hinckley, MN 55037
(320) 384-0497

HINCKLEY PINE CITY FLAMES SNOWMOBILE CLUB

PO Box 311
Pine City, MN 55063
(320) 282-9155
geigerkristy@yahoo.com

IOOF #154

104 Old Hwy 61 N
Hinckley, MN 55037
(320) 384-6969
jlmcferran@q.com

OSPREY WILDS

54165 Audubon Rd
Sandstone, MN 55072
(320) 245-2648
info@ospreywilds.org

PINE TECHNICAL & COMMUNITY COLLEGE

900 Fourth Street SE
Pine City, MN 55063
(320) 629-5100
info@pine.edu

ST. CROIX STATE PARK

30065 St Croix Park
Hinckley, MN 55037
Stcroix.statepark@state.mn.us

ST. PAUL LUTHERAN CHURCH

402 2nd St NW
Hinckley, MN 55037
(320) 384-6267

TREEHOUSE - SANDSTONE

PO Box 34
Sandstone, MN 55072
(763) 486-3297
area.director@
treehousesandstone.org

ENTERTAINMENT/ RECREATION

CAMP NATHANAEL

39564 Wilbur Ln
Hinckley, MN 55037
(888) 869-4334
info@campnathanael.com

DIAMOND DANCE STUDIO

8093 Hwy 61
Willow River, MN 55795
(218) 372-8427
diamonddancemn@gmail.com

GRAND CASINO

777 Lady Luck Lane
Hinckley, MN 55037
(800) HOTEL 17
GRContactGCH@grcasinos.com

GRAND CINEMA HINCKLEY

845 Weber Ave
Hinckley, MN 55037
(320) 384-7999
GrandCinemaMN@gmail.com

JIM JORDAN CHAPTER

19293 Pioneer Rd
Hinckley, MN 55037
(320) 384-6860

MESHAKWAD COMMUNITY CENTER

38043 Hinckley Road
Hinckley, MN 55037
(320) 336-0220
Robert.livingstonjr@millelacs-
band.com

MINNESOTA GOOSE GARDEN

3104 355th Ave
Sandstone, MN 55072
(320) 390-2323
suerodfoss@gmail.com

OSPREY WILDS

54165 Audubon Rd
Sandstone, MN 55072
(320) 245-2648
info@ospreywilds.org

ST. CROIX STATE PARK

30065 St Croix Park
Hinckley, MN 55037
Stcroix.statepark@state.mn.us

EVENT/LOCATION SERVICES

BRAHAM EVENT CENTER

655 8th Street SW
Braham, MN 55006
(320) 396-3177
info@brahamcenter.org

CITY OF HINCKLEY

106 1st Street SE
Hinckley, MN 55037
(320) 384-7491
cityadmin@cityofhinckley.com

CROOKED CREEK RETREAT

40564 Crooked Creek Road
Hinckley, MN 55037
(651) 285-1865
info@crooked-creek-retreat.com

MESHAKWAD COMMUNITY CENTER

38043 Hinckley Road
Hinckley, MN 55037
(320) 336-0220
Robert.livingstonjr@
millelacsband.com

OSPREY WILDS

54165 Audubon Rd
Sandstone, MN 55072
(320) 245-2648
info@ospreywilds.org

TOBIES RESTAURANT

404 Fire Monument Rd
Hinckley, MN 55037
(320) 384-6174

FINANCIAL SERVICES

KROSCHER AGENCY, LLC

208 Fire Monument Rd
Hinckley, MN 55037
(320) 384-6334
dkroschel@farmersagent.com

MEMBERS COOPERATIVE CREDIT UNION

305 Lundorff Drive
Sandstone, MN 55072
(320) 245-5251

NORTHVIEW BANK

203 Old Hwy 61
Hinckley, MN 55037
(320) 384-0445

PINE TAX & ACCOUNTING

103 Fire Monument Rd
Hinckley, MN 55037
(320) 384-6946
office@pinetax.com

PROGRESSIVE LENDING SOLUTIONS

2277 MN-36
St Paul, MN 55113
(651) 636-2840
jbecker@progressivels.com

WOODLANDS

NATIONAL BANK
122 Main Street
Hinckley, MN 55037
(320) 384-6191

FOOD/BEVERAGE

BEAR CREEK TAVERN

39109 State Hwy 48
Hinckley, MN 55037
(320) 384-6705

DAGGETT'S FRESH FOOD

104 1st Street NE
Hinckley, MN 55037
(320) 384-6185

GRAND CASINO

777 Lady Luck Lane
Hinckley, MN 55037
(800) HOTEL 17
GRContactGCH@grcasinos.com

GRAND CINEMA HINCKLEY

845 Weber Ave
Hinckley, MN 55037
(320) 384-7999
GrandCinemaMN@gmail.com

HARDEES

40 Fire Monument Road
Hinckley, MN 55037
(320) 384-6098

SUBWAY

101 Grindstone Ct
Hinckley, MN 55037
(320) 384-6184

TOBIES

404 Fire Monument Rd
Hinckley, MN 55037
(320) 384-6174

HEALTH/WELLNESS

ANYTIME FITNESS – SANDSTONE

418 Main Street
Sandstone, MN 55072
(320) 245-3191
sandstonemn@anytimefitness.com

ELDERWOOD OF HINCKLEY

710 Spring Lane
Hinckley, MN 55037
(320) 384-7373

ESSENTIA HEALTH SYSTEM

109 Court Ave S
Sandstone, MN 55072
(320) 245-3249

GRAND CASINO

777 Lady Luck Lane
Hinckley, MN 55037
(800) HOTEL 17
GRContactGCH@grcasinos.com

LOVE THE JOURNEY, INC

204 Fire Monument Road
Hinckley, MN 55037
(320) 384-6362
office@lovethejourneymn.com

MESHAKWAD COMMUNITY CENTER

38043 Hinckley Road
Hinckley, MN 55037
(320) 336-0220
Robert.livingstonjr@
millelacsband.com

NORTHERN MINNESOTA EYE CARE

45 Lady Luck Lane
Hinckley, MN 55037
(320) 384-6361

PLUM BEHAVIORAL HEALTH SERVICES, LLC

208 Fire Monument Road
Hinckley, MN 55037
(320) 336-0036
ContactUs@plumbHS.org

THE COTTAGE IN HINCKLEY

107 1st Street NE
Hinckley, MN 55037
(507) 272-2952
fontanelfarm@gmail.com

WAPITI LABS, LLC

34381 Majestic Pine Dr
Sturgeon Lake, MN 55783
(651) 237-4051
admin@wceri.com

WHITE BEAR FOOT & ANKLE CLINIC

Dr. Christopher Phillips
45 Lady Luck Drive
Hinckley, MN 55037
(651) 426-3995
wbfaoffice@gmail.com

WELIA HEALTH

620 Sandy Lane
Hinckley, MN 55037
(320) 384-6189

HOME/GARDEN

AHR SALES & 24-HOUR SER- VICE, LLC

Hinckley, MN 55037
(218) 380-1386
ahrsales24hrs@scicable.com

AUSMUS FLOORING & FURNISHINGS

102 E. Main Street
Hinckley, MN 55037
(320) 384-6101
ausmusflooring@gmail.com

BEAVER MEADOW GARDEN CENTER

4201 Old Hwy 61 So.
Hinckley, MN 55037
(320) 384-6227
bmeadow2001@gmail.com

CITY OF HINCKLEY

106 1st Street SE
Hinckley, MN 55037
(320) 384-7491
cityadmin@cityofhinckley.com

D & E HEATING AND AIR CONDITIONING

302 Power Ave. N
Hinckley, MN 55037
(218) 380-1657
cj3161@msn.com

ELLIOTT'S LAWN CARE & LANDSCAPE

PO Box 307
Hinckley, MN 55037
(320) 630-6827
elliottslawncares.msn.com

HOPKINS SAND & GRAVEL

24865 Hwy 61
Pine City, MN 55063
(320) 629-2522
beroun@hopkinsgravel.com

MINNESOTA BACKFLOW TESTING

Hinckley, MN 55037
(218) 820-2348
minnesotabackflow@gmail.com

R & S HARDWARE, HOME, & MORE

105 1st Street SE
Hinckley, MN 55037
(320) 280-7400
randshardware@ymail.com

SCI CABLE

111 Tobies Mill Place
Hinckley, MN 55037
(320) 384-7442

INSURANCE

KROSCHER AGENCY, LLC

208 Fire Monument Rd
Hinckley, MN 55037
(320) 384-6334
dkroschel@farmersagent.com

MEMBERS COOPERATIVE CREDIT UNION

305 Lundorff Drive
Sandstone, MN 55072
(800) 296-8871

TOWN & COUNTRY INSURANCE

202 E. Main Street
Hinckley, MN 55037
(320) 384-7423
hinckley@townandcountry-ins.com

PERSONAL/ FAMILY SERVICES

ANYTIME FITNESS – SANDSTONE

418 Main Street
Sandstone, MN 55072
(320) 245-3191
sandstonemn@anytimefitness.com

BRAHAM EVENT CENTER

655 8th Street SW
Braham, MN 55006
(320) 396-3177
info@brahamcenter.org

BOLTON & MENK

2035 County Road D East
Maplewood, MN 55109
(651) 704-9970

GRAND CASINO

777 Lady Luck Lane
Hinckley, MN 55037
(800) HOTEL 17
GRContactGCH@grcasinos.com

HINCKLEY PARTY RENTAL

42542 Iron Horse Road
Hinckley, MN 55037
hinckleyparty@yahoo.com

METHVEN FUNERAL AND CREMATION SERVICES

402 S Lawler
Hinckley, MN 55037
(320) 384-6291
methvenfh@gmail.com

THE COTTAGE IN HINCKLEY

107 1st Street NE
Hinckley, MN 55037
(507) 272-2952
fontanelfarm@gmail.com

SHOPPING/ SPECIALTY RETAIL

AUSMUS FLOORING & FURNISHINGS

102 E. Main Street
Hinckley, MN 55037
(320) 384-6101
ausmusflooring@gmail.com

CLOVERDALE COUNTRY STORE

39033 Cloverdale Rd
Hinckley, MN 55037
(612) 636-2624
bearcreekcandy@gmail.com

FAMILY PATHWAYS THRIFT STORE

112 Main Street East
Hinckley, MN 55037
(320) 384-0046

GRAND CASINO

777 Lady Luck Lane
Hinckley, MN 55037
(800) HOTEL 17
GRContactGCH@grcasinos.com

R & S HARDWARE, HOME, & MORE

105 1st Street SE
Hinckley, MN 55037
(320) 280-7400
randshardware@ymail.com

TOBIES RESTAURANT

404 Fire Monument Rd
Hinckley, MN 55037
(320) 384-6174

BRAHAM EVENT CENTER

655 8th Street SW
Braham, MN 55006
(320) 396-3177
info@brahamcenter.org





Custom SWAG PRINTING

At Kanabec Publications, we'll help you find the **PERFECT CUSTOM PRINTED GIFTS** for your business branding. Whether it's a business promotion, school fundraiser, or personal project, our friendly, helpful staff gets your job done quickly and easily.

Kanabec Publications inc.
COMMERCIAL PRINTING

Call for a Quote Today! 320-679-2661
printing@moraminn.com / www.moraminn.com/printing



HOMEMADE PIZZA

Award Winning Pizza

VOTED BY MN RESTAURANT ASSOCIATION IN 1997

Dine In • Take Out • Delivery • Family Atmosphere • Arcade Games

GLUTEN FREE PIZZA

**Strong Beer, Wine
Over 20 Tap Domestic &
Craft Beers on Selection**

NEW – Axe Throwing Lane

PINE CITY 320-629-6468
HOURS:
Open Everyday at 3:00 p.m.



ROCK CREEK CAFE & MEAT MARKET

OPEN: 7 DAYS A WEEK.

Cafe Hours: 6 a.m. to 7 p.m.

320.629.4862

3914 State Hwy 70, Pine City, MN

^{17th Annual} Pine City PRCA RODEO

Friday, Sept. 1st, 2023 - 7pm (Gates open at 5pm)
Saturday & Sunday, Sept. 2nd & 3rd - 6pm (Gates open at 4pm)
Labor Day Weekend

Adults - \$20 (\$17 in Advance)

Children \$9 (\$7 Advance) 3 & Under FREE

Advance tickets sold at: Heidelberger's Rock Creek Cafe &
Meat Market, Frandsen Bank & Trust Braham and Pine City,
Larry's LP Webster WI, Voyageur Bottle Shop Pine City,
MN Equipment - Isanti

**Live music & dancing
after the rodeo**

**Family Fun for Everyone!
Start a Labor Day Weekend
Tradition!**

Heidelberger's Arena

3923 State Hwy 70, Pine City, MN 55063

320.629.1122

www.PineCityRodeo.com

Toro Totter
Cowboy Teeter Totter



85



RESTAURANTS
Call-in orders welcome



ALL AMERICAN FOOD®

Eats • Treats • Smiles

Like us on Facebook!
www.facebook.com/PineCityAW

820 MAIN ST, • PINE CITY, MN 55063

320-629-3955

**EAT BETTER
BUY MORE
SPEND LESS**



CHRIS' FOOD CENTER

VISIT OUR WEBSITE WWW.CHRISFOODCENTER.COM
TO VIEW THE WEEKLY AD

(320) 245-2229
SANDSTONE, MN

HOURS:

MONDAY - SATURDAY: 7am - 9pm

SUNDAY: 8am - 8pm



13646 Muffies Lane
Grasston, MN 55030

320.629.9979

*Located at the South
end of Pokegama Lake*

10 docks
Patio seating
Outside Bar
Family friendly
Off-Sale available
Homemade Pizza

WE NOW OFFER CATERING!



**COME BY BOAT
FROM CROSS
LAKE ON THE
SNAKE RIVER!**

FULL BAR • FULL MENU

Special occasions • Business Lunches

Less than an hour from the Cities!

Ryan - Andrea - Cheri - Peil

COME TO MAVERICKS SALOON IN THE BADLANDS OF EAST BEROUN

Check out one of our
**DAILY FOOD
SPECIALS!**



HAPPY HOUR

3PM - 6PM

Tuesday - Friday

Roll the Dice- Sweeten the Deal!

KITCHEN OPEN TIL 9PM



**29410 Beroun Crossing Rd
Pine City, MN 55063
(320) 629-6299**

www.maverickssaloon.com

Hours: Tuesday - Friday 3pm to 11pm
Sat & Sun - 9am to 11pm • CLOSING MONDAYS

- **TUESDAY:** Taco specials
- **WEDNESDAY:** Bingo, food & drink specials
- **THURSDAY:** Food & drink specials
- **FRIDAY:** Outlaw of the week, food & drink specials
- **SATURDAY:** Breakfast, food & drink specials all day
- **SUNDAY:** Breakfast, food & drink specials all day



**Mavericks Saloon
in East Beroun**



COLDWELL BANKER RESULTS

- Lake Property
- River Property
- Residential
- Commercial
- Farm/Acreage
- Hunting Land

Your Real Estate Experts
320.629.7541
CBRESULTS.COM



Jan Carl



Danyel Bonander



Loreal Lindstrom



Dan Daigle



Andy Erickson

INDEPENDENTLY OWNED AND OPERATED MEMBER OF COLDWELL BANKER RESIDENTIAL AFFILIATES, INC. LICENSED MINNESOTA BROKERAGE