



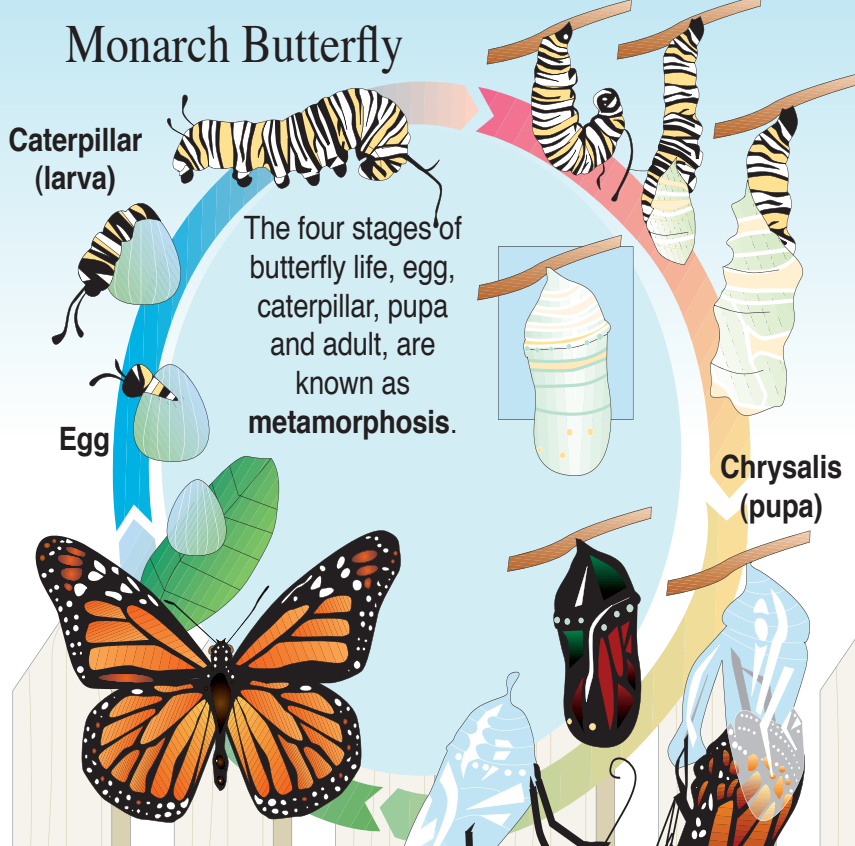
WORLD OF WONDER

Exploring the realms of history, science, nature and technology

BACKYARD BUGS

AND THEIR LIFE CYCLES

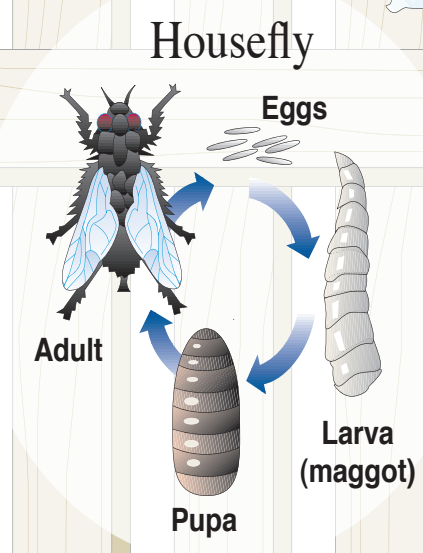
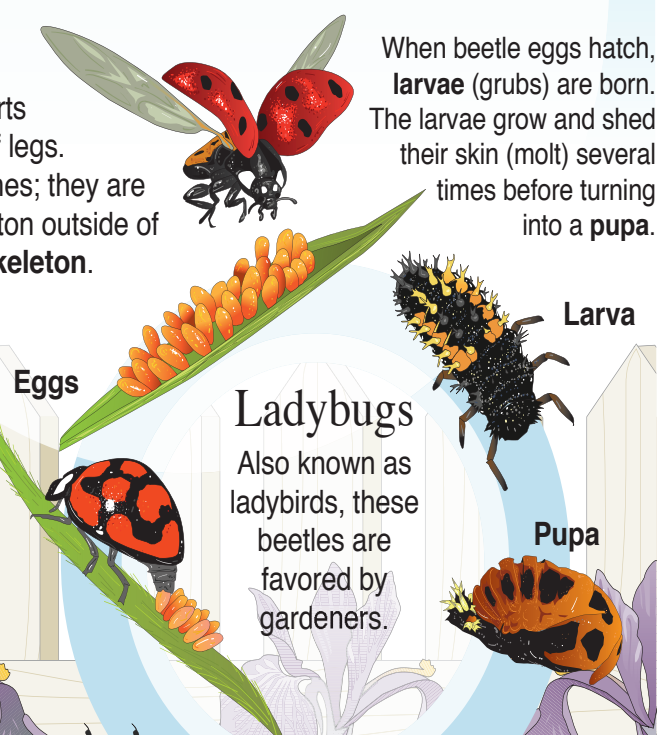
Insects make up the largest group of animals on the planet, and your neighborhood park or backyard is home to an entire world of them. Communities of termites, ants, wasps, bees, butterflies, moths, beetles and many other species can be easily observed if you take the time to look for them.



Anatomy 101

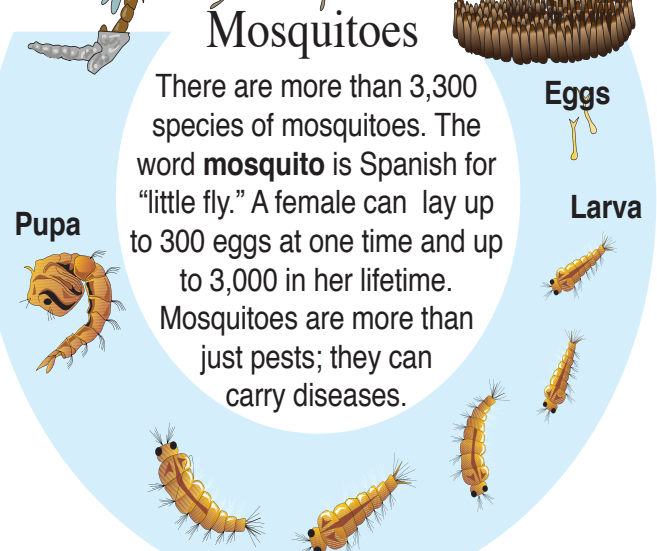
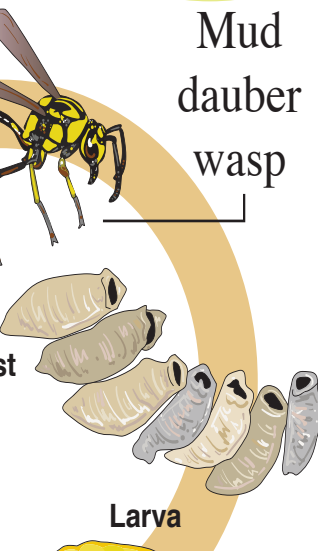
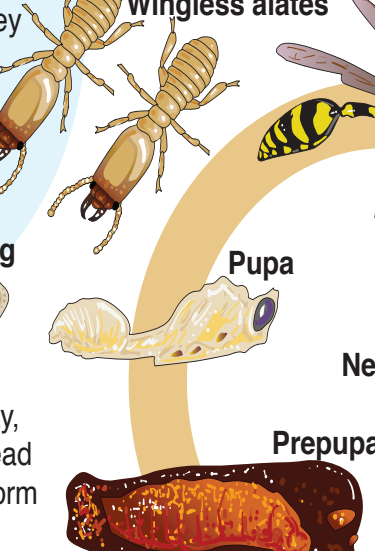
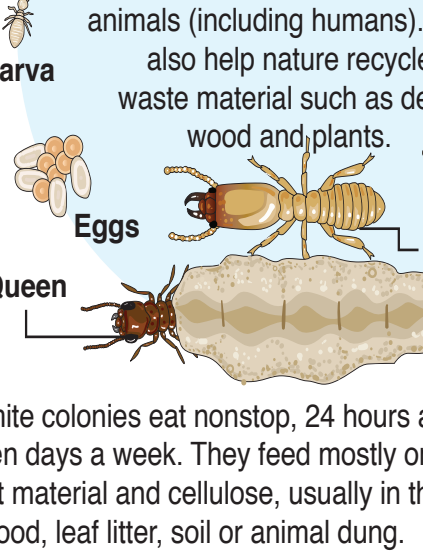
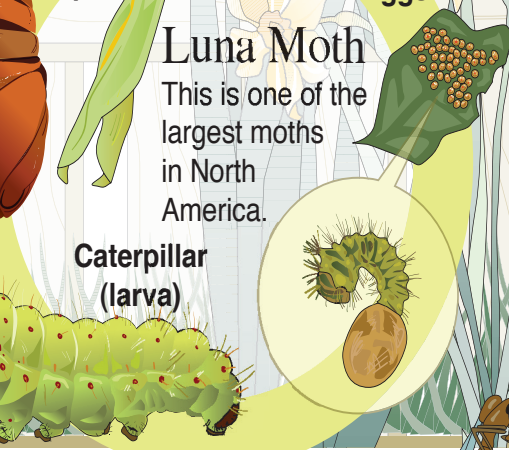
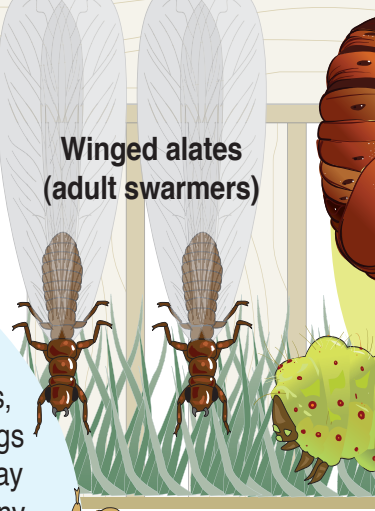
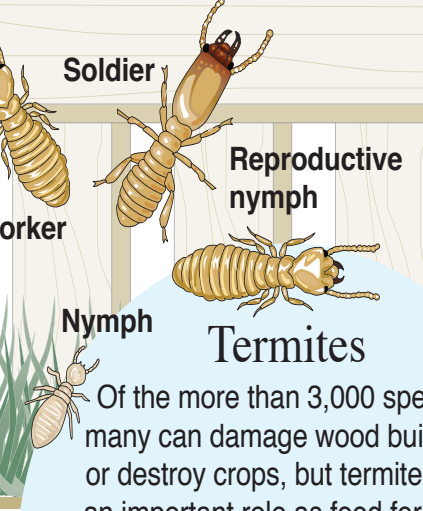
A typical insect has three parts to its body and three pairs of legs. Insects do not have backbones; they are supported by a kind of skeleton outside of their bodies, called an **exoskeleton**.

When beetle eggs hatch, **larvae** (grubs) are born. The larvae grow and shed their skin (molt) several times before turning into a **pupa**.



Ants

There more than 10,000 species of ants. They eat both plants and animals.



Termite colonies eat nonstop, 24 hours a day, seven days a week. They feed mostly on dead plant material and cellulose, usually in the form of wood, leaf litter, soil or animal dung.

There are more than 100,000 species of wasps. They live everywhere except polar and subpolar regions.

Mosquitoes lay their eggs in still water. You can discourage mosquitoes by emptying containers that have collected water.

Chat with the author and like us on Facebook — www.facebook.com/worldofwonder2014

LEARN ABOUT **TECTONIC PLATES** IN THE NEXT INSTALLMENT OF WORLD OF WONDER

© 2020 Triefeldt Studios, Inc. Distributed by Andrews McMeel Syndication

CASA GRANDE
Dispatch
Pinal County's Daily Newspaper
Newspapers in Education

SHOP LOCAL
WE HAVE ROOTS HERE

Founded in 1982 by Phil and Julie Bond along with their daughter, Susan Bond Hillary (by marriage). Phil Bond, Horticulturist at CAC - Central Arizona College, is a dedicated member of the FFA South district, originally growers and providers of farm fresh tomatoes to the Safeway grocery store from 1985-1995. Through the years it has turned into a nursery provider and grower of Sonoran desert plants. Come and visit us, take a stroll through our nursery and we know you'll enjoy your day here and come back again for more fresh air.