



**Get Down
to EARTH
Savings**

**CASA GRANDE
JEWELRY & PAWN**
BUY ★ SELL ★ TRADE
(520) 836-7774

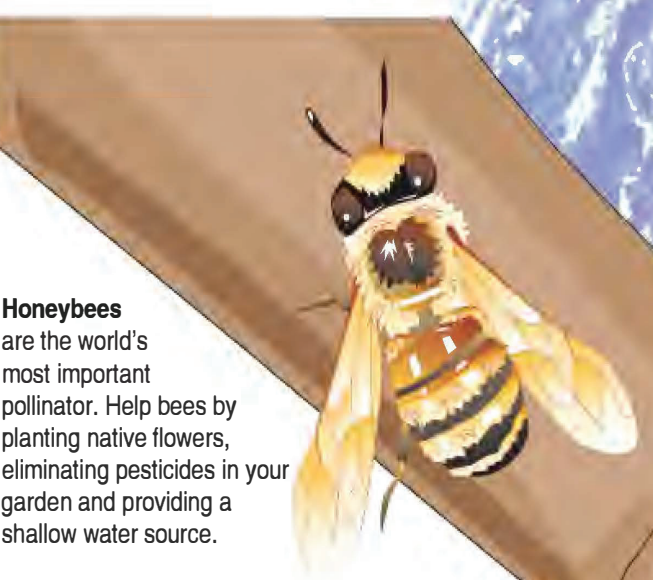


WORLD OF WONDER
Exploring the realms of history, science, nature and technology



EARTH DAY

TAKING MATTERS INTO YOUR OWN HANDS



Honeybees are the world's most important pollinator. Help bees by planting native flowers, eliminating pesticides in your garden and providing a shallow water source.



Loss of sea ice from climate change is the biggest threat to the survival of polar bears. Polar bears live and hunt on the ice. Actions you can take include reducing carbon footprints, supporting renewable energy, and donating to conservation organizations.

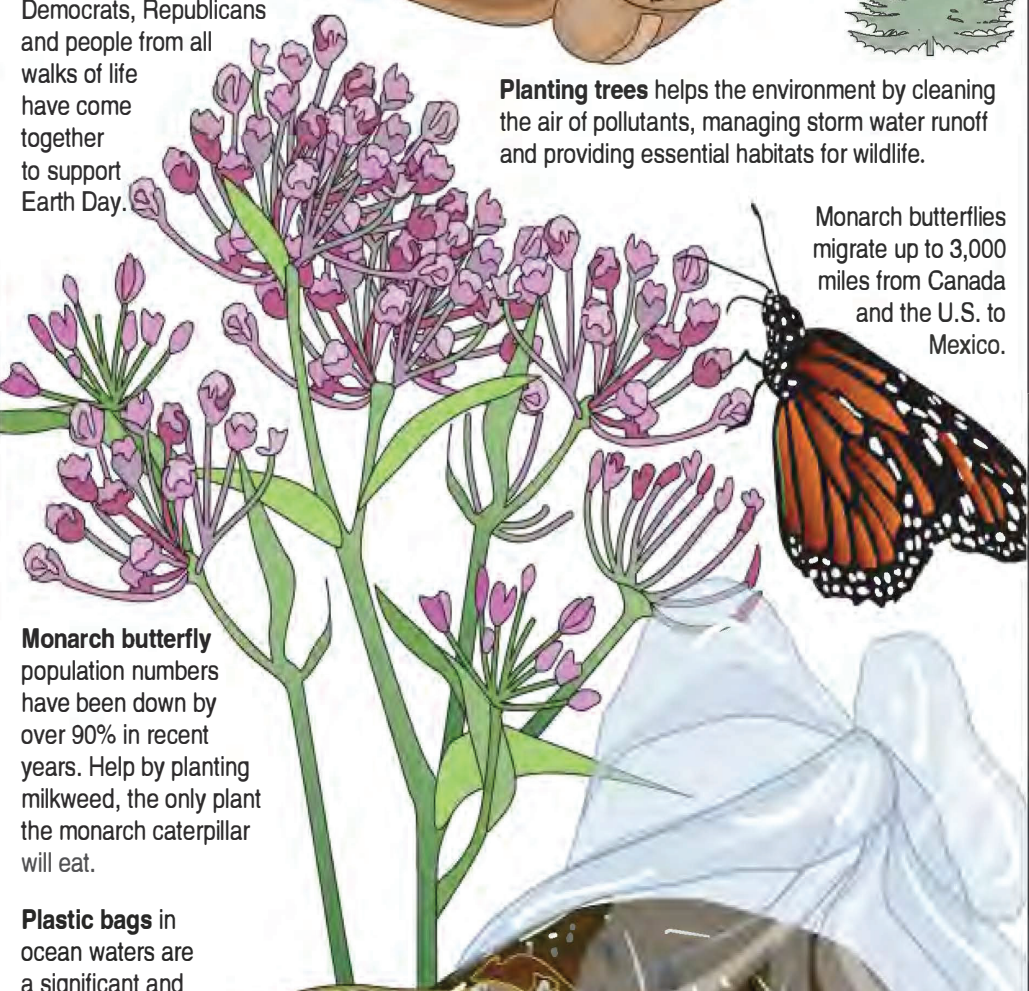
“Our Power, Our Planet.”
The theme of this year's Earth Day highlights how people's daily actions – in schools, cities and communities – can drive real change for a sustainable, healthy environment.

Grass roots
On April 22, 1970, the first Earth Day took place. Twenty million Americans participated in activities, events and demonstrations to help bring environmental concerns to the attention of the world. Their actions led to the creation of the U.S. Environmental Protection Agency (EPA) and the passage of the Clean Air, Clean Water and Endangered Species Acts.

Earth Day has evolved into a major educational and media event that reminds people how special the Earth and its living creatures are. Today, More than a billion people in 192 countries participate in Earth Day activities, making it the largest civic observance in the world.

Did you know?
Earth Day was founded by Gaylord Nelson, a Wisconsin senator who was concerned about the damaging effects of pollution on the earth. Activists created Earth Day in response to a large oil spill near Santa Barbara, California, in 1969. The EPA is responsible for maintaining and enforcing many U.S. environmental regulations.

Democrats, Republicans and people from all walks of life have come together to support Earth Day.



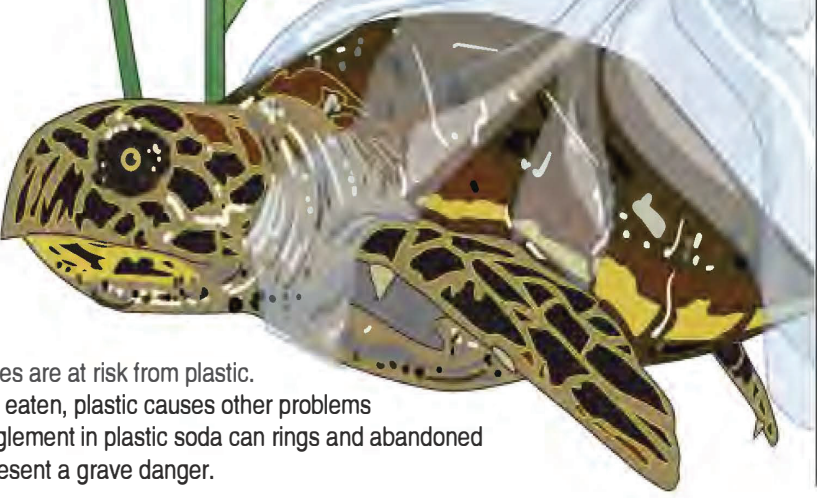
Monarch butterfly population numbers have been down by over 90% in recent years. Help by planting milkweed, the only plant the monarch caterpillar will eat.

Planting trees helps the environment by cleaning the air of pollutants, managing storm water runoff and providing essential habitats for wildlife.

Monarch butterflies migrate up to 3,000 miles from Canada and the U.S. to Mexico.

Plastic bags in ocean waters are a significant and growing global problem. You can help by reducing single-use plastic consumption and supporting cleanup initiatives.

All **sea turtle** species are at risk from plastic. In addition to being eaten, plastic causes other problems for turtles — entanglement in plastic soda can rings and abandoned fishing nets also present a grave danger.



- Make it happen!**
- This month marks the 56th anniversary of the first Earth Day. Earth Day is all about participation, and you may help in many ways, both small and large. Every action strengthens the movement. Here are some ways to save the planet:
 - Organize or join local events, cleanups or reforestation projects.
 - Engage in voter registration drives and town halls. Support clean air, clean water and clean energy initiatives.
 - Follow the 3 Rs every day: **Reduce** the amount of waste you produce. **Reuse** whatever you can, and **recycle** whatever you can't.
 - Provide a space on your property for wildlife. Feed birds and give them fresh water.
 - Don't buy products with excessive packaging.
 - Buy organic.
 - Use biodegradable products whenever possible.
 - Adopt a park and pick up trash when you visit it.
 - Start a compost pile.
 - Wear natural fibers instead of synthetics.
 - Ride a bike and reduce car use.
 - Don't use insecticides indiscriminately.
 - Plant a tree.
 - Buy used furniture. It is often better quality than new.
 - Join a wildlife, conservation or green organization and contribute what you can.
 - Support local family-run farms and farmer's markets.
 - Learn more and find resources at EarthDay.org.

SOURCES: World Book Encyclopedia, World Book Inc.; <https://en.wikipedia.org>; <https://www.britannica.com>; <https://www.earthday.org>; <https://www.cleanairactionfund.org>; <https://www.nwf.org>; <https://kickthecan.org>; <https://www.prevention.com>

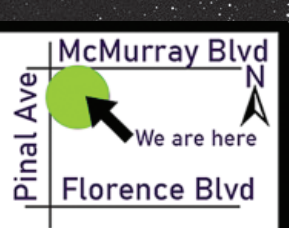
© 2026 Triefeldt Studios, Inc. Distributed by Andrews McMeel Syndication

LEARN ABOUT WILD WEST IN THE NEXT INSTALLMENT OF WORLD OF WONDER

CASA GRANDE
Dispatch
Serving Pinal County For More Than A Century

Newspapers
in **Education**

Need To Find Some Extra Cash?
BUY SELL TRADE



SCAN ME!

