



Together we have developed a strong sense of pride in our school, our mission to learn and our desire to explore. Our core values are the center of our culture. Our culture is designed around a set of core values that focus on teamwork and high achievement. We encourage our scholars to challenge themselves, develop their talents, make an impact on the local community and seek ways to positively effect change throughout the world. We focus on all elements which affect our scholars and their life achievements, putting emphasis on physical fitness and nutrition as well as their academic endeavors. We infuse technology into all aspects of our program, as well as including multiple language acquisitions, arts, music and hands on learning techniques. We will continue to soar, growing our program tailored to the needs of our Casa Grande scholars. We strive for excellence and we are excited to continue our academic journey with you and our scholars.

Sincerely,  
Patty Messer, Executive Director

# GRANDE INNOVATION ACADEMY



Phone: (520) 381-2360

Location: 950 N. Peart Rd.,  
Casa Grande, AZ 85122  
(Off of Peart Road;  
located behind Home Depot)

## WORLD OF WONDER

Exploring the realms of history, science, nature and technology

By Laurie Triefeldt

**Did you know?** Many owls have ear tufts on the top of their heads. These feathers are not part of the ears, but are used to communicate.

**Great horned owl** populations rise and fall along with that of its favorite prey, the snowshoe hare. (This tends to be a 10-year cycle.)

**Length:** 18-27 inches (46-68 cm)  
**Wingspan:** 49 inches (1.24 m)  
**Weight:** 3.1 pounds (1.4 kg)

These mostly nocturnal birds of prey come in many sizes and colors. Owls are known for their silent flight and haunting calls. There are more than 200 species of owls found in a variety of habitats around the world.

**Snowy owls** live in the frozen tundra of North America, feeding on lemmings and hares. Unlike most other owl species, these large owls hunt in daylight.

Snowy owls feed on hares and small rodents, especially lemmings. Adults eat three to five lemmings each day (about 1,600 per year). Female snowy owls lay three to five eggs when food is scarce and up to 11 eggs when food is plentiful.

Scientists have recorded a snowy owl in the wild that lived to be 9 years and 5 months old. A captive snowy owl once lived for 28 years.

Many owls have special flight feathers adapted for silent flight.

A snowy owl's feet are covered with feathers. It is one of the largest North American owl species. As with most owl species, male snowy owls are smaller than females.

**Length:** 20-27 inches (51-69 cm)  
**Wingspan:** Up to 5.5 feet (1.7 m)  
**Weight:** Up to 6.6 pounds (3 kg)

A group of owls is called a parliament, wisdom or study.

**The great gray owl** is also known as the great gray ghost, phantom of the North, cinereous owl, spectral owl, Lapland owl, spruce owl, bearded owl and sooty owl. This owl is the official bird of Manitoba, Canada. It tends to fly close to the ground, and it can be aggressive if it thinks its nest is in danger.

### Barn owls

There are 16 species of barn owls. These owls are easily recognized by their heart-shaped faces. This distinct facial shape helps the owl collect and amplify sound, giving it a keen sense of hearing, which it uses to locate prey. These medium-sized birds have a wingspan of about 3.5 feet (1 m).

Like all owls, barn owls feed on a variety of small animals, including mice, moles, rabbits and squirrels.

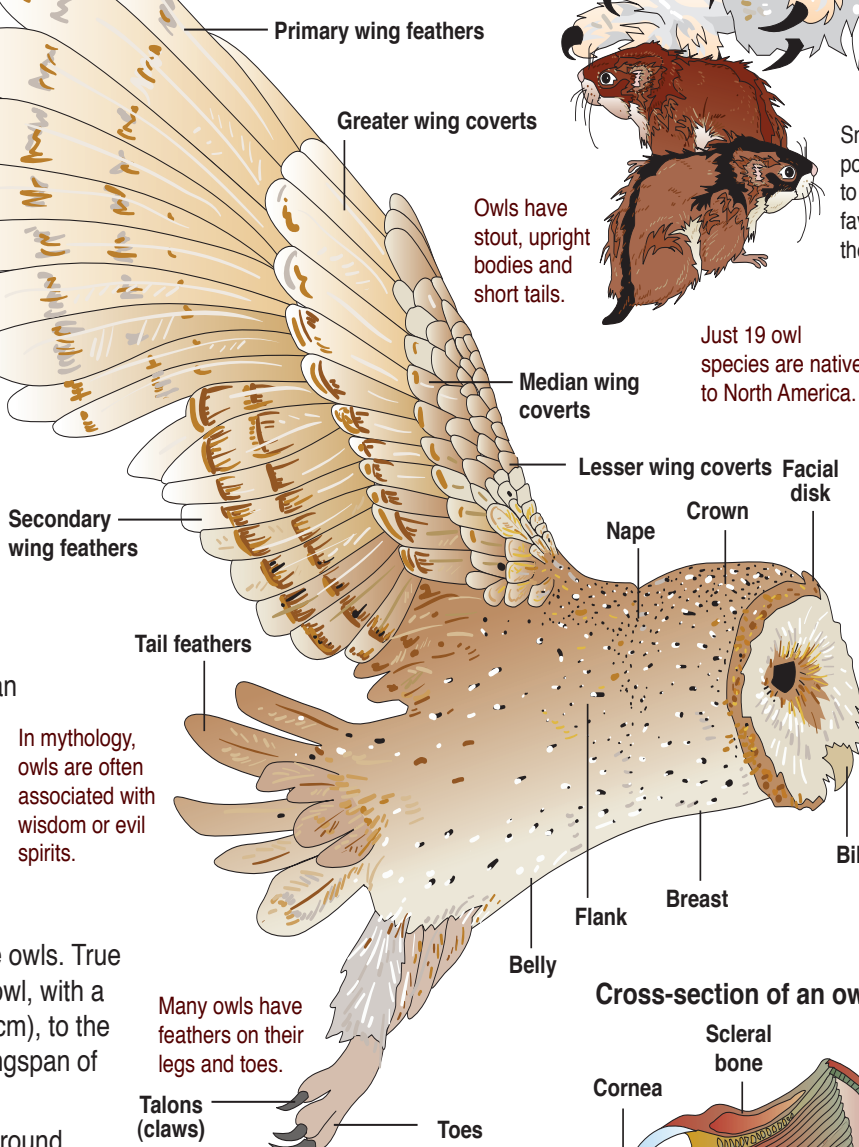
### True owls

There are about 190 species of true owls. True owls range in size from the tiny elf owl, with a wingspan of about 10.5 inches (27 cm), to the large Eurasian eagle owl, with a wingspan of about 6 feet (1.8 m).

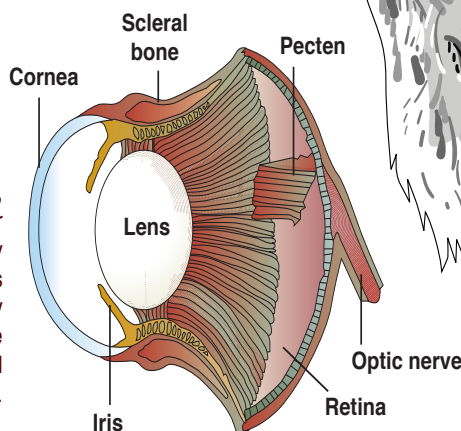
True owls have a large head with a round facial disc. Their feathers are usually a mottled brown or gray, which serves as a form of camouflage.

### Raising baby

All owls lay pure white, round eggs. They do not build nests, but will use ready-made sites like the abandoned nests of other birds or the holes in trees made by woodpeckers. Owlets sometimes leave the nest before they can fly. They stay in touch with their parents with peeps and calls. If you find a baby owl on the ground, resist the temptation to touch it, and let nature take its course. Owlets are quite good at looking after themselves.



#### Cross-section of an owl eye

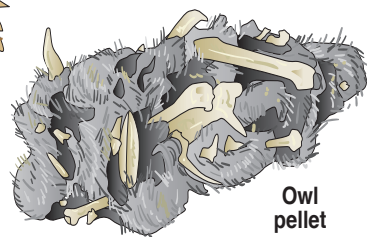


**Did you know?** An owl has three eyelids: one for blinking, one for sleeping and one for keeping the eye clean and healthy.

Owls have forward facing eyes, giving them binocular vision similar to humans — this means that they can see an object with both eyes at the same time. Owls have very limited eye movement within the eye socket. The owl must turn its head to see in different directions.

Owls can swallow small prey whole. Ten to 16 hours after eating, owls throw up hard pellets (or castings) of bones, fur, teeth, feathers and other undigestible material.

**Length:** 24-33 inches (61-84 cm)  
**Wingspan:** 60 inches (1.52 m)  
**Weight:** 2.6 pounds (1.2 kg)



Owl pellet

SOURCES: World Book Encyclopedia, World Book Inc.; <http://birding.about.com>; <http://www.owlpages.com>; <http://aviary.owls.com>; <http://www.thecanadianencyclopedia.ca>; <https://www.allaboutbirds.org>

Chat with the author and like us on Facebook — [www.facebook.com/worldofwonder2014](http://www.facebook.com/worldofwonder2014)

© 2016 Triefeldt Studios, Inc.  
Distributed by Andrews McMeel Syndication

LEARN ABOUT VOLCANOS IN THE NEXT INSTALLMENT OF WORLD OF WONDER

CASA GRANDE  
**Dispatch**  
Pinal County's Daily Newspaper  
Newspapers in Education



Supporting A Big Part Of Education

**Casa Grande Jewelry & Pawn**  
**520-836-7774**  
1326 N. Pinal Ave. & McMurray Blvd.  
Mon.-Fri. 9-6 Sat. 9-5  
**BUY • SELL • TRADE**