

# KEEPING STUDENTS WELL INFORMED AT HOME WHILE THEY'RE DISTANCE LEARNING.

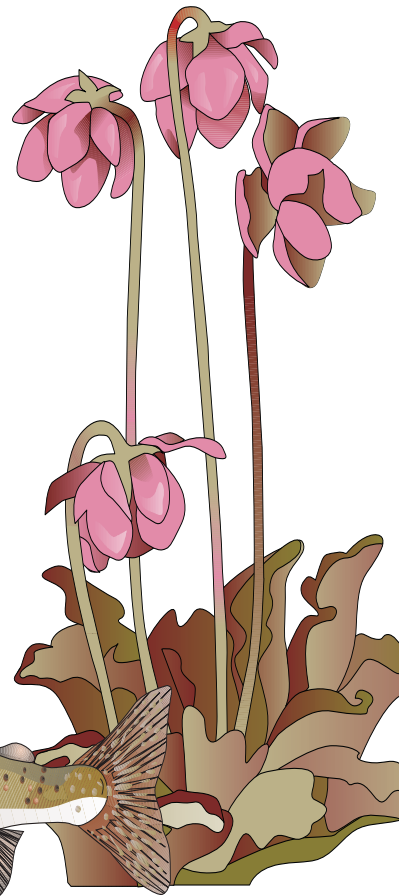


## WORLD OF WONDER

Exploring the realms of history, science, nature and technology

# NEWFOUNDLAND AND LABRADOR

The Strait of Belle Isle separates this Canadian province into two geographical areas: Labrador, which is a large area of mainland Canada, and Newfoundland, an island in the Atlantic Ocean. This easternmost province is famous for its long history, natural beauty and friendly residents.



The purple pitcher plant is Newfoundland and Labrador's provincial flower. It is called the pitcher plant because part of it can fill with water like a pitcher. Insects get trapped in the water, and the plant eats them.

### Just the facts

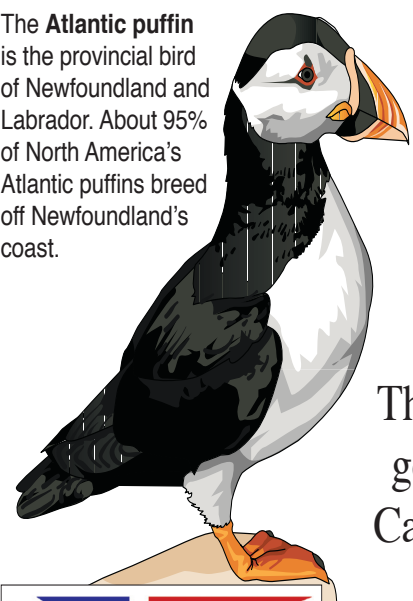
<b>Area</b>	156,453 sq. mi. (405,212 sq. km)
<b>Population</b>	522,103
<b>Capital city</b>	St. John's
<b>Highest elevation</b>	Mount Caubvick 5,420 ft. (1,652 m)
<b>Main industries</b>	Energy, fisheries, mining, forestry, tourism

### Did you know?

- Moose** were introduced to Newfoundland in 1878.
- For centuries, Newfoundland was the largest supplier of **salt cod** in the world.
- Newfoundland is the world's 16th-largest island.
- Much of what we know about Vikings visiting the region is found in the Icelandic sagas.
- The waters off the coast of this province are known as "Iceberg Alley" because every spring and summer, huge chunks of ice break away from glaciers in Greenland and drift past.
- Though Labrador's area is more than twice that of Newfoundland, it has only 6% of the province's population.
- In 1620, the **Mayflower** stopped in Newfoundland before heading south to found the Plymouth Colony.
- In 1949, Newfoundland became the 10th province of Canada.
- There are no snakes, skunks, deer, porcupines or groundhogs on the island of Newfoundland. Chipmunks and squirrels were introduced in the 1960s.
- Newfoundland has its own time zone (Newfoundland Standard Time), one half-hour ahead of Atlantic Standard Time.

SOURCES: World Book Encyclopedia, World Book Inc.; <https://www.newfoundlandlabrador.com/>; [www.worldatlas.com](http://www.worldatlas.com); Statistics Canada; [www.heritage.nf.ca](http://www.heritage.nf.ca); [visitnewfoundland.ca](http://visitnewfoundland.ca).

The Atlantic puffin is the provincial bird of Newfoundland and Labrador. About 95% of North America's Atlantic puffins breed off Newfoundland's coast.



Flag of Newfoundland and Labrador

### In a word

Explorer **John Cabot** called Newfoundland "St. John's Isle" in honor of the saint. It was later changed to "New found launde," which is from the Latin "terra nova," or "new land." Labrador is thought to be named for João Fernandes Lavrador, a Portuguese navigator who explored the area in the 1400s.

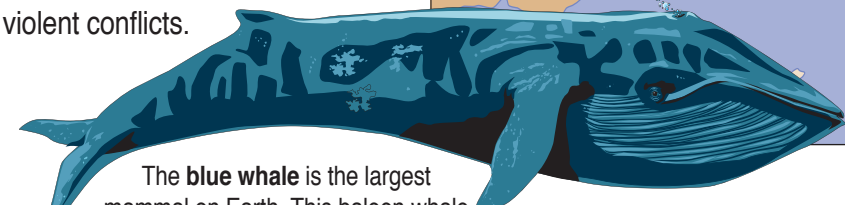
People from Newfoundland are called **Newfoundlanders**, while people from Labrador are called **Labradorians**.

The motto of Newfoundland and Labrador is "Seek ye first the Kingdom of God."

### Looking back

People were living in the region as early as 9000 B.C. Vikings arrived in A.D. 1000, but the native inhabitants were hostile and forced the Vikings to give up settling in the area.

The **Beothuk** people were living in Newfoundland when the next European settlers arrived. The Beothuk became extinct by 1829 due to disease, malnutrition and violent conflicts.



The **blue whale** is the largest mammal on Earth. This baleen whale is commonly seen on the southwest coast of Newfoundland, especially in winter.

Tens of thousands of whales of varying species pass through these waters every year.



The **Newfoundland dog** is a gentle giant, well known for its patient, sweet and devoted disposition. It can weigh up to 150 lbs.



The provincial game bird is the **rock ptarmigan**.



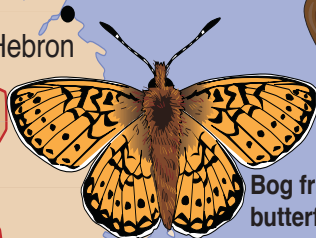
Jiggs dinner

### Just visiting

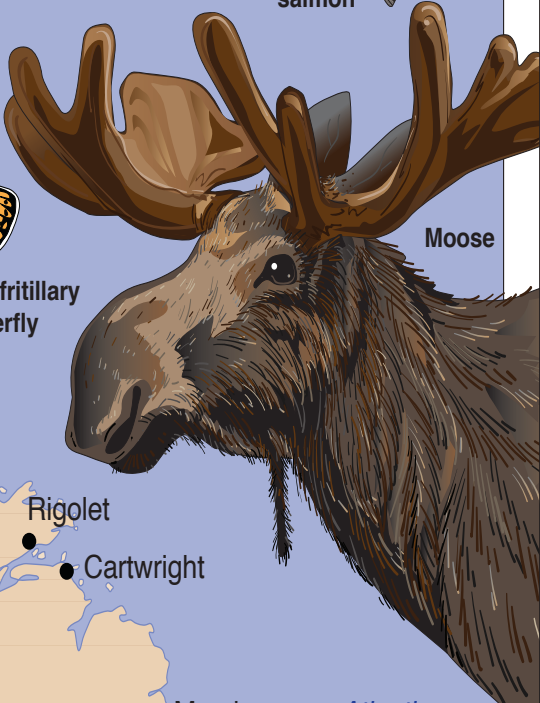
Summer is the best time to visit this province. From June through September, many festivals, fairs, concerts, plays and craft shows take place. Recreational activities include fishing and wilderness hikes, golf, scuba diving, sea kayaking and whale watching.

The locals are very friendly to visitors and enjoy sharing travel tips. Quaint bed-and-breakfasts abound on both the island and the mainland, and ferries travel frequently between the two.

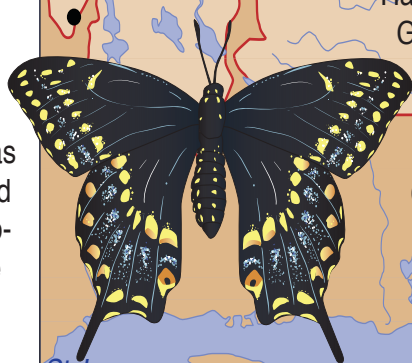
Newfoundland has a rich culinary history, making it a wonderful place to eat. Many recipes have been passed down from generation to generation. You can expect to eat some excellent seafood, such as stuffed squid, cod ceviche or fish chowder. **Jiggs dinner**, a Sunday tradition, is a Newfoundland version of corned beef and cabbage.



Bog fritillary butterfly



Moose



Black swallowtail butterfly

© 2020 Trifield Studios, Inc. Distributed by Andrews McMeel Syndication

LEARN ABOUT OWLS IN THE NEXT INSTALLMENT OF WORLD OF WONDER

CASA GRANDE  
**Dispatch**  
Pinal County's Daily Newspaper



OUR WEEKLY NEWSPAPERS IN EDUCATION PAGE CAN BE A FUN LEARNING TOOL FOR YOUR KIDS. CHECK BACK EACH THURSDAY FOR A NEW, EXCITING TOPIC!

CASA GRANDE  
**Dispatch**

TO SUBSCRIBE:  
**(520) 423-8685**

