

Appendix 2: North System Photograph Log

Photograph 1: The hatch door at Reservoir 51770 was not adequate. The hatch door did not have a shoebox lid design, was constructed of wood, and did not form a sanitary seal with the door frame.



Photograph 2: Rust holes were observed at Reservoir 51770.



Photograph 3: The panel walls for Reservoir 51770 were loose and missing many bolts.



Photograph 4: Reservoir 51771's vent mesh is too wide, as evidenced by a spider and webs living within the vent.



Photograph 5: For Reservoir 51771, some of the divot plugs between the corrugated roof and the vent need repairs.



Photograph 6: There was evidence of condensation in Reservoir 51771 leaking along the outside of the concrete walls.



Photograph 7: Reservoir 51771's overflow valve was too close to the ground and surrounded with brush. In addition, the overflow was constantly leaking water.



Photograph 8: Reservoir 51772's hatch was flush with the roof.



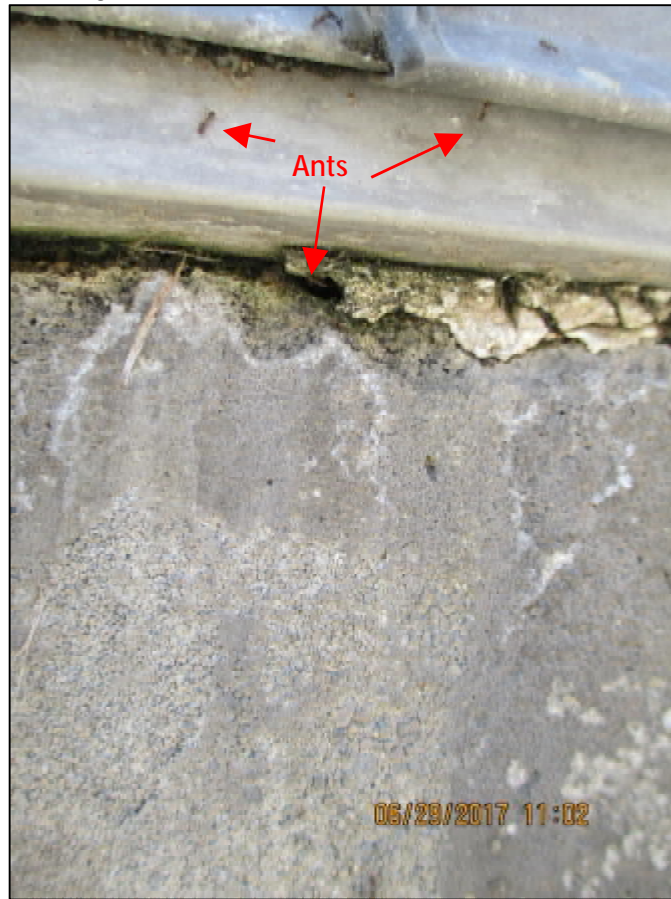
Photograph 9: Reservoir 51772's vent did not have a 24-mesh screen and protection from rain and airborne contaminants.



Photograph 10: A crack in the roof of Reservoir 51772.



Photograph 11: Ants crawling into cracks in Reservoir 51772.



Photograph 12: A gap in between the roof and the wall at Reservoir 51772.



Photograph 13: Repairs are needed at Reservoir 62310.



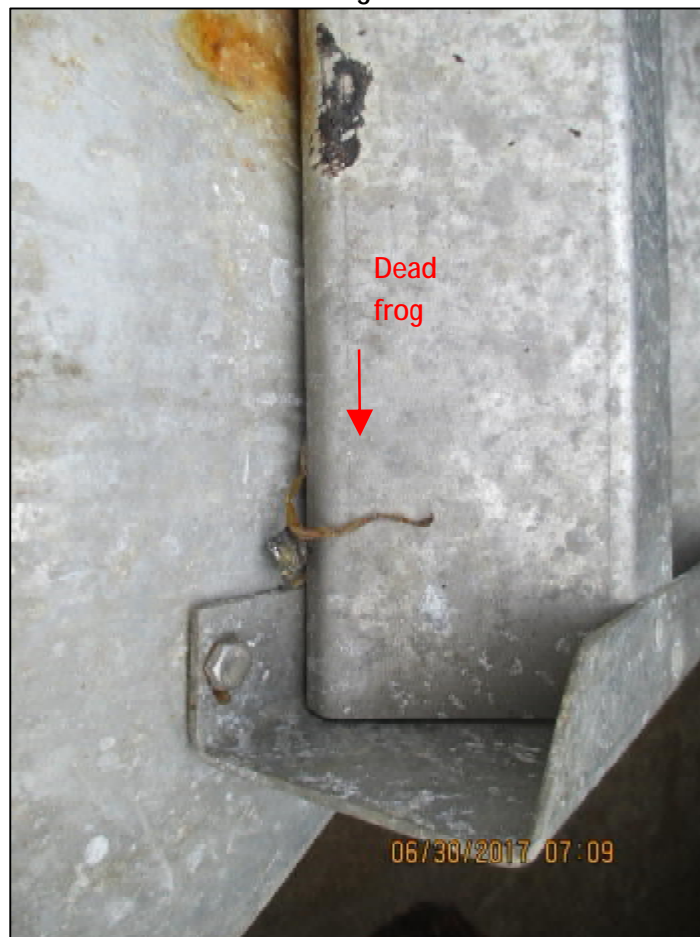
Photograph 14: The upward facing vent had a seal along the base that would prevent rain water from exiting the vent. This may lead to rain accumulation that would enter Reservoir 62310.



Photograph 15: Reservoir 62310 had moss growing in the seams between the roof panels.



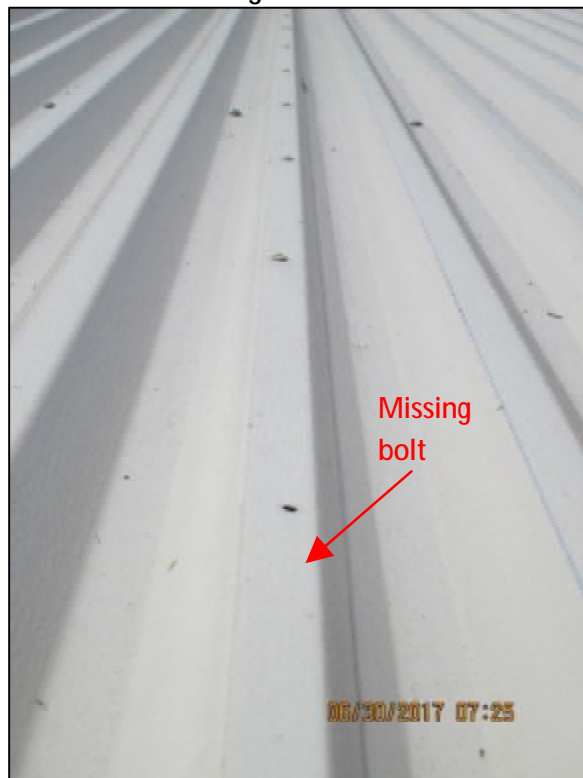
Photograph 16: Reservoir 63210 had a dead frog inside the reservoir.



Photograph 17: the paneling at Reservoir 63210 was coming off and needs repairs. Gaps are created by loose siding and holes from loose bolts.



Photograph 18: Reservoir 63210 was missing bolts in the roof.



Photograph 19: A hill near Reservoir 63210 was eroding and depositing loads of dirt immediately adjacent to the reservoir.



Photograph 20: The sealant between the roof of Reservoir 63210 and the wall had some minor cracks forming.



Photograph 21: A dead rodent was found in the finished water of Reservoir 52698.



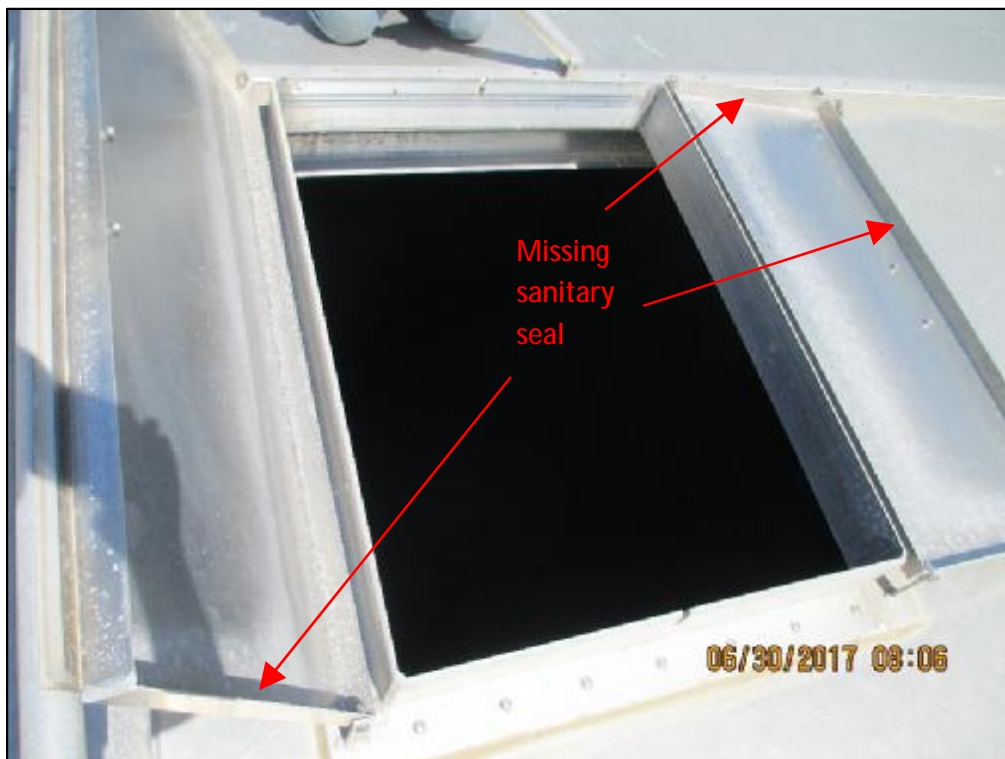
Photograph 22: The concrete roof and the metal roof need a seal at Reservoir 52698.



Photograph 23: One of the vents for Reservoir 52698 was missing a plug on the vent roof.



Photograph 24: Reservoir 52698's hatch doors need a sanitary seal along the entirety of the door.



Photograph 25: A crack along the wall of Reservoir 53116



Photograph 26: Reservoir 53116's wall had bolts missing, creating holes in the reservoir.

