

**COLOR & FINISH LEGEND:**

	EX 1	EPS COLOR 1, COLOR: SW 682 (CARNIVAL)
	EX 2	EPS COLOR 2, COLOR: SW 921 (ON THE ROCKS)
	EX 3	EPS COLOR 3, COLOR: SW 734 (COTTON WHITE)
	EX 4	EPS COLOR 4 (ELECTRIC LINE) COLOR: SW 653
	EX 5	EPS COLOR 5, COLOR: SW 707 (HICKORY SMOKE)
	EX 6	FAIR STONE, COLOR: T46 (LEDGESTONE)
	EX 7	HARDIE PLANK, COLOR: TRIMMER BARK (STATEMENT COLLECTION)
	EX 8	STOREFRONT SYSTEM, COLOR: CLEAR #17 (RAWNEER)
	EX 9	GLASS, COLOR: CLEAR GLASS
	EX 10	METAL ROOF, COLOR: MEDIUM BRONZE

NOTE: ALL EPS 3 THICKNESS @ 1 1/2" UNLESS NOTED OTHERWISE



Inn Code- xxxx  
Project #: 20-511ND

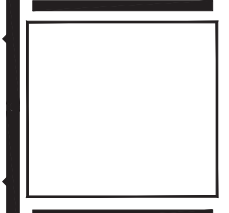
PROJECT ARCHITECT  
Benjamin Cortez  
DALLAS, TEXAS

PROJECT MANAGER  
RK PATEL Design & Planning LLC



Owner  
S3 HOTELS LLC,  
ARIZONA

110 West Aero Drive  
Payson, Arizona 85541



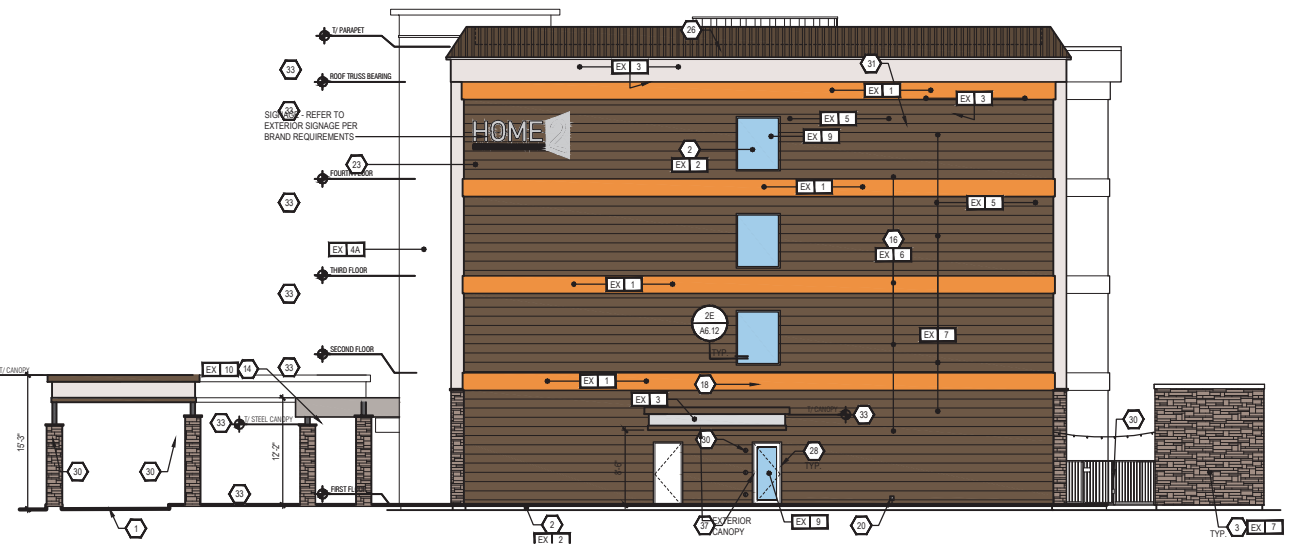
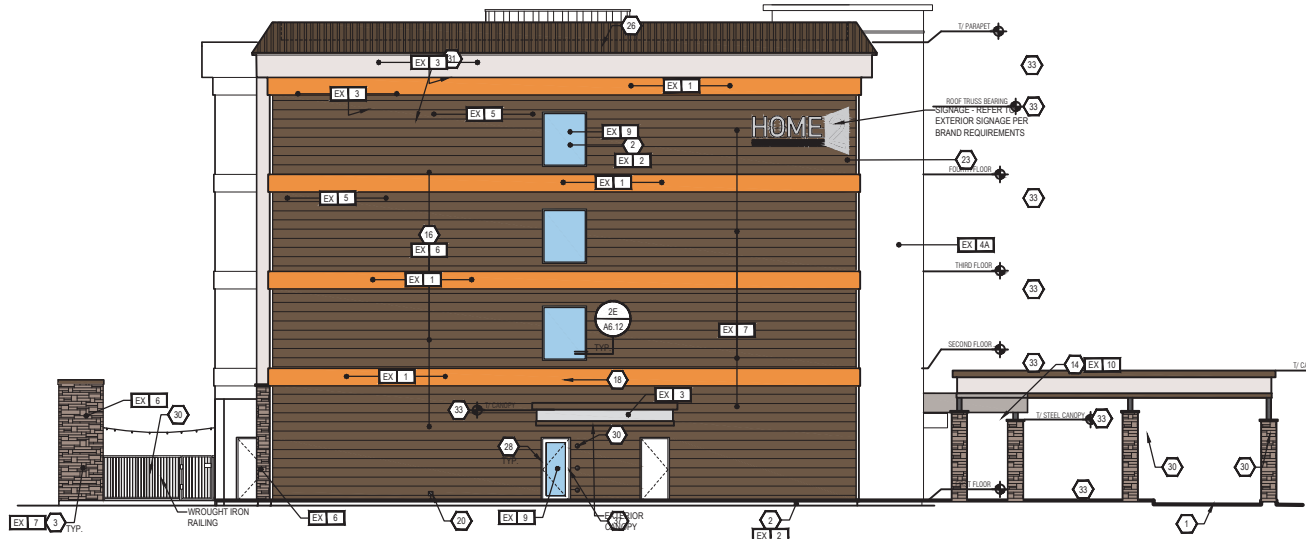
Revisions:


Drawn By: \_\_\_\_\_  
Checked By: \_\_\_\_\_  
Issue Date: \_\_\_\_\_  
Project No: \_\_\_\_\_

SHEET INFORMATION  
EXTERIOR ELEVATIONS

Sheet No:  
**A5.01**

**4 EXTERIOR ELEVATION - REAR VIEW**  
A5.01 SCALE: NOT TO SCALE



**3 EXTERIOR ELEVATION - SIDE**  
A5.01 SCALE: NOT TO SCALE

**2 EXTERIOR ELEVATION - SIDE**  
A5.01 SCALE: NOT TO SCALE



**1 EXTERIOR ELEVATION - MAIN ENTRANCE**  
A5.01 SCALE: NOT TO SCALE