

# OPEN HOUSE TODAY

Noon-4pm • 2005 Timberwood Lane • Chesterton

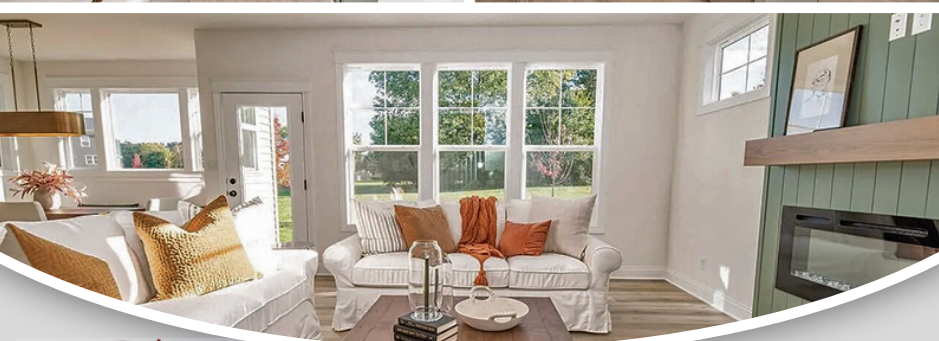
The Henry is located in the wooded and rolling setting of Easton Park. Offered at **\$639,900**

This gorgeous new construction home is all you could ever want. Stunning kitchen with GORGEOUS pantry, great room features the most charming fireplace and the primary is like no other! It features an amazing en-suite bathroom, huge closet that connects to the laundry room. A full unfinished basement offers so much potential.

**2481 sq ft | 4 Beds / 3 Baths | 3 Car**

- Built-In Features
- Storage
- Kitchen Island
- Stone Counters
- Open Floorplan

**DIRECTIONS:** Take I-94 east to IN-49 South. Continue on IN-49 S to E Porter Ave to Timberwood Lane



# STEINER HOMES

219.916.3744  
steinerhomesltd.com