

Passport to The Preserve of Saint John

Tour 16 beautifully designed homes
nestled in The Preserve of Saint John on
SATURDAY, FEBRUARY 21
& SUNDAY, FEBRUARY 22
NOON TO 3 PM

Experience this quaint community
surrounded by lush trees, peaceful ponds,
scenic bike and walking paths, and
breathtaking views at every turn.



13333 CAMAS • ST JOHN

Offered at \$898,900
4705 sq ft • 3 Bed • 3 Bath • 3 Car
White oak floors. 14ft vaulted ceiling.
Fully finished basement. Extended
covered porch.



Traci Van Gundy
219.765.4457



13410 CAMAS • ST JOHN

Offered at \$1,185,000
4190 sq ft • 5 Bed • 5 Bath • 3 Car
Full related living suite. No rear neighbors.
Walkout basement (unfinished). Chefs
kitchen. Premium finishes throughout.



Renee Egnatz
219.808.7337



9673 CORYDALIS AVE • ST JOHN

Offered at \$944,000
3490 sq ft • 4 Bed • 4 Bath • 3.5 Car
500 sq ft Bonus Room. Thoughtfully
designed. Main level primary suite. Large
finished bonus room. Striking architectural
wall detail. Covered rear patio.



CONNECTIONS

Sandy Dabrowski
219.746.9556



9720 DUNEGRASS WAY • ST JOHN

Offered at TBD
3691 sq ft • 4 Bed • 3 Bath • 3 Car
Stunning two-story new construction.
Blend of luxury & function. Thoughtfully
curated custom details throughout.



CONNECTIONS

Jennifer Stiglitz
219.677.9190



9770 DUNEGRASS WAY • ST JOHN

Offered at \$955,000
4055 sq ft • 5 Bed • 5 Bath • 3 Car
Upper-level laundry. High-end kitchen
appliances. Coffee bar w/sink &
beverage fridge.



CONNECTIONS

Gerard Huguelet
815.861.4401



12984 SPIREA DR • ST JOHN

Offered at \$859,900
2655 sq ft • 3 Bed • 3 Bath • 3 Car
Open Concept. Culinary chefs'
kitchen. Hardwood floors. English
lookout basement.



CONNECTIONS

Gerard Huguelet
815.861.4401



9864 SWITCH GRASS LN • ST JOHN

Offered at \$814,900
2435 sq ft • 3 Bed • 3 Bath • 3 Car
Open concept. Large butler pantry.
Great room w/cozy fireplace. Main
floor owner's suite.



CONNECTIONS

Tom Cummings
708.717.4057



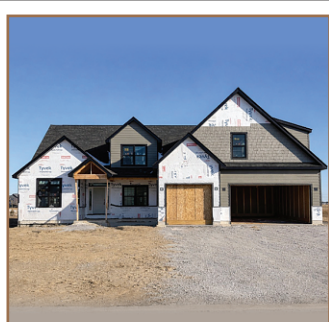
9935 SWITCH GRASS LN • ST JOHN

Offered at \$954,000
3550 sq ft • 4 Bed • 4 Bath • 3 Car
Gourmet kitchen w/oversized island.
11ft soaring ceiling. Hardwood floors.
Spa-like ensuite.



CONNECTIONS

Sandy Dabrowski
219.746.9556



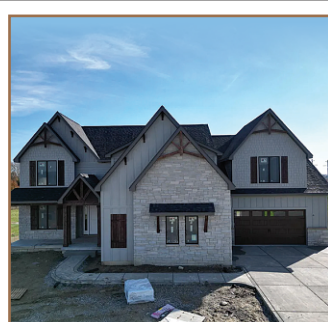
9945 SWITCH GRASS LN • ST JOHN

Offered at \$929,900
3600 sq ft • 5 Bed • 4 Bath • 3 Car
Primary suite on both levels. Main
level primary w/fireplace & spa-like
ensuite. Soaring ceilings.



CONNECTIONS

Jessica Ivin
219.688.4524

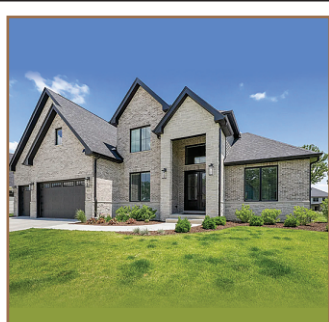


10045 SWITCH GRASS LN • ST JOHN

Offered at \$1,100,000
4023 sq ft • 5 Bed • 4 Bath • 5 Car
Gourmet kitchen. Granite countertops
and expansive island. Versatile flex
space.



Steve Bardoczi
219.577.3491

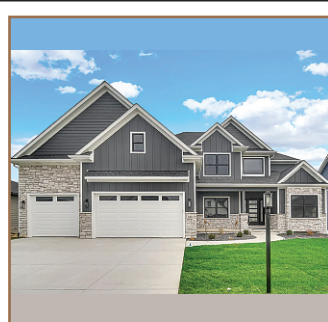


9533 TALL GRASS TRL • ST JOHN

Offered at \$1,150,000
6929 sq ft • 5 Bed • 5 Bath • 3 Car
Designer kitchen w/8' island. High-end
appliances. Butler pantry. Finished
basement.



Kathy D Whaley
219.869.9292



9467 TALL GRASS TRL • ST JOHN

Offered at \$989,900
3681 sq ft • 4 Bed • 4 Bath • 3 Car
Primary bedroom suite. Laundry
room on both levels. Walk-in closets in
all bedrooms.



Nicole Fech
219.241.5242

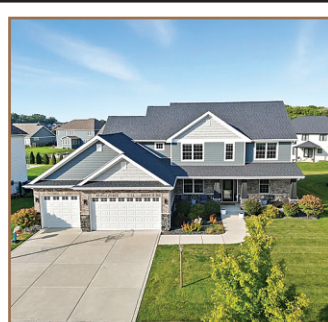


9547 TALL GRASS TRL • ST JOHN

Offered at \$844,900
2852 sq ft • 4 Bed • 3 Bath • 3 Car
Timeless architectural touches. Two-story
great room. Luxurious primary suite.
Covered porch.



Jessica Kish
219.614.7874



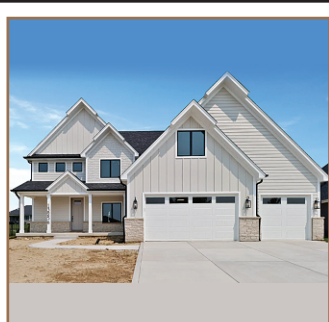
13028 WATERLEAF DR • ST JOHN

Offered at \$753,000
4664 sq ft • 4 Bed • 5 Bath • 3 Car
Open concept. Huge kitchen island.
Cosy living room w/fireplace. Four
seasons room.



CONNECTIONS

Sandy Dabrowski
219.746.9556



13256 WATERLEAF DR • ST JOHN

Offered at \$849,000
3370 sq ft • 4 Bed • 4 Bath • 3 Car
Luxury Living. Open concept filled
w/natural light. Gourmet kitchen.
Primary suite w/spa like bath.



Steve Bardoczi
219.577.3491



13053 BLUESTEM DR • ST JOHN

Offered at \$979,900
5987 sq ft • 5 Bed • 6 Bath • 3 Car
Chef's dream kitchen. Prep pantry.
Spa-like primary suite. Finished
basement w/sauna.



Gina Guarino
219.765.6698